

Data Path : Z:\HPCHEM1\BNA G\Data\BG033117\
 Data File : BG026528.D
 Acq On : 31 Mar 2017 22:29
 Operator : SJ/MA
 Sample : I2448-18
 Misc :
 ALS Vial : 11 Sample Multiplier: 1

Instrument :
 BNA_G
 ClientSampleId :
 G9YD3

Integration Parameters: LSCINT.P
 Integrator: RTE
 Smoothing : OFF
 Sampling : 1
 Start Thrs: 0.2
 Stop Thrs : 0

Filtering: 5
 Min Area: 1 % of largest Peak
 Max Peaks: 100
 Peak Location: TOP

If leading or trailing edge < 100 prefer < Baseline drop else tangent >
 Peak separation: 5

Method : Z:\HPCHEM1\BNA G\METHODS\SOM-EPA-BG032717MA.M
 Title : SVOA CALIBRATION

Signal : TIC

peak #	R.T. min	first scan	max scan	last scan	PK TY	peak height	corr. area	corr. % max.	% of total
1	7.201	692	700	714	rBV	133896	265111	4.29%	0.537%
2	7.360	720	727	739	rBV	599320	1012500	16.39%	2.052%
3	7.577	757	764	774	rBV	585298	1043188	16.89%	2.114%
4	8.042	833	843	857	rBV	561716	981147	15.88%	1.988%
5	8.741	955	962	973	rBV	469159	814764	13.19%	1.651%
6	9.199	1029	1040	1056	rBV	624291	1138180	18.43%	2.306%
7	9.622	1106	1112	1119	rVB2	48548	75336	1.22%	0.153%
8	9.922	1155	1163	1176	rBV	548420	962327	15.58%	1.950%
9	10.462	1246	1255	1275	rBV	793248	1575780	25.51%	3.193%
10	10.838	1308	1319	1333	rBV	804604	1462347	23.67%	2.963%
11	14.046	1859	1865	1879	rBV	1738961	2572072	41.64%	5.212%
12	14.340	1908	1915	1925	rBV	2093268	3301676	53.45%	6.691%
13	14.646	1960	1967	1979	rBV2	1210389	2002360	32.42%	4.058%
14	14.845	1996	2001	2025	rBV	74128	200615	3.25%	0.407%
15	15.633	2127	2135	2147	rBV	2828558	4393299	71.13%	8.903%
16	15.750	2149	2155	2172	rVV	746011	1195202	19.35%	2.422%
17	17.378	2425	2432	2442	rBV2	1659604	2497459	40.43%	5.061%
18	17.478	2442	2449	2464	rVV	3173950	4851392	78.54%	9.831%
19	19.757	2830	2837	2847	rBV	4146352	5967811	96.62%	12.093%
20	21.626	3148	3155	3167	rBV	1961168	3234911	52.37%	6.555%
21	24.593	3648	3660	3675	rBV2	2135964	6176813	100.00%	12.517%
22	24.804	3685	3696	3710	rVB3	1208104	3397468	55.00%	6.885%
23	25.909	3878	3884	3894	rVB4	37555	99220	1.61%	0.201%
24	27.243	4103	4111	4126	rVB4	37490	126869	2.05%	0.257%

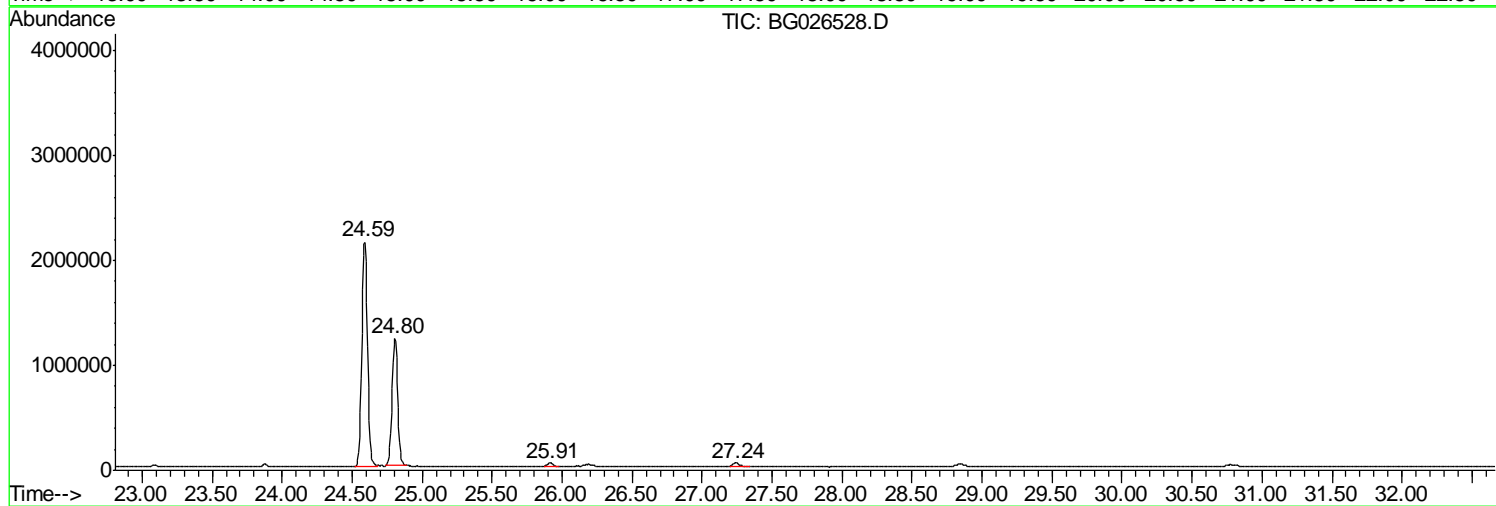
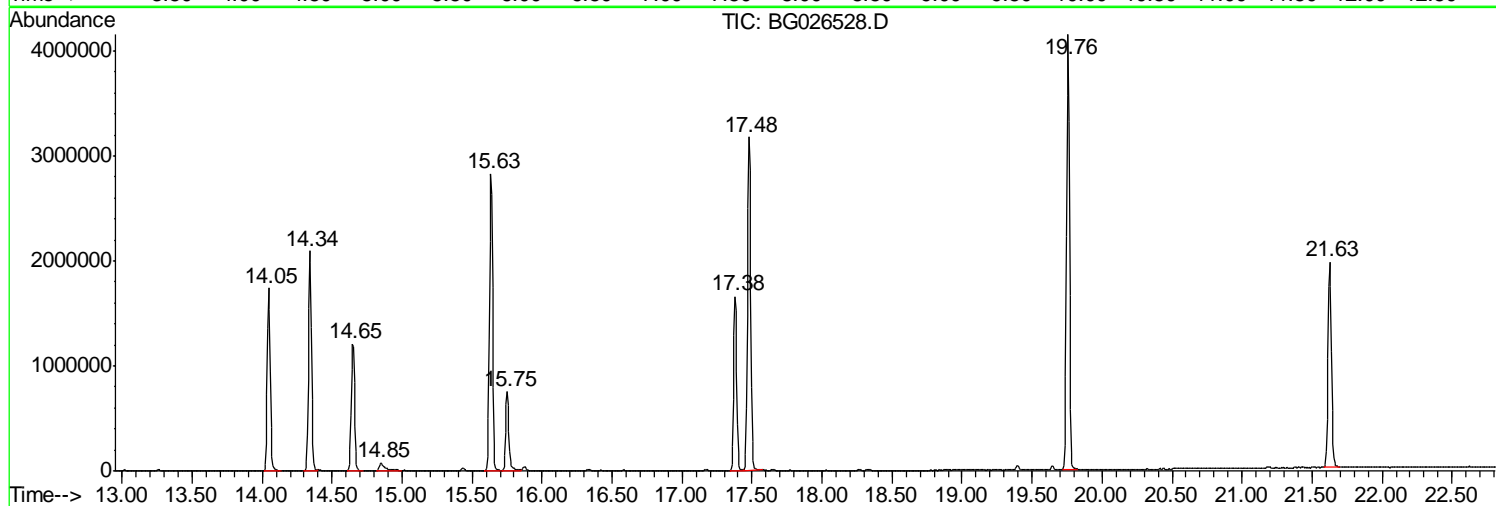
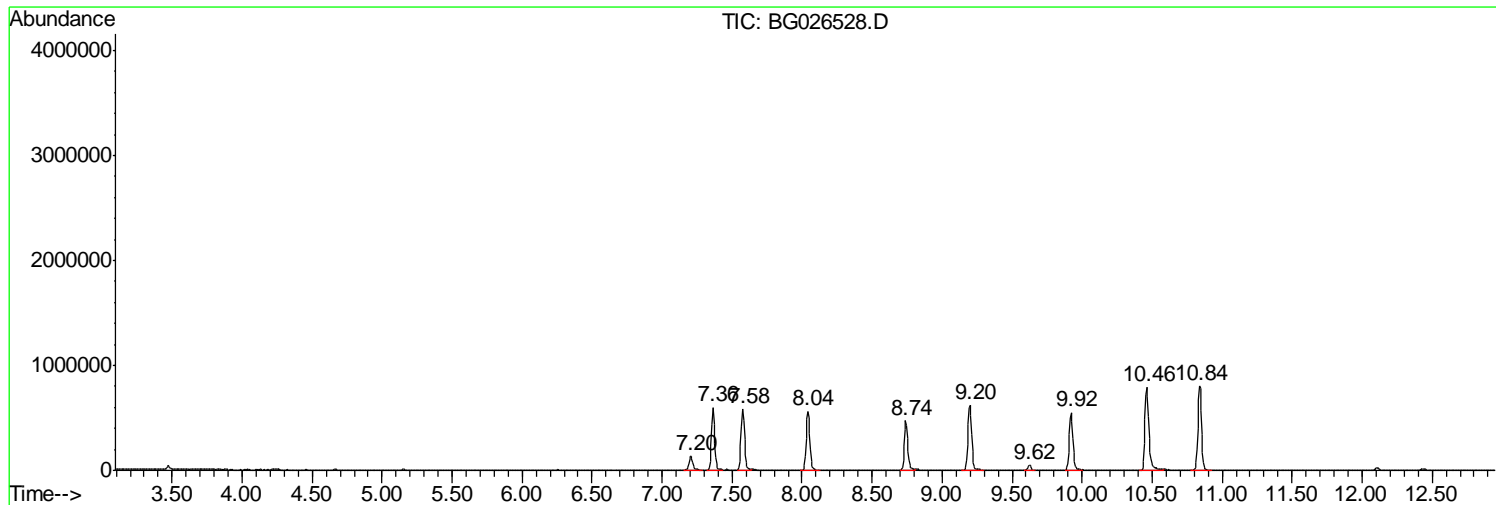
Sum of corrected areas: 49347847

Data Path : Z:\HPCHEM1\BNA G\Data\BG033117\
Data File : BG026528.D
Acq On : 31 Mar 2017 22:29
Operator : SJ/MA
Sample : I2448-18
Misc :
ALS Vial : 11 Sample Multiplier: 1

Instrument :
BNA_G
ClientSampled :
G9YD3

Quant Method : Z:\HPCHEM1\BNA G\METHODS\SOM-EPA-BG032717MA.M
Quant Title : SVOA CALIBRATION

TIC Library : C:\DATABASE\NIST02.L
TIC Integration Parameters: LSCINT.P



Data Path : Z:\HPCHEM1\BNA_G\Data\BG033117\
Data File : BG026528.D
Acq On : 31 Mar 2017 22:29
Operator : SJ/MA
Sample : I2448-18
Misc :
ALS Vial : 11 Sample Multiplier: 1

Instrument :
BNA_G
ClientSampleId :
G9YD3

Quant Method : Z:\HPCHEM1\BNA_G\METHODS\SOM-EPA-BG032717MA.M
Quant Title : SVOA CALIBRATION

TIC Library : C:\DATABASE\NIST02.L
TIC Integration Parameters: LSCINT.P

No Library Search Compounds Detected

Data Path : Z:\HPCHEM1\BNA_G\Data\BG033117\
Data File : BG026528.D
Acq On : 31 Mar 2017 22:29
Operator : SJ/MA
Sample : I2448-18
Misc :
ALS Vial : 11 Sample Multiplier: 1

Instrument :
BNA_G
ClientSampleId :
G9YD3

Quant Method : Z:\HPCHEM1\BNA_G\METHODS\SOM-EPA-BG032717MA.M
Quant Title : SVOA CALIBRATION

TIC Library : C:\DATABASE\NIST02.L
TIC Integration Parameters: LSCINT.P

TIC Top Hit name	RT	EstConc	Units	Response	--Internal Standard--			
					#	RT	Resp	Conc
