

Data Path : Z:\SVOASRV\HPCHEM1\BNA\_G\DATA\BG040119\  
 Data File : BG040280.D  
 Acq On : 2 Apr 2019 00:55  
 Operator : JU/SJ  
 Sample : K2179-15  
 Misc :  
 ALS Vial : 17 Sample Multiplier: 1

Instrument :  
 BNA\_G  
 ClientSampleId :  
 TP-8D

Quant Time: Apr 02 04:38:11 2019  
 Quant Method : Z:\SVOASRV\HPCHEM1\BNA\_G\METHODS\8270-BG032719.M  
 Quant Title : ASP BNA STANDARDS FOR 5 POINT CALIBRATION  
 QLast Update : Thu Mar 28 05:47:00 2019  
 Response via : Initial Calibration

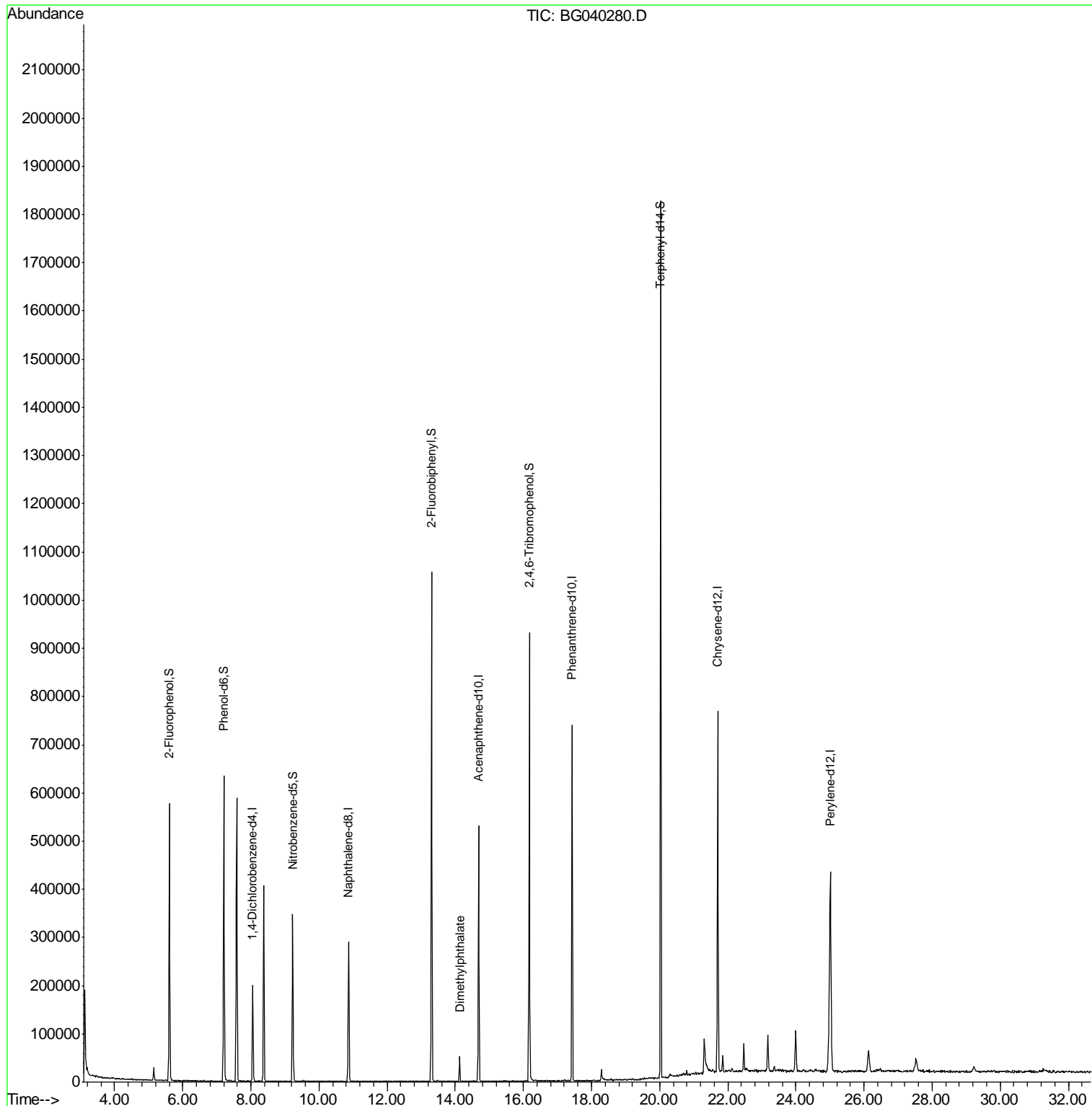
Internal Standards	R.T.	QIon	Response	Conc	Units	Dev(Min)
1) 1,4-Dichlorobenzene-d4	8.05	152	55003	20.00	ng	-0.02
21) Naphthalene-d8	10.87	136	250593	20.00	ng	-0.02
39) Acenaphthene-d10	14.69	164	181345	20.00	ng	-0.02
64) Phenanthrene-d10	17.43	188	465496	20.00	ng	-0.02
76) Chrysene-d12	21.71	240	442093	20.00	ng	-0.02
87) Perylene-d12	25.01	264	448897	20.00	ng	-0.02
System Monitoring Compounds						
5) 2-Fluorophenol	5.61	112	253158	76.51	ng	-0.01
7) Phenol-d6	7.21	99	375221	82.06	ng	-0.02
23) Nitrobenzene-d5	9.23	82	209863	44.51	ng	-0.02
42) 2,4,6-Tribromophenol	16.17	330	165230	84.31	ng	-0.02
45) 2-Fluorobiphenyl	13.30	172	555239	45.37	ng	-0.02
79) Terphenyl-d14	20.03	244	911945	46.41	ng	-0.02
Target Compounds						Qvalue
50) Dimethylphthalate	14.13	163	36662	2.583	ng	99

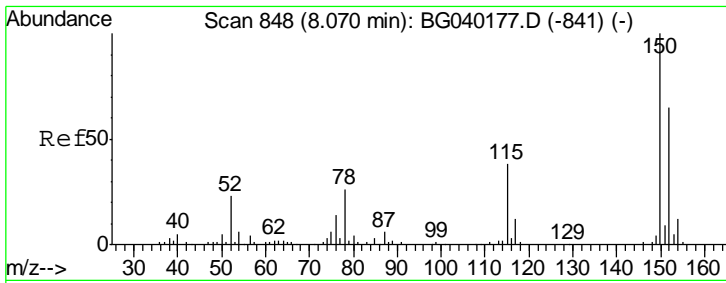
(#) = qualifier out of range (m) = manual integration (+) = signals summed

Data Path : Z:\SVOASRV\HPCHEM1\BNA\_G\DATA\BG040119\  
Data File : BG040280.D  
Acq On : 2 Apr 2019 00:55  
Operator : JU/SJ  
Sample : K2179-15  
Misc :  
ALS Vial : 17 Sample Multiplier: 1

Instrument :  
BNA\_G  
ClientSampleID :  
TP-8D

Quant Time: Apr 02 04:38:11 2019  
Quant Method : Z:\SVOASRV\HPCHEM1\BNA\_G\METHODS\8270-BG032719.M  
Quant Title : ASP BNA STANDARDS FOR 5 POINT CALIBRATION  
QLast Update : Thu Mar 28 05:47:00 2019  
Response via : Initial Calibration

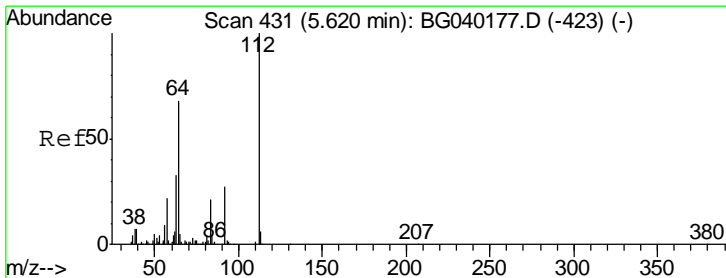
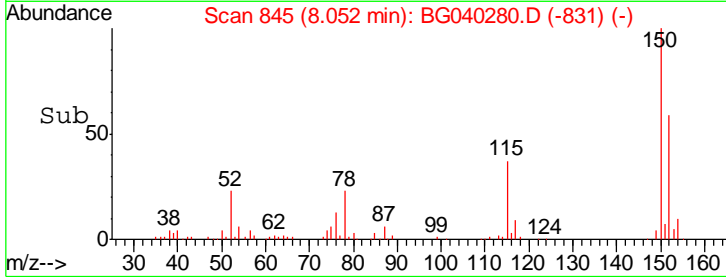
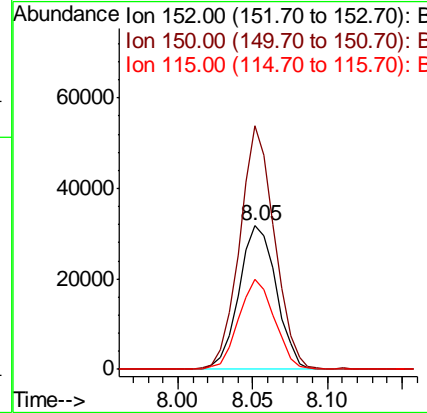
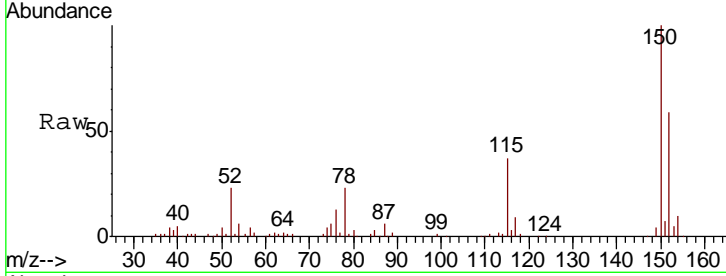




#1  
 1,4-Dichlorobenzene-d4  
 Concen: 20.000 ng  
 RT: 8.05 min Scan# 845  
 Delta R.T. -0.02 min  
 Lab File: BG040280.D  
 Acq: 2 Apr 2019 00:55

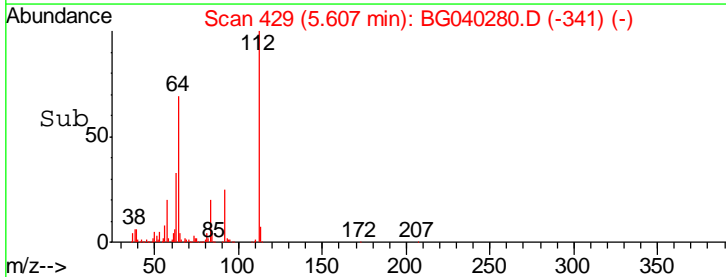
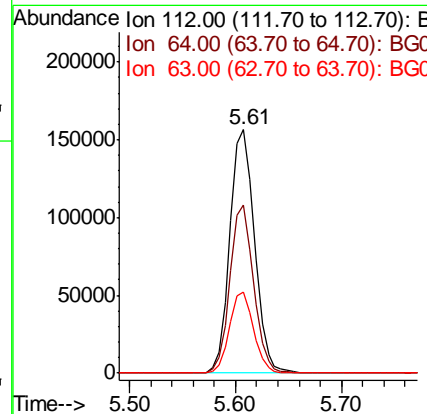
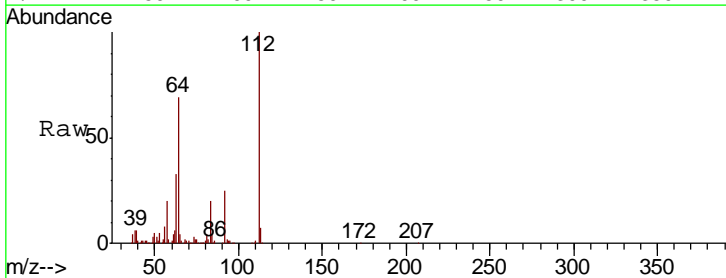
Instrument :  
 BNA\_G  
 ClientSampled :  
 TP-8D

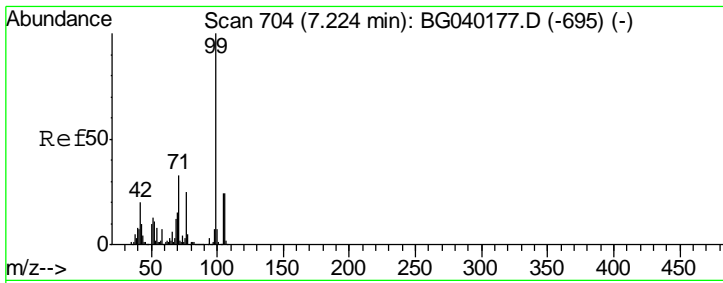
Tgt Ion	Resp	Lower	Upper
152	55003		
150	169.6	123.7	185.5
115	63.0	46.9	70.3



#5  
 2-Fluorophenol  
 Concen: 76.515 ng  
 RT: 5.61 min Scan# 429  
 Delta R.T. -0.01 min  
 Lab File: BG040280.D  
 Acq: 2 Apr 2019 00:55

Tgt Ion	Resp	Lower	Upper
112	253158		
64	69.0	54.2	81.2
63	33.1	26.4	39.6

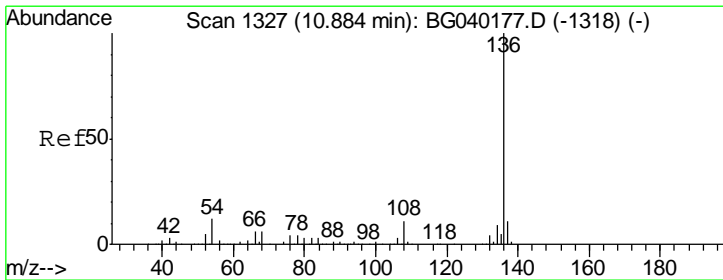
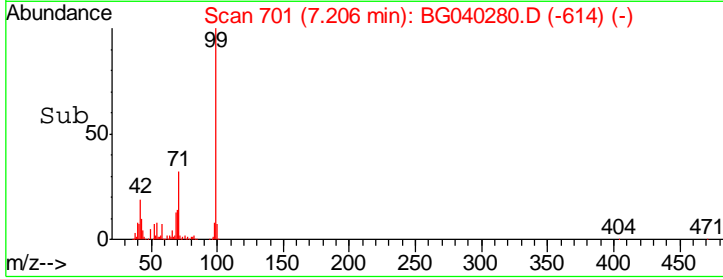
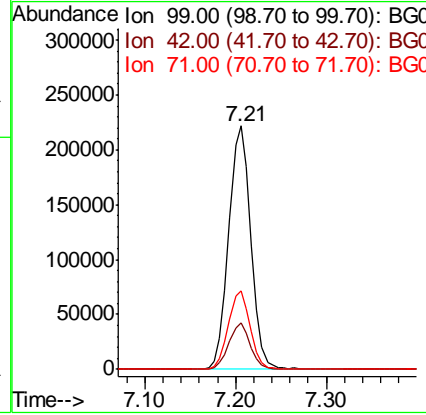
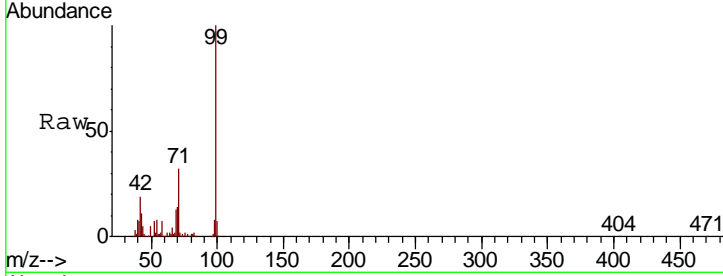




#7  
 Phenol-d6  
 Concen: 82.059 ng  
 RT: 7.21 min Scan# 701  
 Delta R.T. -0.02 min  
 Lab File: BG040280.D  
 Acq: 2 Apr 2019 00:55

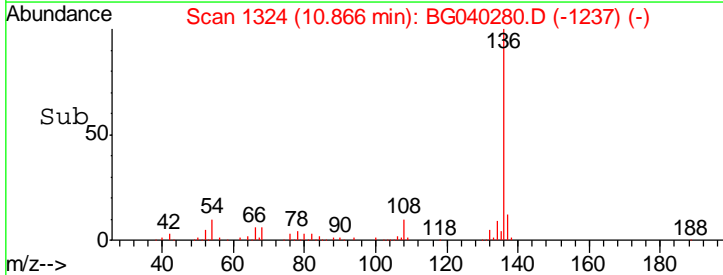
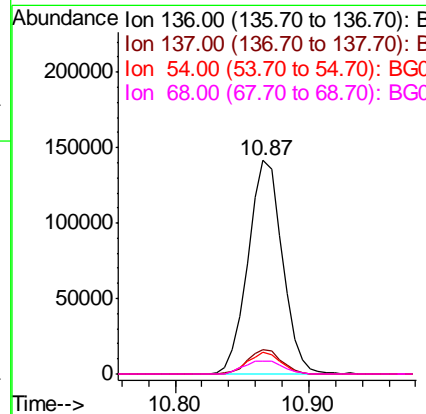
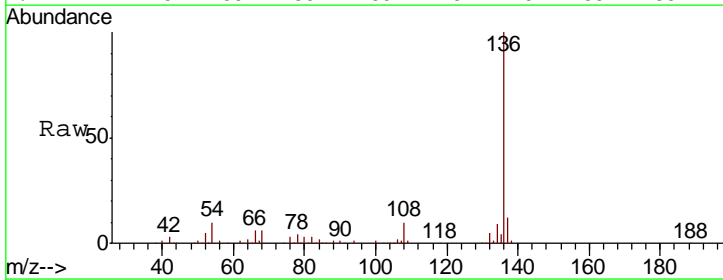
Instrument :  
 BNA\_G  
 ClientSampled :  
 TP-8D

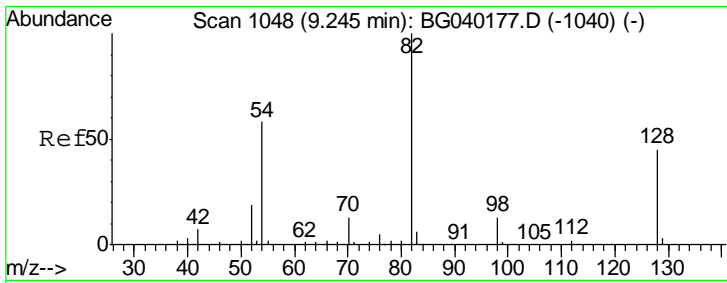
Tgt Ion	Resp	Lower	Upper
99	375221		
42	18.9	16.2	24.2
71	32.2	26.8	40.2



#21  
 Naphthalene-d8  
 Concen: 20.000 ng  
 RT: 10.87 min Scan# 1324  
 Delta R.T. -0.02 min  
 Lab File: BG040280.D  
 Acq: 2 Apr 2019 00:55

Tgt Ion	Resp	Lower	Upper
136	250593		
137	11.6	8.9	13.3
54	9.9	9.6	14.4
68	5.8	5.1	7.7

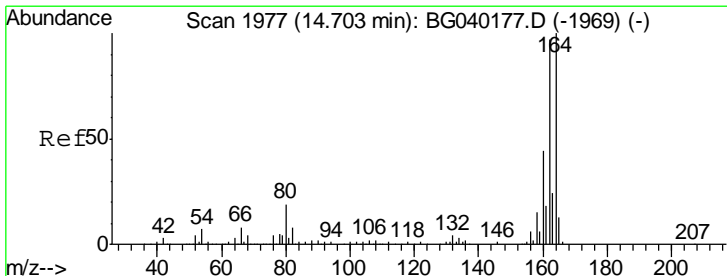
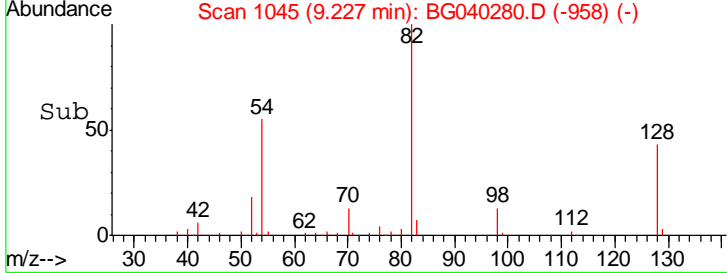
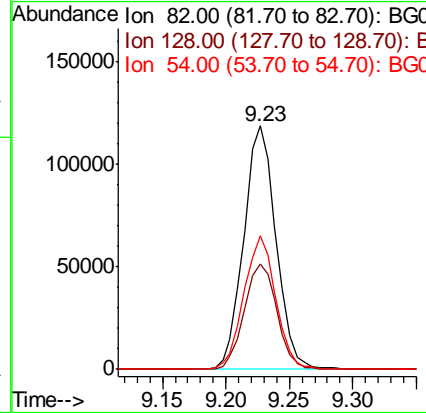
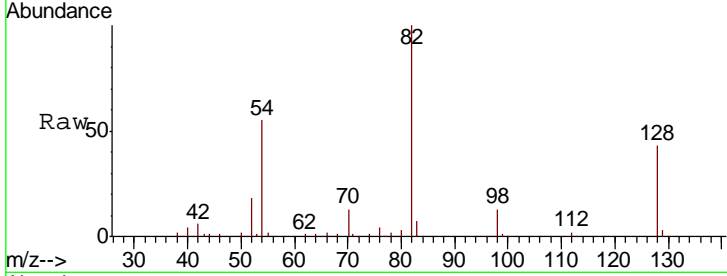




#23  
 Nitrobenzene-d5  
 Concen: 44.514 ng  
 RT: 9.23 min Scan# 1045  
 Delta R.T. -0.02 min  
 Lab File: BG040280.D  
 Acq: 2 Apr 2019 00:55

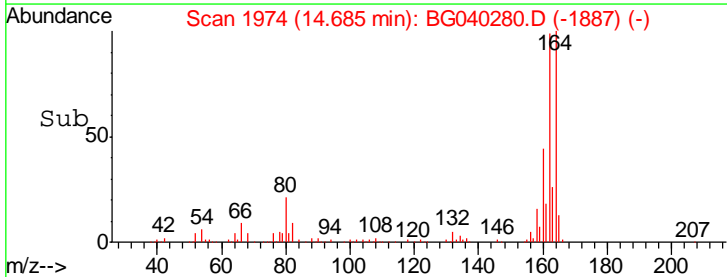
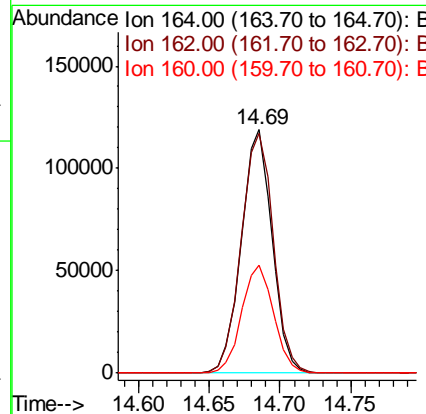
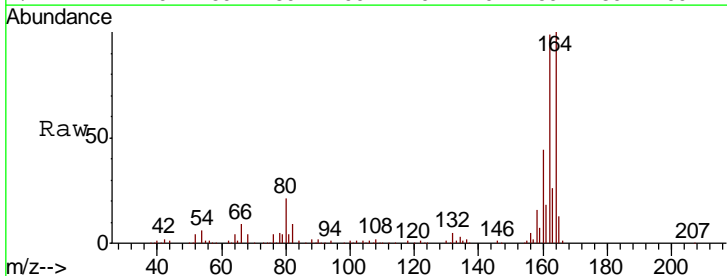
Instrument :  
 BNA\_G  
 ClientSampled :  
 TP-8D

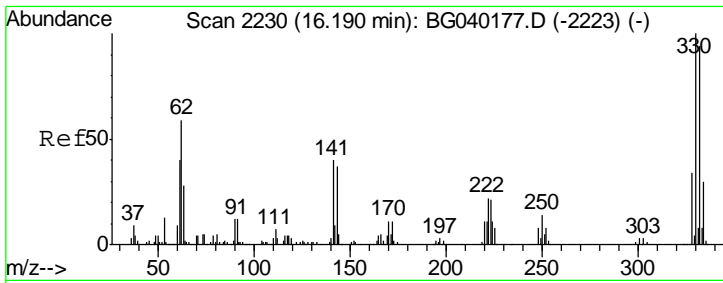
Tgt Ion	Resp	Lower	Upper
82	209863		
128	43.1	35.8	53.8
54	54.6	46.2	69.2



#39  
 Acenaphthene-d10  
 Concen: 20.000 ng  
 RT: 14.69 min Scan# 1974  
 Delta R.T. -0.02 min  
 Lab File: BG040280.D  
 Acq: 2 Apr 2019 00:55

Tgt Ion	Resp	Lower	Upper
164	181345		
162	98.7	77.4	116.2
160	44.4	35.3	52.9

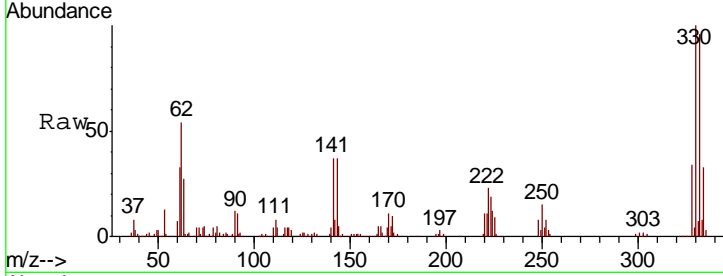




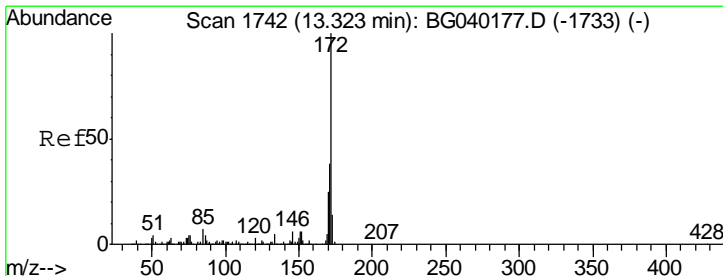
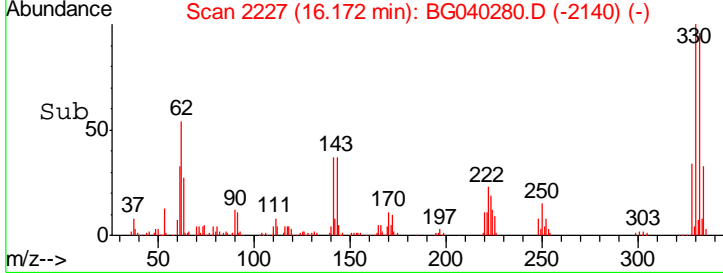
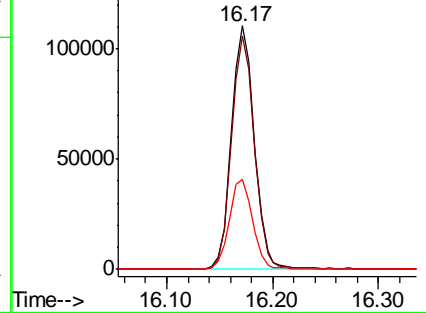
#42  
 2,4,6-Tribromophenol  
 Concen: 84.307 ng  
 RT: 16.17 min Scan# 2227  
 Delta R.T. -0.02 min  
 Lab File: BG040280.D  
 Acq: 2 Apr 2019 00:55

Instrument :  
 BNA\_G  
 ClientSampled :  
 TP-8D

Tgt Ion	Resp	Lower	Upper
330	165230		
332	95.8	76.6	115.0
141	37.8	32.6	48.8

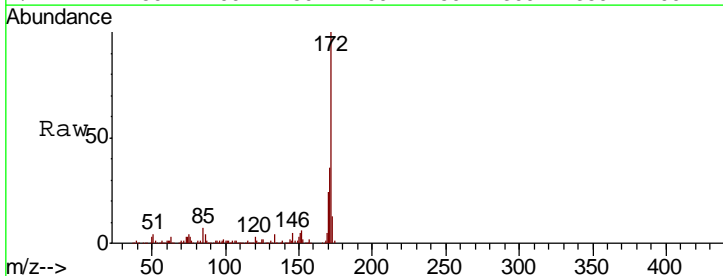


Abundance Ion 329.80 (329.50 to 330.50): E  
 Ion 331.80 (331.50 to 332.50): E  
 Ion 141.00 (140.70 to 141.70): E

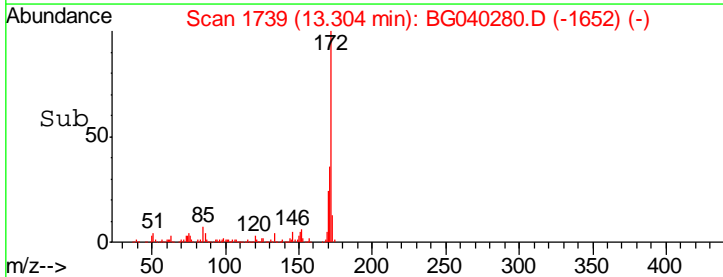
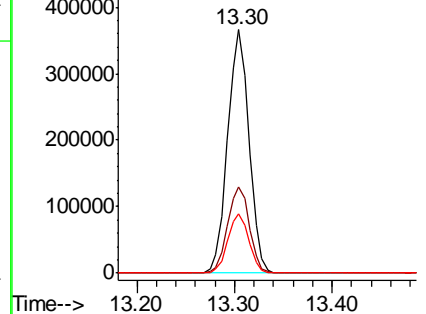


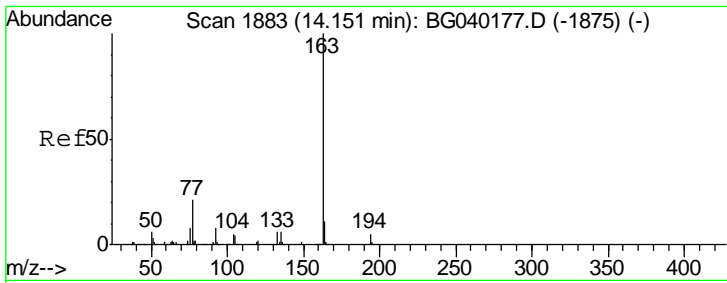
#45  
 2-Fluorobiphenyl  
 Concen: 45.368 ng  
 RT: 13.30 min Scan# 1739  
 Delta R.T. -0.02 min  
 Lab File: BG040280.D  
 Acq: 2 Apr 2019 00:55

Tgt Ion	Resp	Lower	Upper
172	555239		
171	35.6	30.5	45.7
170	24.4	20.1	30.1



Abundance Ion 172.00 (171.70 to 172.70): E  
 Ion 171.00 (170.70 to 171.70): E  
 Ion 170.00 (169.70 to 170.70): E

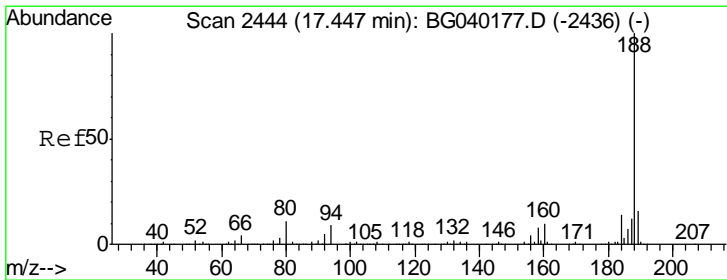
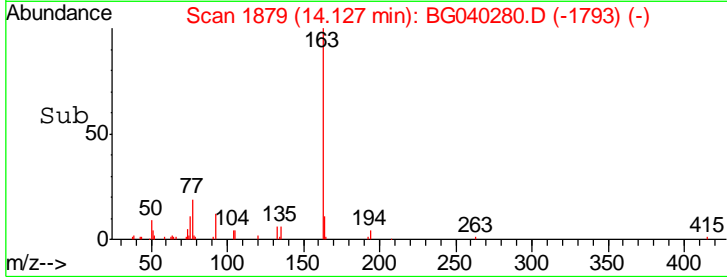
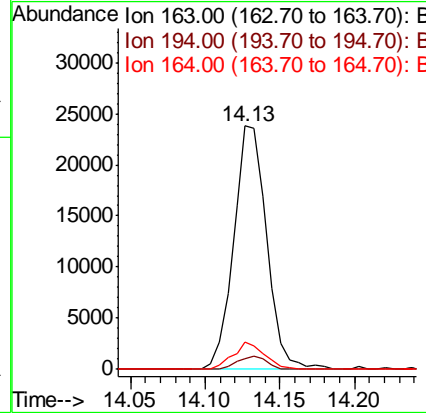
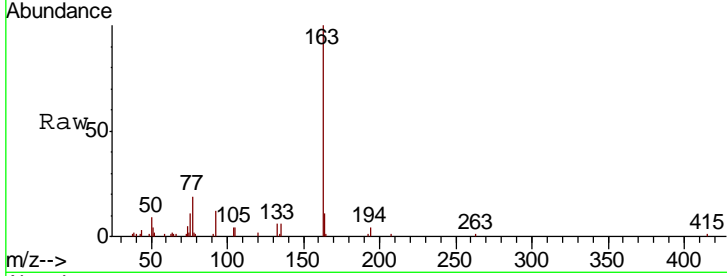




#50  
 Dimethylphthalate  
 Concen: 2.583 ng  
 RT: 14.13 min Scan# 1879  
 Delta R.T. -0.02 min  
 Lab File: BG040280.D  
 Acq: 2 Apr 2019 00:55

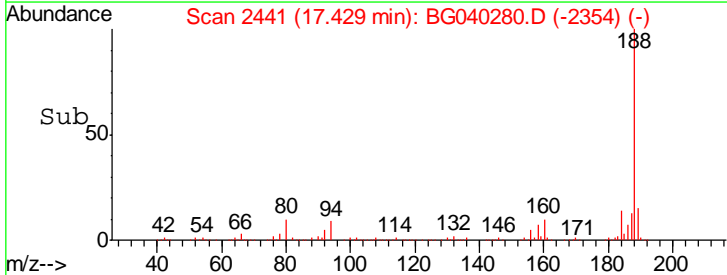
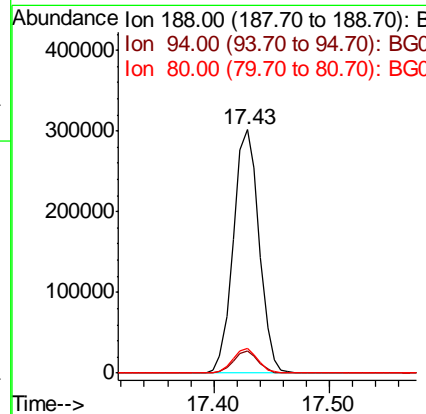
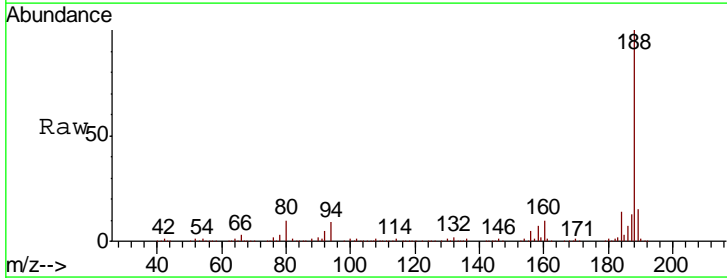
Instrument :  
 BNA\_G  
 ClientSampled :  
 TP-8D

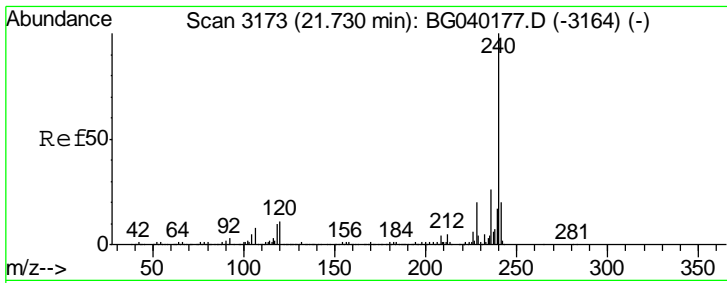
Tgt Ion	Resp	Lower	Upper
163	36662		
194	4.5	4.1	6.1
164	11.3	8.6	13.0



#64  
 Phenanthrene-d10  
 Concen: 20.000 ng  
 RT: 17.43 min Scan# 2441  
 Delta R.T. -0.02 min  
 Lab File: BG040280.D  
 Acq: 2 Apr 2019 00:55

Tgt Ion	Resp	Lower	Upper
188	465496		
94	9.0	7.0	10.4
80	10.0	8.6	13.0

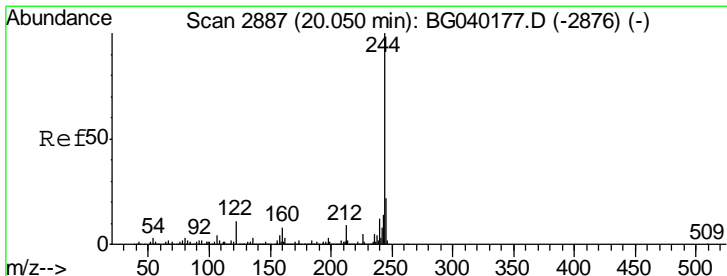
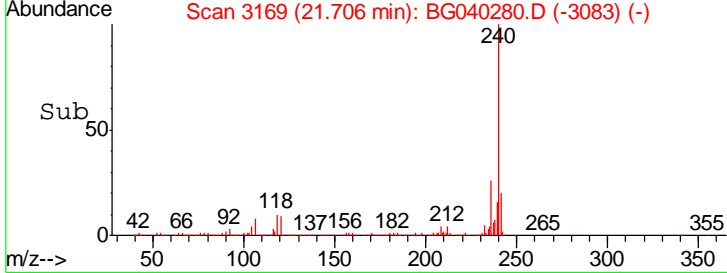
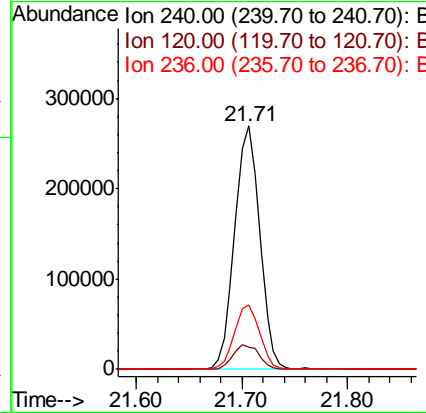
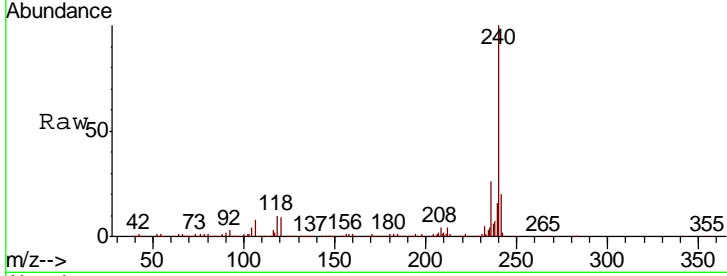




#76  
 Chrysene-d12  
 Concen: 20.000 ng  
 RT: 21.71 min Scan# 3169  
 Delta R.T. -0.02 min  
 Lab File: BG040280.D  
 Acq: 2 Apr 2019 00:55

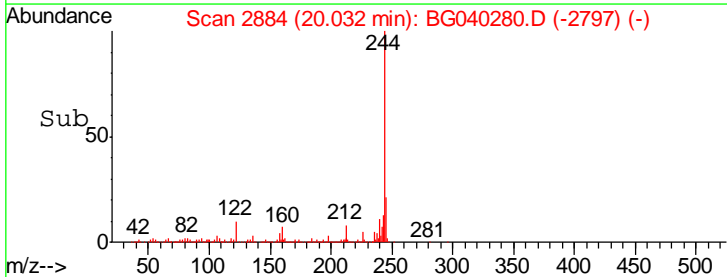
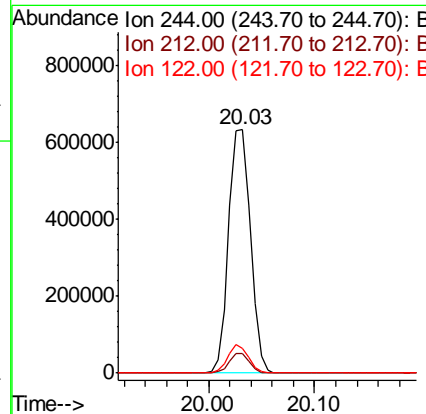
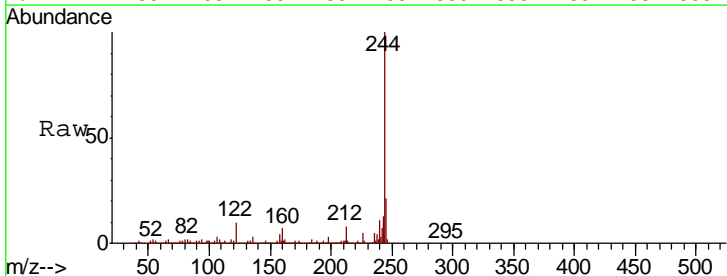
Instrument :  
 BNA\_G  
 ClientSampled :  
 TP-8D

Tgt Ion	Resp	Lower	Upper
240	442093		
120	9.1	8.4	12.6
236	26.2	20.8	31.2

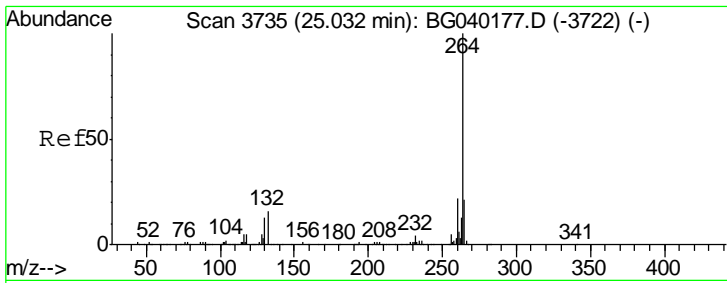


#79  
 Terphenyl-d14  
 Concen: 46.406 ng  
 RT: 20.03 min Scan# 2884  
 Delta R.T. -0.02 min  
 Lab File: BG040280.D  
 Acq: 2 Apr 2019 00:55

Tgt Ion	Resp	Lower	Upper
244	911945		
212	7.9	7.0	10.6
122	10.4	8.5	12.7







#87  
 Perylene-d12  
 Concen: 20.000 ng  
 RT: 25.01 min Scan# 3731  
 Delta R.T. -0.02 min  
 Lab File: BG040280.D  
 Acq: 2 Apr 2019 00:55

Instrument :  
 BNA\_G  
 ClientSampled :  
 TP-8D

Tgt Ion: 264 Resp: 448897

Ion	Ratio	Lower	Upper
264	100		
260	24.6	17.9	26.9
265	21.8	16.8	25.2

