

Data Path : Z:\HPCHEM1\BNA G\DATA\BG040317\  
 Data File : BG026539.D  
 Acq On : 3 Apr 2017 17:42  
 Operator : SJ/MA  
 Sample : SSTDCCC020  
 Misc :  
 ALS Vial : 2 Sample Multiplier: 1

Instrument :  
 BNA\_G  
 ClientSampleId :  
 SSTD02024

Quant Time: Apr 04 03:58:51 2017  
 Quant Method : Z:\HPCHEM1\BNA G\METHODS\SOM-EPA-BG032717MA.M  
 Quant Title : SVOA CALIBRATION  
 QLast Update : Mon Apr 03 01:47:03 2017  
 Response via : Initial Calibration

Internal Standards	R.T.	QIon	Response	Conc	Units	Dev(Min)
1) 1,4-Dichlorobenzene-d4	8.04	152	200673	20.00	ng/ul	0.00
18) Naphthalene-d8	10.84	136	847971	20.00	ng/ul	0.00
35) Acenaphthene-d10	14.64	164	485049	20.00	ng/ul	0.00
61) Phenanthrene-d10	17.38	188	1117994	20.00	ng/ul	0.00
77) Chrysene-d12	21.62	240	1213401	20.00	ng/ul	0.00
85) Perylene-d12	24.80	264	1199776	20.00	ng/ul	0.00

## System Monitoring Compounds

3) 1,4-Dioxane-d8	3.47	96	35133	8.38	ng/uL	0.00
5) Phenol-d5	7.20	99	311618	21.09	ng/ul	0.00
7) Bis-(2-Chloroethyl)ether-d	7.36	67	175553	21.20	ng/ul	0.00
9) 2-Chlorophenol-d4	7.57	132	279643	21.10	ng/ul	0.00
13) 4-Methylphenol-d8	8.74	113	249856	20.99	ng/ul	0.00
19) Nitrobenzene-d5	9.20	128	127416	21.02	ng/ul	0.00
22) 2-Nitrophenol-d4	9.92	143	152059	21.41	ng/ul	0.00
26) 2,4-Dichlorophenol-d3	10.46	165	268135	20.57	ng/ul	0.00
29) 4-Chloroaniline-d4	10.97	131	344846	26.58	ng/ul	0.00
43) Dimethylphthalate-d6	14.04	166	789270	21.01	ng/ul	0.00
46) Acenaphthylene-d8	14.34	160	989249	21.14	ng/ul	0.00
51) 4-Nitrophenol-d4	14.84	143	138910	19.01	ng/ul	0.00
57) Fluorene-d10	15.63	176	699258	20.49	ng/ul	0.00
62) 4,6-Dinitro-2-methylphenol	15.75	200	134744	18.74	ng/ul	0.00
70) Anthracene-d10	17.48	188	1058620	20.85	ng/ul	0.00
78) Pyrene-d10	19.76	212	1153729	21.32	ng/ul	0.00
89) Benzo(a)pyrene-d12	24.59	264	1093087	21.21	ng/ul	0.00

## Target Compounds

Target Compounds	R.T.	QIon	Response	Conc	Units	Ovalue
2) 1,4-Dioxane	3.50	88	36373	8.12	ng/uL#	84
4) Benzaldehyde	7.18	77	173766	21.05	ng/ul	86
6) Phenol	7.22	94	327510	21.22	ng/ul	91
8) Bis(2-Chloroethyl)ether	7.45	93	253686	21.54	ng/ul	95
10) 2-Chlorophenol	7.61	128	272798	21.28	ng/ul	98
11) 2-Methylphenol	8.47	108	255893	21.21	ng/ul	98
12) 2,2'-oxybis(1-Chloropropan	8.57	45	239949	21.61	ng/ul	99
14) Acetophenone	8.86	105	382509	21.39	ng/ul	94
15) N-Nitroso-di-n-propylamine	8.84	70	174108	20.97	ng/ul#	93
16) 4-Methylphenol	8.80	108	277576	21.25	ng/ul	98
17) Hexachloroethane	9.12	117	98388	20.73	ng/ul	91
20) Nitrobenzene	9.24	77	251068	20.85	ng/ul	92
21) Isophorone	9.76	82	478814	20.88	ng/ul	95
23) 2-Nitrophenol	9.95	139	157890	21.13	ng/ul#	85
24) 2,4-Dimethylphenol	10.00	107	278749	20.77	ng/ul	91
25) Bis(2-Chloroethoxy)methane	10.24	93	332191	20.97	ng/ul	99
27) 2,4-Dichlorophenol	10.48	162	265325	20.61	ng/ul	98
28) Naphthalene	10.89	128	851791	20.93	ng/ul	99
30) 4-Chloroaniline	10.99	127	328821	26.57	ng/ul	98
31) Hexachlorobutadiene	11.18	225	170372	20.80	ng/ul	97
32) Caprolactam	11.74	113	85948	18.91	ng/ul	92
33) 4-Chloro-3-methylphenol	12.11	107	252712	20.27	ng/ul	91
34) 2-Methylnaphthalene	12.48	142	649238	20.63	ng/ul	98

Data Path : Z:\HPCHEM1\BNA G\DATA\BG040317\  
 Data File : BG026539.D  
 Acq On : 3 Apr 2017 17:42  
 Operator : SJ/MA  
 Sample : SSTDCCC020  
 Misc :  
 ALS Vial : 2 Sample Multiplier: 1

Instrument :  
 BNA\_G  
 ClientSampleId :  
 SSTD02024

Quant Time: Apr 04 03:58:51 2017  
 Quant Method : Z:\HPCHEM1\BNA G\METHODS\SOM-EPA-BG032717MA.M  
 Quant Title : SVOA CALIBRATION  
 QLast Update : Mon Apr 03 01:47:03 2017  
 Response via : Initial Calibration

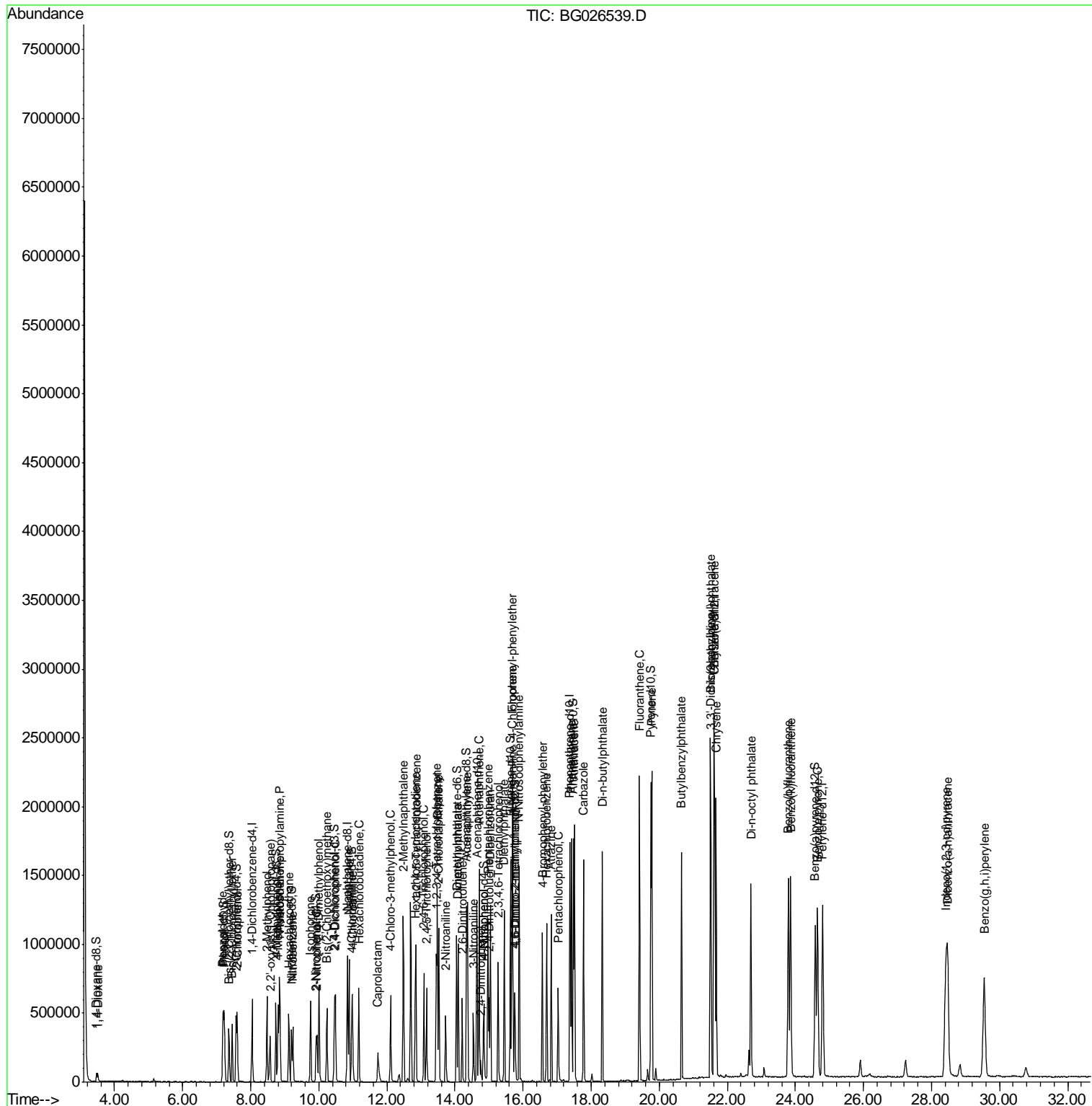
Internal Standards	R.T.	QIon	Response	Conc	Units	Dev(Min)
36) 1,2,4,5-Tetrachlorobenzene	12.85	216	320625	21.00	ng/ul	97
37) Hexachlorocyclopentadiene	12.83	237	149153	19.55	ng/ul	97
38) 2,4,6-Trichlorophenol	13.09	196	211946	20.92	ng/ul	99
39) 2,4,5-Trichlorophenol	13.16	196	217914	20.89	ng/ul	97
40) 1,1'-Biphenyl	13.48	154	817093	21.00	ng/ul	98
41) 2-Chloronaphthalene	13.53	162	617961	21.04	ng/ul#	92
42) 2-Nitroaniline	13.73	65	140140	20.52	ng/ul	92
44) Dimethylphthalate	14.09	163	756105	20.77	ng/ul#	98
45) 2,6-Dinitrotoluene	14.22	165	166010	21.13	ng/ul#	86
47) Acenaphthylene	14.37	152	973804	20.90	ng/ul	96
48) 3-Nitroaniline	14.54	138	167590	23.16	ng/ul#	87
49) Acenaphthene	14.71	153	671301	20.76	ng/ul	99
50) 2,4-Dinitrophenol	14.76	184	54479	12.31	ng/ul#	79
52) 4-Nitrophenol	14.85	109	75679	19.52	ng/ul#	58
53) Dibenzofuran	15.04	168	970200	21.10	ng/ul	91
54) 2,4-Dinitrotoluene	15.00	165	236958	20.86	ng/ul#	88
55) 2,3,4,6-Tetrachlorophenol	15.27	232	204769	20.41	ng/ul	90
56) Diethylphthalate	15.45	149	745544	20.61	ng/ul	95
58) Fluorene	15.68	166	788450	20.62	ng/ul	98
59) 4-Chlorophenyl-phenylether	15.67	204	388045	20.67	ng/ul#	86
60) 4-Nitroaniline	15.70	138	176410	19.56	ng/ul#	76
63) 4,6-Dinitro-2-methylphenol	15.77	198	143024	18.96	ng/ul#	86
64) N-Nitrosodiphenylamine	15.88	169	681408	21.30	ng/ul	98
65) 4-Bromophenyl-phenylether	16.57	248	258420	21.02	ng/ul#	83
66) Hexachlorobenzene	16.69	284	277696	21.07	ng/ul#	85
67) Atrazine	16.83	200	258828	20.90	ng/ul	99
68) Pentachlorophenol	17.04	266	150443	19.18	ng/ul	98
69) Phenanthrene	17.42	178	1218876	20.80	ng/ul	98
71) Anthracene	17.51	178	1258749	21.00	ng/ul	98
72) 1,2,3,4-Tetrachlorobenzene	13.45	216	315627	21.43	ng/uL	98
73) Pentachlorobenzene	14.97	250	356878	21.30	ng/uL	100
74) Carbazole	17.78	167	1132890	21.98	ng/ul	96
75) Di-n-butylphthalate	18.33	149	1282876	21.12	ng/ul	98
76) Fluoranthene	19.42	202	1413343	22.58	ng/ul	99
79) Pyrene	19.79	202	1442333	21.35	ng/ul	99
80) Butylbenzylphthalate	20.65	149	556785	20.83	ng/ul	93
81) 3,3'-Dichlorobenzidine	21.52	252	505678	24.01	ng/ul#	97
82) Benzo(a)anthracene	21.61	228	1388277	21.15	ng/ul	97
83) Bis(2-ethylhexyl)phthalate	21.51	149	805349	21.09	ng/ul#	92
84) Chrysene	21.67	228	1267743	20.89	ng/ul	96
86) Di-n-octyl phthalate	22.69	149	1369258	22.19	ng/ul#	96
87) Benzo(b)fluoranthene	23.79	252	1433348	21.06	ng/ul	99
88) Benzo(k)fluoranthene	23.86	252	1374403	21.15	ng/ul	97
90) Benzo(a)pyrene	24.66	252	1395792	21.20	ng/ul	98
91) Indeno(1,2,3-cd)pyrene	28.42	276	1635746	20.61	ng/ul#	93
92) Dibenzo(a,h)anthracene	28.48	278	1392171	21.01	ng/ul	98
93) Benzo(g,h,i)perylene	29.54	276	1371952	20.78	ng/ul	97

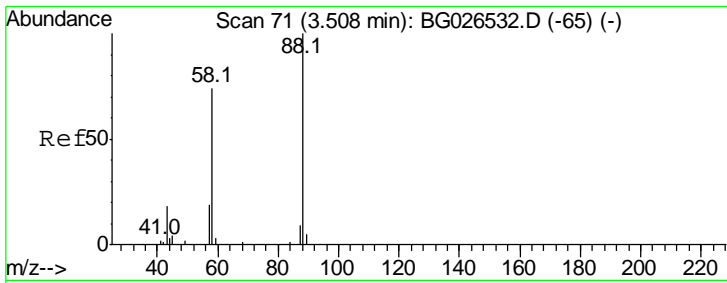
(#) = qualifier out of range (m) = manual integration (+) = signals summed

Data Path : Z:\HPCHEM1\BNA G\DATA\BG040317\  
 Data File : BG026539.D  
 Acq On : 3 Apr 2017 17:42  
 Operator : SJ/MA  
 Sample : SSTDCCC020  
 Misc :  
 ALS Vial : 2 Sample Multiplier: 1

Instrument :  
 BNA\_G  
 Client Sampled :  
 SSTD02024

Quant Time: Apr 04 03:58:51 2017  
 Quant Method : Z:\HPCHEM1\BNA G\METHODS\SOM-EPA-BG032717MA.M  
 Quant Title : SVOA CALIBRATION  
 QLast Update : Mon Apr 03 01:47:03 2017  
 Response via : Initial Calibration

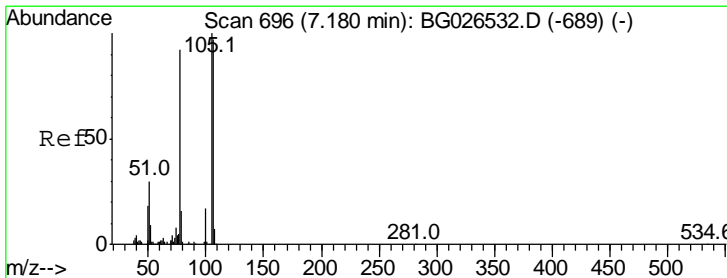
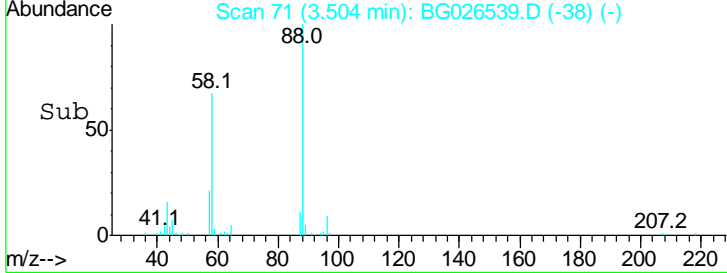
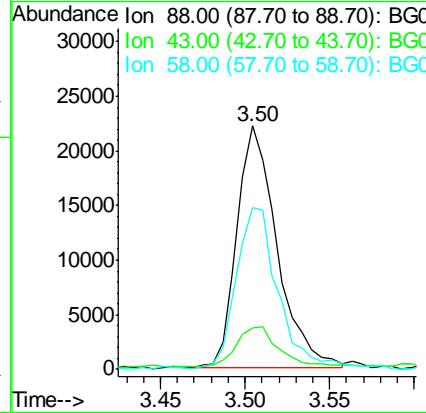
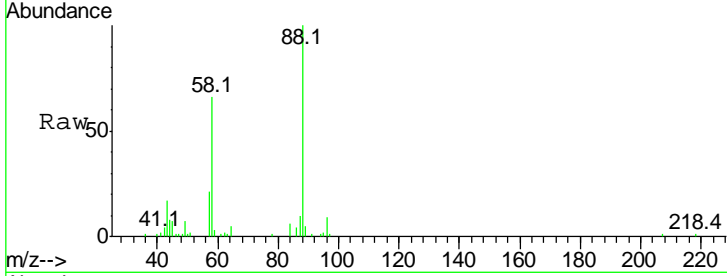




#2  
 1,4-Dioxane  
 Concen: 8.12 ng/uL  
 RT: 3.50 min Scan# 71  
 Delta R.T. -0.00 min  
 Lab File: BG026539.D  
 Acq: 3 Apr 2017 17:42

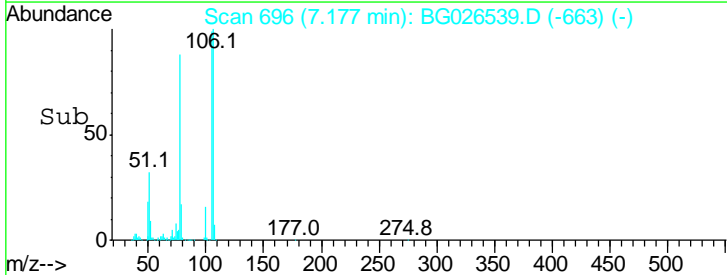
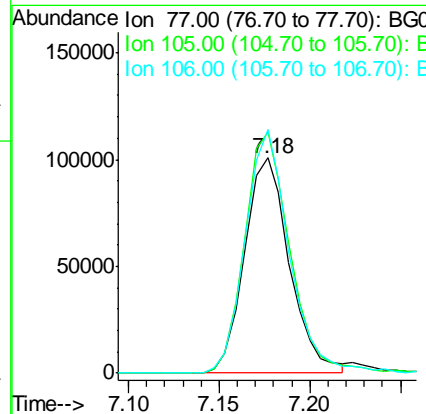
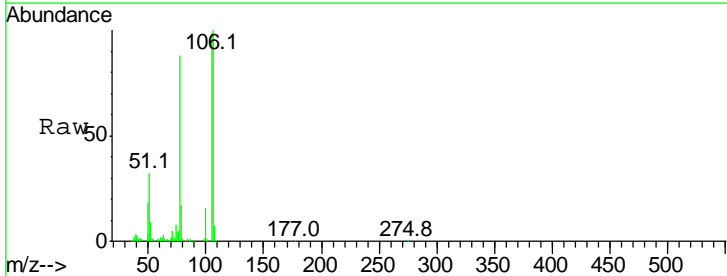
Instrument :  
 BNA\_G  
 ClientSampleId :  
 SSTD02024

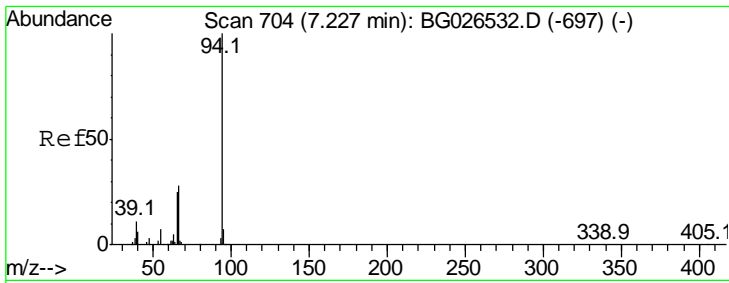
Tgt Ion	Resp	Lower	Upper
88	36373		
88	100		
43	16.9	21.0	31.6#
58	70.7	47.8	71.8



#4  
 Benzaldehyde  
 Concen: 21.05 ng/ul  
 RT: 7.18 min Scan# 696  
 Delta R.T. -0.00 min  
 Lab File: BG026539.D  
 Acq: 3 Apr 2017 17:42

Tgt Ion	Resp	Lower	Upper
77	173766		
77	100		
105	112.2	80.6	120.8
106	113.1	77.7	116.5

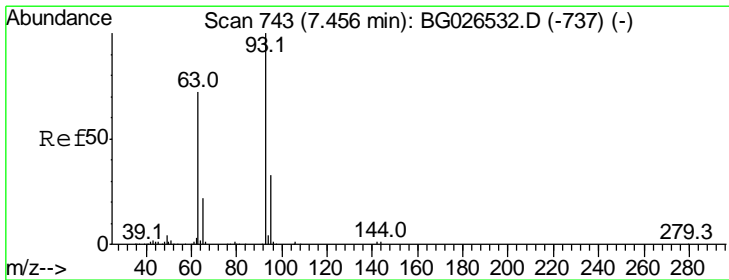
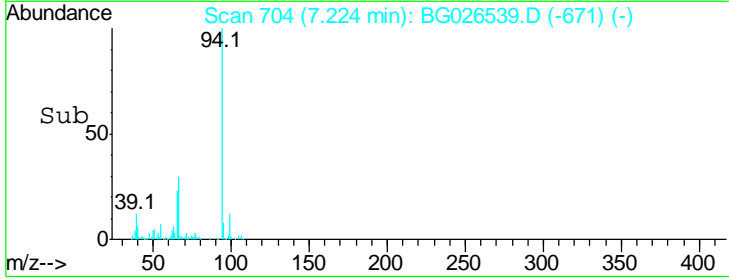
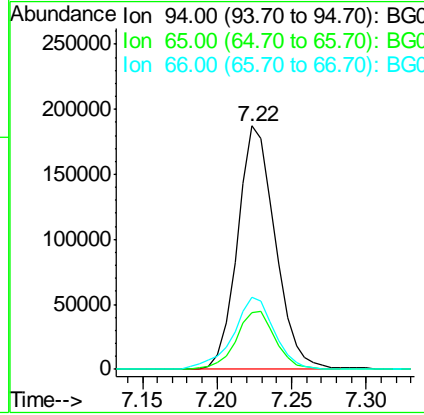
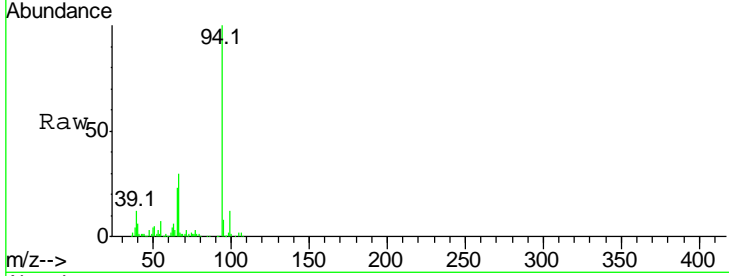




#6  
 Phenol  
 Concen: 21.22 ng/ul  
 RT: 7.22 min Scan# 704  
 Delta R.T. -0.00 min  
 Lab File: BG026539.D  
 Acq: 3 Apr 2017 17:42

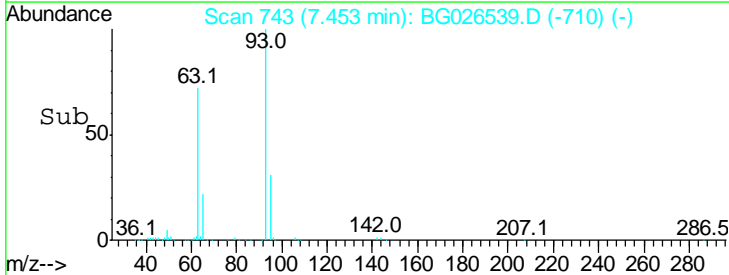
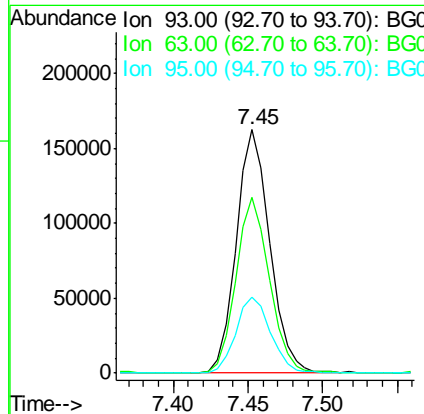
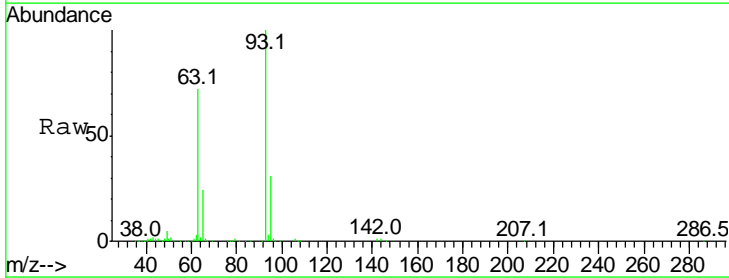
Instrument :  
 BNA\_G  
 ClientSampled :  
 SSTD02024

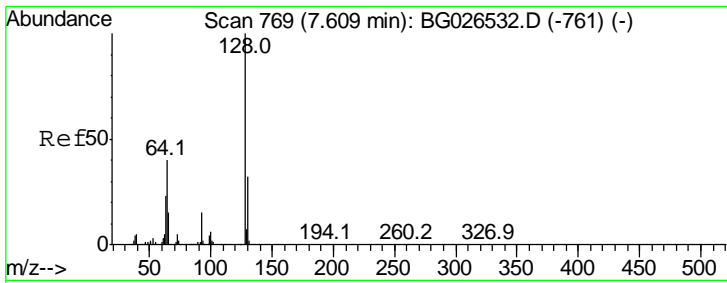
Tgt Ion	Resp	Lower	Upper
94	100		
65	23.4	21.0	31.6
66	29.6	29.3	43.9



#8  
 Bis(2-Chloroethyl)ether  
 Concen: 21.54 ng/ul  
 RT: 7.45 min Scan# 743  
 Delta R.T. -0.00 min  
 Lab File: BG026539.D  
 Acq: 3 Apr 2017 17:42

Tgt Ion	Resp	Lower	Upper
93	100		
63	72.1	53.5	80.3
95	31.2	26.2	39.2

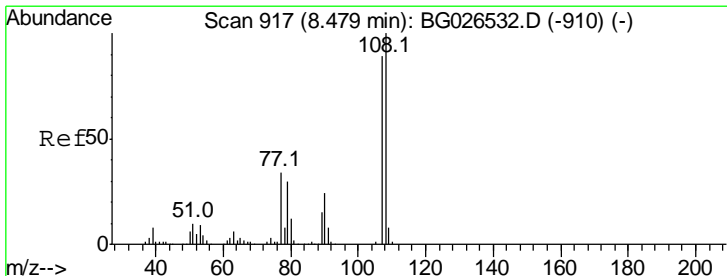
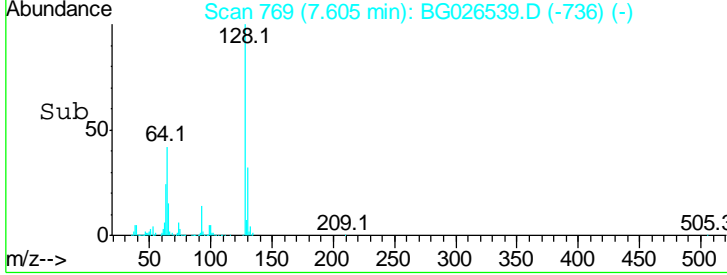
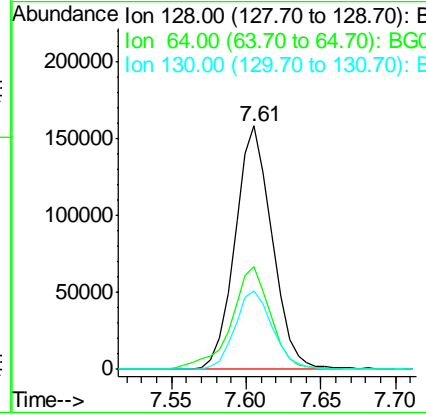
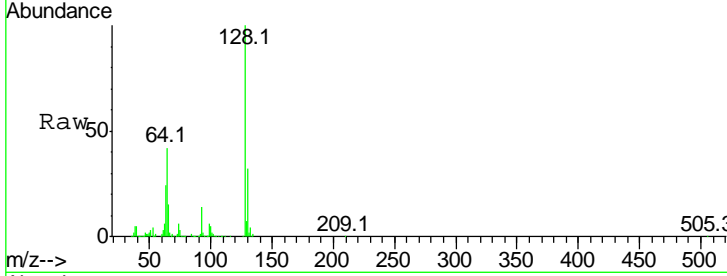




#10  
 2-Chlorophenol  
 Concen: 21.28 ng/ul  
 RT: 7.61 min Scan# 769  
 Delta R.T. -0.00 min  
 Lab File: BG026539.D  
 Acq: 3 Apr 2017 17:42

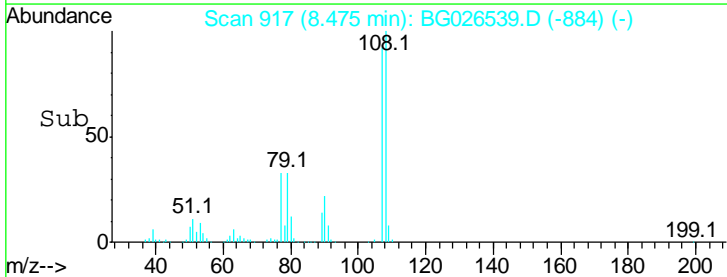
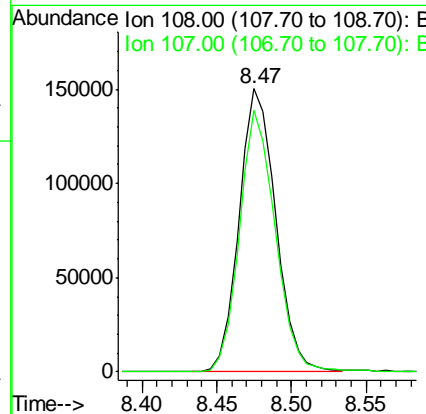
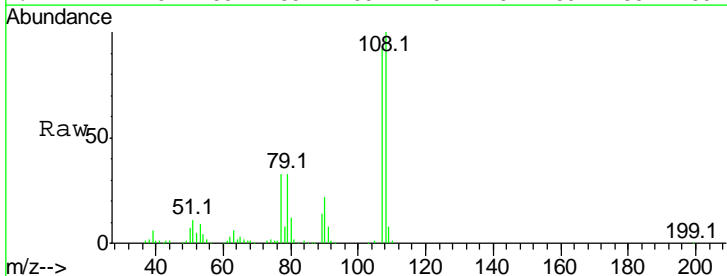
**Instrument :**  
 BNA\_G  
**ClientSampled :**  
 SSTD02024

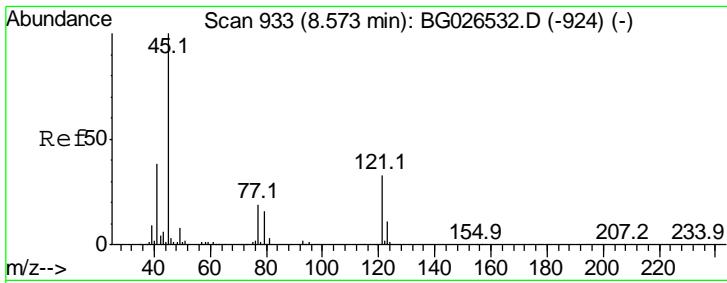
Tgt Ion	Resp	Lower	Upper
128	100		
64	42.2	31.9	47.9
130	32.3	25.6	38.4



#11  
 2-Methylphenol  
 Concen: 21.21 ng/ul  
 RT: 8.47 min Scan# 917  
 Delta R.T. -0.00 min  
 Lab File: BG026539.D  
 Acq: 3 Apr 2017 17:42

Tgt Ion	Resp	Lower	Upper
108	100		
107	92.3	72.4	108.6

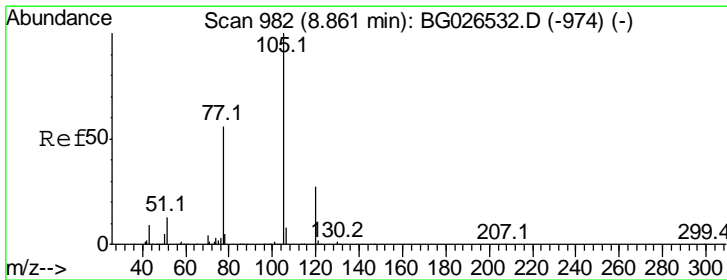
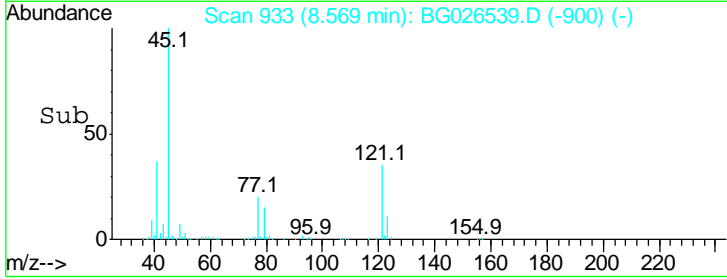
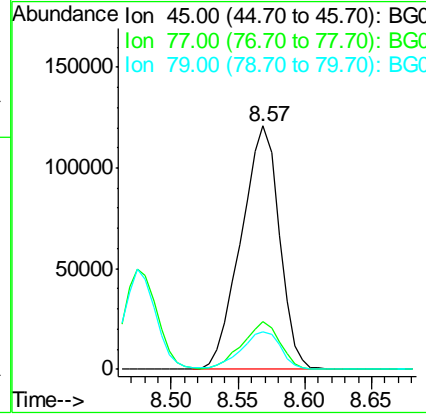
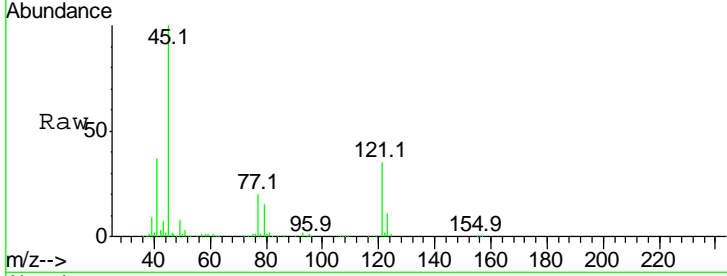




#12  
 2,2'-oxybis(1-Chloropropane)  
 Concen: 21.61 ng/ul  
 RT: 8.57 min Scan# 933  
 Delta R.T. -0.00 min  
 Lab File: BG026539.D  
 Acq: 3 Apr 2017 17:42

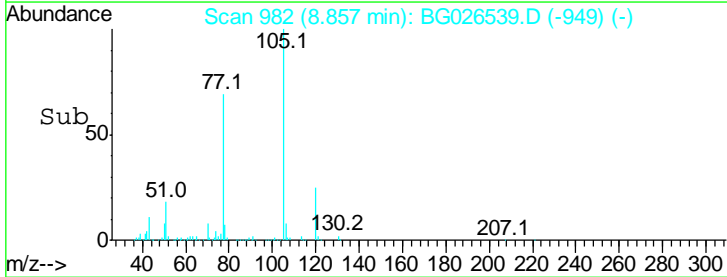
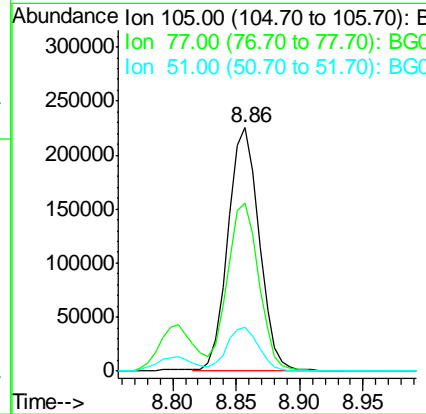
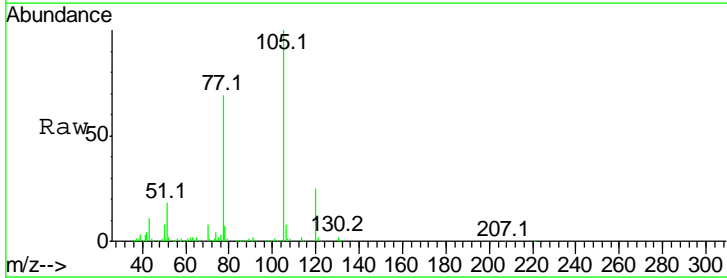
Instrument :  
 BNA\_G  
 ClientSampled :  
 SSTD02024

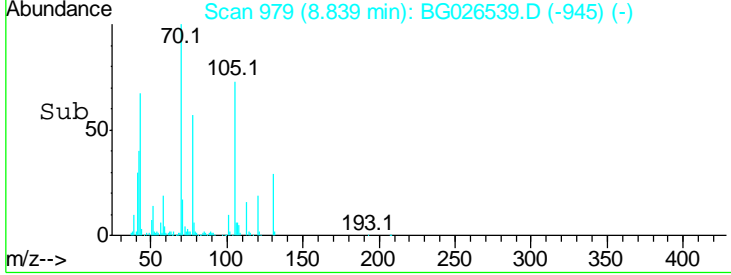
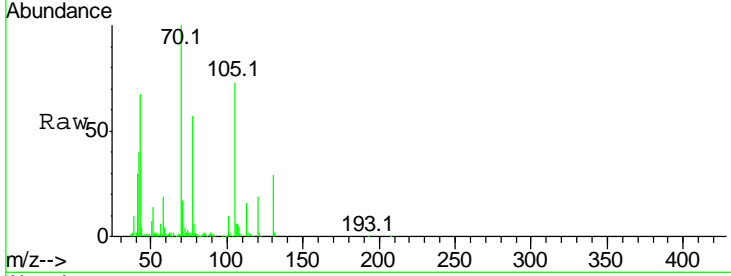
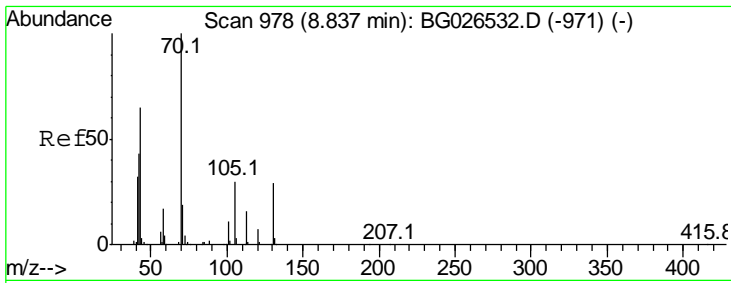
Tgt Ion	Resp	Lower	Upper
45	100		
77	19.6	15.9	23.9
79	15.4	12.5	18.7



#14  
 Acetophenone  
 Concen: 21.39 ng/ul  
 RT: 8.86 min Scan# 982  
 Delta R.T. -0.00 min  
 Lab File: BG026539.D  
 Acq: 3 Apr 2017 17:42

Tgt Ion	Resp	Lower	Upper
105	100		
77	68.8	59.0	88.4
51	17.8	16.4	24.6



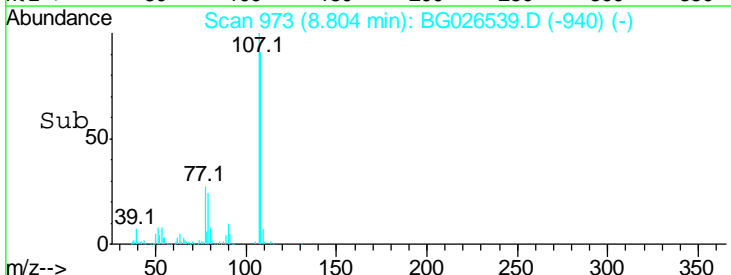
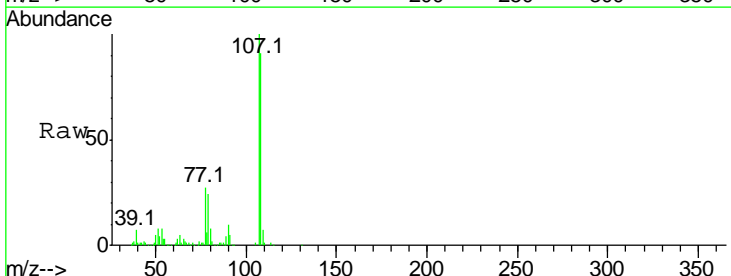
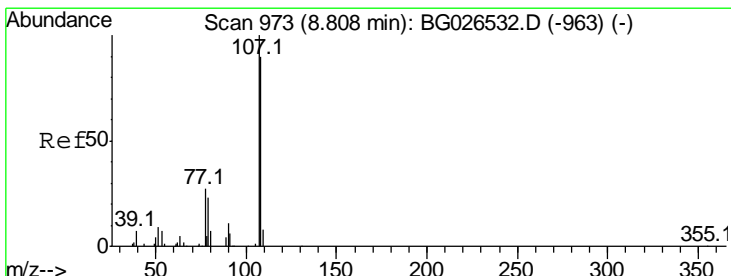
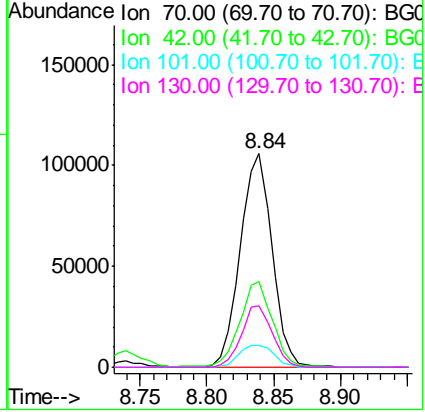


#15  
 N-Nitroso-di-n-propylamine  
 Concen: 20.97 ng/ul  
 RT: 8.84 min Scan# 979  
 Delta R.T. 0.00 min  
 Lab File: BG026539.D  
 Acq: 3 Apr 2017 17:42

**Instrument :**  
 BNA\_G  
**ClientSampled :**  
 SSTD02024

Tgt Ion: 70 Resp: 174108

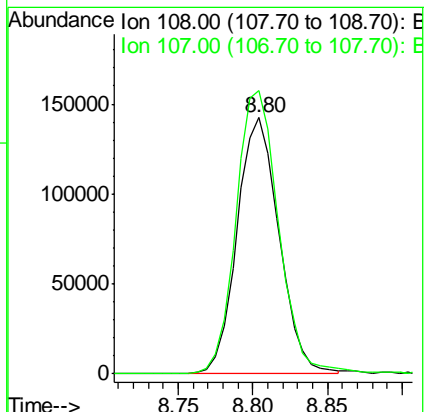
Ion	Ratio	Lower	Upper
70	100		
42	40.4	35.4	53.0
101	10.5	8.4	12.6
130	28.5	18.2	27.4



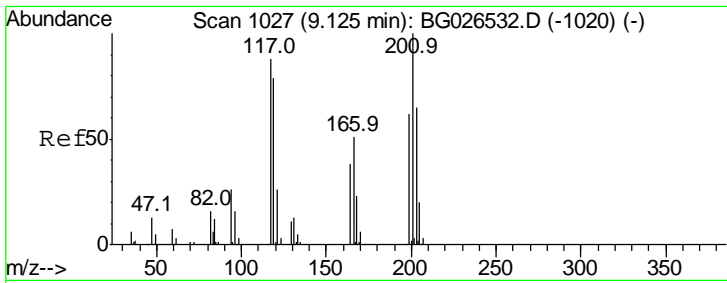
#16  
 4-Methylphenol  
 Concen: 21.25 ng/ul  
 RT: 8.80 min Scan# 973  
 Delta R.T. -0.00 min  
 Lab File: BG026539.D  
 Acq: 3 Apr 2017 17:42

Tgt Ion: 108 Resp: 277576

Ion	Ratio	Lower	Upper
108	100		
107	110.4	90.3	135.5



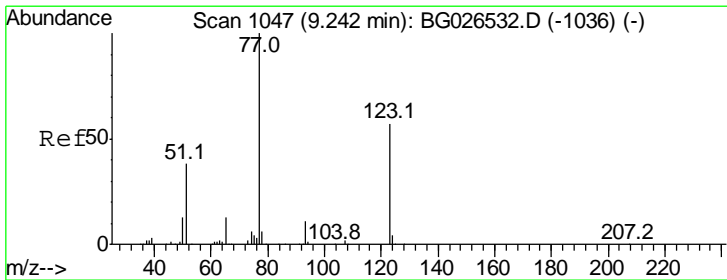
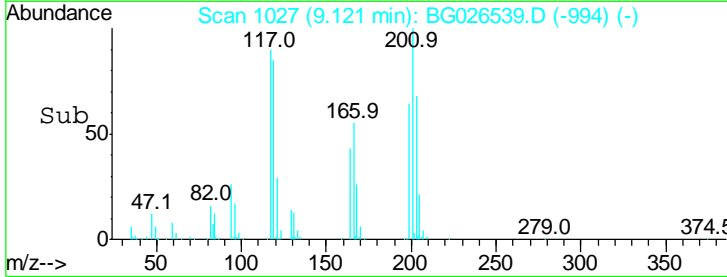
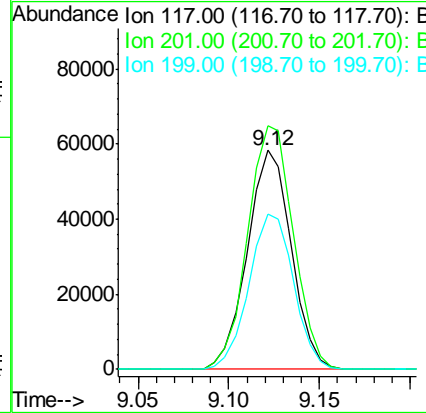
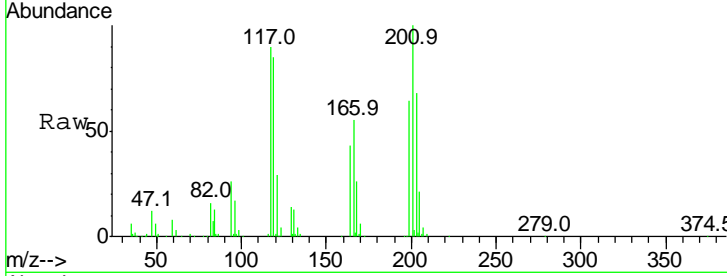




#17  
 Hexachloroethane  
 Concen: 20.73 ng/ul  
 RT: 9.12 min Scan# 1027  
 Delta R.T. -0.00 min  
 Lab File: BG026539.D  
 Acq: 3 Apr 2017 17:42

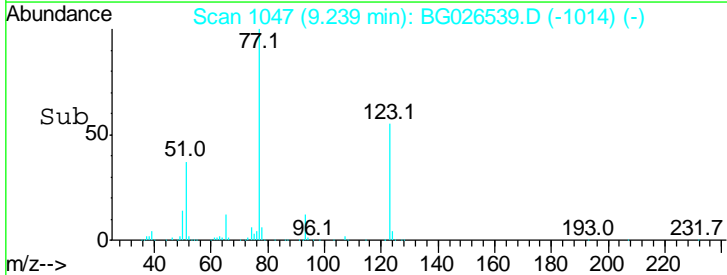
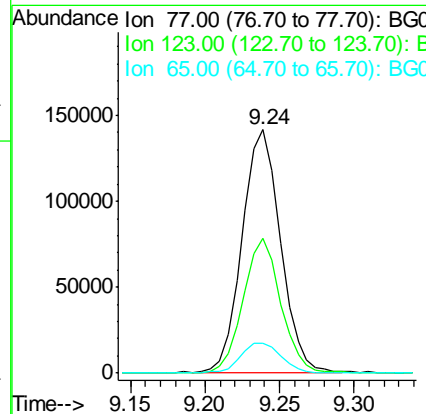
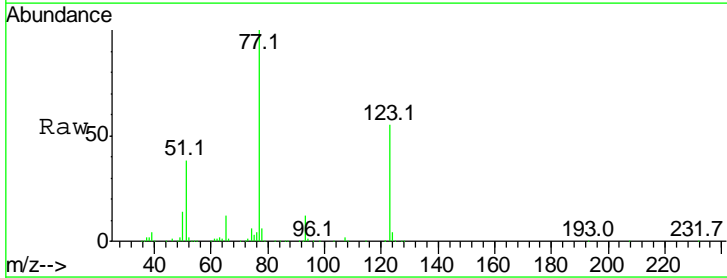
Instrument :  
 BNA\_G  
 ClientSampled :  
 SSTD02024

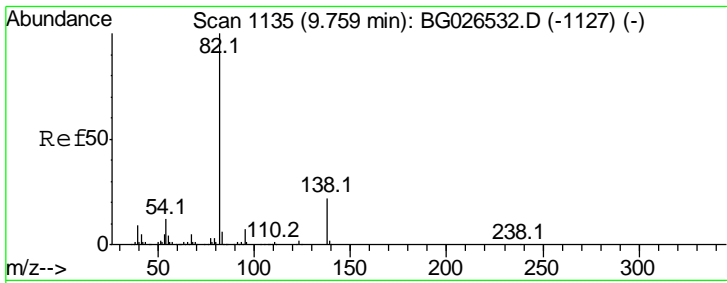
Tgt Ion	Resp	Lower	Upper
117	98388		
201	111.2	81.5	122.3
199	70.7	50.6	76.0



#20  
 Nitrobenzene  
 Concen: 20.85 ng/ul  
 RT: 9.24 min Scan# 1047  
 Delta R.T. -0.00 min  
 Lab File: BG026539.D  
 Acq: 3 Apr 2017 17:42

Tgt Ion	Resp	Lower	Upper
77	251068		
123	55.5	39.0	58.4
65	12.3	10.4	15.6

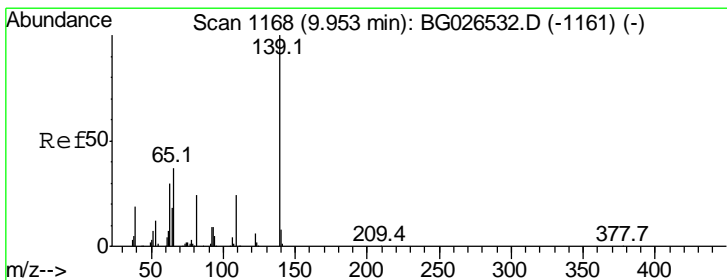
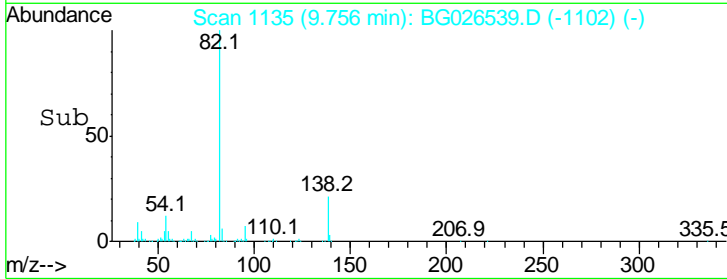
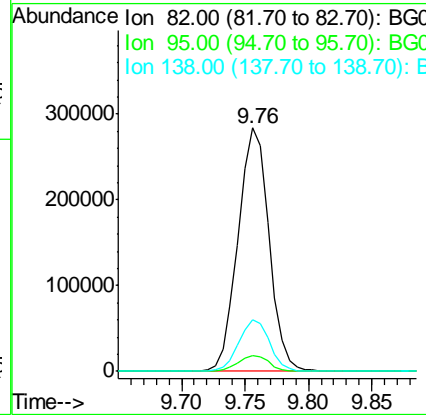
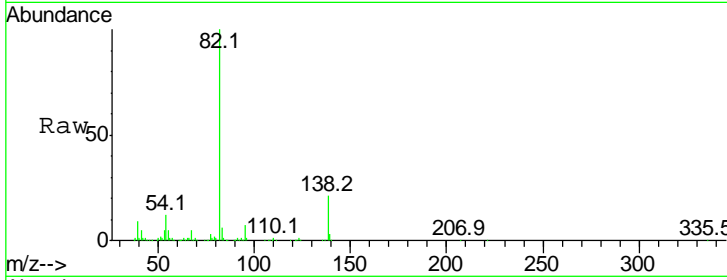




#21  
 Isophorone  
 Concen: 20.88 ng/ul  
 RT: 9.76 min Scan# 1135  
 Delta R.T. -0.00 min  
 Lab File: BG026539.D  
 Acq: 3 Apr 2017 17:42

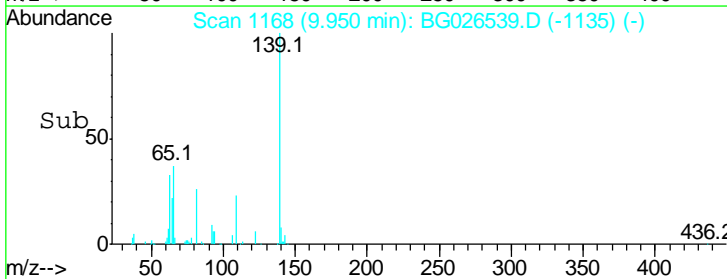
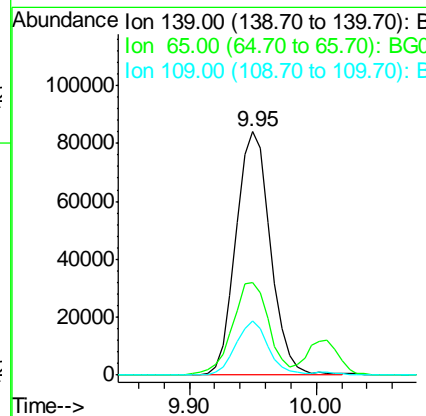
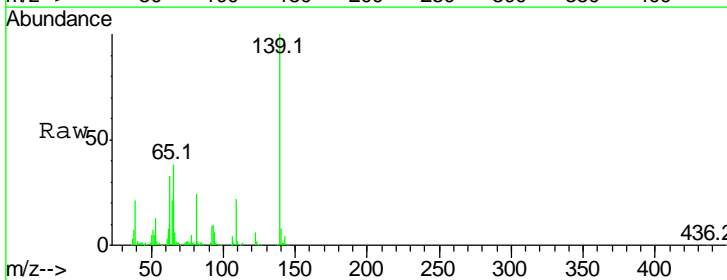
Instrument :  
 BNA\_G  
 ClientSampled :  
 SSTD02024

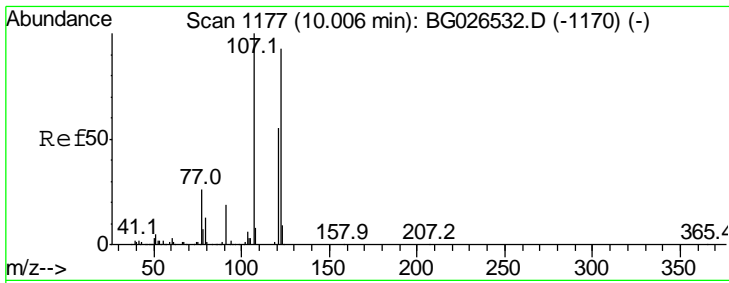
Tgt Ion	Resp	Lower	Upper
82	478814		
95	6.7	6.4	9.6
138	21.3	14.9	22.3



#23  
 2-Nitrophenol  
 Concen: 21.13 ng/ul  
 RT: 9.95 min Scan# 1168  
 Delta R.T. -0.00 min  
 Lab File: BG026539.D  
 Acq: 3 Apr 2017 17:42

Tgt Ion	Resp	Lower	Upper
139	157890		
65	37.9	36.3	54.5
109	22.2	26.4	39.6#

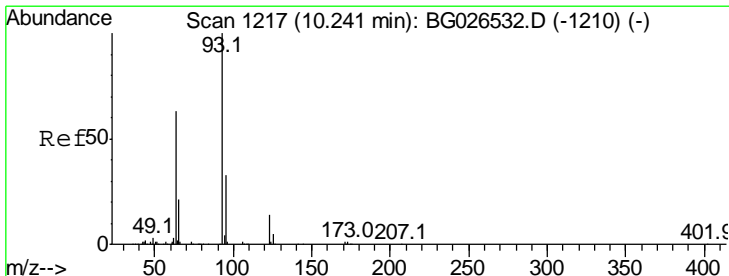
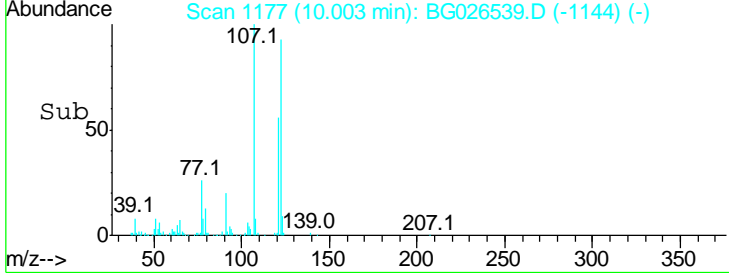
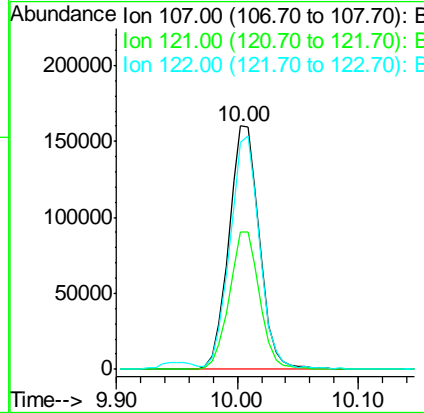
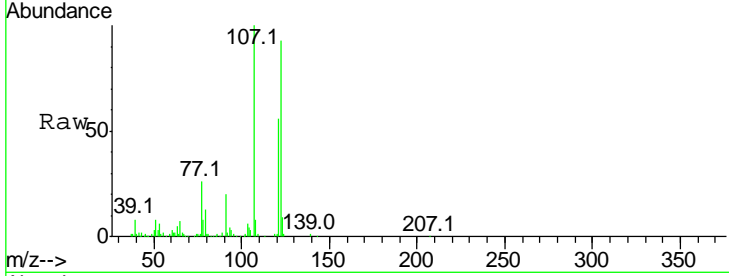




#24  
 2,4-Dimethylphenol  
 Concen: 20.77 ng/ul  
 RT: 10.00 min Scan# 1177  
 Delta R.T. -0.00 min  
 Lab File: BG026539.D  
 Acq: 3 Apr 2017 17:42

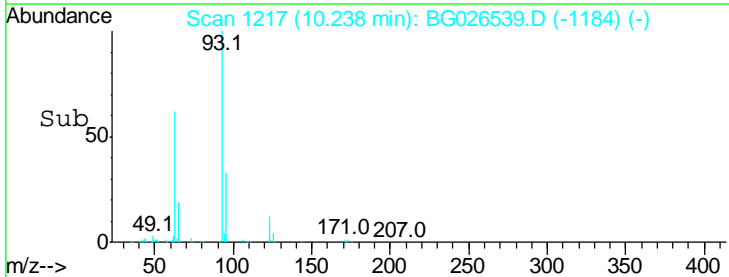
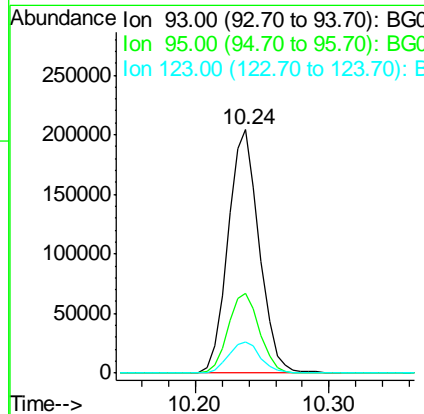
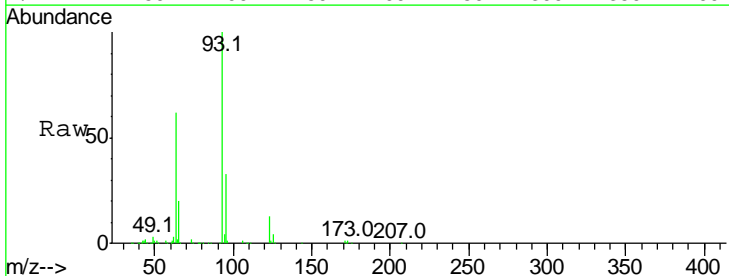
Instrument :  
 BNA\_G  
 ClientSampled :  
 SSTD02024

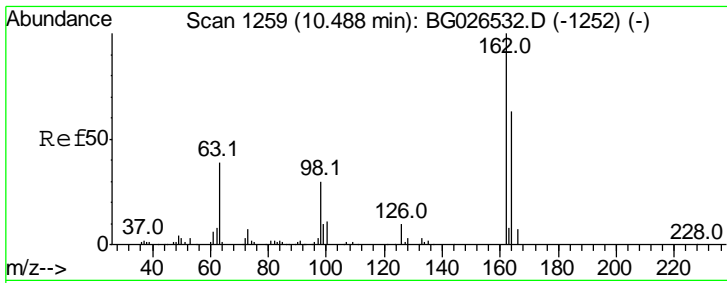
Tgt Ion	Resp	Lower	Upper
107	100		
121	56.3	40.6	61.0
122	93.1	67.8	101.6



#25  
 Bis(2-Chloroethoxy)methane  
 Concen: 20.97 ng/ul  
 RT: 10.24 min Scan# 1217  
 Delta R.T. -0.00 min  
 Lab File: BG026539.D  
 Acq: 3 Apr 2017 17:42

Tgt Ion	Resp	Lower	Upper
93	100		
95	32.7	25.8	38.8
123	12.6	9.8	14.8

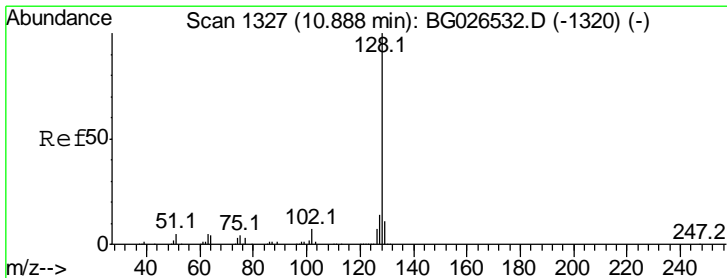
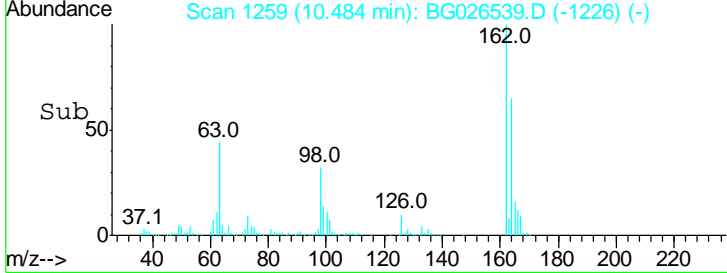
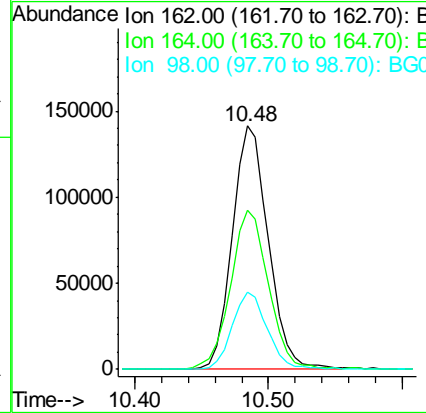
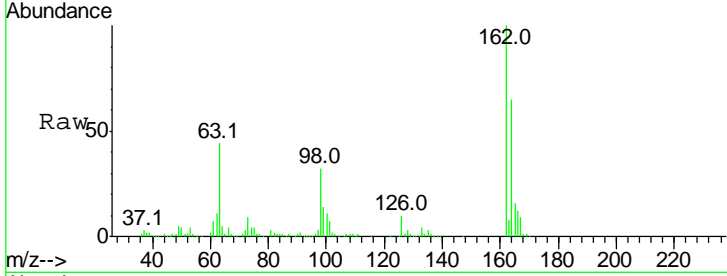




#27  
 2,4-Dichlorophenol  
 Concen: 20.61 ng/ul  
 RT: 10.48 min Scan# 1259  
 Delta R.T. -0.00 min  
 Lab File: BG026539.D  
 Acq: 3 Apr 2017 17:42

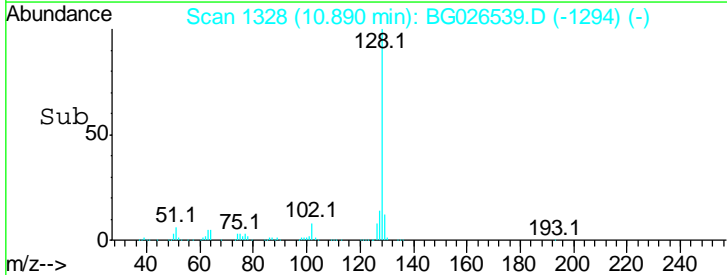
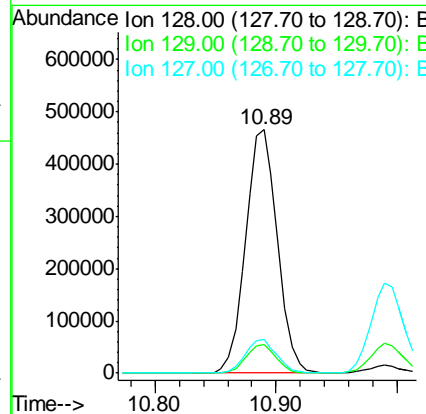
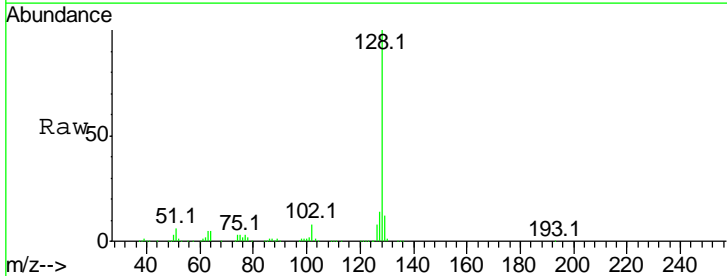
Instrument :  
 BNA\_G  
 ClientSampled :  
 SSTD02024

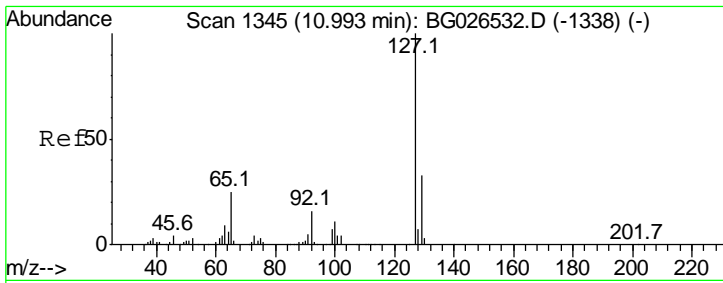
Tgt Ion	Resp	Lower	Upper
162	100		
164	65.2	52.1	78.1
98	31.6	28.4	42.6



#28  
 Naphthalene  
 Concen: 20.93 ng/ul  
 RT: 10.89 min Scan# 1328  
 Delta R.T. 0.00 min  
 Lab File: BG026539.D  
 Acq: 3 Apr 2017 17:42

Tgt Ion	Resp	Lower	Upper
128	100		
129	11.5	8.8	13.2
127	13.6	10.5	15.7

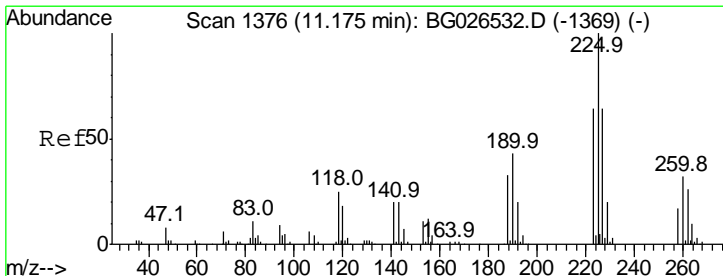
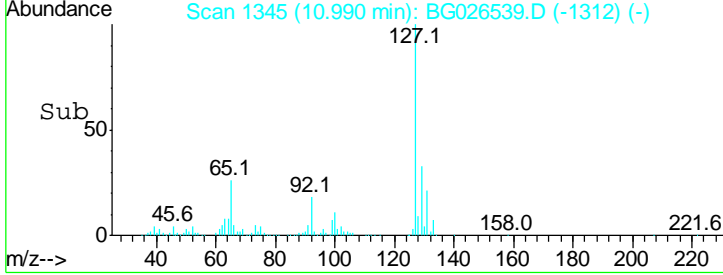
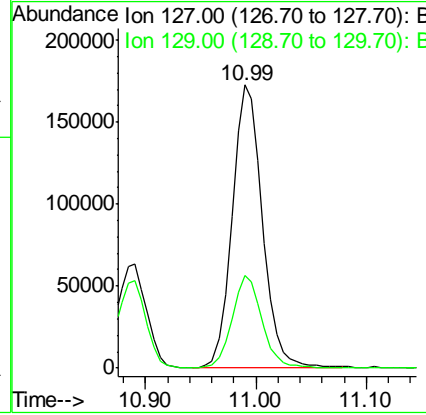
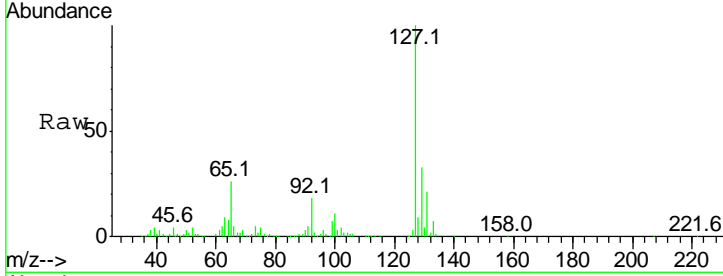




#30  
 4-Chloroaniline  
 Concen: 26.57 ng/ul  
 RT: 10.99 min Scan# 1345  
 Delta R.T. -0.00 min  
 Lab File: BG026539.D  
 Acq: 3 Apr 2017 17:42

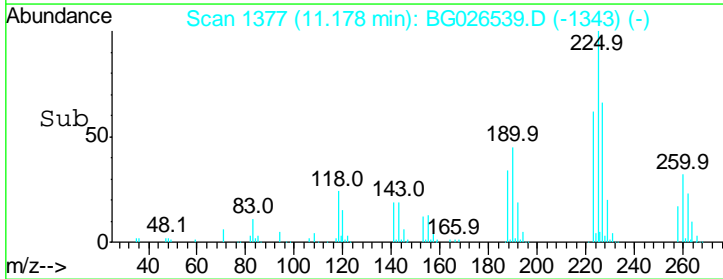
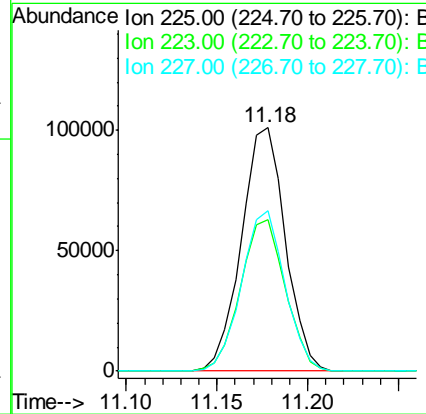
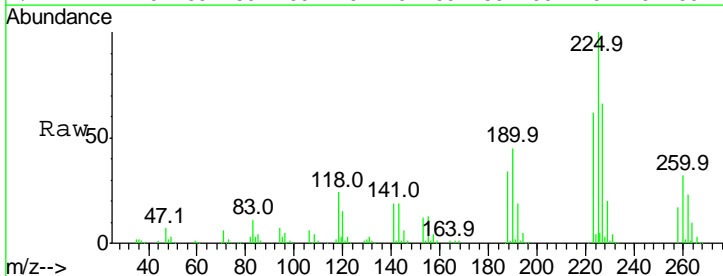
Instrument :  
 BNA\_G  
 ClientSampled :  
 SSTD02024

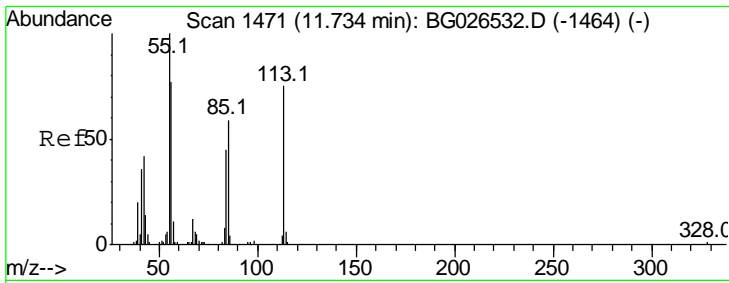
Tgt Ion	Resp	Lower	Upper
127	100		
129	32.9	25.4	38.2



#31  
 Hexachlorobutadiene  
 Concen: 20.80 ng/ul  
 RT: 11.18 min Scan# 1377  
 Delta R.T. 0.00 min  
 Lab File: BG026539.D  
 Acq: 3 Apr 2017 17:42

Tgt Ion	Resp	Lower	Upper
225	100		
223	62.2	51.4	77.2
227	65.7	50.7	76.1

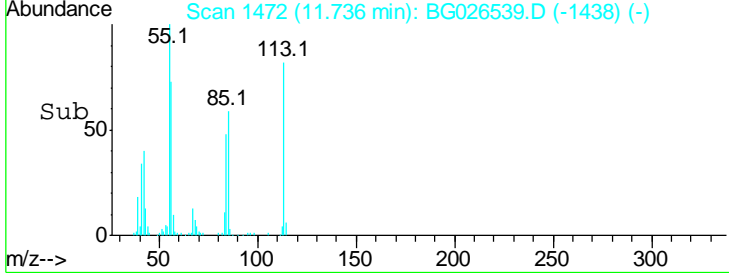
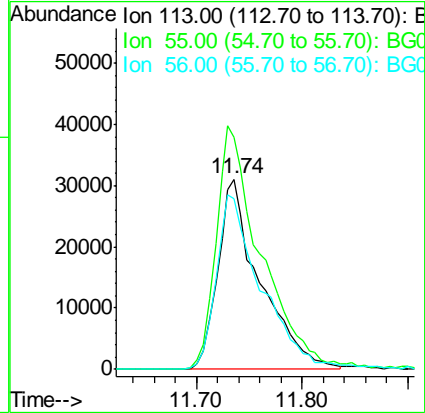
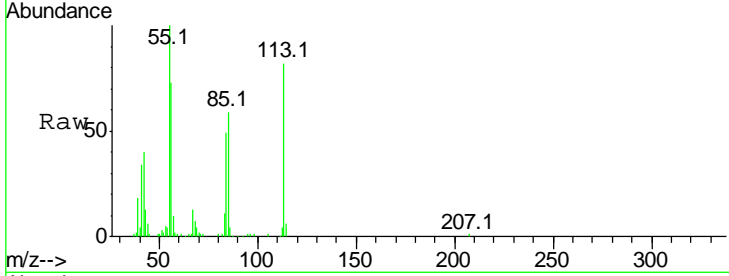




#32  
 Caprolactam  
 Concen: 18.91 ng/ul  
 RT: 11.74 min Scan# 1472  
 Delta R.T. 0.00 min  
 Lab File: BG026539.D  
 Acq: 3 Apr 2017 17:42

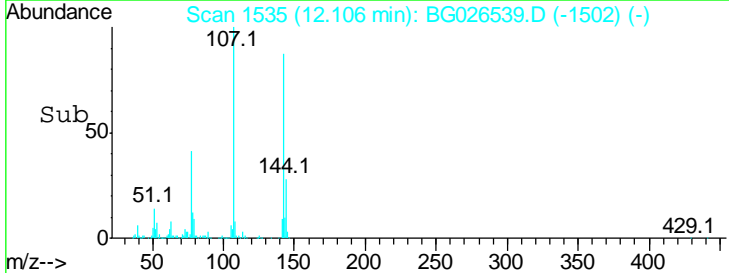
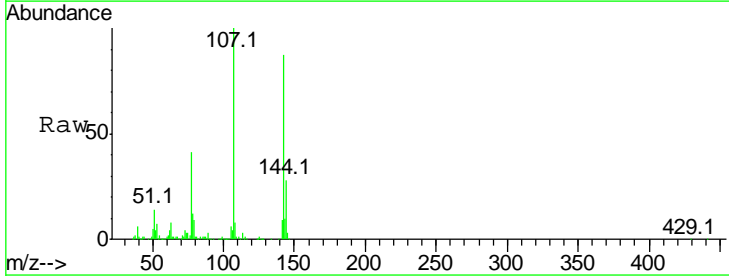
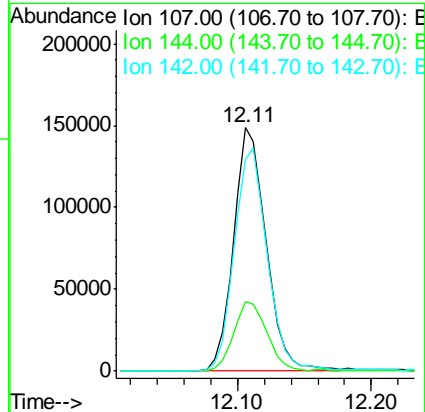
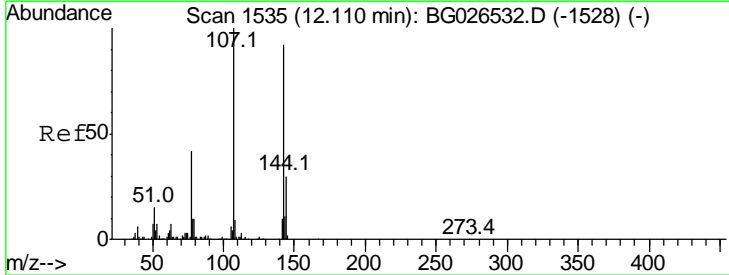
Instrument :  
 BNA\_G  
 ClientSampled :  
 SSTD02024

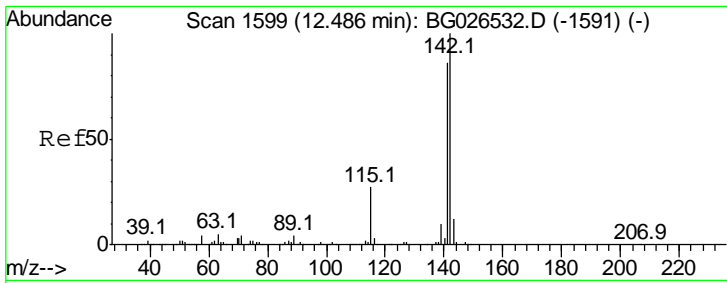
Tgt Ion	Resp	Lower	Upper
113	100		
55	121.9	101.9	152.9
56	89.5	81.2	121.8



#33  
 4-Chloro-3-methylphenol  
 Concen: 20.27 ng/ul  
 RT: 12.11 min Scan# 1535  
 Delta R.T. -0.00 min  
 Lab File: BG026539.D  
 Acq: 3 Apr 2017 17:42

Tgt Ion	Resp	Lower	Upper
107	100		
144	28.4	20.4	30.6
142	87.0	62.5	93.7

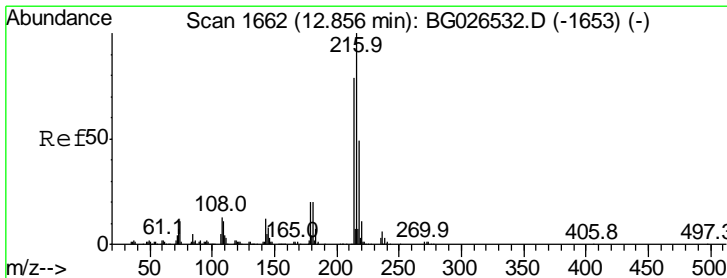
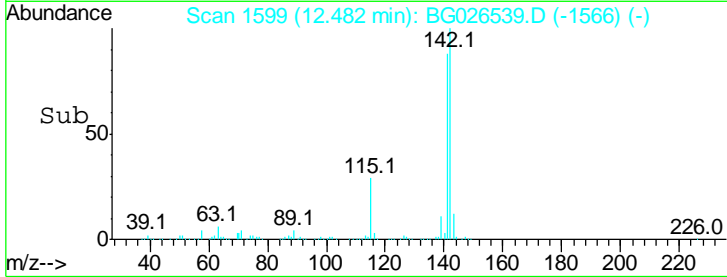
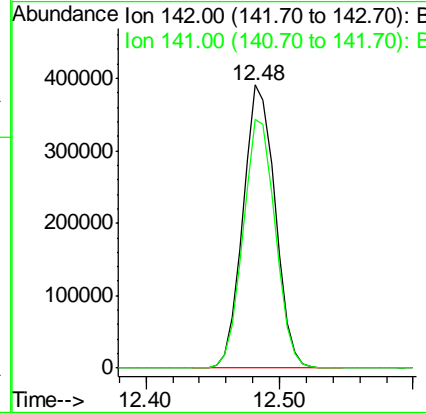
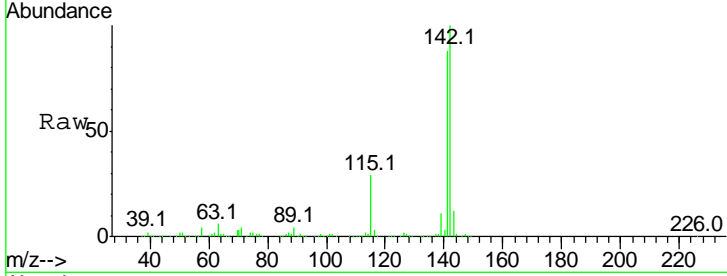




#34  
 2-Methylnaphthalene  
 Concen: 20.63 ng/ul  
 RT: 12.48 min Scan# 1599  
 Delta R.T. -0.00 min  
 Lab File: BG026539.D  
 Acq: 3 Apr 2017 17:42

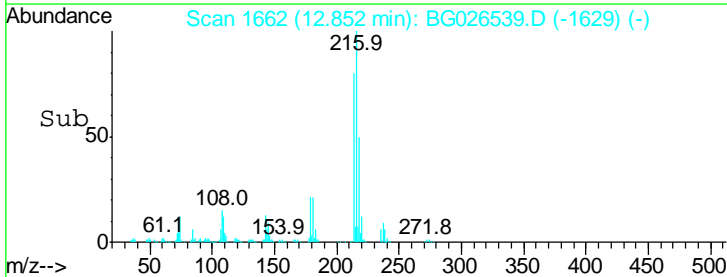
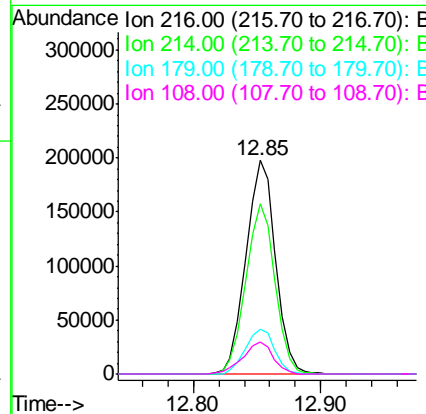
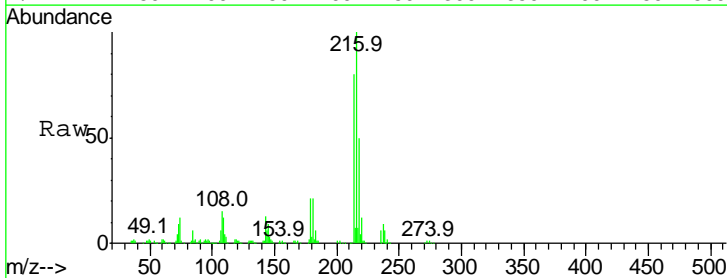
Instrument :  
 BNA\_G  
 ClientSampled :  
 SST02024

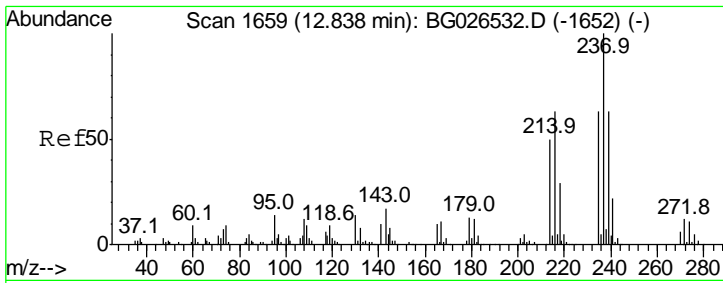
Tgt Ion	Resp	Lower	Upper
142	100		
141	87.9	71.6	107.4



#36  
 1,2,4,5-Tetrachlorobenzene  
 Concen: 21.00 ng/ul  
 RT: 12.85 min Scan# 1662  
 Delta R.T. -0.00 min  
 Lab File: BG026539.D  
 Acq: 3 Apr 2017 17:42

Tgt Ion	Resp	Lower	Upper
216	100		
214	79.9	62.5	93.7
179	21.2	18.2	27.2
108	15.1	14.2	21.2

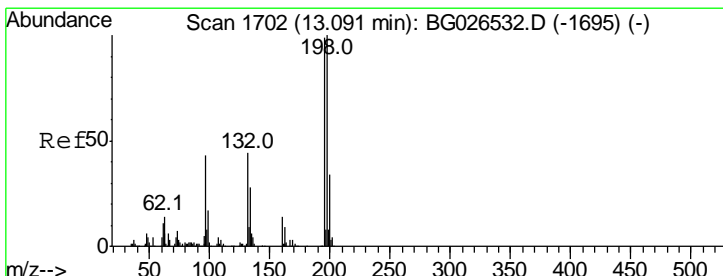
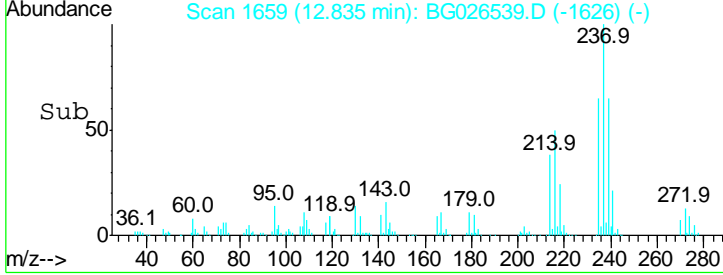
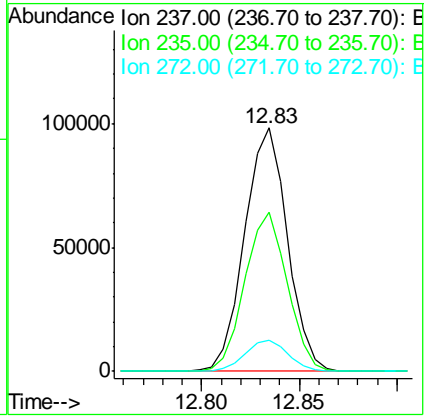
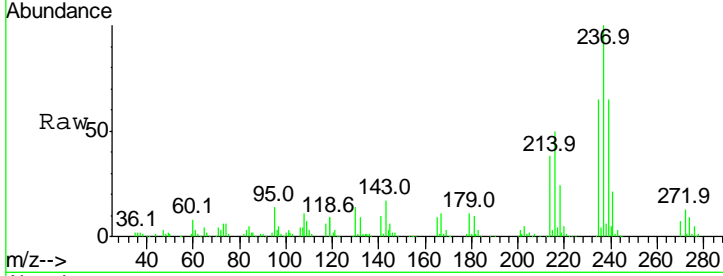




#37  
 Hexachlorocyclopentadiene  
 Concen: 19.55 ng/ul  
 RT: 12.83 min Scan# 1659  
 Delta R.T. -0.00 min  
 Lab File: BG026539.D  
 Acq: 3 Apr 2017 17:42

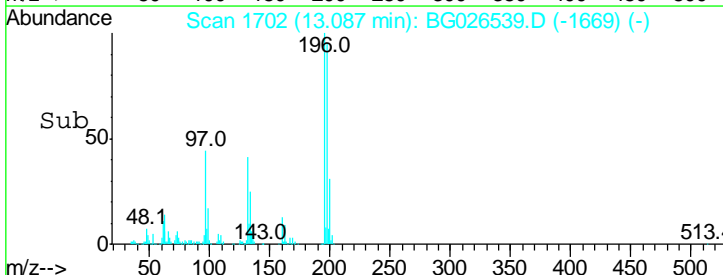
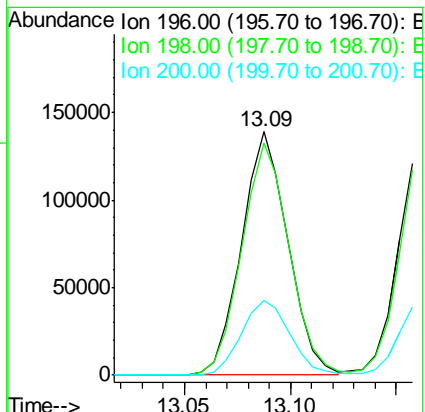
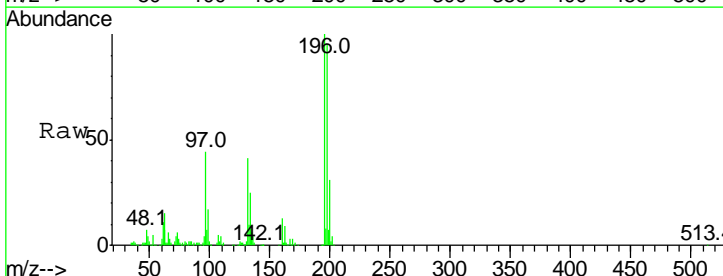
Instrument :  
 BNA\_G  
 ClientSampled :  
 SSTD02024

Tgt Ion	Resp	Lower	Upper
237	149153		
237	100		
235	65.4	50.4	75.6
272	13.0	9.6	14.4

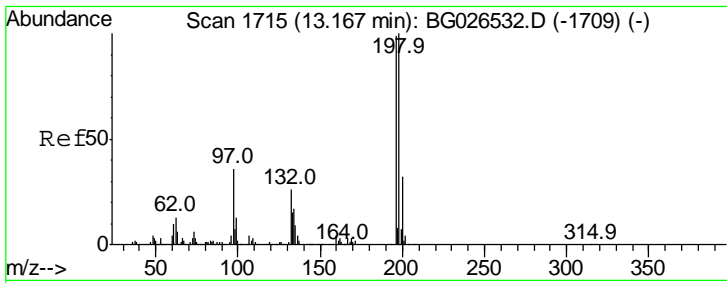


#38  
 2,4,6-Trichlorophenol  
 Concen: 20.92 ng/ul  
 RT: 13.09 min Scan# 1702  
 Delta R.T. -0.00 min  
 Lab File: BG026539.D  
 Acq: 3 Apr 2017 17:42

Tgt Ion	Resp	Lower	Upper
196	211946		
196	100		
198	95.1	76.6	114.8
200	30.7	24.7	37.1



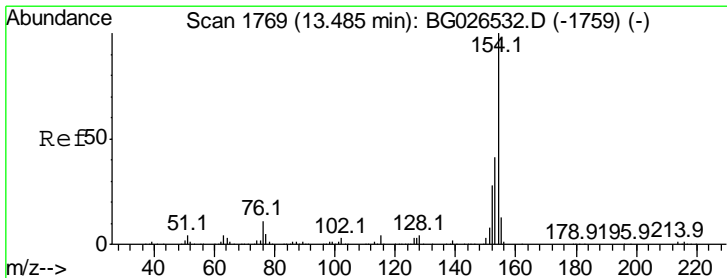
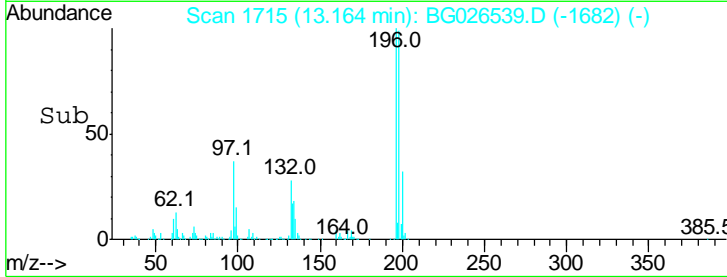
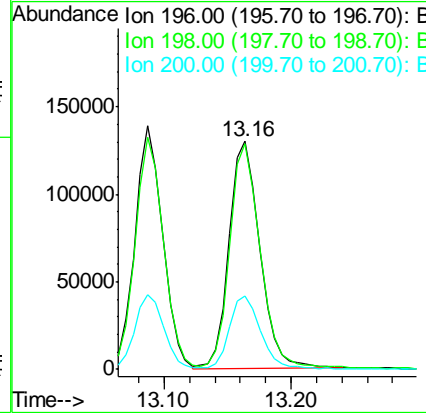
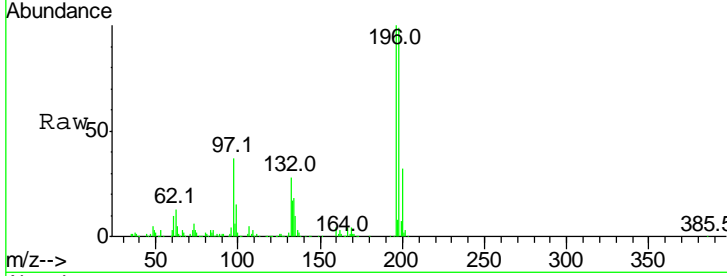




#39  
 2,4,5-Trichlorophenol  
 Concen: 20.89 ng/ul  
 RT: 13.16 min Scan# 1715  
 Delta R.T. -0.00 min  
 Lab File: BG026539.D  
 Acq: 3 Apr 2017 17:42

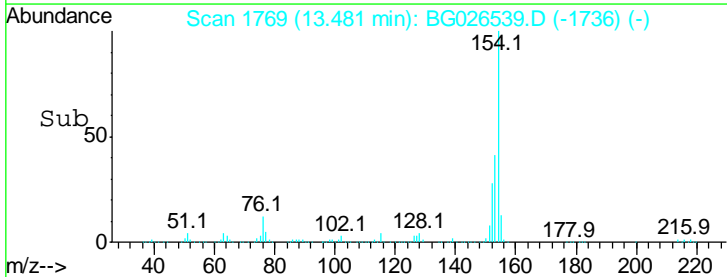
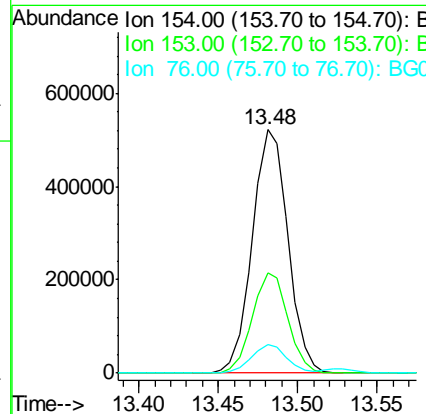
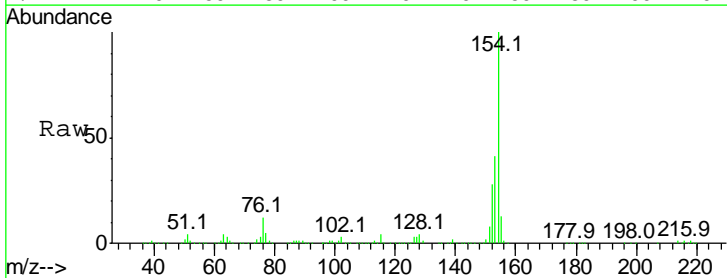
Instrument :  
 BNA\_G  
 ClientSampled :  
 SSTD02024

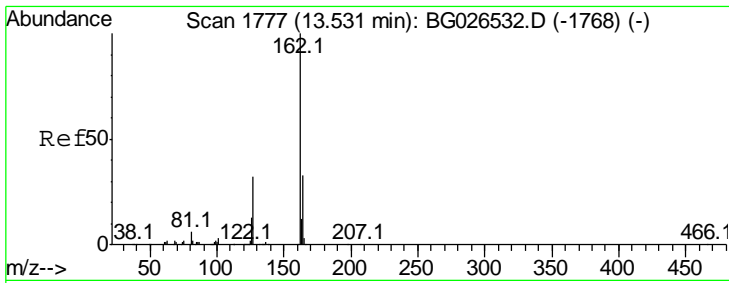
Tgt Ion	Resp	Lower	Upper
196	100		
198	99.1	76.9	115.3
200	32.2	25.0	37.4



#40  
 1,1'-Biphenyl  
 Concen: 21.00 ng/ul  
 RT: 13.48 min Scan# 1769  
 Delta R.T. -0.00 min  
 Lab File: BG026539.D  
 Acq: 3 Apr 2017 17:42

Tgt Ion	Resp	Lower	Upper
154	100		
153	41.4	32.1	48.1
76	11.8	9.5	14.3

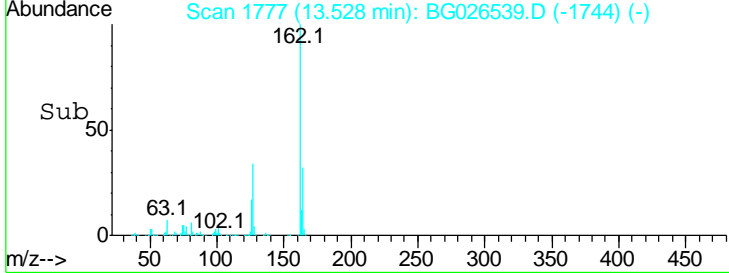
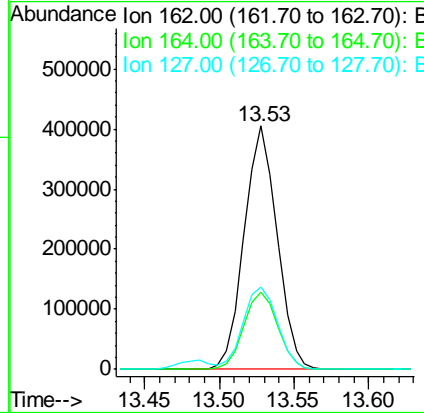
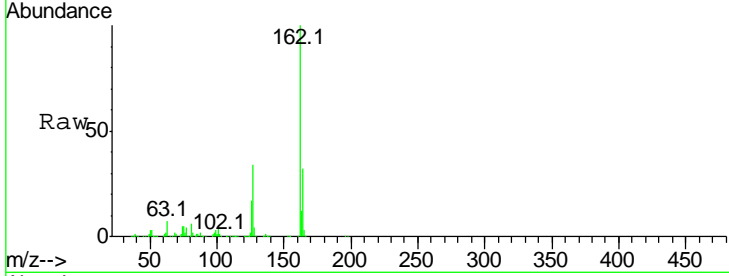




#41  
 2-Chloronaphthalene  
 Concen: 21.04 ng/ul  
 RT: 13.53 min Scan# 1777  
 Delta R.T. -0.00 min  
 Lab File: BG026539.D  
 Acq: 3 Apr 2017 17:42

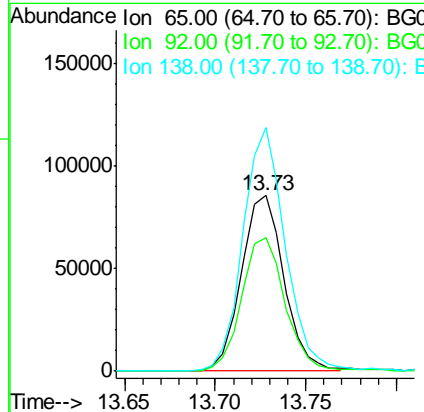
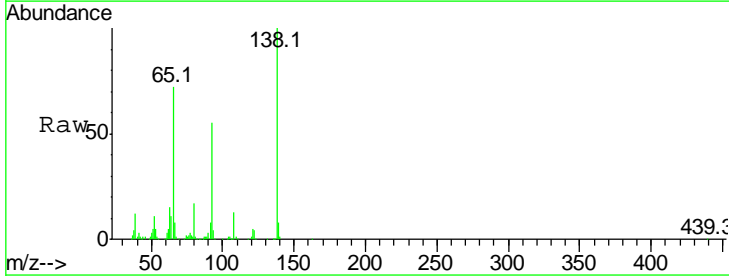
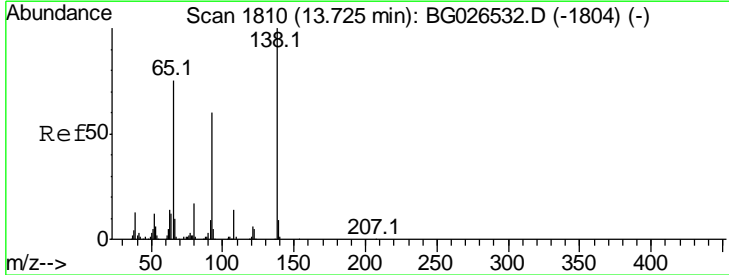
Instrument :  
 BNA\_G  
 ClientSampled :  
 SSTD02024

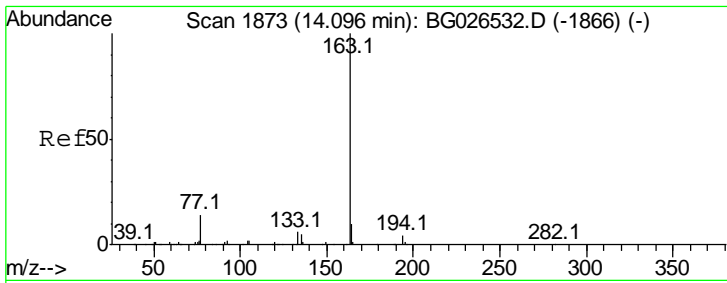
Tgt Ion	Resp	Lower	Upper
162	100		
164	32.0	25.9	38.9
127	33.6	34.1	51.1#



#42  
 2-Nitroaniline  
 Concen: 20.52 ng/ul  
 RT: 13.73 min Scan# 1811  
 Delta R.T. 0.00 min  
 Lab File: BG026539.D  
 Acq: 3 Apr 2017 17:42

Tgt Ion	Resp	Lower	Upper
65	100		
92	75.9	60.4	90.6
138	138.7	99.8	149.6

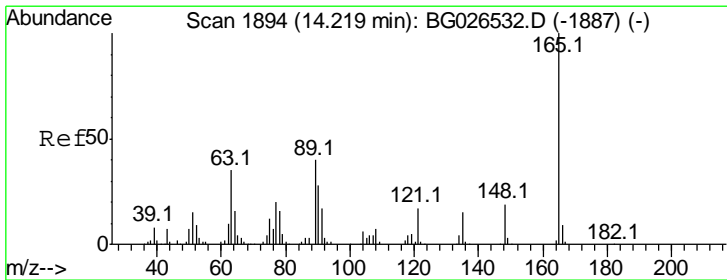
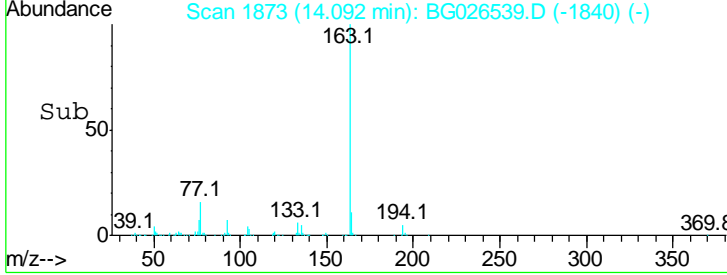
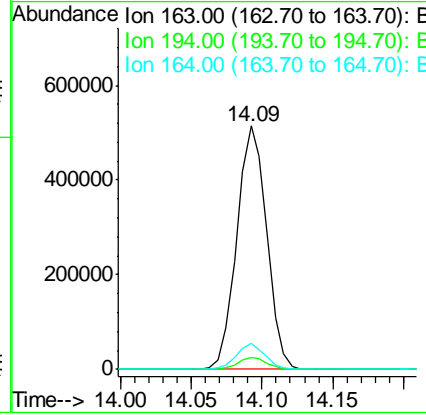
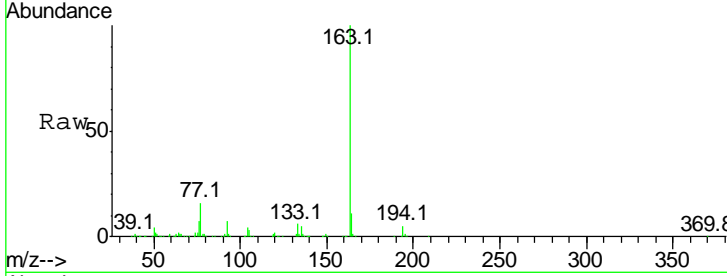




#44  
 Dimethylphthalate  
 Concen: 20.77 ng/ul  
 RT: 14.09 min Scan# 1873  
 Delta R.T. -0.00 min  
 Lab File: BG026539.D  
 Acq: 3 Apr 2017 17:42

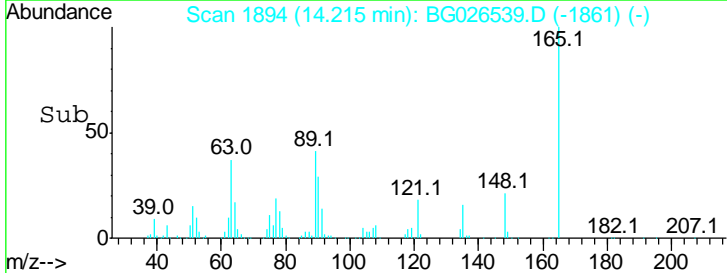
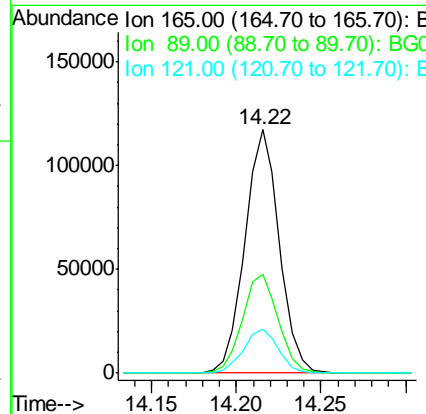
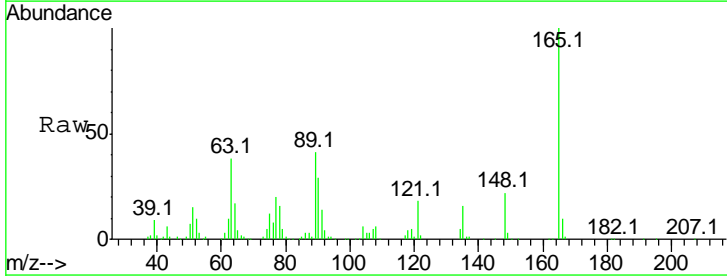
Instrument :  
 BNA\_G  
 ClientSampled :  
 SSTD02024

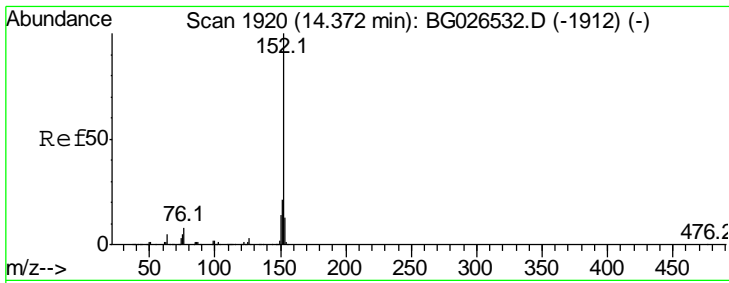
Tgt Ion	Resp	Lower	Upper
163	100		
194	4.8	3.2	4.8#
164	10.6	7.8	11.8



#45  
 2,6-Dinitrotoluene  
 Concen: 21.13 ng/ul  
 RT: 14.22 min Scan# 1894  
 Delta R.T. -0.00 min  
 Lab File: BG026539.D  
 Acq: 3 Apr 2017 17:42

Tgt Ion	Resp	Lower	Upper
165	100		
89	40.8	42.4	63.6#
121	18.1	16.6	24.8

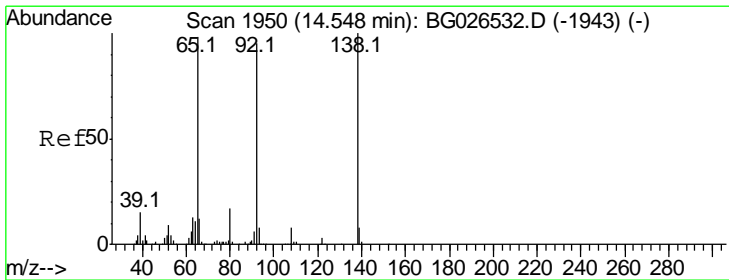
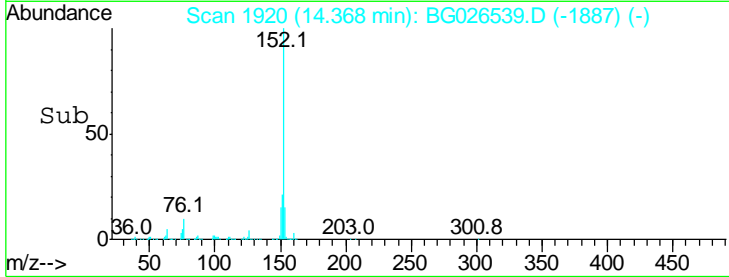
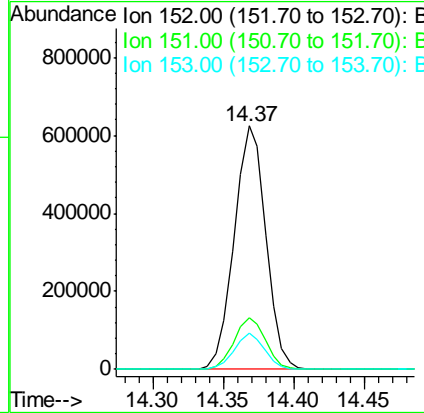
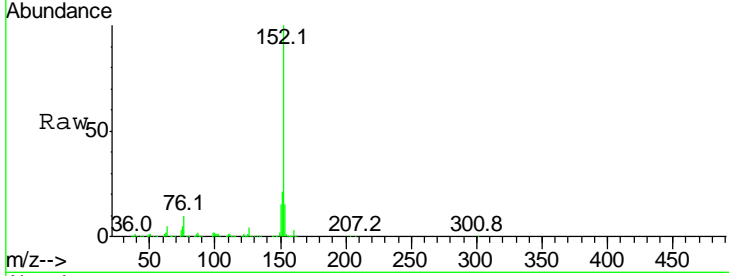




#47  
 Acenaphthylene  
 Concen: 20.90 ng/ul  
 RT: 14.37 min Scan# 1920  
 Delta R.T. -0.00 min  
 Lab File: BG026539.D  
 Acq: 3 Apr 2017 17:42

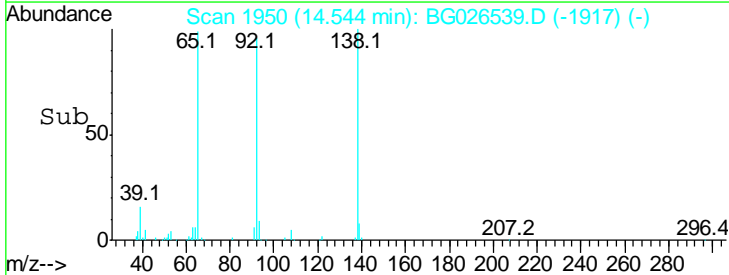
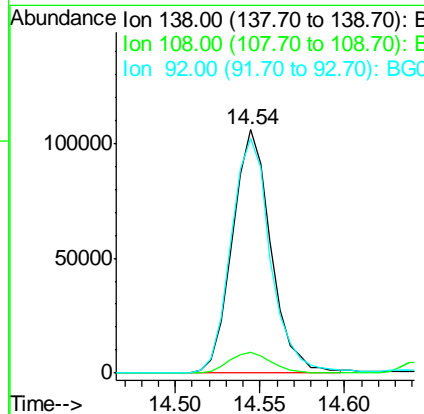
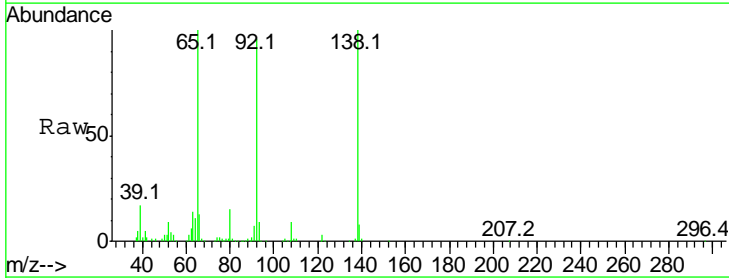
Instrument :  
 BNA\_G  
 ClientSampled :  
 SSTD02024

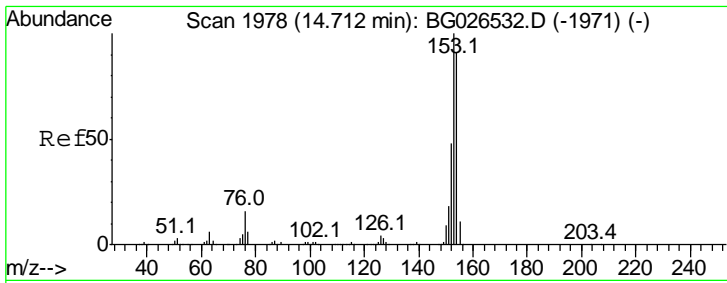
Tgt Ion	Resp	Lower	Upper
152	100		
151	21.3	15.7	23.5
153	14.7	10.5	15.7



#48  
 3-Nitroaniline  
 Concen: 23.16 ng/ul  
 RT: 14.54 min Scan# 1950  
 Delta R.T. -0.00 min  
 Lab File: BG026539.D  
 Acq: 3 Apr 2017 17:42

Tgt Ion	Resp	Lower	Upper
138	100		
108	8.7	8.7	13.1#
92	96.4	88.2	132.4

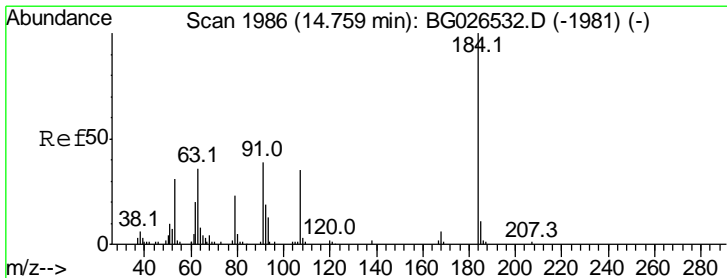
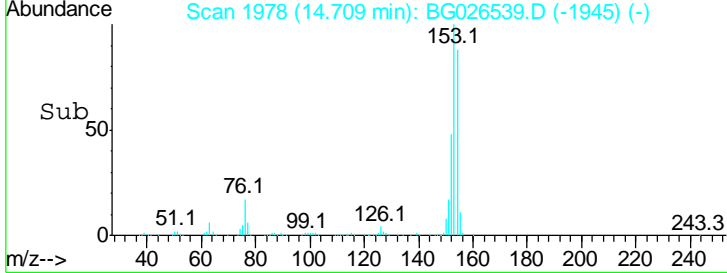
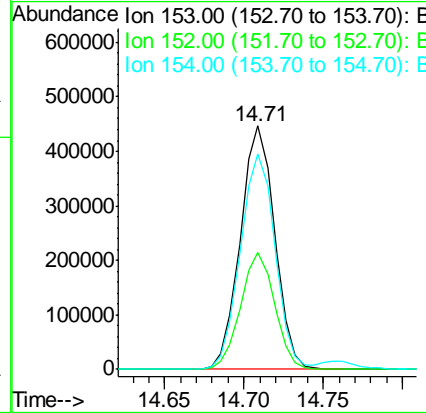
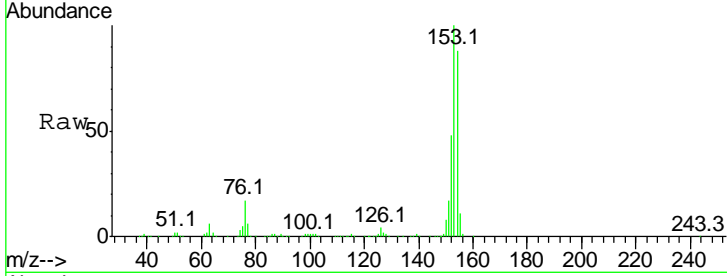




#49  
 Acenaphthene  
 Concen: 20.76 ng/ul  
 RT: 14.71 min Scan# 1978  
 Delta R.T. -0.00 min  
 Lab File: BG026539.D  
 Acq: 3 Apr 2017 17:42

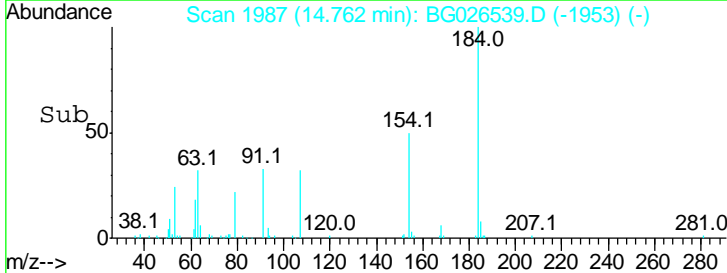
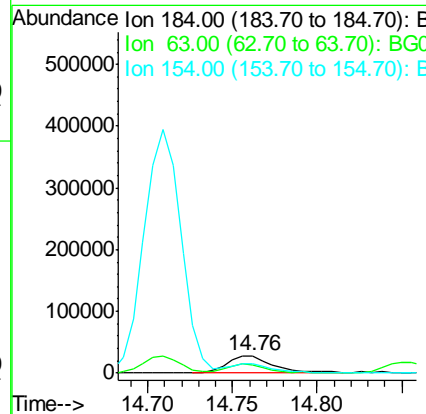
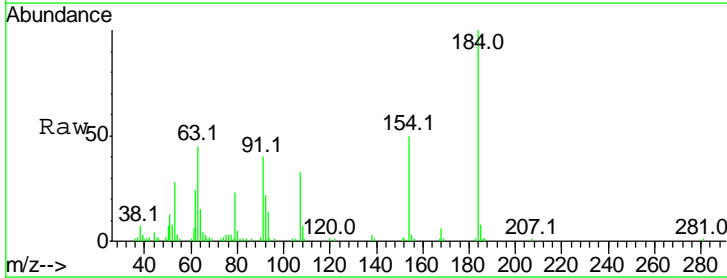
Instrument :  
 BNA\_G  
 ClientSampled :  
 SST02024

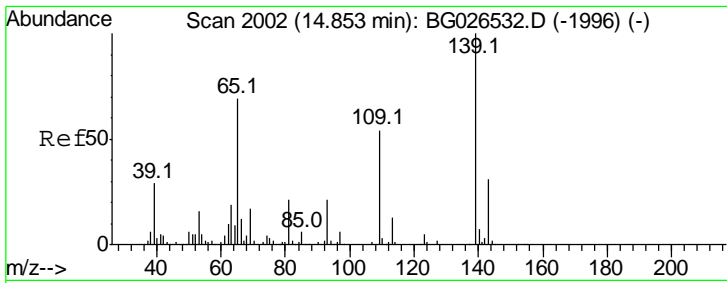
Tgt Ion	Resp	Lower	Upper
153	671301		
152	48.0	38.3	57.5
154	88.3	71.8	107.8



#50  
 2,4-Dinitrophenol  
 Concen: 12.31 ng/ul  
 RT: 14.76 min Scan# 1987  
 Delta R.T. 0.00 min  
 Lab File: BG026539.D  
 Acq: 3 Apr 2017 17:42

Tgt Ion	Resp	Lower	Upper
184	54479		
63	45.0	46.5	69.7#
154	49.6	54.6	82.0#

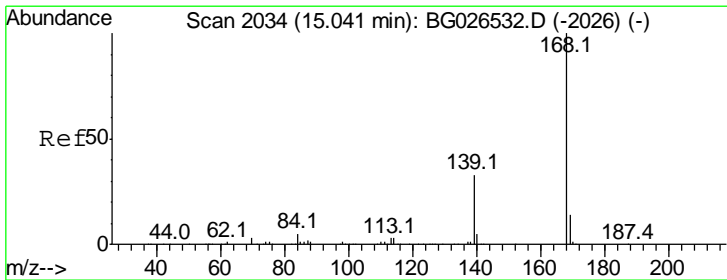
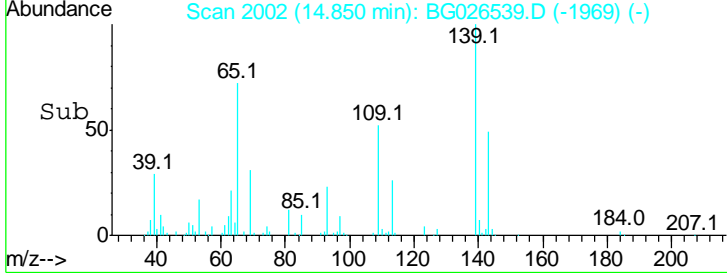
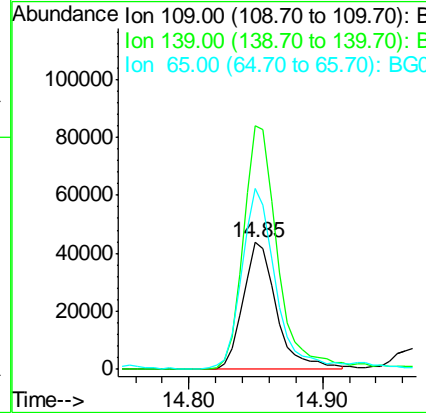
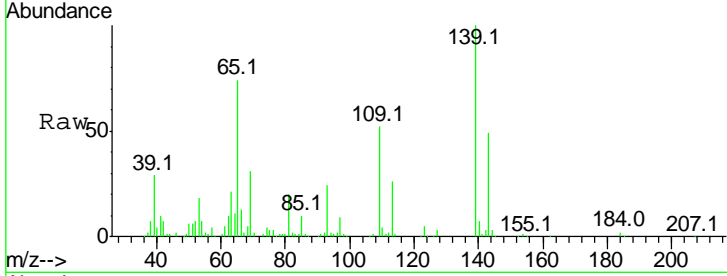




#52  
 4-Nitrophenol  
 Concen: 19.52 ng/ul  
 RT: 14.85 min Scan# 2002  
 Delta R.T. -0.00 min  
 Lab File: BG026539.D  
 Acq: 3 Apr 2017 17:42

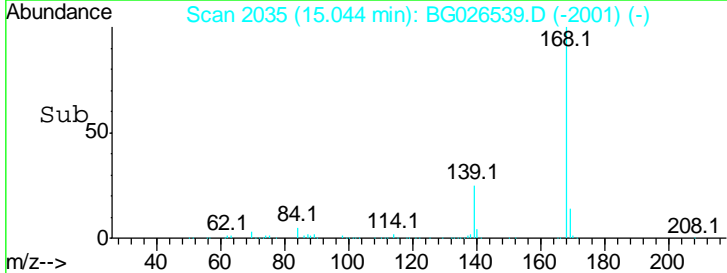
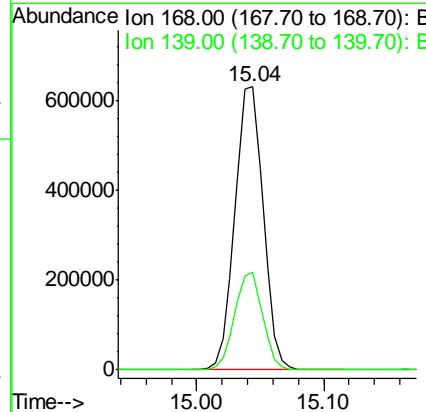
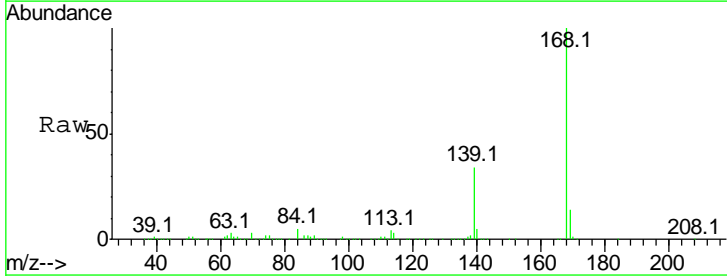
Instrument :  
 BNA\_G  
 ClientSampled :  
 SSTD02024

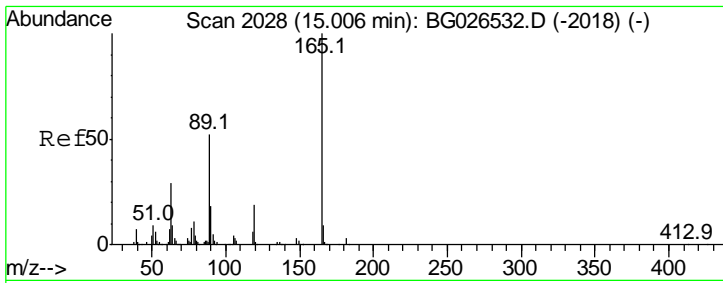
Tgt Ion	Resp	Lower	Upper
109	100		
139	191.7	103.7	155.5#
65	142.0	89.4	134.2#



#53  
 Dibenzofuran  
 Concen: 21.10 ng/ul  
 RT: 15.04 min Scan# 2035  
 Delta R.T. 0.00 min  
 Lab File: BG026539.D  
 Acq: 3 Apr 2017 17:42

Tgt Ion	Resp	Lower	Upper
168	100		
139	34.4	32.2	48.2

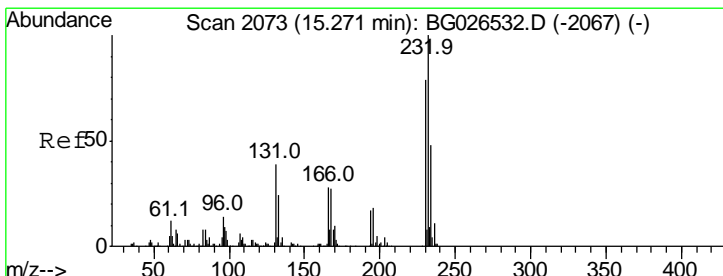
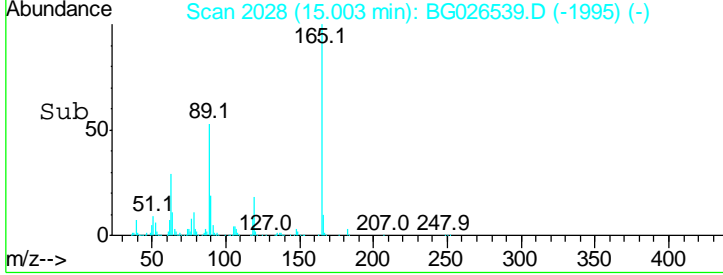
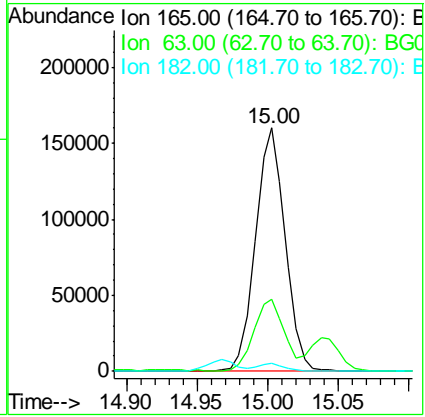
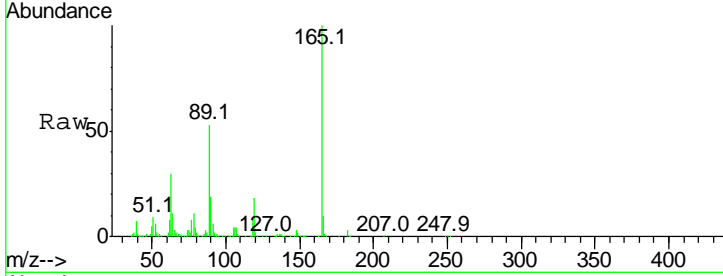




#54  
 2,4-Dinitrotoluene  
 Concen: 20.86 ng/ul  
 RT: 15.00 min Scan# 2028  
 Delta R.T. -0.00 min  
 Lab File: BG026539.D  
 Acq: 3 Apr 2017 17:42

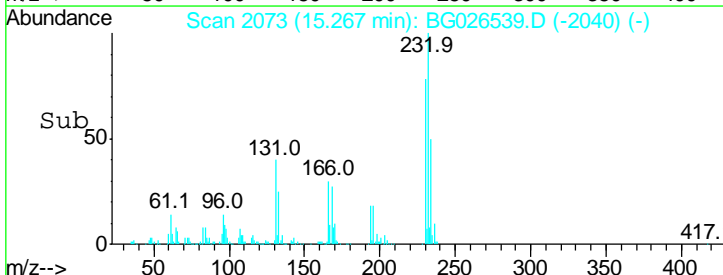
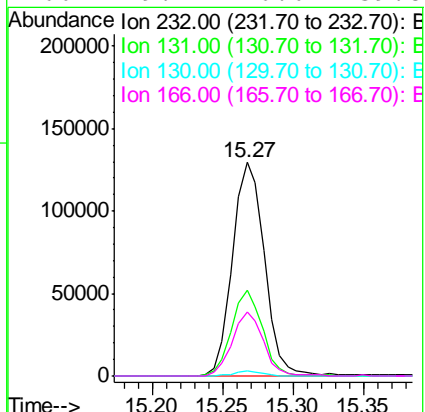
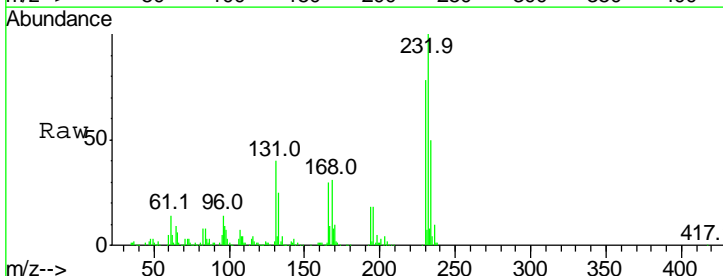
Instrument :  
 BNA\_G  
 ClientSampled :  
 SST02024

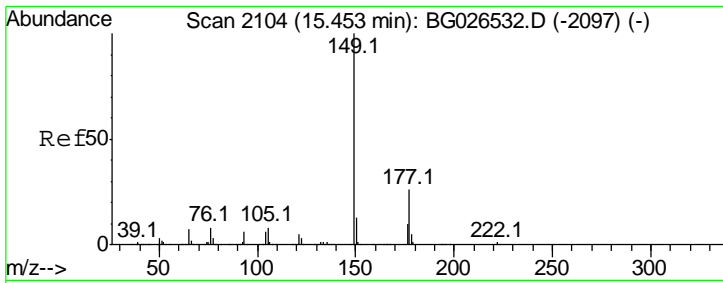
Tgt Ion	Resp	Lower	Upper
165	100		
63	29.6	29.8	44.6#
182	3.1	2.2	3.4



#55  
 2,3,4,6-Tetrachlorophenol  
 Concen: 20.41 ng/ul  
 RT: 15.27 min Scan# 2073  
 Delta R.T. -0.00 min  
 Lab File: BG026539.D  
 Acq: 3 Apr 2017 17:42

Tgt Ion	Resp	Lower	Upper
232	100		
131	40.1	39.4	59.2
130	2.4	2.2	3.2
166	29.7	26.6	39.8

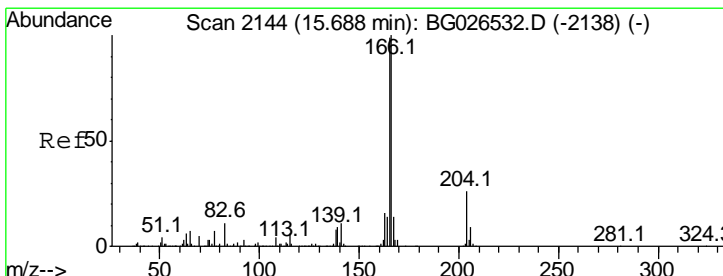
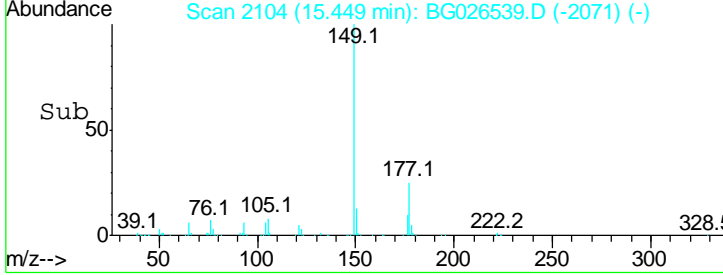
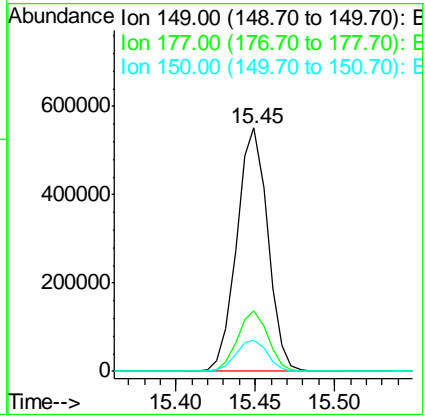
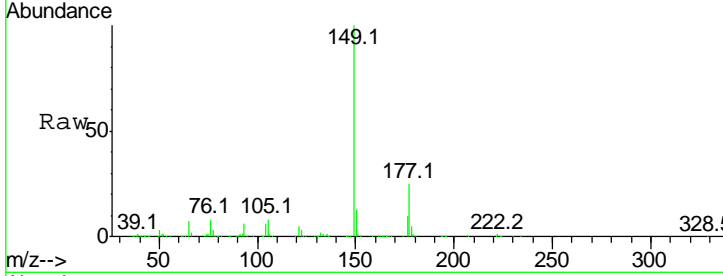




#56  
 Diethylphthalate  
 Concen: 20.61 ng/ul  
 RT: 15.45 min Scan# 2104  
 Delta R.T. -0.00 min  
 Lab File: BG026539.D  
 Acq: 3 Apr 2017 17:42

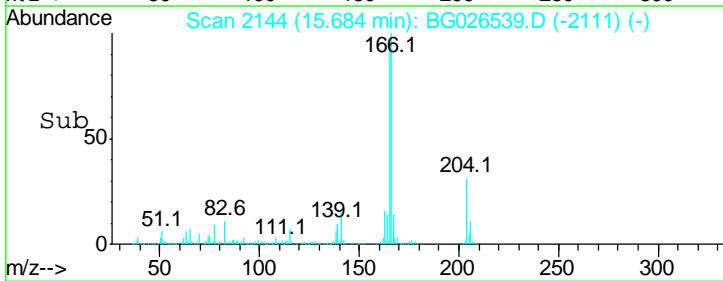
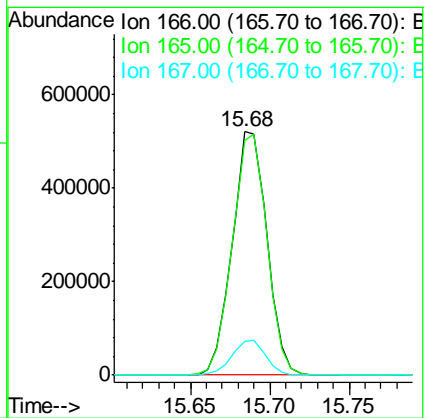
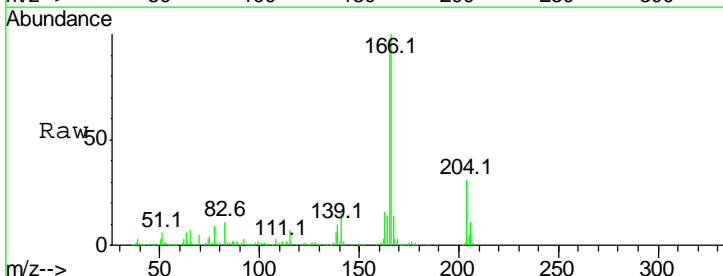
Instrument :  
 BNA\_G  
 ClientSampled :  
 SSTD02024

Tgt Ion	Resp	Lower	Upper
149	100		
177	25.1	17.4	26.2
150	12.6	10.0	15.0

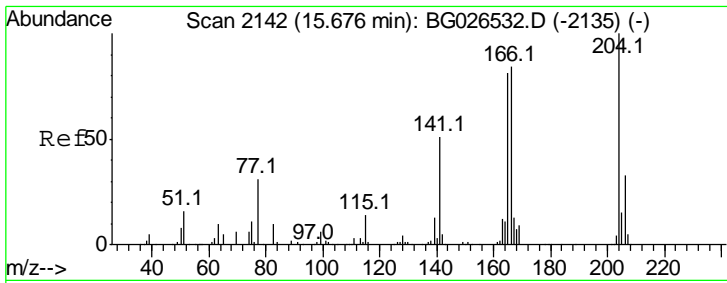


#58  
 Fluorene  
 Concen: 20.62 ng/ul  
 RT: 15.68 min Scan# 2144  
 Delta R.T. -0.00 min  
 Lab File: BG026539.D  
 Acq: 3 Apr 2017 17:42

Tgt Ion	Resp	Lower	Upper
166	100		
165	96.2	78.5	117.7
167	13.7	10.7	16.1



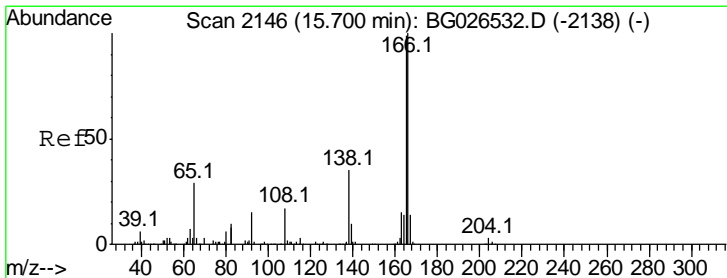
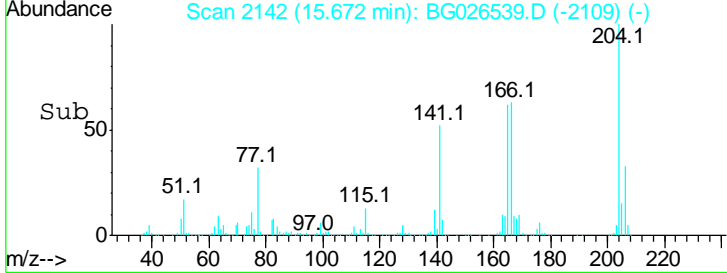
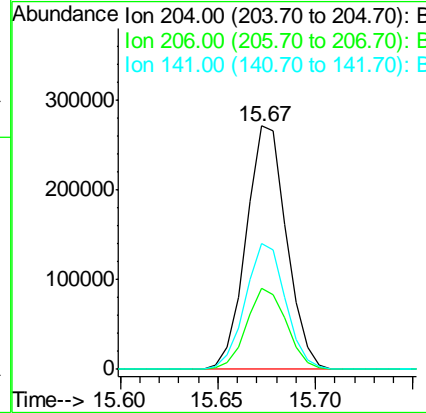
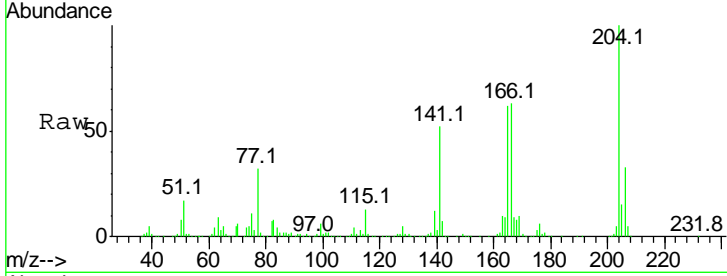




#59  
 4-Chlorophenyl-phenylether  
 Concen: 20.67 ng/ul  
 RT: 15.67 min Scan# 2142  
 Delta R.T. -0.00 min  
 Lab File: BG026539.D  
 Acq: 3 Apr 2017 17:42

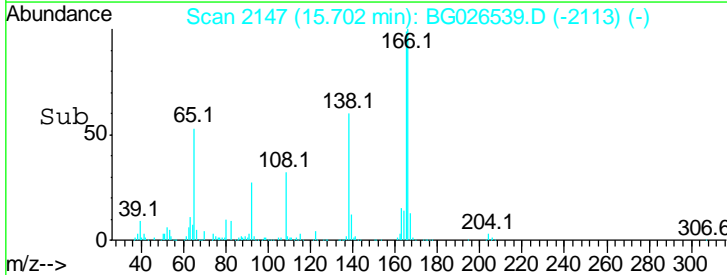
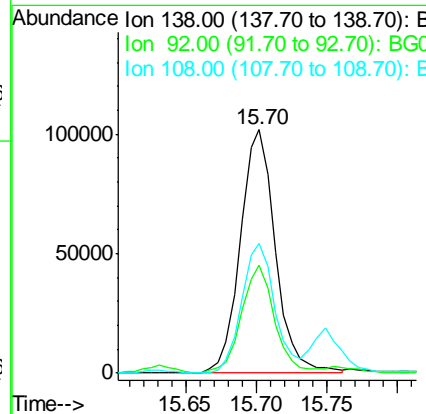
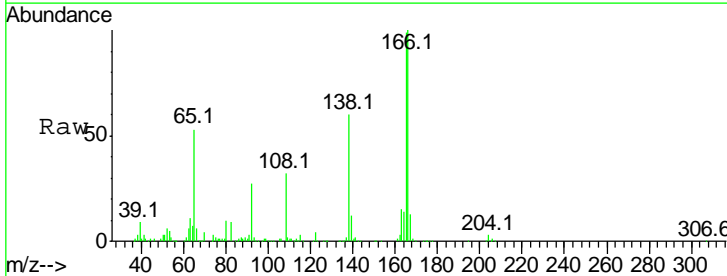
Instrument :  
 BNA\_G  
 ClientSampleID :  
 SSTD02024

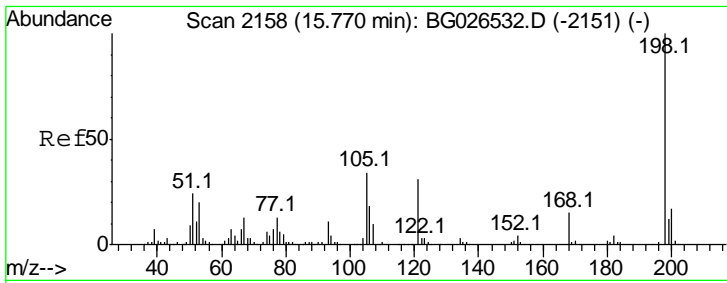
Tgt Ion	Resp	Lower	Upper
204	100		
206	33.2	26.2	39.4
141	51.6	54.6	81.8#



#60  
 4-Nitroaniline  
 Concen: 19.56 ng/ul  
 RT: 15.70 min Scan# 2147  
 Delta R.T. 0.00 min  
 Lab File: BG026539.D  
 Acq: 3 Apr 2017 17:42

Tgt Ion	Resp	Lower	Upper
138	100		
92	44.4	40.6	60.8
108	53.2	67.0	100.6#

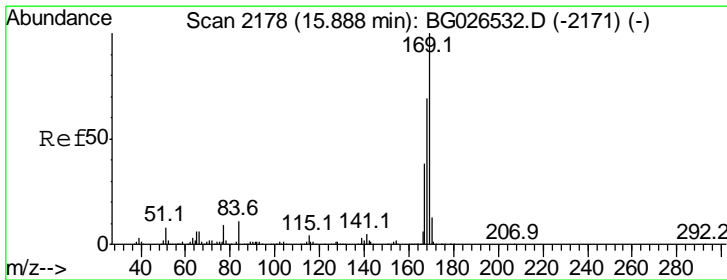
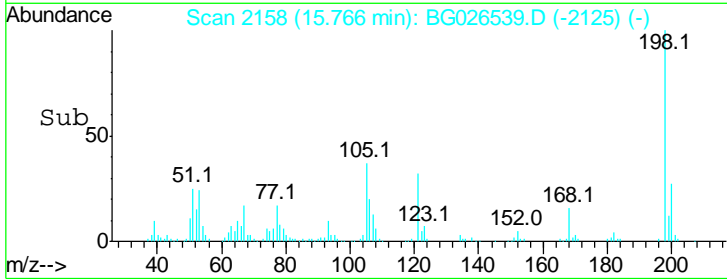
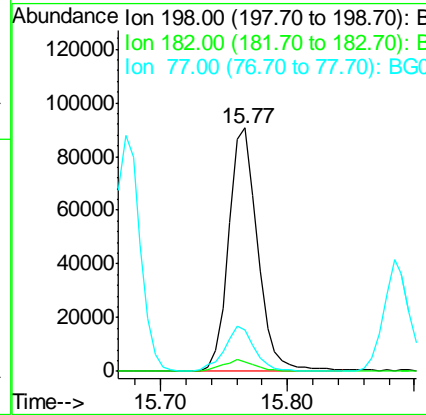
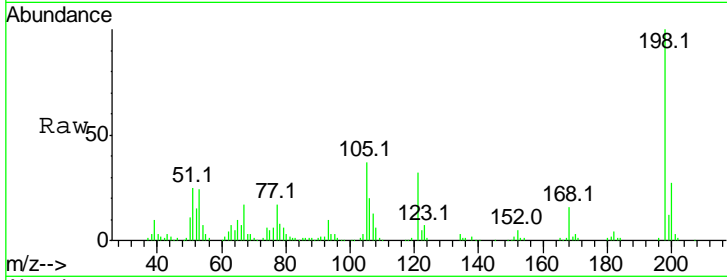




#63  
 4,6-Dinitro-2-methylphenol  
 Concen: 18.96 ng/ul  
 RT: 15.77 min Scan# 2158  
 Delta R.T. -0.00 min  
 Lab File: BG026539.D  
 Acq: 3 Apr 2017 17:42

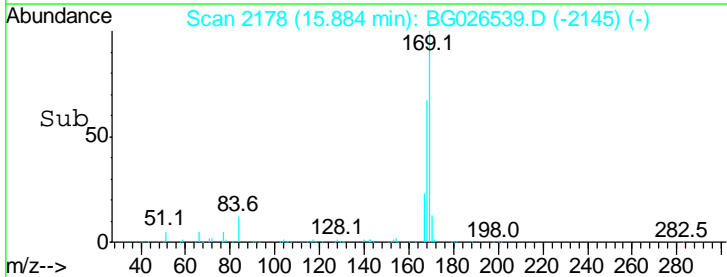
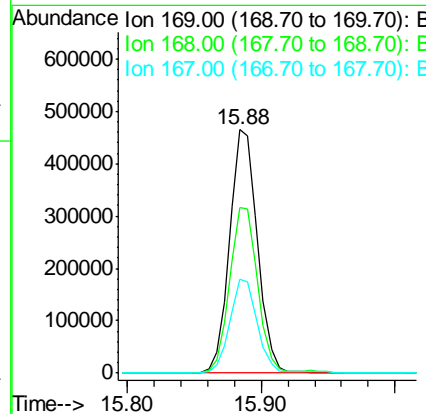
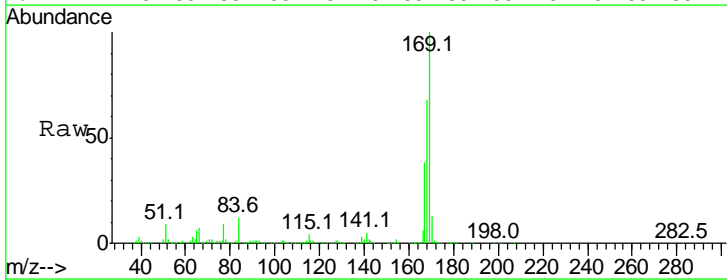
Instrument :  
 BNA\_G  
 ClientSampleId :  
 SSTD02024

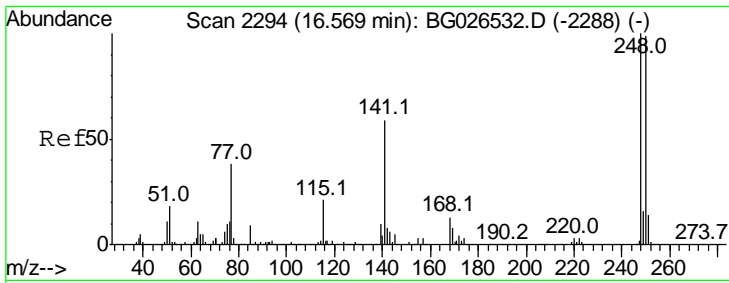
Tgt Ion	Resp	Lower	Upper
198	100		
182	3.9	3.1	4.7
77	17.0	20.1	30.1#



#64  
 N-Nitrosodiphenylamine  
 Concen: 21.30 ng/ul  
 RT: 15.88 min Scan# 2178  
 Delta R.T. -0.00 min  
 Lab File: BG026539.D  
 Acq: 3 Apr 2017 17:42

Tgt Ion	Resp	Lower	Upper
169	100		
168	68.0	53.8	80.8
167	38.3	29.3	43.9

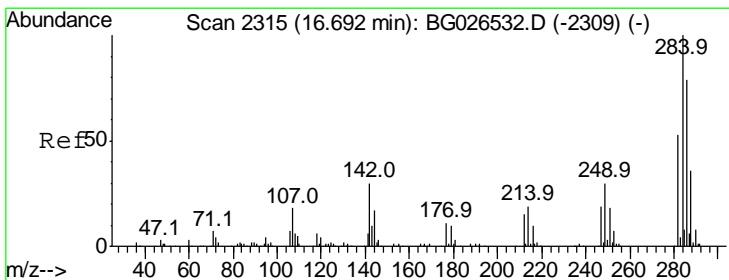
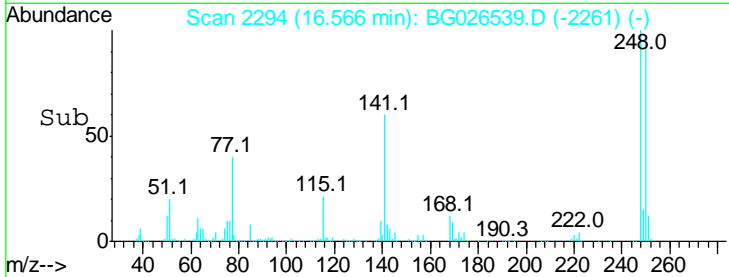
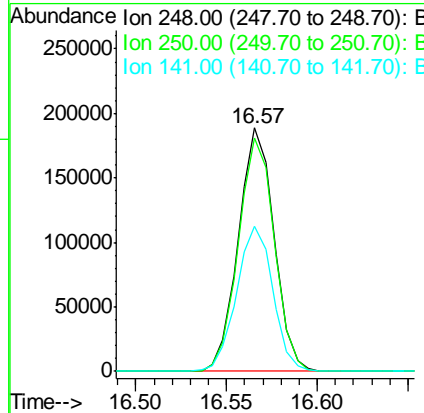
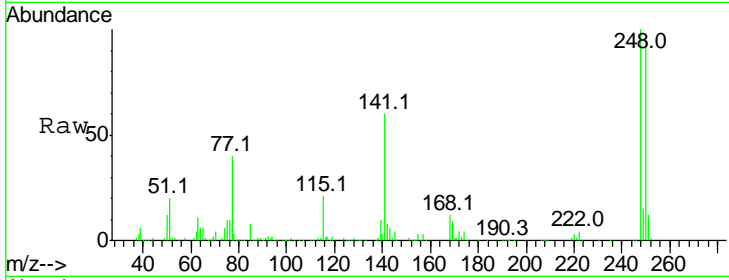




#65  
 4-Bromophenyl-phenylether  
 Concen: 21.02 ng/ul  
 RT: 16.57 min Scan# 2294  
 Delta R.T. -0.00 min  
 Lab File: BG026539.D  
 Acq: 3 Apr 2017 17:42

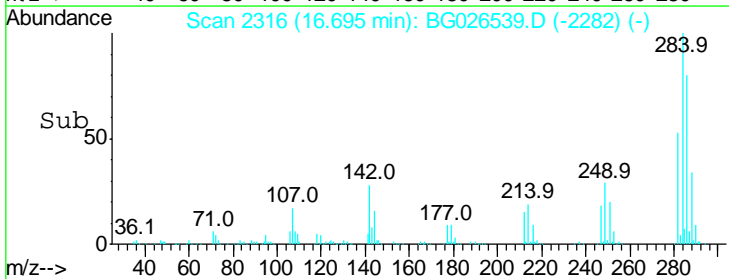
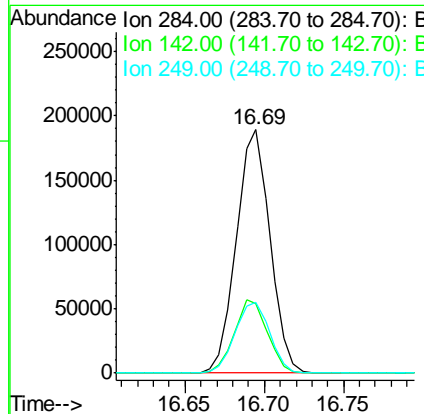
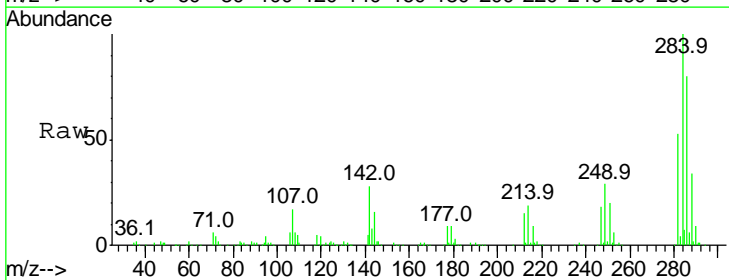
Instrument :  
 BNA\_G  
 ClientSampleID :  
 SSTD02024

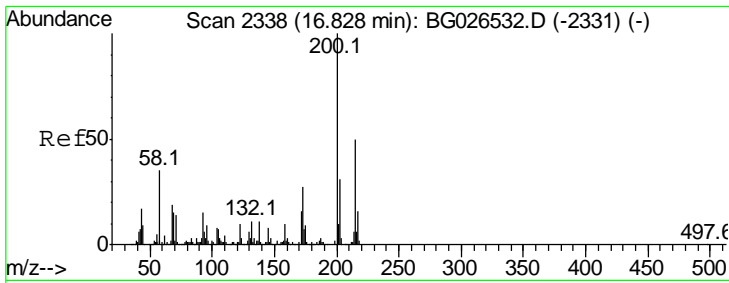
Tgt Ion	Resp	Lower	Upper
248	100		
250	96.1	78.7	118.1
141	59.7	72.2	108.2#



#66  
 Hexachlorobenzene  
 Concen: 21.07 ng/ul  
 RT: 16.69 min Scan# 2316  
 Delta R.T. 0.00 min  
 Lab File: BG026539.D  
 Acq: 3 Apr 2017 17:42

Tgt Ion	Resp	Lower	Upper
284	100		
142	28.5	33.1	49.7#
249	29.2	27.1	40.7

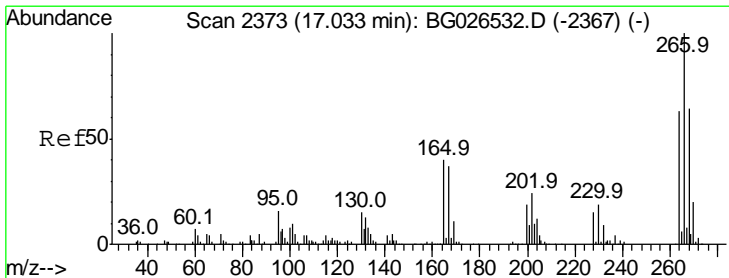
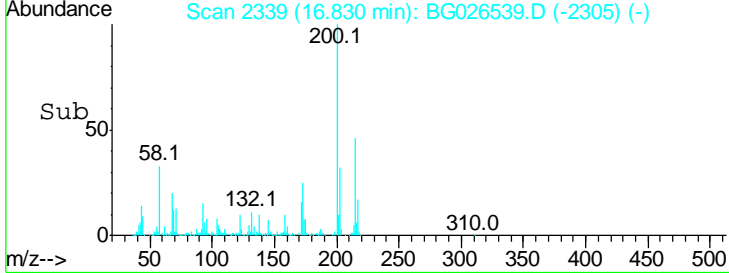
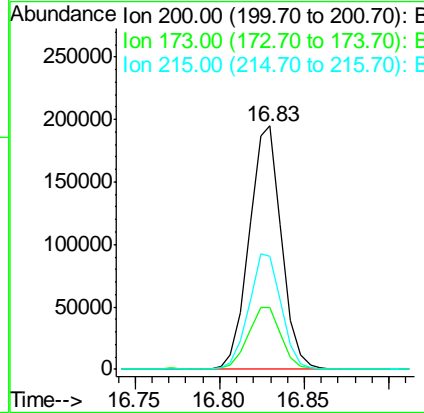
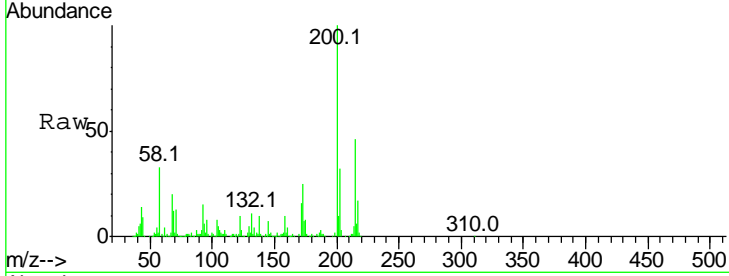




#67  
 Atrazine  
 Concen: 20.90 ng/ul  
 RT: 16.83 min Scan# 2339  
 Delta R.T. 0.00 min  
 Lab File: BG026539.D  
 Acq: 3 Apr 2017 17:42

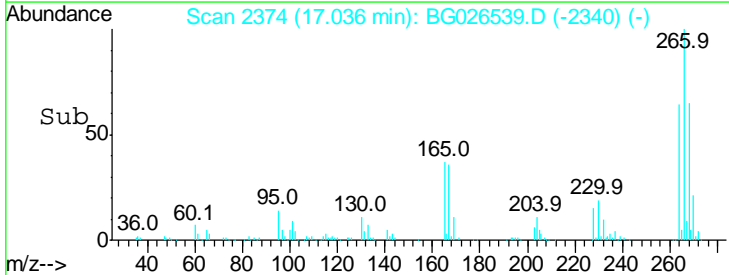
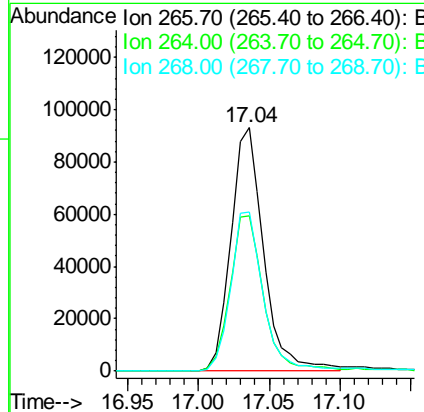
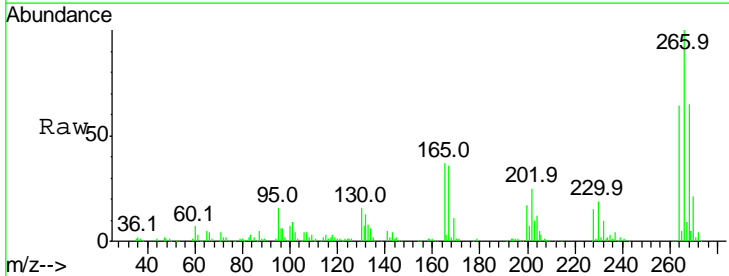
Instrument :  
 BNA\_G  
 ClientSampled :  
 SST02024

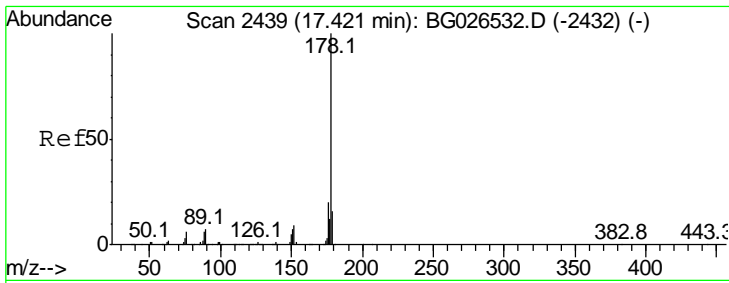
Tgt Ion	Resp	Lower	Upper
200	100		
173	25.5	21.6	32.4
215	46.4	37.0	55.4



#68  
 Pentachlorophenol  
 Concen: 19.18 ng/ul  
 RT: 17.04 min Scan# 2374  
 Delta R.T. 0.00 min  
 Lab File: BG026539.D  
 Acq: 3 Apr 2017 17:42

Tgt Ion	Resp	Lower	Upper
266	100		
264	63.8	50.5	75.7
268	65.4	50.9	76.3



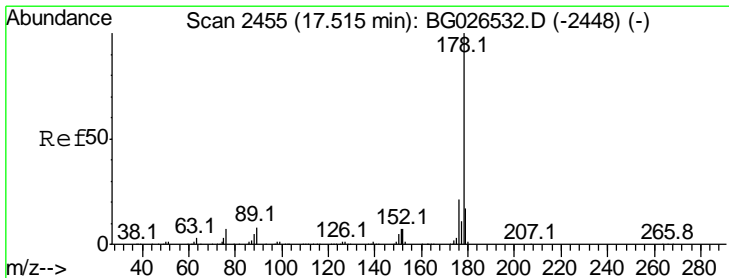
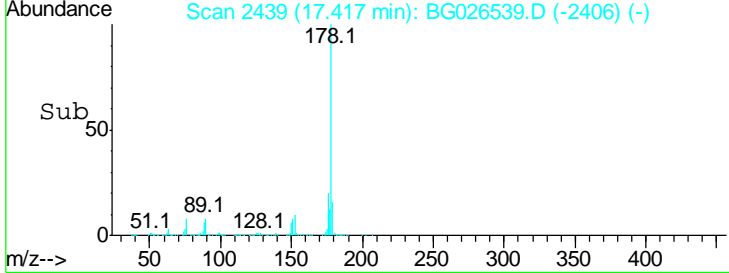
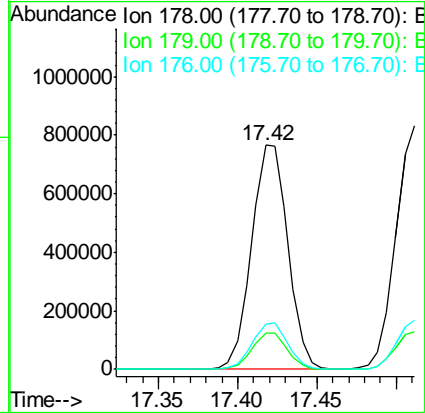
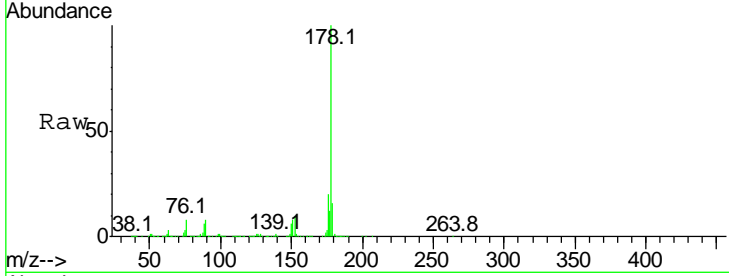


#69  
 Phenanthrene  
 Concen: 20.80 ng/ul  
 RT: 17.42 min Scan# 2439  
 Delta R.T. -0.00 min  
 Lab File: BG026539.D  
 Acq: 3 Apr 2017 17:42

Instrument :  
 BNA\_G  
 ClientSampleId :  
 SSTD02024

Tgt Ion:178 Resp: 1218876

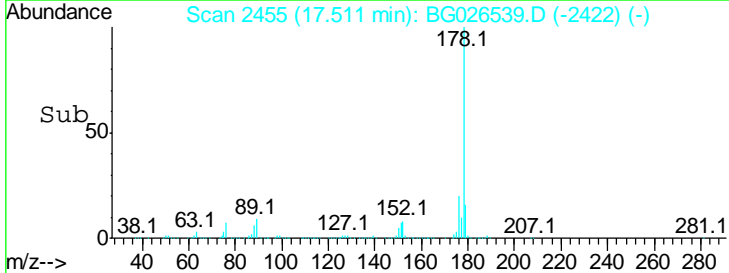
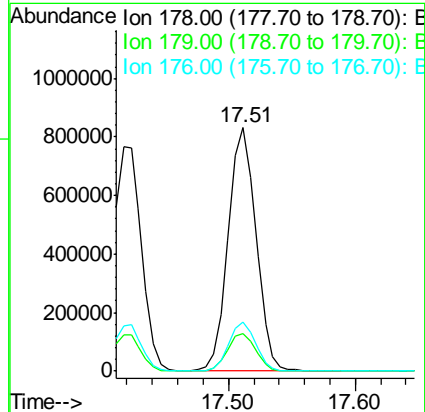
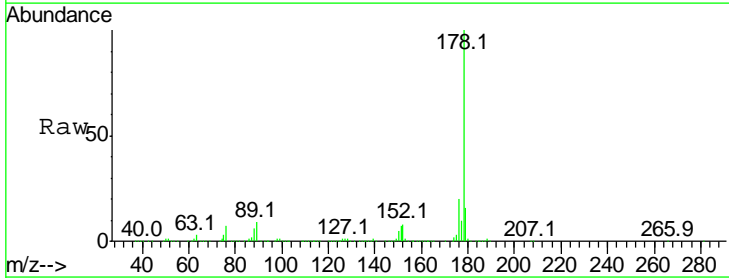
Ion	Ratio	Lower	Upper
178	100		
179	16.0	12.2	18.4
176	20.2	15.6	23.4

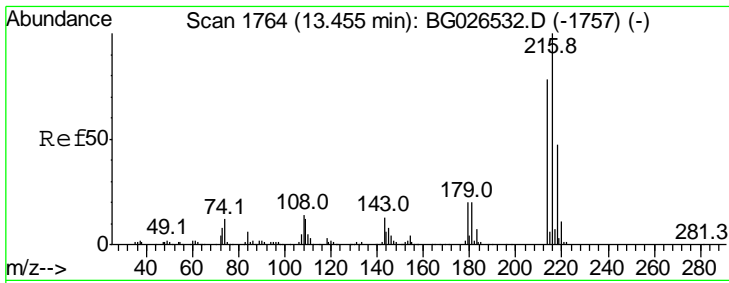


#71  
 Anthracene  
 Concen: 21.00 ng/ul  
 RT: 17.51 min Scan# 2455  
 Delta R.T. -0.00 min  
 Lab File: BG026539.D  
 Acq: 3 Apr 2017 17:42

Tgt Ion:178 Resp: 1258749

Ion	Ratio	Lower	Upper
178	100		
179	15.7	12.1	18.1
176	20.0	14.8	22.2

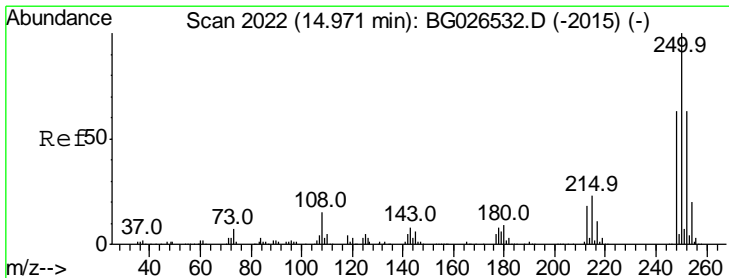
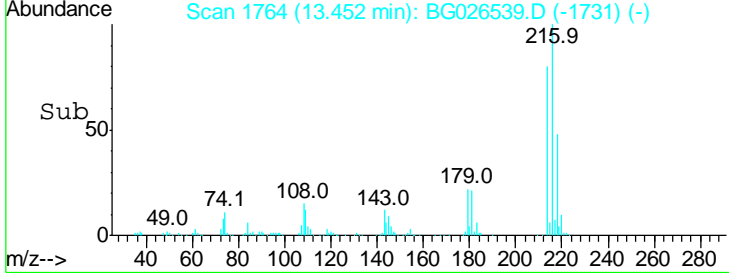
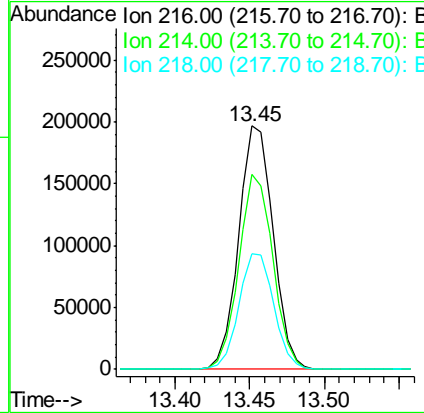
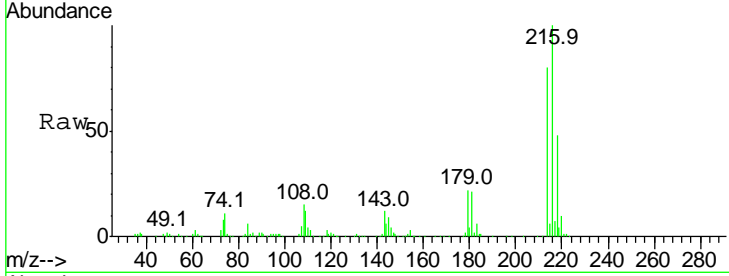




#72  
 1,2,3,4-Tetrachlorobenzene  
 Concen: 21.43 ng/uL  
 RT: 13.45 min Scan# 1764  
 Delta R.T. -0.00 min  
 Lab File: BG026539.D  
 Acq: 3 Apr 2017 17:42

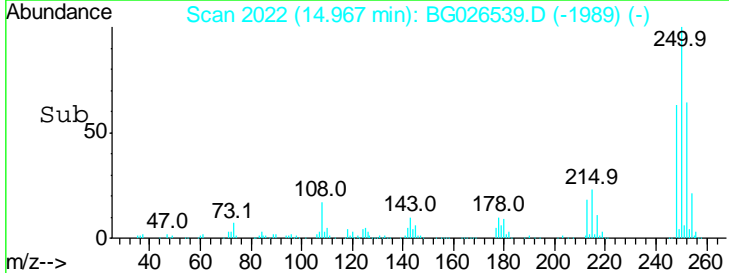
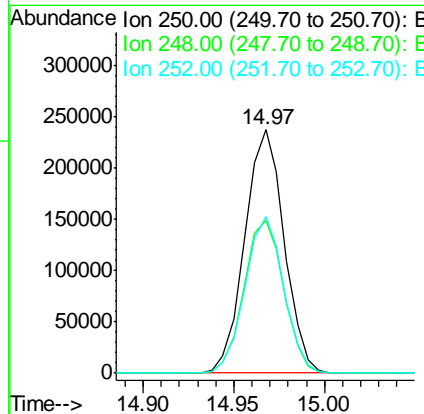
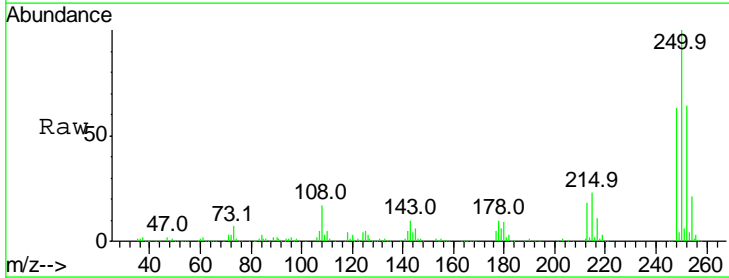
Instrument :  
 BNA\_G  
 ClientSampled :  
 SST02024

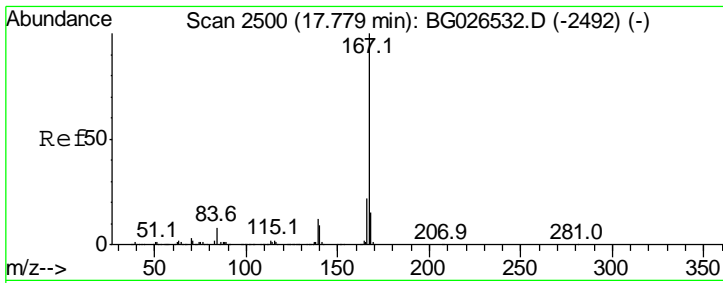
Tgt Ion	Resp	Lower	Upper
216	315627		
216	100		
214	80.0	62.5	93.7
218	47.7	38.4	57.6



#73  
 Pentachlorobenzene  
 Concen: 21.30 ng/uL  
 RT: 14.97 min Scan# 2022  
 Delta R.T. -0.00 min  
 Lab File: BG026539.D  
 Acq: 3 Apr 2017 17:42

Tgt Ion	Resp	Lower	Upper
250	356878		
250	100		
248	62.9	50.6	75.8
252	64.1	51.4	77.0



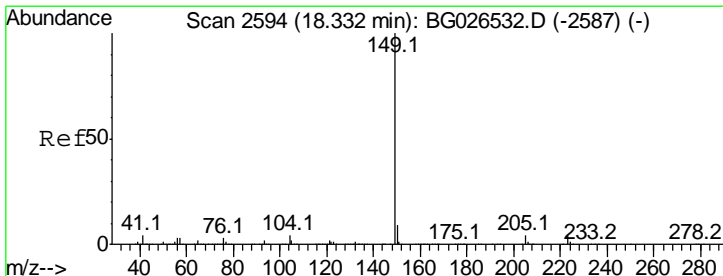
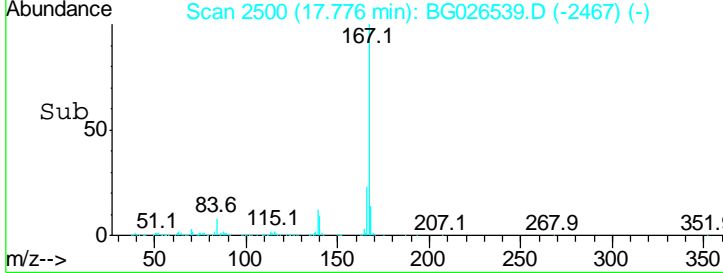
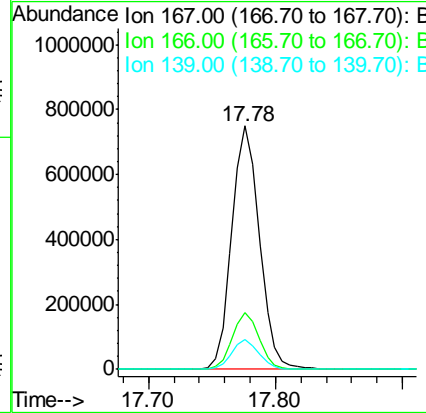
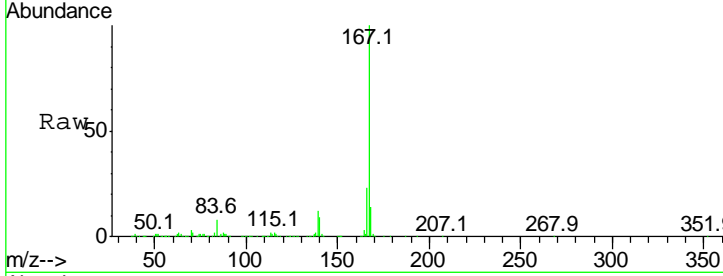


#74  
 Carbazole  
 Concen: 21.98 ng/ul  
 RT: 17.78 min Scan# 2500  
 Delta R.T. -0.00 min  
 Lab File: BG026539.D  
 Acq: 3 Apr 2017 17:42

Instrument :  
 BNA\_G  
 ClientSampled :  
 SSTD02024

Tgt Ion:167 Resp: 1132890

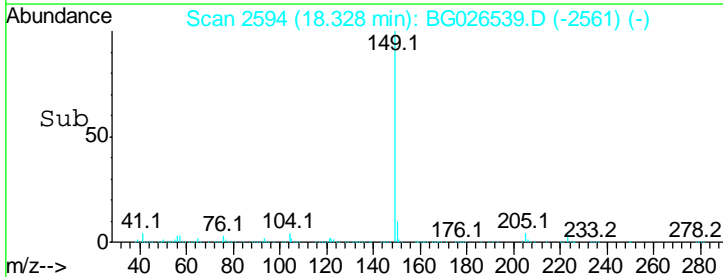
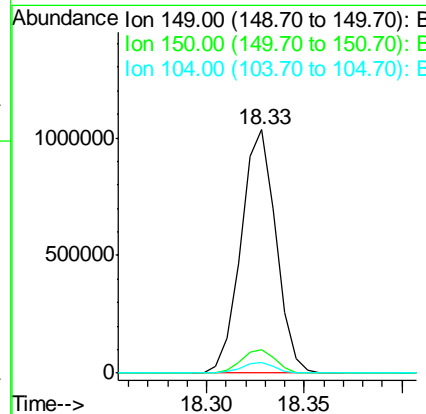
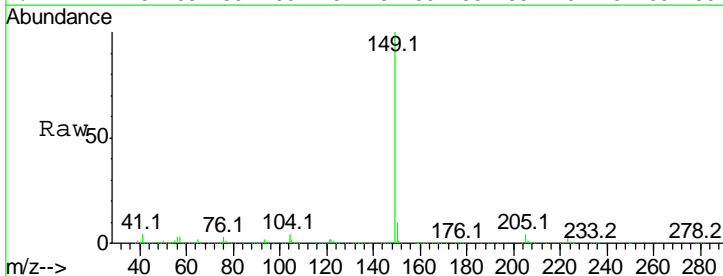
Ion	Ratio	Lower	Upper
167	100		
166	23.2	17.0	25.6
139	12.5	11.0	16.4

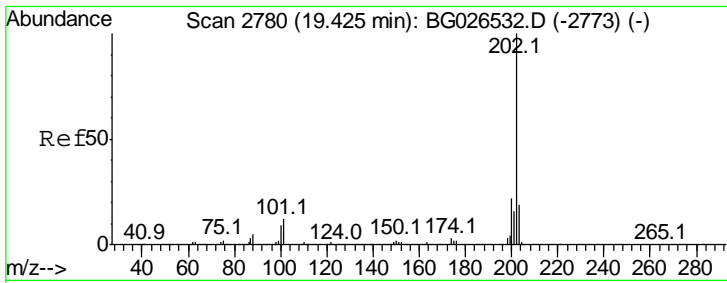


#75  
 Di-n-butylphthalate  
 Concen: 21.12 ng/ul  
 RT: 18.33 min Scan# 2594  
 Delta R.T. -0.00 min  
 Lab File: BG026539.D  
 Acq: 3 Apr 2017 17:42

Tgt Ion:149 Resp: 1282876

Ion	Ratio	Lower	Upper
149	100		
150	9.6	7.4	11.0
104	4.3	4.0	6.0



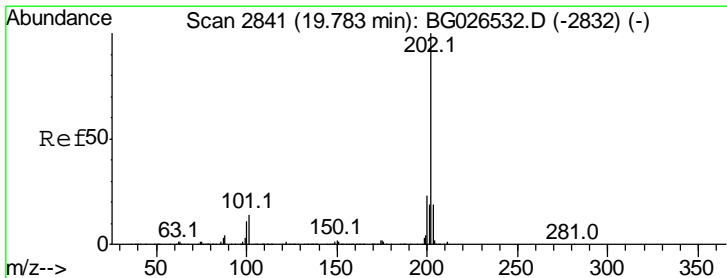
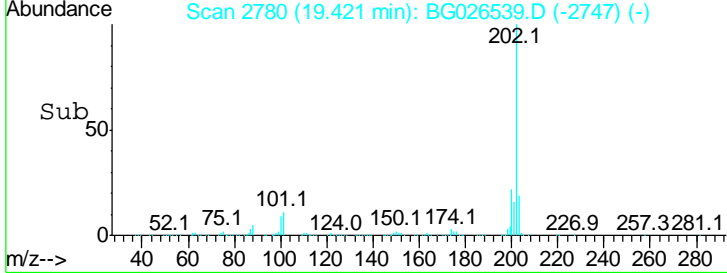
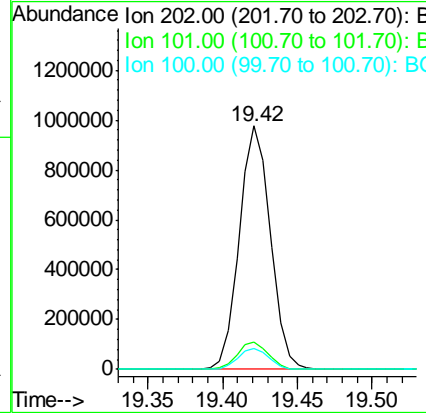
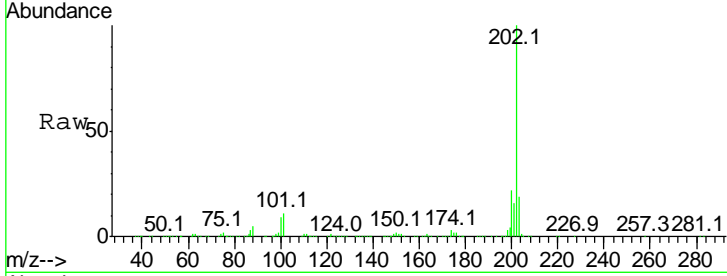


#76  
 Fluoranthene  
 Concen: 22.58 ng/ul  
 RT: 19.42 min Scan# 2780  
 Delta R.T. -0.00 min  
 Lab File: BG026539.D  
 Acq: 3 Apr 2017 17:42

Instrument :  
 BNA\_G  
 ClientSampled :  
 SST02024

Tgt Ion: 202 Resp: 1413343

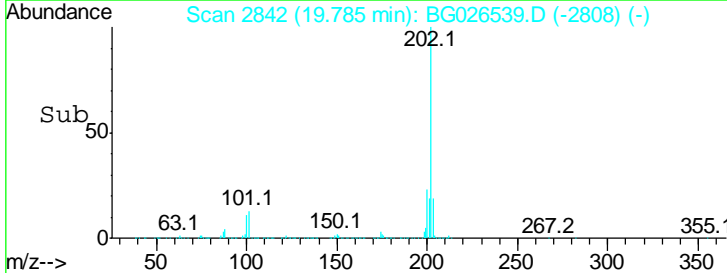
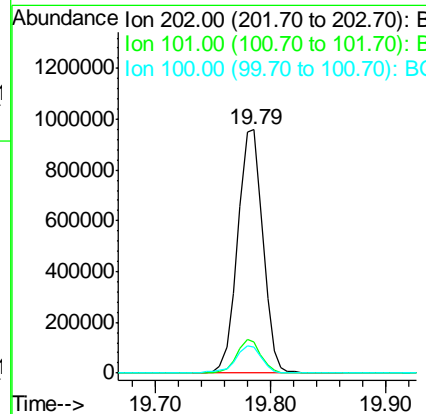
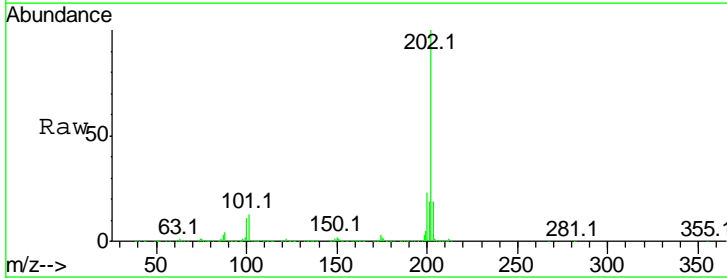
Ion	Ratio	Lower	Upper
202	100		
101	11.4	8.8	13.2
100	8.7	6.6	9.8



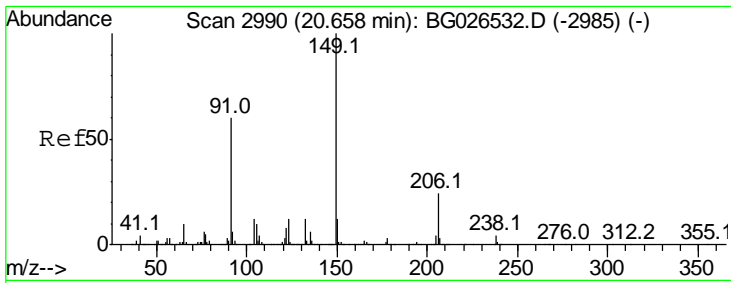
#79  
 Pyrene  
 Concen: 21.35 ng/ul  
 RT: 19.79 min Scan# 2842  
 Delta R.T. 0.00 min  
 Lab File: BG026539.D  
 Acq: 3 Apr 2017 17:42

Tgt Ion: 202 Resp: 1442333

Ion	Ratio	Lower	Upper
202	100		
101	13.0	10.2	15.2
100	10.9	8.5	12.7



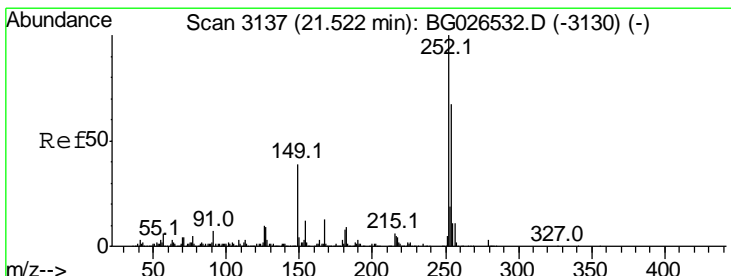
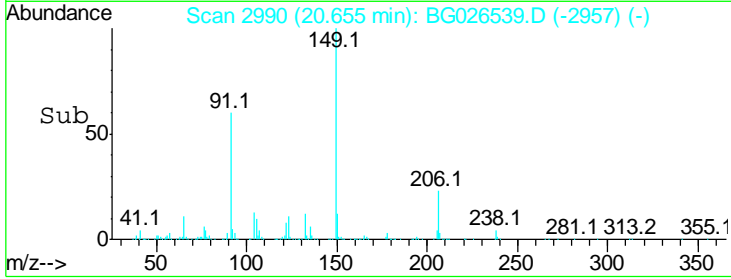
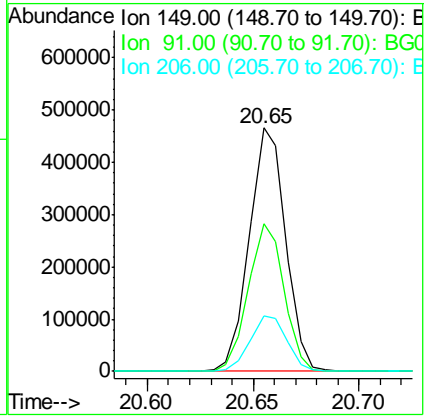
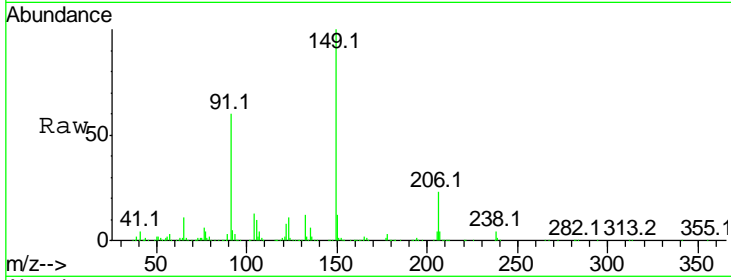




#80  
 Butylbenzylphthalate  
 Concen: 20.83 ng/ul  
 RT: 20.65 min Scan# 2990  
 Delta R.T. -0.00 min  
 Lab File: BG026539.D  
 Acq: 3 Apr 2017 17:42

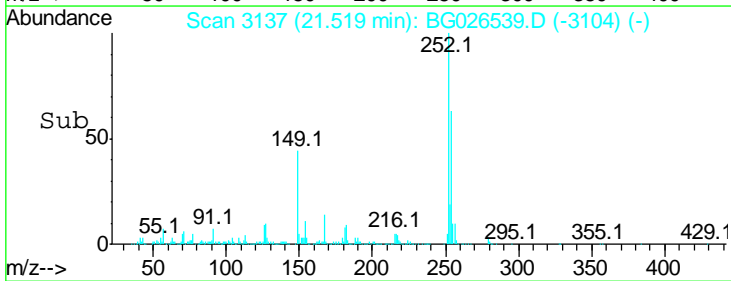
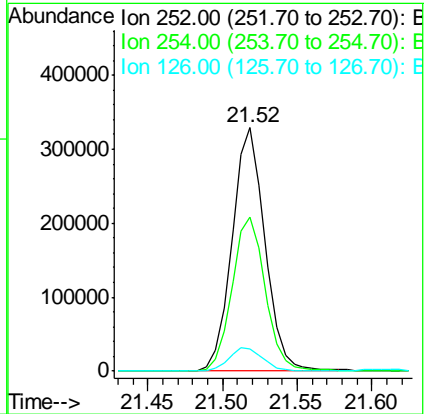
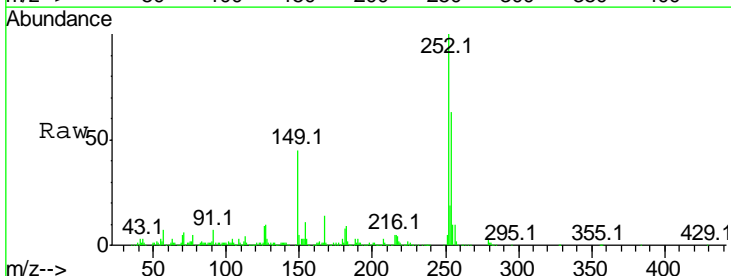
Instrument :  
 BNA\_G  
 ClientSampled :  
 SSTD02024

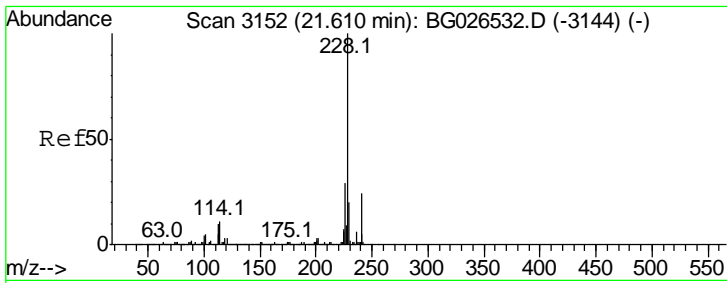
Tgt Ion	Resp	Lower	Upper
149	100		
91	60.5	53.4	80.2
206	22.7	16.6	24.8



#81  
 3,3'-Dichlorobenzidine  
 Concen: 24.01 ng/ul  
 RT: 21.52 min Scan# 3137  
 Delta R.T. -0.00 min  
 Lab File: BG026539.D  
 Acq: 3 Apr 2017 17:42

Tgt Ion	Resp	Lower	Upper
252	100		
254	63.4	52.2	78.2
126	9.1	9.4	14.2#



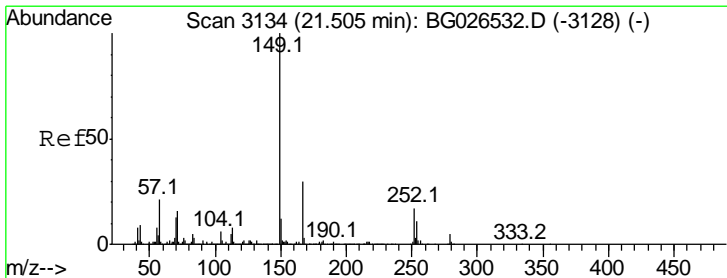
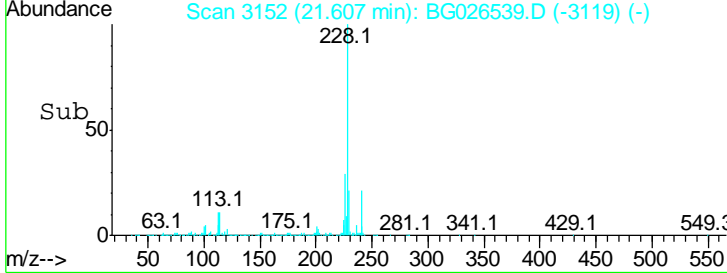
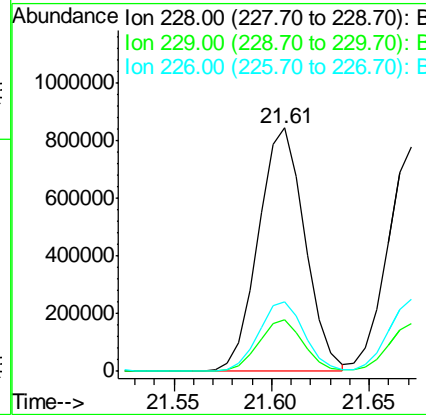
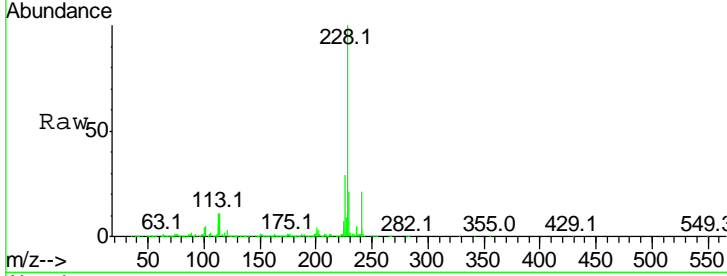


#82  
 Benzo(a)anthracene  
 Concen: 21.15 ng/ul  
 RT: 21.61 min Scan# 3152  
 Delta R.T. -0.00 min  
 Lab File: BG026539.D  
 Acq: 3 Apr 2017 17:42

Instrument :  
 BNA\_G  
 ClientSampled :  
 SSTD02024

Tgt Ion:228 Resp: 1388277

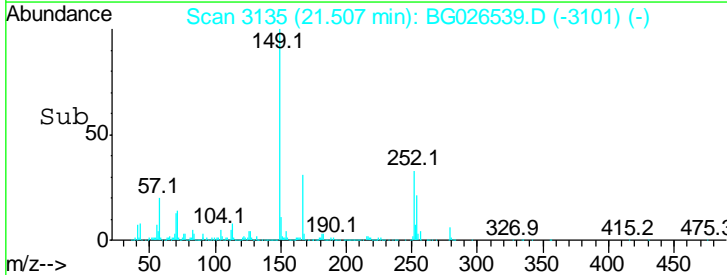
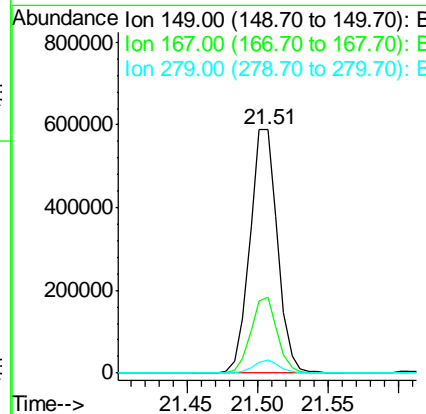
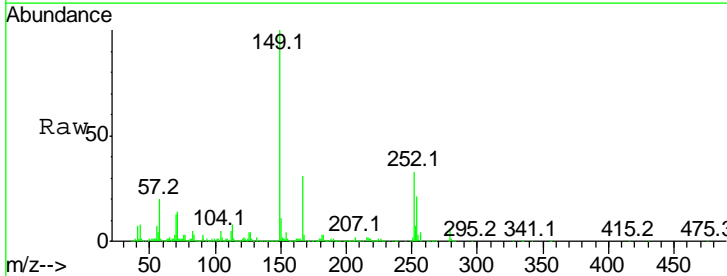
Ion	Ratio	Lower	Upper
228	100		
229	21.0	15.7	23.5
226	28.8	21.8	32.6

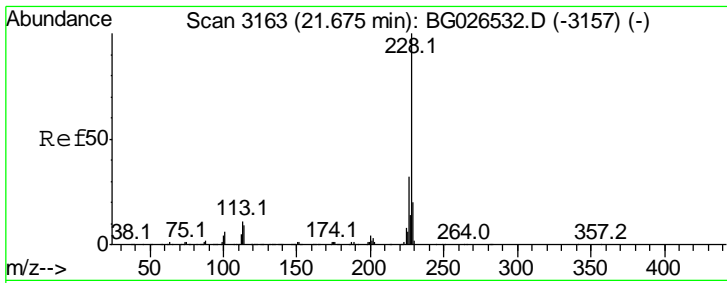


#83  
 Bis(2-ethylhexyl)phthalate  
 Concen: 21.09 ng/ul  
 RT: 21.51 min Scan# 3135  
 Delta R.T. 0.00 min  
 Lab File: BG026539.D  
 Acq: 3 Apr 2017 17:42

Tgt Ion:149 Resp: 805349

Ion	Ratio	Lower	Upper
149	100		
167	31.1	21.6	32.4
279	5.6	3.0	4.4#



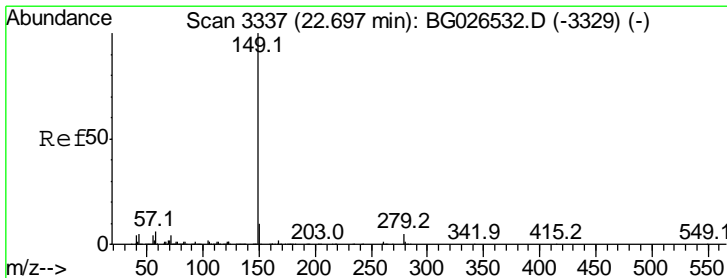
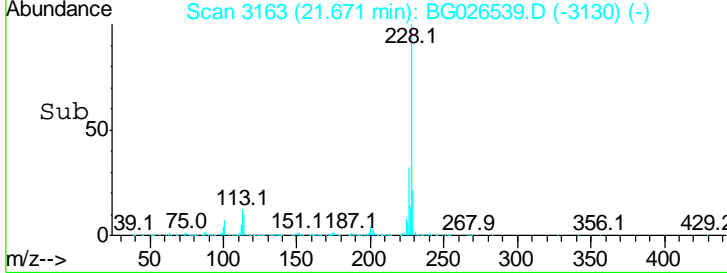
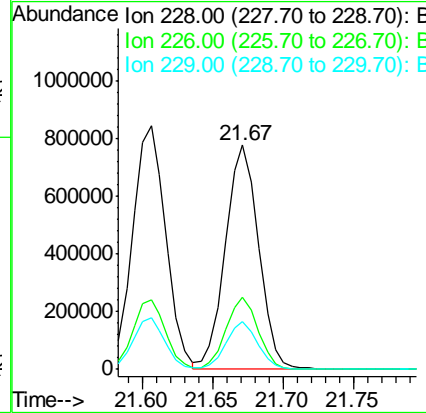
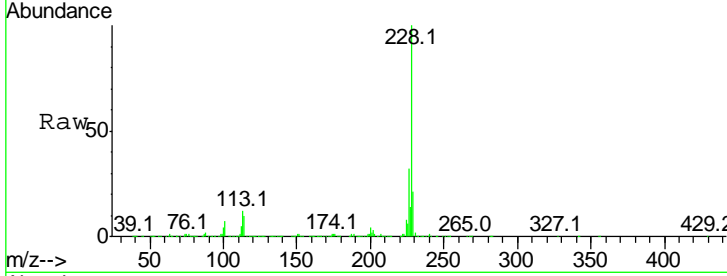


#84  
 Chrysene  
 Concen: 20.89 ng/ul  
 RT: 21.67 min Scan# 3163  
 Delta R.T. -0.00 min  
 Lab File: BG026539.D  
 Acq: 3 Apr 2017 17:42

Instrument :  
 BNA\_G  
 ClientSampled :  
 SSTD02024

Tgt Ion: 228 Resp: 1267743

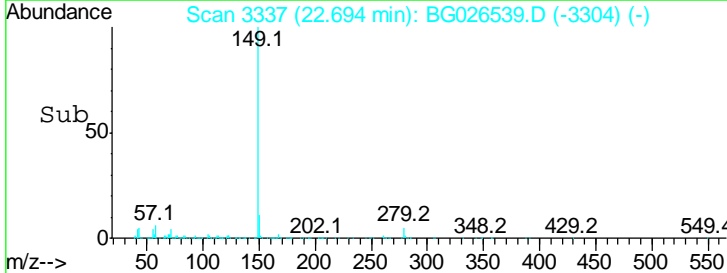
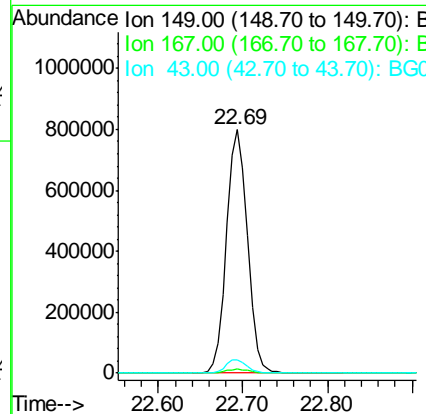
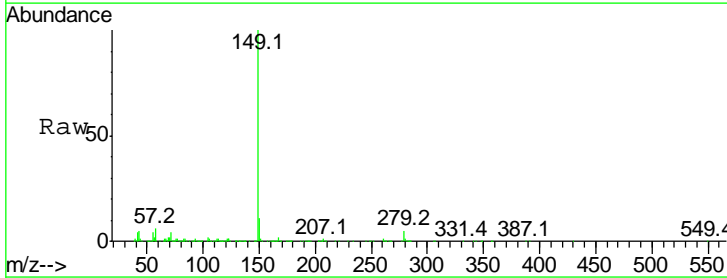
Ion	Ratio	Lower	Upper
228	100		
226	32.5	24.0	36.0
229	21.1	15.6	23.4

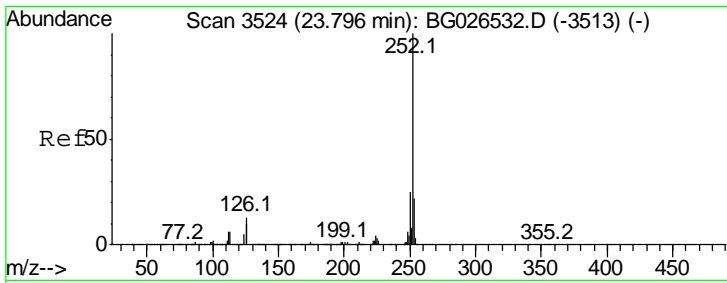


#86  
 Di-n-octyl phthalate  
 Concen: 22.19 ng/ul  
 RT: 22.69 min Scan# 3337  
 Delta R.T. -0.00 min  
 Lab File: BG026539.D  
 Acq: 3 Apr 2017 17:42

Tgt Ion: 149 Resp: 1369258

Ion	Ratio	Lower	Upper
149	100		
167	1.8	1.2	1.8
43	5.2	5.6	8.4#



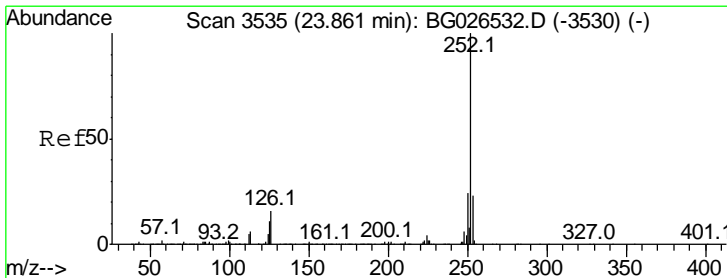
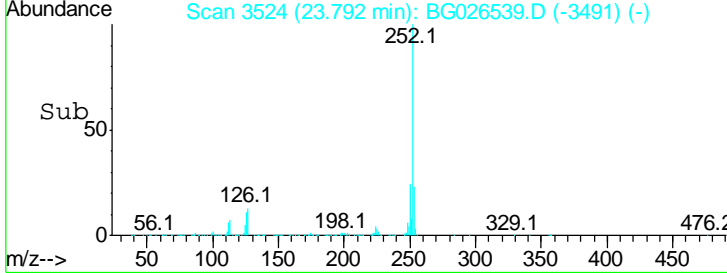
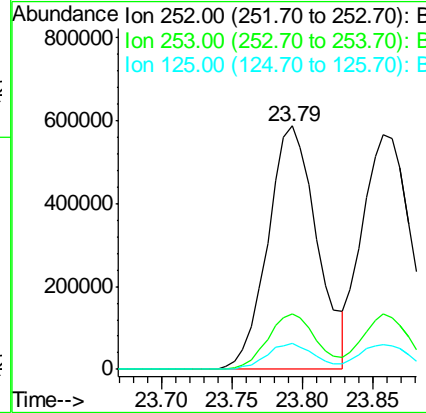
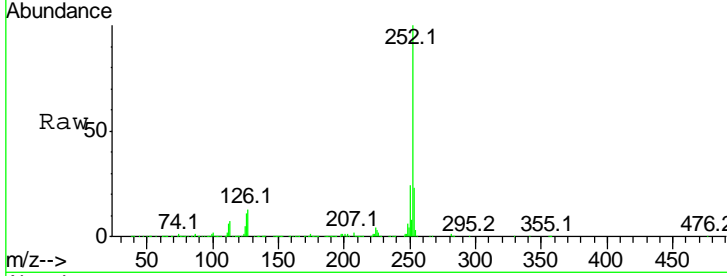


#87  
 Benzo(b)fluoranthene  
 Concen: 21.06 ng/ul  
 RT: 23.79 min Scan# 3524  
 Delta R.T. -0.00 min  
 Lab File: BG026539.D  
 Acq: 3 Apr 2017 17:42

Instrument :  
 BNA\_G  
 ClientSampled :  
 SSTD02024

Tgt Ion: 252 Resp: 1433348

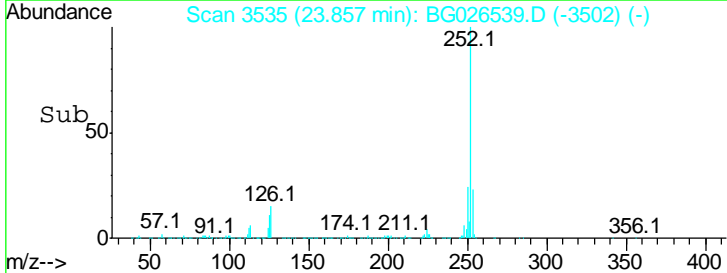
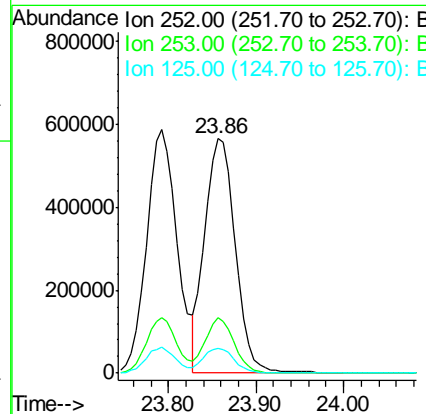
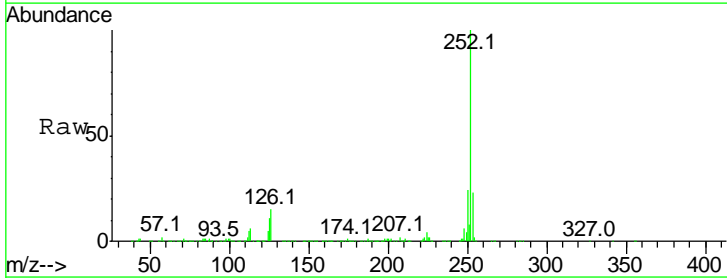
Ion	Ratio	Lower	Upper
252	100		
253	22.5	17.5	26.3
125	10.9	8.5	12.7

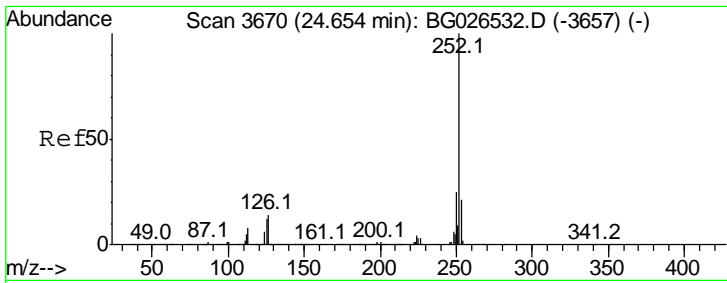


#88  
 Benzo(k)fluoranthene  
 Concen: 21.15 ng/ul  
 RT: 23.86 min Scan# 3535  
 Delta R.T. -0.00 min  
 Lab File: BG026539.D  
 Acq: 3 Apr 2017 17:42

Tgt Ion: 252 Resp: 1374403

Ion	Ratio	Lower	Upper
252	100		
253	23.4	17.3	25.9
125	10.7	8.2	12.2



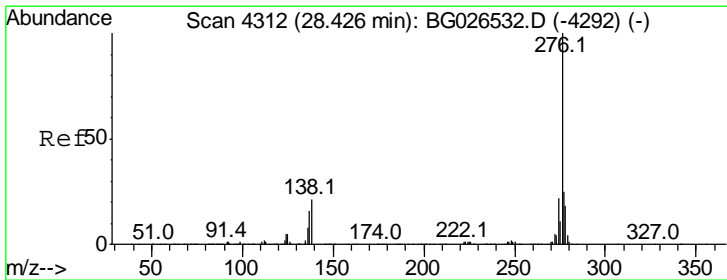
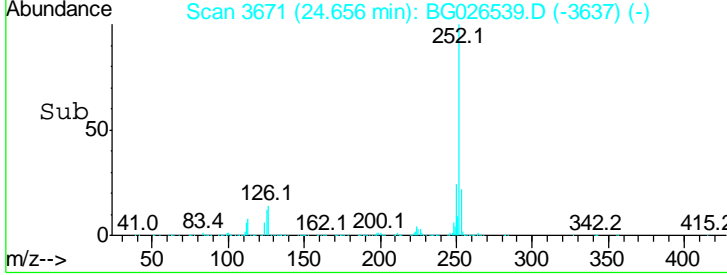
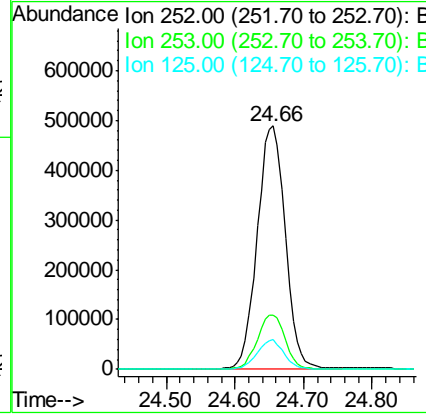
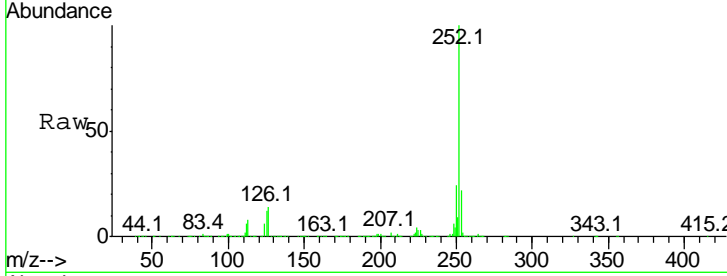


#90  
 Benzo(a)pyrene  
 Concen: 21.20 ng/ul  
 RT: 24.66 min Scan# 3671  
 Delta R.T. 0.00 min  
 Lab File: BG026539.D  
 Acq: 3 Apr 2017 17:42

Instrument :  
 BNA\_G  
 ClientSampled :  
 SST02024

Tgt Ion: 252 Resp: 1395792

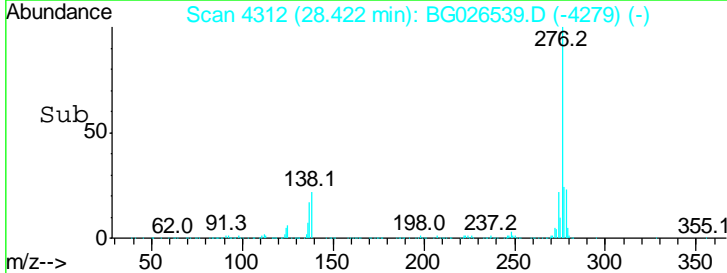
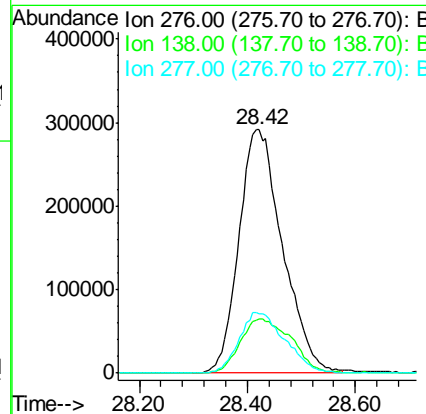
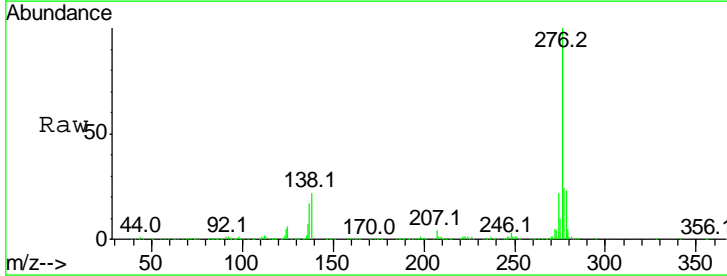
Ion	Ratio	Lower	Upper
252	100		
253	22.2	17.2	25.8
125	12.1	9.0	13.6

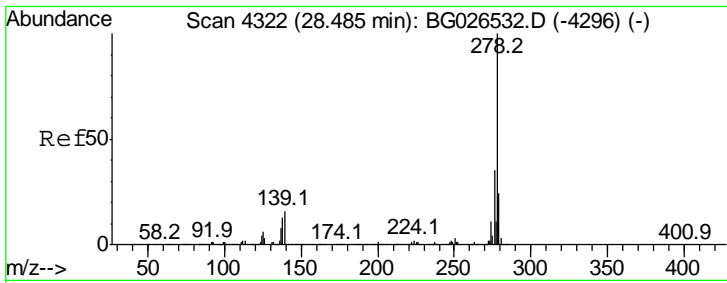


#91  
 Indeno(1,2,3-cd)pyrene  
 Concen: 20.61 ng/ul  
 RT: 28.42 min Scan# 4312  
 Delta R.T. -0.00 min  
 Lab File: BG026539.D  
 Acq: 3 Apr 2017 17:42

Tgt Ion: 276 Resp: 1635746

Ion	Ratio	Lower	Upper
276	100		
138	22.1	22.3	33.5#
277	24.4	20.2	30.2



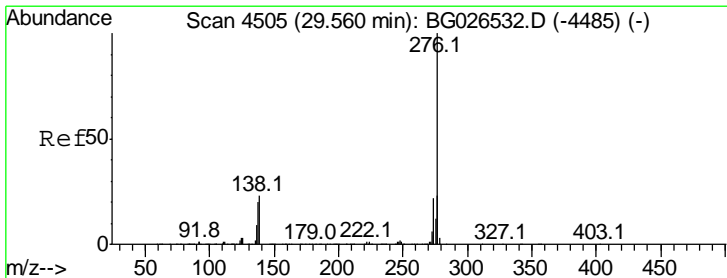
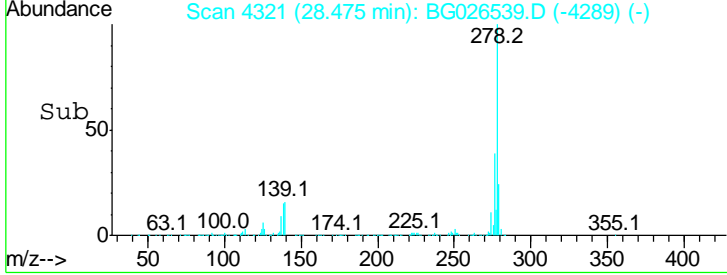
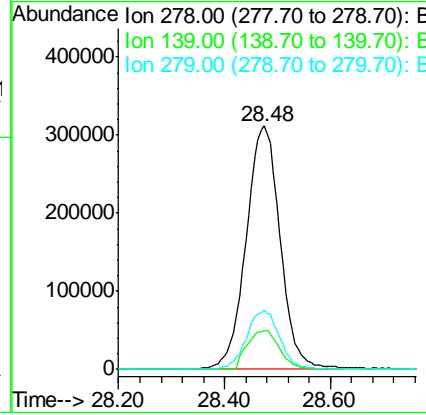
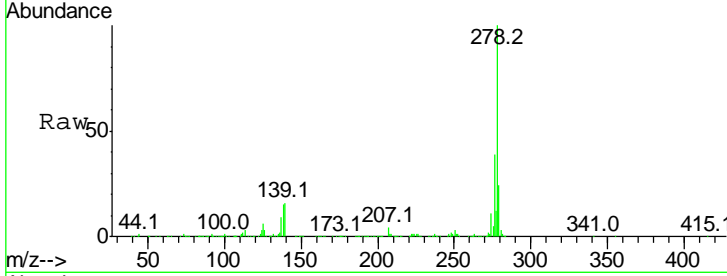


#92  
 Dibenzo(a,h)anthracene  
 Concen: 21.01 ng/ul  
 RT: 28.48 min Scan# 4321  
 Delta R.T. -0.01 min  
 Lab File: BG026539.D  
 Acq: 3 Apr 2017 17:42

Instrument :  
 BNA\_G  
 ClientSampled :  
 SSTD02024

Tgt Ion: 278 Resp: 1392171

Ion	Ratio	Lower	Upper
278	100		
139	15.9	13.9	20.9
279	24.2	19.0	28.4



#93  
 Benzo(g,h,i)perylene  
 Concen: 20.78 ng/ul  
 RT: 29.54 min Scan# 4503  
 Delta R.T. -0.02 min  
 Lab File: BG026539.D  
 Acq: 3 Apr 2017 17:42

Tgt Ion: 276 Resp: 1371952

Ion	Ratio	Lower	Upper
276	100		
138	22.1	18.9	28.3
277	23.1	19.2	28.8

