

Data Path : Z:\svoasrv\HPCHEM1\BNA\_G\Data\BG040423\  
 Data File : BG056980.D  
 Acq On : 5 Apr 2023 1:09  
 Operator : CG/JU  
 Sample : 02170-01 2X  
 Misc :  
 ALS Vial : 15 Sample Multiplier: 1

Instrument :  
 BNA\_G  
 ClientSampleId :  
 EO-3-033123

Integration Parameters: rteint.p

Integrator: RTE  
 Smoothing : ON  
 Sampling : 1  
 Start Thrs : 0.2  
 Stop Thrs : 0

Filtering: 5  
 Min Area: 3 % of largest Peak  
 Max Peaks: 100  
 Peak Location: TOP

If leading or trailing edge < 100 prefer < Baseline drop else tangent >  
 Peak separation: 5

Method : Z:\svoasrv\HPCHEM1\BNA\_G\Methods\8270-BG033023.M  
 Title : ASP BNA STANDARDS FOR 5 POINT CALIBRATION

Signal : TIC: BG056980.D\data.ms

| peak # | R.T. min | first scan | max scan | last scan | PK TY | peak height | corr. area | corr. % max. | % of total |
|--------|----------|------------|----------|-----------|-------|-------------|------------|--------------|------------|
| 1      | 5.442    | 318        | 324      | 332       | rVB   | 42043       | 66396      | 8.85%        | 1.121%     |
| 2      | 5.924    | 400        | 406      | 416       | rVB   | 103238      | 170419     | 22.72%       | 2.878%     |
| 3      | 7.545    | 675        | 682      | 691       | rBB   | 112590      | 197410     | 26.32%       | 3.334%     |
| 4      | 8.414    | 823        | 830      | 837       | rBB2  | 81431       | 139907     | 18.66%       | 2.363%     |
| 5      | 9.589    | 1023       | 1030     | 1040      | rVB   | 69250       | 122747     | 16.37%       | 2.073%     |
| 6      | 11.258   | 1306       | 1314     | 1321      | rBV   | 106728      | 193373     | 25.78%       | 3.265%     |
| 7      | 13.654   | 1716       | 1722     | 1729      | rVB   | 201360      | 302151     | 40.29%       | 5.102%     |
| 8      | 14.471   | 1859       | 1861     | 1870      | rVB4  | 4620        | 9070       | 1.21%        | 0.153%     |
| 9      | 14.759   | 1905       | 1910     | 1918      | rBV   | 18193       | 30858      | 4.11%        | 0.521%     |
| 10     | 15.029   | 1948       | 1956     | 1963      | rVB2  | 176885      | 275899     | 36.79%       | 4.659%     |
| 11     | 15.487   | 2030       | 2034     | 2040      | rBV3  | 4589        | 7584       | 1.01%        | 0.128%     |
| 12     | 15.822   | 2085       | 2091     | 2097      | rVB6  | 5375        | 10467      | 1.40%        | 0.177%     |
| 13     | 16.362   | 2179       | 2183     | 2187      | rVB3  | 9636        | 13073      | 1.74%        | 0.221%     |
| 14     | 16.503   | 2202       | 2207     | 2214      | rVB   | 147991      | 227447     | 30.33%       | 3.841%     |
| 15     | 17.061   | 2297       | 2302     | 2308      | rVB9  | 5610        | 11068      | 1.48%        | 0.187%     |
| 16     | 17.473   | 2369       | 2372     | 2377      | rVV6  | 5285        | 9778       | 1.30%        | 0.165%     |
| 17     | 17.766   | 2416       | 2422     | 2427      | rBV   | 204535      | 319411     | 42.59%       | 5.394%     |
| 18     | 17.808   | 2427       | 2429     | 2435      | rVB   | 51446       | 69647      | 9.29%        | 1.176%     |
| 19     | 17.902   | 2440       | 2445     | 2448      | rVV   | 16655       | 24610      | 3.28%        | 0.416%     |
| 20     | 18.160   | 2485       | 2489     | 2490      | rBV4  | 8453        | 12050      | 1.61%        | 0.203%     |
| 21     | 18.213   | 2495       | 2498     | 2501      | rVB4  | 5706        | 9007       | 1.20%        | 0.152%     |
| 22     | 18.277   | 2506       | 2509     | 2513      | rVB5  | 5497        | 8298       | 1.11%        | 0.140%     |
| 23     | 18.348   | 2518       | 2521     | 2525      | rVB5  | 6937        | 10527      | 1.40%        | 0.178%     |
| 24     | 18.601   | 2561       | 2564     | 2567      | rBV4  | 25103       | 34194      | 4.56%        | 0.577%     |
| 25     | 18.636   | 2567       | 2570     | 2574      | rVV   | 24766       | 36506      | 4.87%        | 0.616%     |
| 26     | 18.683   | 2574       | 2578     | 2582      | rVB   | 28200       | 41110      | 5.48%        | 0.694%     |
| 27     | 18.759   | 2587       | 2591     | 2596      | rVB3  | 16147       | 26157      | 3.49%        | 0.442%     |
| 28     | 18.830   | 2596       | 2603     | 2607      | rBV4  | 37968       | 85519      | 11.40%       | 1.444%     |
| 29     | 19.118   | 2649       | 2652     | 2656      | rVB2  | 17363       | 18624      | 2.48%        | 0.314%     |
| 30     | 19.170   | 2657       | 2661     | 2664      | rVB6  | 13472       | 17955      | 2.39%        | 0.303%     |
| 31     | 19.347   | 2689       | 2691     | 2695      | rVB4  | 9231        | 9944       | 1.33%        | 0.168%     |
| 32     | 19.411   | 2699       | 2702     | 2705      | rVV5  | 13391       | 12664      | 1.69%        | 0.214%     |
| 33     | 19.535   | 2717       | 2723     | 2728      | rBV2  | 34756       | 71053      | 9.47%        | 1.200%     |
| 34     | 19.676   | 2743       | 2747     | 2751      | rBV4  | 17820       | 31772      | 4.24%        | 0.537%     |
| 35     | 19.799   | 2762       | 2768     | 2773      | rBV   | 266214      | 377031     | 50.27%       | 6.367%     |
| 36     | 20.122   | 2819       | 2823     | 2825      | rBV2  | 41220       | 64264      | 8.57%        | 1.085%     |

Data Path : Z:\svoasrv\HPCHEM1\BNA\_G\Data\BG040423\  
Data File : BG056980.D  
Acq On : 5 Apr 2023 1:09  
Operator : CG/JU  
Sample : 02170-01 2X  
Misc :  
ALS Vial : 15 Sample Multiplier: 1

Instrument :  
BNA\_G  
ClientSampleId :  
EO-3-033123

Integration Parameters: rteint.p  
Integrator: RTE  
Smoothing : ON Filtering: 5  
Sampling : 1 Min Area: 3 % of largest Peak  
Start Thrs: 0.2 Max Peaks: 100  
Stop Thrs : 0 Peak Location: TOP

If leading or trailing edge < 100 prefer < Baseline drop else tangent >  
Peak separation: 5

Method : Z:\svoasrv\HPCHEM1\BNA\_G\Methods\8270-BG033023.M  
Title : ASP BNA STANDARDS FOR 5 POINT CALIBRATION

|    |        |      |      |      |      |        |        |         |         |
|----|--------|------|------|------|------|--------|--------|---------|---------|
| 37 | 20.157 | 2825 | 2829 | 2835 | rVB  | 274388 | 387384 | 51.65%  | 6.542%  |
| 38 | 20.222 | 2836 | 2840 | 2843 | rBV3 | 25872  | 35334  | 4.71%   | 0.597%  |
| 39 | 20.334 | 2854 | 2859 | 2864 | rBV  | 291500 | 371611 | 49.55%  | 6.275%  |
| 40 | 20.739 | 2925 | 2928 | 2932 | rVB  | 38182  | 46406  | 6.19%   | 0.784%  |
| 41 | 22.072 | 3149 | 3155 | 3163 | rBV3 | 255993 | 749947 | 100.00% | 12.664% |
| 42 | 22.143 | 3163 | 3167 | 3175 | rVB  | 178879 | 331188 | 44.16%  | 5.593%  |
| 43 | 24.516 | 3562 | 3571 | 3578 | rBV2 | 154452 | 565433 | 75.40%  | 9.548%  |
| 44 | 25.480 | 3730 | 3735 | 3747 | rVB  | 130912 | 366540 | 48.88%  | 6.190%  |

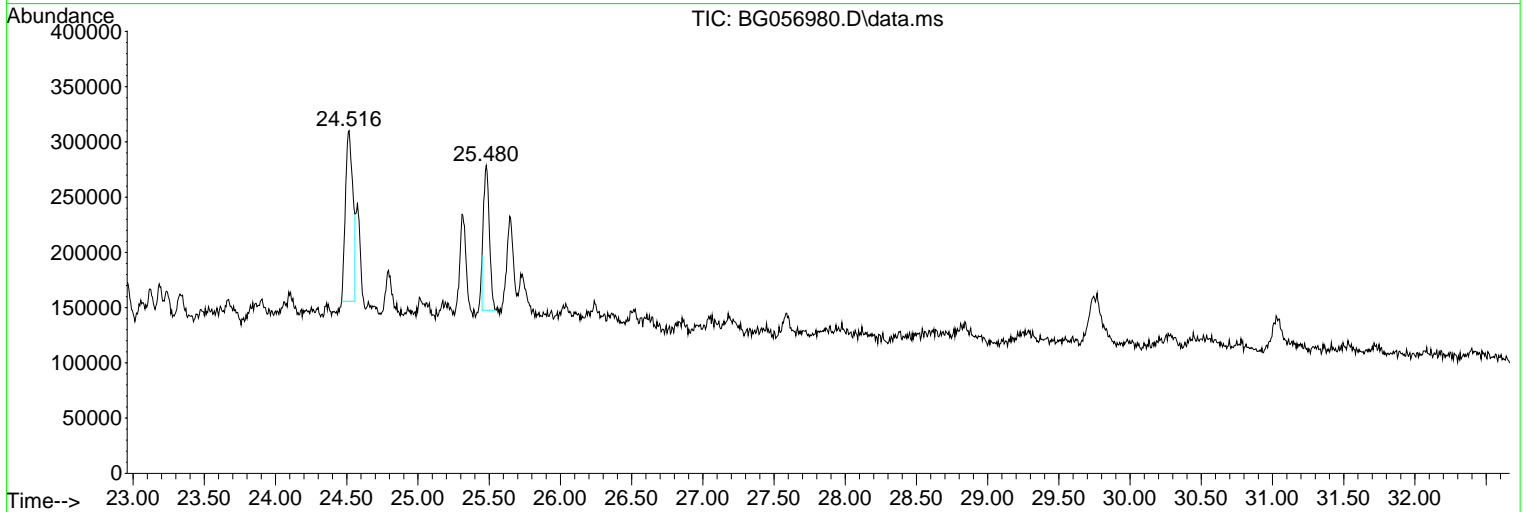
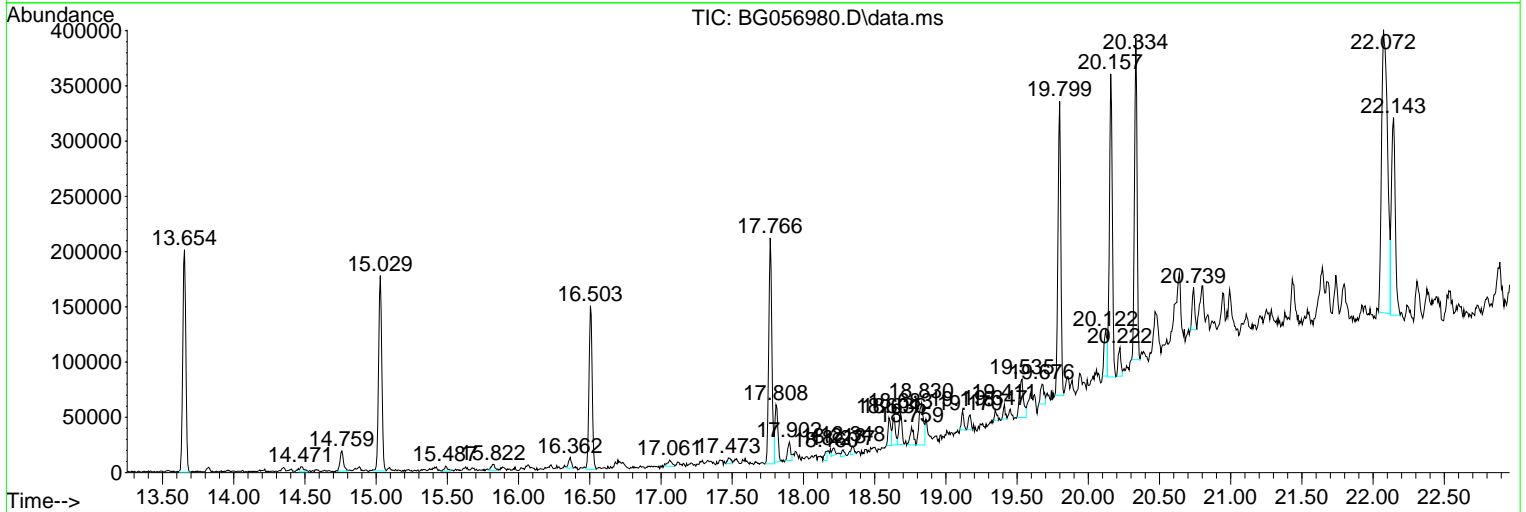
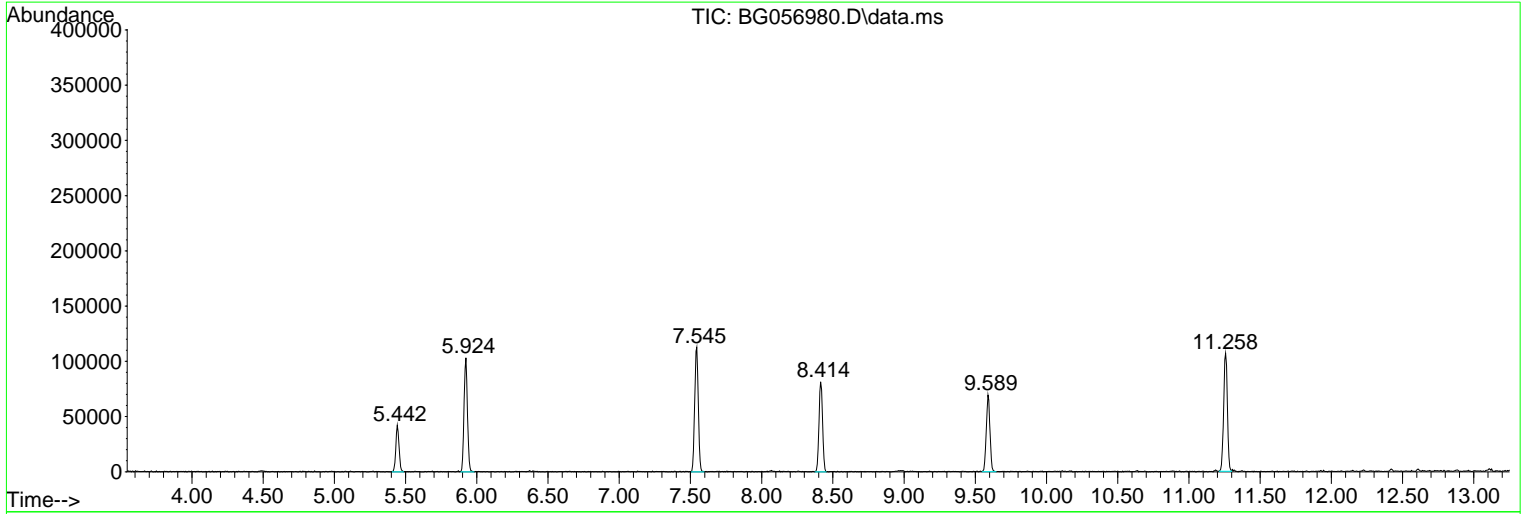
Sum of corrected areas: 5921833

Data Path : Z:\svoasrv\HPCHEM1\BNA\_G\Data\BG040423\  
 Data File : BG056980.D  
 Acq On : 5 Apr 2023 1:09  
 Operator : CG/JU  
 Sample : 02170-01 2X  
 Misc :  
 ALS Vial : 15 Sample Multiplier: 1

**Instrument :**  
 BNA\_G  
**ClientSampleId :**  
 EO-3-033123

Quant Method : Z:\svoasrv\HPCHEM1\BNA\_G\Methods\8270-BG033023.M  
 Quant Title : ASP BNA STANDARDS FOR 5 POINT CALIBRATION

TIC Library : C:\Database\NIST20.L  
 TIC Integration Parameters: LSCINT.P



Data Path : Z:\svoasrv\HPCHEM1\BNA\_G\Data\BG040423\  
 Data File : BG056980.D  
 Acq On : 5 Apr 2023 1:09  
 Operator : CG/JU  
 Sample : 02170-01 2X  
 Misc :  
 ALS Vial : 15 Sample Multiplier: 1

Instrument :  
 BNA\_G  
 ClientSampleId :  
 EO-3-033123

Quant Method : Z:\svoasrv\HPCHEM1\BNA\_G\Methods\8270-BG033023.M  
 Quant Title : ASP BNA STANDARDS FOR 5 POINT CALIBRATION

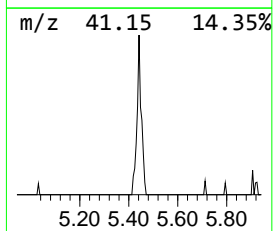
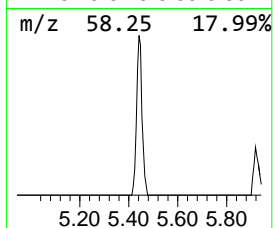
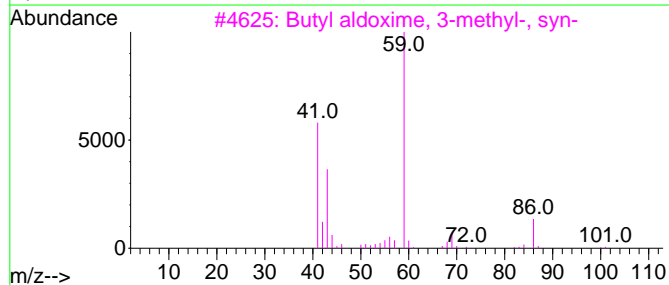
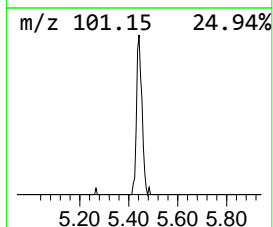
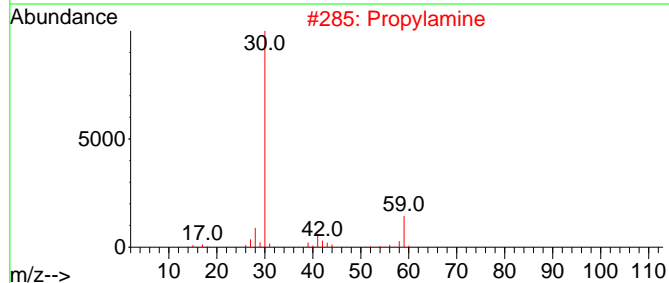
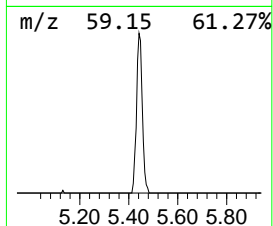
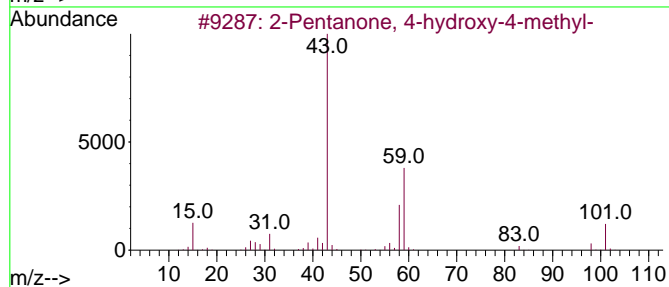
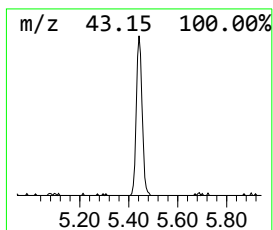
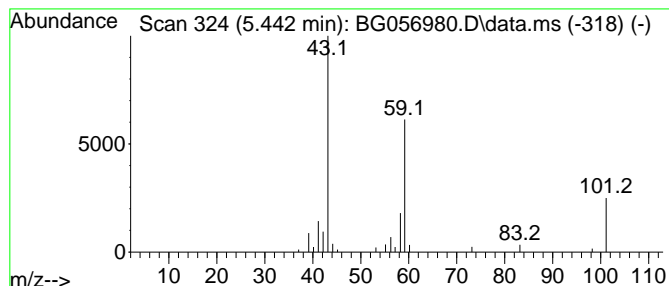
TIC Library : C:\Database\NIST20.L  
 TIC Integration Parameters: LSCINT.P

\*\*\*\*\*  
 Peak Number 1 2-Pentanone, 4-hydroxy-4-me... Concentration Rank 1

| R.T.  | EstConc | Area  | Relative to ISTD       | R.T.  |
|-------|---------|-------|------------------------|-------|
| 5.442 | 9.49 ng | 66396 | 1,4-Dichlorobenzene-d4 | 8.414 |

| Hit# | of 5 | Tentative ID                     | MW  | MolForm | CAS#        | Qual |
|------|------|----------------------------------|-----|---------|-------------|------|
| 1    |      | 2-Pentanone, 4-hydroxy-4-methyl- | 116 | C6H12O2 | 000123-42-2 | 64   |
| 2    |      | Propylamine                      | 59  | C3H9N   | 000107-10-8 | 38   |
| 3    |      | Butyl aldoxime, 3-methyl-, syn-  | 101 | C5H11NO | 005780-40-5 | 32   |
| 4    |      | Butane                           | 58  | C4H10   | 000106-97-8 | 12   |
| 5    |      | 1-Propen-2-ol, acetate           | 100 | C5H8O2  | 000108-22-5 | 10   |



Data Path : Z:\svoasrv\HPCHEM1\BNA\_G\Data\BG040423\  
 Data File : BG056980.D  
 Acq On : 5 Apr 2023 1:09  
 Operator : CG/JU  
 Sample : 02170-01 2X  
 Misc :  
 ALS Vial : 15 Sample Multiplier: 1

Instrument :  
 BNA\_G  
 ClientSampleId :  
 EO-3-033123

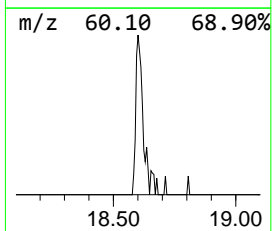
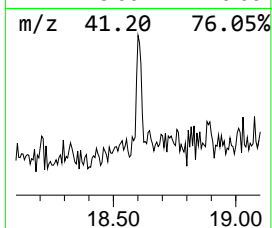
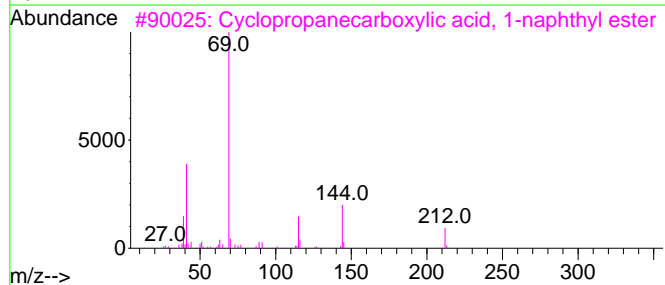
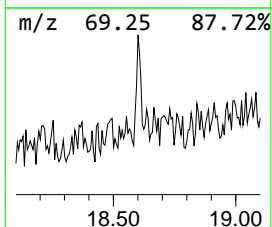
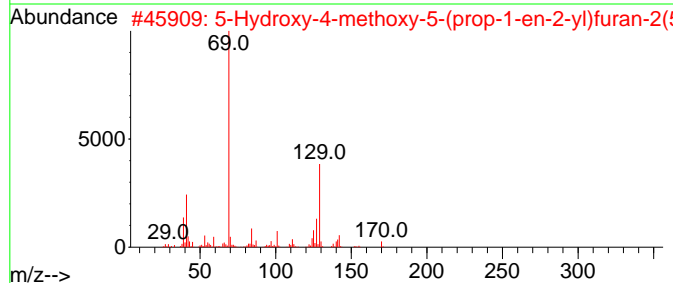
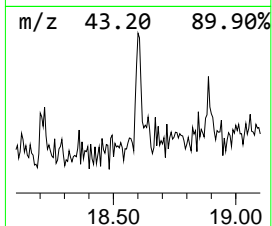
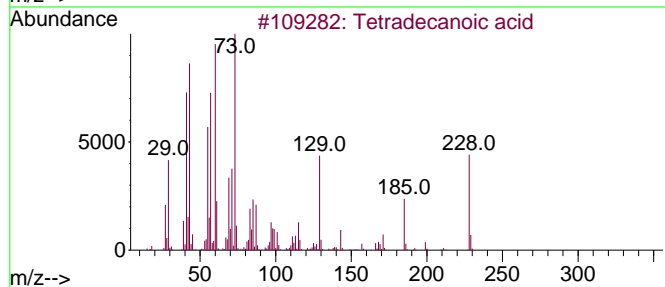
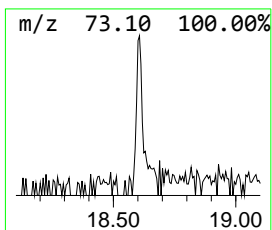
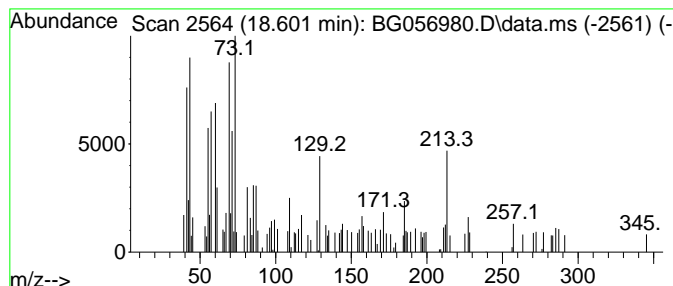
Quant Method : Z:\svoasrv\HPCHEM1\BNA\_G\Methods\8270-BG033023.M  
 Quant Title : ASP BNA STANDARDS FOR 5 POINT CALIBRATION

TIC Library : C:\Database\NIST20.L  
 TIC Integration Parameters: LSCINT.P

\*\*\*\*\*  
 Peak Number 2 unknown18.601 Concentration Rank 6

| R.T.   | EstConc | Area  | Relative to ISTD | R.T.   |
|--------|---------|-------|------------------|--------|
| 18.601 | 2.14 ng | 34194 | Phenanthrene-d10 | 17.766 |

| Hit# | of | 5 | Tentative ID                        | MW  | MolForm  | CAS#         | Qual |
|------|----|---|-------------------------------------|-----|----------|--------------|------|
| 1    |    |   | Tetradecanoic acid                  | 228 | C14H28O2 | 000544-63-8  | 35   |
| 2    |    |   | 5-Hydroxy-4-methoxy-5-(prop-1-en... | 170 | C8H10O4  | 017397-87-4  | 35   |
| 3    |    |   | Cyclopropanecarboxylic acid, 1-n... | 212 | C14H12O2 | 1000279-96-1 | 22   |
| 4    |    |   | Cyclohexanone, 2-(1-mercapto-1-m... | 186 | C10H18OS | 038462-22-5  | 18   |
| 5    |    |   | Ethanone, 1-(4,5-dihydro-2-thiaz... | 129 | C5H7NOS  | 029926-41-8  | 18   |



Data Path : Z:\svoasrv\HPCHEM1\BNA\_G\Data\BG040423\  
 Data File : BG056980.D  
 Acq On : 5 Apr 2023 1:09  
 Operator : CG/JU  
 Sample : 02170-01 2X  
 Misc :  
 ALS Vial : 15 Sample Multiplier: 1

Instrument :  
 BNA\_G  
 ClientSampleId :  
 EO-3-033123

Quant Method : Z:\svoasrv\HPCHEM1\BNA\_G\Methods\8270-BG033023.M  
 Quant Title : ASP BNA STANDARDS FOR 5 POINT CALIBRATION

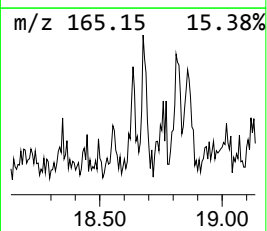
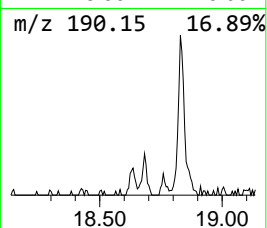
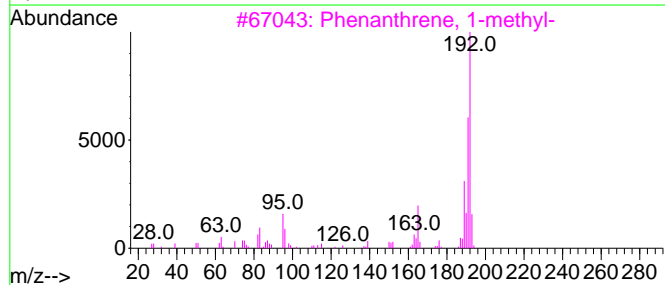
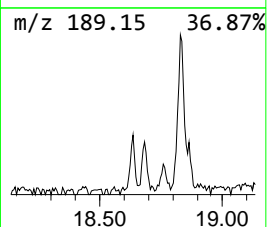
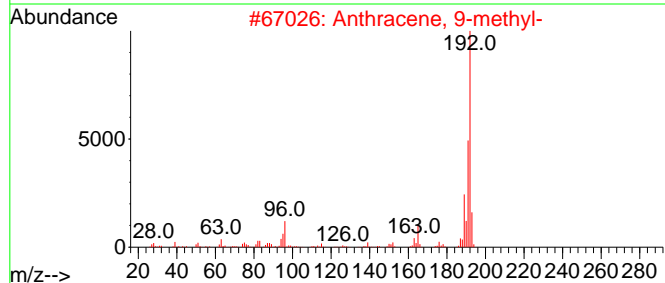
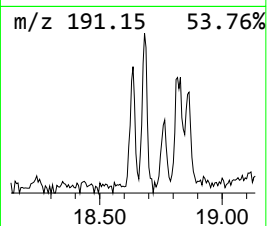
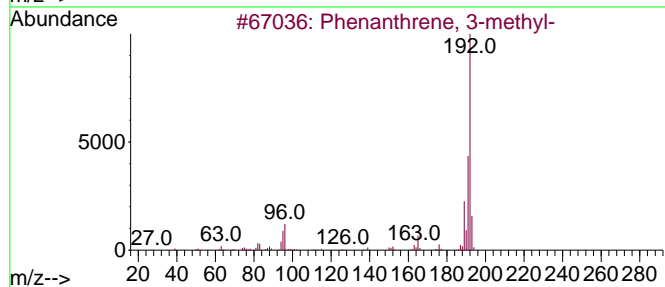
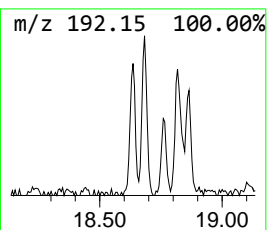
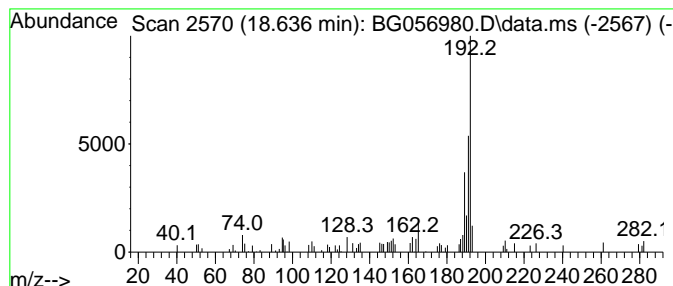
TIC Library : C:\Database\NIST20.L  
 TIC Integration Parameters: LSCINT.P

\*\*\*\*\*  
 Peak Number 3 Phenanthrene, 3-methyl- Concentration Rank 5

| R.T.   | EstConc | Area  | Relative to ISTD | R.T.   |
|--------|---------|-------|------------------|--------|
| 18.636 | 2.29 ng | 36506 | Phenanthrene-d10 | 17.766 |

| Hit# | of | Tentative ID            | MW  | MolForm | CAS#        | Qual |
|------|----|-------------------------|-----|---------|-------------|------|
| 1    | 5  | Phenanthrene, 3-methyl- | 192 | C15H12  | 000832-71-3 | 64   |
| 2    |    | Anthracene, 9-methyl-   | 192 | C15H12  | 000779-02-2 | 62   |
| 3    |    | Phenanthrene, 1-methyl- | 192 | C15H12  | 000832-69-9 | 62   |
| 4    |    | Anthracene, 2-methyl-   | 192 | C15H12  | 000613-12-7 | 62   |
| 5    |    | 1H-Indene, 2-phenyl-    | 192 | C15H12  | 004505-48-0 | 59   |



Data Path : Z:\svoasrv\HPCHEM1\BNA\_G\Data\BG040423\  
 Data File : BG056980.D  
 Acq On : 5 Apr 2023 1:09  
 Operator : CG/JU  
 Sample : 02170-01 2X  
 Misc :  
 ALS Vial : 15 Sample Multiplier: 1

Instrument :  
 BNA\_G  
 ClientSampleId :  
 EO-3-033123

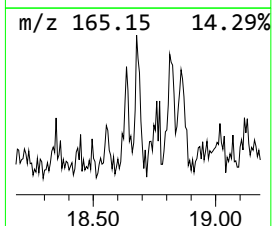
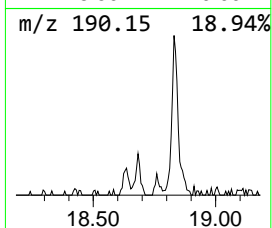
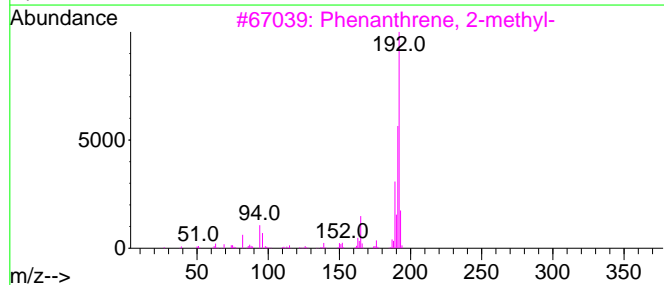
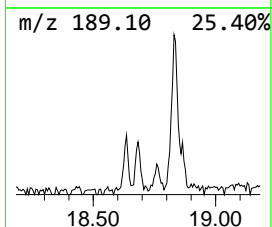
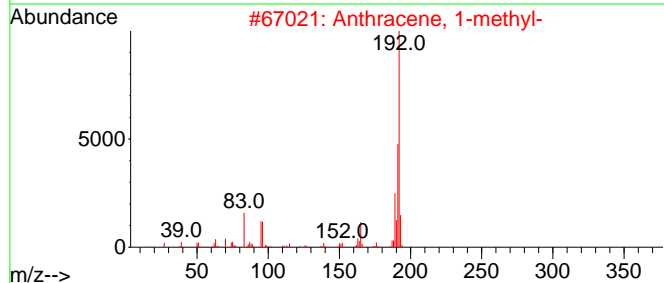
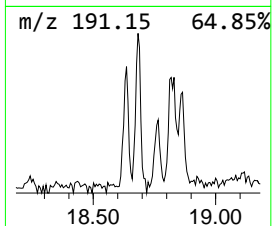
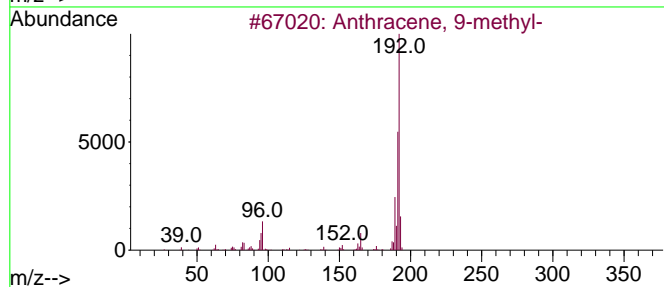
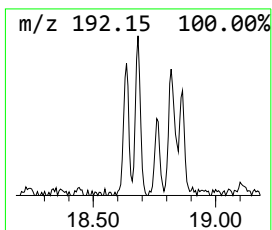
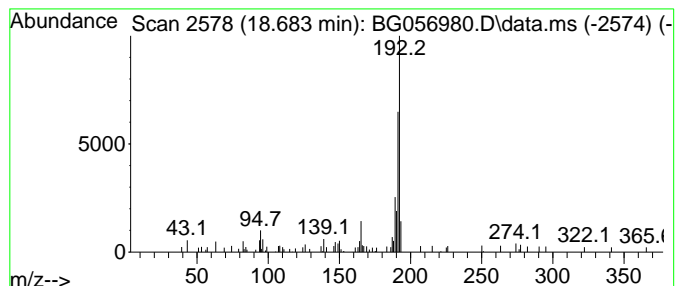
Quant Method : Z:\svoasrv\HPCHEM1\BNA\_G\Methods\8270-BG033023.M  
 Quant Title : ASP BNA STANDARDS FOR 5 POINT CALIBRATION

TIC Library : C:\Database\NIST20.L  
 TIC Integration Parameters: LSCINT.P

\*\*\*\*\*  
 Peak Number 4 Anthracene, 9-methyl- Concentration Rank 4

| R.T.   | EstConc | Area  | Relative to ISTD | R.T.   |
|--------|---------|-------|------------------|--------|
| 18.683 | 2.57 ng | 41110 | Phenanthrene-d10 | 17.766 |

| Hit# | of | 5 | Tentative ID            | MW  | MolForm | CAS#        | Qual |
|------|----|---|-------------------------|-----|---------|-------------|------|
| 1    |    |   | Anthracene, 9-methyl-   | 192 | C15H12  | 000779-02-2 | 87   |
| 2    |    |   | Anthracene, 1-methyl-   | 192 | C15H12  | 000610-48-0 | 83   |
| 3    |    |   | Phenanthrene, 2-methyl- | 192 | C15H12  | 002531-84-2 | 81   |
| 4    |    |   | Phenanthrene, 1-methyl- | 192 | C15H12  | 000832-69-9 | 74   |
| 5    |    |   | Phenanthrene, 4-methyl- | 192 | C15H12  | 000832-64-4 | 72   |



Data Path : Z:\svoasrv\HPCHEM1\BNA\_G\Data\BG040423\  
 Data File : BG056980.D  
 Acq On : 5 Apr 2023 1:09  
 Operator : CG/JU  
 Sample : 02170-01 2X  
 Misc :  
 ALS Vial : 15 Sample Multiplier: 1

Instrument :  
 BNA\_G  
 ClientSampleId :  
 EO-3-033123

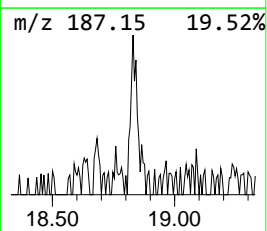
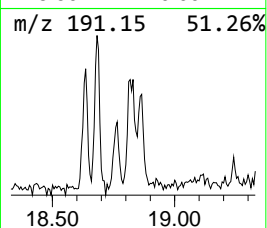
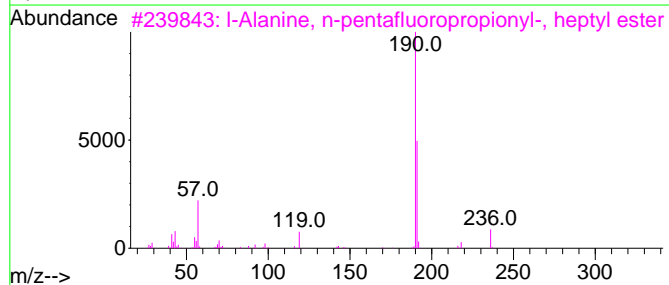
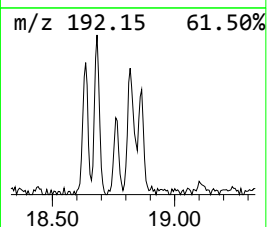
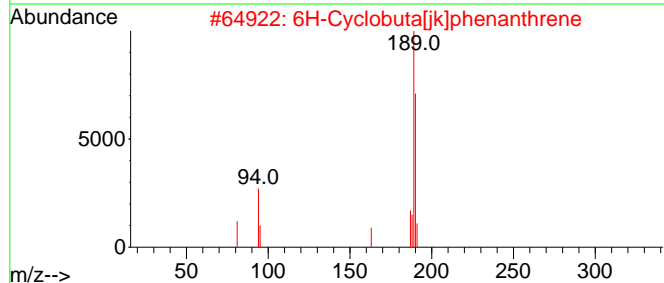
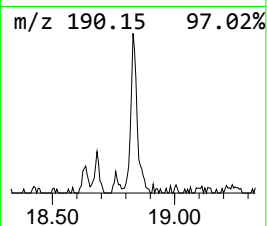
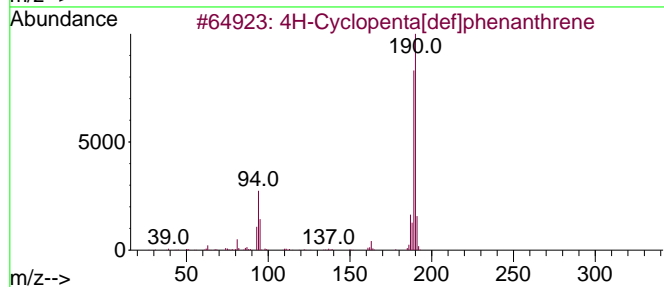
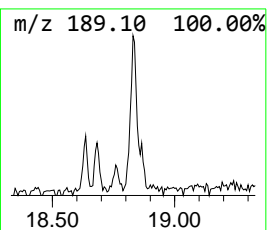
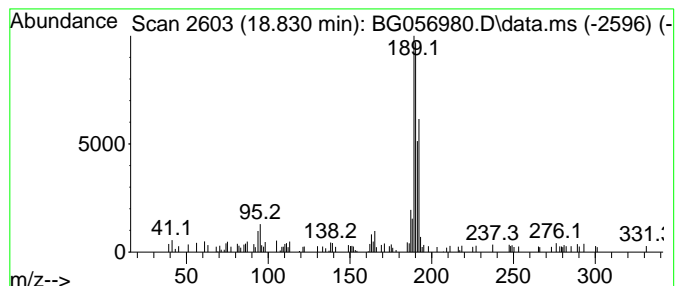
Quant Method : Z:\svoasrv\HPCHEM1\BNA\_G\Methods\8270-BG033023.M  
 Quant Title : ASP BNA STANDARDS FOR 5 POINT CALIBRATION

TIC Library : C:\Database\NIST20.L  
 TIC Integration Parameters: LSCINT.P

\*\*\*\*\*  
 Peak Number 5 4H-Cyclopenta[def]phenanthrene Concentration Rank 2

| R.T.   | EstConc | Area  | Relative to ISTD | R.T.   |
|--------|---------|-------|------------------|--------|
| 18.830 | 5.35 ng | 85519 | Phenanthrene-d10 | 17.766 |

| Hit# | of | 5 | Tentative ID                        | MW  | MolForm     | CAS#         | Qual |
|------|----|---|-------------------------------------|-----|-------------|--------------|------|
| 1    |    |   | 4H-Cyclopenta[def]phenanthrene      | 190 | C15H10      | 000203-64-5  | 58   |
| 2    |    |   | 6H-Cyclobuta[jk]phenanthrene        | 190 | C15H10      | 083469-43-6  | 52   |
| 3    |    |   | l-Alanine, n-pentafluoropropiony... | 333 | C13H20F5NO3 | 1010323-37-4 | 27   |
| 4    |    |   | 7-Methoxy-1,2,3-trimethylindole     | 189 | C12H15NO    | 053918-94-8  | 22   |
| 5    |    |   | 3-Chloropropionic acid, 2-bromo-... | 280 | C9H7BrClFO2 | 1000293-65-0 | 20   |





Data Path : Z:\svoasrv\HPCHEM1\BNA\_G\Data\BG040423\  
 Data File : BG056980.D  
 Acq On : 5 Apr 2023 1:09  
 Operator : CG/JU  
 Sample : 02170-01 2X  
 Misc :  
 ALS Vial : 15 Sample Multiplier: 1

Instrument :  
 BNA\_G  
 ClientSampleId :  
 EO-3-033123

Quant Method : Z:\svoasrv\HPCHEM1\BNA\_G\Methods\8270-BG033023.M  
 Quant Title : ASP BNA STANDARDS FOR 5 POINT CALIBRATION

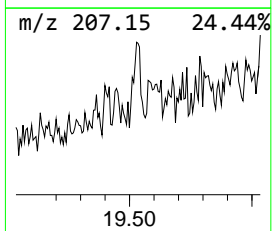
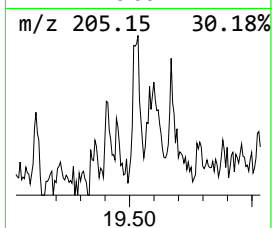
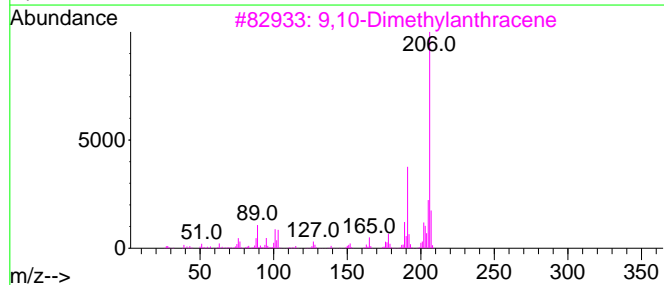
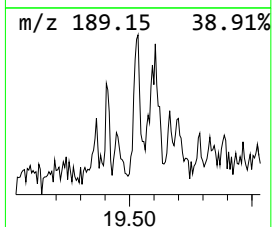
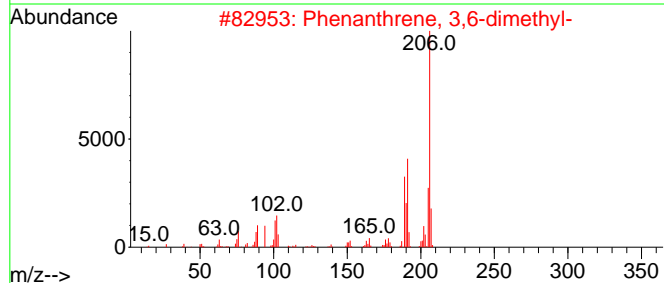
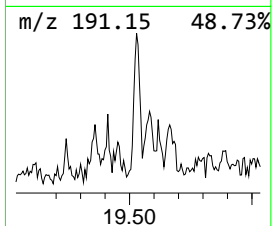
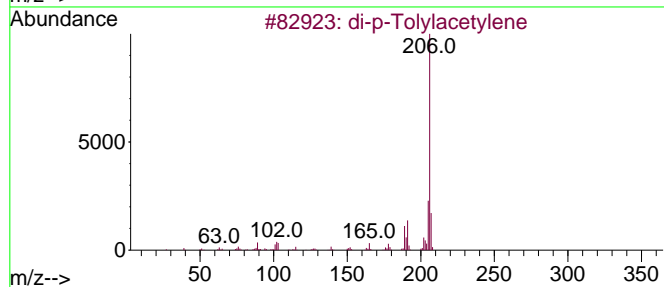
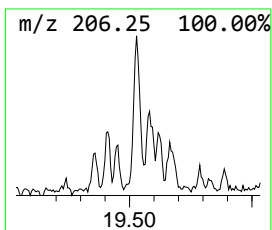
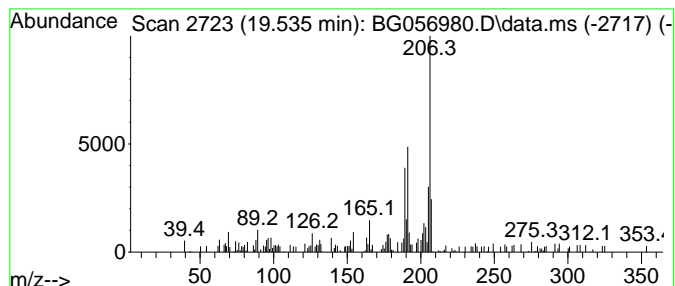
TIC Library : C:\Database\NIST20.L  
 TIC Integration Parameters: LSCINT.P

\*\*\*\*\*  
 Peak Number 6 di-p-Tolylacetylene Concentration Rank 3

| R.T.   | EstConc | Area  | Relative to ISTD | R.T.   |
|--------|---------|-------|------------------|--------|
| 19.535 | 4.45 ng | 71053 | Phenanthrene-d10 | 17.766 |

| Hit# | of 5 | Tentative ID                | MW  | MolForm | CAS#         | Qual |
|------|------|-----------------------------|-----|---------|--------------|------|
| 1    |      | di-p-Tolylacetylene         | 206 | C16H14  | 002789-88-0  | 91   |
| 2    |      | Phenanthrene, 3,6-dimethyl- | 206 | C16H14  | 001576-67-6  | 87   |
| 3    |      | 9,10-Dimethylantracene      | 206 | C16H14  | 000781-43-1  | 76   |
| 4    |      | 3,4-Dimethylphenanthrene    | 206 | C16H14  | 1000452-24-5 | 68   |
| 5    |      | Phenanthrene, 2,7-dimethyl- | 206 | C16H14  | 001576-69-8  | 64   |



Data Path : Z:\svoasrv\HPCHEM1\BNA\_G\Data\BG040423\  
 Data File : BG056980.D  
 Acq On : 5 Apr 2023 1:09  
 Operator : CG/JU  
 Sample : 02170-01 2X  
 Misc :  
 ALS Vial : 15 Sample Multiplier: 1

Instrument :  
 BNA\_G  
 ClientSampleId :  
 EO-3-033123

Quant Method : Z:\svoasrv\HPCHEM1\BNA\_G\Methods\8270-BG033023.M  
 Quant Title : ASP BNA STANDARDS FOR 5 POINT CALIBRATION

TIC Library : C:\Database\NIST0.L  
 TIC Integration Parameters: LSCINT.P

| TIC Top Hit name   | RT     | EstConc | Units | Response | --Internal Standard-- |        |        |      |
|--------------------|--------|---------|-------|----------|-----------------------|--------|--------|------|
|                    |        |         |       |          | #                     | RT     | Resp   | Conc |
| 2-Pentanone, 4-... | 5.442  | 9.5     | ng    | 66396    | 1                     | 8.414  | 139907 | 20.0 |
| unknown18.601      | 18.601 | 2.1     | ng    | 34194    | 4                     | 17.766 | 319411 | 20.0 |
| Phenanthrene, 3... | 18.636 | 2.3     | ng    | 36506    | 4                     | 17.766 | 319411 | 20.0 |
| Anthracene, 9-m... | 18.683 | 2.6     | ng    | 41110    | 4                     | 17.766 | 319411 | 20.0 |
| 4H-Cyclopenta[d... | 18.830 | 5.3     | ng    | 85519    | 4                     | 17.766 | 319411 | 20.0 |
| di-p-Tolylacety... | 19.535 | 4.5     | ng    | 71053    | 4                     | 17.766 | 319411 | 20.0 |