

Data Path : Z:\HPCHEM1\BNA G\DATA\BG040518\
 Data File : BG033597.D
 Acq On : 5 Apr 2018 17:56
 Operator : SJ/JU
 Sample : J2216-01
 Misc :
 ALS Vial : 8 Sample Multiplier: 1

Instrument :
 BNA_G
 ClientSampleId :
 QNWP8-MW25S-GW

Quant Time: Apr 06 03:29:13 2018
 Quant Method : Z:\HPCHEM1\BNA G\METHODS\8270-BG031918.M
 Quant Title : ASP BNA STANDARDS FOR 5 POINT CALIBRATION
 QLast Update : Thu Apr 05 17:36:07 2018
 Response via : Initial Calibration

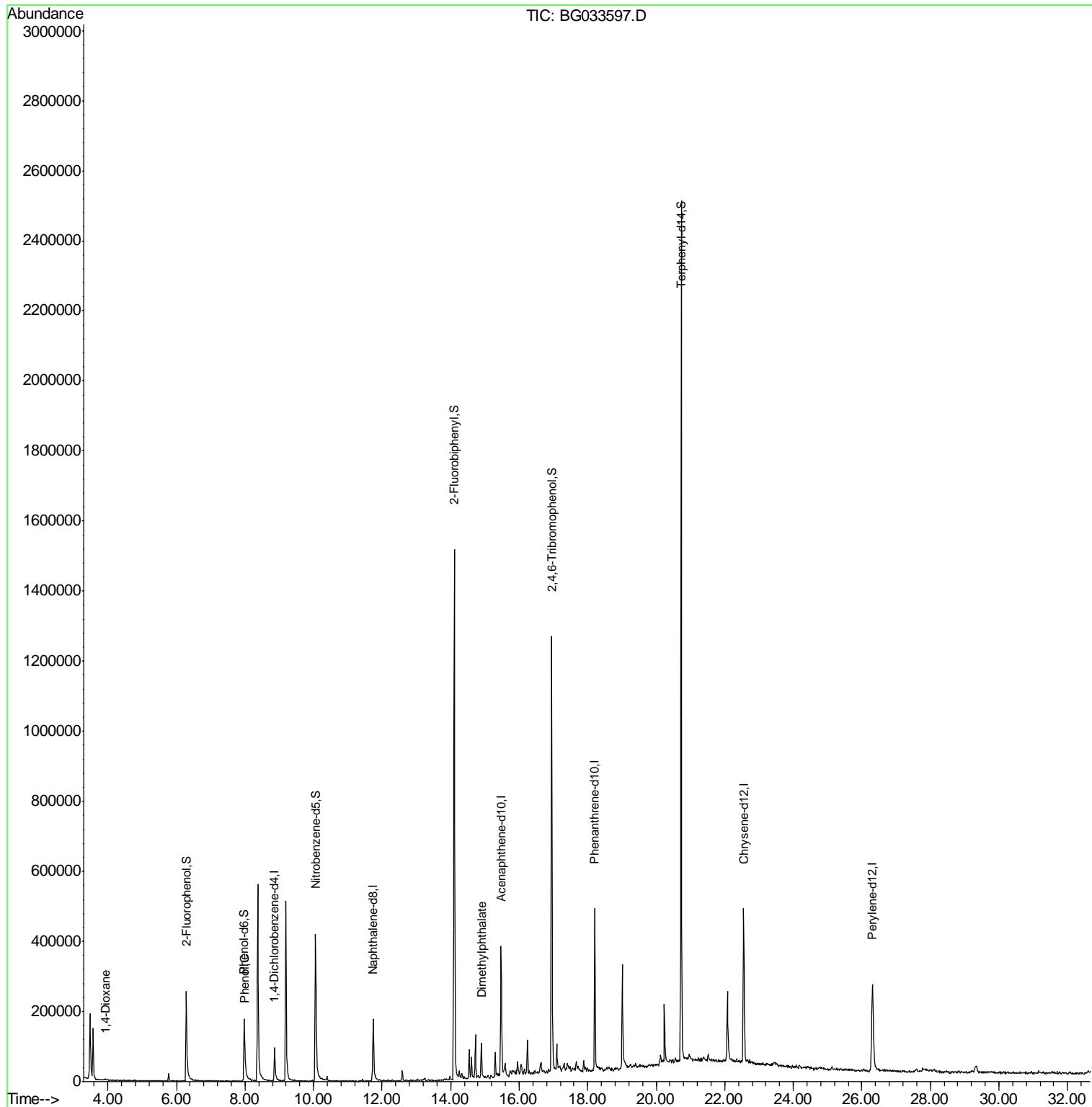
Internal Standards	R.T.	QIon	Response	Conc	Units	Dev(Min)
1) 1,4-Dichlorobenzene-d4	8.86	152	36364	20.00	ng	0.00
21) Naphthalene-d8	11.74	136	180647	20.00	ng	0.00
38) Acenaphthene-d10	15.47	164	141427	20.00	ng	0.00
63) Phenanthrene-d10	18.21	188	326320	20.00	ng	0.00
75) Chrysene-d12	22.55	240	325008	20.00	ng	0.00
86) Perylene-d12	26.31	264	339796	20.00	ng	-0.01
System Monitoring Compounds						
5) 2-Fluorophenol	6.29	112	145027	74.78	ng	0.00
7) Phenol-d6	7.98	99	147063	44.14	ng	0.00
23) Nitrobenzene-d5	10.06	82	330316	84.01	ng	0.00
41) 2,4,6-Tribromophenol	16.95	330	235116	111.16	ng	0.00
44) 2-Fluorobiphenyl	14.10	172	848563	86.62	ng	0.00
78) Terphenyl-d14	20.73	244	1202488	79.13	ng	0.00
Target Compounds						
2) 1,4-Dioxane	3.93	88	2262	2.297	ng	Qvalue # 81
10) Phenol	8.00	94	15359	4.669	ng	83
49) Dimethylphthalate	14.90	163	64517	5.242	ng	98

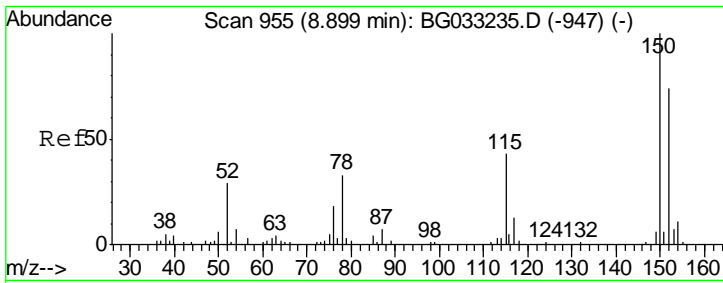
(#) = qualifier out of range (m) = manual integration (+) = signals summed

Data Path : Z:\HPCHEM1\BNA G\DATA\BG040518\
 Data File : BG033597.D
 Acq On : 5 Apr 2018 17:56
 Operator : SJ/JU
 Sample : J2216-01
 Misc :
 ALS Vial : 8 Sample Multiplier: 1

Instrument :
 BNA_G
 ClientSampleId :
 QNWP8-MW25S-GW

Quant Time: Apr 06 03:29:13 2018
 Quant Method : Z:\HPCHEM1\BNA G\METHODS\8270-BG031918.M
 Quant Title : ASP BNA STANDARDS FOR 5 POINT CALIBRATION
 QLast Update : Thu Apr 05 17:36:07 2018
 Response via : Initial Calibration

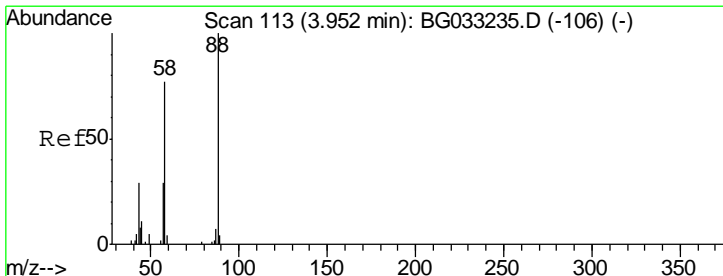
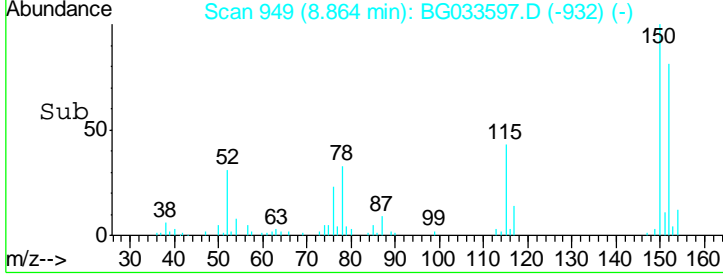
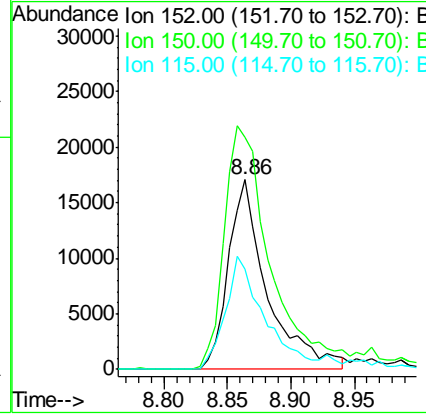
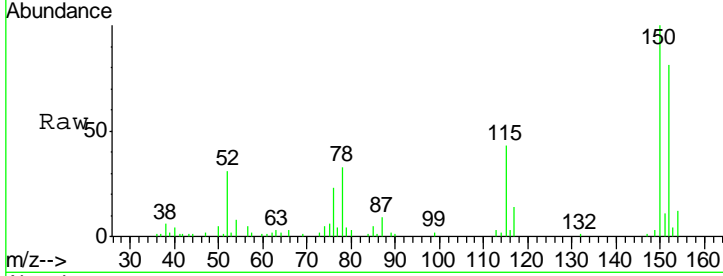




#1
 1,4-Dichlorobenzene-d4
 Concen: 20.000 ng
 RT: 8.86 min Scan# 949
 Delta R.T. 0.00 min
 Lab File: BG033597.D
 Acq: 5 Apr 2018 17:56

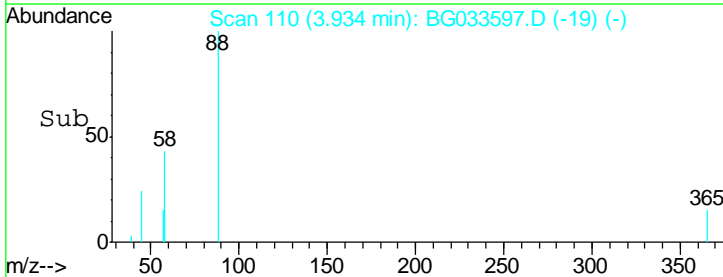
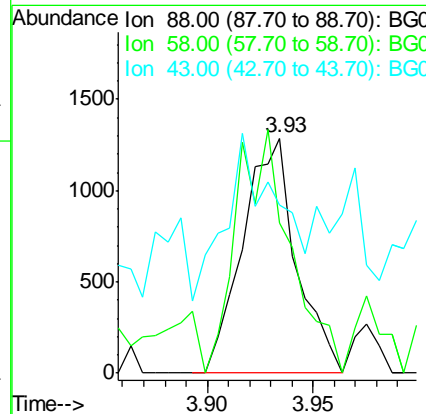
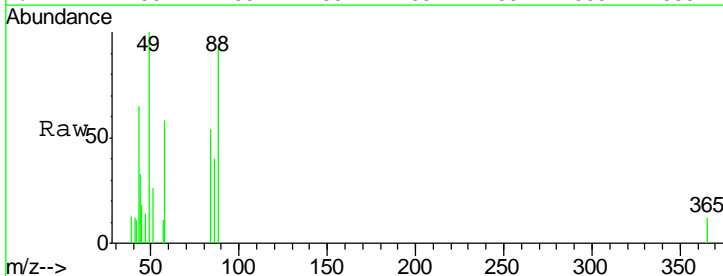
Instrument :
 BNA_G
 ClientSampleId :
 QNWP8-MW25S-GW

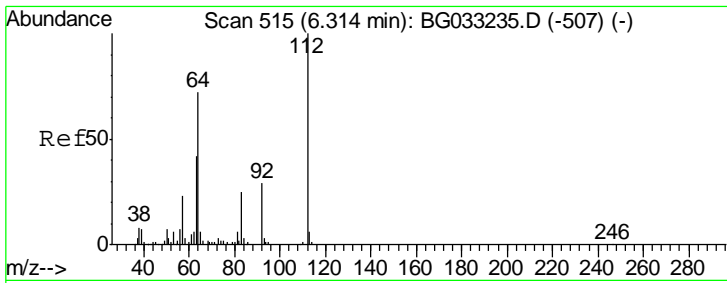
Tgt Ion	Resp	Lower	Upper
152	100		
150	122.7	126.6	189.8#
115	53.2	53.0	79.4



#2
 1,4-Dioxane
 Concen: 2.297 ng
 RT: 3.93 min Scan# 110
 Delta R.T. 0.01 min
 Lab File: BG033597.D
 Acq: 5 Apr 2018 17:56

Tgt Ion	Resp	Lower	Upper
88	100		
58	104.3	79.6	119.4
43	68.7	27.4	41.0#

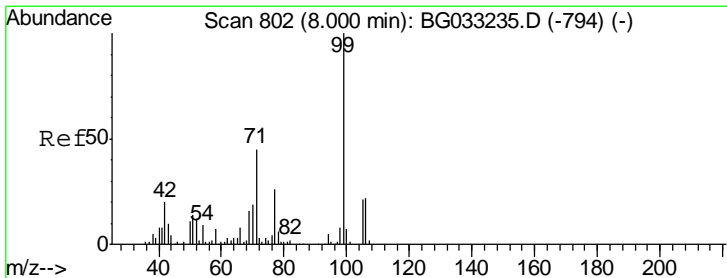
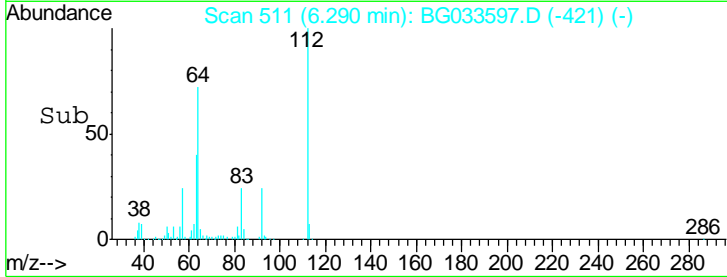
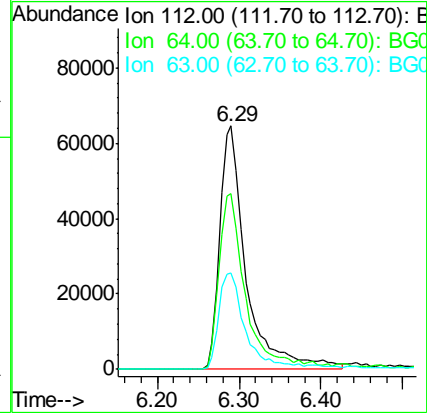
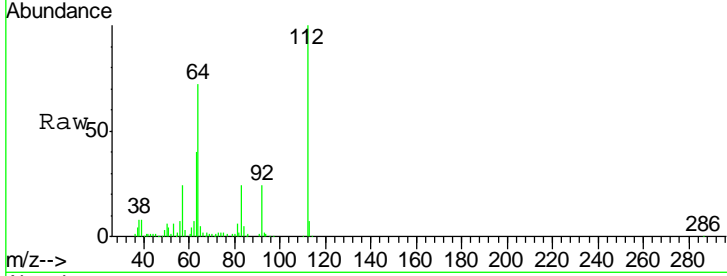




#5
 2-Fluorophenol
 Concen: 74.784 ng
 RT: 6.29 min Scan# 511
 Delta R.T. 0.00 min
 Lab File: BG033597.D
 Acq: 5 Apr 2018 17:56

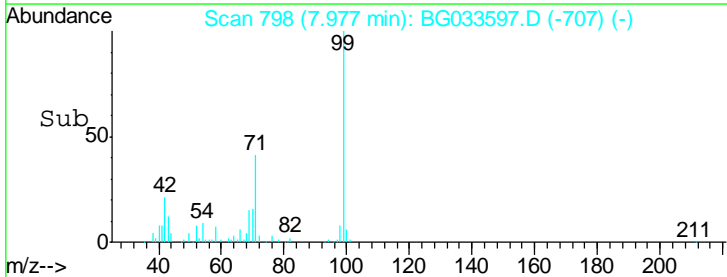
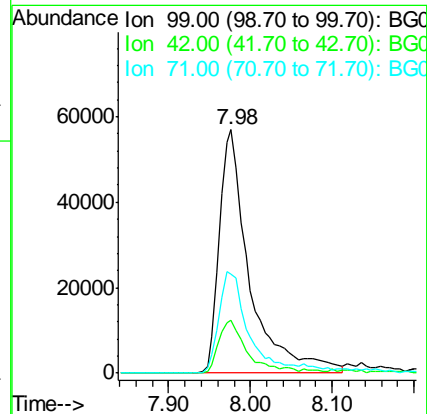
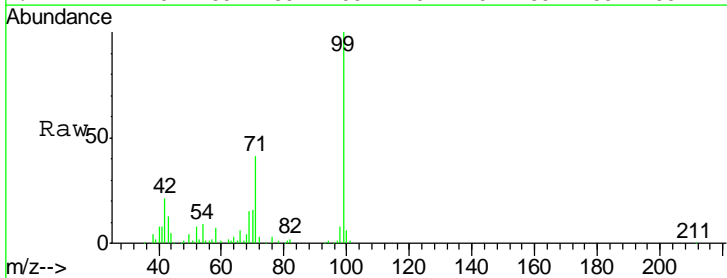
Instrument :
 BNA_G
 ClientSampleId :
 QNWP8-MW25S-GW

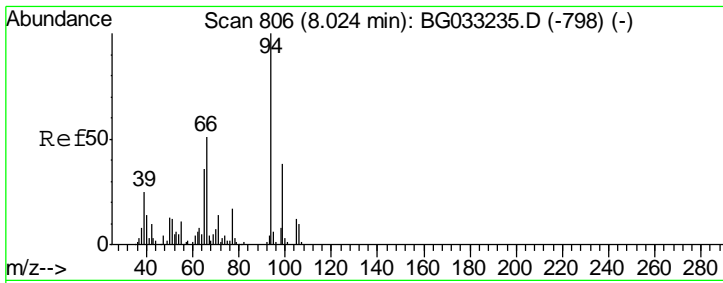
Tgt Ion	Resp	Lower	Upper
112	145027		
64	72.2	56.3	84.5
63	39.5	30.1	45.1



#7
 Phenol-d6
 Concen: 44.135 ng
 RT: 7.98 min Scan# 798
 Delta R.T. 0.01 min
 Lab File: BG033597.D
 Acq: 5 Apr 2018 17:56

Tgt Ion	Resp	Lower	Upper
99	147063		
42	21.5	14.1	21.1#
71	40.9	26.1	39.1#

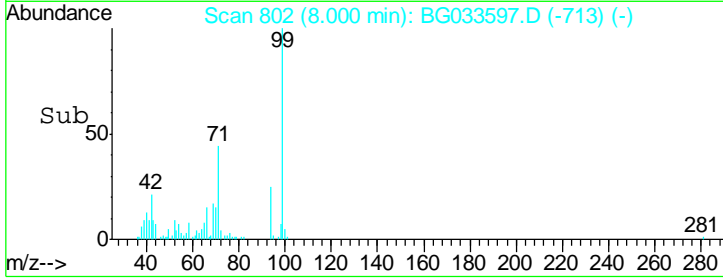
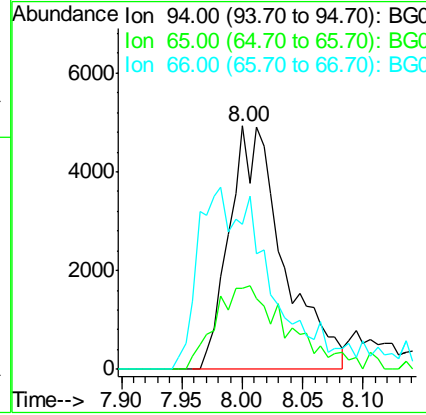
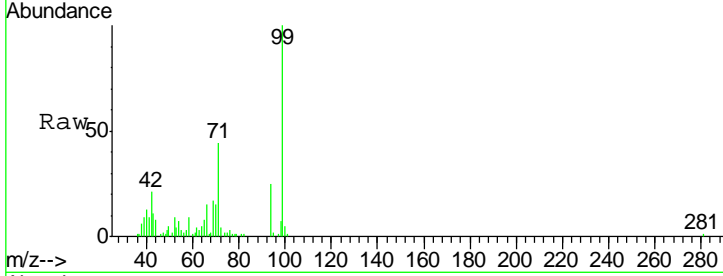




#10
 Phenol
 Concen: 4.669 ng
 RT: 8.00 min Scan# 802
 Delta R.T. -0.01 min
 Lab File: BG033597.D
 Acq: 5 Apr 2018 17:56

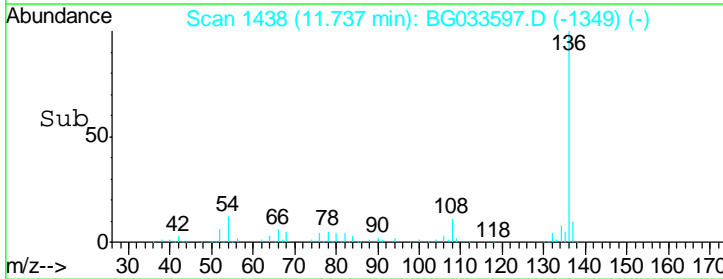
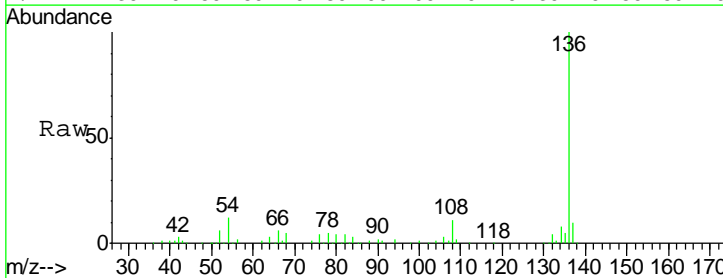
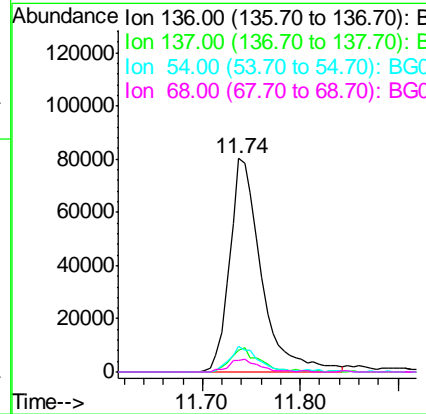
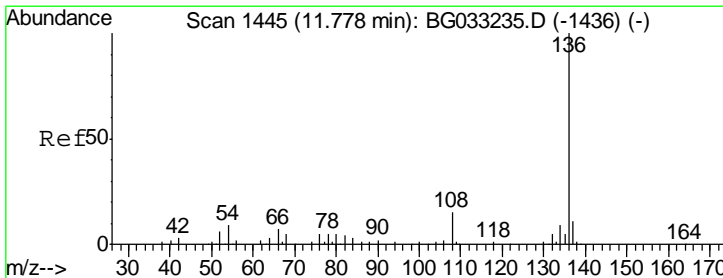
Instrument :
 BNA_G
 ClientSampleId :
 QNWP8-MW25S-GW

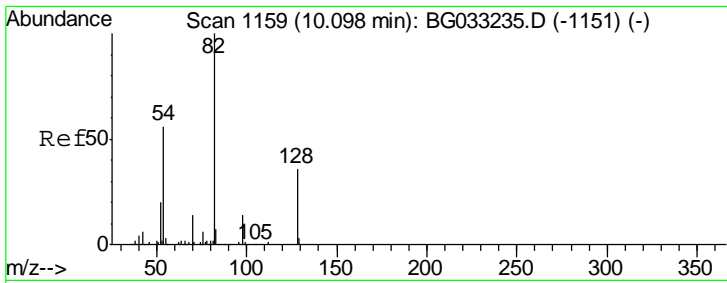
Tgt Ion	Resp	Lower	Upper
94	15359		
65	33.4	11.9	51.9
66	59.4	22.2	62.2



#21
 Naphthalene-d8
 Concen: 20.000 ng
 RT: 11.74 min Scan# 1438
 Delta R.T. -0.01 min
 Lab File: BG033597.D
 Acq: 5 Apr 2018 17:56

Tgt Ion	Resp	Lower	Upper
136	180647		
137	10.2	9.2	13.8
54	12.2	10.3	15.5
68	5.4	4.5	6.7

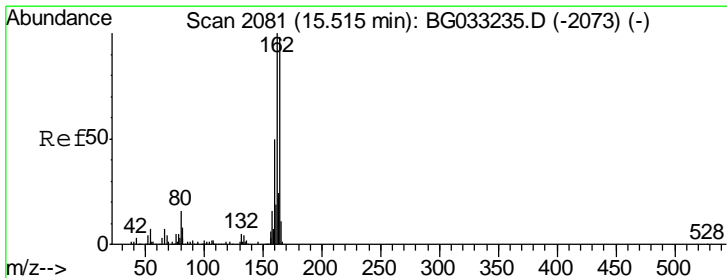
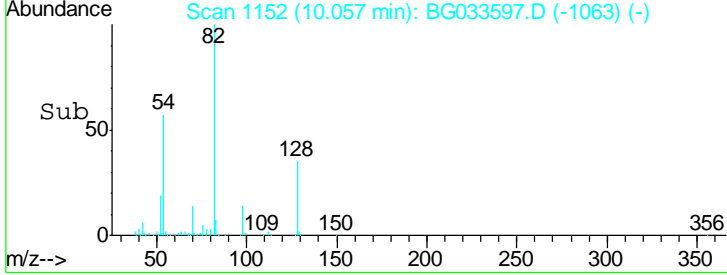
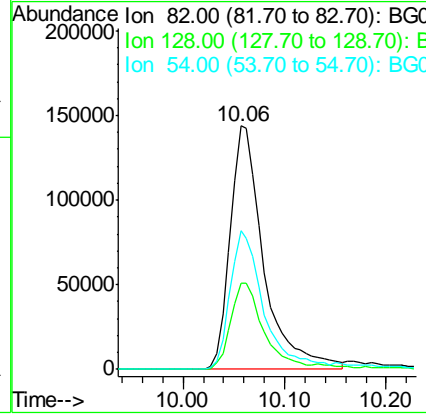
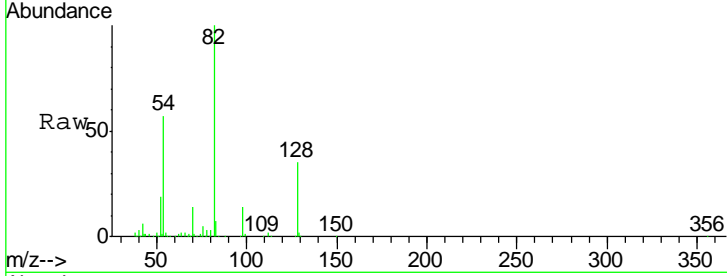




#23
 Nitrobenzene-d5
 Concen: 84.009 ng
 RT: 10.06 min Scan# 1152
 Delta R.T. -0.01 min
 Lab File: BG033597.D
 Acq: 5 Apr 2018 17:56

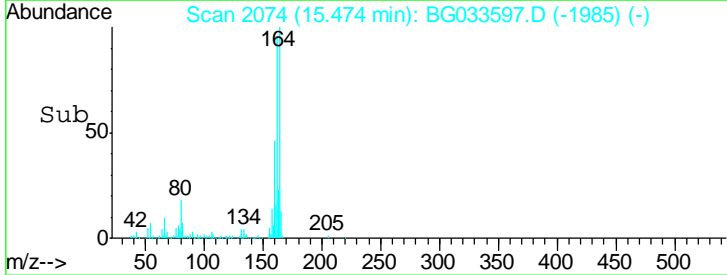
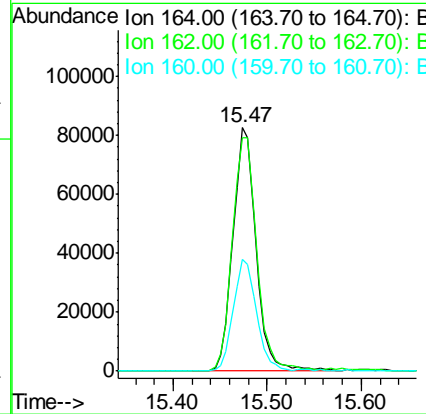
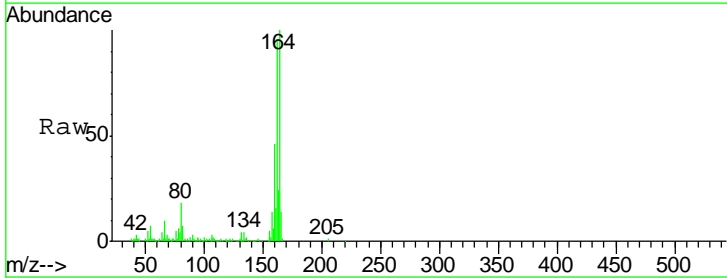
Instrument :
 BNA_G
 ClientSampleId :
 QNWP8-MW25S-GW

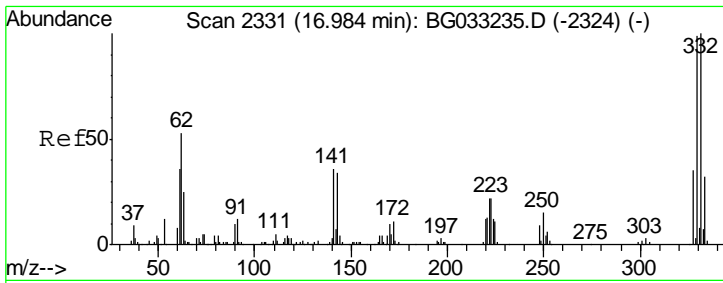
Tgt Ion	Resp	Lower	Upper
82	330316		
128	35.1	29.7	44.5
54	56.9	43.1	64.7



#38
 Acenaphthene-d10
 Concen: 20.000 ng
 RT: 15.47 min Scan# 2074
 Delta R.T. -0.01 min
 Lab File: BG033597.D
 Acq: 5 Apr 2018 17:56

Tgt Ion	Resp	Lower	Upper
164	141427		
162	95.6	78.8	118.2
160	46.1	35.4	53.0

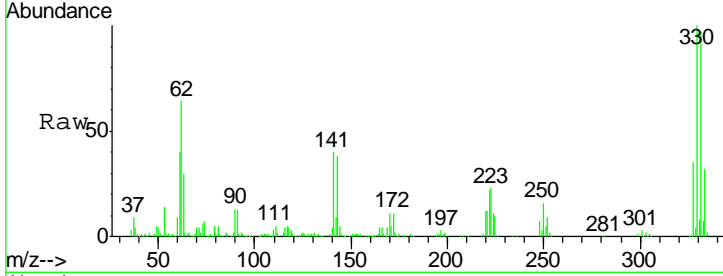




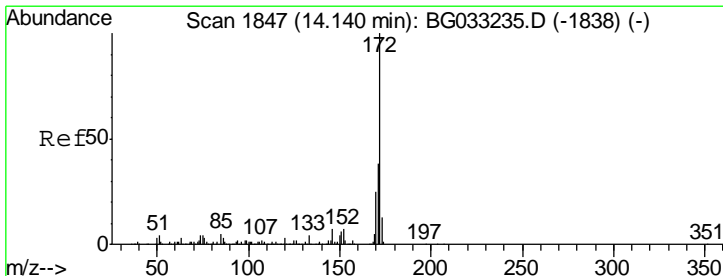
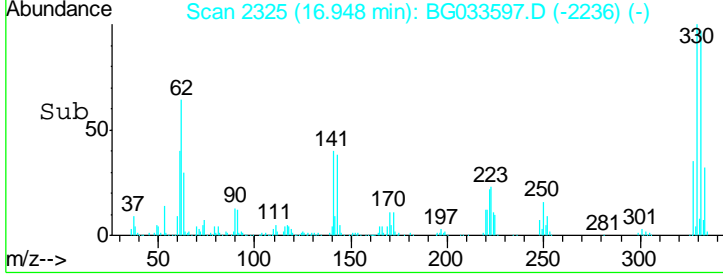
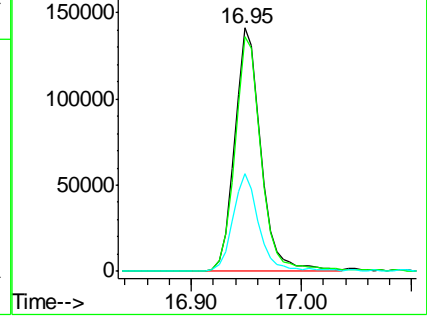
#41
 2,4,6-Tribromophenol
 Concen: 111.155 ng
 RT: 16.95 min Scan# 2325
 Delta R.T. -0.01 min
 Lab File: BG033597.D
 Acq: 5 Apr 2018 17:56

Instrument :
 BNA_G
 ClientSampleId :
 QNWP8-MW25S-GW

Tgt Ion	Resp	Lower	Upper
330	100		
332	97.0	77.0	115.6
141	40.7	25.2	37.8#

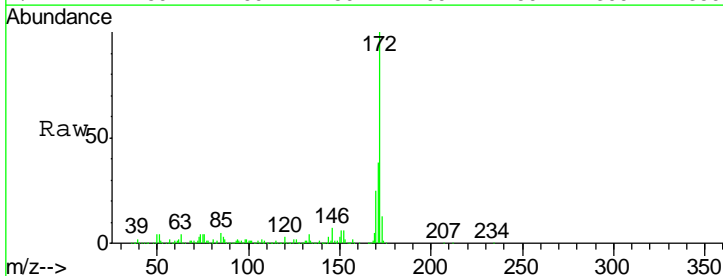


Abundance Ion 329.80 (329.50 to 330.50): E
 Ion 331.80 (331.50 to 332.50): E
 Ion 141.00 (140.70 to 141.70): E

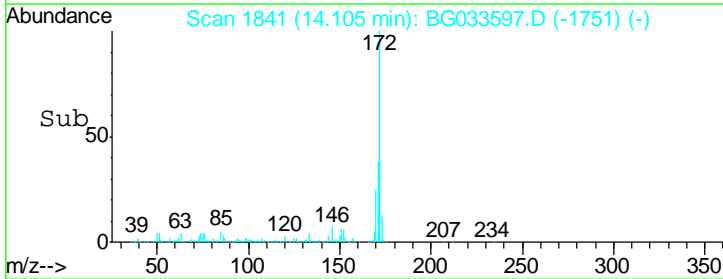
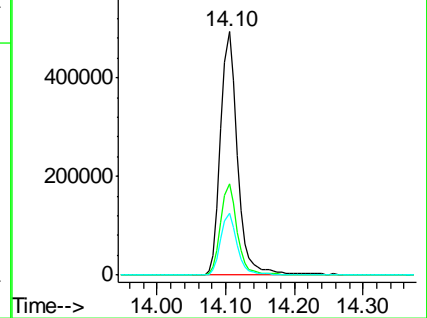


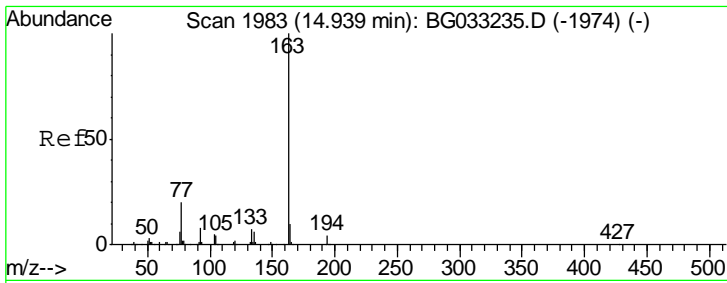
#44
 2-Fluorobiphenyl
 Concen: 86.618 ng
 RT: 14.10 min Scan# 1841
 Delta R.T. 0.00 min
 Lab File: BG033597.D
 Acq: 5 Apr 2018 17:56

Tgt Ion	Resp	Lower	Upper
172	100		
171	37.6	30.0	45.0
170	25.4	19.5	29.3



Abundance Ion 172.00 (171.70 to 172.70): E
 Ion 171.00 (170.70 to 171.70): E
 Ion 170.00 (169.70 to 170.70): E

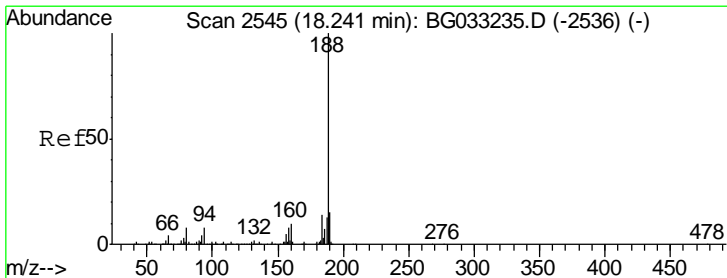
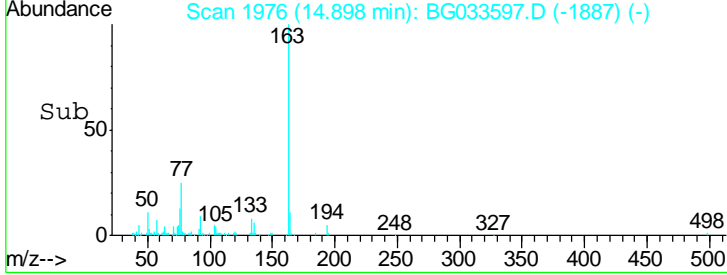
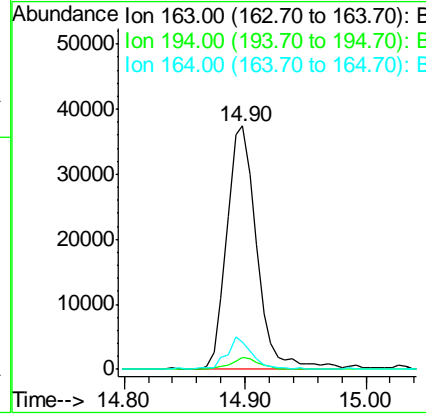
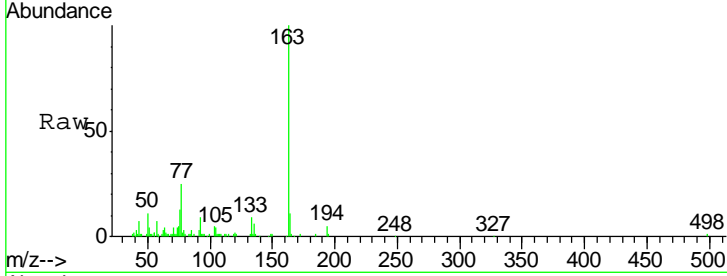




#49
 Dimethylphthalate
 Concen: 5.242 ng
 RT: 14.90 min Scan# 1976
 Delta R.T. -0.01 min
 Lab File: BG033597.D
 Acq: 5 Apr 2018 17:56

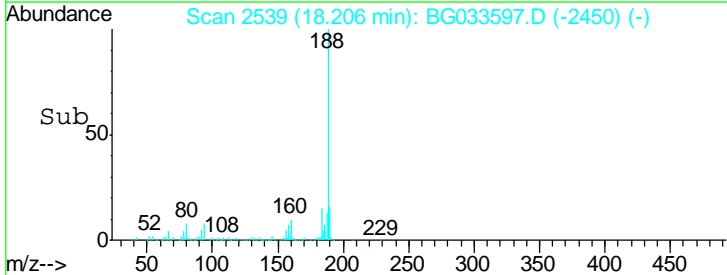
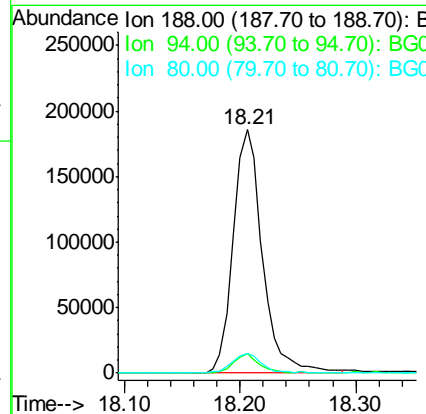
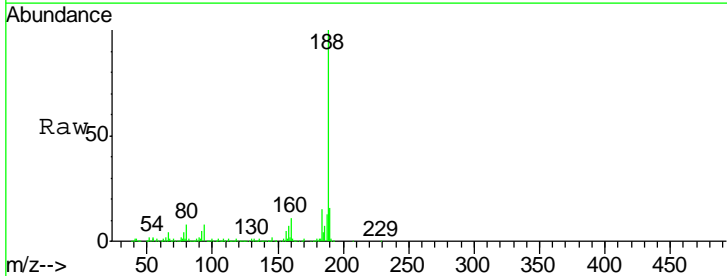
Instrument :
 BNA_G
 ClientSampleId :
 QNWP8-MW25S-GW

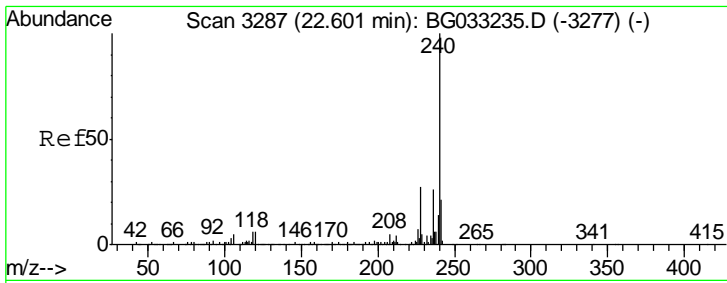
Tgt Ion	Resp	Lower	Upper
163	100		
194	4.7	3.4	5.2
164	11.0	8.2	12.4



#63
 Phenanthrene-d10
 Concen: 20.000 ng
 RT: 18.21 min Scan# 2539
 Delta R.T. -0.01 min
 Lab File: BG033597.D
 Acq: 5 Apr 2018 17:56

Tgt Ion	Resp	Lower	Upper
188	100		
94	7.9	6.9	10.3
80	8.1	7.7	11.5

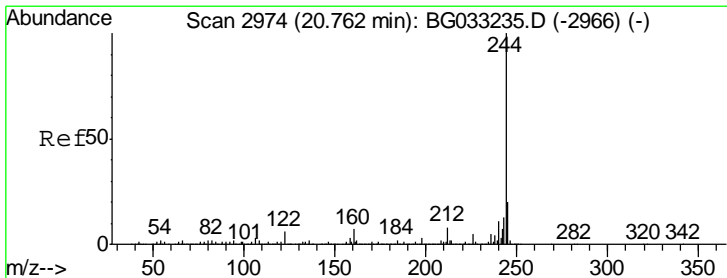
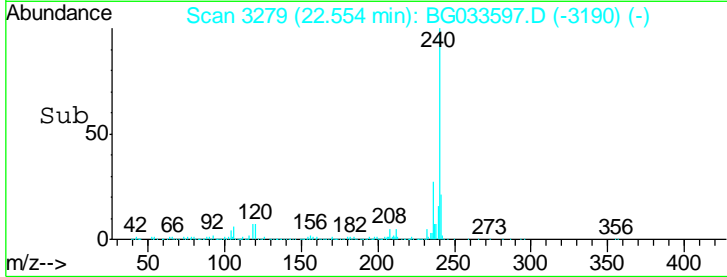
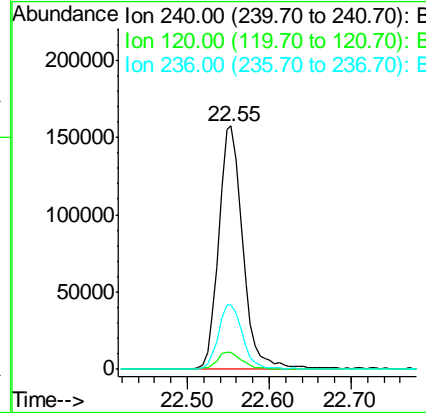
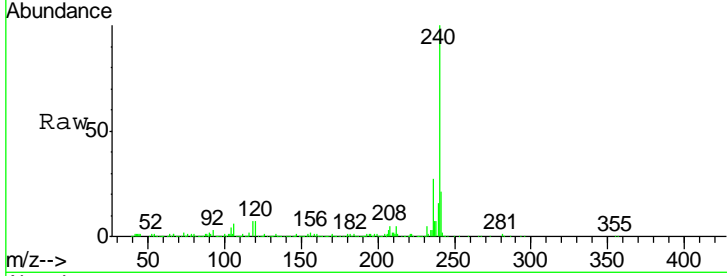




#75
 Chrysene-d12
 Concen: 20.000 ng
 RT: 22.55 min Scan# 3279
 Delta R.T. -0.01 min
 Lab File: BG033597.D
 Acq: 5 Apr 2018 17:56

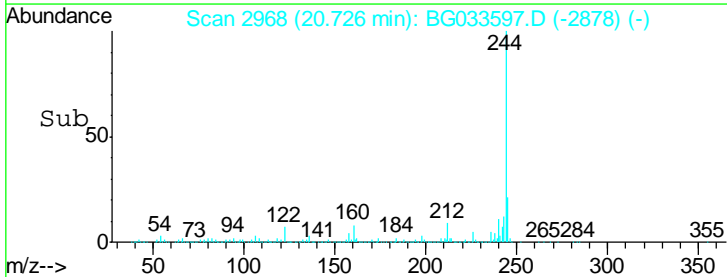
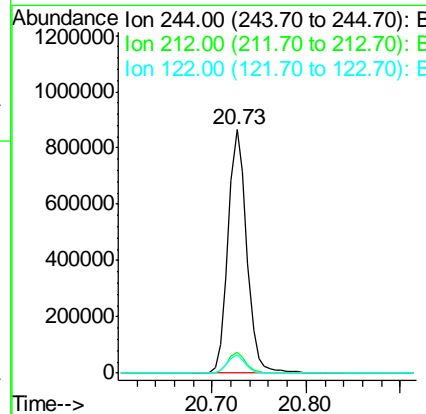
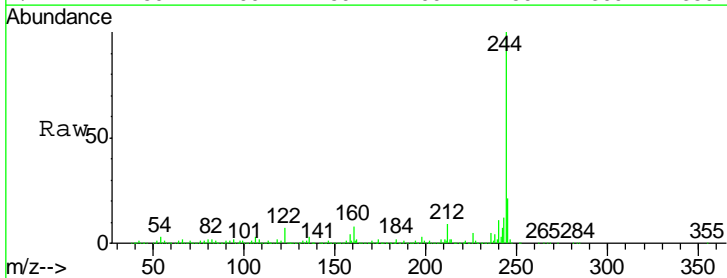
Instrument :
 BNA_G
 ClientSampleId :
 QNWP8-MW25S-GW

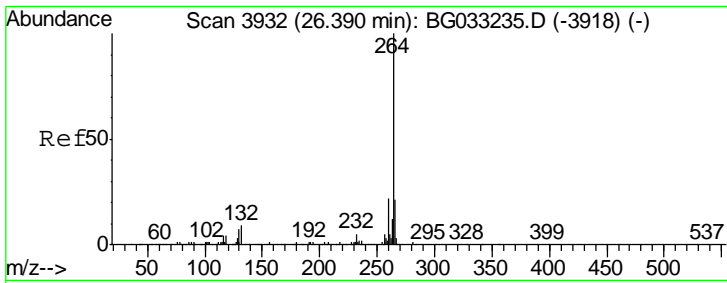
Tgt Ion	Resp	Lower	Upper
240	325008		
120	7.0	6.8	10.2
236	26.6	20.9	31.3



#78
 Terphenyl-d14
 Concen: 79.126 ng
 RT: 20.73 min Scan# 2968
 Delta R.T. 0.00 min
 Lab File: BG033597.D
 Acq: 5 Apr 2018 17:56

Tgt Ion	Resp	Lower	Upper
244	1202488		
212	8.7	5.8	8.8
122	7.5	7.0	10.4





#86
 Perylene-d12
 Concen: 20.000 ng
 RT: 26.31 min Scan# 3918
 Delta R.T. -0.01 min
 Lab File: BG033597.D
 Acq: 5 Apr 2018 17:56

Instrument :
 BNA_G
 ClientSampleId :
 QNWP8-MW25S-GW

Tot Ion: 264 Resp: 339796

Ion	Ratio	Lower	Upper
264	100		
260	24.1	17.4	26.0
265	22.1	17.7	26.5

