

Data Path : Z:\HPCHEM1\BNA G\DATA\BG040618\
 Data File : BG033658.D
 Acq On : 7 Apr 2018 9:55
 Operator : SJ/JU
 Sample : J2225-03
 Misc :
 ALS Vial : 29 Sample Multiplier: 1

Instrument :
 BNA_G
 ClientSampleId :
 040218-DBRI-F-D-B

Integration Parameters: rteint.p
 Integrator: RTE
 Smoothing : ON Filtering: 5
 Sampling : 1 Min Area: 3 % of largest Peak
 Start Thrs: 0.2 Max Peaks: 100
 Stop Thrs : 0 Peak Location: TOP

If leading or trailing edge < 100 prefer < Baseline drop else tangent >
 Peak separation: 5

Method : Z:\HPCHEM1\BNA G\METHODS\8270-BG031918.M
 Title : ASP BNA STANDARDS FOR 5 POINT CALIBRATION

Signal : TIC

peak #	R.T. min	first scan	max scan	last scan	PK TY	peak height	corr. area	corr. % max.	% of total
1	3.479	26	32	41	rBV	145441	286399	7.92%	1.918%
2	3.567	42	47	58	rVB	121362	200502	5.54%	1.342%
3	5.771	415	422	431	rBV	40975	69891	1.93%	0.468%
4	6.288	504	510	523	rBV	138594	304055	8.40%	2.036%
5	7.974	790	797	814	rBV2	81644	241672	6.68%	1.618%
6	8.373	858	865	883	rBV	307291	695062	19.21%	4.654%
7	8.861	942	948	959	rBV	84286	196330	5.43%	1.314%
8	9.190	997	1004	1021	rBV	469999	948130	26.21%	6.348%
9	10.060	1144	1152	1170	rBV	380856	905833	25.04%	6.065%
10	11.740	1431	1438	1454	rBV	147150	333405	9.22%	2.232%
11	14.102	1828	1840	1860	rBV	1368286	2391784	66.11%	16.014%
12	14.895	1966	1975	1988	rBV	77896	135729	3.75%	0.909%
13	15.301	2037	2044	2051	rBV2	37889	54689	1.51%	0.366%
14	15.477	2068	2074	2088	rVB2	316052	560210	15.48%	3.751%
15	16.241	2199	2204	2210	rVB	61587	78233	2.16%	0.524%
16	16.952	2317	2325	2343	rBV	691670	1237016	34.19%	8.282%
17	17.093	2345	2349	2358	rVB	51210	82363	2.28%	0.551%
18	18.209	2531	2539	2551	rBV	410687	726966	20.09%	4.867%
19	19.008	2670	2675	2680	rBV4	40749	67784	1.87%	0.454%
20	20.730	2962	2968	2978	rBV	2578005	3617838	100.00%	24.222%
21	22.075	3191	3197	3212	rBV3	86645	212538	5.87%	1.423%
22	22.551	3271	3278	3291	rBV2	400893	810558	22.40%	5.427%
23	24.413	3590	3595	3603	rVB3	26658	54872	1.52%	0.367%
24	26.317	3908	3919	3935	rBV	206481	724187	20.02%	4.849%

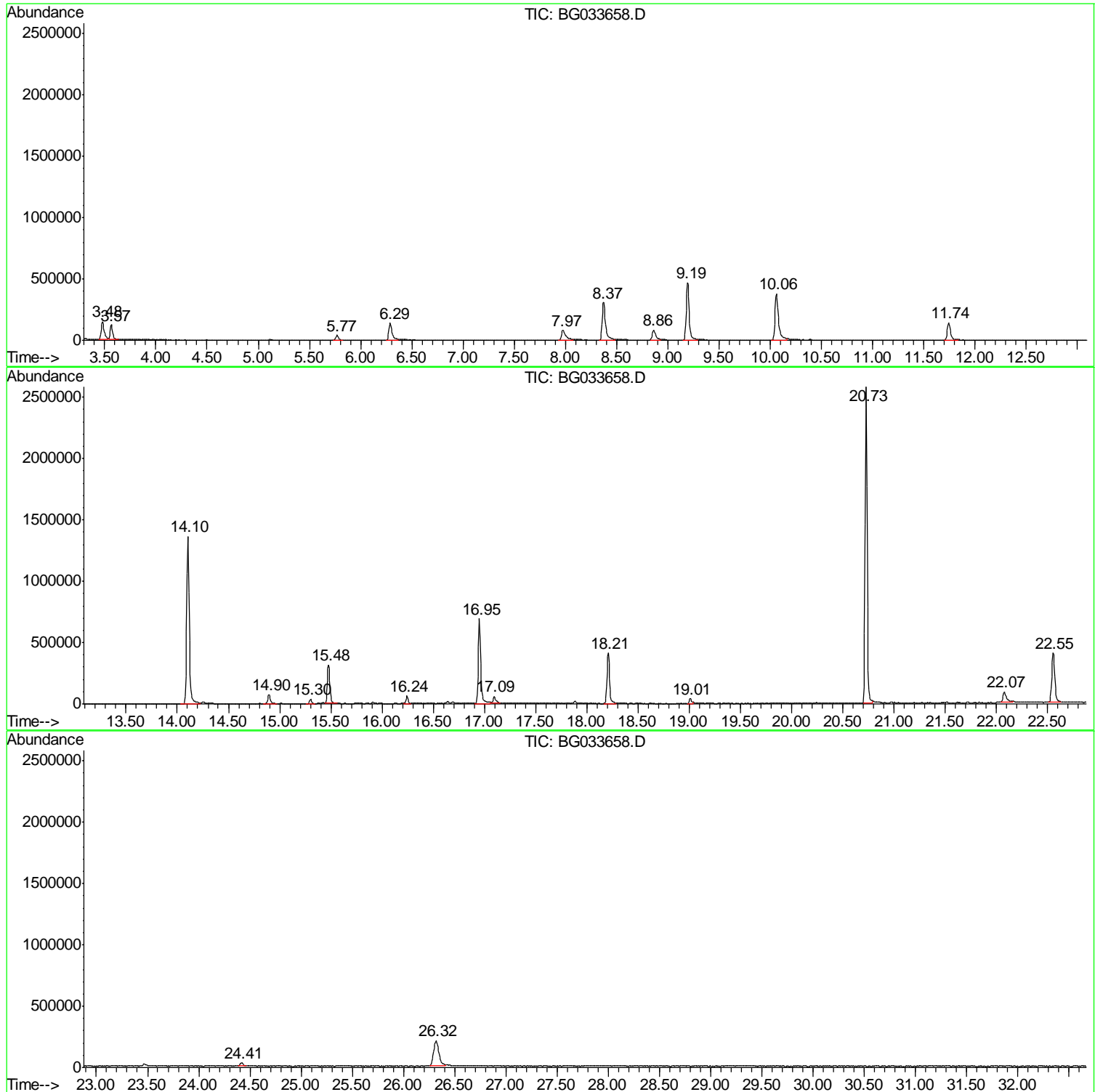
Sum of corrected areas: 14936046

Data Path : Z:\HPCHEM1\BNA G\DATA\BG040618\
Data File : BG033658.D
Acq On : 7 Apr 2018 9:55
Operator : SJ/JU
Sample : J2225-03
Misc :
ALS Vial : 29 Sample Multiplier: 1

Instrument :
BNA_G
ClientSampleId :
040218-DBRI-F-D-B

Quant Method : Z:\HPCHEM1\BNA G\METHODS\8270-BG031918.M
Quant Title : ASP BNA STANDARDS FOR 5 POINT CALIBRATION

TIC Library : C:\Database\NIST11.L
TIC Integration Parameters: LSCINT.P



Data Path : Z:\HPCHEM1\BNA G\DATA\BG040618\
 Data File : BG033658.D
 Acq On : 7 Apr 2018 9:55
 Operator : SJ/JU
 Sample : J2225-03
 Misc :
 ALS Vial : 29 Sample Multiplier: 1

Instrument :
 BNA_G
 ClientSampleId :
 040218-DBRI-F-D-B

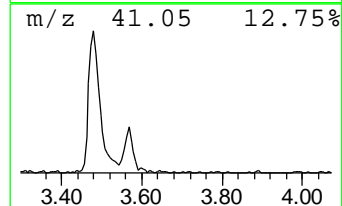
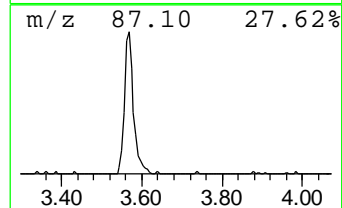
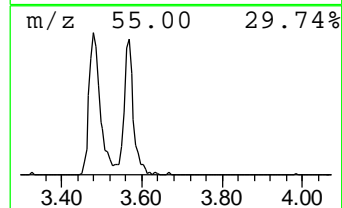
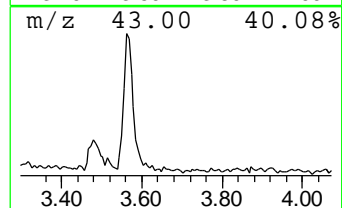
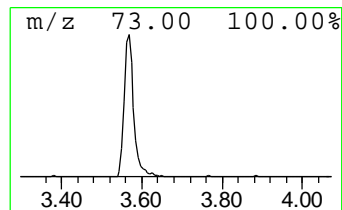
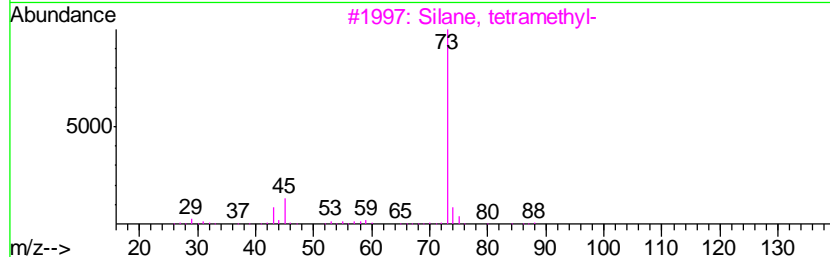
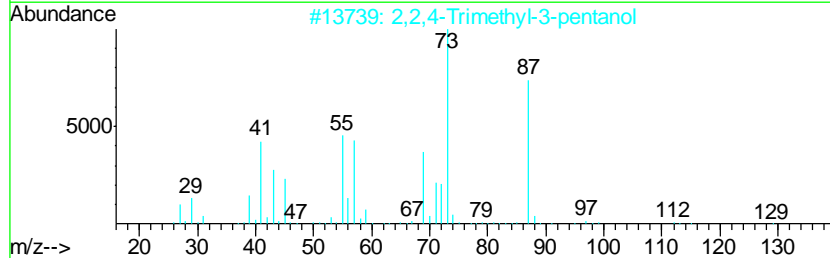
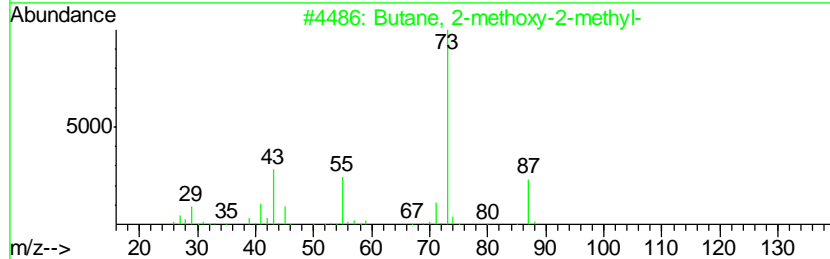
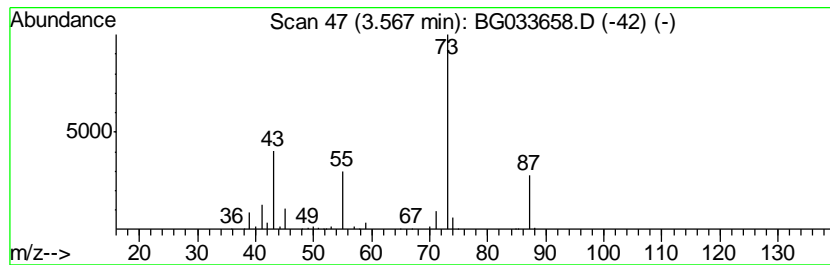
Quant Method : Z:\HPCHEM1\BNA G\METHODS\8270-BG031918.M
 Quant Title : ASP BNA STANDARDS FOR 5 POINT CALIBRATION

TIC Library : C:\Database\NIST11.L
 TIC Integration Parameters: LSCINT.P

 Peak Number 2 Butane, 2-methoxy-2-methyl- Concentration Rank 4

R.T.	EstConc	Area	Relative to ISTD	R.T.
3.57	20.43 ng	200502	1,4-Dichlorobenzene-d4	8.86

Hit#	of	Tentative ID	MW	MolForm	CAS#	Qual
1	5	Butane, 2-methoxy-2-methyl-	102	C6H14O	000994-05-8	78
2		2,2,4-Trimethyl-3-pentanol	130	C8H18O	005162-48-1	40
3		Silane, tetramethyl-	88	C4H12Si	000075-76-3	38
4		1,3-Dioxolane, 2-methyl-	88	C4H8O2	000497-26-7	9
5		N-Ethylformamide	73	C3H7NO	000627-45-2	9



Data Path : Z:\HPCHEM1\BNA G\DATA\BG040618\
 Data File : BG033658.D
 Acq On : 7 Apr 2018 9:55
 Operator : SJ/JU
 Sample : J2225-03
 Misc :
 ALS Vial : 29 Sample Multiplier: 1

Instrument :
 BNA_G
 ClientSampleID :
 040218-DBRI-F-D-B

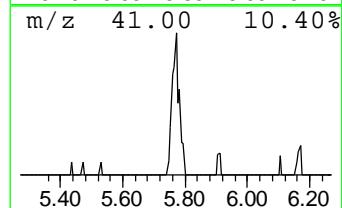
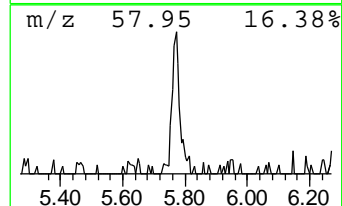
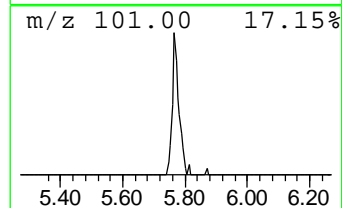
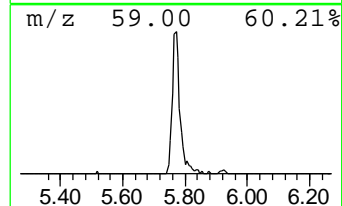
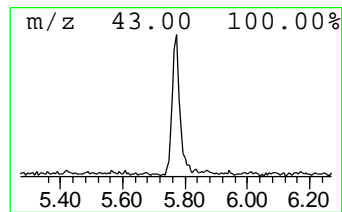
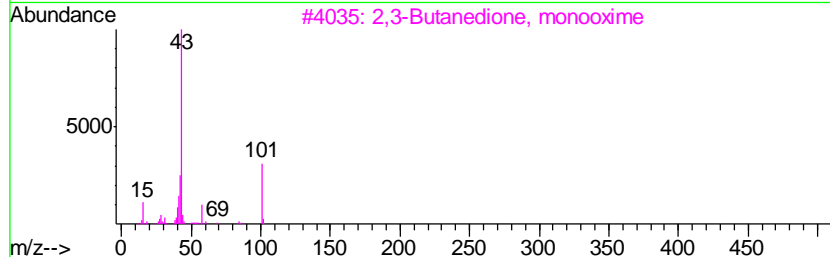
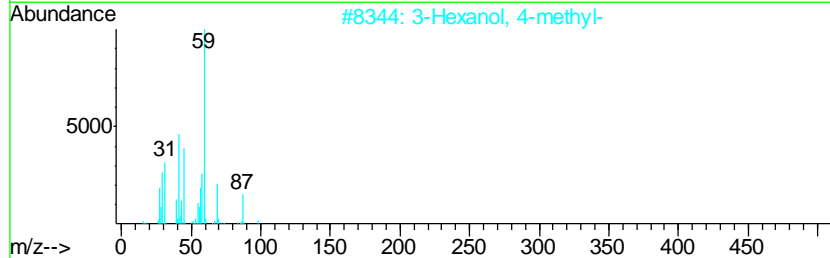
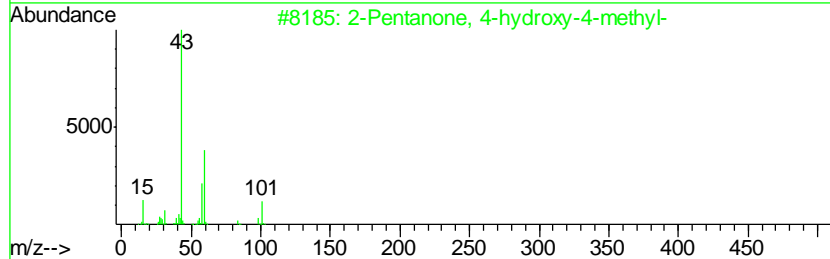
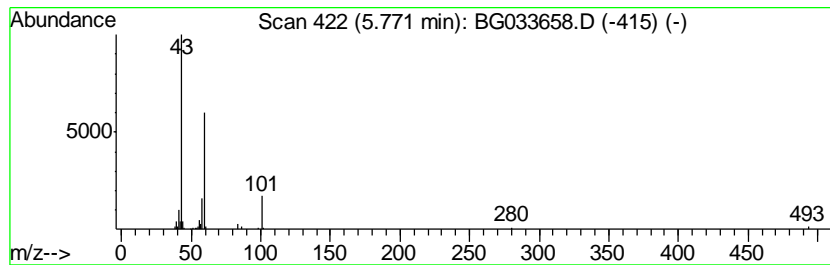
Quant Method : Z:\HPCHEM1\BNA G\METHODS\8270-BG031918.M
 Quant Title : ASP BNA STANDARDS FOR 5 POINT CALIBRATION

TIC Library : C:\Database\NIST11.L
 TIC Integration Parameters: LSCINT.P

 Peak Number 3 2-Pentanone, 4-hydroxy-4-me... Concentration Rank 5

R.T.	EstConc	Area	Relative to ISTD	R.T.
5.77	7.12 ng	69891	1,4-Dichlorobenzene-d4	8.86

Hit#	of	Tentative ID	MW	MolForm	CAS#	Qual
1	5	2-Pentanone, 4-hydroxy-4-methyl-	116	C6H12O2	000123-42-2	59
2		3-Hexanol, 4-methyl-	116	C7H16O	000615-29-2	38
3		2,3-Butanedione, monooxime	101	C4H7NO2	000057-71-6	38
4		1,8-Nonanediol, 8-methyl-	174	C10H22O2	054725-73-4	32
5		Propane, 2-methyl-2-(1-methyleth...	116	C7H16O	017348-59-3	28



Data Path : Z:\HPCHEM1\BNA G\DATA\BG040618\
 Data File : BG033658.D
 Acq On : 7 Apr 2018 9:55
 Operator : SJ/JU
 Sample : J2225-03
 Misc :
 ALS Vial : 29 Sample Multiplier: 1

Instrument :
 BNA_G
 ClientSampleId :
 040218-DBRI-F-D-B

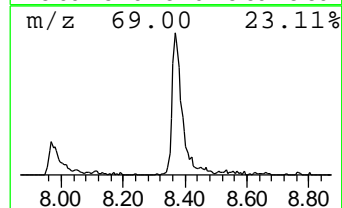
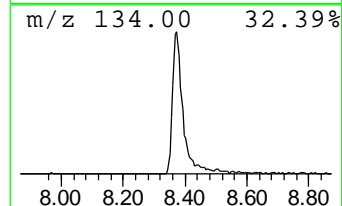
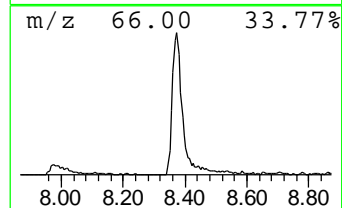
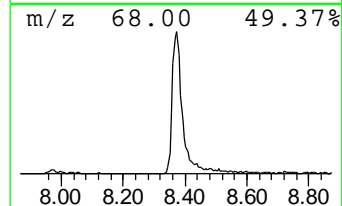
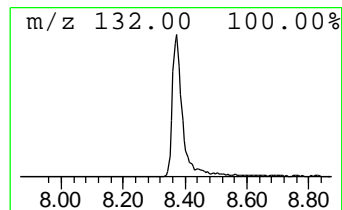
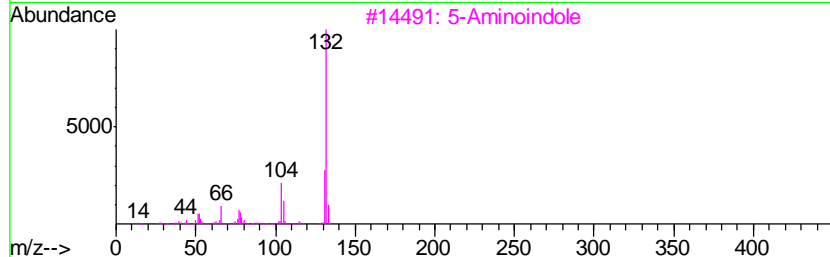
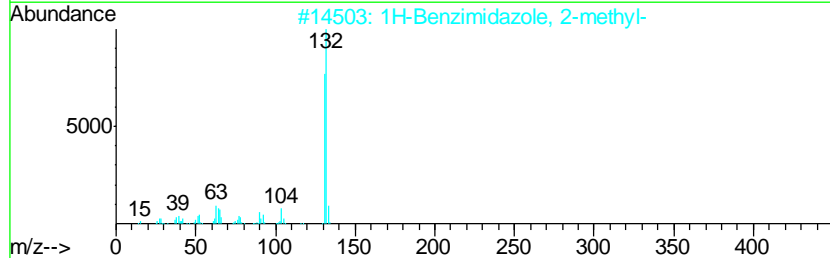
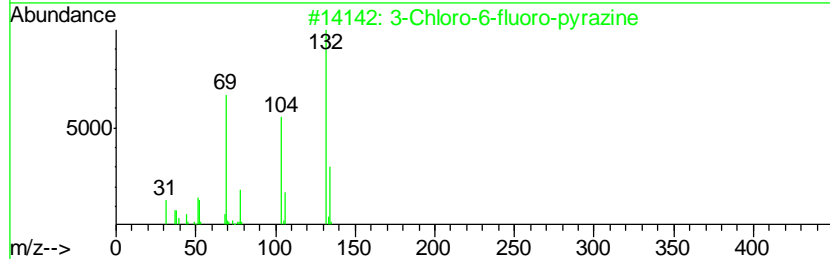
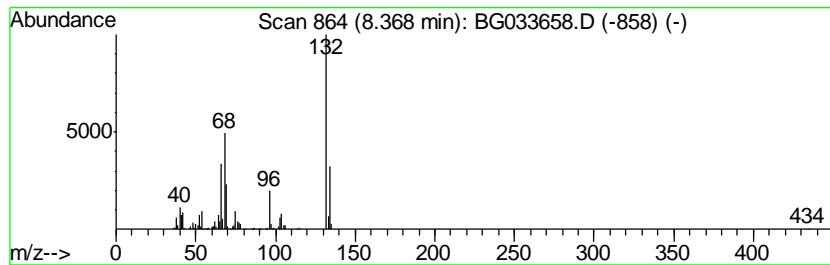
Quant Method : Z:\HPCHEM1\BNA G\METHODS\8270-BG031918.M
 Quant Title : ASP BNA STANDARDS FOR 5 POINT CALIBRATION

TIC Library : C:\Database\NIST11.L
 TIC Integration Parameters: LSCINT.P

 Peak Number 4 unknown8.37 Concentration Rank 2

R.T.	EstConc	Area	Relative to ISTD	R.T.
8.37	70.81 ng	695062	1,4-Dichlorobenzene-d4	8.86

Hit#	of	Tentative ID	MW	MolForm	CAS#	Qual
1	5	3-Chloro-6-fluoro-pyrazine	132	C4H2ClFN2	1000146-10-7	27
2		1H-Benzimidazole, 2-methyl-	132	C8H8N2	000615-15-6	22
3		5-Aminoindole	132	C8H8N2	005192-03-0	22
4		1H-Tetrazaborole, 5-chloro-4,5-d...	132	C2H6BClN4	021960-49-6	16
5		5-Fluoro-2-chloropyrimidine	132	C4H2ClFN2	062802-42-0	12



Data Path : Z:\HPCHEM1\BNA G\DATA\BG040618\
 Data File : BG033658.D
 Acq On : 7 Apr 2018 9:55
 Operator : SJ/JU
 Sample : J2225-03
 Misc :
 ALS Vial : 29 Sample Multiplier: 1

Instrument :
 BNA_G
 ClientSampleID :
 040218-DBRI-F-D-B

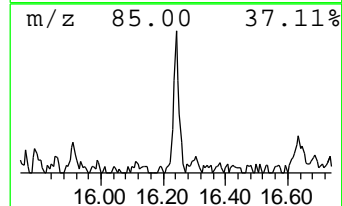
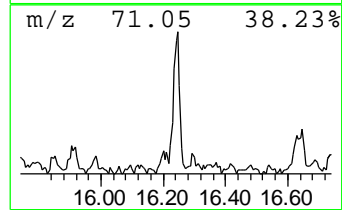
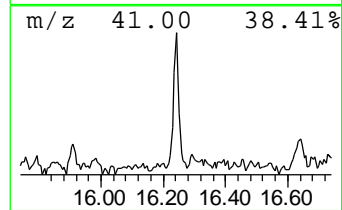
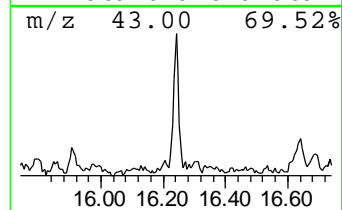
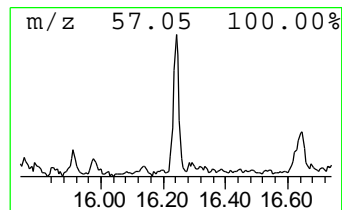
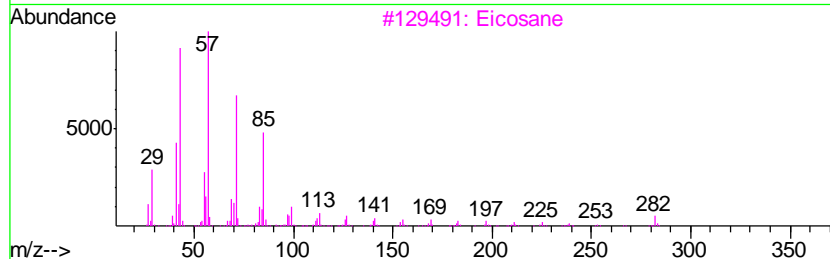
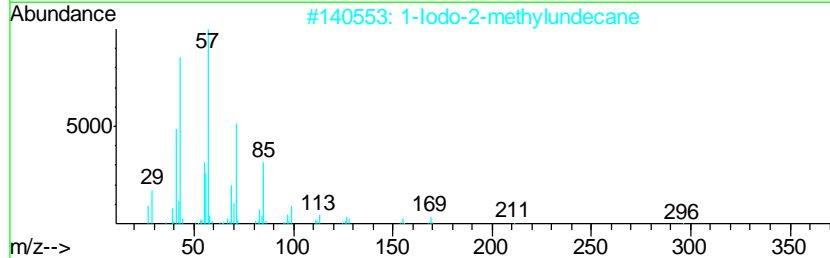
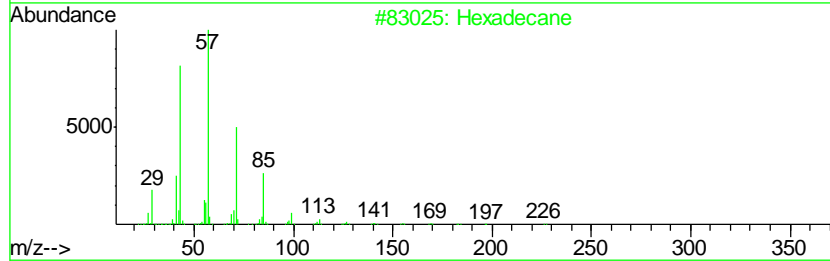
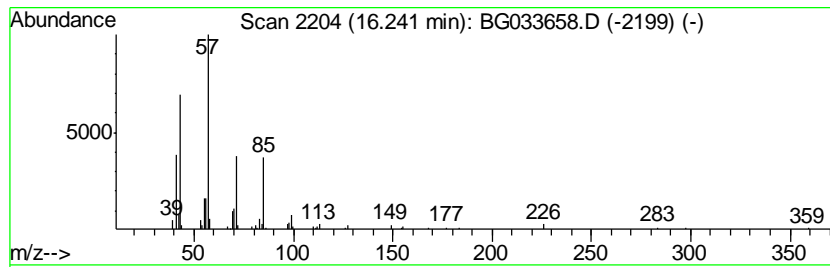
Quant Method : Z:\HPCHEM1\BNA G\METHODS\8270-BG031918.M
 Quant Title : ASP BNA STANDARDS FOR 5 POINT CALIBRATION

TIC Library : C:\Database\NIST11.L
 TIC Integration Parameters: LSCINT.P

 Peak Number 6 Hexadecane Concentration Rank 7

R.T.	EstConc	Area	Relative to ISTD	R.T.
16.24	2.79 ng	78233	Acenaphthene-d10	15.48

Hit#	of	Tentative ID	MW	MolForm	CAS#	Qual
1	5	Hexadecane	226	C16H34	000544-76-3	86
2		1-Iodo-2-methylundecane	296	C12H25I	073105-67-6	80
3		Eicosane	282	C20H42	000112-95-8	72
4		Pentadecane	212	C15H32	000629-62-9	64
5		Tridecane	184	C13H28	000629-50-5	64



Data Path : Z:\HPCHEM1\BNA G\DATA\BG040618\
 Data File : BG033658.D
 Acq On : 7 Apr 2018 9:55
 Operator : SJ/JU
 Sample : J2225-03
 Misc :
 ALS Vial : 29 Sample Multiplier: 1

Instrument :
 BNA_G
 ClientSampleID :
 040218-DBRI-F-D-B

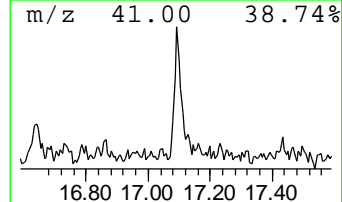
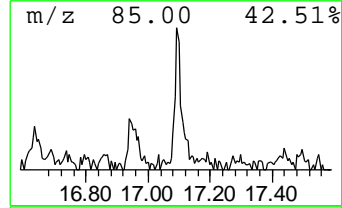
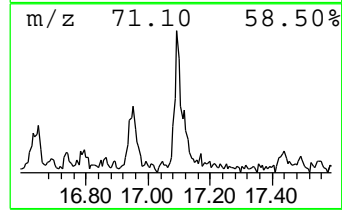
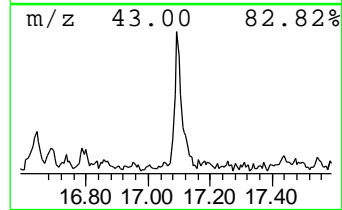
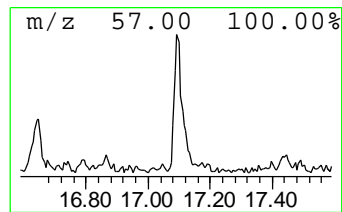
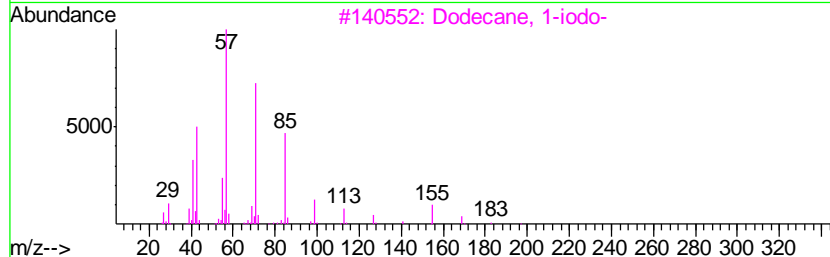
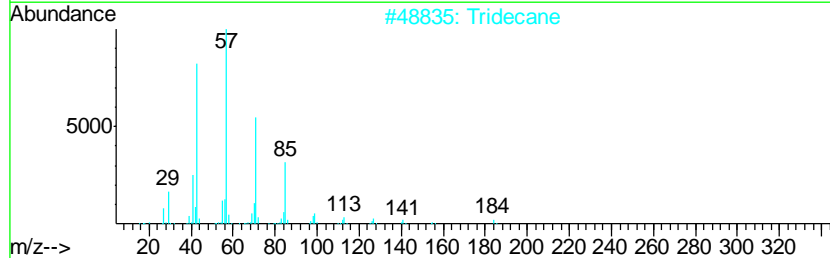
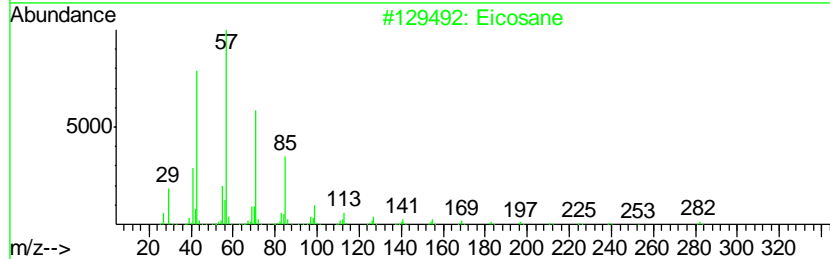
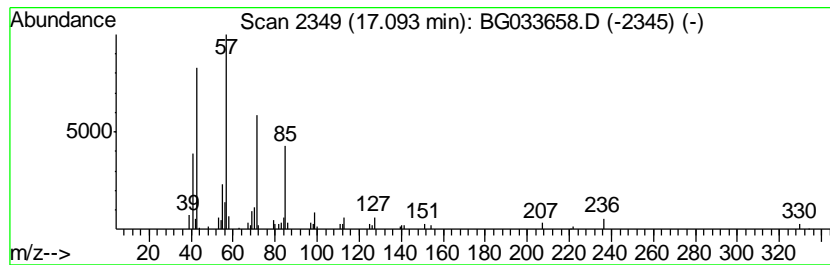
Quant Method : Z:\HPCHEM1\BNA G\METHODS\8270-BG031918.M
 Quant Title : ASP BNA STANDARDS FOR 5 POINT CALIBRATION

TIC Library : C:\Database\NIST11.L
 TIC Integration Parameters: LSCINT.P

 Peak Number 7 Eicosane Concentration Rank 8

R.T.	EstConc	Area	Relative to ISTD	R.T.
17.09	2.27 ng	82363	Phenanthrene-d10	18.21

Hit#	of	Tentative ID	MW	MolForm	CAS#	Qual
1	5	Eicosane	282	C20H42	000112-95-8	80
2		Tridecane	184	C13H28	000629-50-5	80
3		Dodecane, 1-iodo-	296	C12H25I	004292-19-7	72
4		Tridecane, 1-iodo-	310	C13H27I	035599-77-0	72
5		Nonadecane, 9-methyl-	282	C20H42	013287-24-6	72



Data Path : Z:\HPCHEM1\BNA G\DATA\BG040618\
 Data File : BG033658.D
 Acq On : 7 Apr 2018 9:55
 Operator : SJ/JU
 Sample : J2225-03
 Misc :
 ALS Vial : 29 Sample Multiplier: 1

Instrument :
 BNA_G
 ClientSampleId :
 040218-DBRI-F-D-B

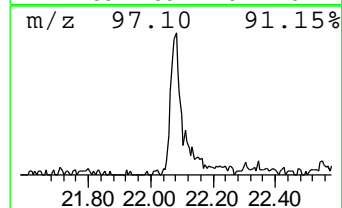
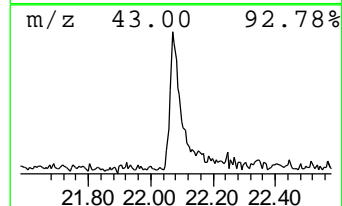
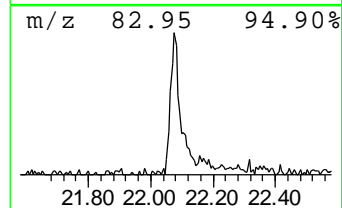
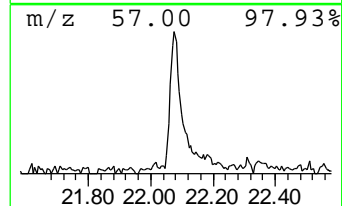
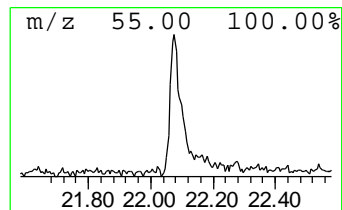
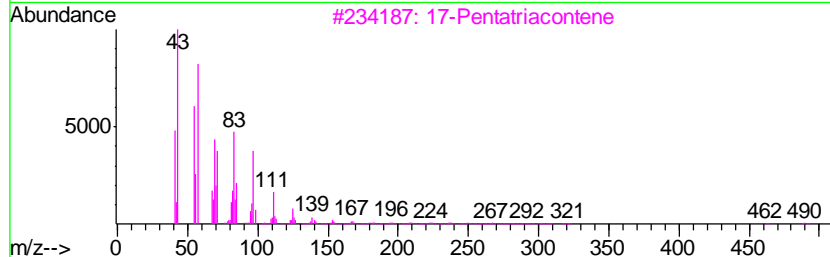
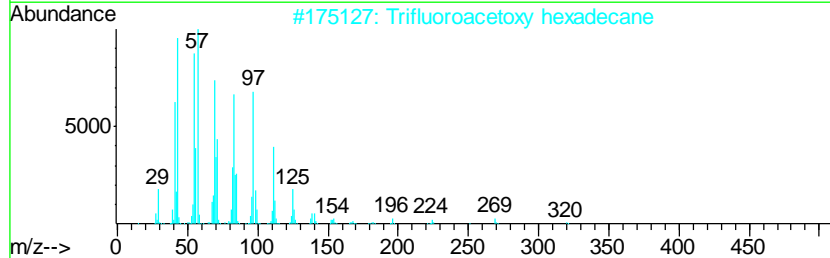
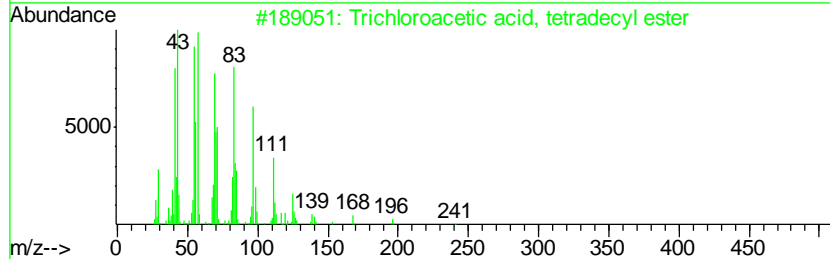
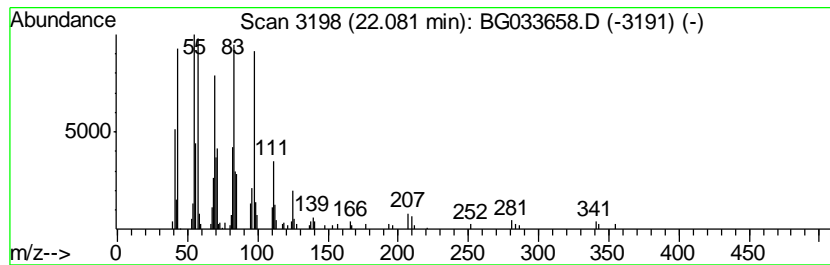
Quant Method : Z:\HPCHEM1\BNA G\METHODS\8270-BG031918.M
 Quant Title : ASP BNA STANDARDS FOR 5 POINT CALIBRATION

TIC Library : C:\Database\NIST11.L
 TIC Integration Parameters: LSCINT.P

 Peak Number 8 Trichloroacetic acid, tetra... Concentration Rank 6

R.T.	EstConc	Area	Relative to ISTD	R.T.
22.08	5.24 ng	212538	Chrysene-d12	22.55

Hit#	of	Tentative ID	MW	MolForm	CAS#	Qual
1	5	Trichloroacetic acid, tetradecyl...	358	C16H29Cl3O2	074339-52-9	91
2		Trifluoroacetoxy hexadecane	338	C18H33F3O2	006222-03-3	90
3		17-Pentatriacontene	491	C35H70	006971-40-0	87
4		1-Heptadecene	238	C17H34	006765-39-5	83
5		1-Tricosene	322	C23H46	018835-32-0	81



Data Path : Z:\HPCHEM1\BNA_G\DATA\BG040618\
Data File : BG033658.D
Acq On : 7 Apr 2018 9:55
Operator : SJ/JU
Sample : J2225-03
Misc :
ALS Vial : 29 Sample Multiplier: 1

Instrument :
BNA_G
ClientSampleId :
040218-DBRI-F-D-B

Quant Method : Z:\HPCHEM1\BNA_G\METHODS\8270-BG031918.M
Quant Title : ASP BNA STANDARDS FOR 5 POINT CALIBRATION

TIC Library : C:\Database\NIST11.L
TIC Integration Parameters: LSCINT.P

TIC Top Hit name	RT	EstConc	Units	Response	--Internal Standard--			
					#	RT	Resp	Conc
Butane, 2-methoxy...	3.57	20.4	ng	200502	1	8.86	196330	20.0
2-Pentanone, 4-hy...	5.77	7.1	ng	69891	1	8.86	196330	20.0
unknown8.37	8.37	70.8	ng	695062	1	8.86	196330	20.0
Hexadecane	16.24	2.8	ng	78233	3	15.48	560210	20.0
Eicosane	17.09	2.3	ng	82363	4	18.21	726966	20.0
Trichloroacetic a...	22.08	5.2	ng	212538	5	22.55	810558	20.0