

Data Path : Z:\svoasrv\HPCHEM1\BNA\_G\Data\BG040622\  
 Data File : BG053064.D  
 Acq On : 6 Apr 2022 21:02  
 Operator : CG/JU  
 Sample : N2257-05DL 10X  
 Misc :  
 ALS Vial : 14 Sample Multiplier: 1

Instrument :  
 BNA\_G  
 ClientSampleId :  
 TP-3DL

Quant Time: Apr 07 04:11:13 2022  
 Quant Method : Z:\svoasrv\HPCHEM1\BNA\_G\Methods\8270-BG031522.M  
 Quant Title : ASP BNA STANDARDS FOR 5 POINT CALIBRATION  
 QLast Update : Wed Apr 06 14:35:39 2022  
 Response via : Initial Calibration

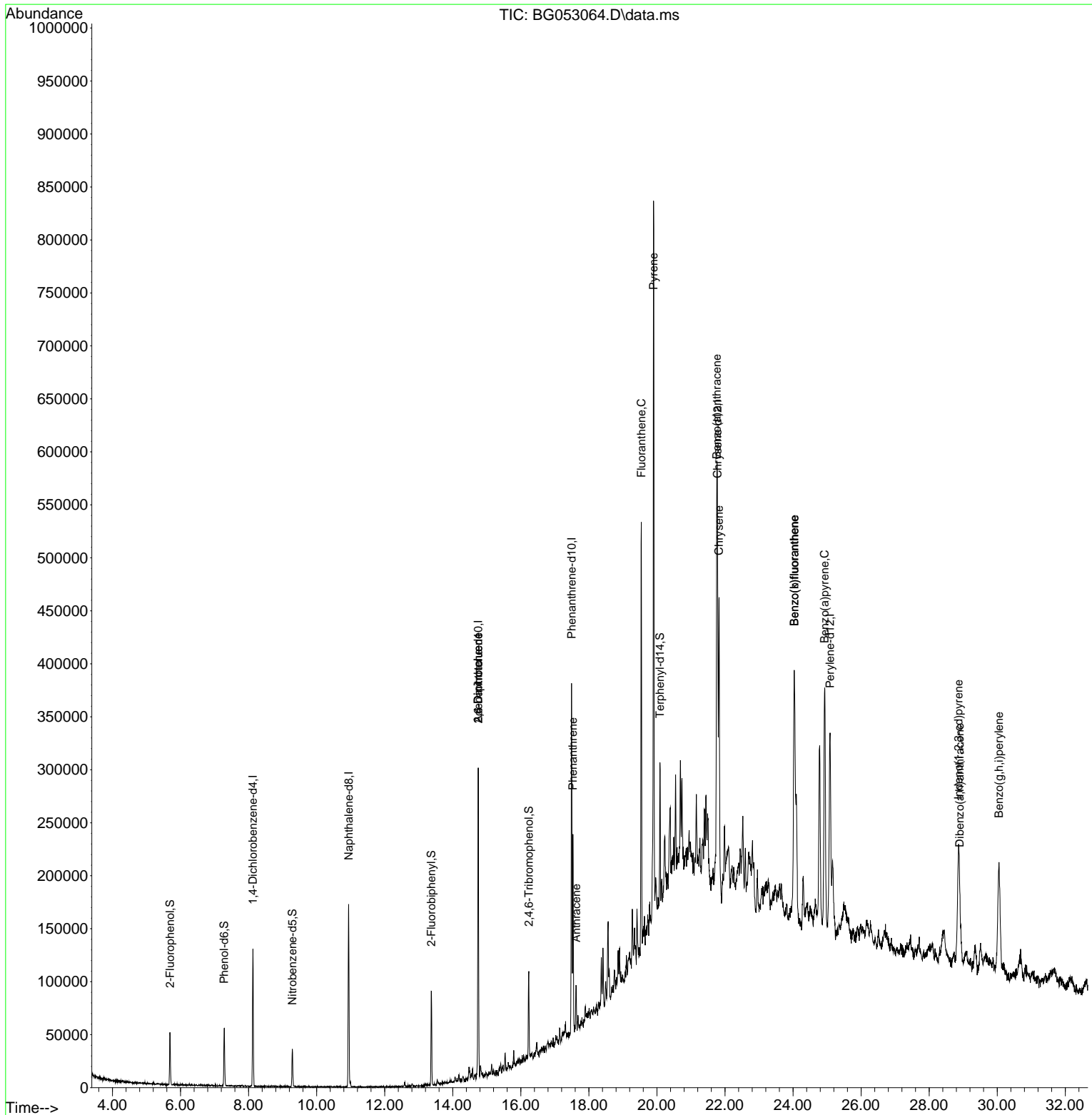
| Compound                    | R.T.   | QIon | Response | Conc      | Units | Dev(Min) |
|-----------------------------|--------|------|----------|-----------|-------|----------|
| Internal Standards          |        |      |          |           |       |          |
| 1) 1,4-Dichlorobenzene-d4   | 8.129  | 152  | 32699    | 20.000    | ng    | 0.00     |
| 21) Naphthalene-d8          | 10.943 | 136  | 137532   | 20.000    | ng    | # 0.00   |
| 39) Acenaphthene-d10        | 14.749 | 164  | 100975   | 20.000    | ng    | 0.00     |
| 64) Phenanthrene-d10        | 17.493 | 188  | 202948   | 20.000    | ng    | 0.00     |
| 76) Chrysene-d12            | 21.781 | 240  | 178340   | 20.000    | ng    | 0.00     |
| 86) Perylene-d12            | 25.088 | 264  | 196258   | 20.000    | ng    | 0.00     |
| System Monitoring Compounds |        |      |          |           |       |          |
| 5) 2-Fluorophenol           | 5.691  | 112  | 20227    | 10.773    | ng    | 0.00     |
| 7) Phenol-d6                | 7.283  | 99   | 31097    | 10.986    | ng    | 0.00     |
| 23) Nitrobenzene-d5         | 9.286  | 82   | 22846    | 8.337     | ng    | 0.00     |
| 42) 2,4,6-Tribromophenol    | 16.235 | 330  | 15139    | 11.158    | ng    | 0.00     |
| 45) 2-Fluorobiphenyl        | 13.369 | 172  | 49619    | 7.247     | ng    | 0.00     |
| 79) Terphenyl-d14           | 20.089 | 244  | 66405    | 6.624     | ng    | 0.00     |
| Target Compounds            |        |      |          |           |       |          |
| 9) Benzaldehyde             | 7.301  | 77   | 74       | Below Cal |       | # 5      |
| 51) 2,6-Dinitrotoluene      | 14.749 | 165  | 13699    | 10.812    | ng    | # 26     |
| 57) 2,4-Dinitrotoluene      | 14.749 | 165  | 13699    | 7.792     | ng    | # 25     |
| 71) Phenanthrene            | 17.534 | 178  | 112416   | 10.354    | ng    | 96       |
| 72) Anthracene              | 17.628 | 178  | 30434    | 2.836     | ng    | 95       |
| 75) Fluoranthene            | 19.543 | 202  | 263093   | 19.090    | ng    | 98       |
| 78) Pyrene                  | 19.901 | 202  | 451998   | 36.537    | ng    | 98       |
| 81) Benzo(a)anthracene      | 21.757 | 228  | 222025   | 18.592    | ng    | 99       |
| 83) Chrysene                | 21.822 | 228  | 212560   | 18.933    | ng    | 96       |
| 87) Indeno(1,2,3-cd)pyrene  | 28.865 | 276  | 201683   | 15.014    | ng    | 100      |
| 88) Benzo(b)fluoranthene    | 24.037 | 252  | 319412   | 26.212    | ng    | 98       |
| 89) Benzo(k)fluoranthene    | 24.037 | 252  | 319412   | 26.642    | ng    | 98       |
| 90) Benzo(a)pyrene          | 24.930 | 252  | 296446   | 28.740    | ng    | 99       |
| 91) Dibenzo(a,h)anthracene  | 28.901 | 278  | 51793    | 4.679     | ng    | # 90     |
| 92) Benzo(g,h,i)perylene    | 30.052 | 276  | 231447   | 21.133    | ng    | 98       |

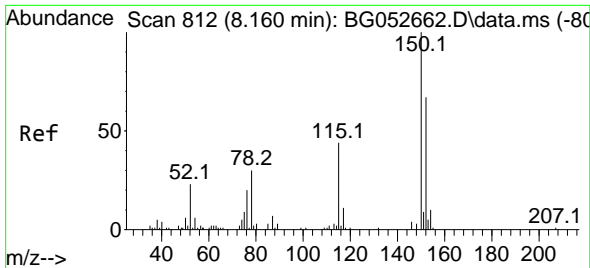
(#) = qualifier out of range (m) = manual integration (+) = signals summed

Data Path : Z:\svoasrv\HPCHEM1\BNA\_G\Data\BG040622\  
 Data File : BG053064.D  
 Acq On : 6 Apr 2022 21:02  
 Operator : CG/JU  
 Sample : N2257-05DL 10X  
 Misc :  
 ALS Vial : 14 Sample Multiplier: 1

Instrument :  
 BNA\_G  
 ClientSampleId :  
 TP-3DL

Quant Time: Apr 07 04:11:13 2022  
 Quant Method : Z:\svoasrv\HPCHEM1\BNA\_G\Methods\8270-BG031522.M  
 Quant Title : ASP BNA STANDARDS FOR 5 POINT CALIBRATION  
 QLast Update : Wed Apr 06 14:35:39 2022  
 Response via : Initial Calibration

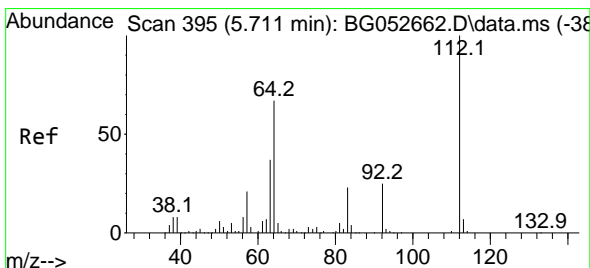
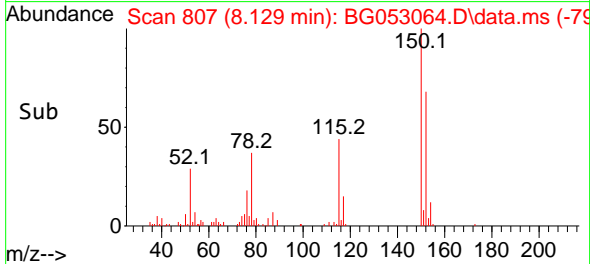
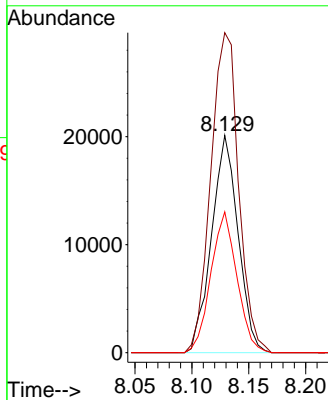
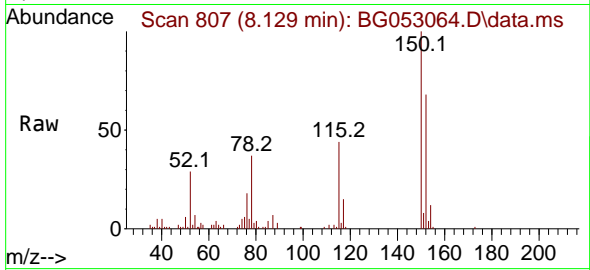




#1  
 1,4-Dichlorobenzene-d4  
 Concen: 20.000 ng  
 RT: 8.129 min Scan# 807  
 Delta R.T. 0.001 min  
 Lab File: BG053064.D  
 Acq: 6 Apr 2022 21:02

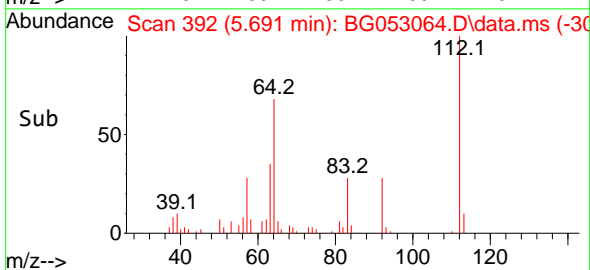
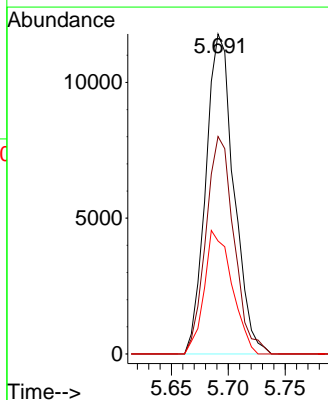
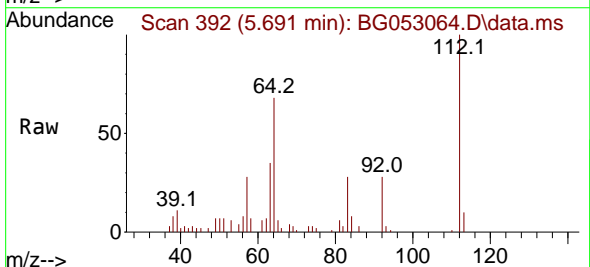
Instrument :  
 BNA\_G  
 ClientSampleId :  
 TP-3DL

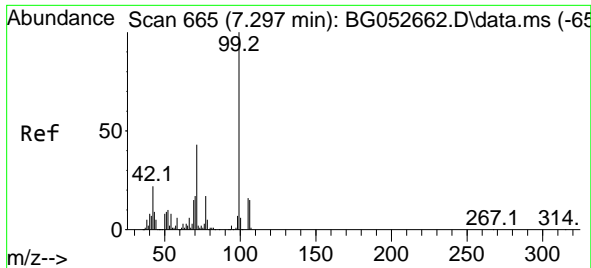
Tgt Ion:152 Resp: 32699  
 Ion Ratio Lower Upper  
 152 100  
 150 147.3 114.6 172.0  
 115 64.8 45.9 68.9



#5  
 2-Fluorophenol  
 Concen: 10.773 ng  
 RT: 5.691 min Scan# 392  
 Delta R.T. 0.007 min  
 Lab File: BG053064.D  
 Acq: 6 Apr 2022 21:02

Tgt Ion:112 Resp: 20227  
 Ion Ratio Lower Upper  
 112 100  
 64 67.9 48.0 72.0  
 63 35.3 26.5 39.7

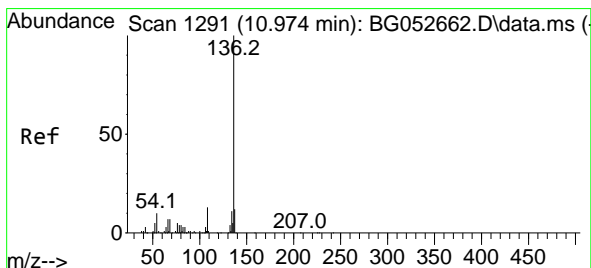
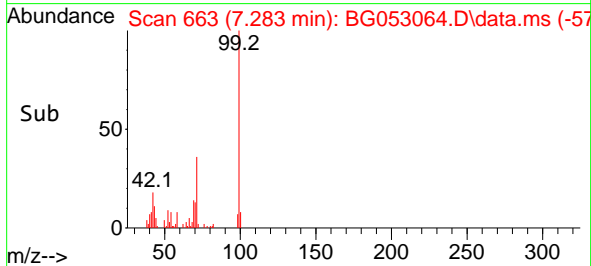
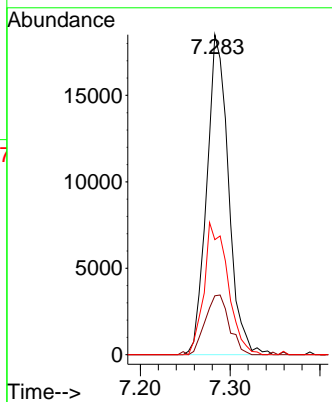
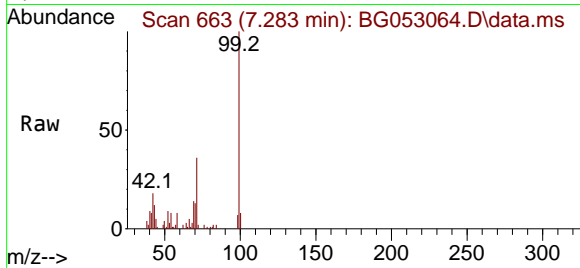




#7  
 Phenol-d6  
 Concen: 10.986 ng  
 RT: 7.283 min Scan# 60  
 Delta R.T. 0.001 min  
 Lab File: BG053064.D  
 Acq: 6 Apr 2022 21:02

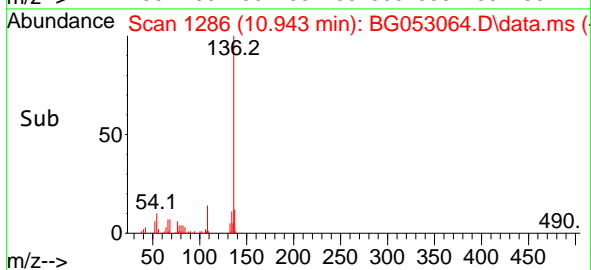
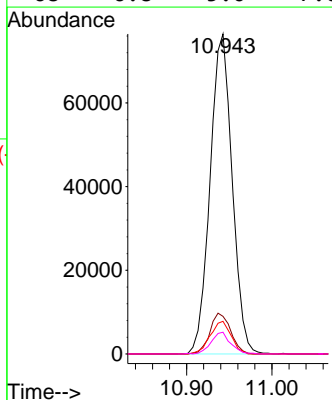
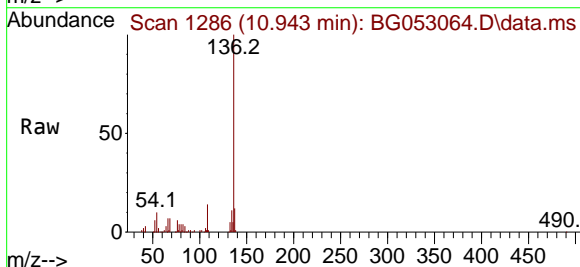
Instrument :  
 BNA\_G  
 ClientSampleId :  
 TP-3DL

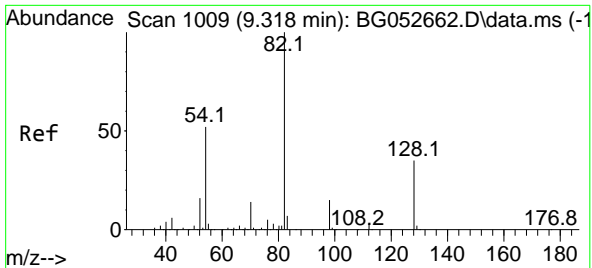
Tgt Ion: 99 Resp: 31097  
 Ion Ratio Lower Upper  
 99 100  
 42 18.4 14.7 22.1  
 71 35.9 29.2 43.8



#21  
 Naphthalene-d8  
 Concen: 20.000 ng  
 RT: 10.943 min Scan# 1286  
 Delta R.T. 0.001 min  
 Lab File: BG053064.D  
 Acq: 6 Apr 2022 21:02

Tgt Ion:136 Resp: 137532  
 Ion Ratio Lower Upper  
 136 100  
 137 11.8 9.4 14.2  
 54 10.2 6.4 9.6#  
 68 6.8 5.0 7.6



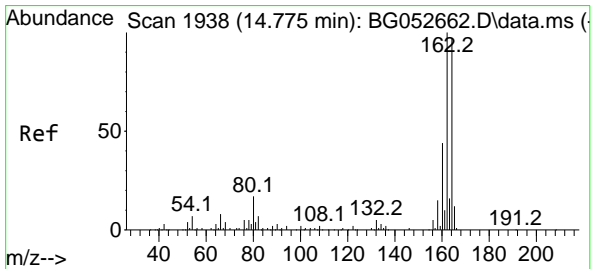
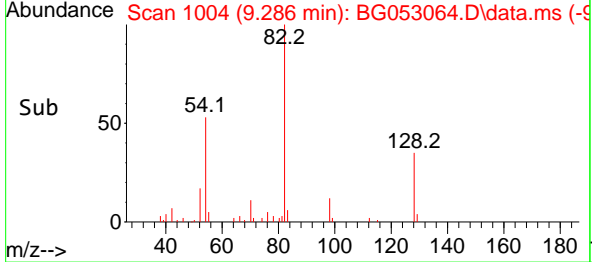
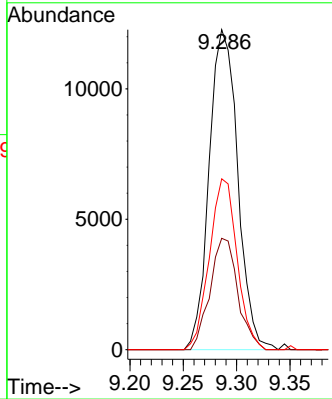
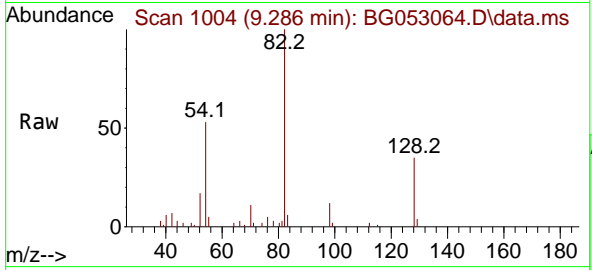


#23  
 Nitrobenzene-d5  
 Concen: 8.337 ng  
 RT: 9.286 min Scan# 1004  
 Delta R.T. -0.005 min  
 Lab File: BG053064.D  
 Acq: 6 Apr 2022 21:02

Instrument :  
 BNA\_G  
 ClientSampleId :  
 TP-3DL

Tgt Ion: 82 Resp: 22846

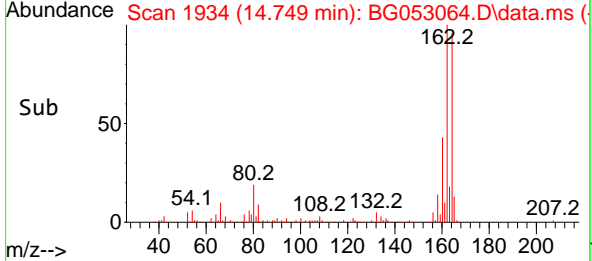
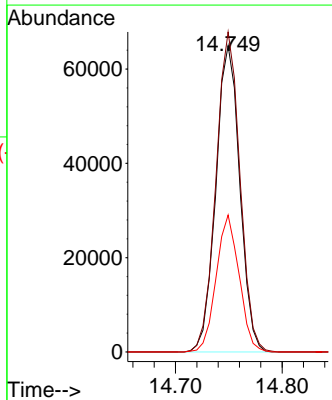
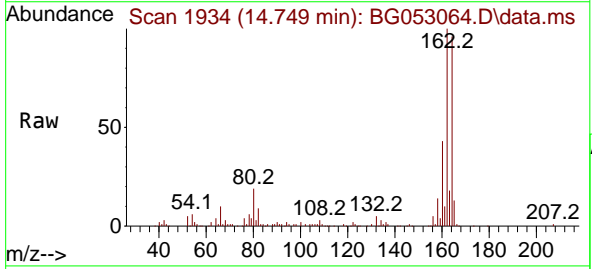
| Ion | Ratio | Lower | Upper |
|-----|-------|-------|-------|
| 82  | 100   |       |       |
| 128 | 34.8  | 31.3  | 46.9  |
| 54  | 53.4  | 37.8  | 56.8  |

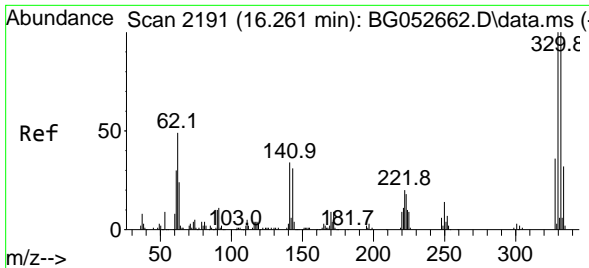


#39  
 Acenaphthene-d10  
 Concen: 20.000 ng  
 RT: 14.749 min Scan# 1934  
 Delta R.T. 0.001 min  
 Lab File: BG053064.D  
 Acq: 6 Apr 2022 21:02

Tgt Ion: 164 Resp: 100975

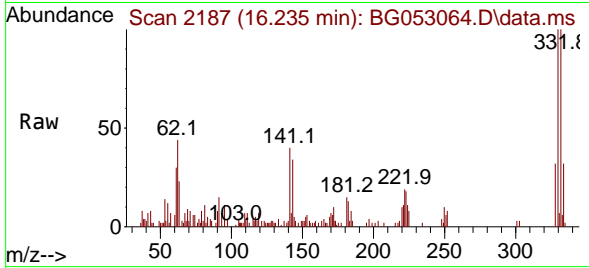
| Ion | Ratio | Lower | Upper |
|-----|-------|-------|-------|
| 164 | 100   |       |       |
| 162 | 104.4 | 80.0  | 120.0 |
| 160 | 44.7  | 38.8  | 58.2  |



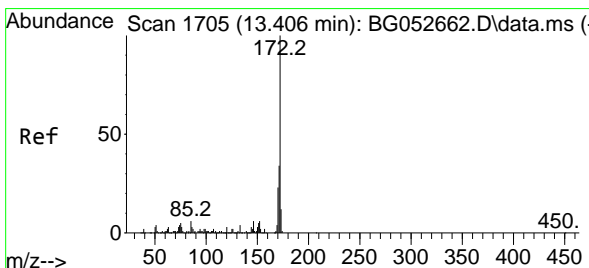
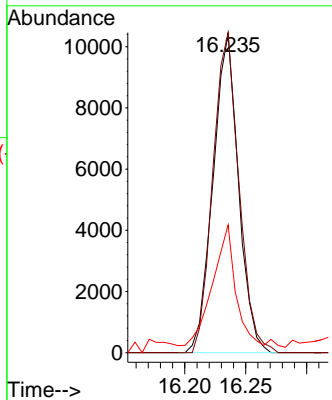
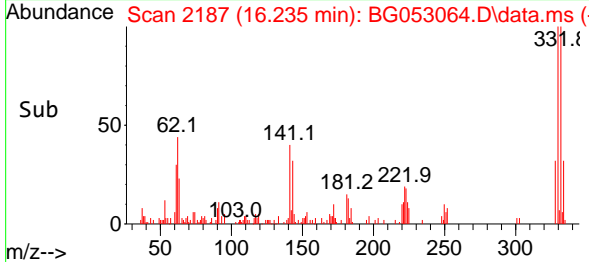


#42  
 2,4,6-Tribromophenol  
 Concen: 11.158 ng  
 RT: 16.235 min Scan# 2191  
 Delta R.T. 0.001 min  
 Lab File: BG053064.D  
 Acq: 6 Apr 2022 21:02

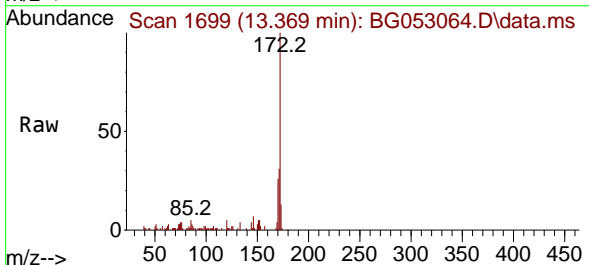
Instrument :  
 BNA\_G  
 ClientSampleId :  
 TP-3DL



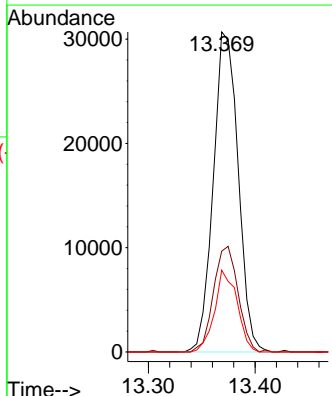
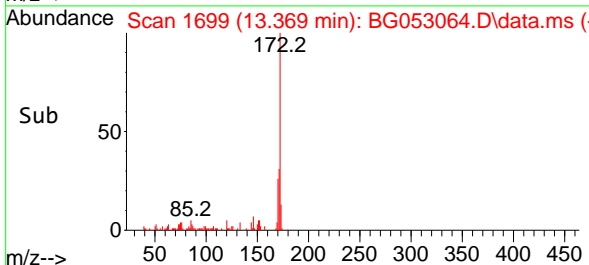
Tgt Ion:330 Resp: 15139  
 Ion Ratio Lower Upper  
 330 100  
 332 102.3 75.8 113.6  
 141 35.8 24.6 36.8

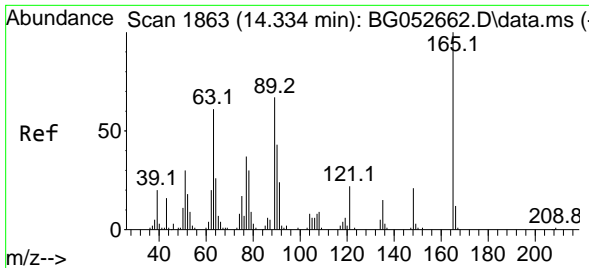


#45  
 2-Fluorobiphenyl  
 Concen: 7.247 ng  
 RT: 13.369 min Scan# 1699  
 Delta R.T. -0.005 min  
 Lab File: BG053064.D  
 Acq: 6 Apr 2022 21:02



Tgt Ion:172 Resp: 49619  
 Ion Ratio Lower Upper  
 172 100  
 171 31.5 28.3 42.5  
 170 25.6 18.0 27.0



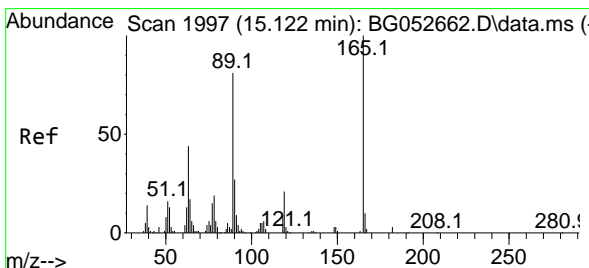
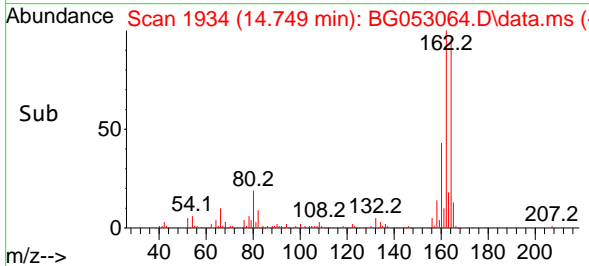
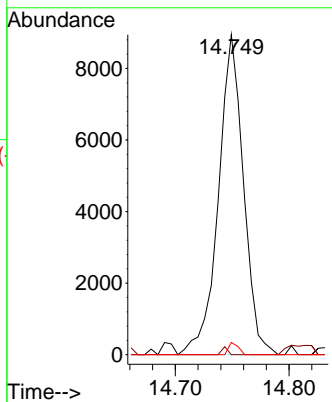
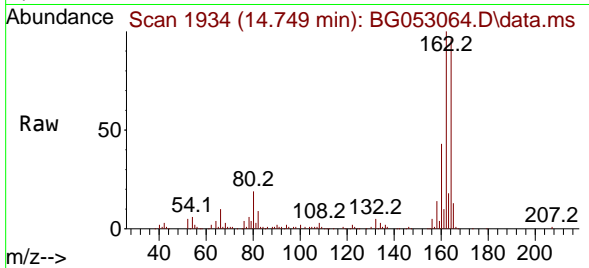


#51  
 2,6-Dinitrotoluene  
 Concen: 10.812 ng  
 RT: 14.749 min Scan# 1934  
 Delta R.T. 0.436 min  
 Lab File: BG053064.D  
 Acq: 6 Apr 2022 21:02

Instrument :  
 BNA\_G  
 ClientSampleId :  
 TP-3DL

Tgt Ion:165 Resp: 13699

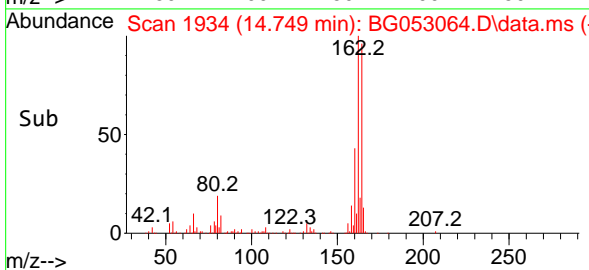
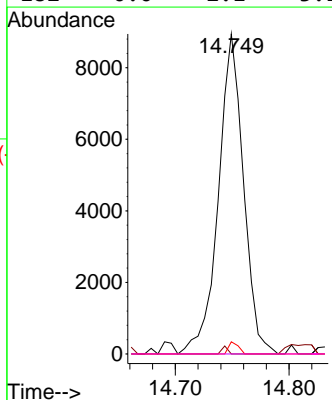
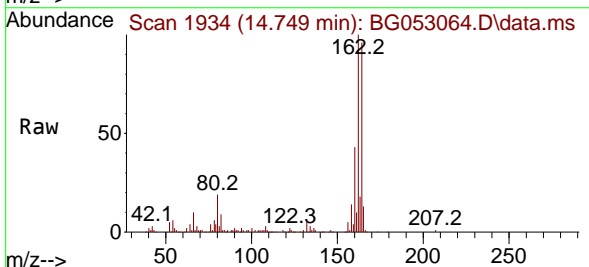
| Ion | Ratio | Lower | Upper |
|-----|-------|-------|-------|
| 165 | 100   |       |       |
| 63  | 0.0   | 43.7  | 65.5# |
| 89  | 3.8   | 45.0  | 67.4# |

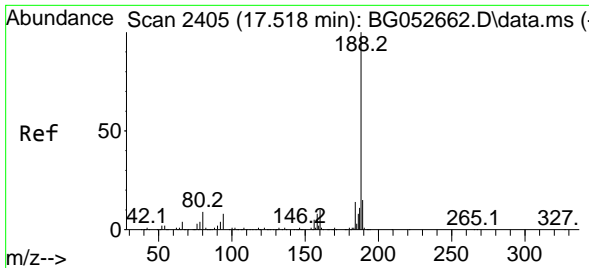


#57  
 2,4-Dinitrotoluene  
 Concen: 7.792 ng  
 RT: 14.749 min Scan# 1934  
 Delta R.T. -0.352 min  
 Lab File: BG053064.D  
 Acq: 6 Apr 2022 21:02

Tgt Ion:165 Resp: 13699

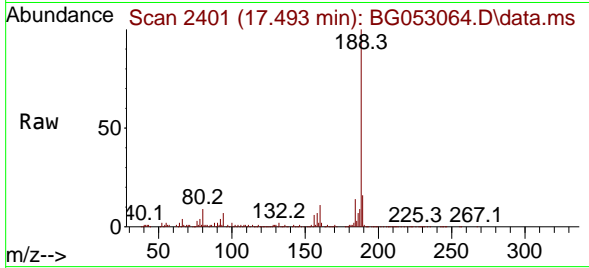
| Ion | Ratio | Lower | Upper |
|-----|-------|-------|-------|
| 165 | 100   |       |       |
| 63  | 0.0   | 34.8  | 52.2# |
| 89  | 3.8   | 57.4  | 86.0# |
| 182 | 0.0   | 2.1   | 3.1#  |



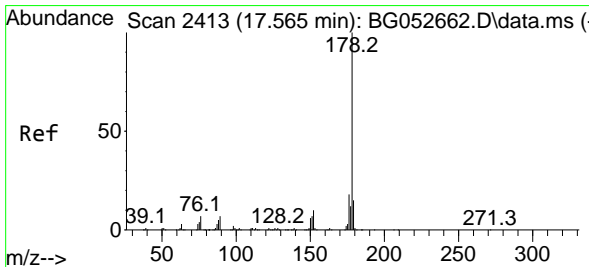
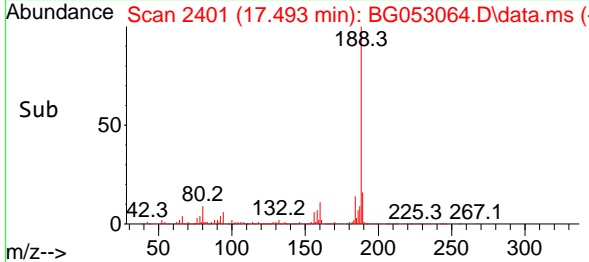
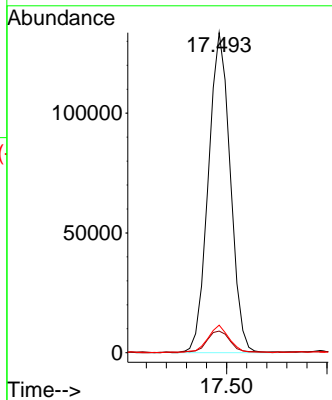


#64  
 Phenanthrene-d10  
 Concen: 20.000 ng  
 RT: 17.493 min Scan# 2401  
 Delta R.T. 0.001 min  
 Lab File: BG053064.D  
 Acq: 6 Apr 2022 21:02

Instrument :  
 BNA\_G  
 ClientSampleId :  
 TP-3DL

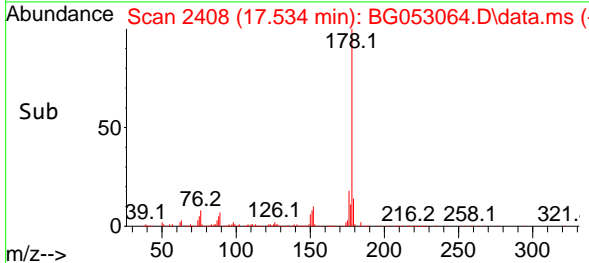
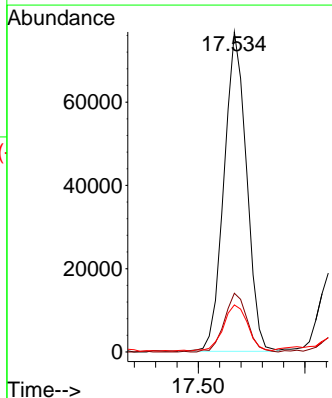
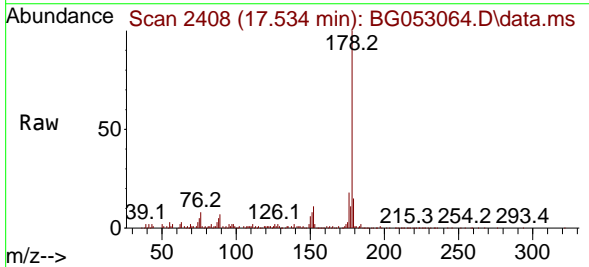


Tgt Ion:188 Resp: 202948  
 Ion Ratio Lower Upper  
 188 100  
 94 6.7 5.7 8.5  
 80 8.6 7.2 10.8

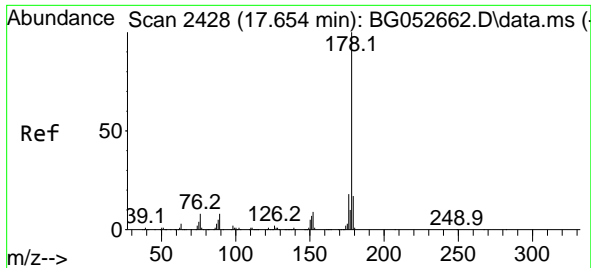


#71  
 Phenanthrene  
 Concen: 10.354 ng  
 RT: 17.534 min Scan# 2408  
 Delta R.T. 0.001 min  
 Lab File: BG053064.D  
 Acq: 6 Apr 2022 21:02

Tgt Ion:178 Resp: 112416  
 Ion Ratio Lower Upper  
 178 100  
 176 18.3 15.9 23.9  
 179 14.7 13.4 20.2



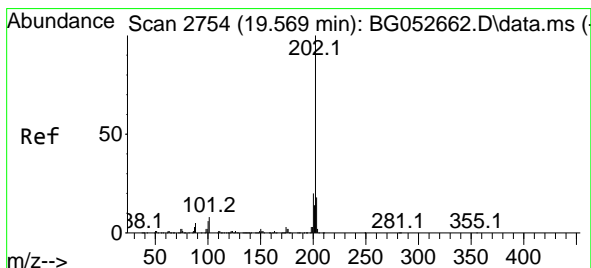
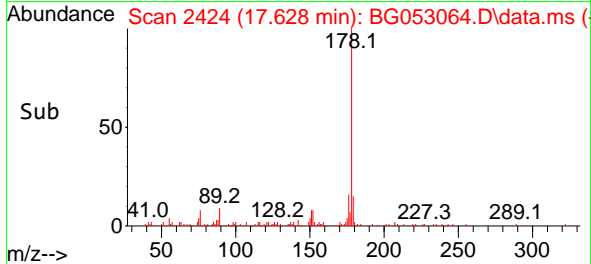
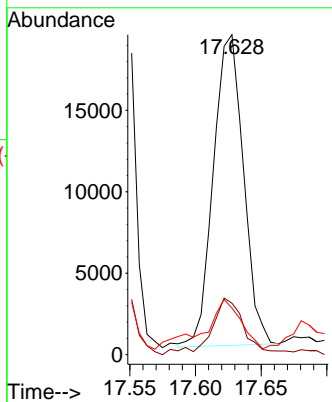
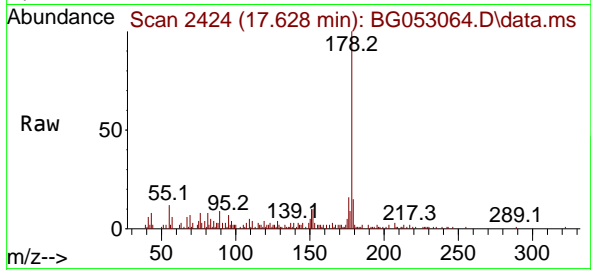




#72  
 Anthracene  
 Concen: 2.836 ng  
 RT: 17.628 min Scan# 2424  
 Delta R.T. 0.001 min  
 Lab File: BG053064.D  
 Acq: 6 Apr 2022 21:02

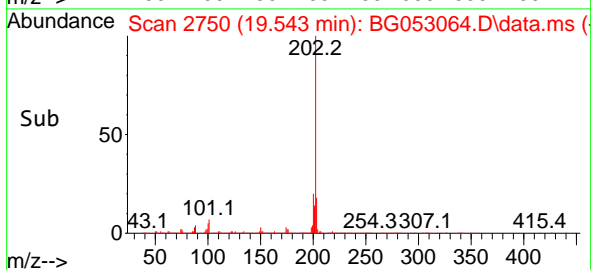
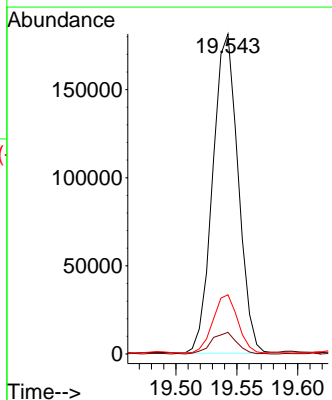
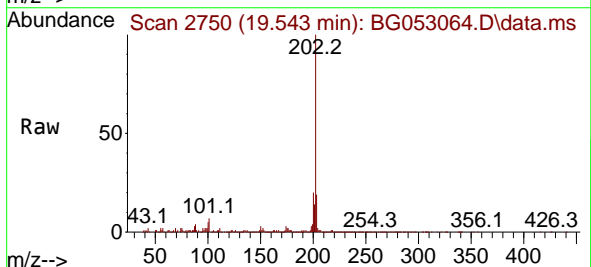
Instrument :  
 BNA\_G  
 ClientSampleId :  
 TP-3DL

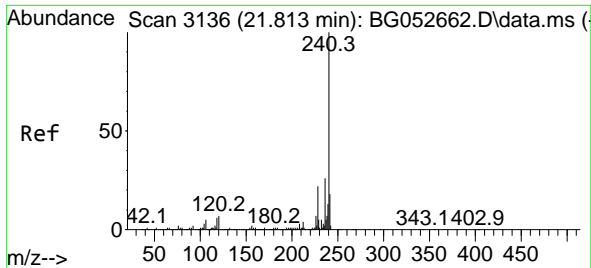
| Tgt Ion | Resp | Lower | Upper |
|---------|------|-------|-------|
| 178     | 100  |       |       |
| 176     | 16.1 | 14.7  | 22.1  |
| 179     | 14.6 | 13.2  | 19.8  |



#75  
 Fluoranthene  
 Concen: 19.090 ng  
 RT: 19.543 min Scan# 2750  
 Delta R.T. 0.001 min  
 Lab File: BG053064.D  
 Acq: 6 Apr 2022 21:02

| Tgt Ion | Resp | Lower | Upper |
|---------|------|-------|-------|
| 202     | 100  |       |       |
| 101     | 6.8  | 0.0   | 27.3  |
| 203     | 18.5 | 0.0   | 37.7  |



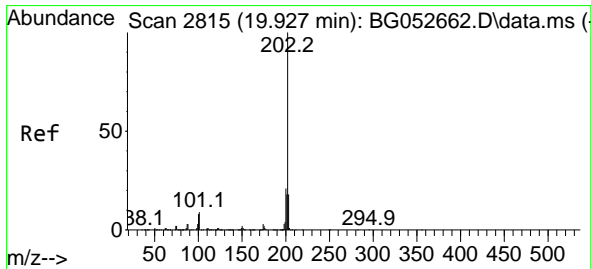
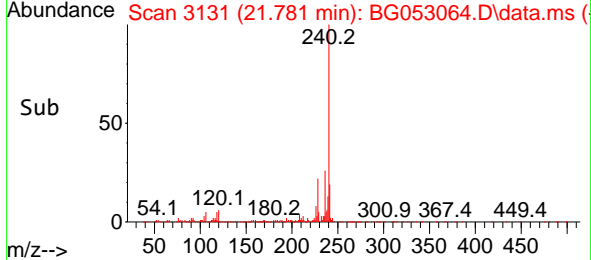
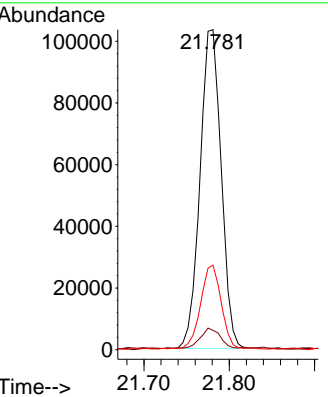
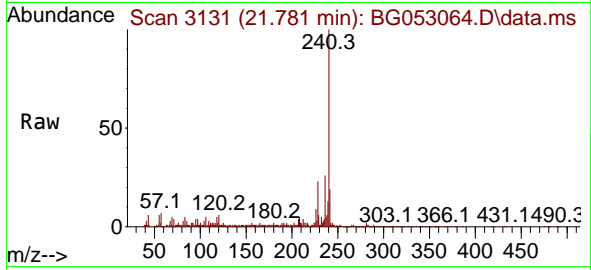


#76  
 Chrysene-d12  
 Concen: 20.000 ng  
 RT: 21.781 min Scan# 3136  
 Delta R.T. 0.001 min  
 Lab File: BG053064.D  
 Acq: 6 Apr 2022 21:02

Instrument :  
 BNA\_G  
 ClientSampleId :  
 TP-3DL

Tgt Ion:240 Resp: 178340

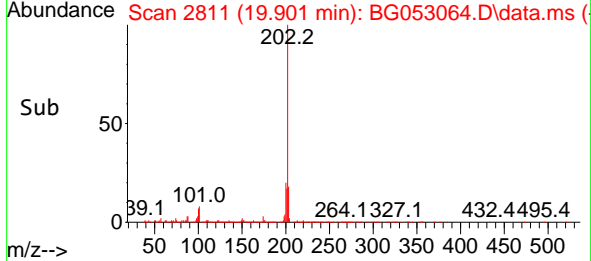
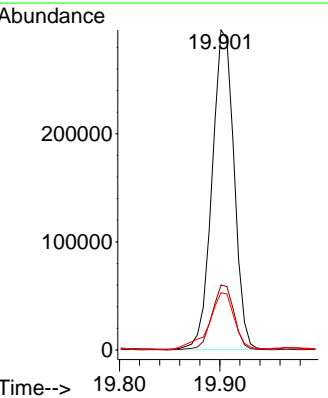
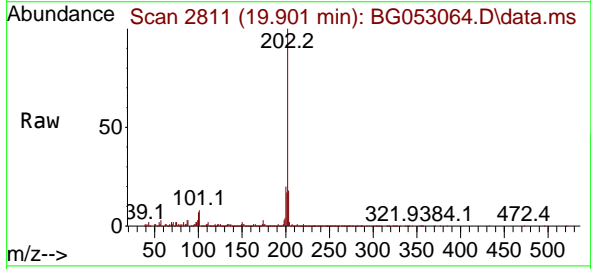
| Ion | Ratio | Lower | Upper |
|-----|-------|-------|-------|
| 240 | 100   |       |       |
| 120 | 6.0   | 5.4   | 8.0   |
| 236 | 26.4  | 19.8  | 29.6  |

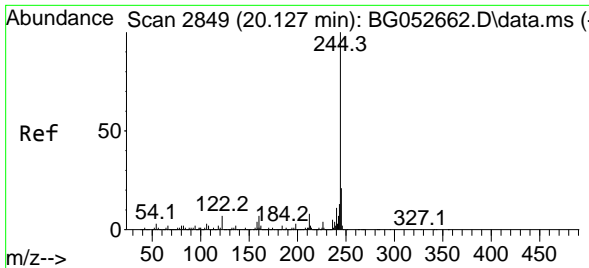


#78  
 Pyrene  
 Concen: 36.537 ng  
 RT: 19.901 min Scan# 2811  
 Delta R.T. 0.001 min  
 Lab File: BG053064.D  
 Acq: 6 Apr 2022 21:02

Tgt Ion:202 Resp: 451998

| Ion | Ratio | Lower | Upper |
|-----|-------|-------|-------|
| 202 | 100   |       |       |
| 200 | 20.3  | 17.0  | 25.6  |
| 203 | 17.9  | 15.0  | 22.6  |

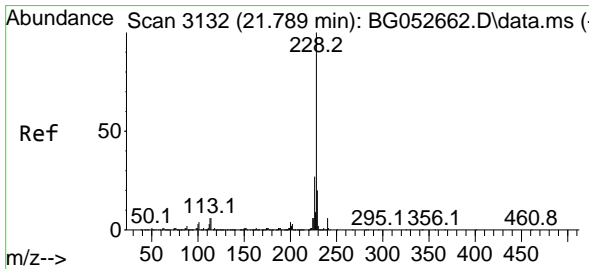
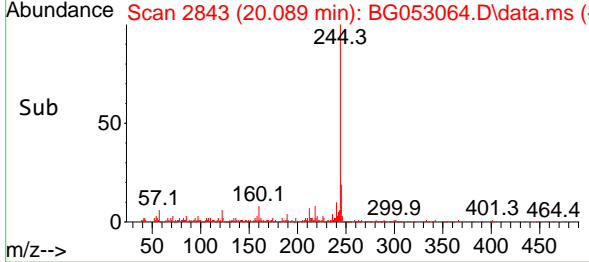
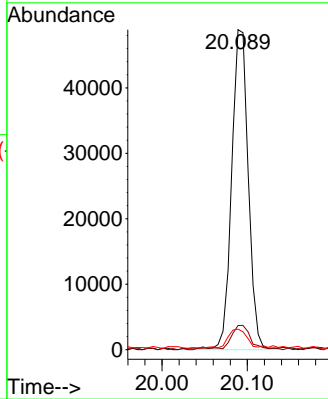
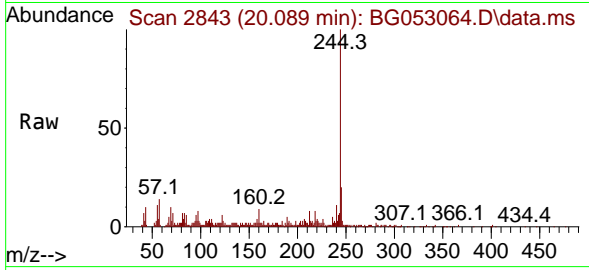




#79  
 Terphenyl-d14  
 Concen: 6.624 ng  
 RT: 20.089 min Scan# 21  
 Delta R.T. -0.005 min  
 Lab File: BG053064.D  
 Acq: 6 Apr 2022 21:02

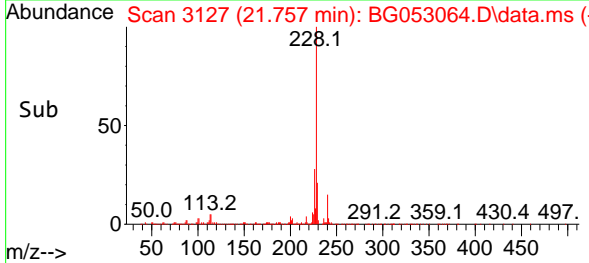
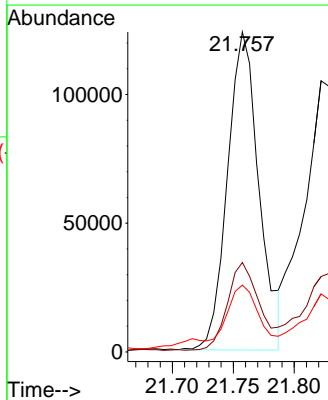
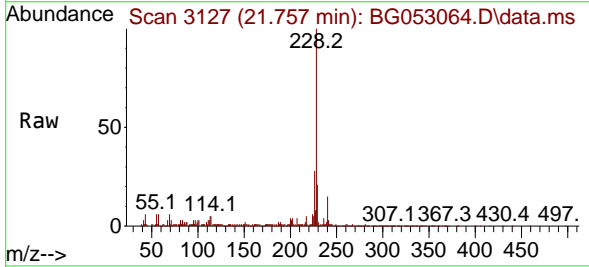
Instrument :  
 BNA\_G  
 ClientSampleId :  
 TP-3DL

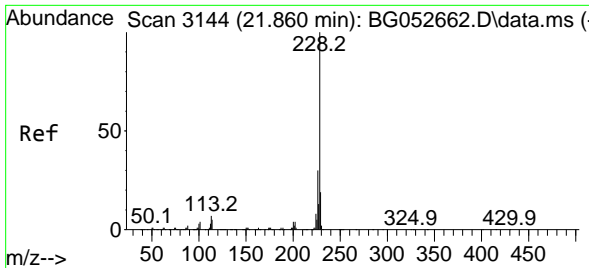
| Tgt Ion | Resp | Lower | Upper |
|---------|------|-------|-------|
| 244     | 100  |       |       |
| 212     | 7.6  | 5.4   | 8.2   |
| 122     | 6.4  | 5.8   | 8.6   |



#81  
 Benzo(a)anthracene  
 Concen: 18.592 ng  
 RT: 21.757 min Scan# 3127  
 Delta R.T. 0.001 min  
 Lab File: BG053064.D  
 Acq: 6 Apr 2022 21:02

| Tgt Ion | Resp | Lower | Upper |
|---------|------|-------|-------|
| 228     | 100  |       |       |
| 226     | 28.0 | 21.4  | 32.0  |
| 229     | 20.9 | 16.7  | 25.1  |



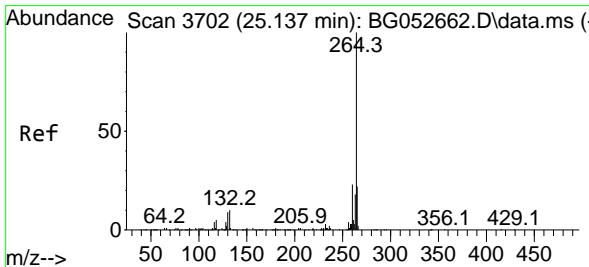
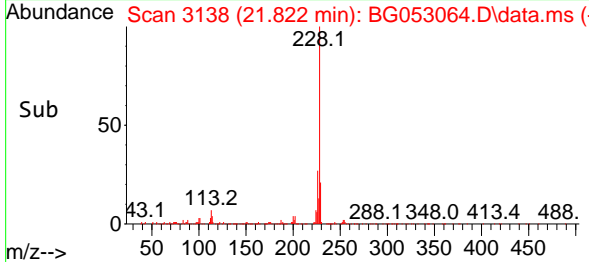
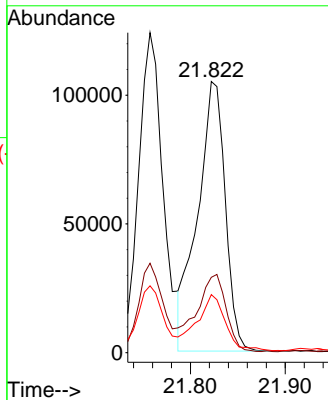
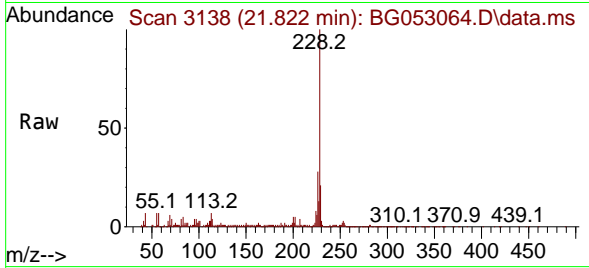


#83  
 Chrysene  
 Concen: 18.933 ng  
 RT: 21.822 min Scan# 3144  
 Delta R.T. -0.005 min  
 Lab File: BG053064.D  
 Acq: 6 Apr 2022 21:02

Instrument :  
 BNA\_G  
 ClientSampleId :  
 TP-3DL

Tgt Ion:228 Resp: 212560

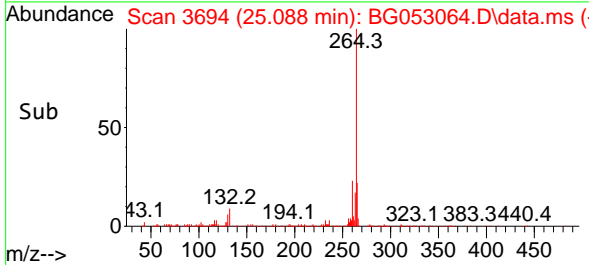
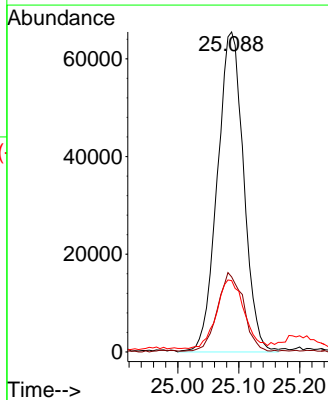
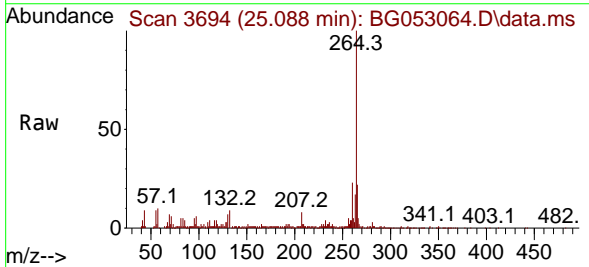
| Ion | Ratio | Lower | Upper |
|-----|-------|-------|-------|
| 228 | 100   |       |       |
| 226 | 27.8  | 24.2  | 36.4  |
| 229 | 21.4  | 16.3  | 24.5  |

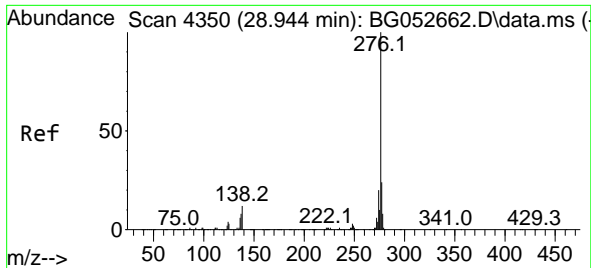


#86  
 Perylene-d12  
 Concen: 20.000 ng  
 RT: 25.088 min Scan# 3694  
 Delta R.T. 0.007 min  
 Lab File: BG053064.D  
 Acq: 6 Apr 2022 21:02

Tgt Ion:264 Resp: 196258

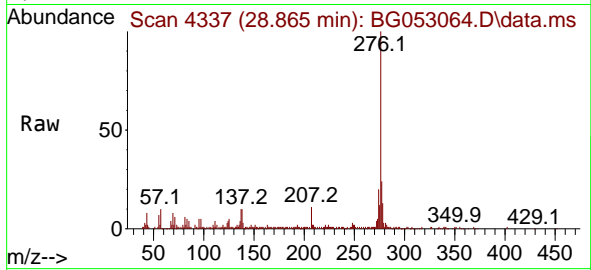
| Ion | Ratio | Lower | Upper |
|-----|-------|-------|-------|
| 264 | 100   |       |       |
| 260 | 23.5  | 18.2  | 27.2  |
| 265 | 22.3  | 15.1  | 22.7  |



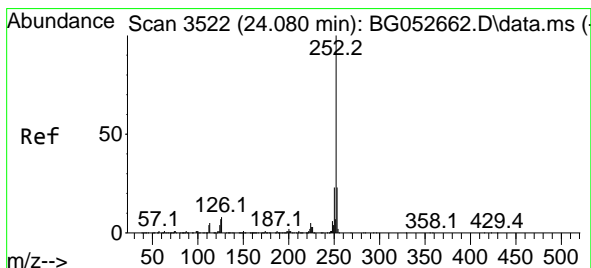
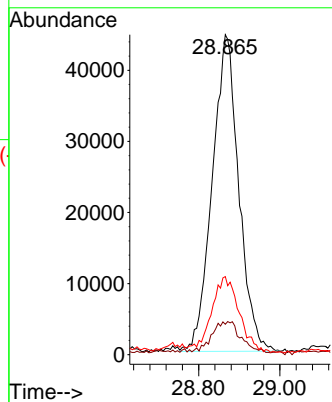
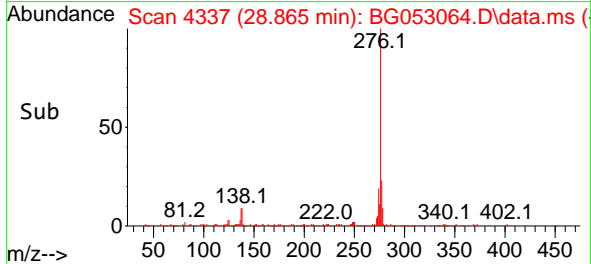


#87  
 Indeno(1,2,3-cd)pyrene  
 Concen: 15.014 ng  
 RT: 28.865 min Scan# 41  
 Delta R.T. -0.005 min  
 Lab File: BG053064.D  
 Acq: 6 Apr 2022 21:02

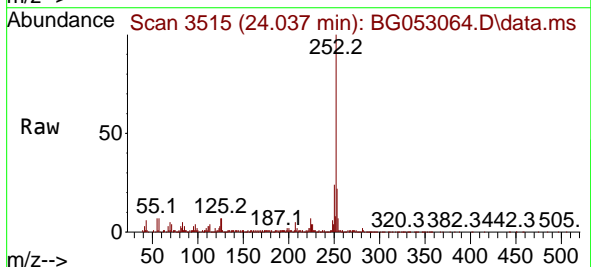
Instrument :  
 BNA\_G  
 ClientSampleId :  
 TP-3DL



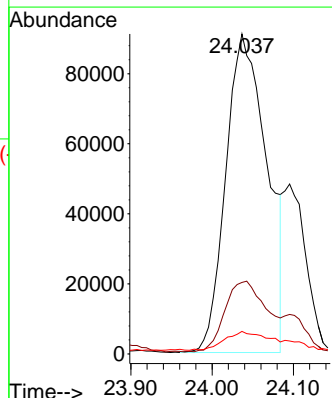
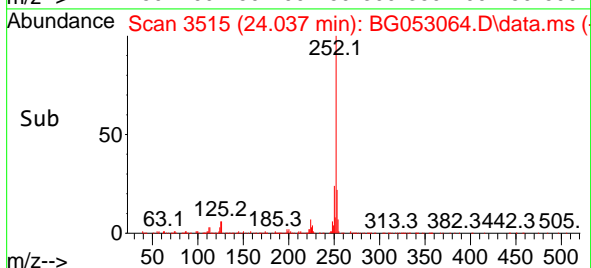
Tgt Ion: 276 Resp: 201683  
 Ion Ratio Lower Upper  
 276 100  
 138 10.8 8.7 13.1  
 277 25.5 20.2 30.4

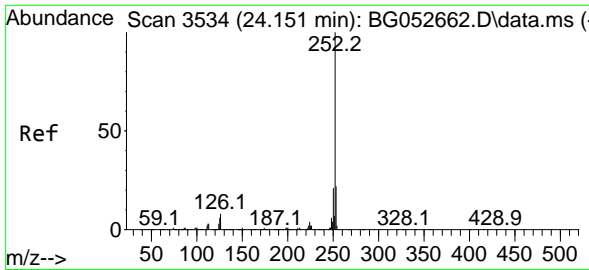


#88  
 Benzo(b)fluoranthene  
 Concen: 26.212 ng  
 RT: 24.037 min Scan# 3515  
 Delta R.T. 0.007 min  
 Lab File: BG053064.D  
 Acq: 6 Apr 2022 21:02



Tgt Ion: 252 Resp: 319412  
 Ion Ratio Lower Upper  
 252 100  
 253 22.3 17.2 25.8  
 125 7.0 5.2 7.8



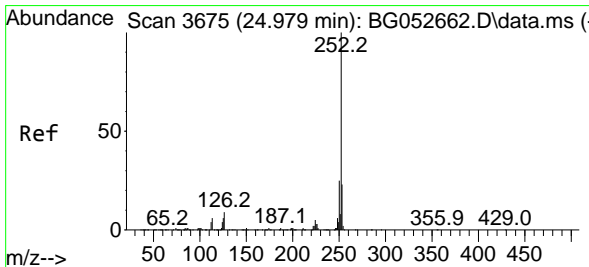
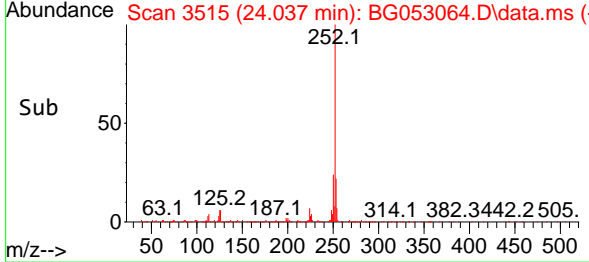
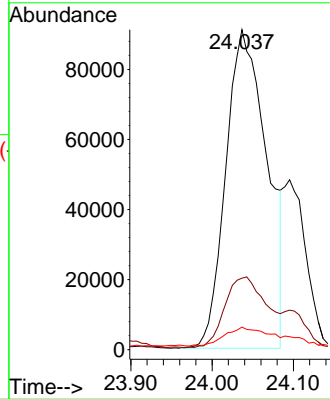
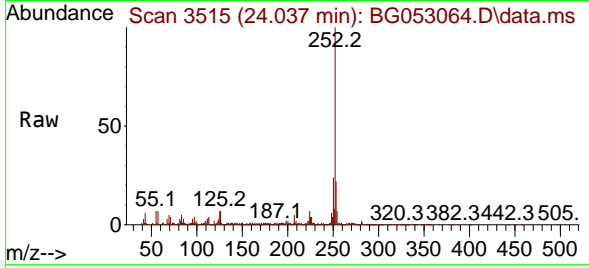


#89  
 Benzo(k)fluoranthene  
 Concen: 26.642 ng  
 RT: 24.037 min Scan# 31  
 Delta R.T. -0.064 min  
 Lab File: BG053064.D  
 Acq: 6 Apr 2022 21:02

Instrument :  
 BNA\_G  
 ClientSampleId :  
 TP-3DL

Tgt Ion:252 Resp: 319412

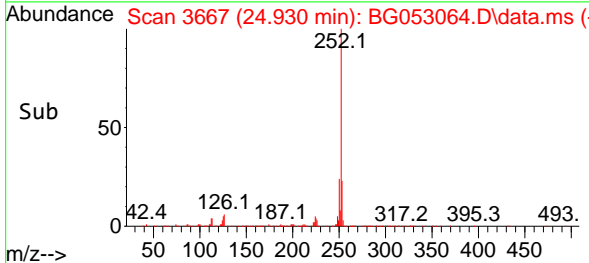
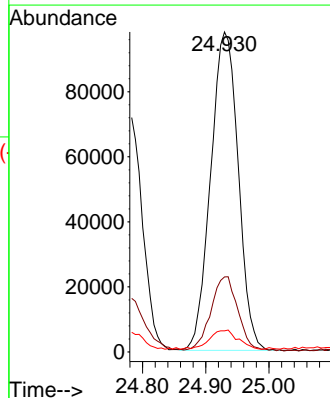
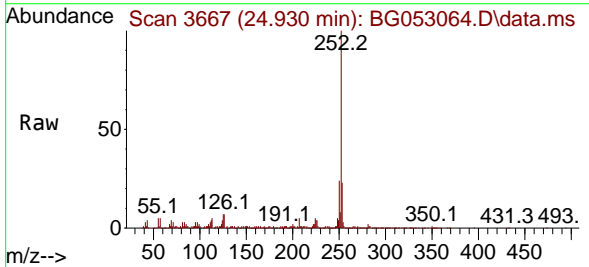
| Ion | Ratio | Lower | Upper |
|-----|-------|-------|-------|
| 252 | 100   |       |       |
| 253 | 22.3  | 17.4  | 26.0  |
| 125 | 7.0   | 5.0   | 7.4   |

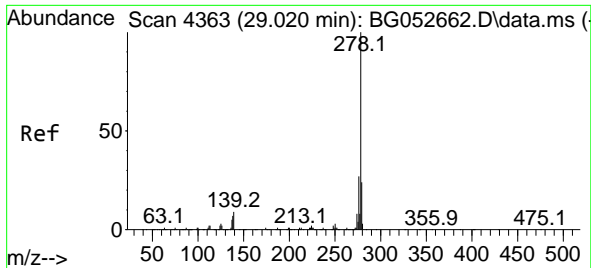


#90  
 Benzo(a)pyrene  
 Concen: 28.740 ng  
 RT: 24.930 min Scan# 3667  
 Delta R.T. 0.001 min  
 Lab File: BG053064.D  
 Acq: 6 Apr 2022 21:02

Tgt Ion:252 Resp: 296446

| Ion | Ratio | Lower | Upper |
|-----|-------|-------|-------|
| 252 | 100   |       |       |
| 253 | 23.5  | 18.4  | 27.6  |
| 125 | 6.6   | 5.6   | 8.4   |



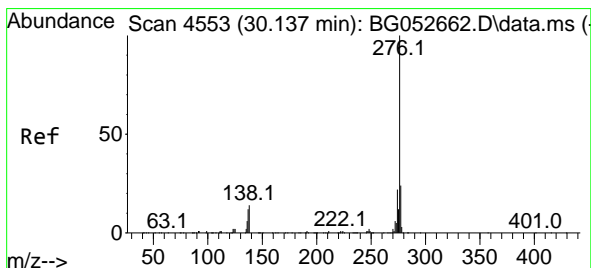
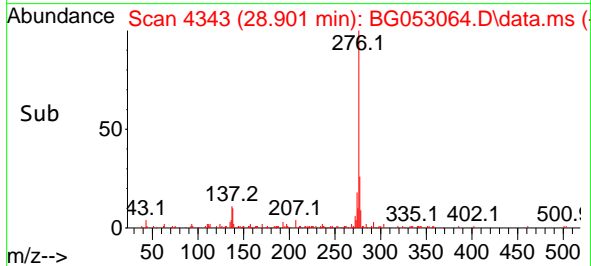
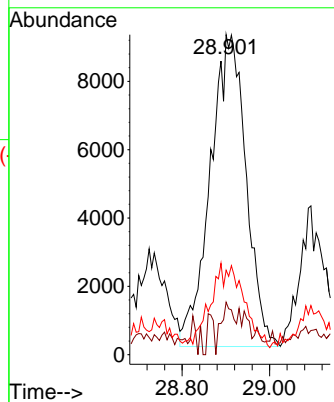
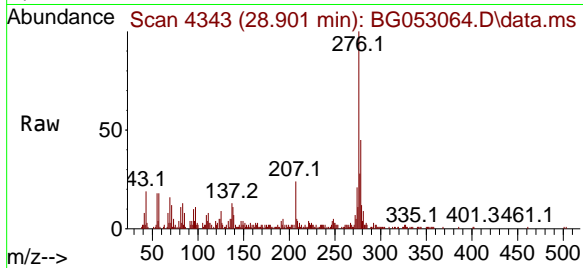


#91  
 Dibenzo(a,h)anthracene  
 Concen: 4.679 ng  
 RT: 28.901 min Scan# 41  
 Delta R.T. -0.029 min  
 Lab File: BG053064.D  
 Acq: 6 Apr 2022 21:02

Instrument :  
 BNA\_G  
 ClientSampleId :  
 TP-3DL

Tgt Ion:278 Resp: 51793

| Ion | Ratio | Lower | Upper |
|-----|-------|-------|-------|
| 278 | 100   |       |       |
| 139 | 16.4  | 7.8   | 11.6# |
| 279 | 26.4  | 18.5  | 27.7  |



#92  
 Benzo(g,h,i)perylene  
 Concen: 21.133 ng  
 RT: 30.052 min Scan# 4539  
 Delta R.T. 0.001 min  
 Lab File: BG053064.D  
 Acq: 6 Apr 2022 21:02

Tgt Ion:276 Resp: 231447

| Ion | Ratio | Lower | Upper |
|-----|-------|-------|-------|
| 276 | 100   |       |       |
| 277 | 24.2  | 18.2  | 27.2  |
| 138 | 11.9  | 9.1   | 13.7  |

