

Data Path : Z:\HPCHEM1\BNA\_G\DATA\BG041015\  
 Data File : BG016350.D  
 Acq On : 11 Apr 2015 12:17  
 Operator : TP/IZ  
 Sample : G1822-03MS  
 Misc :  
 ALS Vial : 28 Sample Multiplier: 1

Instrument :  
 BNA\_G  
 ClientSampleId :  
 F5-025MS

Quant Time: Apr 13 03:35:03 2015  
 Quant Method : Z:\HPCHEM1\BNA\_G\METHODS\8270-BG040615.M  
 Quant Title : ASP BNA STANDARDS FOR 5 POINT CALIBRATION  
 QLast Update : Tue Apr 07 04:17:17 2015  
 Response via : Initial Calibration

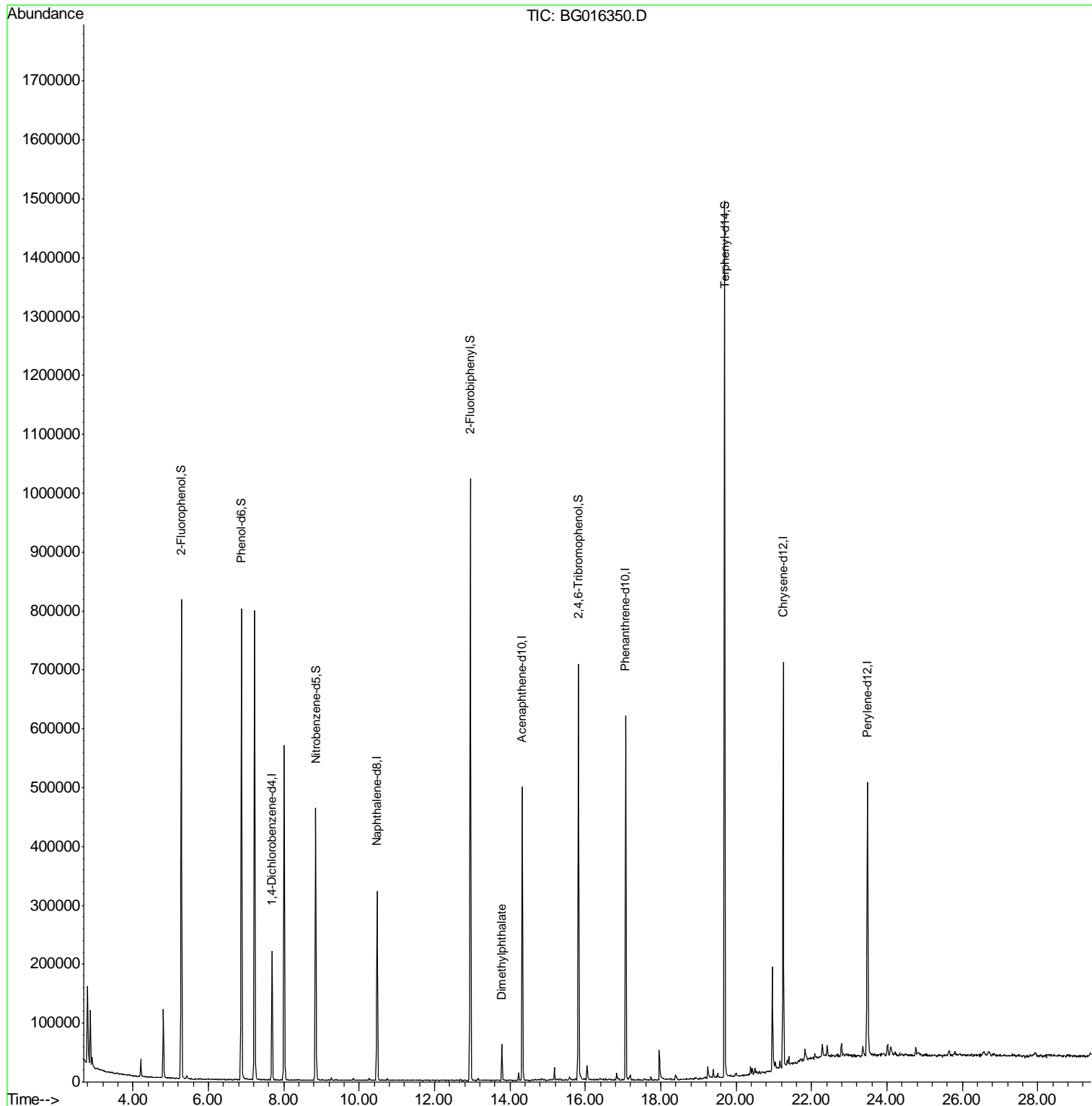
Internal Standards	R.T.	QIon	Response	Conc	Units	Dev(Min)
1) 1,4-Dichlorobenzene-d4	7.69	152	60602	20.00	ng	-0.01
21) Naphthalene-d8	10.47	136	274801	20.00	ng	-0.02
38) Acenaphthene-d10	14.33	164	163803	20.00	ng	-0.01
63) Phenanthrene-d10	17.07	188	330358	20.00	ng	-0.01
75) Chrysene-d12	21.25	240	287011	20.00	ng	-0.01
86) Perylene-d12	23.49	264	262248	20.00	ng	-0.02
System Monitoring Compounds						
5) 2-Fluorophenol	5.28	112	372894	97.11	ng	0.00
7) Phenol-d6	6.88	99	534236	92.68	ng	0.00
23) Nitrobenzene-d5	8.85	82	274803	57.93	ng	-0.01
41) 2,4,6-Tribromophenol	15.82	330	101287	91.43	ng	-0.01
44) 2-Fluorobiphenyl	12.95	172	505752	52.57	ng	-0.02
78) Terphenyl-d14	19.70	244	595059	48.52	ng	-0.01
Target Compounds						Qvalue
49) Dimethylphthalate	13.79	163	39144	3.26	ng	98

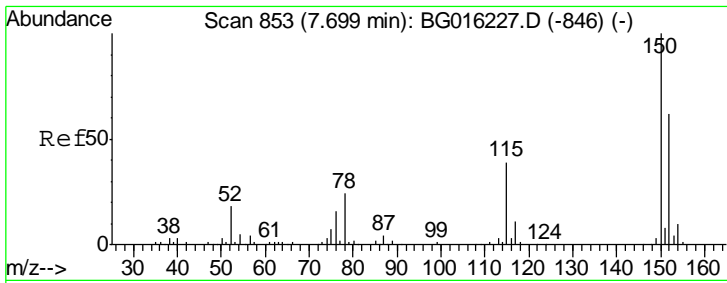
(#) = qualifier out of range (m) = manual integration (+) = signals summed

Data Path : Z:\HPCHEM1\BNA\_G\DATA\BG041015\  
Data File : BG016350.D  
Acq On : 11 Apr 2015 12:17  
Operator : TP/IZ  
Sample : G1822-03MS  
Misc :  
ALS Vial : 28 Sample Multiplier: 1

Instrument :  
BNA\_G  
ClientSampleId :  
F5-025MS

Quant Time: Apr 13 03:35:03 2015  
Quant Method : Z:\HPCHEM1\BNA\_G\METHODS\8270-BG040615.M  
Quant Title : ASP BNA STANDARDS FOR 5 POINT CALIBRATION  
QLast Update : Tue Apr 07 04:17:17 2015  
Response via : Initial Calibration

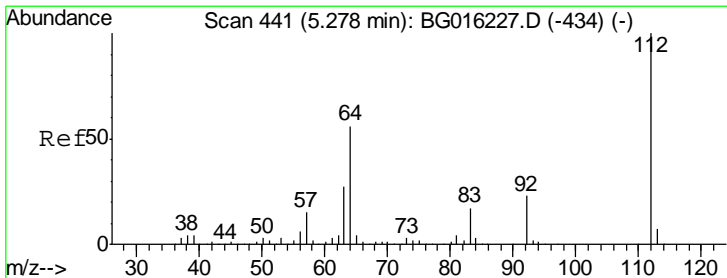
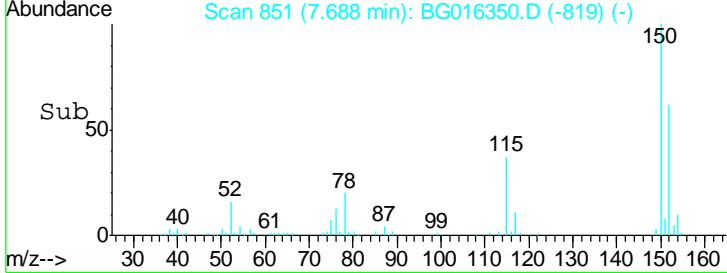
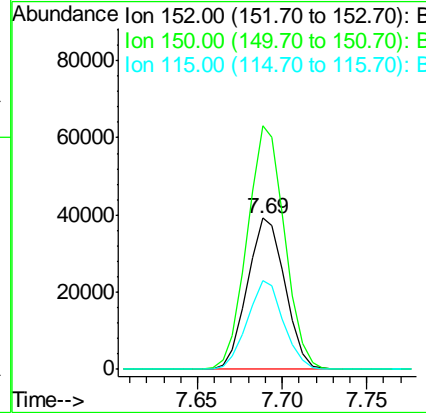
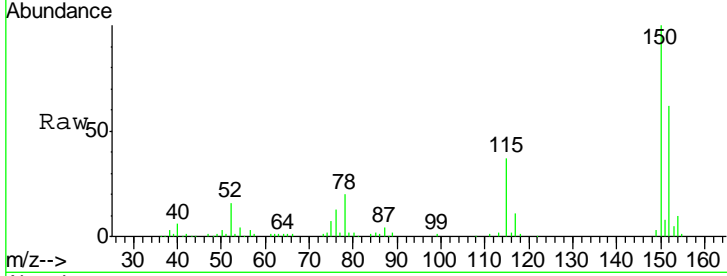




#1  
 1,4-Dichlorobenzene-d4  
 Concen: 20.00 ng  
 RT: 7.69 min Scan# 851  
 Delta R.T. -0.01 min  
 Lab File: BG016350.D  
 Acq: 11 Apr 2015 12:17

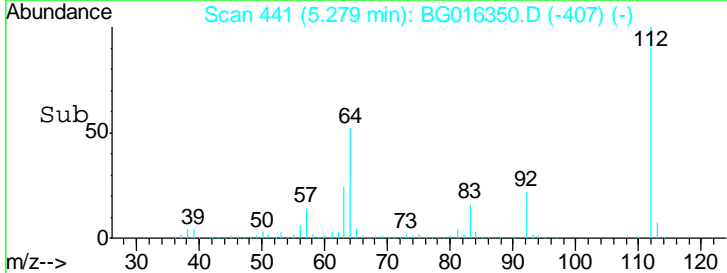
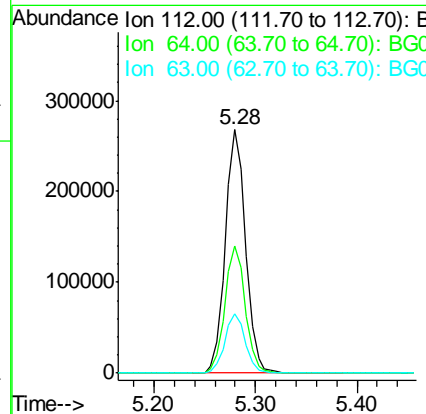
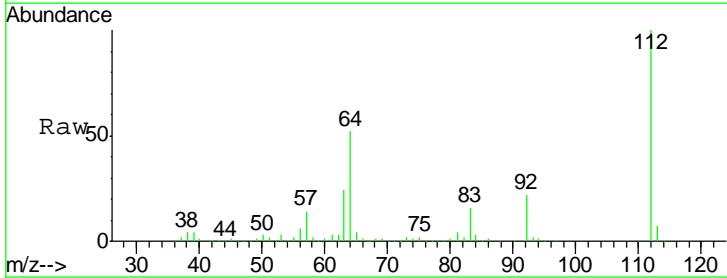
Instrument :  
 BNA\_G  
 ClientSampleID :  
 F5-025MS

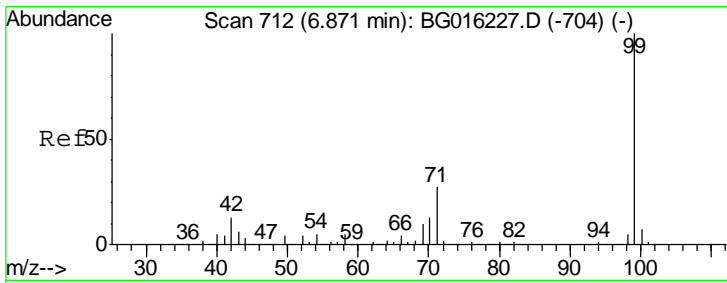
Tgt Ion	Resp	Lower	Upper
152	60602		
150	161.4	130.1	195.1
115	59.1	50.5	75.7



#5  
 2-Fluorophenol  
 Concen: 97.11 ng  
 RT: 5.28 min Scan# 441  
 Delta R.T. 0.00 min  
 Lab File: BG016350.D  
 Acq: 11 Apr 2015 12:17

Tgt Ion	Resp	Lower	Upper
112	372894		
64	52.4	44.5	66.7
63	24.5	21.4	32.0

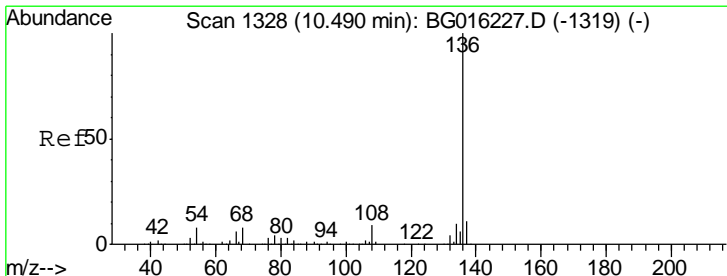
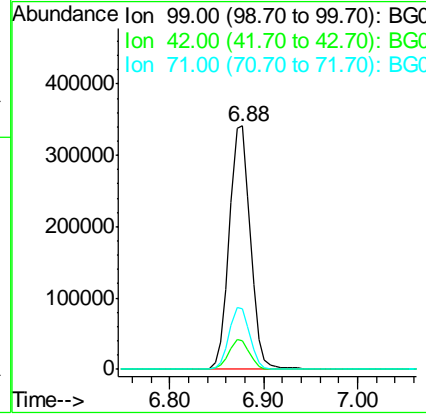
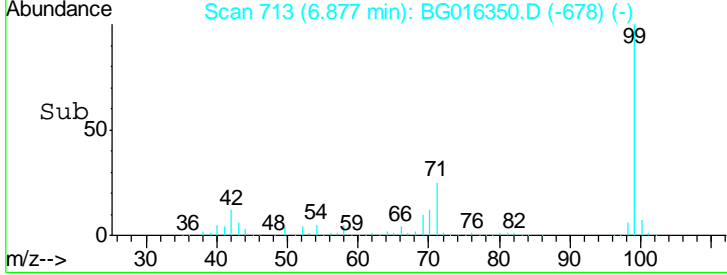
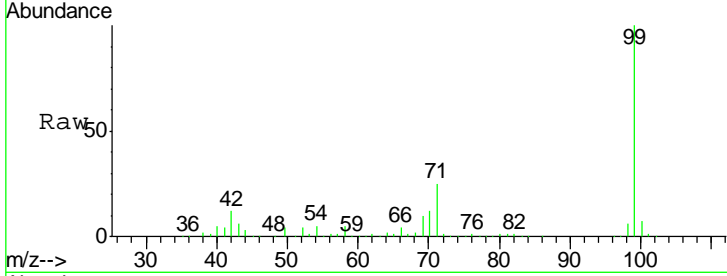




#7  
 Phenol-d6  
 Concen: 92.68 ng  
 RT: 6.88 min Scan# 713  
 Delta R.T. 0.01 min  
 Lab File: BG016350.D  
 Acq: 11 Apr 2015 12:17

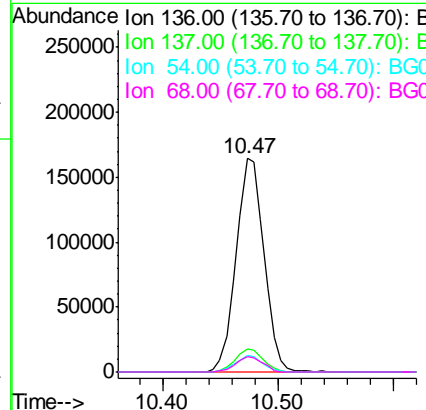
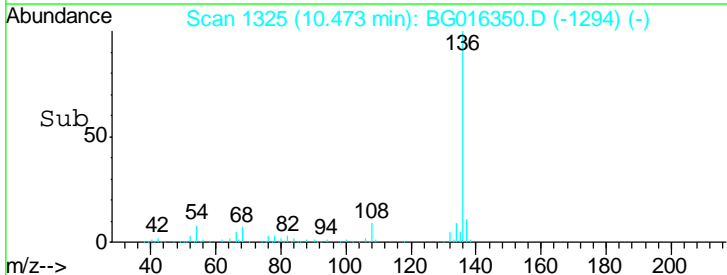
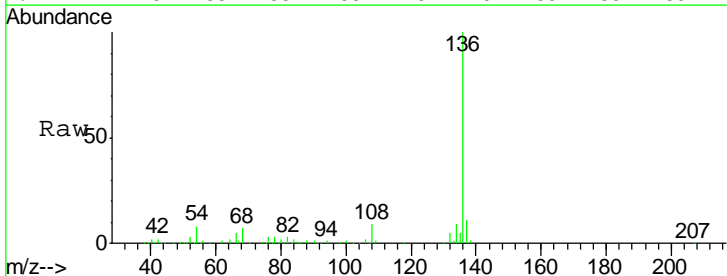
**Instrument :**  
 BNA\_G  
**ClientSampled :**  
 F5-025MS

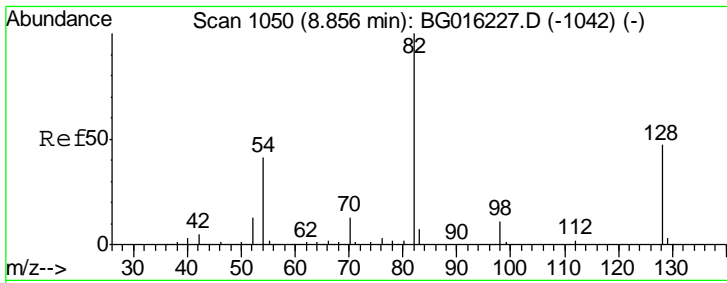
Tgt Ion	Resp	Lower	Upper
99	100		
42	11.7	10.0	15.0
71	25.1	21.5	32.3



#21  
 Naphthalene-d8  
 Concen: 20.00 ng  
 RT: 10.47 min Scan# 1325  
 Delta R.T. -0.02 min  
 Lab File: BG016350.D  
 Acq: 11 Apr 2015 12:17

Tgt Ion	Resp	Lower	Upper
136	100		
137	10.8	8.7	13.1
54	7.6	6.3	9.5
68	7.2	6.5	9.7

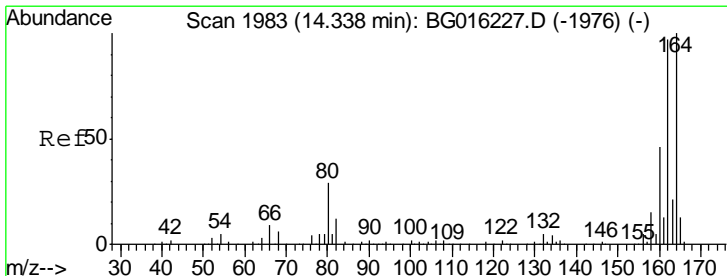
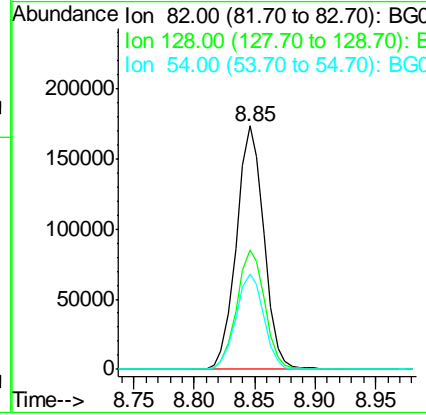
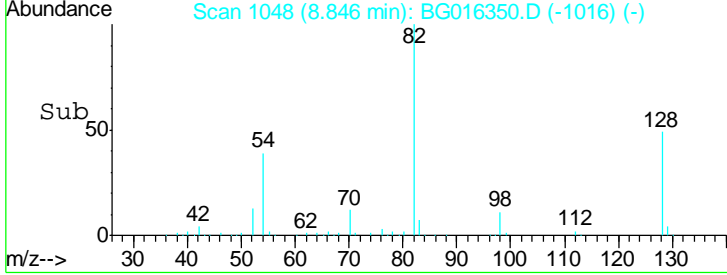
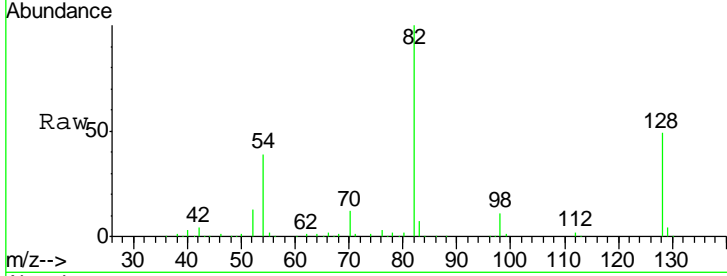




#23  
 Nitrobenzene-d5  
 Concen: 57.93 ng  
 RT: 8.85 min Scan# 1048  
 Delta R.T. -0.01 min  
 Lab File: BG016350.D  
 Acq: 11 Apr 2015 12:17

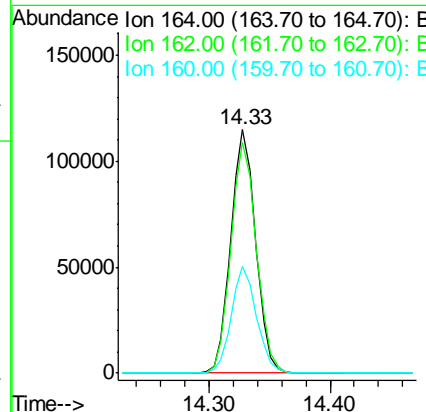
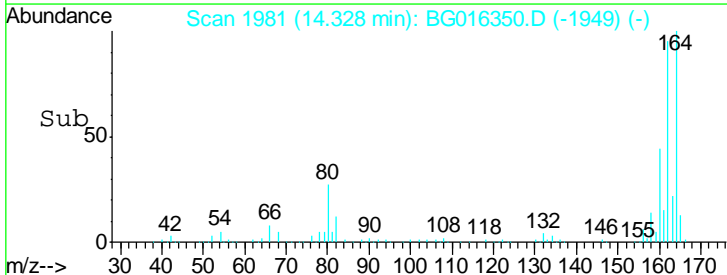
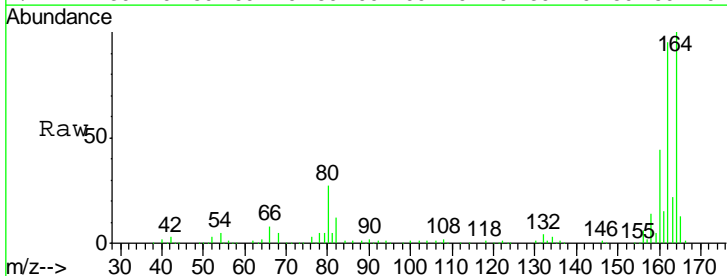
Instrument :  
 BNA\_G  
 ClientSampled :  
 F5-025MS

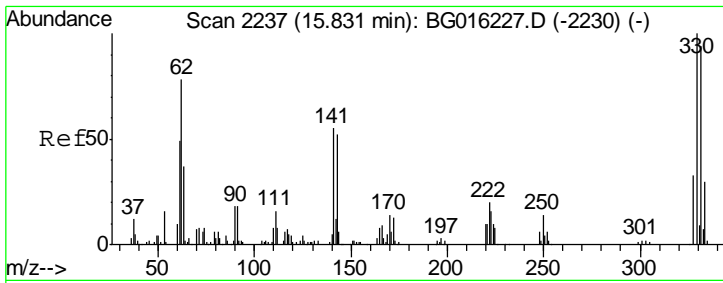
Tgt Ion	Resp	Lower	Upper
82	274803		
128	49.0	37.8	56.8
54	39.1	32.6	49.0



#38  
 Acenaphthene-d10  
 Concen: 20.00 ng  
 RT: 14.33 min Scan# 1981  
 Delta R.T. -0.01 min  
 Lab File: BG016350.D  
 Acq: 11 Apr 2015 12:17

Tgt Ion	Resp	Lower	Upper
164	163803		
162	94.7	77.3	115.9
160	43.6	36.7	55.1

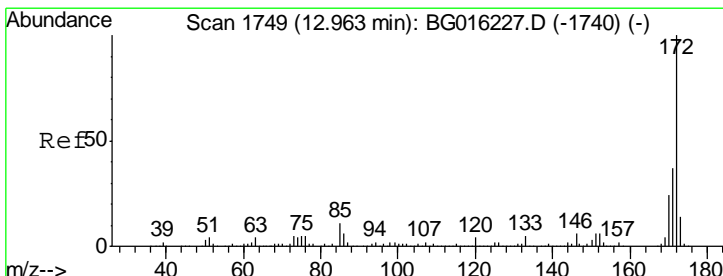
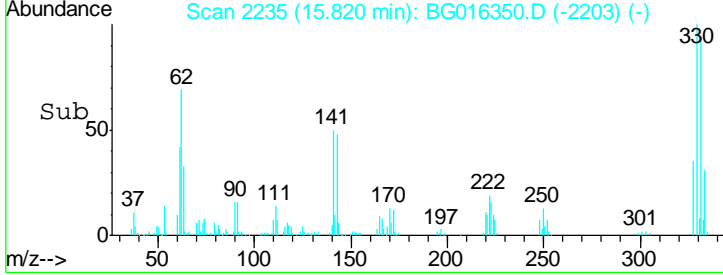
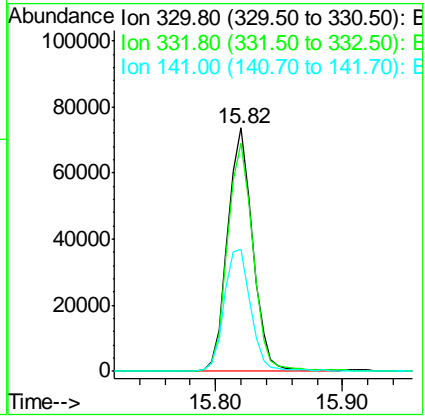
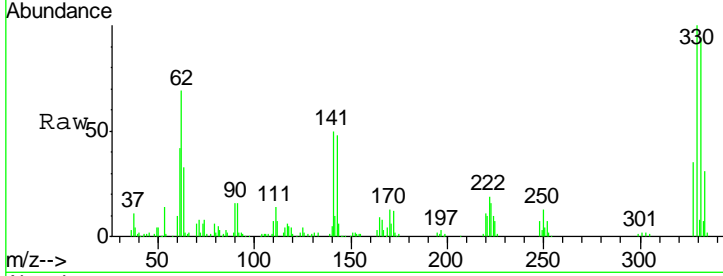




#41  
 2,4,6-Tribromophenol  
 Concen: 91.43 ng  
 RT: 15.82 min Scan# 2235  
 Delta R.T. -0.01 min  
 Lab File: BG016350.D  
 Acq: 11 Apr 2015 12:17

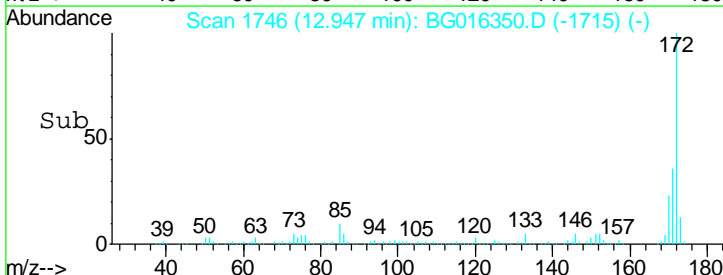
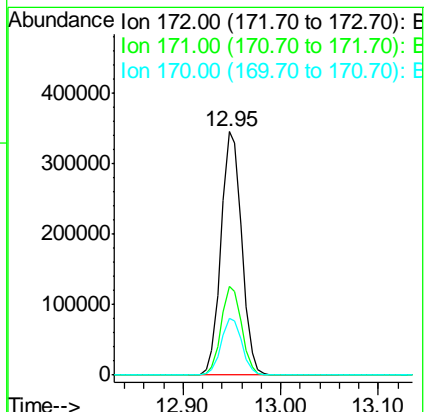
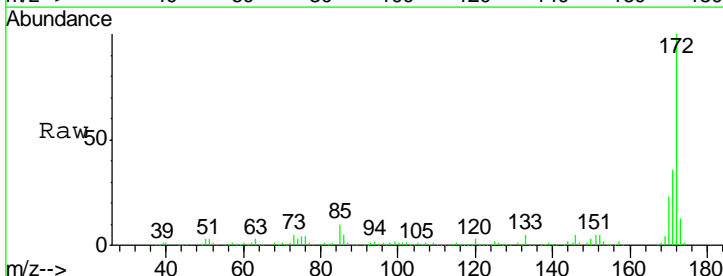
Instrument :  
 BNA\_G  
 ClientSampled :  
 F5-025MS

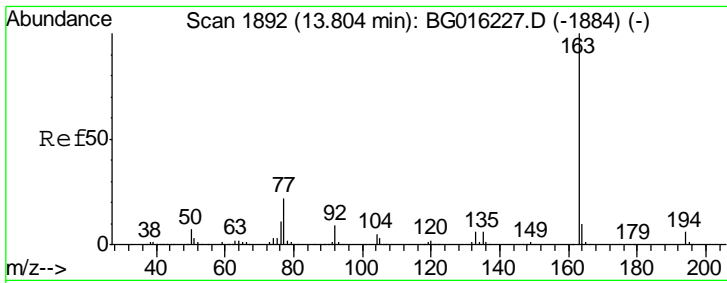
Tgt Ion	Resp	Lower	Upper
330	101287		
332	95.9	75.8	113.6
141	52.9	46.6	69.8



#44  
 2-Fluorobiphenyl  
 Concen: 52.57 ng  
 RT: 12.95 min Scan# 1746  
 Delta R.T. -0.02 min  
 Lab File: BG016350.D  
 Acq: 11 Apr 2015 12:17

Tgt Ion	Resp	Lower	Upper
172	505752		
171	36.3	29.6	44.4
170	23.3	19.4	29.2

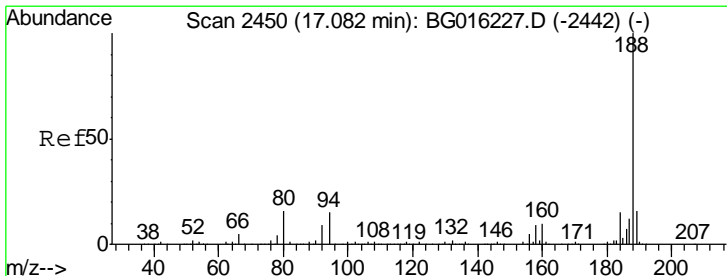
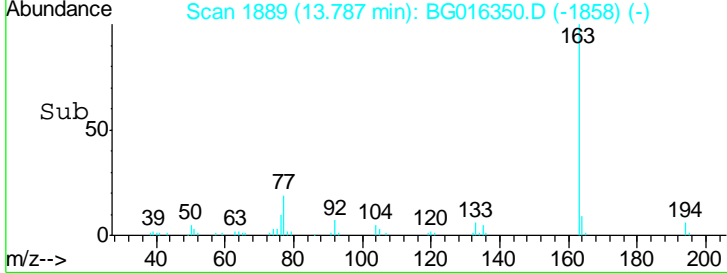
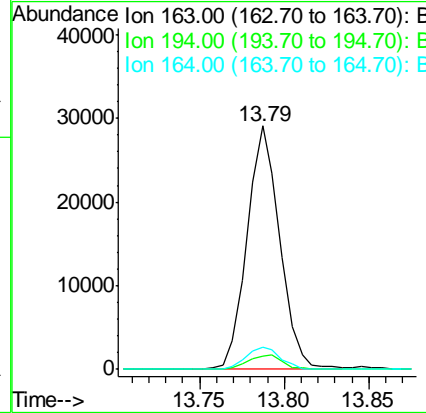
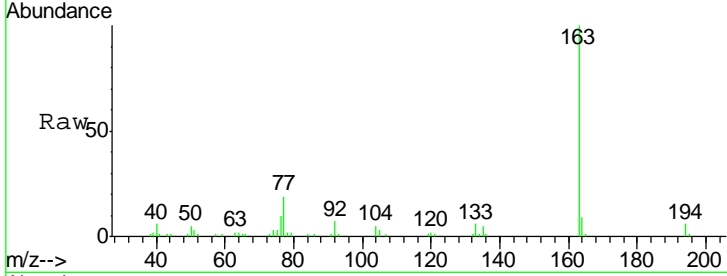




#49  
 Dimethylphthalate  
 Concen: 3.26 ng  
 RT: 13.79 min Scan# 1889  
 Delta R.T. -0.02 min  
 Lab File: BG016350.D  
 Acq: 11 Apr 2015 12:17

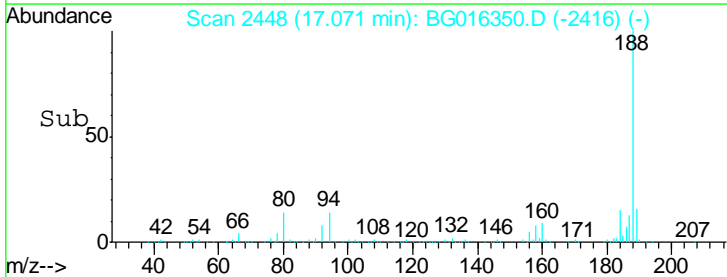
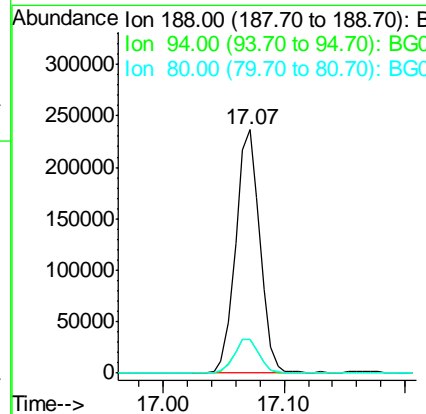
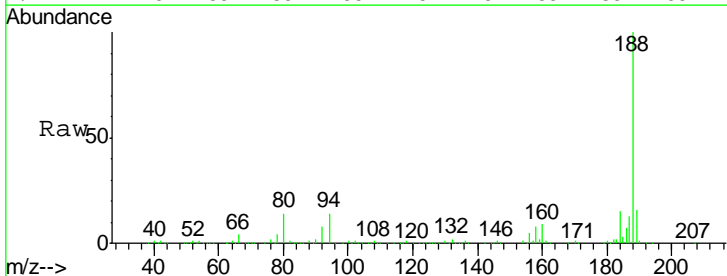
Instrument :  
 BNA\_G  
 ClientSampled :  
 F5-025MS

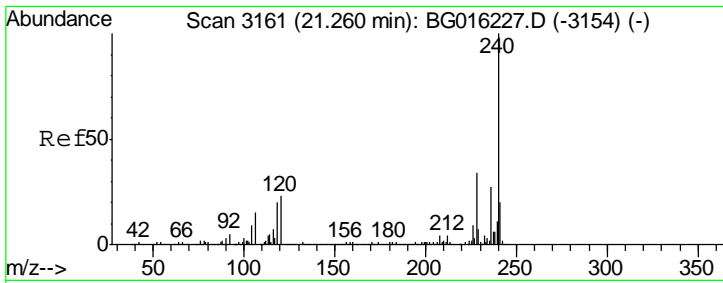
Tgt Ion	Resp	Lower	Upper
163	39144		
194	5.6	5.0	7.4
164	9.3	8.2	12.4



#63  
 Phenanthrene-d10  
 Concen: 20.00 ng  
 RT: 17.07 min Scan# 2448  
 Delta R.T. -0.01 min  
 Lab File: BG016350.D  
 Acq: 11 Apr 2015 12:17

Tgt Ion	Resp	Lower	Upper
188	330358		
94	13.7	12.2	18.4
80	13.8	12.8	19.2

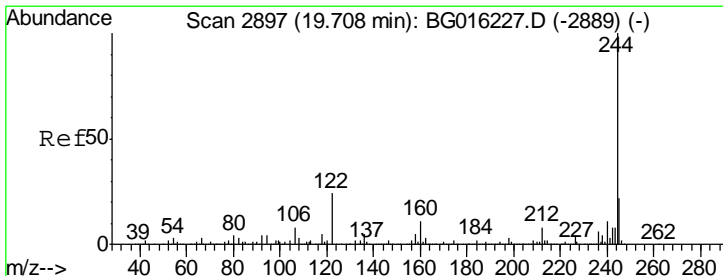
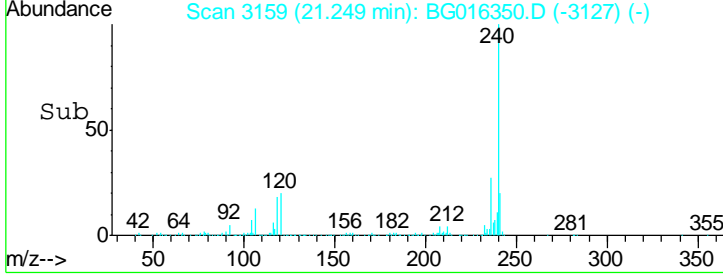
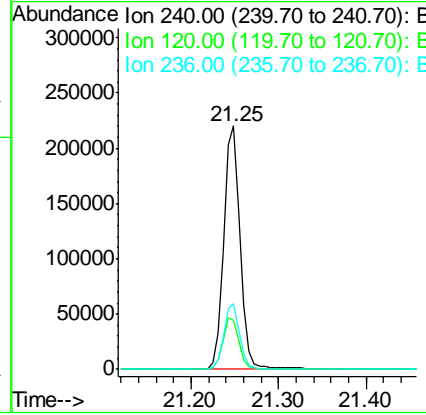
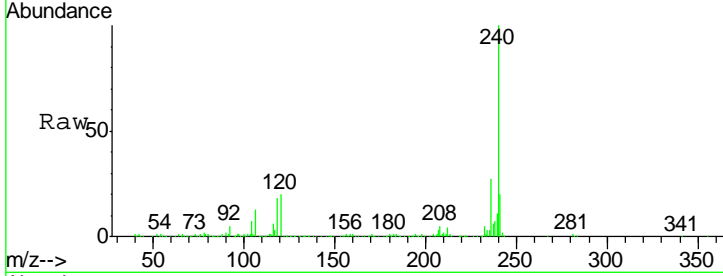




#75  
 Chrysene-d12  
 Concen: 20.00 ng  
 RT: 21.25 min Scan# 3159  
 Delta R.T. -0.01 min  
 Lab File: BG016350.D  
 Acq: 11 Apr 2015 12:17

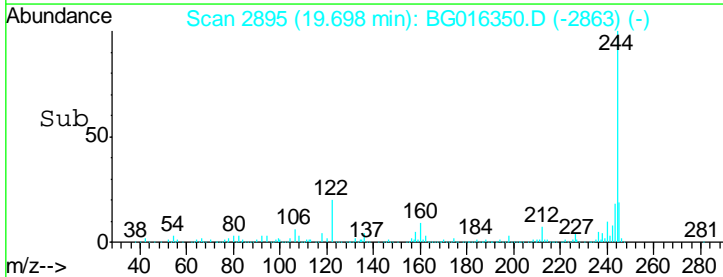
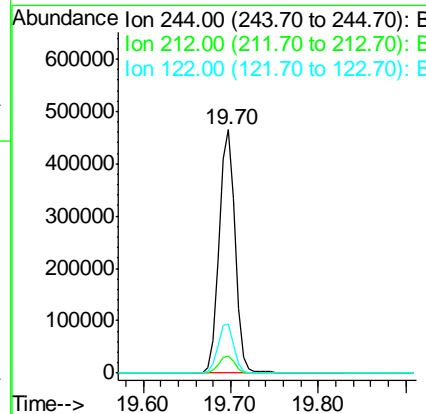
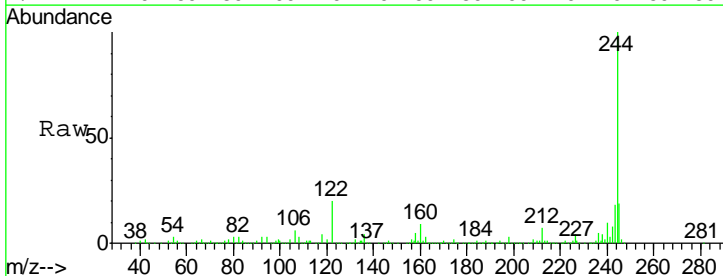
**Instrument :**  
 BNA\_G  
**ClientSampled :**  
 F5-025MS

Tgt Ion	Resp	Lower	Upper
240	100		
120	20.1	18.6	28.0
236	27.0	21.7	32.5

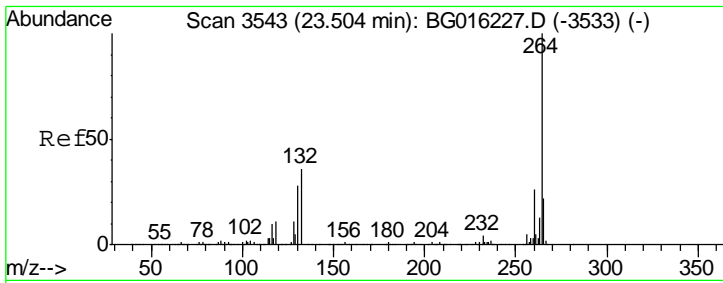


#78  
 Terphenyl-d14  
 Concen: 48.52 ng  
 RT: 19.70 min Scan# 2895  
 Delta R.T. -0.01 min  
 Lab File: BG016350.D  
 Acq: 11 Apr 2015 12:17

Tgt Ion	Resp	Lower	Upper
244	100		
212	7.2	6.6	9.8
122	20.0	19.1	28.7







#86  
 Perylene-d12  
 Concen: 20.00 ng  
 RT: 23.49 min Scan# 3540  
 Delta R.T. -0.02 min  
 Lab File: BG016350.D  
 Acq: 11 Apr 2015 12:17

Instrument :  
 BNA\_G  
 ClientSampled :  
 F5-025MS

Tgt Ion	Resp	Lower	Upper
264	100		
260	24.7	20.4	30.6
265	22.7	17.2	25.8

