

Data Path : Z:\svoasrv\HPCHEM1\BNA_G\Data\BG041024\
 Data File : BG060854.D
 Acq On : 10 Apr 2024 17:53
 Operator : MA/JU
 Sample : P2022-01MSD 10X
 Misc :
 ALS Vial : 10 Sample Multiplier: 1

Instrument :
 BNA_G
 ClientSampleId :
 SU-03-04082024MSD

Quant Time: Apr 10 18:32:02 2024
 Quant Method : Z:\svoasrv\HPCHEM1\BNA_G\Methods\8270-BG032924.M
 Quant Title : ASP BNA STANDARDS FOR 5 POINT CALIBRATION
 QLast Update : Sat Mar 30 03:12:26 2024
 Response via : Initial Calibration

Compound	R.T.	QIon	Response	Conc	Units	Dev(Min)
Internal Standards						
1) 1,4-Dichlorobenzene-d4	7.952	152	72045	20.000	ng	0.00
21) Naphthalene-d8	10.749	136	267231	20.000	ng	0.00
39) Acenaphthene-d10	14.580	164	188796	20.000	ng	0.00
64) Phenanthrene-d10	17.323	188	412562	20.000	ng	-0.02
76) Chrysene-d12	21.589	240	370515	20.000	ng	-0.02
86) Perylene-d12	24.726	264	382502	20.000	ng	-0.02
System Monitoring Compounds						
5) 2-Fluorophenol	5.537	112	35450	8.197	ng	0.00
7) Phenol-d6	7.112	99	48860	7.611	ng	0.00
23) Nitrobenzene-d5	9.098	82	33265	7.103	ng	-0.02
42) 2,4,6-Tribromophenol	16.066	330	23181	10.816	ng	0.00
45) 2-Fluorobiphenyl	13.199	172	80545	6.261	ng	-0.02
79) Terphenyl-d14	19.944	244	127981	6.082	ng	-0.02
Target Compounds						
2) 1,4-Dioxane	3.469	88	5060	2.854	ng	# 79
3) Pyridine	3.857	79	13705	2.562	ng	# 87
4) n-Nitrosodimethylamine	3.769	42	11352	3.551	ng	# 96
8) 2-Chlorophenol	7.517	128	17063	3.480	ng	95
10) Phenol	7.141	94	22750	3.472	ng	93
11) bis(2-Chloroethyl)ether	7.370	93	17373	3.284	ng	97
12) 1,3-Dichlorobenzene	7.846	146	19963	3.915	ng	92
13) 1,4-Dichlorobenzene	7.987	146	19987	3.842	ng	97
14) 1,2-Dichlorobenzene	8.305	146	18487	3.627	ng	96
15) Benzyl Alcohol	8.181	79	16573	3.187	ng	93
16) 2,2'-oxybis(1-Chloropr...	8.469	45	41292	3.459	ng	98
17) 2-Methylphenol	8.387	107	15148	3.063	ng	94
18) Hexachloroethane	9.033	117	5878	3.182	ng	# 68
19) n-Nitroso-di-n-propyla...	8.745	70	14457	2.953	ng	98
20) 3+4-Methylphenols	8.710	107	19850	2.931	ng	93
22) Acetophenone	8.763	105	29003	3.936	ng	# 96
24) Nitrobenzene	9.145	77	20000	6.388	ng	96
25) Isophorone	9.668	82	37486	3.475	ng	# 95
26) 2-Nitrophenol	9.862	139	7111	7.159	ng	94
27) 2,4-Dimethylphenol	9.914	122	12388	2.859	ng	94
28) bis(2-Chloroethoxy)met...	10.155	93	21960	3.448	ng	99
29) 2,4-Dichlorophenol	10.396	162	15395	3.869	ng	96
30) 1,2,4-Trichlorobenzene	10.608	180	18876	4.190	ng	# 94
31) Naphthalene	10.796	128	54933	3.800	ng	98
32) Benzoic acid	10.050	122	1003	7.134	ng	# 70
34) Hexachlorobutadiene	11.089	225	14406	4.798	ng	94
35) Caprolactam	11.630	113	3748	2.378	ng	# 88
36) 4-Chloro-3-methylphenol	12.024	107	17321	3.408	ng	94
37) 2-Methylnaphthalene	12.400	142	37617	3.540	ng	95
38) 1-Methylnaphthalene	12.623	142	33902	3.377	ng	100
40) 1,2,4,5-Tetrachloroben...	12.770	216	23568	4.342	ng	95
43) 2,4,6-Trichlorophenol	13.081	196	15770	4.512	ng	91
44) 2,4,5-Trichlorophenol	13.081	196	15770	3.781	ng	# 91
46) 1,1'-Biphenyl	13.410	154	51726	3.879	ng	92
47) 2-Chloronaphthalene	13.451	162	39400	3.889	ng	100
48) 2-Nitroaniline	13.645	65	12070	6.637	ng	91

Data Path : Z:\svoasrv\HPCHEM1\BNA_G\Data\BG041024\
 Data File : BG060854.D
 Acq On : 10 Apr 2024 17:53
 Operator : MA/JU
 Sample : P2022-01MSD 10X
 Misc :
 ALS Vial : 10 Sample Multiplier: 1

Instrument :
 BNA_G
 ClientSampleId :
 SU-03-04082024MSD

Quant Time: Apr 10 18:32:02 2024
 Quant Method : Z:\svoasrv\HPCHEM1\BNA_G\Methods\8270-BG032924.M
 Quant Title : ASP BNA STANDARDS FOR 5 POINT CALIBRATION
 QLast Update : Sat Mar 30 03:12:26 2024
 Response via : Initial Calibration

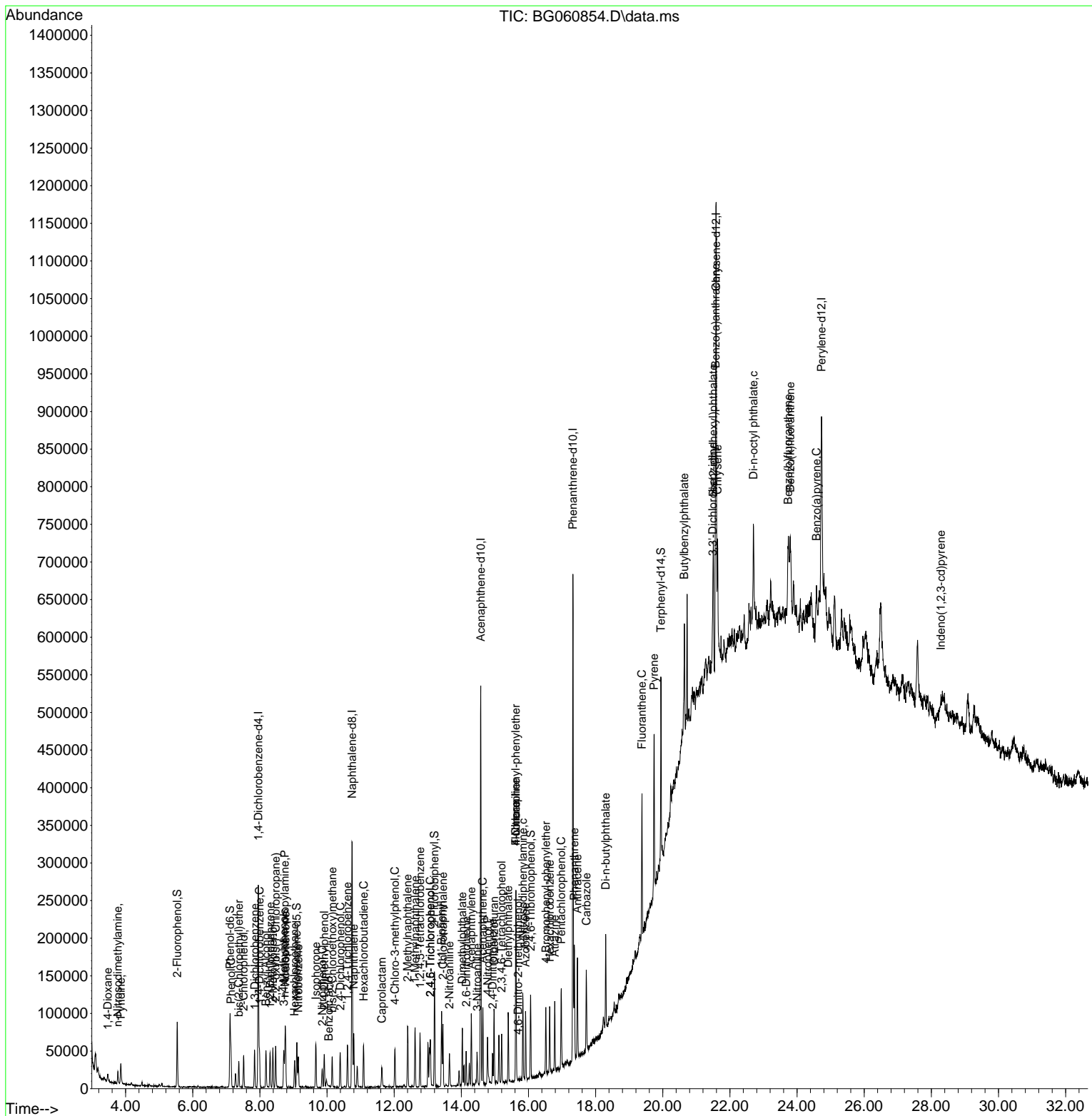
Compound	R.T.	QIon	Response	Conc	Units	Dev(Min)
49) Acenaphthylene	14.297	152	64027	3.761	ng	97
50) Dimethylphthalate	14.027	163	50027	3.352	ng	98
51) 2,6-Dinitrotoluene	14.145	165	7983	6.264	ng	93
52) Acenaphthene	14.638	154	37507	3.509	ng	96
53) 3-Nitroaniline	14.474	138	8785	5.670	ng	95
55) Dibenzofuran	14.973	168	63251	3.752	ng	99
56) 4-Nitrophenol	14.785	139	13719	6.289	ng	90
57) 2,4-Dinitrotoluene	14.932	165	10710	6.251	ng #	89
58) Fluorene	15.625	166	52260	3.862	ng	96
59) 2,3,4,6-Tetrachlorophenol	15.196	232	14235	3.916	ng	96
60) Diethylphthalate	15.396	149	47935	3.193	ng #	93
61) 4-Chlorophenyl-phenyle...	15.625	204	27332	3.818	ng	89
62) 4-Nitroaniline	15.625	138	11238	4.119	ng	88
63) Azobenzene	15.913	77	48276	3.300	ng	96
65) 4,6-Dinitro-2-methylph...	15.690	198	140	7.104	ng #	86
66) n-Nitrosodiphenylamine	15.831	169	42969	3.645	ng	99
67) 4-Bromophenyl-phenylether	16.518	248	17483	4.176	ng	96
68) Hexachlorobenzene	16.630	284	20508	4.339	ng	97
69) Atrazine	16.783	200	16654	4.040	ng	93
70) Pentachlorophenol	16.977	266	21787	7.064	ng	93
71) Phenanthrene	17.364	178	93518	4.359	ng	99
72) Anthracene	17.459	178	83156	3.816	ng	98
73) Carbazole	17.723	167	70487	3.669	ng	100
74) Di-n-butylphthalate	18.299	149	86118	3.595	ng #	99
75) Fluoranthene	19.380	202	120250	4.619	ng	94
78) Pyrene	19.738	202	127434	4.918	ng	99
80) Butylbenzylphthalate	20.643	149	36434	3.854	ng	97
81) Benzo(a)anthracene	21.571	228	114289	4.376	ng	94
82) 3,3'-Dichlorobenzidine	21.489	252	27589	3.128	ng #	92
83) Chrysene	21.630	228	111056	4.412	ng	96
84) Bis(2-ethylhexyl)phtha...	21.507	149	56264	3.734	ng #	96
85) Di-n-octyl phthalate	22.699	149	93263	3.800	ng #	84
87) Indeno(1,2,3-cd)pyrene	28.287	276	59427	2.206	ng #	62
88) Benzo(b)fluoranthene	23.733	252	99946	4.548	ng #	85
89) Benzo(k)fluoranthene	23.798	252	97448	4.333	ng #	77
90) Benzo(a)pyrene	24.580	252	89297	4.182	ng #	82

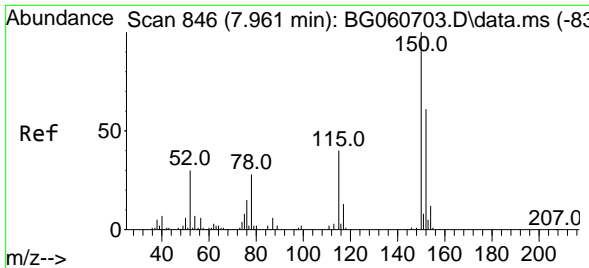
(#) = qualifier out of range (m) = manual integration (+) = signals summed

Data Path : Z:\svoasrv\HPCHEM1\BNA_G\Data\BG041024\
 Data File : BG060854.D
 Acq On : 10 Apr 2024 17:53
 Operator : MA/JU
 Sample : P2022-01MSD 10X
 Misc :
 ALS Vial : 10 Sample Multiplier: 1

Instrument :
 BNA_G
 ClientSampleId :
 SU-03-04082024MSD

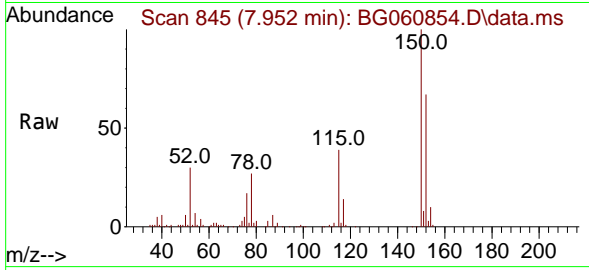
Quant Time: Apr 10 18:32:02 2024
 Quant Method : Z:\svoasrv\HPCHEM1\BNA_G\Methods\8270-BG032924.M
 Quant Title : ASP BNA STANDARDS FOR 5 POINT CALIBRATION
 QLast Update : Sat Mar 30 03:12:26 2024
 Response via : Initial Calibration



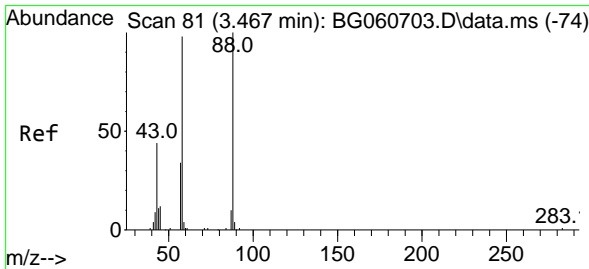
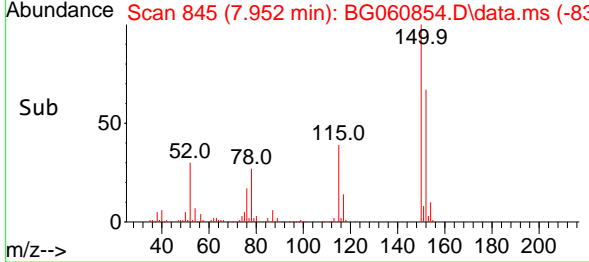
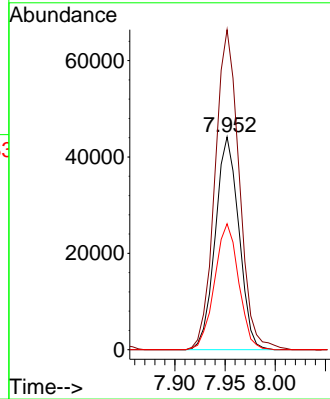


#1
 1,4-Dichlorobenzene-d4
 Concen: 20.000 ng
 RT: 7.952 min Scan# 84
 Delta R.T. -0.009 min
 Lab File: BG060854.D
 Acq: 10 Apr 2024 17:53

Instrument :
 BNA_G
 ClientSampleId :
 SU-03-04082024MSD

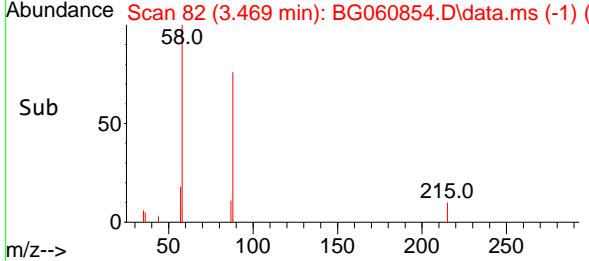
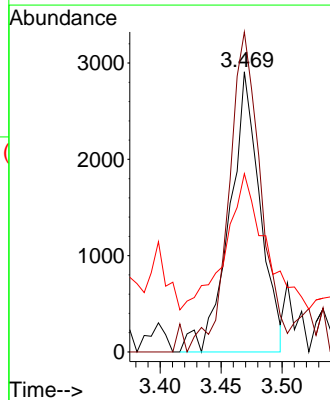
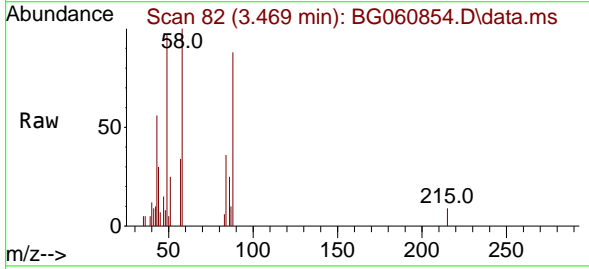


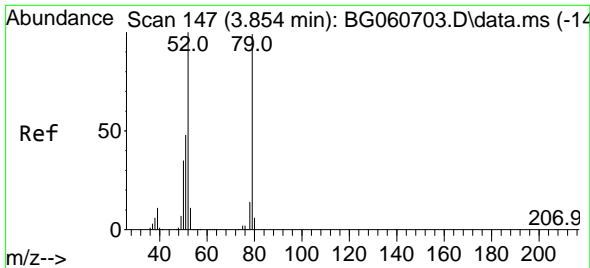
Tgt Ion:152 Resp: 72045
 Ion Ratio Lower Upper
 152 100
 150 150.4 130.2 195.4
 115 59.2 51.6 77.4



#2
 1,4-Dioxane
 Concen: 2.854 ng
 RT: 3.469 min Scan# 82
 Delta R.T. 0.002 min
 Lab File: BG060854.D
 Acq: 10 Apr 2024 17:53

Tgt Ion: 88 Resp: 5060
 Ion Ratio Lower Upper
 88 100
 58 119.2 80.9 121.3
 43 61.3 35.4 53.0#

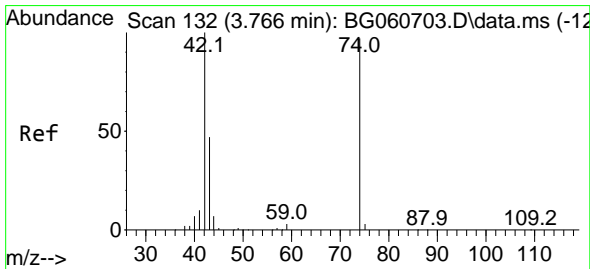
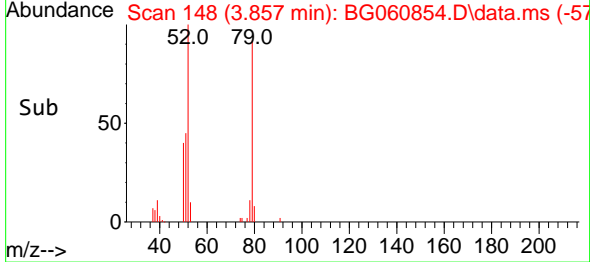
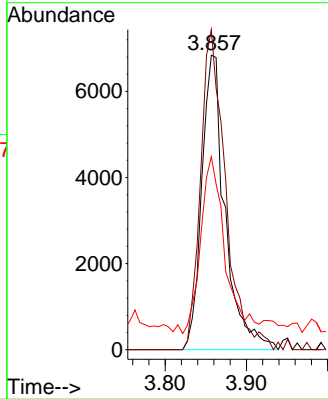
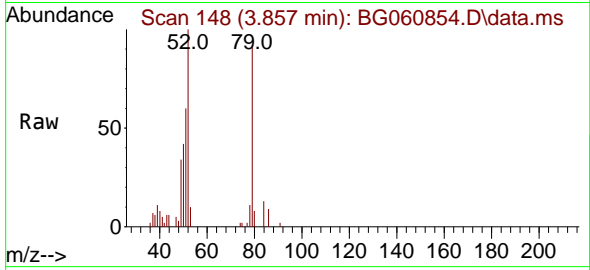




#3
 Pyridine
 Concen: 2.562 ng
 RT: 3.857 min Scan# 14
 Delta R.T. 0.002 min
 Lab File: BG060854.D
 Acq: 10 Apr 2024 17:53

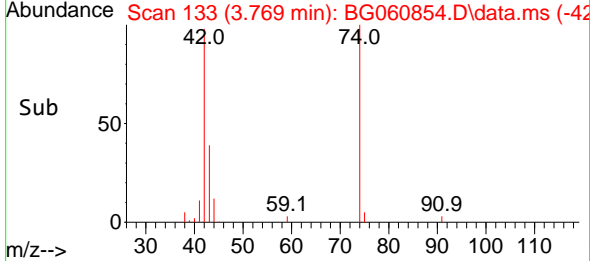
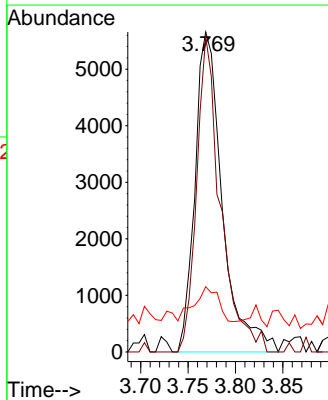
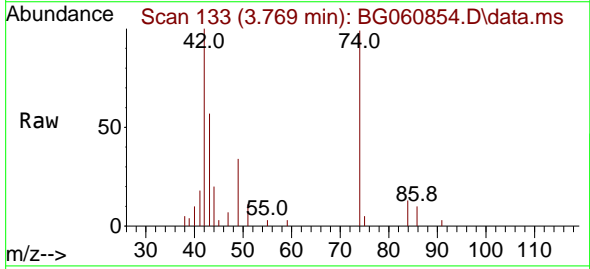
Instrument :
 BNA_G
 ClientSampleId :
 SU-03-04082024MSD

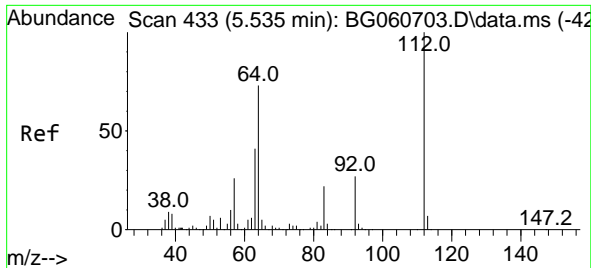
Tgt Ion	Resp	Lower	Upper
79	13705		
79	100		
52	108.6	80.6	120.8
51	65.5	39.1	58.7



#4
 n-Nitrosodimethylamine
 Concen: 3.551 ng
 RT: 3.769 min Scan# 133
 Delta R.T. 0.002 min
 Lab File: BG060854.D
 Acq: 10 Apr 2024 17:53

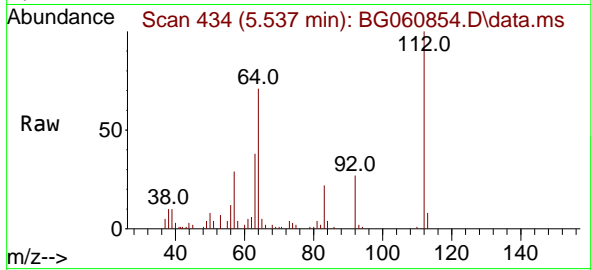
Tgt Ion	Resp	Lower	Upper
42	11352		
42	100		
74	98.6	77.8	116.8
44	20.4	6.8	10.2



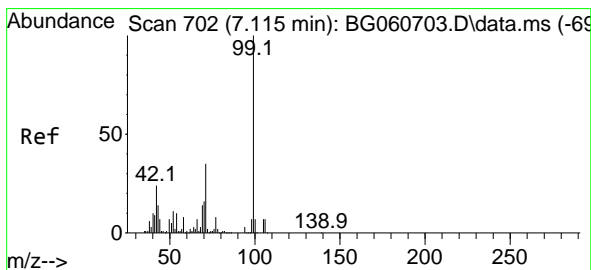
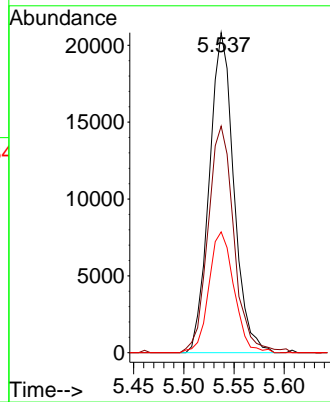
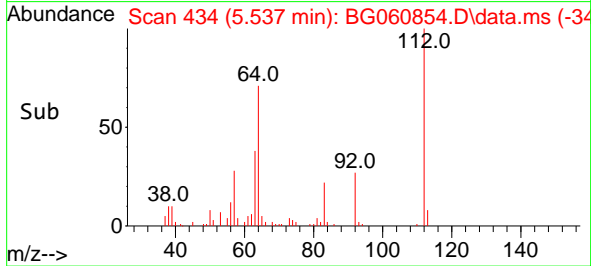


#5
 2-Fluorophenol
 Concen: 8.197 ng
 RT: 5.537 min Scan# 411
 Delta R.T. 0.002 min
 Lab File: BG060854.D
 Acq: 10 Apr 2024 17:53

Instrument :
 BNA_G
 ClientSampleId :
 SU-03-04082024MSD

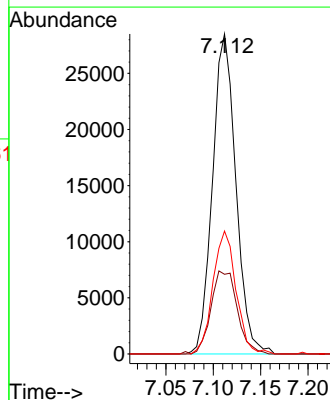
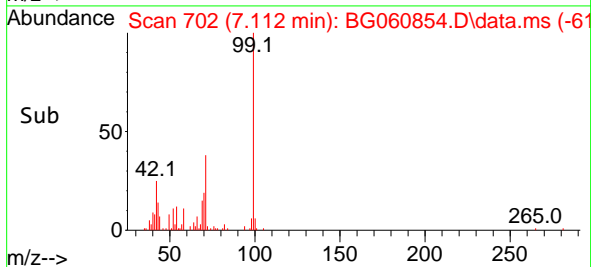
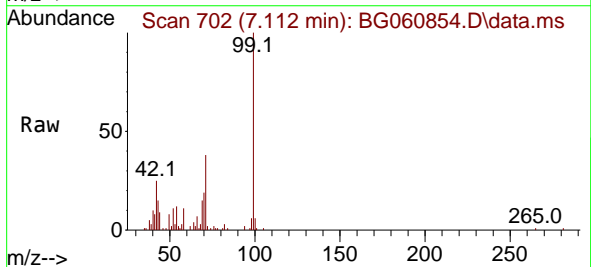


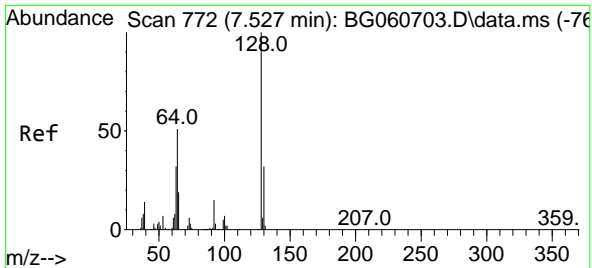
Tgt Ion: 112 Resp: 35450
 Ion Ratio Lower Upper
 112 100
 64 70.8 58.4 87.6
 63 37.8 32.7 49.1



#7
 Phenol-d6
 Concen: 7.611 ng
 RT: 7.112 min Scan# 702
 Delta R.T. -0.004 min
 Lab File: BG060854.D
 Acq: 10 Apr 2024 17:53

Tgt Ion: 99 Resp: 48860
 Ion Ratio Lower Upper
 99 100
 42 24.9 19.4 29.2
 71 38.4 28.2 42.2

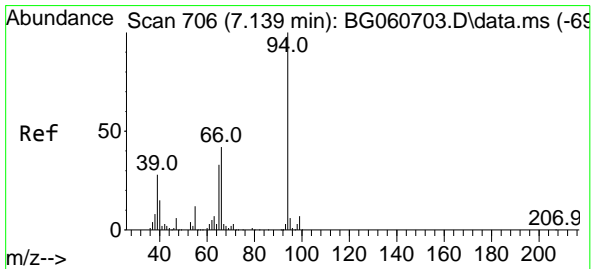
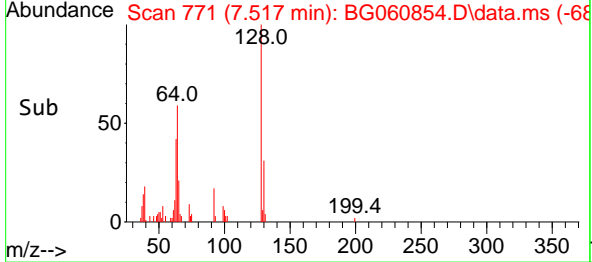
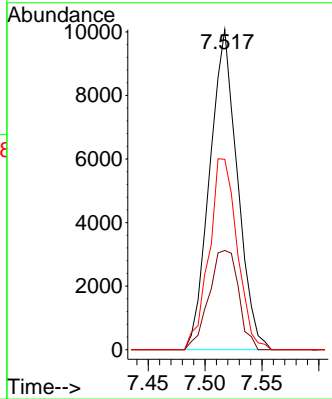
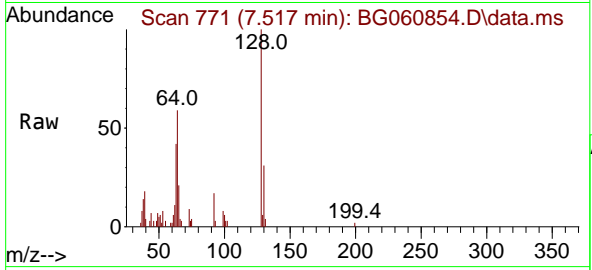




#8
 2-Chlorophenol
 Concen: 3.480 ng
 RT: 7.517 min Scan# 71
 Delta R.T. -0.009 min
 Lab File: BG060854.D
 Acq: 10 Apr 2024 17:53

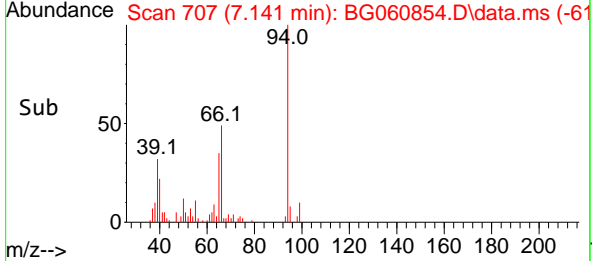
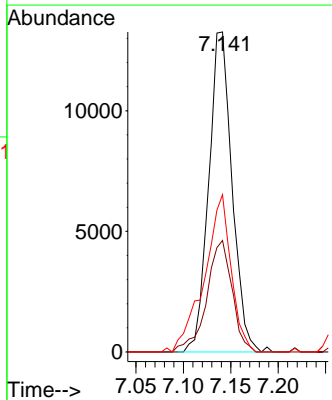
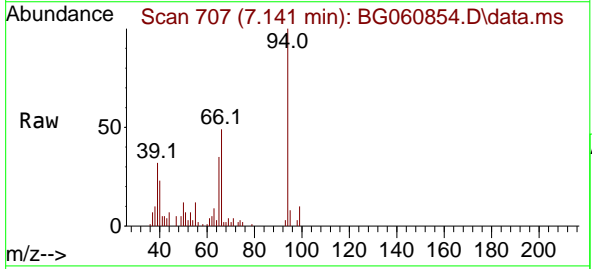
Instrument : BNA_G
 ClientSampleId : SU-03-04082024MSD

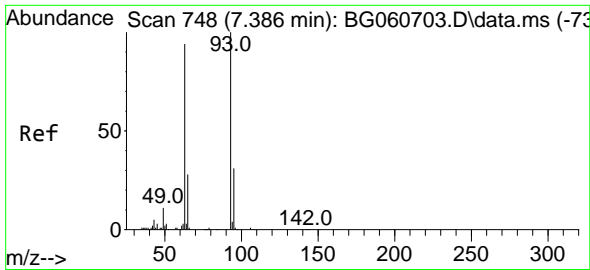
Tgt Ion	Resp	Lower	Upper
128	17063		
128	100		
130	31.0	12.3	52.3
64	59.5	35.0	75.0



#10
 Phenol
 Concen: 3.472 ng
 RT: 7.141 min Scan# 707
 Delta R.T. 0.002 min
 Lab File: BG060854.D
 Acq: 10 Apr 2024 17:53

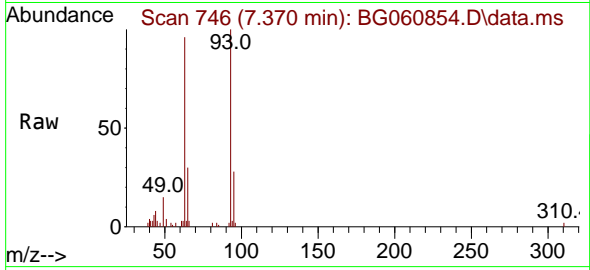
Tgt Ion	Resp	Lower	Upper
94	22750		
94	100		
65	34.9	13.3	53.3
66	49.2	22.9	62.9



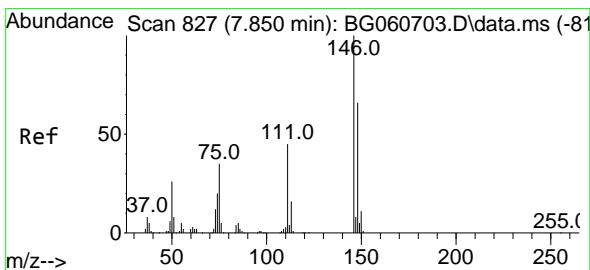
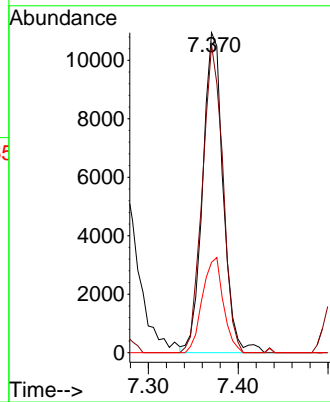
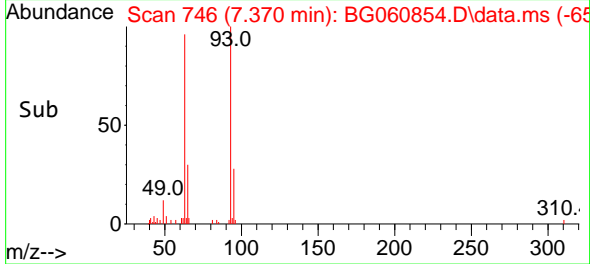


#11
 bis(2-Chloroethyl)ether
 Concen: 3.284 ng
 RT: 7.370 min Scan# 746
 Delta R.T. -0.015 min
 Lab File: BG060854.D
 Acq: 10 Apr 2024 17:53

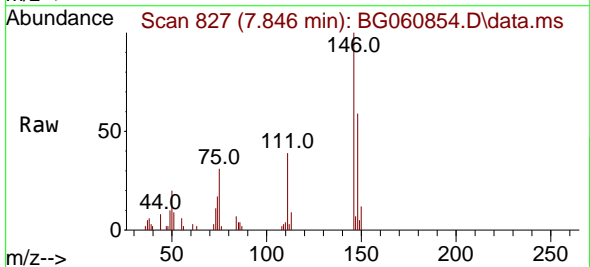
Instrument : BNA_G
 ClientSampleId : SU-03-04082024MSD



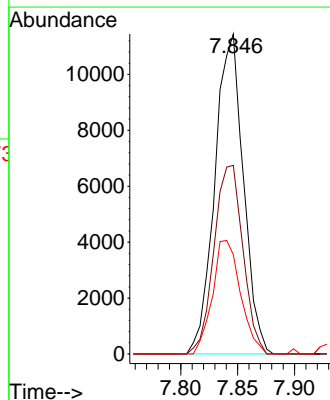
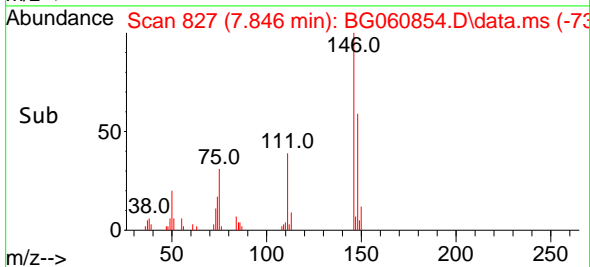
Tgt Ion	Resp	Lower	Upper
93	17373		
93	100		
63	96.2	73.7	113.7
95	28.2	11.2	51.2

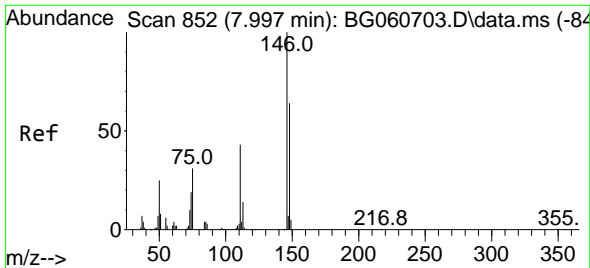


#12
 1,3-Dichlorobenzene
 Concen: 3.915 ng
 RT: 7.846 min Scan# 827
 Delta R.T. -0.004 min
 Lab File: BG060854.D
 Acq: 10 Apr 2024 17:53



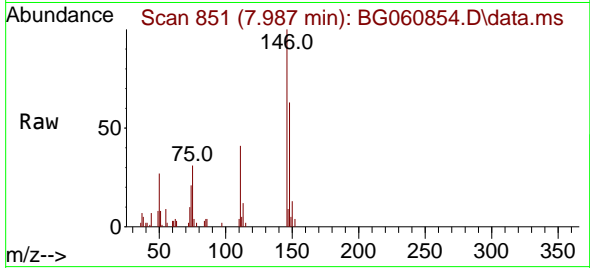
Tgt Ion	Resp	Lower	Upper
146	19963		
146	100		
148	59.0	53.0	79.4
75	31.1	28.1	42.1



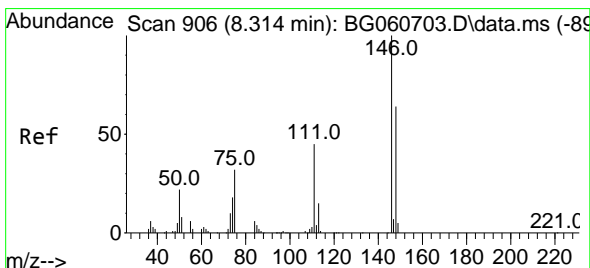
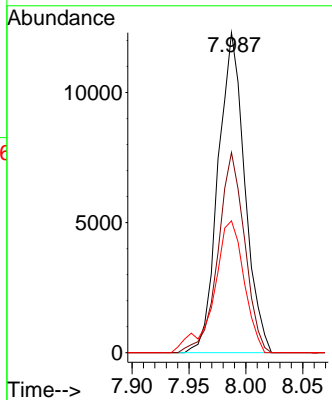
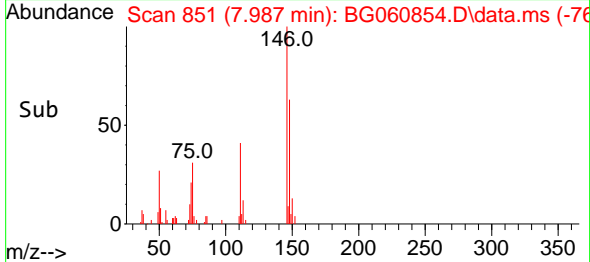


#13
 1,4-Dichlorobenzene
 Concen: 3.842 ng
 RT: 7.987 min Scan# 811
 Delta R.T. -0.009 min
 Lab File: BG060854.D
 Acq: 10 Apr 2024 17:53

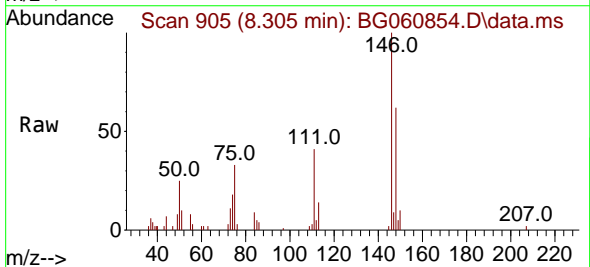
Instrument : BNA_G
 ClientSampleId : SU-03-04082024MSD



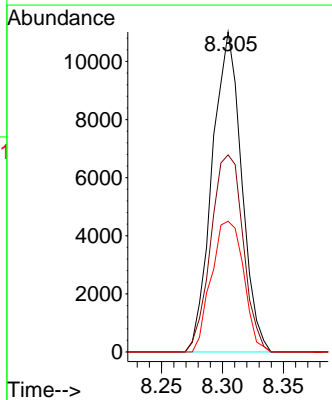
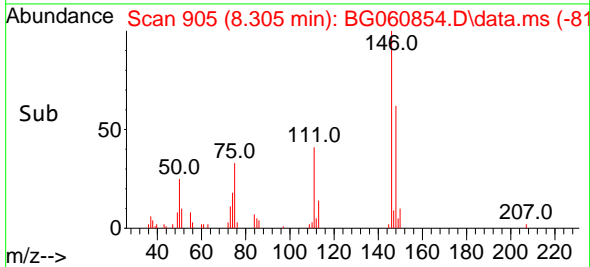
Tgt Ion:146 Resp: 19987
 Ion Ratio Lower Upper
 146 100
 148 62.5 51.1 76.7
 111 41.2 35.0 52.6

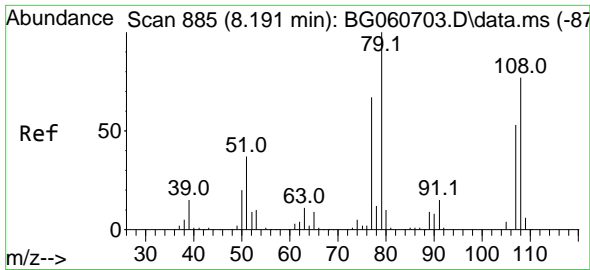


#14
 1,2-Dichlorobenzene
 Concen: 3.627 ng
 RT: 8.305 min Scan# 905
 Delta R.T. -0.009 min
 Lab File: BG060854.D
 Acq: 10 Apr 2024 17:53



Tgt Ion:146 Resp: 18487
 Ion Ratio Lower Upper
 146 100
 148 61.6 51.0 76.6
 111 40.8 36.0 54.0

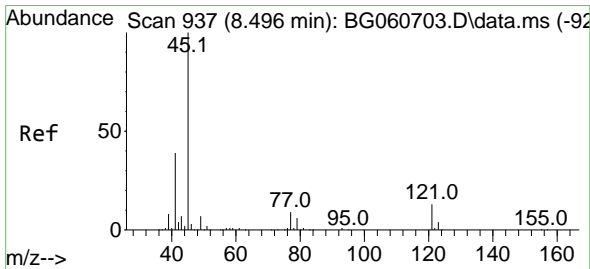
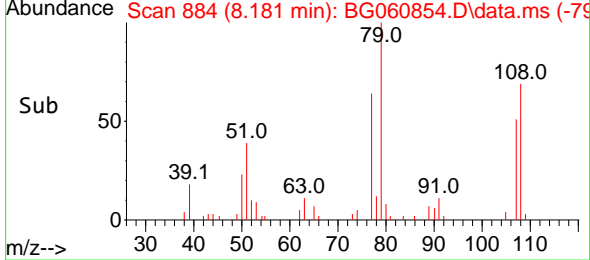
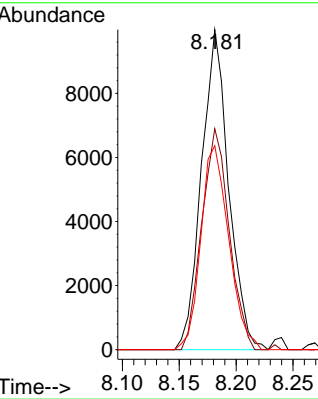
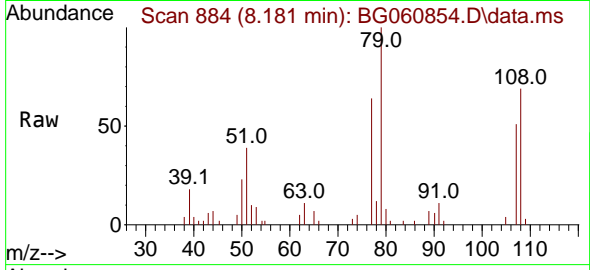




#15
 Benzyl Alcohol
 Concen: 3.187 ng
 RT: 8.181 min Scan# 811
 Delta R.T. -0.009 min
 Lab File: BG060854.D
 Acq: 10 Apr 2024 17:53

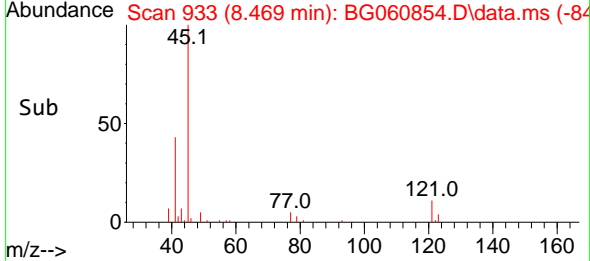
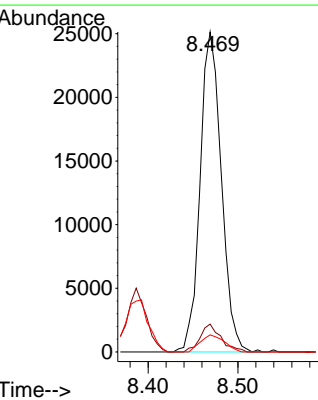
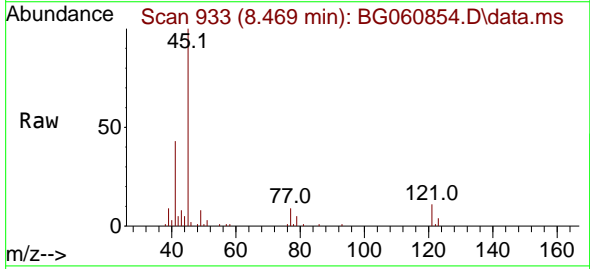
Instrument :
 BNA_G
 ClientSampleId :
 SU-03-04082024MSD

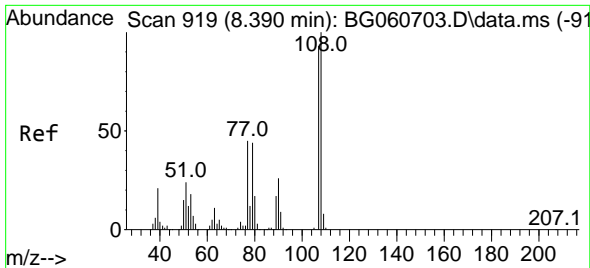
Tgt Ion	Resp	Lower	Upper
79	16573		
79	100		
108	69.0	61.4	92.0
77	63.7	53.6	80.4



#16
 2,2'-oxybis(1-Chloropropane)
 Concen: 3.459 ng
 RT: 8.469 min Scan# 933
 Delta R.T. -0.027 min
 Lab File: BG060854.D
 Acq: 10 Apr 2024 17:53

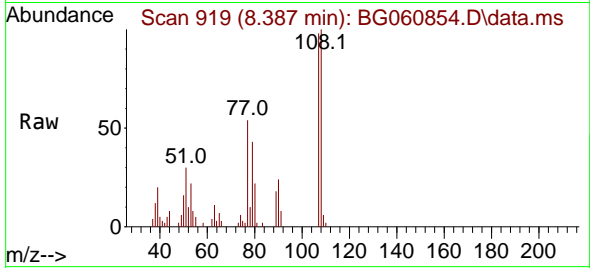
Tgt Ion	Resp	Lower	Upper
45	41292		
45	100		
77	8.7	0.0	29.1
79	5.3	0.0	26.5





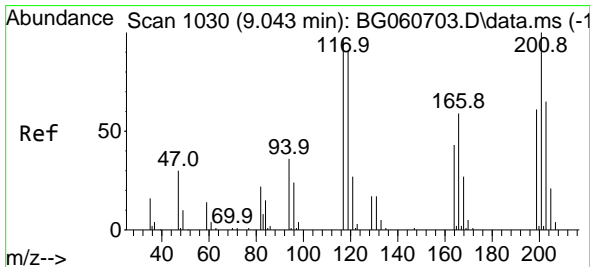
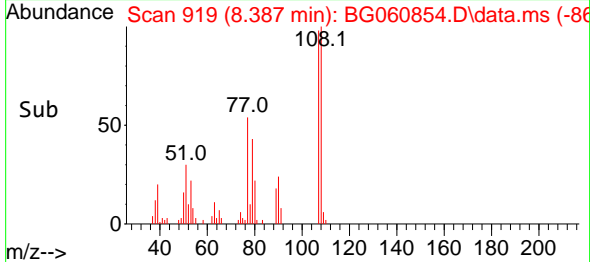
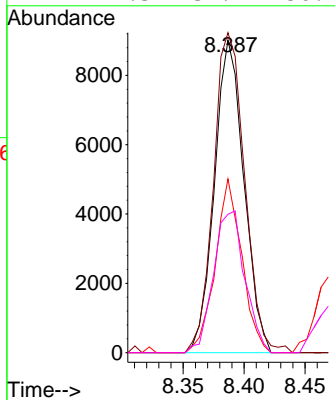
#17
 2-Methylphenol
 Concen: 3.063 ng
 RT: 8.387 min Scan# 91
 Delta R.T. -0.004 min
 Lab File: BG060854.D
 Acq: 10 Apr 2024 17:53

Instrument :
 BNA_G
 ClientSampleId :
 SU-03-04082024MSD



Tgt Ion:107 Resp: 15148

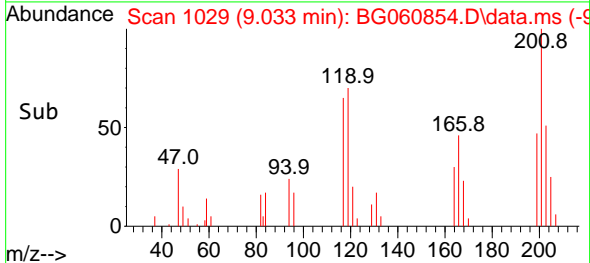
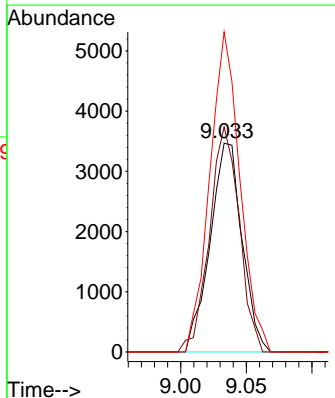
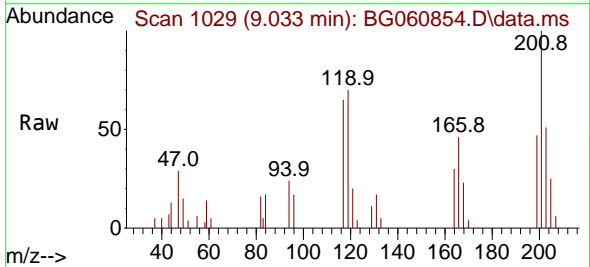
Ion	Ratio	Lower	Upper
107	100		
108	102.4	86.4	129.6
77	55.6	38.6	58.0
79	44.3	37.9	56.9

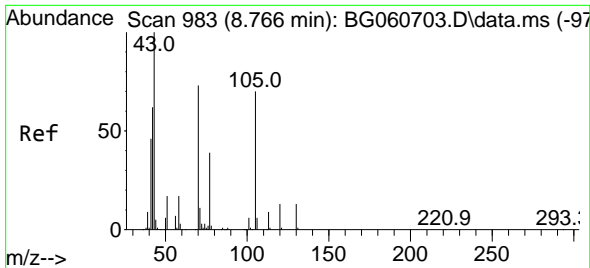


#18
 Hexachloroethane
 Concen: 3.182 ng
 RT: 9.033 min Scan# 1029
 Delta R.T. -0.009 min
 Lab File: BG060854.D
 Acq: 10 Apr 2024 17:53

Tgt Ion:117 Resp: 5878

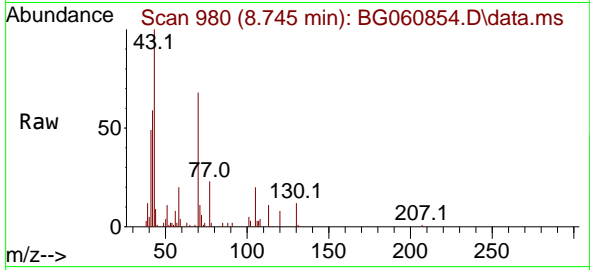
Ion	Ratio	Lower	Upper
117	100		
119	107.8	75.7	113.5
201	153.2	83.4	125.2#





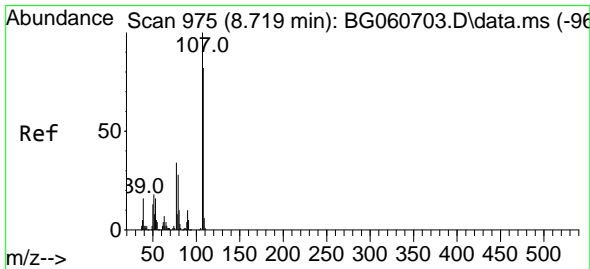
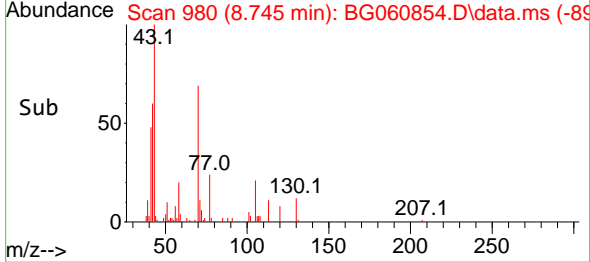
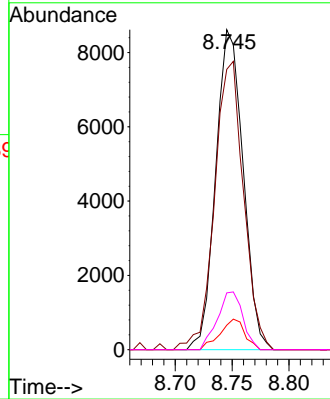
#19
 n-Nitroso-di-n-propylamine
 Concen: 2.953 ng
 RT: 8.745 min Scan# 983
 Delta R.T. -0.021 min
 Lab File: BG060854.D
 Acq: 10 Apr 2024 17:53

Instrument :
 BNA_G
 ClientSampleId :
 SU-03-04082024MSD

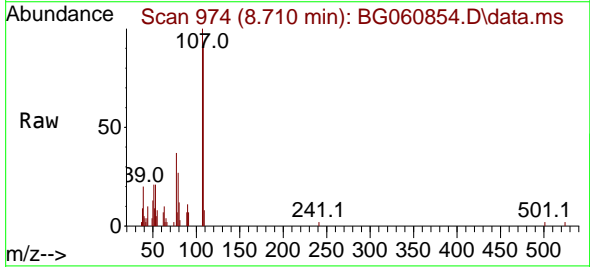


Tgt Ion: 70 Resp: 14457

Ion	Ratio	Lower	Upper
70	100		
42	87.6	68.4	102.6
101	7.7	6.1	9.1
130	17.7	14.6	21.8

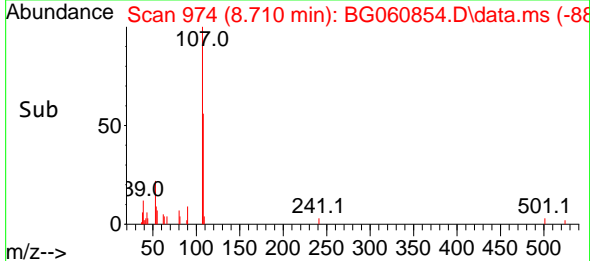
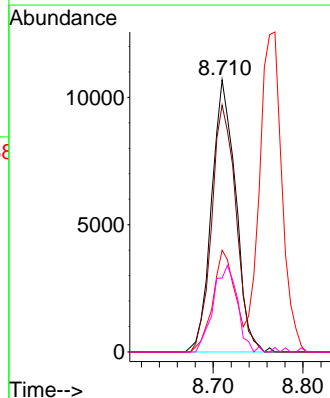


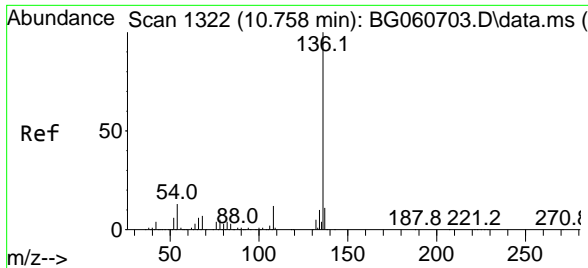
#20
 3+4-Methylphenols
 Concen: 2.931 ng
 RT: 8.710 min Scan# 974
 Delta R.T. -0.009 min
 Lab File: BG060854.D
 Acq: 10 Apr 2024 17:53



Tgt Ion: 107 Resp: 19850

Ion	Ratio	Lower	Upper
107	100		
108	90.7	62.2	102.2
77	37.4	14.1	54.1
79	27.2	7.7	47.7

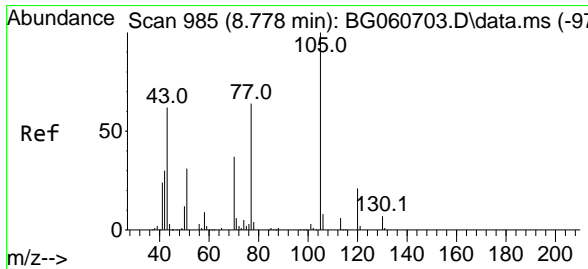
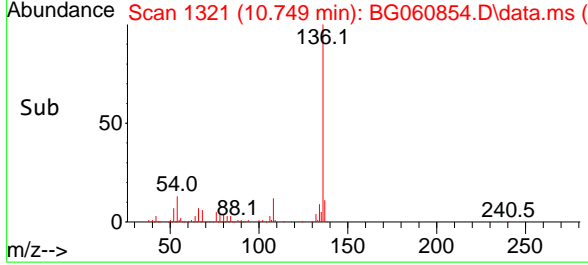
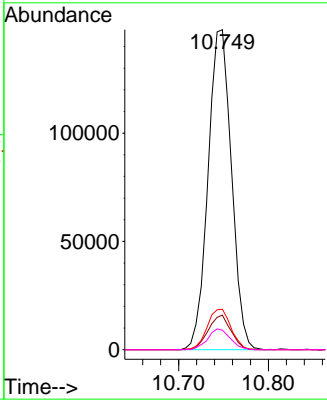
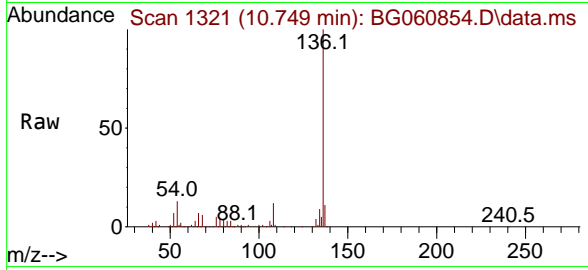




#21
 Naphthalene-d8
 Concen: 20.000 ng
 RT: 10.749 min Scan# 11
 Delta R.T. -0.009 min
 Lab File: BG060854.D
 Acq: 10 Apr 2024 17:53

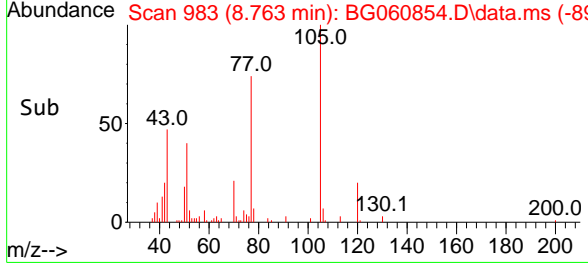
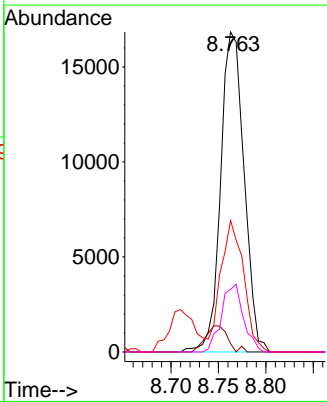
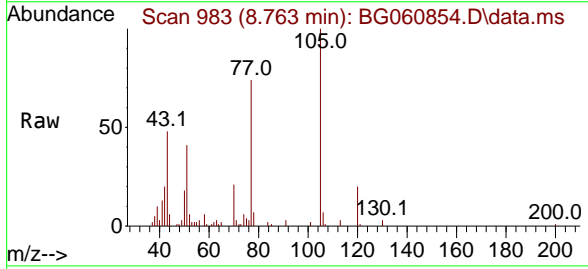
Instrument : BNA_G
 ClientSampleId : SU-03-04082024MSD

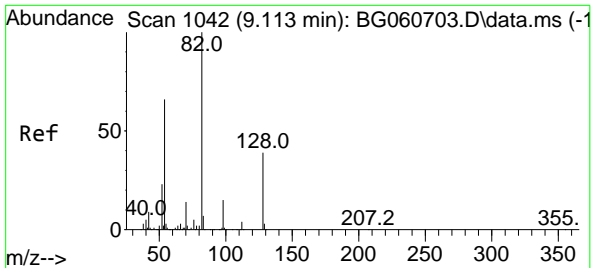
Tgt Ion	Resp	Lower	Upper
136	100		
137	10.8	8.8	13.2
54	12.7	10.2	15.2
68	6.1	5.2	7.8



#22
 Acetophenone
 Concen: 3.936 ng
 RT: 8.763 min Scan# 983
 Delta R.T. -0.015 min
 Lab File: BG060854.D
 Acq: 10 Apr 2024 17:53

Tgt Ion	Resp	Lower	Upper
105	100		
71	2.6	4.9	7.3#
51	41.1	31.1	46.7
120	19.5	17.0	25.4

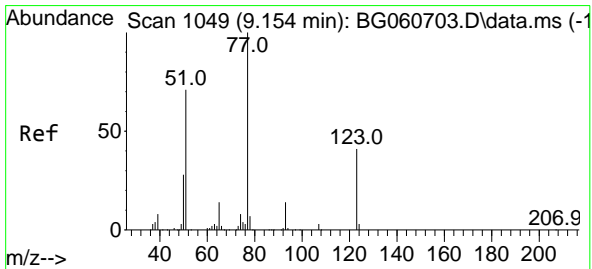
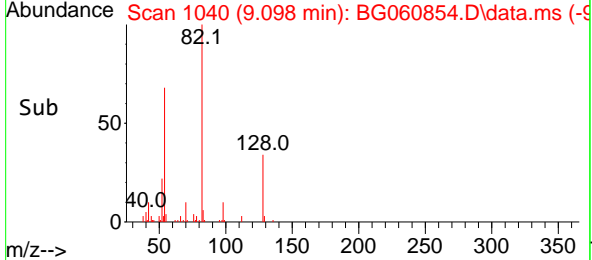
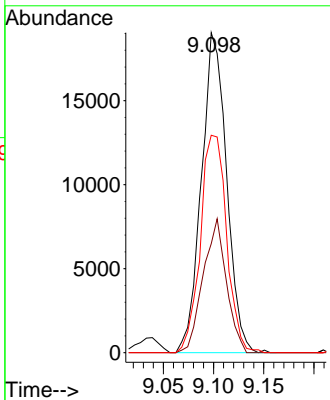
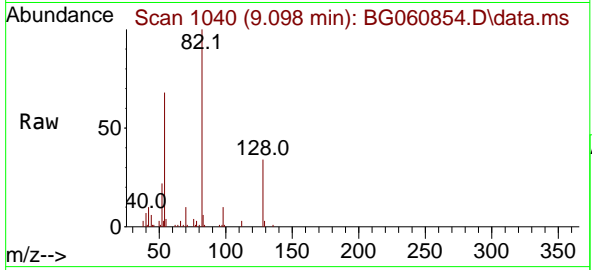




#23
 Nitrobenzene-d5
 Concen: 7.103 ng
 RT: 9.098 min Scan# 1040
 Delta R.T. -0.015 min
 Lab File: BG060854.D
 Acq: 10 Apr 2024 17:53

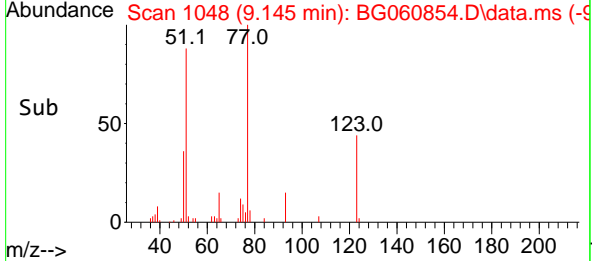
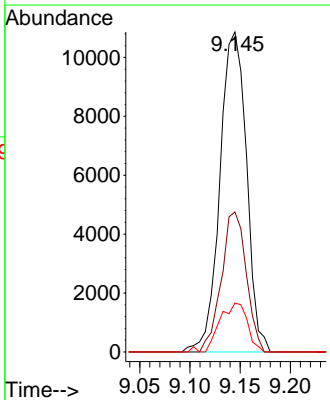
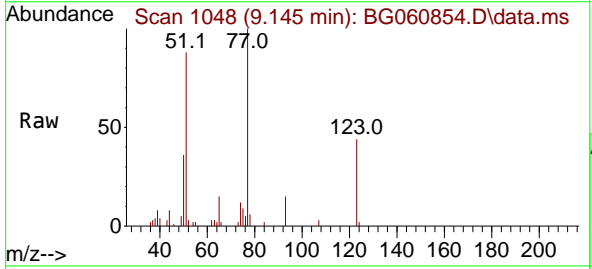
Instrument : BNA_G
 ClientSampleId : SU-03-04082024MSD

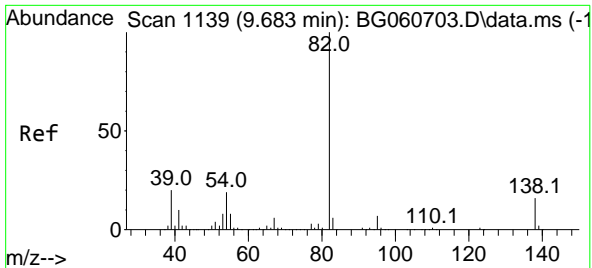
Tgt Ion	Resp	Lower	Upper
82	33265		
128	34.1	31.2	46.8
54	67.9	53.2	79.8



#24
 Nitrobenzene
 Concen: 6.388 ng
 RT: 9.145 min Scan# 1048
 Delta R.T. -0.009 min
 Lab File: BG060854.D
 Acq: 10 Apr 2024 17:53

Tgt Ion	Resp	Lower	Upper
77	20000		
123	43.8	32.7	49.1
65	15.3	11.3	16.9



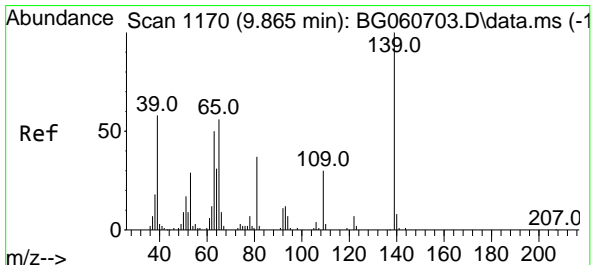
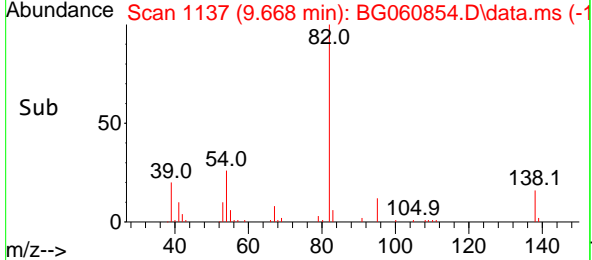
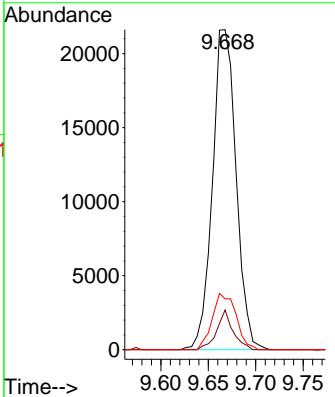
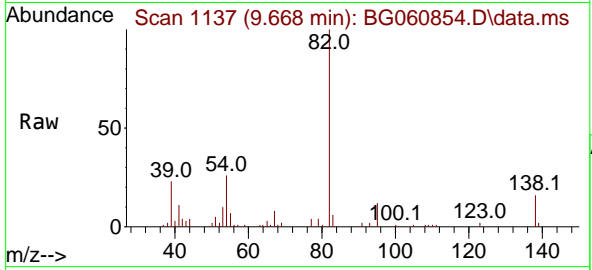


#25
 Isophorone
 Concen: 3.475 ng
 RT: 9.668 min Scan# 1137
 Delta R.T. -0.015 min
 Lab File: BG060854.D
 Acq: 10 Apr 2024 17:53

Instrument : BNA_G
 ClientSampleId : SU-03-04082024MSD

Tgt Ion: 82 Resp: 37486

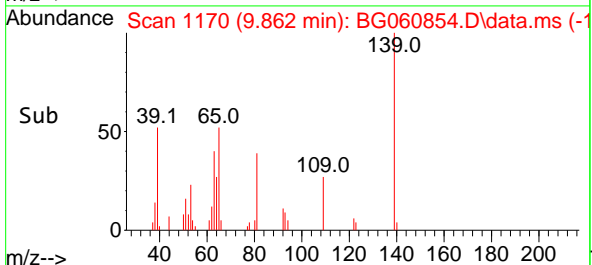
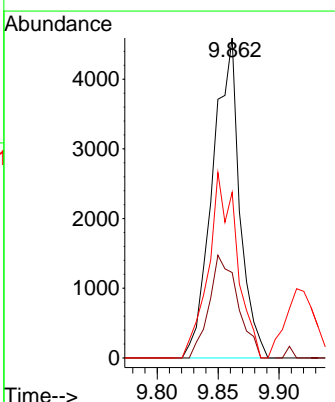
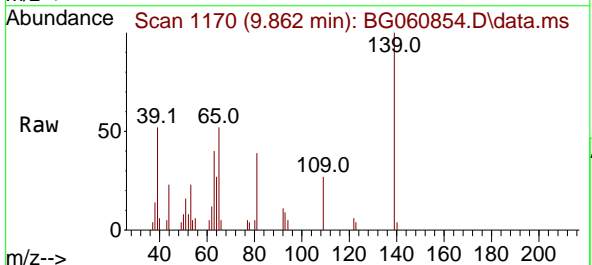
Ion	Ratio	Lower	Upper
82	100		
95	12.4	5.8	8.8#
138	15.9	13.0	19.4

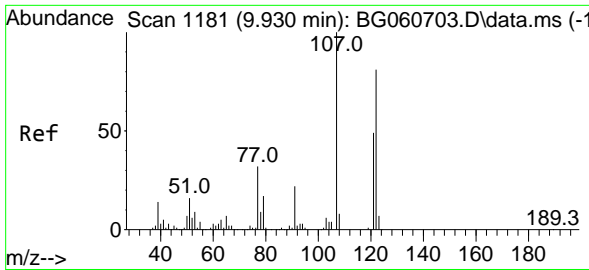


#26
 2-Nitrophenol
 Concen: 7.159 ng
 RT: 9.862 min Scan# 1170
 Delta R.T. -0.003 min
 Lab File: BG060854.D
 Acq: 10 Apr 2024 17:53

Tgt Ion: 139 Resp: 7111

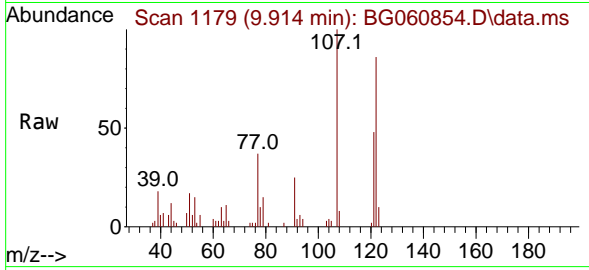
Ion	Ratio	Lower	Upper
139	100		
109	26.7	23.9	35.9
65	51.7	44.5	66.7



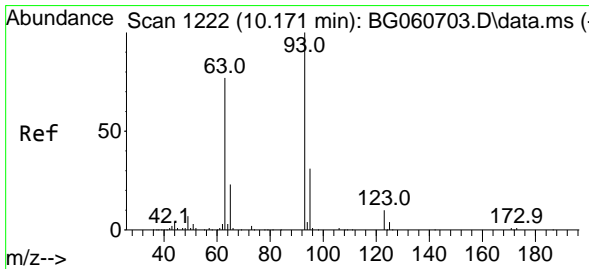
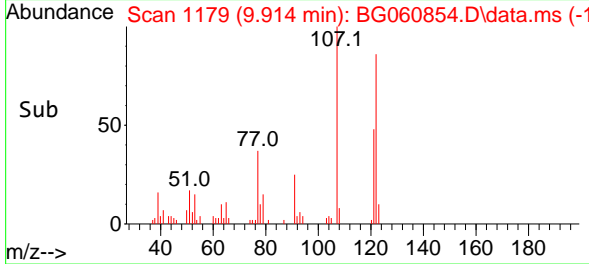
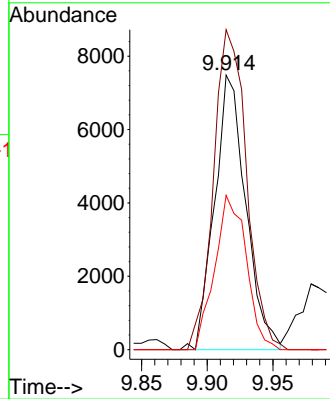


#27
 2,4-Dimethylphenol
 Concen: 2.859 ng
 RT: 9.914 min Scan# 1181
 Delta R.T. -0.016 min
 Lab File: BG060854.D
 Acq: 10 Apr 2024 17:53

Instrument : BNA_G
 ClientSampleId : SU-03-04082024MSD

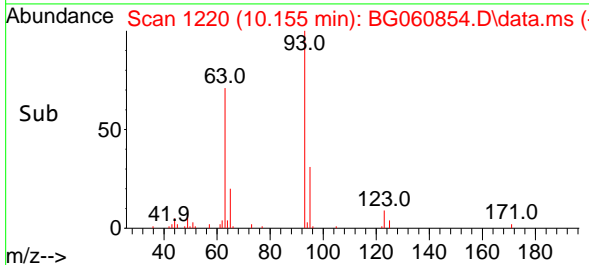
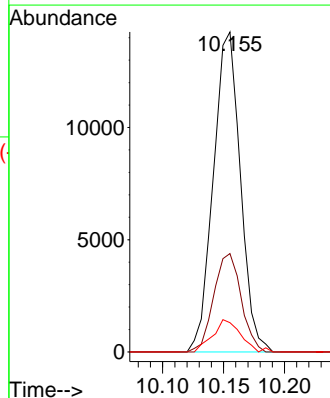
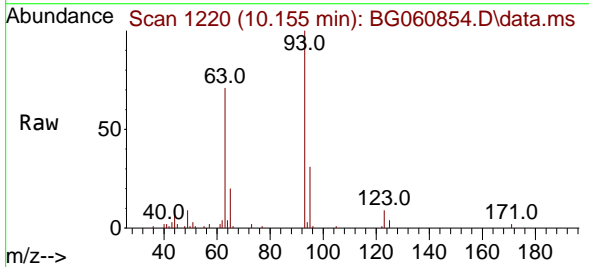


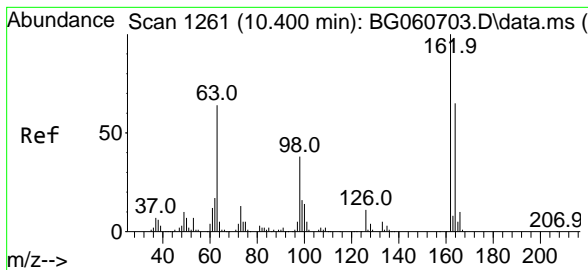
Tgt Ion:122 Resp: 12388
 Ion Ratio Lower Upper
 122 100
 107 116.5 98.6 147.8
 121 56.2 48.1 72.1



#28
 bis(2-Chloroethoxy)methane
 Concen: 3.448 ng
 RT: 10.155 min Scan# 1220
 Delta R.T. -0.015 min
 Lab File: BG060854.D
 Acq: 10 Apr 2024 17:53

Tgt Ion: 93 Resp: 21960
 Ion Ratio Lower Upper
 93 100
 95 30.7 25.1 37.7
 123 9.2 8.0 12.0

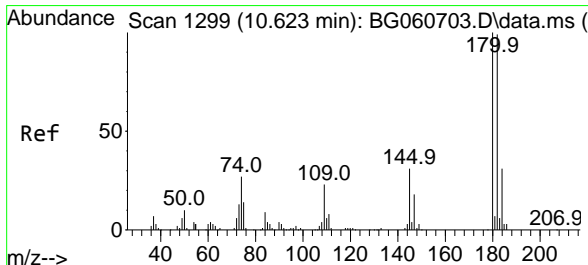
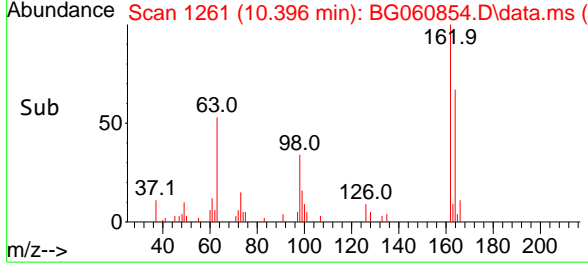
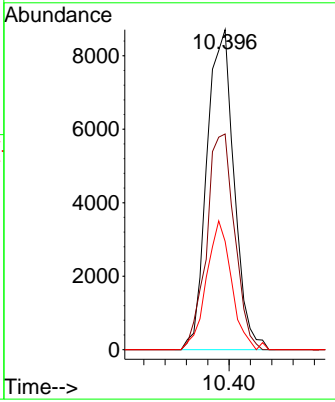
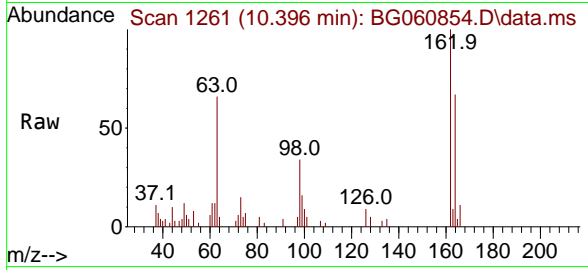




#29
 2,4-Dichlorophenol
 Concen: 3.869 ng
 RT: 10.396 min Scan# 11
 Delta R.T. -0.004 min
 Lab File: BG060854.D
 Acq: 10 Apr 2024 17:53

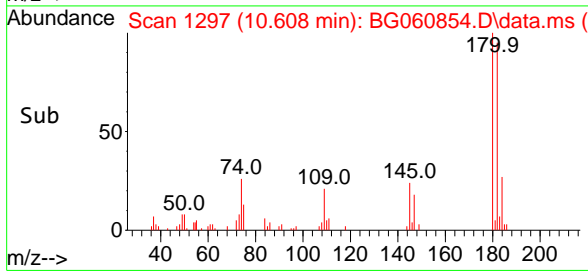
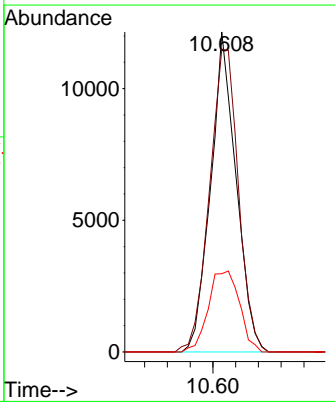
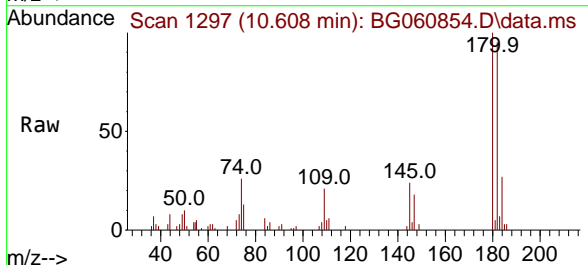
Instrument : BNA_G
 ClientSampleId : SU-03-04082024MSD

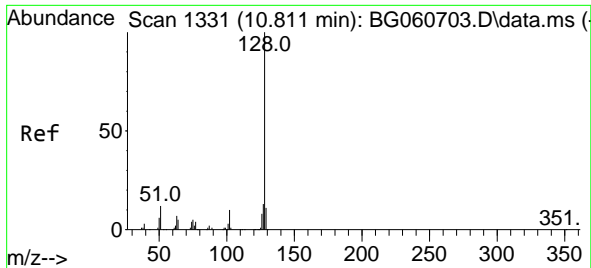
Tgt Ion	Resp	Lower	Upper
162	15395		
162	100		
164	67.4	45.2	85.2
98	33.9	17.7	57.7



#30
 1,2,4-Trichlorobenzene
 Concen: 4.190 ng
 RT: 10.608 min Scan# 1297
 Delta R.T. -0.015 min
 Lab File: BG060854.D
 Acq: 10 Apr 2024 17:53

Tgt Ion	Resp	Lower	Upper
180	18876		
180	100		
182	94.5	79.0	118.4
145	24.4	24.9	37.3#

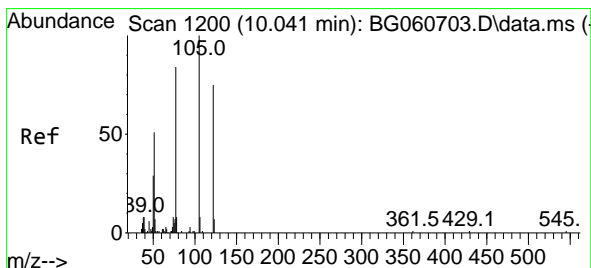
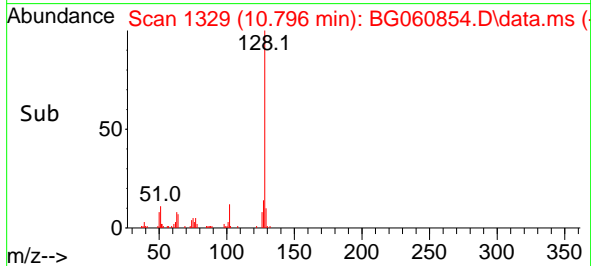
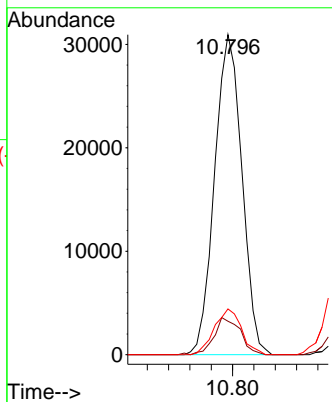
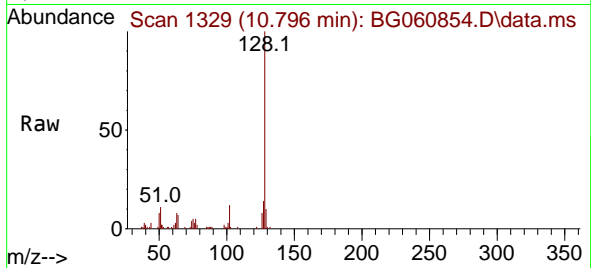




#31
 Naphthalene
 Concen: 3.800 ng
 RT: 10.796 min Scan# 11
 Delta R.T. -0.015 min
 Lab File: BG060854.D
 Acq: 10 Apr 2024 17:53

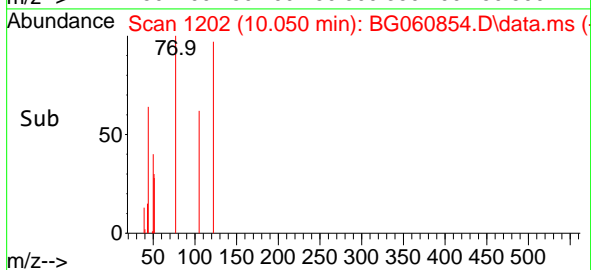
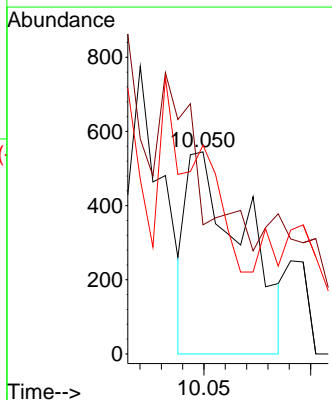
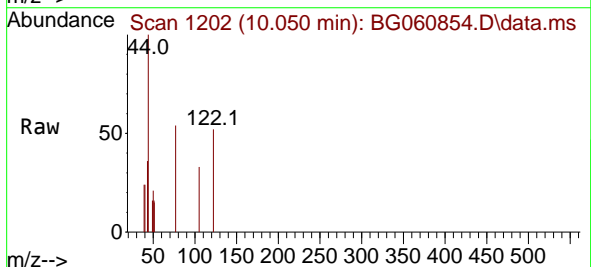
Instrument :
 BNA_G
 ClientSampleId :
 SU-03-04082024MSD

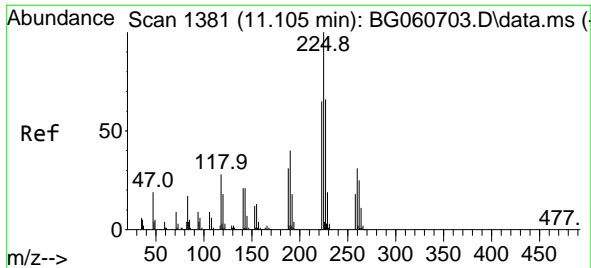
Tgt Ion	Resp	Lower	Upper
128	54933		
129	10.4	8.5	12.7
127	14.3	10.5	15.7



#32
 Benzoic acid
 Concen: 7.134 ng
 RT: 10.050 min Scan# 1202
 Delta R.T. 0.009 min
 Lab File: BG060854.D
 Acq: 10 Apr 2024 17:53

Tgt Ion	Resp	Lower	Upper
122	1003		
122	100		
105	63.9	104.5	144.5#
77	103.3	85.3	125.3



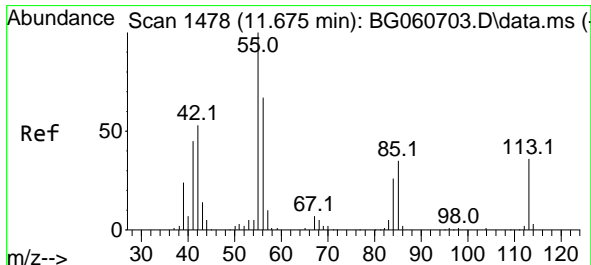
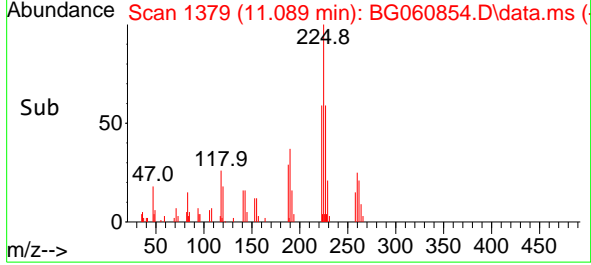
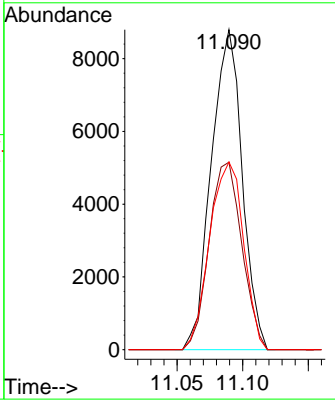
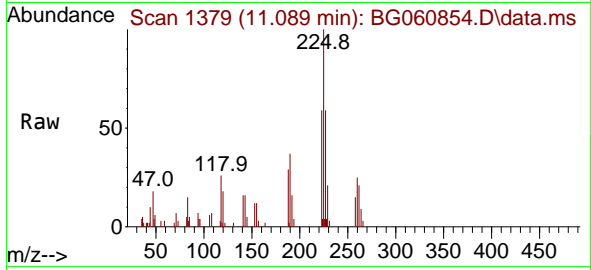


#34
 Hexachlorobutadiene
 Concen: 4.798 ng
 RT: 11.089 min Scan# 11
 Delta R.T. -0.015 min
 Lab File: BG060854.D
 Acq: 10 Apr 2024 17:53

Instrument : BNA_G
 ClientSampleId : SU-03-04082024MSD

Tgt Ion:225 Resp: 14406

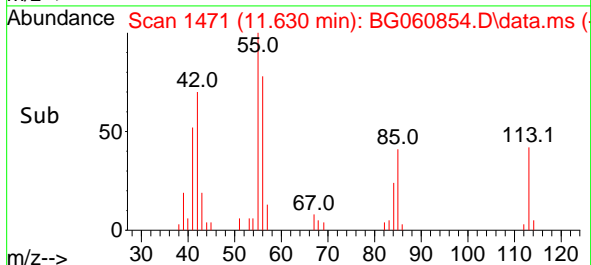
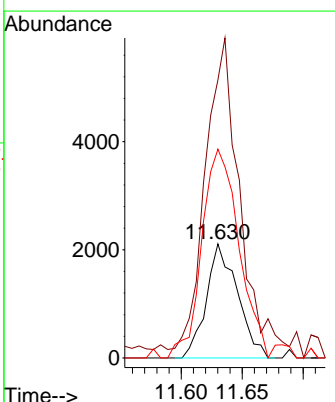
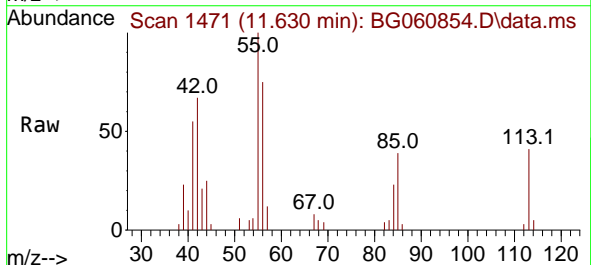
Ion	Ratio	Lower	Upper
225	100		
223	62.2	52.0	78.0
227	58.6	52.5	78.7

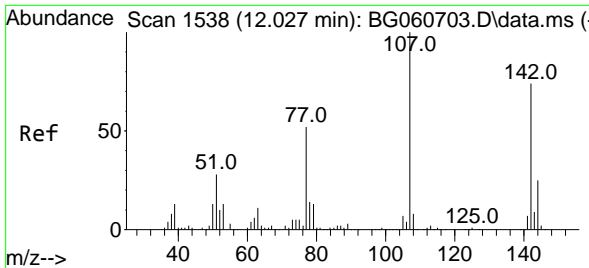


#35
 Caprolactam
 Concen: 2.378 ng
 RT: 11.630 min Scan# 1471
 Delta R.T. -0.045 min
 Lab File: BG060854.D
 Acq: 10 Apr 2024 17:53

Tgt Ion:113 Resp: 3748

Ion	Ratio	Lower	Upper
113	100		
55	243.9	258.0	298.0#
56	183.1	166.3	206.3

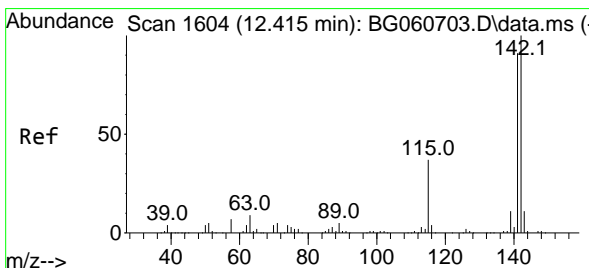
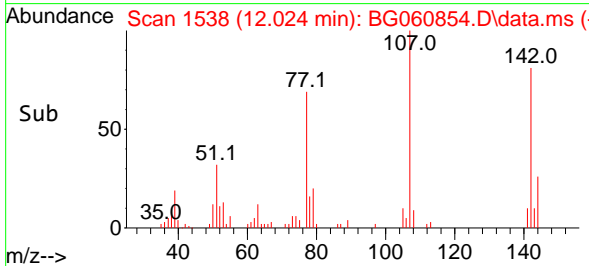
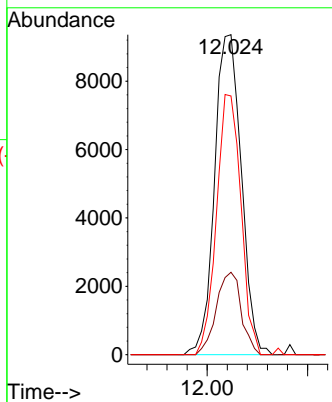
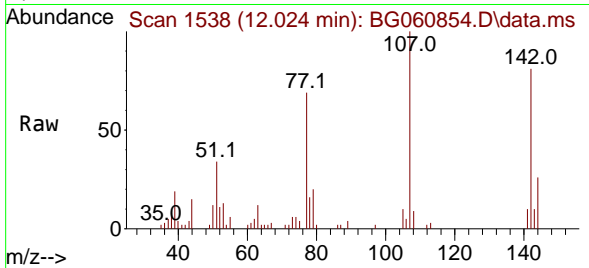




#36
 4-Chloro-3-methylphenol
 Concen: 3.408 ng
 RT: 12.024 min Scan# 11
 Delta R.T. -0.004 min
 Lab File: BG060854.D
 Acq: 10 Apr 2024 17:53

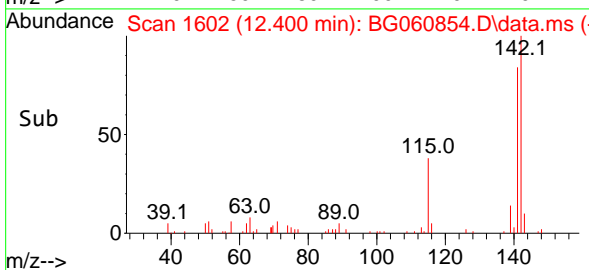
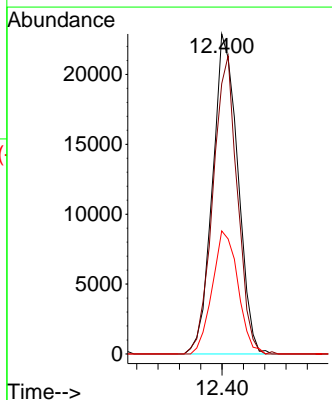
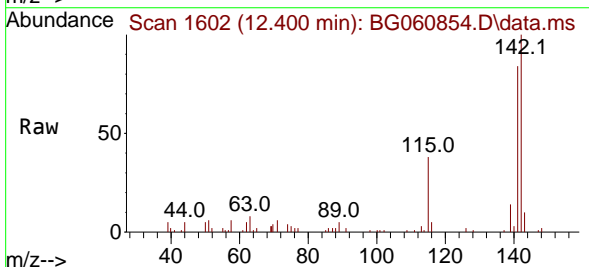
Instrument : BNA_G
 ClientSampleId : SU-03-04082024MSD

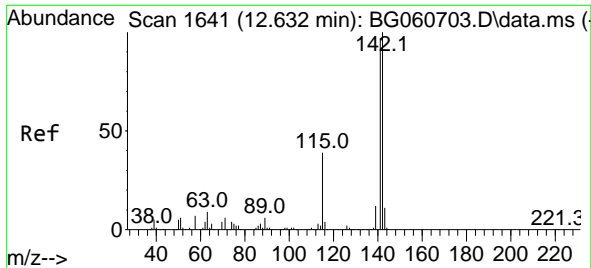
Tgt Ion	Resp	Lower	Upper
107	17321		
107	100		
144	25.8	20.0	30.0
142	80.8	59.2	88.8



#37
 2-Methylnaphthalene
 Concen: 3.540 ng
 RT: 12.400 min Scan# 1602
 Delta R.T. -0.015 min
 Lab File: BG060854.D
 Acq: 10 Apr 2024 17:53

Tgt Ion	Resp	Lower	Upper
142	37617		
142	100		
141	84.5	72.7	109.1
115	38.5	29.9	44.9



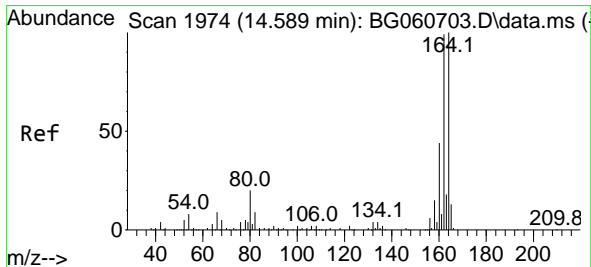
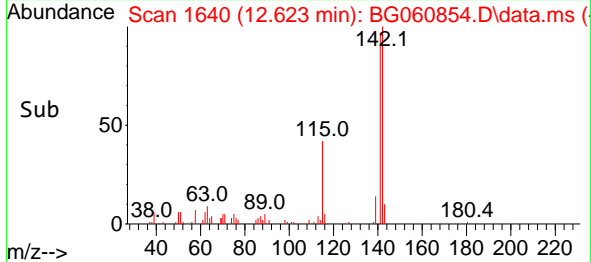
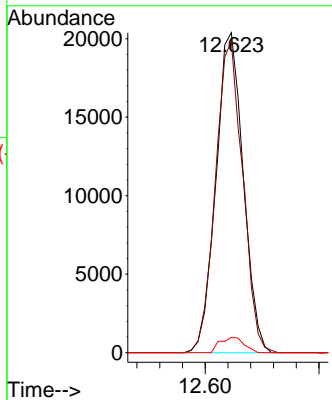
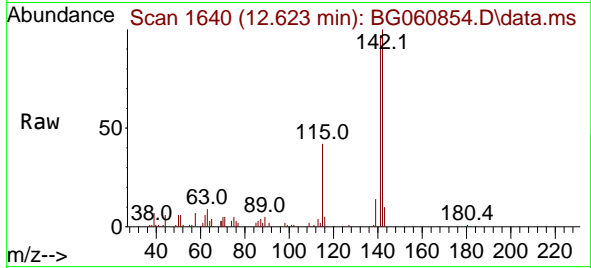


#38
 1-Methylnaphthalene
 Concen: 3.377 ng
 RT: 12.623 min Scan# 10
 Delta R.T. -0.009 min
 Lab File: BG060854.D
 Acq: 10 Apr 2024 17:53

Instrument : BNA_G
 ClientSampleId : SU-03-04082024MSD

Tgt Ion:142 Resp: 33902

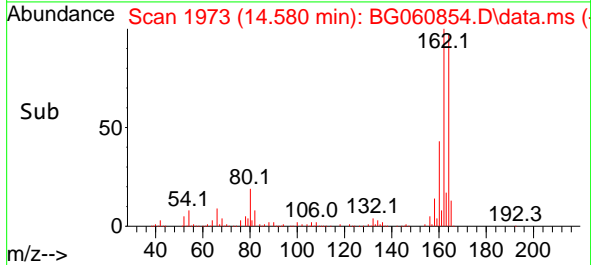
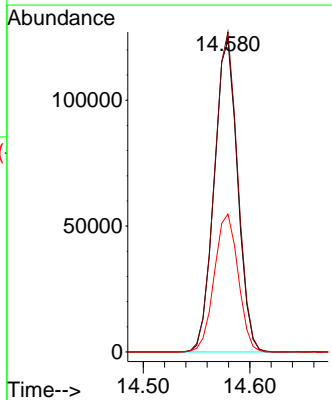
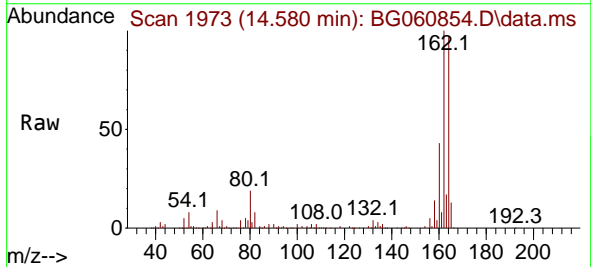
Ion	Ratio	Lower	Upper
142	100		
141	97.4	77.7	116.5
116	4.8	3.4	5.2

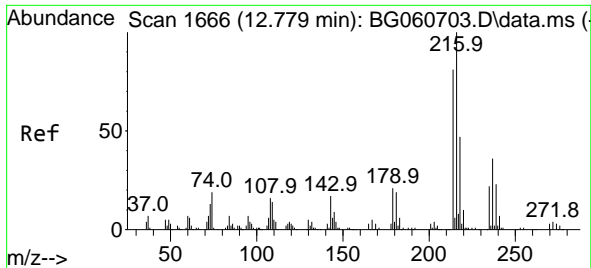


#39
 Acenaphthene-d10
 Concen: 20.000 ng
 RT: 14.580 min Scan# 1973
 Delta R.T. -0.009 min
 Lab File: BG060854.D
 Acq: 10 Apr 2024 17:53

Tgt Ion:164 Resp: 188796

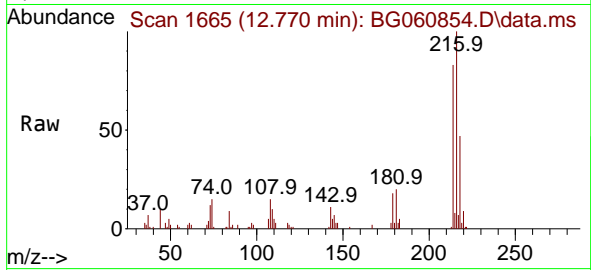
Ion	Ratio	Lower	Upper
164	100		
162	102.7	79.5	119.3
160	44.2	35.4	53.0





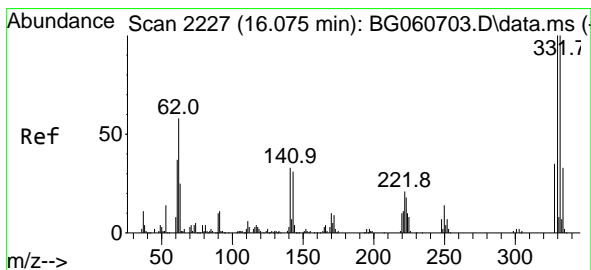
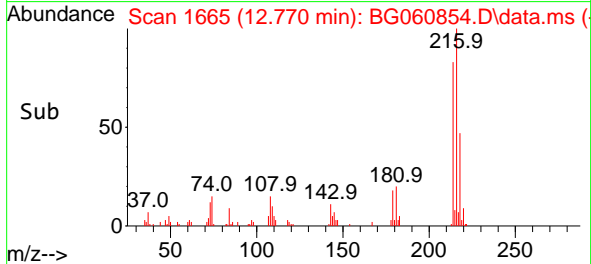
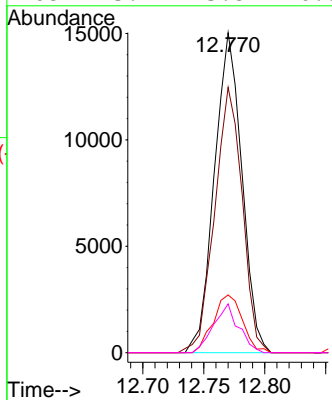
#40
 1,2,4,5-Tetrachlorobenzene
 Concen: 4.342 ng
 RT: 12.770 min Scan# 1665
 Delta R.T. -0.009 min
 Lab File: BG060854.D
 Acq: 10 Apr 2024 17:53

Instrument : BNA_G
 ClientSampleId : SU-03-04082024MSD

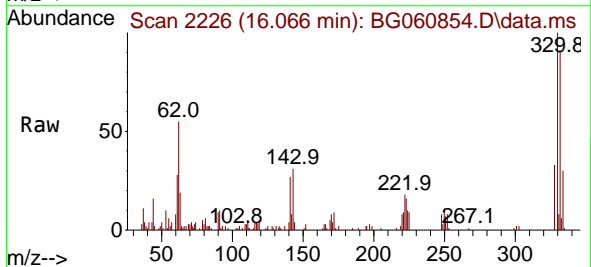


Tgt Ion: 216 Resp: 23568

Ion	Ratio	Lower	Upper
216	100		
214	82.8	63.1	94.7
179	19.2	16.7	25.1
108	13.9	13.8	20.6

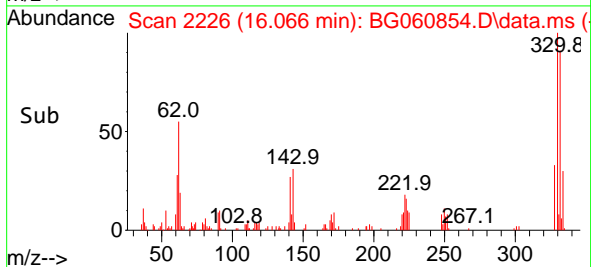
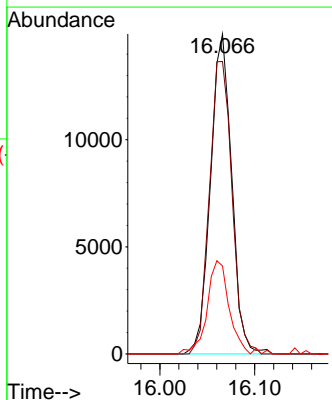


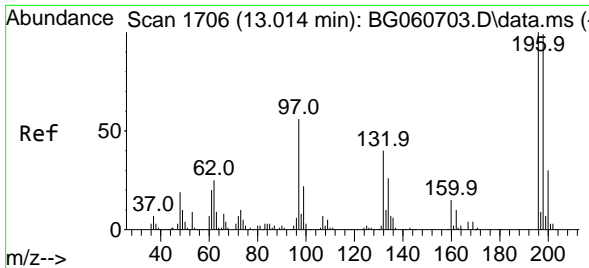
#42
 2,4,6-Tribromophenol
 Concen: 10.816 ng
 RT: 16.066 min Scan# 2226
 Delta R.T. -0.009 min
 Lab File: BG060854.D
 Acq: 10 Apr 2024 17:53



Tgt Ion: 330 Resp: 23181

Ion	Ratio	Lower	Upper
330	100		
332	97.0	78.2	117.4
141	30.1	27.0	40.6



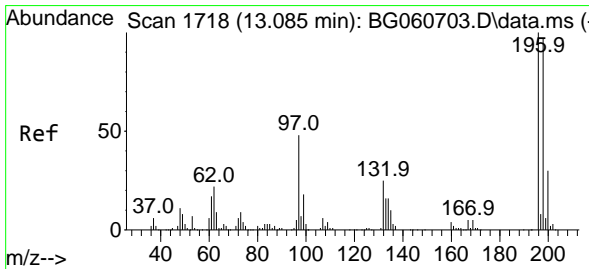
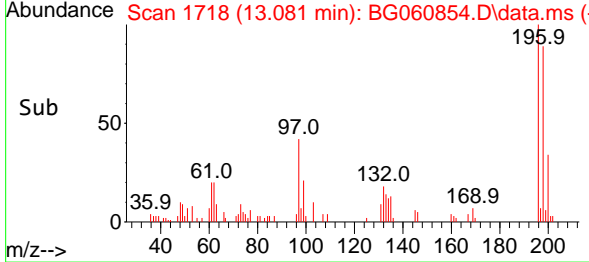
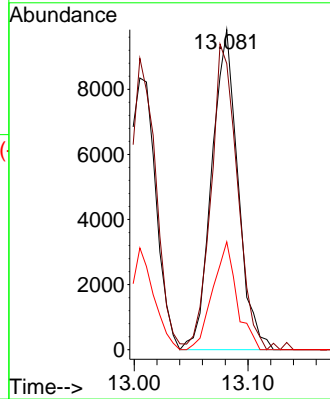
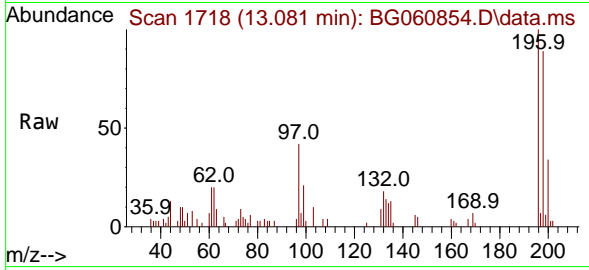


#43
 2,4,6-Trichlorophenol
 Concen: 4.512 ng
 RT: 13.081 min Scan# 1718
 Delta R.T. 0.067 min
 Lab File: BG060854.D
 Acq: 10 Apr 2024 17:53

Instrument :
 BNA_G
 ClientSampleId :
 SU-03-04082024MSD

Tgt Ion:196 Resp: 15770

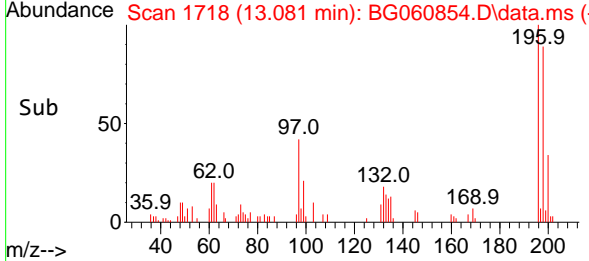
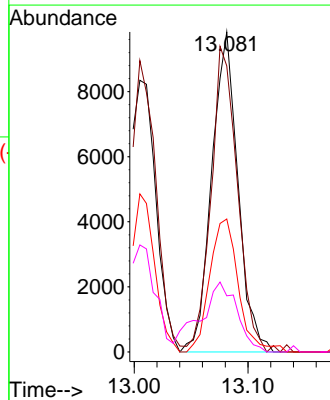
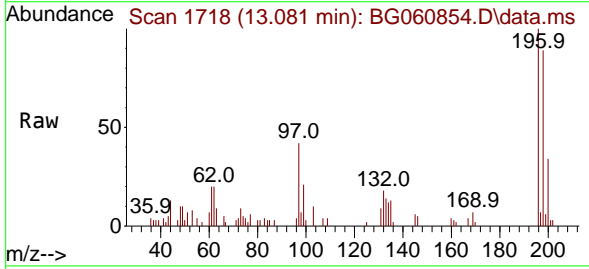
Ion	Ratio	Lower	Upper
196	100		
198	89.4	79.1	118.7
200	33.7	24.0	36.0

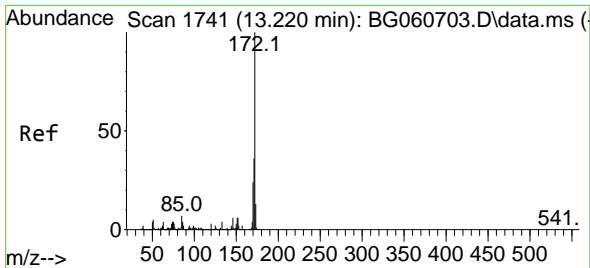


#44
 2,4,5-Trichlorophenol
 Concen: 3.781 ng
 RT: 13.081 min Scan# 1718
 Delta R.T. -0.004 min
 Lab File: BG060854.D
 Acq: 10 Apr 2024 17:53

Tgt Ion:196 Resp: 15770

Ion	Ratio	Lower	Upper
196	100		
198	89.4	77.8	116.8
97	41.6	38.2	57.4
132	17.6	20.3	30.5#



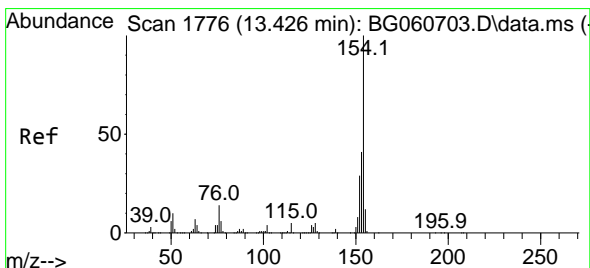
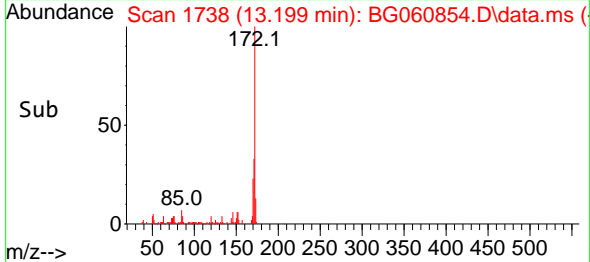
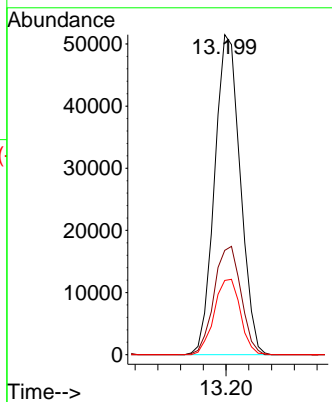
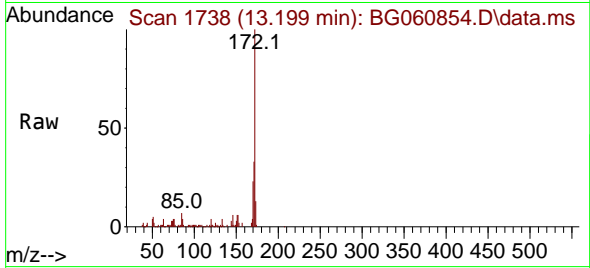


#45
 2-Fluorobiphenyl
 Concen: 6.261 ng
 RT: 13.199 min Scan# 1738
 Delta R.T. -0.021 min
 Lab File: BG060854.D
 Acq: 10 Apr 2024 17:53

Instrument : BNA_G
 ClientSampleId : SU-03-04082024MSD

Tgt Ion:172 Resp: 80545

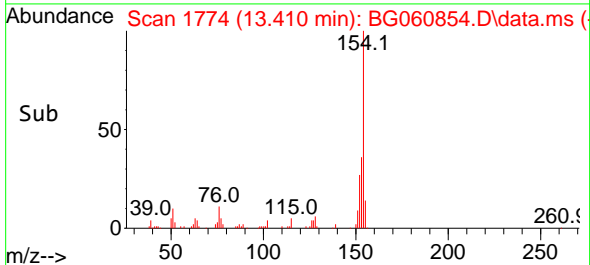
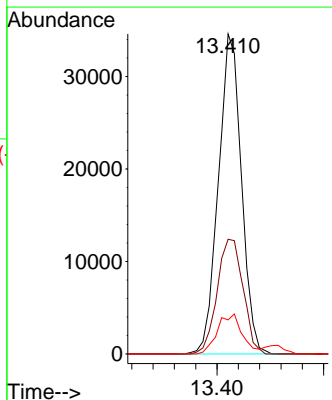
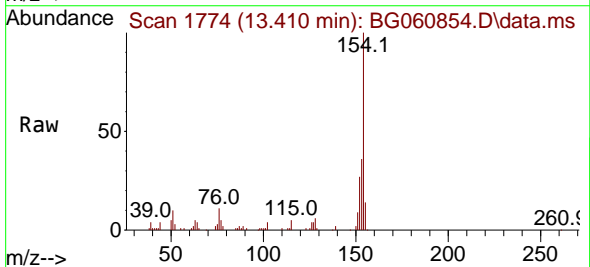
Ion	Ratio	Lower	Upper
172	100		
171	32.6	28.7	43.1
170	23.2	19.4	29.0

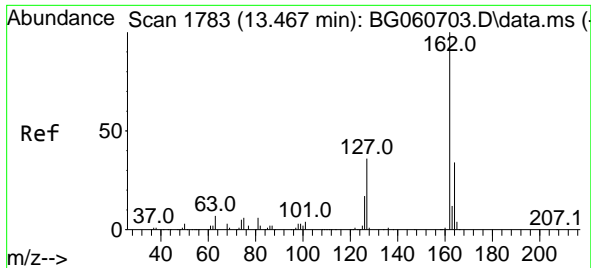


#46
 1,1'-Biphenyl
 Concen: 3.879 ng
 RT: 13.410 min Scan# 1774
 Delta R.T. -0.015 min
 Lab File: BG060854.D
 Acq: 10 Apr 2024 17:53

Tgt Ion:154 Resp: 51726

Ion	Ratio	Lower	Upper
154	100		
153	35.9	20.8	60.8
76	10.6	0.0	33.9

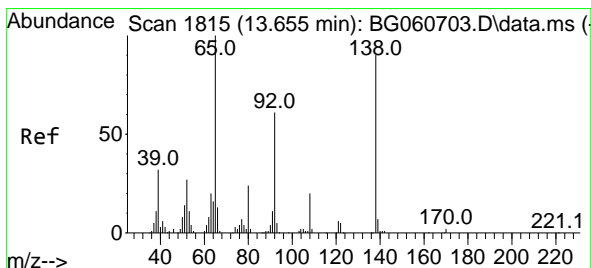
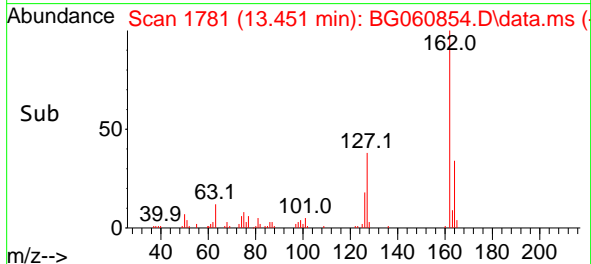
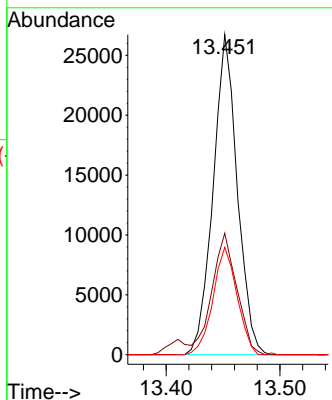
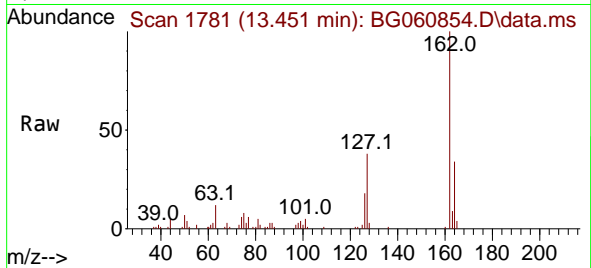




#47
 2-Chloronaphthalene
 Concen: 3.889 ng
 RT: 13.451 min Scan# 11
 Delta R.T. -0.015 min
 Lab File: BG060854.D
 Acq: 10 Apr 2024 17:53

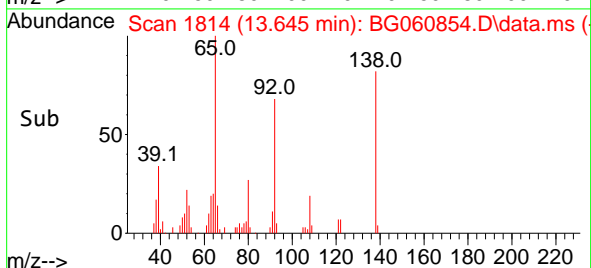
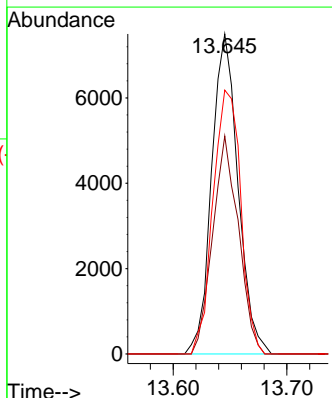
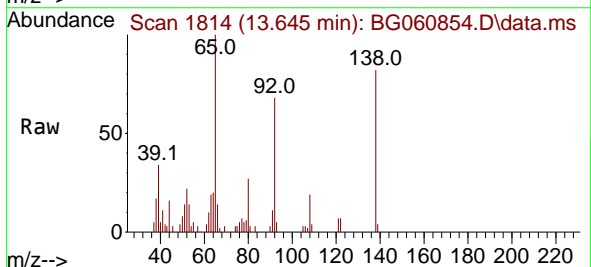
Instrument :
 BNA_G
 ClientSampleId :
 SU-03-04082024MSD

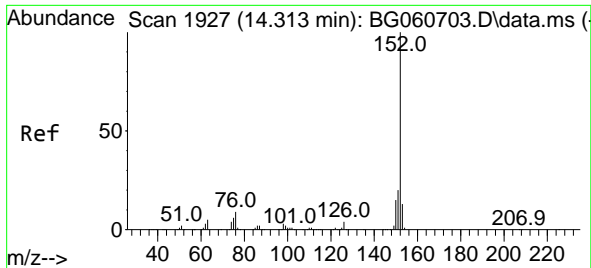
Tgt Ion	Resp	Lower	Upper
162	39400		
127	38.0	30.6	46.0
164	33.6	26.9	40.3



#48
 2-Nitroaniline
 Concen: 6.637 ng
 RT: 13.645 min Scan# 1814
 Delta R.T. -0.010 min
 Lab File: BG060854.D
 Acq: 10 Apr 2024 17:53

Tgt Ion	Resp	Lower	Upper
65	12070		
92	68.1	48.6	72.8
138	82.4	72.2	108.4



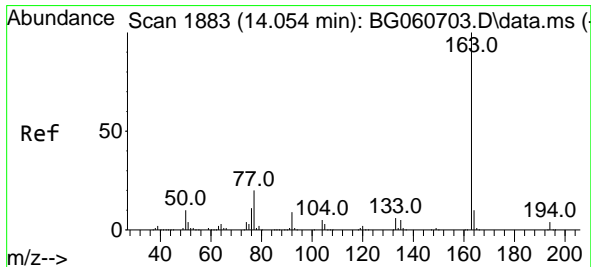
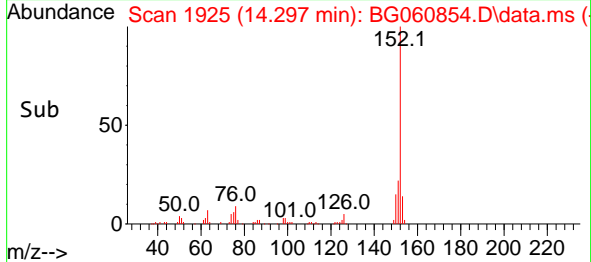
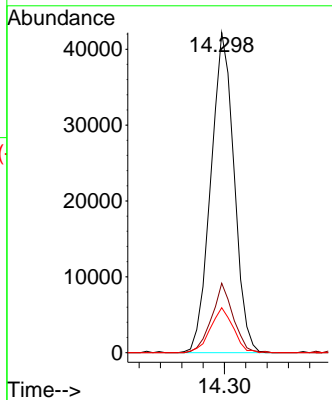
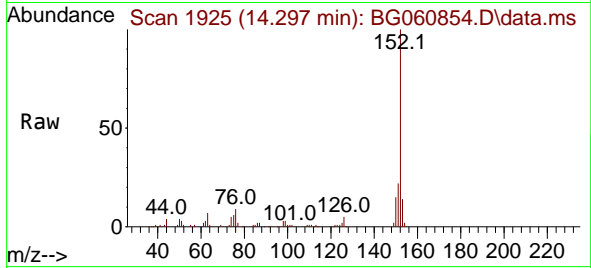


#49
 Acenaphthylene
 Concen: 3.761 ng
 RT: 14.297 min Scan# 1879
 Delta R.T. -0.016 min
 Lab File: BG060854.D
 Acq: 10 Apr 2024 17:53

Instrument : BNA_G
 ClientSampleId : SU-03-04082024MSD

Tgt Ion:152 Resp: 64027

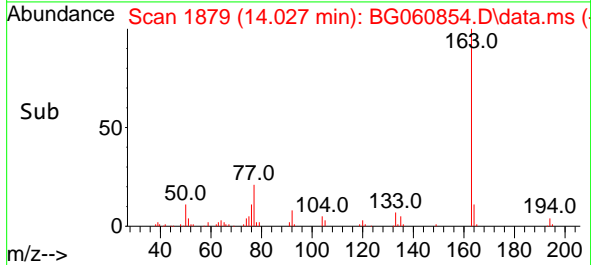
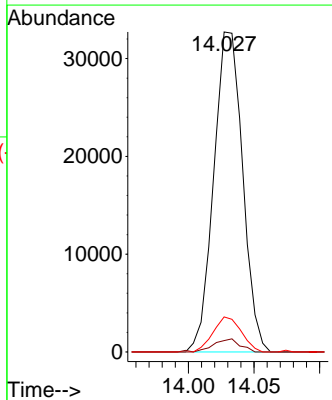
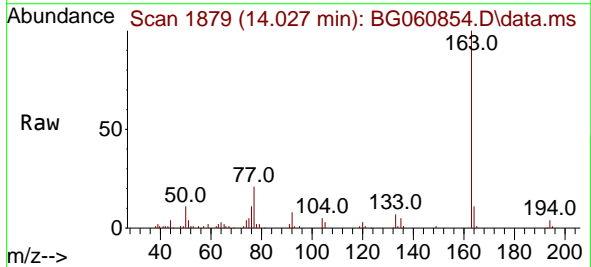
Ion	Ratio	Lower	Upper
152	100		
151	21.7	16.4	24.6
153	14.1	10.5	15.7

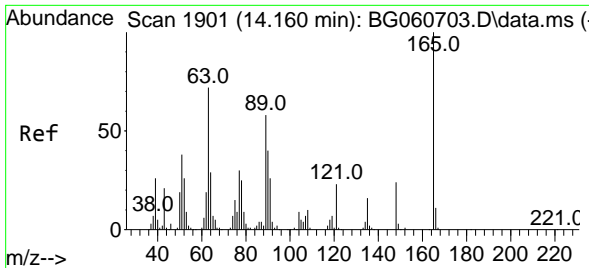


#50
 Dimethylphthalate
 Concen: 3.352 ng
 RT: 14.027 min Scan# 1879
 Delta R.T. -0.027 min
 Lab File: BG060854.D
 Acq: 10 Apr 2024 17:53

Tgt Ion:163 Resp: 50027

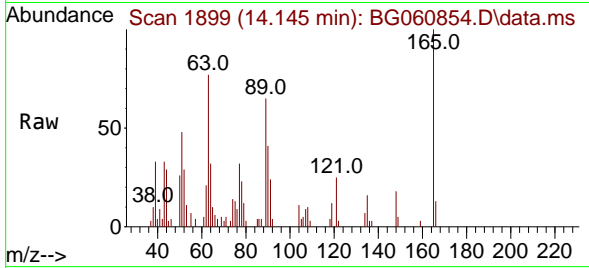
Ion	Ratio	Lower	Upper
163	100		
194	3.6	3.0	4.6
164	10.9	7.9	11.9





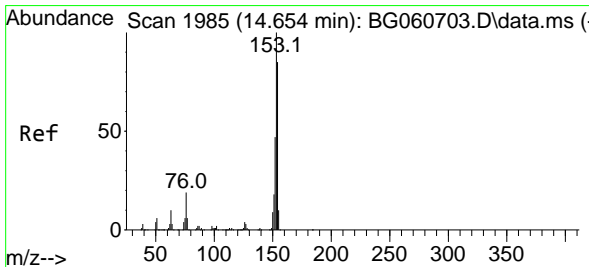
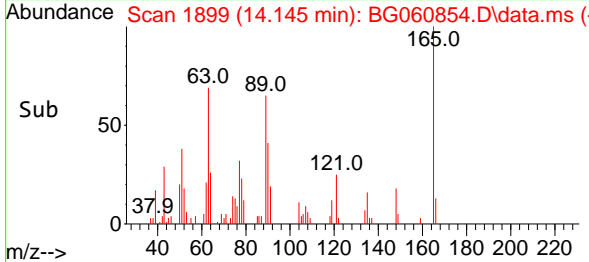
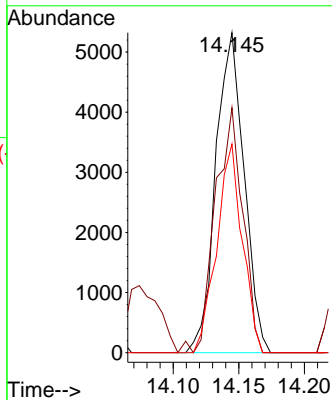
#51
 2,6-Dinitrotoluene
 Concen: 6.264 ng
 RT: 14.145 min Scan# 1899
 Delta R.T. -0.015 min
 Lab File: BG060854.D
 Acq: 10 Apr 2024 17:53

Instrument : BNA_G
 ClientSampleId : SU-03-04082024MSD



Tgt Ion:165 Resp: 7983

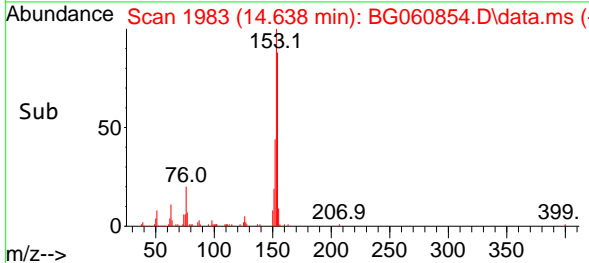
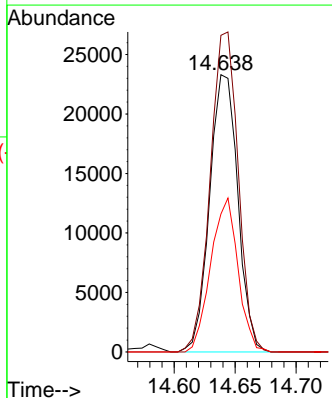
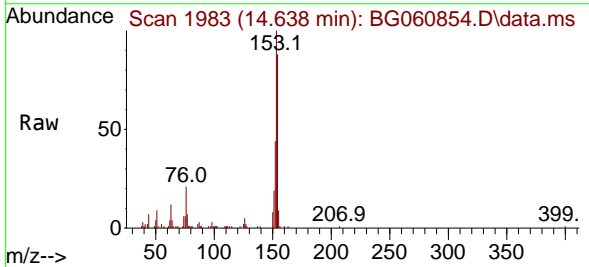
Ion	Ratio	Lower	Upper
165	100		
63	76.6	58.2	87.4
89	65.2	46.1	69.1

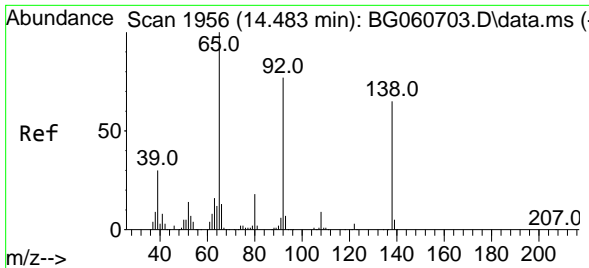


#52
 Acenaphthene
 Concen: 3.509 ng
 RT: 14.638 min Scan# 1983
 Delta R.T. -0.016 min
 Lab File: BG060854.D
 Acq: 10 Apr 2024 17:53

Tgt Ion:154 Resp: 37507

Ion	Ratio	Lower	Upper
154	100		
153	114.1	93.9	140.9
152	49.7	44.1	66.1

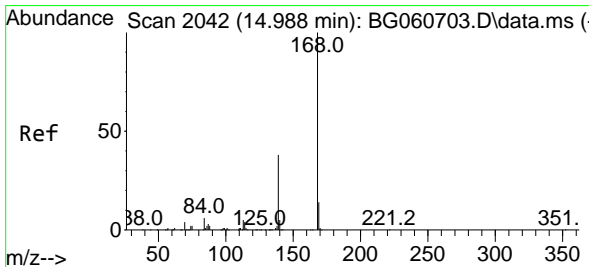
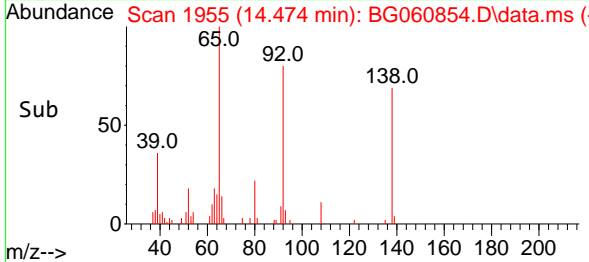
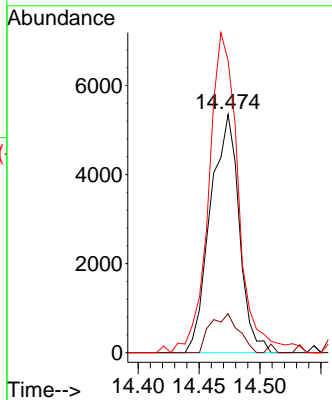
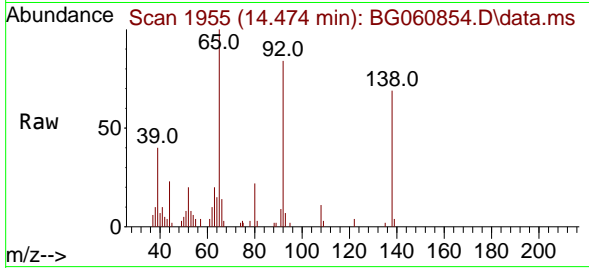




#53
 3-Nitroaniline
 Concen: 5.670 ng
 RT: 14.474 min Scan# 1955
 Delta R.T. -0.009 min
 Lab File: BG060854.D
 Acq: 10 Apr 2024 17:53

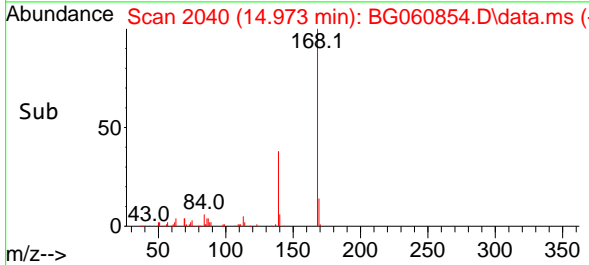
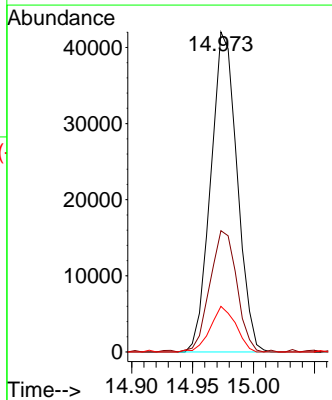
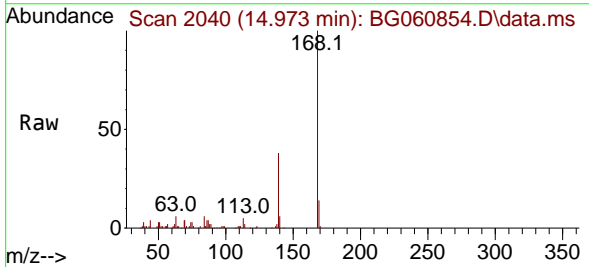
Instrument :
 BNA_G
 ClientSampleId :
 SU-03-04082024MSD

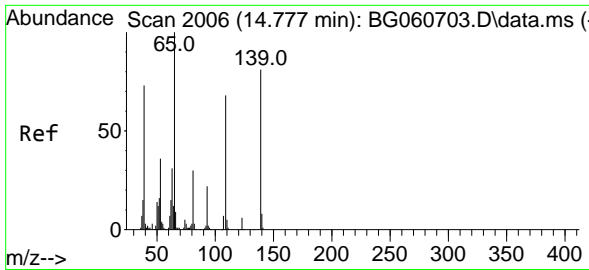
Tgt Ion	Resp	Lower	Upper
138	100		
108	16.3	11.3	16.9
92	122.4	94.1	141.1



#55
 Dibenzofuran
 Concen: 3.752 ng
 RT: 14.973 min Scan# 2040
 Delta R.T. -0.015 min
 Lab File: BG060854.D
 Acq: 10 Apr 2024 17:53

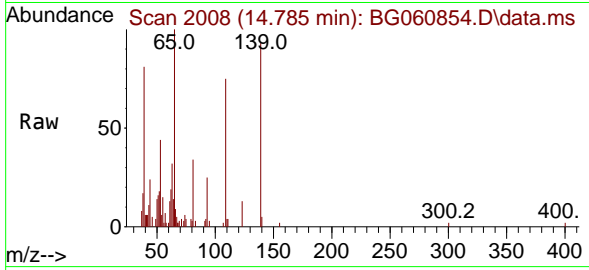
Tgt Ion	Resp	Lower	Upper
168	100		
139	37.9	30.1	45.1
169	14.3	11.0	16.4



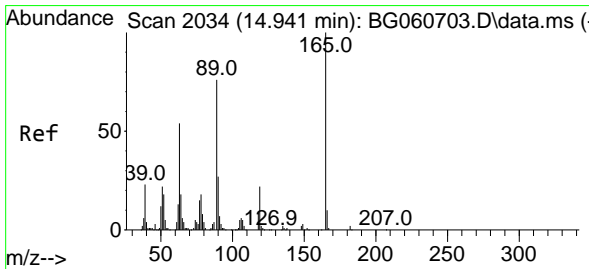
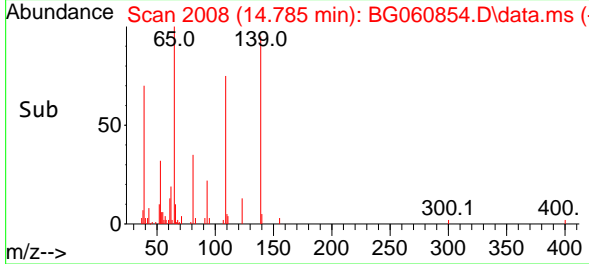
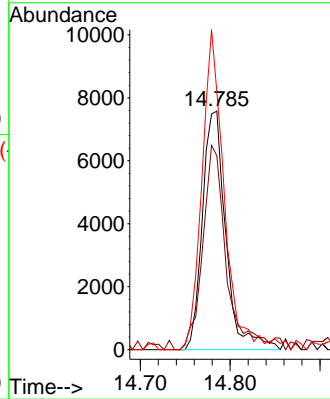


#56
 4-Nitrophenol
 Concen: 6.289 ng
 RT: 14.785 min Scan# 2008
 Delta R.T. 0.008 min
 Lab File: BG060854.D
 Acq: 10 Apr 2024 17:53

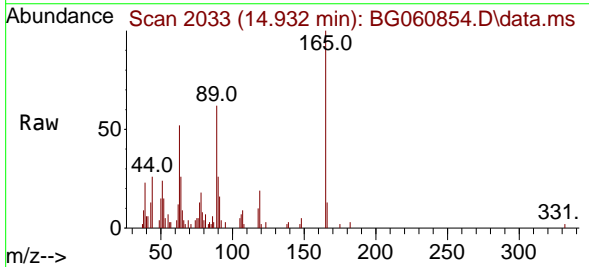
Instrument :
 BNA_G
 ClientSampleId :
 SU-03-04082024MSD



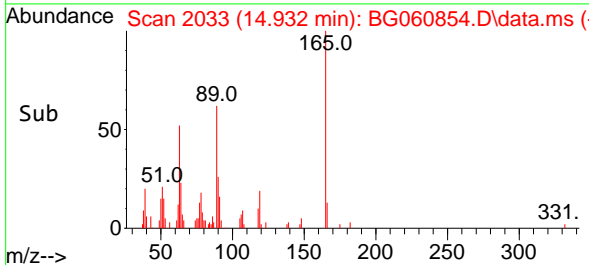
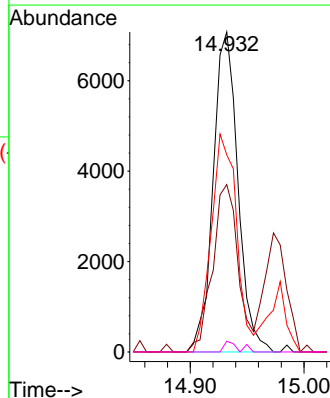
Tgt Ion:139 Resp: 13719
 Ion Ratio Lower Upper
 139 100
 109 81.3 64.0 104.0
 65 108.0 104.3 144.3

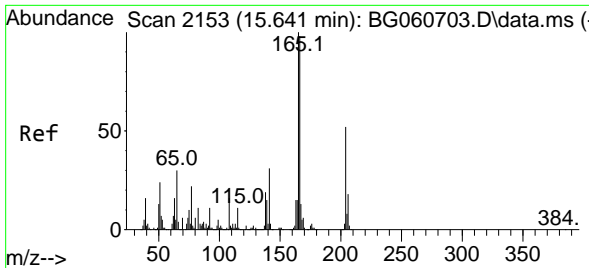


#57
 2,4-Dinitrotoluene
 Concen: 6.251 ng
 RT: 14.932 min Scan# 2033
 Delta R.T. -0.009 min
 Lab File: BG060854.D
 Acq: 10 Apr 2024 17:53



Tgt Ion:165 Resp: 10710
 Ion Ratio Lower Upper
 165 100
 63 52.3 43.4 65.0
 89 61.6 61.0 91.6
 182 3.3 1.8 2.6#



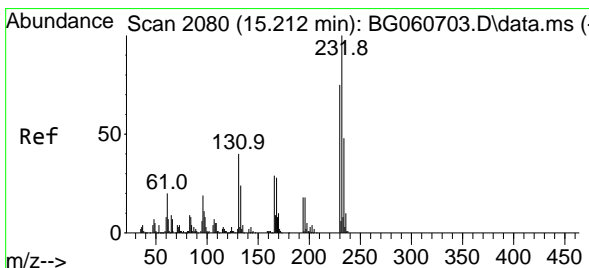
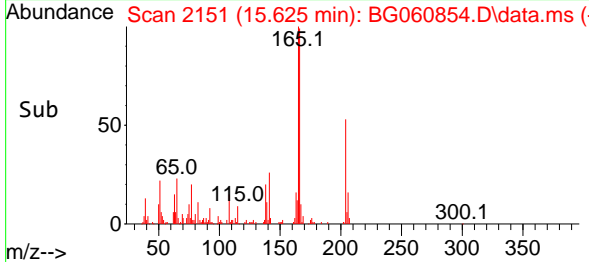
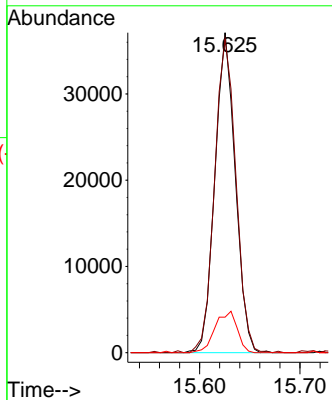
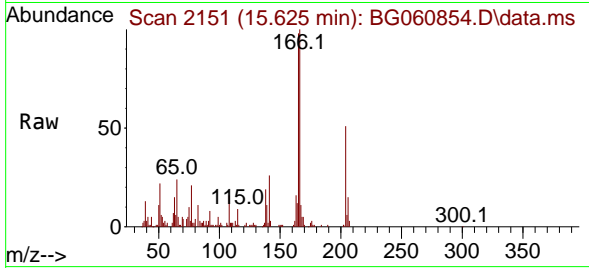


#58
 Fluorene
 Concen: 3.862 ng
 RT: 15.625 min Scan# 2151
 Delta R.T. -0.015 min
 Lab File: BG060854.D
 Acq: 10 Apr 2024 17:53

Instrument : BNA_G
 ClientSampleId : SU-03-04082024MSD

Tgt Ion:166 Resp: 52260

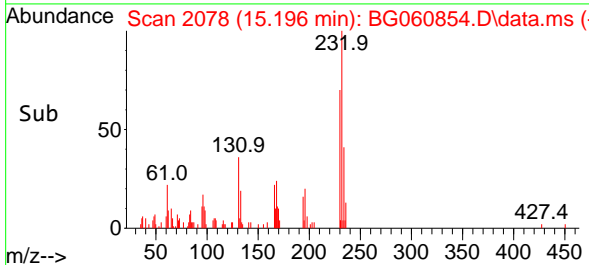
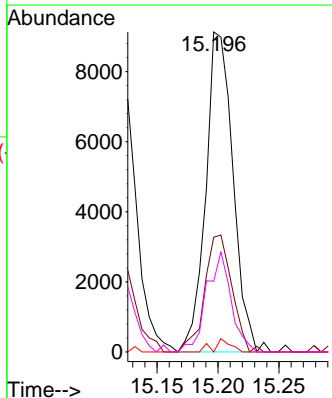
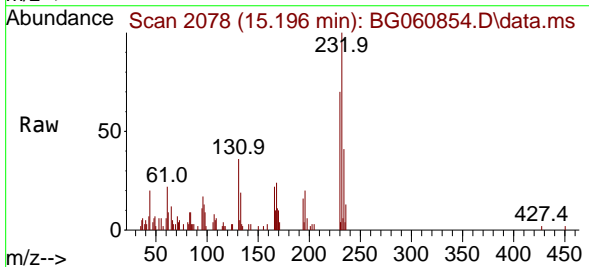
Ion	Ratio	Lower	Upper
166	100		
165	98.1	81.8	122.8
167	11.1	10.9	16.3

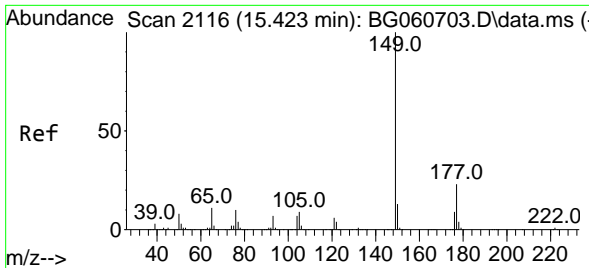


#59
 2,3,4,6-Tetrachlorophenol
 Concen: 3.916 ng
 RT: 15.196 min Scan# 2078
 Delta R.T. -0.016 min
 Lab File: BG060854.D
 Acq: 10 Apr 2024 17:53

Tgt Ion:232 Resp: 14235

Ion	Ratio	Lower	Upper
232	100		
131	36.5	32.2	48.2
130	2.5	2.1	3.1
166	28.1	23.7	35.5

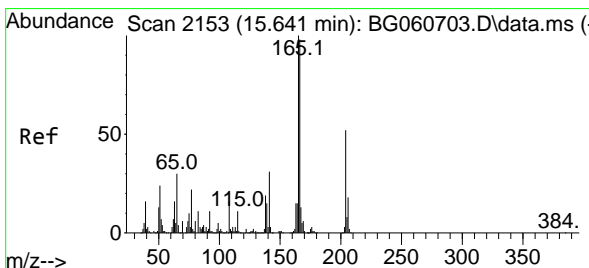
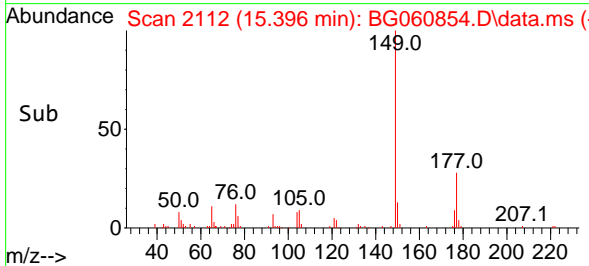
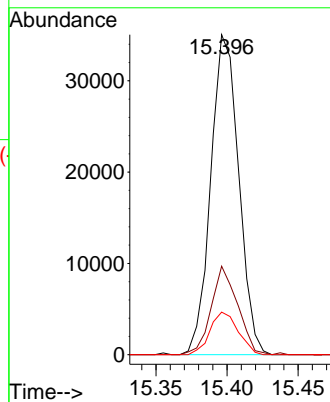
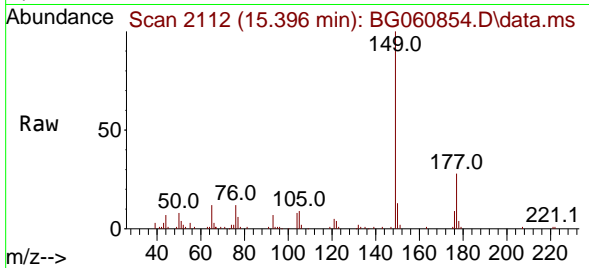




#60
 Diethylphthalate
 Concen: 3.193 ng
 RT: 15.396 min Scan# 2116
 Delta R.T. -0.027 min
 Lab File: BG060854.D
 Acq: 10 Apr 2024 17:53

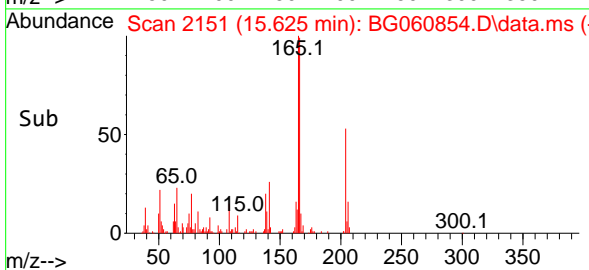
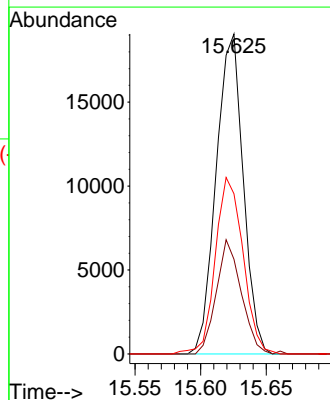
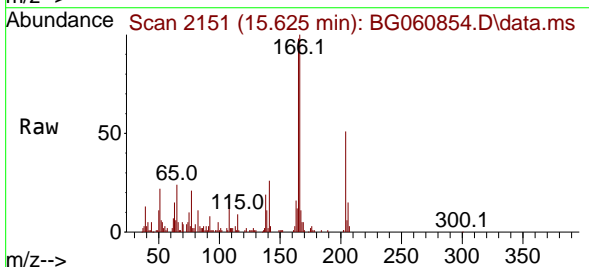
Instrument :
 BNA_G
 ClientSampleId :
 SU-03-04082024MSD

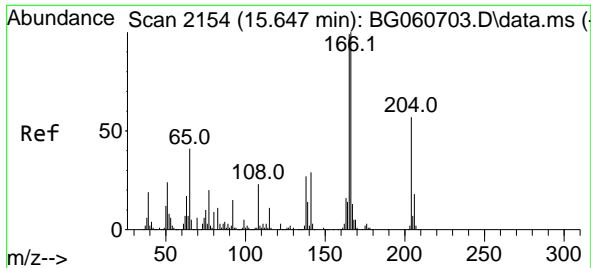
Tgt Ion:149 Resp: 47935
 Ion Ratio Lower Upper
 149 100
 177 27.6 18.0 27.0#
 150 13.3 10.2 15.4



#61
 4-Chlorophenyl-phenylether
 Concen: 3.818 ng
 RT: 15.625 min Scan# 2151
 Delta R.T. -0.016 min
 Lab File: BG060854.D
 Acq: 10 Apr 2024 17:53

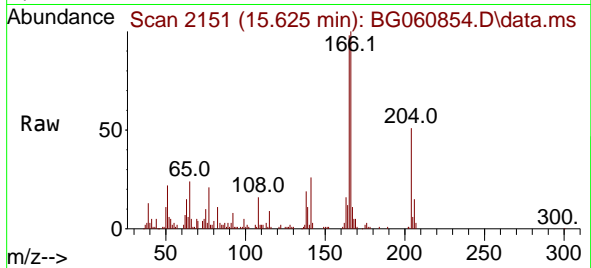
Tgt Ion:204 Resp: 27332
 Ion Ratio Lower Upper
 204 100
 206 29.6 28.3 42.5
 141 50.0 47.2 70.8





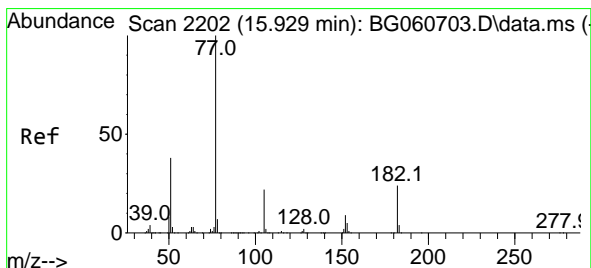
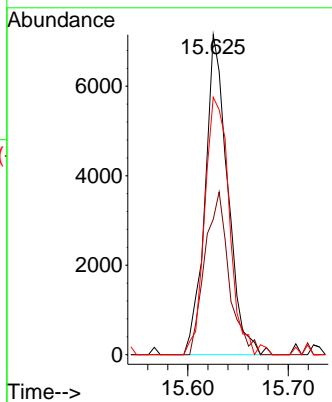
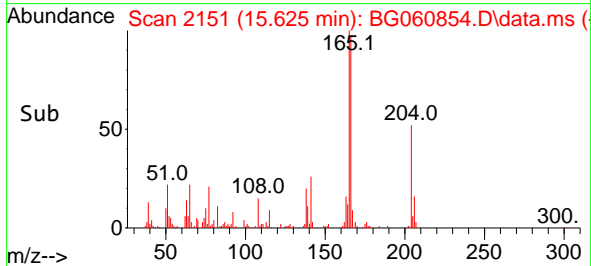
#62
 4-Nitroaniline
 Concen: 4.119 ng
 RT: 15.625 min Scan# 2151
 Delta R.T. -0.021 min
 Lab File: BG060854.D
 Acq: 10 Apr 2024 17:53

Instrument :
 BNA_G
 ClientSampleId :
 SU-03-04082024MSD

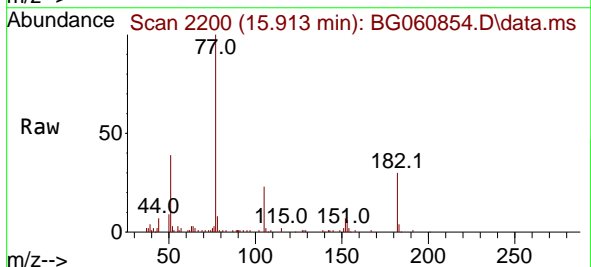


Tgt Ion: 138 Resp: 11238

Ion	Ratio	Lower	Upper
138	100		
92	42.3	36.8	76.8
108	80.5	66.9	106.9

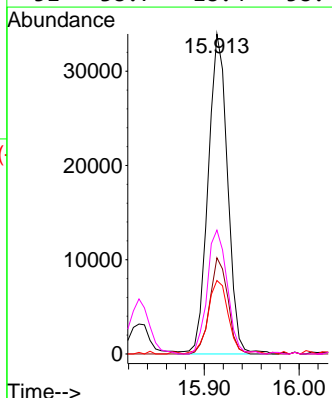
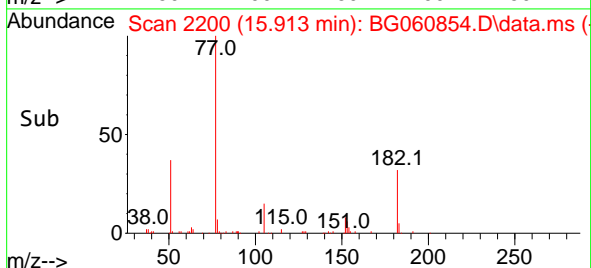


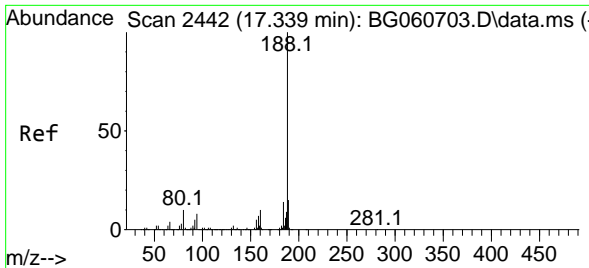
#63
 Azobenzene
 Concen: 3.300 ng
 RT: 15.913 min Scan# 2200
 Delta R.T. -0.016 min
 Lab File: BG060854.D
 Acq: 10 Apr 2024 17:53



Tgt Ion: 77 Resp: 48276

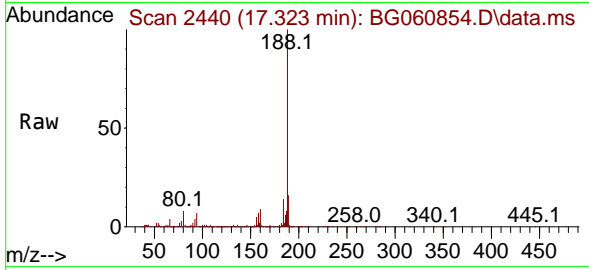
Ion	Ratio	Lower	Upper
77	100		
182	30.0	3.9	43.9
105	22.9	1.7	41.7
51	38.7	18.4	58.4



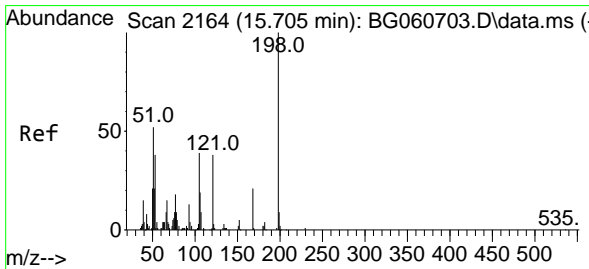
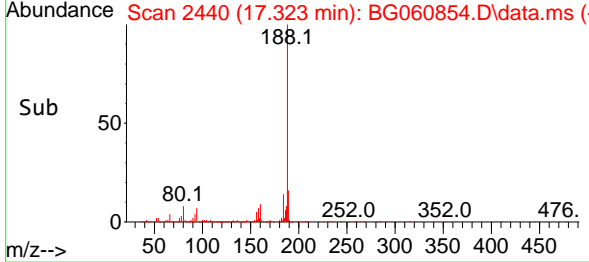
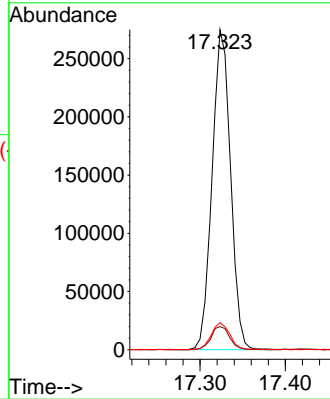


#64
 Phenanthrene-d10
 Concen: 20.000 ng
 RT: 17.323 min Scan# 24
 Delta R.T. -0.015 min
 Lab File: BG060854.D
 Acq: 10 Apr 2024 17:53

Instrument :
 BNA_G
 ClientSampleId :
 SU-03-04082024MSD

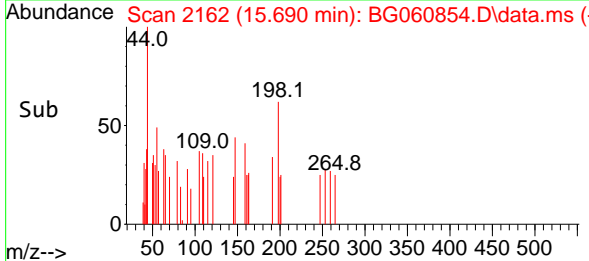
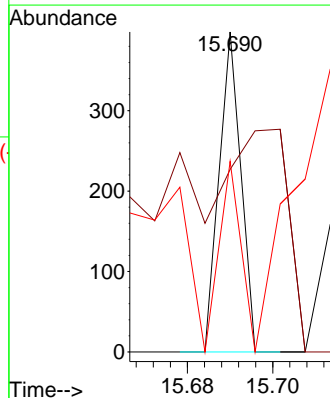
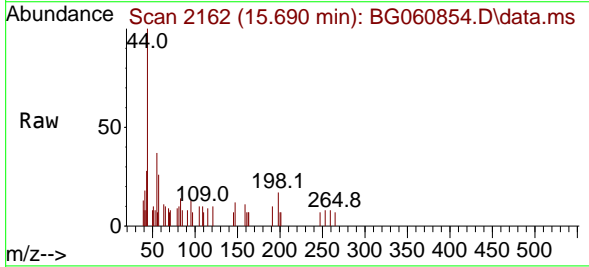


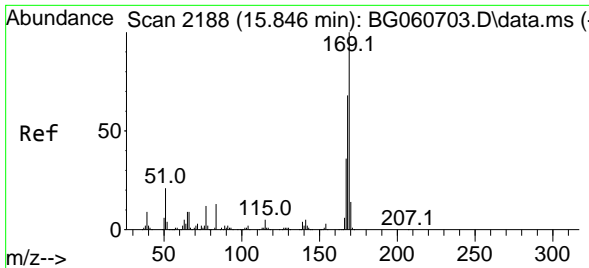
Tgt Ion:188 Resp: 412562
 Ion Ratio Lower Upper
 188 100
 94 7.2 6.6 9.8
 80 8.5 7.6 11.4



#65
 4,6-Dinitro-2-methylphenol
 Concen: 7.104 ng
 RT: 15.690 min Scan# 2162
 Delta R.T. -0.015 min
 Lab File: BG060854.D
 Acq: 10 Apr 2024 17:53

Tgt Ion:198 Resp: 140
 Ion Ratio Lower Upper
 198 100
 51 57.0 36.7 76.7
 105 59.5 19.1 59.1#



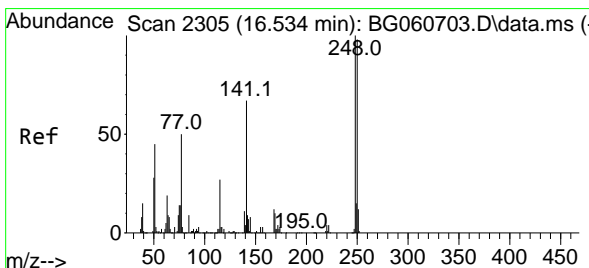
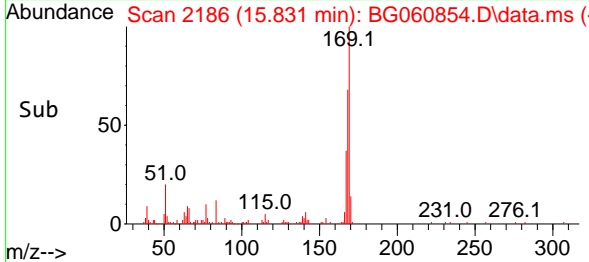
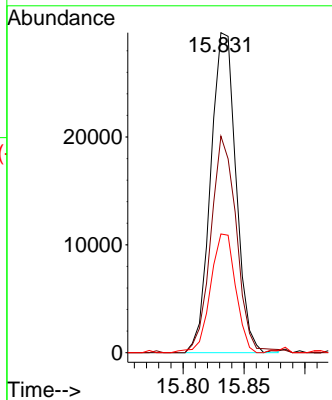
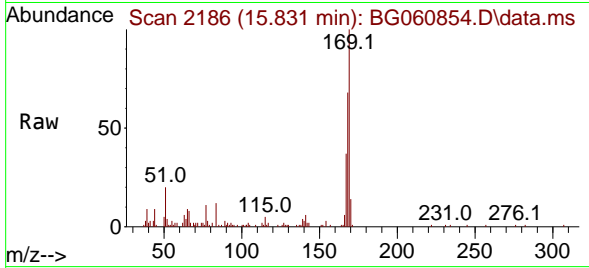


#66
 n-Nitrosodiphenylamine
 Concen: 3.645 ng
 RT: 15.831 min Scan# 2186
 Delta R.T. -0.015 min
 Lab File: BG060854.D
 Acq: 10 Apr 2024 17:53

Instrument :
 BNA_G
 ClientSampleId :
 SU-03-04082024MSD

Tgt Ion:169 Resp: 42969

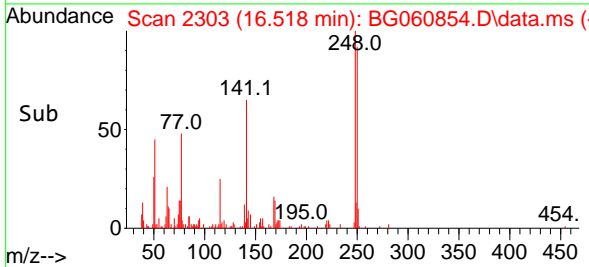
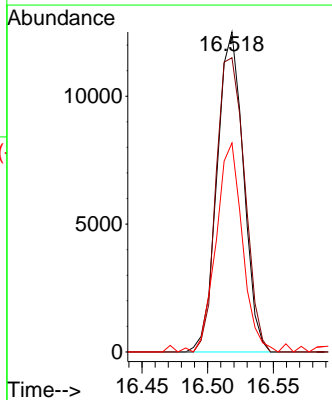
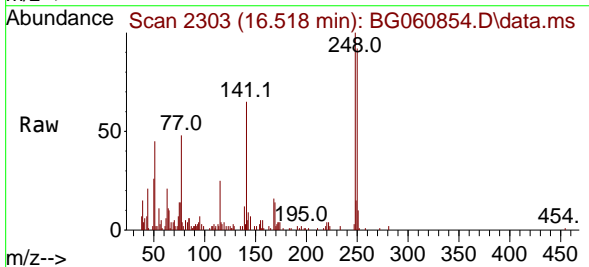
Ion	Ratio	Lower	Upper
169	100		
168	67.7	54.5	81.7
167	37.1	29.2	43.8

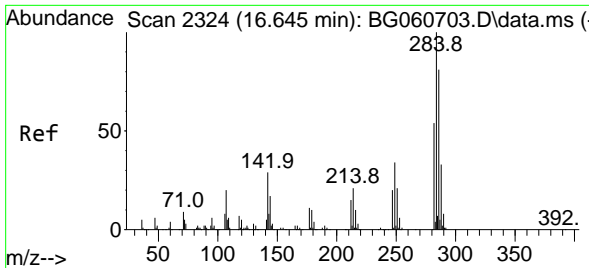


#67
 4-Bromophenyl-phenylether
 Concen: 4.176 ng
 RT: 16.518 min Scan# 2303
 Delta R.T. -0.016 min
 Lab File: BG060854.D
 Acq: 10 Apr 2024 17:53

Tgt Ion:248 Resp: 17483

Ion	Ratio	Lower	Upper
248	100		
250	92.0	78.3	117.5
141	65.3	53.7	80.5

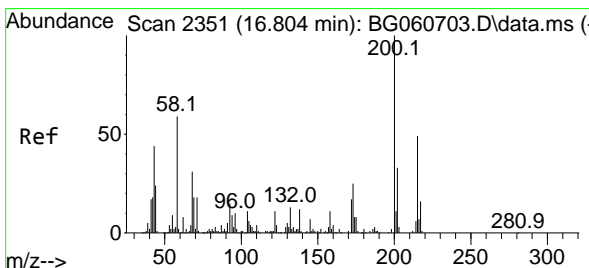
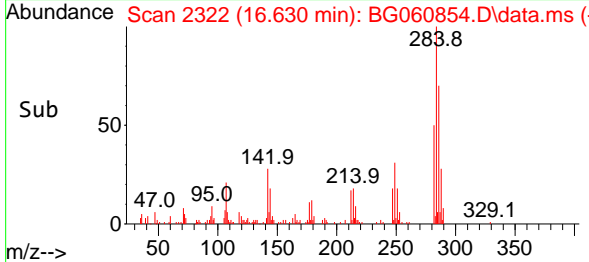
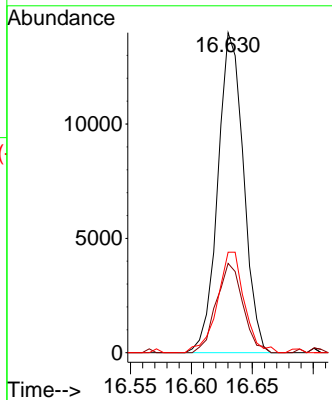
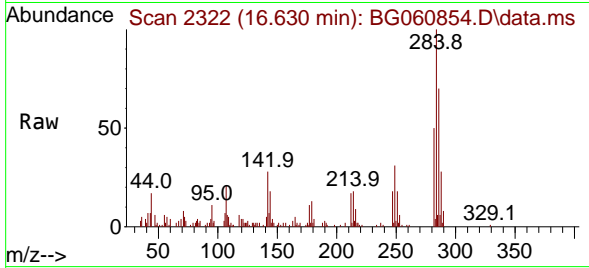




#68
 Hexachlorobenzene
 Concen: 4.339 ng
 RT: 16.630 min Scan# 21
 Delta R.T. -0.015 min
 Lab File: BG060854.D
 Acq: 10 Apr 2024 17:53

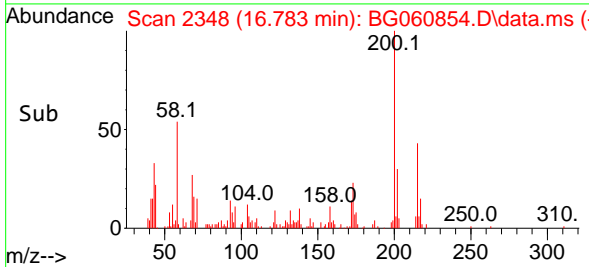
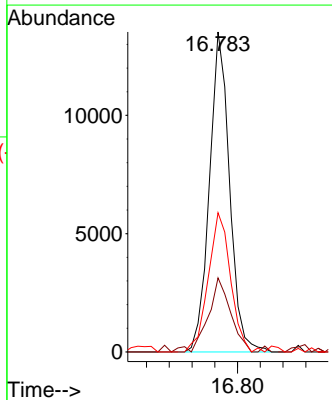
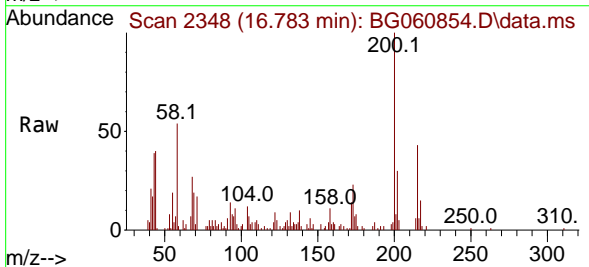
Instrument :
 BNA_G
 ClientSampleId :
 SU-03-04082024MSD

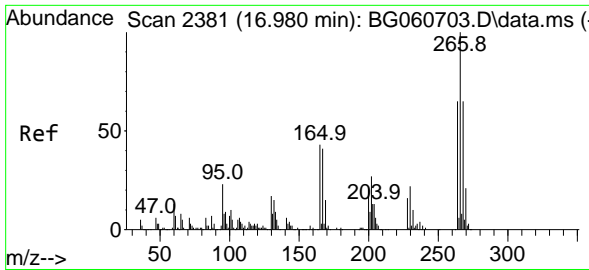
Tgt Ion:284 Resp: 20508
 Ion Ratio Lower Upper
 284 100
 142 27.9 22.9 34.3
 249 31.4 27.1 40.7



#69
 Atrazine
 Concen: 4.040 ng
 RT: 16.783 min Scan# 2348
 Delta R.T. -0.021 min
 Lab File: BG060854.D
 Acq: 10 Apr 2024 17:53

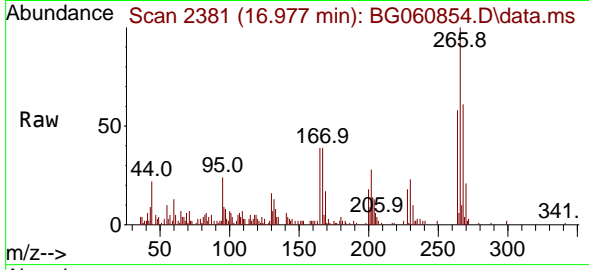
Tgt Ion:200 Resp: 16654
 Ion Ratio Lower Upper
 200 100
 173 23.1 5.2 45.2
 215 43.5 28.8 68.8



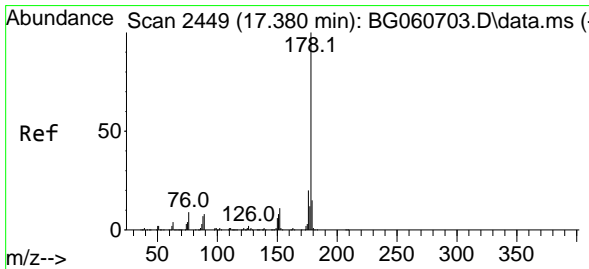
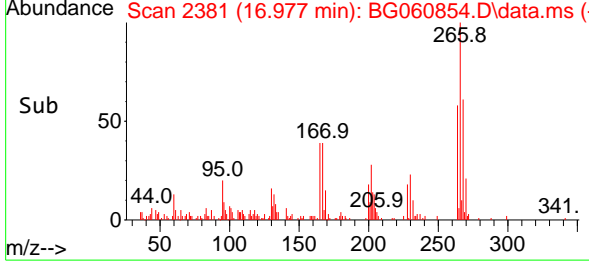
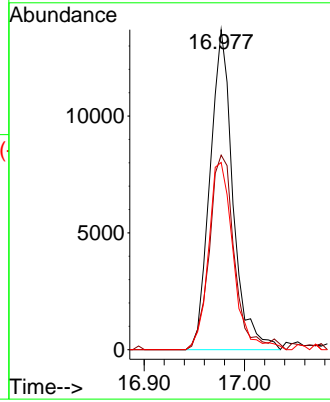


#70
 Pentachlorophenol
 Concen: 7.064 ng
 RT: 16.977 min Scan# 21
 Delta R.T. -0.004 min
 Lab File: BG060854.D
 Acq: 10 Apr 2024 17:53

Instrument :
 BNA_G
 ClientSampleId :
 SU-03-04082024MSD

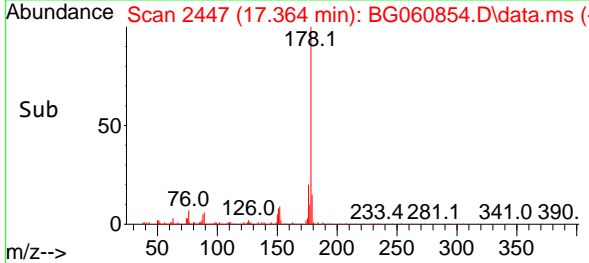
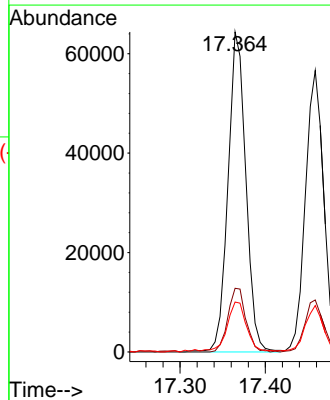
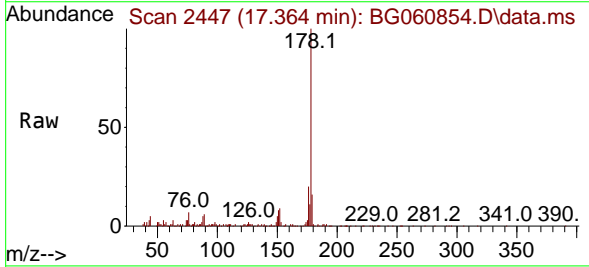


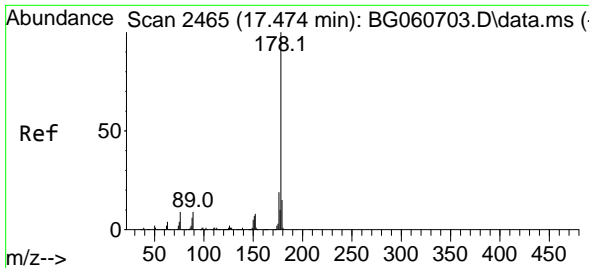
Tgt Ion:266 Resp: 21787
 Ion Ratio Lower Upper
 266 100
 268 60.8 52.2 78.4
 264 58.5 51.8 77.6



#71
 Phenanthrene
 Concen: 4.359 ng
 RT: 17.364 min Scan# 2447
 Delta R.T. -0.015 min
 Lab File: BG060854.D
 Acq: 10 Apr 2024 17:53

Tgt Ion:178 Resp: 93518
 Ion Ratio Lower Upper
 178 100
 176 19.9 15.8 23.6
 179 15.6 12.2 18.4



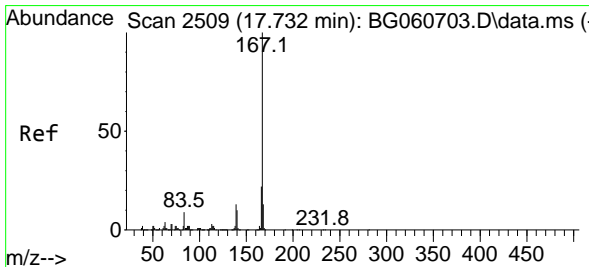
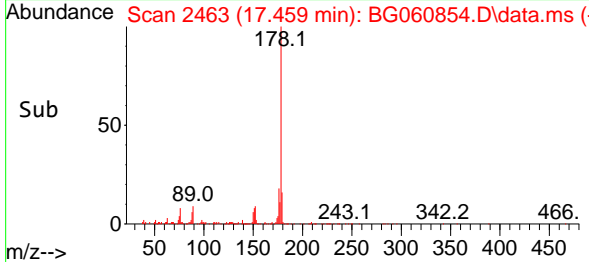
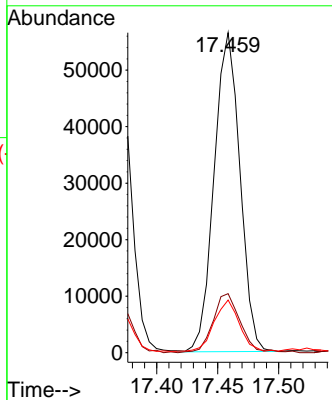
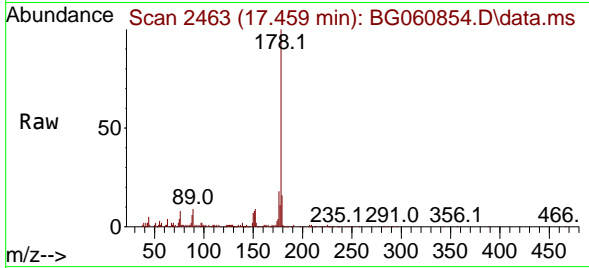


#72
 Anthracene
 Concen: 3.816 ng
 RT: 17.459 min Scan# 24
 Delta R.T. -0.015 min
 Lab File: BG060854.D
 Acq: 10 Apr 2024 17:53

Instrument :
 BNA_G
 ClientSampleId :
 SU-03-04082024MSD

Tgt Ion:178 Resp: 83156

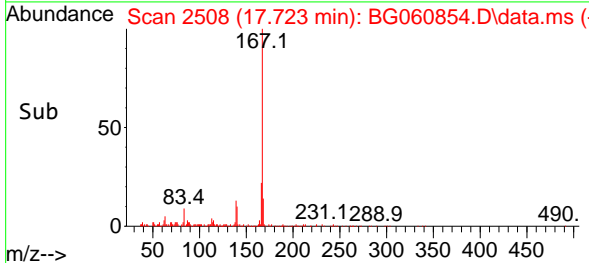
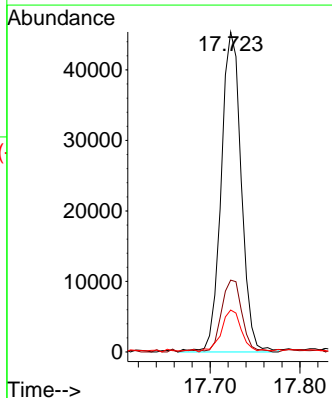
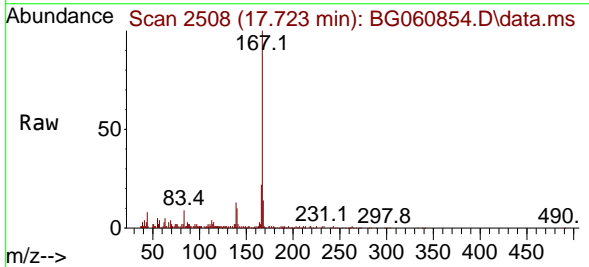
Ion	Ratio	Lower	Upper
178	100		
176	18.5	15.5	23.3
179	16.5	12.2	18.2

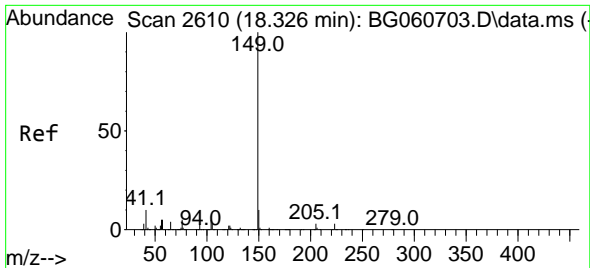


#73
 Carbazole
 Concen: 3.669 ng
 RT: 17.723 min Scan# 2508
 Delta R.T. -0.009 min
 Lab File: BG060854.D
 Acq: 10 Apr 2024 17:53

Tgt Ion:167 Resp: 70487

Ion	Ratio	Lower	Upper
167	100		
166	22.5	18.0	27.0
139	13.1	10.5	15.7

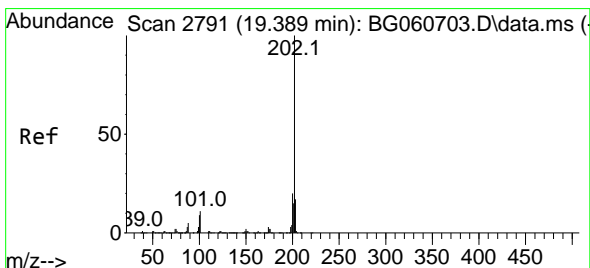
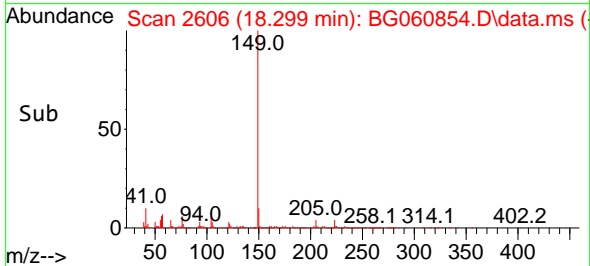
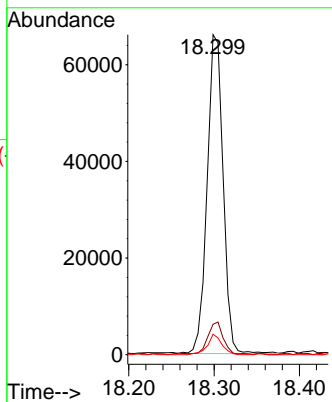
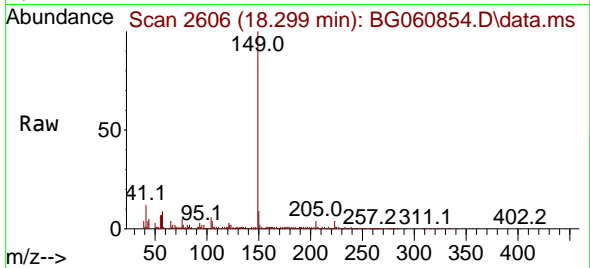




#74
 Di-n-butylphthalate
 Concen: 3.595 ng
 RT: 18.299 min Scan# 2606
 Delta R.T. -0.027 min
 Lab File: BG060854.D
 Acq: 10 Apr 2024 17:53

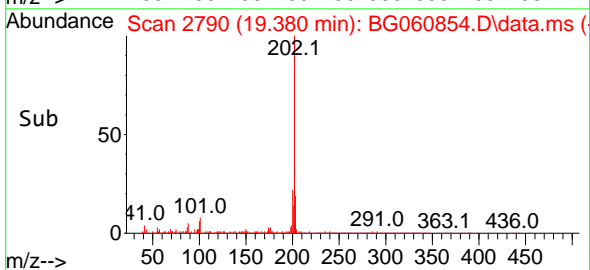
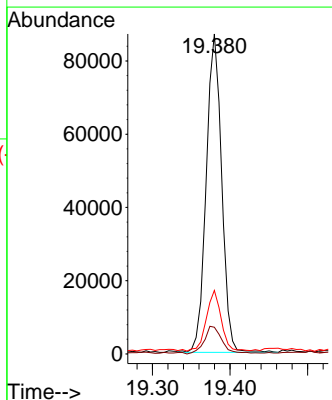
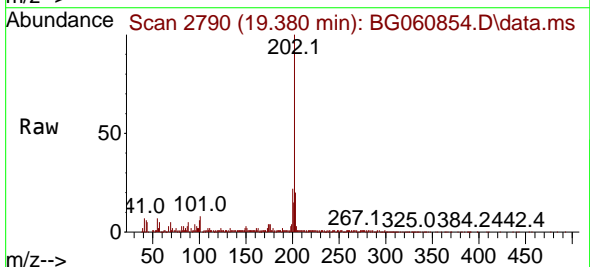
Instrument : BNA_G
 ClientSampleId : SU-03-04082024MSD

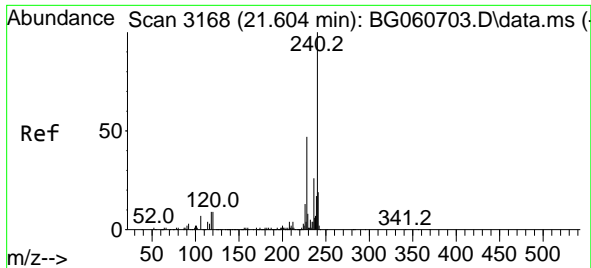
Tgt Ion	Resp	Lower	Upper
149	86118		
150	9.5	7.7	11.5
104	6.4	4.2	6.4#



#75
 Fluoranthene
 Concen: 4.619 ng
 RT: 19.380 min Scan# 2790
 Delta R.T. -0.009 min
 Lab File: BG060854.D
 Acq: 10 Apr 2024 17:53

Tgt Ion	Resp	Lower	Upper
202	120250		
201	8.3	0.0	30.8
203	19.8	0.0	37.4

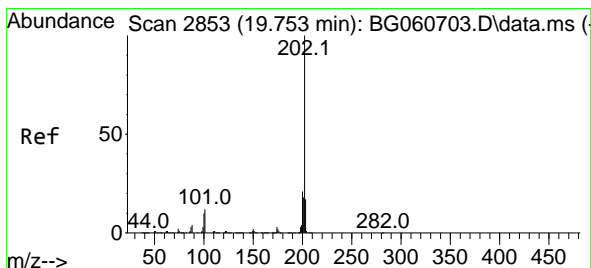
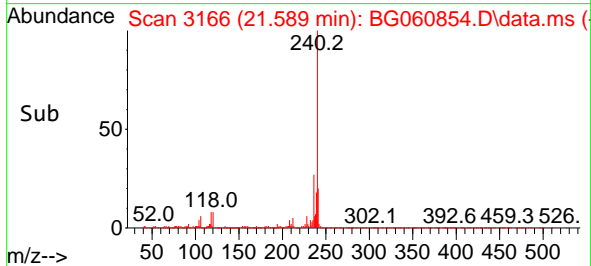
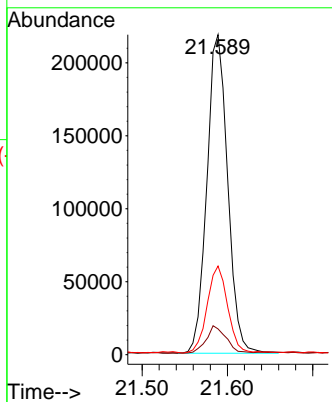
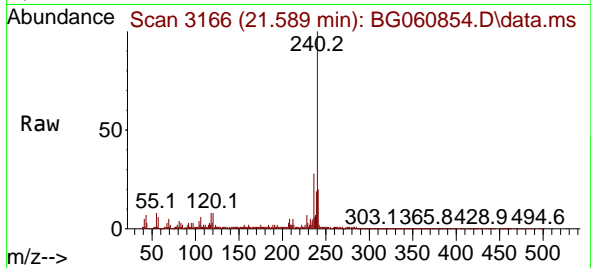




#76
 Chrysene-d12
 Concen: 20.000 ng
 RT: 21.589 min Scan# 3166
 Delta R.T. -0.015 min
 Lab File: BG060854.D
 Acq: 10 Apr 2024 17:53

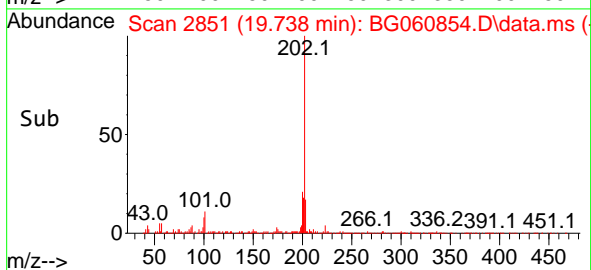
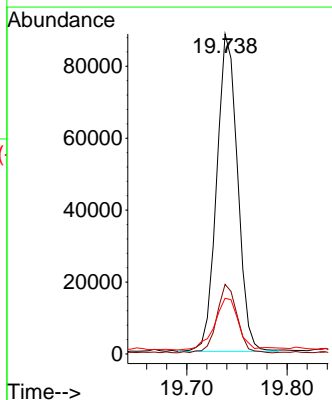
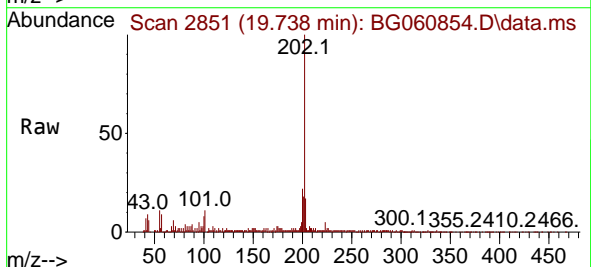
Instrument :
 BNA_G
 ClientSampleId :
 SU-03-04082024MSD

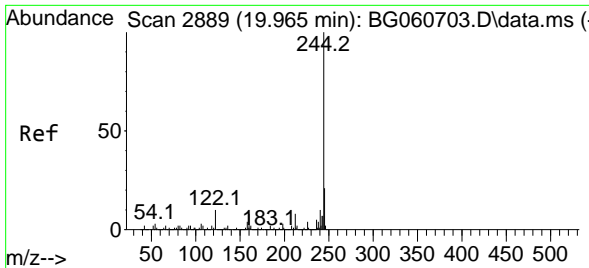
Tgt Ion:240 Resp: 370515
 Ion Ratio Lower Upper
 240 100
 120 8.0 7.1 10.7
 236 27.7 20.7 31.1



#78
 Pyrene
 Concen: 4.918 ng
 RT: 19.738 min Scan# 2851
 Delta R.T. -0.015 min
 Lab File: BG060854.D
 Acq: 10 Apr 2024 17:53

Tgt Ion:202 Resp: 127434
 Ion Ratio Lower Upper
 202 100
 200 21.8 17.0 25.4
 203 17.4 14.0 21.0

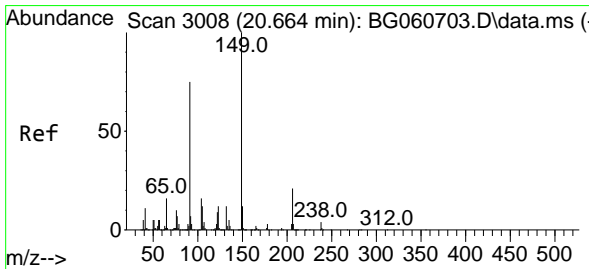
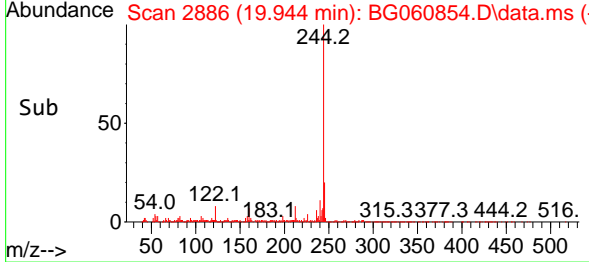
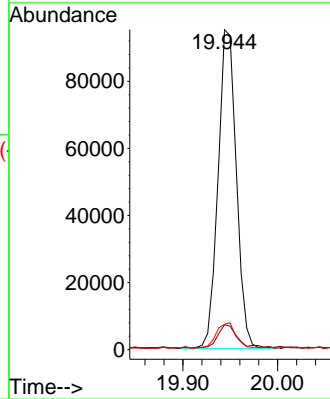
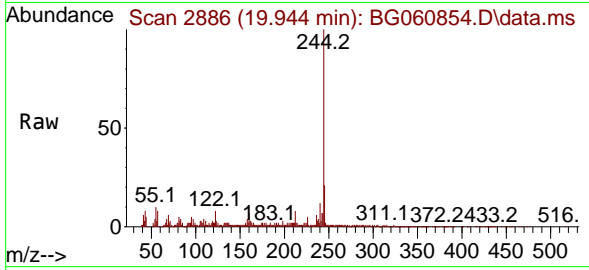




#79
 Terphenyl-d14
 Concen: 6.082 ng
 RT: 19.944 min Scan# 21
 Delta R.T. -0.021 min
 Lab File: BG060854.D
 Acq: 10 Apr 2024 17:53

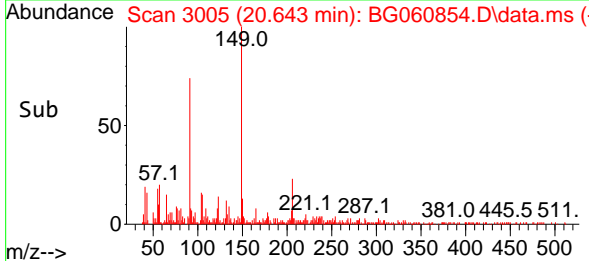
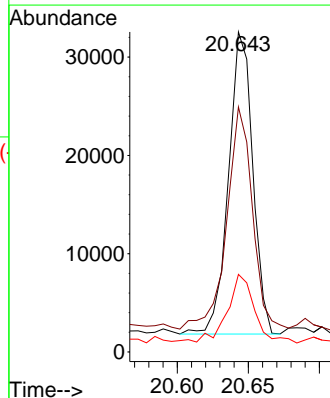
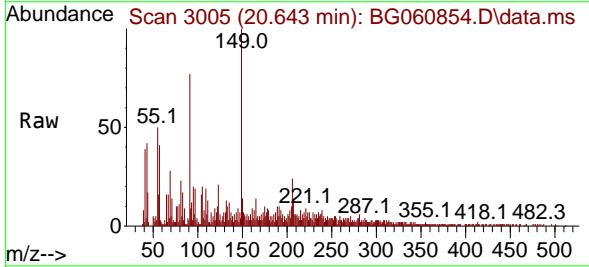
Instrument : BNA_G
 ClientSampleId : SU-03-04082024MSD

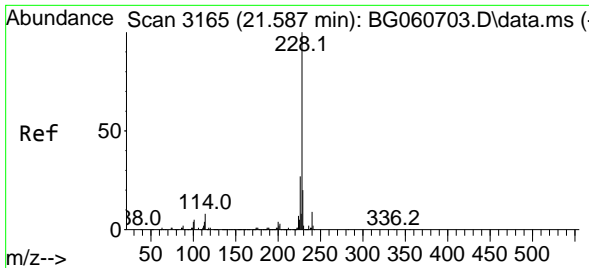
Tgt Ion	Resp	Lower	Upper
244	127981		
212	7.8	6.2	9.2
122	8.0	7.8	11.8



#80
 Butylbenzylphthalate
 Concen: 3.854 ng
 RT: 20.643 min Scan# 3005
 Delta R.T. -0.021 min
 Lab File: BG060854.D
 Acq: 10 Apr 2024 17:53

Tgt Ion	Resp	Lower	Upper
149	36434		
91	76.5	60.1	90.1
206	24.3	16.8	25.2



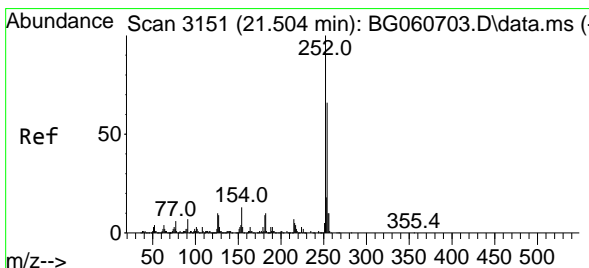
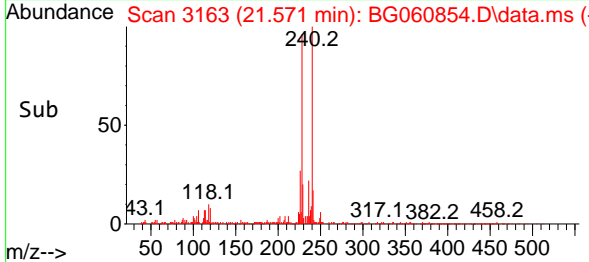
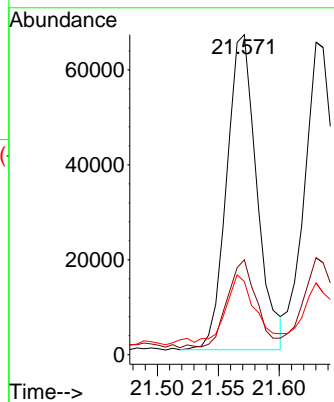
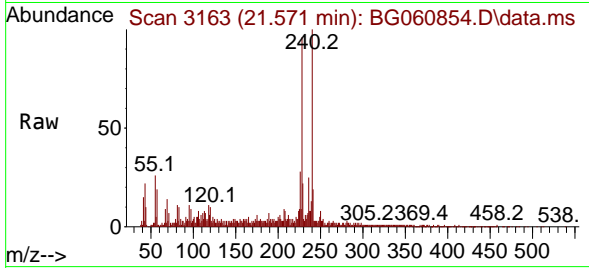


#81
 Benzo(a)anthracene
 Concen: 4.376 ng
 RT: 21.571 min Scan# 3163
 Delta R.T. -0.015 min
 Lab File: BG060854.D
 Acq: 10 Apr 2024 17:53

Instrument :
 BNA_G
 ClientSampleId :
 SU-03-04082024MSD

Tgt Ion:228 Resp: 114289

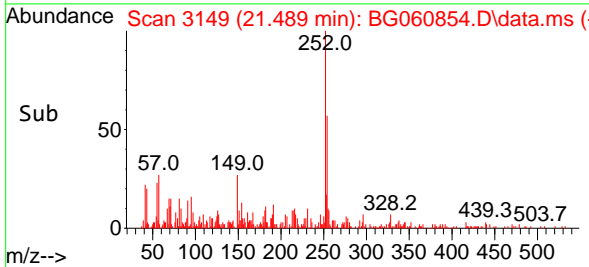
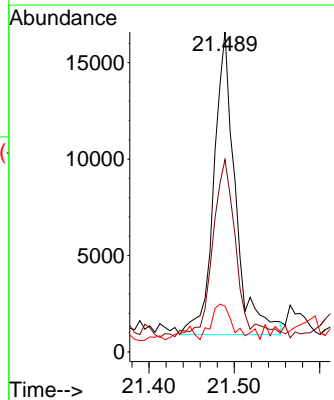
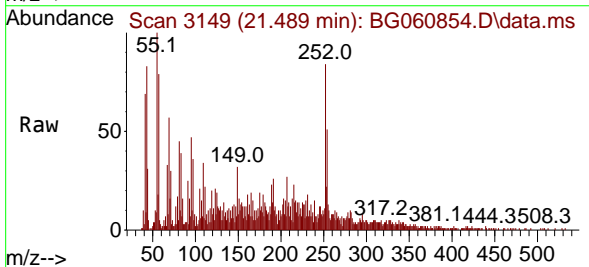
Ion	Ratio	Lower	Upper
228	100		
226	29.6	21.7	32.5
229	22.9	15.8	23.8

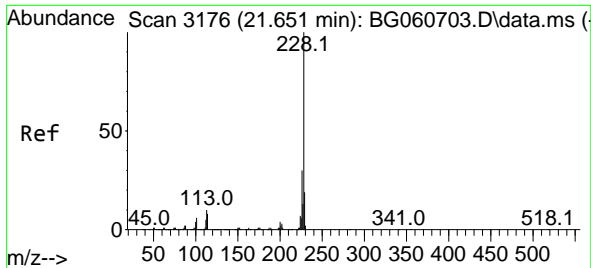


#82
 3,3'-Dichlorobenzidine
 Concen: 3.128 ng
 RT: 21.489 min Scan# 3149
 Delta R.T. -0.015 min
 Lab File: BG060854.D
 Acq: 10 Apr 2024 17:53

Tgt Ion:252 Resp: 27589

Ion	Ratio	Lower	Upper
252	100		
254	60.2	52.6	78.8
126	14.3	7.8	11.8



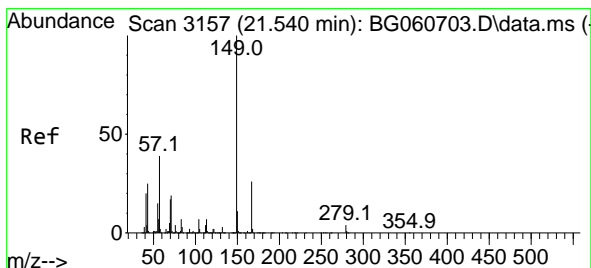
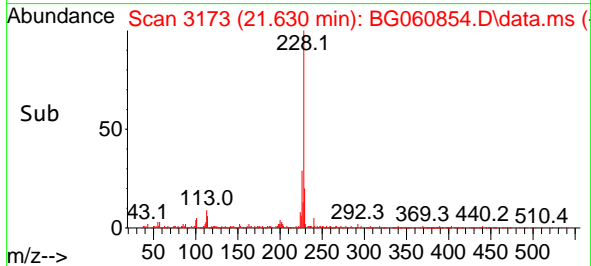
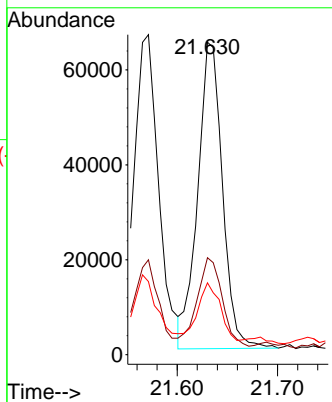
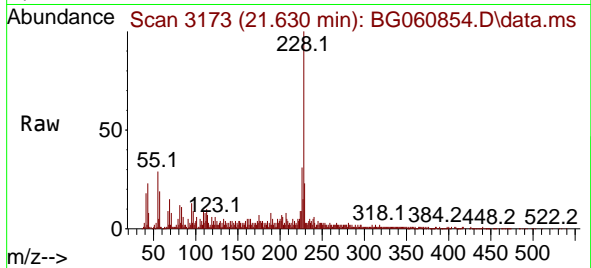


#83
 Chrysene
 Concen: 4.412 ng
 RT: 21.630 min Scan# 3176
 Delta R.T. -0.021 min
 Lab File: BG060854.D
 Acq: 10 Apr 2024 17:53

Instrument : BNA_G
 ClientSampleId : SU-03-04082024MSD

Tgt Ion:228 Resp: 111056

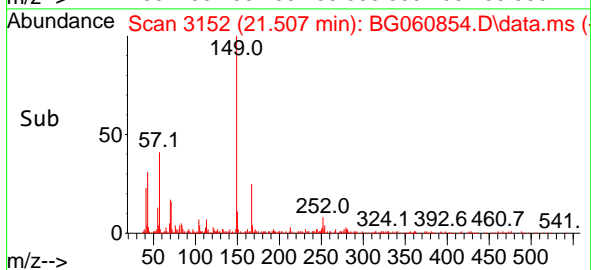
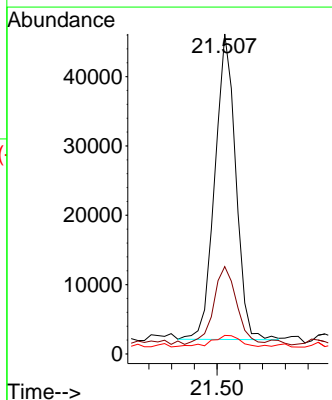
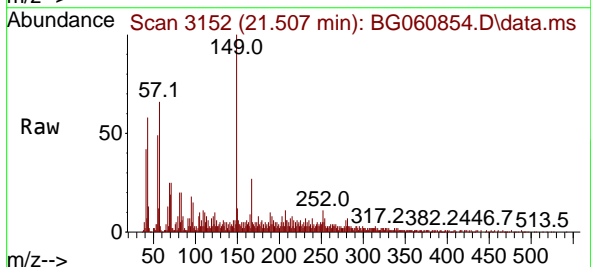
Ion	Ratio	Lower	Upper
228	100		
226	31.1	24.2	36.4
229	23.0	15.5	23.3

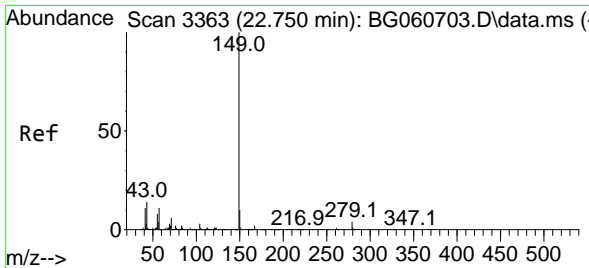


#84
 Bis(2-ethylhexyl)phthalate
 Concen: 3.734 ng
 RT: 21.507 min Scan# 3152
 Delta R.T. -0.033 min
 Lab File: BG060854.D
 Acq: 10 Apr 2024 17:53

Tgt Ion:149 Resp: 56264

Ion	Ratio	Lower	Upper
149	100		
167	27.3	20.6	30.8
279	5.8	3.0	4.4

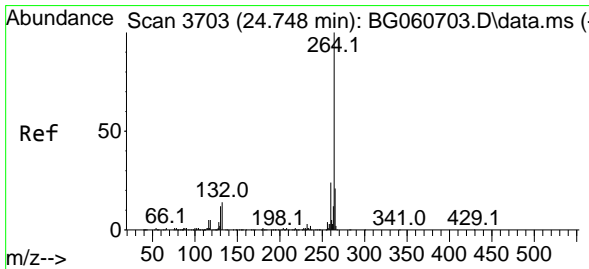
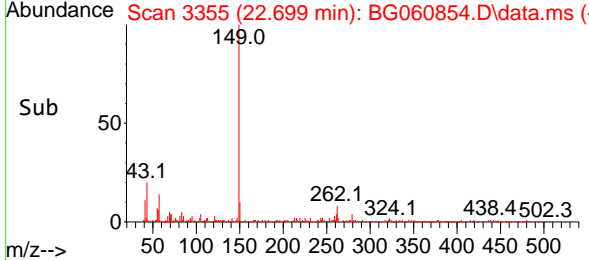
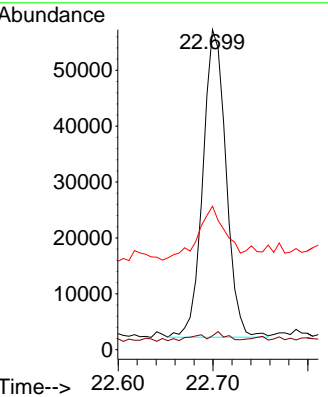
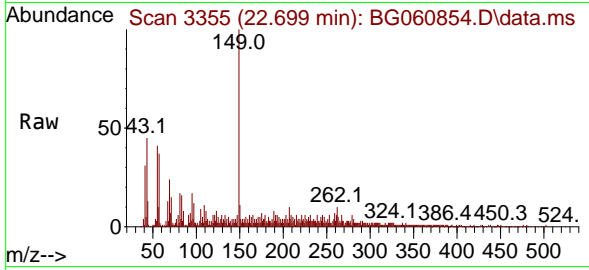




#85
 Di-n-octyl phthalate
 Concen: 3.800 ng
 RT: 22.699 min Scan# 31
 Delta R.T. -0.051 min
 Lab File: BG060854.D
 Acq: 10 Apr 2024 17:53

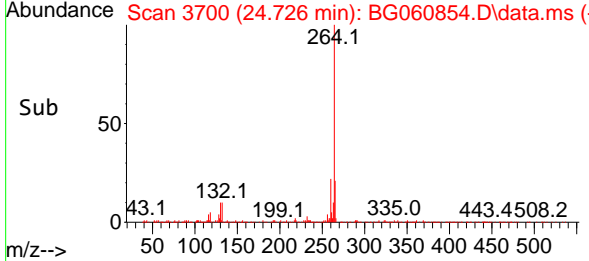
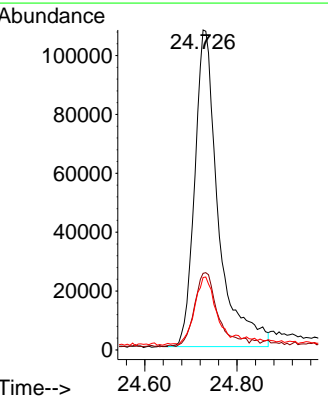
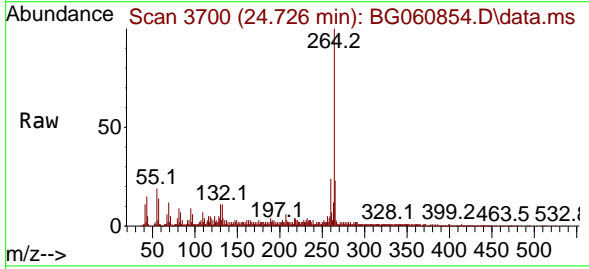
Instrument :
 BNA_G
 ClientSampleId :
 SU-03-04082024MSD

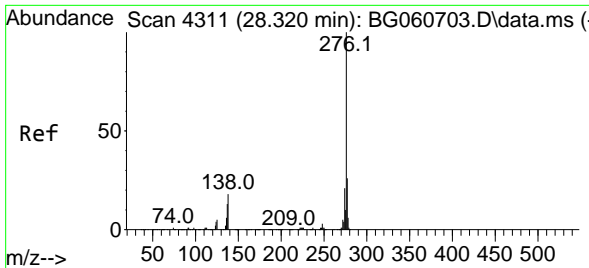
Tgt Ion	Resp	Lower	Upper
149	93263	100	100
167	1.8	1.2	1.8
43	21.2	11.3	16.9



#86
 Perylene-d12
 Concen: 20.000 ng
 RT: 24.726 min Scan# 3700
 Delta R.T. -0.021 min
 Lab File: BG060854.D
 Acq: 10 Apr 2024 17:53

Tgt Ion	Resp	Lower	Upper
264	382502	100	100
260	23.9	19.5	29.3
265	22.7	16.9	25.3

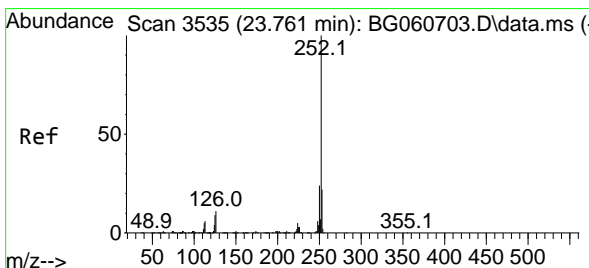
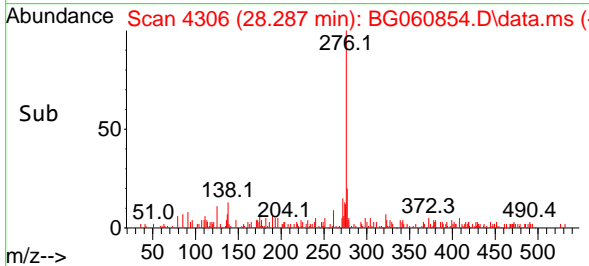
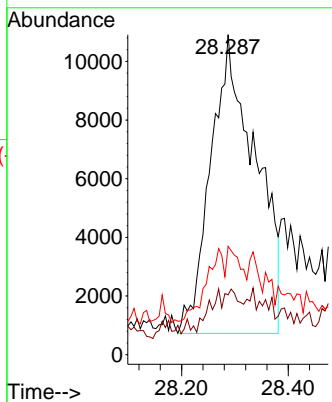
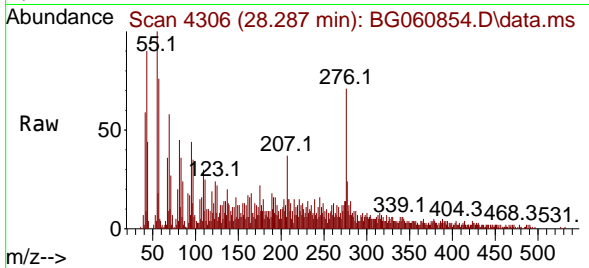




#87
 Indeno(1,2,3-cd)pyrene
 Concen: 2.206 ng
 RT: 28.287 min Scan# 41
 Delta R.T. -0.033 min
 Lab File: BG060854.D
 Acq: 10 Apr 2024 17:53

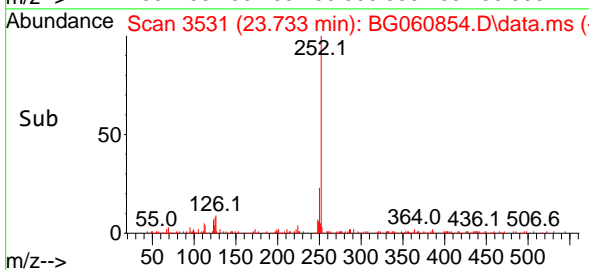
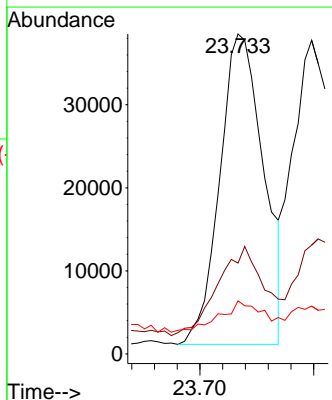
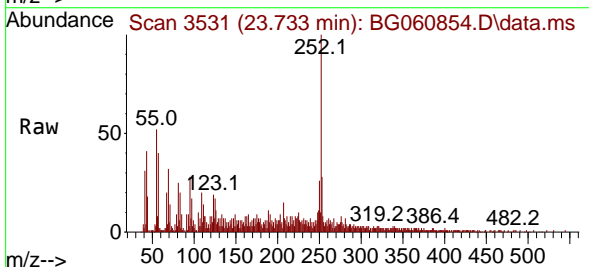
Instrument :
 BNA_G
 ClientSampleId :
 SU-03-04082024MSD

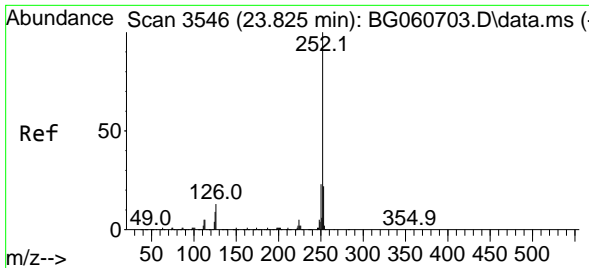
Tgt Ion	Resp	Lower	Upper
276	100		
138	0.0	12.4	18.6#
277	5.3	20.2	30.2#



#88
 Benzo(b)fluoranthene
 Concen: 4.548 ng
 RT: 23.733 min Scan# 3531
 Delta R.T. -0.027 min
 Lab File: BG060854.D
 Acq: 10 Apr 2024 17:53

Tgt Ion	Resp	Lower	Upper
252	100		
253	28.4	17.8	26.8#
125	16.6	7.1	10.7#

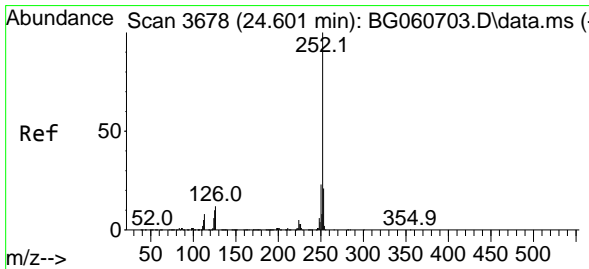
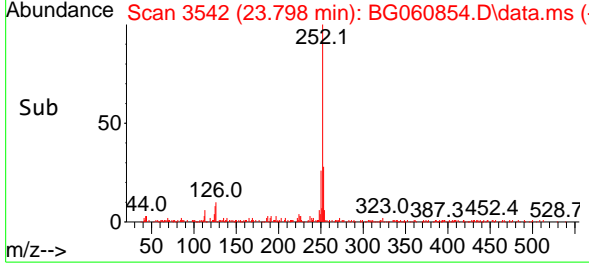
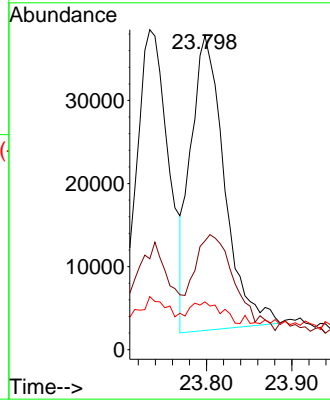
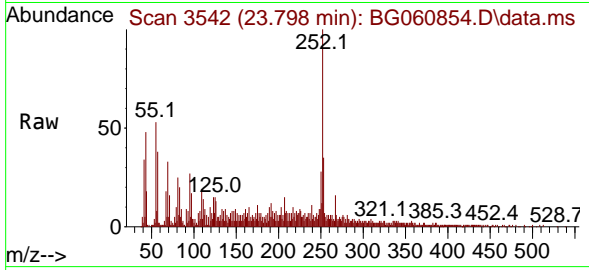




#89
 Benzo(k)fluoranthene
 Concen: 4.333 ng
 RT: 23.798 min Scan# 31
 Delta R.T. -0.027 min
 Lab File: BG060854.D
 Acq: 10 Apr 2024 17:53

Instrument :
 BNA_G
 ClientSampleId :
 SU-03-04082024MSD

Tgt Ion:252 Resp: 97448
 Ion Ratio Lower Upper
 252 100
 253 34.7 17.6 26.4#
 125 15.2 7.5 11.3#



#90
 Benzo(a)pyrene
 Concen: 4.182 ng
 RT: 24.580 min Scan# 3675
 Delta R.T. -0.021 min
 Lab File: BG060854.D
 Acq: 10 Apr 2024 17:53

Tgt Ion:252 Resp: 89297
 Ion Ratio Lower Upper
 252 100
 253 28.1 16.8 25.2#
 125 18.2 7.6 11.4#

