

Data Path : Z:\HPCHEM1\BNA G\DATA\BG041217\
 Data File : BG026640.D
 Acq On : 12 Apr 2017 17:54
 Operator : SJ/MA
 Sample : I2635-01
 Misc :
 ALS Vial : 7 Sample Multiplier: 1

Instrument :
 BNA_G
 ClientSampleId :

Quant Time: Apr 13 01:14:15 2017
 Quant Method : Z:\HPCHEM1\BNA G\METHODS\8270-BG032017.M
 Quant Title : ASP BNA STANDARDS FOR 5 POINT CALIBRATION
 QLast Update : Mon Mar 20 17:43:27 2017
 Response via : Initial Calibration

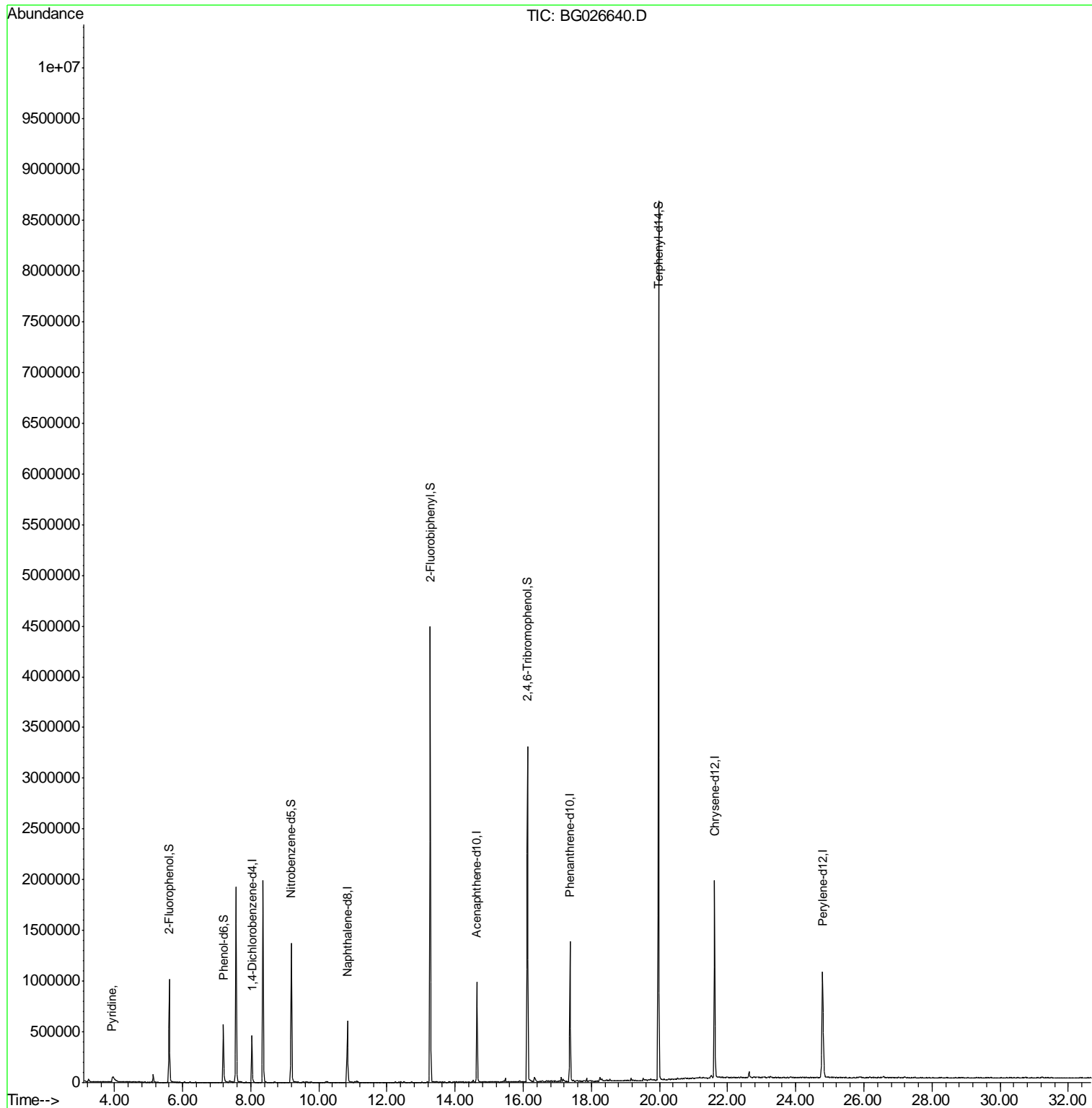
Internal Standards	R.T.	QIon	Response	Conc	Units	Dev(Min)
1) 1,4-Dichlorobenzene-d4	8.03	152	150401	20.00	ng	-0.01
21) Naphthalene-d8	10.83	136	605535	20.00	ng	-0.01
38) Acenaphthene-d10	14.64	164	362819	20.00	ng	-0.01
63) Phenanthrene-d10	17.37	188	926255	20.00	ng	-0.02
75) Chrysene-d12	21.62	240	1236752	20.00	ng	-0.02
86) Perylene-d12	24.79	264	1153533	20.00	ng	-0.03
System Monitoring Compounds						
5) 2-Fluorophenol	5.61	112	545089	64.33	ng	0.00
7) Phenol-d6	7.19	99	437211	38.43	ng	-0.01
23) Nitrobenzene-d5	9.19	82	889620	88.34	ng	-0.01
41) 2,4,6-Tribromophenol	16.12	330	724562	174.39	ng	-0.01
44) 2-Fluorobiphenyl	13.27	172	2486236	96.10	ng	-0.01
78) Terphenyl-d14	19.97	244	3677368	72.21	ng	-0.01
Target Compounds						
3) Pyridine	3.94	79	116130	11.15	ng	Qvalue # 62

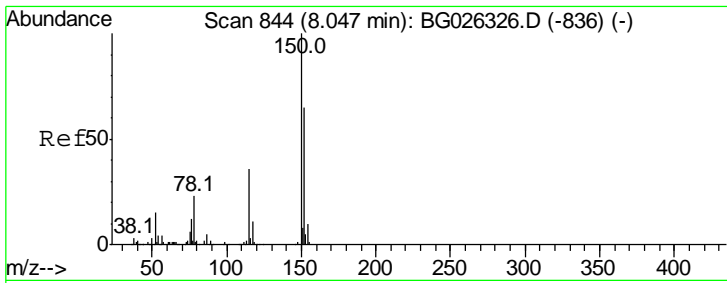
(#) = qualifier out of range (m) = manual integration (+) = signals summed

Data Path : Z:\HPCHEM1\BNA G\DATA\BG041217\
Data File : BG026640.D
Acq On : 12 Apr 2017 17:54
Operator : SJ/MA
Sample : I2635-01
Misc :
ALS Vial : 7 Sample Multiplier: 1

Instrument :
BNA_G
ClientSampleId :

Quant Time: Apr 13 01:14:15 2017
Quant Method : Z:\HPCHEM1\BNA G\METHODS\8270-BG032017.M
Quant Title : ASP BNA STANDARDS FOR 5 POINT CALIBRATION
QLast Update : Mon Mar 20 17:43:27 2017
Response via : Initial Calibration

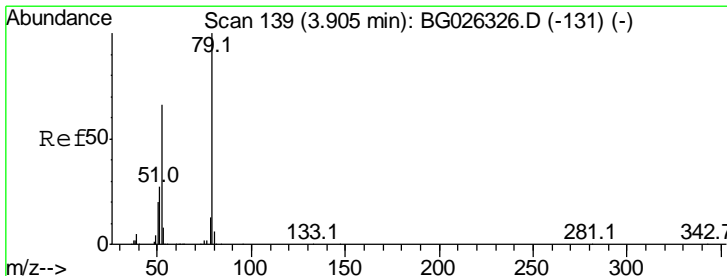
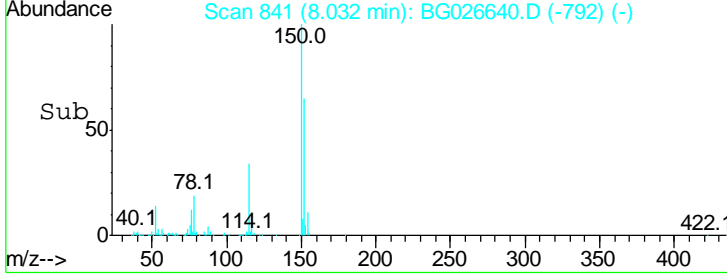
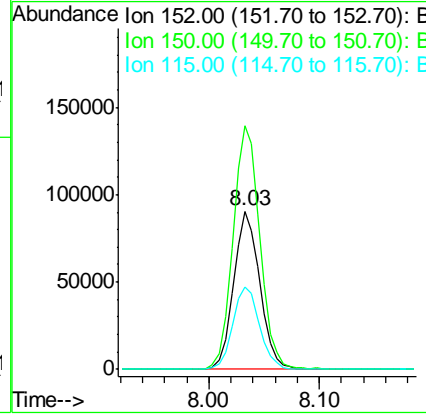
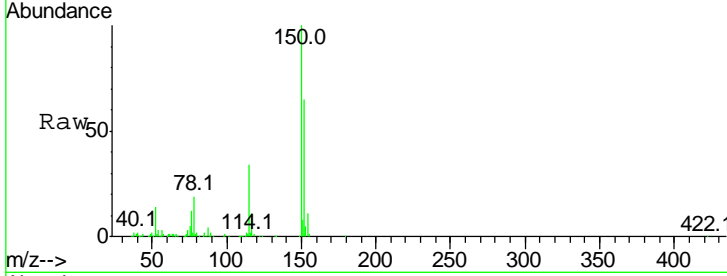




#1
 1,4-Dichlorobenzene-d4
 Concen: 20.00 ng
 RT: 8.03 min Scan# 841
 Delta R.T. -0.01 min
 Lab File: BG026640.D
 Acq: 12 Apr 2017 17:54

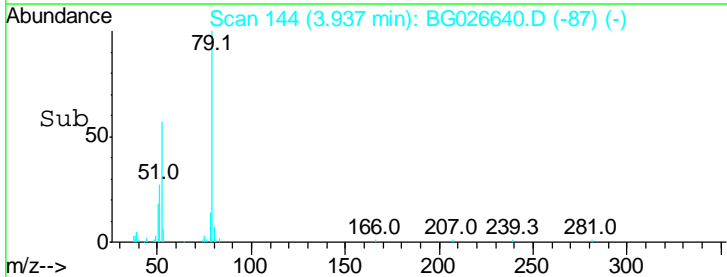
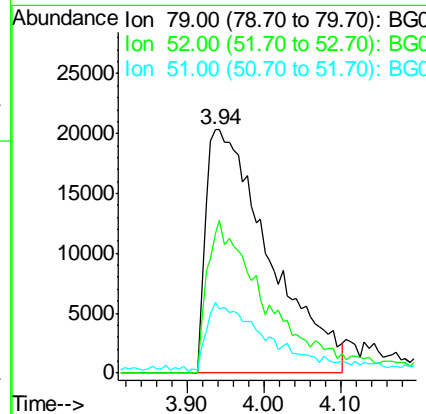
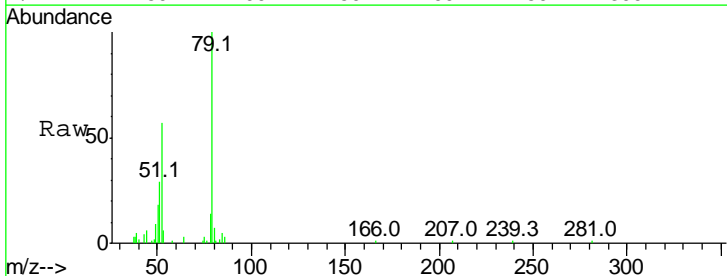
Instrument :
 BNA_G
 ClientSampled :

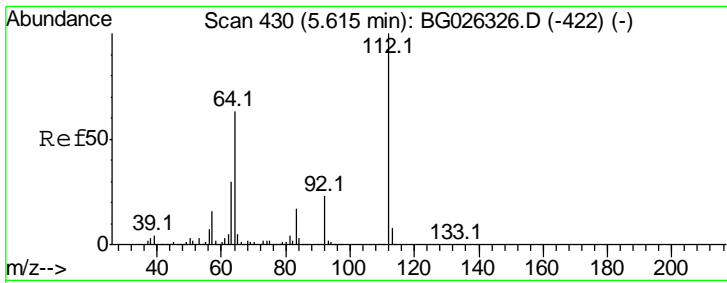
Tgt Ion	Resp	Lower	Upper
152	100		
150	154.3	114.0	171.0
115	52.3	48.1	72.1



#3
 Pyridine
 Concen: 11.15 ng
 RT: 3.94 min Scan# 144
 Delta R.T. 0.03 min
 Lab File: BG026640.D
 Acq: 12 Apr 2017 17:54

Tgt Ion	Resp	Lower	Upper
79	100		
52	57.5	77.8	116.6#
51	28.9	43.2	64.8#

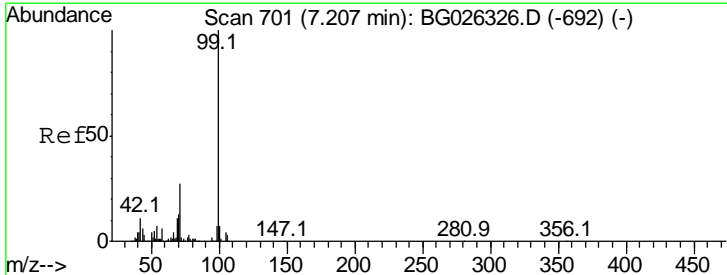
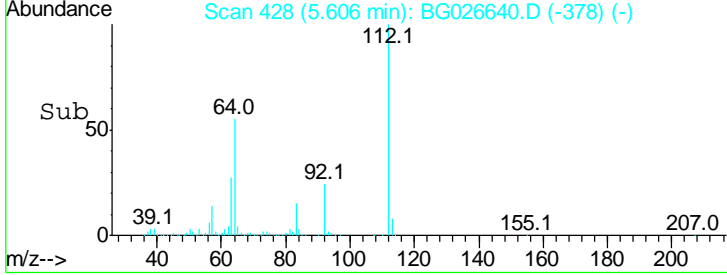
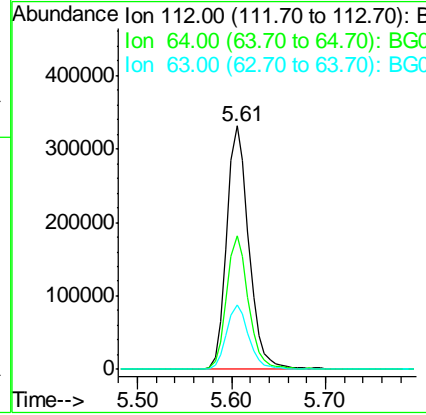
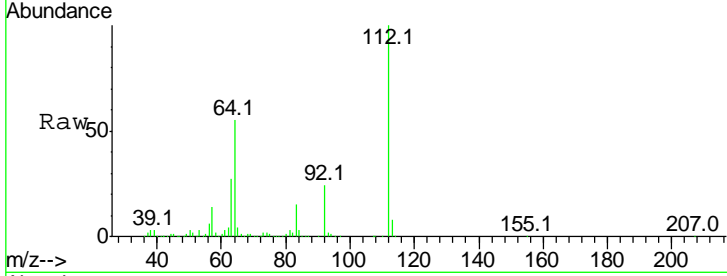




#5
 2-Fluorophenol
 Concen: 64.33 ng
 RT: 5.61 min Scan# 428
 Delta R.T. -0.01 min
 Lab File: BG026640.D
 Acq: 12 Apr 2017 17:54

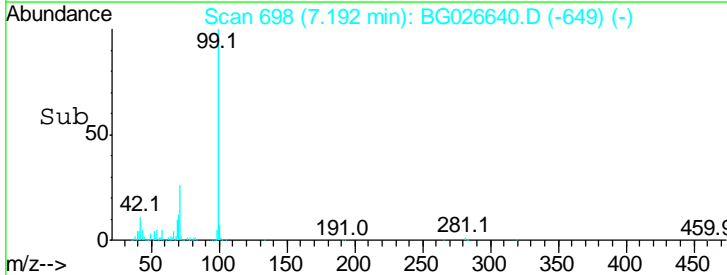
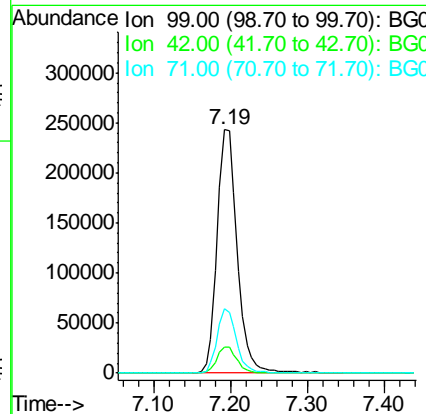
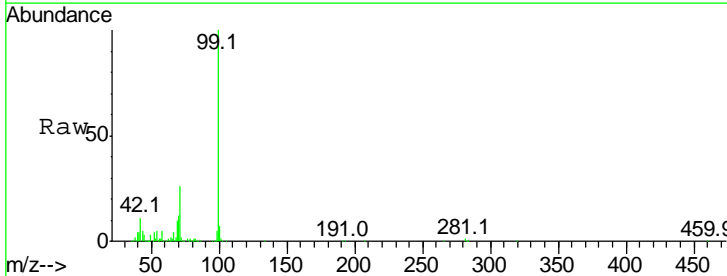
Instrument :
 BNA_G
 ClientSampled :

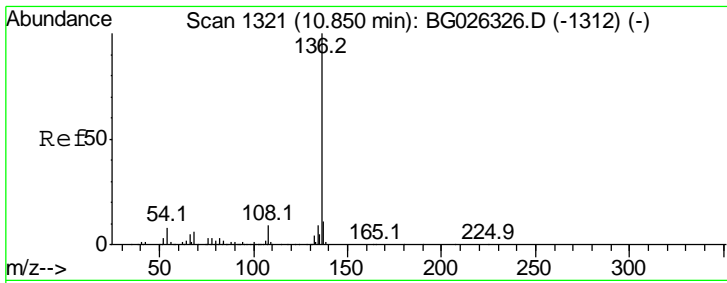
Tgt Ion	Resp	Lower	Upper
112	100		
64	54.6	61.8	92.6#
63	26.5	37.2	55.8#



#7
 Phenol-d6
 Concen: 38.43 ng
 RT: 7.19 min Scan# 698
 Delta R.T. -0.01 min
 Lab File: BG026640.D
 Acq: 12 Apr 2017 17:54

Tgt Ion	Resp	Lower	Upper
99	100		
42	10.9	20.5	30.7#
71	26.3	37.6	56.4#

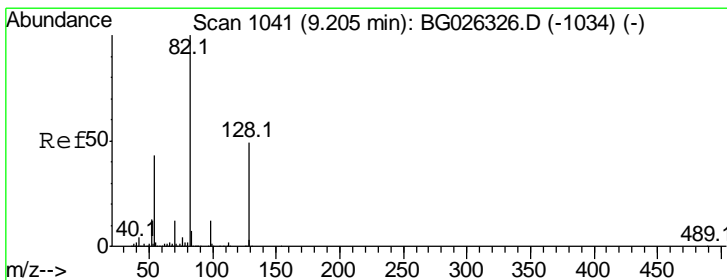
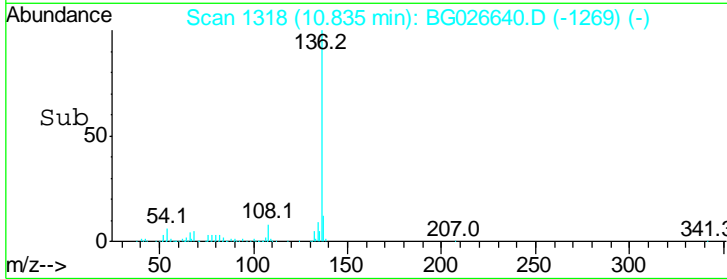
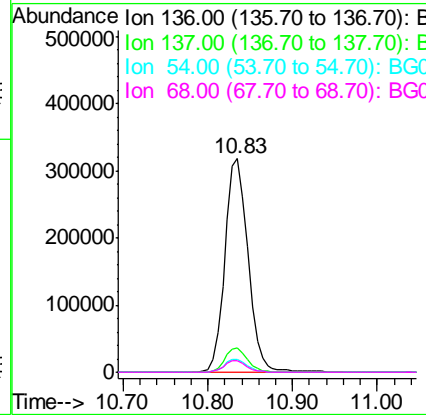
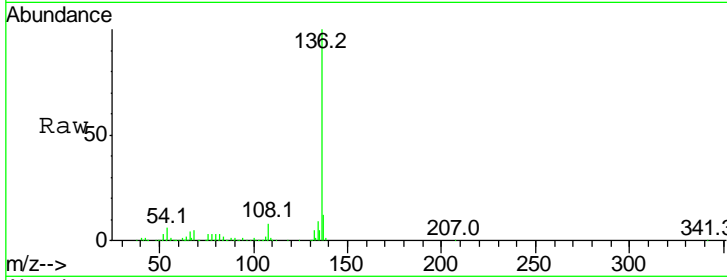




#21
 Naphthalene-d8
 Concen: 20.00 ng
 RT: 10.83 min Scan# 1318
 Delta R.T. -0.01 min
 Lab File: BG026640.D
 Acq: 12 Apr 2017 17:54

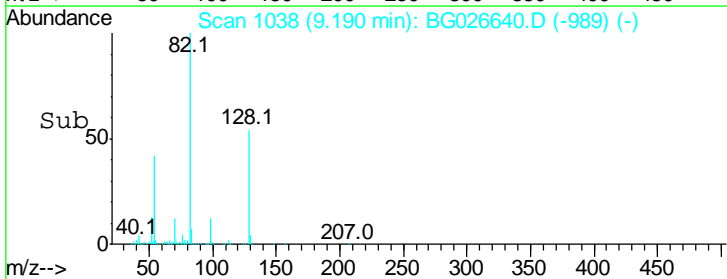
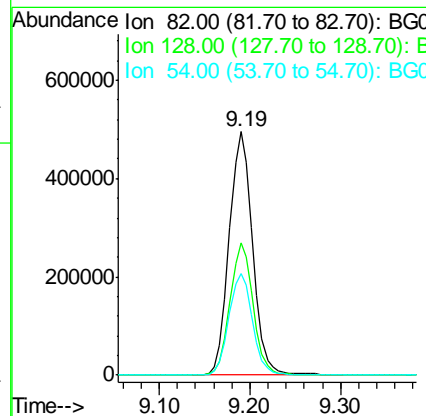
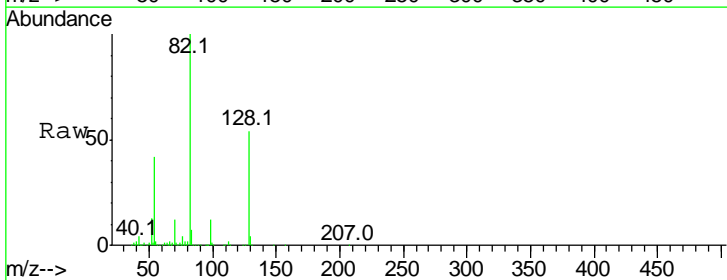
Instrument :
 BNA_G
 ClientSampled :

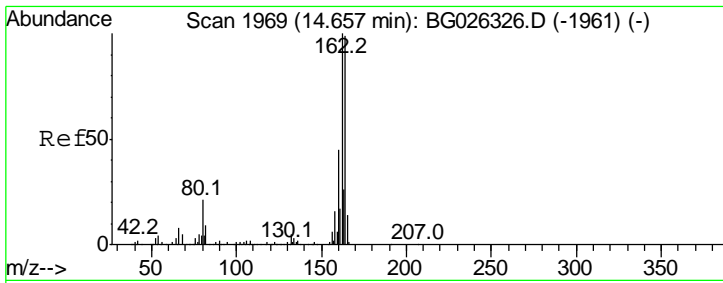
Tgt Ion	Resp	Lower	Upper
136	100		
137	11.6	8.9	13.3
54	6.0	9.3	13.9#
68	5.2	5.1	7.7



#23
 Nitrobenzene-d5
 Concen: 88.34 ng
 RT: 9.19 min Scan# 1038
 Delta R.T. -0.01 min
 Lab File: BG026640.D
 Acq: 12 Apr 2017 17:54

Tgt Ion	Resp	Lower	Upper
82	100		
128	54.4	26.4	39.6#
54	41.7	49.4	74.2#

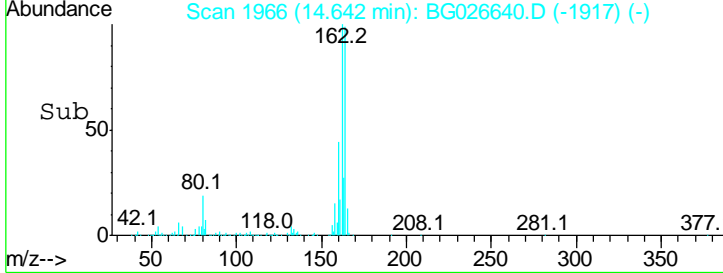
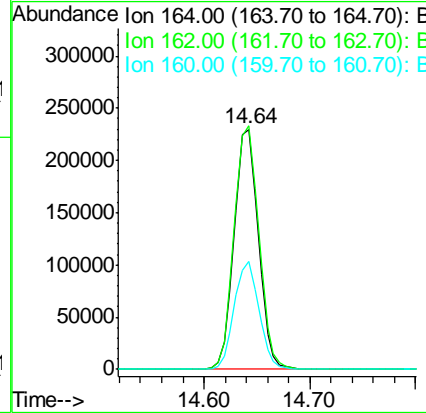
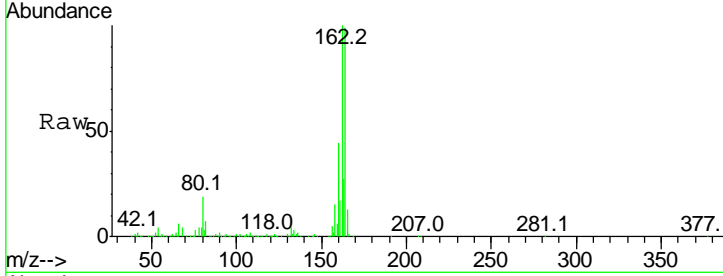




#38
 Acenaphthene-d10
 Concen: 20.00 ng
 RT: 14.64 min Scan# 1966
 Delta R.T. -0.01 min
 Lab File: BG026640.D
 Acq: 12 Apr 2017 17:54

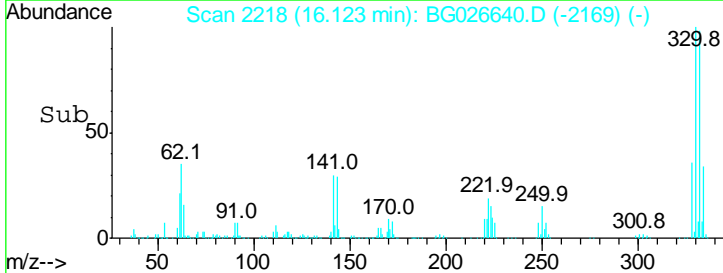
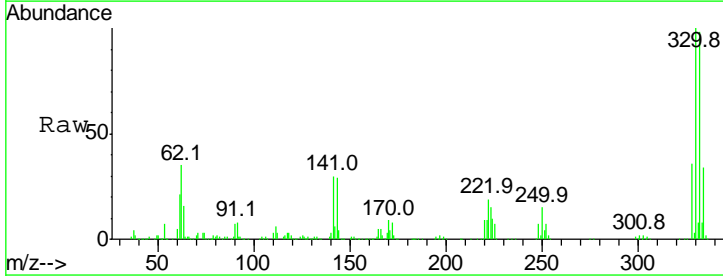
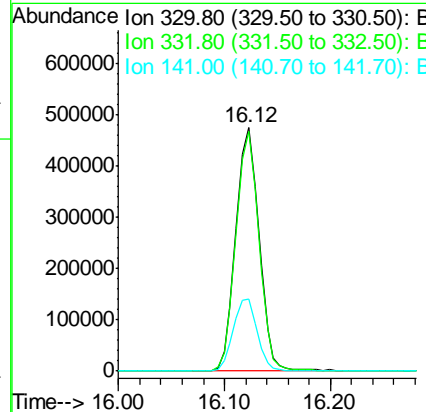
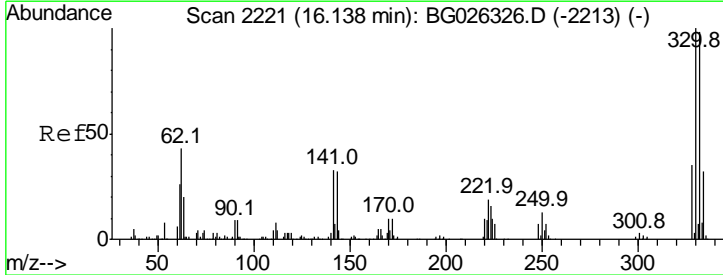
Instrument :
 BNA_G
 ClientSampled :

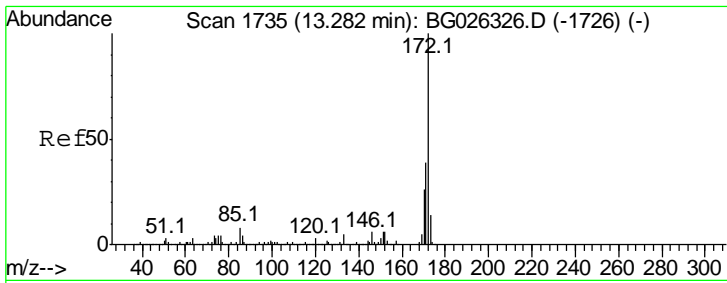
Tgt Ion	Resp	Lower	Upper
164	100		
162	101.4	85.1	127.7
160	44.9	34.7	52.1



#41
 2,4,6-Tribromophenol
 Concen: 174.39 ng
 RT: 16.12 min Scan# 2218
 Delta R.T. -0.01 min
 Lab File: BG026640.D
 Acq: 12 Apr 2017 17:54

Tgt Ion	Resp	Lower	Upper
330	100		
332	97.2	77.3	115.9
141	30.6	32.1	48.1#

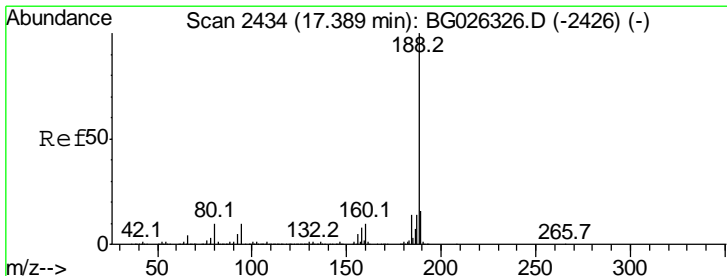
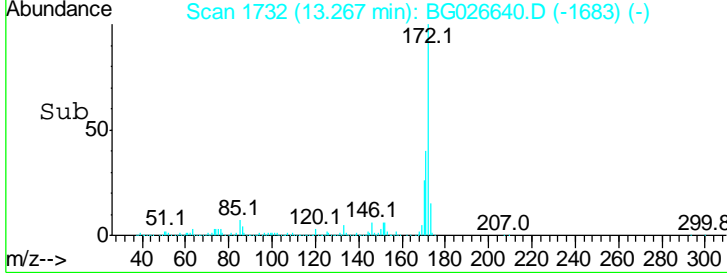
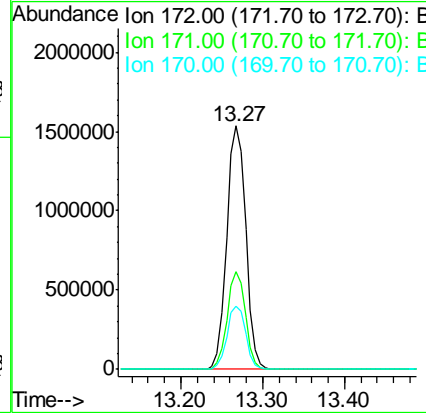
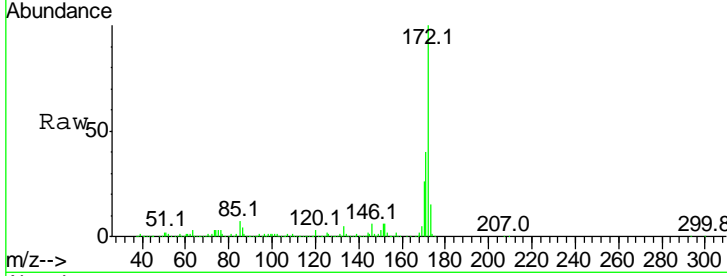




#44
 2-Fluorobiphenyl
 Concen: 96.10 ng
 RT: 13.27 min Scan# 1732
 Delta R.T. -0.01 min
 Lab File: BG026640.D
 Acq: 12 Apr 2017 17:54

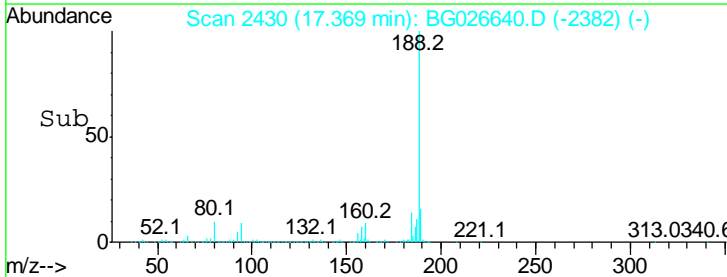
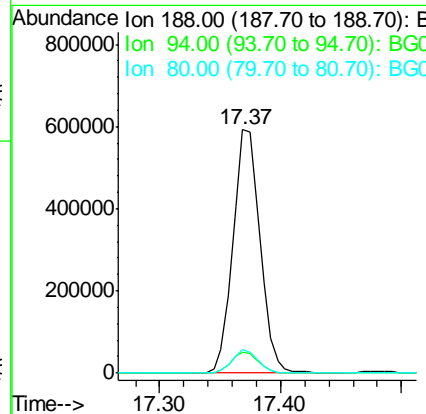
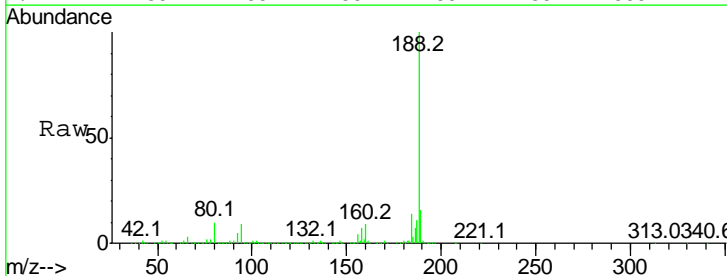
Instrument :
 BNA_G
 ClientSampled :

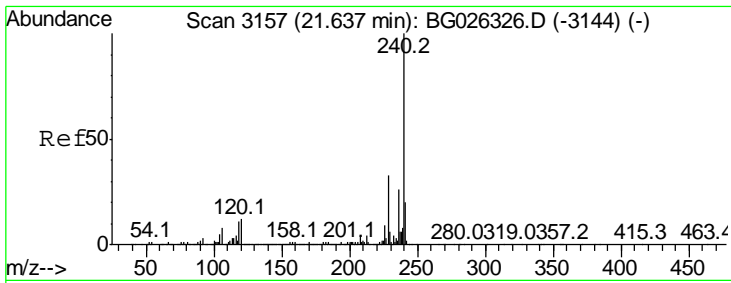
Tgt Ion	Resp	Lower	Upper
172	100		
171	40.3	32.2	48.2
170	26.1	21.8	32.6



#63
 Phenanthrene-d10
 Concen: 20.00 ng
 RT: 17.37 min Scan# 2430
 Delta R.T. -0.02 min
 Lab File: BG026640.D
 Acq: 12 Apr 2017 17:54

Tgt Ion	Resp	Lower	Upper
188	100		
94	8.8	5.8	8.8
80	9.6	7.5	11.3



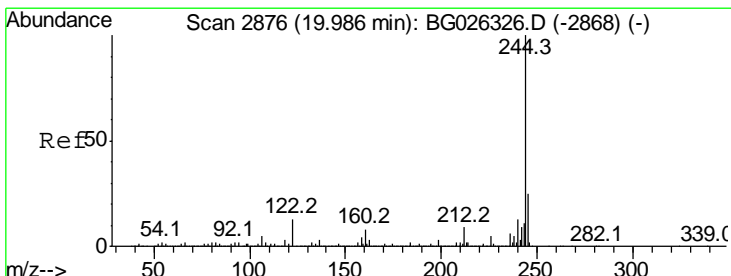
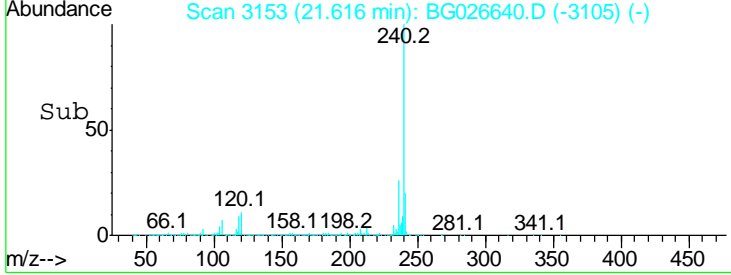
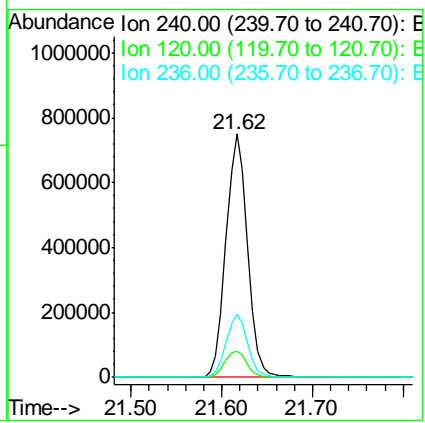
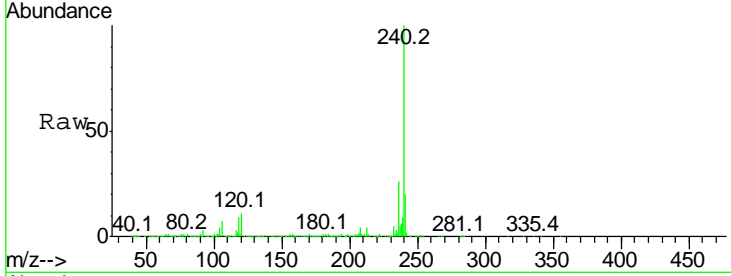


#75
 Chrysene-d12
 Concen: 20.00 ng
 RT: 21.62 min Scan# 3153
 Delta R.T. -0.02 min
 Lab File: BG026640.D
 Acq: 12 Apr 2017 17:54

Instrument :
 BNA_G
 ClientSampled :

Tgt Ion: 240 Resp: 1236752

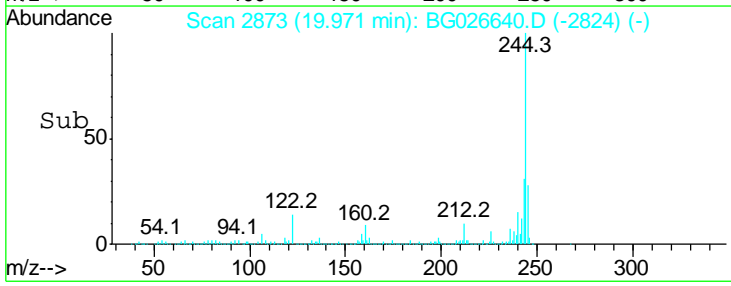
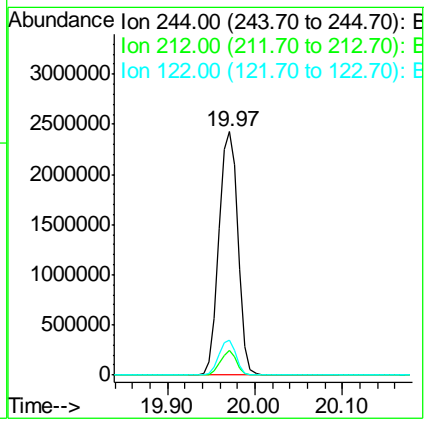
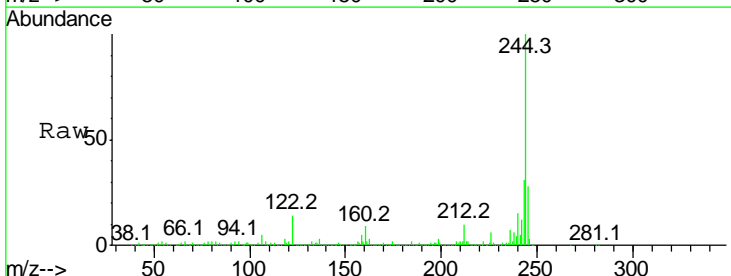
Ion	Ratio	Lower	Upper
240	100		
120	10.6	5.7	8.5#
236	25.8	22.2	33.4

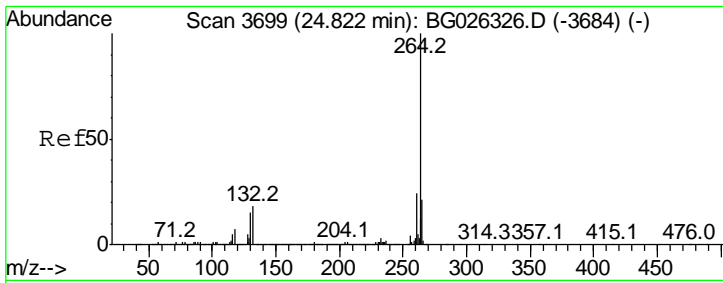


#78
 Terphenyl-d14
 Concen: 72.21 ng
 RT: 19.97 min Scan# 2873
 Delta R.T. -0.01 min
 Lab File: BG026640.D
 Acq: 12 Apr 2017 17:54

Tgt Ion: 244 Resp: 3677368

Ion	Ratio	Lower	Upper
244	100		
212	10.0	10.0	15.0
122	14.5	8.6	12.8#





#86
 Perylene-d12
 Concen: 20.00 ng
 RT: 24.79 min Scan# 3693
 Delta R.T. -0.03 min
 Lab File: BG026640.D
 Acq: 12 Apr 2017 17:54

Instrument :
 BNA_G
 ClientSampled :

Tot Ion: 264 Resp: 1153533

Ion	Ratio	Lower	Upper
264	100		
260	23.2	21.8	32.8
265	22.0	18.2	27.4

