

Data Path : Z:\svoasrv\HPCHEM1\BNA\_G\Data\BG041222\  
 Data File : BG053129.D  
 Acq On : 12 Apr 2022 21:12  
 Operator : CG/JU  
 Sample : N2349-01RE  
 Misc :  
 ALS Vial : 18 Sample Multiplier: 1

Instrument :  
 BNA\_G  
 ClientSampleId :  
 DEL-1RE

Quant Time: Apr 13 06:14:30 2022  
 Quant Method : Z:\svoasrv\HPCHEM1\BNA\_G\Methods\8270-BG040822.M  
 Quant Title : ASP BNA STANDARDS FOR 5 POINT CALIBRATION  
 QLast Update : Fri Apr 08 15:31:24 2022  
 Response via : Initial Calibration

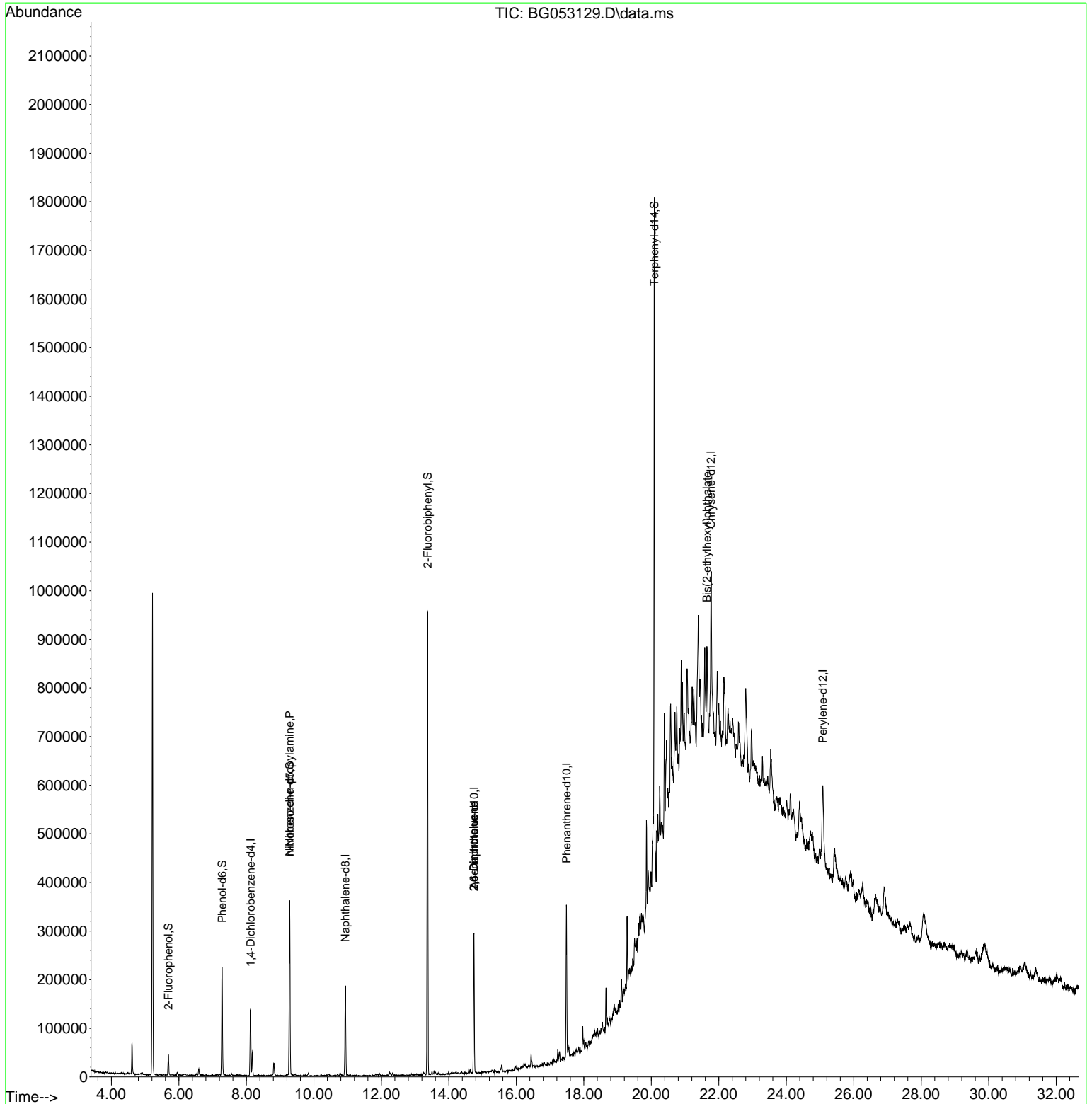
Compound	R.T.	QIon	Response	Conc	Units	Dev(Min)
Internal Standards						
1) 1,4-Dichlorobenzene-d4	8.125	152	37081	20.000	ng	0.00
21) Naphthalene-d8	10.933	136	151598	20.000	ng	# 0.00
39) Acenaphthene-d10	14.745	164	105426	20.000	ng	0.00
64) Phenanthrene-d10	17.488	188	203585	20.000	ng	0.00
76) Chrysene-d12	21.771	240	181370	20.000	ng	0.00
86) Perylene-d12	25.078	264	155135	20.000	ng	0.00
System Monitoring Compounds						
5) 2-Fluorophenol	5.687	112	18022	8.331	ng	0.00
7) Phenol-d6	7.279	99	126085	37.797	ng	0.00
23) Nitrobenzene-d5	9.282	82	229527	61.476	ng	0.00
42) 2,4,6-Tribromophenol	16.225	330	1770	1.055	ng	0.00
45) 2-Fluorobiphenyl	13.370	172	517570	67.695	ng	0.00
79) Terphenyl-d14	20.091	244	679665	63.290	ng	0.00
Target Compounds						
19) n-Nitroso-di-n-propyla...	9.282	70	32780	13.422	ng	# 76
51) 2,6-Dinitrotoluene	14.739	165	13534	7.693	ng	# 25
57) 2,4-Dinitrotoluene	14.739	165	13534	5.404	ng	# 24
84) Bis(2-ethylhexyl)phtha...	21.648	149	47214	7.253	ng	99

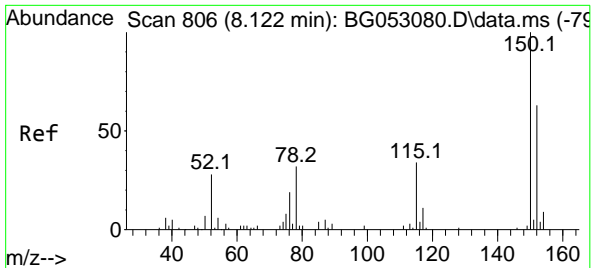
(#) = qualifier out of range (m) = manual integration (+) = signals summed

Data Path : Z:\svoasrv\HPCHEM1\BNA\_G\Data\BG041222\  
 Data File : BG053129.D  
 Acq On : 12 Apr 2022 21:12  
 Operator : CG/JU  
 Sample : N2349-01RE  
 Misc :  
 ALS Vial : 18 Sample Multiplier: 1

Instrument :  
 BNA\_G  
 ClientSampleId :  
 DEL-1RE

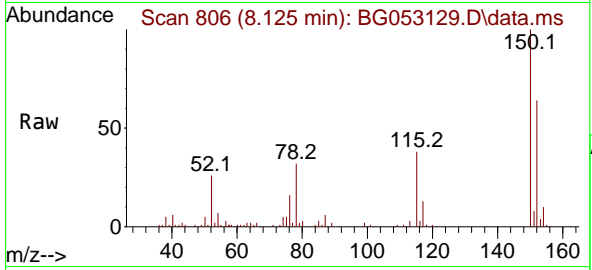
Quant Time: Apr 13 06:14:30 2022  
 Quant Method : Z:\svoasrv\HPCHEM1\BNA\_G\Methods\8270-BG040822.M  
 Quant Title : ASP BNA STANDARDS FOR 5 POINT CALIBRATION  
 QLast Update : Fri Apr 08 15:31:24 2022  
 Response via : Initial Calibration



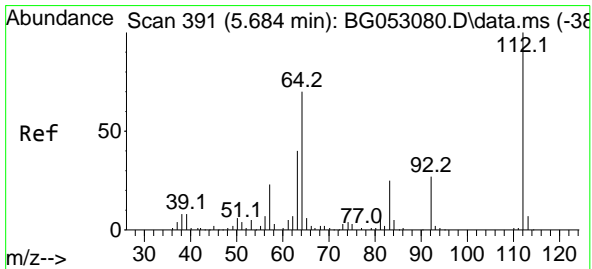
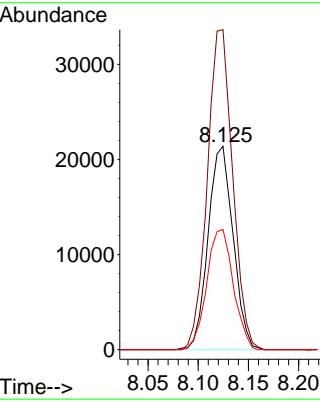
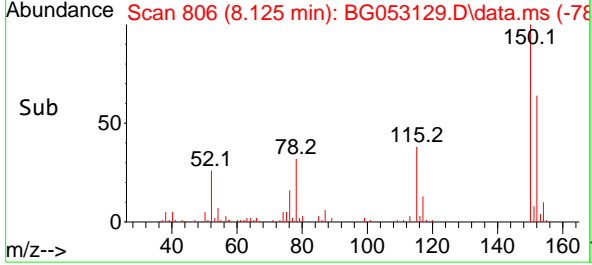


#1  
 1,4-Dichlorobenzene-d4  
 Concen: 20.000 ng  
 RT: 8.125 min Scan# 80  
 Delta R.T. 0.003 min  
 Lab File: BG053129.D  
 Acq: 12 Apr 2022 21:12

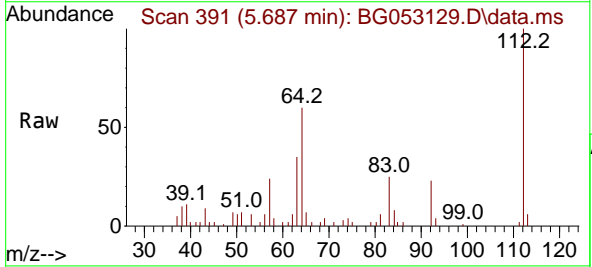
Instrument : BNA\_G  
 ClientSampleId : DEL-1RE



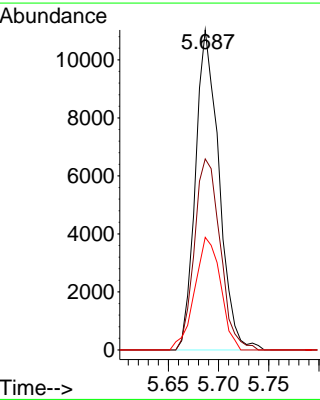
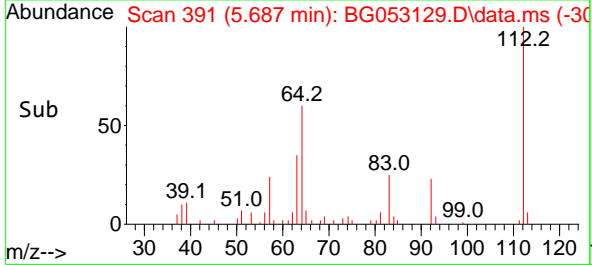
Tgt Ion:152 Resp: 37081  
 Ion Ratio Lower Upper  
 152 100  
 150 157.4 114.6 172.0  
 115 59.1 45.9 68.9

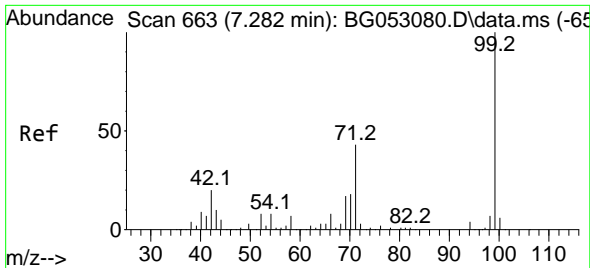


#5  
 2-Fluorophenol  
 Concen: 8.331 ng  
 RT: 5.687 min Scan# 391  
 Delta R.T. 0.003 min  
 Lab File: BG053129.D  
 Acq: 12 Apr 2022 21:12



Tgt Ion:112 Resp: 18022  
 Ion Ratio Lower Upper  
 112 100  
 64 59.7 48.0 72.0  
 63 35.2 26.5 39.7



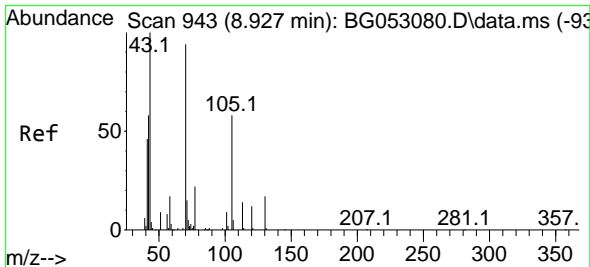
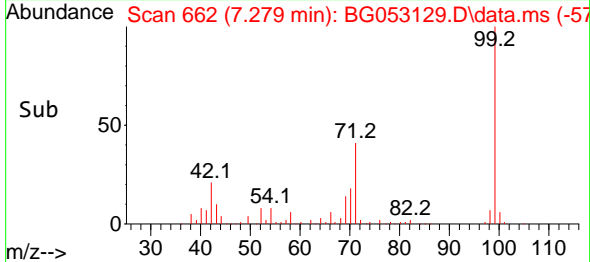
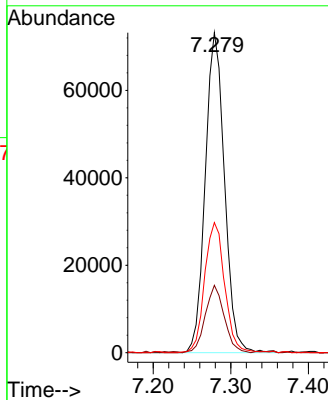
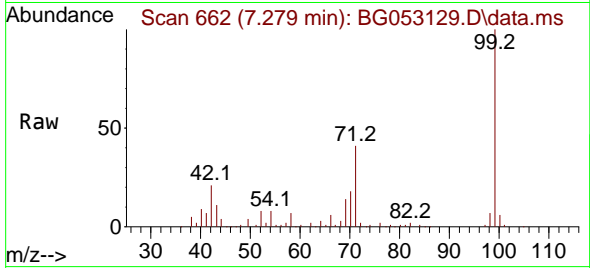


#7  
 Phenol-d6  
 Concen: 37.797 ng  
 RT: 7.279 min Scan# 60  
 Delta R.T. -0.003 min  
 Lab File: BG053129.D  
 Acq: 12 Apr 2022 21:12

Instrument :  
 BNA\_G  
 ClientSampleId :  
 DEL-1RE

Tgt Ion: 99 Resp: 126085

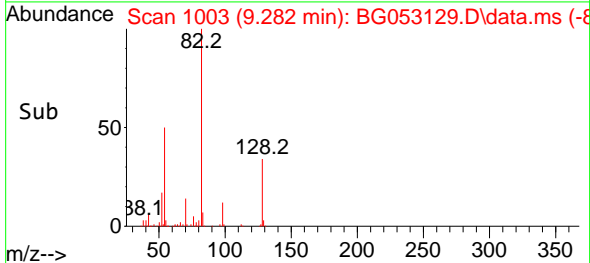
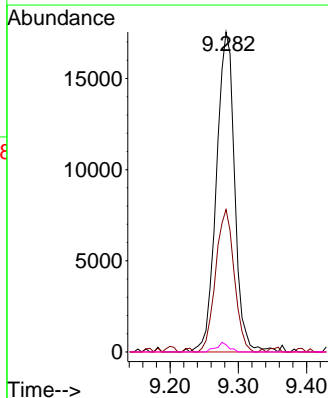
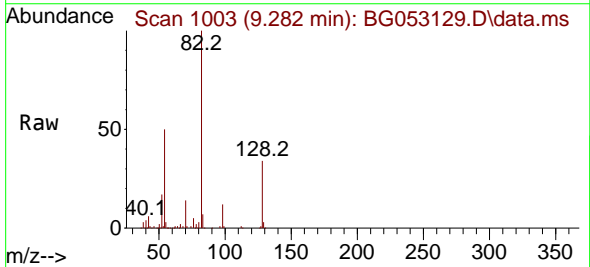
Ion	Ratio	Lower	Upper
99	100		
42	21.1	14.7	22.1
71	40.6	29.2	43.8

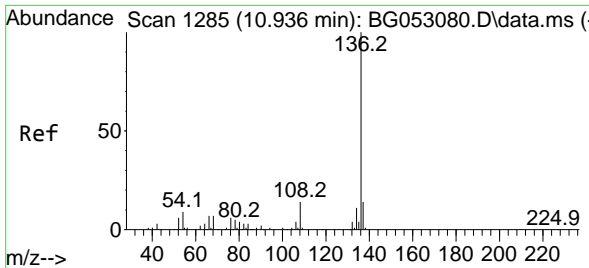


#19  
 n-Nitroso-di-n-propylamine  
 Concen: 13.422 ng  
 RT: 9.282 min Scan# 1003  
 Delta R.T. 0.355 min  
 Lab File: BG053129.D  
 Acq: 12 Apr 2022 21:12

Tgt Ion: 70 Resp: 32780

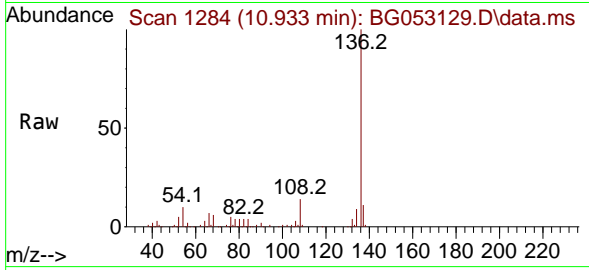
Ion	Ratio	Lower	Upper
70	100		
42	44.5	46.0	69.0#
101	0.0	6.2	9.4#
130	2.3	17.0	25.4#



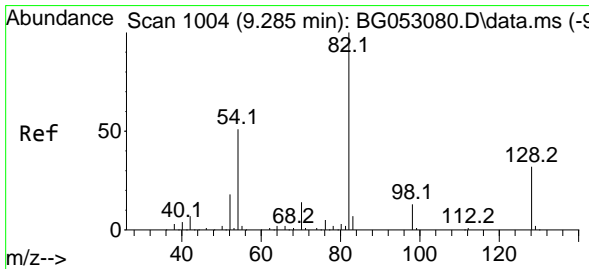
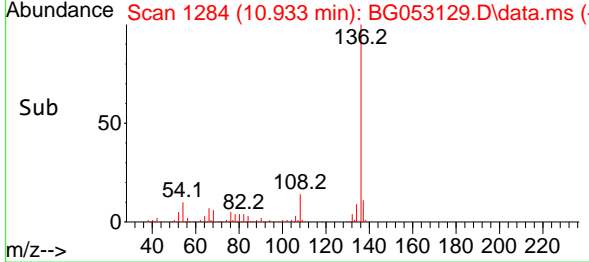
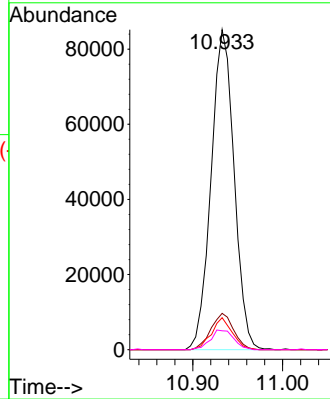


#21  
 Naphthalene-d8  
 Concen: 20.000 ng  
 RT: 10.933 min Scan# 11  
 Delta R.T. -0.003 min  
 Lab File: BG053129.D  
 Acq: 12 Apr 2022 21:12

Instrument :  
 BNA\_G  
 ClientSampleId :  
 DEL-1RE

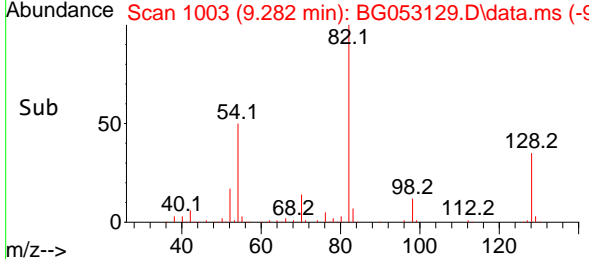
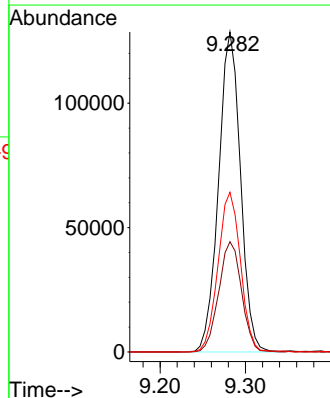
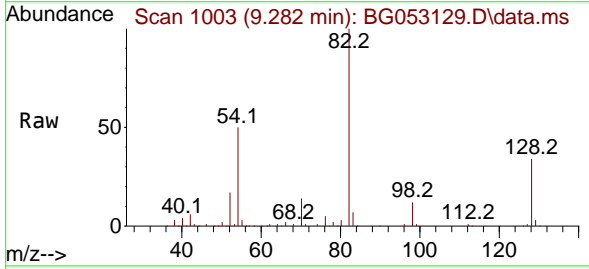


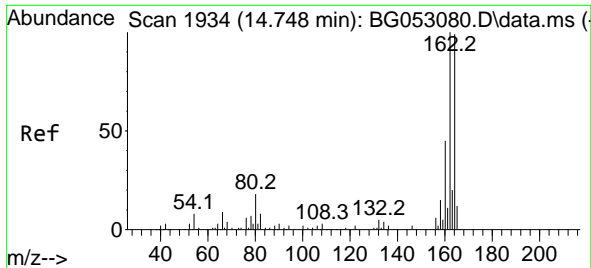
Tgt Ion:136 Resp: 151598  
 Ion Ratio Lower Upper  
 136 100  
 137 11.4 9.4 14.2  
 54 10.0 6.4 9.6#  
 68 5.9 5.0 7.6



#23  
 Nitrobenzene-d5  
 Concen: 61.476 ng  
 RT: 9.282 min Scan# 1003  
 Delta R.T. -0.003 min  
 Lab File: BG053129.D  
 Acq: 12 Apr 2022 21:12

Tgt Ion: 82 Resp: 229527  
 Ion Ratio Lower Upper  
 82 100  
 128 34.4 31.3 46.9  
 54 49.9 37.8 56.8

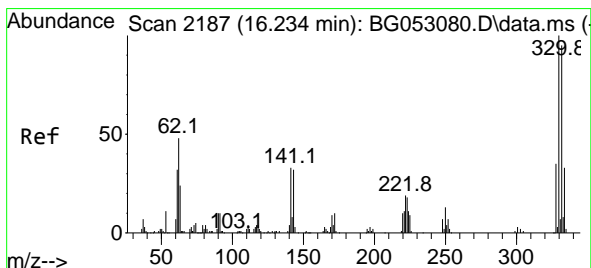
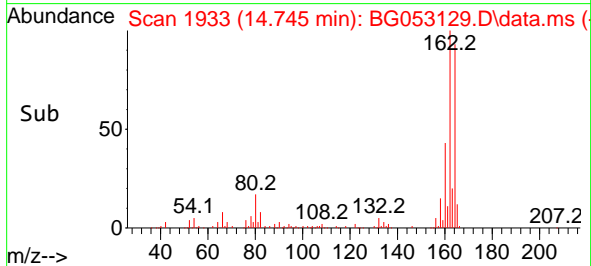
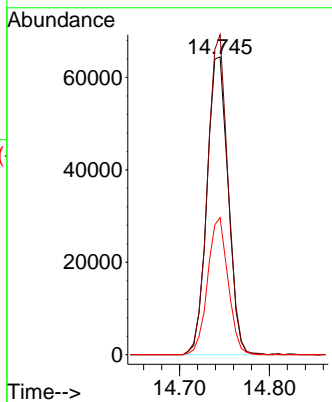
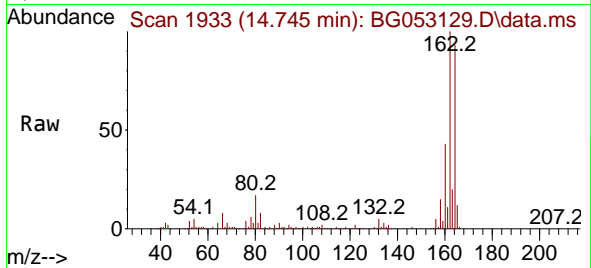




#39  
 Acenaphthene-d10  
 Concen: 20.000 ng  
 RT: 14.745 min Scan# 1933  
 Delta R.T. -0.003 min  
 Lab File: BG053129.D  
 Acq: 12 Apr 2022 21:12

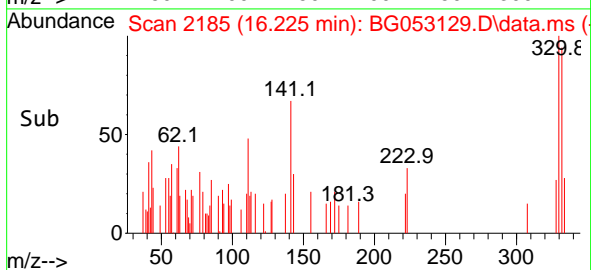
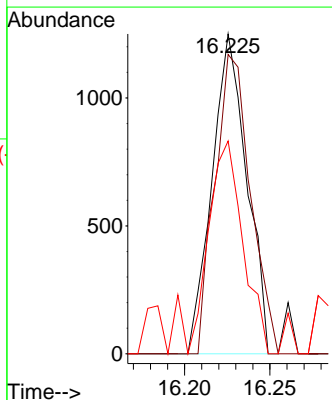
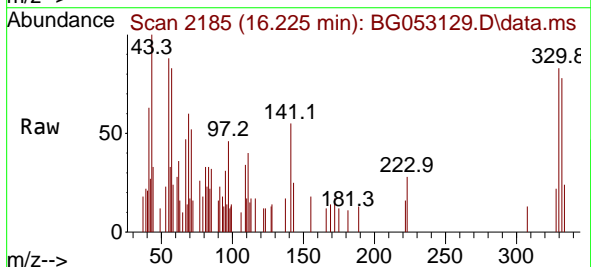
Instrument :  
 BNA\_G  
 ClientSampleId :  
 DEL-1RE

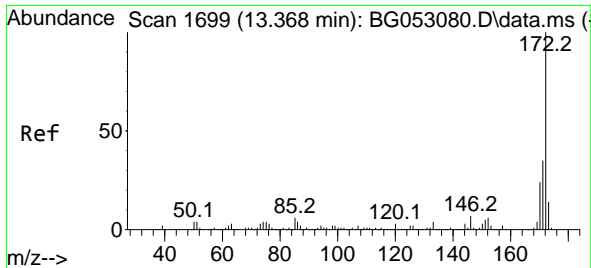
Tgt Ion:164 Resp: 105426  
 Ion Ratio Lower Upper  
 164 100  
 162 107.4 80.0 120.0  
 160 46.0 38.8 58.2



#42  
 2,4,6-Tribromophenol  
 Concen: 1.055 ng  
 RT: 16.225 min Scan# 2185  
 Delta R.T. -0.009 min  
 Lab File: BG053129.D  
 Acq: 12 Apr 2022 21:12

Tgt Ion:330 Resp: 1770  
 Ion Ratio Lower Upper  
 330 100  
 332 96.4 75.8 113.6  
 141 70.0 24.6 36.8#

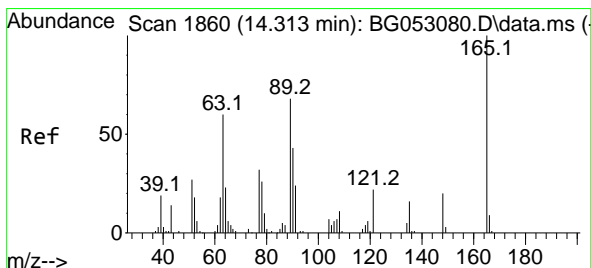
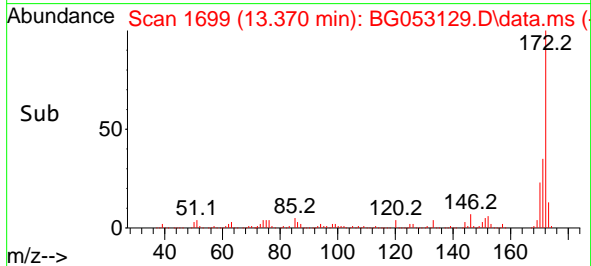
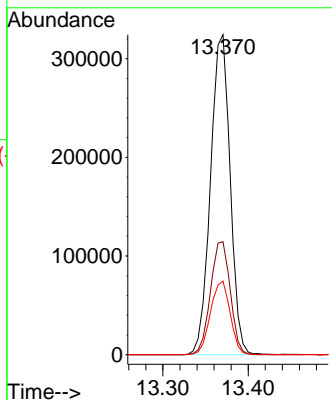
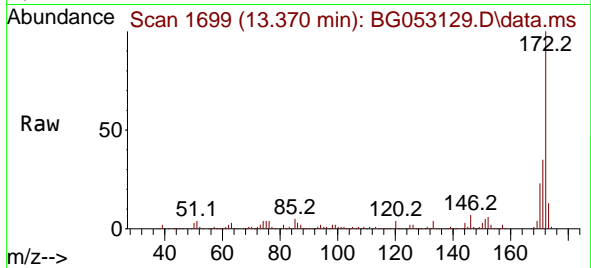




#45  
 2-Fluorobiphenyl  
 Concen: 67.695 ng  
 RT: 13.370 min Scan# 11  
 Delta R.T. 0.003 min  
 Lab File: BG053129.D  
 Acq: 12 Apr 2022 21:12

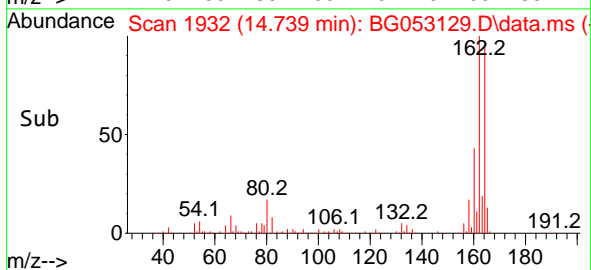
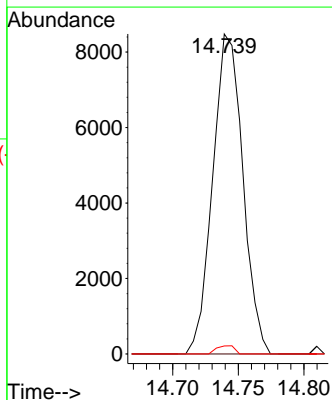
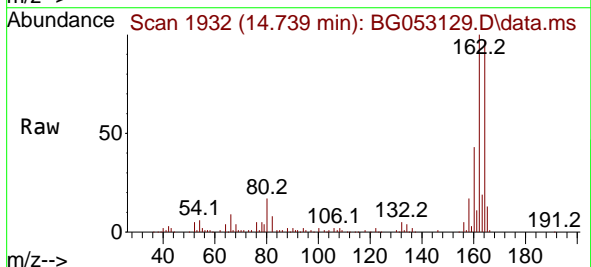
Instrument :  
 BNA\_G  
 ClientSampleId :  
 DEL-1RE

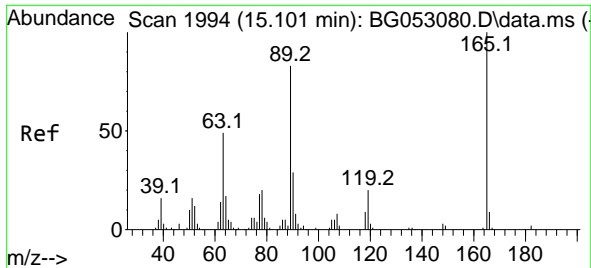
Tgt Ion:172 Resp: 517570  
 Ion Ratio Lower Upper  
 172 100  
 171 35.3 28.3 42.5  
 170 23.0 18.0 27.0



#51  
 2,6-Dinitrotoluene  
 Concen: 7.693 ng  
 RT: 14.739 min Scan# 1932  
 Delta R.T. 0.426 min  
 Lab File: BG053129.D  
 Acq: 12 Apr 2022 21:12

Tgt Ion:165 Resp: 13534  
 Ion Ratio Lower Upper  
 165 100  
 63 0.0 43.7 65.5#  
 89 2.5 45.0 67.4#

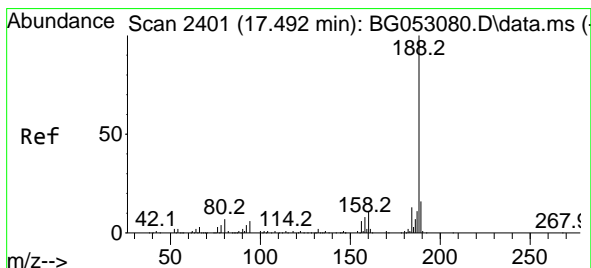
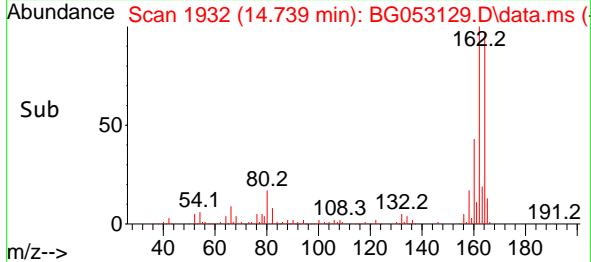
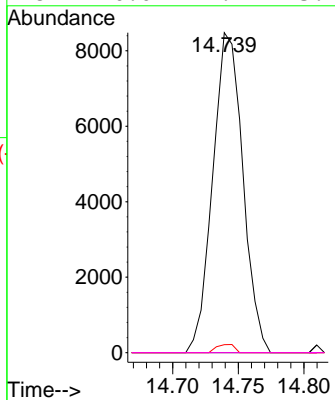
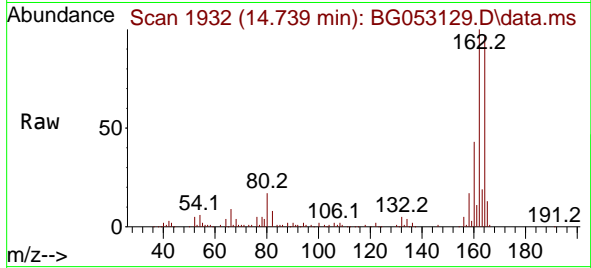




#57  
 2,4-Dinitrotoluene  
 Concen: 5.404 ng  
 RT: 14.739 min Scan# 1932  
 Delta R.T. -0.361 min  
 Lab File: BG053129.D  
 Acq: 12 Apr 2022 21:12

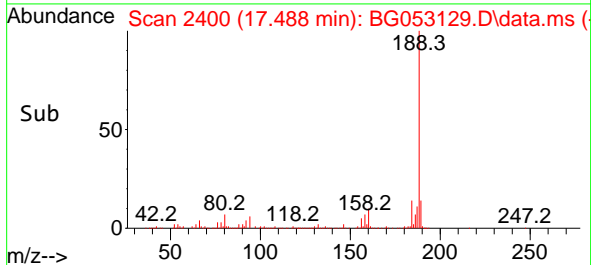
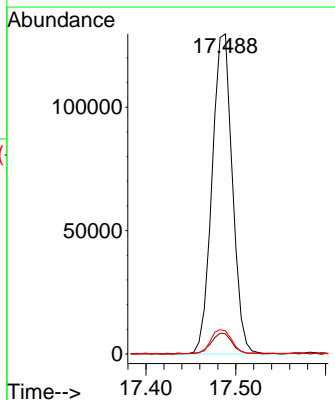
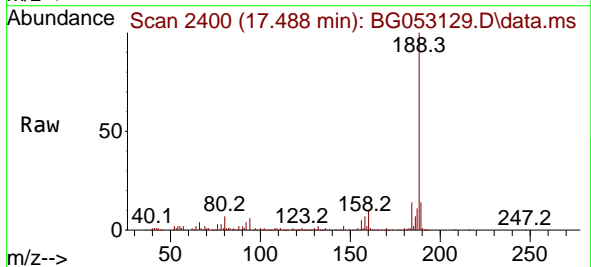
Instrument : BNA\_G  
 ClientSampleId : DEL-1RE

Tgt Ion	Resp	Lower	Upper
165	13534		
63	0.0	34.8	52.2#
89	2.5	57.4	86.0#
182	0.0	2.1	3.1#

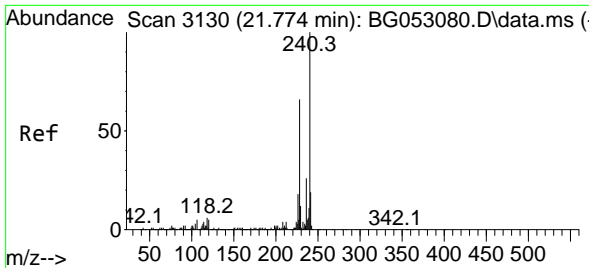


#64  
 Phenanthrene-d10  
 Concen: 20.000 ng  
 RT: 17.488 min Scan# 2400  
 Delta R.T. -0.003 min  
 Lab File: BG053129.D  
 Acq: 12 Apr 2022 21:12

Tgt Ion	Resp	Lower	Upper
188	203585		
94	6.3	5.7	8.5
80	7.2	7.2	10.8





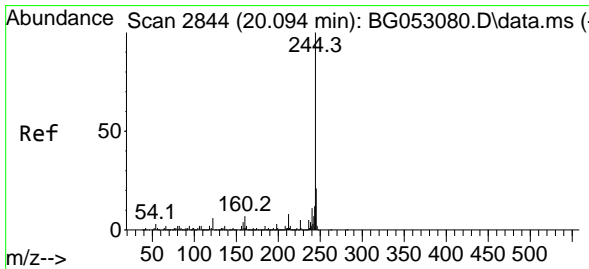
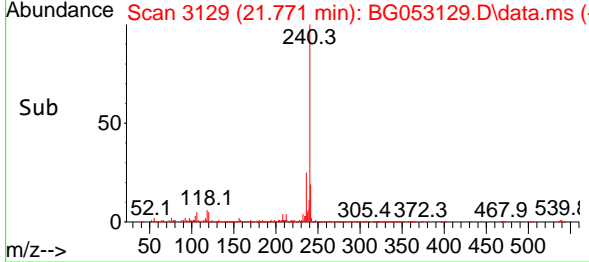
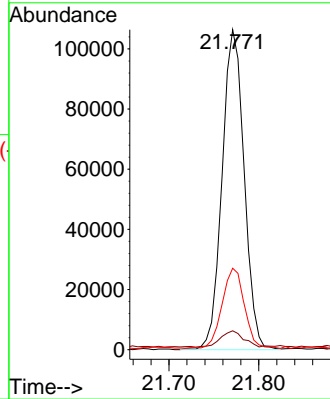
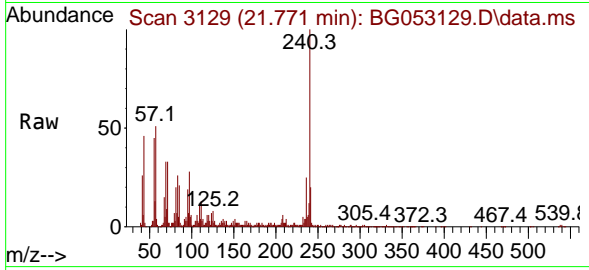


#76  
 Chrysene-d12  
 Concen: 20.000 ng  
 RT: 21.771 min Scan# 31  
 Delta R.T. -0.003 min  
 Lab File: BG053129.D  
 Acq: 12 Apr 2022 21:12

Instrument :  
 BNA\_G  
 ClientSampleId :  
 DEL-1RE

Tgt Ion:240 Resp: 181370

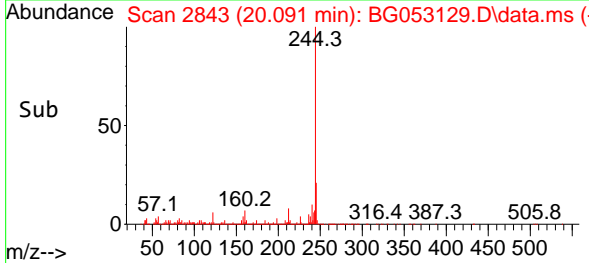
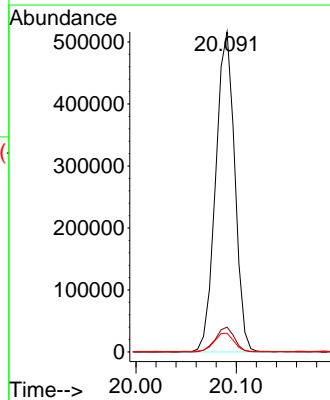
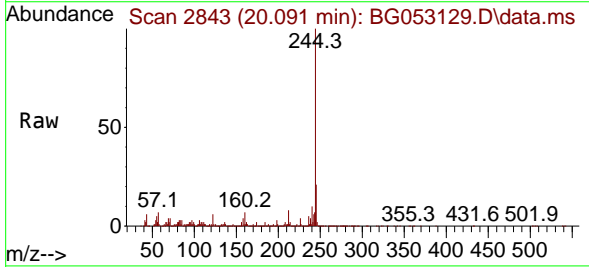
Ion	Ratio	Lower	Upper
240	100		
120	5.9	5.4	8.0
236	25.5	19.8	29.6

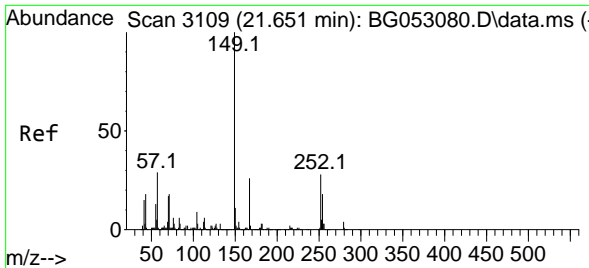


#79  
 Terphenyl-d14  
 Concen: 63.290 ng  
 RT: 20.091 min Scan# 2843  
 Delta R.T. -0.003 min  
 Lab File: BG053129.D  
 Acq: 12 Apr 2022 21:12

Tgt Ion:244 Resp: 679665

Ion	Ratio	Lower	Upper
244	100		
212	7.7	5.4	8.2
122	5.9	5.8	8.6



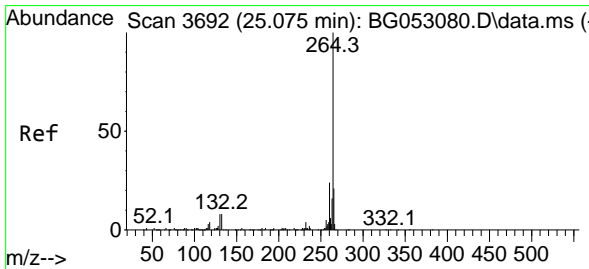
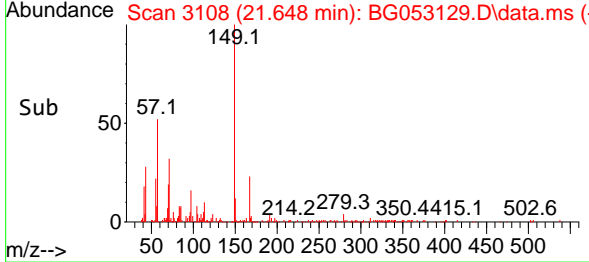
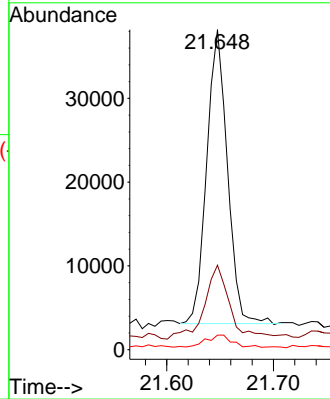
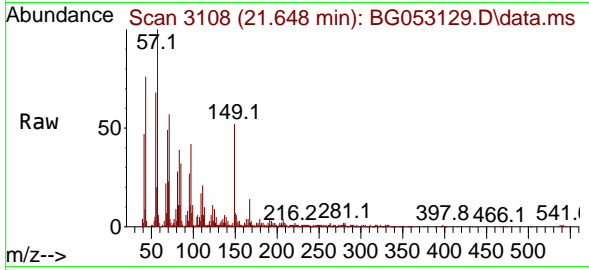


#84  
 Bis(2-ethylhexyl)phthalate  
 Concen: 7.253 ng  
 RT: 21.648 min Scan# 3108  
 Delta R.T. -0.003 min  
 Lab File: BG053129.D  
 Acq: 12 Apr 2022 21:12

Instrument :  
 BNA\_G  
 ClientSampleId :  
 DEL-1RE

Tgt Ion:149 Resp: 47214

Ion	Ratio	Lower	Upper
149	100		
167	26.4	21.4	32.2
279	4.6	3.8	5.8



#86  
 Perylene-d12  
 Concen: 20.000 ng  
 RT: 25.078 min Scan# 3692  
 Delta R.T. 0.003 min  
 Lab File: BG053129.D  
 Acq: 12 Apr 2022 21:12

Tgt Ion:264 Resp: 155135

Ion	Ratio	Lower	Upper
264	100		
260	25.6	18.2	27.2
265	21.4	15.1	22.7

