

Data Path : Z:\HPCHEM1\BNA\_G\DATA\BG041315\  
 Data File : BG016386.D  
 Acq On : 14 Apr 2015 7:46  
 Operator : TP/IZ  
 Sample : G1831-01  
 Misc :  
 ALS Vial : 26 Sample Multiplier: 1

Instrument :  
 BNA\_G  
 ClientSampleId :

Integration Parameters: rteint.p  
 Integrator: RTE  
 Smoothing : ON  
 Sampling : 1  
 Start Thrs: 0.2  
 Stop Thrs : 0

Filtering: 5  
 Min Area: 3 % of largest Peak  
 Max Peaks: 100  
 Peak Location: TOP

If leading or trailing edge < 100 prefer < Baseline drop else tangent >  
 Peak separation: 5

Method : Z:\HPCHEM1\BNA\_G\METHODS\8270-BG040615.M  
 Title : ASP BNA STANDARDS FOR 5 POINT CALIBRATION

Signal : TIC

peak #	R.T. min	first scan	max scan	last scan	PK TY	peak height	corr. area	corr. % max.	% of total
1	2.772	8	14	19	rBV	121160	246905	7.71%	0.870%
2	2.854	24	28	34	rVB	138045	196522	6.13%	0.692%
3	4.787	351	357	367	rVB	159477	233589	7.29%	0.823%
4	5.263	431	438	449	rBV	1207414	1665582	51.99%	5.868%
5	6.861	702	710	727	rBV	1193633	1908716	59.57%	6.724%
6	7.208	762	769	781	rBV	1203311	1873837	58.49%	6.601%
7	7.672	842	848	857	rBV	365952	571071	17.82%	2.012%
8	7.995	895	903	911	rBV	873243	1378157	43.02%	4.855%
9	8.829	1037	1045	1055	rBV	700381	1121515	35.00%	3.951%
10	10.463	1314	1323	1329	rBV	517991	868137	27.10%	3.058%
11	11.779	1540	1547	1556	rVB	32677	54934	1.71%	0.194%
12	12.936	1737	1744	1753	rBV	1714990	2449938	76.47%	8.631%
13	13.776	1882	1887	1892	rBV	84855	114472	3.57%	0.403%
14	14.317	1972	1979	1986	rBV2	764819	1143991	35.71%	4.030%
15	15.674	2202	2210	2216	rBV	130827	186015	5.81%	0.655%
16	15.803	2226	2232	2245	rBV	1070276	1492429	46.58%	5.258%
17	17.055	2439	2445	2450	rBV2	925043	1346860	42.04%	4.745%
18	17.096	2450	2452	2458	rVB	136573	163422	5.10%	0.576%
19	17.184	2464	2467	2473	rVB	27687	41686	1.30%	0.147%
20	17.954	2588	2598	2608	rBV2	75492	167824	5.24%	0.591%
21	18.124	2622	2627	2631	rBV4	19170	33531	1.05%	0.118%
22	19.117	2788	2796	2802	rBV	259635	357102	11.15%	1.258%
23	19.241	2809	2817	2825	rBV6	23745	52384	1.64%	0.185%
24	19.387	2834	2842	2847	rVB	359166	427820	13.35%	1.507%
25	19.476	2848	2857	2860	rBV	222157	384068	11.99%	1.353%
26	19.499	2860	2861	2867	rVB	136394	126453	3.95%	0.445%
27	19.687	2884	2893	2903	rBV	2584371	3203895	100.00%	11.287%
28	19.805	2908	2913	2919	rVV7	14158	33523	1.05%	0.118%
29	19.998	2943	2946	2950	rVB	40621	44128	1.38%	0.155%
30	20.375	3004	3010	3014	rBV3	29241	47880	1.49%	0.169%
31	20.427	3015	3019	3025	rVV	301611	334976	10.46%	1.180%
32	20.492	3025	3030	3033	rVV	99931	120668	3.77%	0.425%
33	20.527	3033	3036	3040	rVB	68619	68380	2.13%	0.241%
34	20.721	3065	3069	3076	rVB	23413	33899	1.06%	0.119%

Data Path : Z:\HPCHEM1\BNA\_G\DATA\BG041315\  
 Data File : BG016386.D  
 Acq On : 14 Apr 2015 7:46  
 Operator : TP/IZ  
 Sample : G1831-01  
 Misc :  
 ALS Vial : 26 Sample Multiplier: 1

Instrument :  
 BNA\_G  
 ClientSampleId :

Integration Parameters: rteint.p  
 Integrator: RTE  
 Smoothing : ON Filtering: 5  
 Sampling : 1 Min Area: 3 % of largest Peak  
 Start Thrs: 0.2 Max Peaks: 100  
 Stop Thrs : 0 Peak Location: TOP

If leading or trailing edge < 100 prefer < Baseline drop else tangent >  
 Peak separation: 5

Method : Z:\HPCHEM1\BNA\_G\METHODS\8270-BG040615.M  
 Title : ASP BNA STANDARDS FOR 5 POINT CALIBRATION

35	20.886	3090	3097	3100	rBV4	28949	61137	1.91%	0.215%
36	20.950	3104	3108	3116	rVV	514797	704410	21.99%	2.482%
37	21.009	3116	3118	3127	rVB2	36642	82886	2.59%	0.292%
38	21.232	3150	3156	3161	rBV	1150142	1653882	51.62%	5.827%
39	21.273	3161	3163	3171	rVB	118962	137555	4.29%	0.485%
40	21.385	3178	3182	3187	rBV	171626	181936	5.68%	0.641%
41	21.550	3205	3210	3215	rBV4	17292	33826	1.06%	0.119%
42	21.814	3251	3255	3266	rVB	119411	186845	5.83%	0.658%
43	22.078	3296	3300	3309	rVB	13289	35999	1.12%	0.127%
44	22.272	3329	3333	3338	rVB	119248	148236	4.63%	0.522%
45	22.789	3415	3421	3427	rBV3	146785	353351	11.03%	1.245%
46	23.271	3498	3503	3511	rBV2	51442	102384	3.20%	0.361%
47	23.365	3511	3519	3528	rVB2	92296	251120	7.84%	0.885%
48	23.471	3530	3537	3544	rBV2	747293	1404117	43.83%	4.947%
49	24.000	3622	3627	3636	rVB3	48139	102823	3.21%	0.362%
50	24.082	3638	3641	3649	rVV6	17497	38499	1.20%	0.136%
51	24.746	3750	3754	3760	rBV3	36552	70823	2.21%	0.250%
52	25.745	3916	3924	3932	rBV3	44287	133652	4.17%	0.471%
53	26.438	4037	4042	4051	rVB4	26185	69766	2.18%	0.246%
54	26.532	4054	4058	4073	rVB4	45009	137783	4.30%	0.485%

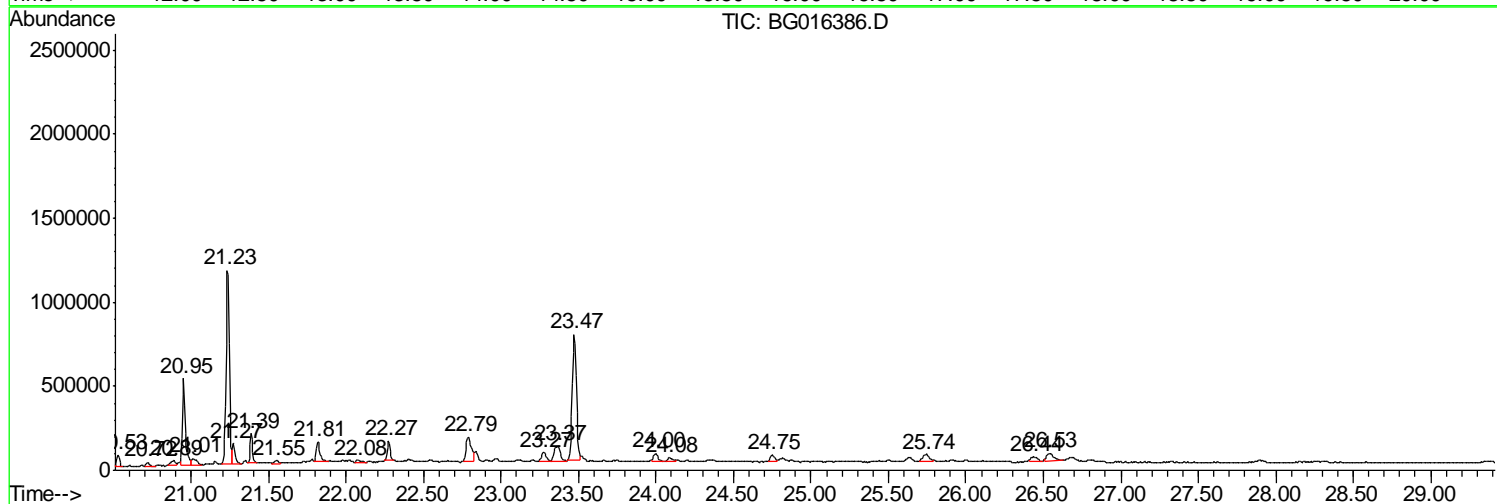
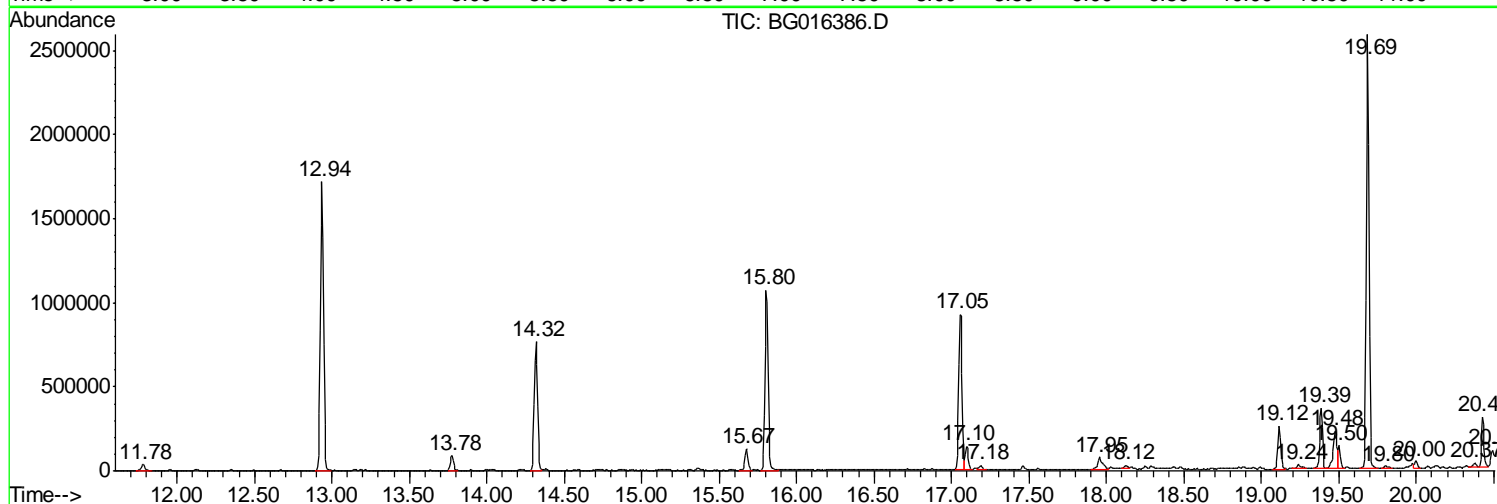
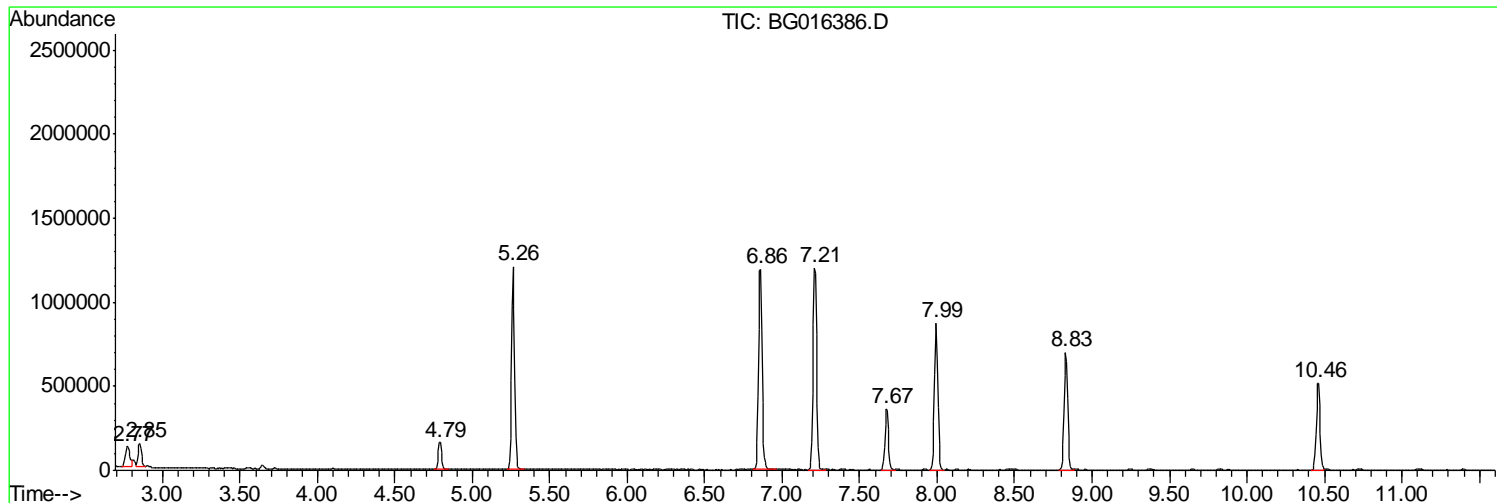
Sum of corrected areas: 28385339

Data Path : Z:\HPCHEM1\BNA\_G\DATA\BG041315\  
 Data File : BG016386.D  
 Acq On : 14 Apr 2015 7:46  
 Operator : TP/IZ  
 Sample : G1831-01  
 Misc :  
 ALS Vial : 26 Sample Multiplier: 1

Instrument :  
 BNA\_G  
 ClientSampled :

Quant Method : Z:\HPCHEM1\BNA\_G\METHODS\8270-BG040615.M  
 Quant Title : ASP BNA STANDARDS FOR 5 POINT CALIBRATION

TIC Library : C:\DATABASE\NIST02.L  
 TIC Integration Parameters: LSCINT.P



Data Path : Z:\HPCHEM1\BNA\_G\DATA\BG041315\  
 Data File : BG016386.D  
 Acq On : 14 Apr 2015 7:46  
 Operator : TP/IZ  
 Sample : G1831-01  
 Misc :  
 ALS Vial : 26 Sample Multiplier: 1

Instrument :  
 BNA\_G  
 ClientSampleID :

Quant Method : Z:\HPCHEM1\BNA\_G\METHODS\8270-BG040615.M  
 Quant Title : ASP BNA STANDARDS FOR 5 POINT CALIBRATION

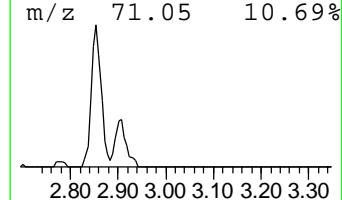
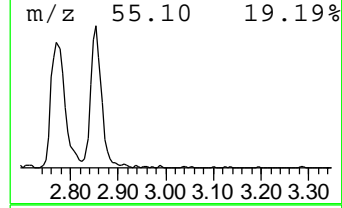
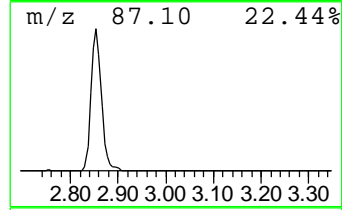
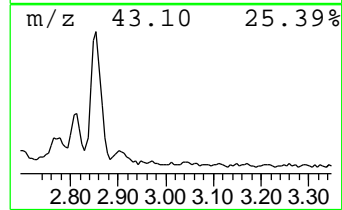
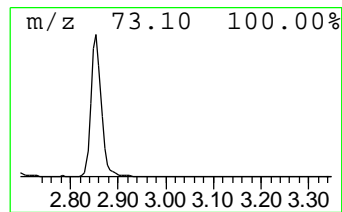
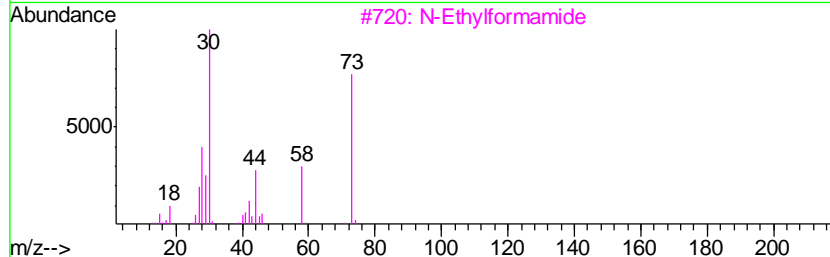
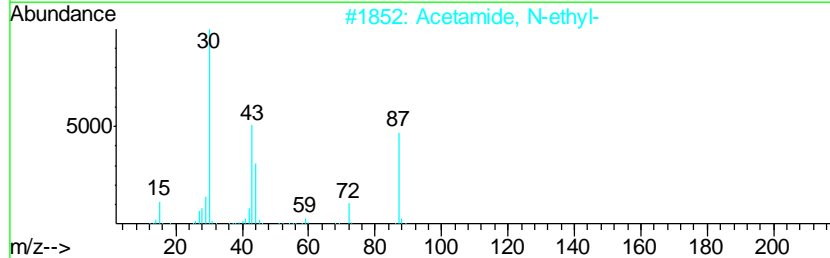
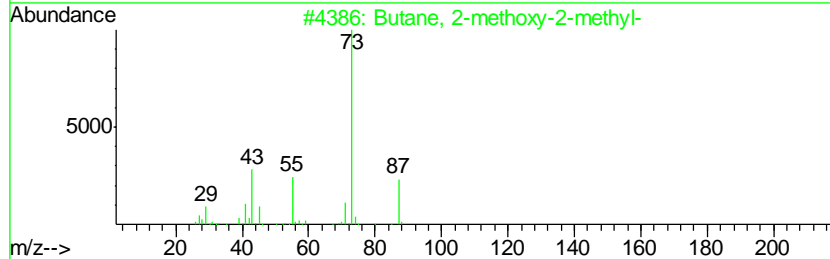
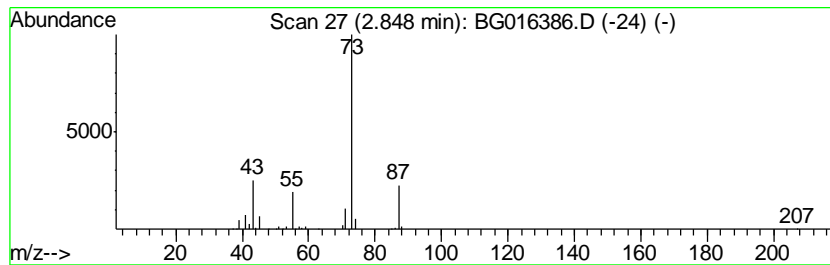
TIC Library : C:\DATABASE\NIST02.L  
 TIC Integration Parameters: LSCINT.P

\*\*\*\*\*  
 Peak Number 2 Butane, 2-methoxy-2-methyl- Concentration Rank 6

R.T.	EstConc	Area	Relative to ISTD	R.T.
2.85	6.88 ng	196522	1,4-Dichlorobenzene-d4	7.67

Hit#	of	Tentative ID	MW	MolForm	CAS#	Qual
1	5	Butane, 2-methoxy-2-methyl-	102	C6H14O	000994-05-8	78
2		Acetamide, N-ethyl-	87	C4H9NO	000625-50-3	9
3		N-Ethylformamide	73	C3H7NO	000627-45-2	9
4		Silane, tetramethyl-	88	C4H12Si	000075-76-3	9
5		Acetic acid, 3-[1,3]dioxolan-2-y...	174	C8H14O4	1000186-02-3	9



Data Path : Z:\HPCHEM1\BNA\_G\DATA\BG041315\  
 Data File : BG016386.D  
 Acq On : 14 Apr 2015 7:46  
 Operator : TP/IZ  
 Sample : G1831-01  
 Misc :  
 ALS Vial : 26 Sample Multiplier: 1

Instrument :  
 BNA\_G  
 ClientSampled :

Quant Method : Z:\HPCHEM1\BNA\_G\METHODS\8270-BG040615.M  
 Quant Title : ASP BNA STANDARDS FOR 5 POINT CALIBRATION

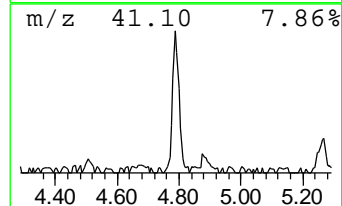
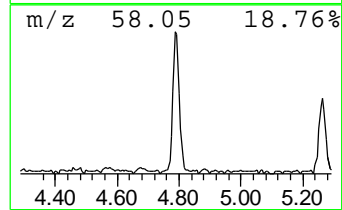
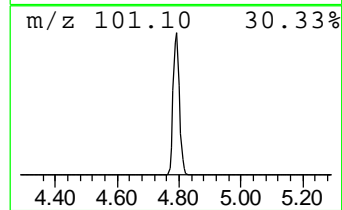
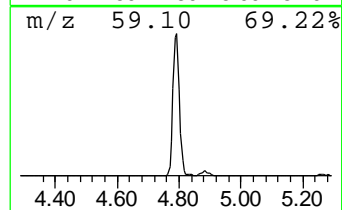
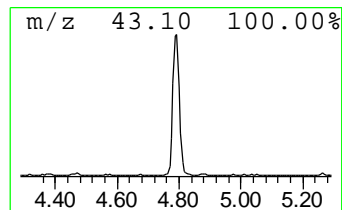
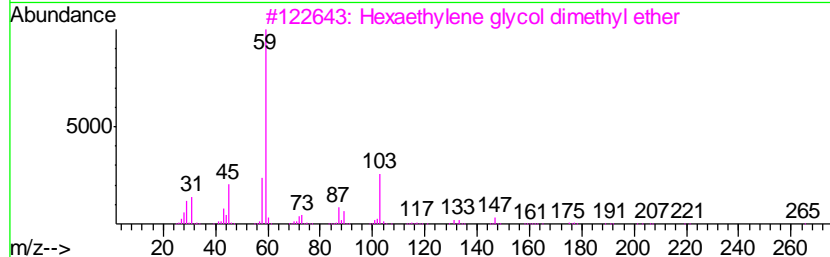
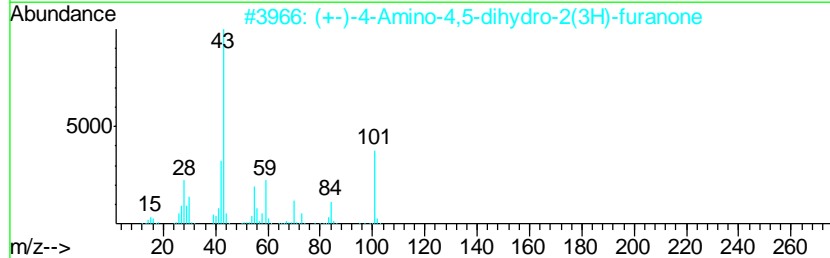
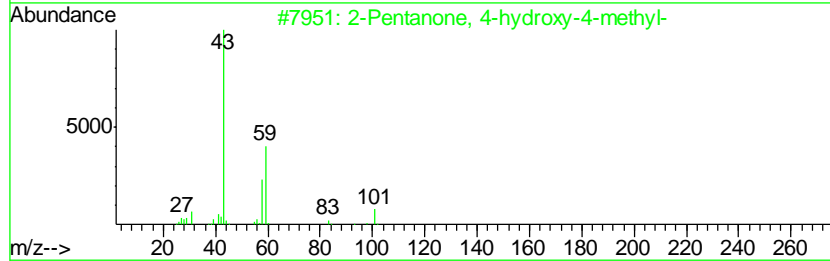
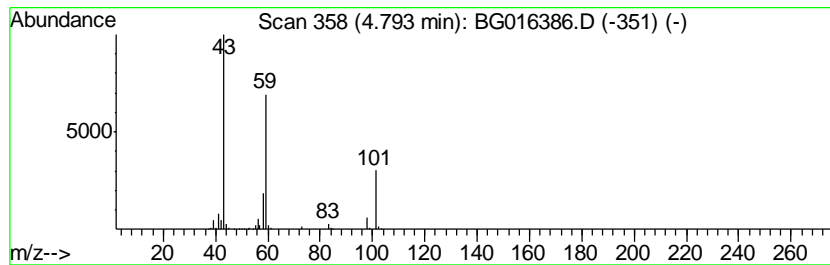
TIC Library : C:\DATABASE\NIST02.L  
 TIC Integration Parameters: LSCINT.P

\*\*\*\*\*  
 Peak Number 3 2-Pentanone, 4-hydroxy-4-me... Concentration Rank 5

R.T.	EstConc	Area	Relative to ISTD	R.T.
4.79	8.18 ng	233589	1,4-Dichlorobenzene-d4	7.67

Hit#	of	Tentative ID	MW	MolForm	CAS#	Qual
1	5	2-Pentanone, 4-hydroxy-4-methyl-	116	C6H12O2	000123-42-2	53
2		(+)-4-Amino-4,5-dihydro-2(3H)-f...	101	C4H7NO2	016504-58-8	43
3		Hexaethylene glycol dimethyl ether	310	C14H30O7	001072-40-8	25
4		2-Butanol, 1-methoxy-	104	C5H12O2	053778-73-7	25
5		1,8-Nonanediol, 8-methyl-	174	C10H22O2	054725-73-4	12



Data Path : Z:\HPCHEM1\BNA\_G\DATA\BG041315\  
 Data File : BG016386.D  
 Acq On : 14 Apr 2015 7:46  
 Operator : TP/IZ  
 Sample : G1831-01  
 Misc :  
 ALS Vial : 26 Sample Multiplier: 1

Instrument :  
 BNA\_G  
 ClientSampleId :

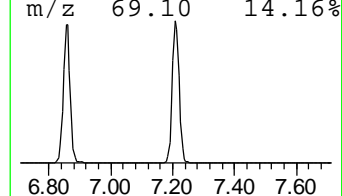
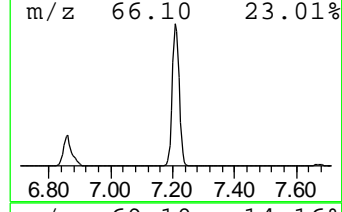
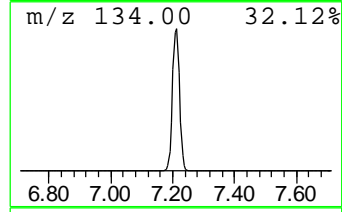
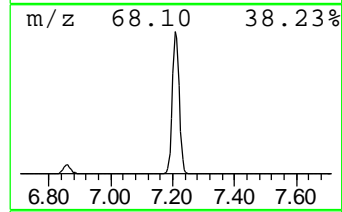
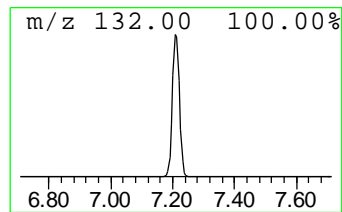
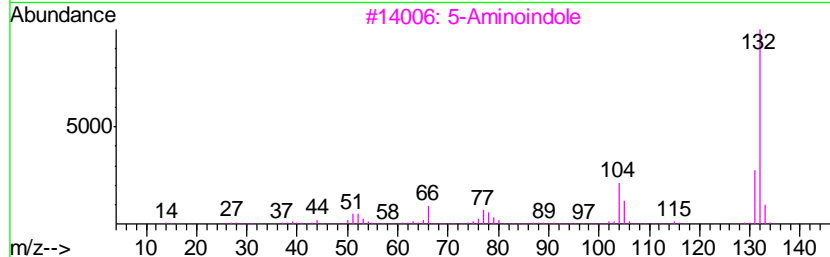
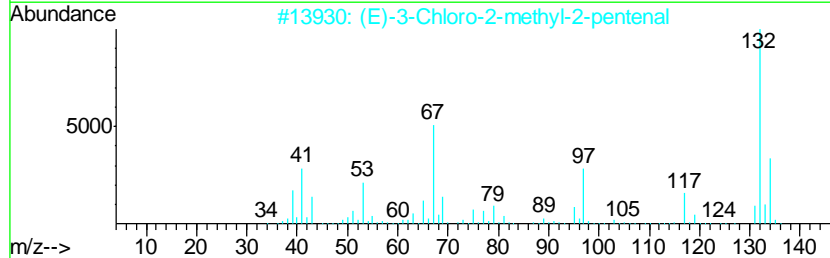
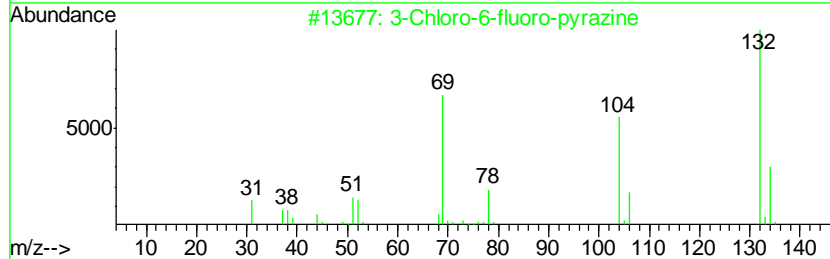
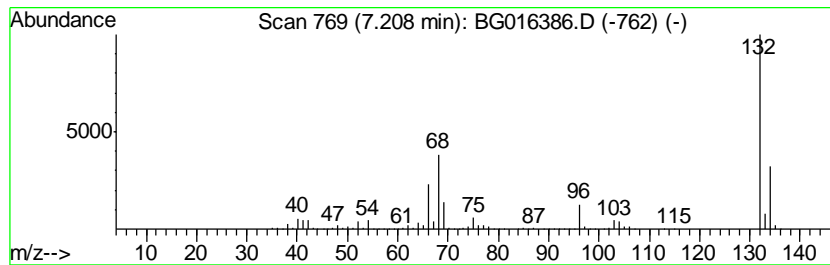
Quant Method : Z:\HPCHEM1\BNA\_G\METHODS\8270-BG040615.M  
 Quant Title : ASP BNA STANDARDS FOR 5 POINT CALIBRATION

TIC Library : C:\DATABASE\NIST02.L  
 TIC Integration Parameters: LSCINT.P

\*\*\*\*\*  
 Peak Number 4 unknown7.21 Concentration Rank 1

R.T.	EstConc	Area	Relative to ISTD	R.T.
7.21	65.63 ng	1873840	1,4-Dichlorobenzene-d4	7.67

Hit#	of	Tentative ID	MW	MolForm	CAS#	Qual
1	5	3-Chloro-6-fluoro-pyrazine	132	C4H2ClFN2	1000146-10-7	27
2		(E)-3-Chloro-2-methyl-2-pentenal	132	C6H9ClO	031357-76-3	16
3		5-Aminoindole	132	C8H8N2	005192-03-0	12
4		Tranylcypromine-propionyl	189	C12H15NO	1000123-86-3	10
5		2H-Cyclopenta[d]pyridazine, 2-me...	132	C8H8N2	022291-85-6	9



Data Path : Z:\HPCHEM1\BNA\_G\DATA\BG041315\  
 Data File : BG016386.D  
 Acq On : 14 Apr 2015 7:46  
 Operator : TP/IZ  
 Sample : G1831-01  
 Misc :  
 ALS Vial : 26 Sample Multiplier: 1

Instrument :  
 BNA\_G  
 ClientSampled :

Quant Method : Z:\HPCHEM1\BNA\_G\METHODS\8270-BG040615.M  
 Quant Title : ASP BNA STANDARDS FOR 5 POINT CALIBRATION

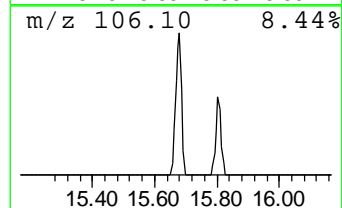
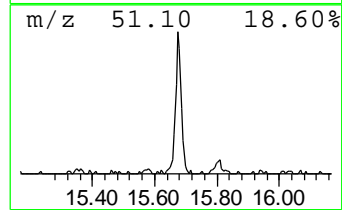
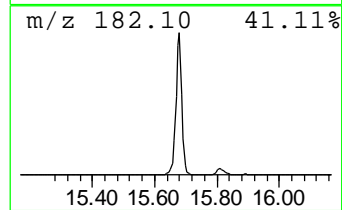
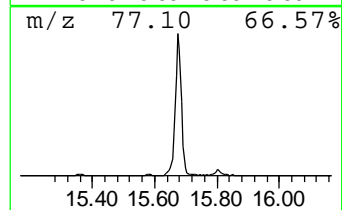
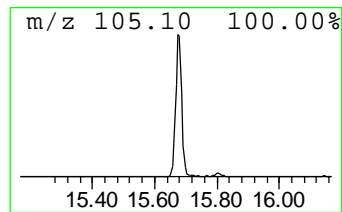
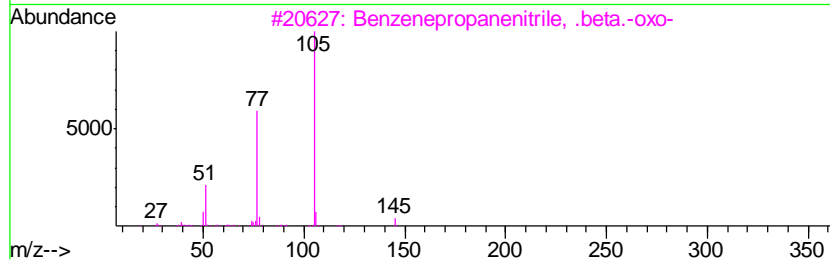
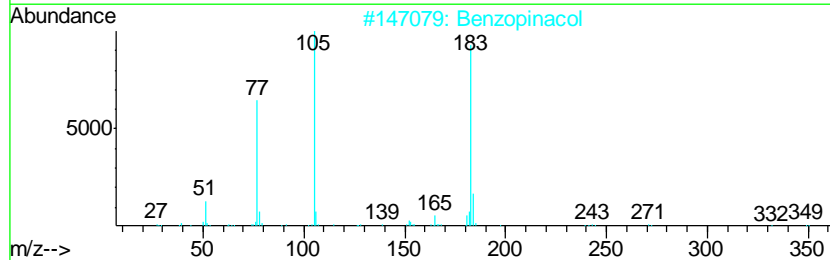
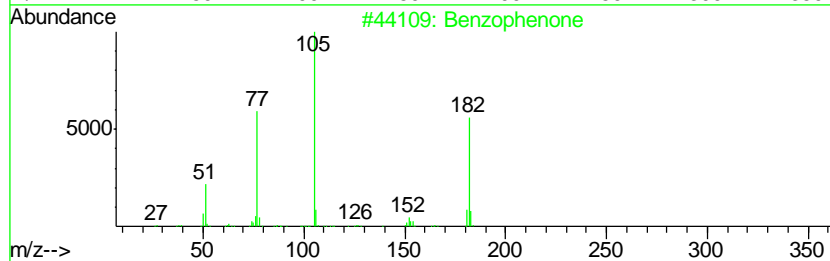
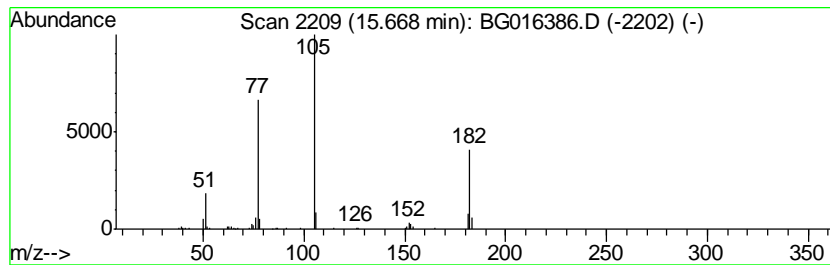
TIC Library : C:\DATABASE\NIST02.L  
 TIC Integration Parameters: LSCINT.P

\*\*\*\*\*  
 Peak Number 6 Benzophenone Concentration Rank 10

R.T.	EstConc	Area	Relative to ISTD	R.T.
15.67	3.25 ng	186015	Acenaphthene-d10	14.32

Hit#	of	Tentative ID	MW	MolForm	CAS#	Qual
1	5	Benzophenone	182	C13H10O	000119-61-9	96
2		Benzopinacol	366	C26H22O2	000464-72-2	47
3		Benzenepropanenitrile, .beta.-oxo-	145	C9H7NO	000614-16-4	47
4		Ethanone, 2-hydroxy-1-phenyl-	136	C8H8O2	000582-24-1	47
5		Benzoyl isothiocyanate	163	C8H5NOS	000532-55-8	47



Data Path : Z:\HPCHEM1\BNA\_G\DATA\BG041315\  
 Data File : BG016386.D  
 Acq On : 14 Apr 2015 7:46  
 Operator : TP/IZ  
 Sample : G1831-01  
 Misc :  
 ALS Vial : 26 Sample Multiplier: 1

Instrument :  
 BNA\_G  
 ClientSampled :

Quant Method : Z:\HPCHEM1\BNA\_G\METHODS\8270-BG040615.M  
 Quant Title : ASP BNA STANDARDS FOR 5 POINT CALIBRATION

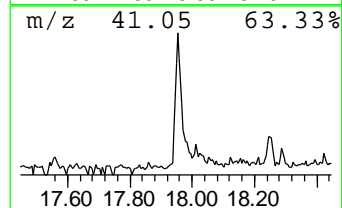
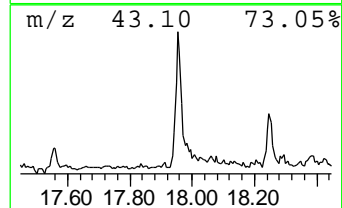
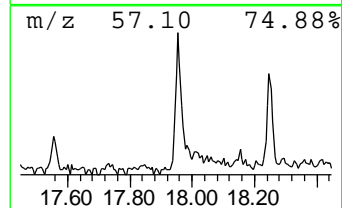
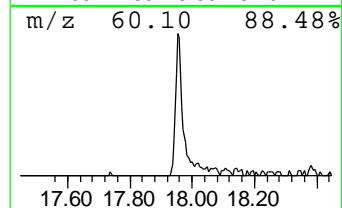
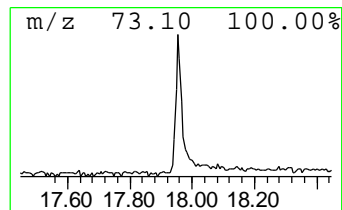
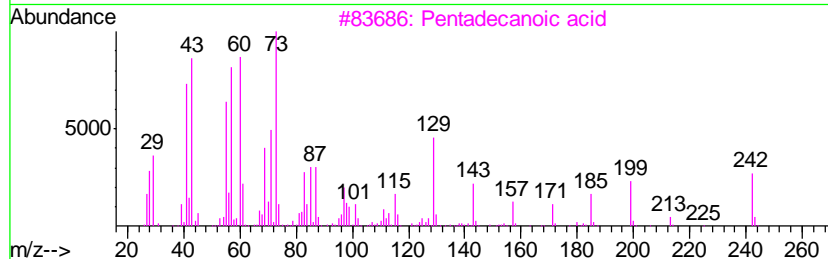
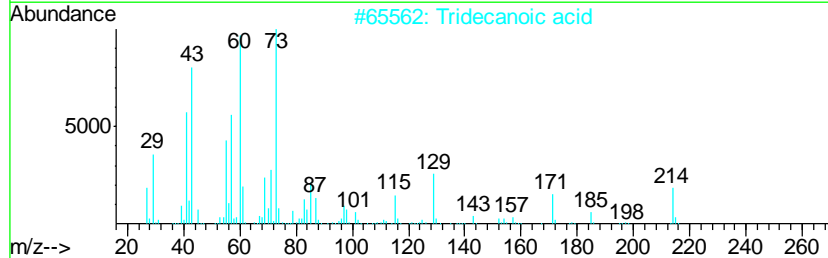
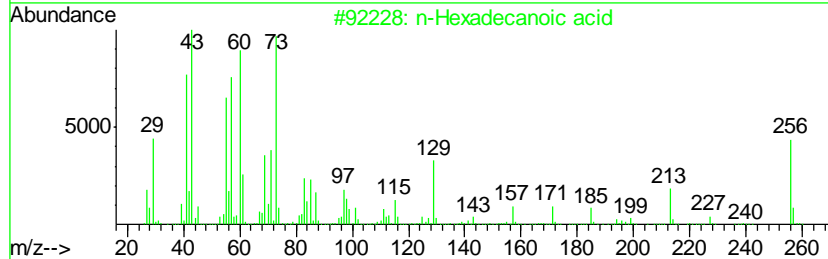
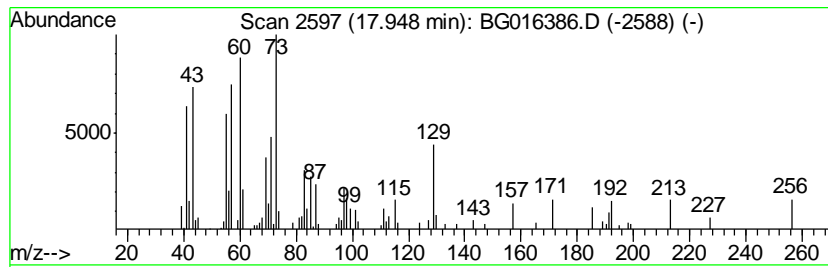
TIC Library : C:\DATABASE\NIST02.L  
 TIC Integration Parameters: LSCINT.P

\*\*\*\*\*  
 Peak Number 7 n-Hexadecanoic acid Concentration Rank 11

R.T.	EstConc	Area	Relative to ISTD	R.T.
17.95	2.49 ng	167824	Phenanthrene-d10	17.06

Hit#	of	Tentative ID	MW	MolForm	CAS#	Qual
1	5	n-Hexadecanoic acid	256	C16H32O2	000057-10-3	98
2		Tridecanoic acid	214	C13H26O2	000638-53-9	93
3		Pentadecanoic acid	242	C15H30O2	001002-84-2	83
4		Tetradecanoic acid	228	C14H28O2	000544-63-8	58
5		Dodecanoic acid	200	C12H24O2	000143-07-7	53





Data Path : Z:\HPCHEM1\BNA\_G\DATA\BG041315\  
 Data File : BG016386.D  
 Acq On : 14 Apr 2015 7:46  
 Operator : TP/IZ  
 Sample : G1831-01  
 Misc :  
 ALS Vial : 26 Sample Multiplier: 1

Instrument :  
 BNA\_G  
 ClientSampled :

Quant Method : Z:\HPCHEM1\BNA\_G\METHODS\8270-BG040615.M  
 Quant Title : ASP BNA STANDARDS FOR 5 POINT CALIBRATION

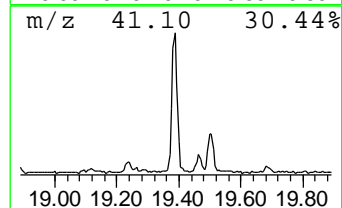
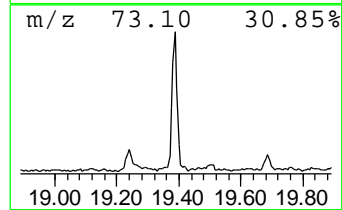
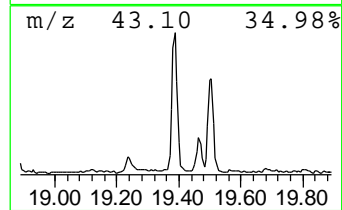
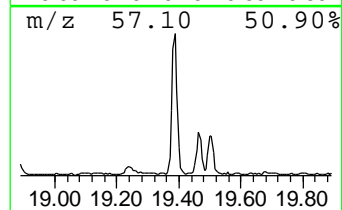
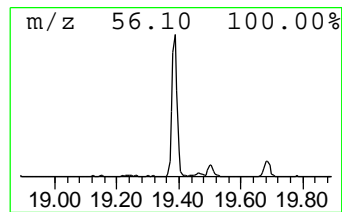
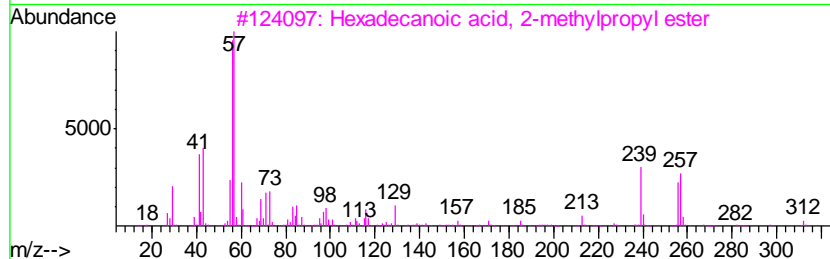
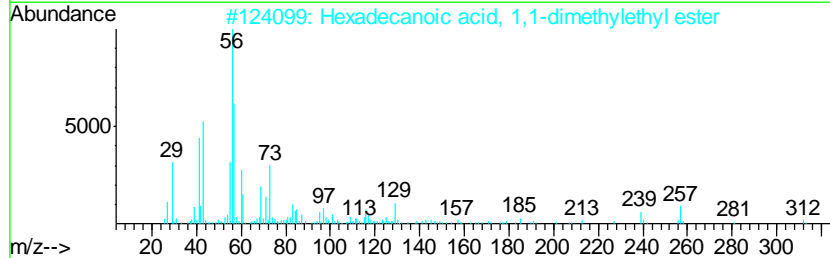
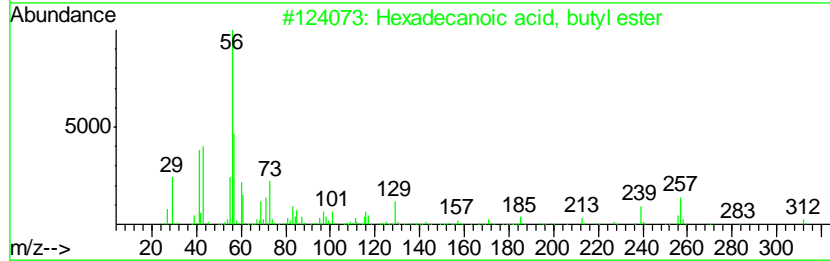
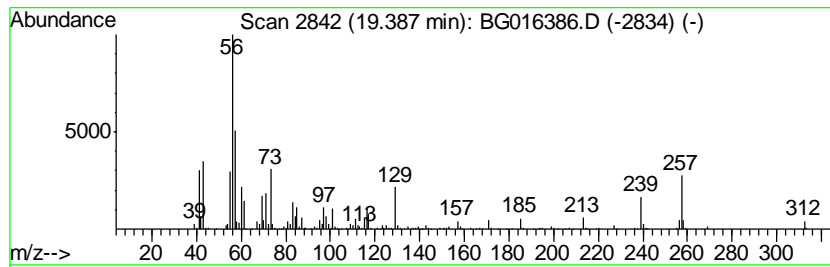
TIC Library : C:\DATABASE\NIST02.L  
 TIC Integration Parameters: LSCINT.P

\*\*\*\*\*  
 Peak Number 8 Hexadecanoic acid, butyl ester Concentration Rank 7

R.T.	EstConc	Area	Relative to ISTD	R.T.
19.39	5.17 ng	427820	Chrysene-d12	21.24

Hit#	of	Tentative ID	MW	MolForm	CAS#	Qual
1	5	Hexadecanoic acid, butyl ester	312	C20H40O2	000111-06-8	99
2		Hexadecanoic acid, 1,1-dimethyle...	312	C20H40O2	031158-91-5	91
3		Hexadecanoic acid, 2-methylpropy...	312	C20H40O2	000110-34-9	81
4		Cyclopentanone, 2,2,5,5-tetramet...	140	C9H16O	004541-35-9	30
5		1-Hexene, 4-methyl-	98	C7H14	003769-23-1	30



Data Path : Z:\HPCHEM1\BNA\_G\DATA\BG041315\  
 Data File : BG016386.D  
 Acq On : 14 Apr 2015 7:46  
 Operator : TP/IZ  
 Sample : G1831-01  
 Misc :  
 ALS Vial : 26 Sample Multiplier: 1

Instrument :  
 BNA\_G  
 ClientSampled :

Quant Method : Z:\HPCHEM1\BNA\_G\METHODS\8270-BG040615.M  
 Quant Title : ASP BNA STANDARDS FOR 5 POINT CALIBRATION

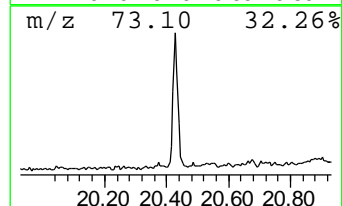
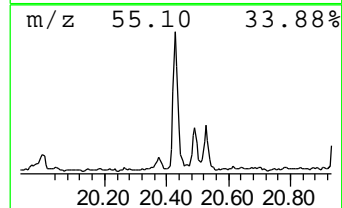
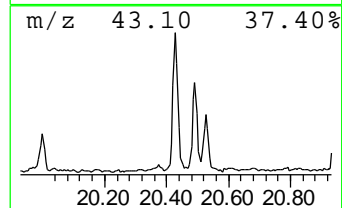
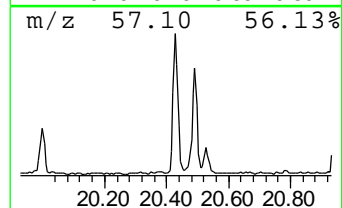
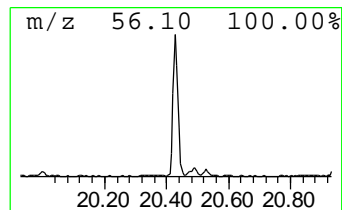
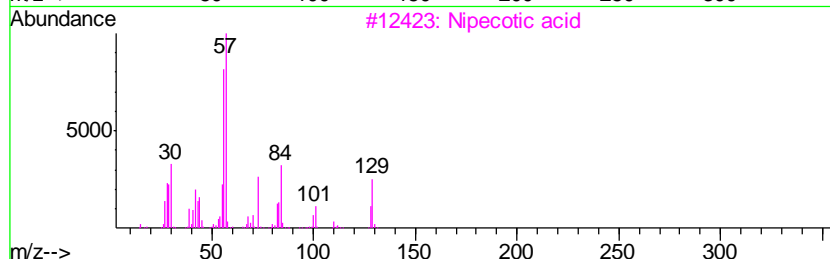
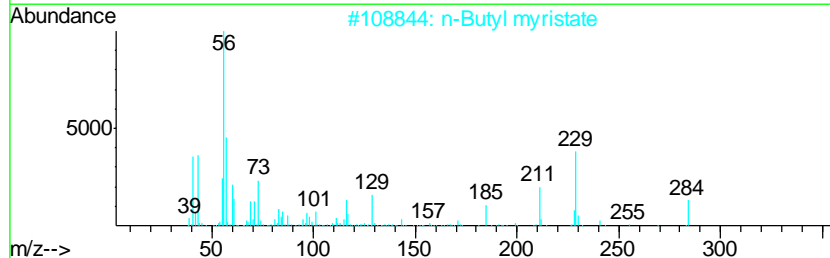
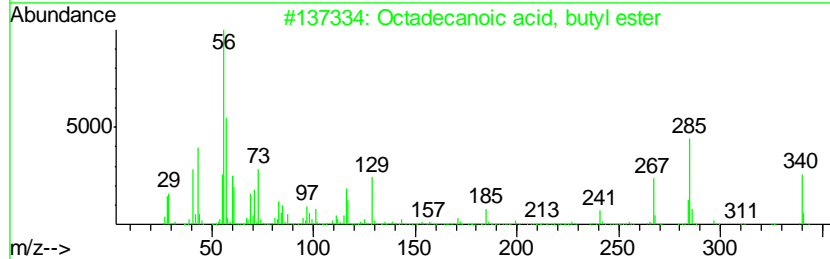
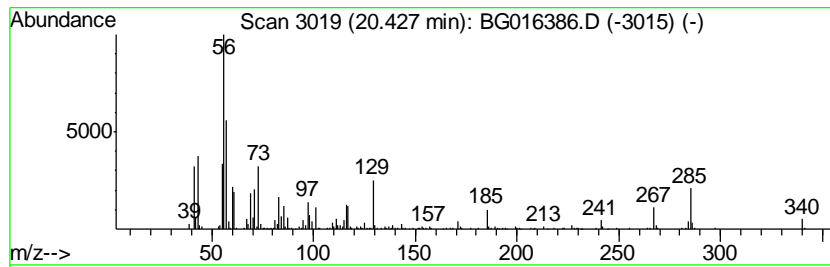
TIC Library : C:\DATABASE\NIST02.L  
 TIC Integration Parameters: LSCINT.P

\*\*\*\*\*  
 Peak Number 9 Octadecanoic acid, butyl ester Concentration Rank 8

R.T.	EstConc	Area	Relative to ISTD	R.T.
20.43	4.05 ng	334976	Chrysene-d12	21.24

Hit#	of	Tentative ID	MW	MolForm	CAS#	Qual
1	5	Octadecanoic acid, butyl ester	340	C22H44O2	000123-95-5	97
2		n-Butyl myristate	284	C18H36O2	000110-36-1	62
3		Nipecotic acid	129	C6H11NO2	000498-95-3	47
4		Octadecanoic acid, 2-methylpropy...	340	C22H44O2	000646-13-9	46
5		1-Hexene, 4-methyl-	98	C7H14	003769-23-1	30



Data Path : Z:\HPCHEM1\BNA\_G\DATA\BG041315\  
 Data File : BG016386.D  
 Acq On : 14 Apr 2015 7:46  
 Operator : TP/IZ  
 Sample : G1831-01  
 Misc :  
 ALS Vial : 26 Sample Multiplier: 1

Instrument :  
 BNA\_G  
 ClientSampled :

Quant Method : Z:\HPCHEM1\BNA\_G\METHODS\8270-BG040615.M  
 Quant Title : ASP BNA STANDARDS FOR 5 POINT CALIBRATION

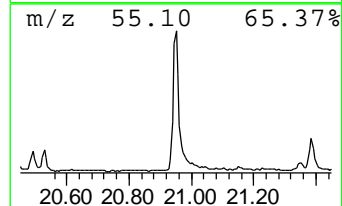
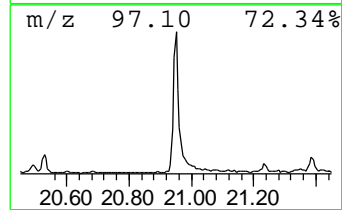
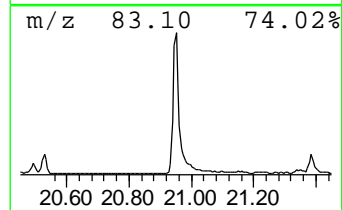
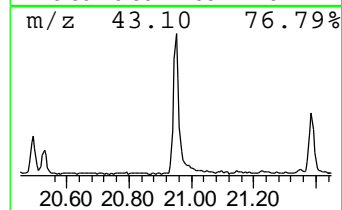
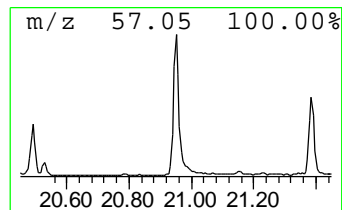
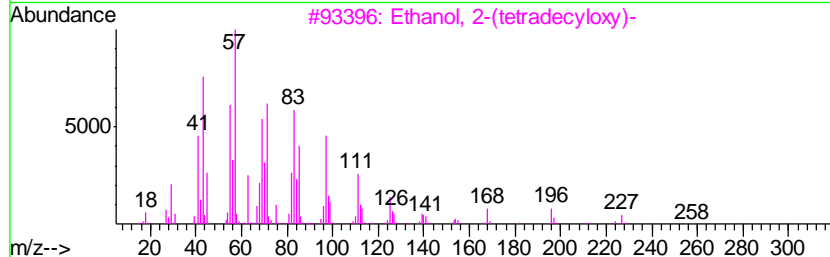
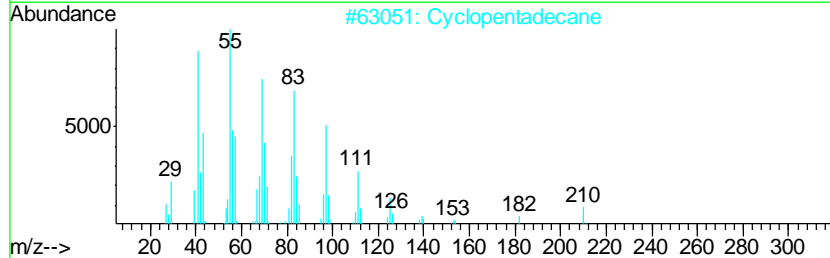
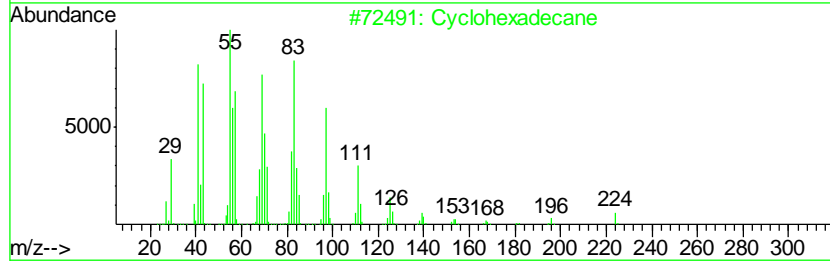
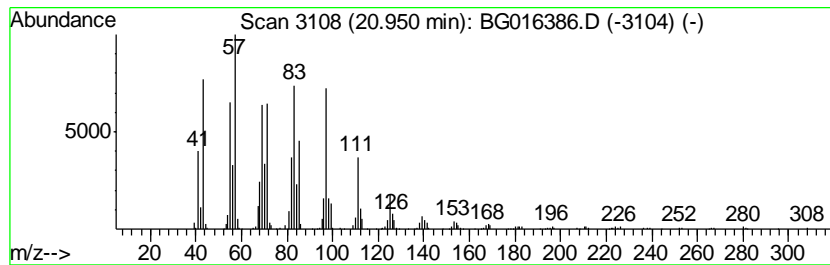
TIC Library : C:\DATABASE\NIST02.L  
 TIC Integration Parameters: LSCINT.P

\*\*\*\*\*  
 Peak Number 10 Cyclohexadecane Concentration Rank 4

R.T.	EstConc	Area	Relative to ISTD	R.T.
20.95	8.52 ng	704410	Chrysene-d12	21.24

Hit#	of	Tentative ID	MW	MolForm	CAS#	Qual
1	5	Cyclohexadecane	224	C16H32	000295-65-8	96
2		Cyclopentadecane	210	C15H30	000295-48-7	93
3		Ethanol, 2-(tetradecyloxy)-	258	C16H34O2	002136-70-1	91
4		Trichloroacetic acid, hexadecyl ...	386	C18H33Cl3O2	074339-54-1	90
5		Pentafluoropropionic acid, hepta...	402	C20H35F5O2	1000283-04-2	90



Data Path : Z:\HPCHEM1\BNA\_G\DATA\BG041315\  
 Data File : BG016386.D  
 Acq On : 14 Apr 2015 7:46  
 Operator : TP/IZ  
 Sample : G1831-01  
 Misc :  
 ALS Vial : 26 Sample Multiplier: 1

Instrument :  
 BNA\_G  
 ClientSampled :

Quant Method : Z:\HPCHEM1\BNA\_G\METHODS\8270-BG040615.M  
 Quant Title : ASP BNA STANDARDS FOR 5 POINT CALIBRATION

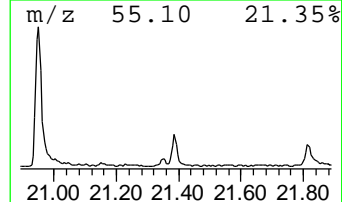
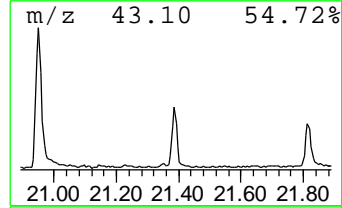
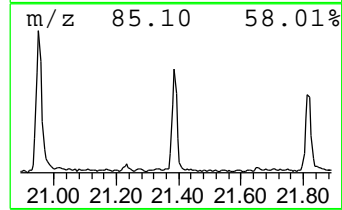
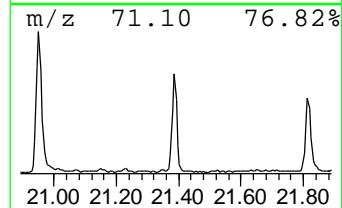
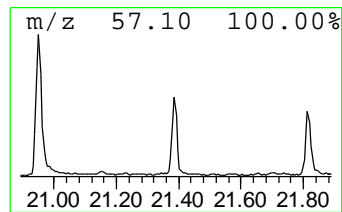
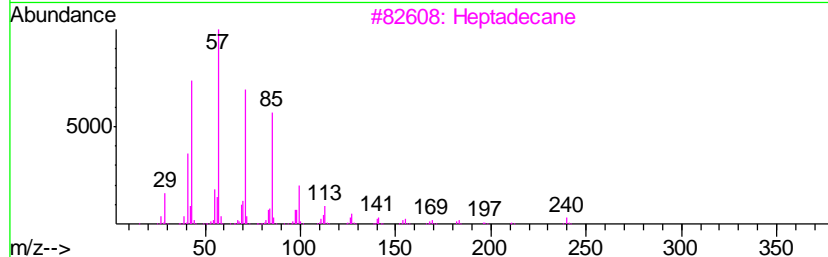
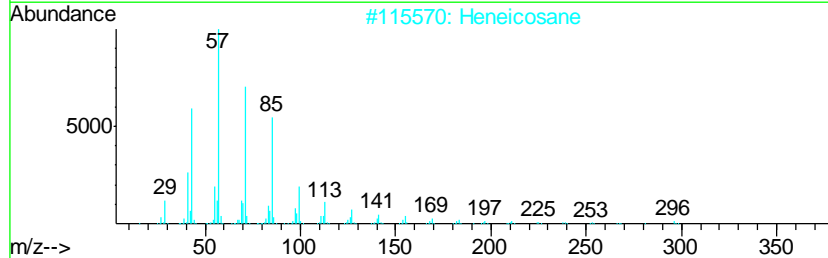
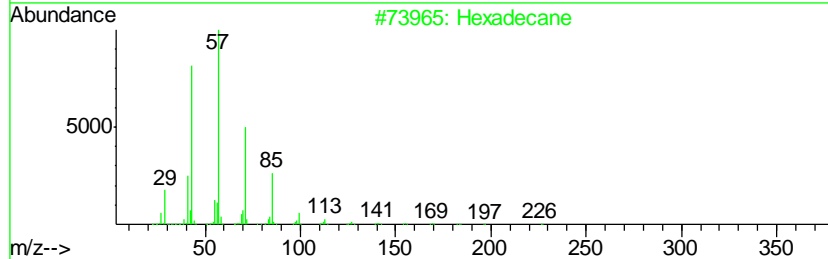
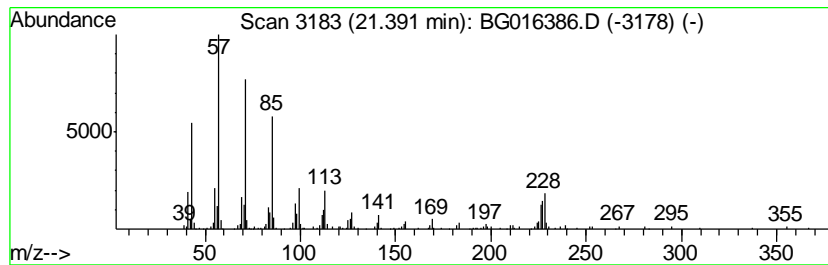
TIC Library : C:\DATABASE\NIST02.L  
 TIC Integration Parameters: LSCINT.P

\*\*\*\*\*  
 Peak Number 11 Hexadecane Concentration Rank 13

R.T.	EstConc	Area	Relative to ISTD	R.T.
21.39	2.20 ng	181936	Chrysene-d12	21.24

Hit#	of	Tentative ID	MW	MolForm	CAS#	Qual
1	5	Hexadecane	226	C16H34	000544-76-3	96
2		Heneicosane	296	C21H44	000629-94-7	87
3		Heptadecane	240	C17H36	000629-78-7	87
4		Eicosane	282	C20H42	000112-95-8	87
5		Heptacosane	380	C27H56	000593-49-7	83



Data Path : Z:\HPCHEM1\BNA\_G\DATA\BG041315\  
 Data File : BG016386.D  
 Acq On : 14 Apr 2015 7:46  
 Operator : TP/IZ  
 Sample : G1831-01  
 Misc :  
 ALS Vial : 26 Sample Multiplier: 1

Instrument :  
 BNA\_G  
 ClientSampleId :

Quant Method : Z:\HPCHEM1\BNA\_G\METHODS\8270-BG040615.M  
 Quant Title : ASP BNA STANDARDS FOR 5 POINT CALIBRATION

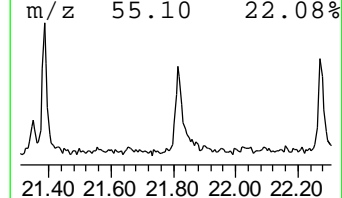
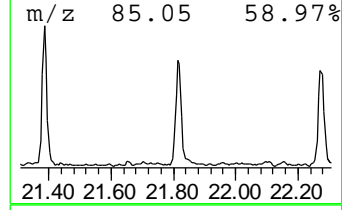
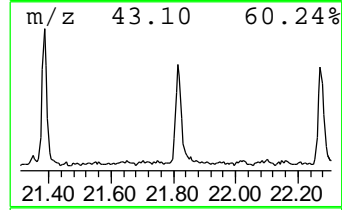
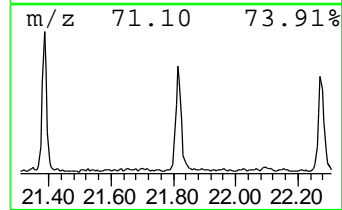
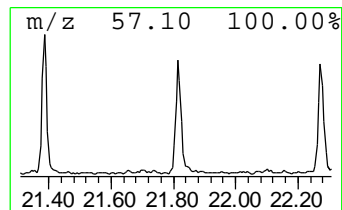
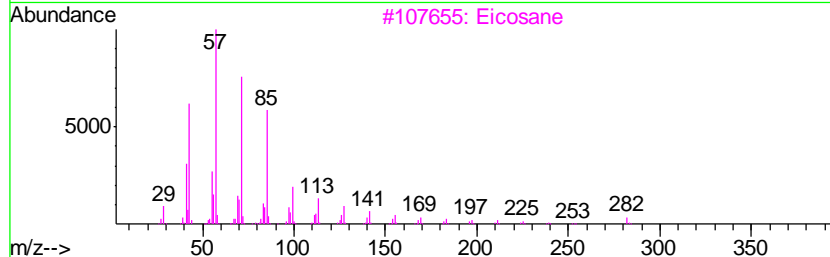
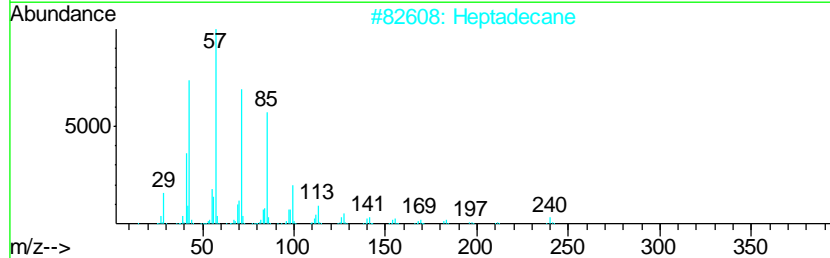
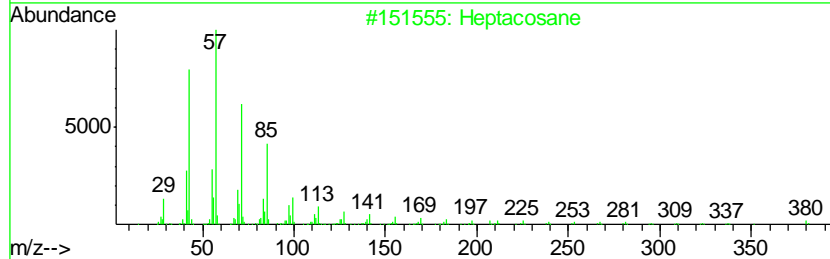
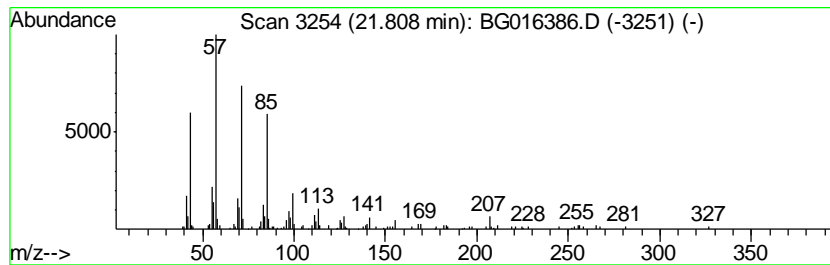
TIC Library : C:\DATABASE\NIST02.L  
 TIC Integration Parameters: LSCINT.P

\*\*\*\*\*  
 Peak Number 12 Heptacosane Concentration Rank 12

R.T.	EstConc	Area	Relative to ISTD	R.T.
21.81	2.26 ng	186845	Chrysene-d12	21.24

Hit#	of	Tentative ID	MW	MolForm	CAS#	Qual
1	5	Heptacosane	380	C27H56	000593-49-7	95
2		Heptadecane	240	C17H36	000629-78-7	91
3		Eicosane	282	C20H42	000112-95-8	91
4		Heneicosane	296	C21H44	000629-94-7	91
5		Octacosane	394	C28H58	000630-02-4	91



Data Path : Z:\HPCHEM1\BNA\_G\DATA\BG041315\  
 Data File : BG016386.D  
 Acq On : 14 Apr 2015 7:46  
 Operator : TP/IZ  
 Sample : G1831-01  
 Misc :  
 ALS Vial : 26 Sample Multiplier: 1

Instrument :  
 BNA\_G  
 ClientSampleId :

Quant Method : Z:\HPCHEM1\BNA\_G\METHODS\8270-BG040615.M  
 Quant Title : ASP BNA STANDARDS FOR 5 POINT CALIBRATION

TIC Library : C:\DATABASE\NIST02.L  
 TIC Integration Parameters: LSCINT.P

TIC Top Hit name	RT	EstConc	Units	Response	--Internal Standard--			
					#	RT	Resp	Conc
Butane, 2-methoxy...	2.85	6.9 ng		196522	1	7.67	571071	20.0
2-Pentanone, 4-hy...	4.79	8.2 ng		233589	1	7.67	571071	20.0
unknown7.21	7.21	65.6 ng		1873840	1	7.67	571071	20.0
Benzophenone	15.67	3.3 ng		186015	3	14.32	1143990	20.0
n-Hexadecanoic acid	17.95	2.5 ng		167824	4	17.06	1346860	20.0
Hexadecanoic acid...	19.39	5.2 ng		427820	5	21.24	1653880	20.0
Octadecanoic acid...	20.43	4.0 ng		334976	5	21.24	1653880	20.0
Cyclohexadecane	20.95	8.5 ng		704410	5	21.24	1653880	20.0
Hexadecane	21.39	2.2 ng		181936	5	21.24	1653880	20.0
Heptacosane	21.81	2.3 ng		186845	5	21.24	1653880	20.0