

Data Path : Z:\HPCHEM1\BNA G\DATA\BG041516\
 Data File : BG021711.D
 Acq On : 16 Apr 2016 10:45
 Operator : UM/SJ
 Sample : H2558-07
 Misc :
 ALS Vial : 19 Sample Multiplier: 1

Instrument :
 BNA_G
 ClientSampleId :
 SB-20-6-6.5

Integration Parameters: rteint.p
 Integrator: RTE
 Smoothing : ON
 Sampling : 1
 Start Thrs: 0.2
 Stop Thrs : 0

Filtering: 5
 Min Area: 3 % of largest Peak
 Max Peaks: 100
 Peak Location: TOP

If leading or trailing edge < 100 prefer < Baseline drop else tangent >
 Peak separation: 5

Method : Z:\HPCHEM1\BNA G\METHODS\8270-BG041316.M
 Title : ASP BNA STANDARDS FOR 5 POINT CALIBRATION

Signal : TIC

peak #	R.T. min	first scan	max scan	last scan	PK TY	peak height	corr. area	corr. % max.	% of total
1	3.103	39	45	63	rBV	2188080	3843572	14.56%	0.712%
2	6.211	568	574	583	rVB2	1923974	3574518	13.54%	0.662%
3	6.845	676	682	692	rVB3	768030	1906041	7.22%	0.353%
4	7.298	755	759	764	rVB	1195063	1934504	7.33%	0.358%
5	7.362	764	770	777	rVB3	1919572	3590047	13.60%	0.665%
6	7.838	844	851	854	rBV	3954089	7094014	26.87%	1.314%
7	7.868	854	856	863	rVB	1740701	2299012	8.71%	0.426%
8	8.120	889	899	905	rBV2	738708	1788738	6.78%	0.331%
9	8.185	905	910	918	rVB	1515857	2715522	10.29%	0.503%
10	8.344	931	937	942	rBV3	834861	1752885	6.64%	0.325%
11	8.749	995	1006	1007	rBV2	1413687	3139828	11.89%	0.582%
12	8.867	1020	1026	1039	rVB3	3052728	6406407	24.27%	1.187%
13	8.984	1039	1046	1050	rBV	1552453	2970614	11.25%	0.550%
14	9.231	1083	1088	1095	rVB	1092007	2330067	8.83%	0.432%
15	9.337	1095	1106	1112	rBV	2369587	5799308	21.97%	1.074%
16	9.466	1116	1128	1136	rVB2	6185250	15707234	59.50%	2.910%
17	9.589	1136	1149	1156	rBV7	1659489	5560837	21.07%	1.030%
18	9.701	1156	1168	1177	rVV8	1177516	4594361	17.40%	0.851%
19	9.801	1178	1185	1190	rVV5	671246	1916961	7.26%	0.355%
20	9.865	1191	1196	1201	rVV	1682374	3124507	11.84%	0.579%
21	9.924	1201	1206	1210	rVV2	1389297	2723205	10.32%	0.504%
22	9.971	1210	1214	1222	rVB2	1738083	3548302	13.44%	0.657%
23	10.112	1229	1238	1242	rBV4	909070	2531189	9.59%	0.469%
24	10.165	1242	1247	1251	rVV2	1746847	3382707	12.81%	0.627%
25	10.230	1251	1258	1263	rVV4	1930240	4627117	17.53%	0.857%
26	10.294	1263	1269	1278	rVV3	2153065	6579336	24.92%	1.219%
27	10.377	1278	1283	1289	rVV2	2081840	4721347	17.89%	0.875%
28	10.453	1289	1296	1302	rVV4	3513908	9008504	34.13%	1.669%
29	10.506	1302	1305	1309	rVV2	1474113	2315968	8.77%	0.429%
30	10.559	1309	1314	1318	rVV	1716295	3085440	11.69%	0.572%
31	10.617	1320	1324	1330	rVV4	1227260	2669945	10.11%	0.495%
32	10.682	1330	1335	1340	rVB	1700167	3049758	11.55%	0.565%
33	10.741	1340	1345	1353	rVB3	974758	2312858	8.76%	0.428%
34	10.823	1353	1359	1368	rBV6	973497	2679955	10.15%	0.496%

Data Path : Z:\HPCHEM1\BNA G\DATA\BG041516\
 Data File : BG021711.D
 Acq On : 16 Apr 2016 10:45
 Operator : UM/SJ
 Sample : H2558-07
 Misc :
 ALS Vial : 19 Sample Multiplier: 1

Instrument :
 BNA_G
 ClientSampleId :
 SB-20-6-6.5

Integration Parameters: rteint.p
 Integrator: RTE
 Smoothing : ON
 Sampling : 1
 Start Thrs: 0.2
 Stop Thrs : 0

Filtering: 5
 Min Area: 3 % of largest Peak
 Max Peaks: 100
 Peak Location: TOP

If leading or trailing edge < 100 prefer < Baseline drop else tangent >
 Peak separation: 5

Method : Z:\HPCHEM1\BNA G\METHODS\8270-BG041316.M
 Title : ASP BNA STANDARDS FOR 5 POINT CALIBRATION

35	10.952	1375	1381	1384	rVV5	860875	2407868	9.12%	0.446%
36	11.023	1384	1393	1398	rVV	8565372	19615434	74.31%	3.634%
37	11.105	1398	1407	1412	rVV4	1163151	3993349	15.13%	0.740%
38	11.193	1412	1422	1428	rVB3	3226574	9142991	34.64%	1.694%
39	11.264	1428	1434	1440	rBV4	1429751	3278155	12.42%	0.607%
40	11.417	1452	1460	1464	rBV5	733692	1818734	6.89%	0.337%
41	11.522	1473	1478	1485	rVB3	2003077	4499153	17.04%	0.834%
42	11.628	1492	1496	1504	rVV4	954343	2436795	9.23%	0.451%
43	11.710	1504	1510	1511	rVV2	1163933	1961622	7.43%	0.363%
44	11.746	1511	1516	1522	rVV4	2654774	6836469	25.90%	1.267%
45	11.798	1522	1525	1532	rVB3	1123732	2348838	8.90%	0.435%
46	11.875	1532	1538	1544	rBV4	2723628	5154943	19.53%	0.955%
47	11.951	1545	1551	1558	rBV3	3258432	6644142	25.17%	1.231%
48	12.057	1564	1569	1573	rVV	3366926	6055736	22.94%	1.122%
49	12.098	1573	1576	1580	rVV2	1320681	2095784	7.94%	0.388%
50	12.145	1580	1584	1590	rVB3	1291966	2406694	9.12%	0.446%
51	12.239	1593	1600	1605	rBV2	4325004	7871381	29.82%	1.458%
52	12.462	1627	1638	1642	rBV3	8434085	19597444	74.24%	3.631%
53	12.586	1655	1659	1664	rVB3	1715892	2821774	10.69%	0.523%
54	12.656	1669	1671	1675	rVV3	1788441	2450086	9.28%	0.454%
55	12.703	1675	1679	1685	rVB3	1357361	2427450	9.20%	0.450%
56	12.950	1716	1721	1725	rVB2	2958538	4587051	17.38%	0.850%
57	13.062	1736	1740	1744	rBV2	1644533	2621406	9.93%	0.486%
58	13.244	1767	1771	1779	rVB3	3148668	4917033	18.63%	0.911%
59	13.326	1780	1785	1788	rBV	2170777	3436893	13.02%	0.637%
60	13.385	1791	1795	1803	rVB3	3332533	6254708	23.69%	1.159%
61	13.561	1821	1825	1830	rVB3	1009100	1669801	6.33%	0.309%
62	13.690	1837	1847	1851	rVB	8842714	20119491	76.22%	3.727%
63	13.802	1862	1866	1872	rVB3	1771671	3027325	11.47%	0.561%
64	14.131	1918	1922	1926	rBV5	1440206	2915612	11.04%	0.540%
65	14.184	1927	1931	1935	rVV3	2524578	5029803	19.05%	0.932%
66	14.225	1935	1938	1943	rVV3	3001209	4442808	16.83%	0.823%
67	14.319	1943	1954	1957	rVV4	4855165	11987976	45.41%	2.221%
68	14.360	1957	1961	1966	rVV2	4204596	6752601	25.58%	1.251%
69	14.431	1968	1973	1978	rVB2	3505450	5579273	21.14%	1.034%
70	14.748	2019	2027	2032	rVB	9769927	19447041	73.67%	3.603%
71	14.807	2033	2037	2042	rBV4	1970509	4272652	16.19%	0.792%

Data Path : Z:\HPCHEM1\BNA G\DATA\BG041516\
 Data File : BG021711.D
 Acq On : 16 Apr 2016 10:45
 Operator : UM/SJ
 Sample : H2558-07
 Misc :
 ALS Vial : 19 Sample Multiplier: 1

Instrument :
 BNA_G
 ClientSampleId :
 SB-20-6-6.5

Integration Parameters: rteint.p
 Integrator: RTE
 Smoothing : ON Filtering: 5
 Sampling : 1 Min Area: 3 % of largest Peak
 Start Thrs: 0.2 Max Peaks: 100
 Stop Thrs : 0 Peak Location: TOP

If leading or trailing edge < 100 prefer < Baseline drop else tangent >
 Peak separation: 5

Method : Z:\HPCHEM1\BNA G\METHODS\8270-BG041316.M
 Title : ASP BNA STANDARDS FOR 5 POINT CALIBRATION

72	15.059	2075	2080	2086	rVB3	1416361	2432405	9.21%	0.451%
73	15.171	2094	2099	2104	rBV2	1622523	4124567	15.62%	0.764%
74	15.224	2105	2108	2113	rVV2	2028803	3359468	12.73%	0.622%
75	15.277	2115	2117	2121	rVB	1538149	1732007	6.56%	0.321%
76	15.341	2121	2128	2135	rBV4	3452558	7995026	30.29%	1.481%
77	15.406	2136	2139	2143	rVB	2171530	2863837	10.85%	0.531%
78	15.459	2144	2148	2153	rBV5	1461370	3303268	12.51%	0.612%
79	15.694	2180	2188	2191	rVB	9477505	17906221	67.83%	3.317%
80	16.082	2245	2254	2258	rBV	4453548	10156694	38.48%	1.882%
81	16.170	2265	2269	2273	rVB	1957153	2705164	10.25%	0.501%
82	16.223	2274	2278	2285	rBV2	1722063	3400167	12.88%	0.630%
83	16.293	2286	2290	2293	rVB2	2514427	3255828	12.33%	0.603%
84	16.546	2326	2333	2347	rVB2	9294681	26397581	100.00%	4.890%
85	16.869	2384	2388	2391	rBV	1616997	2619982	9.93%	0.485%
86	16.928	2395	2398	2404	rVB3	1940763	2932368	11.11%	0.543%
87	17.033	2412	2416	2421	rVB	1993178	2770711	10.50%	0.513%
88	17.098	2423	2427	2430	rBV3	1484242	1982916	7.51%	0.367%
89	17.333	2460	2467	2470	rBV	8791120	15294905	57.94%	2.834%
90	17.380	2470	2475	2479	rVB	4417543	6048049	22.91%	1.120%
91	17.786	2541	2544	2551	rVB2	1753127	2712047	10.27%	0.502%
92	17.850	2551	2555	2562	rBV2	1696642	2951124	11.18%	0.547%
93	18.068	2585	2592	2596	rVB	8408288	14075387	53.32%	2.608%
94	18.743	2701	2707	2711	rBV	7651421	11434638	43.32%	2.118%
95	19.184	2778	2782	2786	rVB	1354721	1915822	7.26%	0.355%
96	19.360	2806	2812	2815	rBV	6844598	9762157	36.98%	1.809%
97	19.924	2902	2908	2912	rVB	5337435	7205276	27.30%	1.335%
98	20.153	2944	2947	2954	rVB	1527792	2328124	8.82%	0.431%
99	20.441	2992	2996	3000	rVB	3962447	4951122	18.76%	0.917%
100	20.935	3076	3080	3084	rBV	2553088	2956739	11.20%	0.548%

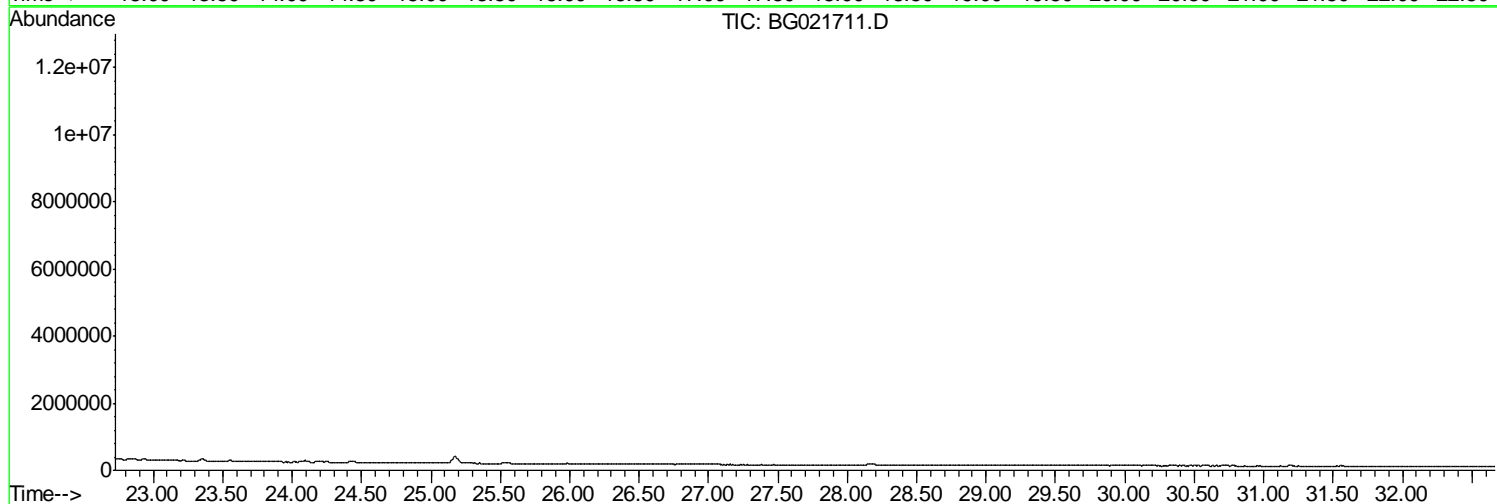
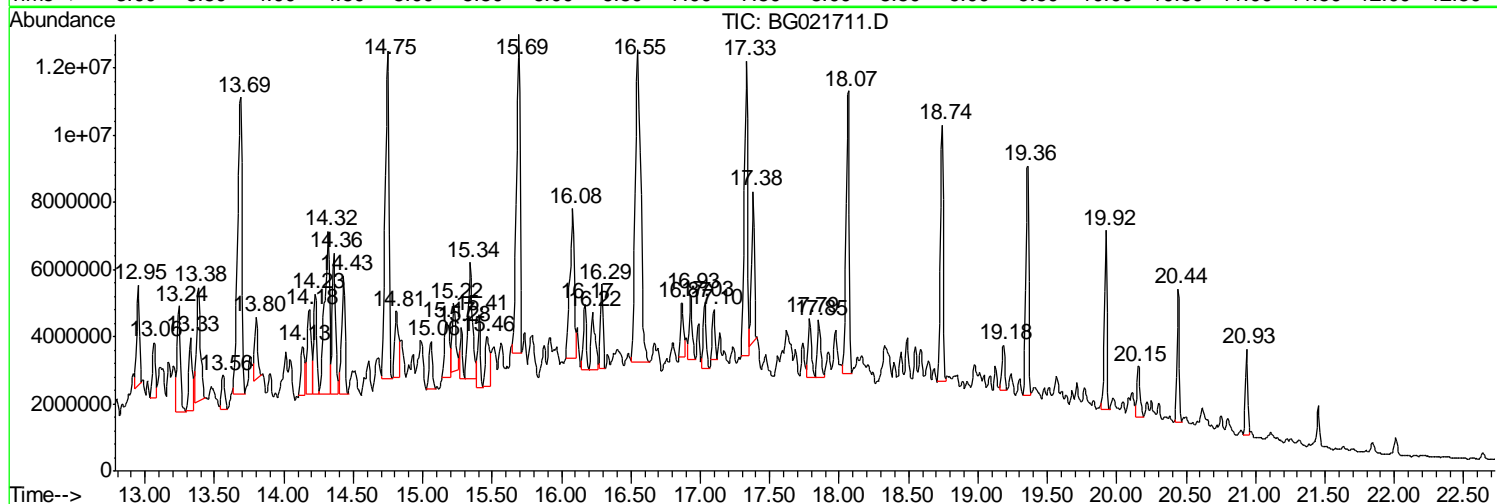
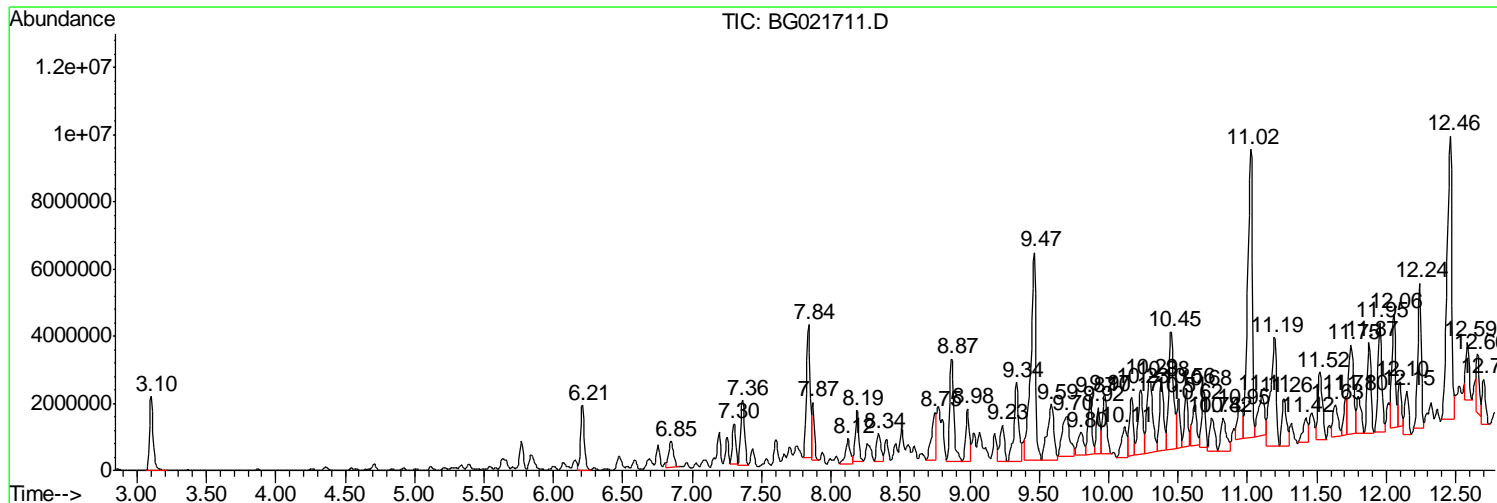
Sum of corrected areas: 539784524

Data Path : Z:\HPCHEM1\BNA G\DATA\BG041516\
 Data File : BG021711.D
 Acq On : 16 Apr 2016 10:45
 Operator : UM/SJ
 Sample : H2558-07
 Misc :
 ALS Vial : 19 Sample Multiplier: 1

Instrument :
 BNA_G
 Client Sampled :
 SB-20-6-6.5

Quant Method : Z:\HPCHEM1\BNA G\METHODS\8270-BG041316.M
 Quant Title : ASP BNA STANDARDS FOR 5 POINT CALIBRATION

TIC Library : C:\DATABASE\NIST02.L
 TIC Integration Parameters: LSCINT.P



Data Path : Z:\HPCHEM1\BNA G\DATA\BG041516\
 Data File : BG021711.D
 Acq On : 16 Apr 2016 10:45
 Operator : UM/SJ
 Sample : H2558-07
 Misc :
 ALS Vial : 19 Sample Multiplier: 1

Instrument :
 BNA_G
 ClientSampleID :
 SB-20-6-6.5

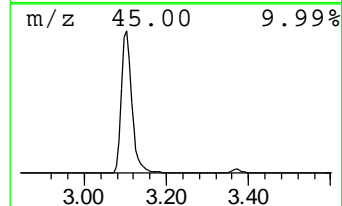
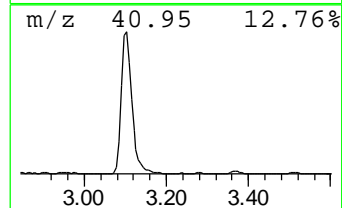
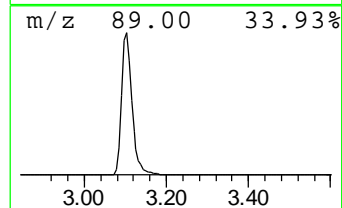
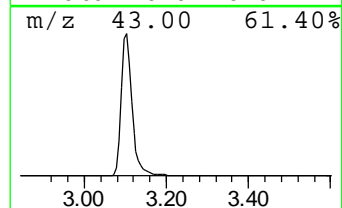
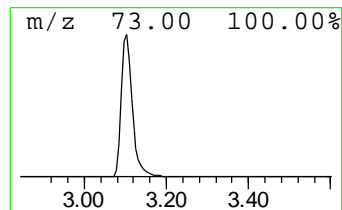
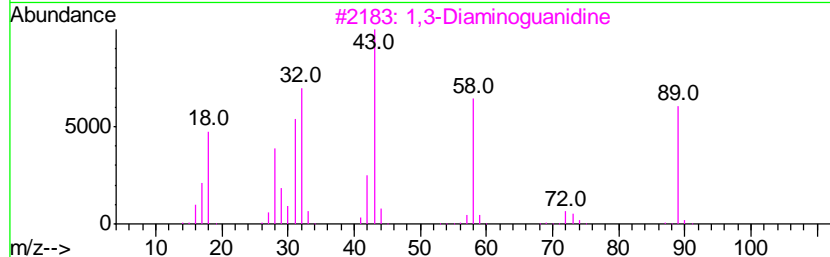
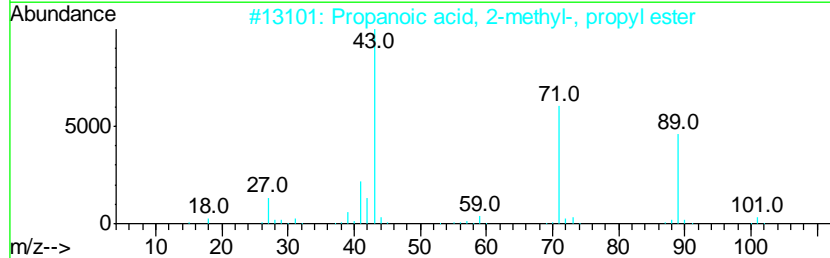
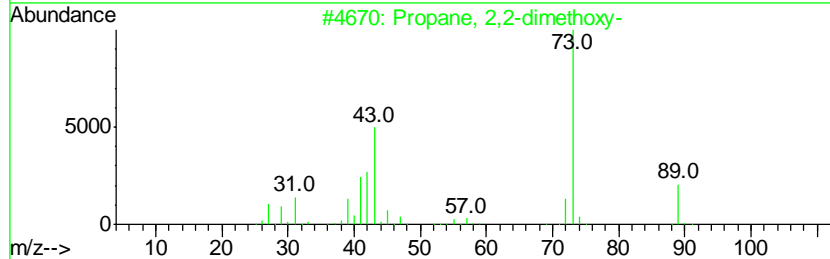
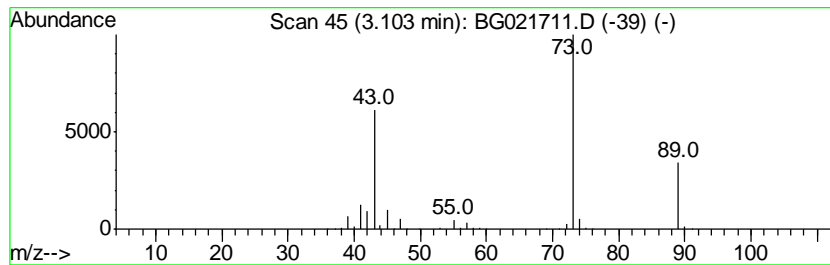
Quant Method : Z:\HPCHEM1\BNA G\METHODS\8270-BG041316.M
 Quant Title : ASP BNA STANDARDS FOR 5 POINT CALIBRATION

TIC Library : C:\DATABASE\NIST02.L
 TIC Integration Parameters: LSCINT.P

 Peak Number 1 unknown3.10 Concentration Rank 20

R.T.	EstConc	Area	Relative to ISTD	R.T.
3.10	28.31 ng	3843570	1,4-Dichlorobenzene-d4	8.22

Hit#	of	Tentative ID	MW	MolForm	CAS#	Qual
1	5	Propane, 2,2-dimethoxy-	104	C5H12O2	000077-76-9	43
2		Propanoic acid, 2-methyl-, propy...	130	C7H14O2	000644-49-5	16
3		1,3-Diaminoquanidine	89	CH7N5	004364-78-7	9
4		N-Ethylformamide	73	C3H7NO	000627-45-2	9
5		1-Propanol, 2-methyl-	74	C4H10O	000078-83-1	9



Data Path : Z:\HPCHEM1\BNA G\DATA\BG041516\
 Data File : BG021711.D
 Acq On : 16 Apr 2016 10:45
 Operator : UM/SJ
 Sample : H2558-07
 Misc :
 ALS Vial : 19 Sample Multiplier: 1

Instrument :
 BNA_G
 ClientSampleID :
 SB-20-6-6.5

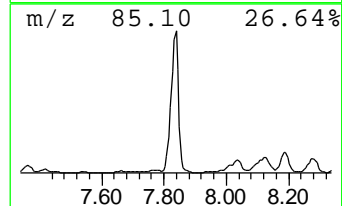
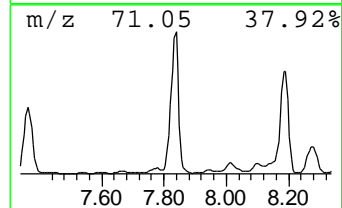
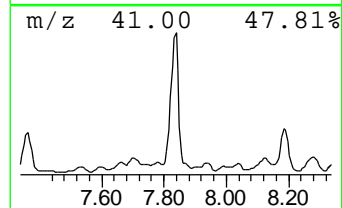
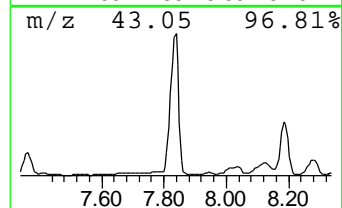
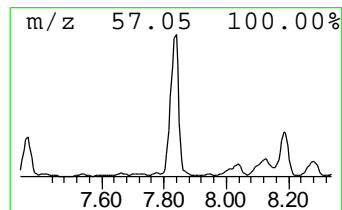
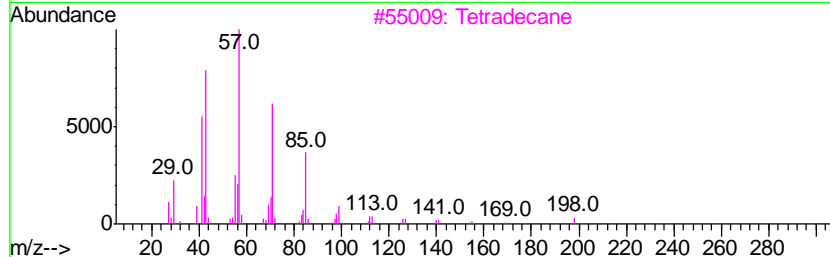
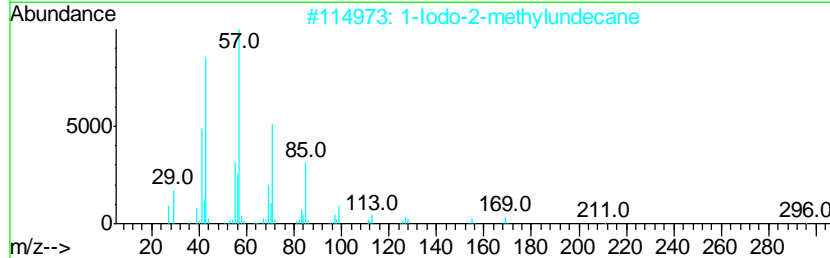
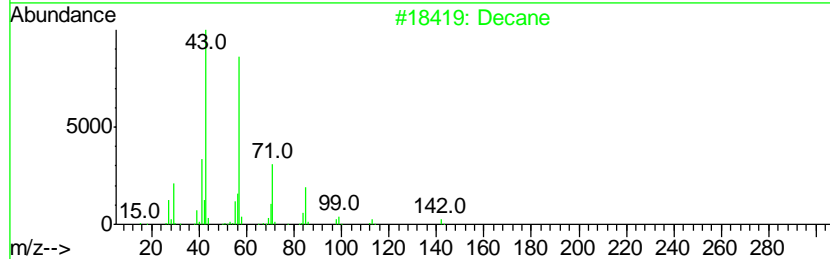
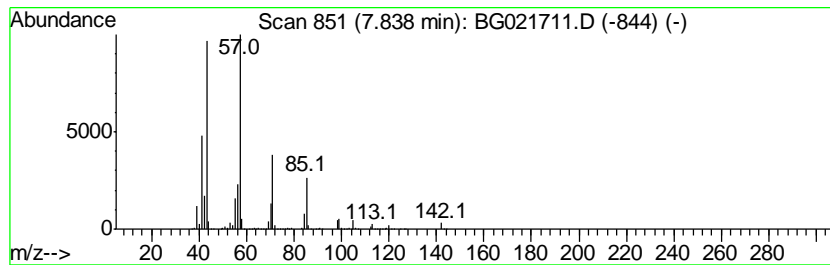
Quant Method : Z:\HPCHEM1\BNA G\METHODS\8270-BG041316.M
 Quant Title : ASP BNA STANDARDS FOR 5 POINT CALIBRATION

TIC Library : C:\DATABASE\NIST02.L
 TIC Integration Parameters: LSCINT.P

 Peak Number 2 Decane Concentration Rank 10

R.T.	EstConc	Area	Relative to ISTD	R.T.
7.84	52.25 ng	7094010	1,4-Dichlorobenzene-d4	8.22

Hit#	of	Tentative ID	MW	MolForm	CAS#	Qual
1	5	Decane	142	C10H22	000124-18-5	93
2		1-Iodo-2-methylundecane	296	C12H25I	073105-67-6	83
3		Tetradecane	198	C14H30	000629-59-4	78
4		Heptane, 2,6-dimethyl-	128	C9H20	001072-05-5	72
5		Decane, 2,9-dimethyl-	170	C12H26	001002-17-1	72



Data Path : Z:\HPCHEM1\BNA G\DATA\BG041516\
 Data File : BG021711.D
 Acq On : 16 Apr 2016 10:45
 Operator : UM/SJ
 Sample : H2558-07
 Misc :
 ALS Vial : 19 Sample Multiplier: 1

Instrument :
 BNA_G
 ClientSampled :
 SB-20-6-6.5

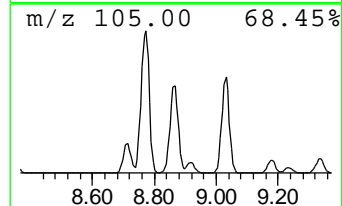
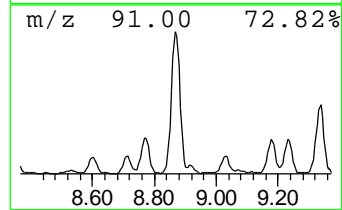
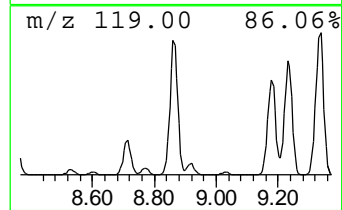
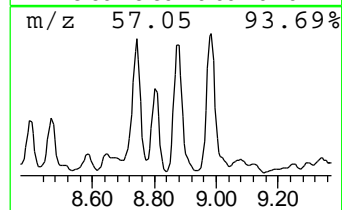
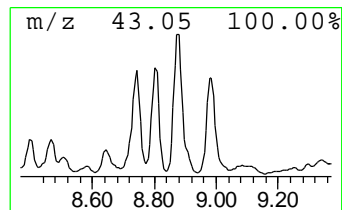
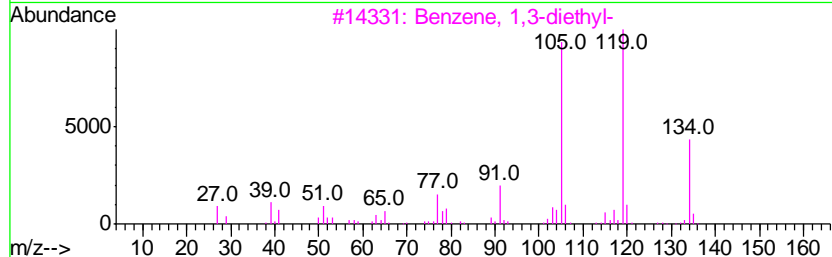
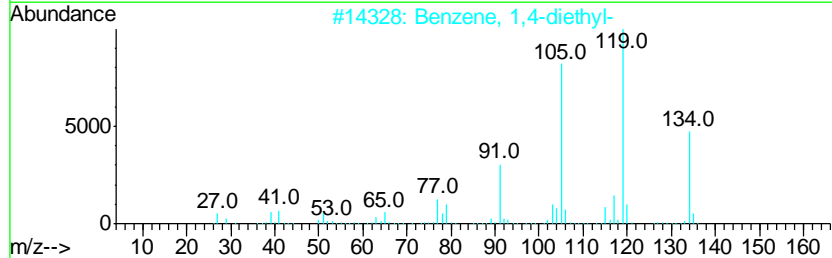
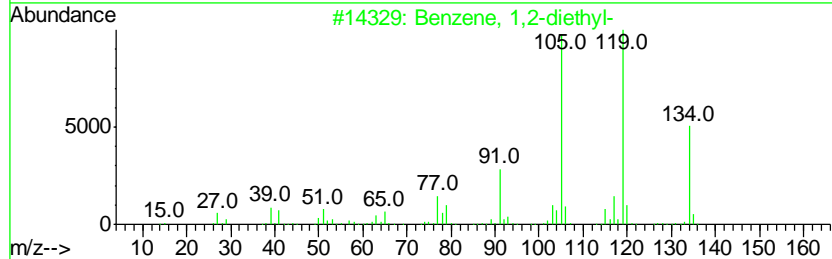
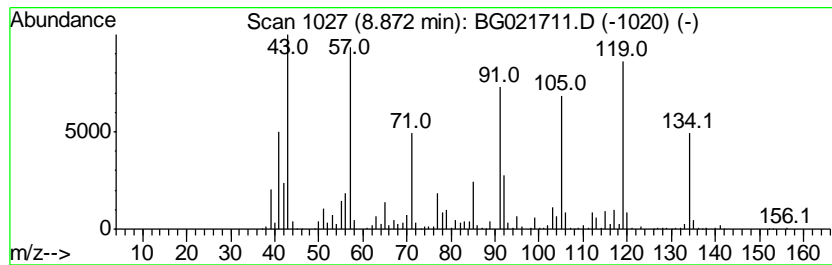
Quant Method : Z:\HPCHEM1\BNA G\METHODS\8270-BG041316.M
 Quant Title : ASP BNA STANDARDS FOR 5 POINT CALIBRATION

TIC Library : C:\DATABASE\NIST02.L
 TIC Integration Parameters: LSCINT.P

 Peak Number 3 Benzene, 1,2-diethyl- Concentration Rank 12

R.T.	EstConc	Area	Relative to ISTD	R.T.
8.87	47.18 ng	6406410	1,4-Dichlorobenzene-d4	8.22

Hit#	of	Tentative ID	MW	MolForm	CAS#	Qual
1	5	Benzene, 1,2-diethyl-	134	C10H14	000135-01-3	95
2		Benzene, 1,4-diethyl-	134	C10H14	000105-05-5	95
3		Benzene, 1,3-diethyl-	134	C10H14	000141-93-5	93
4		Benzene, 2-ethyl-1,4-dimethyl-	134	C10H14	001758-88-9	90
5		Benzene, 1-ethyl-2,3-dimethyl-	134	C10H14	000933-98-2	89



Data Path : Z:\HPCHEM1\BNA G\DATA\BG041516\
 Data File : BG021711.D
 Acq On : 16 Apr 2016 10:45
 Operator : UM/SJ
 Sample : H2558-07
 Misc :
 ALS Vial : 19 Sample Multiplier: 1

Instrument :
 BNA_G
 ClientSampleID :
 SB-20-6-6.5

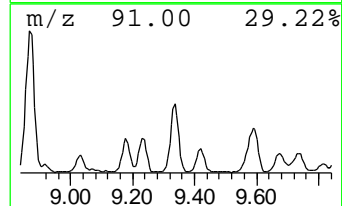
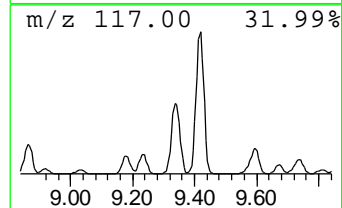
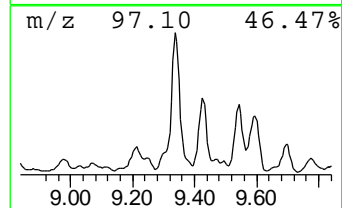
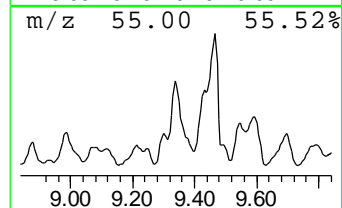
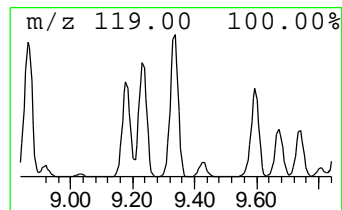
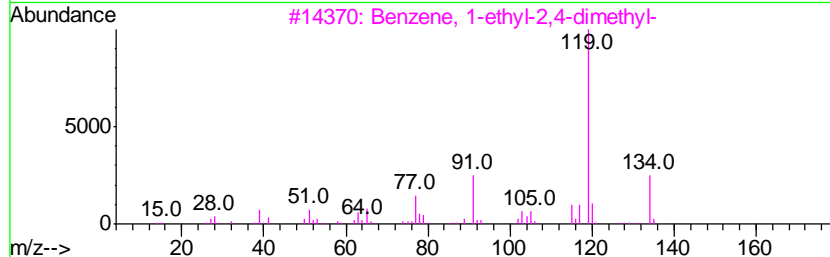
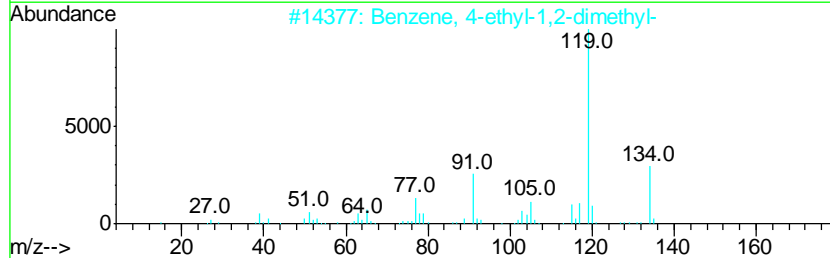
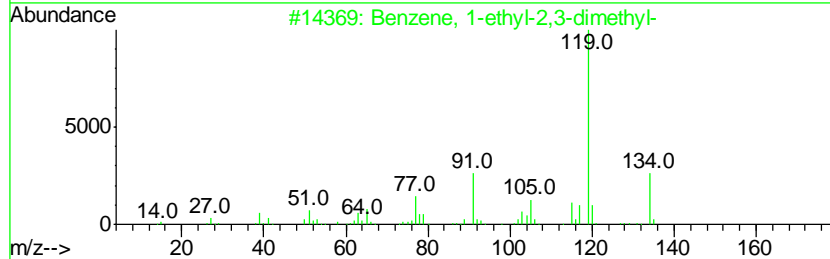
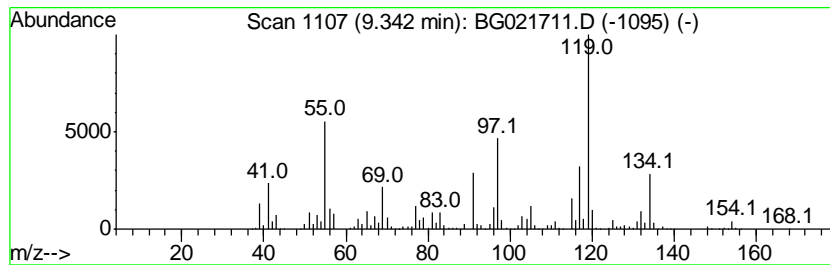
Quant Method : Z:\HPCHEM1\BNA G\METHODS\8270-BG041316.M
 Quant Title : ASP BNA STANDARDS FOR 5 POINT CALIBRATION

TIC Library : C:\DATABASE\NIST02.L
 TIC Integration Parameters: LSCINT.P

 Peak Number 4 Benzene, 1-ethyl-2,3-dimethyl- Concentration Rank 14

R.T.	EstConc	Area	Relative to ISTD	R.T.
9.34	42.71 ng	5799310	1,4-Dichlorobenzene-d4	8.22

Hit#	of	Tentative ID	MW	MolForm	CAS#	Qual
1	5	Benzene, 1-ethyl-2,3-dimethyl-	134	C10H14	000933-98-2	91
2		Benzene, 4-ethyl-1,2-dimethyl-	134	C10H14	000934-80-5	91
3		Benzene, 1-ethyl-2,4-dimethyl-	134	C10H14	000874-41-9	91
4		Benzene, 2-ethyl-1,4-dimethyl-	134	C10H14	001758-88-9	60
5		Benzene, 1-methyl-3-(1-methyleth...	134	C10H14	000535-77-3	60



Data Path : Z:\HPCHEM1\BNA G\DATA\BG041516\
 Data File : BG021711.D
 Acq On : 16 Apr 2016 10:45
 Operator : UM/SJ
 Sample : H2558-07
 Misc :
 ALS Vial : 19 Sample Multiplier: 1

Instrument :
 BNA_G
 ClientSampled :
 SB-20-6-6.5

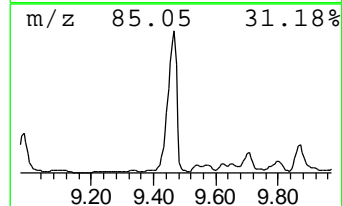
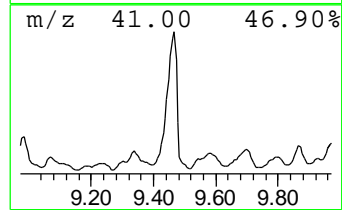
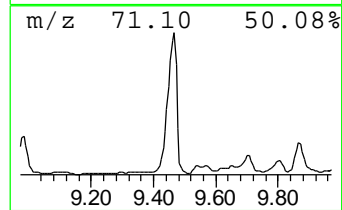
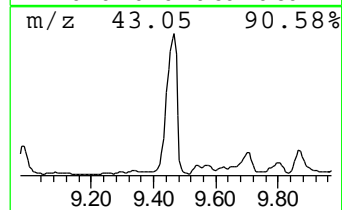
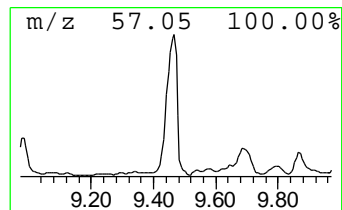
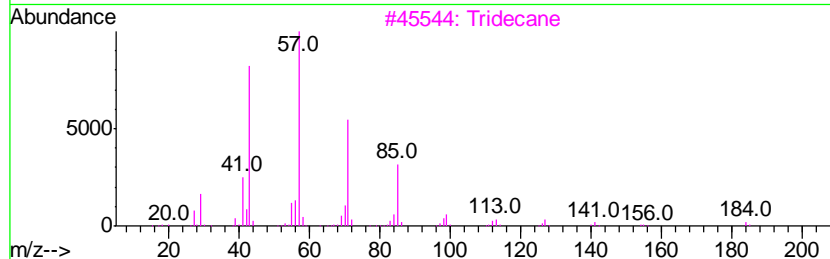
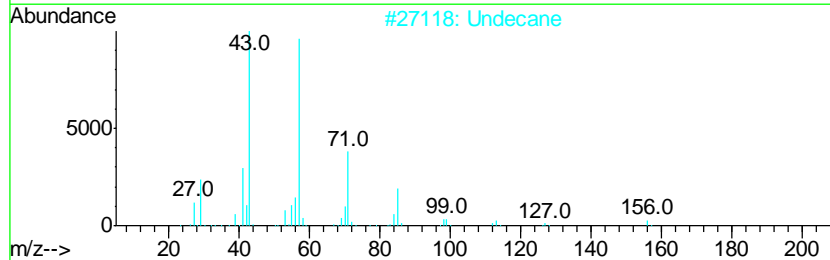
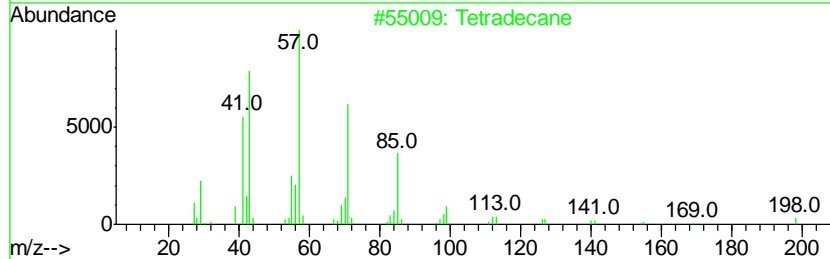
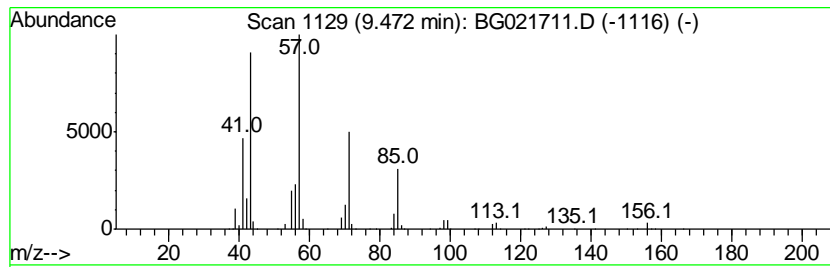
Quant Method : Z:\HPCHEM1\BNA G\METHODS\8270-BG041316.M
 Quant Title : ASP BNA STANDARDS FOR 5 POINT CALIBRATION

TIC Library : C:\DATABASE\NIST02.L
 TIC Integration Parameters: LSCINT.P

 Peak Number 5 Tetradecane Concentration Rank 2

R.T.	EstConc	Area	Relative to ISTD	R.T.
9.47	115.69 ng	15707200	1,4-Dichlorobenzene-d4	8.22

Hit#	of	Tentative ID	MW	MolForm	CAS#	Qual
1	5	Tetradecane	198	C14H30	000629-59-4	78
2		Undecane	156	C11H24	001120-21-4	74
3		Tridecane	184	C13H28	000629-50-5	72
4		Decane	142	C10H22	000124-18-5	64
5		Decane, 6-ethyl-2-methyl-	184	C13H28	062108-21-8	64



Data Path : Z:\HPCHEM1\BNA G\DATA\BG041516\
 Data File : BG021711.D
 Acq On : 16 Apr 2016 10:45
 Operator : UM/SJ
 Sample : H2558-07
 Misc :
 ALS Vial : 19 Sample Multiplier: 1

Instrument :
 BNA_G
 ClientSampled :
 SB-20-6-6.5

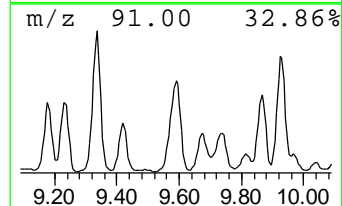
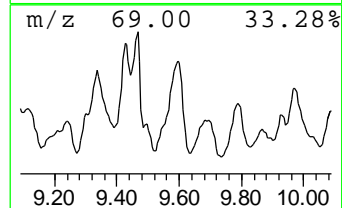
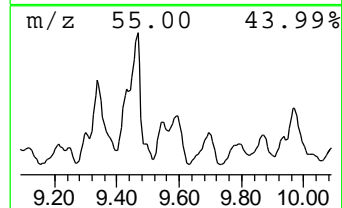
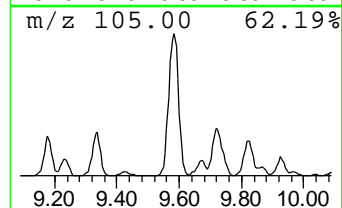
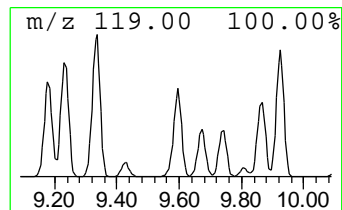
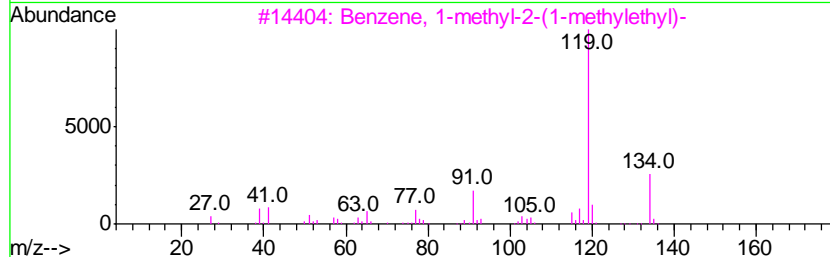
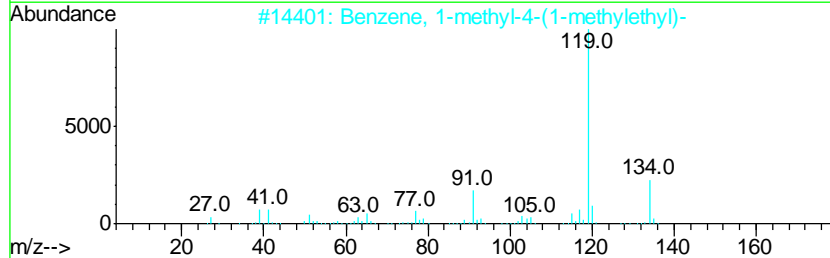
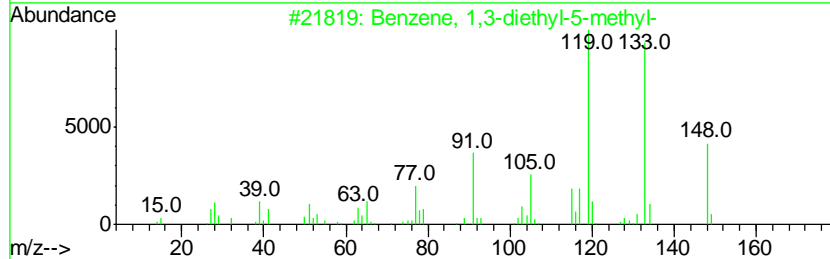
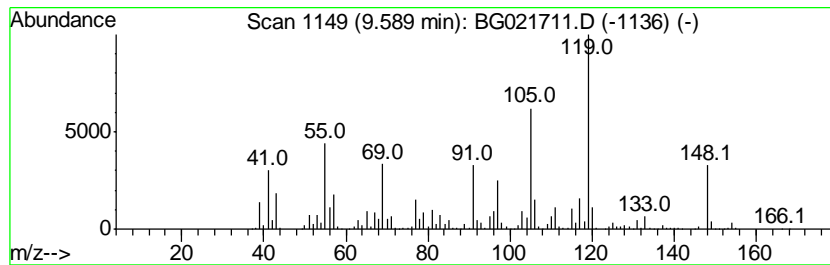
Quant Method : Z:\HPCHEM1\BNA G\METHODS\8270-BG041316.M
 Quant Title : ASP BNA STANDARDS FOR 5 POINT CALIBRATION

TIC Library : C:\DATABASE\NIST02.L
 TIC Integration Parameters: LSCINT.P

 Peak Number 6 Benzene, 1,3-diethyl-5-methyl- Concentration Rank 15

R.T.	EstConc	Area	Relative to ISTD	R.T.
9.59	40.96 ng	5560840	1,4-Dichlorobenzene-d4	8.22

Hit#	of	Tentative ID	MW	MolForm	CAS#	Qual
1	5	Benzene, 1,3-diethyl-5-methyl-	148	C11H16	002050-24-0	70
2		Benzene, 1-methyl-4-(1-methyleth...	134	C10H14	000099-87-6	60
3		Benzene, 1-methyl-2-(1-methyleth...	134	C10H14	000527-84-4	60
4		Benzene, 1-methyl-3-(1-methyleth...	134	C10H14	000535-77-3	53
5		4'-Methylpropiofenone	148	C10H12O	005337-93-9	53



Data Path : Z:\HPCHEM1\BNA G\DATA\BG041516\
 Data File : BG021711.D
 Acq On : 16 Apr 2016 10:45
 Operator : UM/SJ
 Sample : H2558-07
 Misc :
 ALS Vial : 19 Sample Multiplier: 1

Instrument :
 BNA_G
 ClientSampleID :
 SB-20-6-6.5

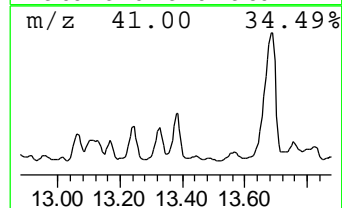
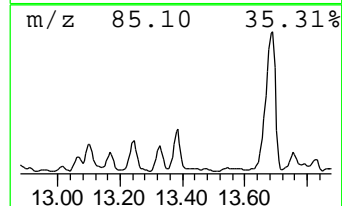
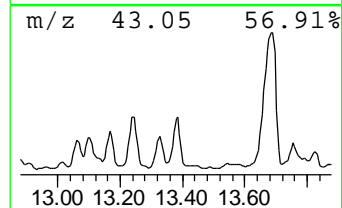
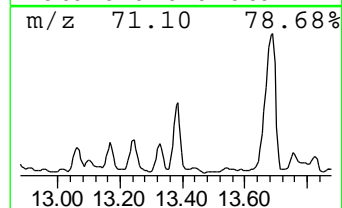
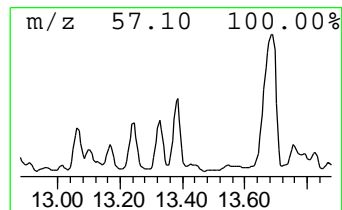
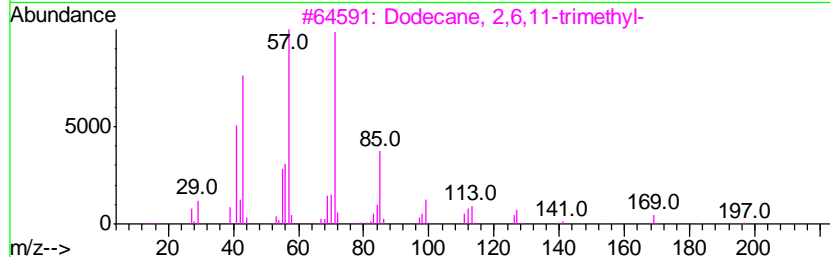
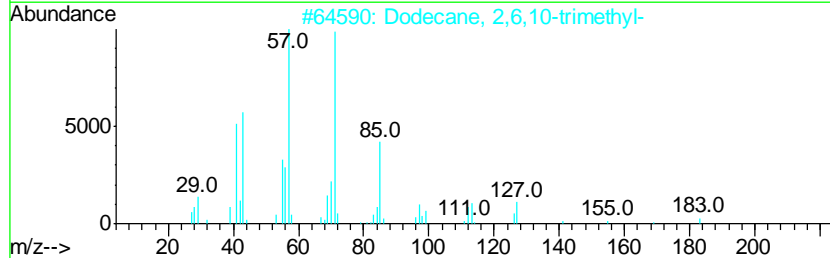
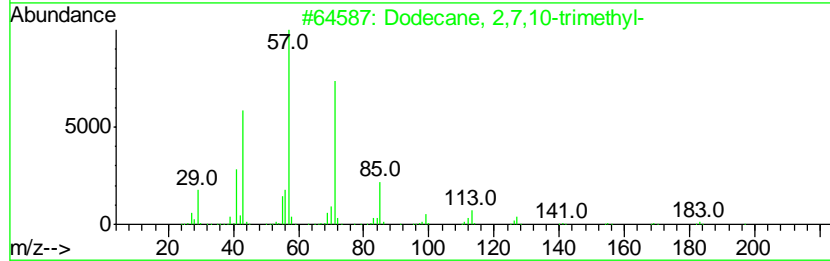
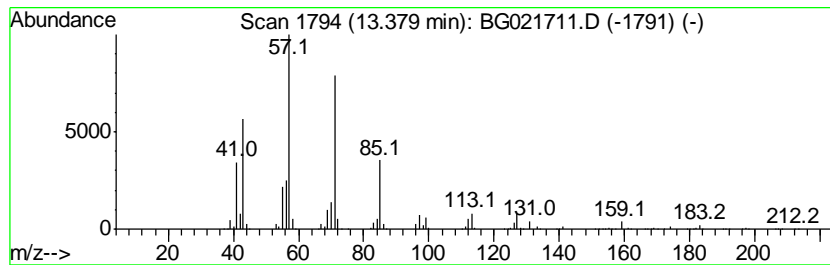
Quant Method : Z:\HPCHEM1\BNA G\METHODS\8270-BG041316.M
 Quant Title : ASP BNA STANDARDS FOR 5 POINT CALIBRATION

TIC Library : C:\DATABASE\NIST02.L
 TIC Integration Parameters: LSCINT.P

 Peak Number 7 Dodecane, 2,7,10-trimethyl- Concentration Rank 19

R.T.	EstConc	Area	Relative to ISTD	R.T.
13.38	29.28 ng	6254710	Acenaphthene-d10	14.85

Hit#	of	Tentative ID	MW	MolForm	CAS#	Qual
1	5	Dodecane, 2,7,10-trimethyl-	212	C15H32	074645-98-0	91
2		Dodecane, 2,6,10-trimethyl-	212	C15H32	003891-98-3	87
3		Dodecane, 2,6,11-trimethyl-	212	C15H32	031295-56-4	86
4		Octane, 2-methyl-	128	C9H20	003221-61-2	83
5		Tridecane	184	C13H28	000629-50-5	83



Data Path : Z:\HPCHEM1\BNA G\DATA\BG041516\
 Data File : BG021711.D
 Acq On : 16 Apr 2016 10:45
 Operator : UM/SJ
 Sample : H2558-07
 Misc :
 ALS Vial : 19 Sample Multiplier: 1

Instrument :
 BNA_G
 ClientSampled :
 SB-20-6-6.5

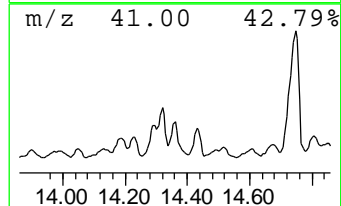
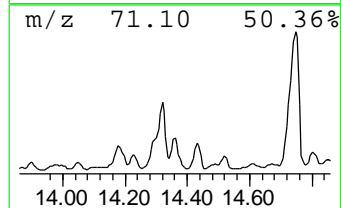
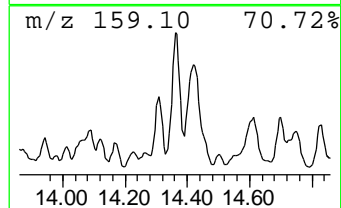
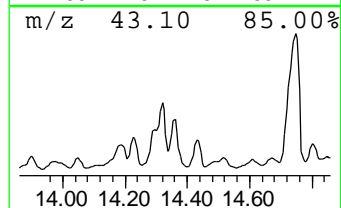
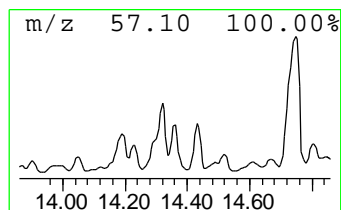
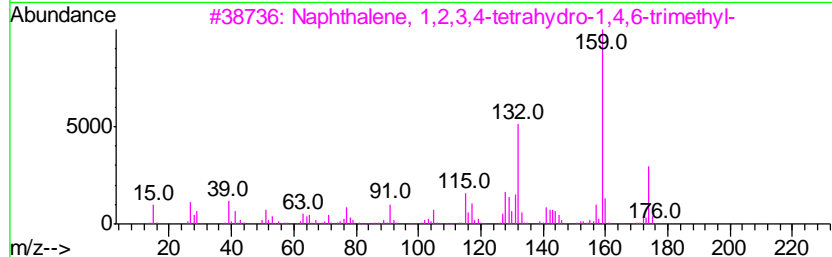
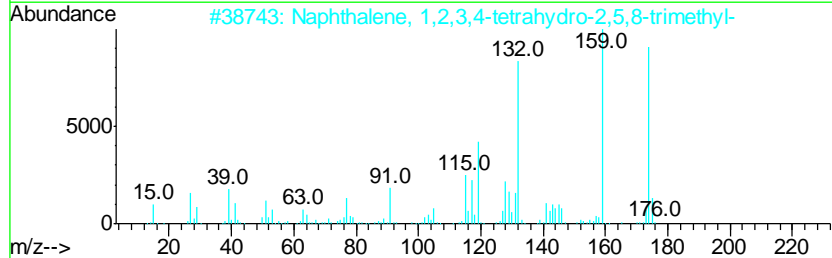
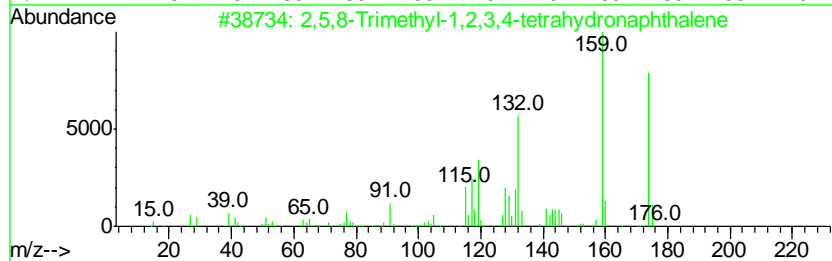
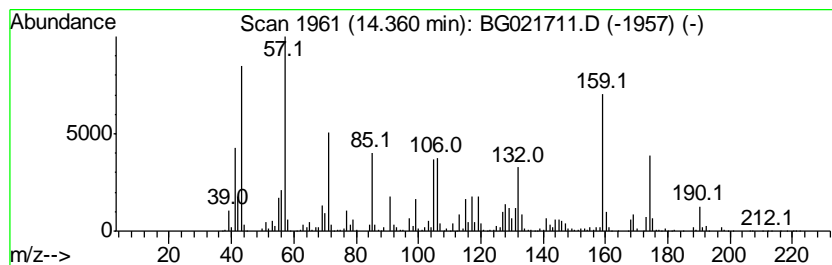
Quant Method : Z:\HPCHEM1\BNA G\METHODS\8270-BG041316.M
 Quant Title : ASP BNA STANDARDS FOR 5 POINT CALIBRATION

TIC Library : C:\DATABASE\NIST02.L
 TIC Integration Parameters: LSCINT.P

 Peak Number 9 2,5,8-Trimethyl-1,2,3,4-tet... Concentration Rank 18

R.T.	EstConc	Area	Relative to ISTD	R.T.
14.36	31.61 ng	6752600	Acenaphthene-d10	14.85

Hit#	of	Tentative ID	MW	MolForm	CAS#	Qual
1	5	2,5,8-Trimethyl-1,2,3,4-tetrahyd...	174	C13H18	068269-15-8	87
2		Naphthalene, 1,2,3,4-tetrahydro-...	174	C13H18	030316-17-7	64
3		Naphthalene, 1,2,3,4-tetrahydro-...	174	C13H18	022824-32-4	55
4		Naphthalene, 1,2,3,4-tetrahydro-...	174	C13H18	000475-03-6	46
5		Tetradecane, 2-methyl-	212	C15H32	001560-95-8	43



Data Path : Z:\HPCHEM1\BNA G\DATA\BG041516\
 Data File : BG021711.D
 Acq On : 16 Apr 2016 10:45
 Operator : UM/SJ
 Sample : H2558-07
 Misc :
 ALS Vial : 19 Sample Multiplier: 1

Instrument :
 BNA_G
 ClientSampled :
 SB-20-6-6.5

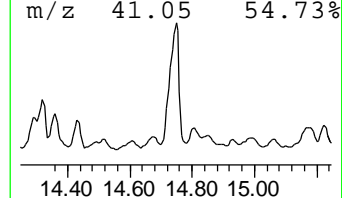
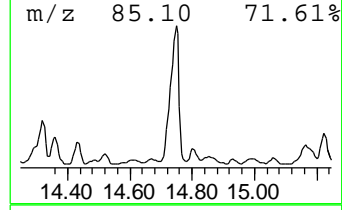
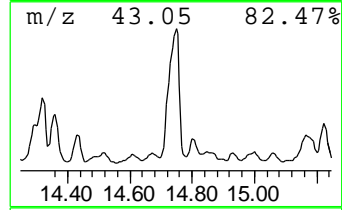
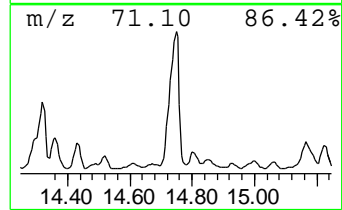
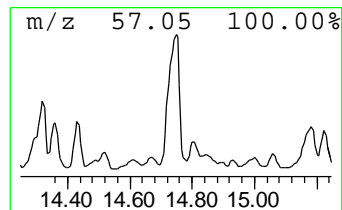
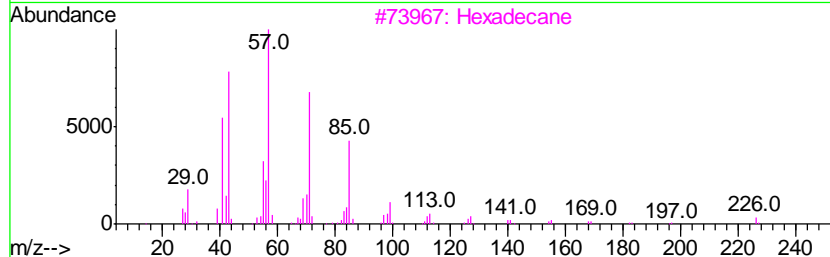
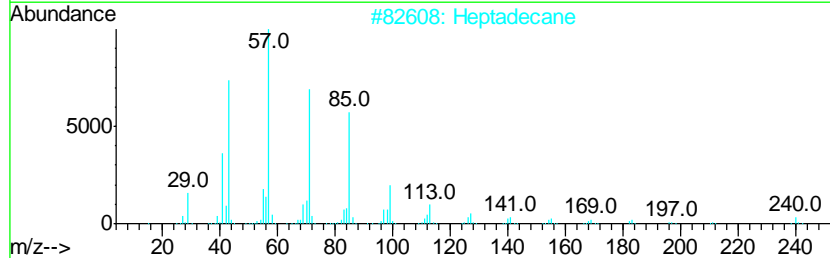
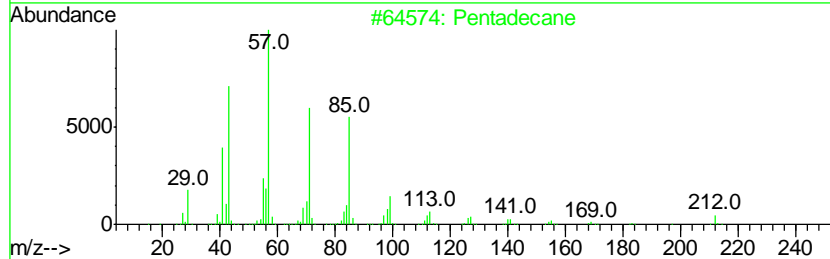
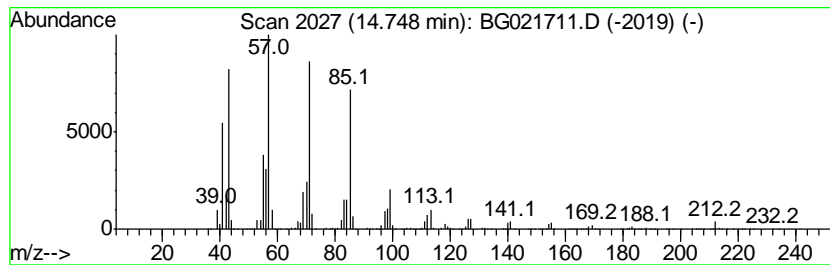
Quant Method : Z:\HPCHEM1\BNA G\METHODS\8270-BG041316.M
 Quant Title : ASP BNA STANDARDS FOR 5 POINT CALIBRATION

TIC Library : C:\DATABASE\NIST02.L
 TIC Integration Parameters: LSCINT.P

 Peak Number 10 Pentadecane Concentration Rank 5

R.T.	EstConc	Area	Relative to ISTD	R.T.
14.75	91.03 ng	19447000	Acenaphthene-d10	14.85

Hit#	of	Tentative ID	MW	MolForm	CAS#	Qual
1	5	Pentadecane	212	C15H32	000629-62-9	95
2		Heptadecane	240	C17H36	000629-78-7	87
3		Hexadecane	226	C16H34	000544-76-3	83
4		Nonadecane	268	C19H40	000629-92-5	80
5		Tridecane	184	C13H28	000629-50-5	72



Data Path : Z:\HPCHEM1\BNA G\DATA\BG041516\
 Data File : BG021711.D
 Acq On : 16 Apr 2016 10:45
 Operator : UM/SJ
 Sample : H2558-07
 Misc :
 ALS Vial : 19 Sample Multiplier: 1

Instrument :
 BNA_G
 ClientSampled :
 SB-20-6-6.5

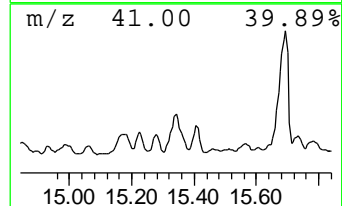
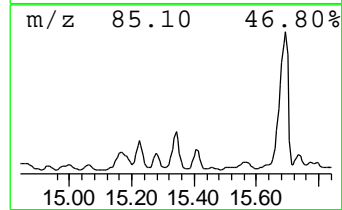
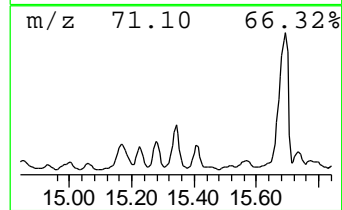
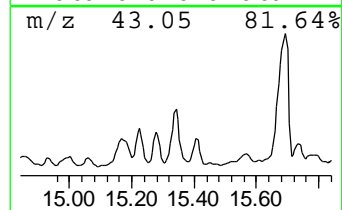
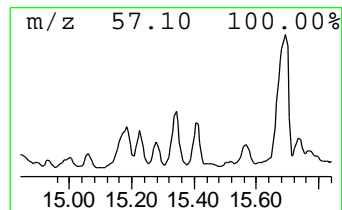
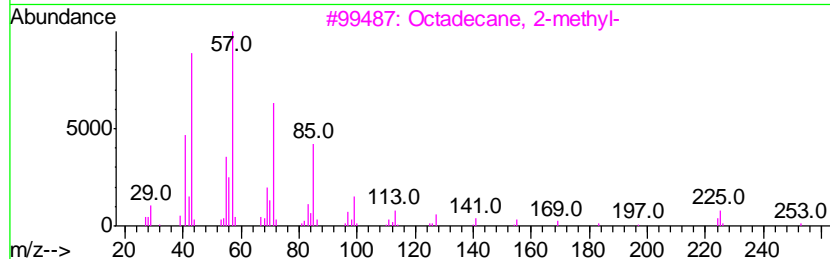
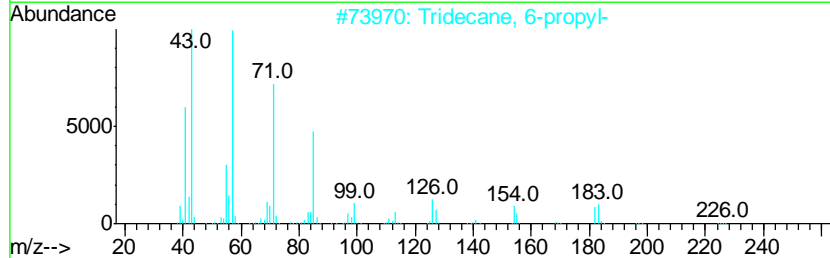
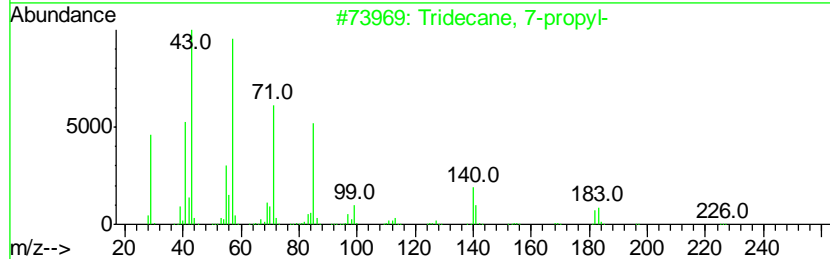
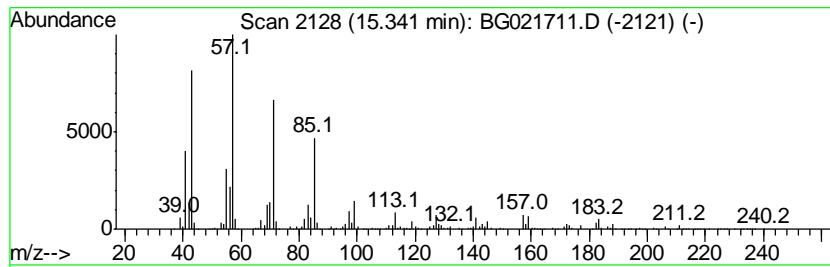
Quant Method : Z:\HPCHEM1\BNA G\METHODS\8270-BG041316.M
 Quant Title : ASP BNA STANDARDS FOR 5 POINT CALIBRATION

TIC Library : C:\DATABASE\NIST02.L
 TIC Integration Parameters: LSCINT.P

 Peak Number 11 Tridecane, 7-propyl- Concentration Rank 16

R.T.	EstConc	Area	Relative to ISTD	R.T.
15.34	37.42 ng	7995030	Acenaphthene-d10	14.85

Hit#	of	Tentative ID	MW	MolForm	CAS#	Qual
1	5	Tridecane, 7-propyl-	226	C16H34	055045-09-5	90
2		Tridecane, 6-propyl-	226	C16H34	055045-10-8	89
3		Octadecane, 2-methyl-	268	C19H40	001560-88-9	87
4		Tetracosane	338	C24H50	000646-31-1	83
5		Pentadecane	212	C15H32	000629-62-9	83



Data Path : Z:\HPCHEM1\BNA G\DATA\BG041516\
 Data File : BG021711.D
 Acq On : 16 Apr 2016 10:45
 Operator : UM/SJ
 Sample : H2558-07
 Misc :
 ALS Vial : 19 Sample Multiplier: 1

Instrument :
 BNA_G
 ClientSampled :
 SB-20-6-6.5

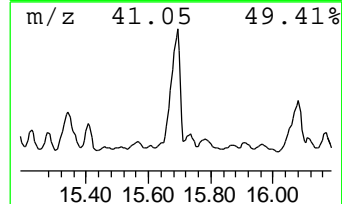
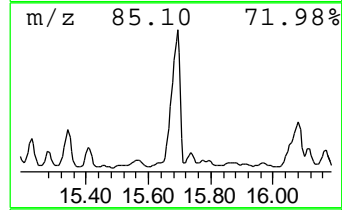
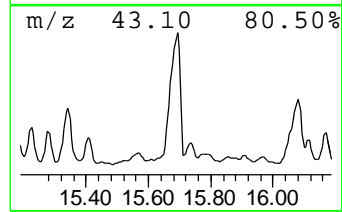
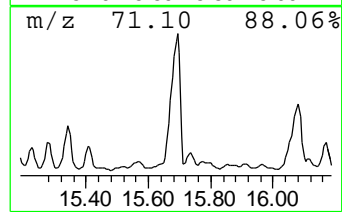
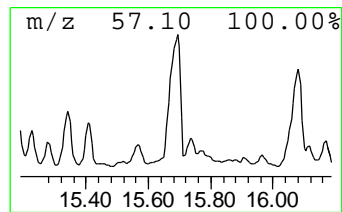
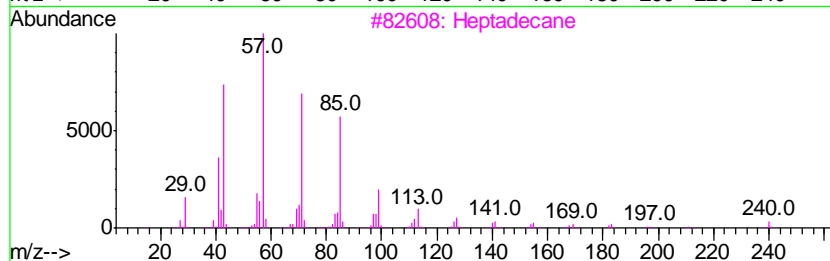
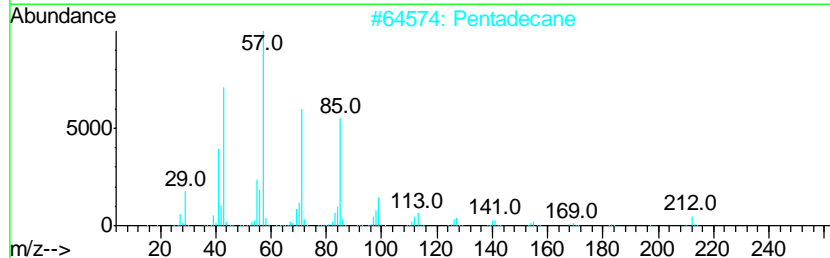
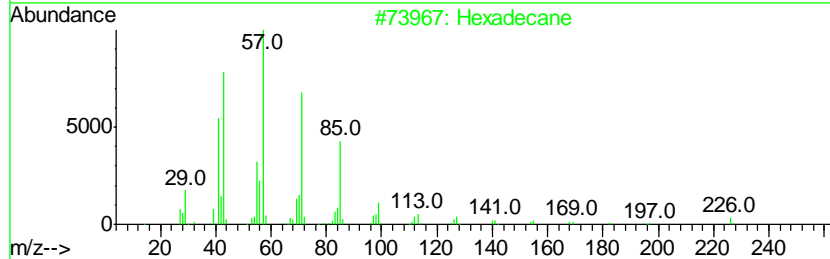
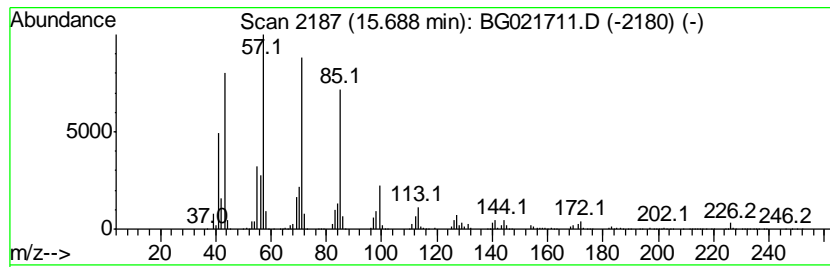
Quant Method : Z:\HPCHEM1\BNA G\METHODS\8270-BG041316.M
 Quant Title : ASP BNA STANDARDS FOR 5 POINT CALIBRATION

TIC Library : C:\DATABASE\NIST02.L
 TIC Integration Parameters: LSCINT.P

 Peak Number 12 Hexadecane Concentration Rank 7

R.T.	EstConc	Area	Relative to ISTD	R.T.
15.69	83.82 ng	17906200	Acenaphthene-d10	14.85

Hit#	of	Tentative ID	MW	MolForm	CAS#	Qual
1	5	Hexadecane	226	C16H34	000544-76-3	96
2		Pentadecane	212	C15H32	000629-62-9	93
3		Heptadecane	240	C17H36	000629-78-7	86
4		Nonadecane	268	C19H40	000629-92-5	83
5		Tetradecane	198	C14H30	000629-59-4	80



Data Path : Z:\HPCHEM1\BNA G\DATA\BG041516\
 Data File : BG021711.D
 Acq On : 16 Apr 2016 10:45
 Operator : UM/SJ
 Sample : H2558-07
 Misc :
 ALS Vial : 19 Sample Multiplier: 1

Instrument :
 BNA_G
 ClientSampleID :
 SB-20-6-6.5

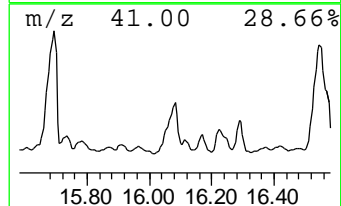
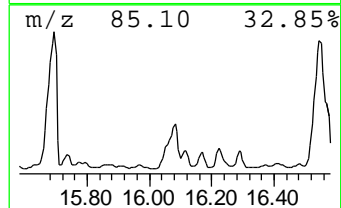
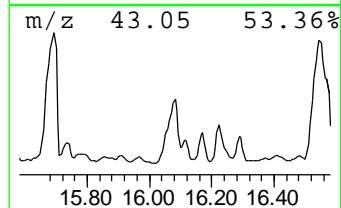
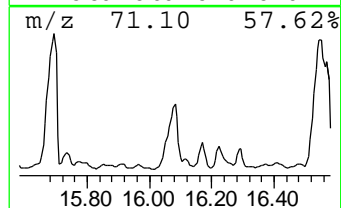
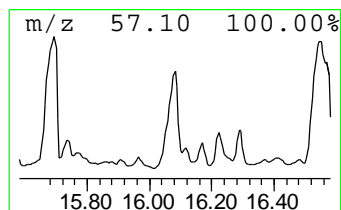
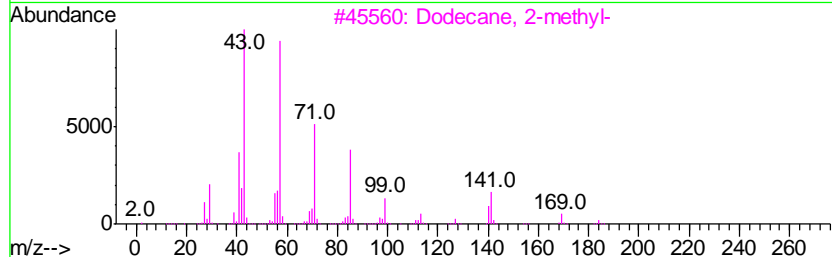
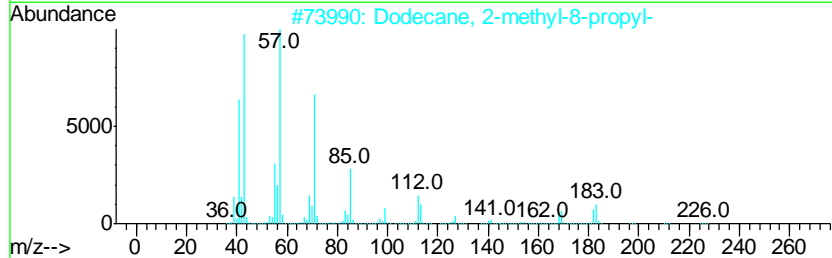
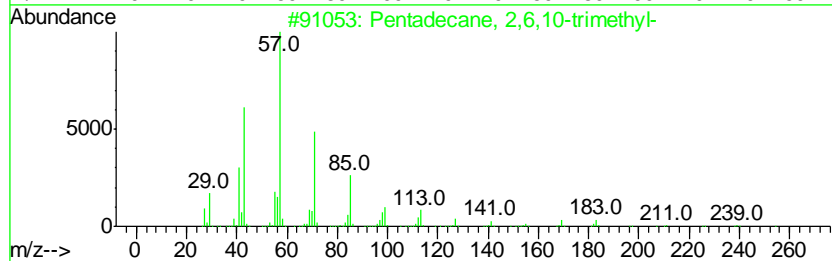
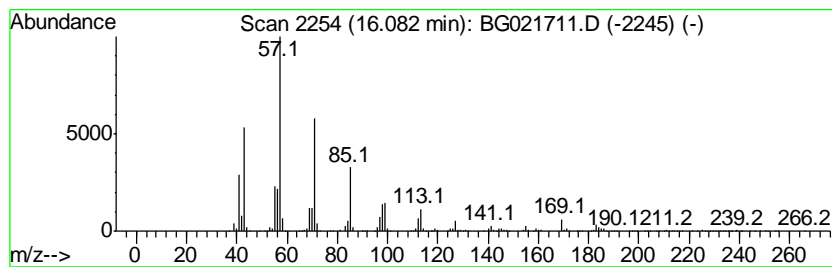
Quant Method : Z:\HPCHEM1\BNA G\METHODS\8270-BG041316.M
 Quant Title : ASP BNA STANDARDS FOR 5 POINT CALIBRATION

TIC Library : C:\DATABASE\NIST02.L
 TIC Integration Parameters: LSCINT.P

 Peak Number 13 Pentadecane, 2,6,10-trimethyl- Concentration Rank 11

R.T.	EstConc	Area	Relative to ISTD	R.T.
16.08	47.54 ng	10156700	Acenaphthene-d10	14.85

Hit#	of	Tentative ID	MW	MolForm	CAS#	Qual
1	5	Pentadecane, 2,6,10-trimethyl-	254	C18H38	003892-00-0	93
2		Dodecane, 2-methyl-8-propyl-	226	C16H34	055045-07-3	86
3		Dodecane, 2-methyl-	184	C13H28	001560-97-0	80
4		Tridecane, 5-propyl-	226	C16H34	055045-11-9	74
5		Tetracosane	338	C24H50	000646-31-1	72



Data Path : Z:\HPCHEM1\BNA G\DATA\BG041516\
 Data File : BG021711.D
 Acq On : 16 Apr 2016 10:45
 Operator : UM/SJ
 Sample : H2558-07
 Misc :
 ALS Vial : 19 Sample Multiplier: 1

Instrument :
 BNA_G
 ClientSampled :
 SB-20-6-6.5

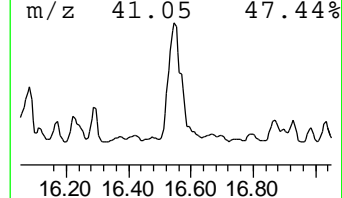
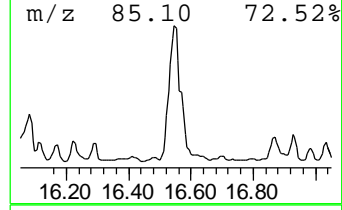
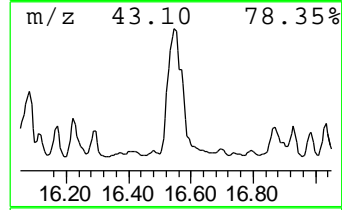
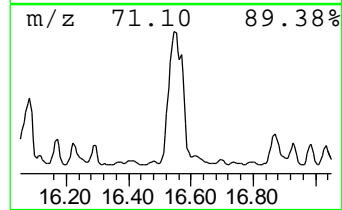
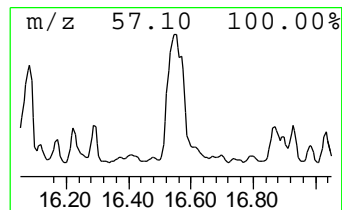
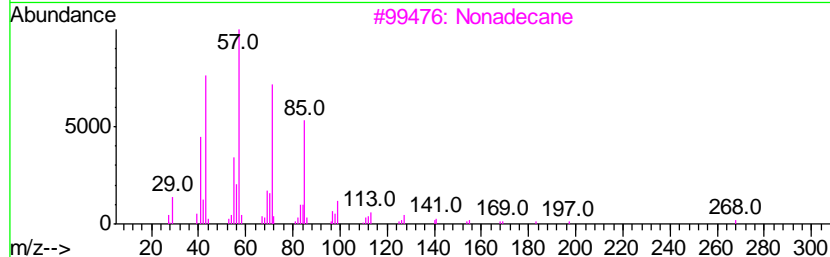
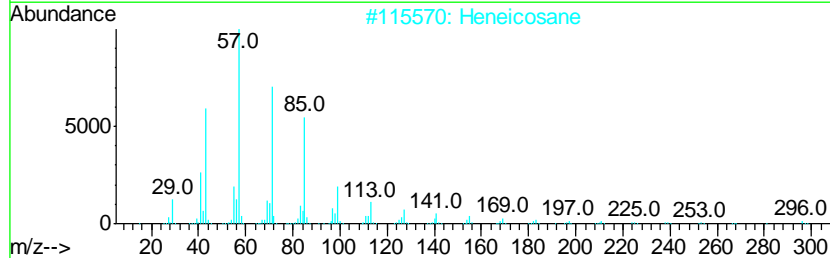
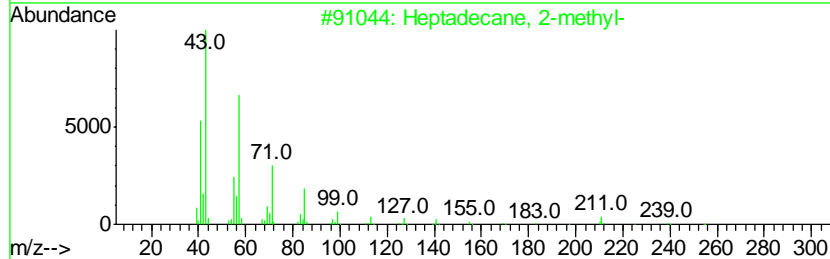
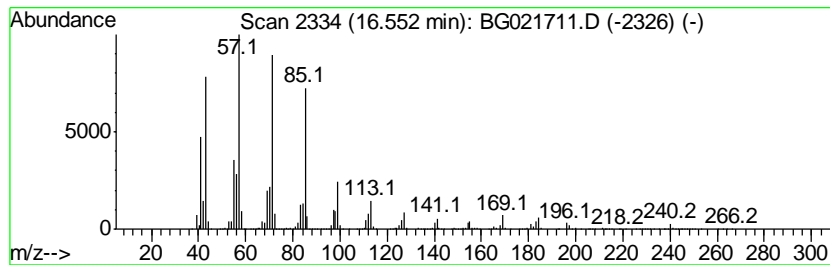
Quant Method : Z:\HPCHEM1\BNA G\METHODS\8270-BG041316.M
 Quant Title : ASP BNA STANDARDS FOR 5 POINT CALIBRATION

TIC Library : C:\DATABASE\NIST02.L
 TIC Integration Parameters: LSCINT.P

 Peak Number 14 Heptadecane, 2-methyl- Concentration Rank 1

R.T.	EstConc	Area	Relative to ISTD	R.T.
16.55	194.67 ng	26397600	Phenanthrene-d10	17.59

Hit#	of	Tentative ID	MW	MolForm	CAS#	Qual
1	5	Heptadecane, 2-methyl-	254	C18H38	001560-89-0	91
2		Heneicosane	296	C21H44	000629-94-7	91
3		Nonadecane	268	C19H40	000629-92-5	90
4		Hexadecane	226	C16H34	000544-76-3	90
5		Heptadecane	240	C17H36	000629-78-7	87



Data Path : Z:\HPCHEM1\BNA G\DATA\BG041516\
 Data File : BG021711.D
 Acq On : 16 Apr 2016 10:45
 Operator : UM/SJ
 Sample : H2558-07
 Misc :
 ALS Vial : 19 Sample Multiplier: 1

Instrument :
 BNA_G
 Client Sampled :
 SB-20-6-6.5

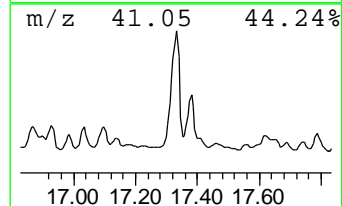
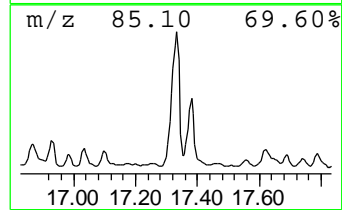
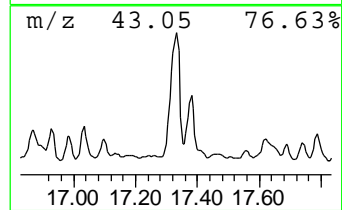
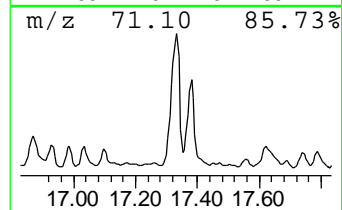
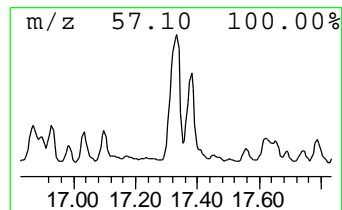
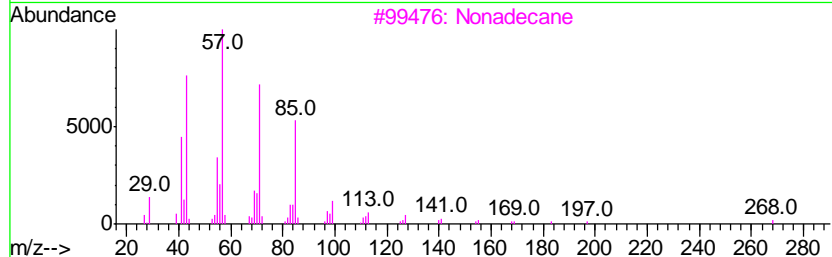
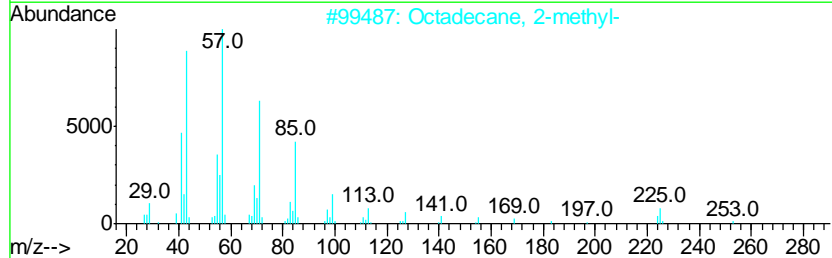
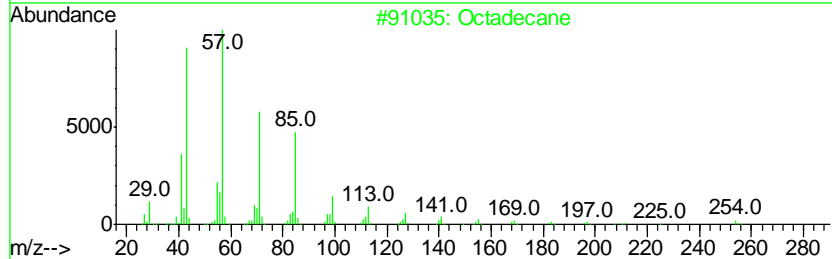
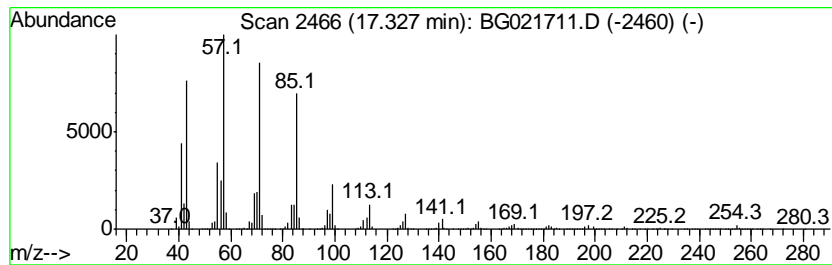
Quant Method : Z:\HPCHEM1\BNA G\METHODS\8270-BG041316.M
 Quant Title : ASP BNA STANDARDS FOR 5 POINT CALIBRATION

TIC Library : C:\DATABASE\NIST02.L
 TIC Integration Parameters: LSCINT.P

 Peak Number 15 Octadecane Concentration Rank 3

R.T.	EstConc	Area	Relative to ISTD	R.T.
17.33	112.79 ng	15294900	Phenanthrene-d10	17.59

Hit#	of	Tentative ID	MW	MolForm	CAS#	Qual
1	5	Octadecane	254	C18H38	000593-45-3	94
2		Octadecane, 2-methyl-	268	C19H40	001560-88-9	91
3		Nonadecane	268	C19H40	000629-92-5	90
4		Heneicosane	296	C21H44	000629-94-7	87
5		Heptadecane	240	C17H36	000629-78-7	87



Data Path : Z:\HPCHEM1\BNA G\DATA\BG041516\
 Data File : BG021711.D
 Acq On : 16 Apr 2016 10:45
 Operator : UM/SJ
 Sample : H2558-07
 Misc :
 ALS Vial : 19 Sample Multiplier: 1

Instrument :
 BNA_G
 ClientSampleID :
 SB-20-6-6.5

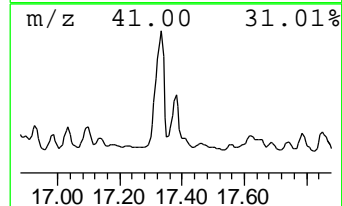
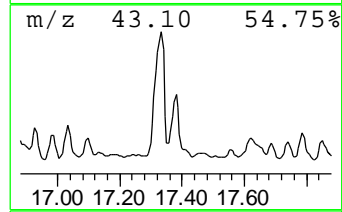
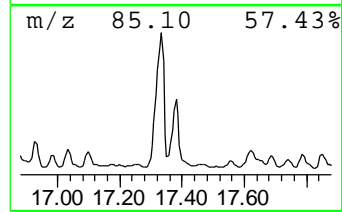
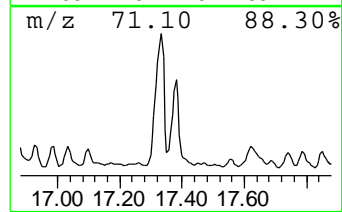
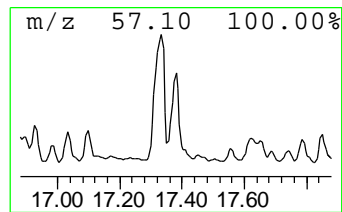
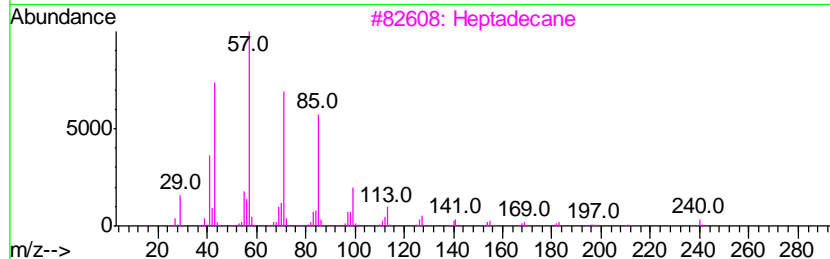
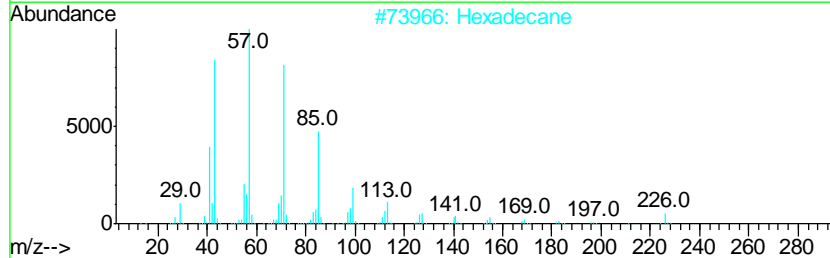
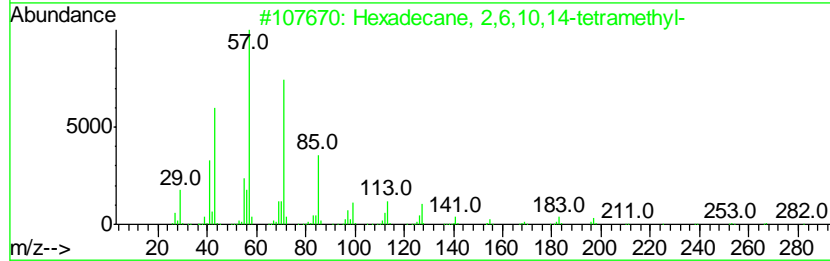
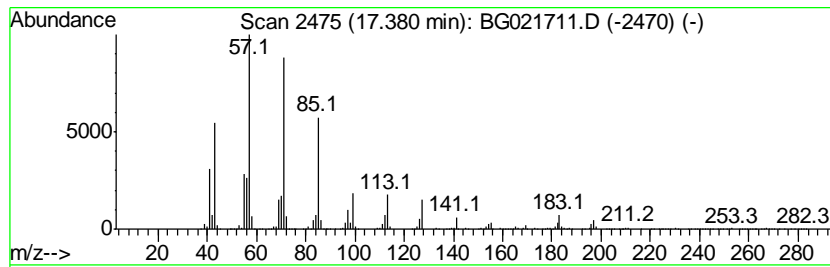
Quant Method : Z:\HPCHEM1\BNA G\METHODS\8270-BG041316.M
 Quant Title : ASP BNA STANDARDS FOR 5 POINT CALIBRATION

TIC Library : C:\DATABASE\NIST02.L
 TIC Integration Parameters: LSCINT.P

 Peak Number 16 Hexadecane, 2,6,10,14-tetra... Concentration Rank 13

R.T.	EstConc	Area	Relative to ISTD	R.T.
17.38	44.60 ng	6048050	Phenanthrene-d10	17.59

Hit#	of	Tentative ID	MW	MolForm	CAS#	Qual
1	5	Hexadecane, 2,6,10,14-tetramethyl-	282	C20H42	000638-36-8	90
2		Hexadecane	226	C16H34	000544-76-3	86
3		Heptadecane	240	C17H36	000629-78-7	86
4		2-Bromo dodecane	248	C12H25Br	013187-99-0	83
5		Pentadecane, 2,6,10-trimethyl-	254	C18H38	003892-00-0	80



Data Path : Z:\HPCHEM1\BNA G\DATA\BG041516\
 Data File : BG021711.D
 Acq On : 16 Apr 2016 10:45
 Operator : UM/SJ
 Sample : H2558-07
 Misc :
 ALS Vial : 19 Sample Multiplier: 1

Instrument :
 BNA_G
 ClientSampleID :
 SB-20-6-6.5

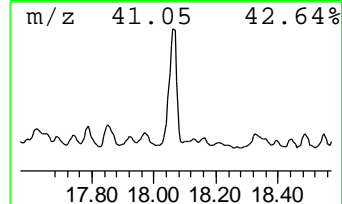
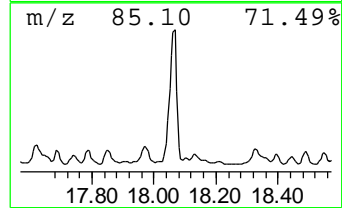
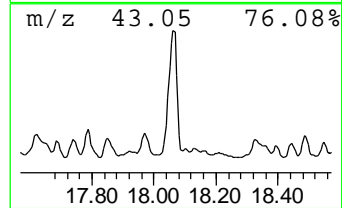
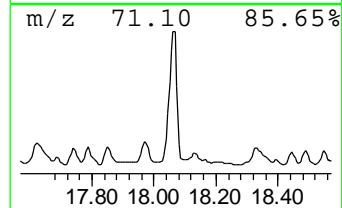
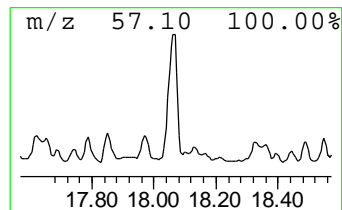
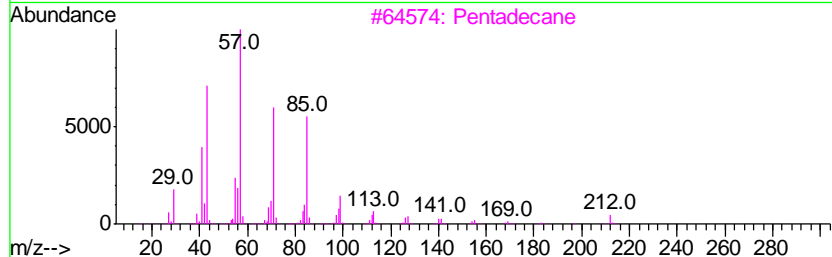
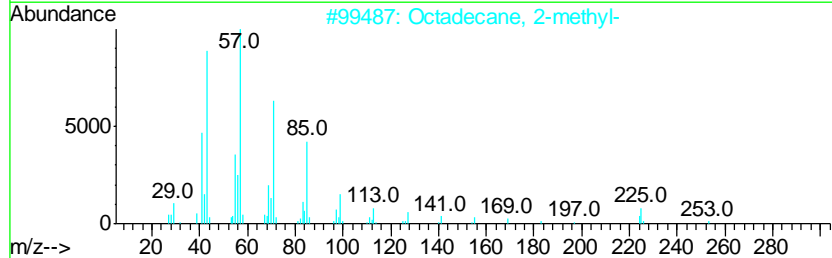
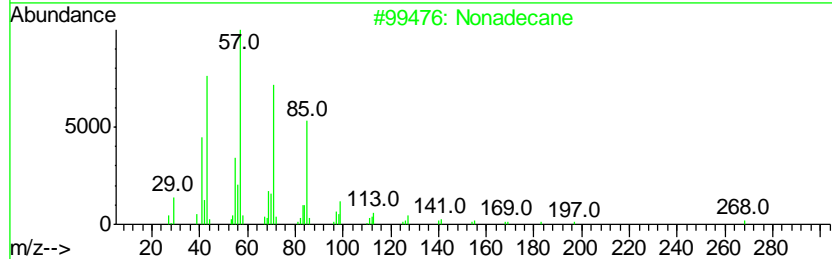
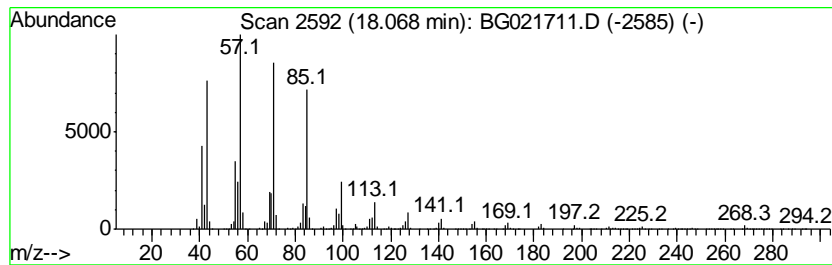
Quant Method : Z:\HPCHEM1\BNA G\METHODS\8270-BG041316.M
 Quant Title : ASP BNA STANDARDS FOR 5 POINT CALIBRATION

TIC Library : C:\DATABASE\NIST02.L
 TIC Integration Parameters: LSCINT.P

 Peak Number 17 Nonadecane Concentration Rank 4

R.T.	EstConc	Area	Relative to ISTD	R.T.
18.07	103.80 ng	14075400	Phenanthrene-d10	17.59

Hit#	of	Tentative ID	MW	MolForm	CAS#	Qual
1	5	Nonadecane	268	C19H40	000629-92-5	96
2		Octadecane, 2-methyl-	268	C19H40	001560-88-9	91
3		Pentadecane	212	C15H32	000629-62-9	91
4		Heneicosane	296	C21H44	000629-94-7	91
5		10-Methylnonadecane	282	C20H42	056862-62-5	91



Data Path : Z:\HPCHEM1\BNA G\DATA\BG041516\
 Data File : BG021711.D
 Acq On : 16 Apr 2016 10:45
 Operator : UM/SJ
 Sample : H2558-07
 Misc :
 ALS Vial : 19 Sample Multiplier: 1

Instrument :
 BNA_G
 ClientSampled :
 SB-20-6-6.5

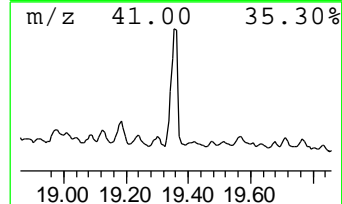
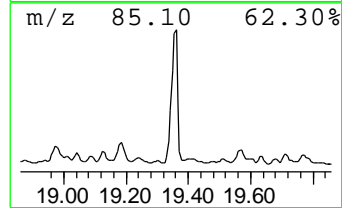
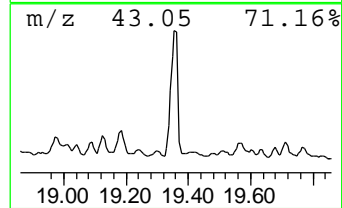
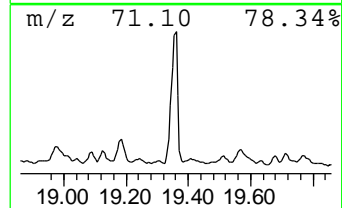
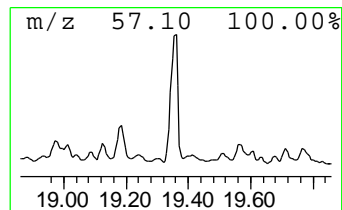
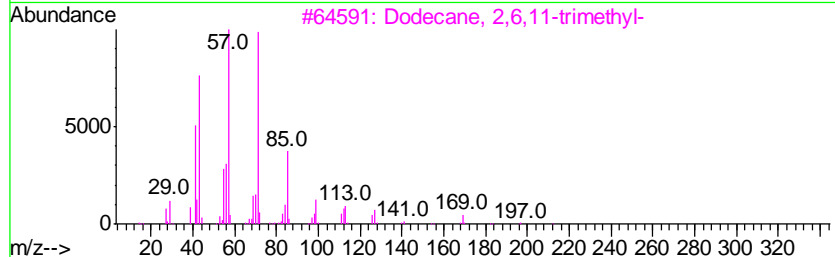
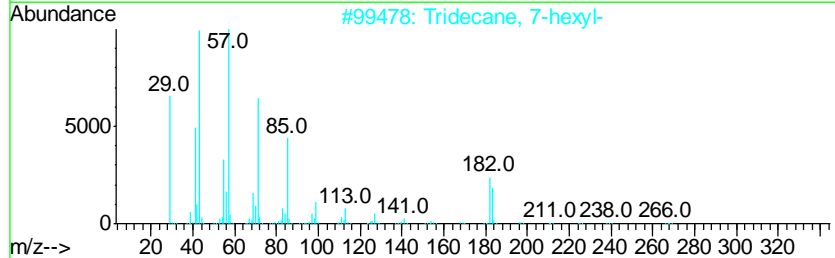
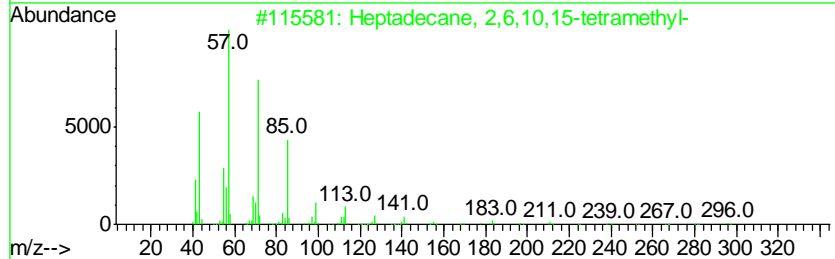
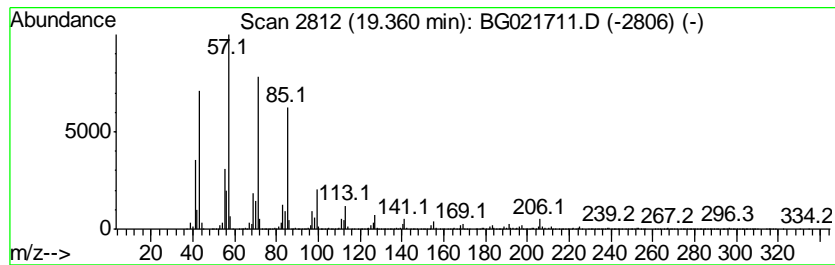
Quant Method : Z:\HPCHEM1\BNA G\METHODS\8270-BG041316.M
 Quant Title : ASP BNA STANDARDS FOR 5 POINT CALIBRATION

TIC Library : C:\DATABASE\NIST02.L
 TIC Integration Parameters: LSCINT.P

 Peak Number 19 Heptadecane, 2,6,10,15-tetr... Concentration Rank 8

R.T.	EstConc	Area	Relative to ISTD	R.T.
19.36	71.99 ng	9762160	Phenanthrene-d10	17.59

Hit#	of	Tentative ID	MW	MolForm	CAS#	Qual
1	5	Heptadecane, 2,6,10,15-tetramethyl-	296	C21H44	054833-48-6	97
2		Tridecane, 7-hexyl-	268	C19H40	007225-66-3	93
3		Dodecane, 2,6,11-trimethyl-	212	C15H32	031295-56-4	91
4		Octadecane	254	C18H38	000593-45-3	91
5		Heneicosane	296	C21H44	000629-94-7	90



Data Path : Z:\HPCHEM1\BNA G\DATA\BG041516\
 Data File : BG021711.D
 Acq On : 16 Apr 2016 10:45
 Operator : UM/SJ
 Sample : H2558-07
 Misc :
 ALS Vial : 19 Sample Multiplier: 1

Instrument :
 BNA_G
 ClientSampled :
 SB-20-6-6.5

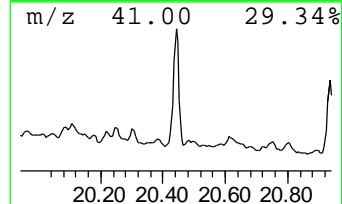
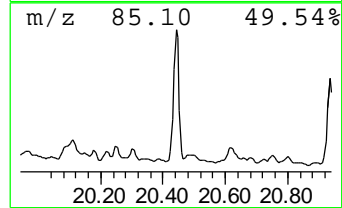
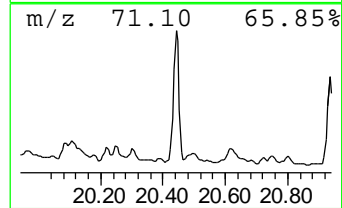
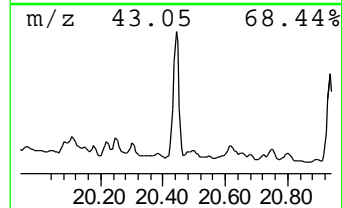
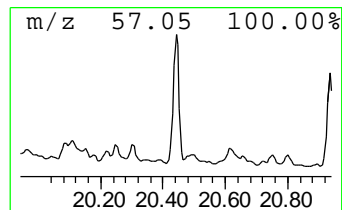
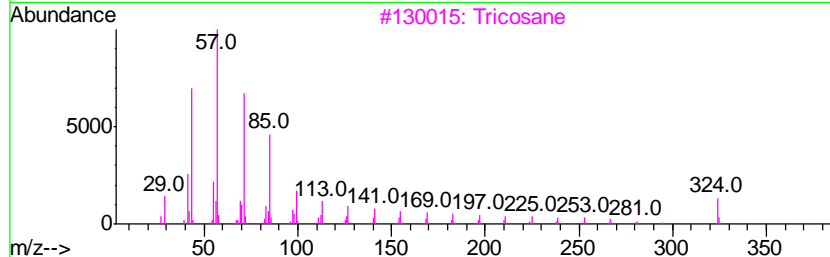
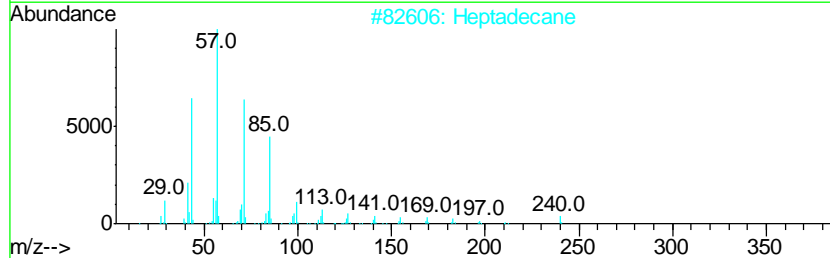
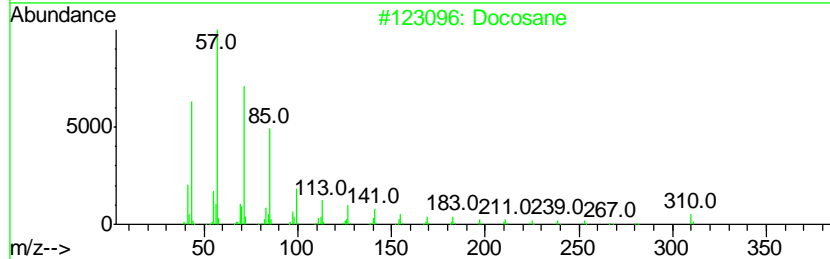
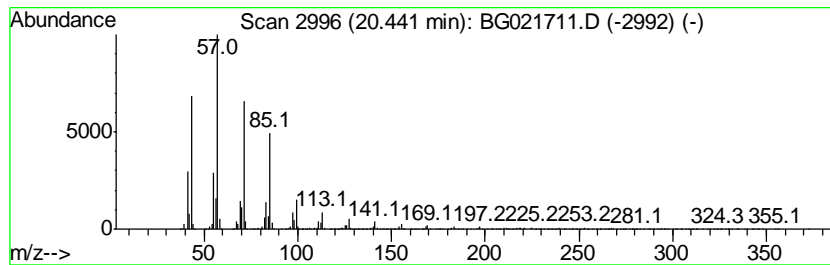
Quant Method : Z:\HPCHEM1\BNA G\METHODS\8270-BG041316.M
 Quant Title : ASP BNA STANDARDS FOR 5 POINT CALIBRATION

TIC Library : C:\DATABASE\NIST02.L
 TIC Integration Parameters: LSCINT.P

 Peak Number 20 Docosane Concentration Rank 17

R.T.	EstConc	Area	Relative to ISTD	R.T.
20.44	33.49 ng	4951120	Chrysene-d12	21.84

Hit#	of	Tentative ID	MW	MolForm	CAS#	Qual
1	5	Docosane	310	C22H46	000629-97-0	96
2		Heptadecane	240	C17H36	000629-78-7	94
3		Tricosane	324	C23H48	000638-67-5	93
4		Tetracosane	338	C24H50	000646-31-1	93
5		Triacotane	422	C30H62	000638-68-6	91



Data Path : Z:\HPCHEM1\BNA_G\DATA\BG041516\
 Data File : BG021711.D
 Acq On : 16 Apr 2016 10:45
 Operator : UM/SJ
 Sample : H2558-07
 Misc :
 ALS Vial : 19 Sample Multiplier: 1

Instrument :
 BNA_G
 ClientSampleId :
 SB-20-6-6.5

Quant Method : Z:\HPCHEM1\BNA_G\METHODS\8270-BG041316.M
 Quant Title : ASP BNA STANDARDS FOR 5 POINT CALIBRATION

TIC Library : C:\DATABASE\NIST02.L
 TIC Integration Parameters: LSCINT.P

TIC Top Hit name	RT	EstConc	Units	Response	--Internal Standard--			
					#	RT	Resp	Conc
unknown3.10	3.10	28.3	ng	3843570	1	8.22	2715520	20.0
Decane	7.84	52.3	ng	7094010	1	8.22	2715520	20.0
Benzene, 1,2-diet...	8.87	47.2	ng	6406410	1	8.22	2715520	20.0
Benzene, 1-ethyl-...	9.34	42.7	ng	5799310	1	8.22	2715520	20.0
Tetradecane	9.47	115.7	ng	15707200	1	8.22	2715520	20.0
Benzene, 1,3-diet...	9.59	41.0	ng	5560840	1	8.22	2715520	20.0
Dodecane, 2,7,10-...	13.38	29.3	ng	6254710	3	14.85	4272650	20.0
2,5,8-Trimethyl-1...	14.36	31.6	ng	6752600	3	14.85	4272650	20.0
Pentadecane	14.75	91.0	ng	19447000	3	14.85	4272650	20.0
Tridecane, 7-propyl-	15.34	37.4	ng	7995030	3	14.85	4272650	20.0
Hexadecane	15.69	83.8	ng	17906200	3	14.85	4272650	20.0
Pentadecane, 2,6,...	16.08	47.5	ng	10156700	3	14.85	4272650	20.0
Heptadecane, 2-me...	16.55	194.7	ng	26397600	4	17.59	2712050	20.0
Octadecane	17.33	112.8	ng	15294900	4	17.59	2712050	20.0
Hexadecane, 2,6,1...	17.38	44.6	ng	6048050	4	17.59	2712050	20.0
Nonadecane	18.07	103.8	ng	14075400	4	17.59	2712050	20.0
Heptadecane, 2,6,...	19.36	72.0	ng	9762160	4	17.59	2712050	20.0
Docosane	20.44	33.5	ng	4951120	5	21.84	2956740	20.0