

Data Path : Z:\HPCHEM1\BNA_G\DATA\BG041715\
 Data File : BG016501.D
 Acq On : 17 Apr 2015 22:45
 Operator : TP/IZ
 Sample : G1880-08
 Misc :
 ALS Vial : 16 Sample Multiplier: 1

Instrument :
 BNA_G
 ClientSampleID :
 S5-1-4

Integration Parameters: rteint.p
 Integrator: RTE
 Smoothing : ON Filtering: 5
 Sampling : 1 Min Area: 3 % of largest Peak
 Start Thrs: 0.2 Max Peaks: 100
 Stop Thrs : 0 Peak Location: TOP

If leading or trailing edge < 100 prefer < Baseline drop else tangent >
 Peak separation: 5

Method : Z:\HPCHEM1\BNA_G\METHODS\8270-BG040615.M
 Title : ASP BNA STANDARDS FOR 5 POINT CALIBRATION

Signal : TIC

peak #	R.T. min	first scan	max scan	last scan	PK TY	peak height	corr. area	corr. % max.	% of total
1	2.753	6	11	20	rVB	107037	183883	6.89%	1.090%
2	2.829	20	24	30	rBV	70953	90752	3.40%	0.538%
3	4.774	349	355	364	rVB	122265	166637	6.25%	0.988%
4	5.250	430	436	446	rBV	799727	1121365	42.03%	6.648%
5	6.848	701	708	719	rBV	862496	1297190	48.62%	7.690%
6	7.194	760	767	777	rBV	851496	1294753	48.53%	7.675%
7	7.659	838	846	853	rBV	262604	396054	14.84%	2.348%
8	7.976	893	900	909	rVB	619570	965734	36.19%	5.725%
9	8.816	1035	1043	1057	rBV	484895	764420	28.65%	4.532%
10	10.444	1313	1320	1332	rVB	367558	596047	22.34%	3.533%
11	12.923	1735	1742	1756	rBV	1243254	1869981	70.08%	11.085%
12	13.763	1880	1885	1894	rBV	29107	45493	1.71%	0.270%
13	14.304	1970	1977	1992	rVB2	524503	817139	30.63%	4.844%
14	15.126	2109	2117	2120	rBV	23660	32272	1.21%	0.191%
15	15.790	2224	2230	2244	rBV	774894	1105654	41.44%	6.554%
16	16.014	2264	2268	2276	rBV2	17701	29694	1.11%	0.176%
17	17.042	2437	2443	2449	rBV2	689243	1002031	37.55%	5.940%
18	19.104	2788	2794	2800	rBV	31254	44269	1.66%	0.262%
19	19.468	2846	2856	2862	rBV2	31374	60979	2.29%	0.361%
20	19.674	2885	2891	2900	rBV	2180966	2668183	100.00%	15.817%
21	20.937	3102	3106	3115	rBV	99621	143177	5.37%	0.849%
22	21.225	3148	3155	3160	rBV	902745	1112295	41.69%	6.594%
23	23.452	3527	3534	3547	rVB2	565957	1060859	39.76%	6.289%

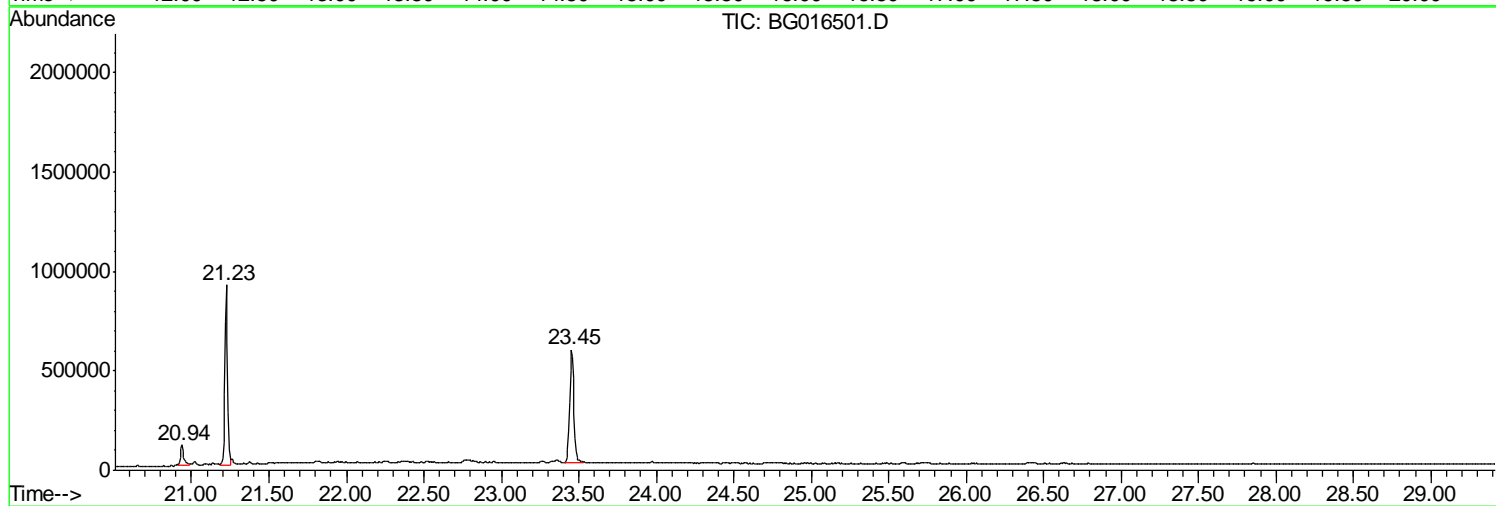
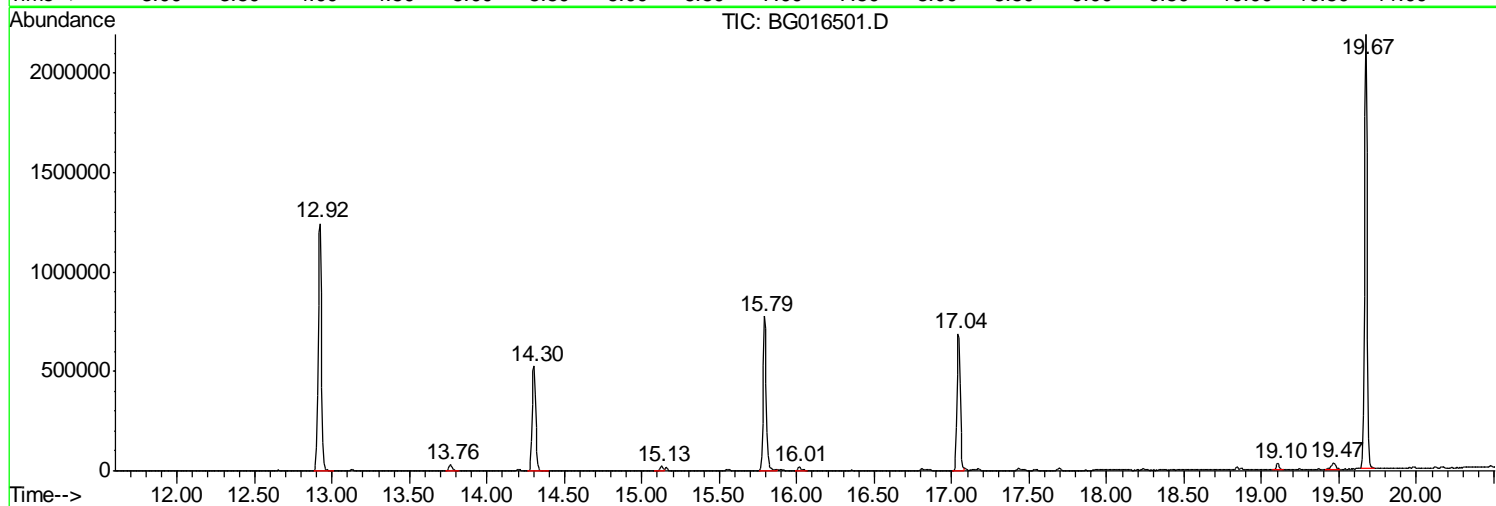
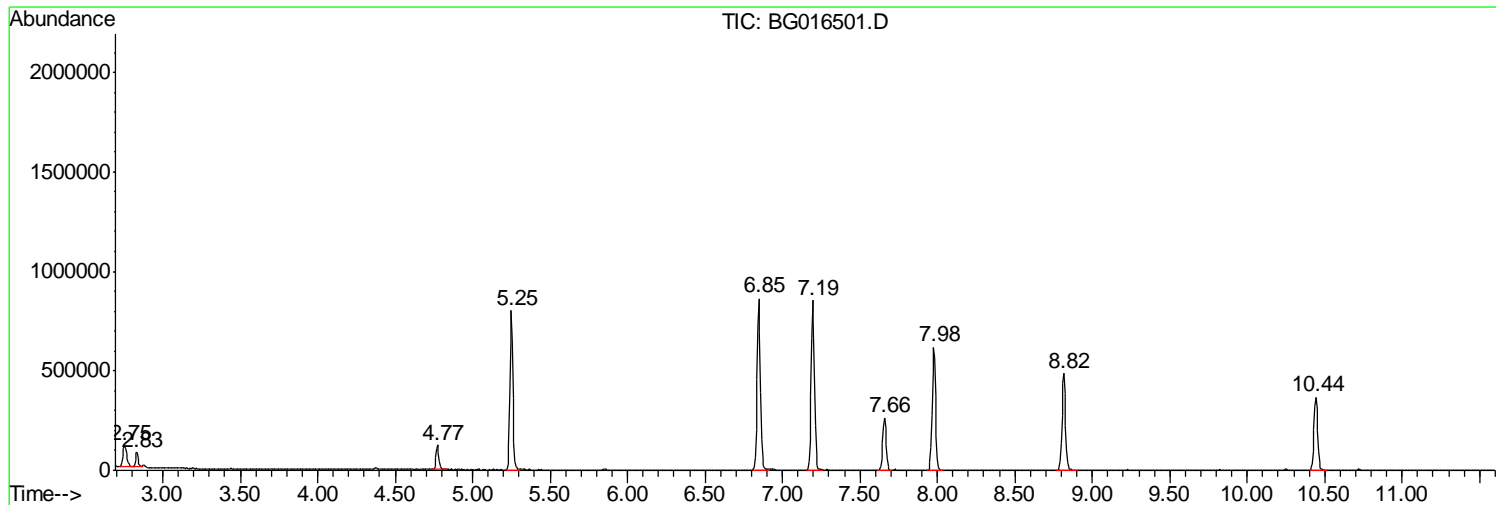
Sum of corrected areas: 16868861

Data Path : Z:\HPCHEM1\BNA_G\DATA\BG041715\
Data File : BG016501.D
Acq On : 17 Apr 2015 22:45
Operator : TP/IZ
Sample : G1880-08
Misc :
ALS Vial : 16 Sample Multiplier: 1

Instrument :
BNA_G
ClientSampled :
S5-1-4

Quant Method : Z:\HPCHEM1\BNA_G\METHODS\8270-BG040615.M
Quant Title : ASP BNA STANDARDS FOR 5 POINT CALIBRATION

TIC Library : C:\DATABASE\NIST02.L
TIC Integration Parameters: LSCINT.P



Data Path : Z:\HPCHEM1\BNA_G\DATA\BG041715\
 Data File : BG016501.D
 Acq On : 17 Apr 2015 22:45
 Operator : TP/IZ
 Sample : G1880-08
 Misc :
 ALS Vial : 16 Sample Multiplier: 1

Instrument :
 BNA_G
 ClientSampled :
 S5-1-4

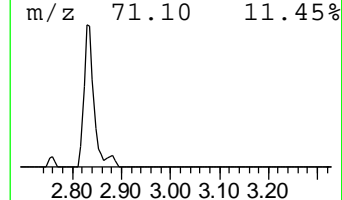
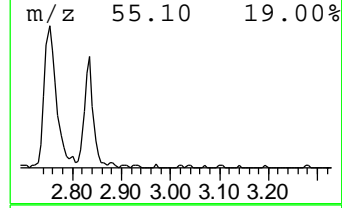
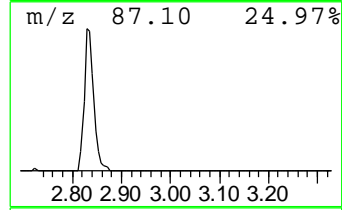
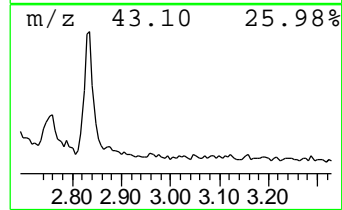
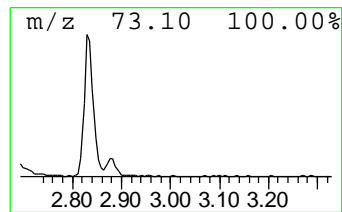
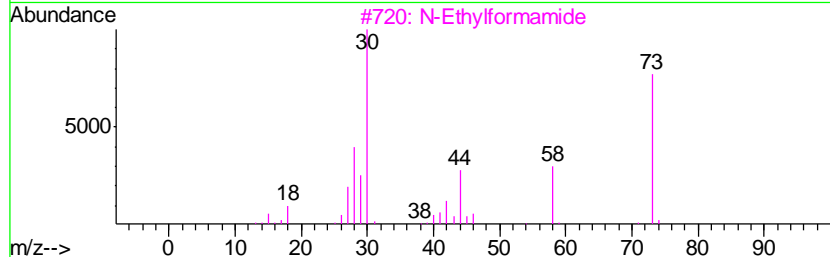
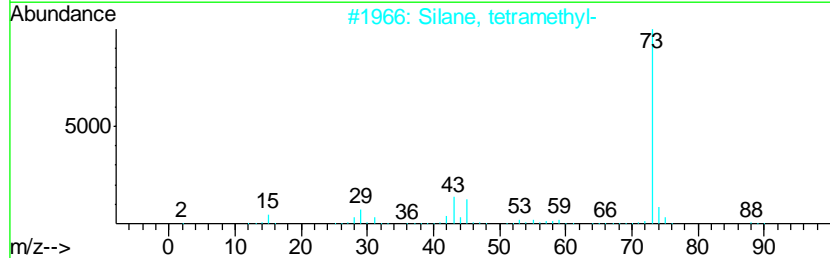
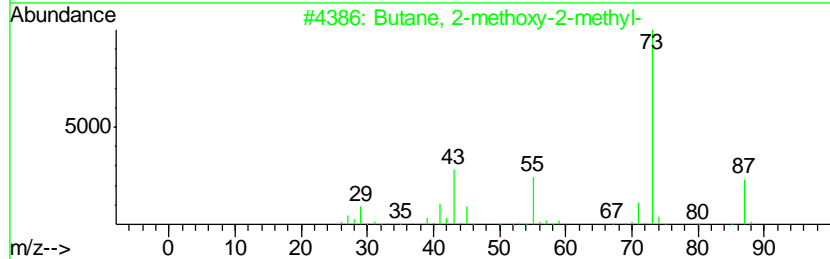
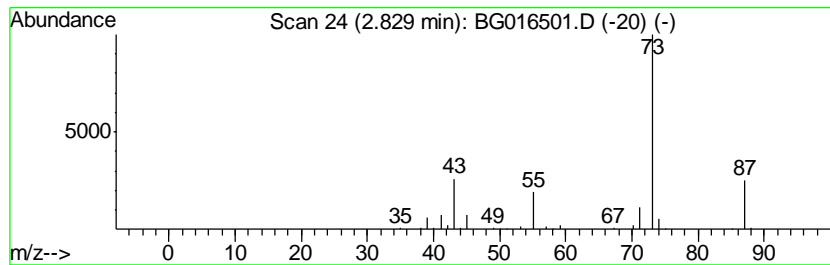
Quant Method : Z:\HPCHEM1\BNA_G\METHODS\8270-BG040615.M
 Quant Title : ASP BNA STANDARDS FOR 5 POINT CALIBRATION

TIC Library : C:\DATABASE\NIST02.L
 TIC Integration Parameters: LSCINT.P

 Peak Number 2 Butane, 2-methoxy-2-methyl- Concentration Rank 5

R.T.	EstConc	Area	Relative to ISTD	R.T.
2.83	4.58 ng	90752	1,4-Dichlorobenzene-d4	7.66

Hit#	of	Tentative ID	MW	MolForm	CAS#	Qual
1	5	Butane, 2-methoxy-2-methyl-	102	C6H14O	000994-05-8	50
2		Silane, tetramethyl-	88	C4H12Si	000075-76-3	9
3		N-Ethylformamide	73	C3H7NO	000627-45-2	9
4		3-Pentanol, 2,4-dimethyl-	116	C7H16O	000600-36-2	9
5		Pentane, 3-methoxy-	102	C6H14O	036839-67-5	9



Data Path : Z:\HPCHEM1\BNA_G\DATA\BG041715\
 Data File : BG016501.D
 Acq On : 17 Apr 2015 22:45
 Operator : TP/IZ
 Sample : G1880-08
 Misc :
 ALS Vial : 16 Sample Multiplier: 1

Instrument :
 BNA_G
 ClientSampled :
 S5-1-4

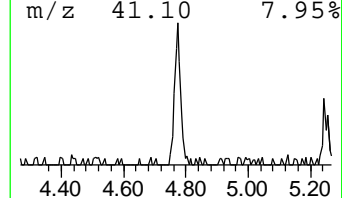
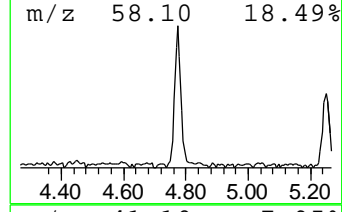
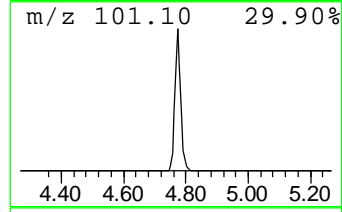
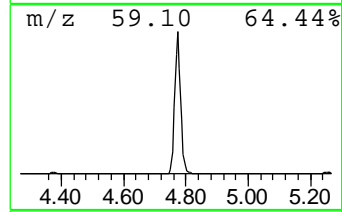
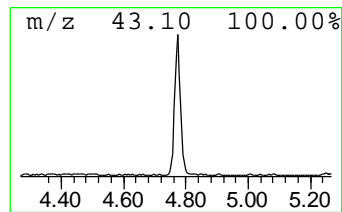
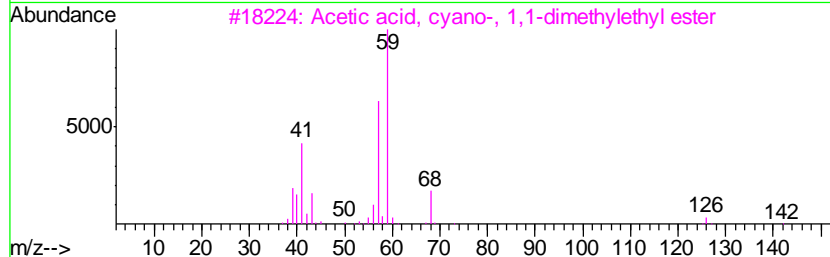
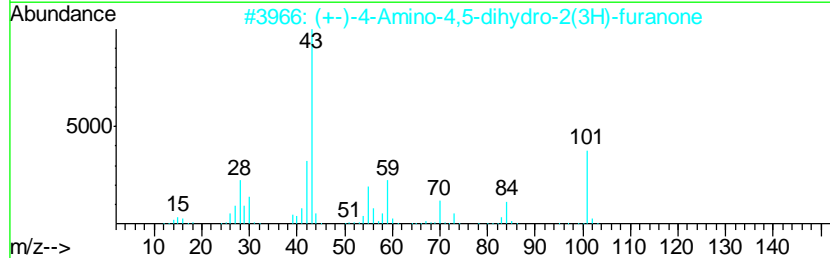
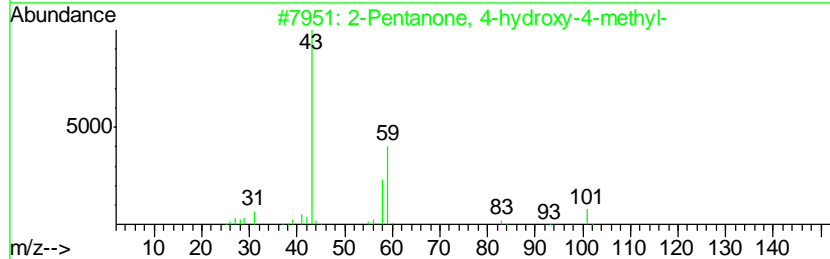
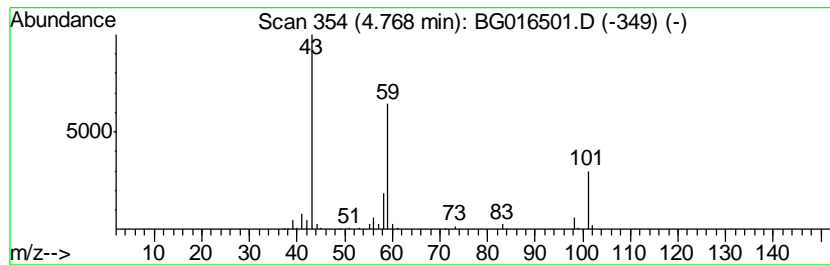
Quant Method : Z:\HPCHEM1\BNA_G\METHODS\8270-BG040615.M
 Quant Title : ASP BNA STANDARDS FOR 5 POINT CALIBRATION

TIC Library : C:\DATABASE\NIST02.L
 TIC Integration Parameters: LSCINT.P

 Peak Number 3 2-Pentanone, 4-hydroxy-4-me... Concentration Rank 4

R.T.	EstConc	Area	Relative to ISTD	R.T.
4.77	8.41 ng	166637	1,4-Dichlorobenzene-d4	7.66

Hit#	of	Tentative ID	MW	MolForm	CAS#	Qual
1	5	2-Pentanone, 4-hydroxy-4-methyl-	116	C6H12O2	000123-42-2	56
2		(+)-4-Amino-4,5-dihydro-2(3H)-f...	101	C4H7NO2	016504-58-8	43
3		Acetic acid, cyano-, 1,1-dimethy...	141	C7H11NO2	001116-98-9	17
4		Butane, 1-ethoxy-	102	C6H14O	000628-81-9	9
5		Morpholine, 4-methyl-	101	C5H11NO	000109-02-4	9



Data Path : Z:\HPCHEM1\BNA_G\DATA\BG041715\
 Data File : BG016501.D
 Acq On : 17 Apr 2015 22:45
 Operator : TP/IZ
 Sample : G1880-08
 Misc :
 ALS Vial : 16 Sample Multiplier: 1

Instrument :
 BNA_G
 ClientSampled :
 S5-1-4

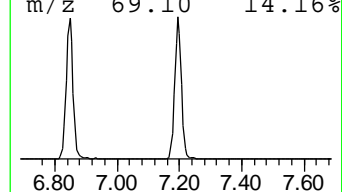
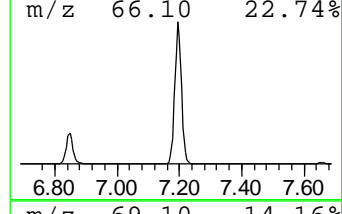
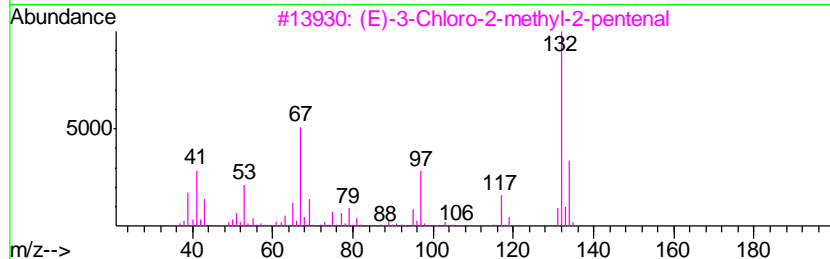
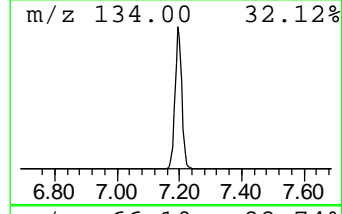
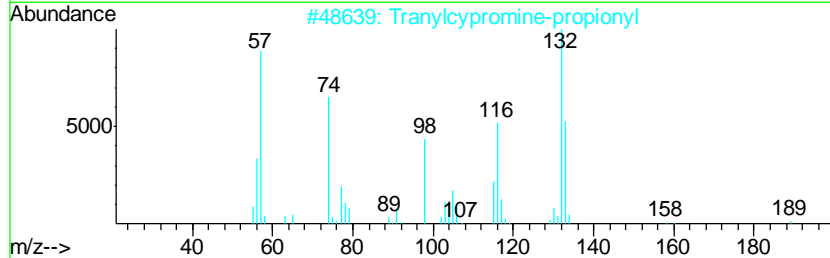
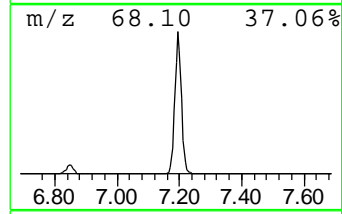
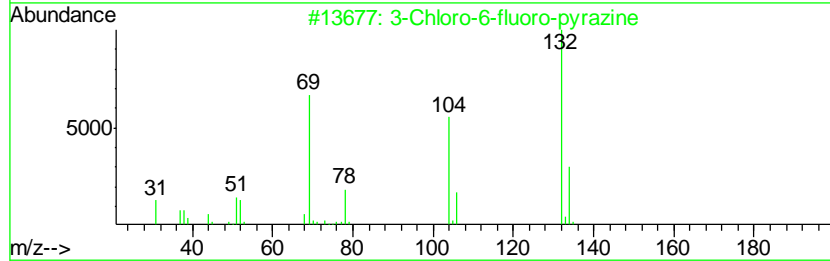
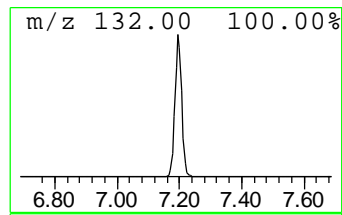
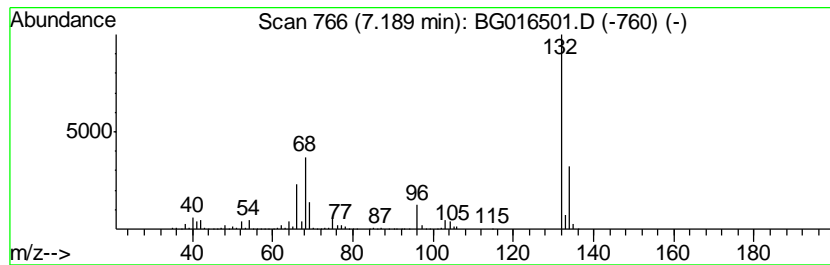
Quant Method : Z:\HPCHEM1\BNA_G\METHODS\8270-BG040615.M
 Quant Title : ASP BNA STANDARDS FOR 5 POINT CALIBRATION

TIC Library : C:\DATABASE\NIST02.L
 TIC Integration Parameters: LSCINT.P

 Peak Number 4 unknown7.19 Concentration Rank 1

R.T.	EstConc	Area	Relative to ISTD	R.T.
7.19	65.38 ng	1294750	1,4-Dichlorobenzene-d4	7.66

Hit#	of	Tentative ID	MW	MolForm	CAS#	Qual
1	5	3-Chloro-6-fluoro-pyrazine	132	C4H2ClFN2	1000146-10-7	38
2		Tranylcypropine-propionyl	189	C12H15NO	1000123-86-3	12
3		(E)-3-Chloro-2-methyl-2-pentenal	132	C6H9ClO	031357-76-3	12
4		2H-Cyclopenta[d]pyridazine, 2-me...	132	C8H8N2	022291-85-6	9
5		4-Chloro-2-fluoro-pyrimidine	132	C4H2ClFN2	051422-00-5	9



Data Path : Z:\HPCHEM1\BNA_G\DATA\BG041715\
 Data File : BG016501.D
 Acq On : 17 Apr 2015 22:45
 Operator : TP/IZ
 Sample : G1880-08
 Misc :
 ALS Vial : 16 Sample Multiplier: 1

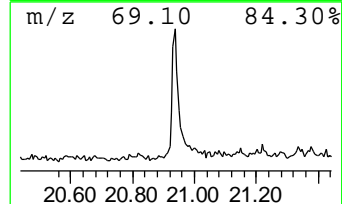
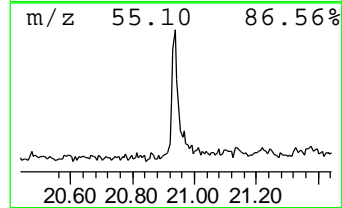
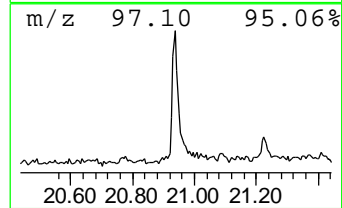
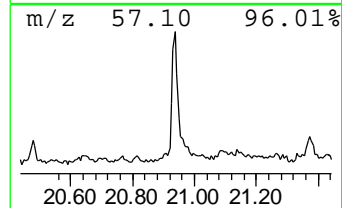
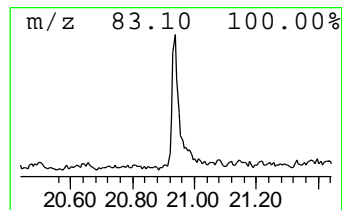
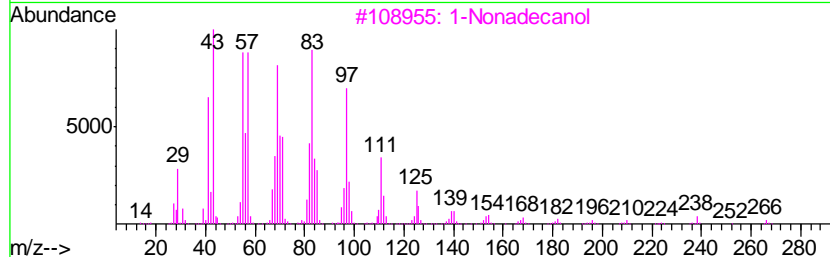
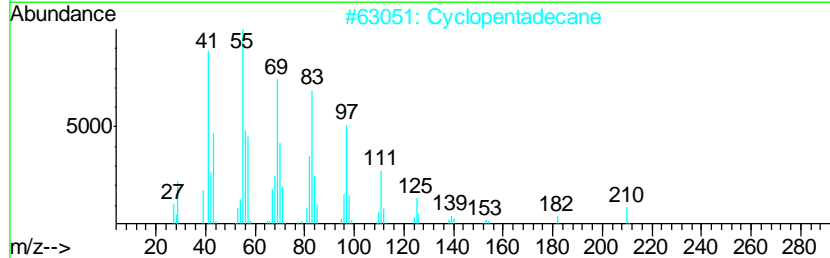
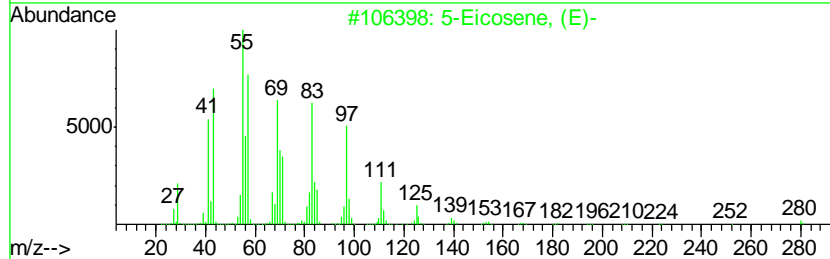
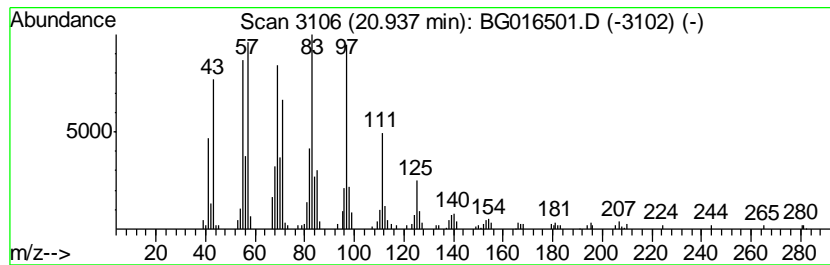
Instrument :
 BNA_G
 ClientSampleID :
 S5-1-4

Quant Method : Z:\HPCHEM1\BNA_G\METHODS\8270-BG040615.M
 Quant Title : ASP BNA STANDARDS FOR 5 POINT CALIBRATION

TIC Library : C:\DATABASE\NIST02.L
 TIC Integration Parameters: LSCINT.P

 Peak Number 6 5-Eicosene, (E)- Concentration Rank 6

R.T.	EstConc	Area	Relative to ISTD	R.T.	
20.94	2.57 ng	143177	Chrysene-d12	21.23	
Hit# of	5	Tentative ID	MW MolForm	CAS#	Qual
1		5-Eicosene, (E)-	280 C20H40	074685-30-6	97
2		Cyclopentadecane	210 C15H30	000295-48-7	91
3		1-Nonadecanol	284 C19H40O	001454-84-8	81
4		1-Octadecanol	270 C18H38O	000112-92-5	81
5		Trifluoroacetic acid, n-octadecy...	366 C20H37F3O2	079392-43-1	76



Data Path : Z:\HPCHEM1\BNA_G\DATA\BG041715\
Data File : BG016501.D
Acq On : 17 Apr 2015 22:45
Operator : TP/IZ
Sample : G1880-08
Misc :
ALS Vial : 16 Sample Multiplier: 1

Instrument :
BNA_G
ClientSampleId :
S5-1-4

Quant Method : Z:\HPCHEM1\BNA_G\METHODS\8270-BG040615.M
Quant Title : ASP BNA STANDARDS FOR 5 POINT CALIBRATION

TIC Library : C:\DATABASE\NIST02.L
TIC Integration Parameters: LSCINT.P

TIC Top Hit name	RT	EstConc	Units	Response	--Internal Standard--			
					#	RT	Resp	Conc
Butane, 2-methoxy...	2.83	4.6	ng	90752	1	7.66	396054	20.0
2-Pentanone, 4-hy...	4.77	8.4	ng	166637	1	7.66	396054	20.0
unknown7.19	7.19	65.4	ng	1294750	1	7.66	396054	20.0
5-Eicosene, (E)-	20.94	2.6	ng	143177	5	21.23	1112300	20.0