

Data Path : Z:\HPCHEM1\BNA G\DATA\BG041816\
 Data File : BG021730.D
 Acq On : 18 Apr 2016 8:29
 Operator : UM/SJ
 Sample : H2420-06
 Misc :
 ALS Vial : 36 Sample Multiplier: 1

Instrument :
 BNA_G
 ClientSampleId :
 FB-BWR-BB-R06-CS-1(0-18FT)

Integration Parameters: rteint.p
 Integrator: RTE
 Smoothing : ON Filtering: 5
 Sampling : 1 Min Area: 3 % of largest Peak
 Start Thrs: 0.2 Max Peaks: 100
 Stop Thrs : 0 Peak Location: TOP

If leading or trailing edge < 100 prefer < Baseline drop else tangent >
 Peak separation: 5

Method : Z:\HPCHEM1\BNA G\METHODS\8270-BG041316.M
 Title : ASP BNA STANDARDS FOR 5 POINT CALIBRATION

Signal : TIC

peak #	R.T. min	first scan	max scan	last scan	PK TY	peak height	corr. area	corr. % max.	% of total
1	3.630	131	135	142	rVB	25348	33300	1.17%	0.231%
2	4.682	308	314	324	rBV	176196	266750	9.34%	1.852%
3	5.293	413	418	426	rVB	145934	222858	7.80%	1.547%
4	5.763	491	498	507	rBV	584623	949149	33.22%	6.588%
5	7.367	760	771	780	rBV	593340	1028229	35.99%	7.137%
6	7.743	826	835	844	rBV	617863	1096514	38.38%	7.611%
7	8.213	908	915	921	rBV	99843	169841	5.94%	1.179%
8	8.542	963	971	980	rVB	445931	800119	28.00%	5.554%
9	9.382	1106	1114	1122	rBV	417383	758740	26.55%	5.267%
10	11.028	1387	1394	1400	rBV	158168	298978	10.46%	2.075%
11	11.080	1400	1403	1412	rVB	50501	80660	2.82%	0.560%
12	13.448	1799	1806	1814	rVB	1264088	2014425	70.50%	13.983%
13	14.823	2033	2040	2046	rBV2	275622	458708	16.05%	3.184%
14	14.882	2046	2050	2056	rVB	23562	34226	1.20%	0.238%
15	16.304	2285	2292	2303	rBV	956824	1491675	52.21%	10.354%
16	17.555	2495	2505	2510	rBV2	346894	514496	18.01%	3.571%
17	19.817	2886	2890	2895	rVB	61894	72757	2.55%	0.505%
18	20.140	2939	2945	2951	rBV	2161924	2857282	100.00%	19.833%
19	20.857	3062	3067	3072	rBV	51241	62401	2.18%	0.433%
20	21.827	3225	3232	3243	rVB	357171	604654	21.16%	4.197%
21	25.158	3788	3799	3812	rBV2	194925	590950	20.68%	4.102%

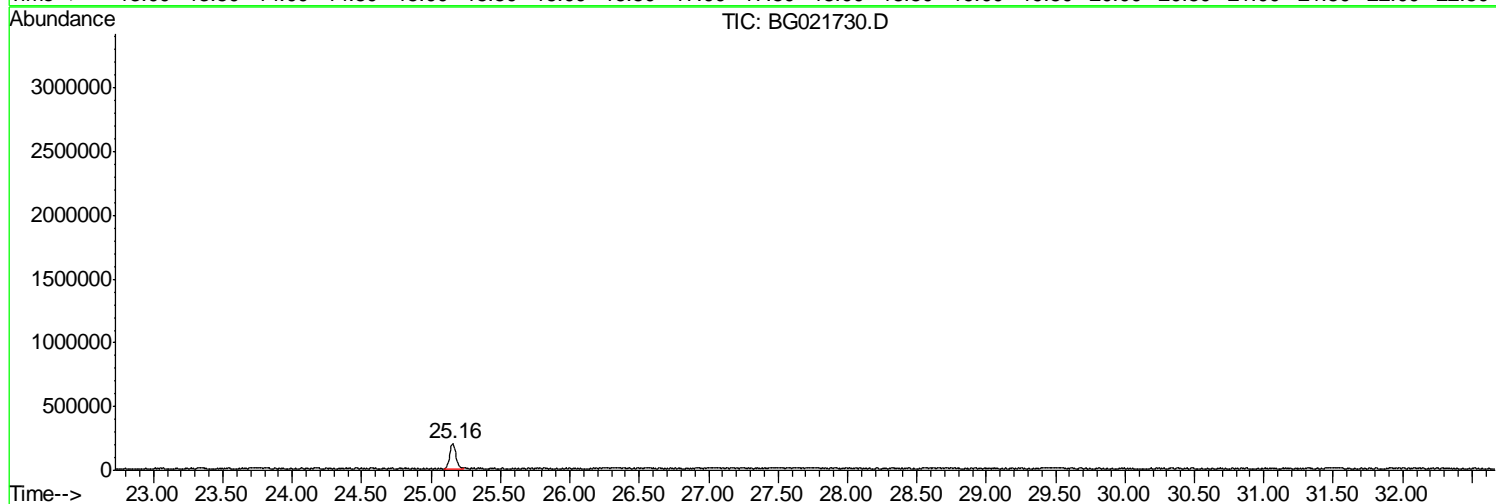
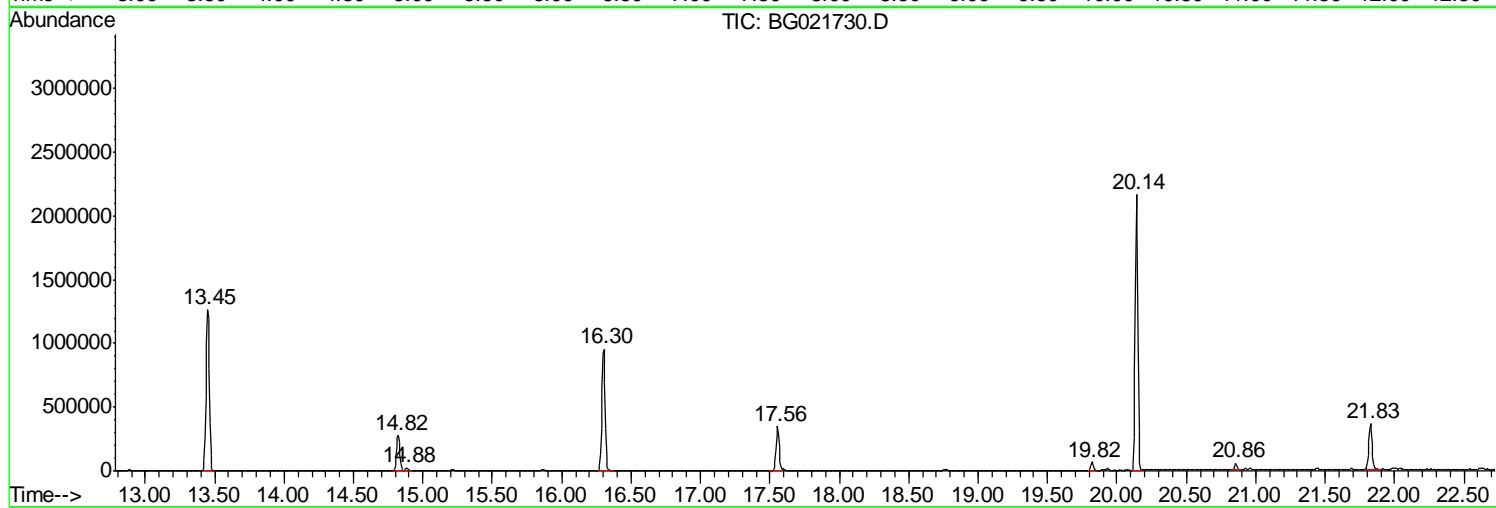
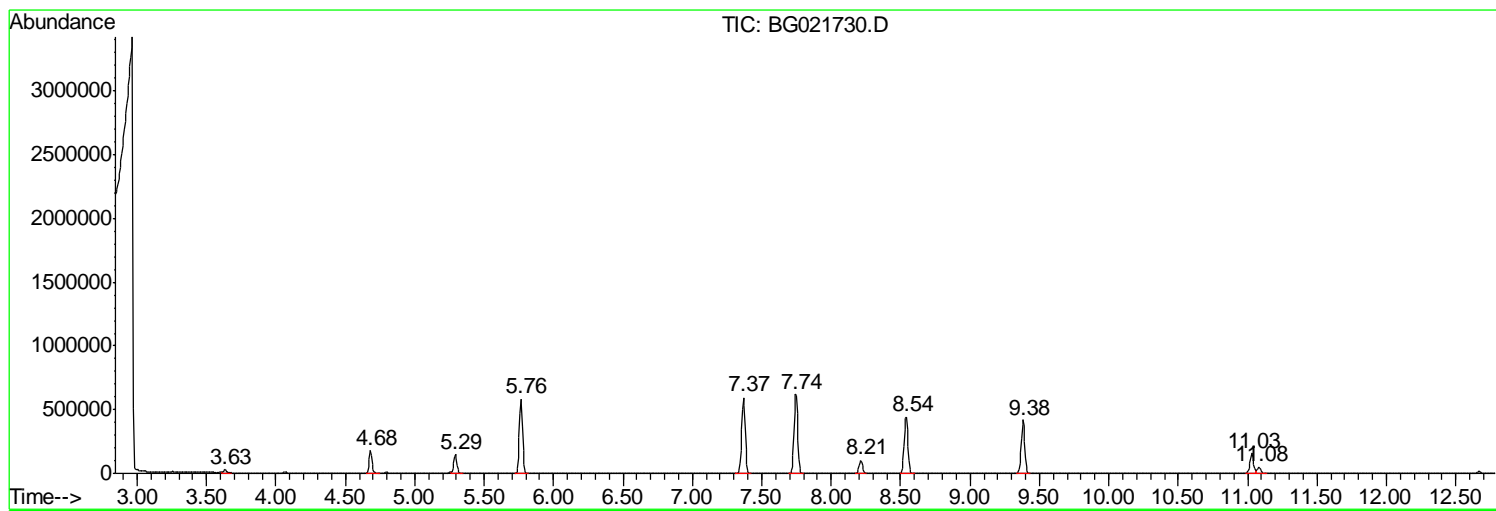
Sum of corrected areas: 14406712

Data Path : Z:\HPCHEM1\BNA G\DATA\BG041816\
Data File : BG021730.D
Acq On : 18 Apr 2016 8:29
Operator : UM/SJ
Sample : H2420-06
Misc :
ALS Vial : 36 Sample Multiplier: 1

Instrument :
BNA_G
ClientSampleId :
FB-BWR-BB-R06-CS-1(0-18FT)

Quant Method : Z:\HPCHEM1\BNA G\METHODS\8270-BG041316.M
Quant Title : ASP BNA STANDARDS FOR 5 POINT CALIBRATION

TIC Library : C:\DATABASE\NIST02.L
TIC Integration Parameters: LSCINT.P



Data Path : Z:\HPCHEM1\BNA G\DATA\BG041816\
 Data File : BG021730.D
 Acq On : 18 Apr 2016 8:29
 Operator : UM/SJ
 Sample : H2420-06
 Misc :
 ALS Vial : 36 Sample Multiplier: 1

Instrument :
 BNA_G
 ClientSampleId :
 FB-BWR-BB-R06-CS-1(0-18FT)

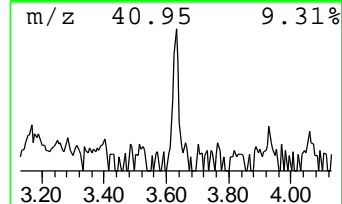
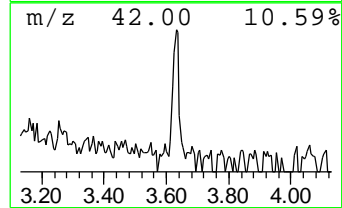
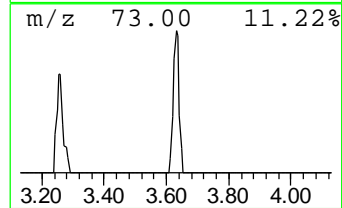
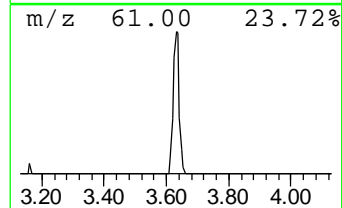
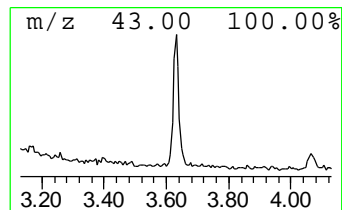
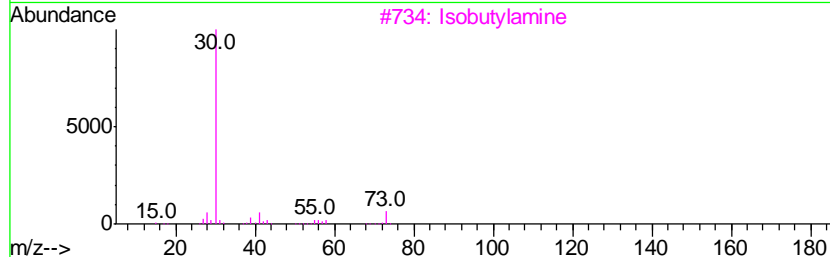
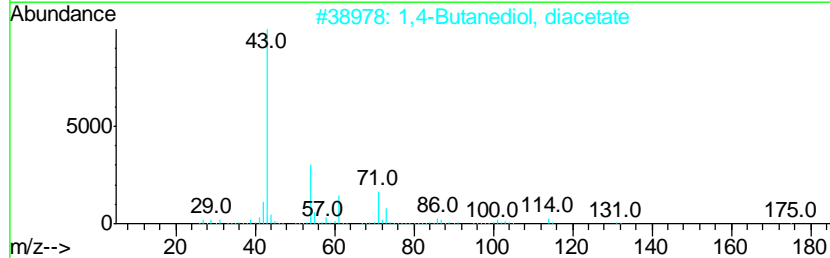
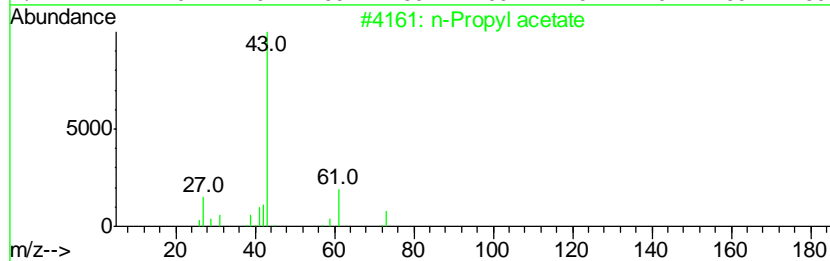
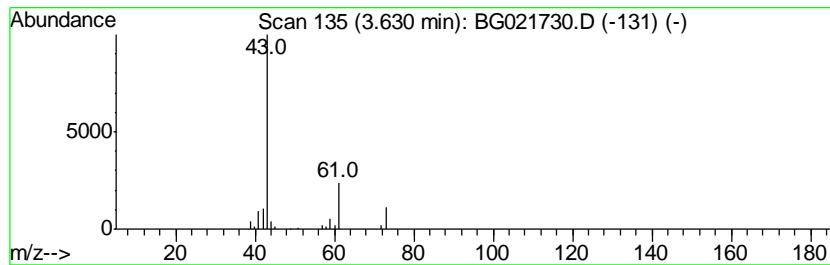
Quant Method : Z:\HPCHEM1\BNA G\METHODS\8270-BG041316.M
 Quant Title : ASP BNA STANDARDS FOR 5 POINT CALIBRATION

TIC Library : C:\DATABASE\NIST02.L
 TIC Integration Parameters: LSCINT.P

 Peak Number 1 n-Propyl acetate Concentration Rank 5

R.T.	EstConc	Area	Relative to ISTD	R.T.
3.63	3.92 ng	33300	1,4-Dichlorobenzene-d4	8.21

Hit#	of	Tentative ID	MW	MolForm	CAS#	Qual
1	5	n-Propyl acetate	102	C5H10O2	000109-60-4	72
2		1,4-Butanediol, diacetate	174	C8H14O4	000628-67-1	9
3		Isobutylamine	73	C4H11N	000078-81-9	7
4		Oxirane, 2,3-dimethyl-, cis-	72	C4H8O	001758-33-4	7
5		Isobutane	58	C4H10	000075-28-5	7



Data Path : Z:\HPCHEM1\BNA G\DATA\BG041816\
 Data File : BG021730.D
 Acq On : 18 Apr 2016 8:29
 Operator : UM/SJ
 Sample : H2420-06
 Misc :
 ALS Vial : 36 Sample Multiplier: 1

Instrument :
 BNA_G
 ClientSampleID :
 FB-BWR-BB-R06-CS-1(0-18FT)

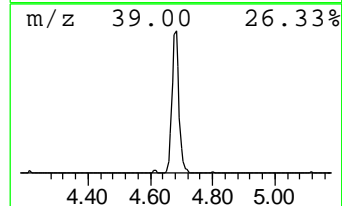
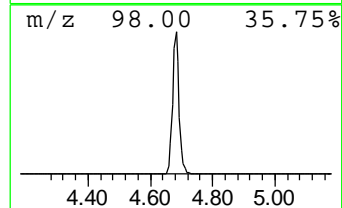
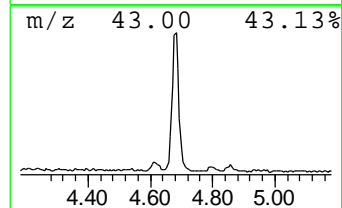
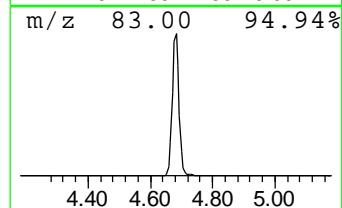
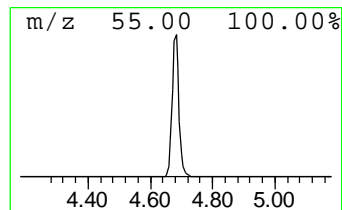
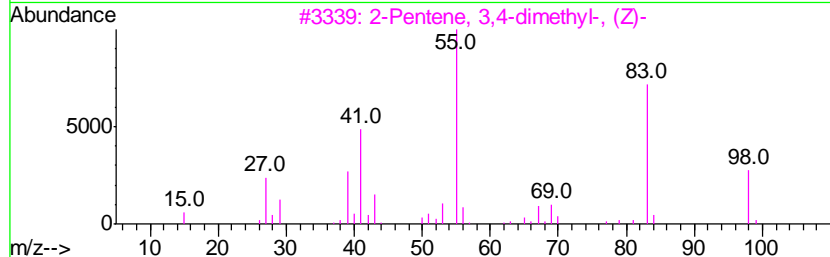
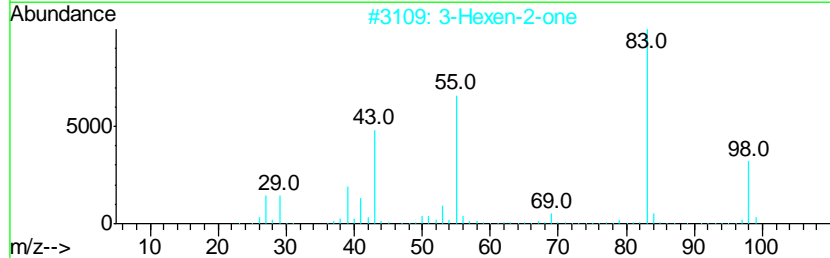
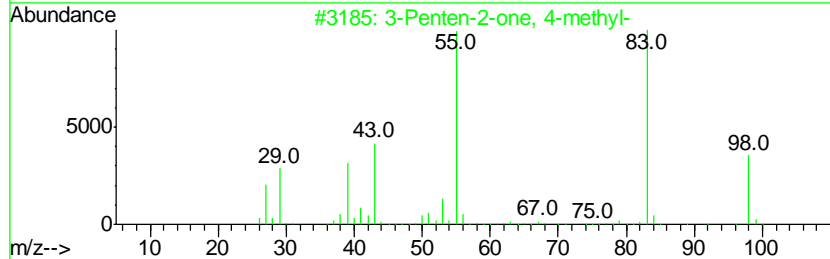
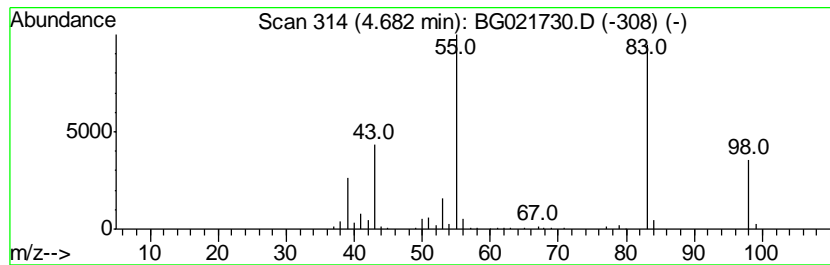
Quant Method : Z:\HPCHEM1\BNA G\METHODS\8270-BG041316.M
 Quant Title : ASP BNA STANDARDS FOR 5 POINT CALIBRATION

TIC Library : C:\DATABASE\NIST02.L
 TIC Integration Parameters: LSCINT.P

 Peak Number 2 3-Penten-2-one, 4-methyl- Concentration Rank 3

R.T.	EstConc	Area	Relative to ISTD	R.T.
4.68	31.41 ng	266750	1,4-Dichlorobenzene-d4	8.21

Hit#	of	Tentative ID	MW	MolForm	CAS#	Qual
1	5	3-Penten-2-one, 4-methyl-	98	C6H10O	000141-79-7	91
2		3-Hexen-2-one	98	C6H10O	000763-93-9	90
3		2-Pentene, 3,4-dimethyl-, (Z)-	98	C7H14	004914-91-4	86
4		2-Pentene, 2,4-dimethyl-	98	C7H14	000625-65-0	80
5		2-Pentene, 3,4-dimethyl-, (E)-	98	C7H14	004914-92-5	78



Data Path : Z:\HPCHEM1\BNA G\DATA\BG041816\
 Data File : BG021730.D
 Acq On : 18 Apr 2016 8:29
 Operator : UM/SJ
 Sample : H2420-06
 Misc :
 ALS Vial : 36 Sample Multiplier: 1

Instrument :
 BNA_G
 ClientSampleID :
 FB-BWR-BB-R06-CS-1(0-18FT)

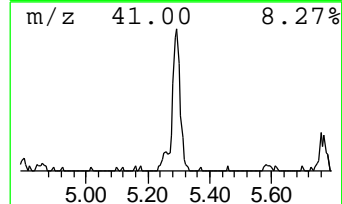
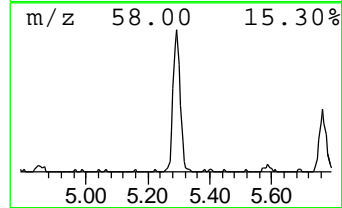
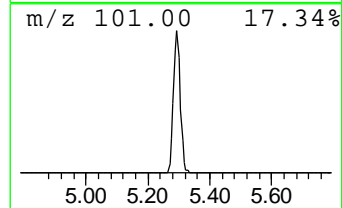
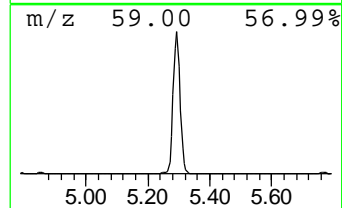
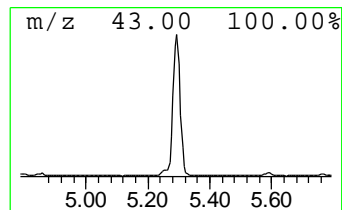
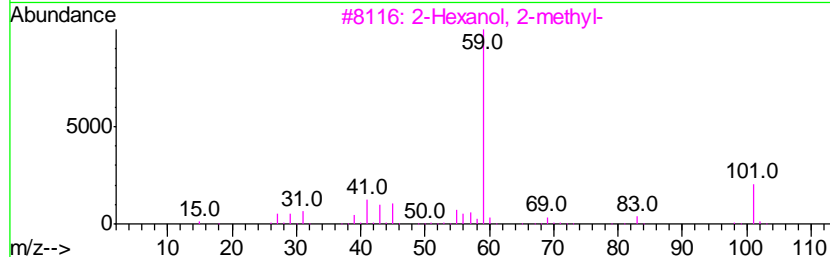
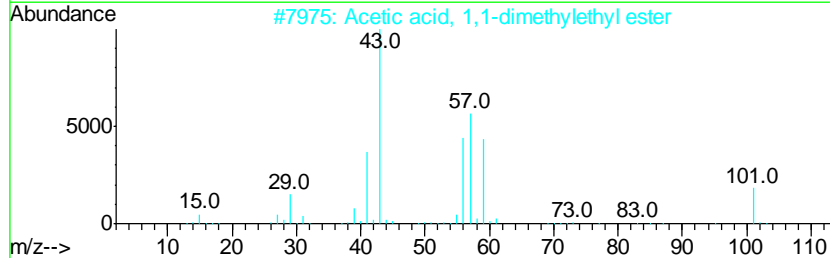
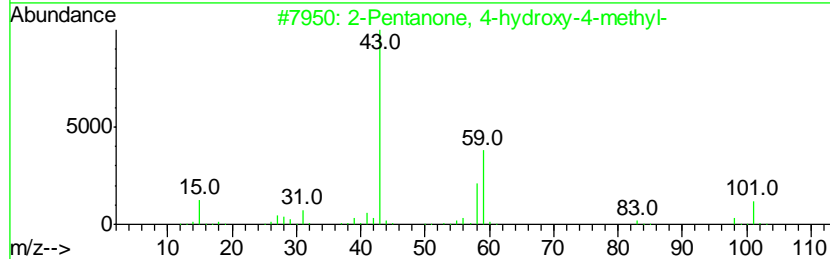
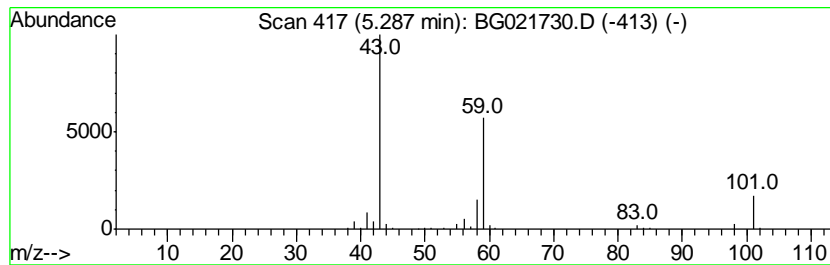
Quant Method : Z:\HPCHEM1\BNA G\METHODS\8270-BG041316.M
 Quant Title : ASP BNA STANDARDS FOR 5 POINT CALIBRATION

TIC Library : C:\DATABASE\NIST02.L
 TIC Integration Parameters: LSCINT.P

 Peak Number 3 2-Pentanone, 4-hydroxy-4-me... Concentration Rank 4

R.T.	EstConc	Area	Relative to ISTD	R.T.
5.29	26.24 ng	222858	1,4-Dichlorobenzene-d4	8.21

Hit#	of	Tentative ID	MW	MolForm	CAS#	Qual
1	5	2-Pentanone, 4-hydroxy-4-methyl-	116	C6H12O2	000123-42-2	59
2		Acetic acid, 1,1-dimethylethyl e...	116	C6H12O2	000540-88-5	38
3		2-Hexanol, 2-methyl-	116	C7H16O	000625-23-0	28
4		3-Hexanol, 4-methyl-	116	C7H16O	000615-29-2	28
5		Acetic acid, cyano-, 1,1-dimethy...	141	C7H11NO2	001116-98-9	23



Data Path : Z:\HPCHEM1\BNA G\DATA\BG041816\
 Data File : BG021730.D
 Acq On : 18 Apr 2016 8:29
 Operator : UM/SJ
 Sample : H2420-06
 Misc :
 ALS Vial : 36 Sample Multiplier: 1

Instrument :
 BNA_G
 ClientSampleId :
 FB-BWR-BB-R06-CS-1(0-18FT)

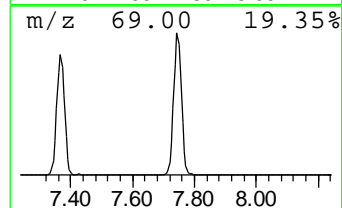
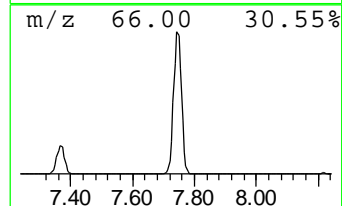
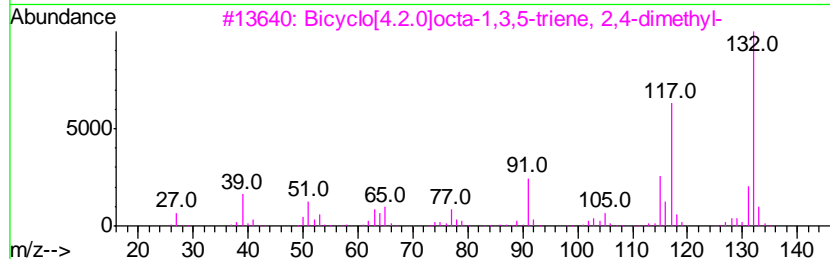
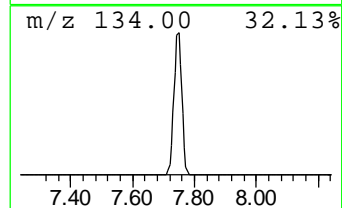
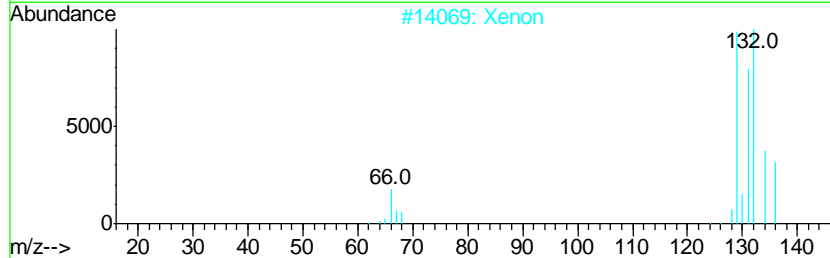
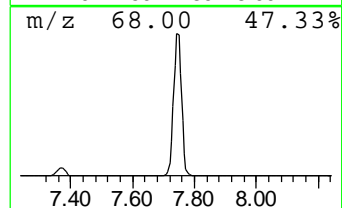
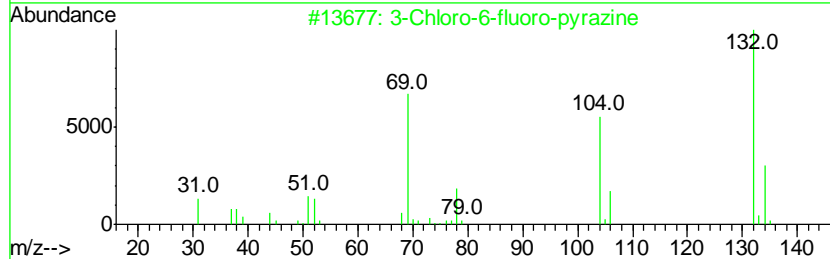
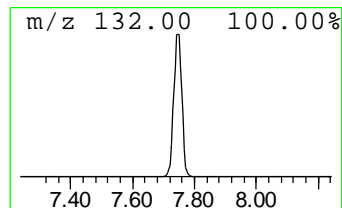
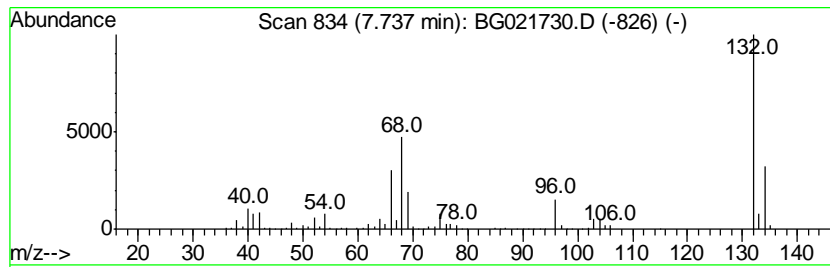
Quant Method : Z:\HPCHEM1\BNA G\METHODS\8270-BG041316.M
 Quant Title : ASP BNA STANDARDS FOR 5 POINT CALIBRATION

TIC Library : C:\DATABASE\NIST02.L
 TIC Integration Parameters: LSCINT.P

 Peak Number 4 unknown7.74 Concentration Rank 1

R.T.	EstConc	Area	Relative to ISTD	R.T.
7.74	129.12 ng	1096510	1,4-Dichlorobenzene-d4	8.21

Hit#	of	Tentative ID	MW	MolForm	CAS#	Qual
1	5	3-Chloro-6-fluoro-pyrazine	132	C4H2ClFN2	1000146-10-7	27
2		Xenon	132	Xe	007440-63-3	9
3		Bicyclo[4.2.0]octa-1,3,5-triene,...	132	C10H12	028749-81-7	9
4		Benzene, 1-ethenyl-3,5-dimethyl-	132	C10H12	005379-20-4	9
5		4-Chloro-2-fluoro-pyrimidine	132	C4H2ClFN2	051422-00-5	9



Data Path : Z:\HPCHEM1\BNA G\DATA\BG041816\
 Data File : BG021730.D
 Acq On : 18 Apr 2016 8:29
 Operator : UM/SJ
 Sample : H2420-06
 Misc :
 ALS Vial : 36 Sample Multiplier: 1

Instrument :
 BNA_G
 ClientSampleID :
 FB-BWR-BB-R06-CS-1(0-18FT)

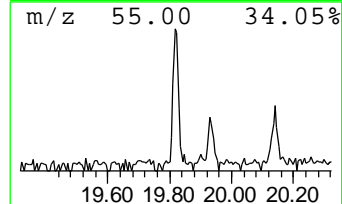
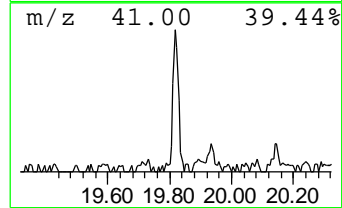
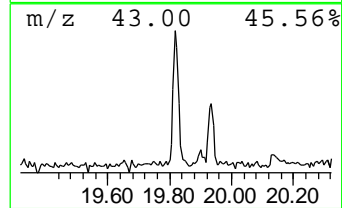
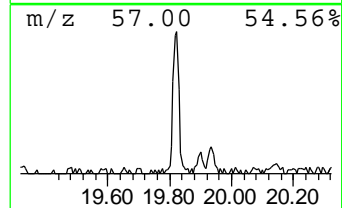
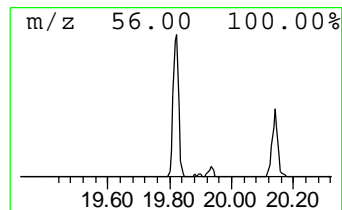
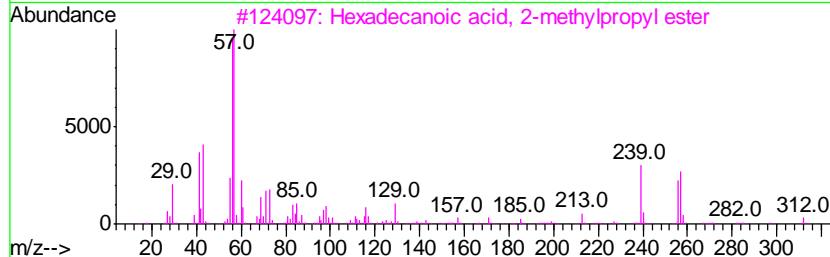
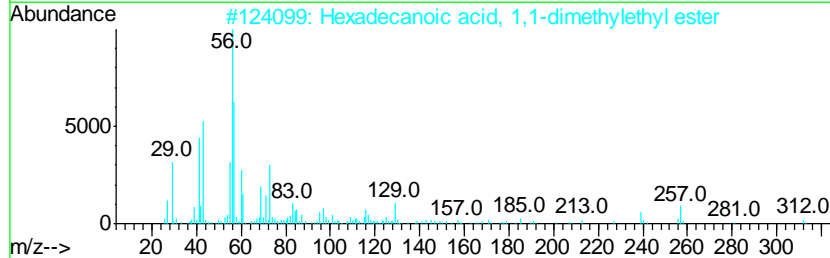
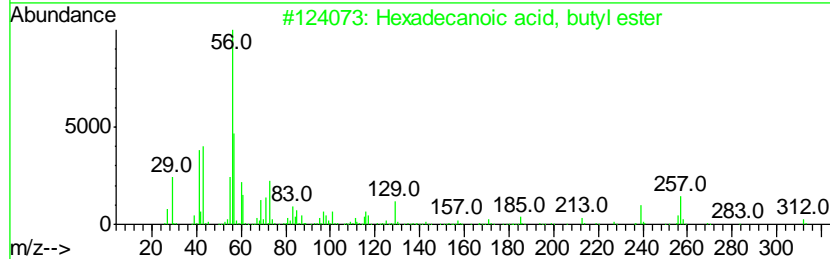
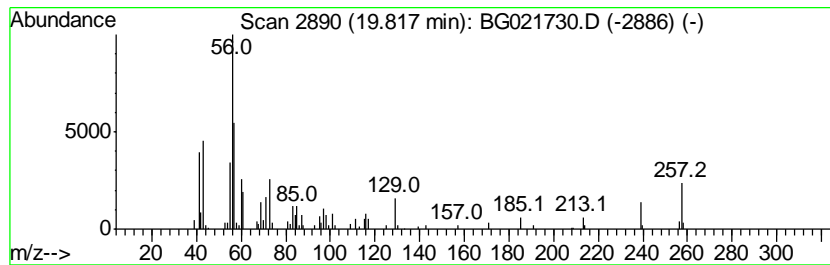
Quant Method : Z:\HPCHEM1\BNA G\METHODS\8270-BG041316.M
 Quant Title : ASP BNA STANDARDS FOR 5 POINT CALIBRATION

TIC Library : C:\DATABASE\NIST02.L
 TIC Integration Parameters: LSCINT.P

 Peak Number 6 Hexadecanoic acid, butyl ester Concentration Rank 6

R.T.	EstConc	Area	Relative to ISTD	R.T.
19.82	2.41 ng	72757	Chrysene-d12	21.83

Hit#	of	Tentative ID	MW	MolForm	CAS#	Qual
1	5	Hexadecanoic acid, butyl ester	312	C20H40O2	000111-06-8	91
2		Hexadecanoic acid, 1,1-dimethyle...	312	C20H40O2	031158-91-5	90
3		Hexadecanoic acid, 2-methylpropyl...	312	C20H40O2	000110-34-9	37
4		Decane, 2,2,3-trimethyl-	184	C13H28	062338-09-4	35
5		Cyclobutane, 1,1-dimethyl-2-octyl-	196	C14H28	062338-30-1	32



Data Path : Z:\HPCHEM1\BNA G\DATA\BG041816\
 Data File : BG021730.D
 Acq On : 18 Apr 2016 8:29
 Operator : UM/SJ
 Sample : H2420-06
 Misc :
 ALS Vial : 36 Sample Multiplier: 1

Instrument :
 BNA_G
 ClientSampleId :
 FB-BWR-BB-R06-CS-1(0-18FT)

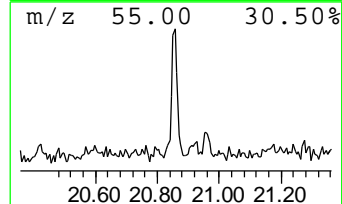
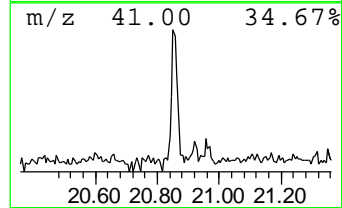
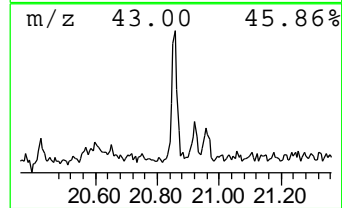
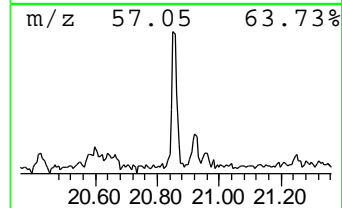
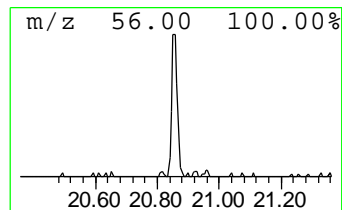
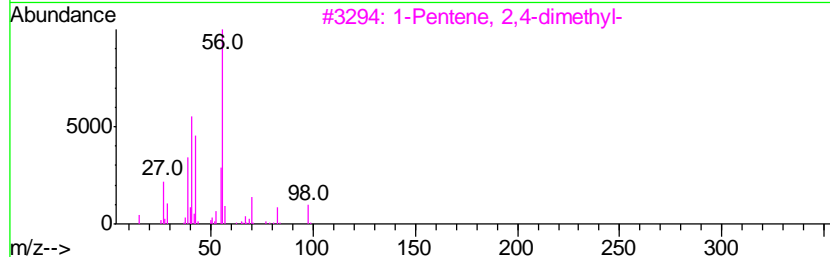
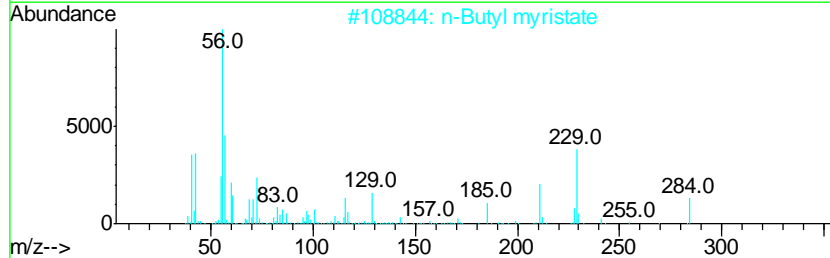
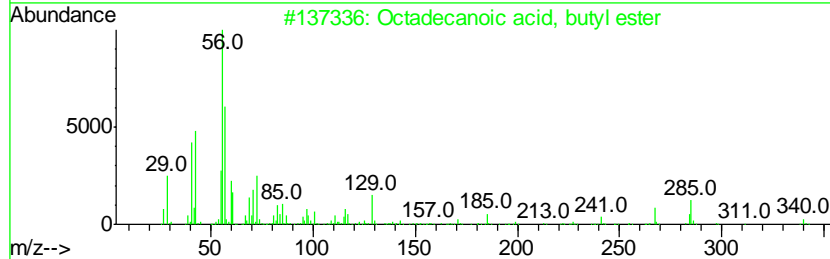
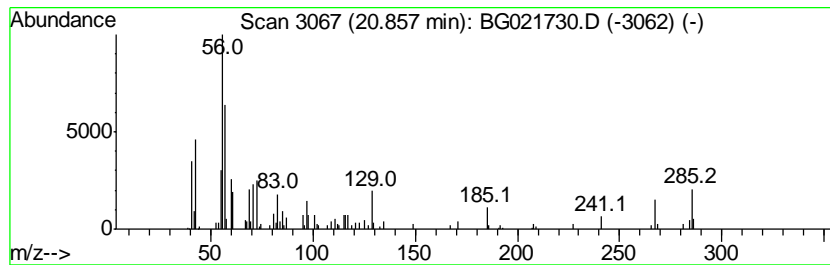
Quant Method : Z:\HPCHEM1\BNA G\METHODS\8270-BG041316.M
 Quant Title : ASP BNA STANDARDS FOR 5 POINT CALIBRATION

TIC Library : C:\DATABASE\NIST02.L
 TIC Integration Parameters: LSCINT.P

 Peak Number 7 Octadecanoic acid, butyl ester Concentration Rank 7

R.T.	EstConc	Area	Relative to ISTD	R.T.
20.86	2.06 ng	62401	Chrysene-d12	21.83

Hit#	of	Tentative ID	MW	MolForm	CAS#	Qual
1	5	Octadecanoic acid, butyl ester	340	C22H44O2	000123-95-5	90
2		n-Butyl myristate	284	C18H36O2	000110-36-1	72
3		1-Pentene, 2,4-dimethyl-	98	C7H14	002213-32-3	22
4		1-Hexene, 2,5-dimethyl-	112	C8H16	006975-92-4	22
5		Cyclopentane, 1,1-dimethyl-	98	C7H14	001638-26-2	22



Data Path : Z:\HPCHEM1\BNA_G\DATA\BG041816\
Data File : BG021730.D
Acq On : 18 Apr 2016 8:29
Operator : UM/SJ
Sample : H2420-06
Misc :
ALS Vial : 36 Sample Multiplier: 1

Instrument :
BNA_G
ClientSampleId :
FB-BWR-BB-R06-CS-1(0-18FT)

Quant Method : Z:\HPCHEM1\BNA_G\METHODS\8270-BG041316.M
Quant Title : ASP BNA STANDARDS FOR 5 POINT CALIBRATION

TIC Library : C:\DATABASE\NIST02.L
TIC Integration Parameters: LSCINT.P

TIC Top Hit name	RT	EstConc	Units	Response	--Internal Standard--			
					#	RT	Resp	Conc
n-Propyl acetate	3.63	3.9	ng	33300	1	8.21	169841	20.0
3-Penten-2-one, 4...	4.68	31.4	ng	266750	1	8.21	169841	20.0
2-Pentanone, 4-hy...	5.29	26.2	ng	222858	1	8.21	169841	20.0
unknown7.74	7.74	129.1	ng	1096510	1	8.21	169841	20.0
Hexadecanoic acid...	19.82	2.4	ng	72757	5	21.83	604654	20.0
Octadecanoic acid...	20.86	2.1	ng	62401	5	21.83	604654	20.0