

Data Path : Z:\HPCHEM1\BNA G\DATA\BG042015\  
 Data File : BG016575.D  
 Acq On : 21 Apr 2015 7:36  
 Operator : TP/IZ  
 Sample : G1845-02DL 50X  
 Misc :  
 ALS Vial : 26 Sample Multiplier: 1

Instrument :  
 BNA\_G  
 ClientSampleId :  
 EFFWWDL

Quant Time: Apr 21 08:36:20 2015  
 Quant Method : Z:\HPCHEM1\BNA G\METHODS\8270-BG040615.M  
 Quant Title : ASP BNA STANDARDS FOR 5 POINT CALIBRATION  
 QLast Update : Tue Apr 14 14:00:56 2015  
 Response via : Initial Calibration

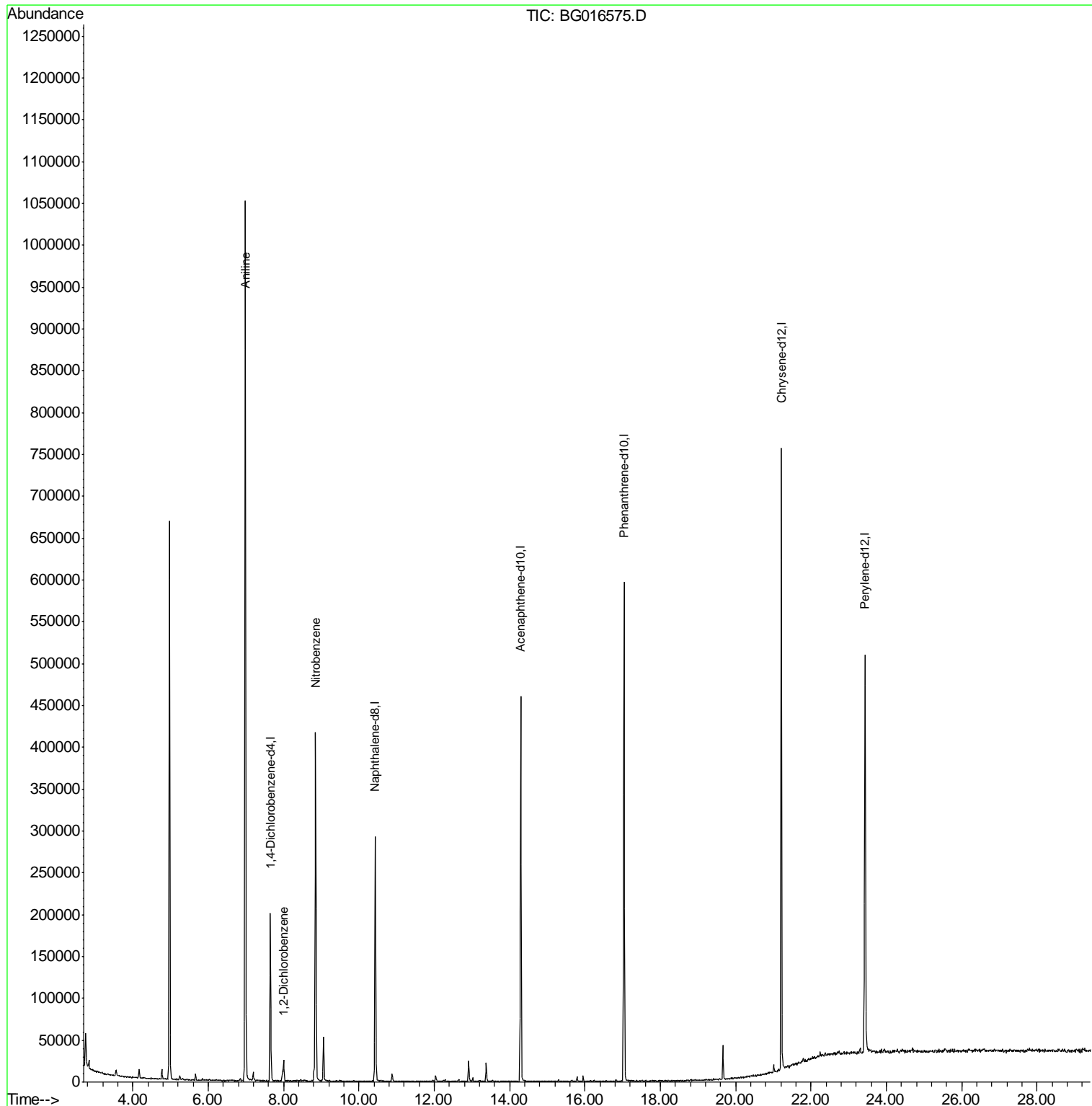
Internal Standards	R.T.	QIon	Response	Conc	Units	Dev(Min)
1) 1,4-Dichlorobenzene-d4	7.65	152	56838	20.00	ng	-0.02
21) Naphthalene-d8	10.43	136	255621	20.00	ng	-0.03
38) Acenaphthene-d10	14.29	164	157979	20.00	ng	-0.03
63) Phenanthrene-d10	17.04	188	335881	20.00	ng	-0.03
75) Chrysene-d12	21.21	240	299302	20.00	ng	-0.03
86) Perylene-d12	23.43	264	286455	20.00	ng	-0.03
System Monitoring Compounds						
5) 2-Fluorophenol	5.24	112	2863	0.79	ng	-0.02
7) Phenol-d6	6.85	99	2602	0.48	ng	-0.01
23) Nitrobenzene-d5	8.80	82	5837	1.32	ng	-0.03
41) 2,4,6-Tribromophenol	15.79	330	1216	1.14	ng	-0.02
44) 2-Fluorobiphenyl	12.92	172	15166	1.63	ng	-0.02
78) Terphenyl-d14	19.66	244	18416	1.44	ng	-0.03
Target Compounds						
6) Aniline	6.98	93	695540	90.08	ng	98
14) 1,2-Dichlorobenzene	8.00	146	11246	2.60	ng	# 87
24) Nitrobenzene	8.85	77	238043	50.45	ng	92

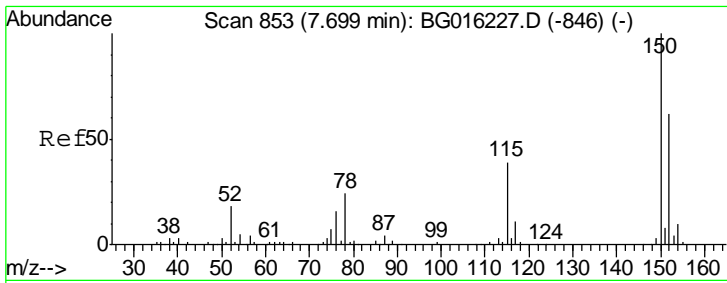
(#) = qualifier out of range (m) = manual integration (+) = signals summed

Data Path : Z:\HPCHEM1\BNA G\DATA\BG042015\  
 Data File : BG016575.D  
 Acq On : 21 Apr 2015 7:36  
 Operator : TP/IZ  
 Sample : G1845-02DL 50X  
 Misc :  
 ALS Vial : 26 Sample Multiplier: 1

Instrument :  
 BNA\_G  
 ClientSampleId :  
 EFFWWDL

Quant Time: Apr 21 08:36:20 2015  
 Quant Method : Z:\HPCHEM1\BNA G\METHODS\8270-BG040615.M  
 Quant Title : ASP BNA STANDARDS FOR 5 POINT CALIBRATION  
 QLast Update : Tue Apr 14 14:00:56 2015  
 Response via : Initial Calibration

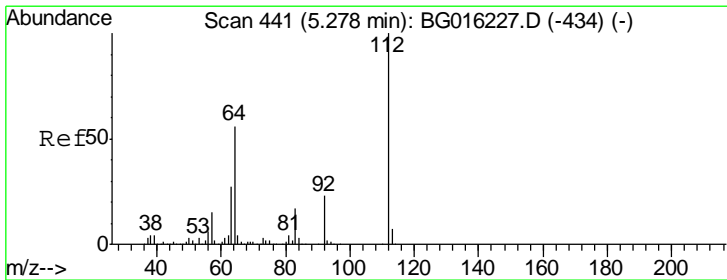
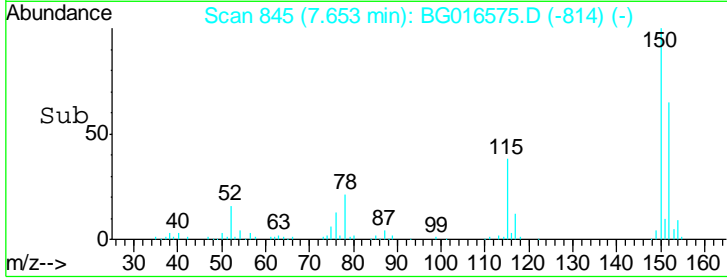
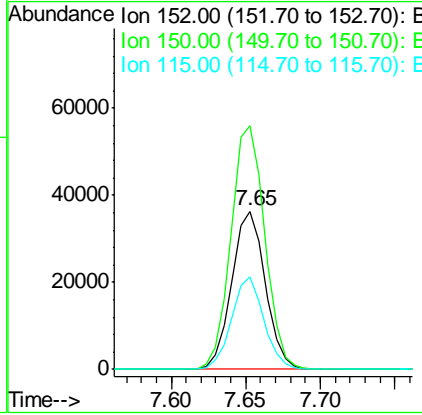
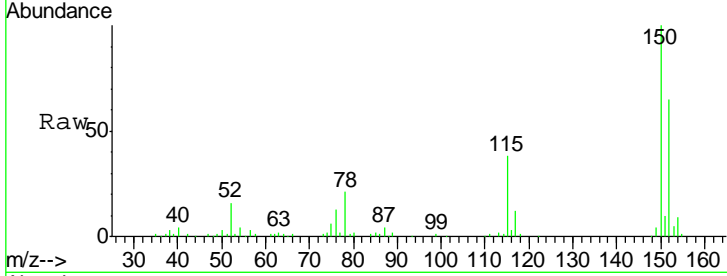




#1  
 1,4-Dichlorobenzene-d4  
 Concen: 20.00 ng  
 RT: 7.65 min Scan# 845  
 Delta R.T. -0.02 min  
 Lab File: BG016575.D  
 Acq: 21 Apr 2015 7:36

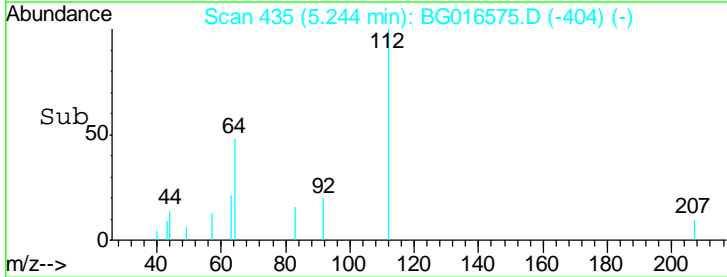
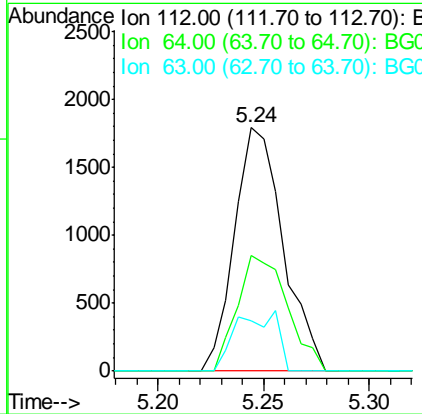
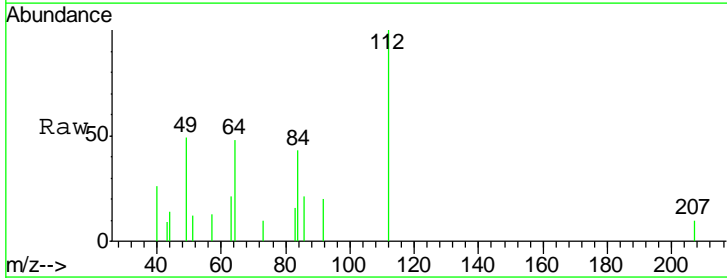
**Instrument :**  
 BNA\_G  
**ClientSampled :**  
 EFFWDL

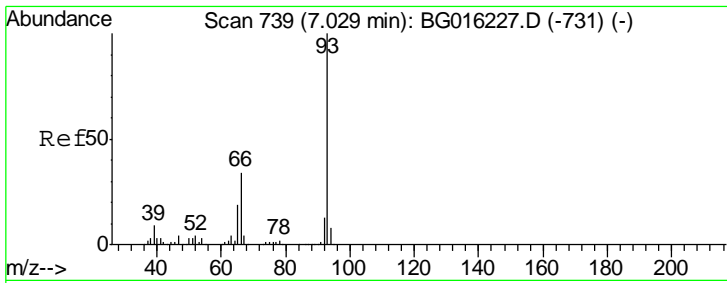
Tgt Ion	Resp	Lower	Upper
152	100		
150	153.7	130.1	195.1
115	58.0	50.5	75.7



#5  
 2-Fluorophenol  
 Concen: 0.79 ng  
 RT: 5.24 min Scan# 435  
 Delta R.T. -0.02 min  
 Lab File: BG016575.D  
 Acq: 21 Apr 2015 7:36

Tgt Ion	Resp	Lower	Upper
112	100		
64	47.6	44.5	66.7
63	20.9	21.4	32.0#

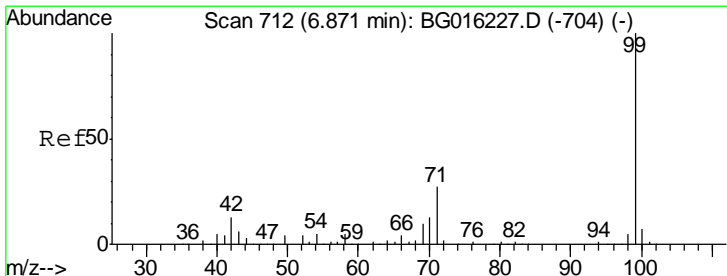
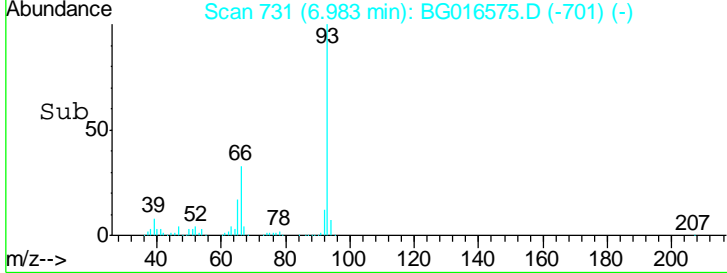
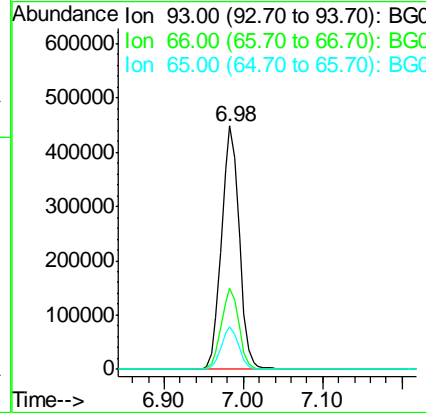
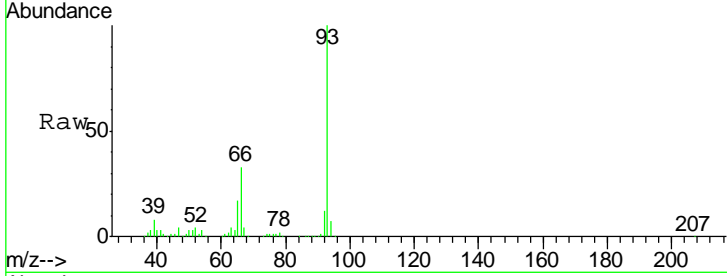




#6  
 Aniline  
 Concen: 90.08 ng  
 RT: 6.98 min Scan# 731  
 Delta R.T. -0.03 min  
 Lab File: BG016575.D  
 Acq: 21 Apr 2015 7:36

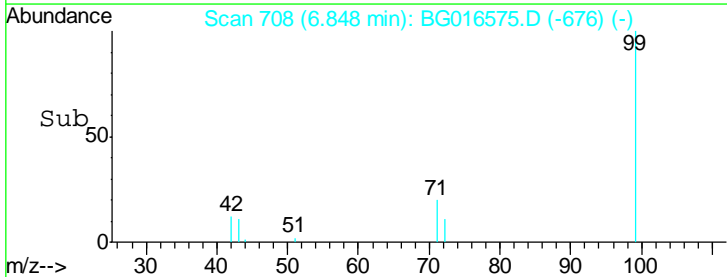
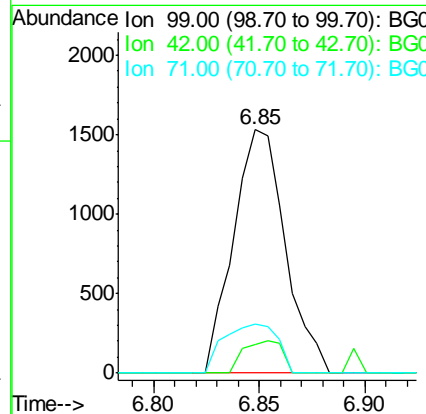
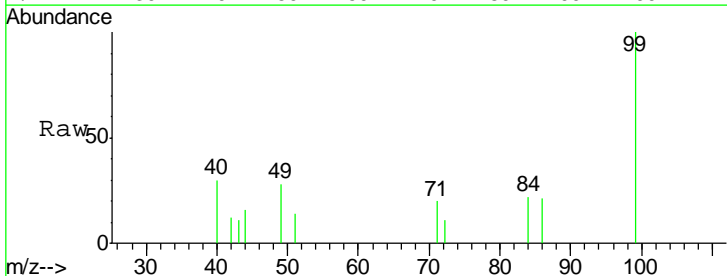
Instrument :  
 BNA\_G  
 ClientSampleId :  
 EFFWWDL

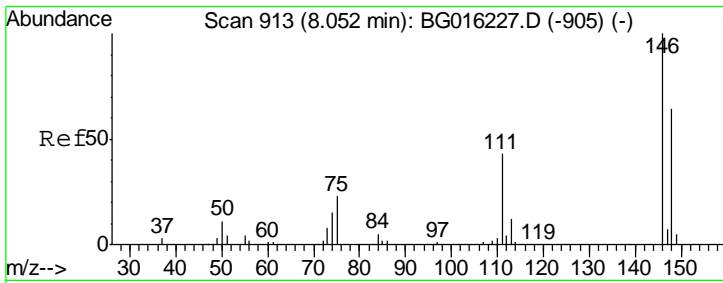
Tgt Ion	Resp	Lower	Upper
93	695540		
66	33.5	27.5	41.3
65	17.3	15.1	22.7



#7  
 Phenol-d6  
 Concen: 0.48 ng  
 RT: 6.85 min Scan# 708  
 Delta R.T. -0.01 min  
 Lab File: BG016575.D  
 Acq: 21 Apr 2015 7:36

Tgt Ion	Resp	Lower	Upper
99	2602		
42	11.7	10.0	15.0
71	20.3	21.5	32.3#

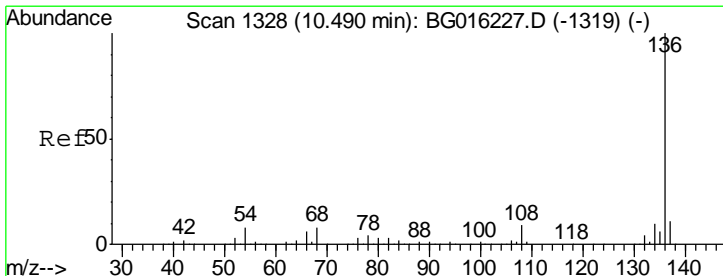
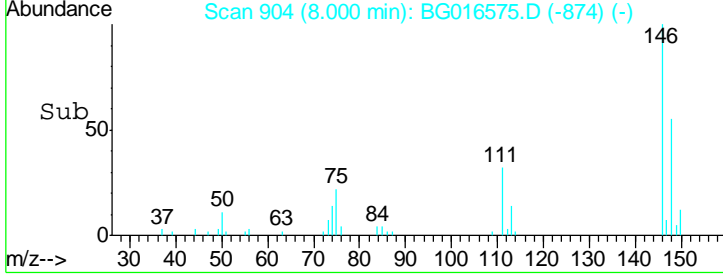
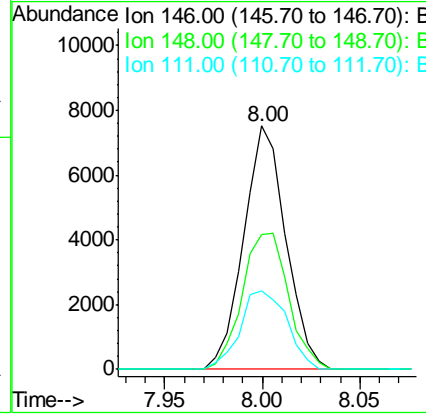
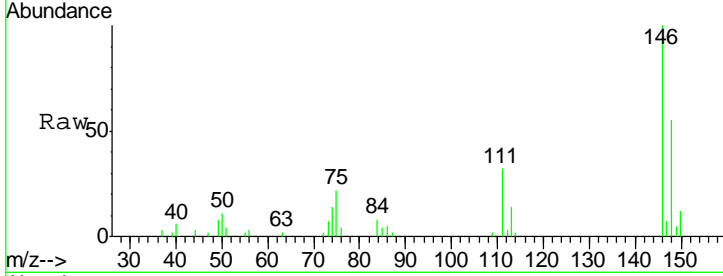




#14  
 1,2-Dichlorobenzene  
 Concen: 2.60 ng  
 RT: 8.00 min Scan# 904  
 Delta R.T. -0.03 min  
 Lab File: BG016575.D  
 Acq: 21 Apr 2015 7:36

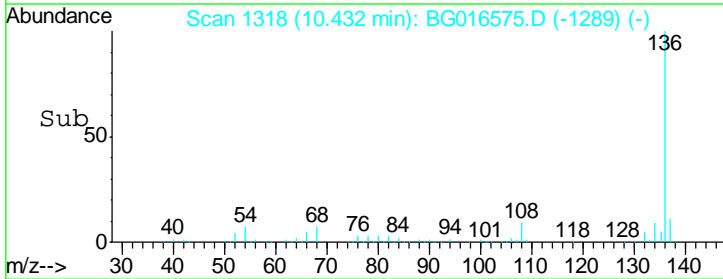
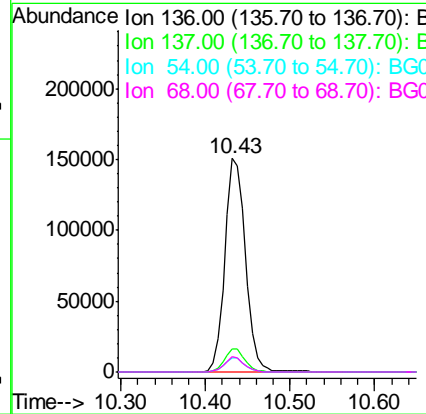
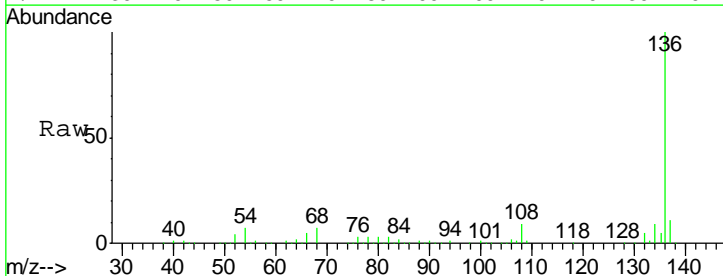
Instrument :  
 BNA\_G  
 ClientSampled :  
 EFFWWDL

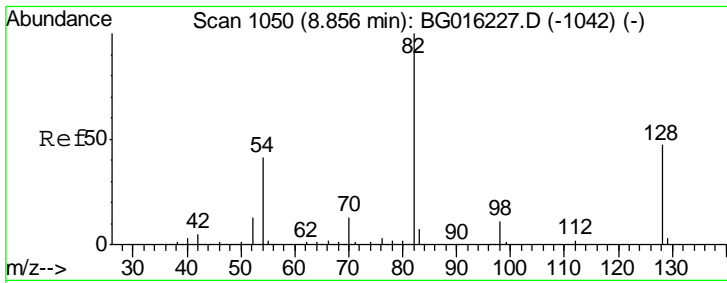
Tgt Ion	Resp	Lower	Upper
146	11246		
148	55.3	50.9	76.3
111	32.1	34.7	52.1#



#21  
 Naphthalene-d8  
 Concen: 20.00 ng  
 RT: 10.43 min Scan# 1318  
 Delta R.T. -0.03 min  
 Lab File: BG016575.D  
 Acq: 21 Apr 2015 7:36

Tgt Ion	Resp	Lower	Upper
136	255621		
137	11.0	8.7	13.1
54	6.7	6.3	9.5
68	7.3	6.5	9.7

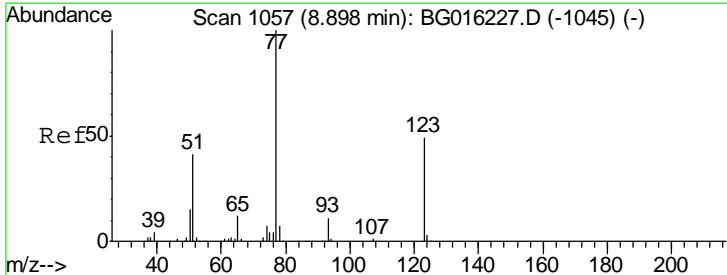
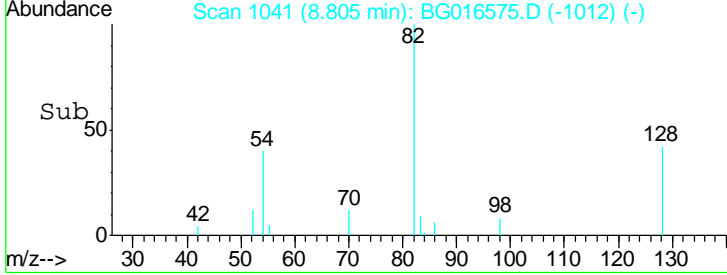
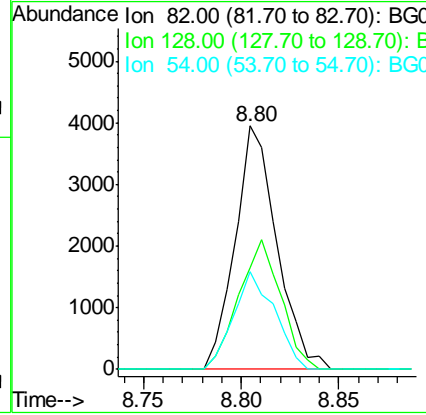
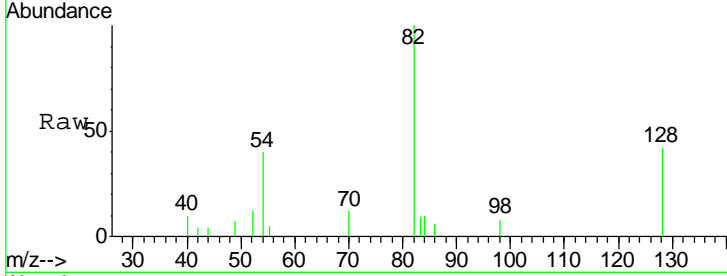




#23  
 Nitrobenzene-d5  
 Concen: 1.32 ng  
 RT: 8.80 min Scan# 1041  
 Delta R.T. -0.03 min  
 Lab File: BG016575.D  
 Acq: 21 Apr 2015 7:36

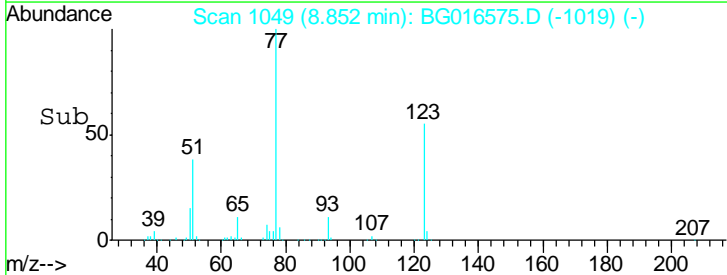
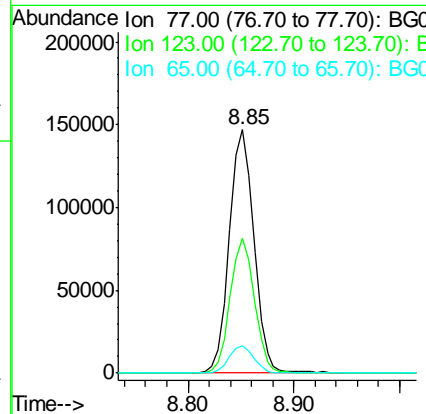
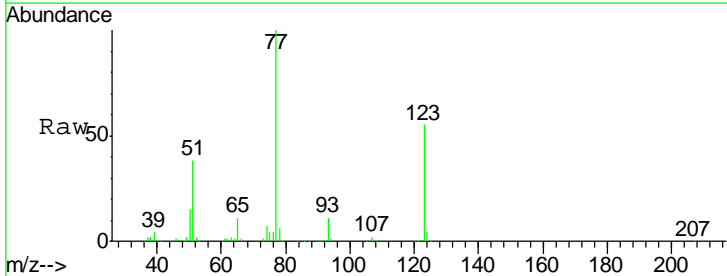
**Instrument :**  
 BNA\_G  
**ClientSampled :**  
 EFFWDL

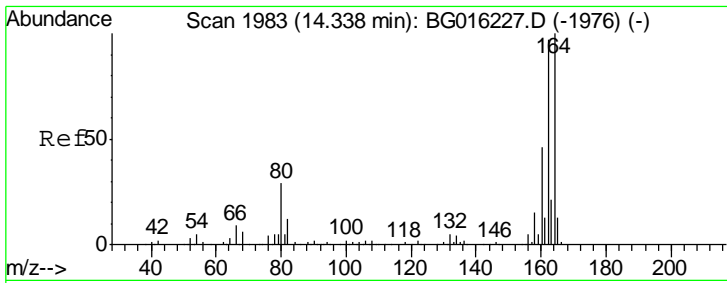
Tgt Ion	Resp	Lower	Upper
82	5837		
128	41.5	37.8	56.8
54	40.2	32.6	49.0



#24  
 Nitrobenzene  
 Concen: 50.45 ng  
 RT: 8.85 min Scan# 1049  
 Delta R.T. -0.03 min  
 Lab File: BG016575.D  
 Acq: 21 Apr 2015 7:36

Tgt Ion	Resp	Lower	Upper
77	238043		
123	55.2	38.8	58.2
65	11.4	9.4	14.2

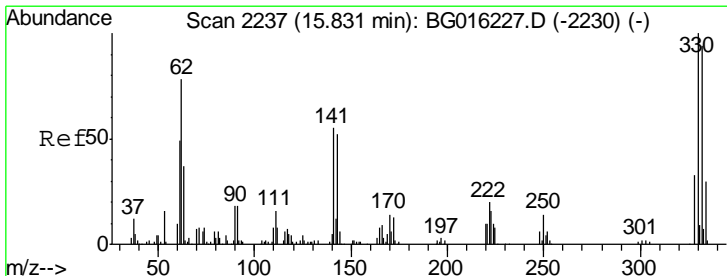
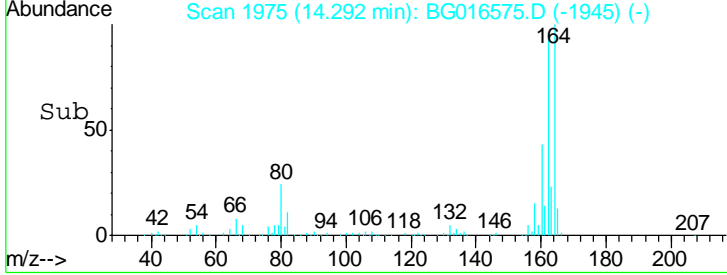
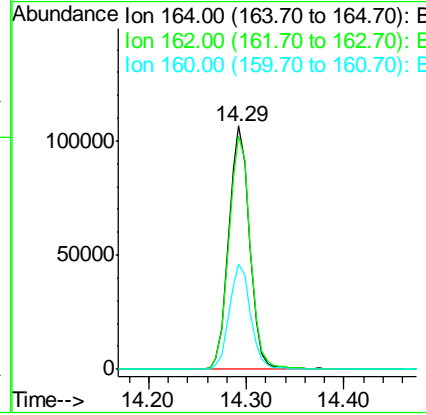
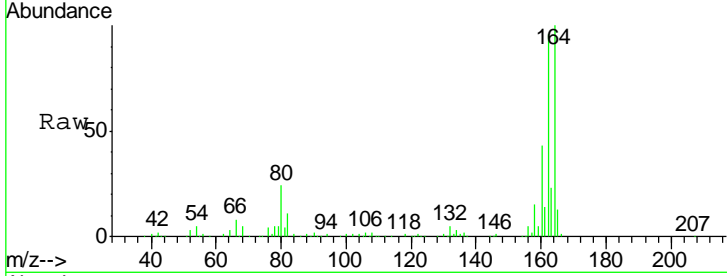




#38  
 Acenaphthene-d10  
 Concen: 20.00 ng  
 RT: 14.29 min Scan# 1975  
 Delta R.T. -0.03 min  
 Lab File: BG016575.D  
 Acq: 21 Apr 2015 7:36

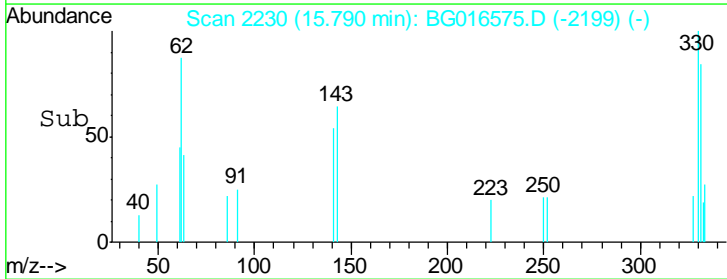
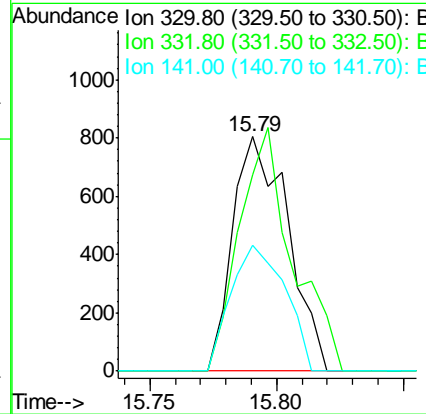
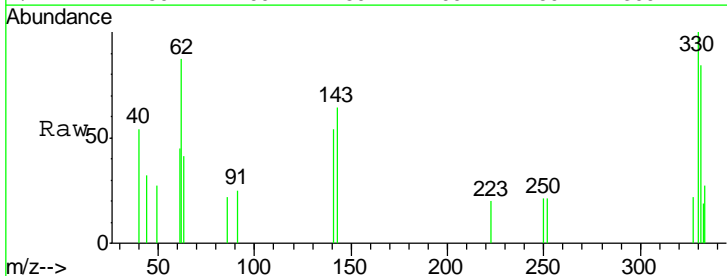
Instrument :  
 BNA\_G  
 ClientSampled :  
 EFFWWDL

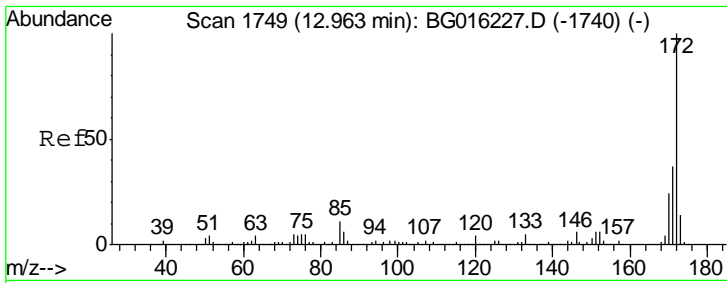
Tgt Ion	Resp	Lower	Upper
164	100		
162	95.7	77.3	115.9
160	43.5	36.7	55.1



#41  
 2,4,6-Tribromophenol  
 Concen: 1.14 ng  
 RT: 15.79 min Scan# 2230  
 Delta R.T. -0.02 min  
 Lab File: BG016575.D  
 Acq: 21 Apr 2015 7:36

Tgt Ion	Resp	Lower	Upper
330	100		
332	99.7	75.8	113.6
141	53.0	46.6	69.8

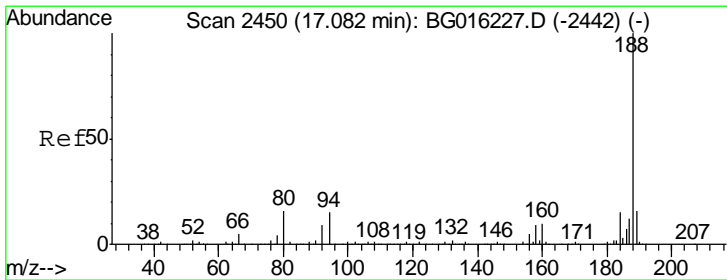
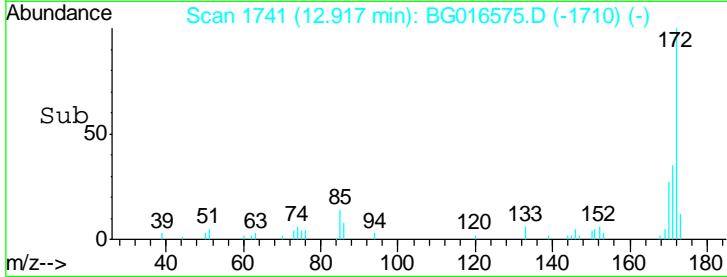
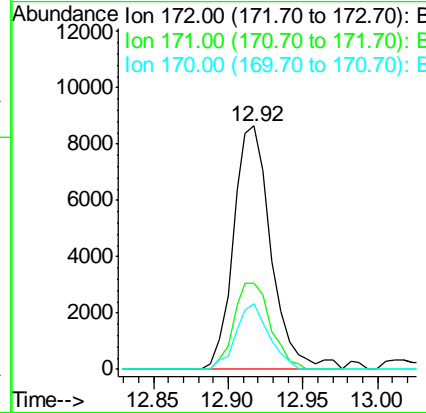
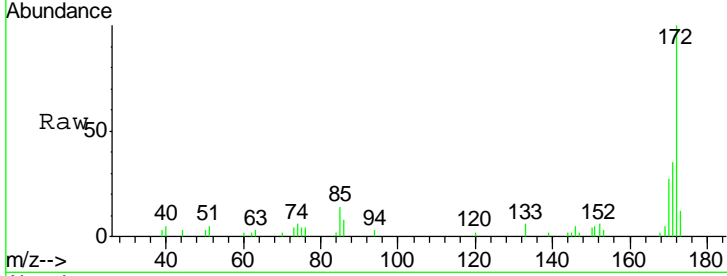




#44  
 2-Fluorobiphenyl  
 Concen: 1.63 ng  
 RT: 12.92 min Scan# 1741  
 Delta R.T. -0.02 min  
 Lab File: BG016575.D  
 Acq: 21 Apr 2015 7:36

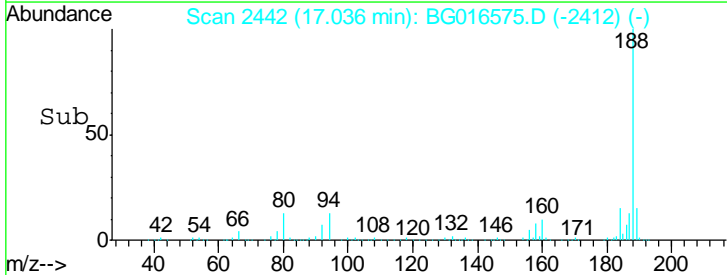
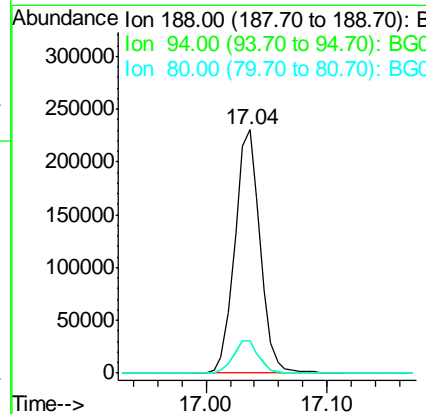
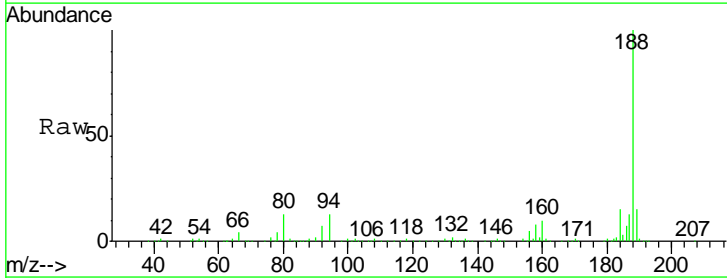
Instrument :  
 BNA\_G  
 ClientSampled :  
 EFFWDL

Tgt Ion	Resp	Lower	Upper
172	15166		
171	35.4	29.6	44.4
170	27.1	19.4	29.2

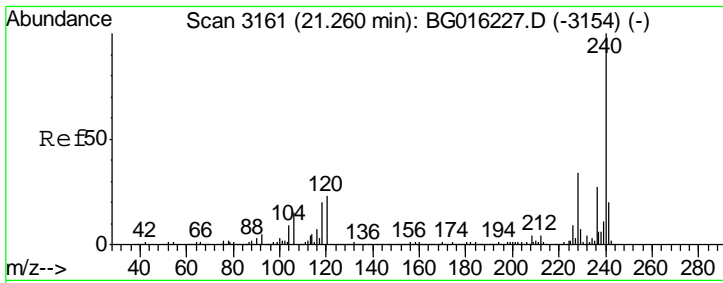


#63  
 Phenanthrene-d10  
 Concen: 20.00 ng  
 RT: 17.04 min Scan# 2442  
 Delta R.T. -0.03 min  
 Lab File: BG016575.D  
 Acq: 21 Apr 2015 7:36

Tgt Ion	Resp	Lower	Upper
188	335881		
94	13.2	12.2	18.4
80	13.1	12.8	19.2



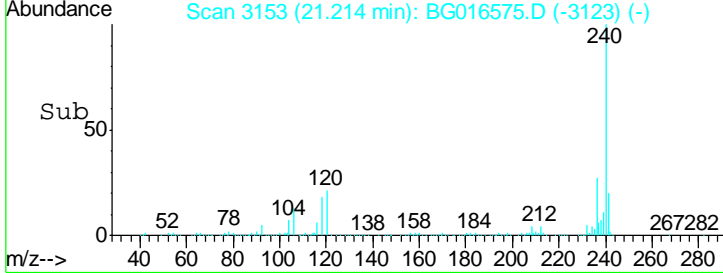
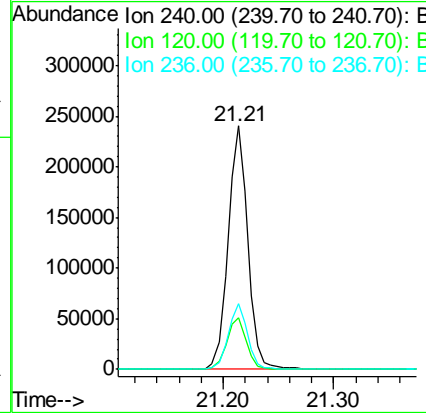
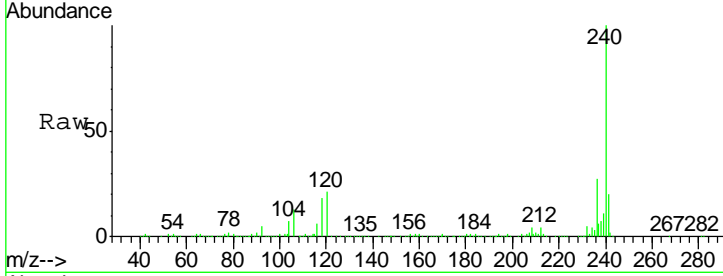




#75  
 Chrysene-d12  
 Concen: 20.00 ng  
 RT: 21.21 min Scan# 3153  
 Delta R.T. -0.03 min  
 Lab File: BG016575.D  
 Acq: 21 Apr 2015 7:36

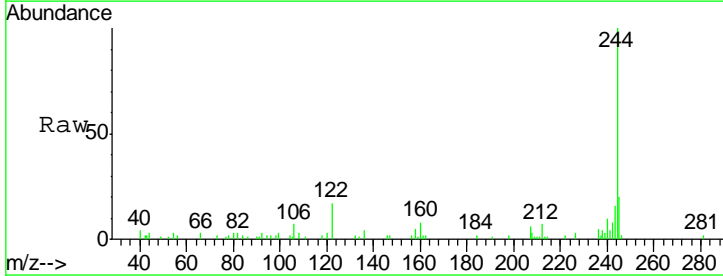
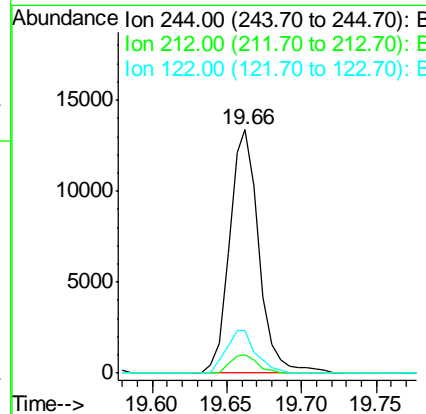
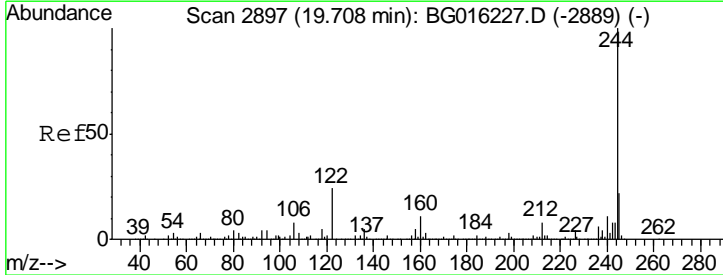
**Instrument :**  
 BNA\_G  
**ClientSampleId :**  
 EFFWDL

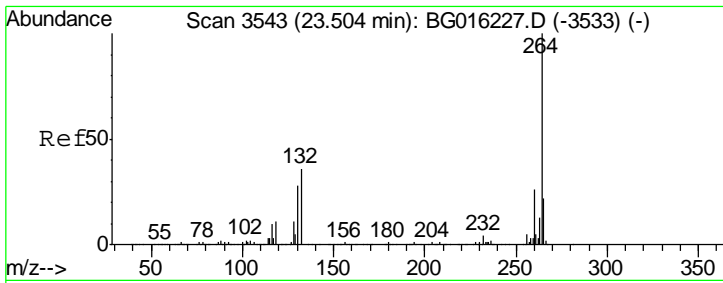
Tgt Ion	Resp	Lower	Upper
240	299302		
120	21.0	18.6	28.0
236	26.7	21.7	32.5



#78  
 Terphenyl-d14  
 Concen: 1.44 ng  
 RT: 19.66 min Scan# 2889  
 Delta R.T. -0.03 min  
 Lab File: BG016575.D  
 Acq: 21 Apr 2015 7:36

Tgt Ion	Resp	Lower	Upper
244	18416		
212	7.3	6.6	9.8
122	17.5	19.1	28.7#





#86  
 Perylene-d12  
 Concen: 20.00 ng  
 RT: 23.43 min Scan# 3531  
 Delta R.T. -0.03 min  
 Lab File: BG016575.D  
 Acq: 21 Apr 2015 7:36

**Instrument :**  
 BNA\_G  
**ClientSampled :**  
 EFFWDL

Tot Ion: 264 Resp: 286455

Ion	Ratio	Lower	Upper
264	100		
260	25.1	20.4	30.6
265	22.1	17.2	25.8

