

Data Path : Z:\HPCHEM1\BNA_G\DATA\BG042215\
 Data File : BG016625.D
 Acq On : 22 Apr 2015 18:30
 Operator : TP/IZ
 Sample : G1945-02
 Misc :
 ALS Vial : 10 Sample Multiplier: 1

Instrument :
 BNA_G
 ClientSampleId :
 MW-53

Quant Time: Apr 23 02:18:29 2015
 Quant Method : Z:\HPCHEM1\BNA_G\METHODS\8270-BG042115.M
 Quant Title : ASP BNA STANDARDS FOR 5 POINT CALIBRATION
 QLast Update : Thu Apr 23 01:45:23 2015
 Response via : Initial Calibration

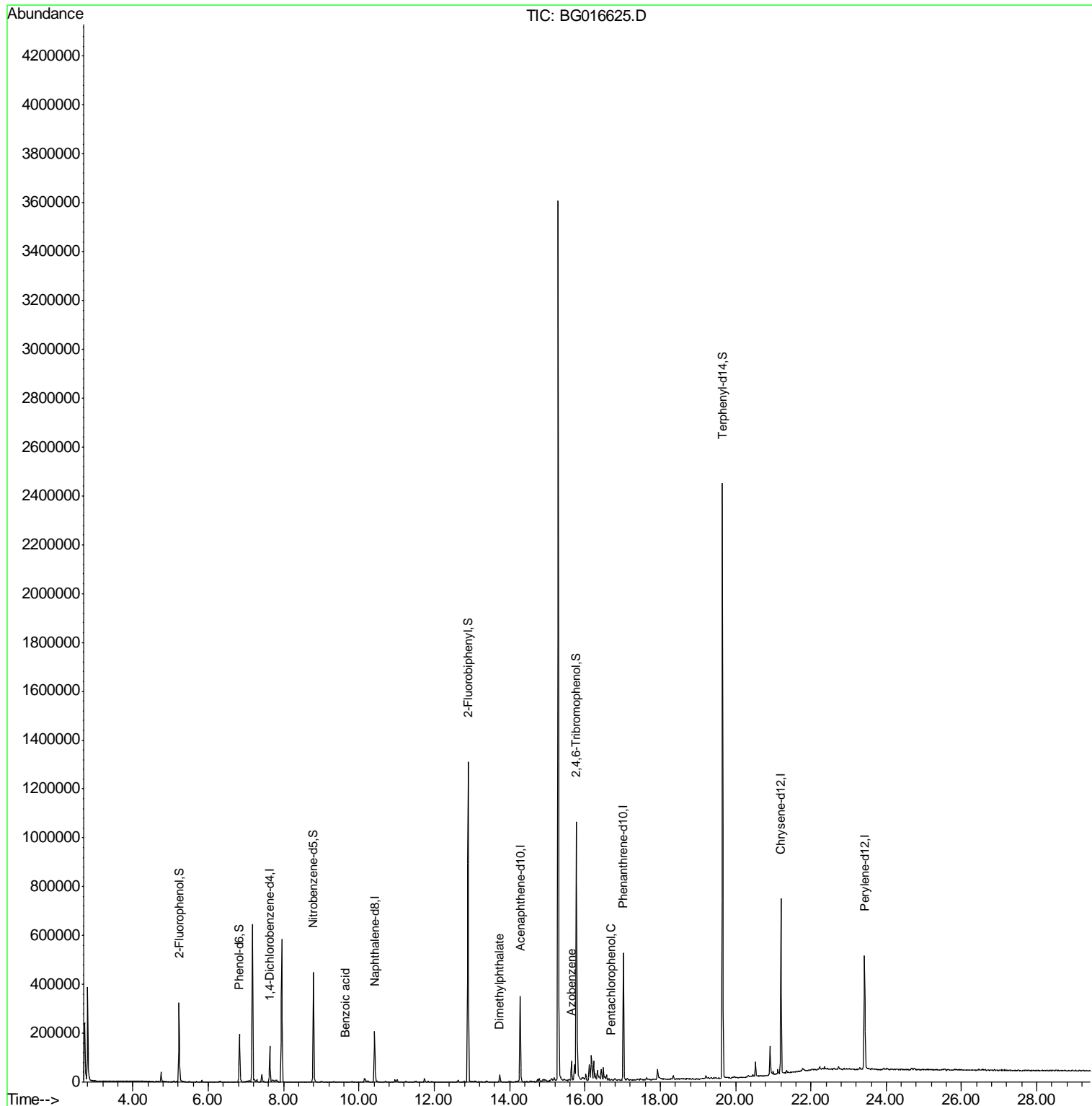
Internal Standards	R.T.	QIon	Response	Conc	Units	Dev(Min)
1) 1,4-Dichlorobenzene-d4	7.63	152	41692	20.00	ng	0.00
21) Naphthalene-d8	10.42	136	186380	20.00	ng	0.00
38) Acenaphthene-d10	14.28	164	119805	20.00	ng	0.00
63) Phenanthrene-d10	17.02	188	294091	20.00	ng	0.00
75) Chrysene-d12	21.20	240	289944	20.00	ng	0.00
86) Perylene-d12	23.42	264	268549	20.00	ng	0.00
System Monitoring Compounds						
5) 2-Fluorophenol	5.23	112	157517	60.55	ng	0.00
7) Phenol-d6	6.83	99	138801	38.19	ng	0.00
23) Nitrobenzene-d5	8.79	82	270259	89.29	ng	0.00
41) 2,4,6-Tribromophenol	15.77	330	144956	178.14	ng	0.00
44) 2-Fluorobiphenyl	12.90	172	665155	91.95	ng	0.00
78) Terphenyl-d14	19.65	244	900854	74.85	ng	0.00
Target Compounds						
32) Benzoic acid	9.66	122	55	7.04	ng	# 1
49) Dimethylphthalate	13.75	163	21247	2.40	ng	# 95
62) Azobenzene	15.65	77	19775	2.26	ng	# 1
69) Pentachlorophenol	16.69	266	63	6.28	ng	# 18

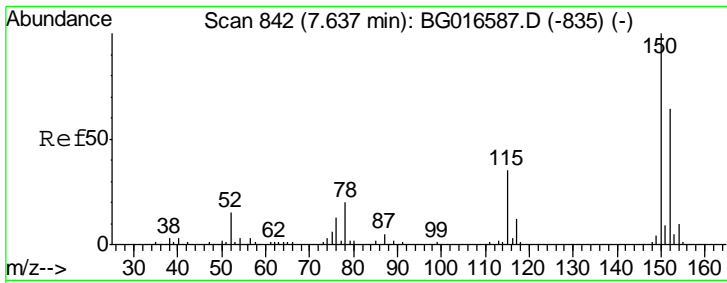
(#) = qualifier out of range (m) = manual integration (+) = signals summed

Data Path : Z:\HPCHEM1\BNA_G\DATA\BG042215\
 Data File : BG016625.D
 Acq On : 22 Apr 2015 18:30
 Operator : TP/IZ
 Sample : G1945-02
 Misc :
 ALS Vial : 10 Sample Multiplier: 1

Instrument :
 BNA_G
 ClientSampled :
 MW-53

Quant Time: Apr 23 02:18:29 2015
 Quant Method : Z:\HPCHEM1\BNA_G\METHODS\8270-BG042115.M
 Quant Title : ASP BNA STANDARDS FOR 5 POINT CALIBRATION
 QLast Update : Thu Apr 23 01:45:23 2015
 Response via : Initial Calibration

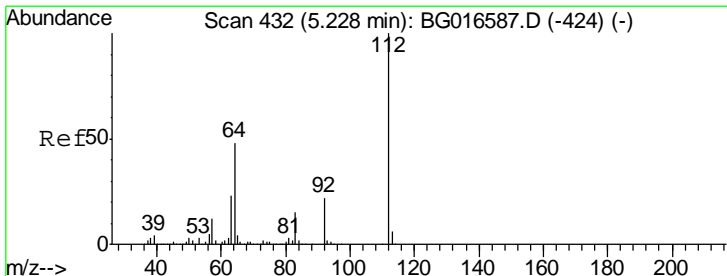
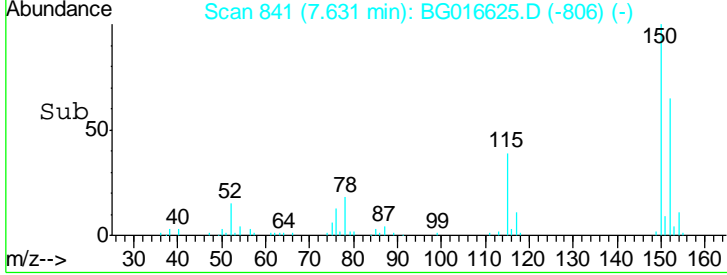
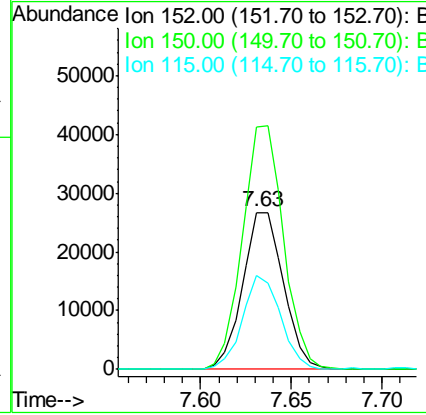
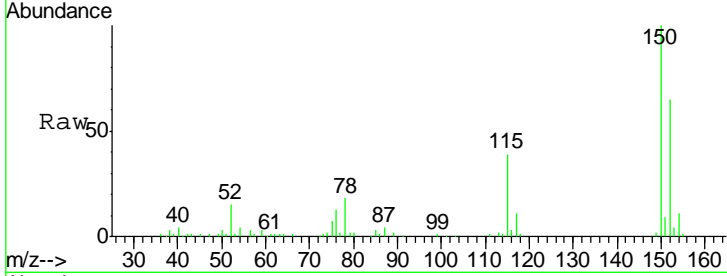




#1
 1,4-Dichlorobenzene-d4
 Concen: 20.00 ng
 RT: 7.63 min Scan# 841
 Delta R.T. 0.00 min
 Lab File: BG016625.D
 Acq: 22 Apr 2015 18:30

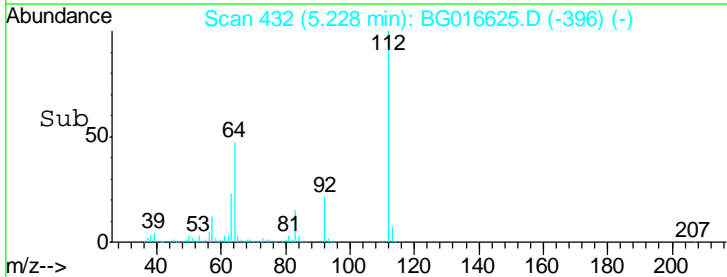
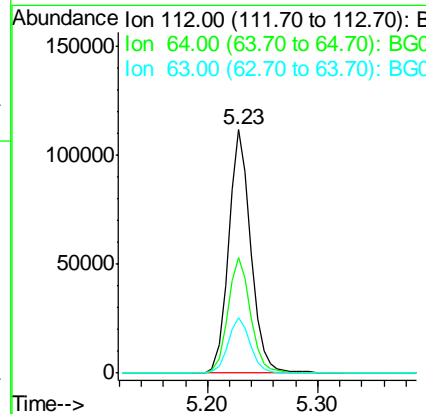
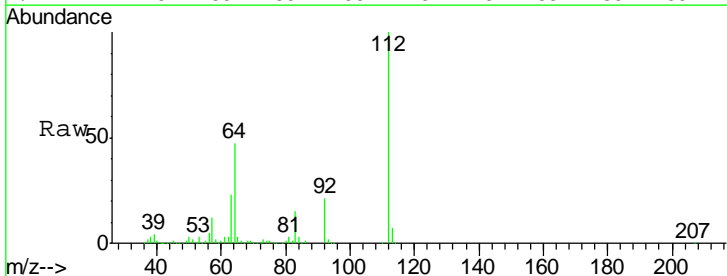
Instrument :
 BNA_G
ClientSampled :
 MW-53

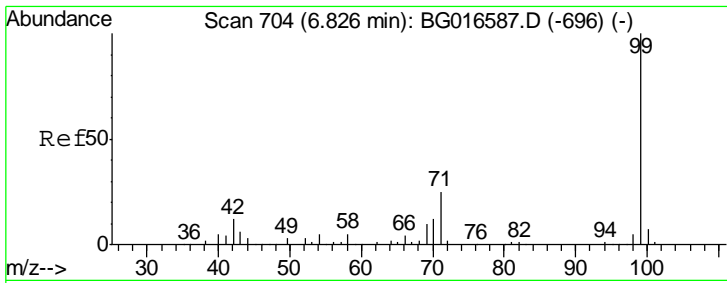
Tgt Ion	Resp	Lower	Upper
152	41692		
152	100		
150	154.9	125.5	188.3
115	59.7	44.5	66.7



#5
 2-Fluorophenol
 Concen: 60.55 ng
 RT: 5.23 min Scan# 432
 Delta R.T. 0.01 min
 Lab File: BG016625.D
 Acq: 22 Apr 2015 18:30

Tgt Ion	Resp	Lower	Upper
112	157517		
112	100		
64	47.5	38.5	57.7
63	22.7	18.2	27.4

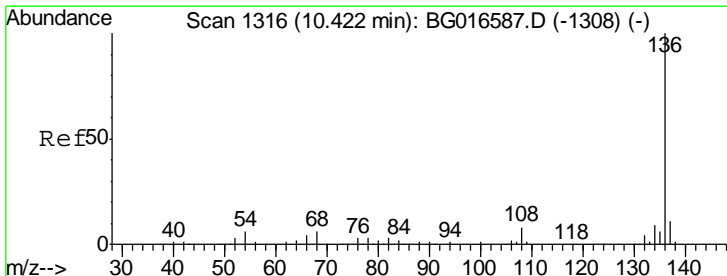
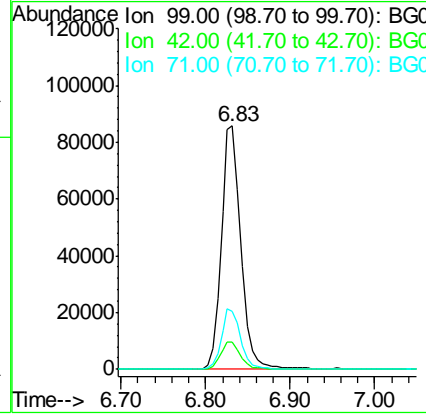
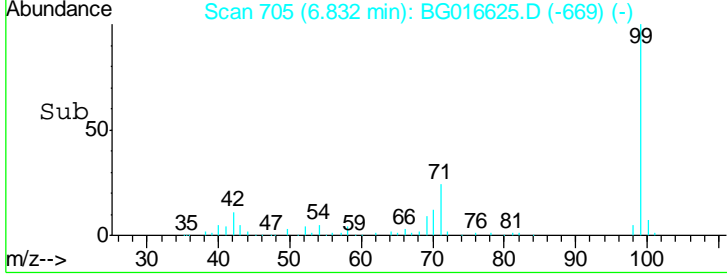
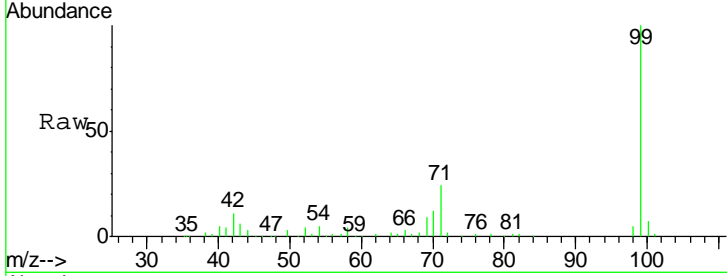




#7
 Phenol-d6
 Concen: 38.19 ng
 RT: 6.83 min Scan# 705
 Delta R.T. 0.01 min
 Lab File: BG016625.D
 Acq: 22 Apr 2015 18:30

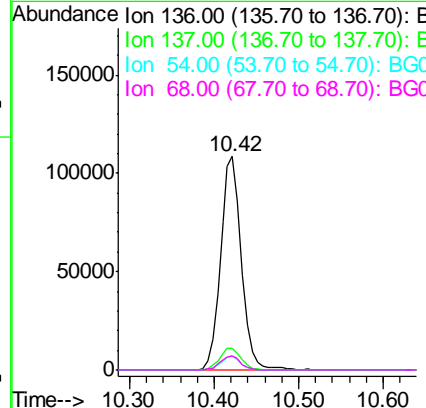
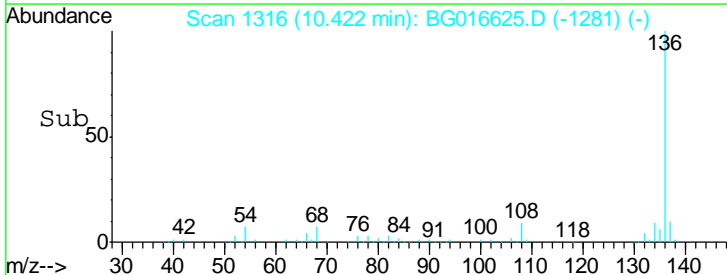
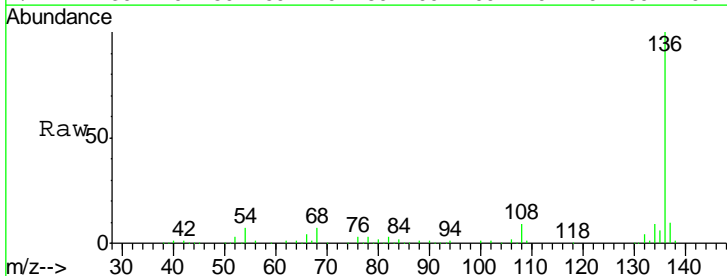
Instrument :
 BNA_G
ClientSampled :
 MW-53

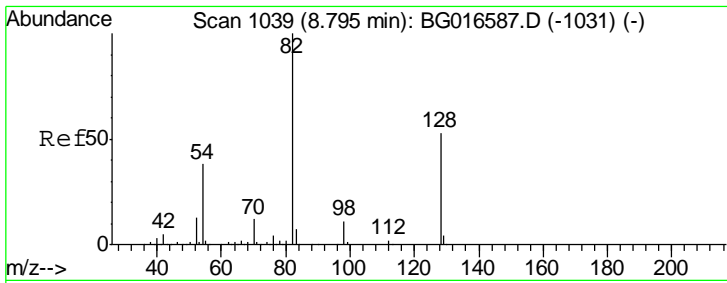
Tgt Ion	Resp	Lower	Upper
99	138801		
42	11.2	9.5	14.3
71	24.0	20.2	30.2



#21
 Naphthalene-d8
 Concen: 20.00 ng
 RT: 10.42 min Scan# 1316
 Delta R.T. 0.00 min
 Lab File: BG016625.D
 Acq: 22 Apr 2015 18:30

Tgt Ion	Resp	Lower	Upper
136	186380		
137	10.5	8.8	13.2
54	6.6	4.9	7.3
68	6.6	4.9	7.3

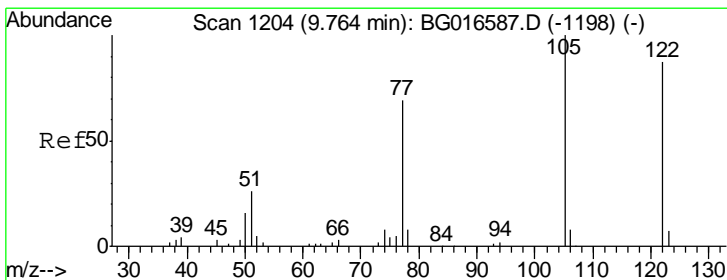
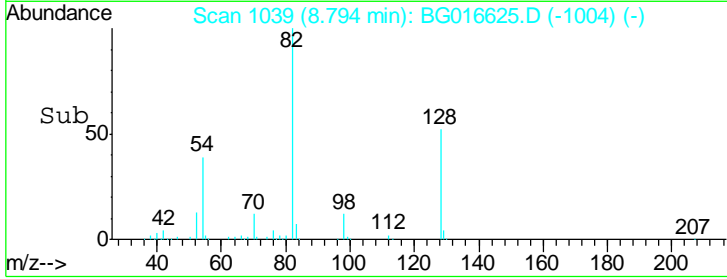
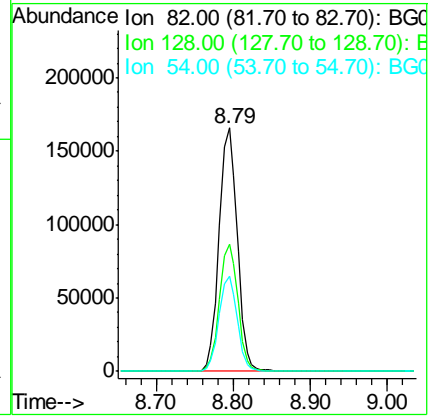
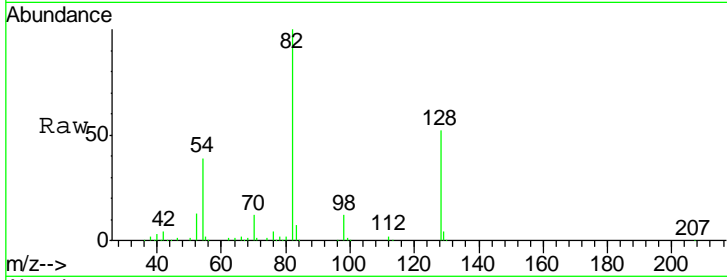




#23
 Nitrobenzene-d5
 Concen: 89.29 ng
 RT: 8.79 min Scan# 1039
 Delta R.T. 0.00 min
 Lab File: BG016625.D
 Acq: 22 Apr 2015 18:30

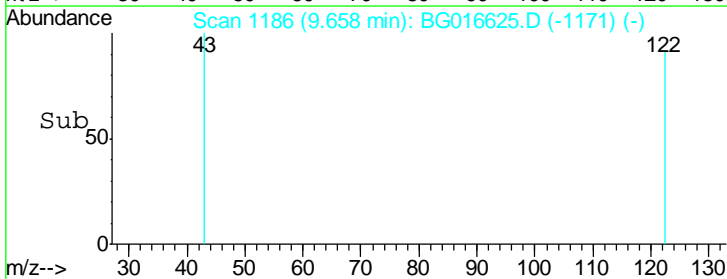
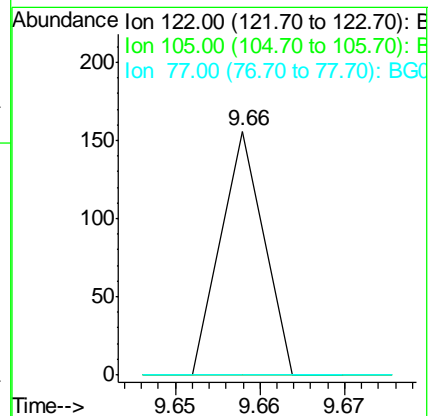
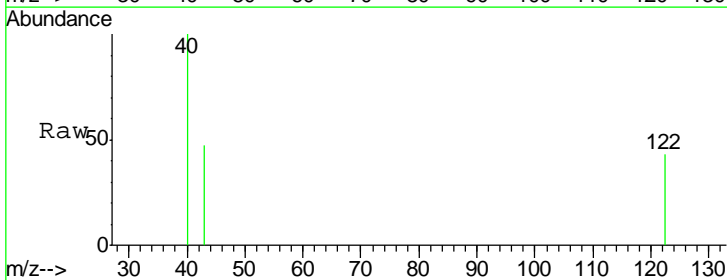
Instrument :
 BNA_G
ClientSampled :
 MW-53

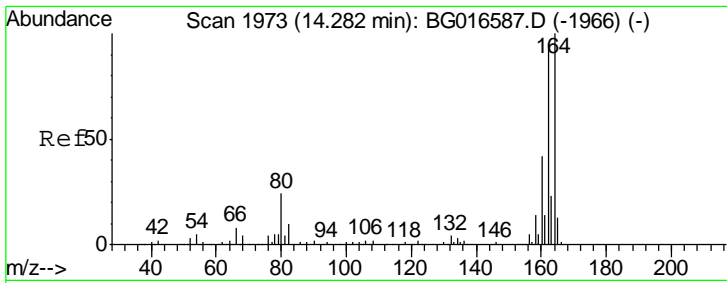
Tgt Ion	Resp	Lower	Upper
82	100		
128	52.0	42.7	64.1
54	39.2	30.6	45.8



#32
 Benzoic acid
 Concen: 7.04 ng
 RT: 9.66 min Scan# 1186
 Delta R.T. -0.11 min
 Lab File: BG016625.D
 Acq: 22 Apr 2015 18:30

Tgt Ion	Resp	Lower	Upper
122	100		
105	0.0	95.5	135.5#
77	0.0	60.2	100.2#

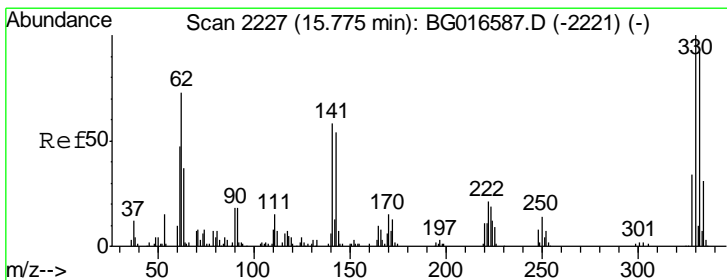
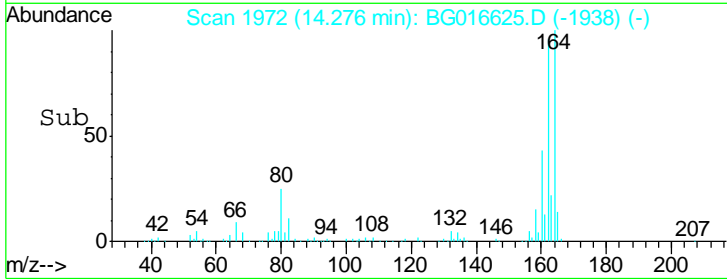
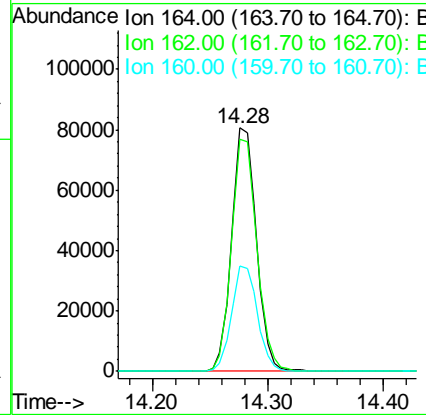
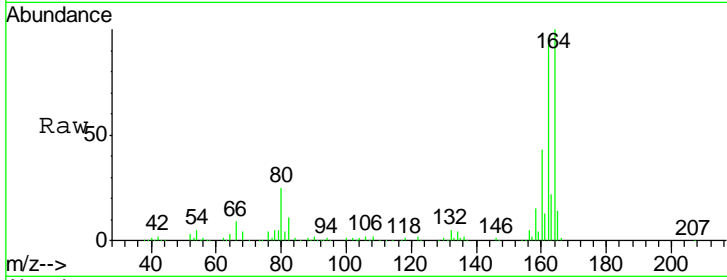




#38
 Acenaphthene-d10
 Concen: 20.00 ng
 RT: 14.28 min Scan# 1972
 Delta R.T. -0.00 min
 Lab File: BG016625.D
 Acq: 22 Apr 2015 18:30

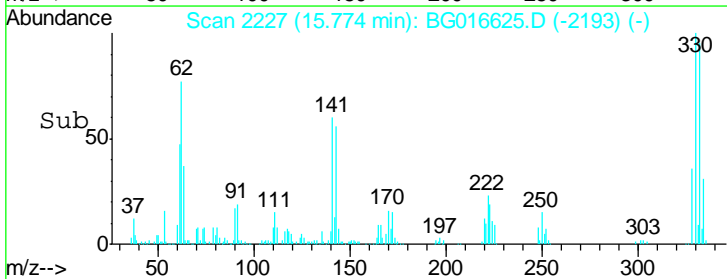
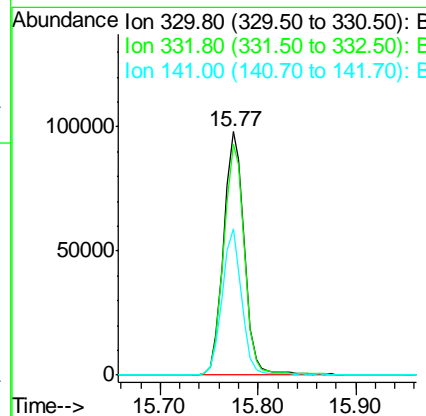
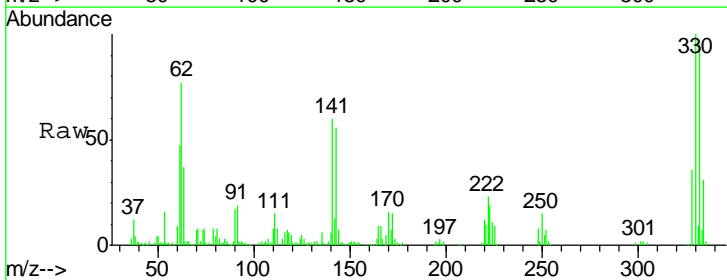
Instrument :
 BNA_G
 ClientSampled :
 MW-53

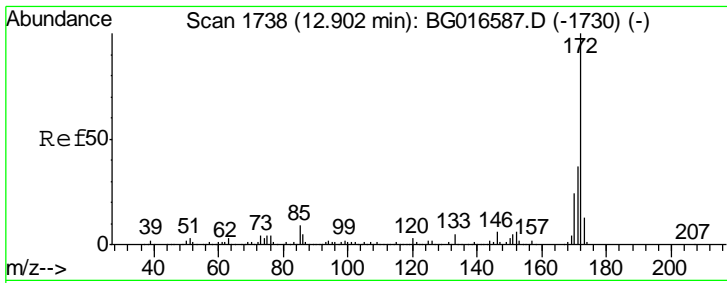
Tgt Ion	Resp	Lower	Upper
164	119805		
162	95.6	75.8	113.6
160	43.3	33.8	50.6



#41
 2,4,6-Tribromophenol
 Concen: 178.14 ng
 RT: 15.77 min Scan# 2227
 Delta R.T. -0.00 min
 Lab File: BG016625.D
 Acq: 22 Apr 2015 18:30

Tgt Ion	Resp	Lower	Upper
330	144956		
332	95.5	76.6	114.8
141	56.6	45.9	68.9

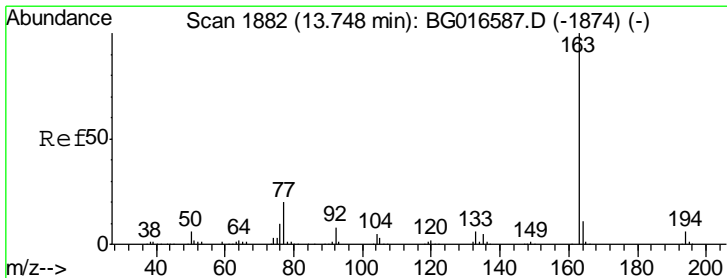
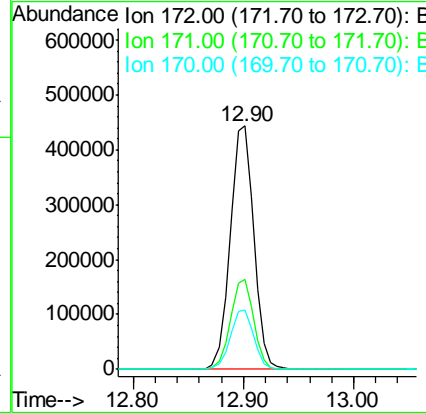
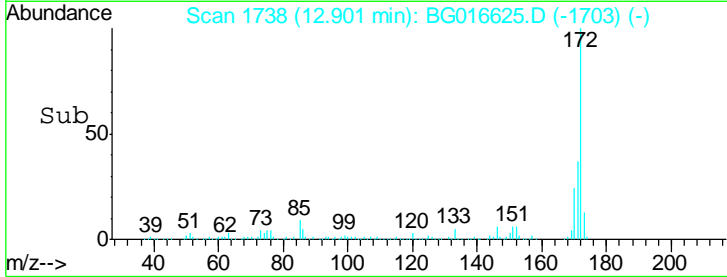
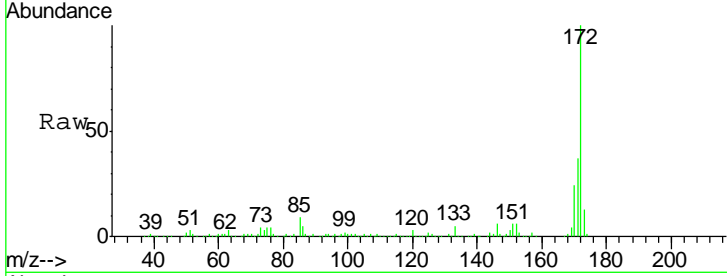




#44
 2-Fluorobiphenyl
 Concen: 91.95 ng
 RT: 12.90 min Scan# 1738
 Delta R.T. 0.00 min
 Lab File: BG016625.D
 Acq: 22 Apr 2015 18:30

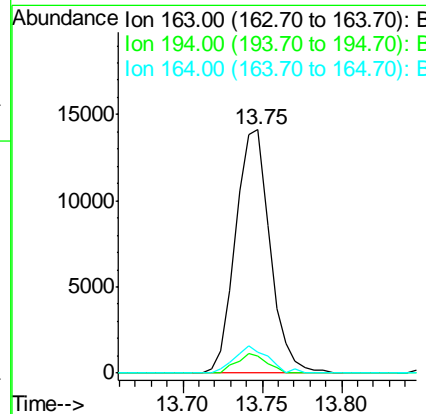
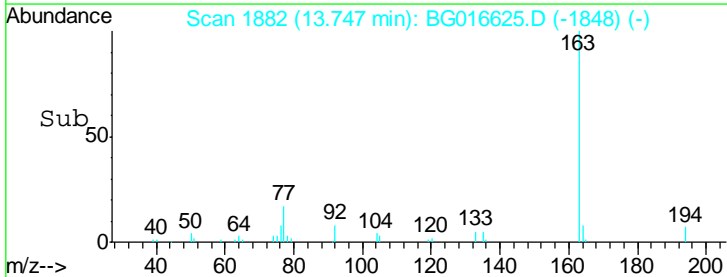
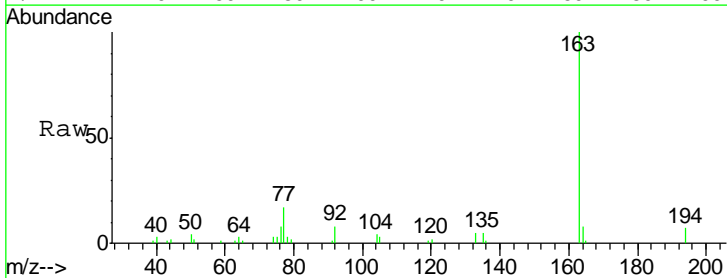
Instrument :
 BNA_G
 ClientSampled :
 MW-53

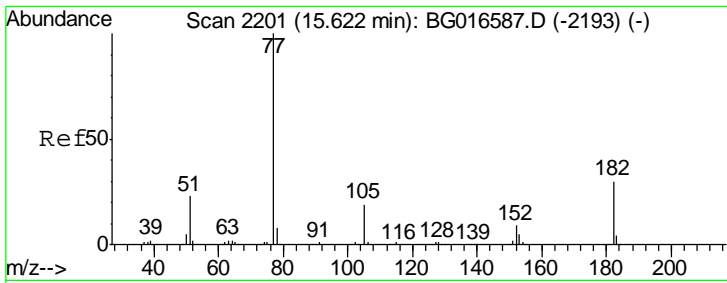
Tgt Ion	Resp	Lower	Upper
172	100		
171	37.1	29.6	44.4
170	24.3	19.4	29.0



#49
 Dimethylphthalate
 Concen: 2.40 ng
 RT: 13.75 min Scan# 1882
 Delta R.T. -0.00 min
 Lab File: BG016625.D
 Acq: 22 Apr 2015 18:30

Tgt Ion	Resp	Lower	Upper
163	100		
194	6.7	4.9	7.3
164	8.4	8.6	12.8#

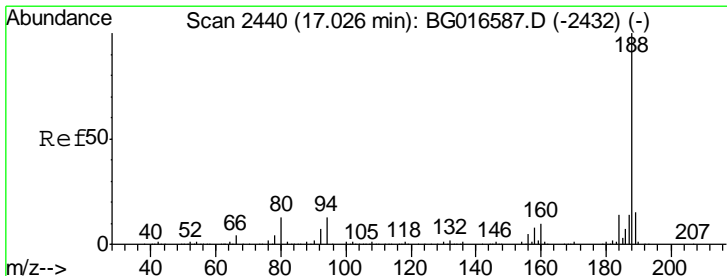
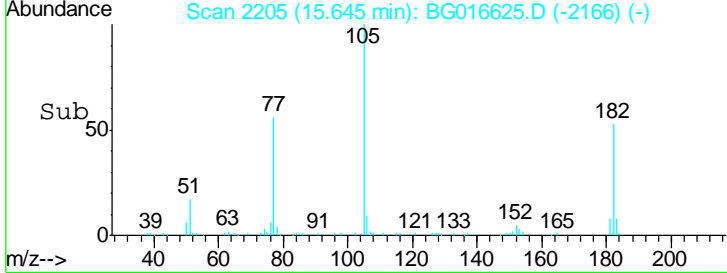
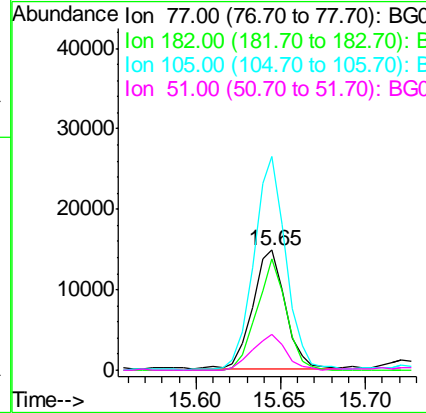
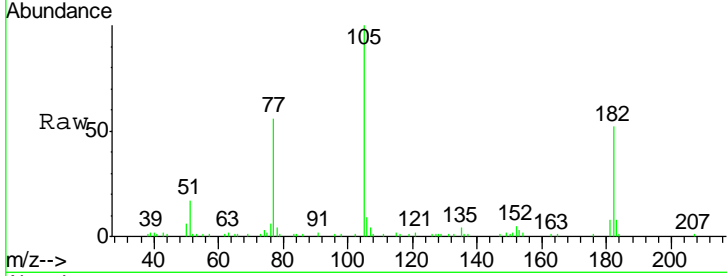




#62
 Azobenzene
 Concen: 2.26 ng
 RT: 15.65 min Scan# 2205
 Delta R.T. 0.03 min
 Lab File: BG016625.D
 Acq: 22 Apr 2015 18:30

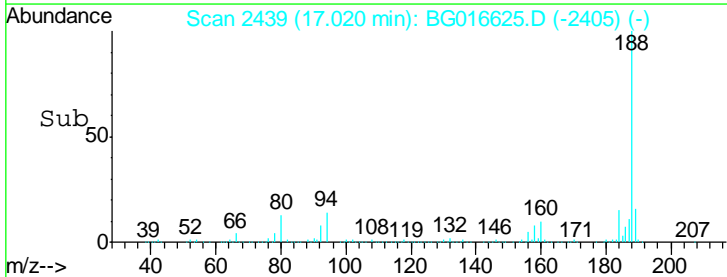
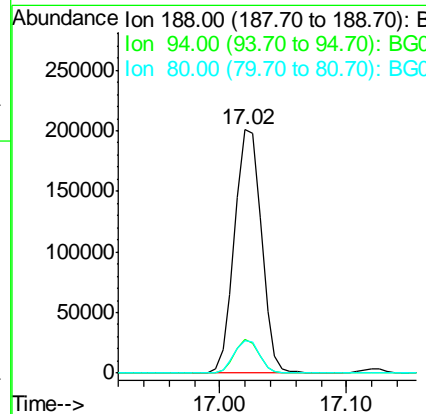
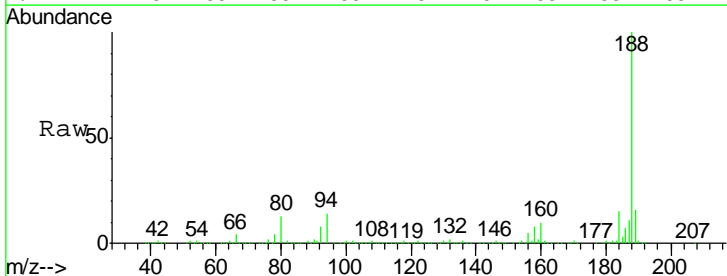
Instrument :
 BNA_G
 ClientSampled :
 MW-53

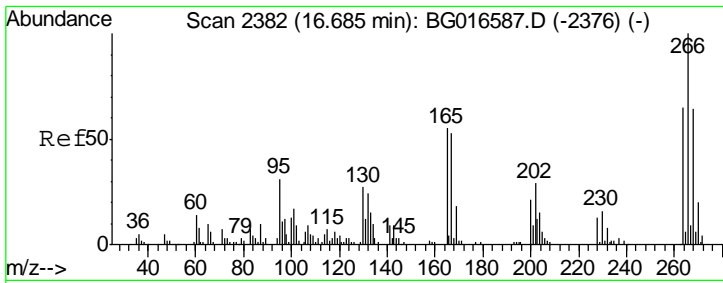
Tgt Ion	Resp	Lower	Upper
77	19775		
182	93.4	9.9	49.9#
105	178.3	0.0	38.8#
51	29.5	2.7	42.7



#63
 Phenanthrene-d10
 Concen: 20.00 ng
 RT: 17.02 min Scan# 2439
 Delta R.T. -0.00 min
 Lab File: BG016625.D
 Acq: 22 Apr 2015 18:30

Tgt Ion	Resp	Lower	Upper
188	294091		
94	13.6	10.5	15.7
80	13.4	10.6	16.0



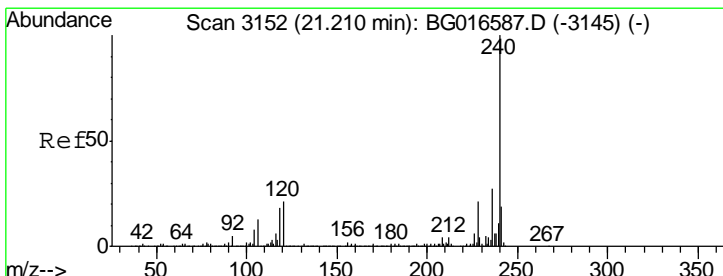
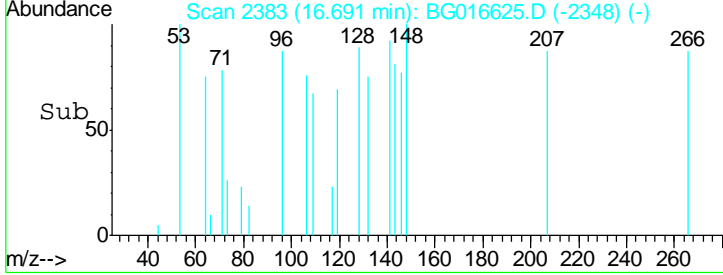
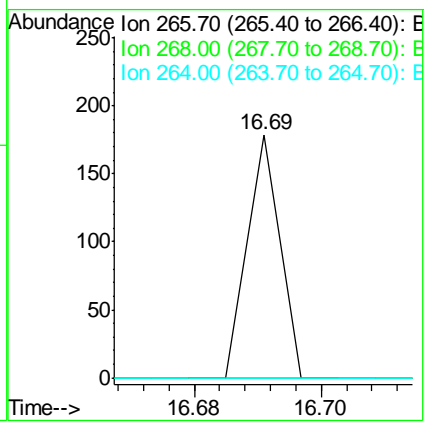
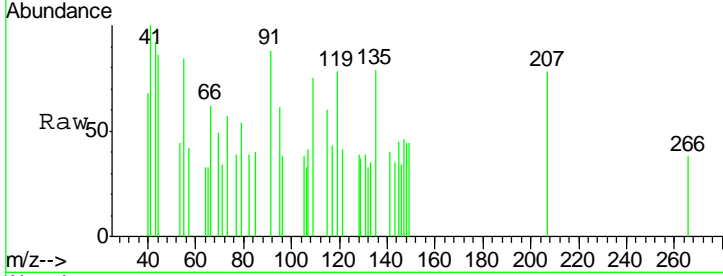


#69
 Pentachlorophenol
 Concen: 6.28 ng
 RT: 16.69 min Scan# 2383
 Delta R.T. 0.00 min
 Lab File: BG016625.D
 Acq: 22 Apr 2015 18:30

Instrument :
 BNA_G
 ClientSampled :
 MW-53

Tgt Ion: 266 Resp: 63

Ion	Ratio	Lower	Upper
266	100		
268	0.0	51.3	76.9#
264	0.0	52.2	78.4#



#75
 Chrysene-d12
 Concen: 20.00 ng
 RT: 21.20 min Scan# 3151
 Delta R.T. -0.01 min
 Lab File: BG016625.D
 Acq: 22 Apr 2015 18:30

Tgt Ion: 240 Resp: 289944

Ion	Ratio	Lower	Upper
240	100		
120	20.4	16.7	25.1
236	26.8	21.7	32.5

