

Data Path : Z:\HPCHEM1\BNA_G\DATA\BG042215\
 Data File : BG016630.D
 Acq On : 22 Apr 2015 21:24
 Operator : TP/IZ
 Sample : G1948-04
 Misc :
 ALS Vial : 15 Sample Multiplier: 1

Instrument :
 BNA_G
 ClientSampleId :
 MW-03

Quant Time: Apr 23 02:29:11 2015
 Quant Method : Z:\HPCHEM1\BNA_G\METHODS\8270-BG042115.M
 Quant Title : ASP BNA STANDARDS FOR 5 POINT CALIBRATION
 QLast Update : Thu Apr 23 01:45:23 2015
 Response via : Initial Calibration

Internal Standards	R.T.	QIon	Response	Conc	Units	Dev(Min)
1) 1,4-Dichlorobenzene-d4	7.64	152	61664	20.00	ng	0.00
21) Naphthalene-d8	10.42	136	292188	20.00	ng	0.00
38) Acenaphthene-d10	14.28	164	185310	20.00	ng	0.00
63) Phenanthrene-d10	17.03	188	350895	20.00	ng	0.00
75) Chrysene-d12	21.20	240	296248	20.00	ng	0.00
86) Perylene-d12	23.42	264	283460	20.00	ng	0.00

System Monitoring Compounds

5) 2-Fluorophenol	5.23	112	230925	60.02	ng	0.00
7) Phenol-d6	6.83	99	201440	37.47	ng	0.00
23) Nitrobenzene-d5	8.79	82	429347	90.48	ng	0.00
41) 2,4,6-Tribromophenol	15.78	330	167922	133.42	ng	0.00
44) 2-Fluorobiphenyl	12.90	172	985555	88.08	ng	0.00
78) Terphenyl-d14	19.66	244	883069	71.81	ng	0.00

Target Compounds

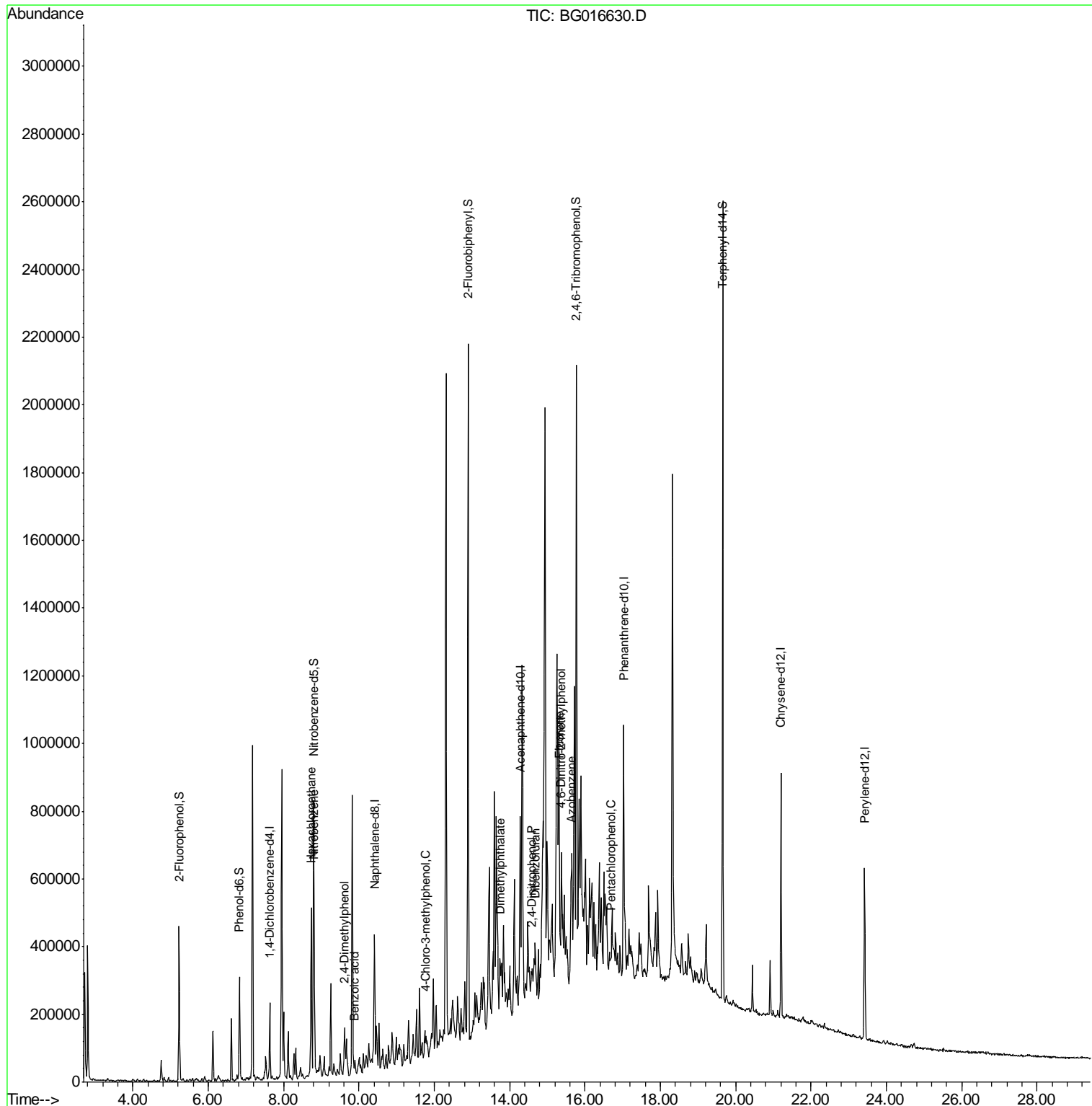
						Qvalue
18) Hexachloroethane	8.74	117	70699	40.33	ng	# 1
24) Nitrobenzene	8.82	77	12515	2.53	ng	# 7
27) 2,4-Dimethylphenol	9.62	122	19674	4.24	ng	97
32) Benzoic acid	9.88	122	1463	8.01	ng	89
36) 4-Chloro-3-methylphenol	11.78	107	13012	2.81	ng	# 15
49) Dimethylphthalate	13.74	163	32302	2.36	ng	# 90
53) 2,4-Dinitrophenol	14.58	184	3990	10.67	ng	97
54) Dibenzofuran	14.68	168	43278	2.66	ng	# 87
57) Fluorene	15.33	166	33515	2.33	ng	# 93
62) Azobenzene	15.64	77	45748	3.38	ng	# 1
64) 4,6-Dinitro-2-methylphenol	15.39	198	230	4.21	ng	# 1
69) Pentachlorophenol	16.70	266	383	6.47	ng	90

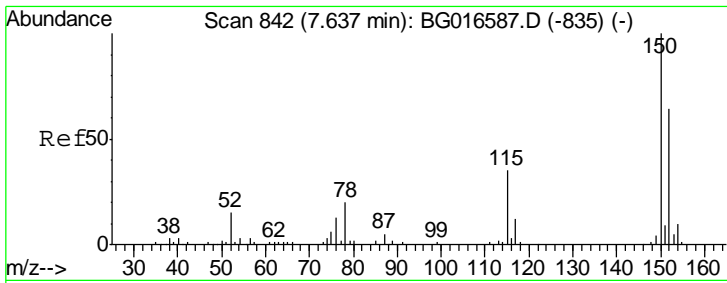
(#) = qualifier out of range (m) = manual integration (+) = signals summed

Data Path : Z:\HPCHEM1\BNA_G\DATA\BG042215\
 Data File : BG016630.D
 Acq On : 22 Apr 2015 21:24
 Operator : TP/IZ
 Sample : G1948-04
 Misc :
 ALS Vial : 15 Sample Multiplier: 1

Instrument :
 BNA_G
 ClientSampled :
 MW-03

Quant Time: Apr 23 02:29:11 2015
 Quant Method : Z:\HPCHEM1\BNA_G\METHODS\8270-BG042115.M
 Quant Title : ASP BNA STANDARDS FOR 5 POINT CALIBRATION
 QLast Update : Thu Apr 23 01:45:23 2015
 Response via : Initial Calibration

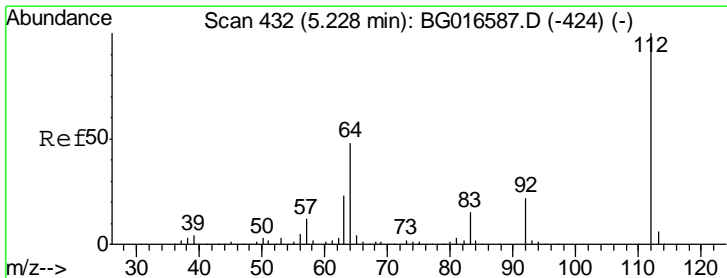
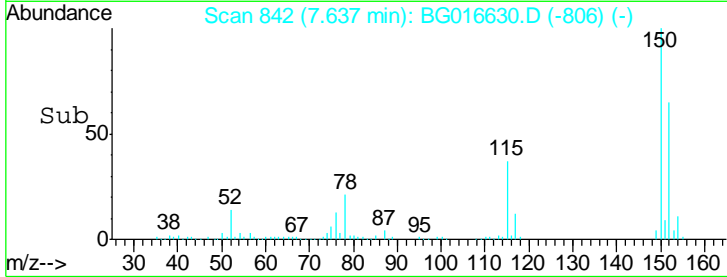
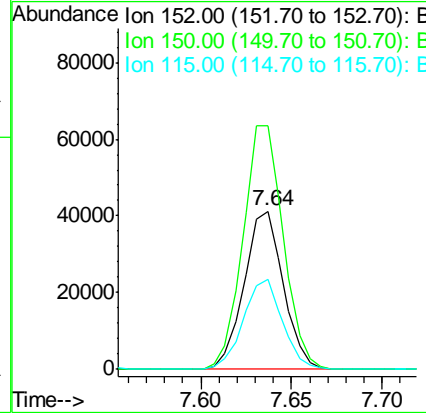
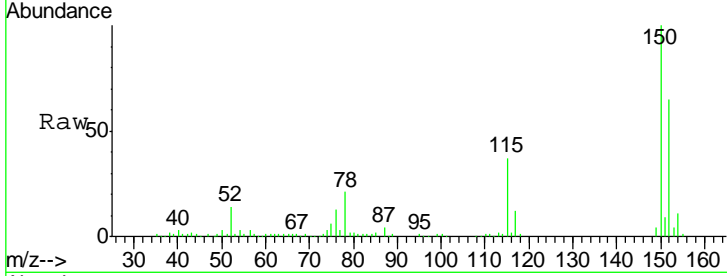




#1
 1,4-Dichlorobenzene-d4
 Concen: 20.00 ng
 RT: 7.64 min Scan# 842
 Delta R.T. 0.01 min
 Lab File: BG016630.D
 Acq: 22 Apr 2015 21:24

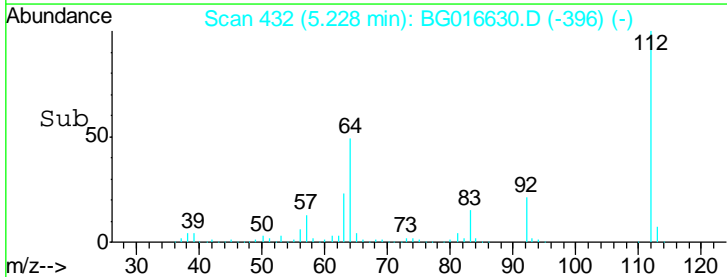
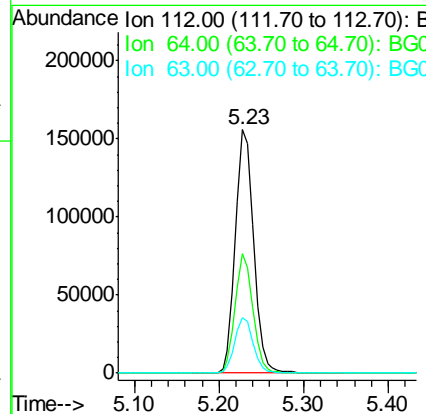
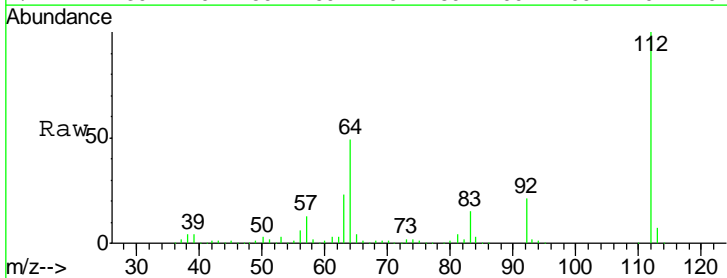
Instrument :
 BNA_G
 ClientSampled :
 MW-03

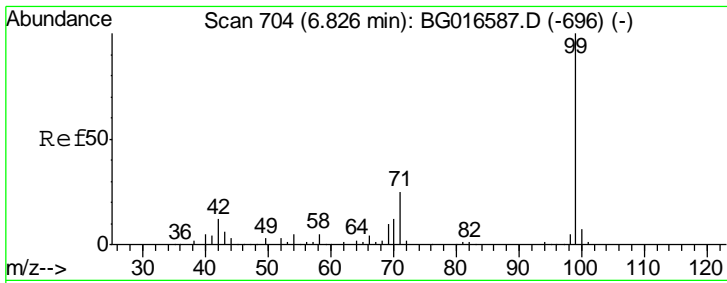
Tgt Ion	Resp	Lower	Upper
152	61664		
150	153.8	125.5	188.3
115	57.2	44.5	66.7



#5
 2-Fluorophenol
 Concen: 60.02 ng
 RT: 5.23 min Scan# 432
 Delta R.T. 0.01 min
 Lab File: BG016630.D
 Acq: 22 Apr 2015 21:24

Tgt Ion	Resp	Lower	Upper
112	230925		
64	49.1	38.5	57.7
63	23.0	18.2	27.4

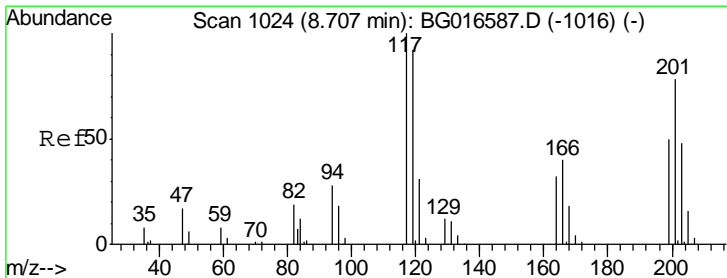
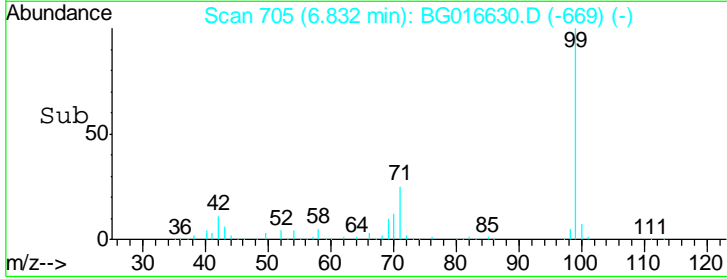
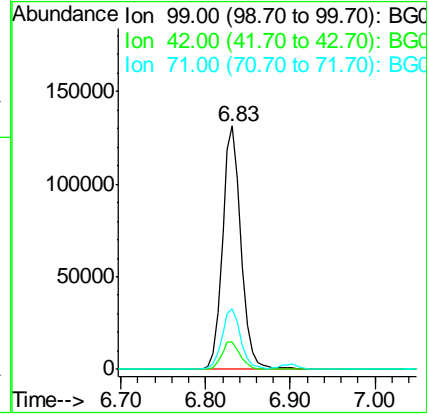
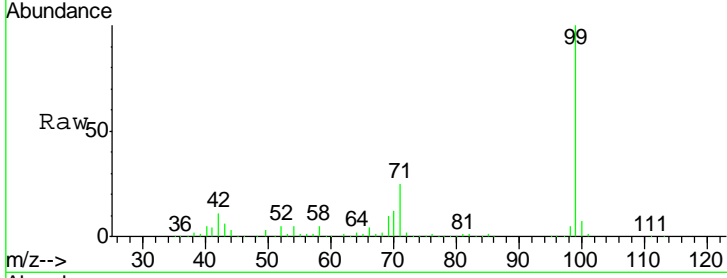




#7
 Phenol-d6
 Concen: 37.47 ng
 RT: 6.83 min Scan# 705
 Delta R.T. 0.01 min
 Lab File: BG016630.D
 Acq: 22 Apr 2015 21:24

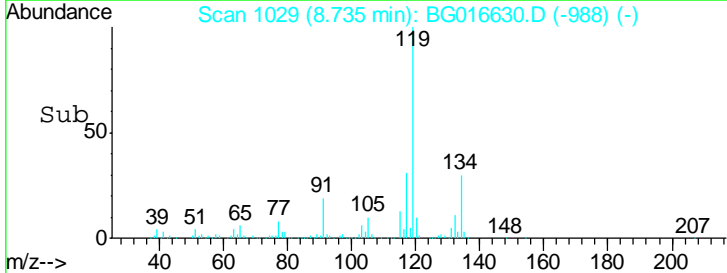
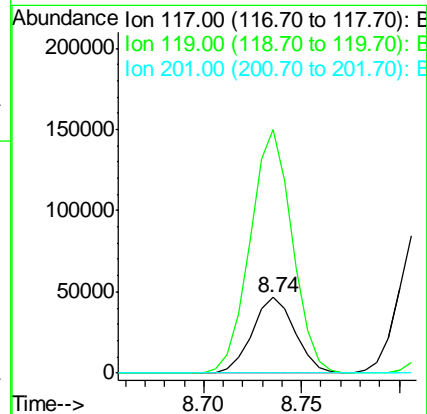
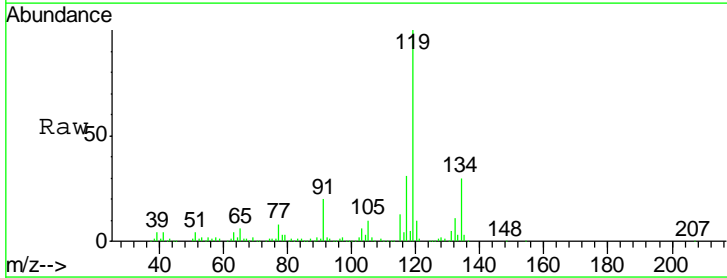
Instrument :
 BNA_G
 ClientSampled :
 MW-03

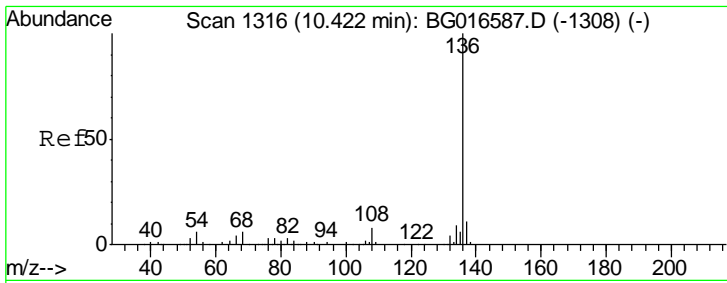
Tgt Ion	Resp	Lower	Upper
99	100		
42	11.5	9.5	14.3
71	25.0	20.2	30.2



#18
 Hexachloroethane
 Concen: 40.33 ng
 RT: 8.74 min Scan# 1029
 Delta R.T. 0.04 min
 Lab File: BG016630.D
 Acq: 22 Apr 2015 21:24

Tgt Ion	Resp	Lower	Upper
117	100		
119	322.6	73.8	110.8#
201	0.0	62.2	93.2#

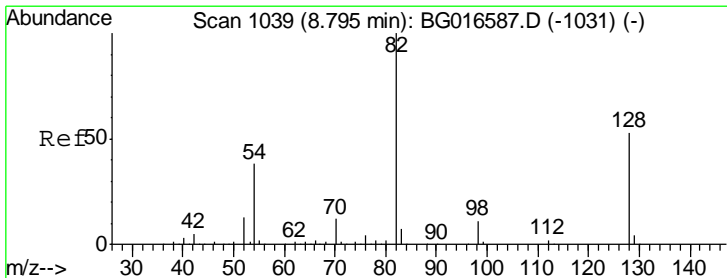
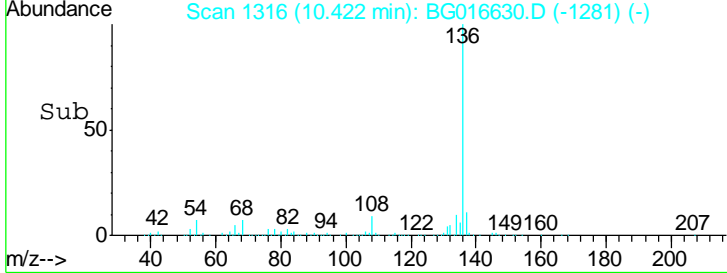
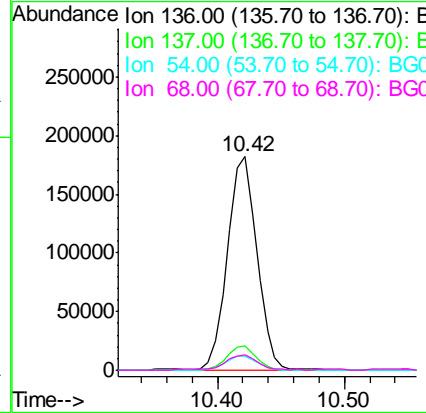
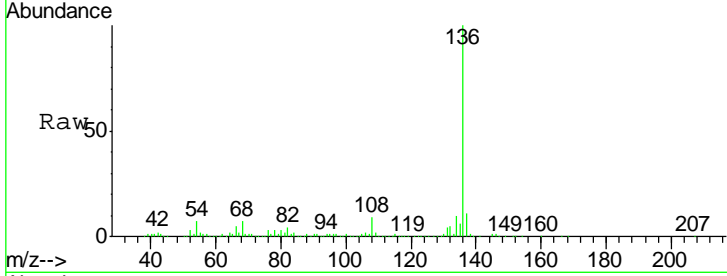




#21
 Naphthalene-d8
 Concen: 20.00 ng
 RT: 10.42 min Scan# 1316
 Delta R.T. 0.00 min
 Lab File: BG016630.D
 Acq: 22 Apr 2015 21:24

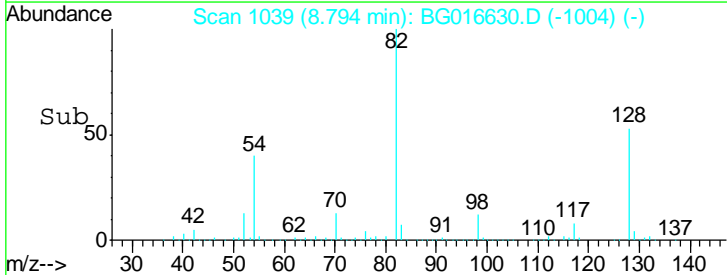
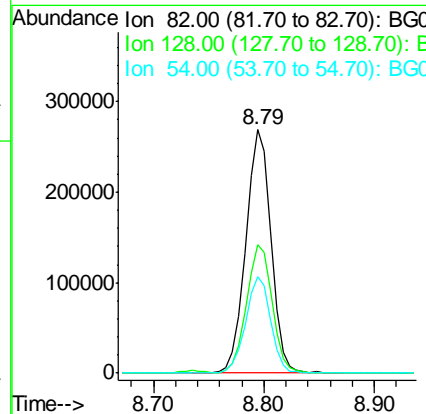
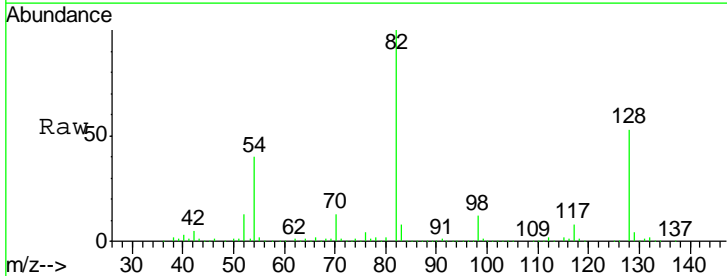
Instrument :
 BNA_G
 ClientSampled :
 MW-03

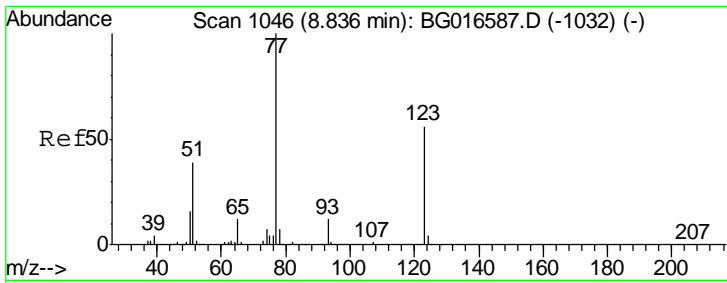
Tgt Ion	Resp	Lower	Upper
136	100		
137	11.2	8.8	13.2
54	6.7	4.9	7.3
68	6.9	4.9	7.3



#23
 Nitrobenzene-d5
 Concen: 90.48 ng
 RT: 8.79 min Scan# 1039
 Delta R.T. 0.00 min
 Lab File: BG016630.D
 Acq: 22 Apr 2015 21:24

Tgt Ion	Resp	Lower	Upper
82	100		
128	52.5	42.7	64.1
54	39.7	30.6	45.8

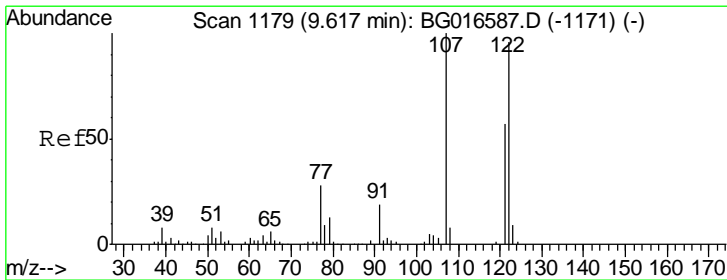
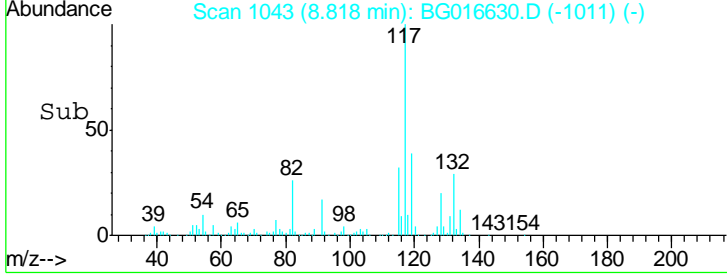
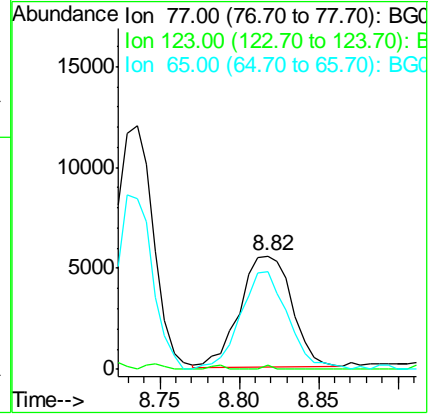
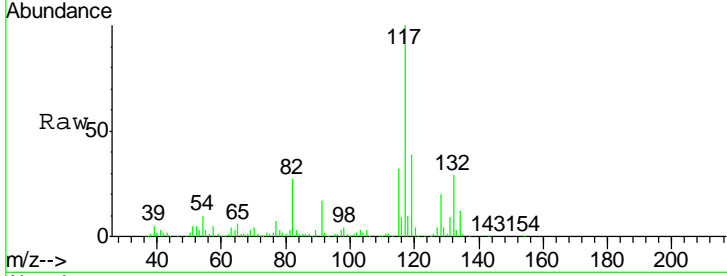




#24
 Nitrobenzene
 Concen: 2.53 ng
 RT: 8.82 min Scan# 1043
 Delta R.T. -0.01 min
 Lab File: BG016630.D
 Acq: 22 Apr 2015 21:24

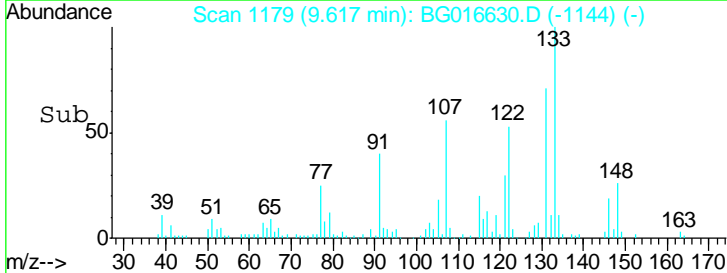
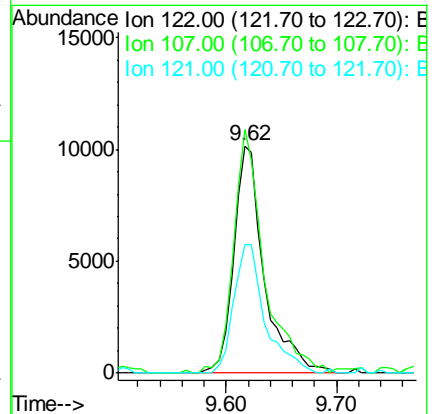
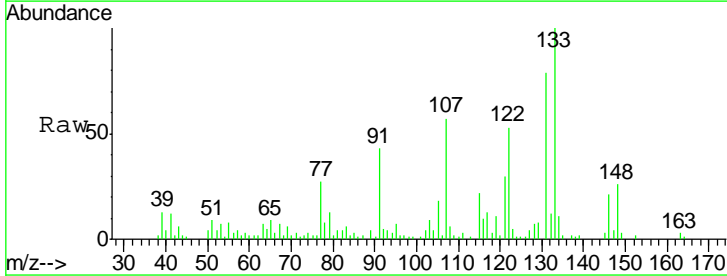
Instrument :
 BNA_G
ClientSampled :
 MW-03

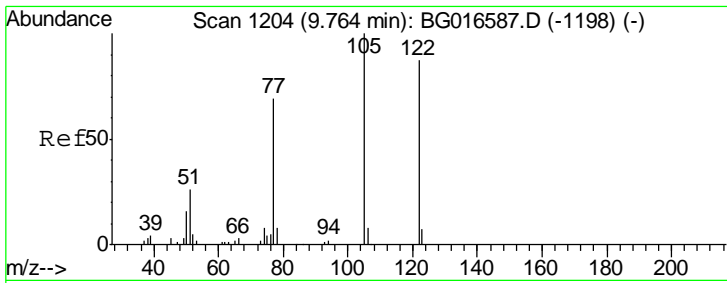
Tgt Ion	Resp	Lower	Upper
77	12515		
123	3.3	44.8	67.2#
65	86.8	9.8	14.6#



#27
 2,4-Dimethylphenol
 Concen: 4.24 ng
 RT: 9.62 min Scan# 1179
 Delta R.T. 0.00 min
 Lab File: BG016630.D
 Acq: 22 Apr 2015 21:24

Tgt Ion	Resp	Lower	Upper
122	19674		
122	100		
107	107.1	82.9	124.3
121	56.6	47.0	70.4

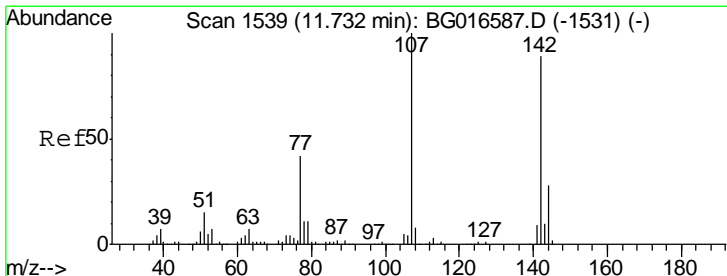
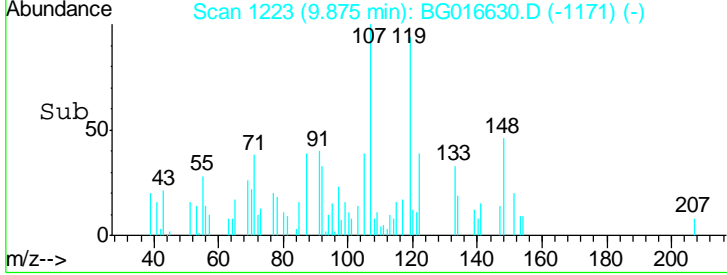
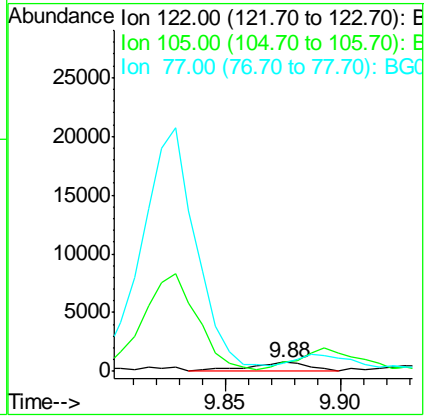
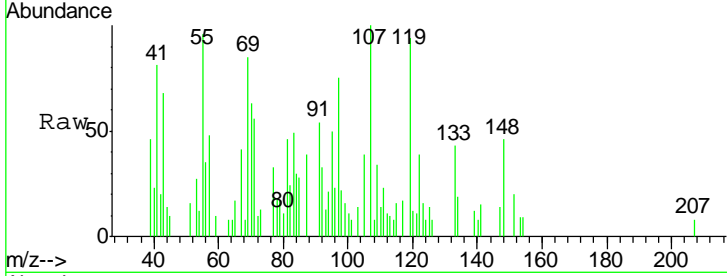




#32
 Benzoic acid
 Concen: 8.01 ng
 RT: 9.88 min Scan# 1223
 Delta R.T. 0.10 min
 Lab File: BG016630.D
 Acq: 22 Apr 2015 21:24

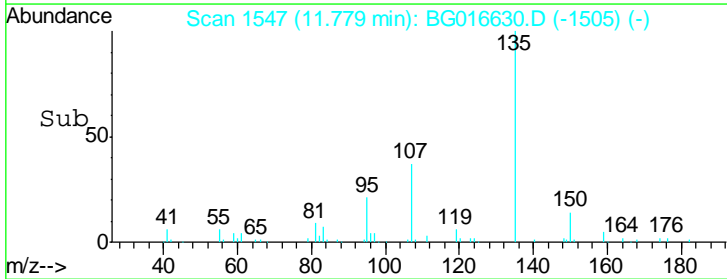
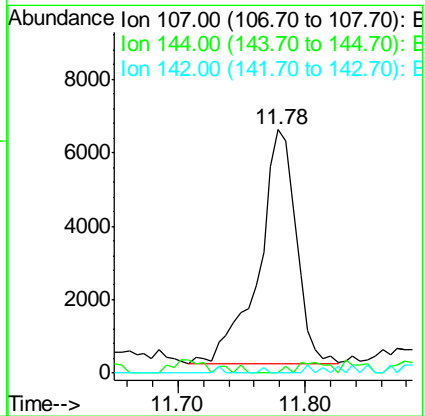
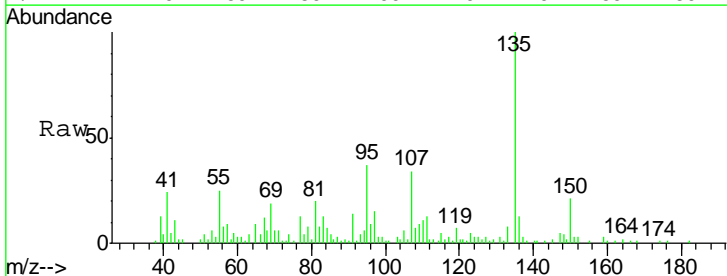
Instrument :
 BNA_G
 ClientSampled :
 MW-03

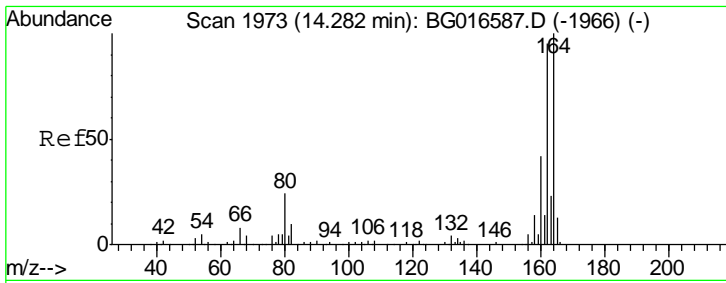
Tgt Ion	Resp	Lower	Upper
122	1463		
105	99.3	95.5	135.5
77	85.4	60.2	100.2



#36
 4-Chloro-3-methylphenol
 Concen: 2.81 ng
 RT: 11.78 min Scan# 1547
 Delta R.T. 0.04 min
 Lab File: BG016630.D
 Acq: 22 Apr 2015 21:24

Tgt Ion	Resp	Lower	Upper
107	13012		
144	0.0	22.3	33.5#
142	0.0	71.3	106.9#

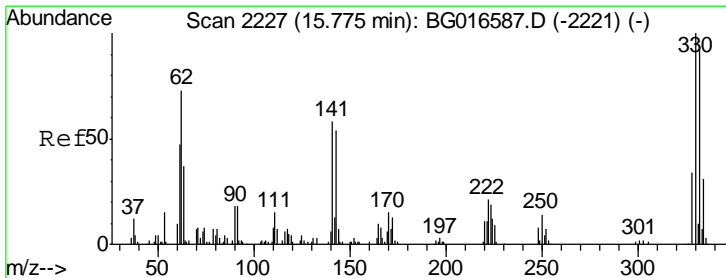
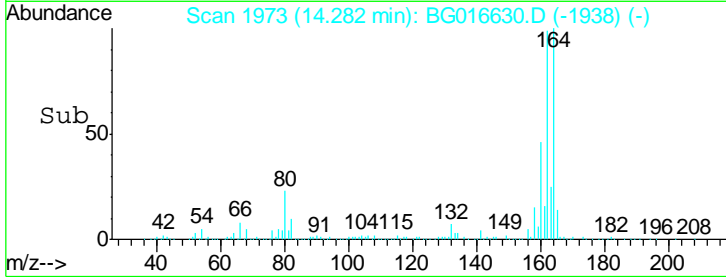
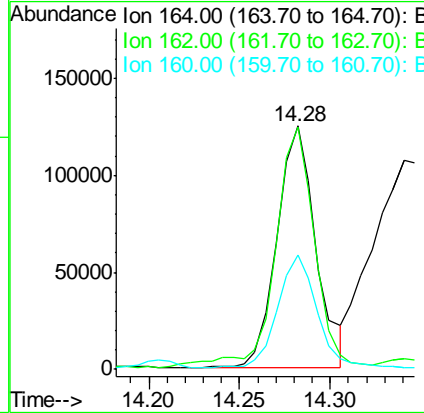
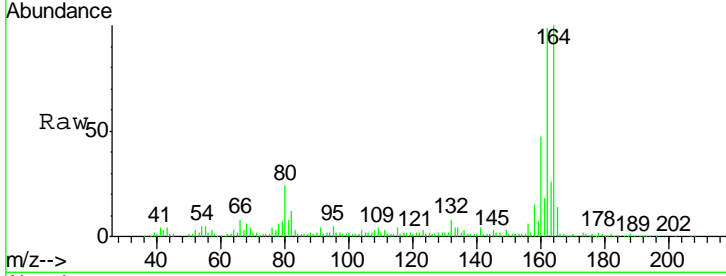




#38
 Acenaphthene-d10
 Concen: 20.00 ng
 RT: 14.28 min Scan# 1973
 Delta R.T. 0.00 min
 Lab File: BG016630.D
 Acq: 22 Apr 2015 21:24

Instrument :
 BNA_G
 ClientSampled :
 MW-03

Tgt Ion	Resp	Lower	Upper
164	185310		
162	99.5	75.8	113.6
160	46.7	33.8	50.6



#41
 2,4,6-Tribromophenol
 Concen: 133.42 ng
 RT: 15.78 min Scan# 2228
 Delta R.T. 0.00 min
 Lab File: BG016630.D
 Acq: 22 Apr 2015 21:24

Tgt Ion	Resp	Lower	Upper
330	167922		
332	94.6	76.6	114.8
141	61.4	45.9	68.9

