

Data Path : Z:\HPCHEM1\BNA G\DATA\BG042415\  
 Data File : BG016699.D  
 Acq On : 25 Apr 2015 1:48  
 Operator : TP/IZ  
 Sample : G1992-12  
 Misc :  
 ALS Vial : 16 Sample Multiplier: 1

Instrument :  
 BNA\_G  
 ClientSampleId :  
 TEC06

Quant Time: Apr 25 03:41:21 2015  
 Quant Method : Z:\HPCHEM1\BNA G\METHODS\8270-BG042315.M  
 Quant Title : ASP BNA STANDARDS FOR 5 POINT CALIBRATION  
 QLast Update : Fri Apr 24 22:57:52 2015  
 Response via : Initial Calibration

Internal Standards	R.T.	QIon	Response	Conc	Units	Dev(Min)
1) 1,4-Dichlorobenzene-d4	7.60	152	47554	20.00	ng	0.00
21) Naphthalene-d8	10.38	136	194254	20.00	ng	0.00
38) Acenaphthene-d10	14.25	164	110731	20.00	ng	0.00
63) Phenanthrene-d10	16.99	188	243149	20.00	ng	0.00
75) Chrysene-d12	21.18	240	242193	20.00	ng	0.00
86) Perylene-d12	23.38	264	228540	20.00	ng	0.00
System Monitoring Compounds						
5) 2-Fluorophenol	5.19	112	382113	130.39	ng	0.00
7) Phenol-d6	6.80	99	466986	113.59	ng	0.00
23) Nitrobenzene-d5	8.75	82	279438	90.90	ng	0.00
41) 2,4,6-Tribromophenol	15.75	330	127175	154.82	ng	0.00
44) 2-Fluorobiphenyl	12.87	172	650043	94.32	ng	0.00
78) Terphenyl-d14	19.63	244	880921	83.79	ng	0.00

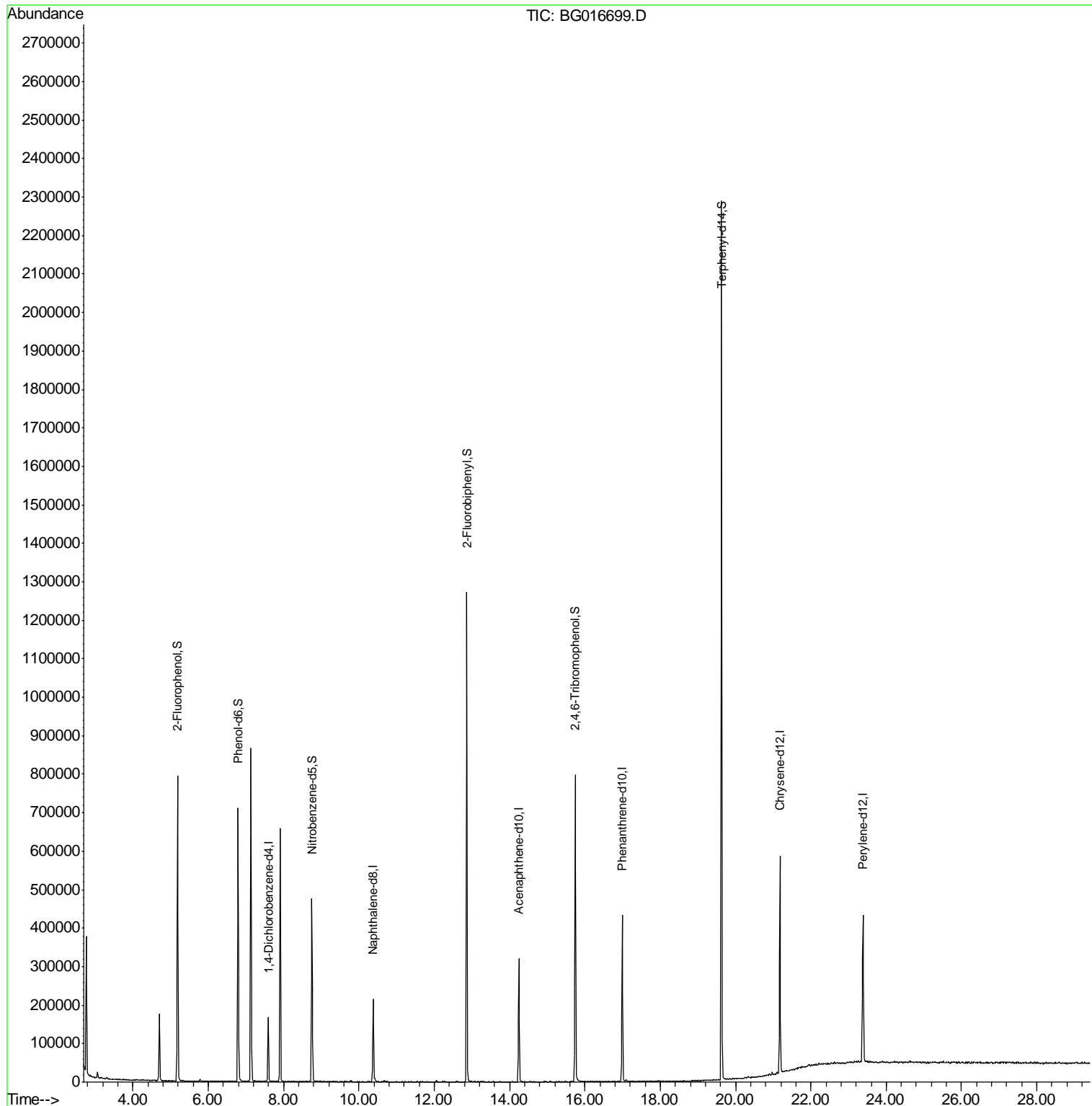
Target Compounds Qvalue

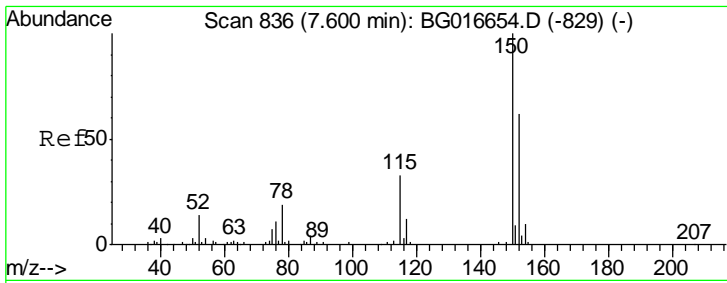
(#) = qualifier out of range (m) = manual integration (+) = signals summed

Data Path : Z:\HPCHEM1\BNA G\DATA\BG042415\  
 Data File : BG016699.D  
 Acq On : 25 Apr 2015 1:48  
 Operator : TP/IZ  
 Sample : G1992-12  
 Misc :  
 ALS Vial : 16 Sample Multiplier: 1

Instrument :  
 BNA\_G  
 ClientSampled :  
 TEC06

Quant Time: Apr 25 03:41:21 2015  
 Quant Method : Z:\HPCHEM1\BNA G\METHODS\8270-BG042315.M  
 Quant Title : ASP BNA STANDARDS FOR 5 POINT CALIBRATION  
 QLast Update : Fri Apr 24 22:57:52 2015  
 Response via : Initial Calibration

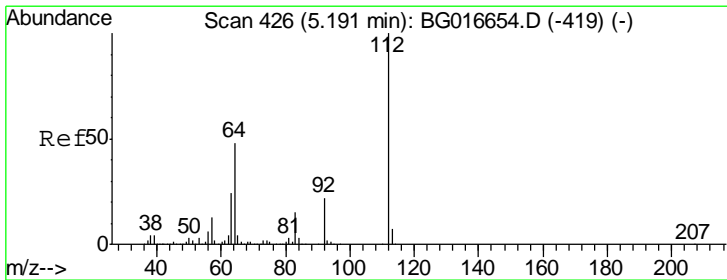
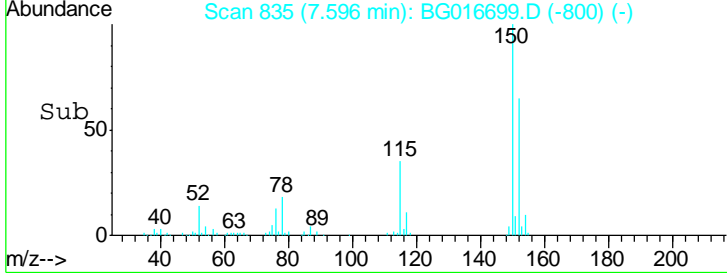
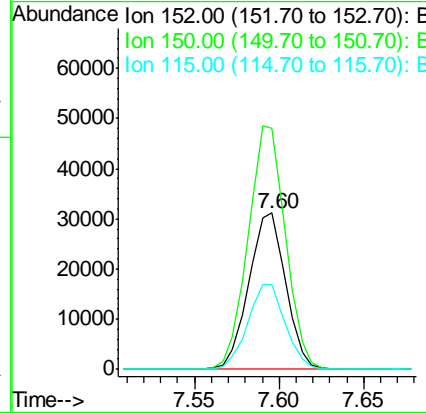
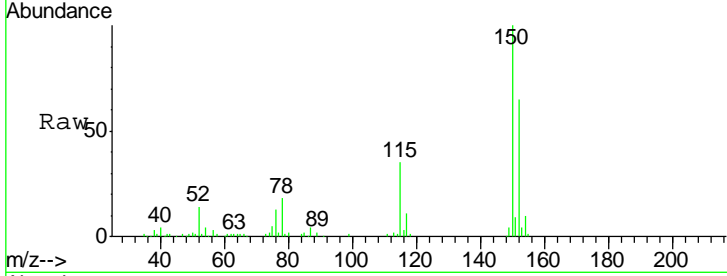




#1  
 1,4-Dichlorobenzene-d4  
 Concen: 20.00 ng  
 RT: 7.60 min Scan# 835  
 Delta R.T. 0.00 min  
 Lab File: BG016699.D  
 Acq: 25 Apr 2015 1:48

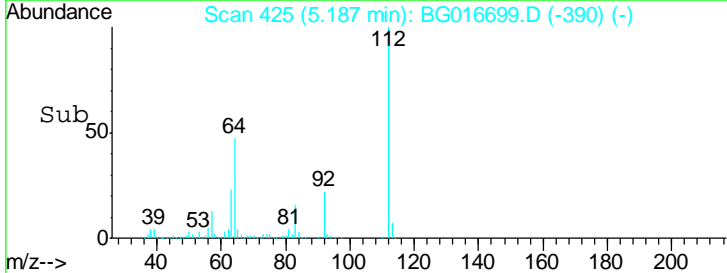
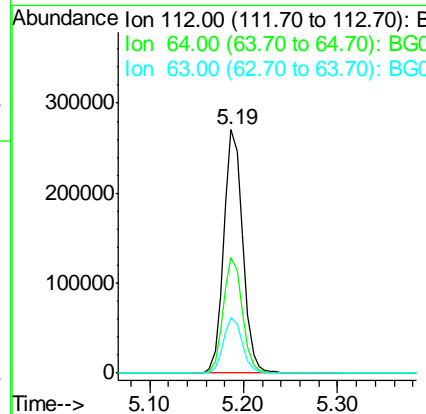
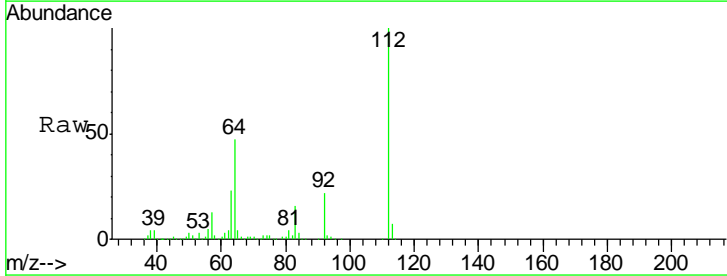
Instrument :  
 BNA\_G  
 ClientSampled :  
 TEC06

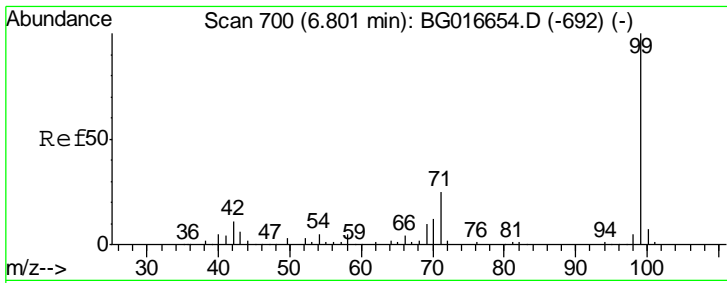
Tgt Ion	Resp	Lower	Upper
152	100		
150	154.8	129.6	194.4
115	54.6	43.0	64.6



#5  
 2-Fluorophenol  
 Concen: 130.39 ng  
 RT: 5.19 min Scan# 425  
 Delta R.T. 0.00 min  
 Lab File: BG016699.D  
 Acq: 25 Apr 2015 1:48

Tgt Ion	Resp	Lower	Upper
112	100		
64	47.3	38.3	57.5
63	23.0	18.9	28.3

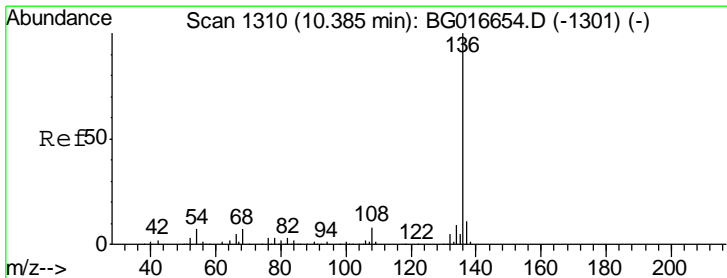
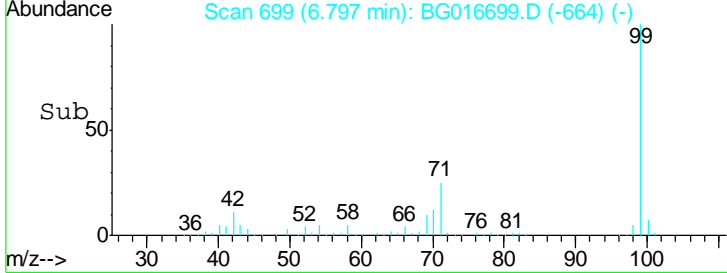
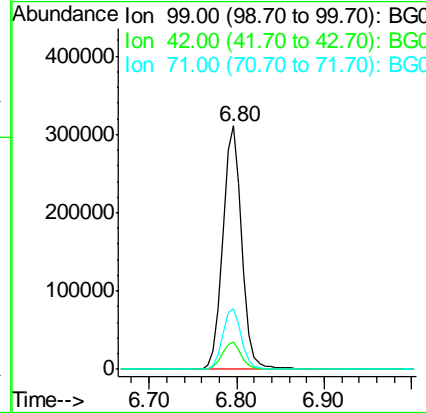
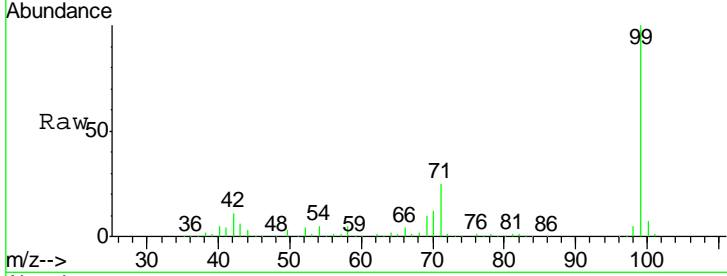




#7  
 Phenol-d6  
 Concen: 113.59 ng  
 RT: 6.80 min Scan# 699  
 Delta R.T. 0.01 min  
 Lab File: BG016699.D  
 Acq: 25 Apr 2015 1:48

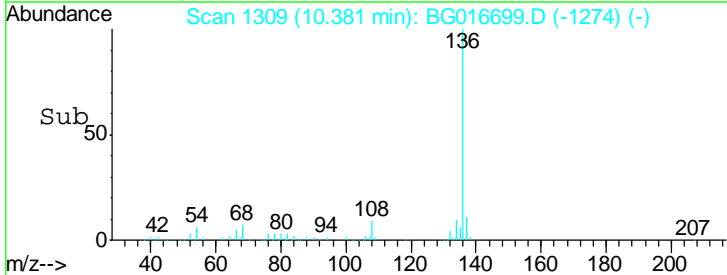
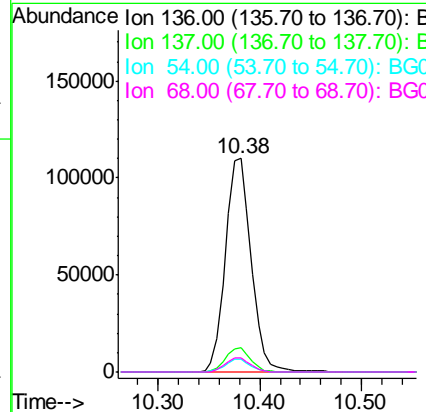
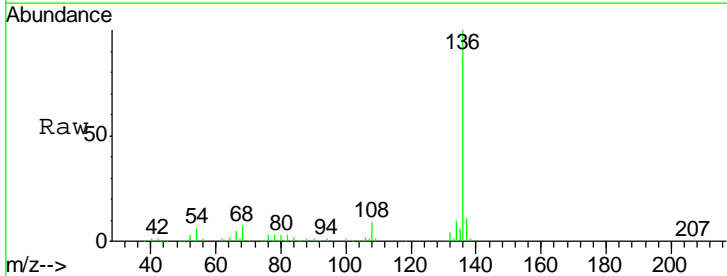
Instrument :  
 BNA\_G  
 ClientSampled :  
 TEC06

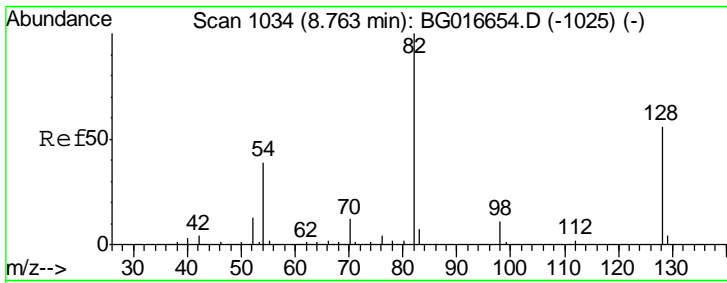
Tgt Ion	Resp	Lower	Upper
99	466986		
Ion Ratio			
99	100		
42	11.3	8.8	13.2
71	25.1	19.9	29.9



#21  
 Naphthalene-d8  
 Concen: 20.00 ng  
 RT: 10.38 min Scan# 1309  
 Delta R.T. 0.00 min  
 Lab File: BG016699.D  
 Acq: 25 Apr 2015 1:48

Tgt Ion	Resp	Lower	Upper
136	194254		
Ion Ratio			
136	100		
137	11.5	8.5	12.7
54	6.3	5.4	8.2
68	6.9	5.2	7.8

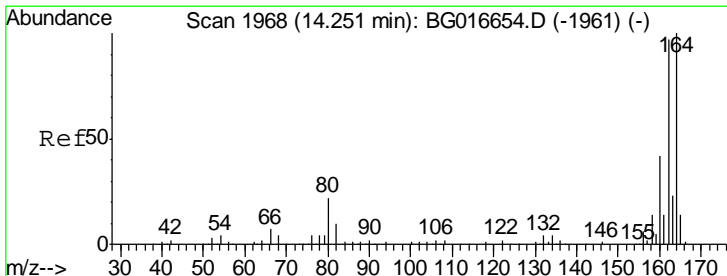
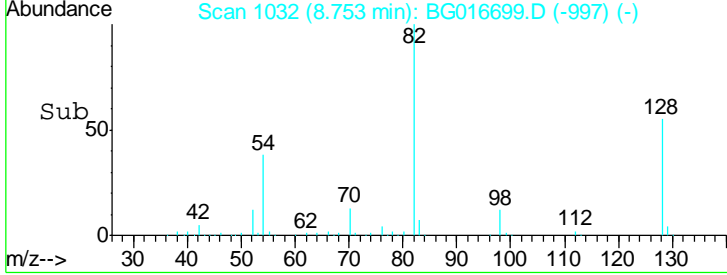
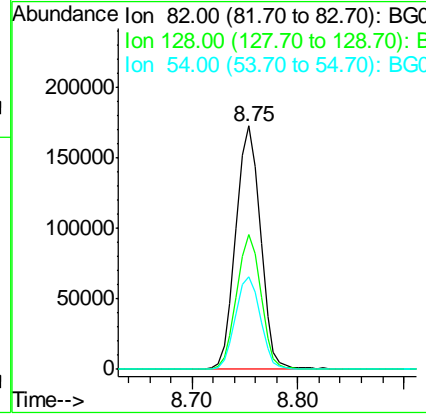
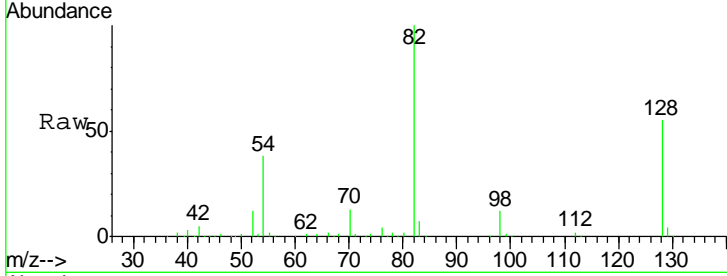




#23  
 Nitrobenzene-d5  
 Concen: 90.90 ng  
 RT: 8.75 min Scan# 1032  
 Delta R.T. 0.00 min  
 Lab File: BG016699.D  
 Acq: 25 Apr 2015 1:48

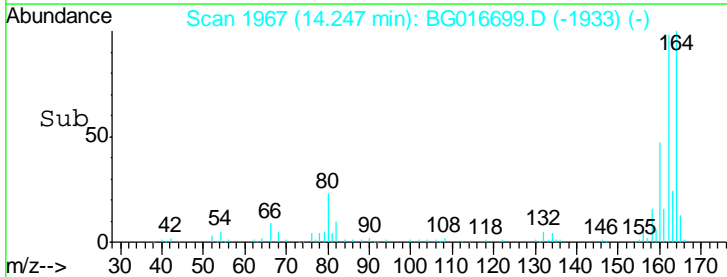
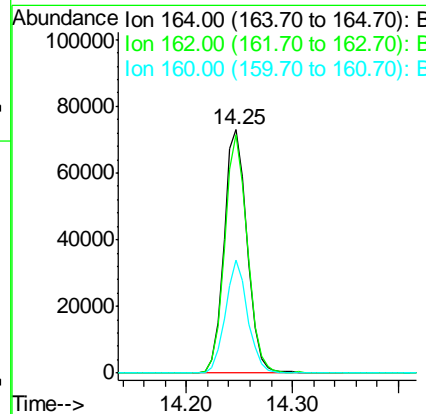
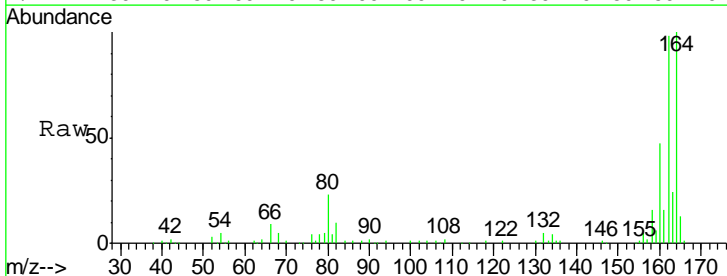
**Instrument :**  
 BNA\_G  
**ClientSampled :**  
 TEC06

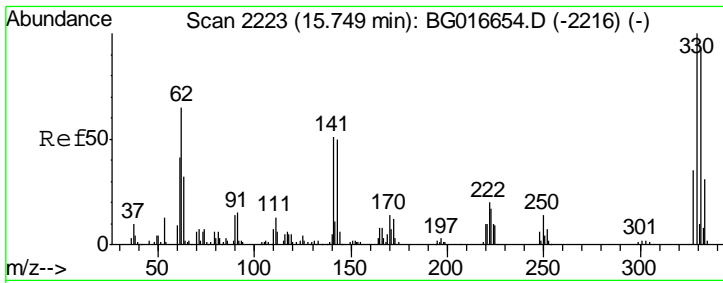
Tgt Ion	Resp	Lower	Upper
82	100		
128	55.3	44.7	67.1
54	37.8	30.9	46.3



#38  
 Acenaphthene-d10  
 Concen: 20.00 ng  
 RT: 14.25 min Scan# 1967  
 Delta R.T. -0.00 min  
 Lab File: BG016699.D  
 Acq: 25 Apr 2015 1:48

Tgt Ion	Resp	Lower	Upper
164	100		
162	97.9	77.3	115.9
160	46.6	33.7	50.5

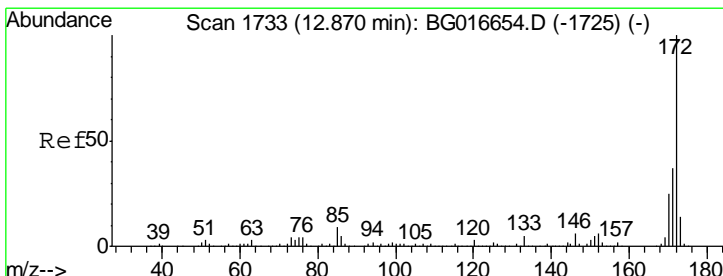
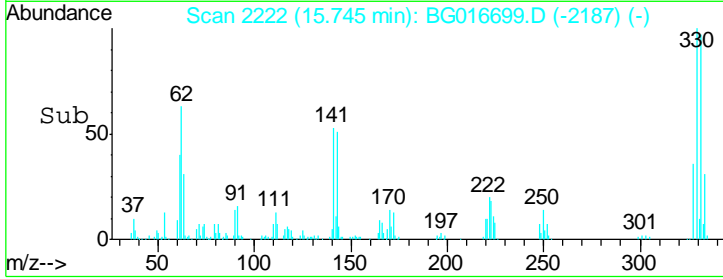
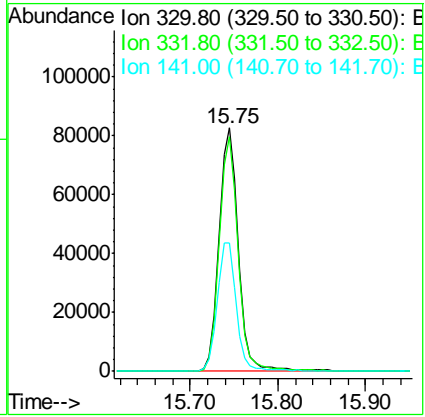
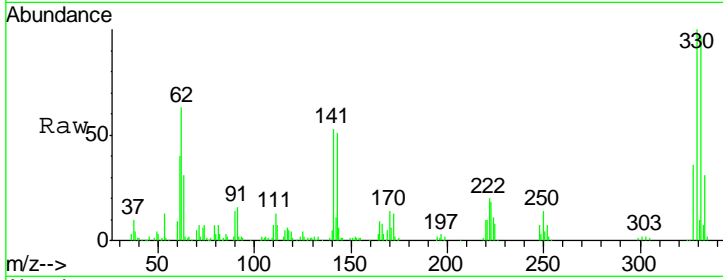




#41  
 2,4,6-Tribromophenol  
 Concen: 154.82 ng  
 RT: 15.75 min Scan# 2222  
 Delta R.T. 0.00 min  
 Lab File: BG016699.D  
 Acq: 25 Apr 2015 1:48

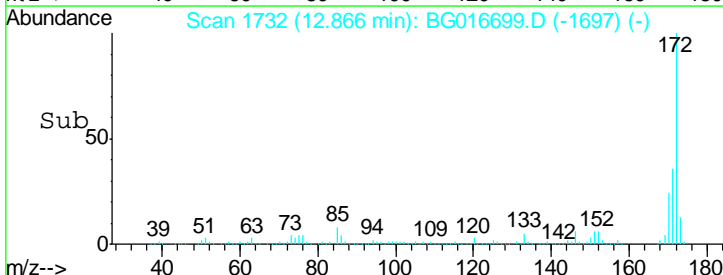
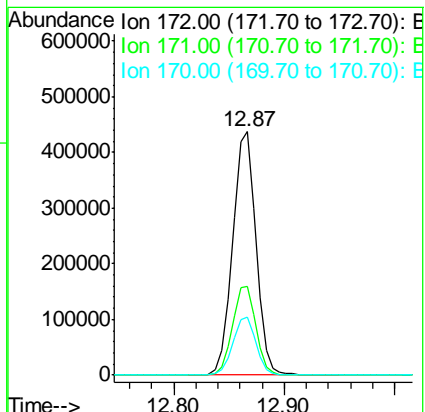
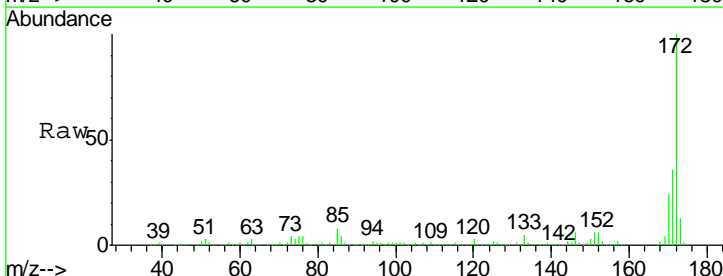
Instrument :  
 BNA\_G  
 ClientSampled :  
 TEC06

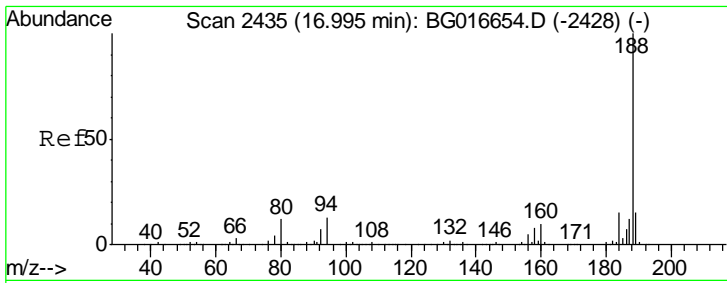
Tgt Ion	Resp	Lower	Upper
330	127175		
332	94.9	76.2	114.4
141	52.6	43.0	64.6



#44  
 2-Fluorobiphenyl  
 Concen: 94.32 ng  
 RT: 12.87 min Scan# 1732  
 Delta R.T. 0.00 min  
 Lab File: BG016699.D  
 Acq: 25 Apr 2015 1:48

Tgt Ion	Resp	Lower	Upper
172	650043		
171	36.2	29.9	44.9
170	23.8	19.8	29.8

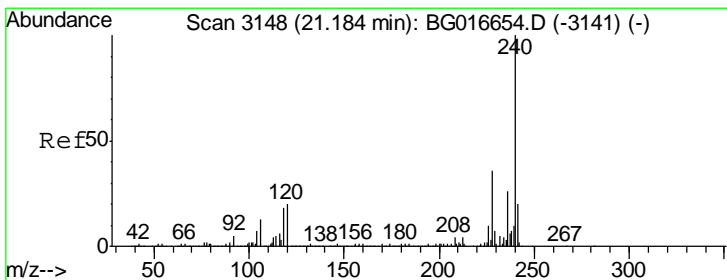
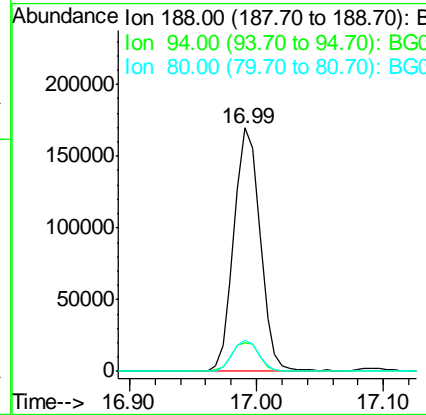
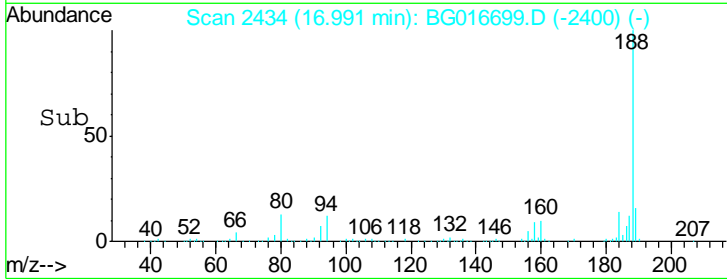
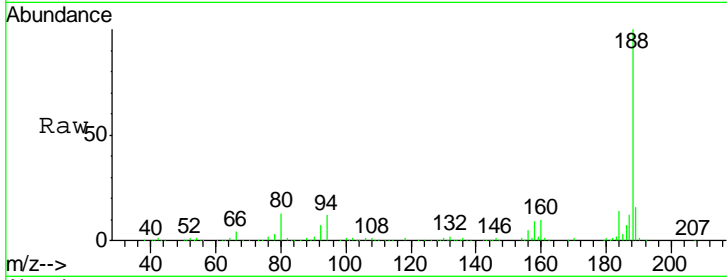




#63  
 Phenanthrene-d10  
 Concen: 20.00 ng  
 RT: 16.99 min Scan# 2434  
 Delta R.T. -0.00 min  
 Lab File: BG016699.D  
 Acq: 25 Apr 2015 1:48

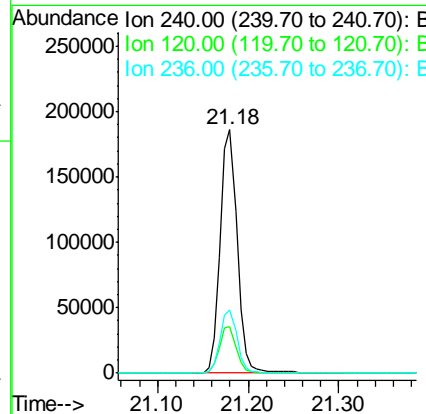
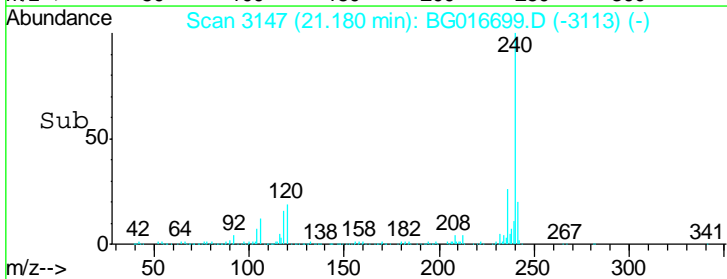
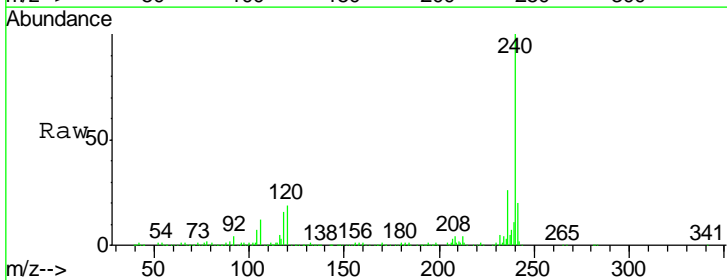
Instrument :  
 BNA\_G  
 ClientSampled :  
 TEC06

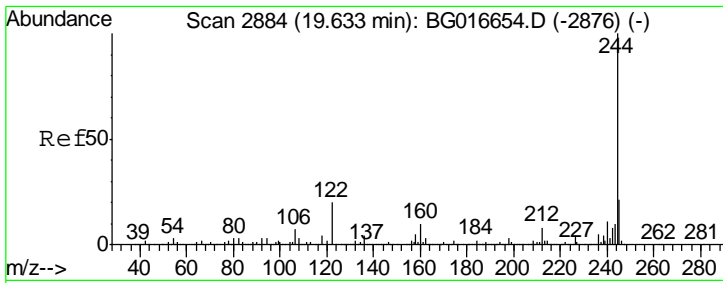
Tgt Ion	Resp	Lower	Upper
188	100		
94	11.8	10.7	16.1
80	12.6	9.9	14.9



#75  
 Chrysene-d12  
 Concen: 20.00 ng  
 RT: 21.18 min Scan# 3147  
 Delta R.T. -0.00 min  
 Lab File: BG016699.D  
 Acq: 25 Apr 2015 1:48

Tgt Ion	Resp	Lower	Upper
240	100		
120	19.3	16.3	24.5
236	26.0	21.1	31.7

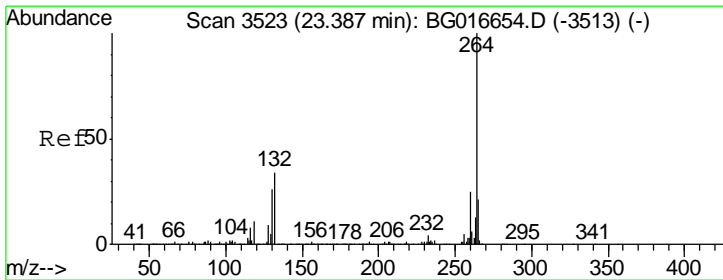
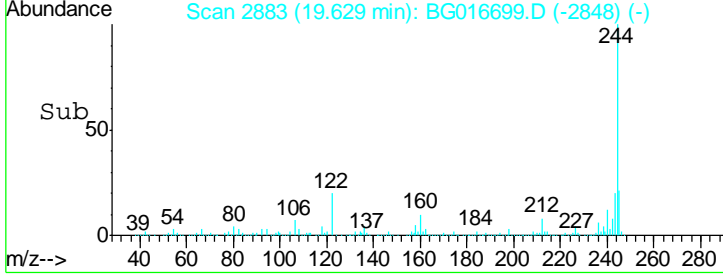
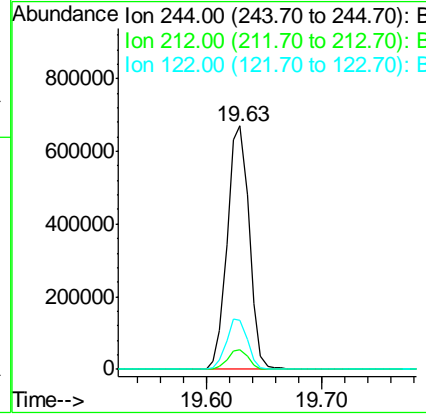
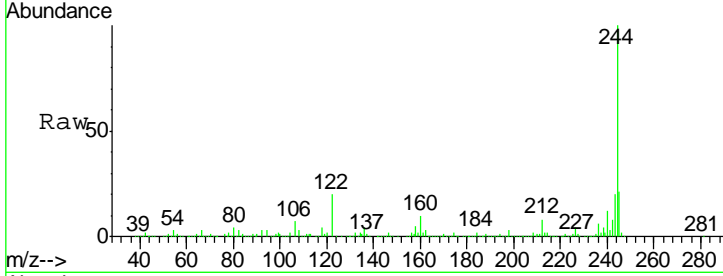




#78  
 Terphenyl-d14  
 Concen: 83.79 ng  
 RT: 19.63 min Scan# 2883  
 Delta R.T. 0.00 min  
 Lab File: BG016699.D  
 Acq: 25 Apr 2015 1:48

Instrument :  
 BNA\_G  
 ClientSampled :  
 TEC06

Tgt Ion	Resp	Lower	Upper
244	100		
212	8.3	6.4	9.6
122	20.2	15.9	23.9



#86  
 Perylene-d12  
 Concen: 20.00 ng  
 RT: 23.38 min Scan# 3522  
 Delta R.T. -0.00 min  
 Lab File: BG016699.D  
 Acq: 25 Apr 2015 1:48

Tgt Ion	Resp	Lower	Upper
264	100		
260	23.8	20.0	30.0
265	20.7	16.8	25.2

