

Data Path : Z:\HPCHEM1\BNA G\DATA\BG042418\
 Data File : BG033978.D
 Acq On : 25 Apr 2018 7:29
 Operator : SJ/JU
 Sample : J2506-01
 Misc :
 ALS Vial : 27 Sample Multiplier: 1

Instrument :
 BNA_G
ClientSampleId :
 CB-TCLP-64-0418

Manual Integrations
APPROVED
 Sohil
 4/25/2018 4:25:55 PM

Quant Time: Apr 25 12:11:59 2018
 Quant Method : Z:\HPCHEM1\BNA G\METHODS\8270-BG041918.M
 Quant Title : ASP BNA STANDARDS FOR 5 POINT CALIBRATION
 QLast Update : Thu Apr 19 13:56:22 2018
 Response via : Initial Calibration

Internal Standards	R.T.	QIon	Response	Conc	Units	Dev(Min)
1) 1,4-Dichlorobenzene-d4	7.83	152	75503	20.00	ng	0.00
21) Naphthalene-d8	10.61	136	309901	20.00	ng	-0.02
38) Acenaphthene-d10	14.46	164	192590	20.00	ng	-0.02
63) Phenanthrene-d10	17.21	188	491641	20.00	ng	-0.02
75) Chrysene-d12	21.47	240	568259	20.00	ng	-0.02
86) Perylene-d12	24.52	264	578331	20.00	ng	-0.04
System Monitoring Compounds						
5) 2-Fluorophenol	5.44	112	603020	127.51	ng	0.00
7) Phenol-d6	7.00	99	704461	102.13	ng	0.00
23) Nitrobenzene-d5	8.98	82	543537	99.81	ng	-0.01
41) 2,4,6-Tribromophenol	15.95	330	344892	153.50	ng	-0.02
44) 2-Fluorobiphenyl	13.08	172	1258881	96.02	ng	-0.02
78) Terphenyl-d14	19.85	244	2155765	85.23	ng	-0.02

Target Compounds Qvalue

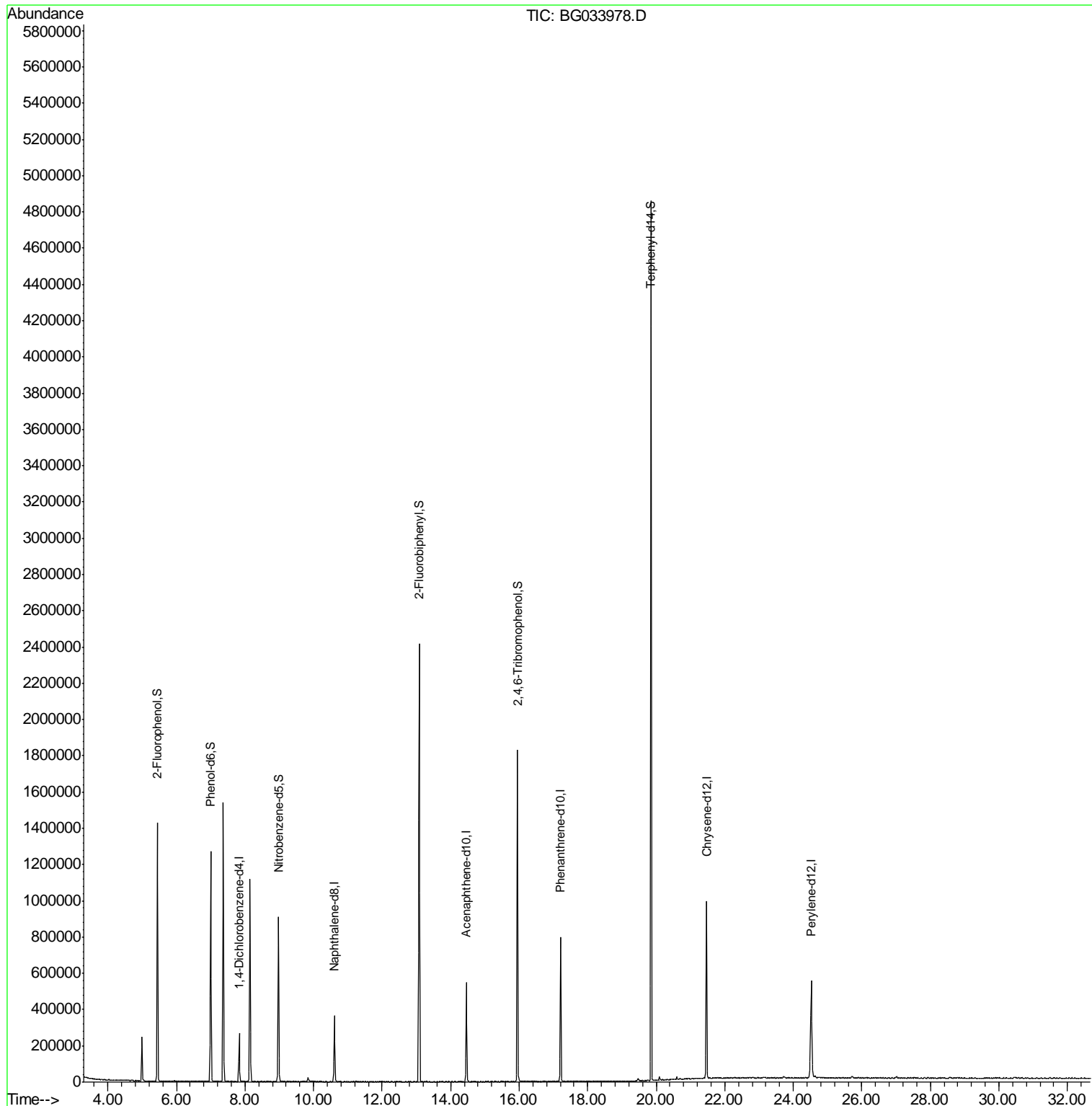
(#) = qualifier out of range (m) = manual integration (+) = signals summed

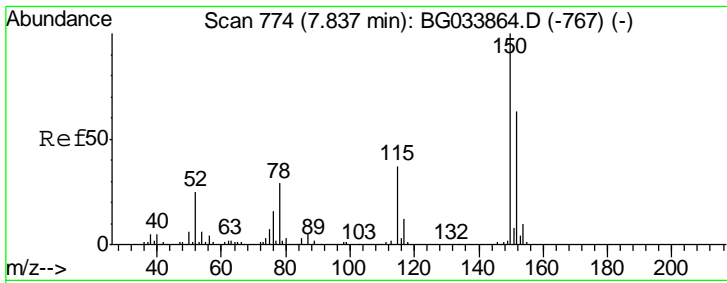
Data Path : Z:\HPCHEM1\BNA G\DATA\BG042418\
 Data File : BG033978.D
 Acq On : 25 Apr 2018 7:29
 Operator : SJ/JU
 Sample : J2506-01
 Misc :
 ALS Vial : 27 Sample Multiplier: 1

Instrument :
 BNA_G
ClientSampled :
 CB-TCLP-64-0418

Manual Integrations
APPROVED
 Sohil
 4/25/2018 4:25:55 PM

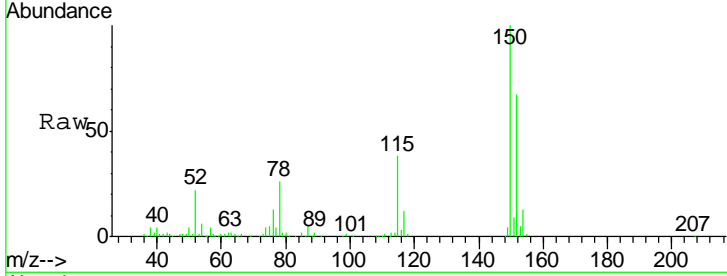
Quant Time: Apr 25 12:11:59 2018
 Quant Method : Z:\HPCHEM1\BNA G\METHODS\8270-BG041918.M
 Quant Title : ASP BNA STANDARDS FOR 5 POINT CALIBRATION
 QLast Update : Thu Apr 19 13:56:22 2018
 Response via : Initial Calibration





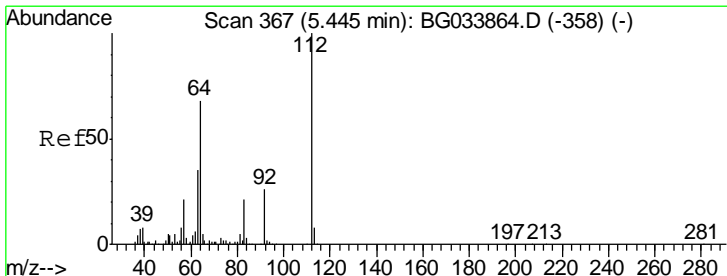
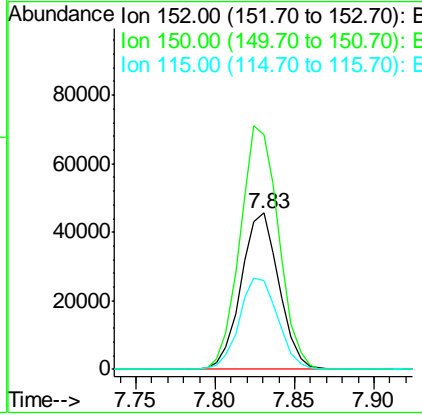
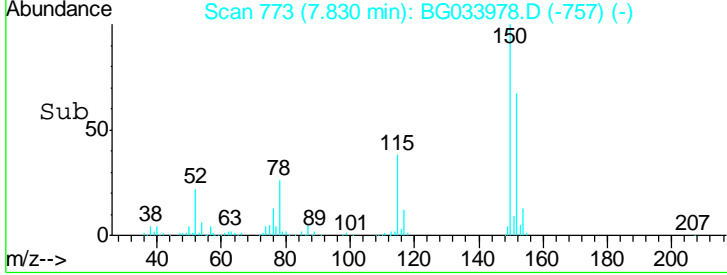
#1
 1,4-Dichlorobenzene-d4
 Concen: 20.000 ng
 RT: 7.83 min Scan# 773
 Delta R.T. -0.01 min
 Lab File: BG033978.D
 Acq: 25 Apr 2018 7:29

Instrument :
 BNA_G
ClientSampled :
 CB-TCLP-64-0418

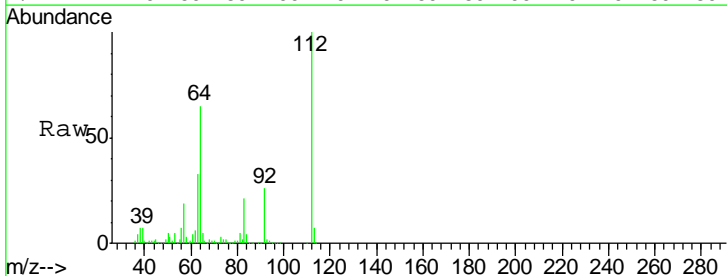


Tgt Ion	Resp	Lower	Upper
152	75503		
150	100	126.6	189.8
115	56.9	53.0	79.4

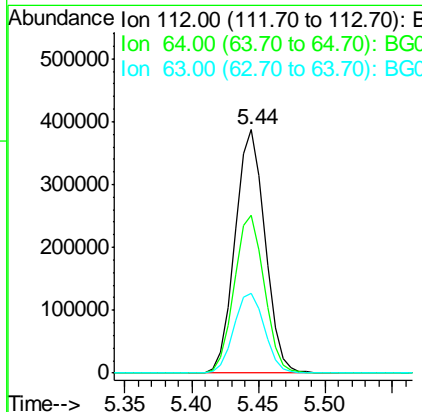
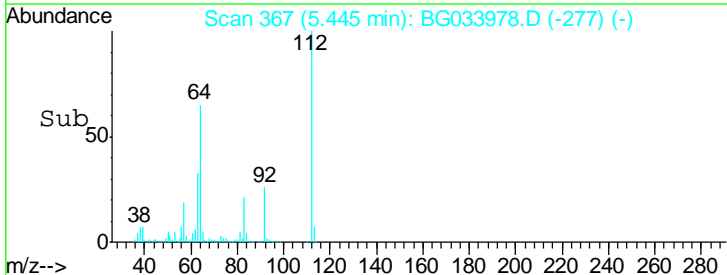
Manual Integrations
APPROVED
 Sohil
 4/25/2018 4:25:55 PM

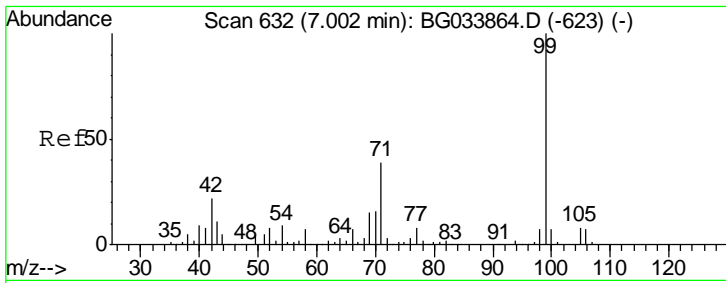


#5
 2-Fluorophenol
 Concen: 127.510 ng
 RT: 5.44 min Scan# 367
 Delta R.T. -0.00 min
 Lab File: BG033978.D
 Acq: 25 Apr 2018 7:29



Tgt Ion	Resp	Lower	Upper
112	603020		
64	100	56.3	84.5
63	32.9	30.1	45.1





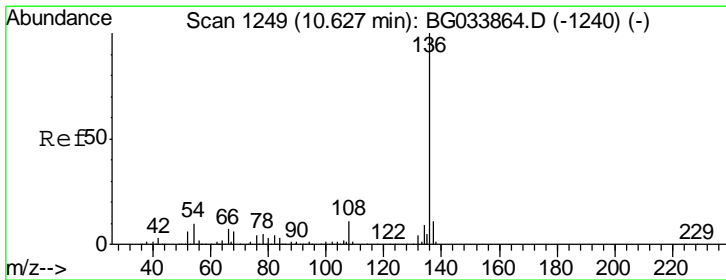
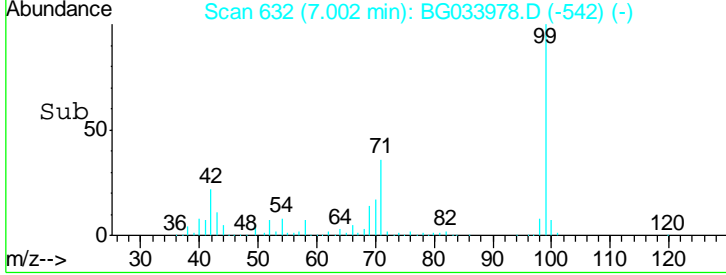
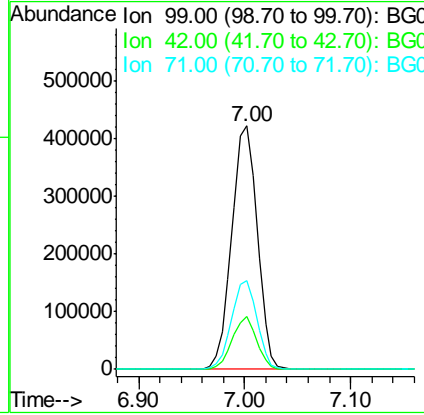
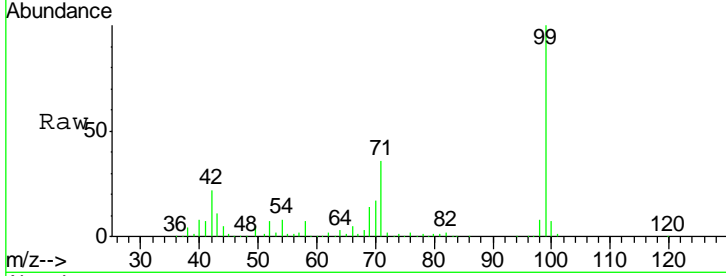
#7
 Phenol-d6
 Concen: 102.128 ng
 RT: 7.00 min Scan# 632
 Delta R.T. -0.00 min
 Lab File: BG033978.D
 Acq: 25 Apr 2018 7:29

Instrument :
 BNA_G
ClientSampled :
 CB-TCLP-64-0418

Tgt Ion	Resp	Lower	Upper
99	100		
42	21.7	14.1	21.1#
71	36.5	26.1	39.1

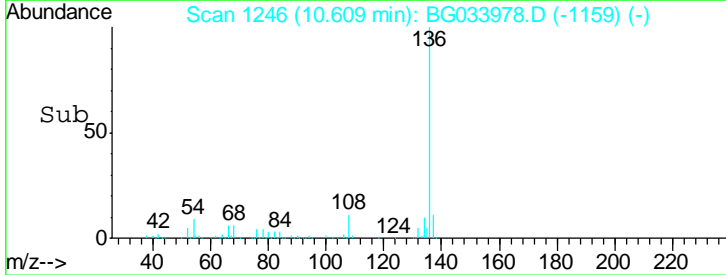
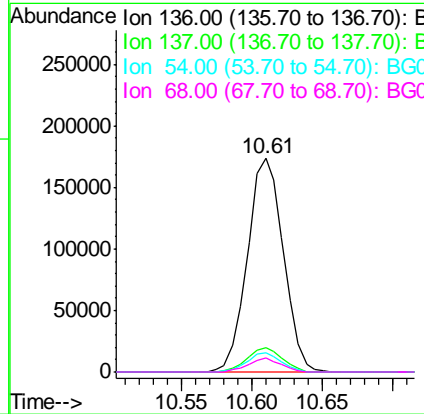
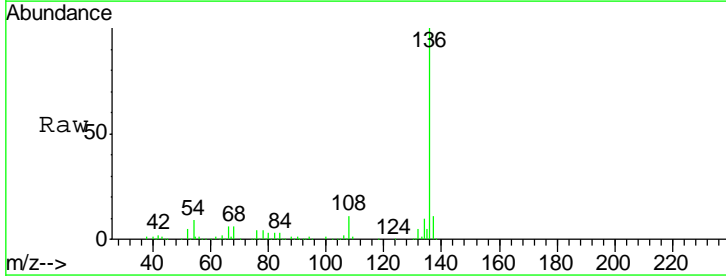
Manual Integrations
APPROVED

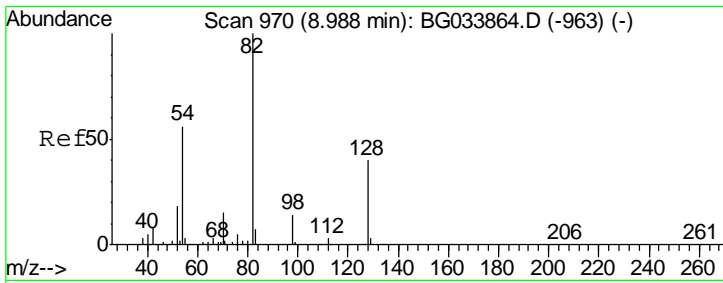
Sohil
 4/25/2018 4:25:55 PM



#21
 Naphthalene-d8
 Concen: 20.000 ng
 RT: 10.61 min Scan# 1246
 Delta R.T. -0.02 min
 Lab File: BG033978.D
 Acq: 25 Apr 2018 7:29

Tgt Ion	Resp	Lower	Upper
136	100		
137	11.5	9.2	13.8
54	9.2	10.3	15.5#
68	6.4	4.5	6.7





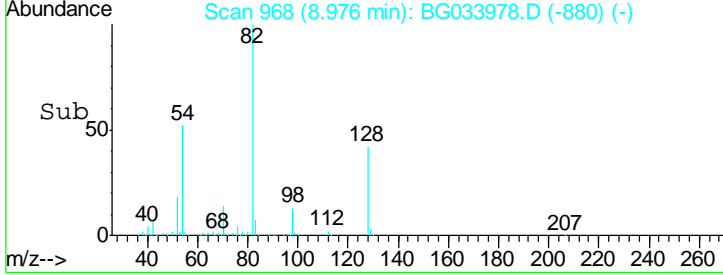
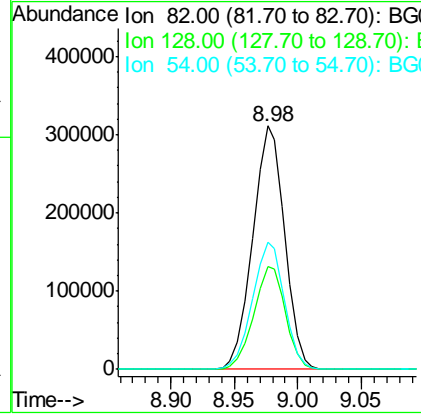
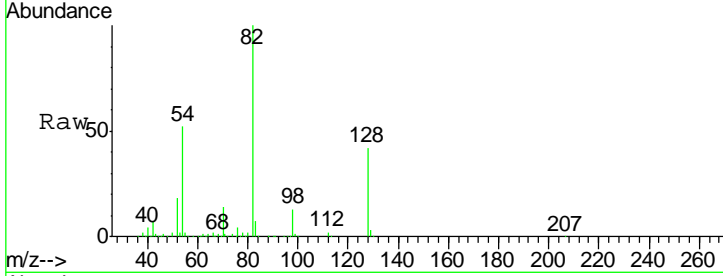
#23
 Nitrobenzene-d5
 Concen: 99.814 ng
 RT: 8.98 min Scan# 968
 Delta R.T. -0.01 min
 Lab File: BG033978.D
 Acq: 25 Apr 2018 7:29

Instrument :
 BNA_G
ClientSampled :
 CB-TCLP-64-0418

Tgt Ion	Resp	Lower	Upper
82	543537		
128	42.3	29.7	44.5
54	52.2	43.1	64.7

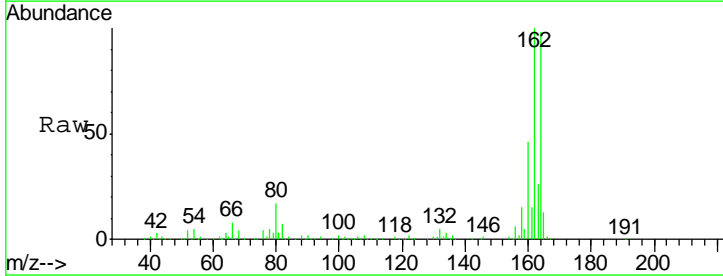
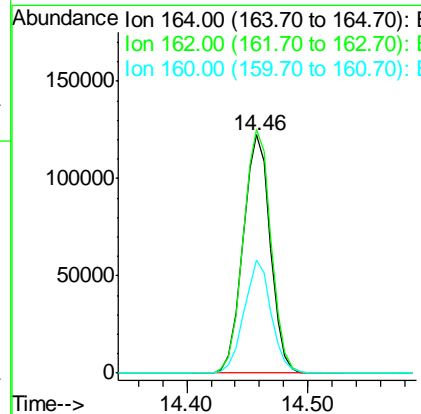
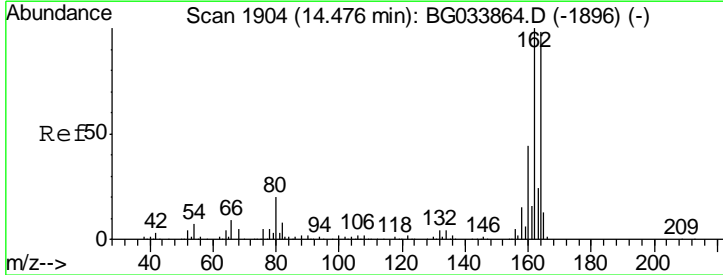
Manual Integrations
APPROVED

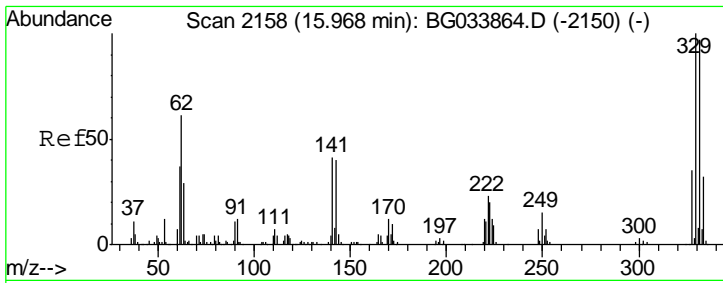
Sohil
 4/25/2018 4:25:55 PM



#38
 Acenaphthene-d10
 Concen: 20.000 ng
 RT: 14.46 min Scan# 1901
 Delta R.T. -0.02 min
 Lab File: BG033978.D
 Acq: 25 Apr 2018 7:29

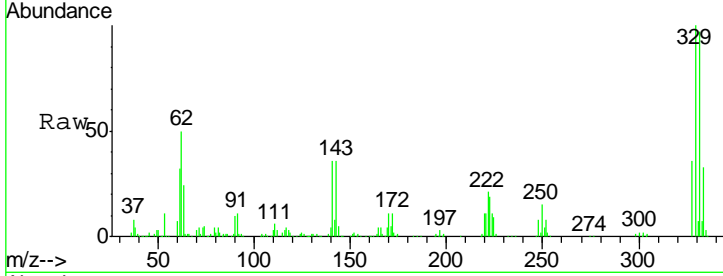
Tgt Ion	Resp	Lower	Upper
164	192590		
162	102.3	78.8	118.2
160	47.4	35.4	53.0





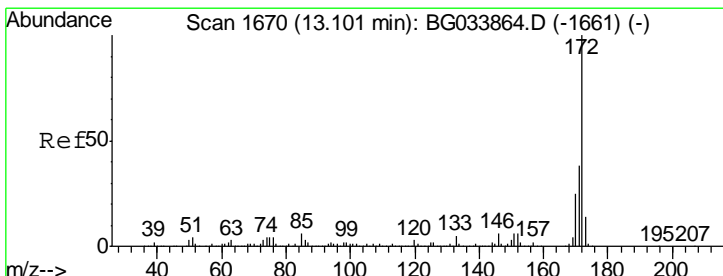
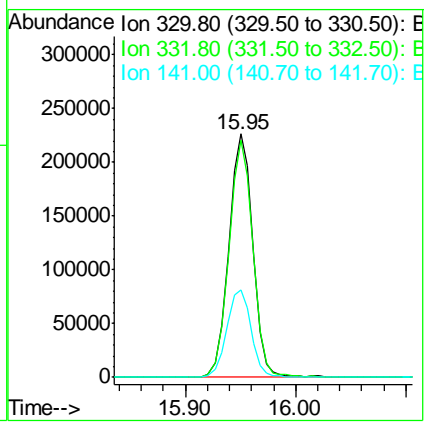
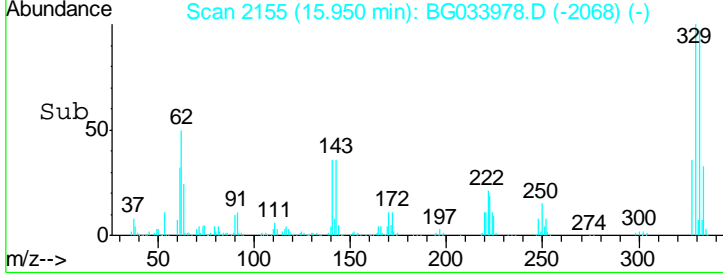
#41
 2,4,6-Tribromophenol
 Concen: 153.499 ng
 RT: 15.95 min Scan# 2155
 Delta R.T. -0.02 min
 Lab File: BG033978.D
 Acq: 25 Apr 2018 7:29

Instrument :
 BNA_G
ClientSampled :
 CB-TCLP-64-0418

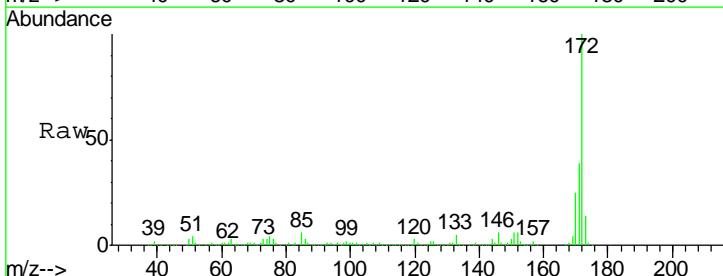


Tgt Ion	Resp	Lower	Upper
330	100		
332	96.9	77.0	115.6
141	36.9	25.2	37.8

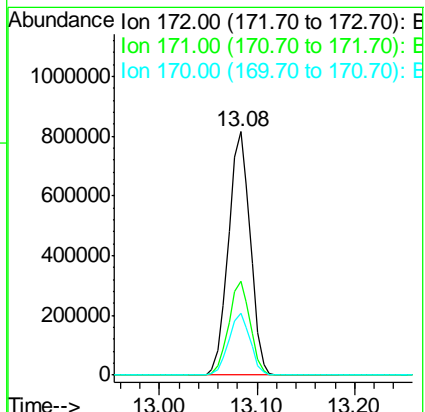
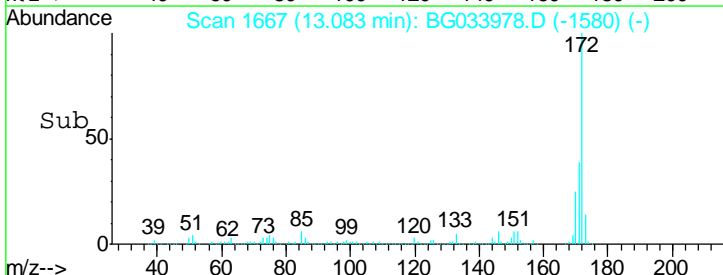
Manual Integrations
APPROVED
 Sohil
 4/25/2018 4:25:55 PM

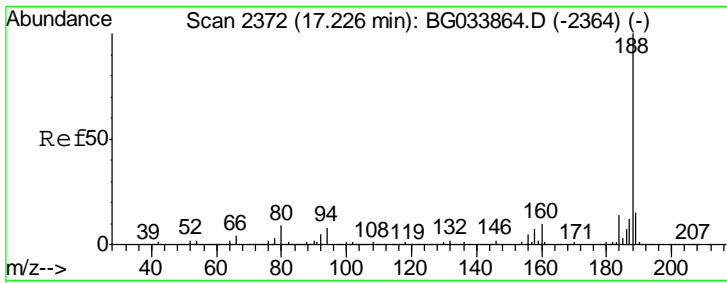


#44
 2-Fluorobiphenyl
 Concen: 96.024 ng
 RT: 13.08 min Scan# 1667
 Delta R.T. -0.02 min
 Lab File: BG033978.D
 Acq: 25 Apr 2018 7:29



Tgt Ion	Resp	Lower	Upper
172	100		
171	38.7	30.0	45.0
170	25.4	19.5	29.3



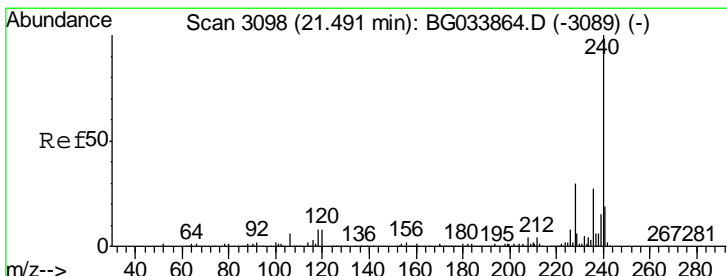
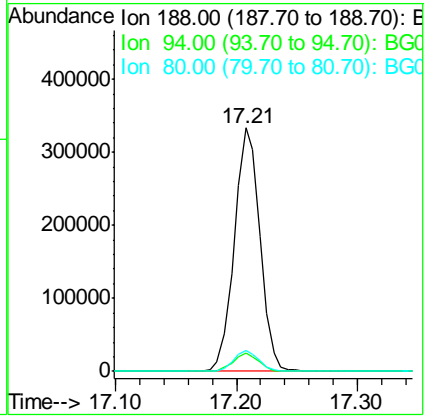
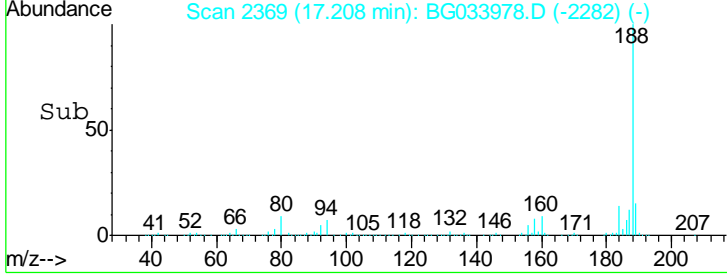
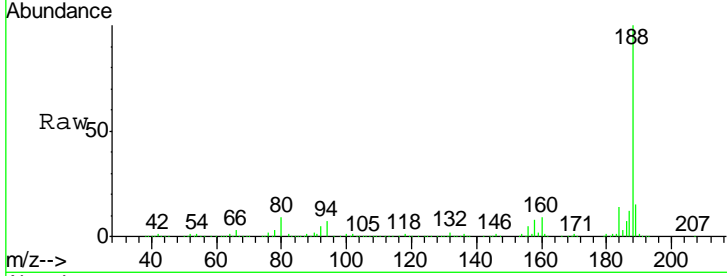


#63
 Phenanthrene-d10
 Concen: 20.000 ng
 RT: 17.21 min Scan# 2369
 Delta R.T. -0.02 min
 Lab File: BG033978.D
 Acq: 25 Apr 2018 7:29

Instrument :
 BNA_G
Client Sampled :
 CB-TCLP-64-0418

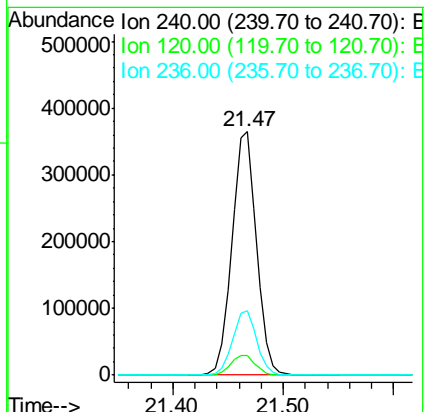
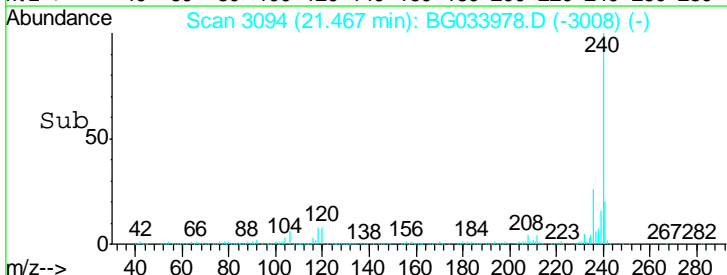
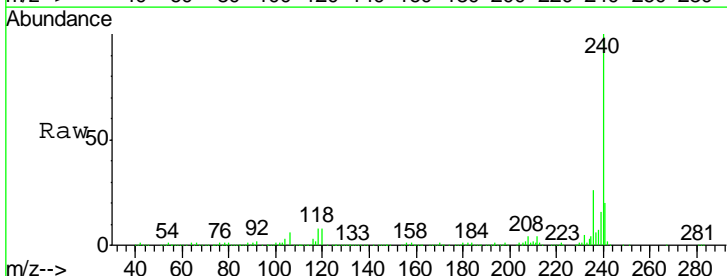
Tgt Ion	Resp	Lower	Upper
188	491641		
94	7.4	6.9	10.3
80	8.5	7.7	11.5

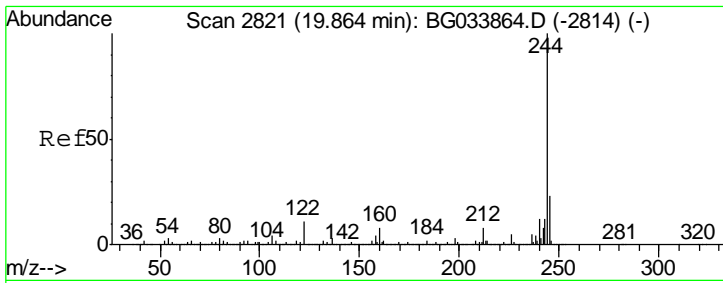
Manual Integrations
APPROVED
 Sohil
 4/25/2018 4:25:55 PM



#75
 Chrysene-d12
 Concen: 20.000 ng
 RT: 21.47 min Scan# 3094
 Delta R.T. -0.02 min
 Lab File: BG033978.D
 Acq: 25 Apr 2018 7:29

Tgt Ion	Resp	Lower	Upper
240	568259		
120	7.8	6.8	10.2
236	26.4	20.9	31.3





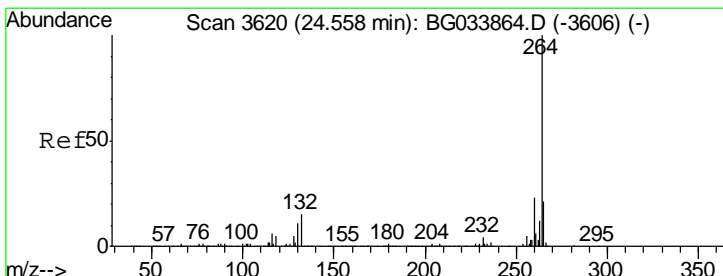
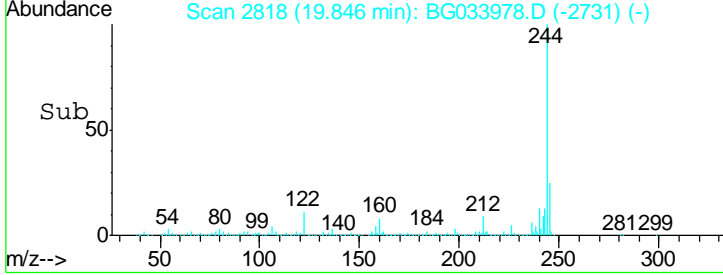
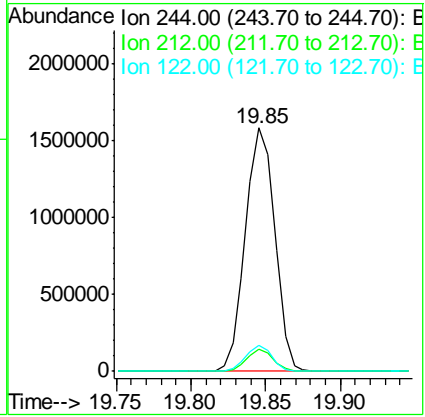
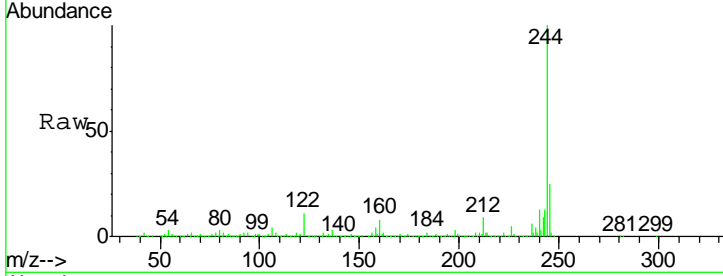
#78
 Terphenyl-d14
 Concen: 85.228 ng
 RT: 19.85 min Scan# 2818
 Delta R.T. -0.02 min
 Lab File: BG033978.D
 Acq: 25 Apr 2018 7:29

Instrument :
 BNA_G
ClientSampled :
 CB-TCLP-64-0418

Tgt Ion: 244 Resp: 2155765

Ion	Ratio	Lower	Upper
244	100		
212	9.1	5.8	8.8#
122	10.6	7.0	10.4#

Manual Integrations
APPROVED
 Sohil
 4/25/2018 4:25:55 PM



#86
 Perylene-d12
 Concen: 20.000 ng
 RT: 24.52 min Scan# 3614
 Delta R.T. -0.04 min
 Lab File: BG033978.D
 Acq: 25 Apr 2018 7:29

Tgt Ion: 264 Resp: 578331

Ion	Ratio	Lower	Upper
264	100		
260	24.0	17.4	26.0
265	21.7	17.7	26.5

