

Data Path : Z:\HPCHEM1\BNA G\DATA\BG042418\  
 Data File : BG033957.D  
 Acq On : 24 Apr 2018 16:54  
 Operator : SJ/JU  
 Sample : J2475-01  
 Misc :  
 ALS Vial : 8 Sample Multiplier: 1

Instrument :  
 BNA\_G  
 ClientSampled :  
 MW-01

Integration Parameters: rteint.p  
 Integrator: RTE  
 Smoothing : ON  
 Sampling : 1  
 Start Thrs: 0.2  
 Stop Thrs : 0

Filtering: 5  
 Min Area: 3 % of largest Peak  
 Max Peaks: 100  
 Peak Location: TOP

If leading or trailing edge < 100 prefer < Baseline drop else tangent >  
 Peak separation: 5

Method : Z:\HPCHEM1\BNA G\METHODS\8270-BG041918.M  
 Title : ASP BNA STANDARDS FOR 5 POINT CALIBRATION

Signal : TIC

peak #	R.T. min	first scan	max scan	last scan	PK TY	peak height	corr. area	corr. % max.	% of total
1	4.994	285	290	296	rVB	39043	59974	1.03%	0.115%
2	5.441	358	366	379	rBV	914479	1428051	24.54%	2.730%
3	6.998	622	631	641	rBV	593043	964504	16.57%	1.844%
4	7.362	686	693	702	rBV	1520334	2614567	44.93%	4.999%
5	7.826	765	772	779	rBV	312597	534724	9.19%	1.022%
6	8.149	818	827	840	rVB	1398096	2408947	41.39%	4.606%
7	8.978	959	968	976	rBV	1121573	1951822	33.54%	3.732%
8	10.611	1238	1246	1253	rBV	429778	765299	13.15%	1.463%
9	13.085	1659	1667	1674	rBV	3038524	4753561	81.68%	9.088%
10	13.884	1798	1803	1806	rBV2	37101	58817	1.01%	0.112%
11	14.295	1869	1873	1882	rVB2	49603	79528	1.37%	0.152%
12	14.377	1882	1887	1891	rBV2	41227	64716	1.11%	0.124%
13	14.459	1891	1901	1910	rBV2	685066	1156946	19.88%	2.212%
14	15.194	2020	2026	2030	rBV7	32482	62912	1.08%	0.120%
15	15.259	2032	2037	2039	rBV4	67951	112223	1.93%	0.215%
16	15.952	2148	2155	2163	rBV	2407275	3566367	61.28%	6.819%
17	16.193	2192	2196	2199	rBV3	103062	154199	2.65%	0.295%
18	16.222	2199	2201	2208	rVB	84010	109811	1.89%	0.210%
19	16.504	2247	2249	2256	rVB5	46641	72989	1.25%	0.140%
20	16.616	2265	2268	2272	rVB2	48310	62894	1.08%	0.120%
21	16.816	2299	2302	2311	rBV2	59481	96343	1.66%	0.184%
22	16.998	2329	2333	2336	rBV2	53890	72149	1.24%	0.138%
23	17.133	2351	2356	2362	rVB	306736	411082	7.06%	0.786%
24	17.209	2364	2369	2379	rVV2	839332	1402883	24.11%	2.682%
25	17.291	2379	2383	2389	rVB	97006	132410	2.28%	0.253%
26	17.397	2398	2401	2407	rVB	112519	145807	2.51%	0.279%
27	17.597	2431	2435	2439	rBV	206190	252141	4.33%	0.482%
28	17.732	2456	2458	2463	rVB	73485	76384	1.31%	0.146%
29	17.897	2481	2486	2491	rVB	751822	952285	16.36%	1.821%
30	18.126	2521	2525	2530	rVB2	192098	268821	4.62%	0.514%
31	18.326	2556	2559	2563	rVB	88346	109950	1.89%	0.210%
32	18.608	2603	2607	2611	rBV	197407	238761	4.10%	0.456%
33	19.048	2679	2682	2685	rBV3	98595	136151	2.34%	0.260%
34	19.407	2740	2743	2748	rBV4	118344	147916	2.54%	0.283%

Data Path : Z:\HPCHEM1\BNA G\DATA\BG042418\  
 Data File : BG033957.D  
 Acq On : 24 Apr 2018 16:54  
 Operator : SJ/JU  
 Sample : J2475-01  
 Misc :  
 ALS Vial : 8 Sample Multiplier: 1

Instrument :  
 BNA\_G  
 ClientSampleId :  
 MW-01

Integration Parameters: rteint.p  
 Integrator: RTE  
 Smoothing : ON  
 Sampling : 1  
 Start Thrs: 0.2  
 Stop Thrs : 0

Filtering: 5  
 Min Area: 3 % of largest Peak  
 Max Peaks: 100  
 Peak Location: TOP

If leading or trailing edge < 100 prefer < Baseline drop else tangent >  
 Peak separation: 5

Method : Z:\HPCHEM1\BNA G\METHODS\8270-BG041918.M  
 Title : ASP BNA STANDARDS FOR 5 POINT CALIBRATION

35	19.601	2773	2776	2780	rBV5	58662	100858	1.73%	0.193%
36	19.771	2802	2805	2809	rBV5	79812	108266	1.86%	0.207%
37	19.847	2812	2818	2823	rVB	4445379	5819769	100.00%	11.127%
38	20.029	2846	2849	2853	rBV3	81453	118390	2.03%	0.226%
39	20.094	2858	2860	2864	rVB	107972	108597	1.87%	0.208%
40	20.217	2878	2881	2883	rBV4	85565	93330	1.60%	0.178%
41	20.282	2890	2892	2895	rVB3	113127	97546	1.68%	0.186%
42	20.311	2895	2897	2900	rBV3	56836	62335	1.07%	0.119%
43	20.452	2918	2921	2924	rBV5	88278	115244	1.98%	0.220%
44	20.494	2925	2928	2934	rVB5	141379	250537	4.30%	0.479%
45	20.552	2934	2938	2940	rBV2	224794	286408	4.92%	0.548%
46	20.640	2951	2953	2955	rBV2	77089	63102	1.08%	0.121%
47	20.693	2960	2962	2965	rBV3	143911	162117	2.79%	0.310%
48	20.817	2979	2983	2989	rVB4	170419	227161	3.90%	0.434%
49	20.881	2991	2994	2997	rBV4	125008	160480	2.76%	0.307%
50	20.922	2998	3001	3005	rBV3	289698	422795	7.26%	0.808%
51	20.999	3009	3014	3016	rBV4	310024	517725	8.90%	0.990%
52	21.105	3026	3032	3036	rBV4	306263	645232	11.09%	1.234%
53	21.204	3045	3049	3057	rVB7	380055	763973	13.13%	1.461%
54	21.275	3057	3061	3063	rVV3	282345	382659	6.58%	0.732%
55	21.304	3063	3066	3070	rVB3	361548	463462	7.96%	0.886%
56	21.369	3071	3077	3081	rBV7	131292	364565	6.26%	0.697%
57	21.416	3082	3085	3088	rVV3	275516	428853	7.37%	0.820%
58	21.463	3088	3093	3097	rVV2	1105508	2148758	36.92%	4.108%
59	21.504	3097	3100	3104	rVB3	669665	1002788	17.23%	1.917%
60	21.575	3109	3112	3114	rBV	203123	247530	4.25%	0.473%
61	21.604	3114	3117	3119	rBV2	172432	165743	2.85%	0.317%
62	21.722	3132	3137	3146	rVB2	586887	1164434	20.01%	2.226%
63	21.816	3147	3153	3158	rBV4	585569	1197923	20.58%	2.290%
64	21.968	3175	3179	3181	rBV3	204411	299862	5.15%	0.573%
65	22.045	3188	3192	3200	rVB3	572442	1053030	18.09%	2.013%
66	22.145	3204	3209	3221	rVB5	427069	1226119	21.07%	2.344%
67	22.297	3229	3235	3245	rVB3	361770	840947	14.45%	1.608%
68	22.397	3247	3252	3259	rBV3	543592	1049348	18.03%	2.006%
69	22.568	3276	3281	3287	rBV4	183627	457650	7.86%	0.875%
70	22.662	3294	3297	3307	rVB5	234866	493032	8.47%	0.943%
71	22.785	3312	3318	3328	rBV4	402986	945508	16.25%	1.808%

Data Path : Z:\HPCHEM1\BNA G\DATA\BG042418\  
Data File : BG033957.D  
Acq On : 24 Apr 2018 16:54  
Operator : SJ/JU  
Sample : J2475-01  
Misc :  
ALS Vial : 8 Sample Multiplier: 1

Instrument :  
BNA\_G  
ClientSampleId :  
MW-01

Integration Parameters: rteint.p  
Integrator: RTE  
Smoothing : ON Filtering: 5  
Sampling : 1 Min Area: 3 % of largest Peak  
Start Thrs: 0.2 Max Peaks: 100  
Stop Thrs : 0 Peak Location: TOP

If leading or trailing edge < 100 prefer < Baseline drop else tangent >  
Peak separation: 5

Method : Z:\HPCHEM1\BNA G\METHODS\8270-BG041918.M  
Title : ASP BNA STANDARDS FOR 5 POINT CALIBRATION

72	23.073	3360	3367	3376	rBV4	264885	596974	10.26%	1.141%
73	23.525	3438	3444	3451	rBV2	216974	442202	7.60%	0.845%
74	23.854	3496	3500	3508	rVB6	79795	171816	2.95%	0.328%
75	24.383	3586	3590	3598	rVB4	62478	137603	2.36%	0.263%
76	24.524	3604	3614	3624	rBV	560118	1472944	25.31%	2.816%

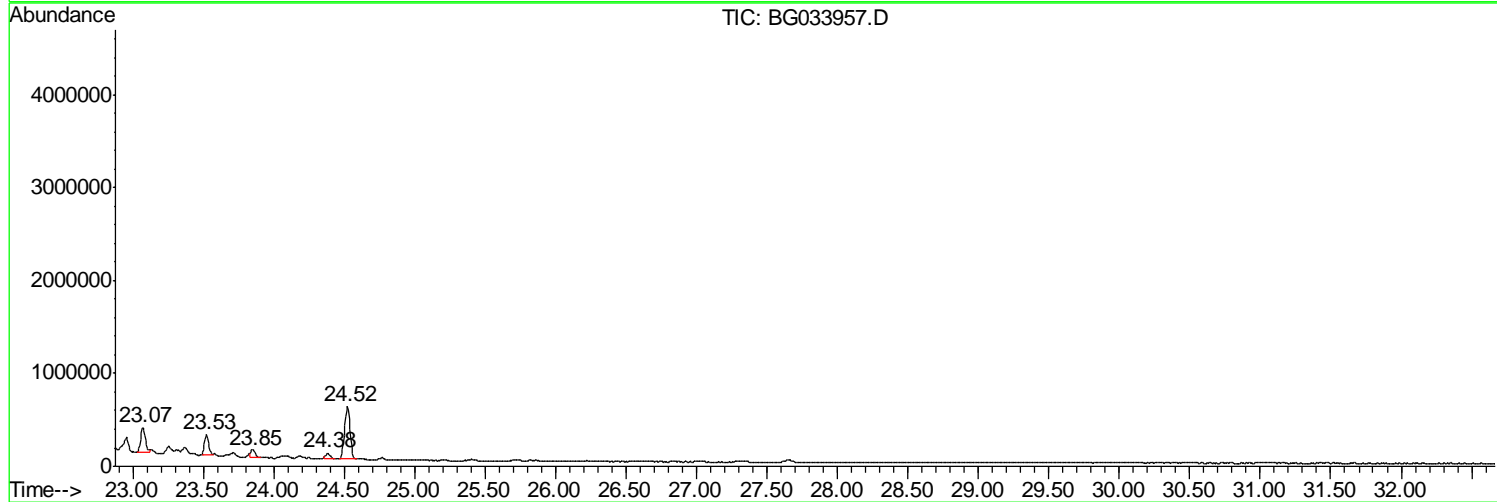
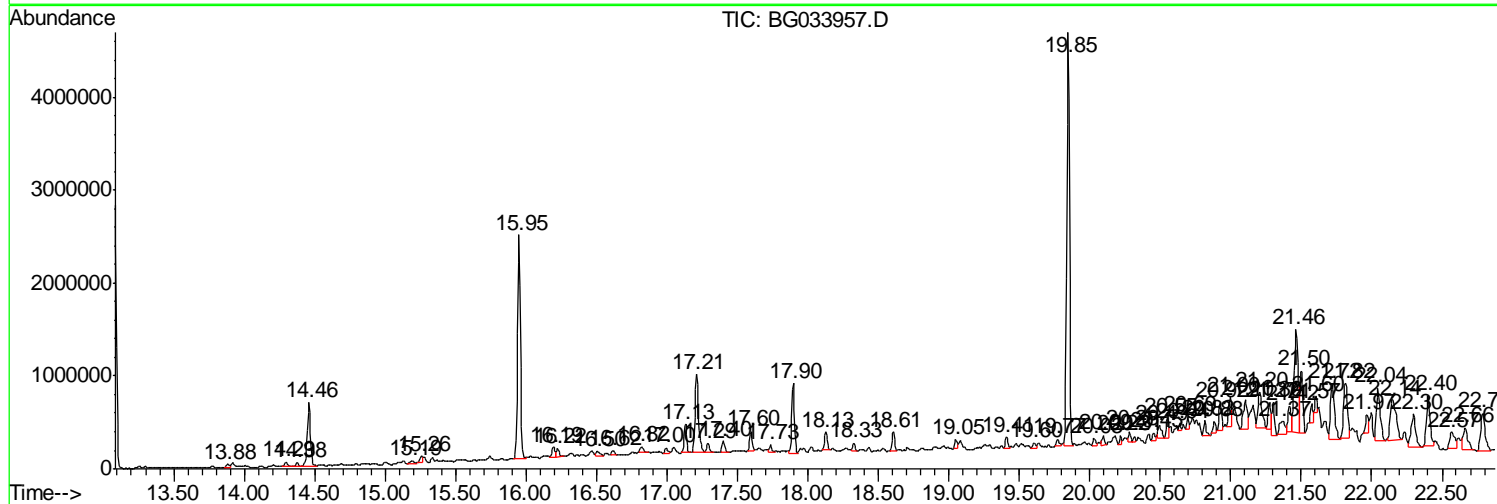
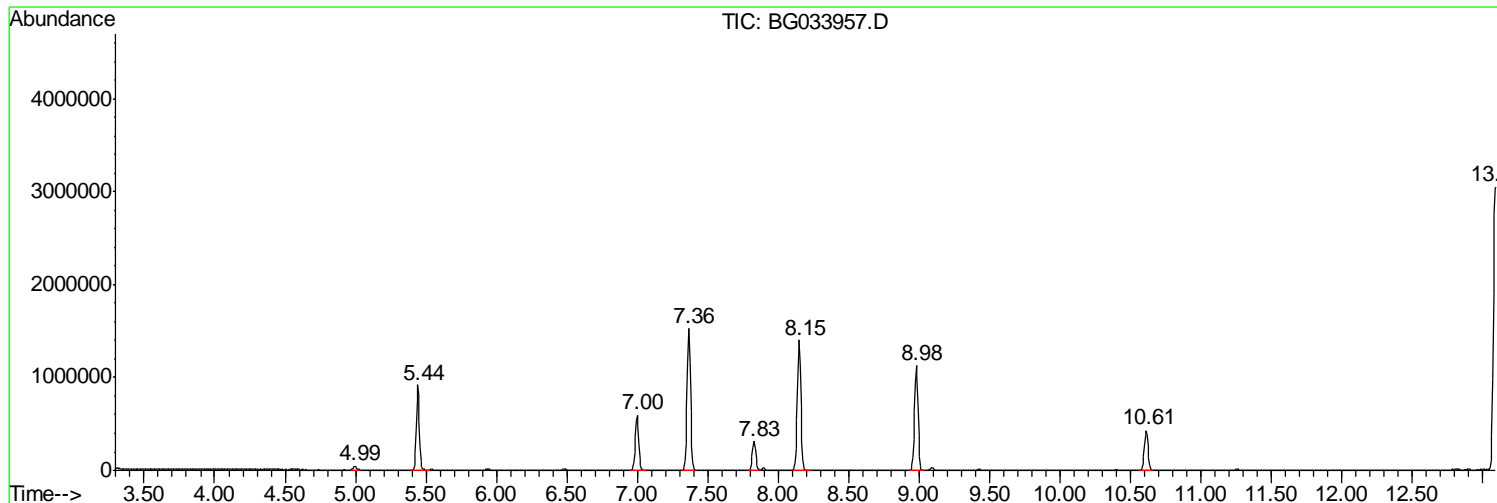
Sum of corrected areas: 52303549

Data Path : Z:\HPCHEM1\BNA G\DATA\BG042418\  
 Data File : BG033957.D  
 Acq On : 24 Apr 2018 16:54  
 Operator : SJ/JU  
 Sample : J2475-01  
 Misc :  
 ALS Vial : 8 Sample Multiplier: 1

Instrument :  
 BNA\_G  
 ClientSampleId :  
 MW-01

Quant Method : Z:\HPCHEM1\BNA G\METHODS\8270-BG041918.M  
 Quant Title : ASP BNA STANDARDS FOR 5 POINT CALIBRATION

TIC Library : C:\Database\NIST11.L  
 TIC Integration Parameters: LSCINT.P



Data Path : Z:\HPCHEM1\BNA G\DATA\BG042418\  
 Data File : BG033957.D  
 Acq On : 24 Apr 2018 16:54  
 Operator : SJ/JU  
 Sample : J2475-01  
 Misc :  
 ALS Vial : 8 Sample Multiplier: 1

Instrument :  
 BNA\_G  
 ClientSampled :  
 MW-01

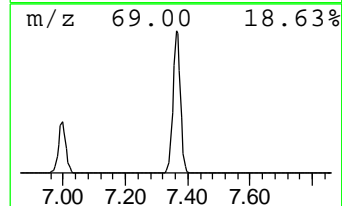
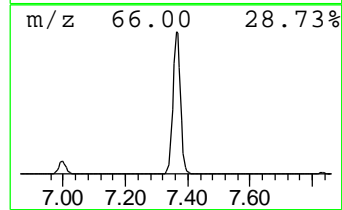
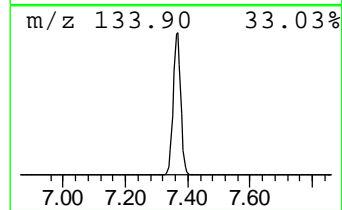
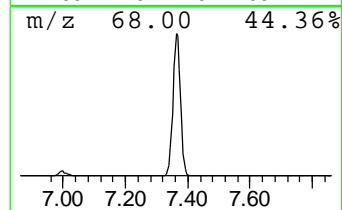
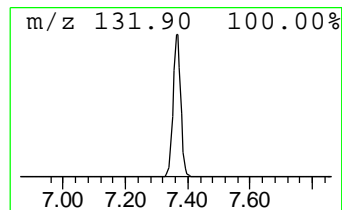
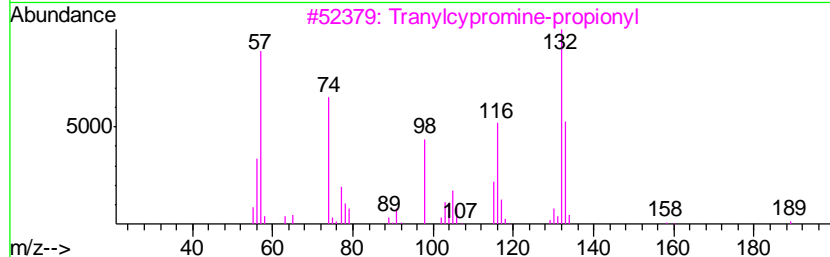
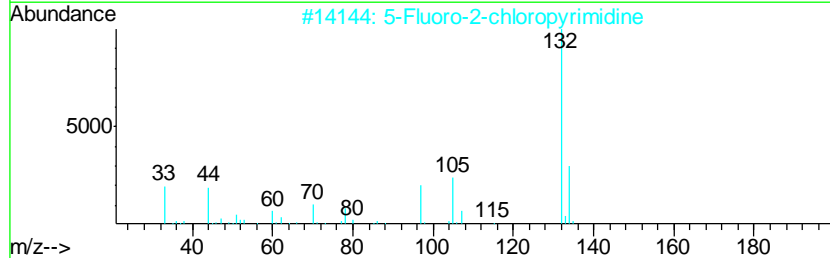
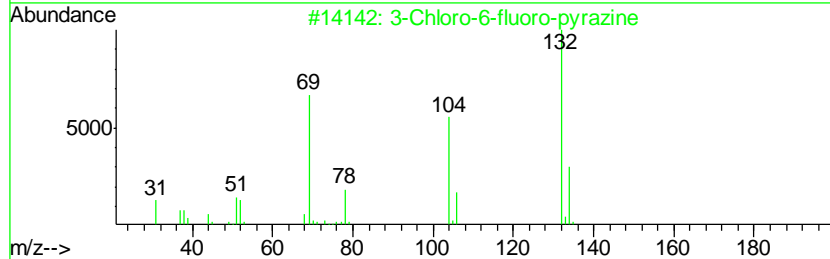
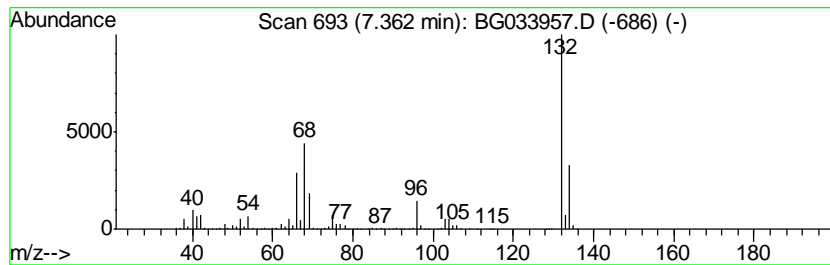
Quant Method : Z:\HPCHEM1\BNA G\METHODS\8270-BG041918.M  
 Quant Title : ASP BNA STANDARDS FOR 5 POINT CALIBRATION

TIC Library : C:\Database\NIST11.L  
 TIC Integration Parameters: LSCINT.P

\*\*\*\*\*  
 Peak Number 1 unknown7.36 Concentration Rank 1

R.T.	EstConc	Area	Relative to ISTD	R.T.
7.36	97.79 ng	2614570	1,4-Dichlorobenzene-d4	7.83

Hit#	of	Tentative ID	MW	MolForm	CAS#	Qual
1	5	3-Chloro-6-fluoro-pyrazine	132	C4H2ClFN2	1000146-10-7	35
2		5-Fluoro-2-chloropyrimidine	132	C4H2ClFN2	062802-42-0	12
3		Tranlycypromine-propionyl	189	C12H15NO	1000123-86-3	10
4		Benzene, 1-ethenyl-3,5-dimethyl-	132	C10H12	005379-20-4	9
5		Xenon	132	Xe	007440-63-3	9



Data Path : Z:\HPCHEM1\BNA G\DATA\BG042418\  
 Data File : BG033957.D  
 Acq On : 24 Apr 2018 16:54  
 Operator : SJ/JU  
 Sample : J2475-01  
 Misc :  
 ALS Vial : 8 Sample Multiplier: 1

Instrument :  
 BNA\_G  
 ClientSampled :  
 MW-01

Quant Method : Z:\HPCHEM1\BNA G\METHODS\8270-BG041918.M  
 Quant Title : ASP BNA STANDARDS FOR 5 POINT CALIBRATION

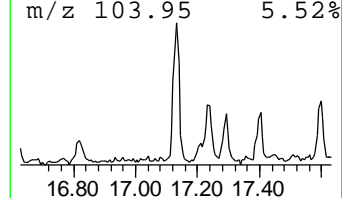
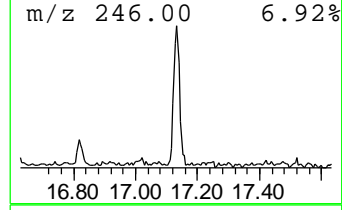
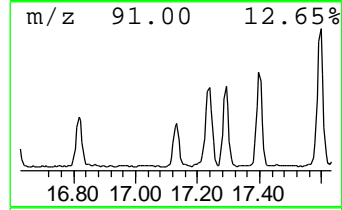
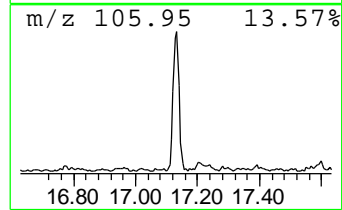
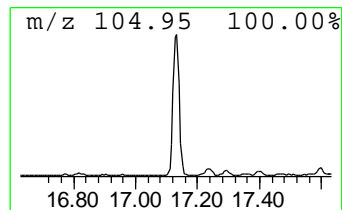
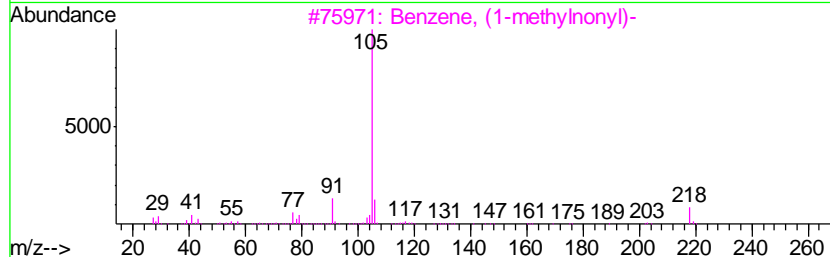
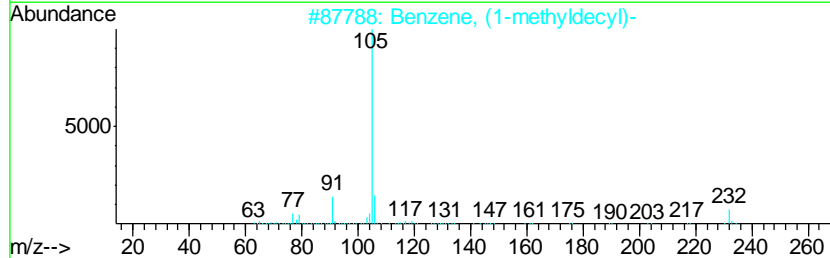
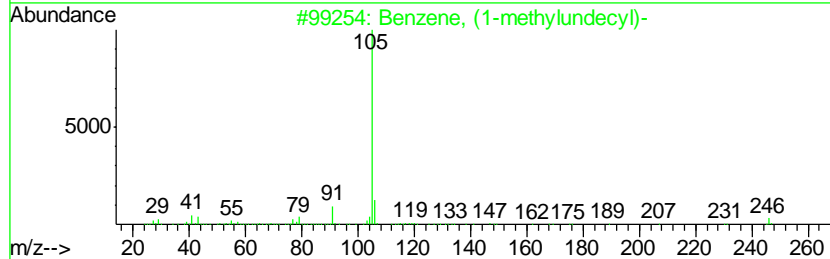
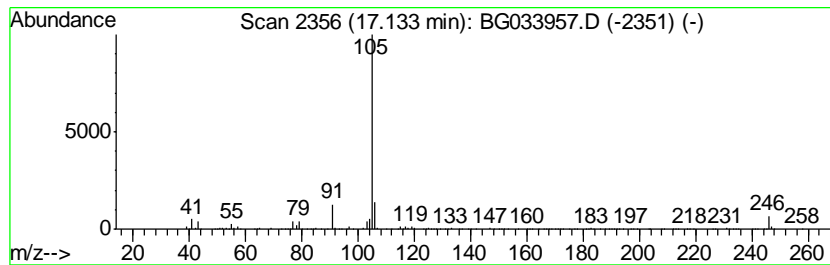
TIC Library : C:\Database\NIST11.L  
 TIC Integration Parameters: LSCINT.P

\*\*\*\*\*  
 Peak Number 3 Benzene, (1-methylundecyl)- Concentration Rank 15

R.T.	EstConc	Area	Relative to ISTD	R.T.
17.13	5.86 ng	411082	Phenanthrene-d10	17.21

Hit#	of	Tentative ID	MW	MolForm	CAS#	Qual
1	5	Benzene, (1-methylundecyl)-	246	C18H30	002719-61-1	94
2		Benzene, (1-methyldecyl)-	232	C17H28	004536-88-3	87
3		Benzene, (1-methylnonyl)-	218	C16H26	004537-13-7	74
4		Benzene, (1-methylheptyl)-	190	C14H22	000777-22-0	64
5		Benzene, (1-methyldodecyl)-	260	C19H32	004534-53-6	53



Data Path : Z:\HPCHEM1\BNA G\DATA\BG042418\  
 Data File : BG033957.D  
 Acq On : 24 Apr 2018 16:54  
 Operator : SJ/JU  
 Sample : J2475-01  
 Misc :  
 ALS Vial : 8 Sample Multiplier: 1

Instrument :  
 BNA\_G  
 ClientSampled :  
 MW-01

Quant Method : Z:\HPCHEM1\BNA G\METHODS\8270-BG041918.M  
 Quant Title : ASP BNA STANDARDS FOR 5 POINT CALIBRATION

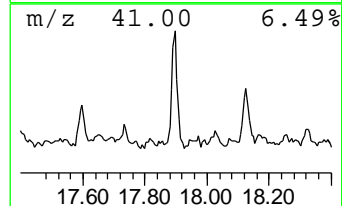
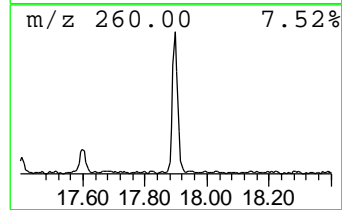
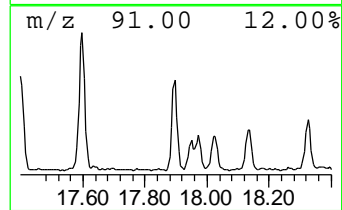
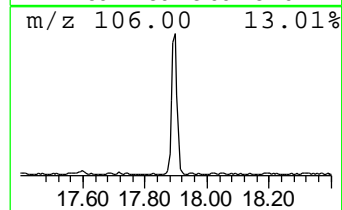
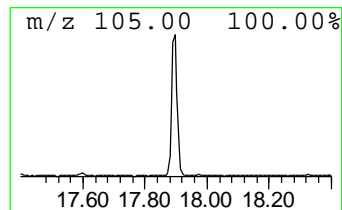
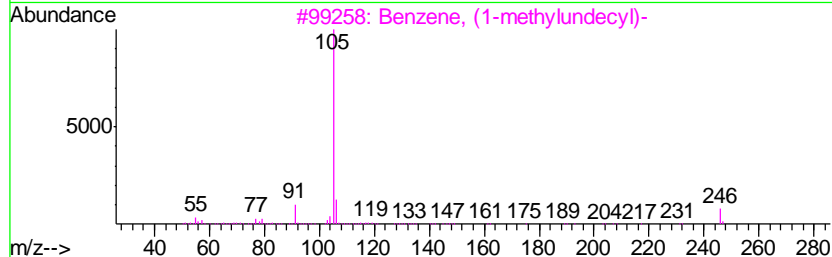
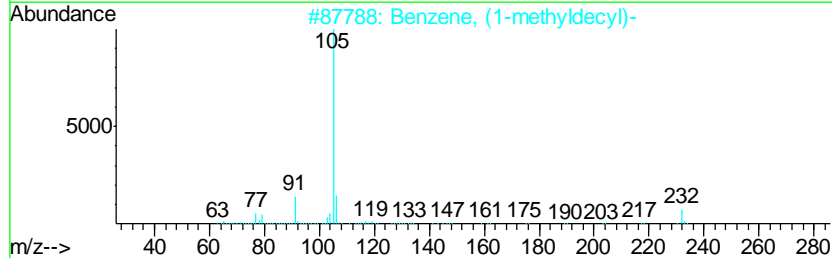
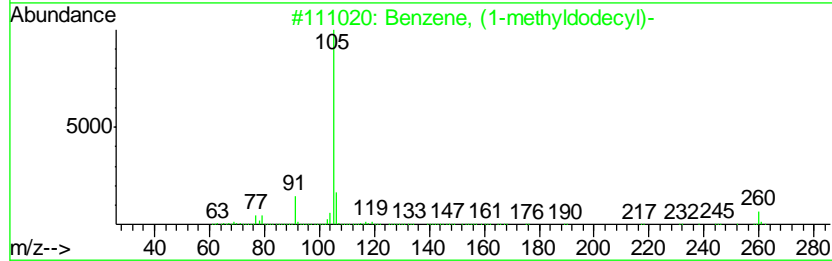
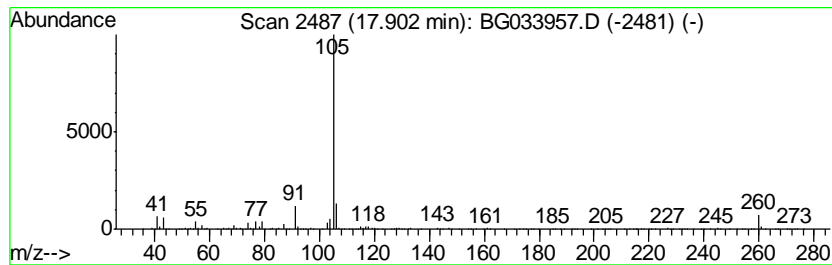
TIC Library : C:\Database\NIST11.L  
 TIC Integration Parameters: LSCINT.P

\*\*\*\*\*  
 Peak Number 4 Benzene, (1-methyldodecyl)- Concentration Rank 3

R.T.	EstConc	Area	Relative to ISTD	R.T.
17.90	13.58 ng	952285	Phenanthrene-d10	17.21

Hit#	of	Tentative ID	MW	MolForm	CAS#	Qual
1	5	Benzene, (1-methyldodecyl)-	260	C19H32	004534-53-6	95
2		Benzene, (1-methyldecyl)-	232	C17H28	004536-88-3	87
3		Benzene, (1-methylundecyl)-	246	C18H30	002719-61-1	81
4		Benzene, (1-methylnonadecyl)-	358	C26H46	002398-66-5	53
5		Benzene, (1-methylnonyl)-	218	C16H26	004537-13-7	50



Data Path : Z:\HPCHEM1\BNA G\DATA\BG042418\  
 Data File : BG033957.D  
 Acq On : 24 Apr 2018 16:54  
 Operator : SJ/JU  
 Sample : J2475-01  
 Misc :  
 ALS Vial : 8 Sample Multiplier: 1

Instrument :  
 BNA\_G  
 ClientSampled :  
 MW-01

Quant Method : Z:\HPCHEM1\BNA G\METHODS\8270-BG041918.M  
 Quant Title : ASP BNA STANDARDS FOR 5 POINT CALIBRATION

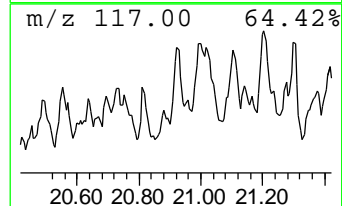
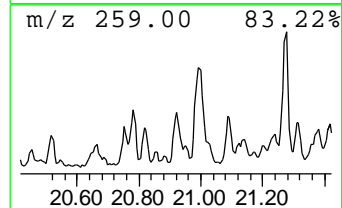
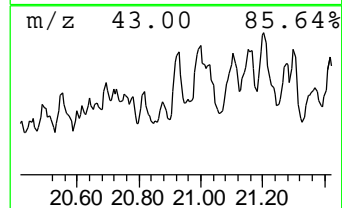
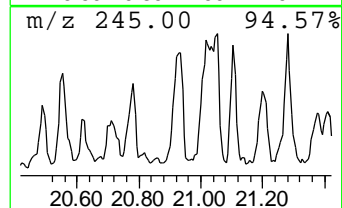
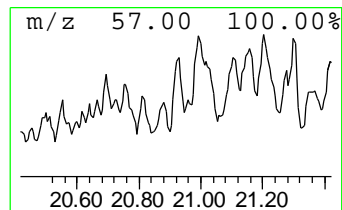
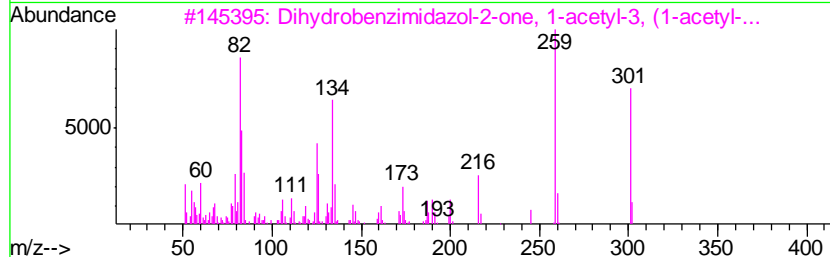
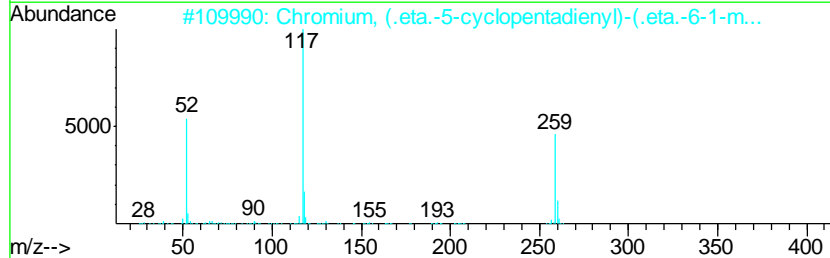
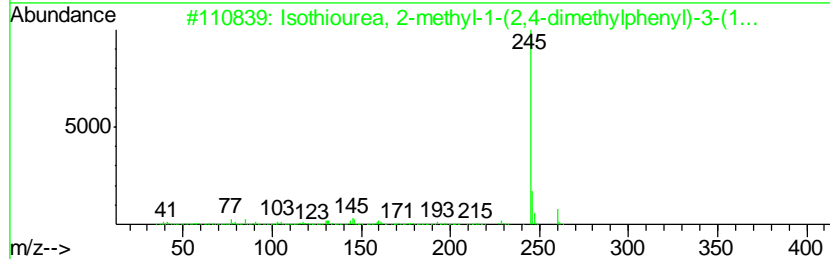
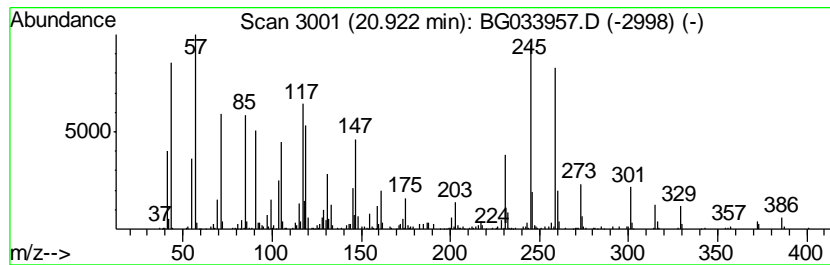
TIC Library : C:\Database\NIST11.L  
 TIC Integration Parameters: LSCINT.P

\*\*\*\*\*  
 Peak Number 5 unknown20.92 Concentration Rank 20

R.T.	EstConc	Area	Relative to ISTD	R.T.
20.92	3.94 ng	422795	Chrysene-d12	21.46

Hit#	of	Tentative ID	MW	MolForm	CAS#	Qual
1	5	Isothiourea, 2-methyl-1-(2,4-dim...	260	C15H20N2S	1000267-73-5	27
2		Chromium, (.eta.-5-cyclopentadie...	259	C16H15Cr	1000158-74-0	22
3		Dihydrobenzimidazol-2-one, 1-ace...	301	C16H19N3O3	1000280-84-2	20
4		2,3-Dihydro-4-methoxy-6,7-methyl...	245	C13H11NO4	094521-55-8	15
5		2-Butene-1,4-diol, 2,3-dibromo-,...	244	C4H6Br2O2	021285-46-1	14





Data Path : Z:\HPCHEM1\BNA G\DATA\BG042418\  
 Data File : BG033957.D  
 Acq On : 24 Apr 2018 16:54  
 Operator : SJ/JU  
 Sample : J2475-01  
 Misc :  
 ALS Vial : 8 Sample Multiplier: 1

Instrument :  
 BNA\_G  
 ClientSampled :  
 MW-01

Quant Method : Z:\HPCHEM1\BNA G\METHODS\8270-BG041918.M  
 Quant Title : ASP BNA STANDARDS FOR 5 POINT CALIBRATION

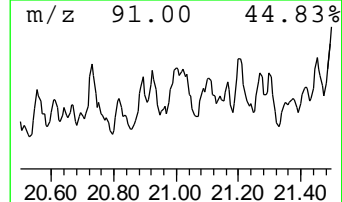
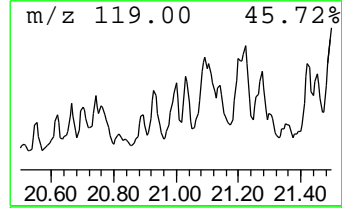
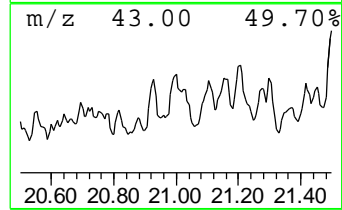
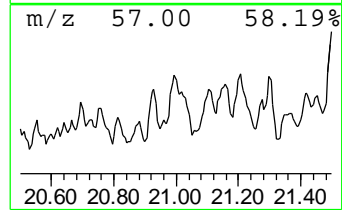
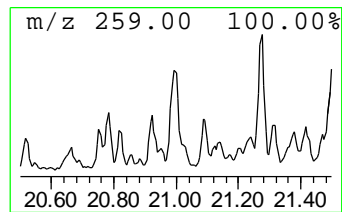
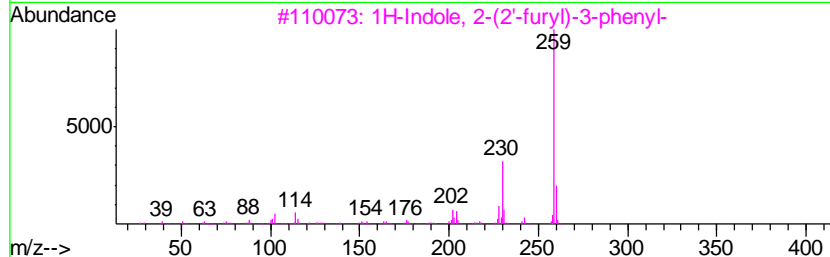
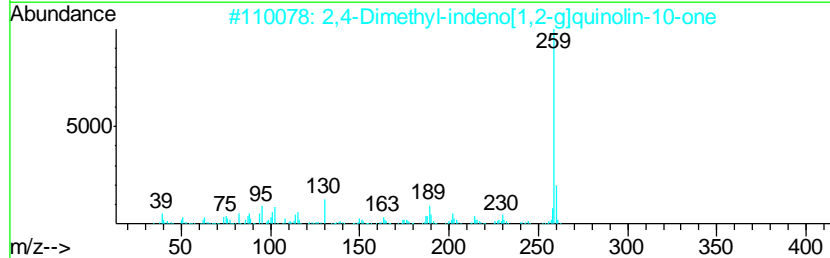
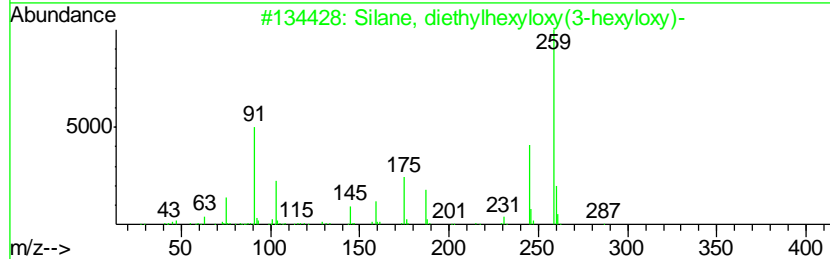
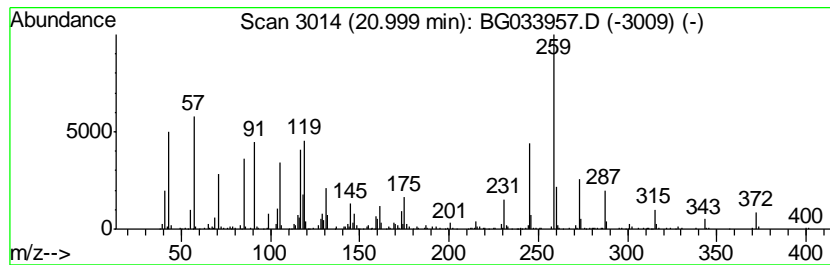
TIC Library : C:\Database\NIST11.L  
 TIC Integration Parameters: LSCINT.P

\*\*\*\*\*  
 Peak Number 6 unknown21.00 Concentration Rank 16

R.T.	EstConc	Area	Relative to ISTD	R.T.
21.00	4.82 ng	517725	Chrysene-d12	21.46

Hit#	of	Tentative ID	MW	MolForm	CAS#	Qual
1	5	Silane, diethylhexyloxy(3-hexylo...	288	C16H36O2Si	1000363-45-5	25
2		2,4-Dimethyl-indeno[1,2- $\alpha$ ]quinol...	259	C18H13NO	1000297-34-2	14
3		1H-Indole, 2-(2'-furyl)-3-phenyl-	259	C18H13NO	163064-82-2	14
4		Cyclohex-3-ene-1-carboxylic acid...	259	C15H17NO3	311316-40-2	14
5		Pyrazole, 5-butyl-3-methyl-1-(4-...	259	C14H17N3O2	1000272-63-4	14



Data Path : Z:\HPCHEM1\BNA G\DATA\BG042418\  
 Data File : BG033957.D  
 Acq On : 24 Apr 2018 16:54  
 Operator : SJ/JU  
 Sample : J2475-01  
 Misc :  
 ALS Vial : 8 Sample Multiplier: 1

Instrument :  
 BNA\_G  
 ClientSampled :  
 MW-01

Quant Method : Z:\HPCHEM1\BNA G\METHODS\8270-BG041918.M  
 Quant Title : ASP BNA STANDARDS FOR 5 POINT CALIBRATION

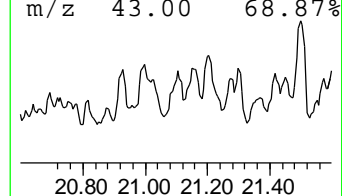
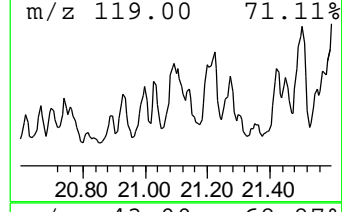
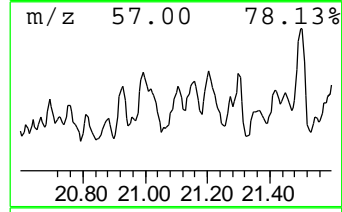
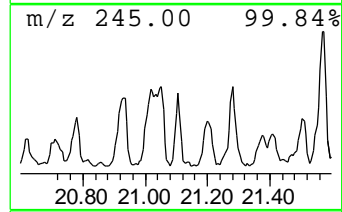
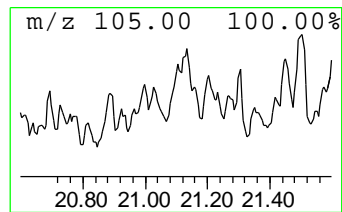
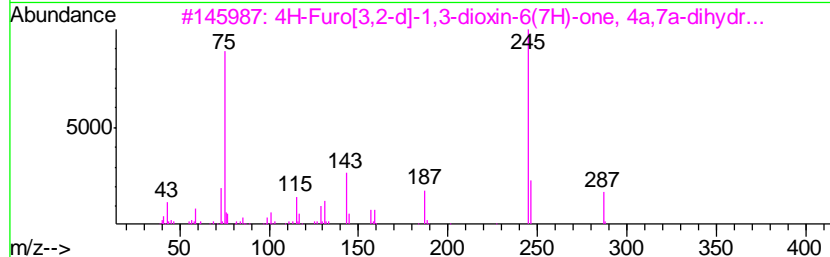
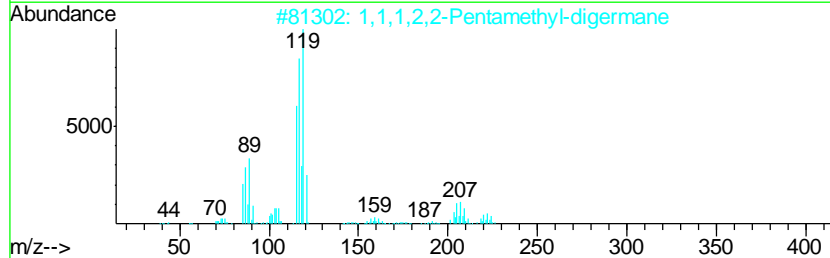
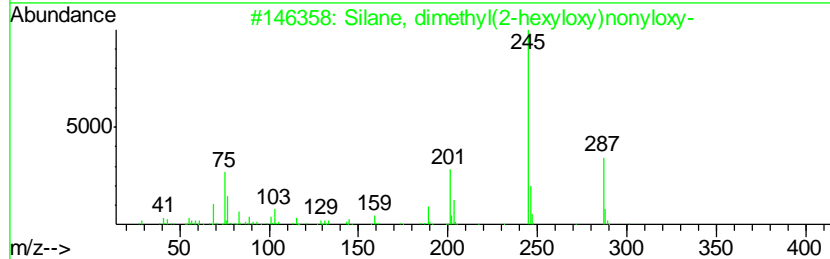
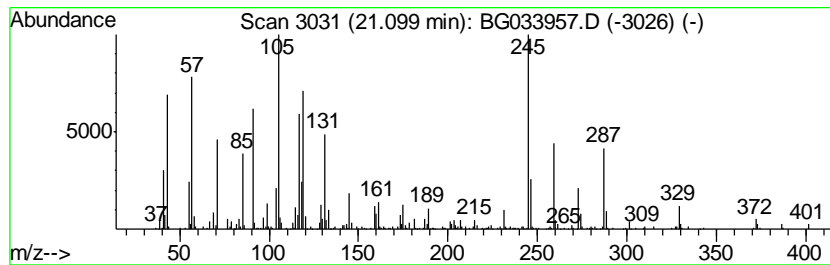
TIC Library : C:\Database\NIST11.L  
 TIC Integration Parameters: LSCINT.P

\*\*\*\*\*  
 Peak Number 7 unknown21.10 Concentration Rank 13

R.T.	EstConc	Area	Relative to ISTD	R.T.
21.10	6.01 ng	645232	Chrysene-d12	21.46

Hit#	of	Tentative ID	MW	MolForm	CAS#	Qual
1	5	Silane, dimethyl(2-hexyloxy)nony...	302	C17H38O2Si	1000347-68-0	32
2		1,1,1,2,2-Pentamethyl-digermene	224	C5H16Ge2	1000295-95-3	25
3		4H-Furo[3,2-d]-1,3-dioxin-6(7H)-...	302	C14H26O5Si	1000141-70-6	16
4		2,3-Dihydro-4-methoxy-6,7-methyl...	245	C13H11NO4	094521-55-8	14
5		Hexanoic acid, 6-(4-cyanophenyl)...	343	C23H21NO2	080493-99-8	14



Data Path : Z:\HPCHEM1\BNA G\DATA\BG042418\  
 Data File : BG033957.D  
 Acq On : 24 Apr 2018 16:54  
 Operator : SJ/JU  
 Sample : J2475-01  
 Misc :  
 ALS Vial : 8 Sample Multiplier: 1

Instrument :  
 BNA\_G  
 ClientSampleID :  
 MW-01

Quant Method : Z:\HPCHEM1\BNA G\METHODS\8270-BG041918.M  
 Quant Title : ASP BNA STANDARDS FOR 5 POINT CALIBRATION

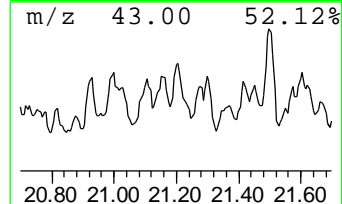
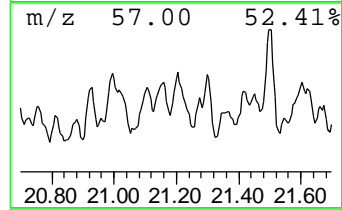
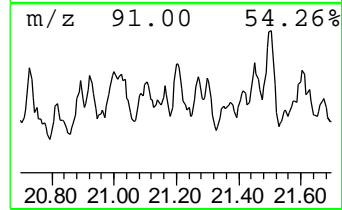
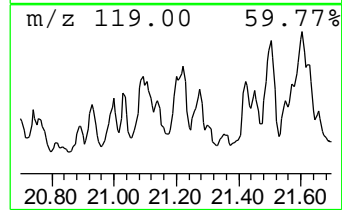
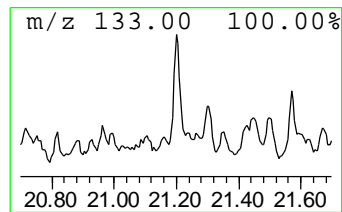
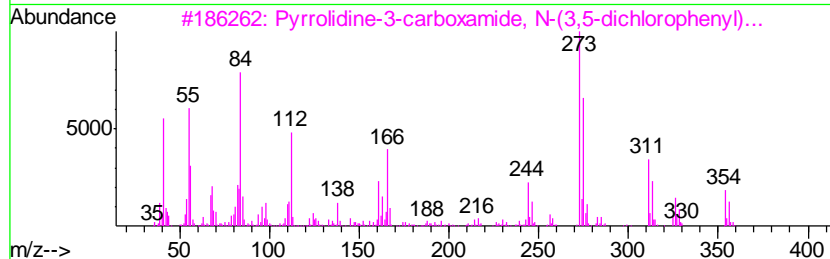
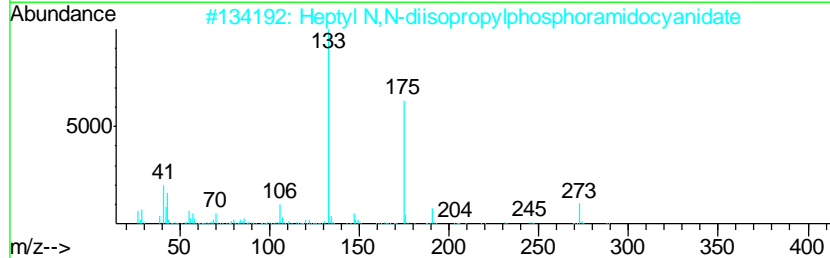
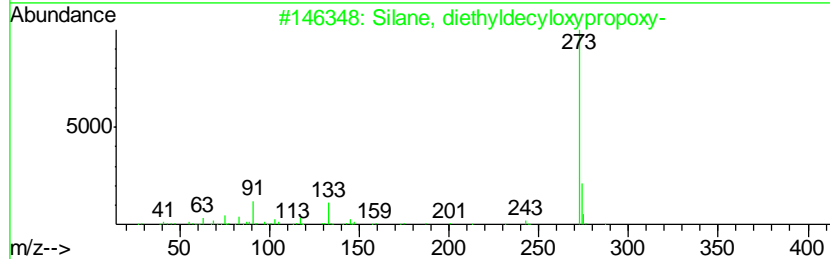
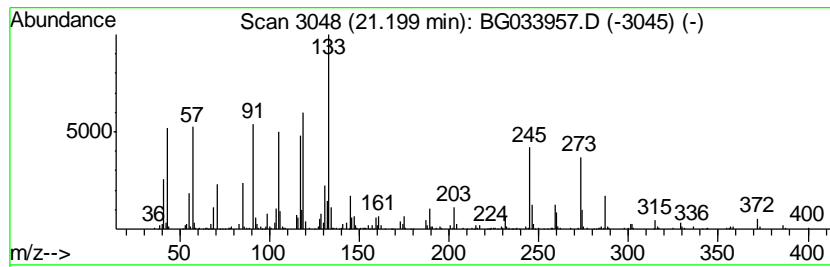
TIC Library : C:\Database\NIST11.L  
 TIC Integration Parameters: LSCINT.P

\*\*\*\*\*  
 Peak Number 8 unknown21.20 Concentration Rank 12

R.T.	EstConc	Area	Relative to ISTD	R.T.
21.20	7.11 ng	763973	Chrysene-d12	21.46

Hit#	of	Tentative ID	MW	MolForm	CAS#	Qual
1	5	Silane, diethyldecyloxypropoxy-	302	C17H38O2Si	1000363-32-6	32
2		Heptyl N,N-diisopropylphosphoram...	288	C14H29N2O2P	1000298-43-2	27
3		Pyrrolidine-3-carboxamide, N-(3,...	354	C17H20Cl2N2O2	309921-63-9	25
4		1,2-Bis[methyl(trimethylene)silyl]...	244	C11H24O2Si2	1000217-00-2	16
5		1H-Indole-2,3-dione, 7-propyl-	189	C11H11NO2	057816-98-5	14



Data Path : Z:\HPCHEM1\BNA G\DATA\BG042418\  
 Data File : BG033957.D  
 Acq On : 24 Apr 2018 16:54  
 Operator : SJ/JU  
 Sample : J2475-01  
 Misc :  
 ALS Vial : 8 Sample Multiplier: 1

Instrument :  
 BNA\_G  
 ClientSampled :  
 MW-01

Quant Method : Z:\HPCHEM1\BNA G\METHODS\8270-BG041918.M  
 Quant Title : ASP BNA STANDARDS FOR 5 POINT CALIBRATION

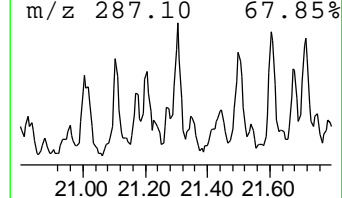
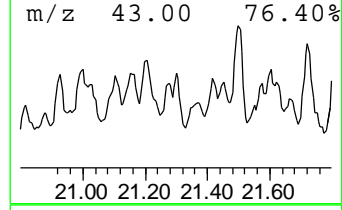
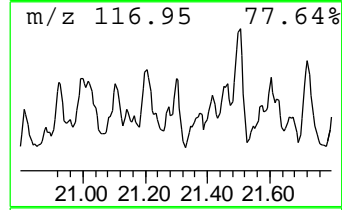
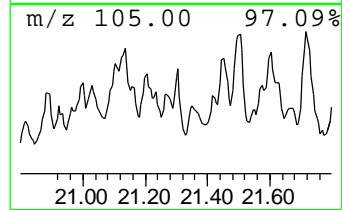
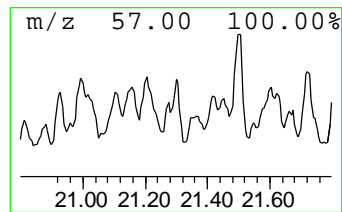
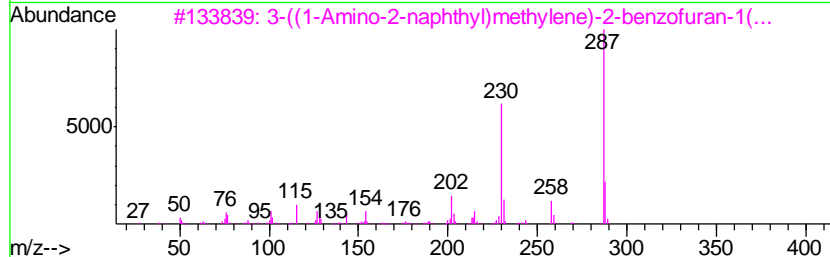
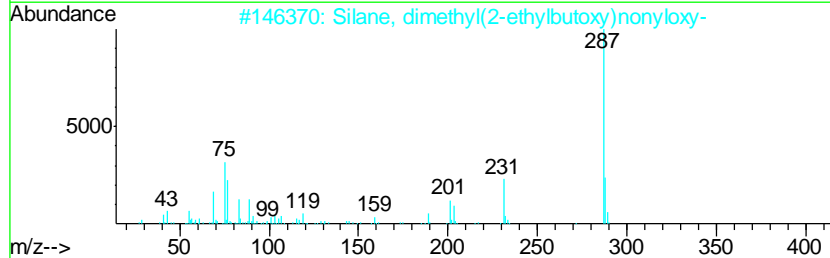
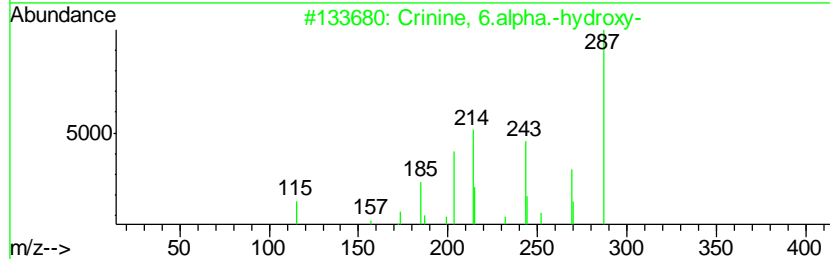
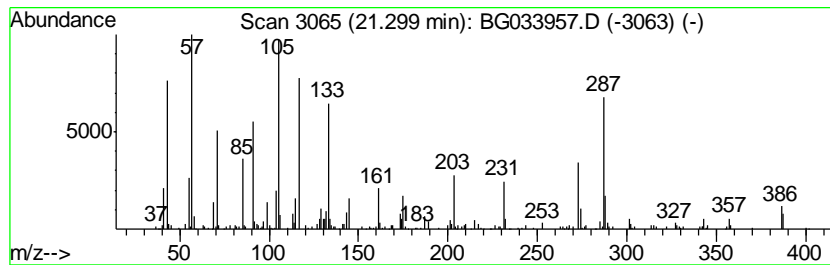
TIC Library : C:\Database\NIST11.L  
 TIC Integration Parameters: LSCINT.P

\*\*\*\*\*  
 Peak Number 9 unknown21.30 Concentration Rank 18

R.T.	EstConc	Area	Relative to ISTD	R.T.
21.30	4.31 ng	463462	Chrysene-d12	21.46

Hit#	of	Tentative ID	MW	MolForm	CAS#	Qual
1	5	Crinine, 6.alpha.-hydroxy-	287	C16H17NO4	080665-67-4	30
2		Silane, dimethyl(2-ethylbutoxy)n...	302	C17H38O2Si	1000347-57-9	27
3		3-((1-Amino-2-naphthyl)methylene...	287	C19H13NO2	1000332-19-1	22
4		Silane, diethylhexyloxyoctyloxy-	316	C18H40O2Si	1000363-07-6	17
5		Silane, diethyl(2-methylpent-3-y...	316	C18H40O2Si	1000363-77-9	16



Data Path : Z:\HPCHEM1\BNA G\DATA\BG042418\  
 Data File : BG033957.D  
 Acq On : 24 Apr 2018 16:54  
 Operator : SJ/JU  
 Sample : J2475-01  
 Misc :  
 ALS Vial : 8 Sample Multiplier: 1

Instrument :  
 BNA\_G  
 ClientSampleId :  
 MW-01

Quant Method : Z:\HPCHEM1\BNA G\METHODS\8270-BG041918.M  
 Quant Title : ASP BNA STANDARDS FOR 5 POINT CALIBRATION

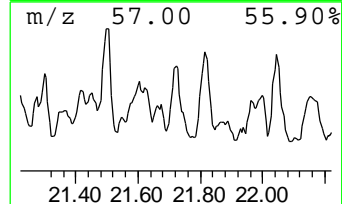
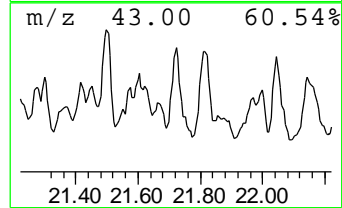
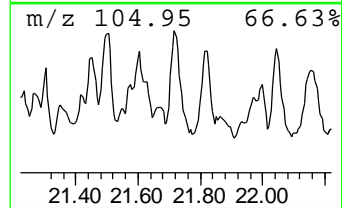
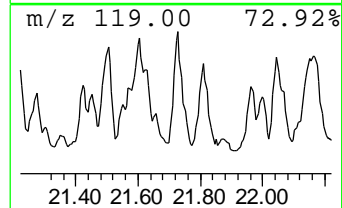
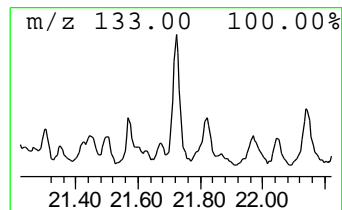
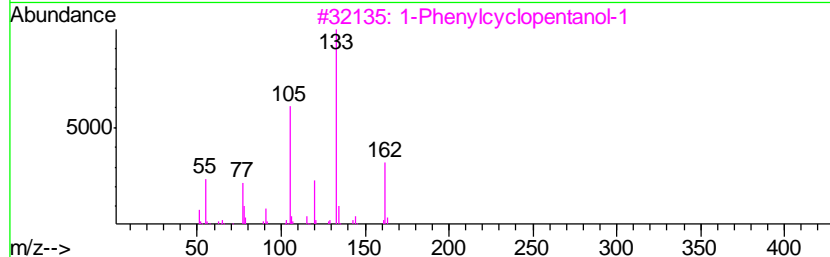
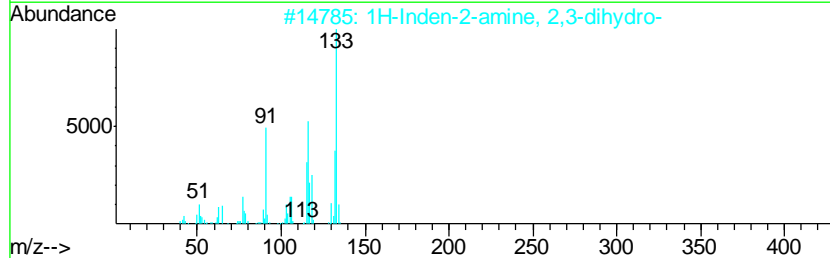
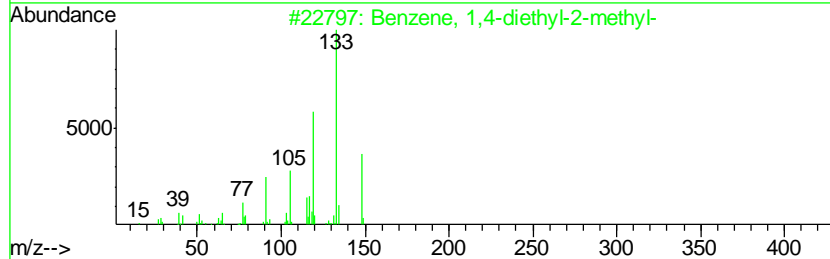
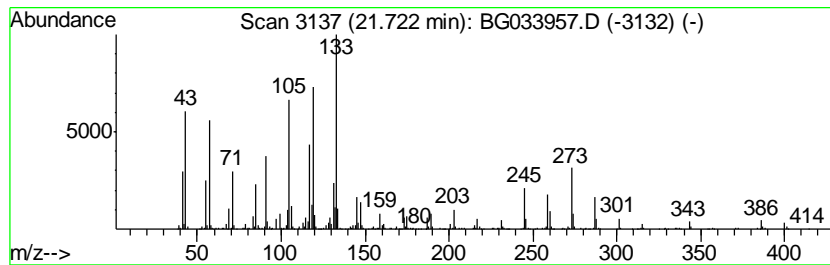
TIC Library : C:\Database\NIST11.L  
 TIC Integration Parameters: LSCINT.P

\*\*\*\*\*  
 Peak Number 10 unknown21.72 Concentration Rank 6

R.T.	EstConc	Area	Relative to ISTD	R.T.
21.72	10.84 ng	1164430	Chrysene-d12	21.46

Hit#	of	Tentative ID	MW	MolForm	CAS#	Qual
1	5	Benzene, 1,4-diethyl-2-methyl-	148	C11H16	013632-94-5	43
2		1H-Inden-2-amine, 2,3-dihydro-	133	C9H11N	002975-41-9	22
3		1-Phenylcyclopentanol-1	162	C11H14O	010487-96-4	18
4		Tolcapone	273	C14H11NO5	134308-13-7	15
5		4-Nitrophenyl-.beta.-phenylpropi...	271	C15H13NO4	017895-71-5	14



Data Path : Z:\HPCHEM1\BNA G\DATA\BG042418\  
 Data File : BG033957.D  
 Acq On : 24 Apr 2018 16:54  
 Operator : SJ/JU  
 Sample : J2475-01  
 Misc :  
 ALS Vial : 8 Sample Multiplier: 1

Instrument :  
 BNA\_G  
 ClientSampled :  
 MW-01

Quant Method : Z:\HPCHEM1\BNA G\METHODS\8270-BG041918.M  
 Quant Title : ASP BNA STANDARDS FOR 5 POINT CALIBRATION

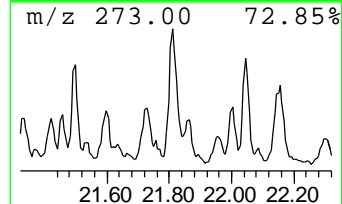
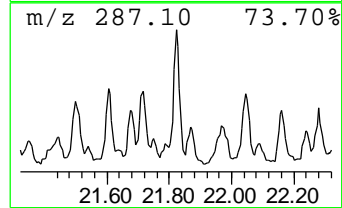
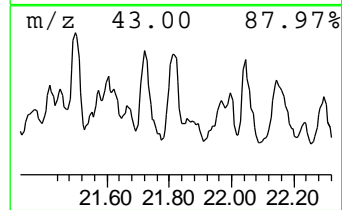
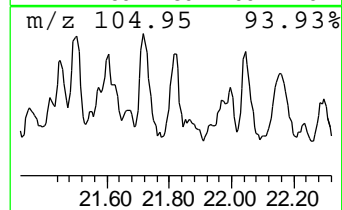
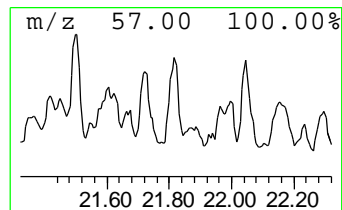
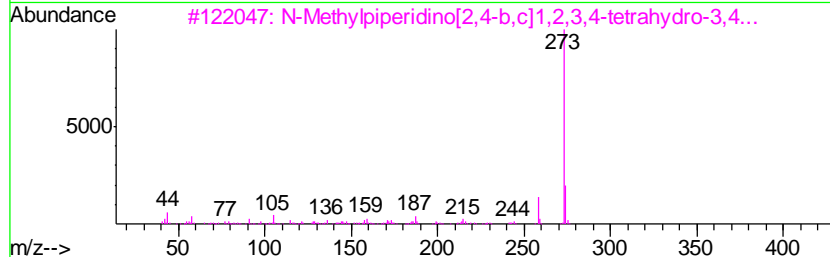
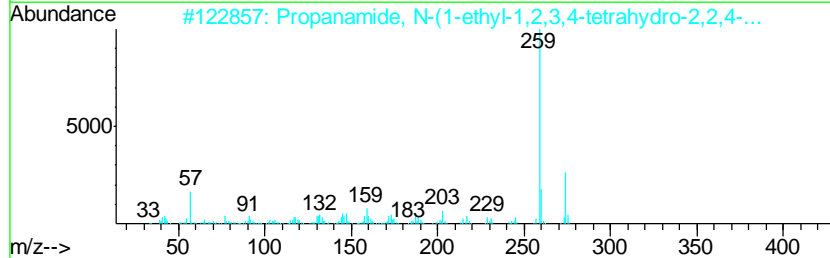
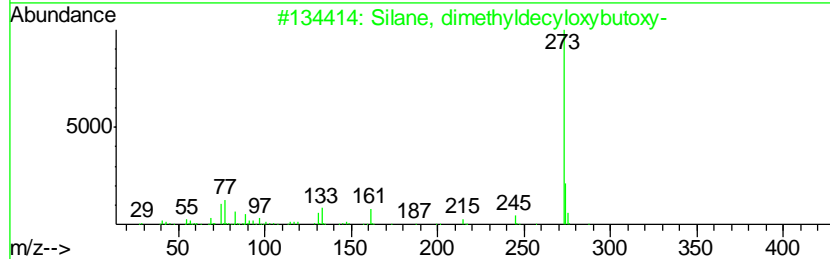
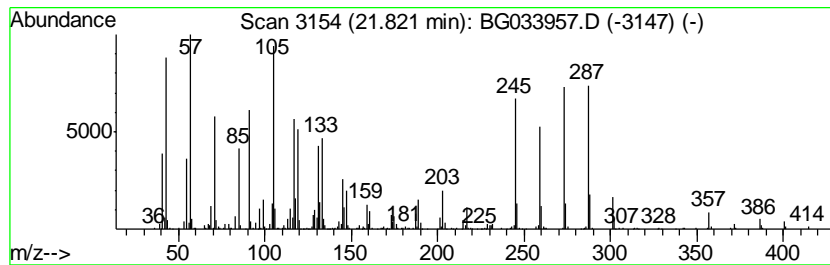
TIC Library : C:\Database\NIST11.L  
 TIC Integration Parameters: LSCINT.P

\*\*\*\*\*  
 Peak Number 11 unknown21.82 Concentration Rank 5

R.T.	EstConc	Area	Relative to ISTD	R.T.
21.82	11.15 ng	1197920	Chrysene-d12	21.46

Hit#	of	Tentative ID	MW	MolForm	CAS#	Qual
1	5	Silane, dimethyldecyloxybutoxy-	288	C16H36O2Si	1000346-92-1	22
2		Propanamide, N-(1-ethyl-1,2,3,4-...	274	C17H26N2O	063134-09-8	18
3		N-Methylpiperidino[2,4-b,c]1,2,3...	273	C18H27NO	1000128-54-7	15
4		Phosphoric acid, dimethyl(4-meth...	288	C13H21O5P	094444-80-1	14
5		Silane, dimethylisobutoxydecyloxy-	288	C16H36O2Si	1000346-76-9	14



Data Path : Z:\HPCHEM1\BNA G\DATA\BG042418\  
 Data File : BG033957.D  
 Acq On : 24 Apr 2018 16:54  
 Operator : SJ/JU  
 Sample : J2475-01  
 Misc :  
 ALS Vial : 8 Sample Multiplier: 1

Instrument :  
 BNA\_G  
 ClientSampled :  
 MW-01

Quant Method : Z:\HPCHEM1\BNA G\METHODS\8270-BG041918.M  
 Quant Title : ASP BNA STANDARDS FOR 5 POINT CALIBRATION

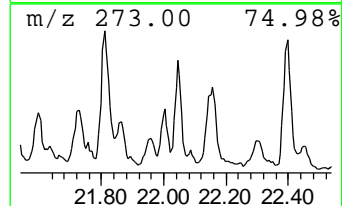
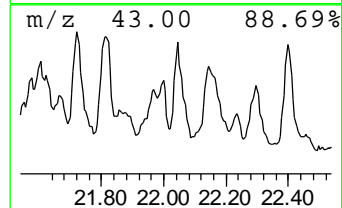
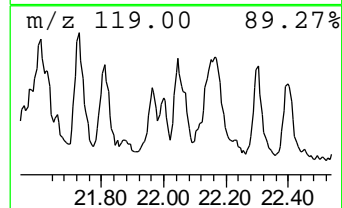
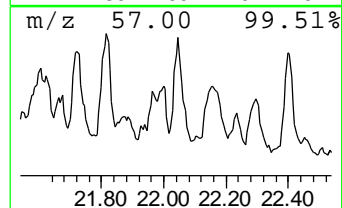
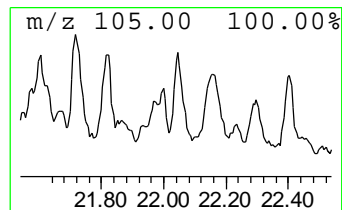
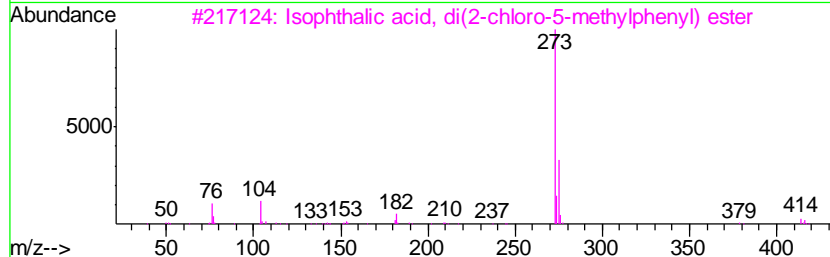
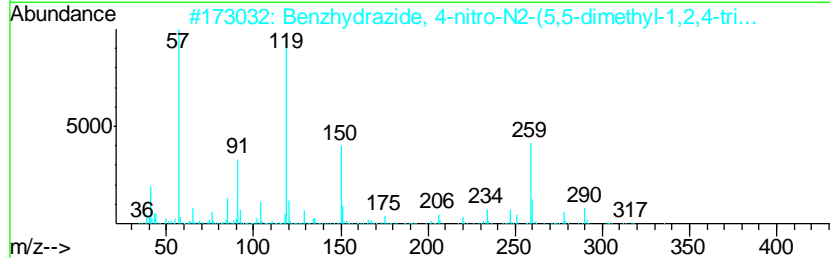
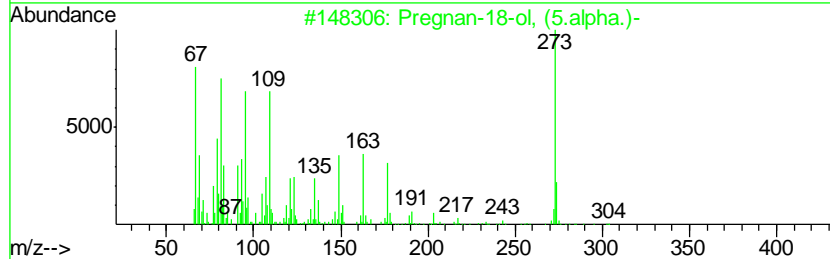
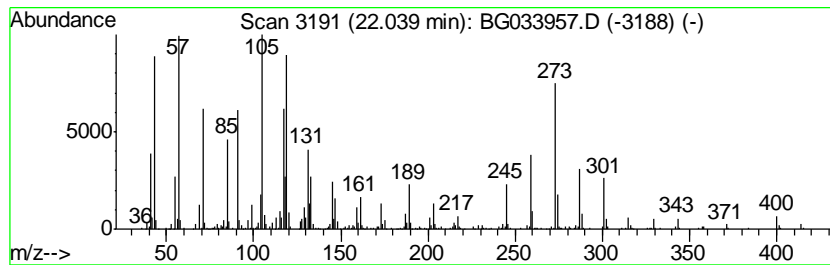
TIC Library : C:\Database\NIST11.L  
 TIC Integration Parameters: LSCINT.P

\*\*\*\*\*  
 Peak Number 12 Pregnan-18-ol, (5.alpha.)- Concentration Rank 7

R.T.	EstConc	Area	Relative to ISTD	R.T.
22.04	9.80 ng	1053030	Chrysene-d12	21.46

Hit#	of	Tentative ID	MW	MolForm	CAS#	Qual
1	5	Pregnan-18-ol, (5.alpha.)-	304	C21H36O	056053-09-9	90
2		Benzhydrazide, 4-nitro-N2-(5,5-d...	335	C15H17N3O6	1000263-98-3	14
3		Isophthalic acid, di(2-chloro-5-...	414	C22H16Cl2O4	1000356-57-3	11
4		Benzene, 2-(1-decylundecyl)-1,4-...	400	C29H52	055373-91-6	11
5		2-Naphthalen-2-yl-isoindole-1,3-...	273	C18H11NO2	1000310-57-1	11



Data Path : Z:\HPCHEM1\BNA G\DATA\BG042418\  
 Data File : BG033957.D  
 Acq On : 24 Apr 2018 16:54  
 Operator : SJ/JU  
 Sample : J2475-01  
 Misc :  
 ALS Vial : 8 Sample Multiplier: 1

Instrument :  
 BNA\_G  
 ClientSampled :  
 MW-01

Quant Method : Z:\HPCHEM1\BNA G\METHODS\8270-BG041918.M  
 Quant Title : ASP BNA STANDARDS FOR 5 POINT CALIBRATION

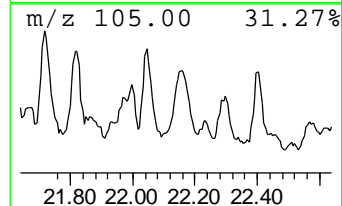
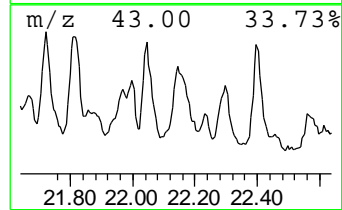
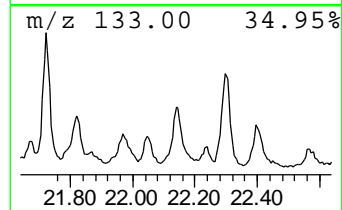
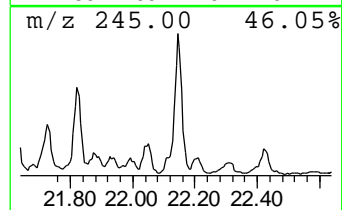
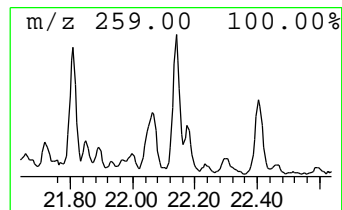
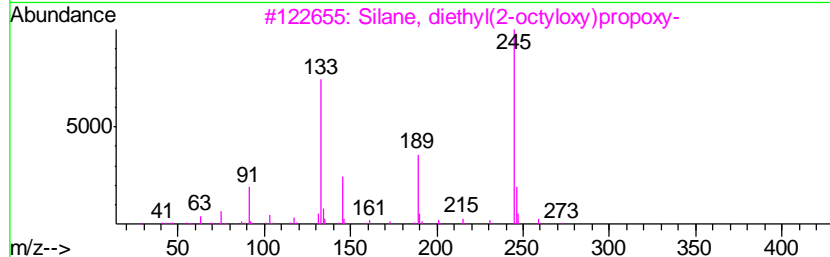
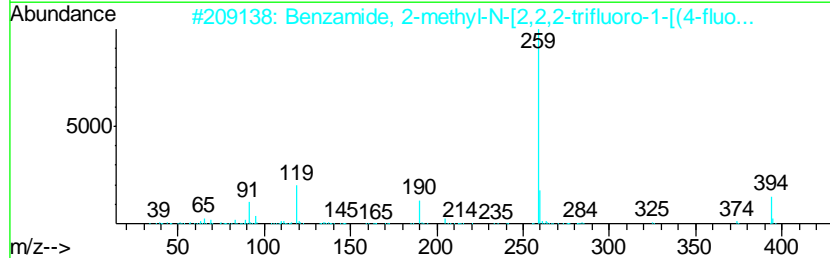
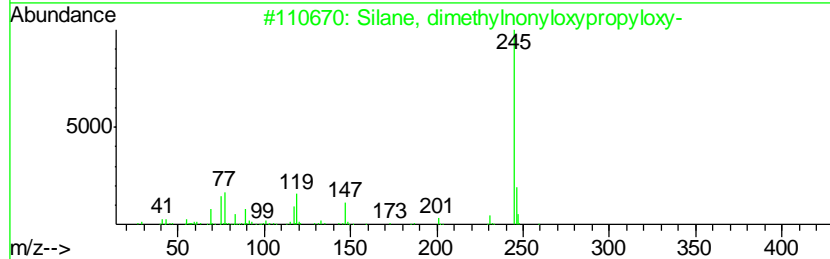
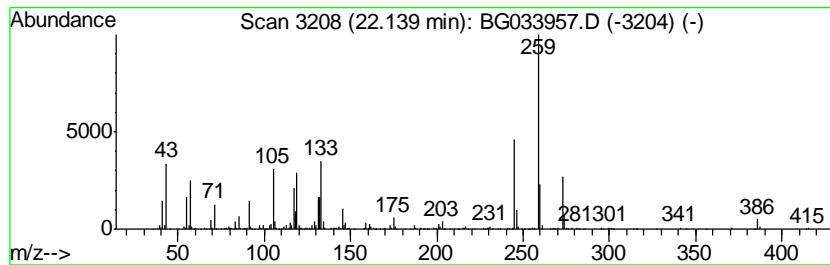
TIC Library : C:\Database\NIST11.L  
 TIC Integration Parameters: LSCINT.P

\*\*\*\*\*  
 Peak Number 13 unknown22.14 Concentration Rank 4

R.T.	EstConc	Area	Relative to ISTD	R.T.
22.14	11.41 ng	1226120	Chrysene-d12	21.46

Hit#	of	Tentative ID	MW	MolForm	CAS#	Qual
1	5	Silane, dimethylnonyloxypropyloxy-	260	C14H32O2Si	1000356-04-5	22
2		Benzamide, 2-methyl-N-[2,2,2-tri...	394	C17H13F7N2O	1000362-45-7	22
3		Silane, diethyl(2-octyloxy)propoxy-	274	C15H34O2Si	1000363-00-9	22
4		1H-Cyclopenta[a]phenanthrene, 17...	414	C30H54	000474-20-4	18
5		Pyrimidine-2,4,6(1H,3H,5H)-trion...	274	C13H14N4O3	346612-04-2	14





Data Path : Z:\HPCHEM1\BNA G\DATA\BG042418\  
 Data File : BG033957.D  
 Acq On : 24 Apr 2018 16:54  
 Operator : SJ/JU  
 Sample : J2475-01  
 Misc :  
 ALS Vial : 8 Sample Multiplier: 1

Instrument :  
 BNA\_G  
 ClientSampled :  
 MW-01

Quant Method : Z:\HPCHEM1\BNA G\METHODS\8270-BG041918.M  
 Quant Title : ASP BNA STANDARDS FOR 5 POINT CALIBRATION

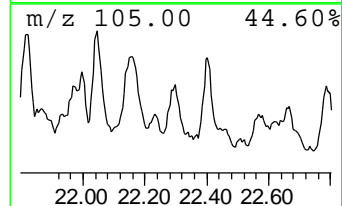
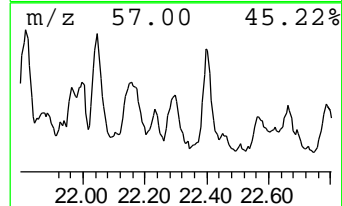
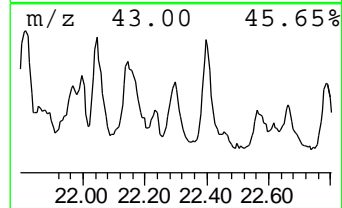
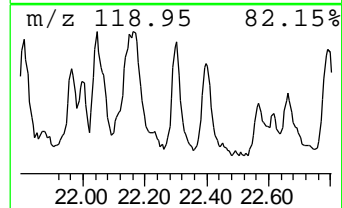
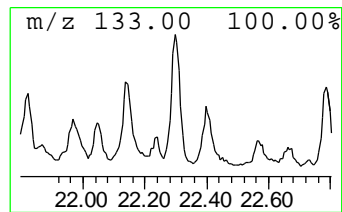
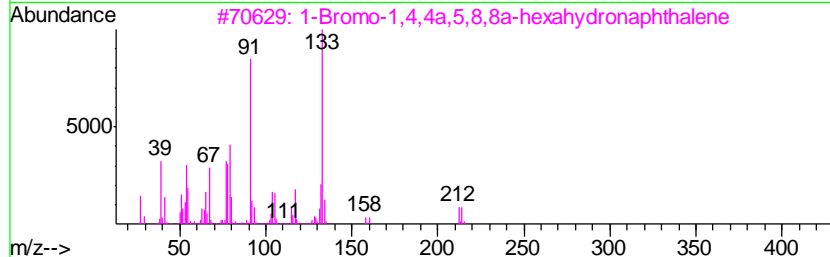
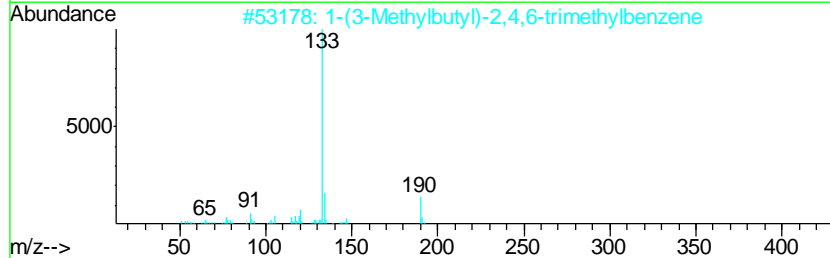
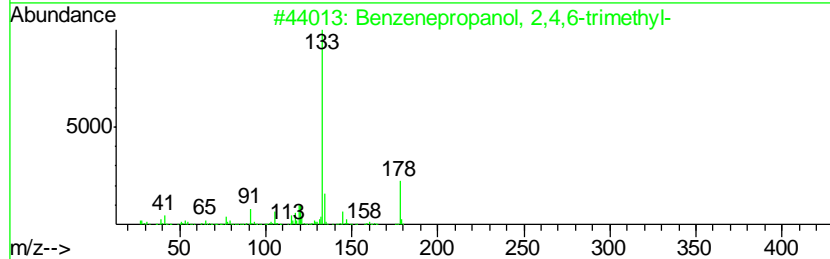
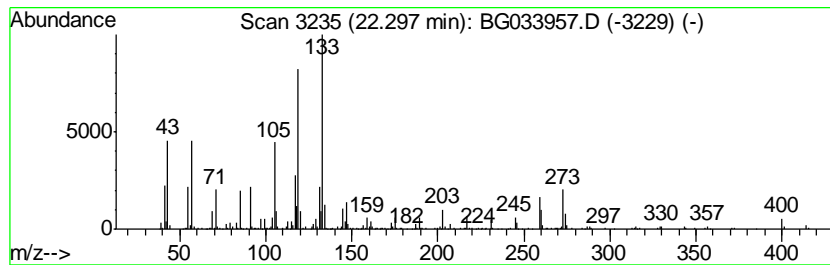
TIC Library : C:\Database\NIST11.L  
 TIC Integration Parameters: LSCINT.P

\*\*\*\*\*  
 Peak Number 14 unknown22.30 Concentration Rank 11

R.T.	EstConc	Area	Relative to ISTD	R.T.
22.30	7.83 ng	840947	Chrysene-d12	21.46

Hit#	of	Tentative ID	MW	MolForm	CAS#	Qual
1	5	Benzenepropanol, 2,4,6-trimethyl-	178	C12H18O	027645-07-4	35
2		1-(3-Methylbutyl)-2,4,6-trimethy...	190	C14H22	016204-65-2	35
3		1-Bromo-1,4,4a,5,8,8a-hexahydron...	212	C10H13Br	1000192-97-4	22
4		m-Toluic acid, 4-methoxyphenyl e...	242	C15H14O3	1000307-56-8	18
5		Benzene, (1,1-dimethyldecyl)-	246	C18H30	027854-40-6	18



Data Path : Z:\HPCHEM1\BNA G\DATA\BG042418\  
 Data File : BG033957.D  
 Acq On : 24 Apr 2018 16:54  
 Operator : SJ/JU  
 Sample : J2475-01  
 Misc :  
 ALS Vial : 8 Sample Multiplier: 1

Instrument :  
 BNA\_G  
 ClientSampled :  
 MW-01

Quant Method : Z:\HPCHEM1\BNA G\METHODS\8270-BG041918.M  
 Quant Title : ASP BNA STANDARDS FOR 5 POINT CALIBRATION

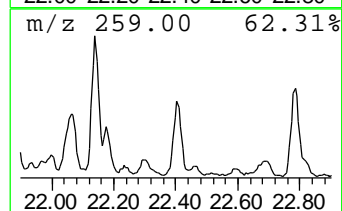
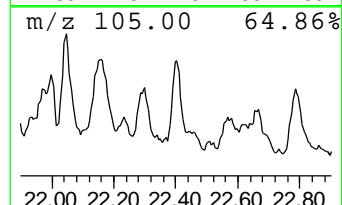
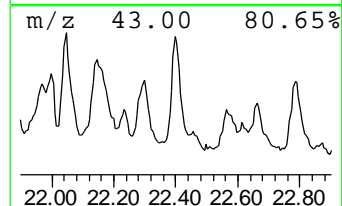
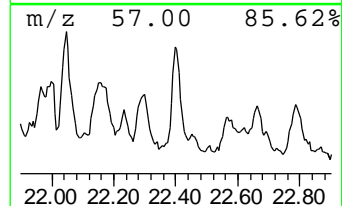
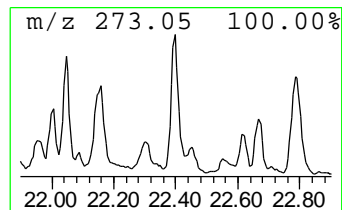
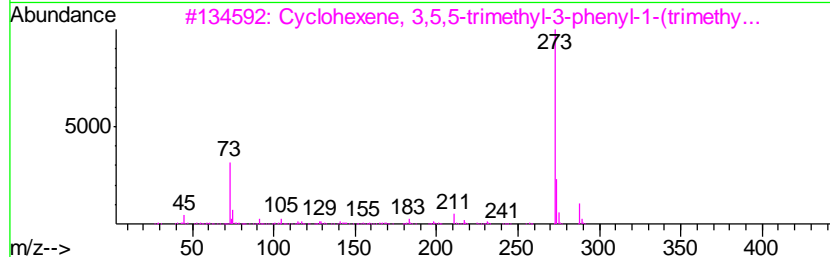
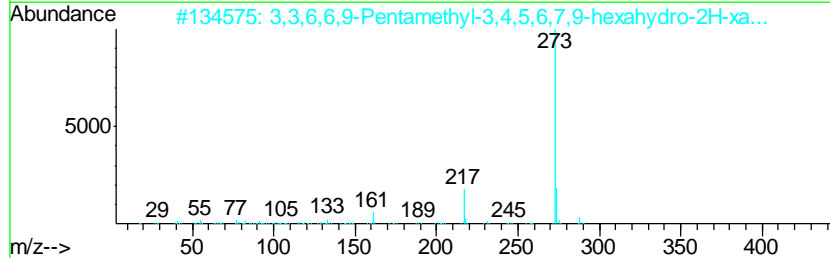
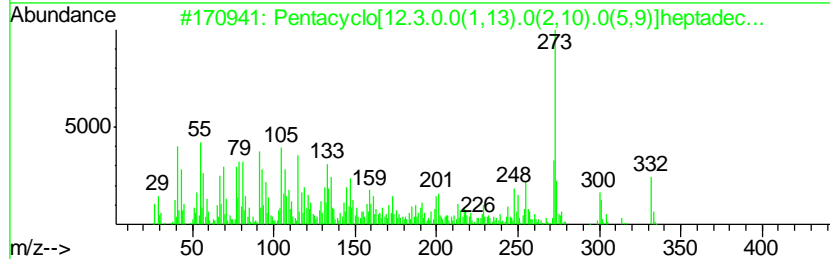
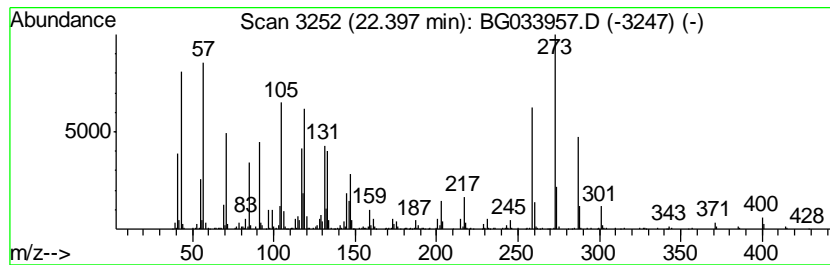
TIC Library : C:\Database\NIST11.L  
 TIC Integration Parameters: LSCINT.P

\*\*\*\*\*  
 Peak Number 15 unknown22.40 Concentration Rank 8

R.T.	EstConc	Area	Relative to ISTD	R.T.
22.40	9.77 ng	1049350	Chrysene-d12	21.46

Hit#	of	Tentative ID	MW	MolForm	CAS#	Qual
1	5	Pentacyclo[12.3.0.0(1,13).0(2,10)...	332	C20H28O4	1000192-08-1	25
2		3,3,6,6,9-Pentamethyl-3,4,5,6,7,...	288	C18H24O3	019225-63-9	14
3		Cyclohexene, 3,5,5-trimethyl-3-p...	288	C18H28OSi	172468-18-7	14
4		Pyrimidine-2,4,6(1H,3H,5H)-trion...	273	C14H15N3O3	346612-10-0	11
5		Cobaltocene, 1,1'-diacetyl-	273	C14H14CoO2	073249-54-4	11



Data Path : Z:\HPCHEM1\BNA G\DATA\BG042418\  
 Data File : BG033957.D  
 Acq On : 24 Apr 2018 16:54  
 Operator : SJ/JU  
 Sample : J2475-01  
 Misc :  
 ALS Vial : 8 Sample Multiplier: 1

Instrument :  
 BNA\_G  
 ClientSampled :  
 MW-01

Quant Method : Z:\HPCHEM1\BNA G\METHODS\8270-BG041918.M  
 Quant Title : ASP BNA STANDARDS FOR 5 POINT CALIBRATION

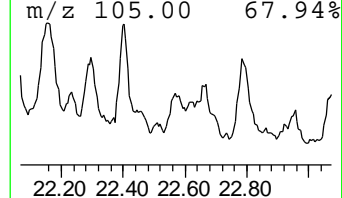
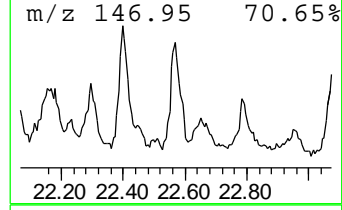
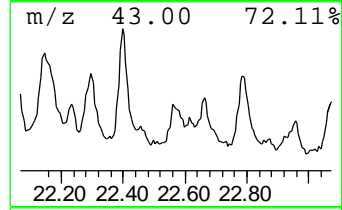
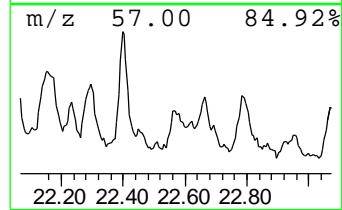
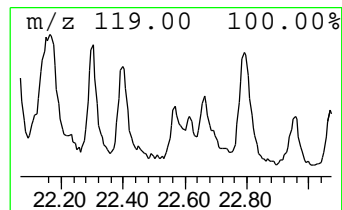
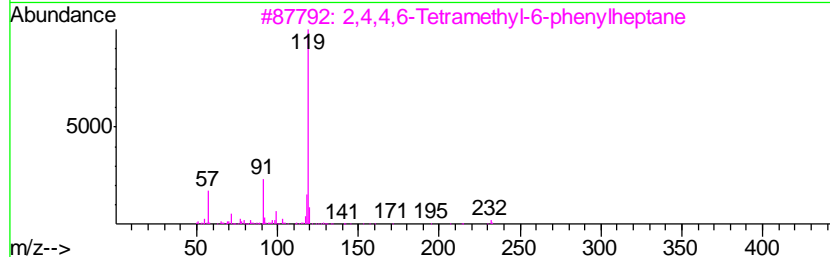
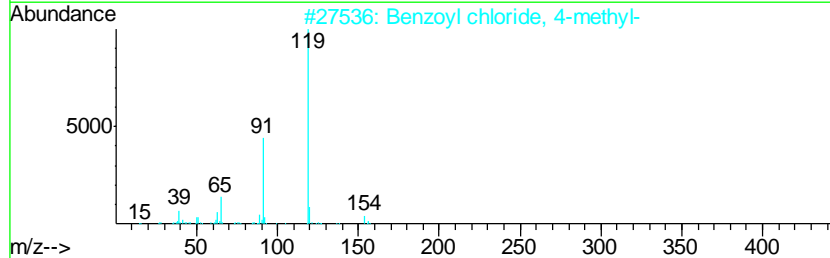
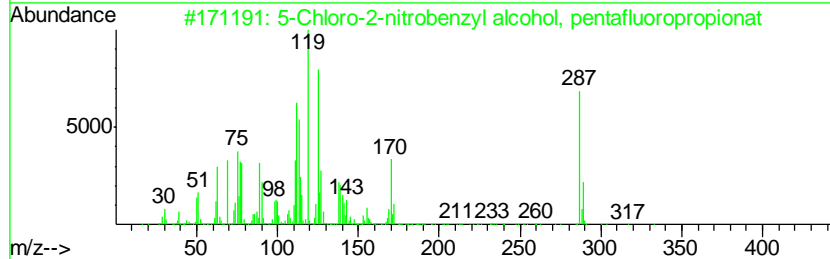
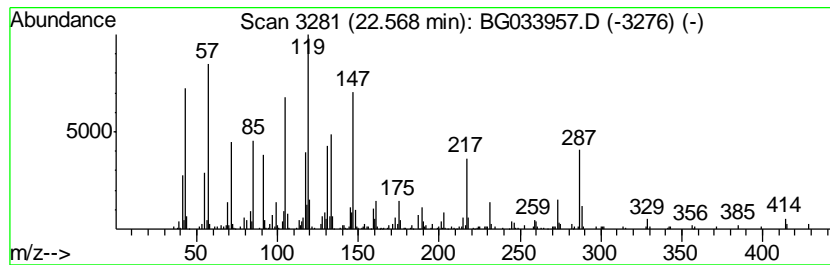
TIC Library : C:\Database\NIST11.L  
 TIC Integration Parameters: LSCINT.P

\*\*\*\*\*  
 Peak Number 16 5-Chloro-2-nitrobenzyl alco... Concentration Rank 19

R.T.	EstConc	Area	Relative to ISTD	R.T.
22.57	4.26 ng	457650	Chrysene-d12	21.46

Hit#	of	Tentative ID	MW	MolForm	CAS#	Qual
1	5	5-Chloro-2-nitrobenzyl alcohol, ...	333	C10H5ClF5NO4	1000364-26-3	56
2		Benzoyl chloride, 4-methyl-	154	C8H7ClO	000874-60-2	11
3		2,4,4,6-Tetramethyl-6-phenylheptane	232	C17H28	1000293-28-6	11
4		2-Methylbenzoic acid, 2-biphenyl...	288	C20H16O2	1000331-28-5	11
5		Benzene, (1,1-dimethylpropyl)-	148	C11H16	002049-95-8	11



Data Path : Z:\HPCHEM1\BNA G\DATA\BG042418\  
 Data File : BG033957.D  
 Acq On : 24 Apr 2018 16:54  
 Operator : SJ/JU  
 Sample : J2475-01  
 Misc :  
 ALS Vial : 8 Sample Multiplier: 1

Instrument :  
 BNA\_G  
 ClientSampled :  
 MW-01

Quant Method : Z:\HPCHEM1\BNA G\METHODS\8270-BG041918.M  
 Quant Title : ASP BNA STANDARDS FOR 5 POINT CALIBRATION

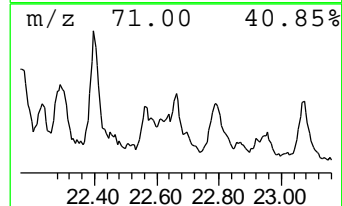
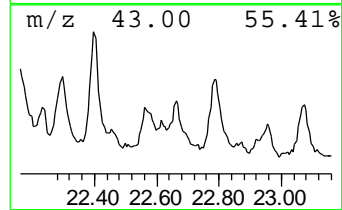
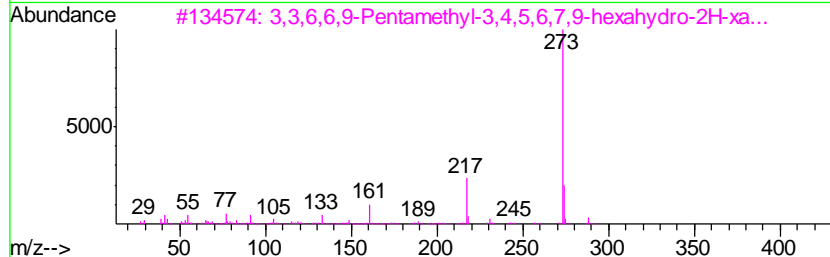
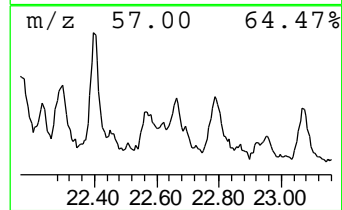
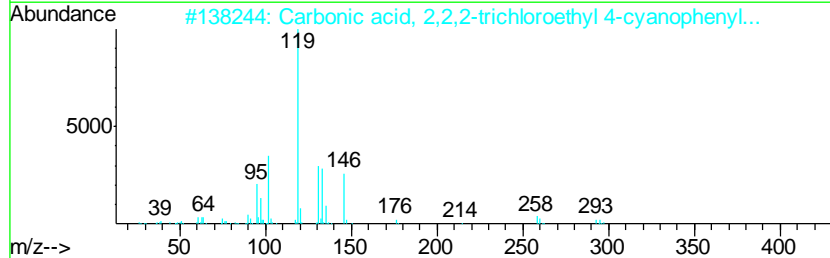
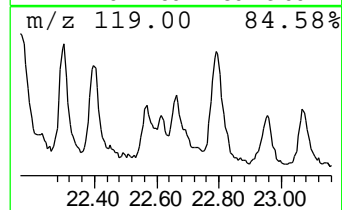
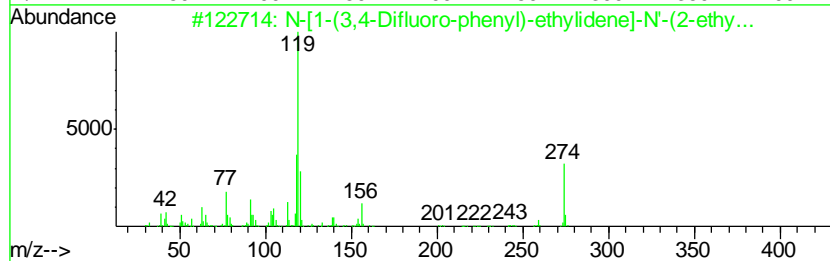
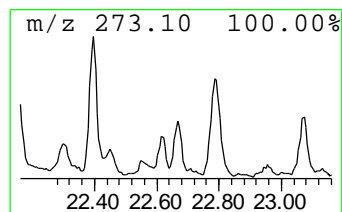
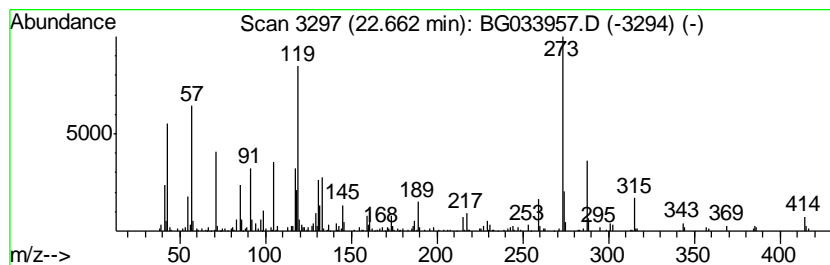
TIC Library : C:\Database\NIST11.L  
 TIC Integration Parameters: LSCINT.P

\*\*\*\*\*  
 Peak Number 17 unknown22.66 Concentration Rank 17

R.T.	EstConc	Area	Relative to ISTD	R.T.
22.66	4.59 ng	493032	Chrysene-d12	21.46

Hit#	of	Tentative ID	MW	MolForm	CAS#	Qual
1	5	N-[1-(3,4-Difluoro-phenyl)-ethyl]...	274	C16H16F2N2	1000286-18-0	30
2		Carbonic acid, 2,2,2-trichloroet...	293	C10H6Cl3NO3	1000357-90-3	30
3		3,3,6,6,9-Pentamethyl-3,4,5,6,7,...	288	C18H24O3	019225-63-9	25
4		Octahydroxanthen-1,9-dione, 3,3,...	358	C23H34O3	071827-88-8	25
5		Pyrazolo[1,5-a]pyrimidine, 6,7-d...	273	C18H15N3	186956-30-9	22



Data Path : Z:\HPCHEM1\BNA G\DATA\BG042418\  
 Data File : BG033957.D  
 Acq On : 24 Apr 2018 16:54  
 Operator : SJ/JU  
 Sample : J2475-01  
 Misc :  
 ALS Vial : 8 Sample Multiplier: 1

Instrument :  
 BNA\_G  
 ClientSampled :  
 MW-01

Quant Method : Z:\HPCHEM1\BNA G\METHODS\8270-BG041918.M  
 Quant Title : ASP BNA STANDARDS FOR 5 POINT CALIBRATION

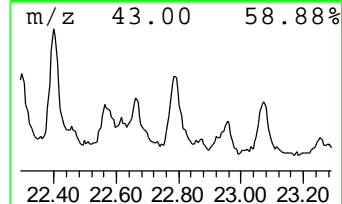
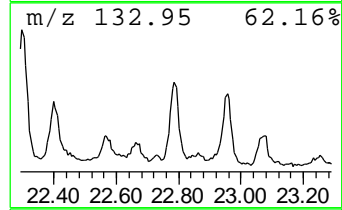
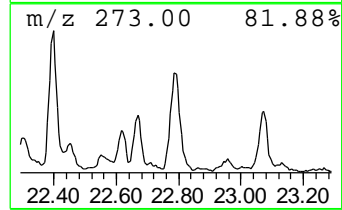
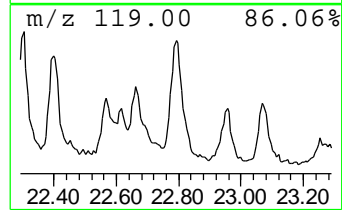
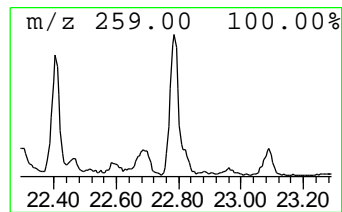
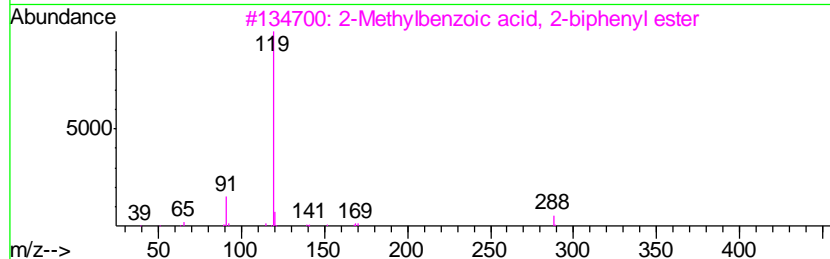
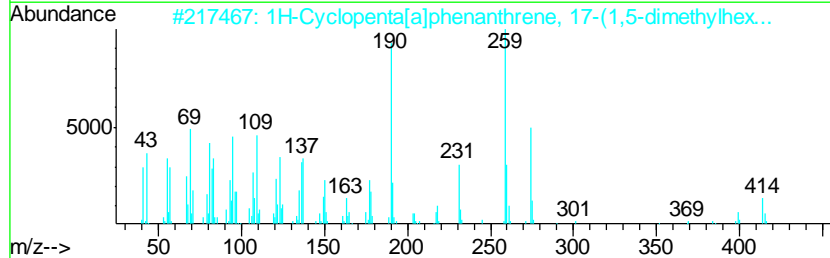
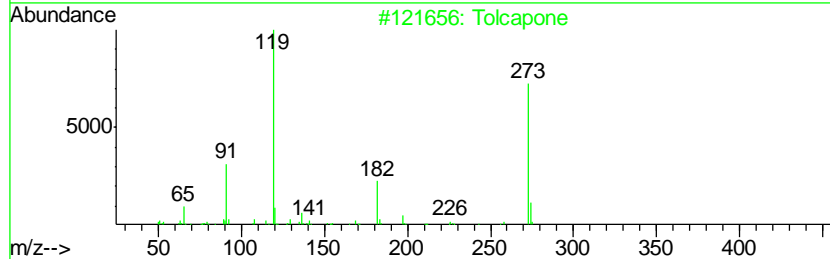
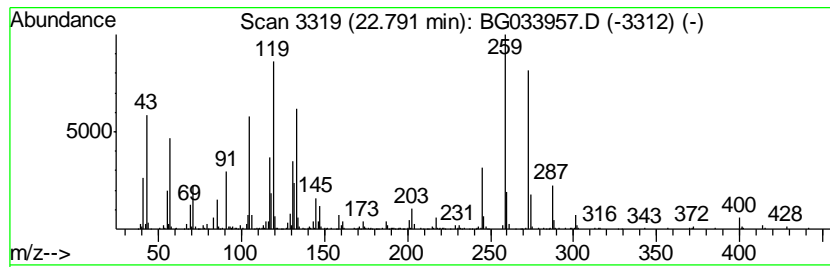
TIC Library : C:\Database\NIST11.L  
 TIC Integration Parameters: LSCINT.P

\*\*\*\*\*  
 Peak Number 18 unknown22.79 Concentration Rank 9

R.T.	EstConc	Area	Relative to ISTD	R.T.
22.79	8.80 ng	945508	Chrysene-d12	21.46

Hit#	of	Tentative ID	MW	MolForm	CAS#	Qual
1	5	Tolcapone	273	C14H11NO5	134308-13-7	38
2		1H-Cyclopenta[a]phenanthrene, 17...	414	C30H54	000474-20-4	11
3		2-Methylbenzoic acid, 2-biphenyl...	288	C20H16O2	1000331-28-5	11
4		Pyrazolo[1,5-a]pyrimidine, 6,7-d...	273	C18H15N3	186956-30-9	10
5		2-Methylbenzoic acid, 4-chloro-2...	260	C15H13ClO2	1000331-28-1	10



Data Path : Z:\HPCHEM1\BNA G\DATA\BG042418\  
 Data File : BG033957.D  
 Acq On : 24 Apr 2018 16:54  
 Operator : SJ/JU  
 Sample : J2475-01  
 Misc :  
 ALS Vial : 8 Sample Multiplier: 1

Instrument :  
 BNA\_G  
 ClientSampled :  
 MW-01

Quant Method : Z:\HPCHEM1\BNA G\METHODS\8270-BG041918.M  
 Quant Title : ASP BNA STANDARDS FOR 5 POINT CALIBRATION

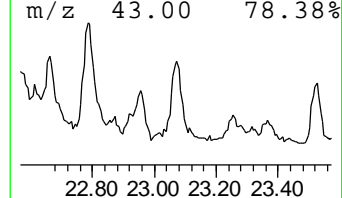
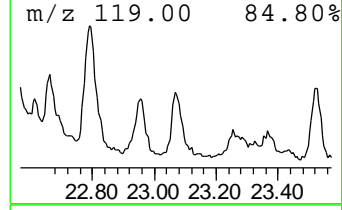
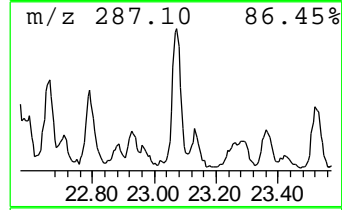
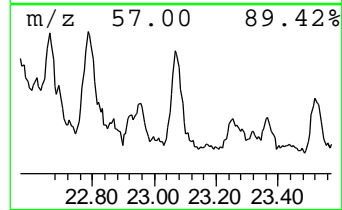
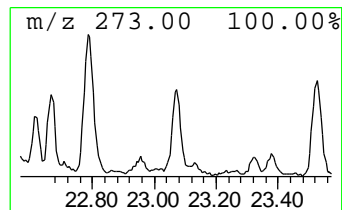
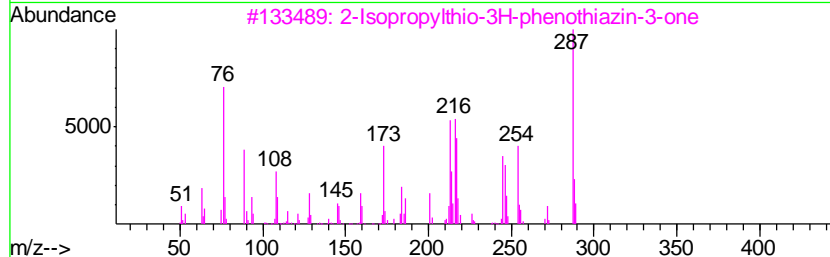
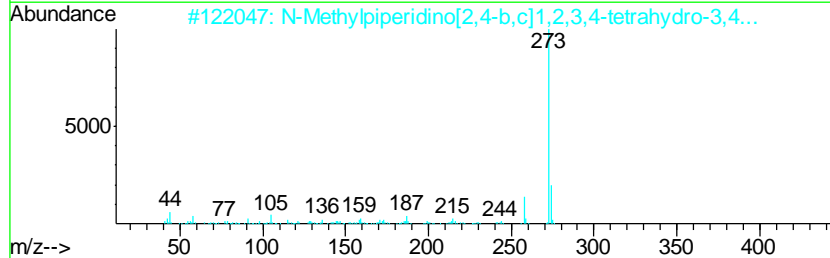
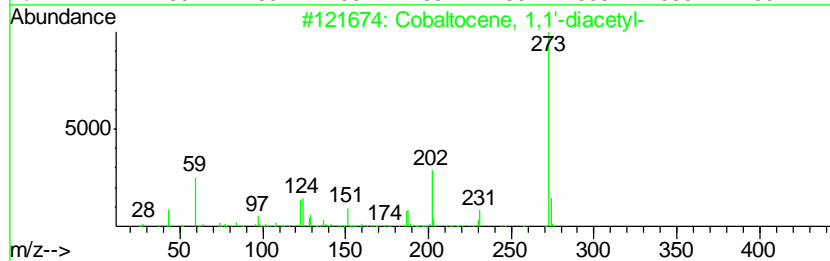
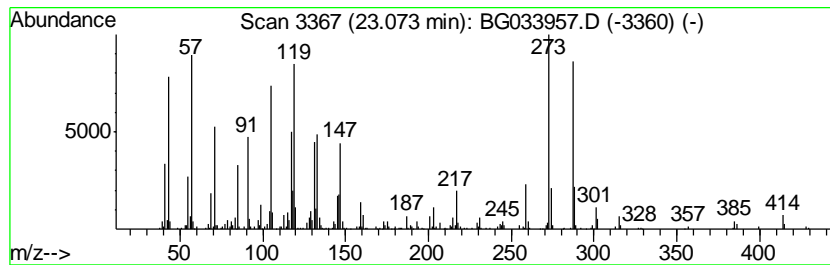
TIC Library : C:\Database\NIST11.L  
 TIC Integration Parameters: LSCINT.P

\*\*\*\*\*  
 Peak Number 19 unknown23.07 Concentration Rank 10

R.T.	EstConc	Area	Relative to ISTD	R.T.
23.07	8.11 ng	596974	Perylene-d12	24.52

Hit#	of	Tentative ID	MW	MolForm	CAS#	Qual
1	5	Cobaltocene, 1,1'-diacetyl-	273	C14H14CoO2	073249-54-4	15
2		N-Methylpiperidino[2,4-b,c]1,2,3...	273	C18H27NO	1000128-54-7	11
3		2-Isopropylthio-3H-phenothiazin-...	287	C15H13NOS2	090712-90-6	11
4		Benzimidazo[1,2-b]indolo[2,3-E]1...	287	C17H13N5	1000263-77-9	11
5		2,5-Dimethyl-4-(3,4-dinitropheny...	273	C13H11N3O4	059195-25-4	10



Data Path : Z:\HPCHEM1\BNA G\DATA\BG042418\  
 Data File : BG033957.D  
 Acq On : 24 Apr 2018 16:54  
 Operator : SJ/JU  
 Sample : J2475-01  
 Misc :  
 ALS Vial : 8 Sample Multiplier: 1

Instrument :  
 BNA\_G  
 ClientSampleId :  
 MW-01

Quant Method : Z:\HPCHEM1\BNA G\METHODS\8270-BG041918.M  
 Quant Title : ASP BNA STANDARDS FOR 5 POINT CALIBRATION

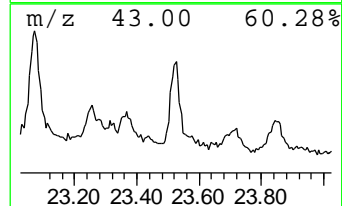
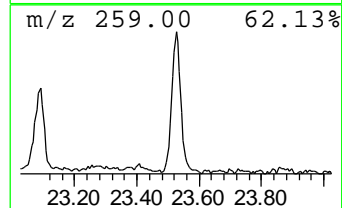
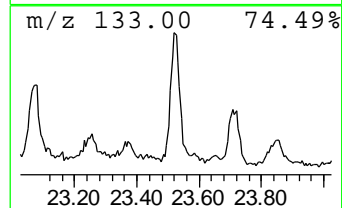
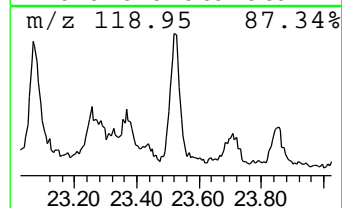
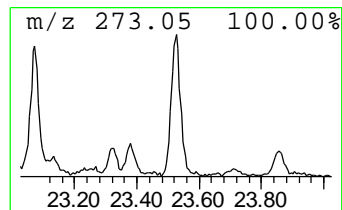
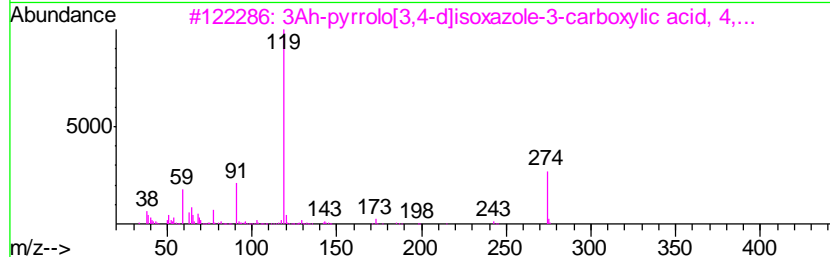
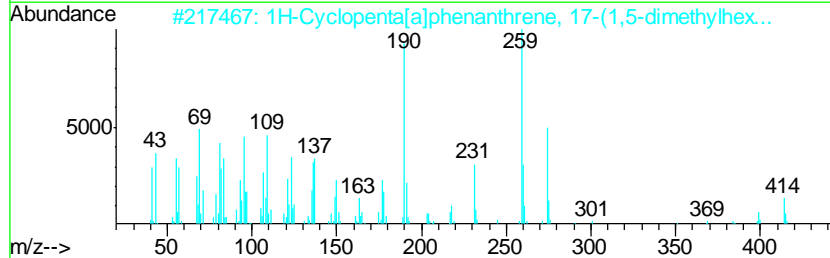
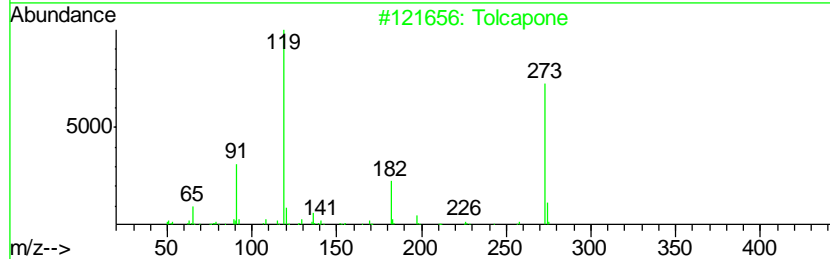
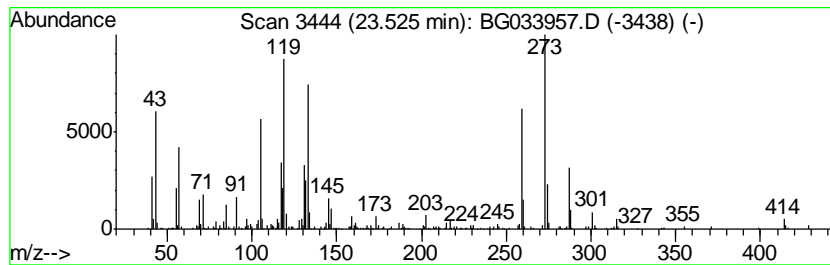
TIC Library : C:\Database\NIST11.L  
 TIC Integration Parameters: LSCINT.P

\*\*\*\*\*  
 Peak Number 20 Tolcapone Concentration Rank 14

R.T.	EstConc	Area	Relative to ISTD	R.T.
23.53	6.00 ng	442202	Perylene-d12	24.52

Hit#	of	Tentative ID	MW	MolForm	CAS#	Qual
1	5	Tolcapone	273	C14H11NO5	134308-13-7	35
2		1H-Cyclopenta[a]phenanthrene, 17...	414	C30H54	000474-20-4	25
3		3Ah-pyrrolo[3,4-d]isoxazole-3-ca...	274	C13H10N2O5	1000317-17-8	15
4		Cobaltocene, 1,1'-diacetyl-	273	C14H14CoO2	073249-54-4	11
5		Phosphine, bis(dimethylamino)men...	258	C14H31N2P	1000150-77-6	11



Data Path : Z:\HPCHEM1\BNA\_G\DATA\BG042418\  
 Data File : BG033957.D  
 Acq On : 24 Apr 2018 16:54  
 Operator : SJ/JU  
 Sample : J2475-01  
 Misc :  
 ALS Vial : 8 Sample Multiplier: 1

Instrument :  
 BNA\_G  
 ClientSampleId :  
 MW-01

Quant Method : Z:\HPCHEM1\BNA\_G\METHODS\8270-BG041918.M  
 Quant Title : ASP BNA STANDARDS FOR 5 POINT CALIBRATION

TIC Library : C:\Database\NIST11.L  
 TIC Integration Parameters: LSCINT.P

TIC Top Hit name	RT	EstConc	Units	Response	--Internal Standard--			
					#	RT	Resp	Conc
unknown7.36	7.36	97.8	ng	2614570	1	7.83	534724	20.0
Benzene, (1-methy...	17.13	5.9	ng	411082	4	17.21	1402880	20.0
Benzene, (1-methy...	17.90	13.6	ng	952285	4	17.21	1402880	20.0
unknown20.92	20.92	3.9	ng	422795	5	21.46	2148760	20.0
unknown21.00	21.00	4.8	ng	517725	5	21.46	2148760	20.0
unknown21.10	21.10	6.0	ng	645232	5	21.46	2148760	20.0
unknown21.20	21.20	7.1	ng	763973	5	21.46	2148760	20.0
unknown21.30	21.30	4.3	ng	463462	5	21.46	2148760	20.0
unknown21.72	21.72	10.8	ng	1164430	5	21.46	2148760	20.0
unknown21.82	21.82	11.2	ng	1197920	5	21.46	2148760	20.0
Pregnan-18-ol, (5...	22.04	9.8	ng	1053030	5	21.46	2148760	20.0
unknown22.14	22.14	11.4	ng	1226120	5	21.46	2148760	20.0
unknown22.30	22.30	7.8	ng	840947	5	21.46	2148760	20.0
unknown22.40	22.40	9.8	ng	1049350	5	21.46	2148760	20.0
5-Chloro-2-nitrob...	22.57	4.3	ng	457650	5	21.46	2148760	20.0
unknown22.66	22.66	4.6	ng	493032	5	21.46	2148760	20.0
unknown22.79	22.79	8.8	ng	945508	5	21.46	2148760	20.0
unknown23.07	23.07	8.1	ng	596974	6	24.52	1472940	20.0
Tolcapone	23.53	6.0	ng	442202	6	24.52	1472940	20.0