

Data Path : Z:\SVOASRV\HPCHEM1\BNA G\DATA\BG042619\
 Data File : BG040645.D
 Acq On : 27 Apr 2019 2:17
 Operator : JU/SJ
 Sample : K2203-18
 Misc :
 ALS Vial : 22 Sample Multiplier: 1

Instrument :
 BNA_G
 ClientSampleId :
 SU-03-042419-A

Quant Time: Apr 27 04:41:13 2019
 Quant Method : Z:\SVOASRV\HPCHEM1\BNA G\METHODS\8270-BG042319.M
 Quant Title : ASP BNA STANDARDS FOR 5 POINT CALIBRATION
 QLast Update : Wed Apr 24 05:35:33 2019
 Response via : Initial Calibration

| Internal Standards | R.T. | QIon | Response | Conc | Units | Dev(Min) |
|---------------------------|-------|------|----------|-------|-------|----------|
| 1) 1,4-Dichlorobenzene-d4 | 8.16 | 152 | 42188 | 20.00 | ng | 0.00 |
| 21) Naphthalene-d8 | 10.98 | 136 | 165997 | 20.00 | ng | 0.00 |
| 39) Acenaphthene-d10 | 14.78 | 164 | 123045 | 20.00 | ng | -0.01 |
| 64) Phenanthrene-d10 | 17.53 | 188 | 332171 | 20.00 | ng | 0.00 |
| 76) Chrysene-d12 | 21.81 | 240 | 355295 | 20.00 | ng | -0.01 |
| 87) Perylene-d12 | 25.19 | 264 | 366739 | 20.00 | ng | -0.02 |

System Monitoring Compounds

| | | | | | | |
|--------------------------|-------|-----|---------|--------|----|------|
| 5) 2-Fluorophenol | 5.68 | 112 | 320506 | 133.92 | ng | 0.00 |
| 7) Phenol-d6 | 7.29 | 99 | 412945 | 112.06 | ng | 0.00 |
| 23) Nitrobenzene-d5 | 9.33 | 82 | 391555 | 108.99 | ng | 0.00 |
| 42) 2,4,6-Tribromophenol | 16.27 | 330 | 274355 | 162.22 | ng | 0.00 |
| 45) 2-Fluorobiphenyl | 13.41 | 172 | 813496 | 95.48 | ng | 0.00 |
| 79) Terphenyl-d14 | 20.13 | 244 | 1700853 | 106.06 | ng | 0.00 |

Target Compounds

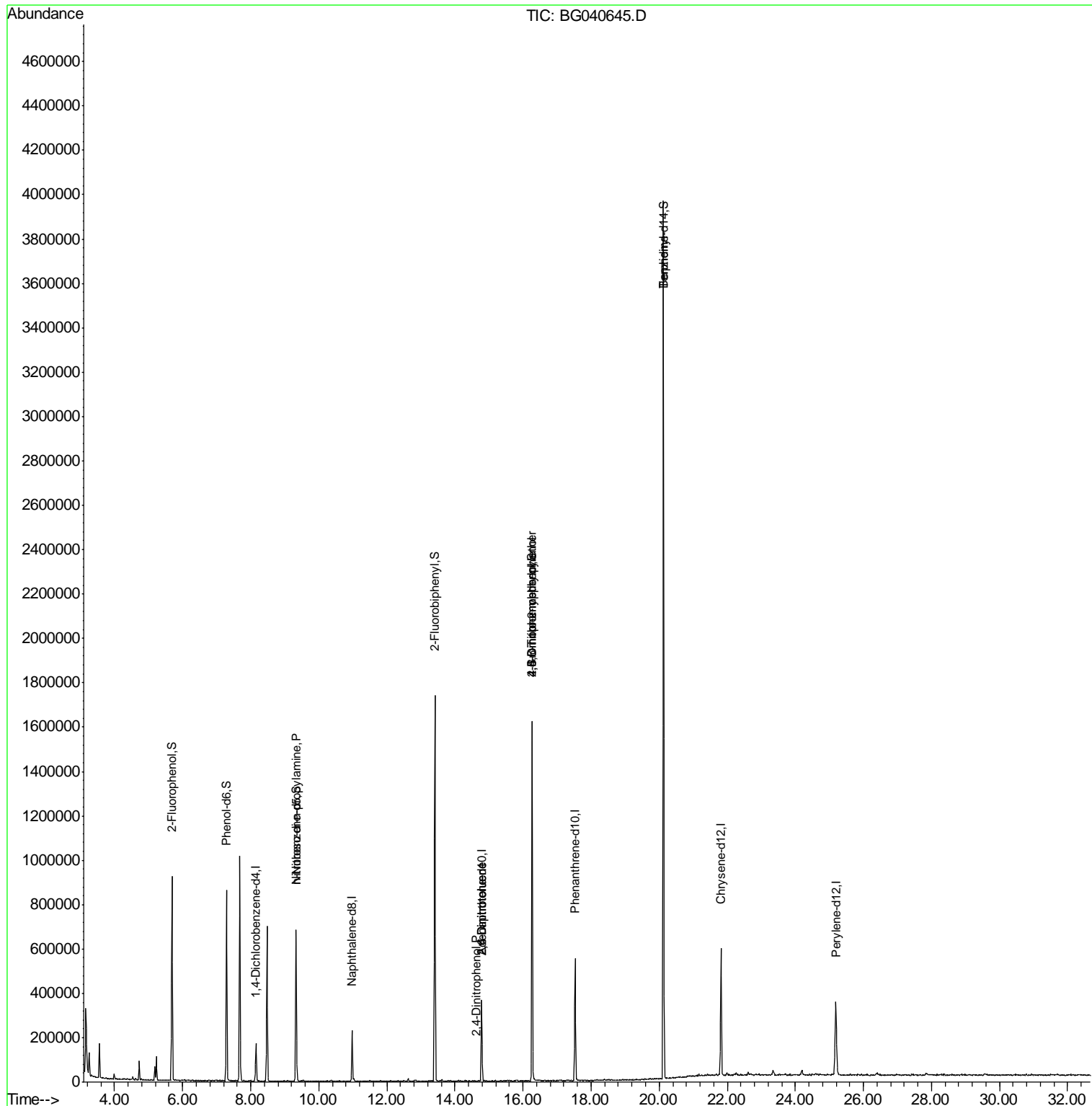
| | | | | | Qvalue | |
|--------------------------------|-------|-----|-------|-----------|--------|----|
| 9) Benzaldehyde | 7.29 | 77 | 1248 | Below Cal | # | 6 |
| 19) n-Nitroso-di-n-propylamine | 9.33 | 70 | 57879 | 17.448 ng | # | 78 |
| 51) 2,6-Dinitrotoluene | 14.78 | 165 | 16113 | 8.019 ng | # | 14 |
| 54) 2,4-Dinitrophenol | 14.62 | 184 | 60 | 7.063 ng | # | 21 |
| 57) 2,4-Dinitrotoluene | 14.78 | 165 | 16113 | 5.902 ng | # | 16 |
| 65) 4,6-Dinitro-2-methylphenol | 16.27 | 198 | 1073 | 7.660 ng | # | 78 |
| 67) 4-Bromophenyl-phenylether | 16.27 | 248 | 20341 | 4.915 ng | # | 1 |
| 77) Benzidine | 20.13 | 184 | 34308 | 3.527 ng | # | 94 |

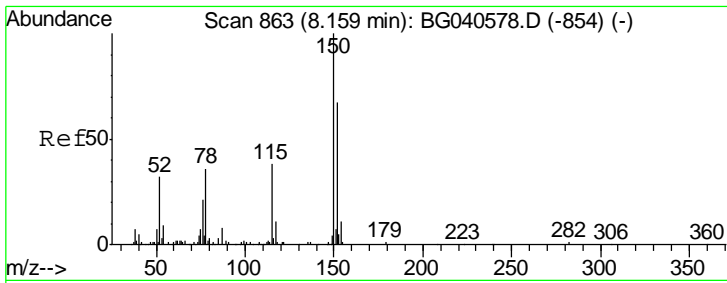
(#) = qualifier out of range (m) = manual integration (+) = signals summed

Data Path : Z:\SVOASRV\HPCHEM1\BNA G\DATA\BG042619\
 Data File : BG040645.D
 Acq On : 27 Apr 2019 2:17
 Operator : JU/SJ
 Sample : K2203-18
 Misc :
 ALS Vial : 22 Sample Multiplier: 1

Instrument :
 BNA_G
 ClientSampleID :
 SU-03-042419-A

Quant Time: Apr 27 04:41:13 2019
 Quant Method : Z:\SVOASRV\HPCHEM1\BNA G\METHODS\8270-BG042319.M
 Quant Title : ASP BNA STANDARDS FOR 5 POINT CALIBRATION
 QLast Update : Wed Apr 24 05:35:33 2019
 Response via : Initial Calibration

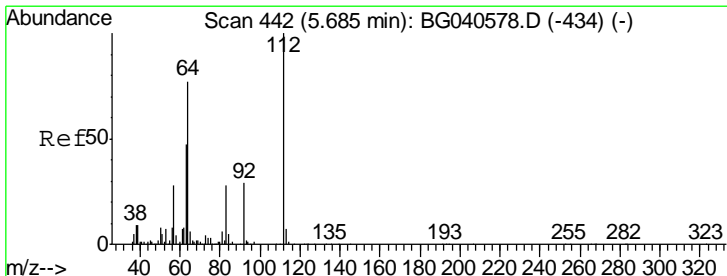
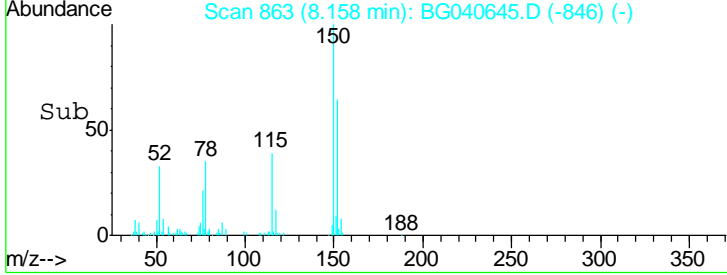
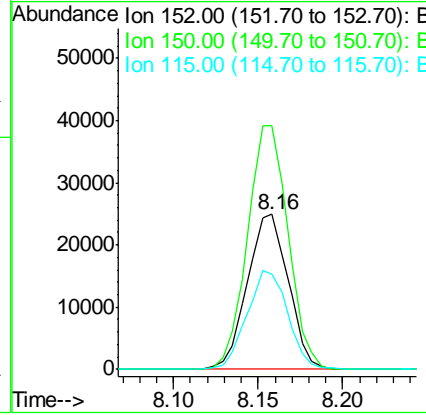
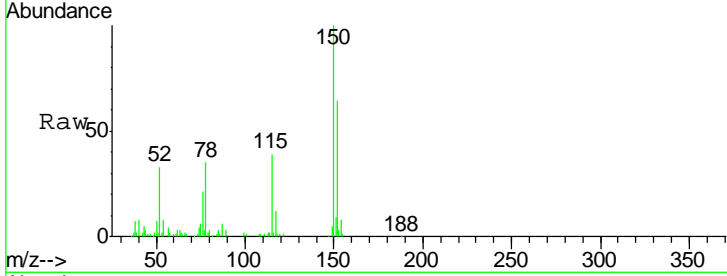




#1
 1,4-Dichlorobenzene-d4
 Concen: 20.000 ng
 RT: 8.16 min Scan# 863
 Delta R.T. -0.00 min
 Lab File: BG040645.D
 Acq: 27 Apr 2019 2:17

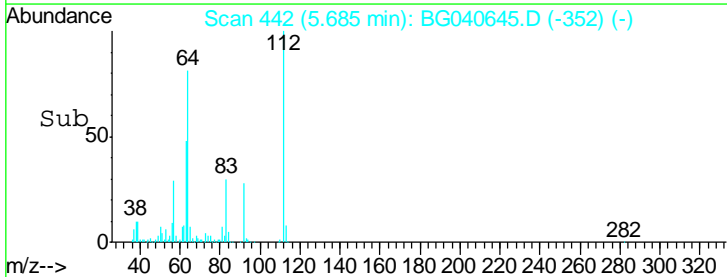
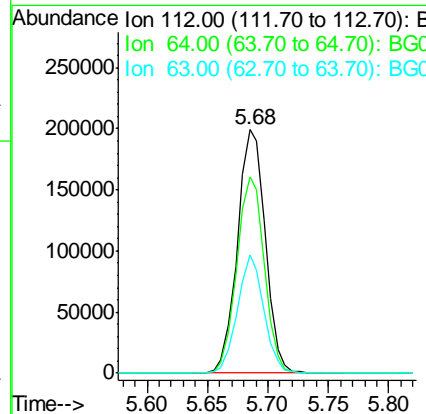
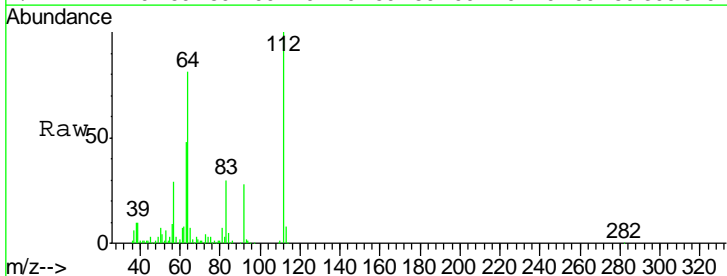
Instrument :
 BNA_G
 ClientSampled :
 SU-03-042419-A

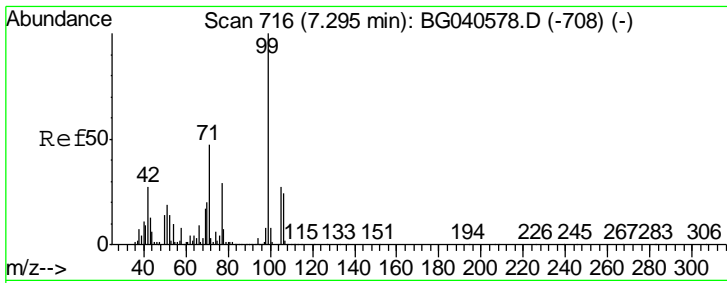
| Tgt Ion | Resp | Lower | Upper |
|---------|-------|-------|-------|
| 152 | 42188 | | |
| 150 | 157.2 | 120.2 | 180.2 |
| 115 | 61.7 | 46.2 | 69.2 |



#5
 2-Fluorophenol
 Concen: 133.919 ng
 RT: 5.68 min Scan# 442
 Delta R.T. 0.00 min
 Lab File: BG040645.D
 Acq: 27 Apr 2019 2:17

| Tgt Ion | Resp | Lower | Upper |
|---------|--------|-------|-------|
| 112 | 320506 | | |
| 64 | 80.8 | 61.4 | 92.0 |
| 63 | 48.3 | 37.8 | 56.6 |

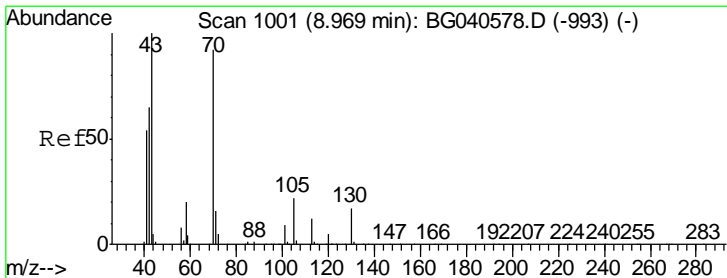
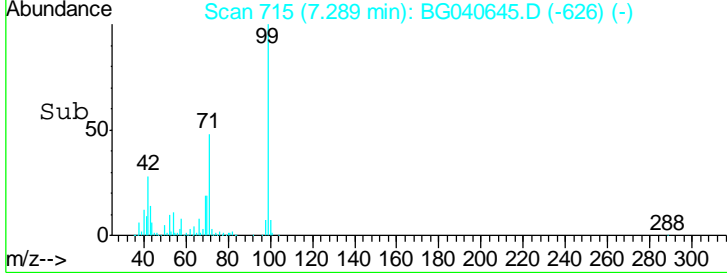
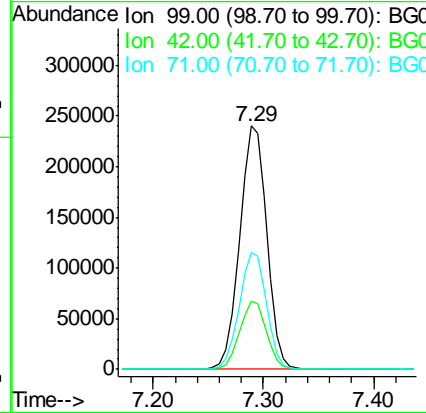
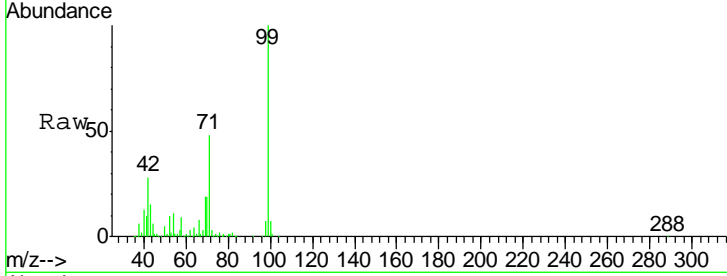




#7
 Phenol-d6
 Concen: 112.062 ng
 RT: 7.29 min Scan# 715
 Delta R.T. -0.01 min
 Lab File: BG040645.D
 Acq: 27 Apr 2019 2:17

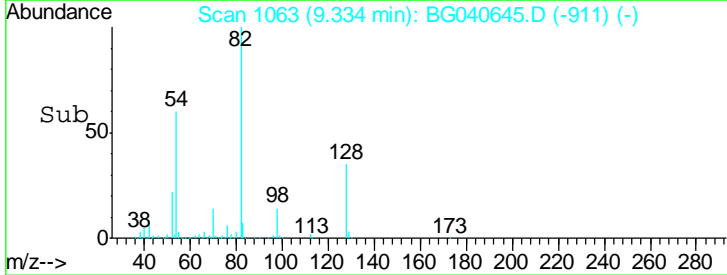
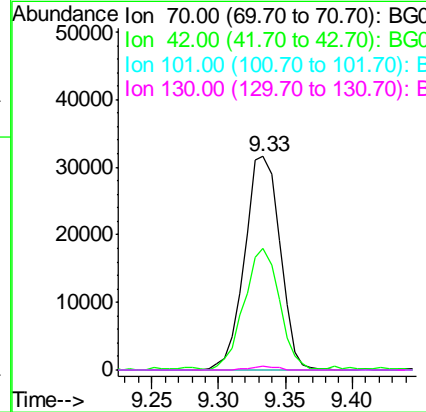
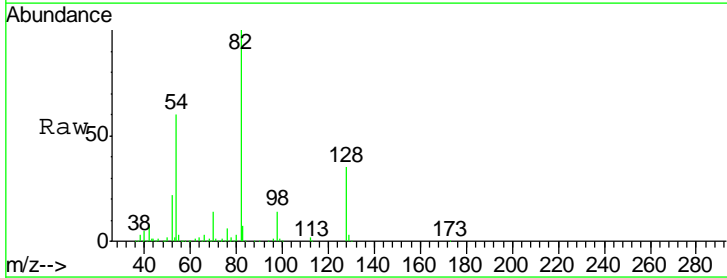
Instrument :
 BNA_G
 ClientSampled :
 SU-03-042419-A

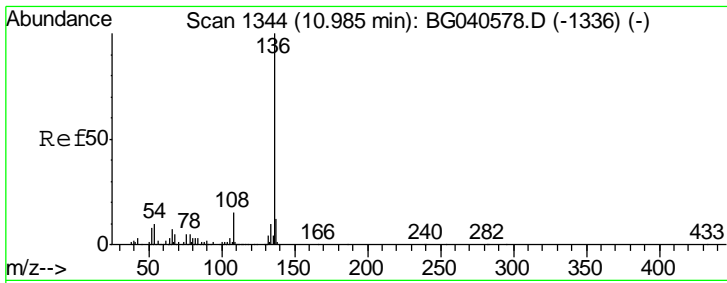
| Tgt Ion | Resp | Lower | Upper |
|---------|--------|-------|-------|
| 99 | 412945 | | |
| 42 | 27.8 | 21.8 | 32.8 |
| 71 | 47.8 | 38.6 | 57.8 |



#19
 n-Nitroso-di-n-propylamine
 Concen: 17.448 ng
 RT: 9.33 min Scan# 1063
 Delta R.T. 0.36 min
 Lab File: BG040645.D
 Acq: 27 Apr 2019 2:17

| Tgt Ion | Resp | Lower | Upper |
|---------|-------|-------|-------|
| 70 | 57879 | | |
| 42 | 56.8 | 57.1 | 85.7# |
| 101 | 0.0 | 7.8 | 11.8# |
| 130 | 1.6 | 14.6 | 21.8# |

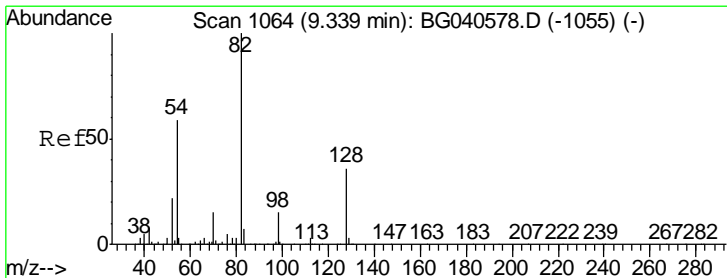
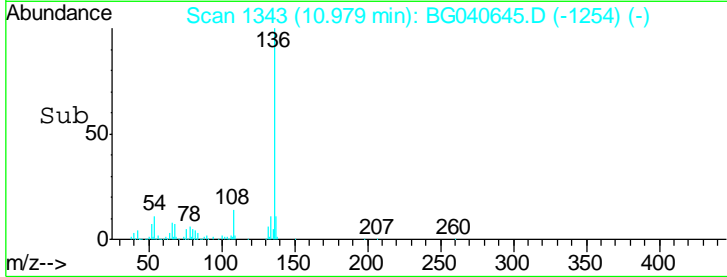
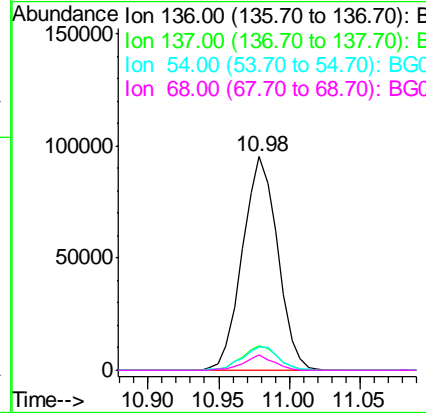
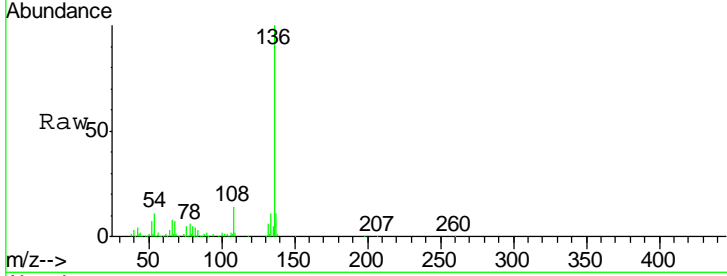




#21
 Naphthalene-d8
 Concen: 20.000 ng
 RT: 10.98 min Scan# 1343
 Delta R.T. -0.01 min
 Lab File: BG040645.D
 Acq: 27 Apr 2019 2:17

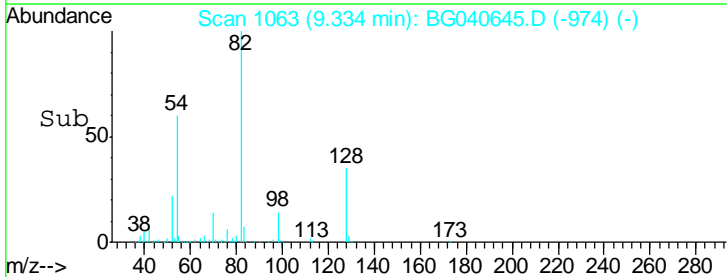
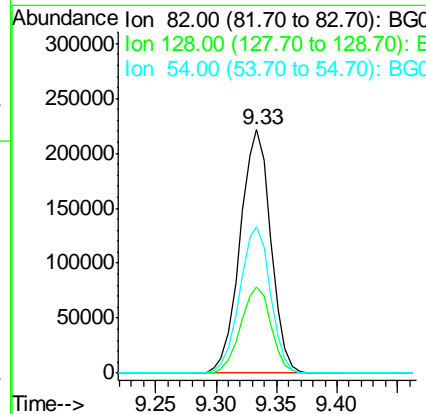
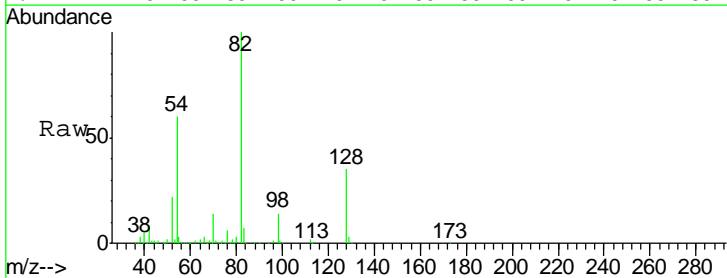
Instrument :
 BNA_G
 ClientSampled :
 SU-03-042419-A

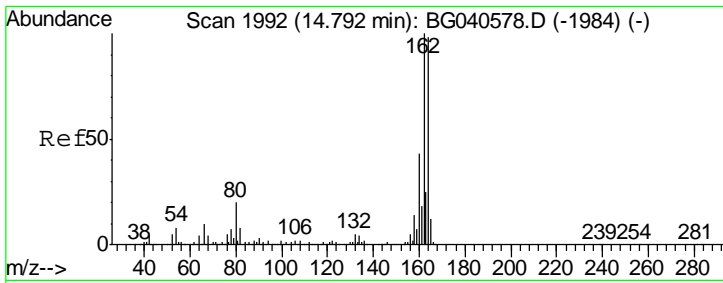
| Tgt Ion | Resp | Lower | Upper |
|---------|--------|-------|-------|
| 136 | 165997 | | |
| 137 | 11.3 | 9.7 | 14.5 |
| 54 | 11.1 | 8.6 | 12.8 |
| 68 | 7.3 | 4.8 | 7.2# |



#23
 Nitrobenzene-d5
 Concen: 108.992 ng
 RT: 9.33 min Scan# 1063
 Delta R.T. -0.01 min
 Lab File: BG040645.D
 Acq: 27 Apr 2019 2:17

| Tgt Ion | Resp | Lower | Upper |
|---------|--------|-------|-------|
| 82 | 391555 | | |
| 128 | 35.3 | 28.9 | 43.3 |
| 54 | 60.0 | 47.2 | 70.8 |

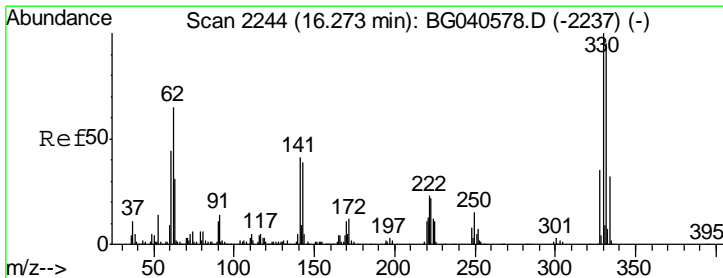
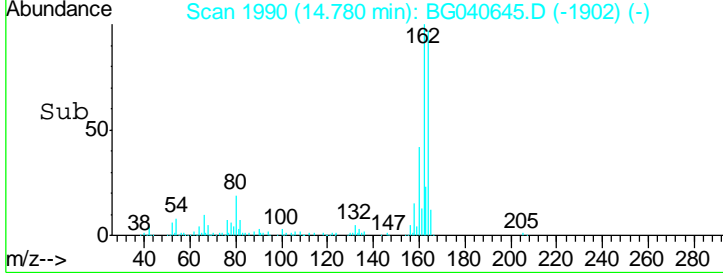
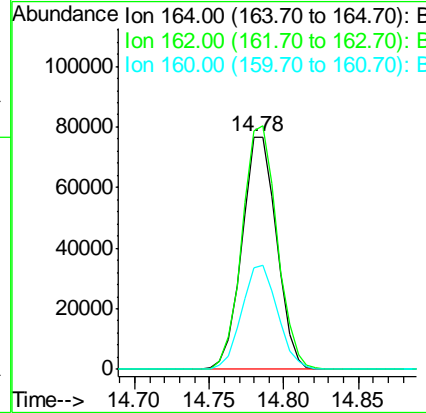
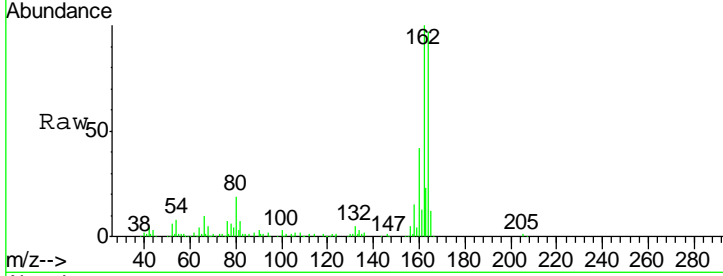




#39
 Acenaphthene-d10
 Concen: 20.000 ng
 RT: 14.78 min Scan# 1990
 Delta R.T. -0.01 min
 Lab File: BG040645.D
 Acq: 27 Apr 2019 2:17

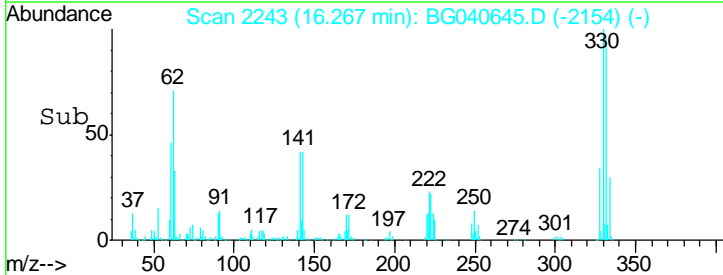
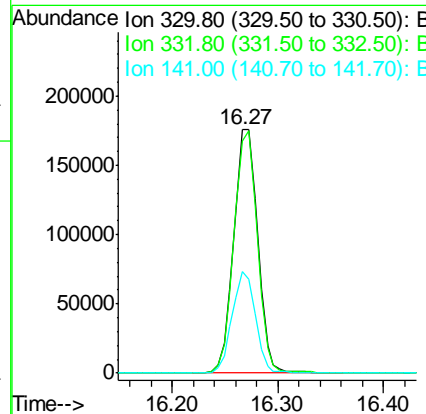
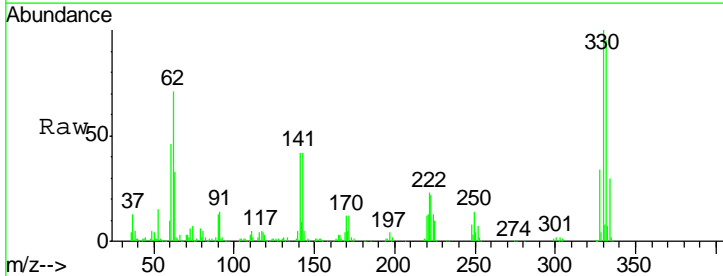
Instrument :
 BNA_G
 ClientSampled :
 SU-03-042419-A

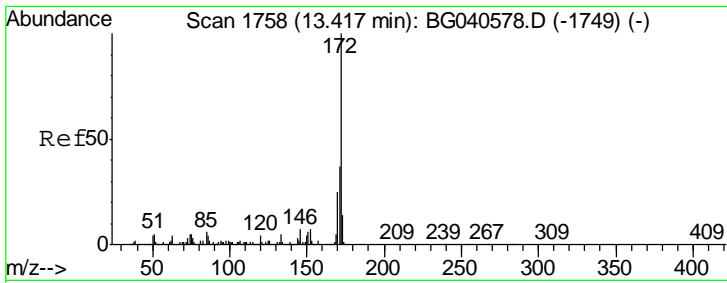
| Tgt Ion | Resp | Lower | Upper |
|---------|-------|-------|-------|
| 164 | 100 | | |
| 162 | 102.8 | 81.9 | 122.9 |
| 160 | 43.5 | 35.4 | 53.2 |



#42
 2,4,6-Tribromophenol
 Concen: 162.217 ng
 RT: 16.27 min Scan# 2243
 Delta R.T. -0.01 min
 Lab File: BG040645.D
 Acq: 27 Apr 2019 2:17

| Tgt Ion | Resp | Lower | Upper |
|---------|------|-------|-------|
| 330 | 100 | | |
| 332 | 96.7 | 75.9 | 113.9 |
| 141 | 41.0 | 32.4 | 48.6 |

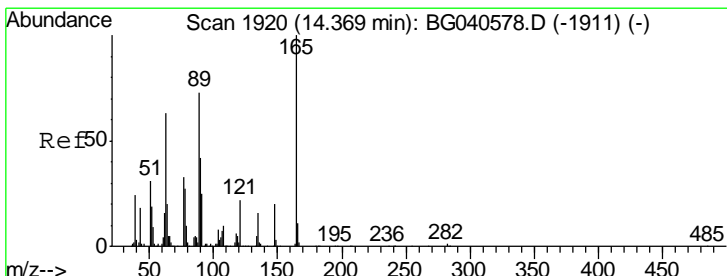
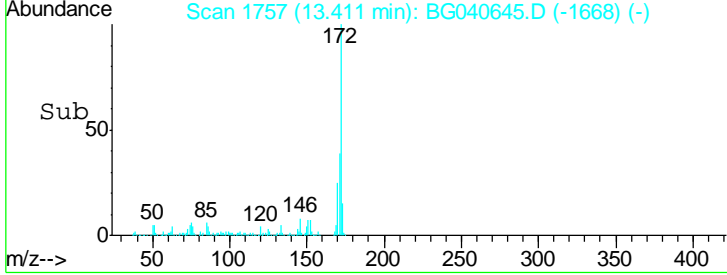
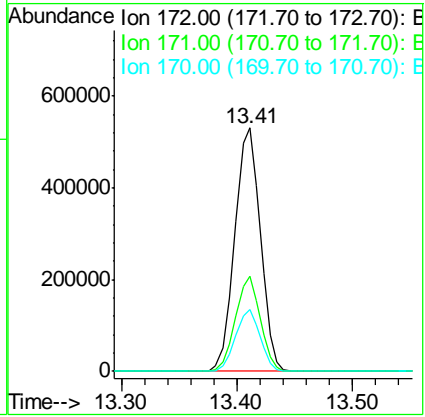
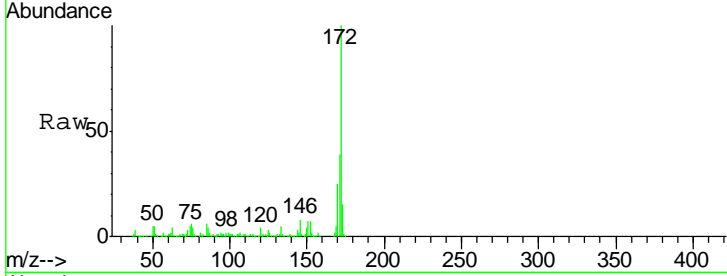




#45
 2-Fluorobiphenyl
 Concen: 95.481 ng
 RT: 13.41 min Scan# 1757
 Delta R.T. -0.01 min
 Lab File: BG040645.D
 Acq: 27 Apr 2019 2:17

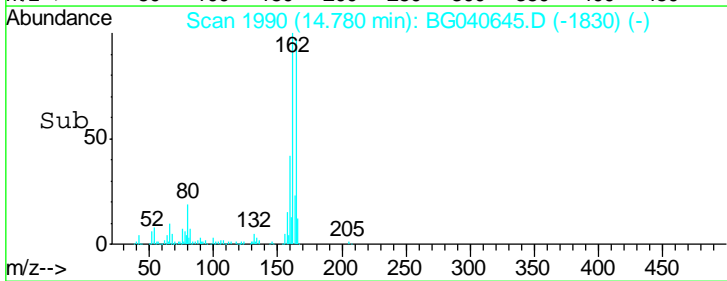
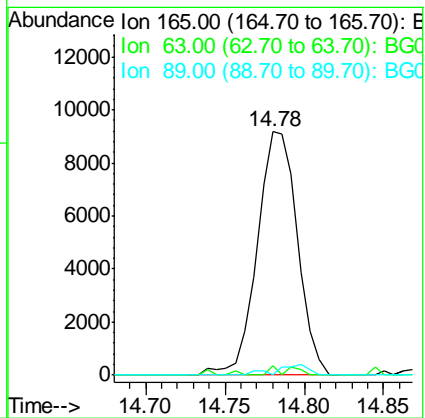
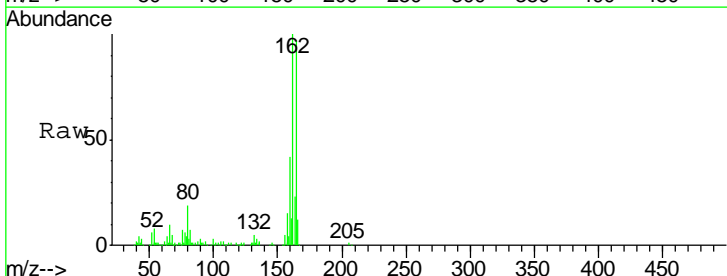
Instrument :
 BNA_G
 ClientSampled :
 SU-03-042419-A

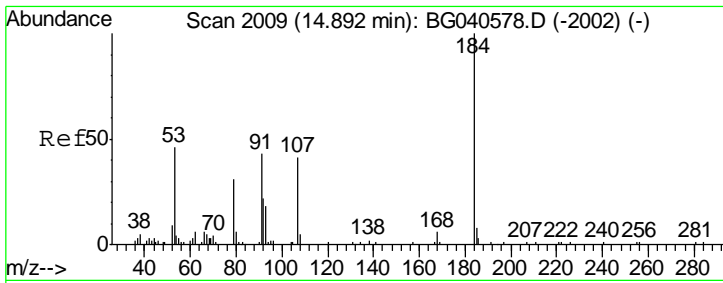
| Tgt Ion | Resp | Lower | Upper |
|---------|------|-------|-------|
| 172 | 100 | | |
| 171 | 39.3 | 29.4 | 44.2 |
| 170 | 25.4 | 19.9 | 29.9 |



#51
 2,6-Dinitrotoluene
 Concen: 8.019 ng
 RT: 14.78 min Scan# 1990
 Delta R.T. 0.41 min
 Lab File: BG040645.D
 Acq: 27 Apr 2019 2:17

| Tgt Ion | Resp | Lower | Upper |
|---------|------|-------|-------|
| 165 | 100 | | |
| 63 | 4.0 | 61.0 | 91.4# |
| 89 | 0.0 | 58.6 | 87.8# |

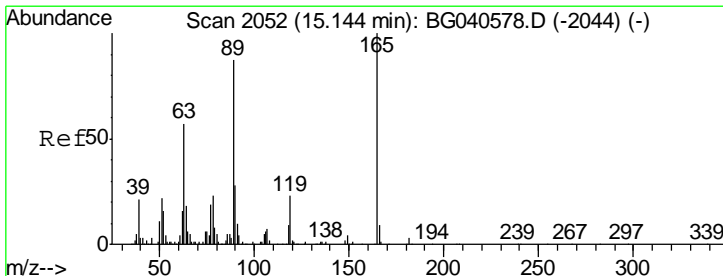
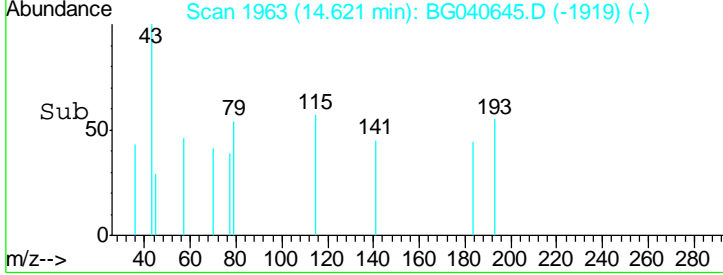
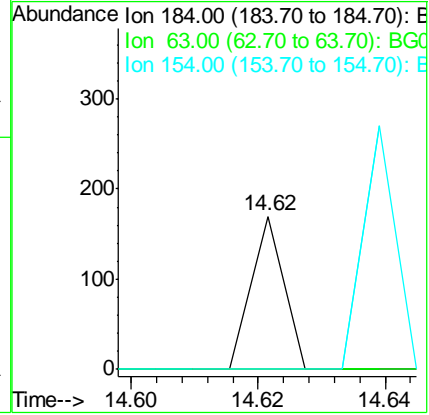
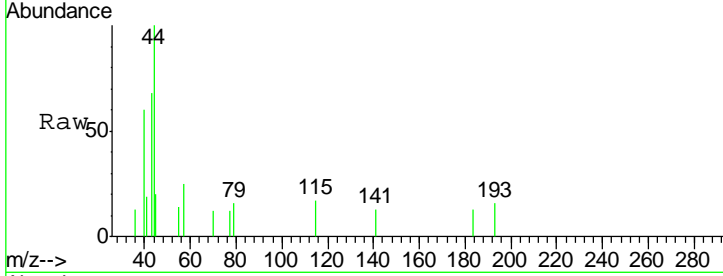




#54
 2,4-Dinitrophenol
 Concen: 7.063 ng
 RT: 14.62 min Scan# 1963
 Delta R.T. -0.27 min
 Lab File: BG040645.D
 Acq: 27 Apr 2019 2:17

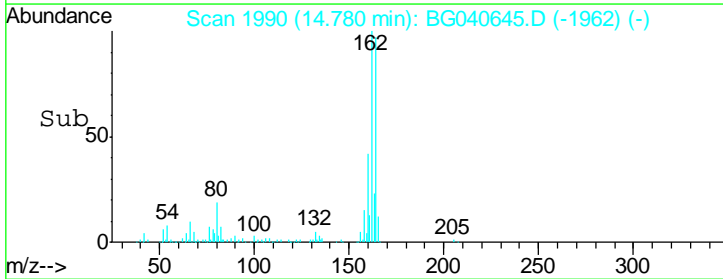
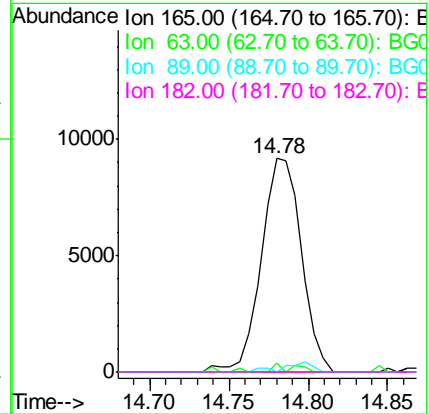
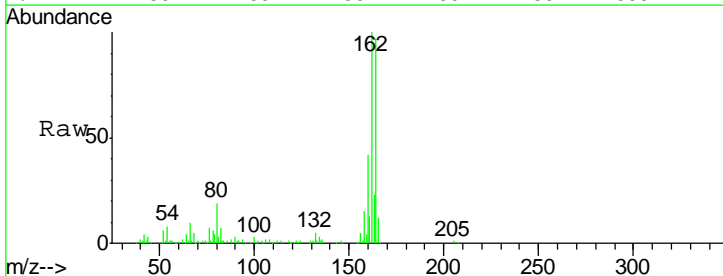
Instrument :
 BNA_G
ClientSampled :
 SU-03-042419-A

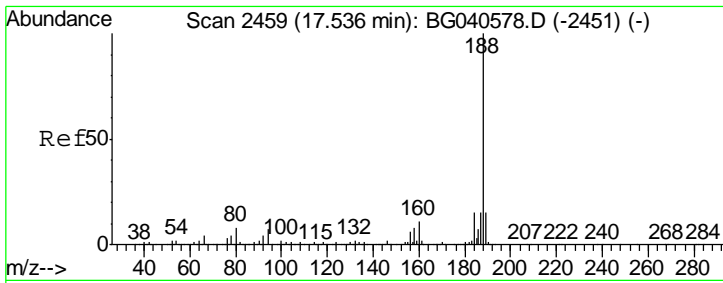
| Tgt Ion | Resp | Lower | Upper |
|---------|------|-------|-------|
| 184 | 100 | | |
| 63 | 0.0 | 51.8 | 77.6# |
| 154 | 0.0 | 43.6 | 65.4# |



#57
 2,4-Dinitrotoluene
 Concen: 5.902 ng
 RT: 14.78 min Scan# 1990
 Delta R.T. -0.36 min
 Lab File: BG040645.D
 Acq: 27 Apr 2019 2:17

| Tgt Ion | Resp | Lower | Upper |
|---------|------|-------|--------|
| 165 | 100 | | |
| 63 | 4.0 | 45.8 | 68.8# |
| 89 | 0.0 | 69.4 | 104.2# |
| 182 | 0.0 | 2.2 | 3.4# |

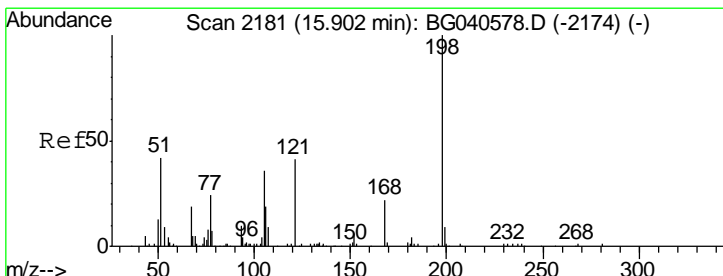
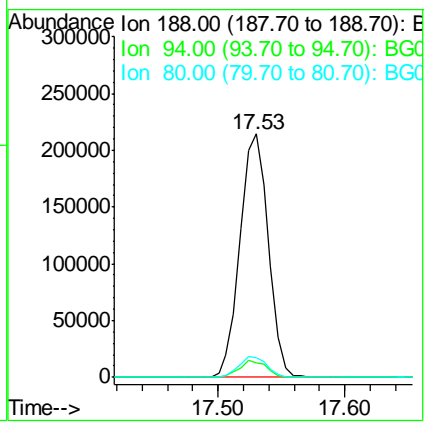
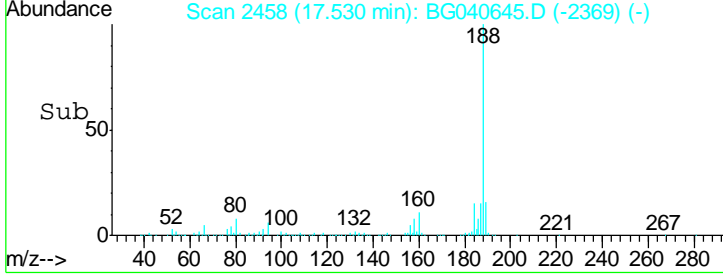
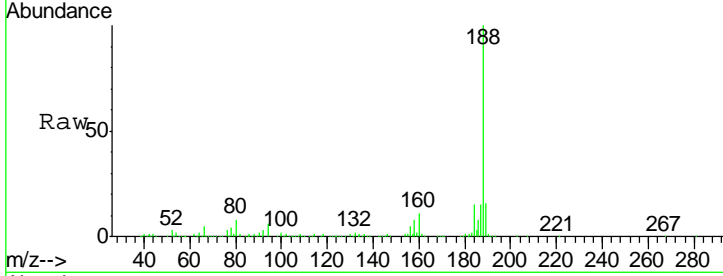




#64
 Phenanthrene-d10
 Concen: 20.000 ng
 RT: 17.53 min Scan# 2458
 Delta R.T. -0.01 min
 Lab File: BG040645.D
 Acq: 27 Apr 2019 2:17

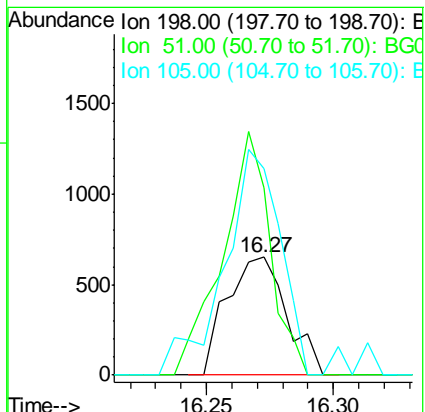
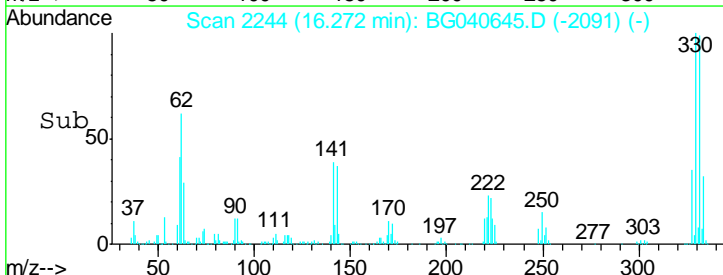
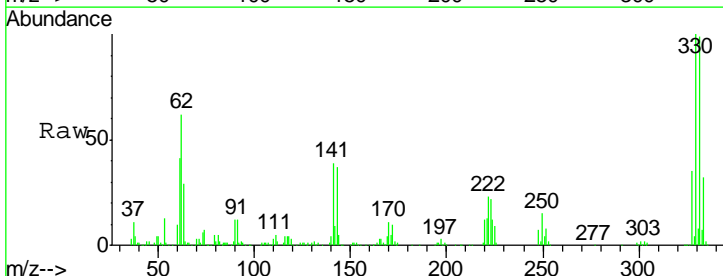
Instrument :
 BNA_G
 ClientSampleId :
 SU-03-042419-A

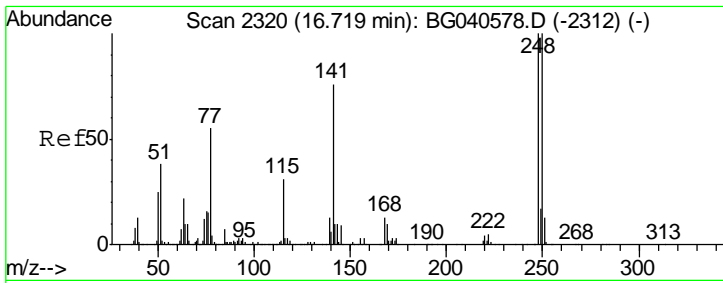
| Tgt Ion | Resp | Lower | Upper |
|---------|------|-------|-------|
| 188 | 100 | | |
| 94 | 5.7 | 5.6 | 8.4 |
| 80 | 7.8 | 6.4 | 9.6 |



#65
 4,6-Dinitro-2-methylphenol
 Concen: 7.660 ng
 RT: 16.27 min Scan# 2244
 Delta R.T. 0.37 min
 Lab File: BG040645.D
 Acq: 27 Apr 2019 2:17

| Tgt Ion | Resp | Lower | Upper |
|---------|------|-------|-------|
| 198 | 100 | | |
| 51 | 32.8 | 35.9 | 75.9# |
| 105 | 36.1 | 21.2 | 61.2 |

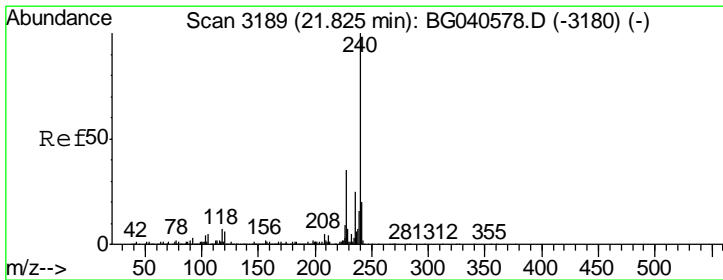
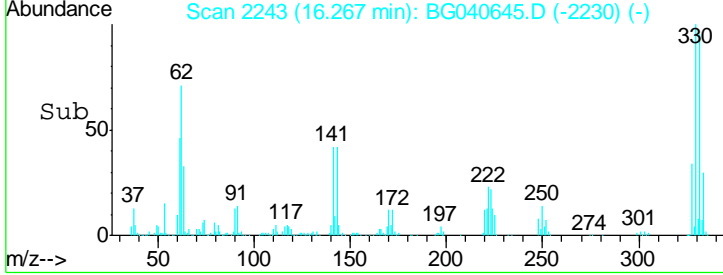
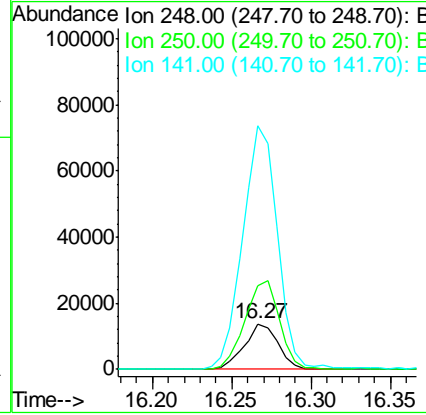
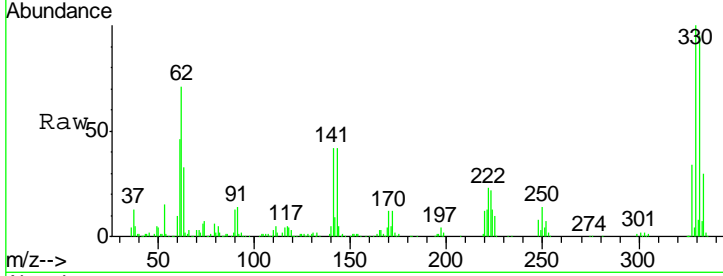




#67
 4-Bromophenyl-phenylether
 Concen: 4.915 ng
 RT: 16.27 min Scan# 2243
 Delta R.T. -0.45 min
 Lab File: BG040645.D
 Acq: 27 Apr 2019 2:17

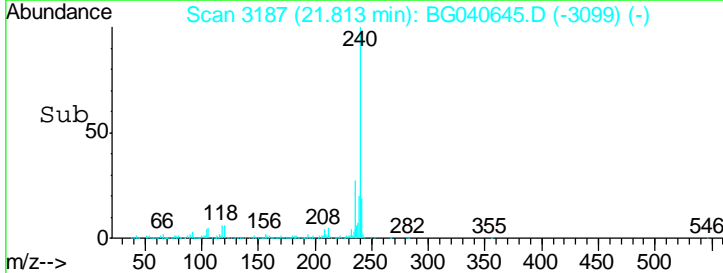
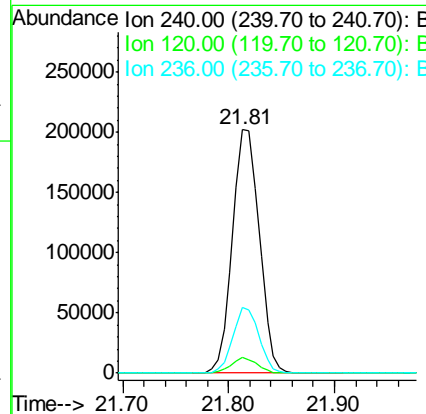
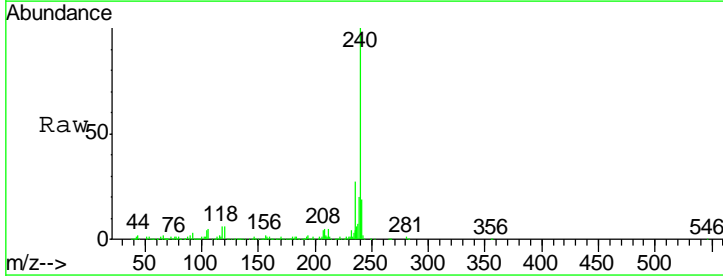
Instrument :
 BNA_G
 ClientSampled :
 SU-03-042419-A

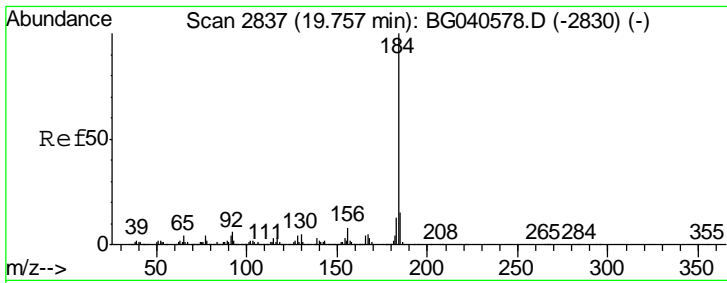
| Tgt Ion | Resp | Lower | Upper |
|---------|-------|-------|--------|
| 248 | 100 | | |
| 250 | 238.7 | 79.8 | 119.6# |
| 141 | 530.9 | 60.8 | 91.2# |



#76
 Chrysene-d12
 Concen: 20.000 ng
 RT: 21.81 min Scan# 3187
 Delta R.T. -0.01 min
 Lab File: BG040645.D
 Acq: 27 Apr 2019 2:17

| Tgt Ion | Resp | Lower | Upper |
|---------|------|-------|-------|
| 240 | 100 | | |
| 120 | 6.4 | 5.0 | 7.6 |
| 236 | 26.8 | 20.3 | 30.5 |

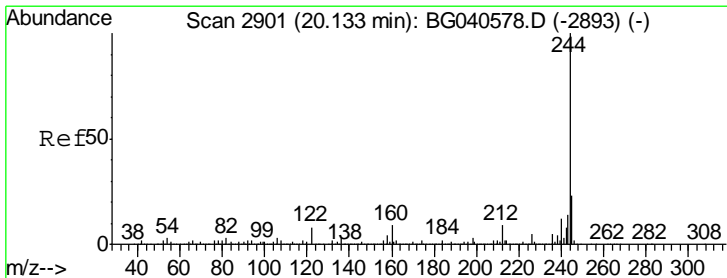
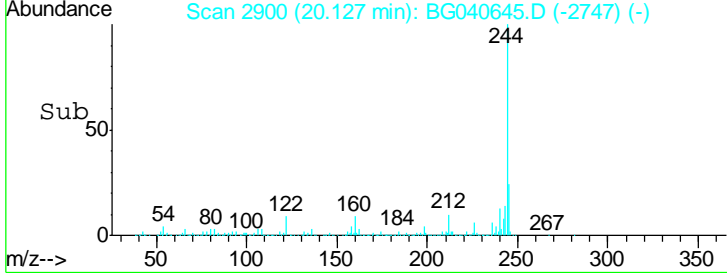
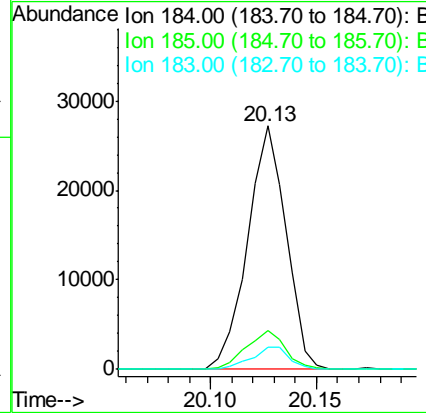
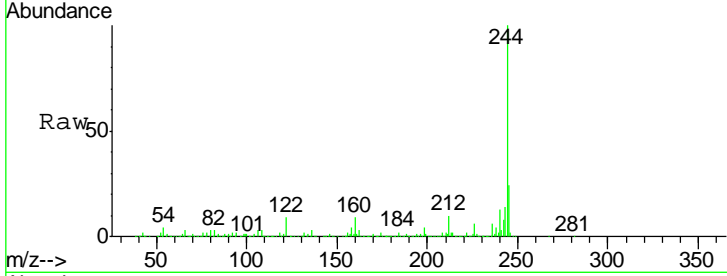




#77
Benzidine
Concen: 3.527 ng
RT: 20.13 min Scan# 2900
Delta R.T. 0.37 min
Lab File: BG040645.D
Acq: 27 Apr 2019 2:17

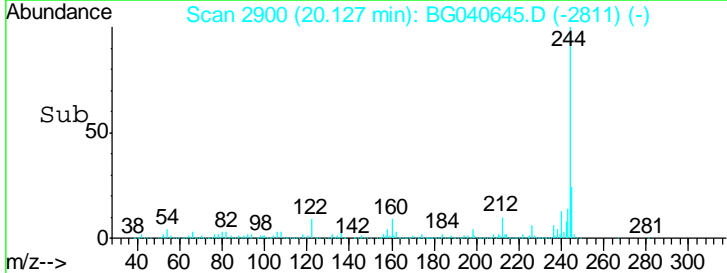
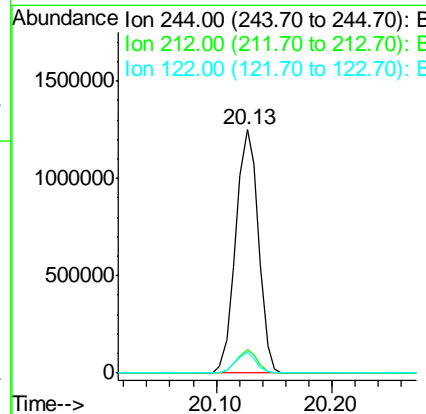
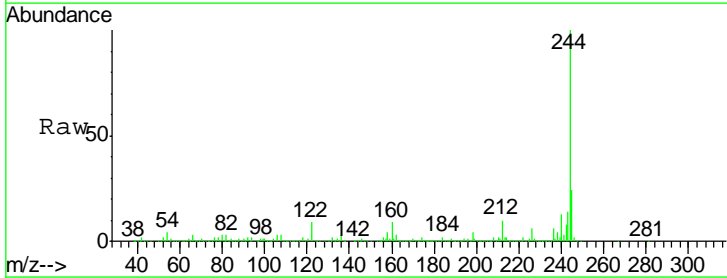
Instrument :
BNA_G
ClientSampled :
SU-03-042419-A

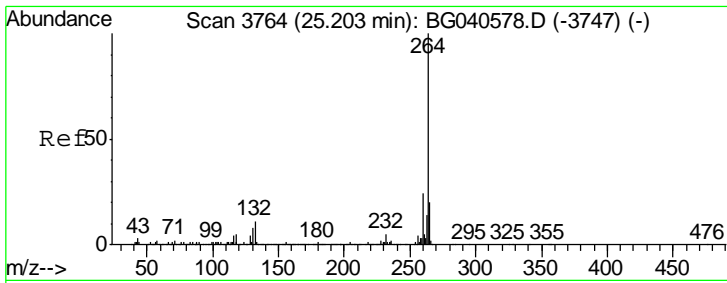
| Tgt Ion | Resp | Lower | Upper |
|---------|------|-------|-------|
| 184 | 100 | | |
| 185 | 15.7 | 11.8 | 17.8 |
| 183 | 8.9 | 10.2 | 15.2 |



#79
Terphenyl-d14
Concen: 106.056 ng
RT: 20.13 min Scan# 2900
Delta R.T. -0.01 min
Lab File: BG040645.D
Acq: 27 Apr 2019 2:17

| Tgt Ion | Resp | Lower | Upper |
|---------|------|-------|-------|
| 244 | 100 | | |
| 212 | 9.7 | 7.2 | 10.8 |
| 122 | 8.8 | 6.6 | 10.0 |





#87
 Perylene-d12
 Concen: 20.000 ng
 RT: 25.19 min Scan# 3761
 Delta R.T. -0.02 min
 Lab File: BG040645.D
 Acq: 27 Apr 2019 2:17

Instrument :
 BNA_G
 ClientSampled :
 SU-03-042419-A

Tot Ion: 264 Resp: 366739

| Ion | Ratio | Lower | Upper |
|-----|-------|-------|-------|
| 264 | 100 | | |
| 260 | 23.4 | 19.2 | 28.8 |
| 265 | 21.3 | 16.6 | 25.0 |

