

Data Path : Z:\svoasrv\HPCHEM1\BNA_G\Data\BG042722\
 Data File : BG053356.D
 Acq On : 28 Apr 2022 1:57
 Operator : CG/JU
 Sample : N2482-04
 Misc :
 ALS Vial : 18 Sample Multiplier: 1

Instrument :
 BNA_G
 ClientSampleId :
 COP-1R

Quant Time: Apr 28 06:41:46 2022
 Quant Method : Z:\svoasrv\HPCHEM1\BNA_G\Methods\8270-BG040822.M
 Quant Title : ASP BNA STANDARDS FOR 5 POINT CALIBRATION
 QLast Update : Sun Apr 24 01:13:30 2022
 Response via : Initial Calibration

Compound	R.T.	QIon	Response	Conc	Units	Dev(Min)
Internal Standards						
1) 1,4-Dichlorobenzene-d4	8.106	152	26232	20.000	ng	# 0.00
21) Naphthalene-d8	10.914	136	105820	20.000	ng	# 0.00
39) Acenaphthene-d10	14.726	164	78250	20.000	ng	0.00
64) Phenanthrene-d10	17.469	188	175673	20.000	ng	-0.01
76) Chrysene-d12	21.758	240	195529	20.000	ng	0.00
86) Perylene-d12	25.053	264	211474	20.000	ng	0.00
System Monitoring Compounds						
5) 2-Fluorophenol	5.668	112	184554	120.601	ng	0.00
7) Phenol-d6	7.266	99	198990	84.322	ng	0.00
23) Nitrobenzene-d5	9.269	82	307166	117.860	ng	0.00
42) 2,4,6-Tribromophenol	16.218	330	206414	165.804	ng	0.00
45) 2-Fluorobiphenyl	13.351	172	660848	116.453	ng	0.00
79) Terphenyl-d14	20.078	244	1167182	100.817	ng	0.00

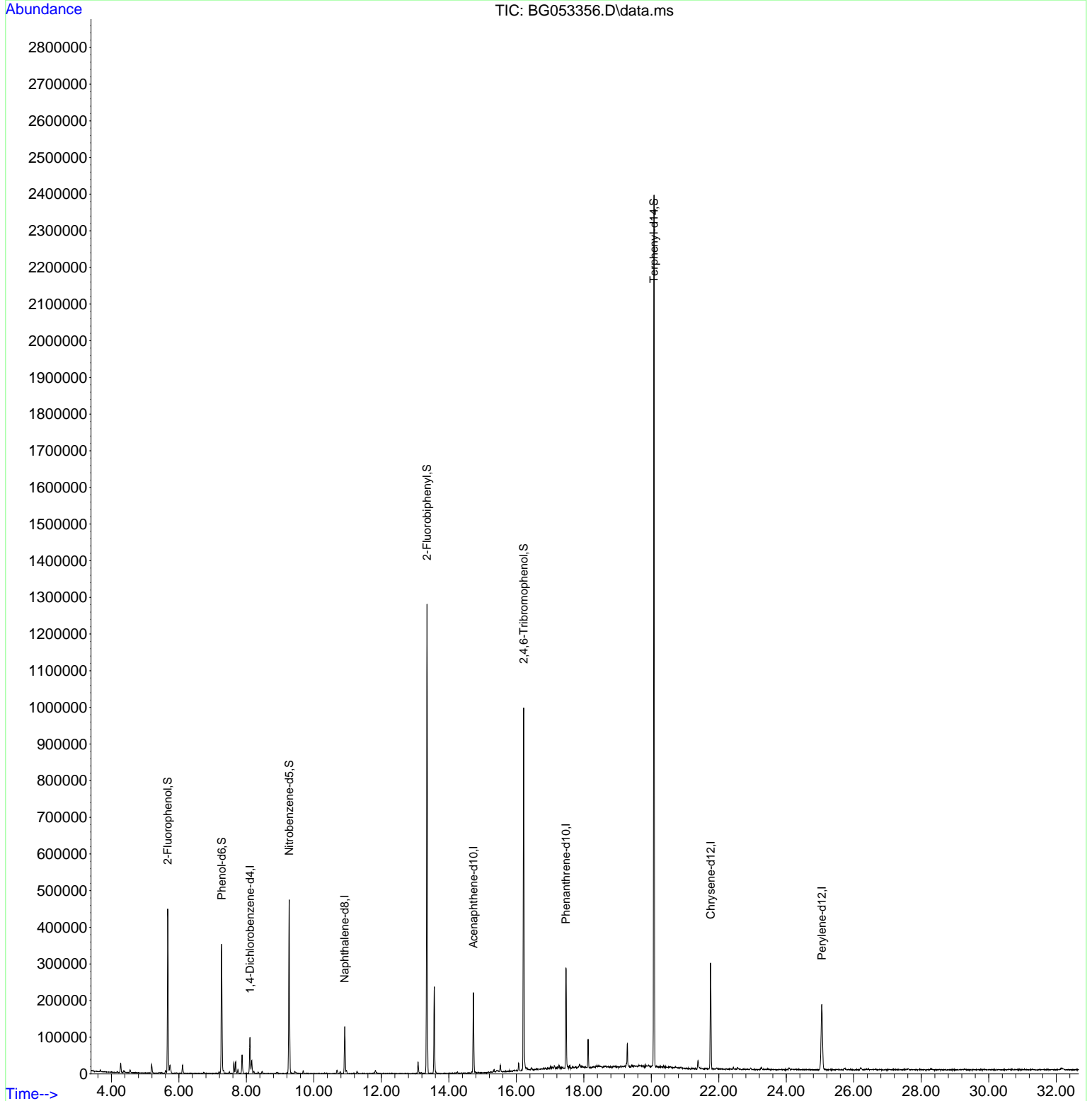
Target Compounds Qvalue

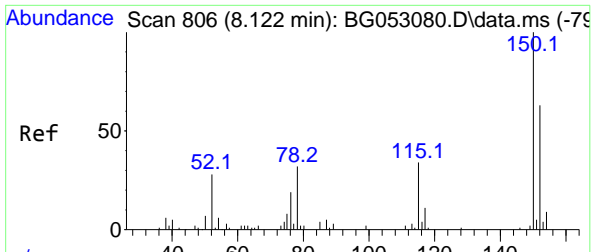
(#) = qualifier out of range (m) = manual integration (+) = signals summed

Data Path : Z:\svoasrv\HPCHEM1\BNA_G\Data\BG042722\
 Data File : BG053356.D
 Acq On : 28 Apr 2022 1:57
 Operator : CG/JU
 Sample : N2482-04
 Misc :
 ALS Vial : 18 Sample Multiplier: 1

Instrument :
 BNA_G
 ClientSampleId :
 COP-1R

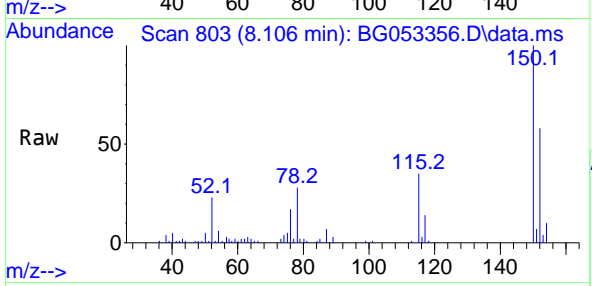
Quant Time: Apr 28 06:41:46 2022
 Quant Method : Z:\svoasrv\HPCHEM1\BNA_G\Methods\8270-BG040822.M
 Quant Title : ASP BNA STANDARDS FOR 5 POINT CALIBRATION
 QLast Update : Sun Apr 24 01:13:30 2022
 Response via : Initial Calibration



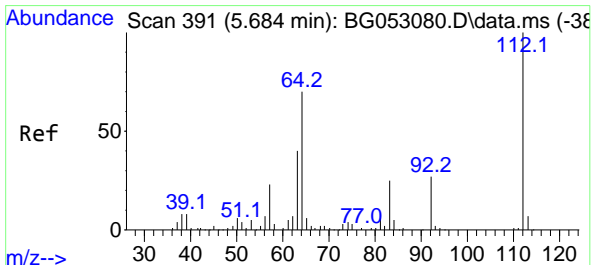
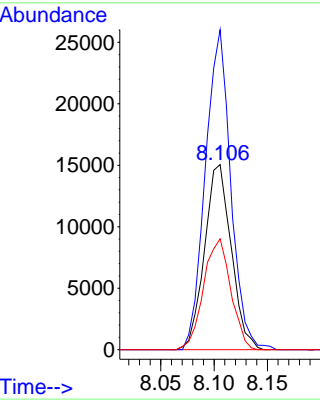
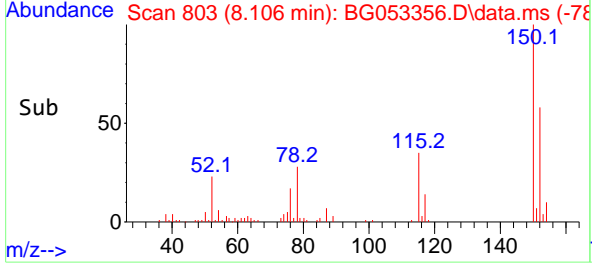


#1
 1,4-Dichlorobenzene-d4
 Concen: 20.000 ng
 RT: 8.106 min Scan# 80
 Delta R.T. -0.007 min
 Lab File: BG053356.D
 Acq: 28 Apr 2022 1:57

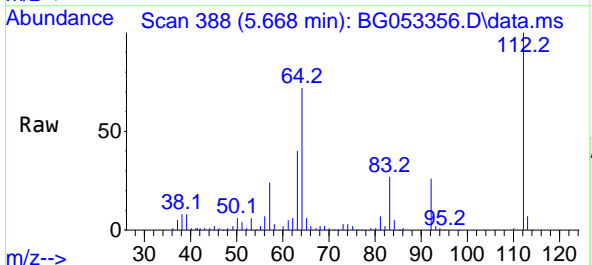
Instrument : BNA_G
 ClientSampleId : COP-1R



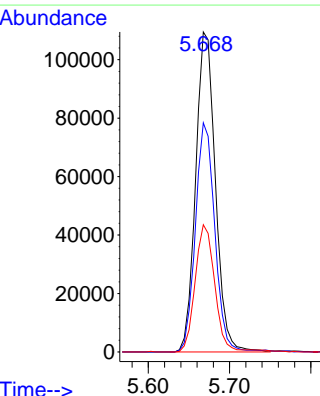
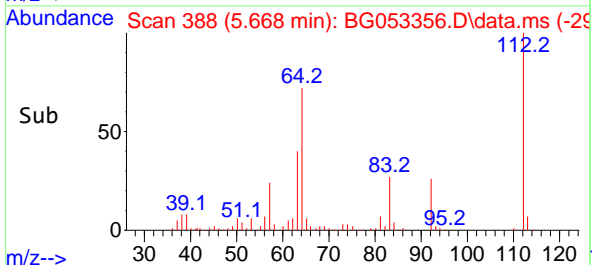
Tgt Ion:152 Resp: 26232
 Ion Ratio Lower Upper
 152 100
 150 172.9 114.6 172.0#
 115 59.9 45.9 68.9

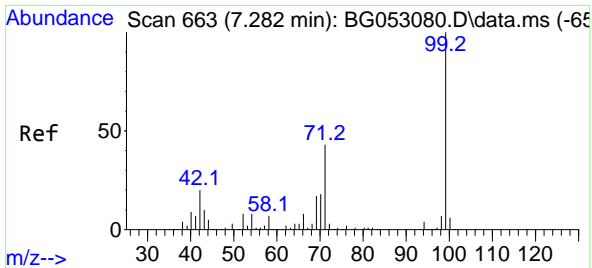


#5
 2-Fluorophenol
 Concen: 120.601 ng
 RT: 5.668 min Scan# 388
 Delta R.T. -0.008 min
 Lab File: BG053356.D
 Acq: 28 Apr 2022 1:57



Tgt Ion:112 Resp: 184554
 Ion Ratio Lower Upper
 112 100
 64 71.6 48.0 72.0
 63 39.8 26.5 39.7#



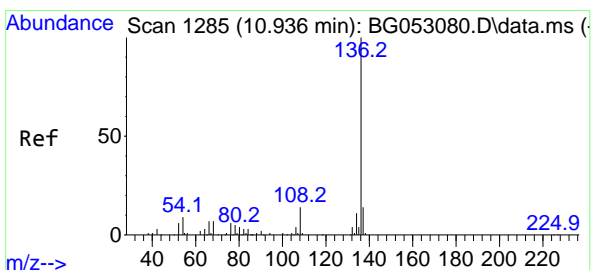
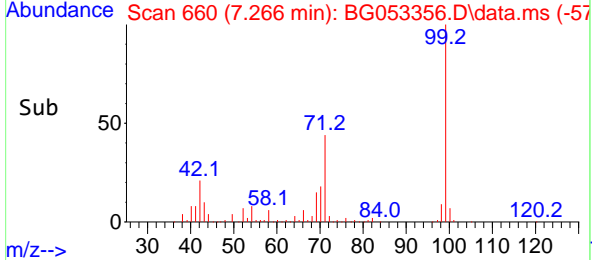
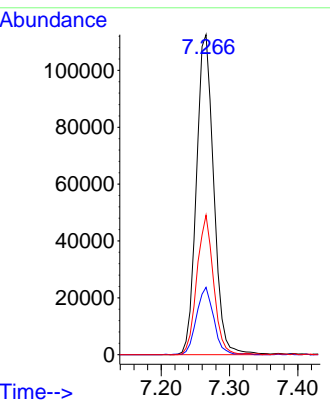
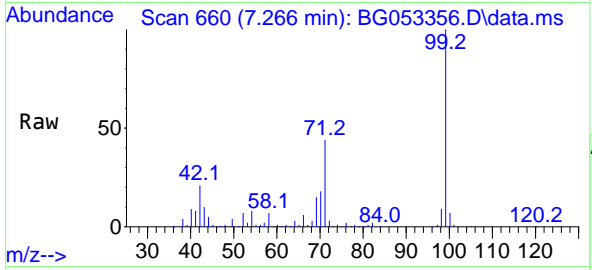


#7
Phenol-d6
Concen: 84.322 ng
RT: 7.266 min Scan# 60
Delta R.T. -0.008 min
Lab File: BG053356.D
Acq: 28 Apr 2022 1:57

Instrument :
BNA_G
ClientSampleId :
COP-1R

Tgt Ion: 99 Resp: 198990

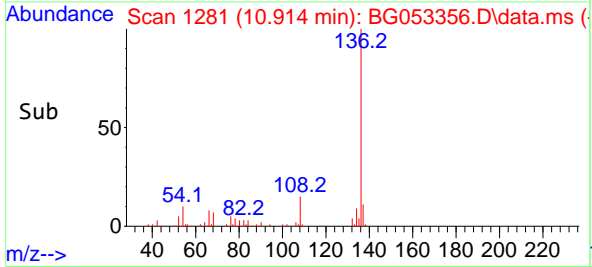
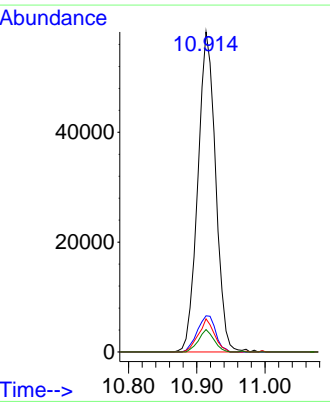
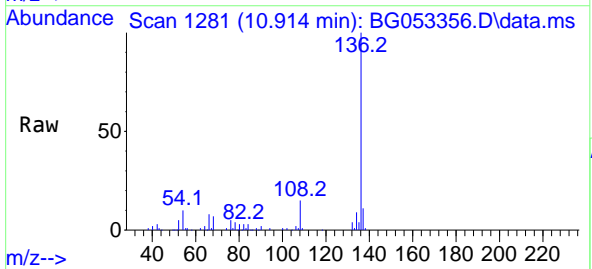
Ion	Ratio	Lower	Upper
99	100		
42	21.0	14.7	22.1
71	43.6	29.2	43.8

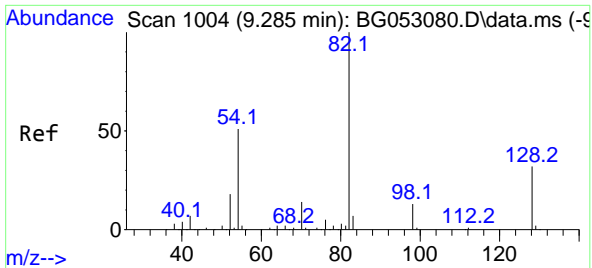


#21
Naphthalene-d8
Concen: 20.000 ng
RT: 10.914 min Scan# 1281
Delta R.T. -0.008 min
Lab File: BG053356.D
Acq: 28 Apr 2022 1:57

Tgt Ion: 136 Resp: 105820

Ion	Ratio	Lower	Upper
136	100		
137	11.3	9.4	14.2
54	10.4	6.4	9.6#
68	7.0	5.0	7.6



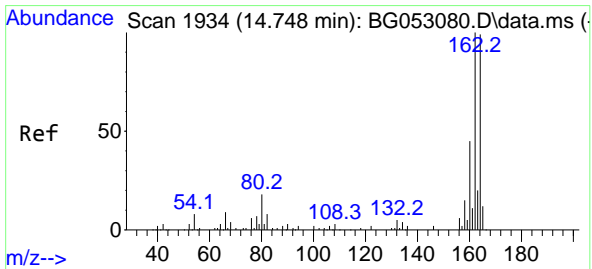
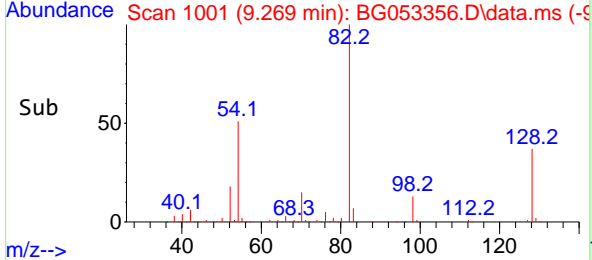
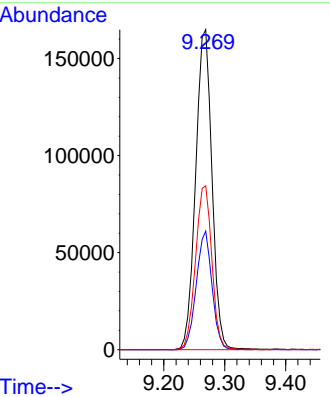
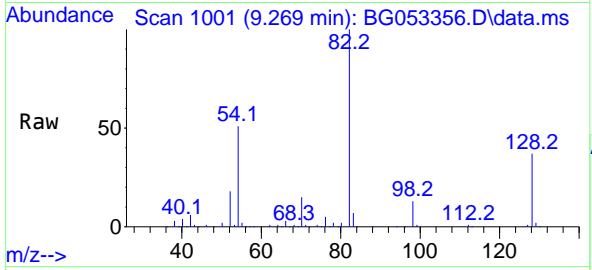


#23
 Nitrobenzene-d5
 Concen: 117.860 ng
 RT: 9.269 min Scan# 1001
 Delta R.T. -0.008 min
 Lab File: BG053356.D
 Acq: 28 Apr 2022 1:57

Instrument :
 BNA_G
 ClientSampleId :
 COP-1R

Tgt Ion: 82 Resp: 307166

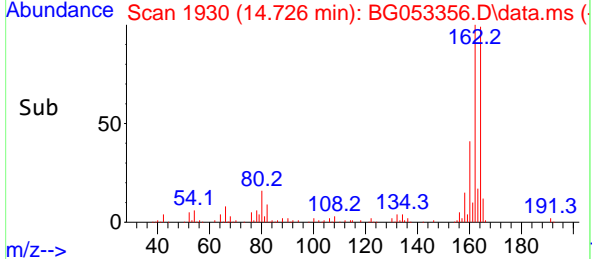
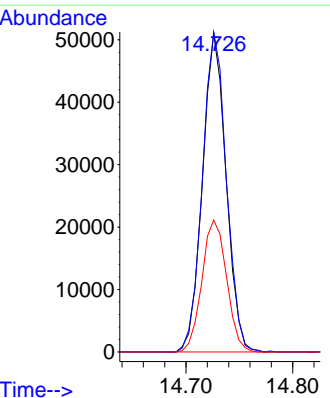
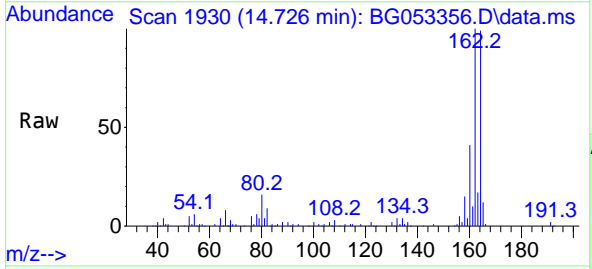
Ion	Ratio	Lower	Upper
82	100		
128	37.1	31.3	46.9
54	51.2	37.8	56.8

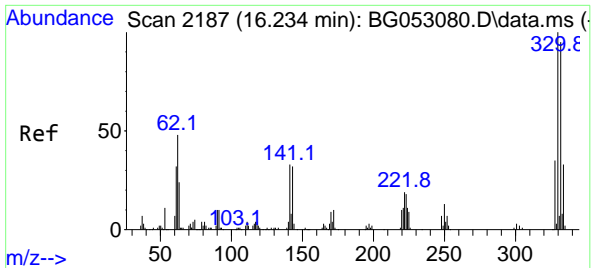


#39
 Acenaphthene-d10
 Concen: 20.000 ng
 RT: 14.726 min Scan# 1930
 Delta R.T. -0.008 min
 Lab File: BG053356.D
 Acq: 28 Apr 2022 1:57

Tgt Ion: 164 Resp: 78250

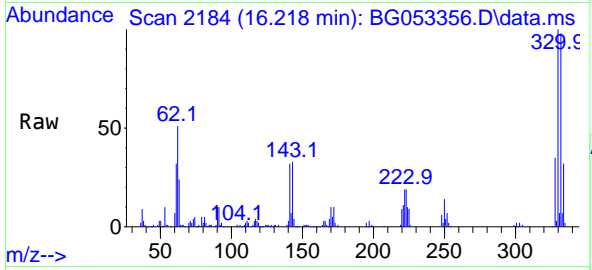
Ion	Ratio	Lower	Upper
164	100		
162	100.5	80.0	120.0
160	41.4	38.8	58.2



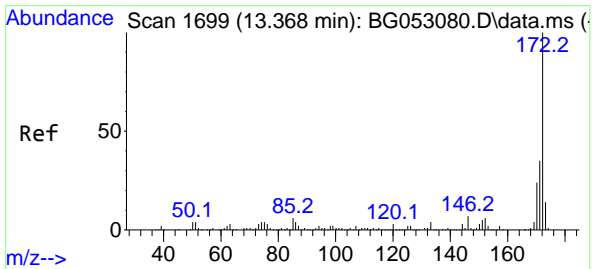
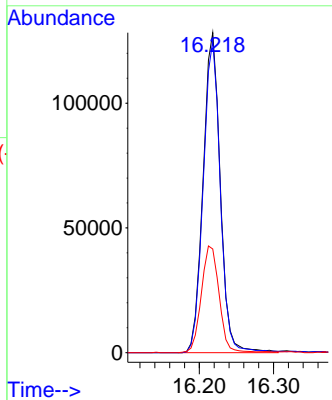
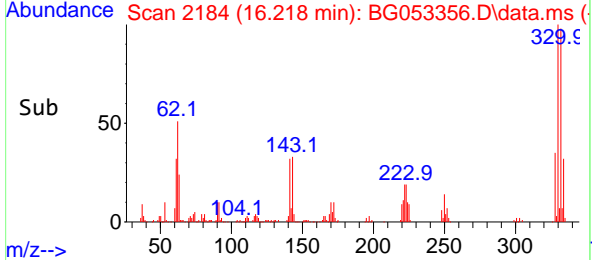


#42
 2,4,6-Tribromophenol
 Concen: 165.804 ng
 RT: 16.218 min Scan# 2184
 Delta R.T. -0.008 min
 Lab File: BG053356.D
 Acq: 28 Apr 2022 1:57

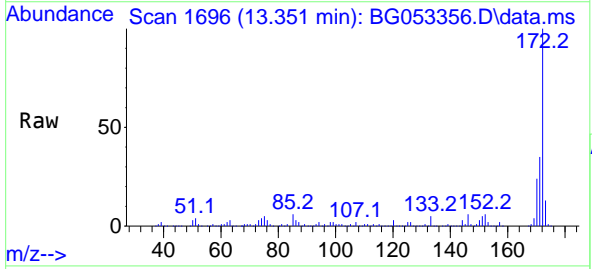
Instrument :
 BNA_G
 ClientSampleId :
 COP-1R



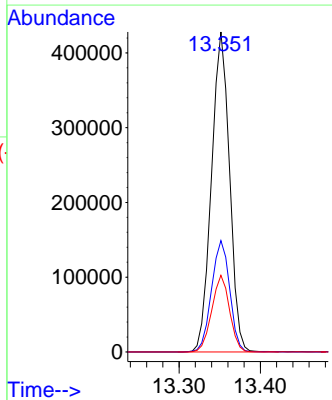
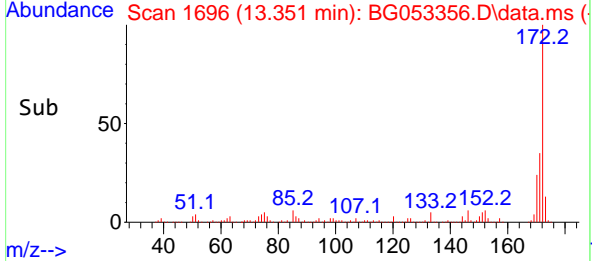
Tgt Ion:330 Resp: 206414
 Ion Ratio Lower Upper
 330 100
 332 96.8 75.8 113.6
 141 34.5 24.6 36.8

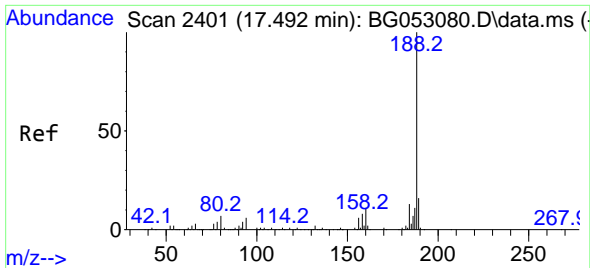


#45
 2-Fluorobiphenyl
 Concen: 116.453 ng
 RT: 13.351 min Scan# 1696
 Delta R.T. -0.008 min
 Lab File: BG053356.D
 Acq: 28 Apr 2022 1:57



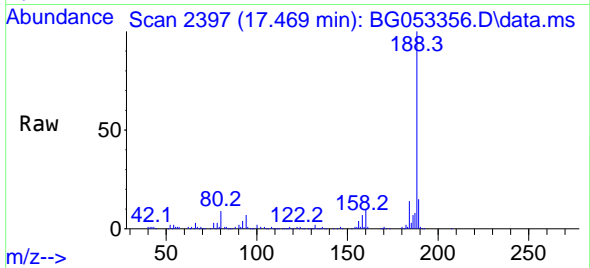
Tgt Ion:172 Resp: 660848
 Ion Ratio Lower Upper
 172 100
 171 34.8 28.3 42.5
 170 23.9 18.0 27.0



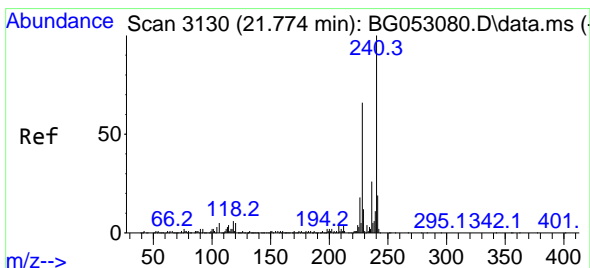
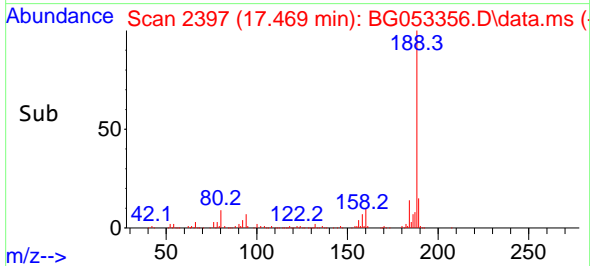
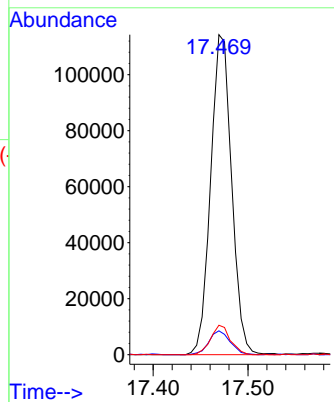


#64
 Phenanthrene-d10
 Concen: 20.000 ng
 RT: 17.469 min Scan# 21
 Delta R.T. -0.014 min
 Lab File: BG053356.D
 Acq: 28 Apr 2022 1:57

Instrument :
 BNA_G
 ClientSampleId :
 COP-1R

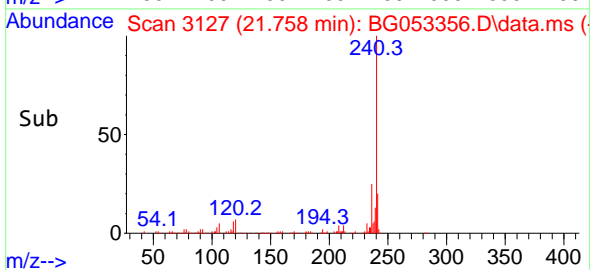
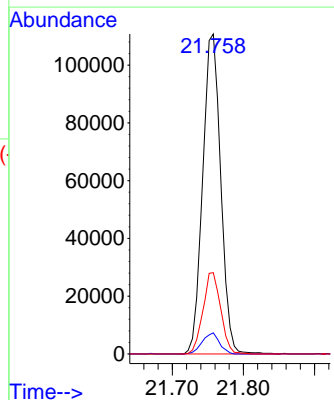
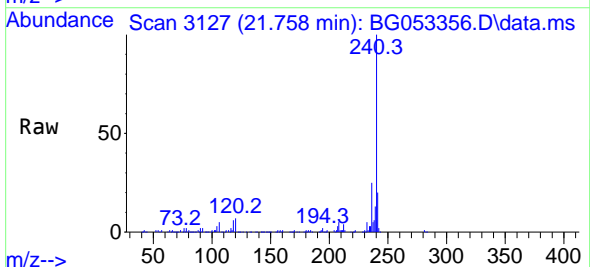


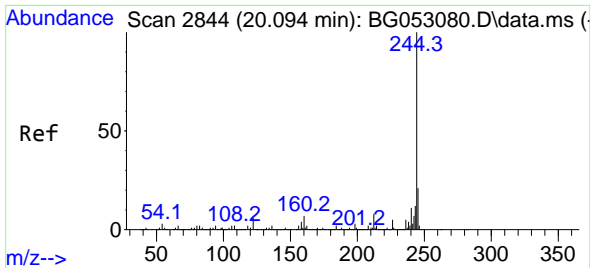
Tgt Ion:188 Resp: 175673
 Ion Ratio Lower Upper
 188 100
 94 7.4 5.7 8.5
 80 9.2 7.2 10.8



#76
 Chrysene-d12
 Concen: 20.000 ng
 RT: 21.758 min Scan# 3127
 Delta R.T. -0.008 min
 Lab File: BG053356.D
 Acq: 28 Apr 2022 1:57

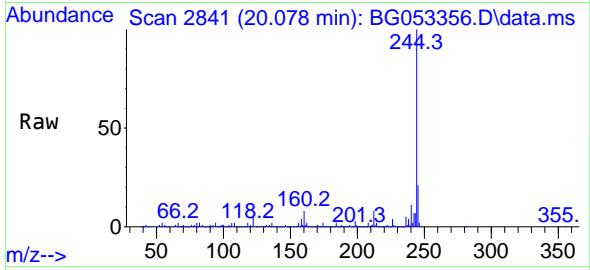
Tgt Ion:240 Resp: 195529
 Ion Ratio Lower Upper
 240 100
 120 6.6 5.4 8.0
 236 25.4 19.8 29.6



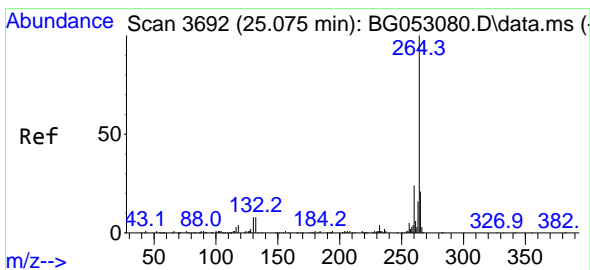
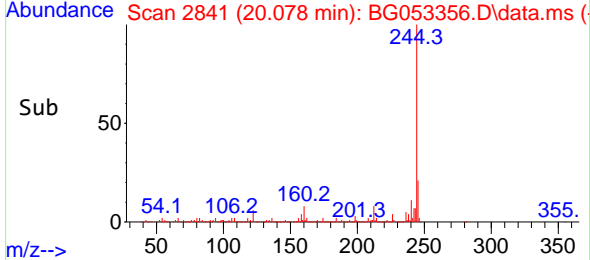
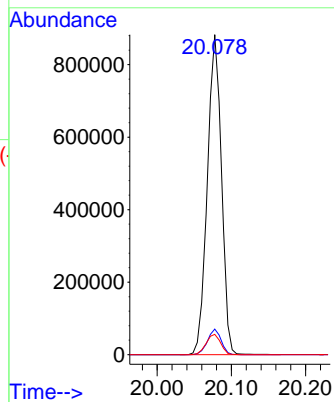


#79
 Terphenyl-d14
 Concen: 100.817 ng
 RT: 20.078 min Scan# 21
 Delta R.T. -0.008 min
 Lab File: BG053356.D
 Acq: 28 Apr 2022 1:57

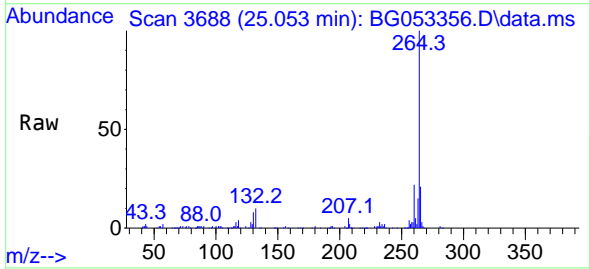
Instrument :
 BNA_G
 ClientSampleId :
 COP-1R



Tgt Ion:244 Resp: 1167182
 Ion Ratio Lower Upper
 244 100
 212 8.0 5.4 8.2
 122 6.4 5.8 8.6



#86
 Perylene-d12
 Concen: 20.000 ng
 RT: 25.053 min Scan# 3688
 Delta R.T. -0.008 min
 Lab File: BG053356.D
 Acq: 28 Apr 2022 1:57



Tgt Ion:264 Resp: 211474
 Ion Ratio Lower Upper
 264 100
 260 21.6 18.2 27.2
 265 21.4 15.1 22.7

