

Data File : BG026751.D  
 Acq On : 28 Apr 2017 17:45  
 Operator : SJ/MA  
 Sample : I2816-07  
 Misc :  
 ALS Vial : 10 Sample Multiplier: 1

Instrument :  
 BNA\_G  
 ClientSampleId :  
 JHT19

Quant Time: Apr 29 00:39:53 2017  
 Quant Method : Z:\HPCHEM1\BNA\_G\METHODS\SOM-EPA-BG042717.M  
 Quant Title : SVOA CALIBRATION  
 QLast Update : Sat Apr 29 00:39:01 2017  
 Response via : Initial Calibration

Internal Standards	R.T.	QIon	Response	Conc	Units	Dev(Min)
1) 1,4-Dichlorobenzene-d4	8.01	152	127002	20.00	ng/ul	0.00
18) Naphthalene-d8	10.81	136	648884	20.00	ng/ul	0.00
35) Acenaphthene-d10	14.62	164	381467	20.00	ng/ul	0.00
61) Phenanthrene-d10	17.36	188	730810	20.00	ng/ul	0.00
75) Chrysene-d12	21.60	240	663804	20.00	ng/ul	0.00
83) Perylene-d12	24.76	264	686452	20.00	ng/ul	0.00

System Monitoring Compounds

3) 1,4-Dioxane-d8	3.43	96	17419	6.18	ng/uL	0.00
5) Phenol-d5	7.19	99	412648	36.41	ng/ul	0.00
7) Bis-(2-Chloroethyl)ether-d	7.33	67	233749	35.07	ng/ul	0.00
9) 2-Chlorophenol-d4	7.55	132	330605	34.36	ng/ul	0.00
13) 4-Methylphenol-d8	8.73	113	361245	38.40	ng/ul	0.00
19) Nitrobenzene-d5	9.17	128	182878	33.72	ng/ul	0.00
22) 2-Nitrophenol-d4	9.89	143	209681	35.54	ng/ul	0.00
26) 2,4-Dichlorophenol-d3	10.44	165	331518	35.37	ng/ul	0.00
29) 4-Chloroaniline-d4	10.94	131	544217	43.37	ng/ul	0.00
43) Dimethylphthalate-d6	14.02	166	1139952	37.13	ng/ul	0.00
46) Acenaphthylene-d8	14.31	160	1424628	36.94	ng/ul	0.00
51) 4-Nitrophenol-d4	14.84	143	183968	33.24	ng/ul	0.00
57) Fluorene-d10	15.61	176	985368	36.77	ng/ul	0.00
62) 4,6-Dinitro-2-methylphenol	15.73	200	144083	32.47	ng/ul	0.00
70) Anthracene-d10	17.46	188	1384453	39.04	ng/ul	0.00
76) Pyrene-d10	19.74	212	1341830	38.30	ng/ul	0.00
87) Benzo(a)pyrene-d12	24.54	264	1324494	40.81	ng/ul	0.00

Target Compounds

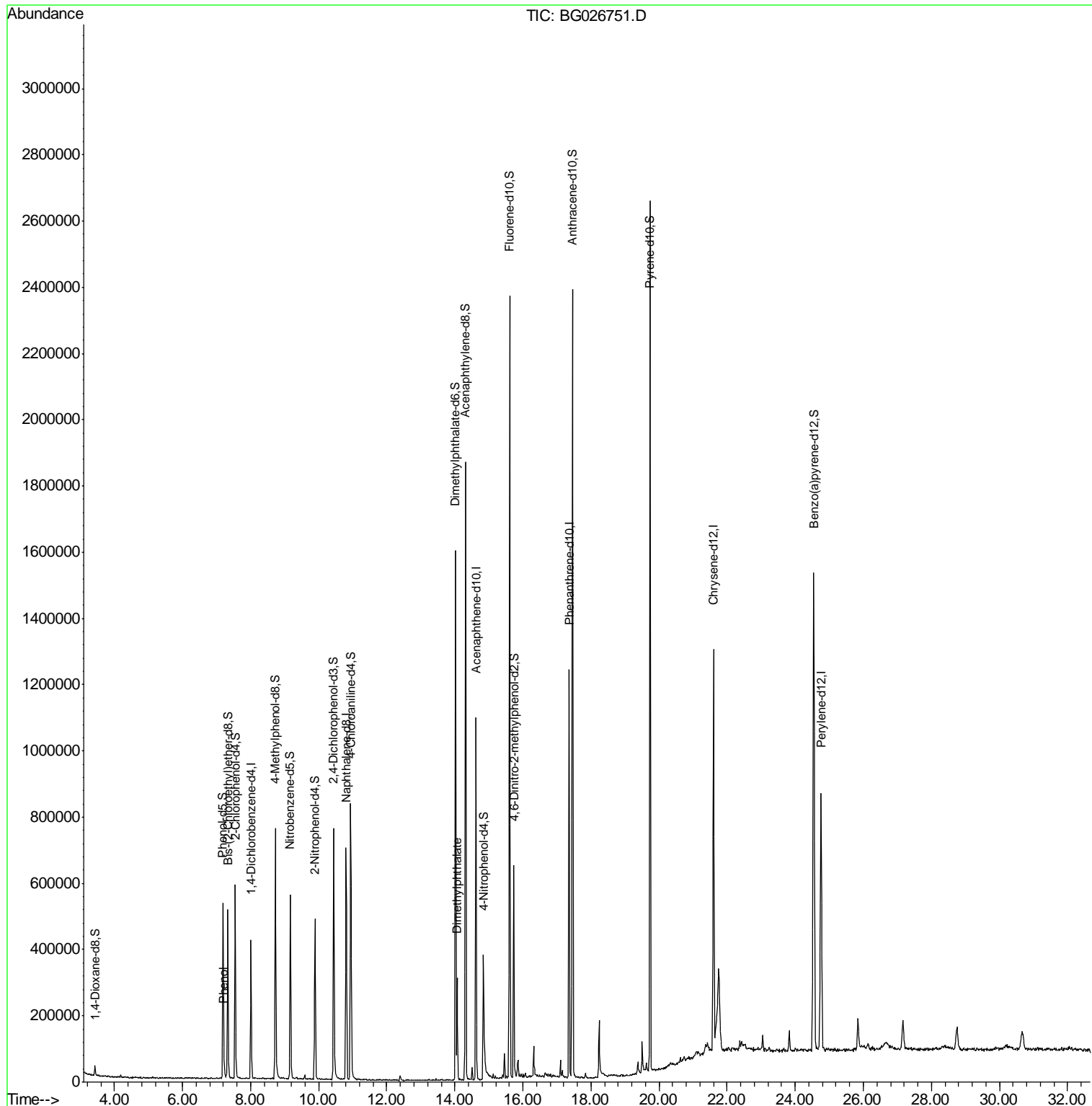
					Qvalue
6) Phenol	7.22	94	13226	1.15	ng/ul 97
44) Dimethylphthalate	14.07	163	208690	6.94	ng/ul 97

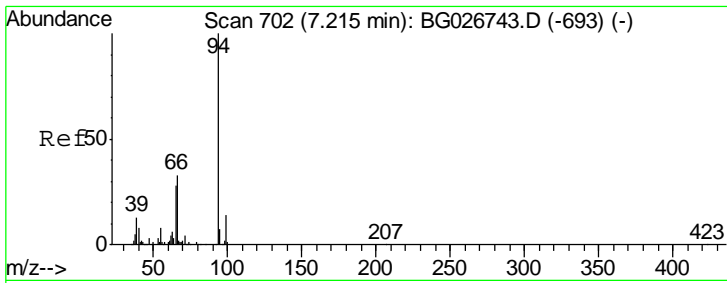
(#) = qualifier out of range (m) = manual integration (+) = signals summed

Data File : BG026751.D  
Acq On : 28 Apr 2017 17:45  
Operator : SJ/MA  
Sample : I2816-07  
Misc :  
ALS Vial : 10 Sample Multiplier: 1

Instrument :  
BNA\_G  
ClientSampleID :  
JHT19

Quant Time: Apr 29 00:39:53 2017  
Quant Method : Z:\HPCHEM1\BNA\_G\METHODS\SOM-EPA-BG042717.M  
Quant Title : SVOA CALIBRATION  
QLast Update : Sat Apr 29 00:39:01 2017  
Response via : Initial Calibration

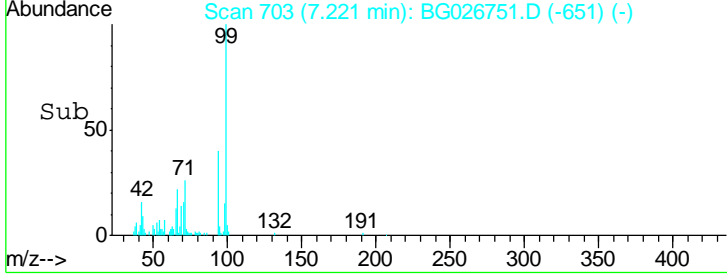
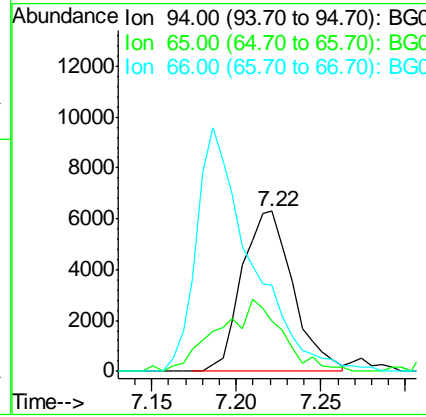
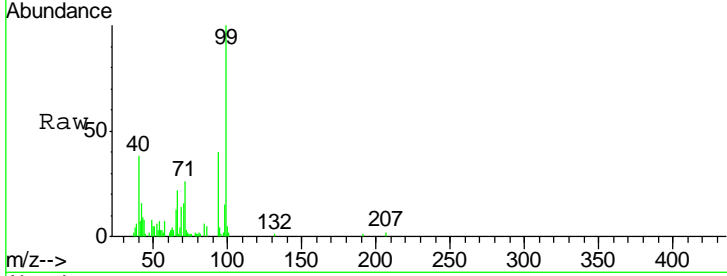




#6  
 Phenol  
 Concen: 1.15 ng/ul  
 RT: 7.22 min Scan# 703  
 Delta R.T. 0.01 min  
 Lab File: BG026751.D  
 Acq: 28 Apr 2017 17:45

**Instrument :**  
 BNA\_G  
**ClientSampled :**  
 JHT19

Tgt Ion	Resp	Lower	Upper
94	13226		
65	31.8	26.8	40.2
66	53.7	44.4	66.6



#44  
 Dimethylphthalate  
 Concen: 6.94 ng/ul  
 RT: 14.07 min Scan# 1868  
 Delta R.T. -0.01 min  
 Lab File: BG026751.D  
 Acq: 28 Apr 2017 17:45

Tgt Ion	Resp	Lower	Upper
163	208690		
194	3.6	3.4	5.0
164	10.1	9.0	13.4

