

Data Path : Z:\HPCHEM1\BNA G\DATA\BG042915\
 Data File : BG016808.D
 Acq On : 29 Apr 2015 20:40
 Operator : TP/IZ
 Sample : G2003-11
 Misc :
 ALS Vial : 17 Sample Multiplier: 1

Instrument :
 BNA_G
 ClientSampleId :
 PZ-2(59-60)

Quant Time: Apr 30 02:17:49 2015
 Quant Method : Z:\HPCHEM1\BNA G\METHODS\8270-BG042915.M
 Quant Title : ASP BNA STANDARDS FOR 5 POINT CALIBRATION
 QLast Update : Thu Apr 30 02:01:08 2015
 Response via : Initial Calibration

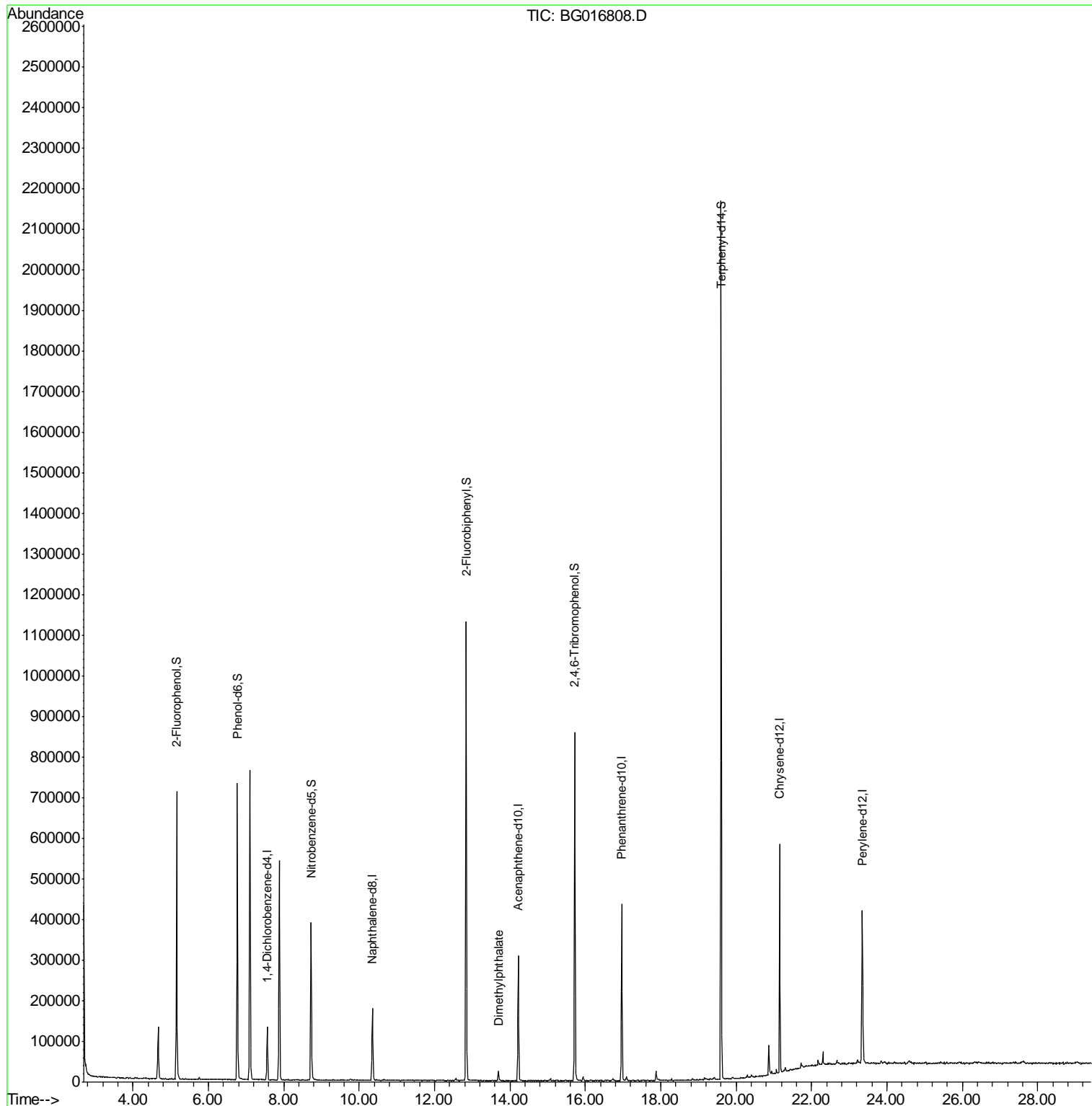
Internal Standards	R.T.	QIon	Response	Conc	Units	Dev(Min)
1) 1,4-Dichlorobenzene-d4	7.56	152	39500	20.00	ng	0.00
21) Naphthalene-d8	10.35	136	167857	20.00	ng	0.00
38) Acenaphthene-d10	14.22	164	103757	20.00	ng	0.00
63) Phenanthrene-d10	16.97	188	239297	20.00	ng	0.00
75) Chrysene-d12	21.15	240	229060	20.00	ng	0.00
86) Perylene-d12	23.35	264	216541	20.00	ng	0.00
System Monitoring Compounds						
5) 2-Fluorophenol	5.16	112	362180	168.90	ng	0.00
7) Phenol-d6	6.77	99	495072	164.48	ng	0.00
23) Nitrobenzene-d5	8.72	82	236270	91.69	ng	0.00
41) 2,4,6-Tribromophenol	15.72	330	125685	162.65	ng	0.00
44) 2-Fluorobiphenyl	12.84	172	569979	85.05	ng	0.00
78) Terphenyl-d14	19.60	244	772136	81.31	ng	0.00
Target Compounds						Qvalue
49) Dimethylphthalate	13.69	163	21965	2.95	ng	# 97

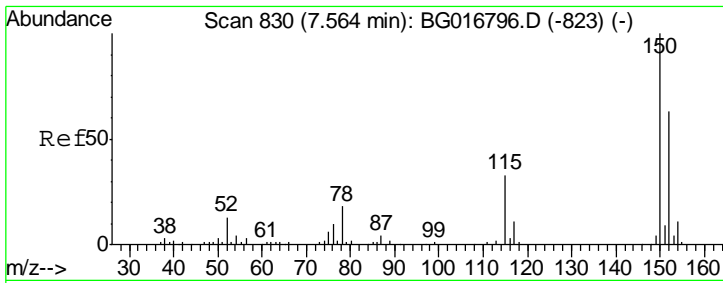
(#) = qualifier out of range (m) = manual integration (+) = signals summed

Data Path : Z:\HPCHEM1\BNA G\DATA\BG042915\
Data File : BG016808.D
Acq On : 29 Apr 2015 20:40
Operator : TP/IZ
Sample : G2003-11
Misc :
ALS Vial : 17 Sample Multiplier: 1

Instrument :
BNA_G
ClientSampled :
PZ-2(59-60)

Quant Time: Apr 30 02:17:49 2015
Quant Method : Z:\HPCHEM1\BNA G\METHODS\8270-BG042915.M
Quant Title : ASP BNA STANDARDS FOR 5 POINT CALIBRATION
QLast Update : Thu Apr 30 02:01:08 2015
Response via : Initial Calibration

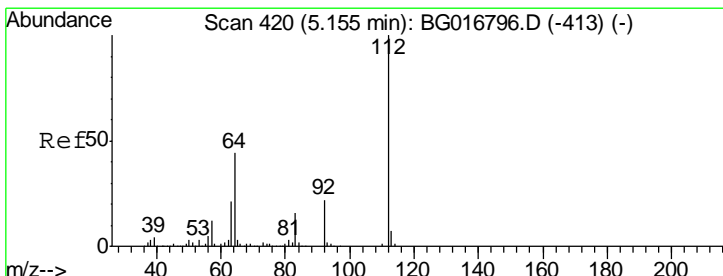
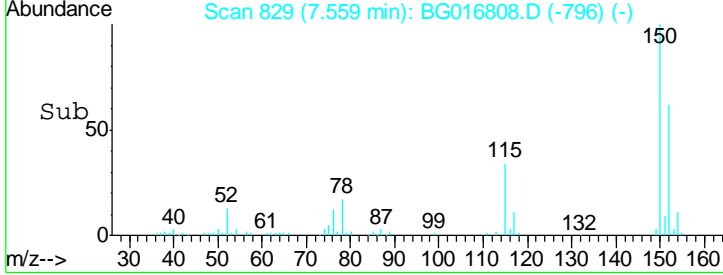
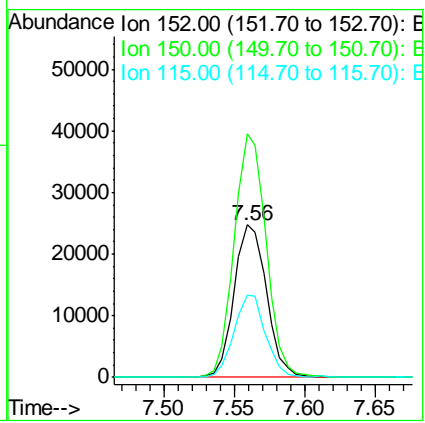
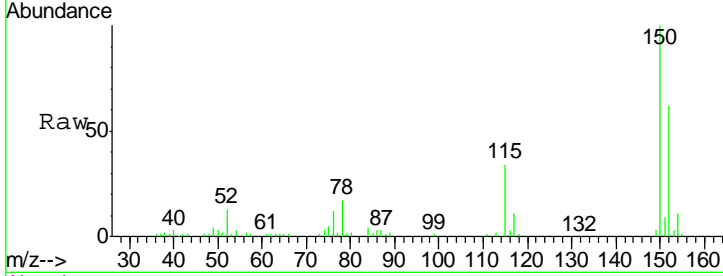




#1
 1,4-Dichlorobenzene-d4
 Concen: 20.00 ng
 RT: 7.56 min Scan# 829
 Delta R.T. -0.00 min
 Lab File: BG016808.D
 Acq: 29 Apr 2015 20:40

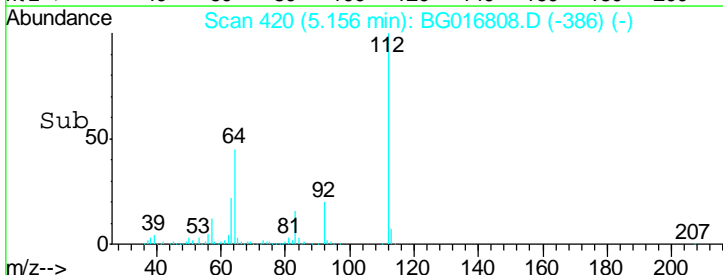
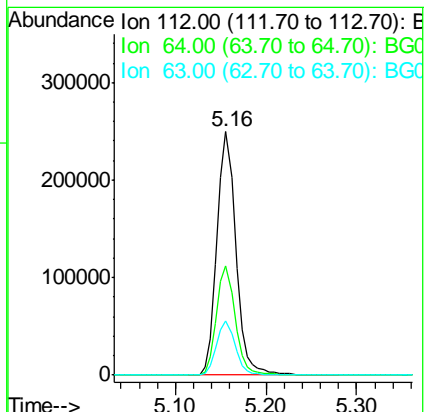
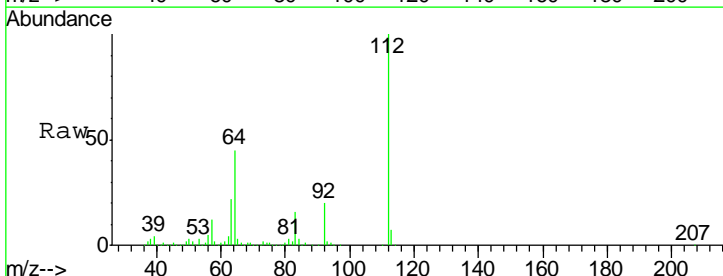
Instrument :
 BNA_G
ClientSampled :
 PZ-2(59-60)

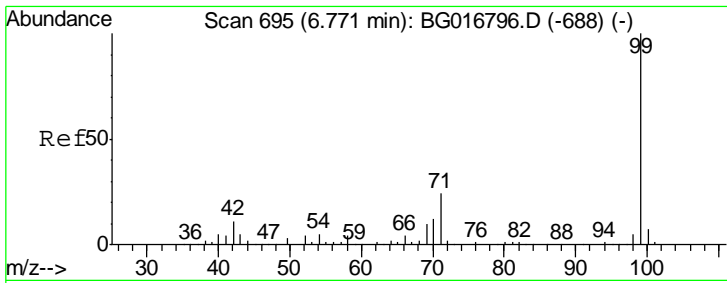
Tgt Ion	Resp	Lower	Upper
152	100		
150	160.0	126.2	189.4
115	54.1	41.1	61.7



#5
 2-Fluorophenol
 Concen: 168.90 ng
 RT: 5.16 min Scan# 420
 Delta R.T. 0.00 min
 Lab File: BG016808.D
 Acq: 29 Apr 2015 20:40

Tgt Ion	Resp	Lower	Upper
112	100		
64	45.0	35.5	53.3
63	22.5	17.2	25.8

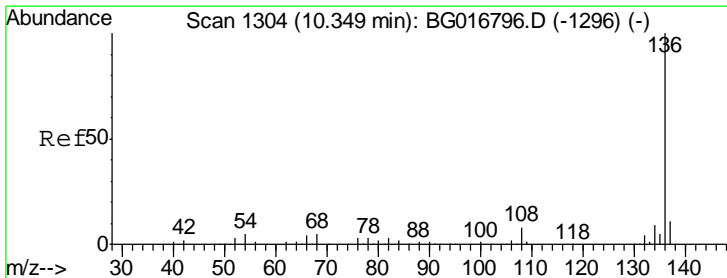
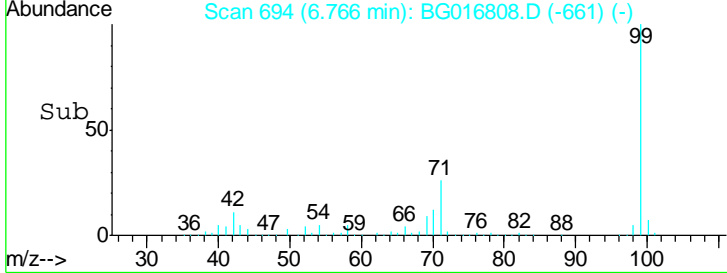
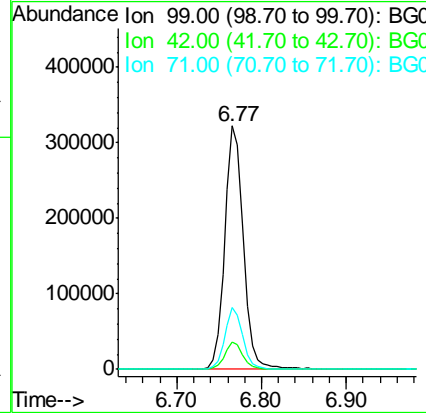
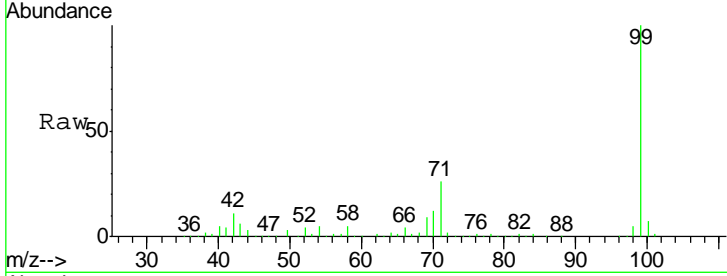




#7
 Phenol-d6
 Concen: 164.48 ng
 RT: 6.77 min Scan# 694
 Delta R.T. -0.00 min
 Lab File: BG016808.D
 Acq: 29 Apr 2015 20:40

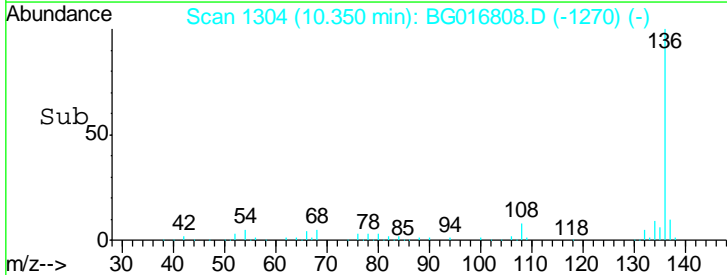
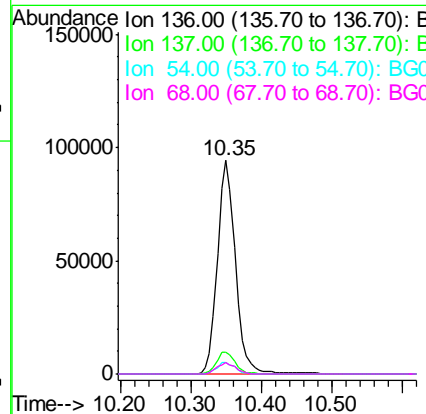
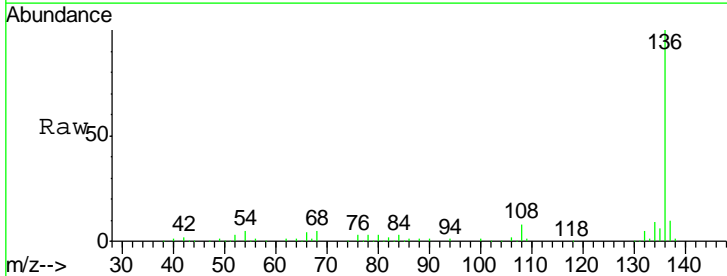
Instrument :
 BNA_G
ClientSampled :
 PZ-2(59-60)

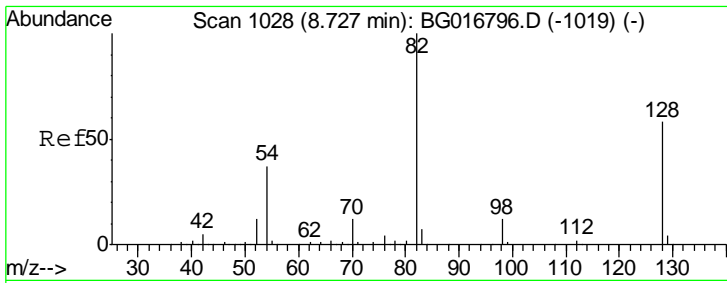
Tgt Ion	Resp	Lower	Upper
99	495072		
42	11.2	8.9	13.3
71	25.5	19.0	28.6



#21
 Naphthalene-d8
 Concen: 20.00 ng
 RT: 10.35 min Scan# 1304
 Delta R.T. 0.00 min
 Lab File: BG016808.D
 Acq: 29 Apr 2015 20:40

Tgt Ion	Resp	Lower	Upper
136	167857		
137	10.5	8.6	12.8
54	5.3	4.3	6.5
68	5.5	4.3	6.5

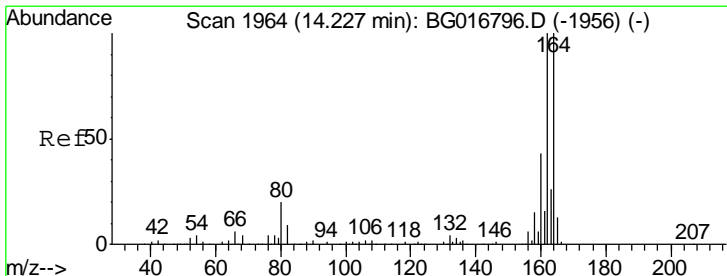
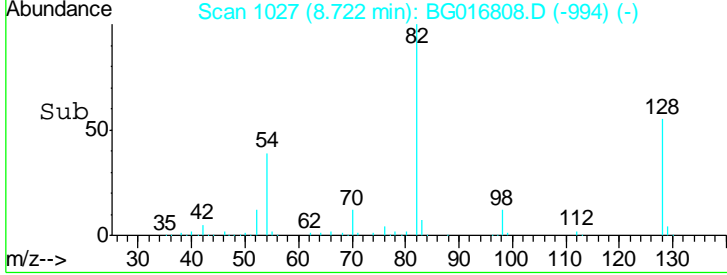
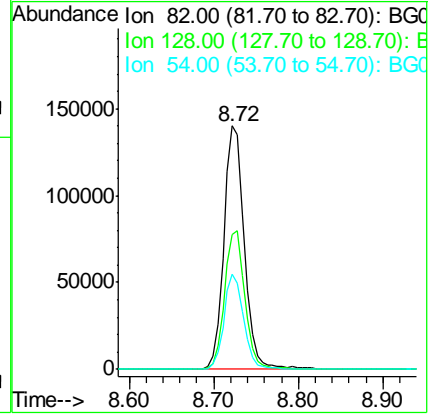
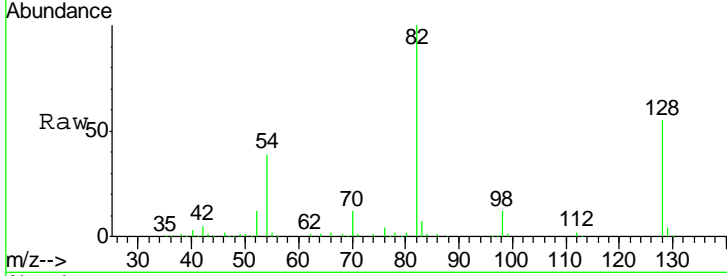




#23
 Nitrobenzene-d5
 Concen: 91.69 ng
 RT: 8.72 min Scan# 1027
 Delta R.T. -0.01 min
 Lab File: BG016808.D
 Acq: 29 Apr 2015 20:40

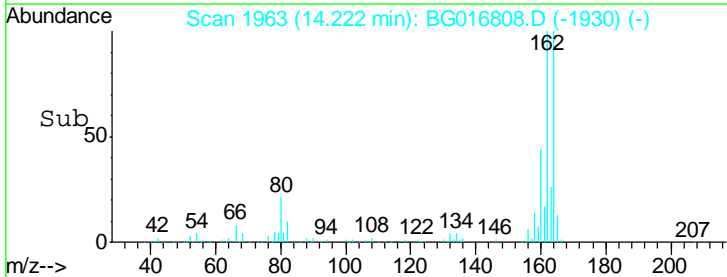
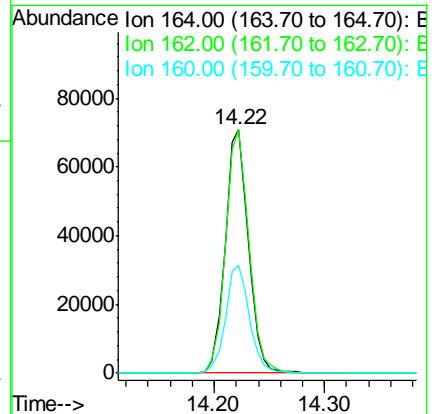
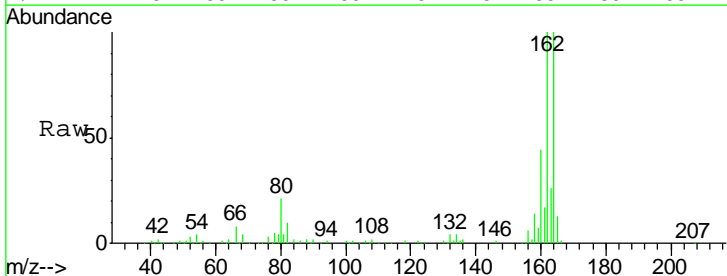
Instrument :
 BNA_G
 ClientSampled :
 PZ-2(59-60)

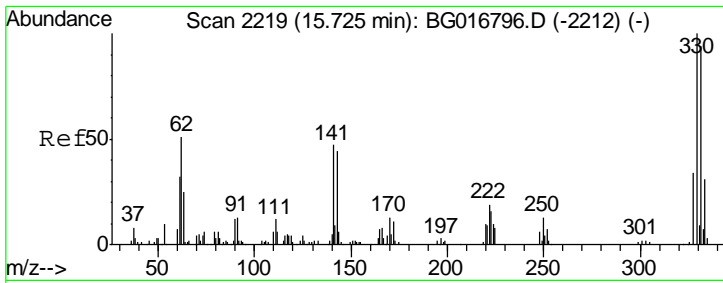
Tgt Ion	Resp	Lower	Upper
82	100		
128	55.3	46.3	69.5
54	38.9	30.0	45.0



#38
 Acenaphthene-d10
 Concen: 20.00 ng
 RT: 14.22 min Scan# 1963
 Delta R.T. -0.00 min
 Lab File: BG016808.D
 Acq: 29 Apr 2015 20:40

Tgt Ion	Resp	Lower	Upper
164	100		
162	100.2	80.2	120.4
160	44.3	34.8	52.2

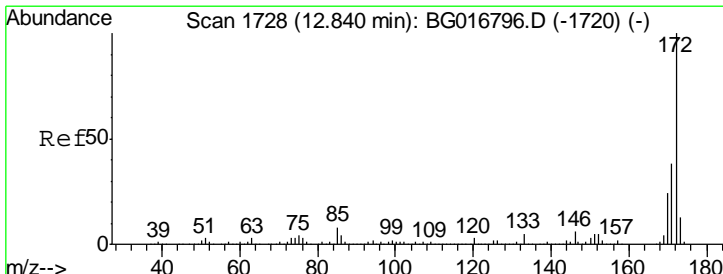
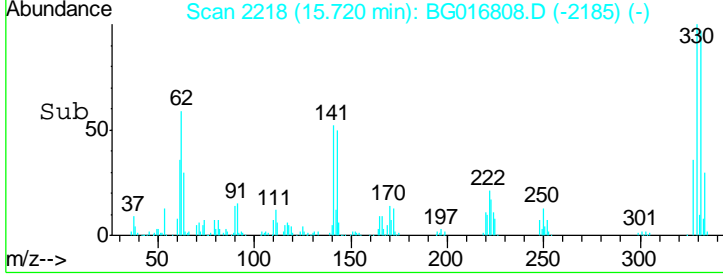
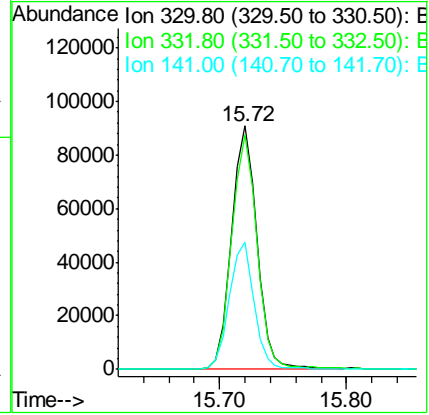
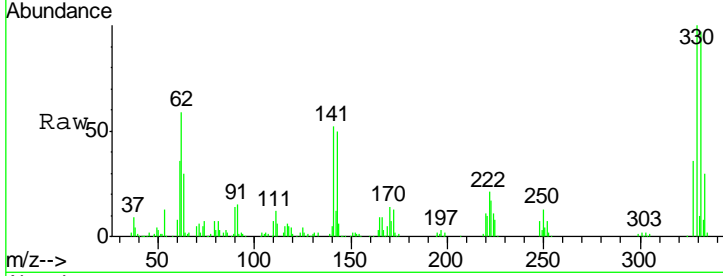




#41
 2,4,6-Tribromophenol
 Concen: 162.65 ng
 RT: 15.72 min Scan# 2218
 Delta R.T. -0.00 min
 Lab File: BG016808.D
 Acq: 29 Apr 2015 20:40

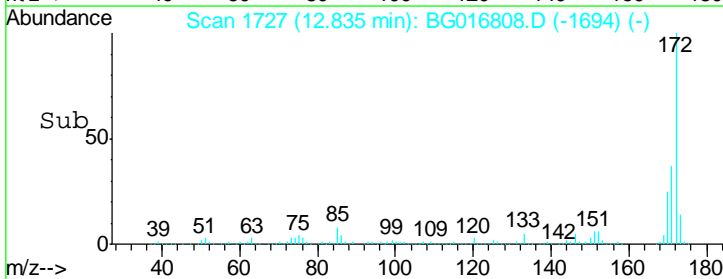
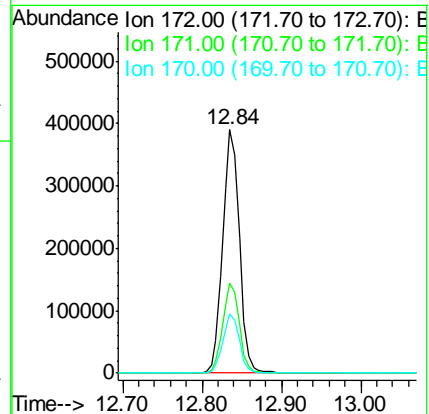
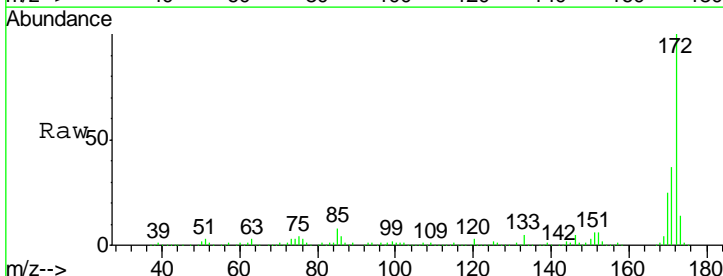
Instrument :
 BNA_G
 ClientSampleId :
 PZ-2(59-60)

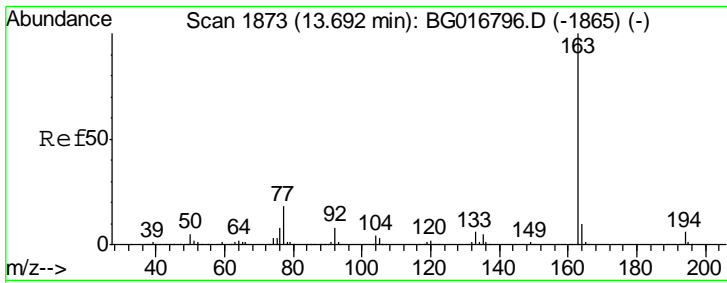
Tgt Ion	Resp	Lower	Upper
330	100		
332	97.0	75.3	112.9
141	51.1	40.7	61.1



#44
 2-Fluorobiphenyl
 Concen: 85.05 ng
 RT: 12.84 min Scan# 1727
 Delta R.T. -0.00 min
 Lab File: BG016808.D
 Acq: 29 Apr 2015 20:40

Tgt Ion	Resp	Lower	Upper
172	100		
171	36.8	30.2	45.4
170	24.6	19.4	29.0

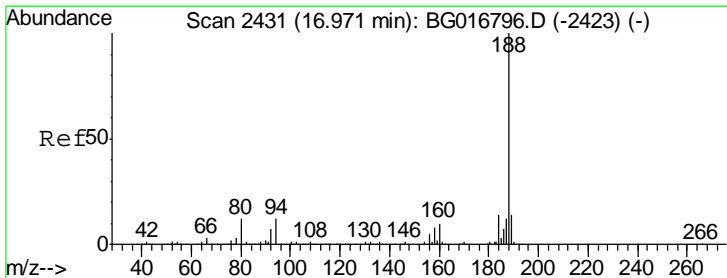
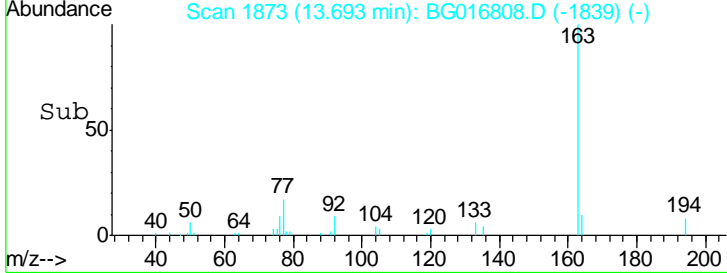
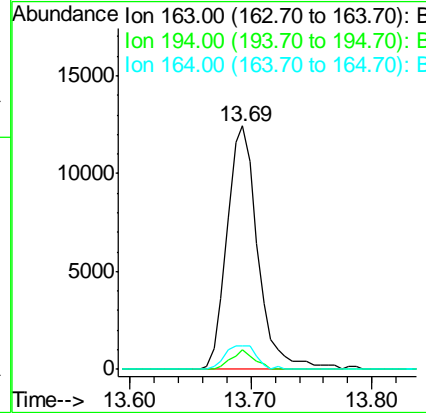
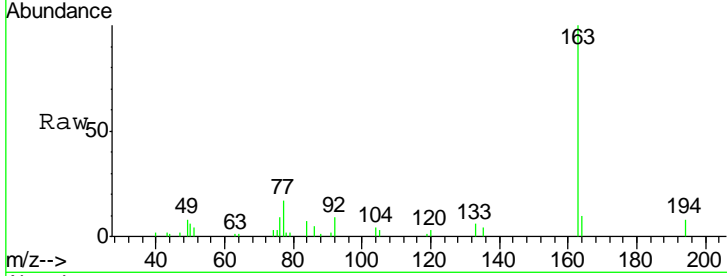




#49
 Dimethylphthalate
 Concen: 2.95 ng
 RT: 13.69 min Scan# 1873
 Delta R.T. 0.00 min
 Lab File: BG016808.D
 Acq: 29 Apr 2015 20:40

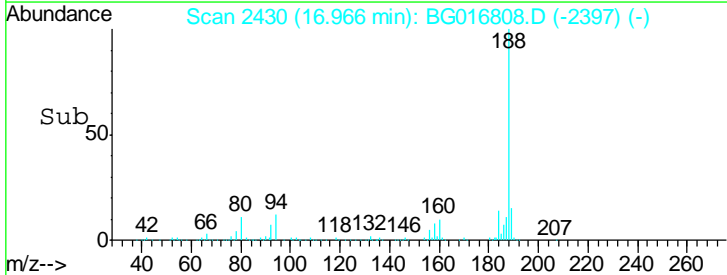
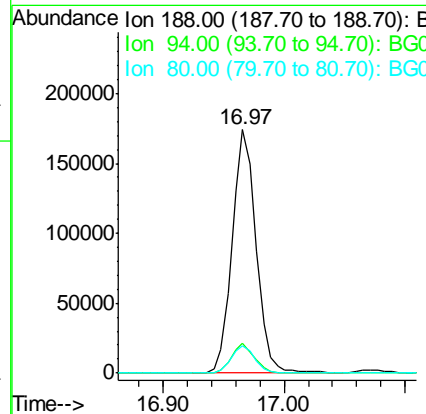
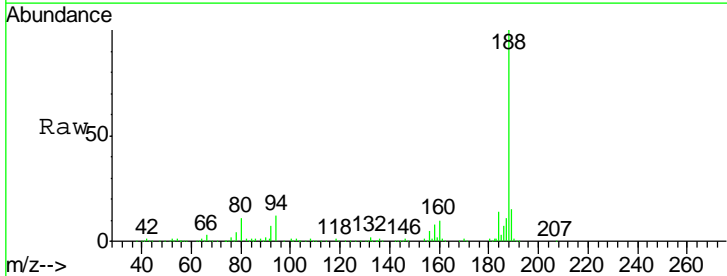
Instrument : BNA_G
 ClientSampled : PZ-2(59-60)

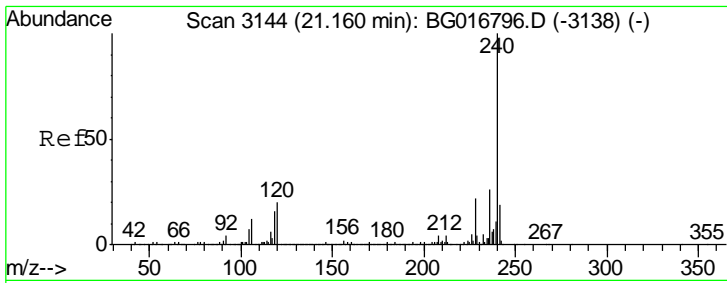
Tgt Ion	Resp	Lower	Upper
163	21965		
194	8.2	4.7	7.1#
164	9.7	8.2	12.2



#63
 Phenanthrene-d10
 Concen: 20.00 ng
 RT: 16.97 min Scan# 2430
 Delta R.T. -0.00 min
 Lab File: BG016808.D
 Acq: 29 Apr 2015 20:40

Tgt Ion	Resp	Lower	Upper
188	239297		
94	12.3	9.5	14.3
80	11.3	9.2	13.8

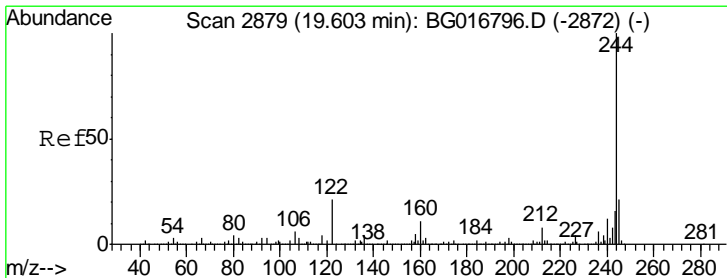
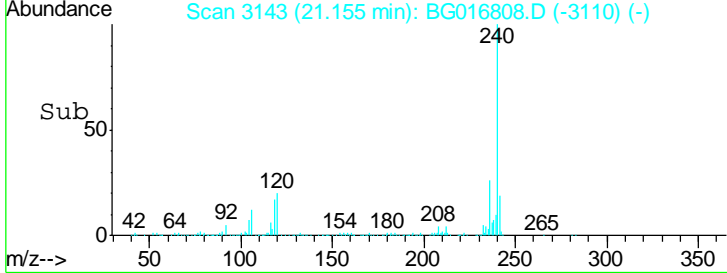
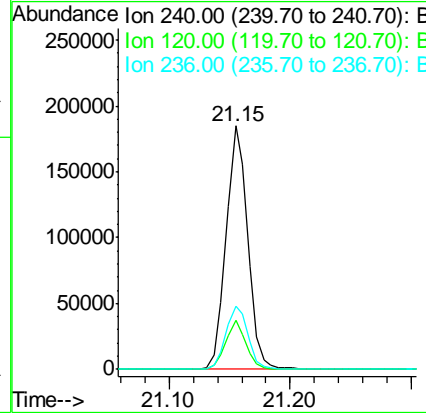
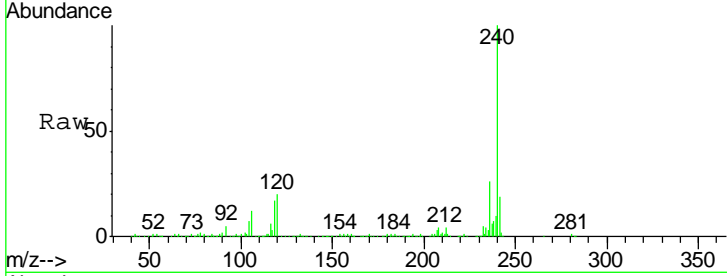




#75
 Chrysene-d12
 Concen: 20.00 ng
 RT: 21.15 min Scan# 3143
 Delta R.T. -0.00 min
 Lab File: BG016808.D
 Acq: 29 Apr 2015 20:40

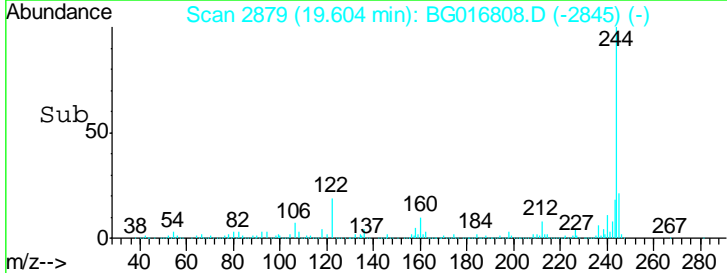
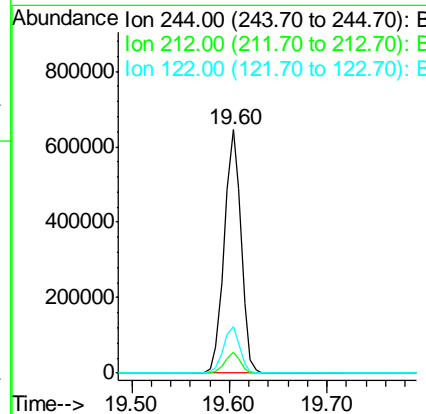
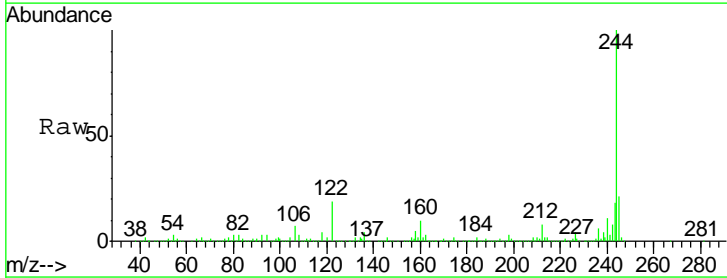
Instrument :
 BNA_G
ClientSampled :
 PZ-2(59-60)

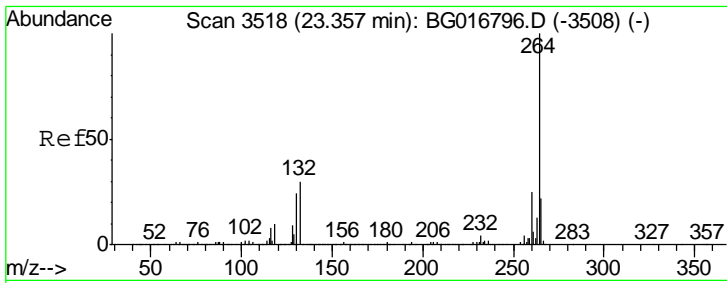
Tgt Ion	Resp	Lower	Upper
240	229060		
120	20.2	16.1	24.1
236	25.8	21.0	31.6



#78
 Terphenyl-d14
 Concen: 81.31 ng
 RT: 19.60 min Scan# 2879
 Delta R.T. 0.00 min
 Lab File: BG016808.D
 Acq: 29 Apr 2015 20:40

Tgt Ion	Resp	Lower	Upper
244	772136		
212	8.4	6.4	9.6
122	19.3	16.4	24.6





#86
 Perylene-d12
 Concen: 20.00 ng
 RT: 23.35 min Scan# 3517
 Delta R.T. -0.00 min
 Lab File: BG016808.D
 Acq: 29 Apr 2015 20:40

Instrument :
 BNA_G
 ClientSampled :
 PZ-2(59-60)

Tot Ion: 264 Resp: 216541

Ion	Ratio	Lower	Upper
264	100		
260	26.2	19.7	29.5
265	22.3	17.4	26.2

