

Data Path : Z:\HPCHEM1\BNA G\DATA\BG050218\
 Data File : BG034140.D
 Acq On : 3 May 2018 7:36
 Operator : SJ/JU
 Sample : J2652-24
 Misc :
 ALS Vial : 21 Sample Multiplier: 1

Instrument :
 BNA_G
 ClientSampleId :
 AMENDED-COMPOSITE-P5-WC

Quant Time: May 03 08:24:02 2018
 Quant Method : Z:\HPCHEM1\BNA G\METHODS\8270-BG050118.M
 Quant Title : ASP BNA STANDARDS FOR 5 POINT CALIBRATION
 QLast Update : Tue May 01 19:08:03 2018
 Response via : Initial Calibration

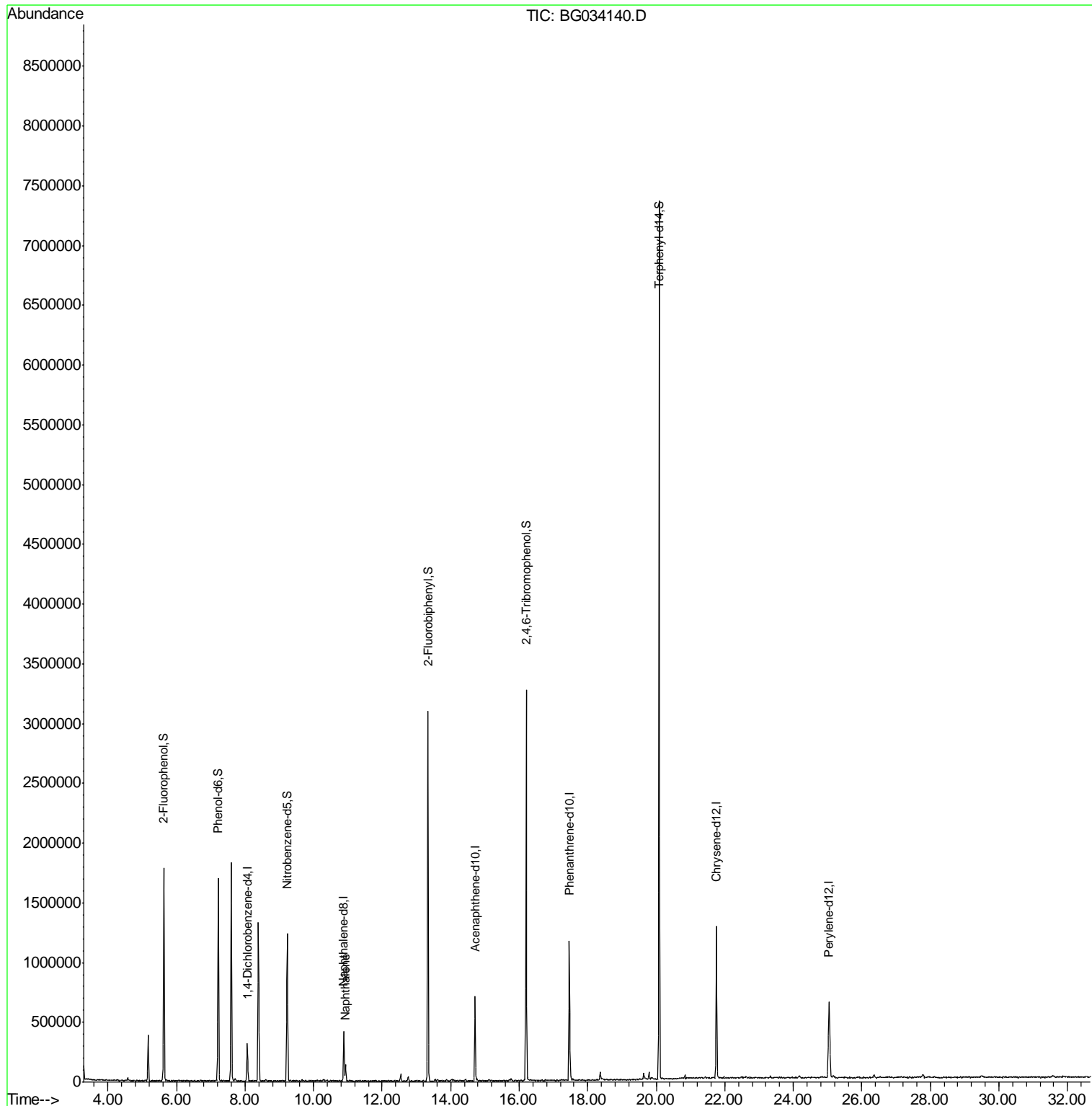
Internal Standards	R.T.	QIon	Response	Conc	Units	Dev(Min)
1) 1,4-Dichlorobenzene-d4	8.07	152	76896	20.00	ng	0.00
21) Naphthalene-d8	10.89	136	295492	20.00	ng	0.00
38) Acenaphthene-d10	14.71	164	235952	20.00	ng	-0.01
63) Phenanthrene-d10	17.47	188	683594	20.00	ng	0.00
75) Chrysene-d12	21.75	240	761051	20.00	ng	-0.01
86) Perylene-d12	25.05	264	752556	20.00	ng	-0.02
System Monitoring Compounds						
5) 2-Fluorophenol	5.63	112	615582	129.34	ng	0.00
7) Phenol-d6	7.22	99	818532	110.47	ng	0.00
23) Nitrobenzene-d5	9.23	82	740039	96.09	ng	0.00
41) 2,4,6-Tribromophenol	16.20	330	532693	163.04	ng	0.00
44) 2-Fluorobiphenyl	13.34	172	1530197	94.50	ng	0.00
78) Terphenyl-d14	20.09	244	3104148	89.35	ng	0.00
Target Compounds						Qvalue
31) Naphthalene	10.93	128	95303	6.136	ng	# 97

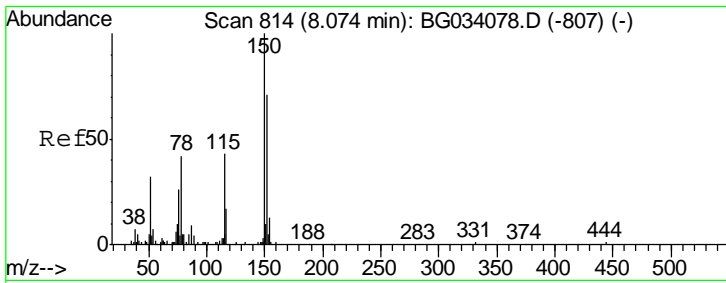
(#) = qualifier out of range (m) = manual integration (+) = signals summed

Data Path : Z:\HPCHEM1\BNA G\DATA\BG050218\
 Data File : BG034140.D
 Acq On : 3 May 2018 7:36
 Operator : SJ/JU
 Sample : J2652-24
 Misc :
 ALS Vial : 21 Sample Multiplier: 1

Instrument :
 BNA_G
ClientSampled :
 AMENDED-COMPOSITE-P5-WC

Quant Time: May 03 08:24:02 2018
 Quant Method : Z:\HPCHEM1\BNA G\METHODS\8270-BG050118.M
 Quant Title : ASP BNA STANDARDS FOR 5 POINT CALIBRATION
 QLast Update : Tue May 01 19:08:03 2018
 Response via : Initial Calibration

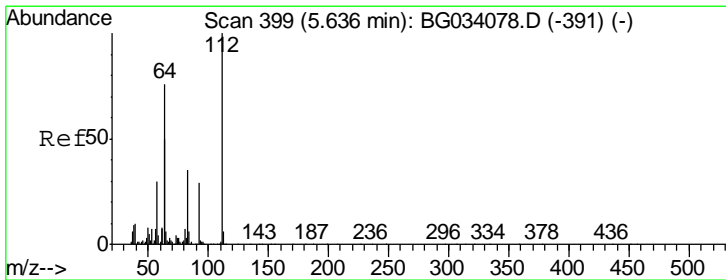
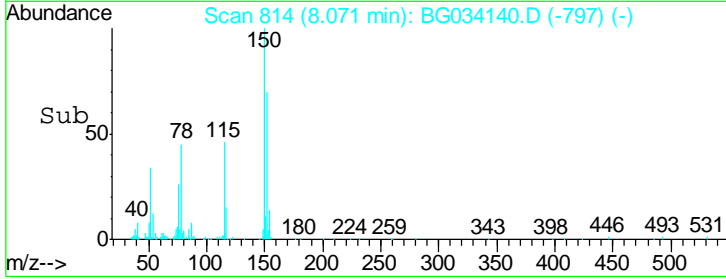
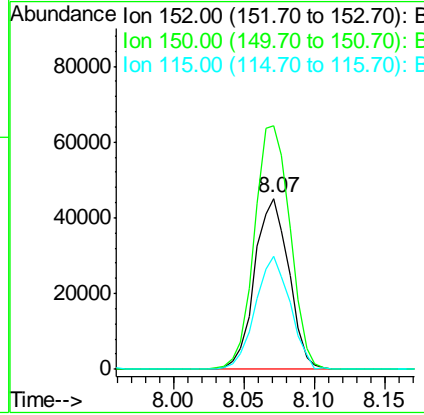
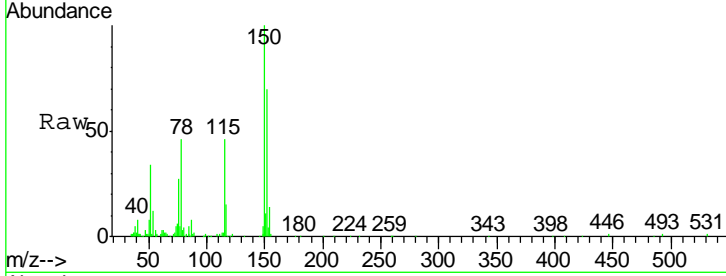




#1
 1,4-Dichlorobenzene-d4
 Concen: 20.000 ng
 RT: 8.07 min Scan# 814
 Delta R.T. -0.00 min
 Lab File: BG034140.D
 Acq: 3 May 2018 7:36

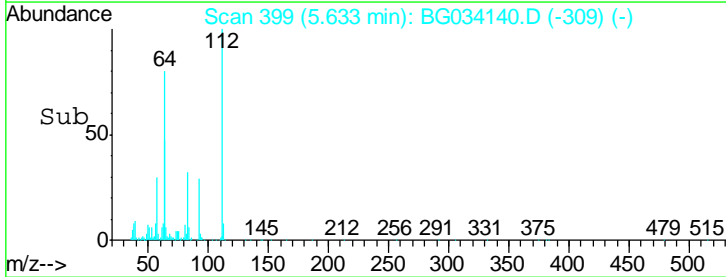
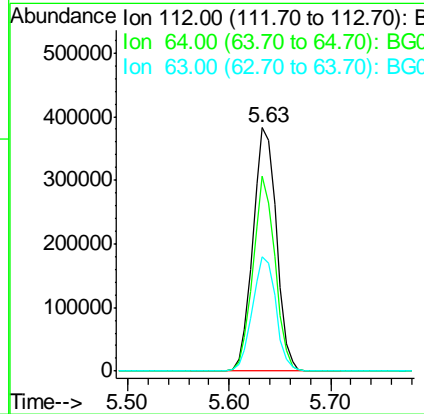
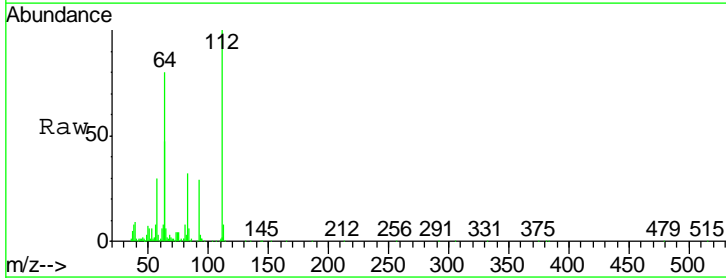
Instrument :
 BNA_G
ClientSampled :
 AMENDED-COMPOSITE-P5-WC

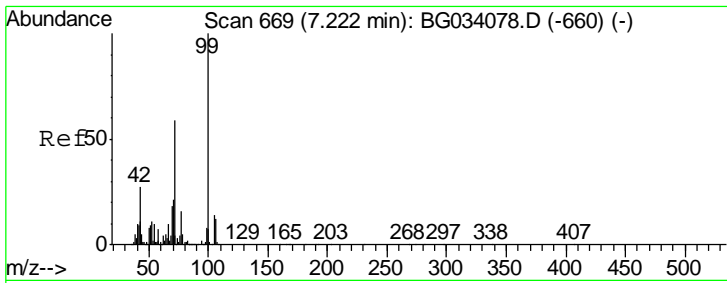
Tgt Ion	Resp	Lower	Upper
152	100		
150	142.2	126.6	189.8
115	65.8	53.0	79.4



#5
 2-Fluorophenol
 Concen: 129.337 ng
 RT: 5.63 min Scan# 399
 Delta R.T. -0.00 min
 Lab File: BG034140.D
 Acq: 3 May 2018 7:36

Tgt Ion	Resp	Lower	Upper
112	100		
64	80.2	56.3	84.5
63	47.1	30.1	45.1#

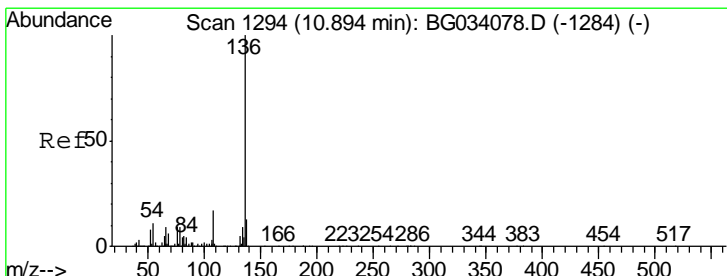
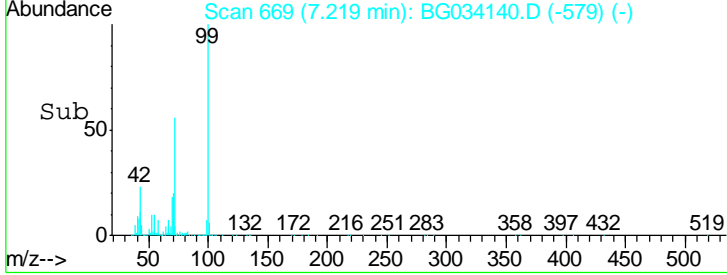
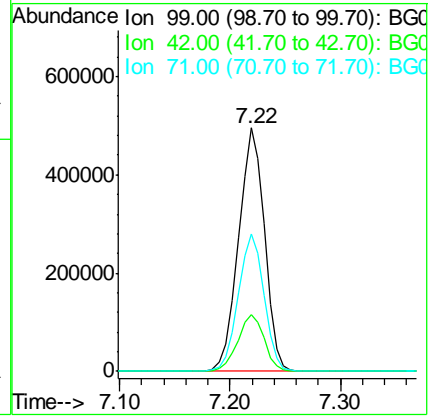
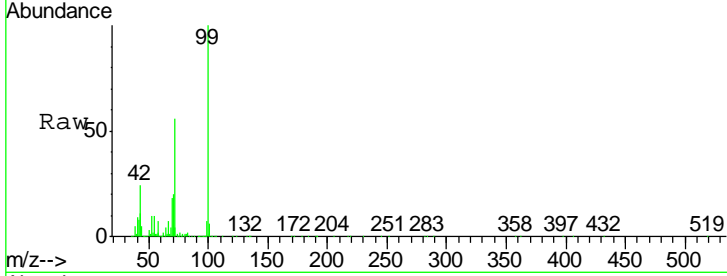




#7
 Phenol-d6
 Concen: 110.468 ng
 RT: 7.22 min Scan# 669
 Delta R.T. -0.00 min
 Lab File: BG034140.D
 Acq: 3 May 2018 7:36

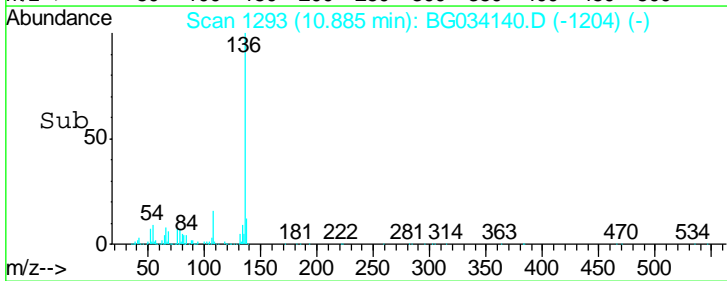
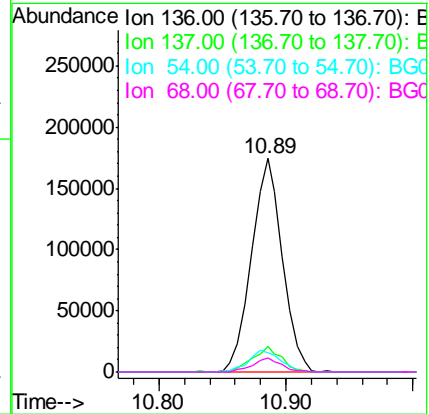
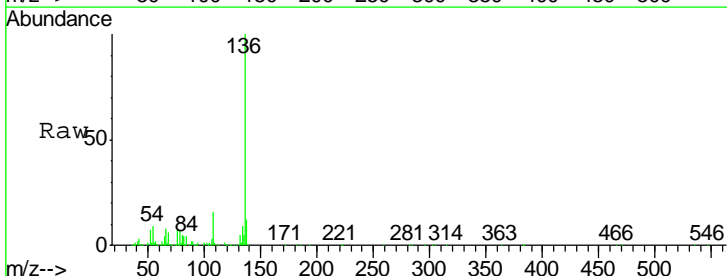
Instrument :
 BNA_G
ClientSampled :
 AMENDED-COMPOSITE-P5-WC

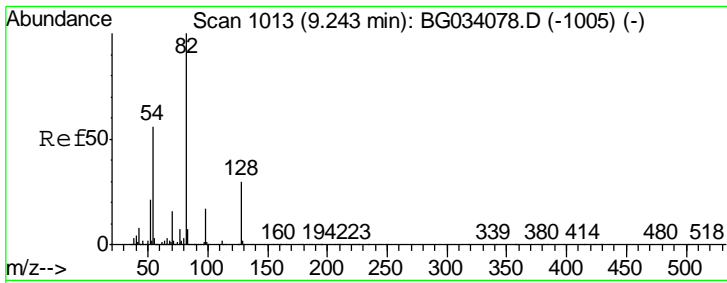
Tgt Ion	Resp	Lower	Upper
99	100		
42	23.5	14.1	21.1#
71	56.2	26.1	39.1#



#21
 Naphthalene-d8
 Concen: 20.000 ng
 RT: 10.89 min Scan# 1293
 Delta R.T. -0.01 min
 Lab File: BG034140.D
 Acq: 3 May 2018 7:36

Tgt Ion	Resp	Lower	Upper
136	100		
137	11.7	9.2	13.8
54	8.7	10.3	15.5#
68	6.4	4.5	6.7

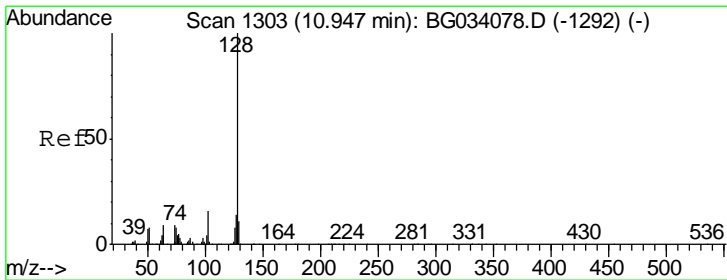
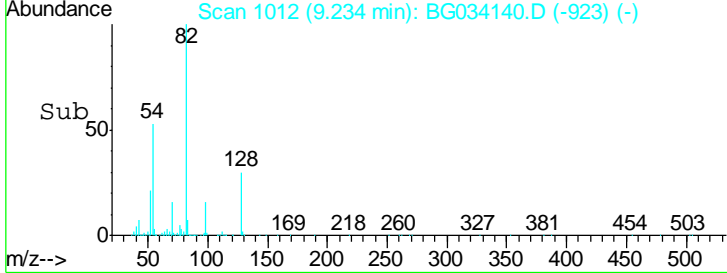
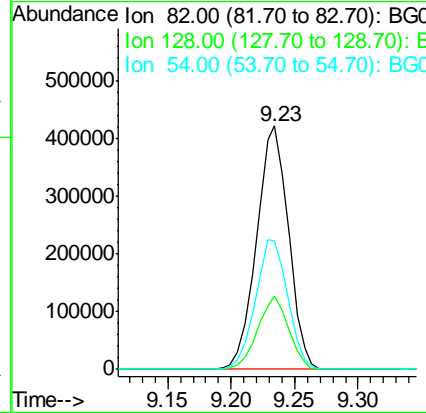
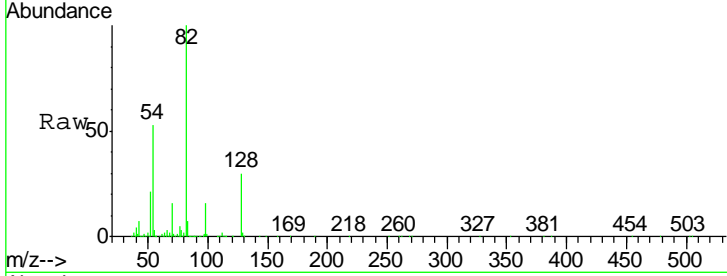




#23
 Nitrobenzene-d5
 Concen: 96.090 ng
 RT: 9.23 min Scan# 1012
 Delta R.T. -0.01 min
 Lab File: BG034140.D
 Acq: 3 May 2018 7:36

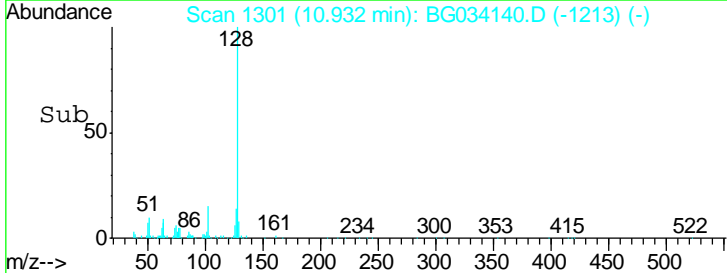
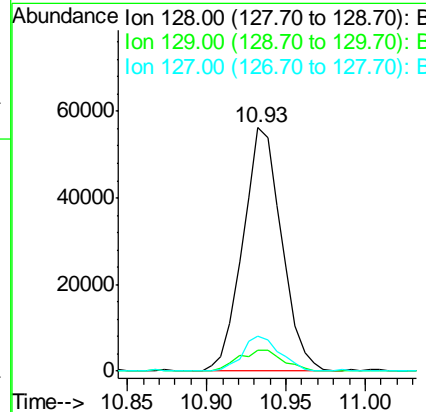
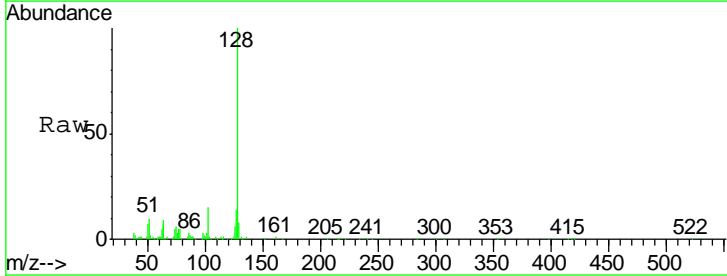
Instrument :
 BNA_G
ClientSampled :
 AMENDED-COMPOSITE-P5-WC

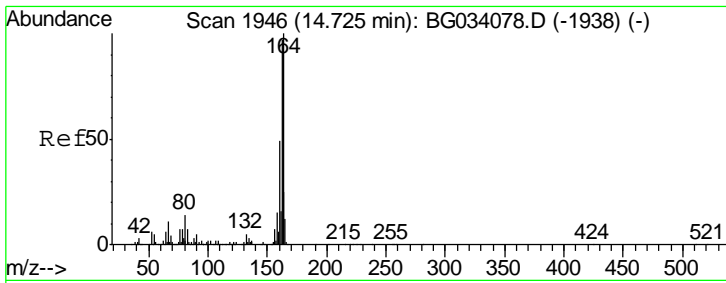
Tgt Ion	Resp	Lower	Upper
82	740039		
128	30.1	29.7	44.5
54	52.8	43.1	64.7



#31
 Naphthalene
 Concen: 6.136 ng
 RT: 10.93 min Scan# 1301
 Delta R.T. -0.01 min
 Lab File: BG034140.D
 Acq: 3 May 2018 7:36

Tgt Ion	Resp	Lower	Upper
128	95303		
129	8.4	8.6	12.8#
127	14.1	11.6	17.4

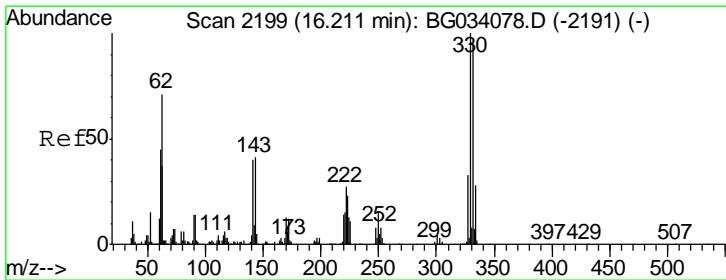
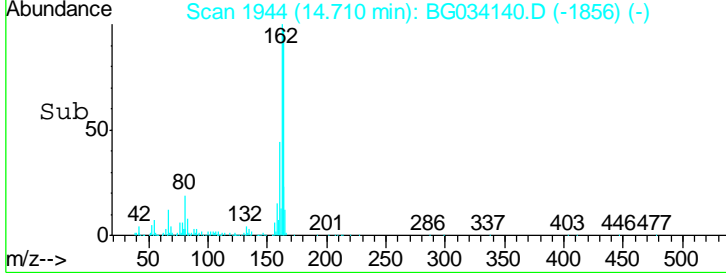
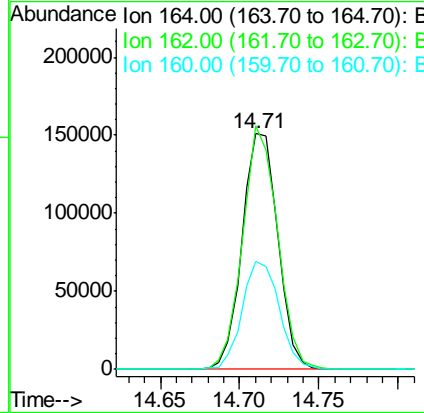
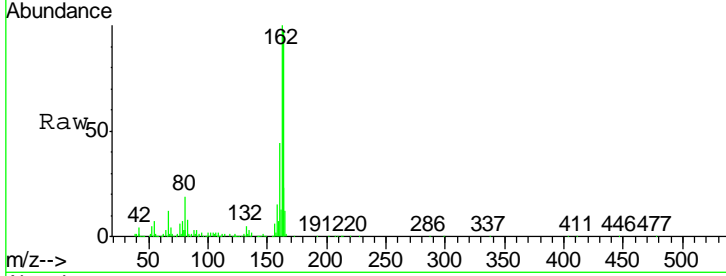




#38
 Acenaphthene-d10
 Concen: 20.000 ng
 RT: 14.71 min Scan# 1944
 Delta R.T. -0.01 min
 Lab File: BG034140.D
 Acq: 3 May 2018 7:36

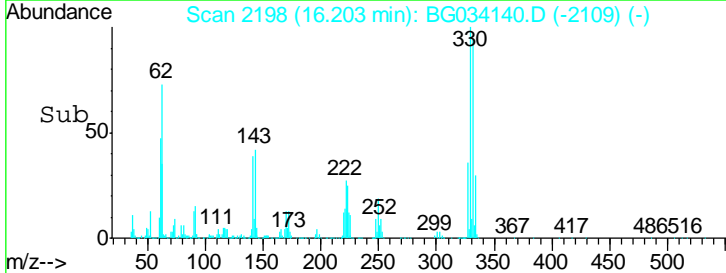
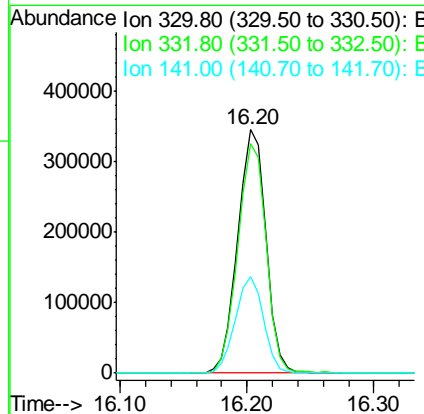
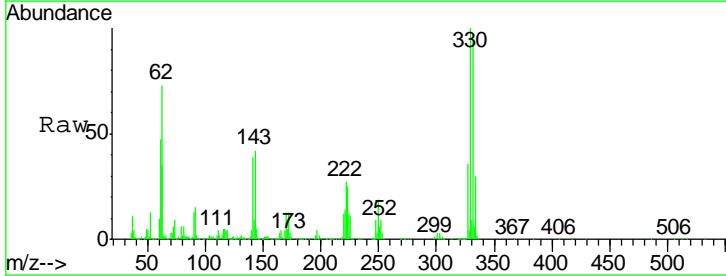
Instrument :
 BNA_G
ClientSampleId :
 AMENDED-COMPOSITE-P5-WC

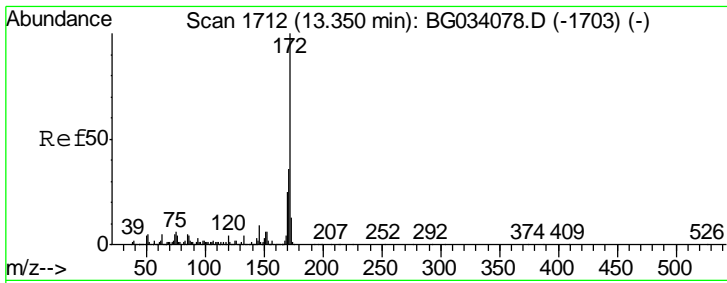
Tgt Ion	Resp	Lower	Upper
164	100		
162	103.3	78.8	118.2
160	45.9	35.4	53.0



#41
 2,4,6-Tribromophenol
 Concen: 163.040 ng
 RT: 16.20 min Scan# 2198
 Delta R.T. -0.01 min
 Lab File: BG034140.D
 Acq: 3 May 2018 7:36

Tgt Ion	Resp	Lower	Upper
330	100		
332	94.4	77.0	115.6
141	39.8	25.2	37.8#



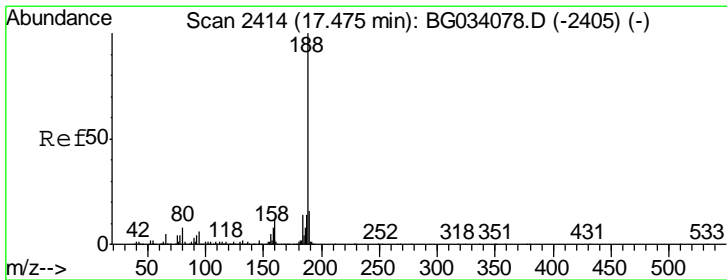
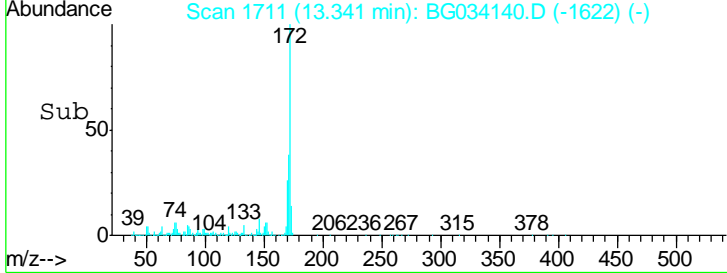
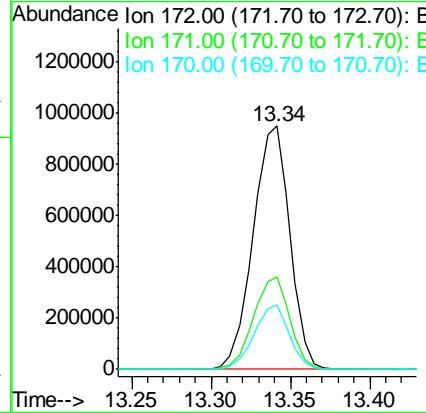
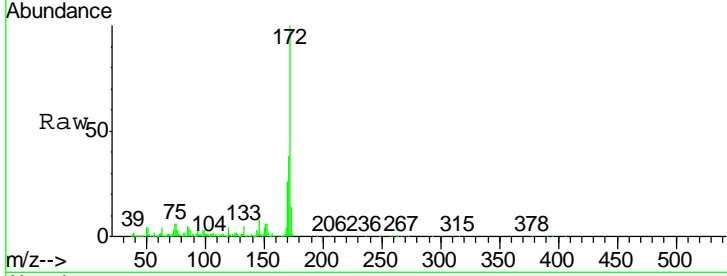


#44
 2-Fluorobiphenyl
 Concen: 94.499 ng
 RT: 13.34 min Scan# 1711
 Delta R.T. -0.01 min
 Lab File: BG034140.D
 Acq: 3 May 2018 7:36

Instrument :
 BNA_G
ClientSampled :
 AMENDED-COMPOSITE-P5-WC

Tgt Ion:172 Resp: 1530197

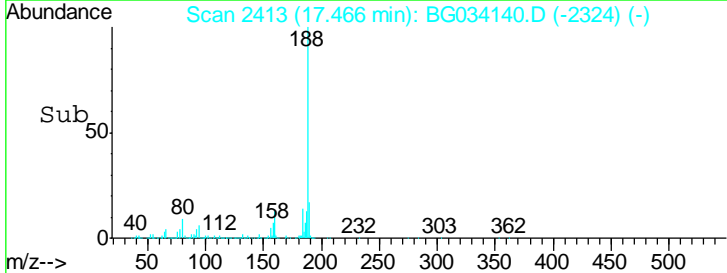
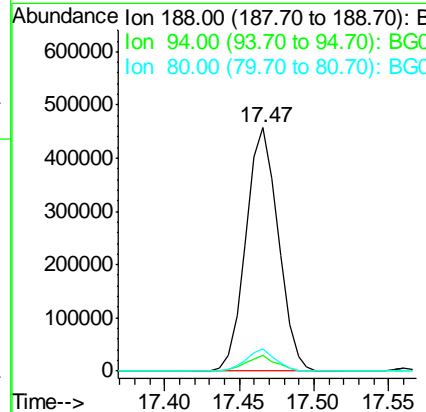
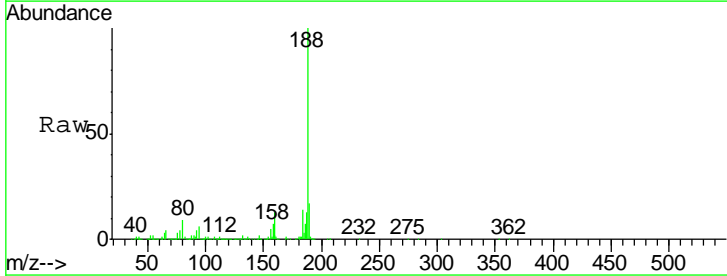
Ion	Ratio	Lower	Upper
172	100		
171	38.3	30.0	45.0
170	26.3	19.5	29.3

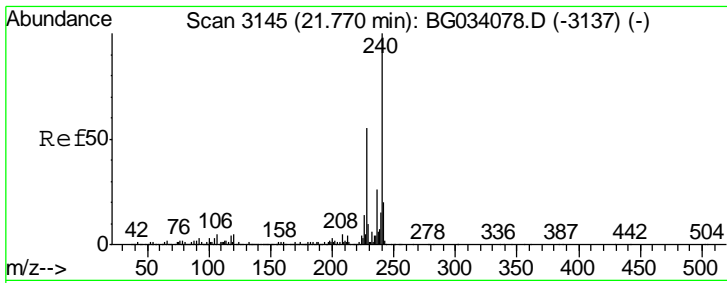


#63
 Phenanthrene-d10
 Concen: 20.000 ng
 RT: 17.47 min Scan# 2413
 Delta R.T. -0.01 min
 Lab File: BG034140.D
 Acq: 3 May 2018 7:36

Tgt Ion:188 Resp: 683594

Ion	Ratio	Lower	Upper
188	100		
94	6.4	6.9	10.3#
80	9.4	7.7	11.5

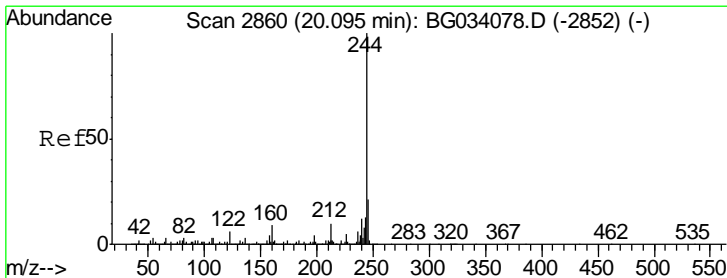
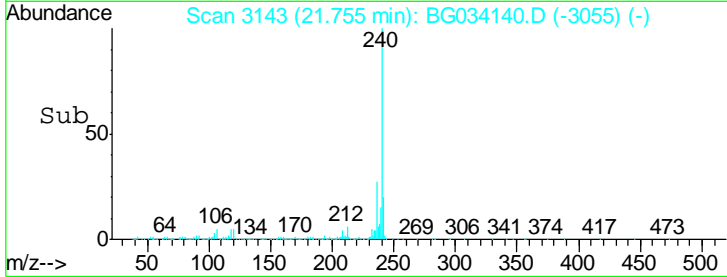
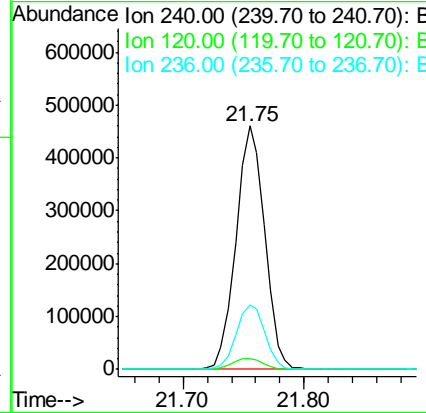
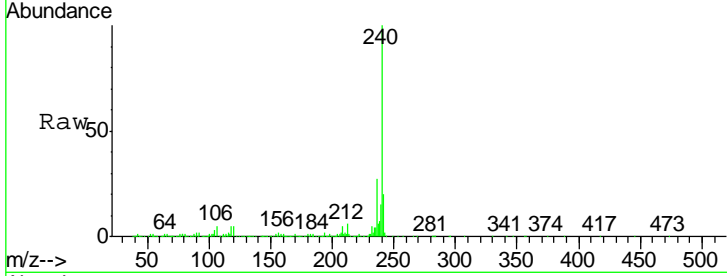




#75
 Chrysene-d12
 Concen: 20.000 ng
 RT: 21.75 min Scan# 3143
 Delta R.T. -0.01 min
 Lab File: BG034140.D
 Acq: 3 May 2018 7:36

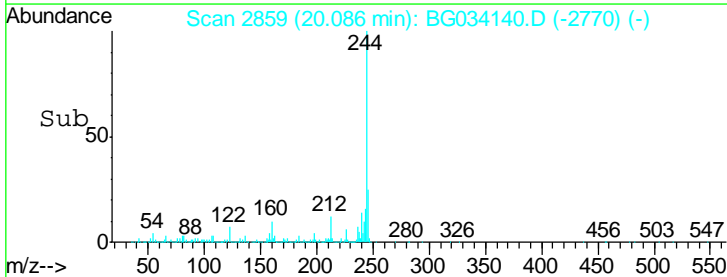
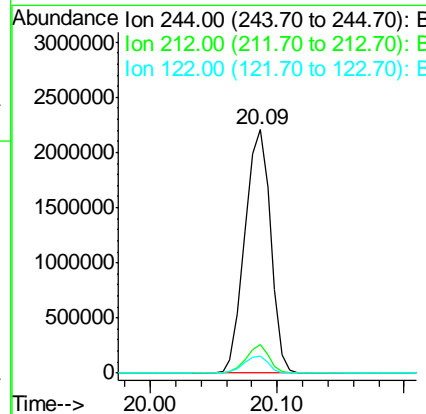
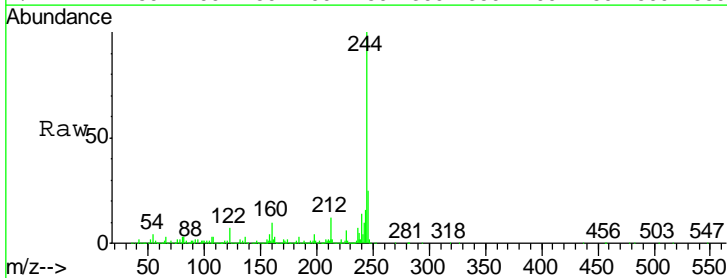
Instrument :
 BNA_G
ClientSampleId :
 AMENDED-COMPOSITE-P5-WC

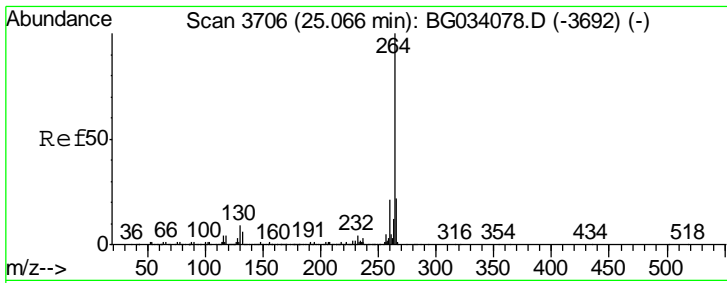
Tgt Ion	Ratio	Lower	Upper
240	100		
120	4.6	6.8	10.2#
236	26.5	20.9	31.3



#78
 Terphenyl-d14
 Concen: 89.352 ng
 RT: 20.09 min Scan# 2859
 Delta R.T. -0.01 min
 Lab File: BG034140.D
 Acq: 3 May 2018 7:36

Tgt Ion	Ratio	Lower	Upper
244	100		
212	11.8	5.8	8.8#
122	7.0	7.0	10.4





#86
 Perylene-d12
 Concen: 20.000 ng
 RT: 25.05 min Scan# 3703
 Delta R.T. -0.02 min
 Lab File: BG034140.D
 Acq: 3 May 2018 7:36

Instrument :
 BNA_G
 ClientSampleId :
 AMENDED-COMPOSITE-P5-WC

Tot Ion: 264 Resp: 752556

Ion	Ratio	Lower	Upper
264	100		
260	24.6	17.4	26.0
265	21.1	17.7	26.5

