

Data Path : Z:\svoasrv\HPCHEM1\BNA\_G\Data\BG050222\  
 Data File : BG053409.D  
 Acq On : 2 May 2022 21:30  
 Operator : CG/JU  
 Sample : N2619-16  
 Misc :  
 ALS Vial : 18 Sample Multiplier: 1

Instrument :  
 BNA\_G  
 ClientSampleId :  
 SB07-13-14-FT

Quant Time: May 03 06:44:03 2022  
 Quant Method : Z:\svoasrv\HPCHEM1\BNA\_G\Methods\8270-BG040822.M  
 Quant Title : ASP BNA STANDARDS FOR 5 POINT CALIBRATION  
 QLast Update : Sun Apr 24 01:13:30 2022  
 Response via : Initial Calibration

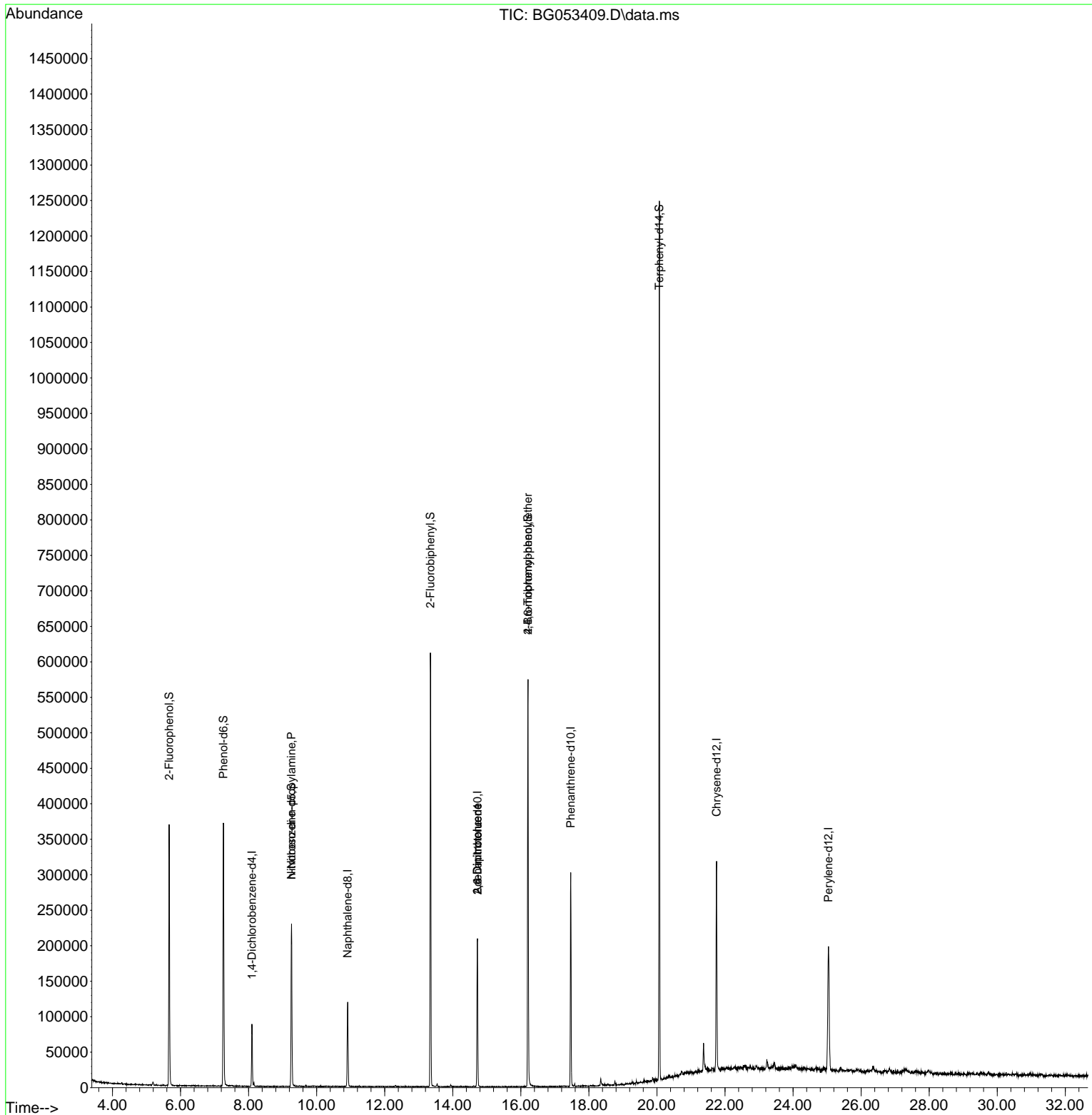
Compound	R.T.	QIon	Response	Conc	Units	Dev(Min)
Internal Standards						
1) 1,4-Dichlorobenzene-d4	8.099	152	24319	20.000	ng	-0.01
21) Naphthalene-d8	10.913	136	100270	20.000	ng	# 0.00
39) Acenaphthene-d10	14.726	164	78254	20.000	ng	0.00
64) Phenanthrene-d10	17.469	188	195598	20.000	ng	-0.01
76) Chrysene-d12	21.752	240	193815	20.000	ng	-0.01
86) Perylene-d12	25.041	264	200088	20.000	ng	-0.02
System Monitoring Compounds						
5) 2-Fluorophenol	5.667	112	149626	105.467	ng	0.00
7) Phenol-d6	7.259	99	223075	101.964	ng	-0.01
23) Nitrobenzene-d5	9.263	82	150132	60.795	ng	-0.01
42) 2,4,6-Tribromophenol	16.212	330	118808	95.429	ng	-0.01
45) 2-Fluorobiphenyl	13.345	172	330666	58.266	ng	-0.01
79) Terphenyl-d14	20.071	244	634374	55.279	ng	-0.01
Target Compounds						
19) n-Nitroso-di-n-propyla...	9.263	70	22101	13.799	ng	# 77
51) 2,6-Dinitrotoluene	14.726	165	10370	7.942	ng	# 25
57) 2,4-Dinitrotoluene	14.726	165	10370	5.578	ng	# 24
67) 4-Bromophenyl-phenylether	16.212	248	7673	3.061	ng	# 1

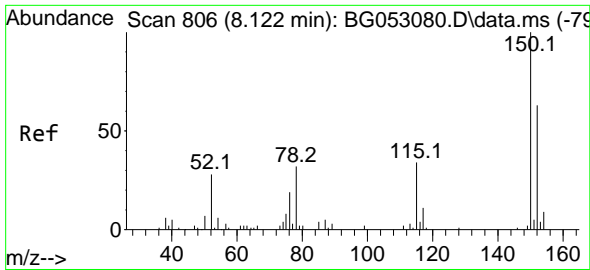
(#) = qualifier out of range (m) = manual integration (+) = signals summed

Data Path : Z:\svoasrv\HPCHEM1\BNA\_G\Data\BG050222\  
 Data File : BG053409.D  
 Acq On : 2 May 2022 21:30  
 Operator : CG/JU  
 Sample : N2619-16  
 Misc :  
 ALS Vial : 18 Sample Multiplier: 1

Instrument :  
 BNA\_G  
 ClientSampleId :  
 SB07-13-14-FT

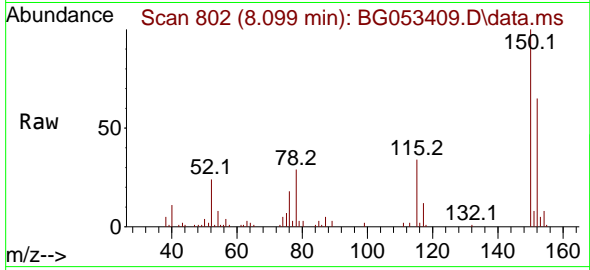
Quant Time: May 03 06:44:03 2022  
 Quant Method : Z:\svoasrv\HPCHEM1\BNA\_G\Methods\8270-BG040822.M  
 Quant Title : ASP BNA STANDARDS FOR 5 POINT CALIBRATION  
 QLast Update : Sun Apr 24 01:13:30 2022  
 Response via : Initial Calibration



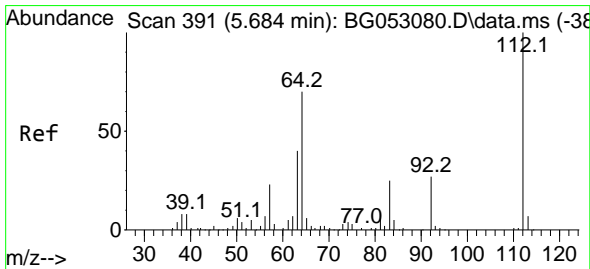
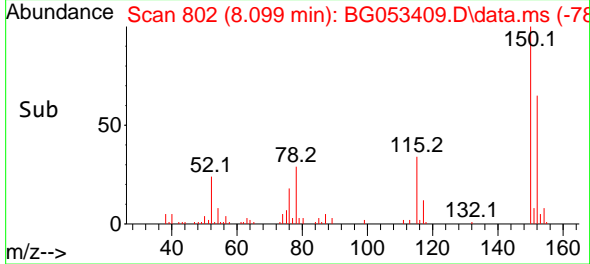
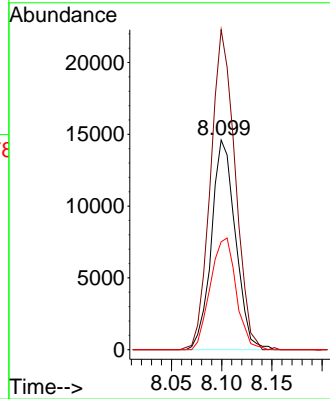


#1  
 1,4-Dichlorobenzene-d4  
 Concen: 20.000 ng  
 RT: 8.099 min Scan# 80  
 Delta R.T. -0.014 min  
 Lab File: BG053409.D  
 Acq: 2 May 2022 21:30

Instrument :  
 BNA\_G  
 ClientSampleId :  
 SB07-13-14-FT

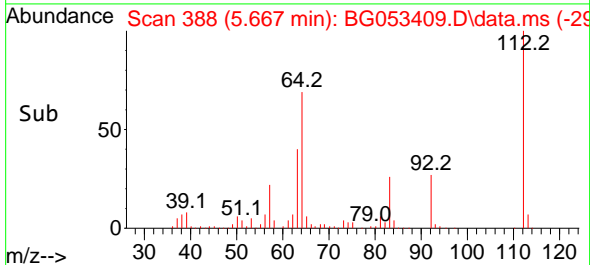
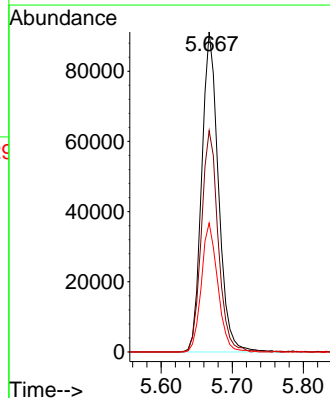
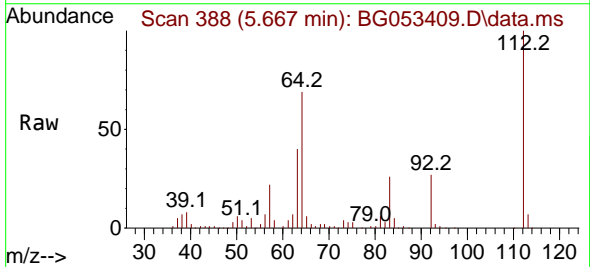


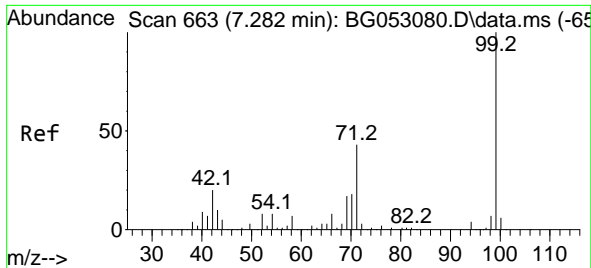
Tgt Ion:152 Resp: 24319  
 Ion Ratio Lower Upper  
 152 100  
 150 152.7 114.6 172.0  
 115 51.4 45.9 68.9



#5  
 2-Fluorophenol  
 Concen: 105.467 ng  
 RT: 5.667 min Scan# 388  
 Delta R.T. -0.008 min  
 Lab File: BG053409.D  
 Acq: 2 May 2022 21:30

Tgt Ion:112 Resp: 149626  
 Ion Ratio Lower Upper  
 112 100  
 64 69.1 48.0 72.0  
 63 40.3 26.5 39.7#

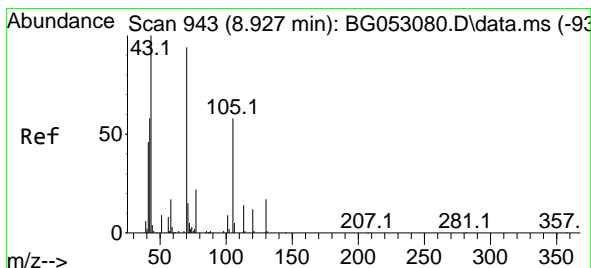
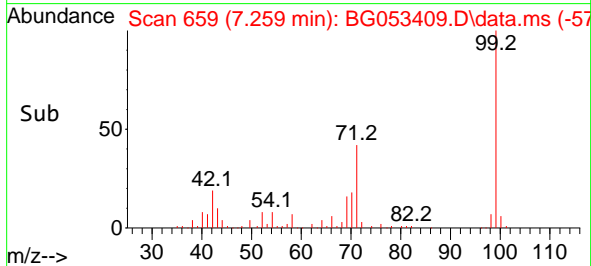
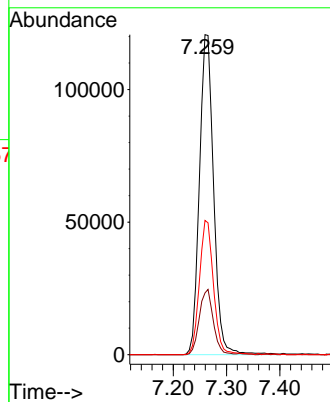
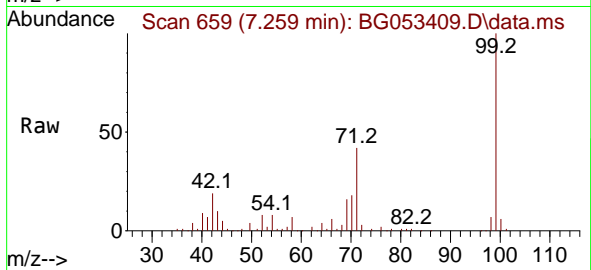




#7  
 Phenol-d6  
 Concen: 101.964 ng  
 RT: 7.259 min Scan# 61  
 Delta R.T. -0.014 min  
 Lab File: BG053409.D  
 Acq: 2 May 2022 21:30

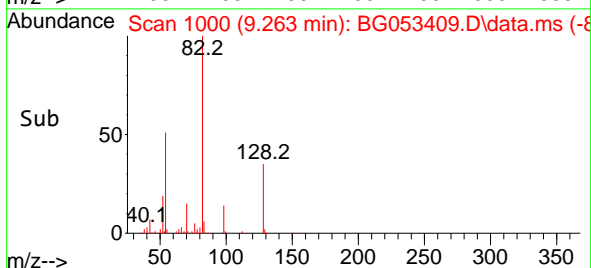
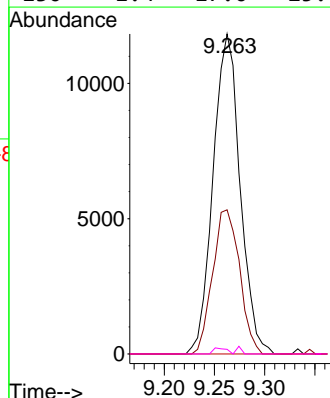
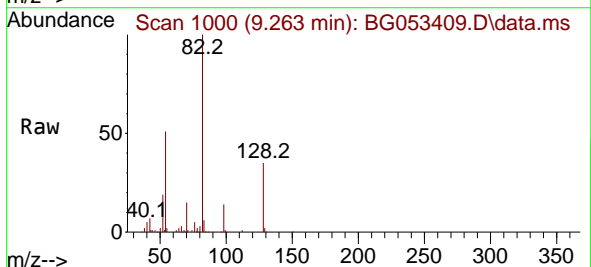
Instrument :  
 BNA\_G  
 ClientSampleId :  
 SB07-13-14-FT

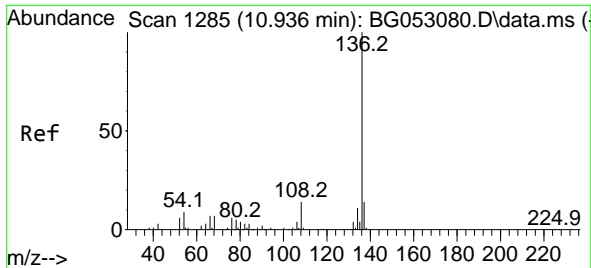
Tgt Ion	Resp	Lower	Upper
99	223075		
42	19.3	14.7	22.1
71	41.9	29.2	43.8



#19  
 n-Nitroso-di-n-propylamine  
 Concen: 13.799 ng  
 RT: 9.263 min Scan# 1000  
 Delta R.T. 0.350 min  
 Lab File: BG053409.D  
 Acq: 2 May 2022 21:30

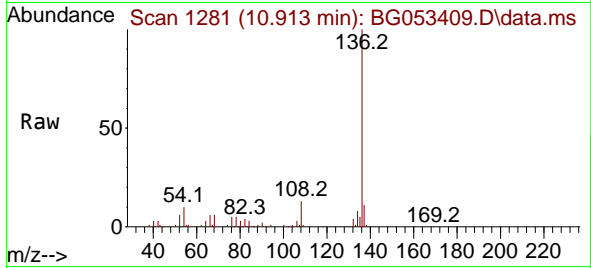
Tgt Ion	Resp	Lower	Upper
70	22101		
42	45.1	46.0	69.0#
101	0.0	6.2	9.4#
130	1.4	17.0	25.4#



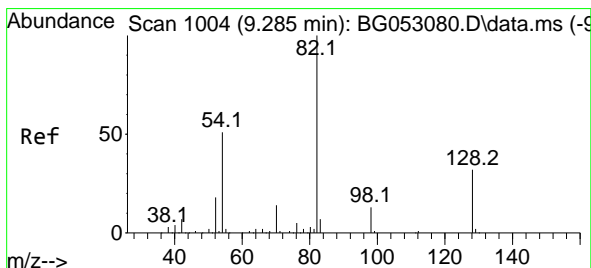
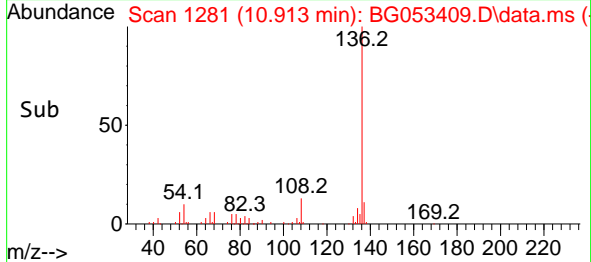
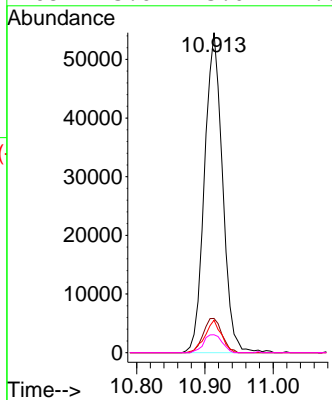


#21  
 Naphthalene-d8  
 Concen: 20.000 ng  
 RT: 10.913 min Scan# 11  
 Delta R.T. -0.008 min  
 Lab File: BG053409.D  
 Acq: 2 May 2022 21:30

Instrument :  
 BNA\_G  
 ClientSampleId :  
 SB07-13-14-FT

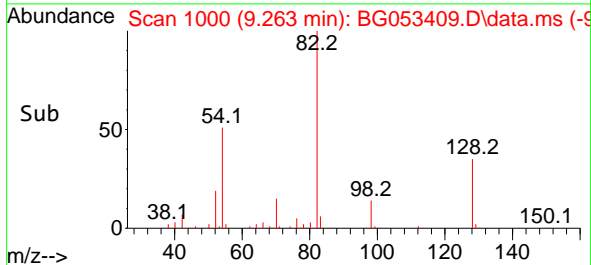
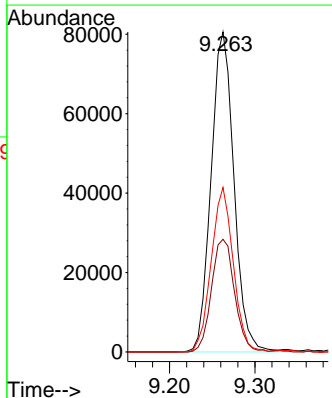
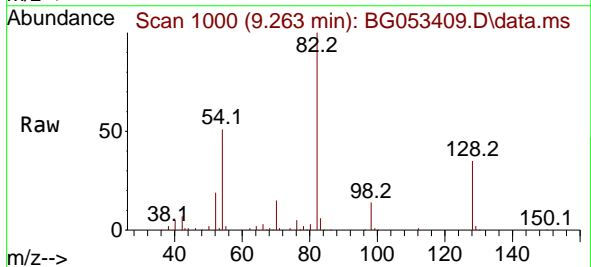


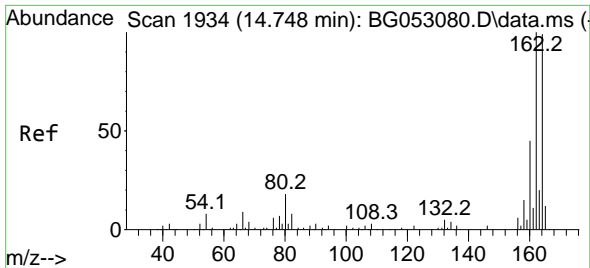
Tgt Ion:136 Resp: 100270  
 Ion Ratio Lower Upper  
 136 100  
 137 10.7 9.4 14.2  
 54 10.1 6.4 9.6#  
 68 5.6 5.0 7.6



#23  
 Nitrobenzene-d5  
 Concen: 60.795 ng  
 RT: 9.263 min Scan# 1000  
 Delta R.T. -0.014 min  
 Lab File: BG053409.D  
 Acq: 2 May 2022 21:30

Tgt Ion: 82 Resp: 150132  
 Ion Ratio Lower Upper  
 82 100  
 128 35.2 31.3 46.9  
 54 51.4 37.8 56.8





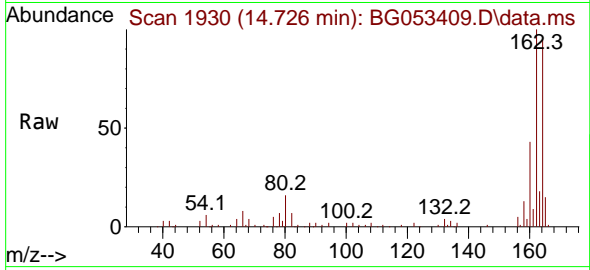
#39  
 Acenaphthene-d10  
 Concen: 20.000 ng  
 RT: 14.726 min Scan# 1930  
 Delta R.T. -0.008 min  
 Lab File: BG053409.D  
 Acq: 2 May 2022 21:30

Instrument :

BNA\_G

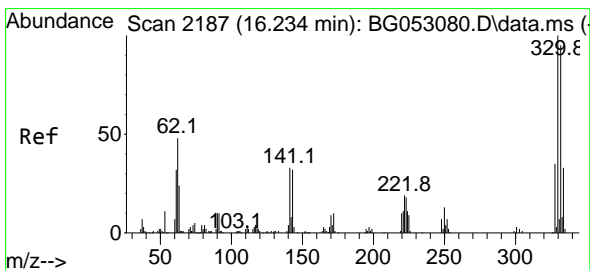
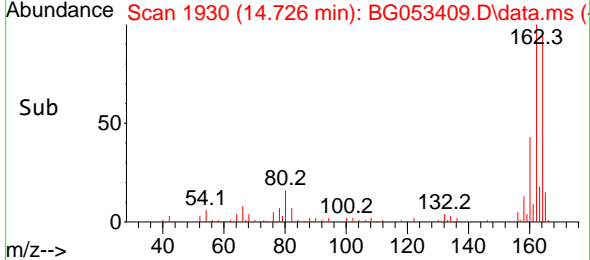
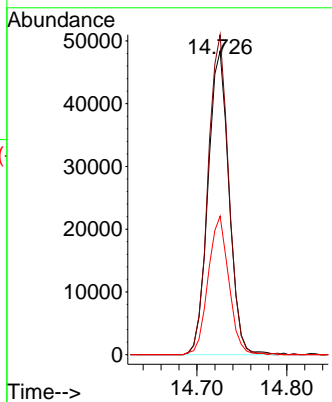
ClientSampleId :

SB07-13-14-FT

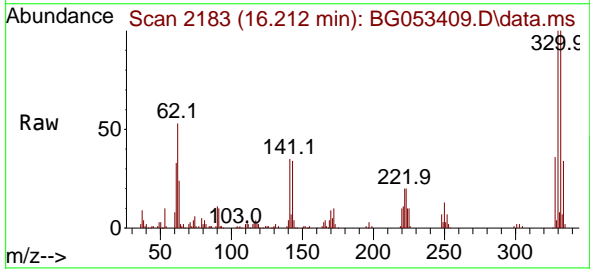


Tgt Ion:164 Resp: 78254

Ion	Ratio	Lower	Upper
164	100		
162	105.4	80.0	120.0
160	45.6	38.8	58.2

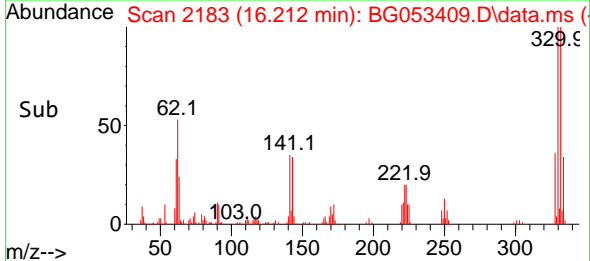
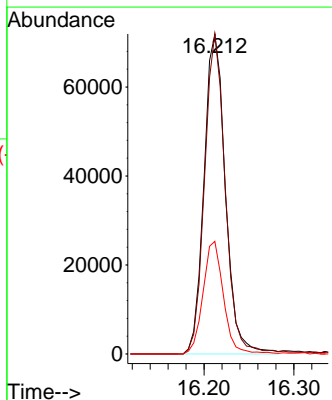


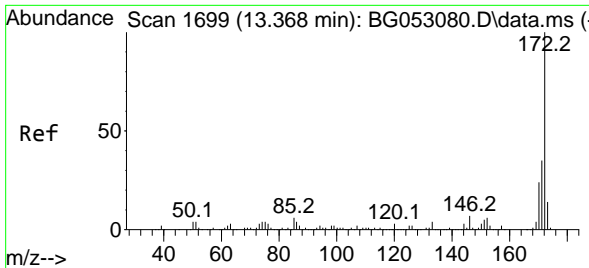
#42  
 2,4,6-Tribromophenol  
 Concen: 95.429 ng  
 RT: 16.212 min Scan# 2183  
 Delta R.T. -0.014 min  
 Lab File: BG053409.D  
 Acq: 2 May 2022 21:30



Tgt Ion:330 Resp: 118808

Ion	Ratio	Lower	Upper
330	100		
332	97.3	75.8	113.6
141	33.6	24.6	36.8

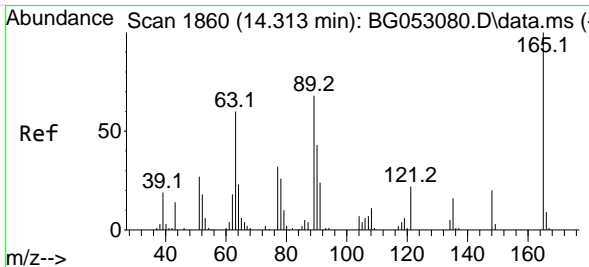
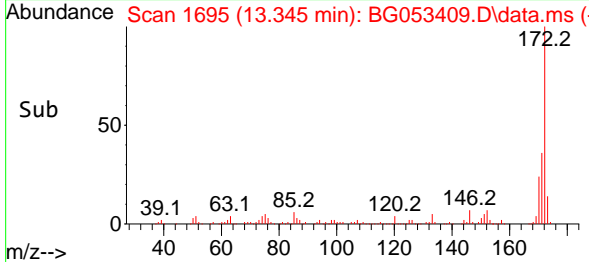
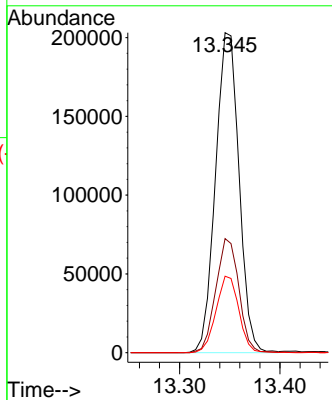
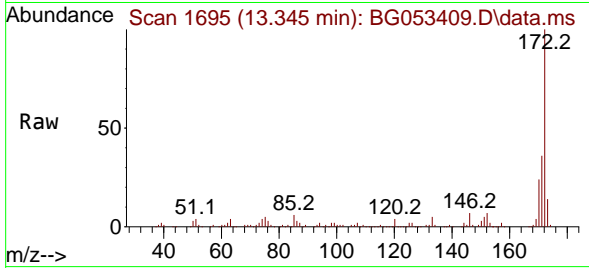




#45  
 2-Fluorobiphenyl  
 Concen: 58.266 ng  
 RT: 13.345 min Scan# 1  
 Delta R.T. -0.014 min  
 Lab File: BG053409.D  
 Acq: 2 May 2022 21:30

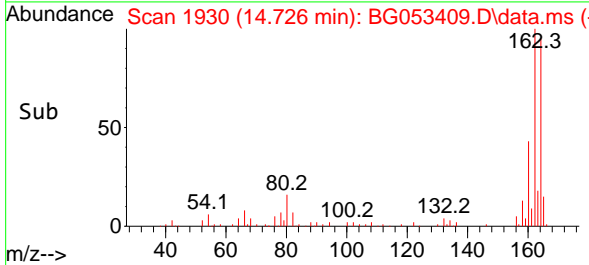
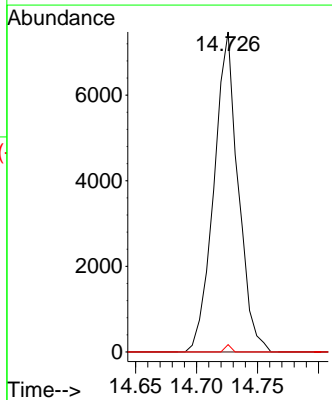
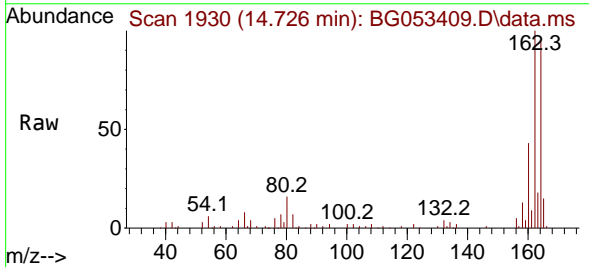
Instrument :  
 BNA\_G  
 ClientSampleId :  
 SB07-13-14-FT

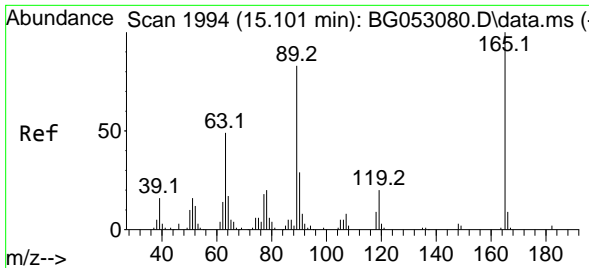
Tgt Ion:172 Resp: 330666  
 Ion Ratio Lower Upper  
 172 100  
 171 35.6 28.3 42.5  
 170 23.9 18.0 27.0



#51  
 2,6-Dinitrotoluene  
 Concen: 7.942 ng  
 RT: 14.726 min Scan# 1930  
 Delta R.T. 0.421 min  
 Lab File: BG053409.D  
 Acq: 2 May 2022 21:30

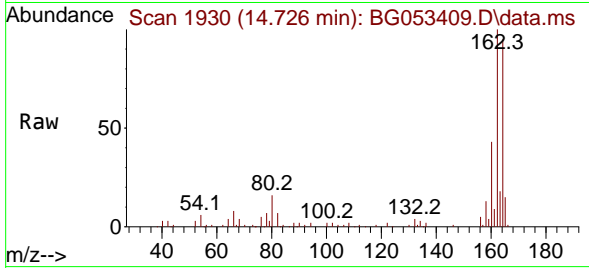
Tgt Ion:165 Resp: 10370  
 Ion Ratio Lower Upper  
 165 100  
 63 0.0 43.7 65.5#  
 89 2.3 45.0 67.4#





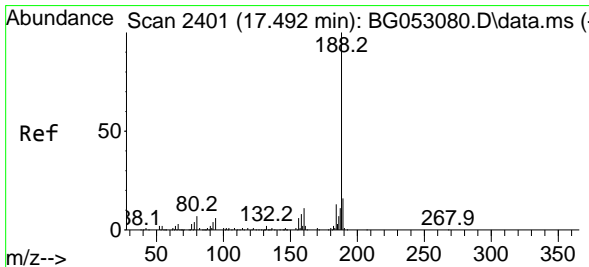
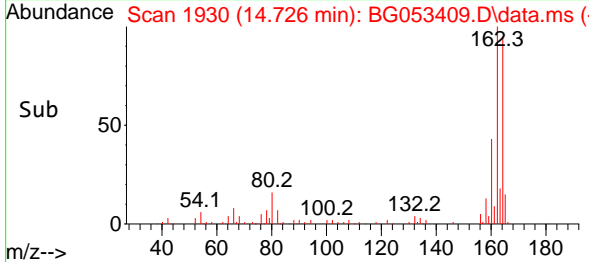
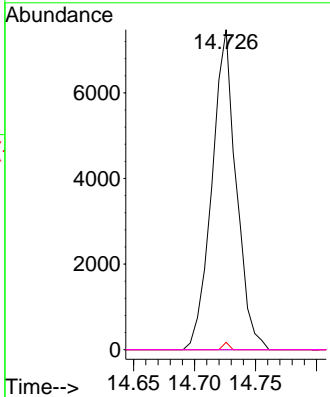
#57  
 2,4-Dinitrotoluene  
 Concen: 5.578 ng  
 RT: 14.726 min Scan# 1930  
 Delta R.T. -0.366 min  
 Lab File: BG053409.D  
 Acq: 2 May 2022 21:30

Instrument : BNA\_G  
 ClientSampleId : SB07-13-14-FT



Tgt Ion:165 Resp: 10370

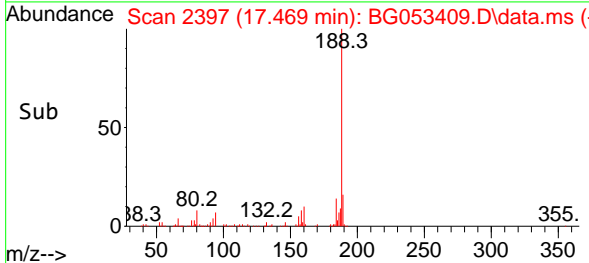
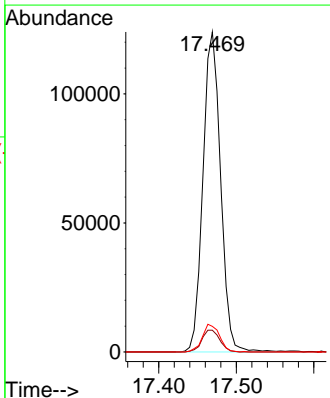
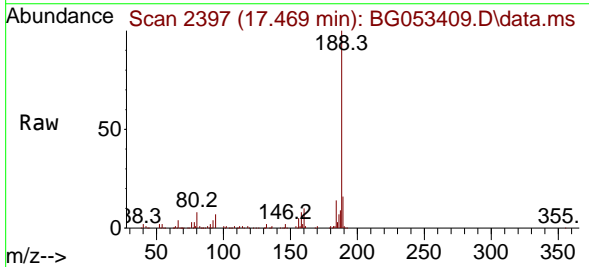
Ion	Ratio	Lower	Upper
165	100		
63	0.0	34.8	52.2#
89	2.3	57.4	86.0#
182	0.0	2.1	3.1#



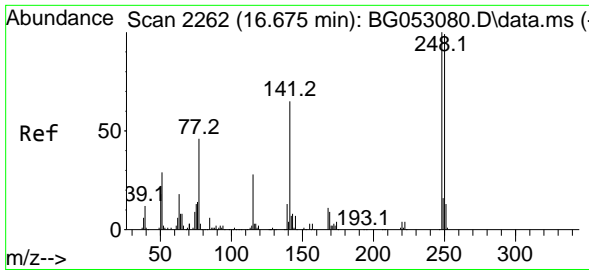
#64  
 Phenanthrene-d10  
 Concen: 20.000 ng  
 RT: 17.469 min Scan# 2397  
 Delta R.T. -0.014 min  
 Lab File: BG053409.D  
 Acq: 2 May 2022 21:30

Tgt Ion:188 Resp: 195598

Ion	Ratio	Lower	Upper
188	100		
94	6.8	5.7	8.5
80	8.0	7.2	10.8

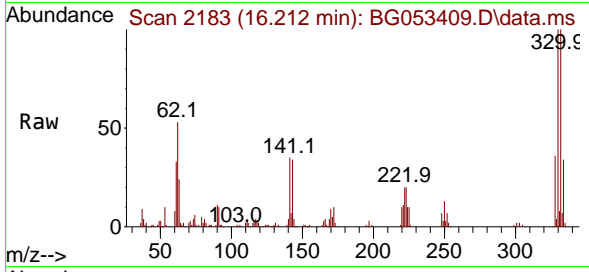




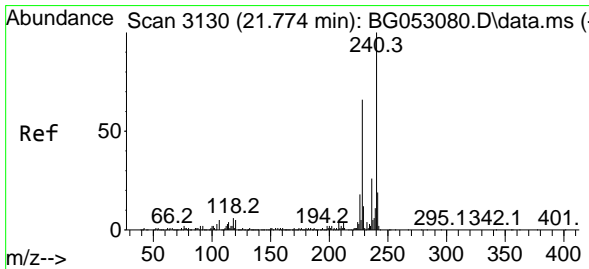
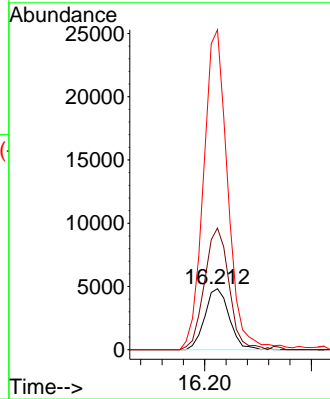
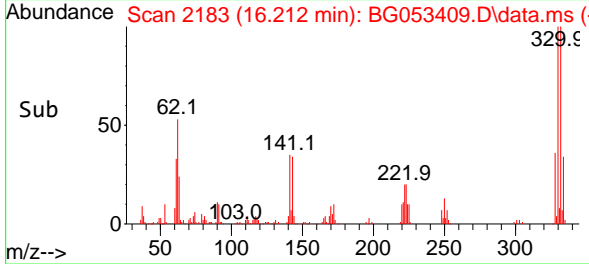


#67  
 4-Bromophenyl-phenylether  
 Concen: 3.061 ng  
 RT: 16.212 min Scan# 2118  
 Delta R.T. -0.449 min  
 Lab File: BG053409.D  
 Acq: 2 May 2022 21:30

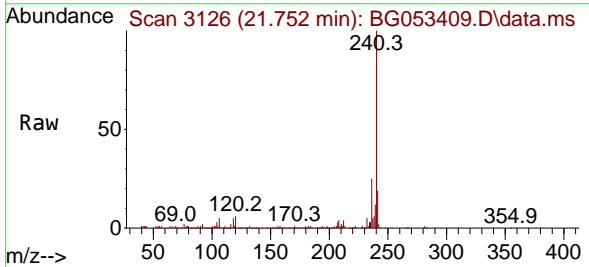
Instrument :  
 BNA\_G  
 ClientSampleId :  
 SB07-13-14-FT



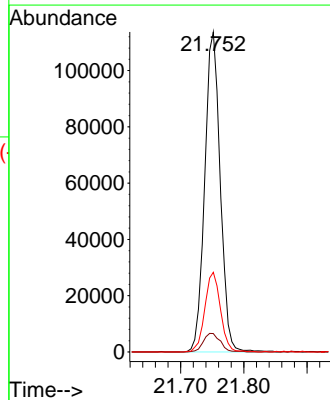
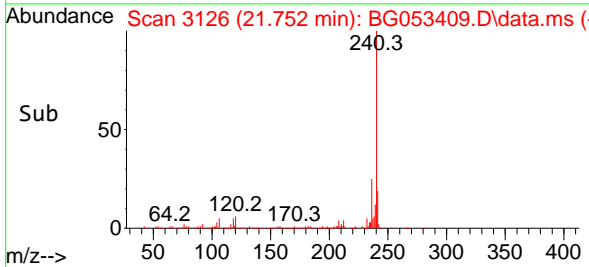
Tgt Ion:248 Resp: 7673  
 Ion Ratio Lower Upper  
 248 100  
 250 199.6 77.9 116.9#  
 141 525.5 49.2 73.8#

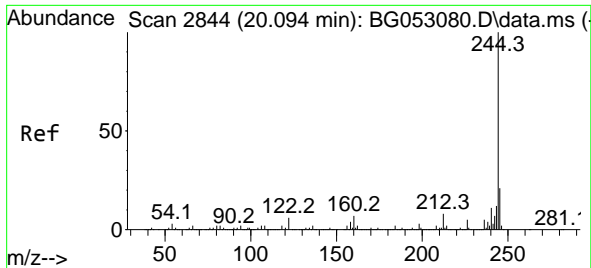


#76  
 Chrysene-d12  
 Concen: 20.000 ng  
 RT: 21.752 min Scan# 3126  
 Delta R.T. -0.014 min  
 Lab File: BG053409.D  
 Acq: 2 May 2022 21:30



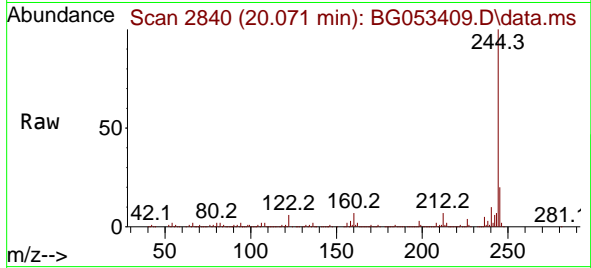
Tgt Ion:240 Resp: 193815  
 Ion Ratio Lower Upper  
 240 100  
 120 5.7 5.4 8.0  
 236 24.9 19.8 29.6



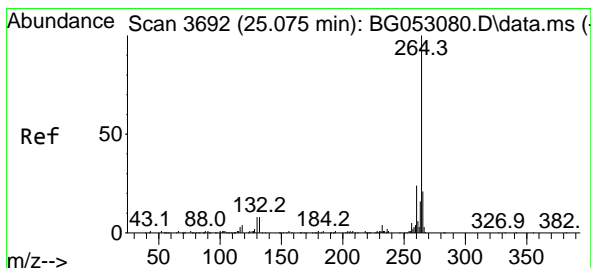
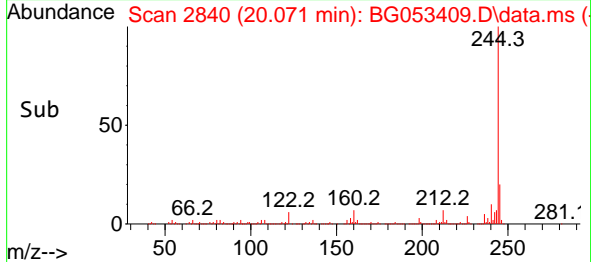
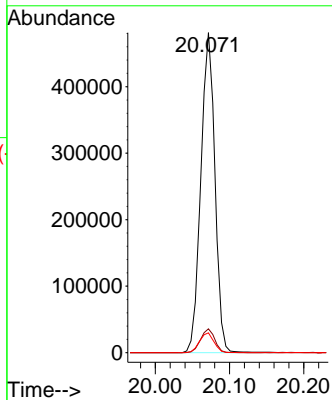


#79  
 Terphenyl-d14  
 Concen: 55.279 ng  
 RT: 20.071 min Scan# 21  
 Delta R.T. -0.014 min  
 Lab File: BG053409.D  
 Acq: 2 May 2022 21:30

Instrument :  
 BNA\_G  
 ClientSampleId :  
 SB07-13-14-FT



Tgt Ion:244 Resp: 634374  
 Ion Ratio Lower Upper  
 244 100  
 212 7.5 5.4 8.2  
 122 6.2 5.8 8.6



#86  
 Perylene-d12  
 Concen: 20.000 ng  
 RT: 25.041 min Scan# 3686  
 Delta R.T. -0.020 min  
 Lab File: BG053409.D  
 Acq: 2 May 2022 21:30

Tgt Ion:264 Resp: 200088  
 Ion Ratio Lower Upper  
 264 100  
 260 23.9 18.2 27.2  
 265 21.8 15.1 22.7

