

Data Path : Z:\HPCHEM1\BNA\_G\DATA\BG050317\  
 Data File : BG026850.D  
 Acq On : 3 May 2017 14:09  
 Operator : SJ/MA  
 Sample : I2871-04  
 Misc :  
 ALS Vial : 5 Sample Multiplier: 1

Instrument :  
 BNA\_G  
 ClientSampleId :  
 YAB17

Quant Time: May 04 00:50:25 2017  
 Quant Method : Z:\HPCHEM1\BNA\_G\METHODS\SOM-EPA-BG042717.M  
 Quant Title : SVOA CALIBRATION  
 QLast Update : Thu May 04 00:50:13 2017  
 Response via : Initial Calibration

Internal Standards	R.T.	QIon	Response	Conc	Units	Dev(Min)
1) 1,4-Dichlorobenzene-d4	8.01	152	161840	20.00	ng/ul	0.00
18) Naphthalene-d8	10.81	136	815016	20.00	ng/ul	0.00
35) Acenaphthene-d10	14.62	164	456101	20.00	ng/ul	0.00
61) Phenanthrene-d10	17.36	188	841511	20.00	ng/ul	0.00
75) Chrysene-d12	21.60	240	758756	20.00	ng/ul	0.00
83) Perylene-d12	24.77	264	788446	20.00	ng/ul	0.00

## System Monitoring Compounds

3) 1,4-Dioxane-d8	3.43	96	19348	5.38	ng/uL	0.00
5) Phenol-d5	7.19	99	458086	31.72	ng/ul	0.00
7) Bis-(2-Chloroethyl)ether-d	7.33	67	265104	31.21	ng/ul	0.00
9) 2-Chlorophenol-d4	7.54	132	361043	29.45	ng/ul	0.00
13) 4-Methylphenol-d8	8.72	113	381634	31.84	ng/ul	0.00
19) Nitrobenzene-d5	9.17	128	188957	27.74	ng/ul	0.00
22) 2-Nitrophenol-d4	9.89	143	211217	28.51	ng/ul	0.00
26) 2,4-Dichlorophenol-d3	10.44	165	339366	28.83	ng/ul	0.00
29) 4-Chloroaniline-d4	10.94	131	506397	32.13	ng/ul	0.00
43) Dimethylphthalate-d6	14.02	166	1030229	28.06	ng/ul	0.00
46) Acenaphthylene-d8	14.31	160	1364732	29.60	ng/ul	0.00
51) 4-Nitrophenol-d4	14.84	143	154096	23.29	ng/ul	0.00
57) Fluorene-d10	15.61	176	866895	27.05	ng/ul	0.00
62) 4,6-Dinitro-2-methylphenol	15.73	200	104633	20.48	ng/ul	0.00
70) Anthracene-d10	17.46	188	1201828	29.43	ng/ul	0.00
76) Pyrene-d10	19.74	212	1162886	29.04	ng/ul	0.00
87) Benzo(a)pyrene-d12	24.55	264	1089944	29.24	ng/ul	0.00

## Target Compounds

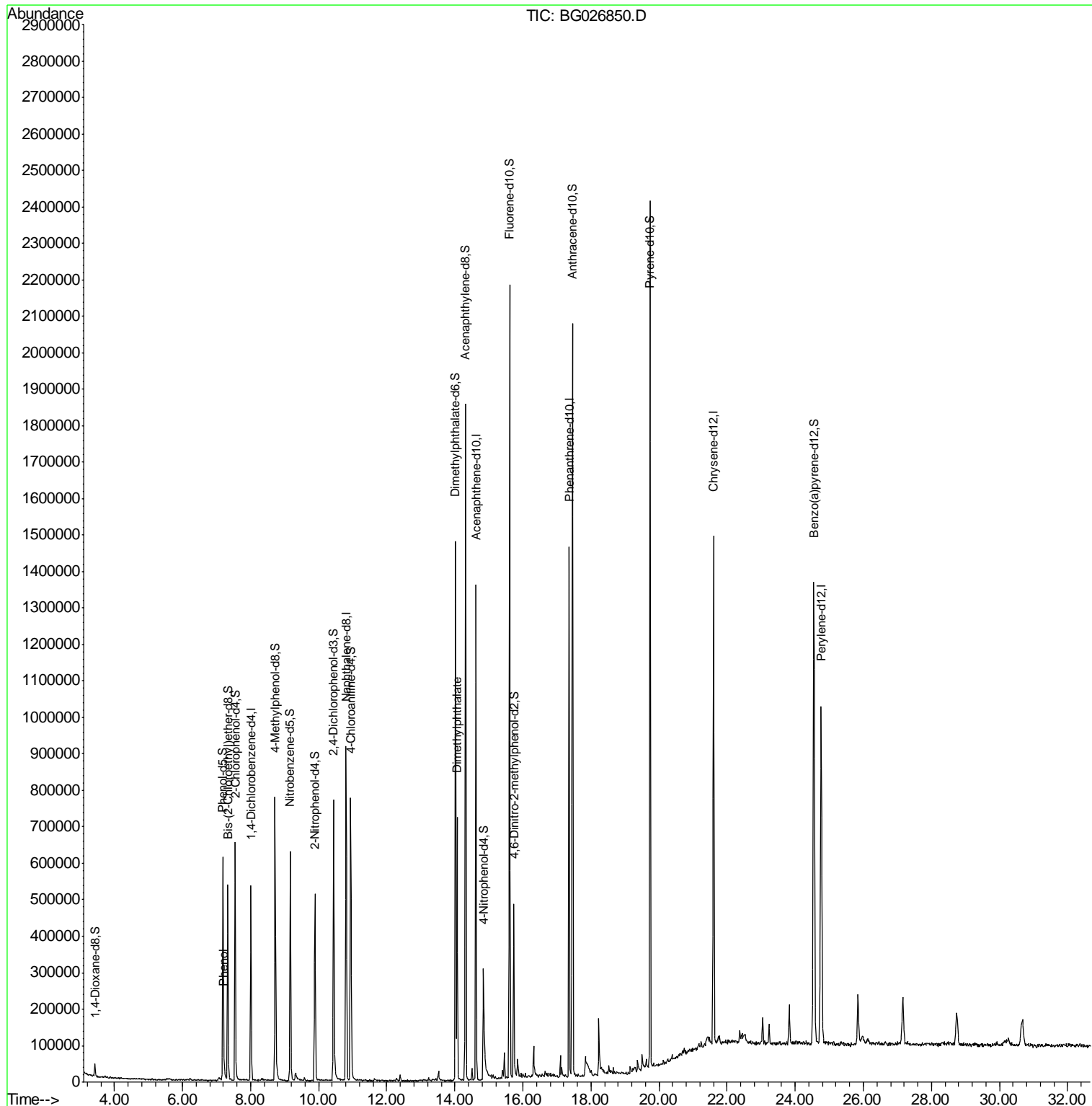
					Qvalue	
6) Phenol	7.22	94	17407	1.19	ng/ul#	88
44) Dimethylphthalate	14.07	163	481891	13.41	ng/ul	98

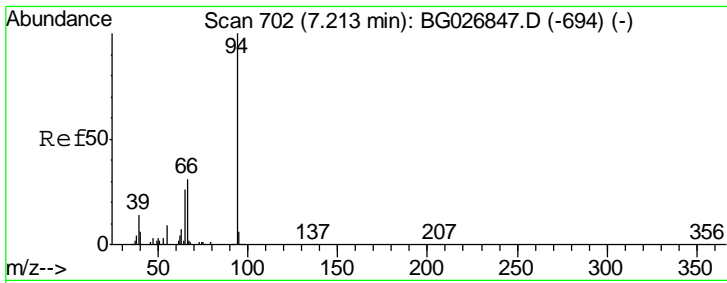
(#) = qualifier out of range (m) = manual integration (+) = signals summed

Data Path : Z:\HPCHEM1\BNA\_G\DATA\BG050317\  
 Data File : BG026850.D  
 Acq On : 3 May 2017 14:09  
 Operator : SJ/MA  
 Sample : I2871-04  
 Misc :  
 ALS Vial : 5 Sample Multiplier: 1

Instrument :  
 BNA\_G  
 Client Sampled :  
 YAB17

Quant Time: May 04 00:50:25 2017  
 Quant Method : Z:\HPCHEM1\BNA\_G\METHODS\SOM-EPA-BG042717.M  
 Quant Title : SVOA CALIBRATION  
 QLast Update : Thu May 04 00:50:13 2017  
 Response via : Initial Calibration

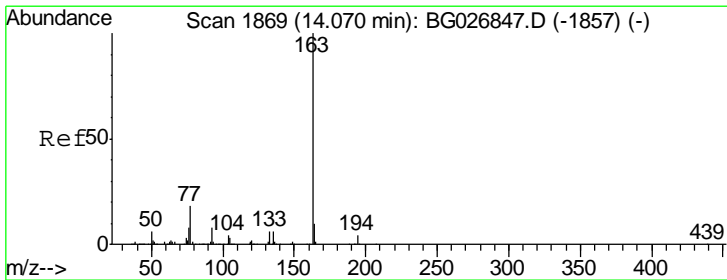
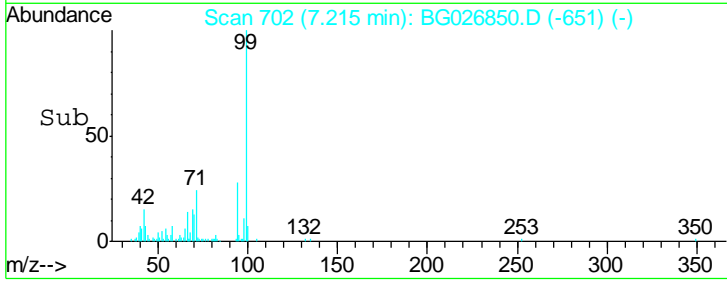
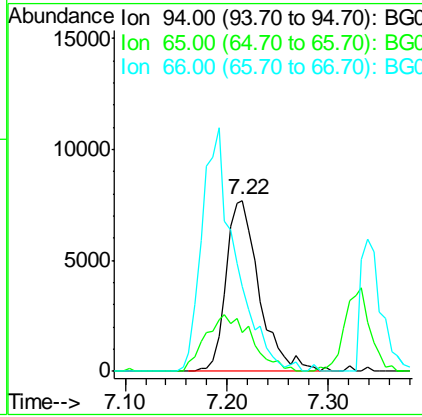
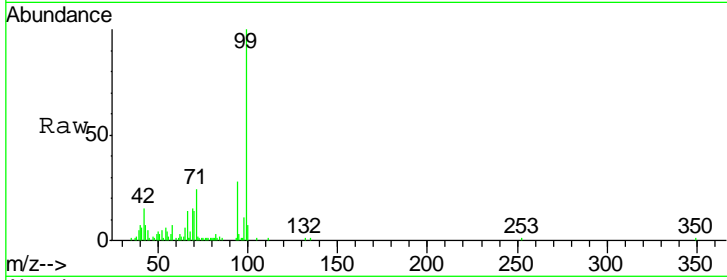




#6  
 Phenol  
 Concen: 1.19 ng/ul  
 RT: 7.22 min Scan# 702  
 Delta R.T. 0.00 min  
 Lab File: BG026850.D  
 Acq: 3 May 2017 14:09

Instrument :  
 BNA\_G  
 ClientSampled :  
 YAB17

Tgt Ion	Resp	Lower	Upper
94	17407		
65	22.7	26.8	40.2#
66	49.5	44.4	66.6



#44  
 Dimethylphthalate  
 Concen: 13.41 ng/ul  
 RT: 14.07 min Scan# 1868  
 Delta R.T. -0.00 min  
 Lab File: BG026850.D  
 Acq: 3 May 2017 14:09

Tgt Ion	Resp	Lower	Upper
163	481891		
194	3.8	3.4	5.0
164	10.1	9.0	13.4

