

Data Path : Z:\HPCHEM1\BNA_G\DATA\BG050815\
 Data File : BG017020.D
 Acq On : 10 May 2015 11:25
 Operator : TP/IZ
 Sample : G2171-04
 Misc :
 ALS Vial : 62 Sample Multiplier: 1

Instrument :
 BNA_G
 ClientSampleId :
 DCW-WW-134-5615

Integration Parameters: rteint.p
 Integrator: RTE
 Smoothing : ON
 Sampling : 1
 Start Thrs: 0.2
 Stop Thrs : 0

Filtering: 5
 Min Area: 3 % of largest Peak
 Max Peaks: 100
 Peak Location: TOP

If leading or trailing edge < 100 prefer < Baseline drop else tangent >
 Peak separation: 5

Method : Z:\HPCHEM1\BNA_G\METHODS\8270-BG050515.M
 Title : ASP BNA STANDARDS FOR 5 POINT CALIBRATION

Signal : TIC

peak #	R.T. min	first scan	max scan	last scan	PK TY	peak height	corr. area	corr. % max.	% of total
1	2.914	31	38	47	rBV2	379366	888507	15.21%	1.278%
2	2.990	47	51	57	rVV	624123	709981	12.15%	1.022%
3	3.995	216	222	235	rVB	933031	1298117	22.22%	1.868%
4	5.117	407	413	418	rBV	90204	136067	2.33%	0.196%
5	5.381	452	458	463	rVV	667730	954741	16.34%	1.374%
6	5.440	463	468	479	rVB	1236045	2809310	48.09%	4.042%
7	5.810	521	531	540	rBV	1669701	2836388	48.56%	4.081%
8	6.879	707	713	718	rBV2	248018	372079	6.37%	0.535%
9	6.938	718	723	725	rVV	139316	199296	3.41%	0.287%
10	6.973	725	729	732	rVV	438432	693953	11.88%	0.999%
11	7.015	732	736	742	rVB	423474	637536	10.91%	0.917%
12	7.179	759	764	777	rVB2	104035	172010	2.94%	0.248%
13	7.326	783	789	796	rVB	1256163	1963986	33.62%	2.826%
14	7.438	802	808	816	rBV2	711210	1196122	20.48%	1.721%
15	7.514	816	821	829	rVB2	299779	537959	9.21%	0.774%
16	7.790	861	868	872	rBV	250169	418501	7.16%	0.602%
17	7.855	877	879	881	rVV	85465	89181	1.53%	0.128%
18	7.902	881	887	894	rVV	386927	623465	10.67%	0.897%
19	7.972	894	899	904	rVB	65039	99185	1.70%	0.143%
20	8.107	916	922	927	rBV	1004416	1658436	28.39%	2.386%
21	8.160	927	931	938	rVB	550167	866377	14.83%	1.247%
22	8.243	939	945	949	rBV3	53968	90085	1.54%	0.130%
23	8.325	949	959	967	rVB	2343103	3789063	64.86%	5.452%
24	8.425	971	976	980	rVV	70995	99785	1.71%	0.144%
25	8.583	995	1003	1004	rBV5	33403	61893	1.06%	0.089%
26	8.607	1004	1007	1015	rVB5	43338	98637	1.69%	0.142%
27	8.889	1049	1055	1059	rBV2	92592	145193	2.49%	0.209%
28	8.948	1059	1065	1074	rVV	1003721	1676943	28.71%	2.413%
29	9.024	1074	1078	1083	rVV	75824	113787	1.95%	0.164%
30	9.300	1114	1125	1133	rVB2	350723	645784	11.06%	0.929%
31	9.412	1139	1144	1149	rVB2	60237	94373	1.62%	0.136%
32	9.471	1149	1154	1159	rBV2	105270	165698	2.84%	0.238%
33	9.612	1173	1178	1190	rVB2	419202	931971	15.95%	1.341%
34	9.770	1200	1205	1210	rBV2	77631	146731	2.51%	0.211%

Data Path : Z:\HPCHEM1\BNA_G\DATA\BG050815\
 Data File : BG017020.D
 Acq On : 10 May 2015 11:25
 Operator : TP/IZ
 Sample : G2171-04
 Misc :
 ALS Vial : 62 Sample Multiplier: 1

Instrument :
 BNA_G
 ClientSampleId :
 DCW-WW-134-5615

Integration Parameters: rteint.p
 Integrator: RTE
 Smoothing : ON
 Sampling : 1
 Start Thrs: 0.2
 Stop Thrs : 0

Filtering: 5
 Min Area: 3 % of largest Peak
 Max Peaks: 100
 Peak Location: TOP

If leading or trailing edge < 100 prefer < Baseline drop else tangent >
 Peak separation: 5

Method : Z:\HPCHEM1\BNA_G\METHODS\8270-BG050515.M
 Title : ASP BNA STANDARDS FOR 5 POINT CALIBRATION

35	9.829	1212	1215	1223	rVB2	46794	86308	1.48%	0.124%
36	9.999	1236	1244	1252	rVB	3500499	5841549	100.00%	8.405%
37	10.082	1252	1258	1262	rVV3	153554	317657	5.44%	0.457%
38	10.117	1262	1264	1271	rVB5	90605	150008	2.57%	0.216%
39	10.281	1287	1292	1298	rVB3	79945	134863	2.31%	0.194%
40	10.446	1311	1320	1327	rBV	521619	907691	15.54%	1.306%
41	10.581	1337	1343	1346	rBV	344240	574313	9.83%	0.826%
42	10.640	1346	1353	1358	rVV	3325254	5758057	98.57%	8.285%
43	10.693	1358	1362	1366	rVV2	97476	148590	2.54%	0.214%
44	10.746	1366	1371	1377	rVB2	320751	555202	9.50%	0.799%
45	10.963	1395	1408	1423	rBV6	176169	638157	10.92%	0.918%
46	11.092	1423	1430	1438	rVB7	35167	94768	1.62%	0.136%
47	11.186	1438	1446	1456	rBV5	106092	231961	3.97%	0.334%
48	11.280	1458	1462	1467	rVB5	38510	72040	1.23%	0.104%
49	11.345	1467	1473	1475	rBV	70479	105900	1.81%	0.152%
50	11.392	1476	1481	1491	rVB3	169414	425858	7.29%	0.613%
51	11.750	1535	1542	1548	rBV2	316919	737977	12.63%	1.062%
52	11.809	1548	1552	1554	rBV2	154797	214400	3.67%	0.308%
53	11.874	1560	1563	1570	rVB	138340	199401	3.41%	0.287%
54	11.938	1570	1574	1577	rBV3	40459	70118	1.20%	0.101%
55	12.056	1585	1594	1598	rBV5	131973	291886	5.00%	0.420%
56	12.103	1598	1602	1605	rVV3	60612	103921	1.78%	0.150%
57	12.173	1605	1614	1620	rVB2	418297	688547	11.79%	0.991%
58	12.244	1620	1626	1633	rBV	690129	1134179	19.42%	1.632%
59	12.303	1633	1636	1640	rVB4	49747	66140	1.13%	0.095%
60	12.361	1640	1646	1651	rBV5	54515	97592	1.67%	0.140%
61	12.467	1655	1664	1675	rVB	655152	1146734	19.63%	1.650%
62	12.561	1675	1680	1687	rBV3	87738	195170	3.34%	0.281%
63	12.626	1687	1691	1698	rVB3	154034	255585	4.38%	0.368%
64	12.696	1698	1703	1710	rVB2	125617	190631	3.26%	0.274%
65	12.784	1712	1718	1723	rBV4	332612	540407	9.25%	0.778%
66	12.861	1728	1731	1735	rVV3	70084	112017	1.92%	0.161%
67	12.896	1735	1737	1744	rVV3	58577	88469	1.51%	0.127%
68	13.049	1757	1763	1770	rVB	2501890	3647011	62.43%	5.248%
69	13.190	1781	1787	1791	rBV	140718	234727	4.02%	0.338%
70	13.389	1815	1821	1828	rBV10	52997	147094	2.52%	0.212%
71	13.483	1829	1837	1840	rBV6	92863	198771	3.40%	0.286%

Data Path : Z:\HPCHEM1\BNA_G\DATA\BG050815\
 Data File : BG017020.D
 Acq On : 10 May 2015 11:25
 Operator : TP/IZ
 Sample : G2171-04
 Misc :
 ALS Vial : 62 Sample Multiplier: 1

Instrument :
 BNA_G
 ClientSampleId :
 DCW-WW-134-5615

Integration Parameters: rteint.p
 Integrator: RTE
 Smoothing : ON Filtering: 5
 Sampling : 1 Min Area: 3 % of largest Peak
 Start Thrs: 0.2 Max Peaks: 100
 Stop Thrs : 0 Peak Location: TOP

If leading or trailing edge < 100 prefer < Baseline drop else tangent >
 Peak separation: 5

Method : Z:\HPCHEM1\BNA_G\METHODS\8270-BG050515.M
 Title : ASP BNA STANDARDS FOR 5 POINT CALIBRATION

72	13.595	1850	1856	1860	rBV4	95685	194820	3.34%	0.280%
73	13.636	1861	1863	1872	rVB6	57374	98005	1.68%	0.141%
74	13.748	1876	1882	1888	rBV3	120401	348420	5.96%	0.501%
75	13.801	1888	1891	1901	rVB5	85799	163632	2.80%	0.235%
76	13.989	1919	1923	1933	rVB5	58272	155836	2.67%	0.224%
77	14.147	1945	1950	1955	rVB6	59556	122652	2.10%	0.176%
78	14.306	1973	1977	1986	rVB6	59619	108331	1.85%	0.156%
79	14.429	1988	1998	2003	rVV2	574145	929407	15.91%	1.337%
80	14.488	2004	2008	2016	rVV2	93300	176448	3.02%	0.254%
81	14.788	2054	2059	2063	rVV	138775	191403	3.28%	0.275%
82	14.829	2063	2066	2072	rVB7	43421	73162	1.25%	0.105%
83	14.905	2072	2079	2083	rBV2	100721	164570	2.82%	0.237%
84	14.952	2084	2087	2092	rVB6	57478	81672	1.40%	0.118%
85	15.246	2134	2137	2140	rBV	80484	104777	1.79%	0.151%
86	15.352	2149	2155	2163	rBV2	153510	276706	4.74%	0.398%
87	15.475	2171	2176	2188	rVB3	179355	415187	7.11%	0.597%
88	15.781	2225	2228	2232	rVB3	67512	106214	1.82%	0.153%
89	15.916	2245	2251	2258	rVV	2155133	3146665	53.87%	4.528%
90	16.104	2276	2283	2285	rBV5	111495	208800	3.57%	0.300%
91	16.580	2362	2364	2370	rVB7	48292	70829	1.21%	0.102%
92	16.932	2419	2424	2426	rBV5	55063	75492	1.29%	0.109%
93	17.167	2459	2464	2469	rVV2	689881	946929	16.21%	1.363%
94	18.066	2613	2617	2624	rVB3	208371	305258	5.23%	0.439%
95	18.137	2625	2629	2633	rVB	88280	102261	1.75%	0.147%
96	19.347	2831	2835	2841	rVB3	142277	204155	3.49%	0.294%
97	19.794	2906	2911	2917	rBV	3968112	4938873	84.55%	7.106%
98	21.057	3123	3126	3130	rBV	75824	85053	1.46%	0.122%
99	21.345	3170	3175	3180	rBV	876152	1057405	18.10%	1.521%
100	23.642	3559	3566	3574	rVB	526423	1020769	17.47%	1.469%

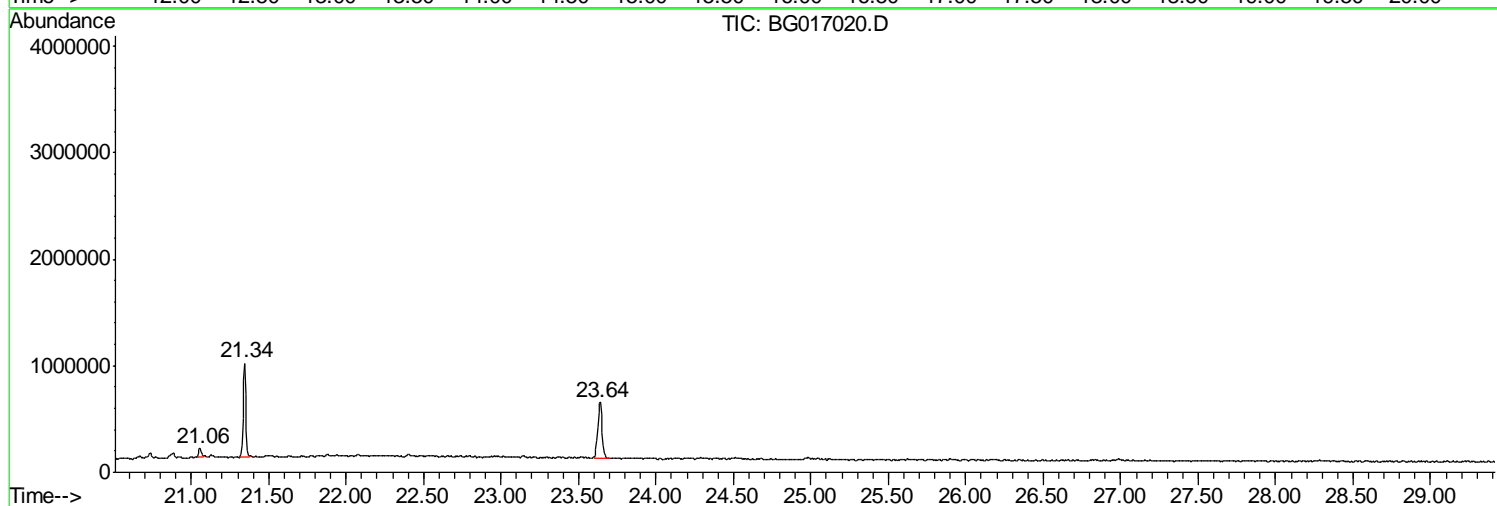
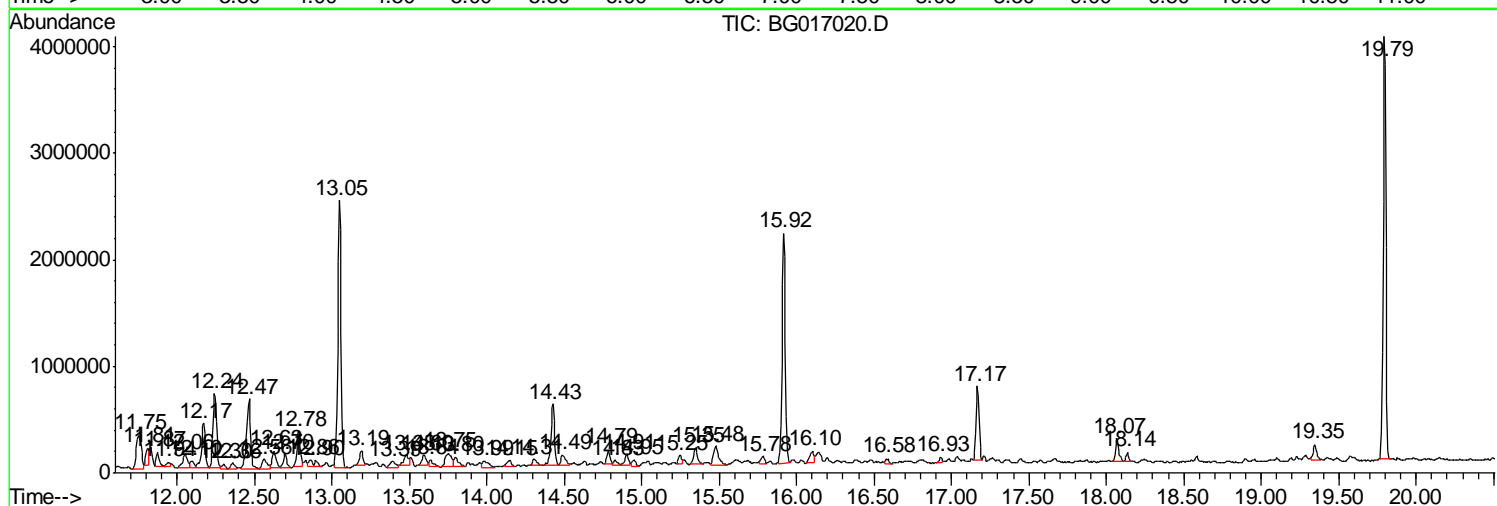
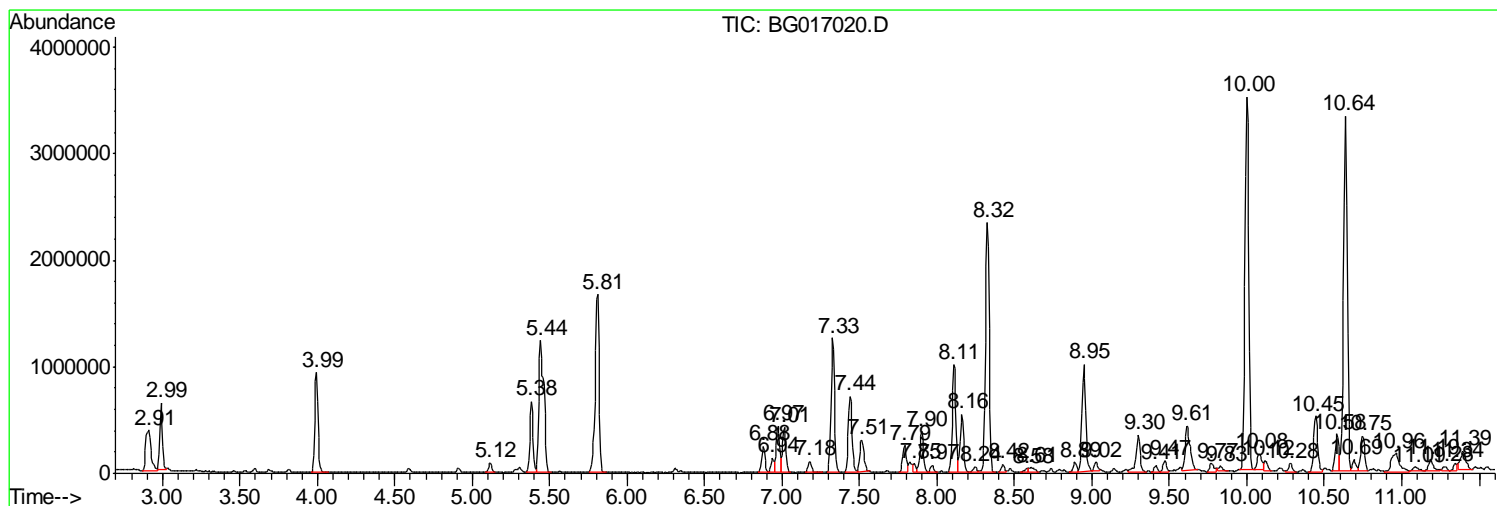
Sum of corrected areas: 69498570

Data Path : Z:\HPCHEM1\BNA_G\DATA\BG050815\
 Data File : BG017020.D
 Acq On : 10 May 2015 11:25
 Operator : TP/IZ
 Sample : G2171-04
 Misc :
 ALS Vial : 62 Sample Multiplier: 1

Instrument :
 BNA_G
ClientSampleID :
 DCW-WW-134-5615

Quant Method : Z:\HPCHEM1\BNA_G\METHODS\8270-BG050515.M
 Quant Title : ASP BNA STANDARDS FOR 5 POINT CALIBRATION

TIC Library : C:\DATABASE\NIST02.L
 TIC Integration Parameters: LSCINT.P



Data Path : Z:\HPCHEM1\BNA_G\DATA\BG050815\
 Data File : BG017020.D
 Acq On : 10 May 2015 11:25
 Operator : TP/IZ
 Sample : G2171-04
 Misc :
 ALS Vial : 62 Sample Multiplier: 1

Instrument :
 BNA_G
 ClientSampleID :
 DCW-WW-134-5615

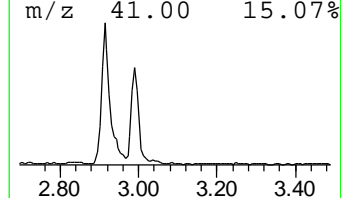
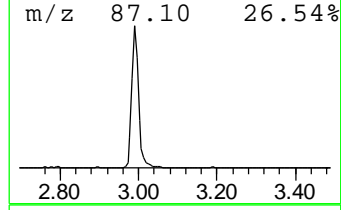
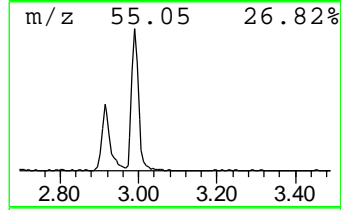
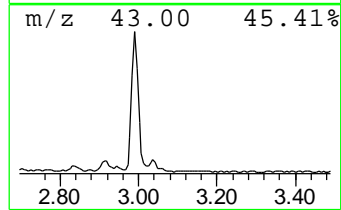
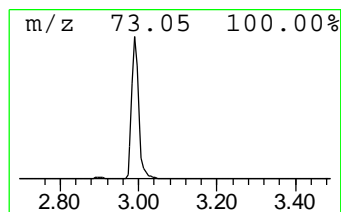
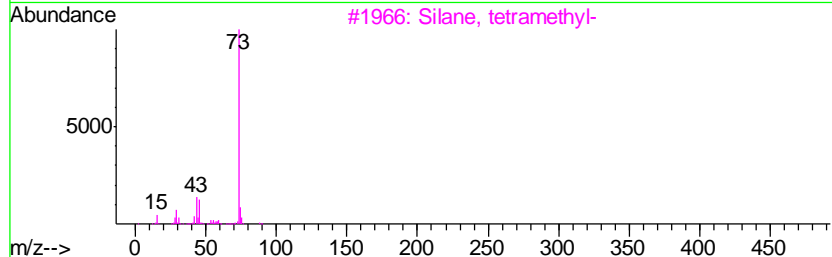
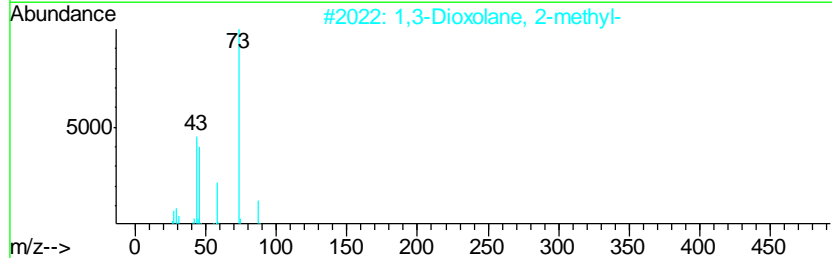
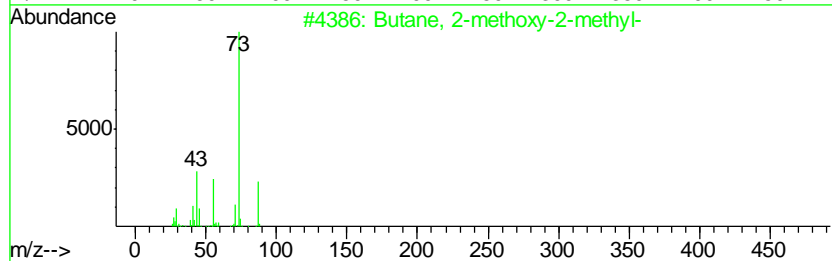
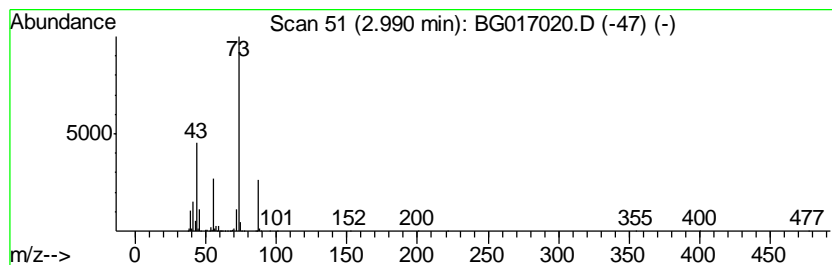
Quant Method : Z:\HPCHEM1\BNA_G\METHODS\8270-BG050515.M
 Quant Title : ASP BNA STANDARDS FOR 5 POINT CALIBRATION

TIC Library : C:\DATABASE\NIST02.L
 TIC Integration Parameters: LSCINT.P

 Peak Number 2 Butane, 2-methoxy-2-methyl- Concentration Rank 10

R.T.	EstConc	Area	Relative to ISTD	R.T.
2.99	33.93 ng	709981	1,4-Dichlorobenzene-d4	7.79

Hit#	of	Tentative ID	MW	MolForm	CAS#	Qual
1	5	Butane, 2-methoxy-2-methyl-	102	C6H14O	000994-05-8	72
2		1,3-Dioxolane, 2-methyl-	88	C4H8O2	000497-26-7	28
3		Silane, tetramethyl-	88	C4H12Si	000075-76-3	17
4		N-Ethylformamide	73	C3H7NO	000627-45-2	9
5		2-Methyl-5-hexen-3-ol	114	C7H14O	032815-70-6	9



Data Path : Z:\HPCHEM1\BNA_G\DATA\BG050815\
 Data File : BG017020.D
 Acq On : 10 May 2015 11:25
 Operator : TP/IZ
 Sample : G2171-04
 Misc :
 ALS Vial : 62 Sample Multiplier: 1

Instrument :
 BNA_G
 ClientSampleID :
 DCW-WW-134-5615

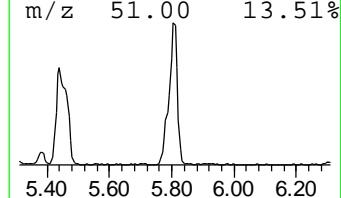
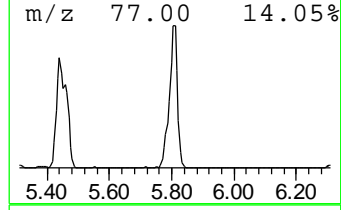
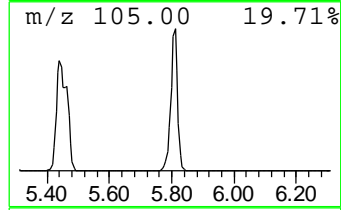
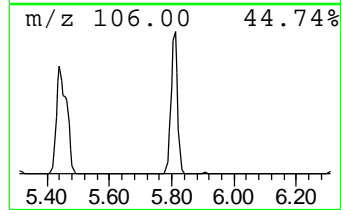
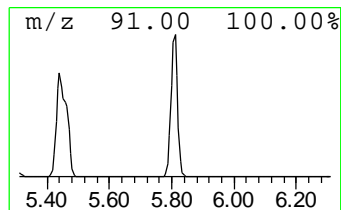
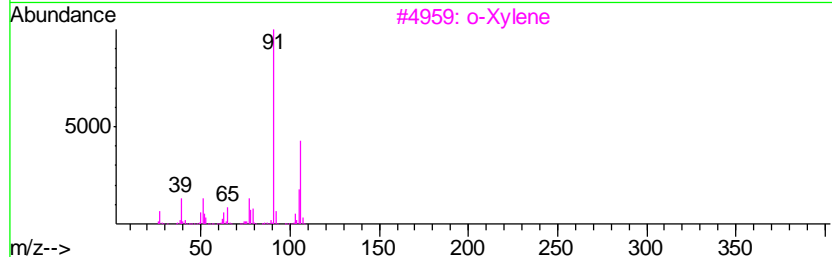
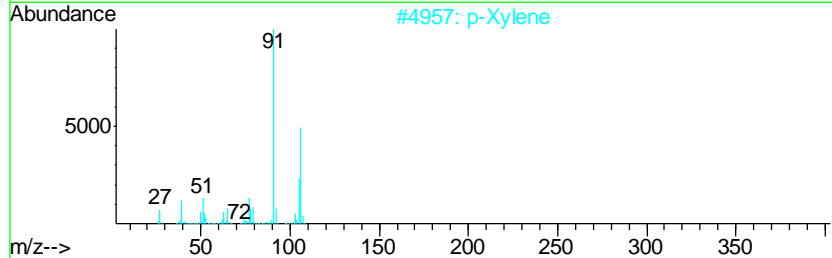
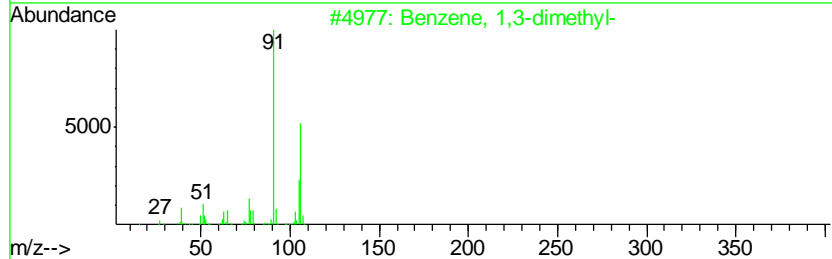
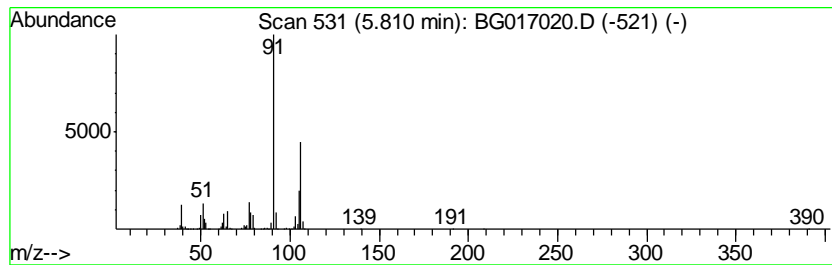
Quant Method : Z:\HPCHEM1\BNA_G\METHODS\8270-BG050515.M
 Quant Title : ASP BNA STANDARDS FOR 5 POINT CALIBRATION

TIC Library : C:\DATABASE\NIST02.L
 TIC Integration Parameters: LSCINT.P

 Peak Number 5 Benzene, 1,3-dimethyl- Concentration Rank 3

R.T.	EstConc	Area	Relative to ISTD	R.T.
5.81	135.55 ng	2836390	1,4-Dichlorobenzene-d4	7.79

Hit#	of	Tentative ID	MW	MolForm	CAS#	Qual
1	5	Benzene, 1,3-dimethyl-	106	C8H10	000108-38-3	97
2		p-Xylene	106	C8H10	000106-42-3	97
3		o-Xylene	106	C8H10	000095-47-6	97
4		Ethylbenzene	106	C8H10	000100-41-4	93
5		1,3-Cyclopentadiene, 5-(1-methyl...	106	C8H10	002175-91-9	87



Data Path : Z:\HPCHEM1\BNA_G\DATA\BG050815\
 Data File : BG017020.D
 Acq On : 10 May 2015 11:25
 Operator : TP/IZ
 Sample : G2171-04
 Misc :
 ALS Vial : 62 Sample Multiplier: 1

Instrument :
 BNA_G
 ClientSampleID :
 DCW-WW-134-5615

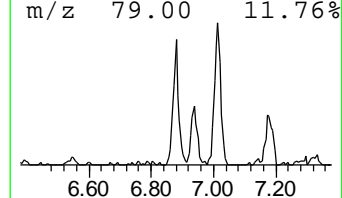
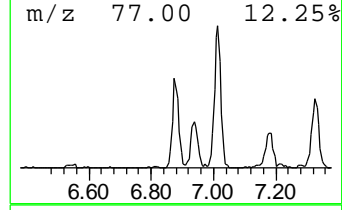
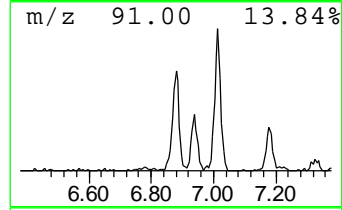
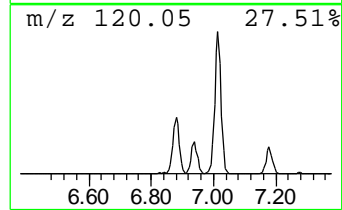
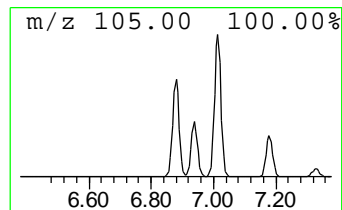
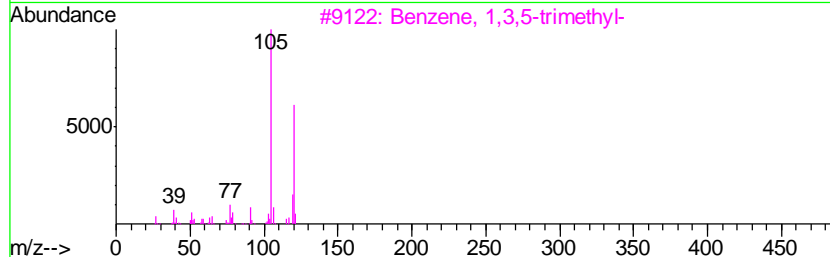
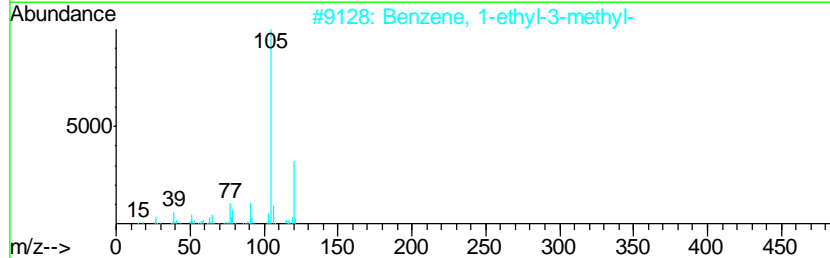
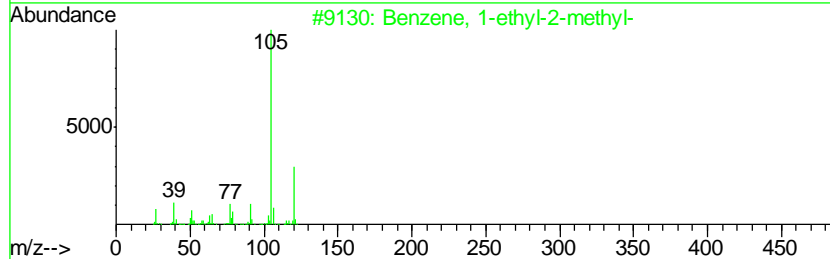
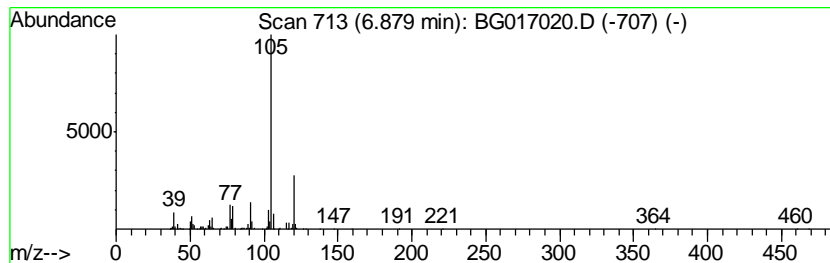
Quant Method : Z:\HPCHEM1\BNA_G\METHODS\8270-BG050515.M
 Quant Title : ASP BNA STANDARDS FOR 5 POINT CALIBRATION

TIC Library : C:\DATABASE\NIST02.L
 TIC Integration Parameters: LSCINT.P

 Peak Number 6 Benzene, 1-ethyl-2-methyl- Concentration Rank 19

R.T.	EstConc	Area	Relative to ISTD	R.T.
6.88	17.78 ng	372079	1,4-Dichlorobenzene-d4	7.79

Hit#	of	Tentative ID	MW	MolForm	CAS#	Qual
1	5	Benzene, 1-ethyl-2-methyl-	120	C9H12	000611-14-3	95
2		Benzene, 1-ethyl-3-methyl-	120	C9H12	000620-14-4	95
3		Benzene, 1,3,5-trimethyl-	120	C9H12	000108-67-8	91
4		Benzene, 1-ethyl-4-methyl-	120	C9H12	000622-96-8	90
5		Benzene, 1,2,3-trimethyl-	120	C9H12	000526-73-8	87



Data Path : Z:\HPCHEM1\BNA_G\DATA\BG050815\
 Data File : BG017020.D
 Acq On : 10 May 2015 11:25
 Operator : TP/IZ
 Sample : G2171-04
 Misc :
 ALS Vial : 62 Sample Multiplier: 1

Instrument :
 BNA_G
 ClientSampleId :
 DCW-WW-134-5615

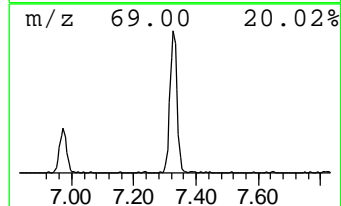
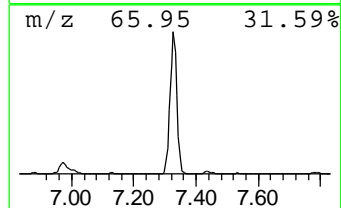
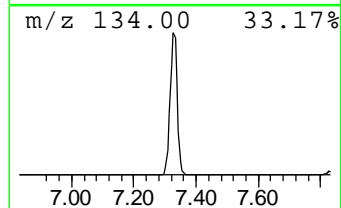
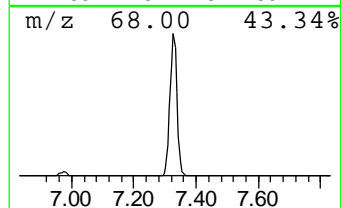
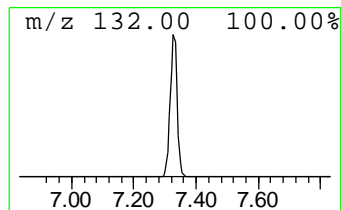
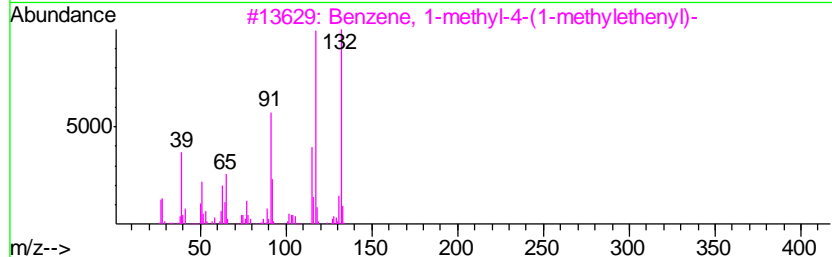
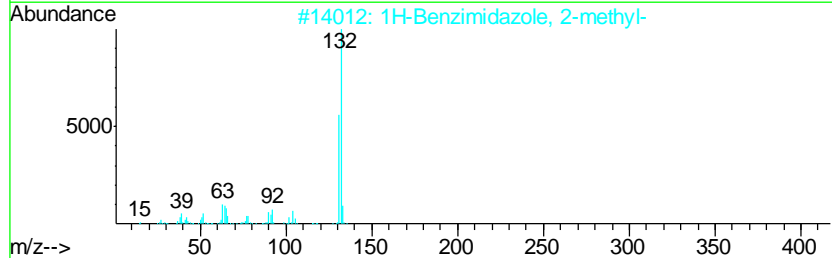
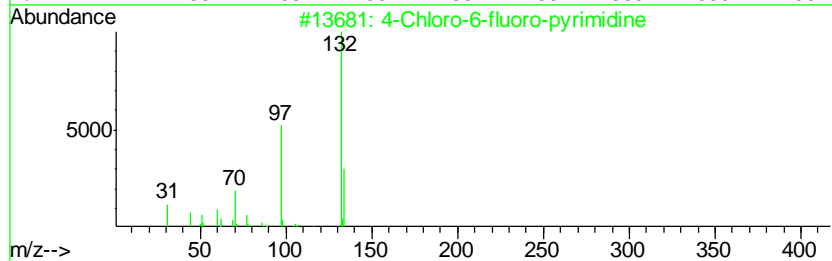
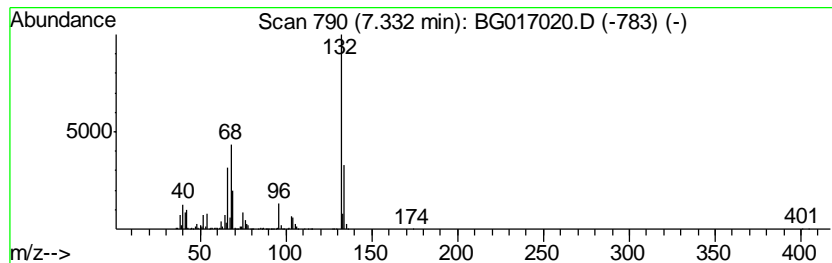
Quant Method : Z:\HPCHEM1\BNA_G\METHODS\8270-BG050515.M
 Quant Title : ASP BNA STANDARDS FOR 5 POINT CALIBRATION

TIC Library : C:\DATABASE\NIST02.L
 TIC Integration Parameters: LSCINT.P

 Peak Number 7 unknown7.33 Concentration Rank 5

R.T.	EstConc	Area	Relative to ISTD	R.T.
7.33	93.86 ng	1963990	1,4-Dichlorobenzene-d4	7.79

Hit#	of	Tentative ID	MW	MolForm	CAS#	Qual
1	5	4-Chloro-6-fluoro-pyrimidine	132	C4H2ClFN2	051422-01-6	27
2		1H-Benzimidazole, 2-methyl-	132	C8H8N2	000615-15-6	22
3		Benzene, 1-methyl-4-(1-methyleth...	132	C10H12	001195-32-0	10
4		(5-METHYL-2-PYRIDYL)ACETONITRILE	132	C8H8N2	1000241-93-9	10
5		5-Aminoindole	132	C8H8N2	005192-03-0	10



Data Path : Z:\HPCHEM1\BNA_G\DATA\BG050815\
 Data File : BG017020.D
 Acq On : 10 May 2015 11:25
 Operator : TP/IZ
 Sample : G2171-04
 Misc :
 ALS Vial : 62 Sample Multiplier: 1

Instrument :
 BNA_G
 ClientSampleID :
 DCW-WW-134-5615

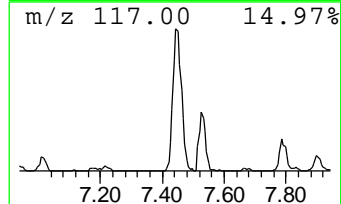
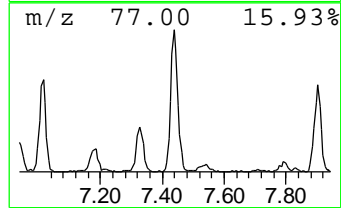
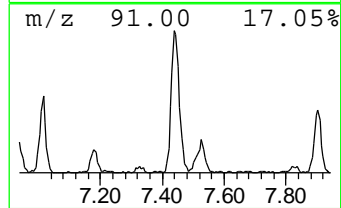
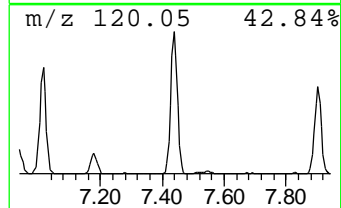
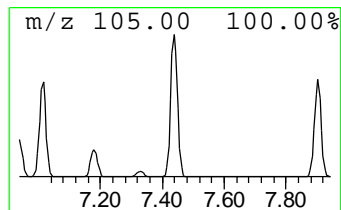
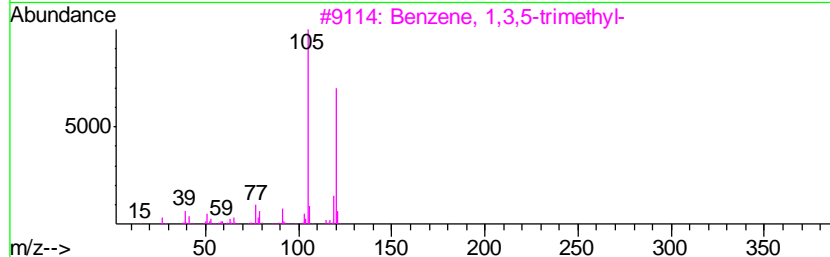
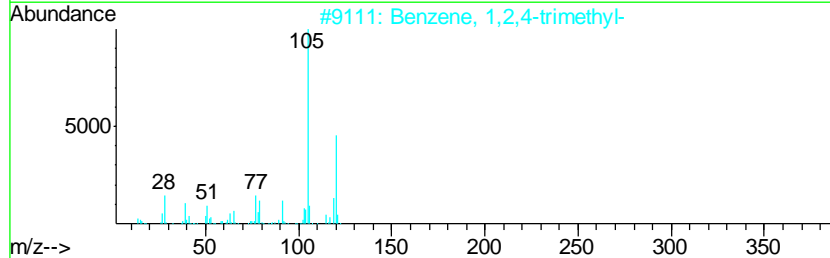
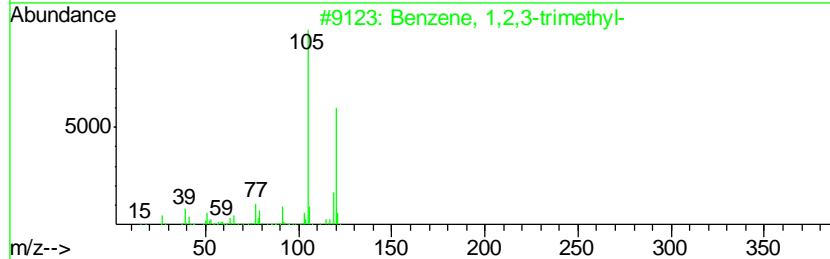
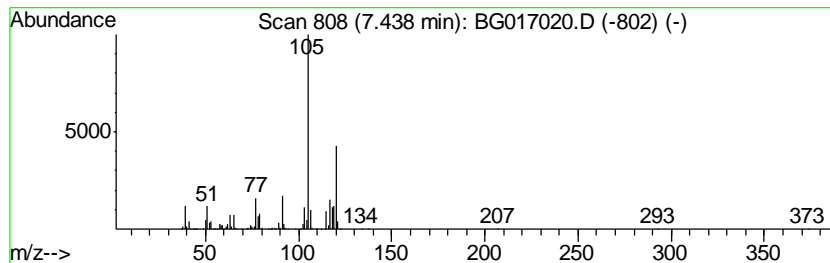
Quant Method : Z:\HPCHEM1\BNA_G\METHODS\8270-BG050515.M
 Quant Title : ASP BNA STANDARDS FOR 5 POINT CALIBRATION

TIC Library : C:\DATABASE\NIST02.L
 TIC Integration Parameters: LSCINT.P

 Peak Number 8 Benzene, 1,2,3-trimethyl- Concentration Rank 7

R.T.	EstConc	Area	Relative to ISTD	R.T.
7.44	57.16 ng	1196120	1,4-Dichlorobenzene-d4	7.79

Hit#	of	Tentative ID	MW	MolForm	CAS#	Qual
1	5	Benzene, 1,2,3-trimethyl-	120	C9H12	000526-73-8	76
2		Benzene, 1,2,4-trimethyl-	120	C9H12	000095-63-6	76
3		Benzene, 1,3,5-trimethyl-	120	C9H12	000108-67-8	76
4		Benzene, 1-ethyl-4-methyl-	120	C9H12	000622-96-8	70
5		2,4-Nonadiyne	120	C9H12	063621-15-8	64



Data Path : Z:\HPCHEM1\BNA_G\DATA\BG050815\
 Data File : BG017020.D
 Acq On : 10 May 2015 11:25
 Operator : TP/IZ
 Sample : G2171-04
 Misc :
 ALS Vial : 62 Sample Multiplier: 1

Instrument :
 BNA_G
 ClientSampleID :
 DCW-WW-134-5615

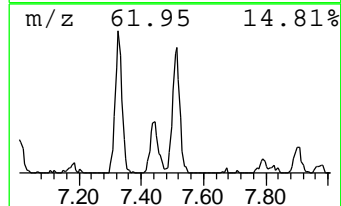
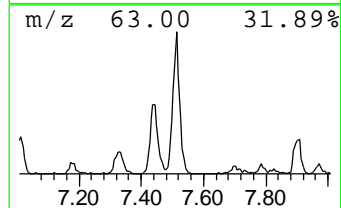
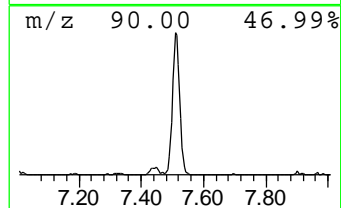
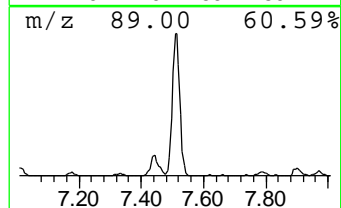
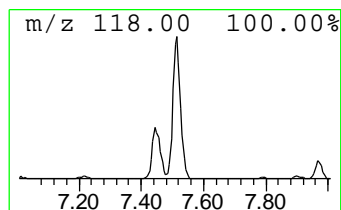
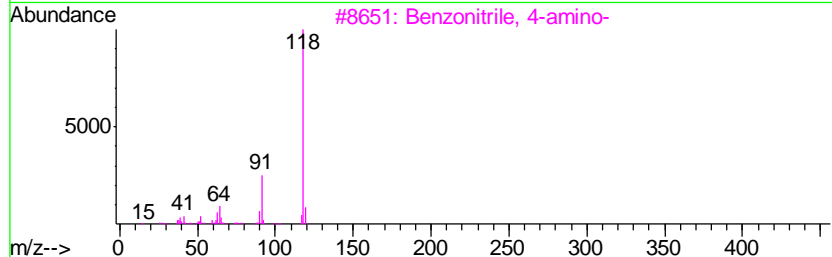
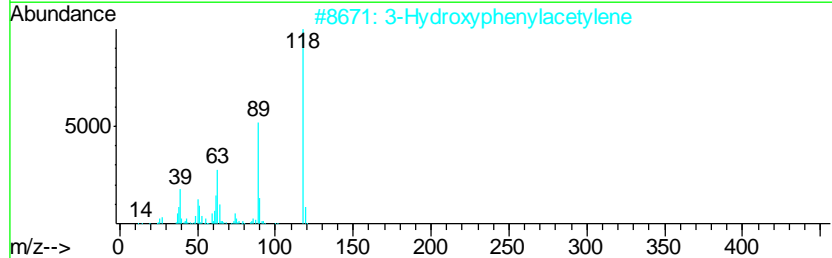
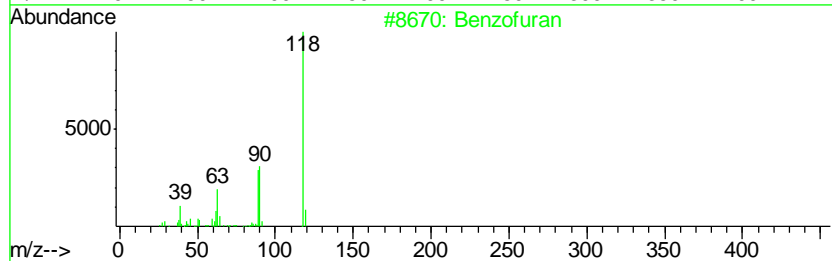
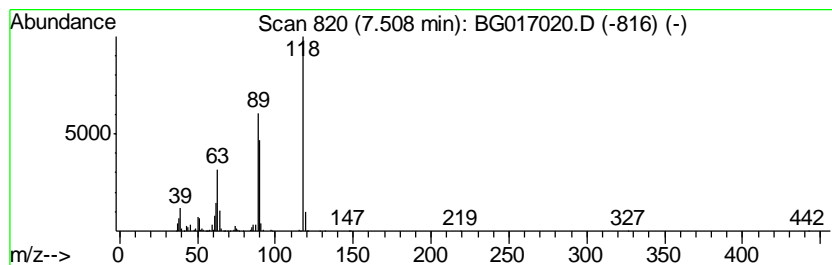
Quant Method : Z:\HPCHEM1\BNA_G\METHODS\8270-BG050515.M
 Quant Title : ASP BNA STANDARDS FOR 5 POINT CALIBRATION

TIC Library : C:\DATABASE\NIST02.L
 TIC Integration Parameters: LSCINT.P

 Peak Number 9 Benzofuran Concentration Rank 13

R.T.	EstConc	Area	Relative to ISTD	R.T.
7.51	25.71 ng	537959	1,4-Dichlorobenzene-d4	7.79

Hit#	of	Tentative ID	MW	MolForm	CAS#	Qual
1	5	Benzofuran	118	C8H6O	000271-89-6	91
2		3-Hydroxyphenylacetylene	118	C8H6O	010401-11-3	74
3		Benzonitrile, 4-amino-	118	C7H6N2	000873-74-5	35
4		Benzonitrile, 2-amino-	118	C7H6N2	001885-29-6	35
5		Benzonitrile, m-amino-	118	C7H6N2	002237-30-1	35



Data Path : Z:\HPCHEM1\BNA_G\DATA\BG050815\
 Data File : BG017020.D
 Acq On : 10 May 2015 11:25
 Operator : TP/IZ
 Sample : G2171-04
 Misc :
 ALS Vial : 62 Sample Multiplier: 1

Instrument :
 BNA_G
 ClientSampleID :
 DCW-WW-134-5615

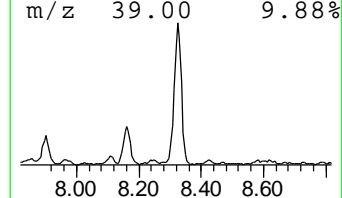
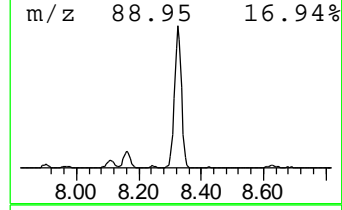
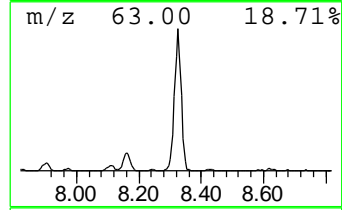
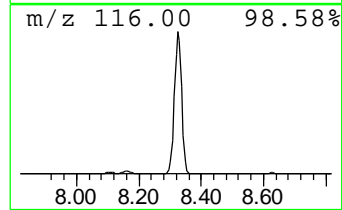
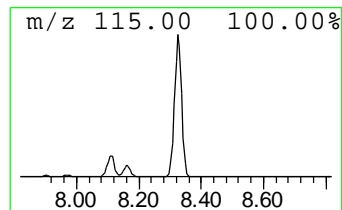
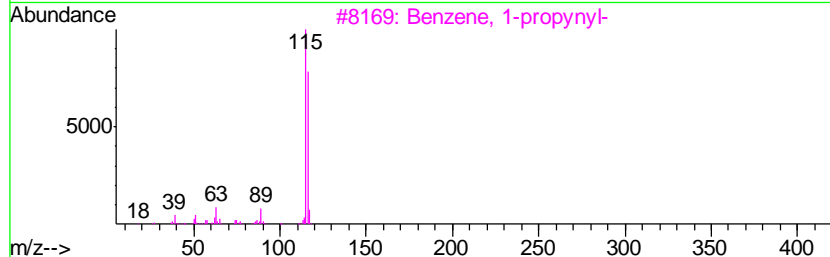
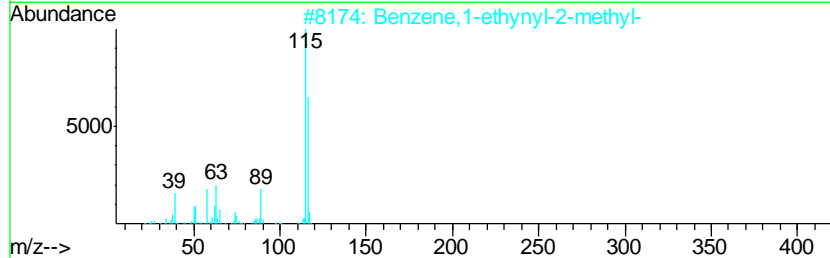
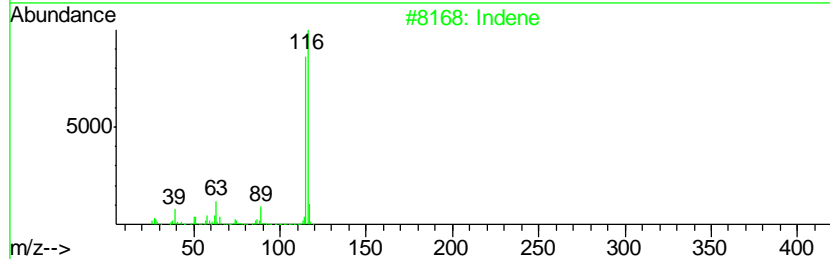
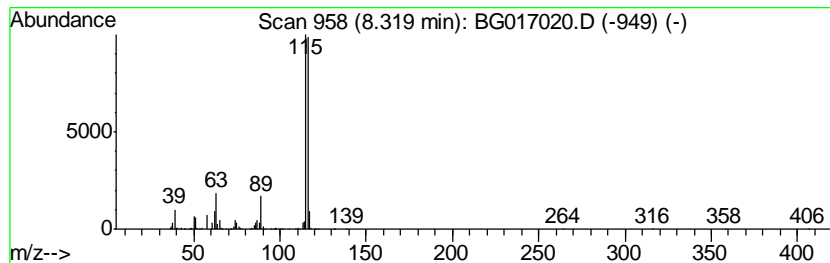
Quant Method : Z:\HPCHEM1\BNA_G\METHODS\8270-BG050515.M
 Quant Title : ASP BNA STANDARDS FOR 5 POINT CALIBRATION

TIC Library : C:\DATABASE\NIST02.L
 TIC Integration Parameters: LSCINT.P

 Peak Number 11 Indene Concentration Rank 2

R.T.	EstConc	Area	Relative to ISTD	R.T.
8.32	181.08 ng	3789060	1,4-Dichlorobenzene-d4	7.79

Hit#	of	Tentative ID	MW	MolForm	CAS#	Qual
1	5	Indene	116	C9H8	000095-13-6	96
2		Benzene,1-ethynyl-2-methyl-	116	C9H8	000766-47-2	91
3		Benzene, 1-propynyl-	116	C9H8	000673-32-5	91
4		Benzene, 1-ethynyl-4-methyl-	116	C9H8	000766-97-2	83
5		1-Propyne, 3-phenyl-	116	C9H8	010147-11-2	56



Data Path : Z:\HPCHEM1\BNA_G\DATA\BG050815\
 Data File : BG017020.D
 Acq On : 10 May 2015 11:25
 Operator : TP/IZ
 Sample : G2171-04
 Misc :
 ALS Vial : 62 Sample Multiplier: 1

Instrument :
 BNA_G
 ClientSampleId :
 DCW-WW-134-5615

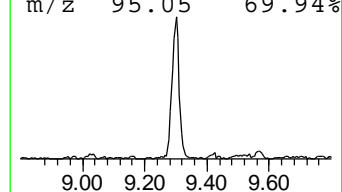
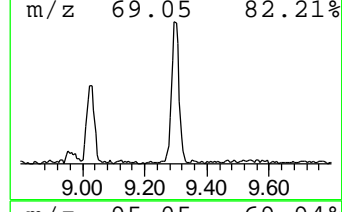
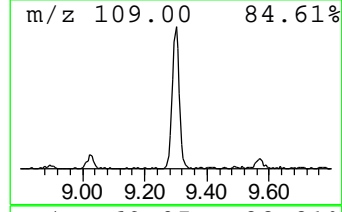
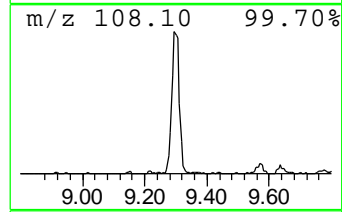
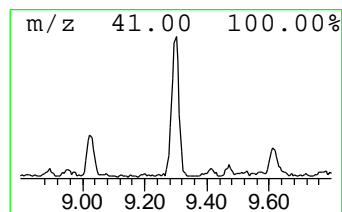
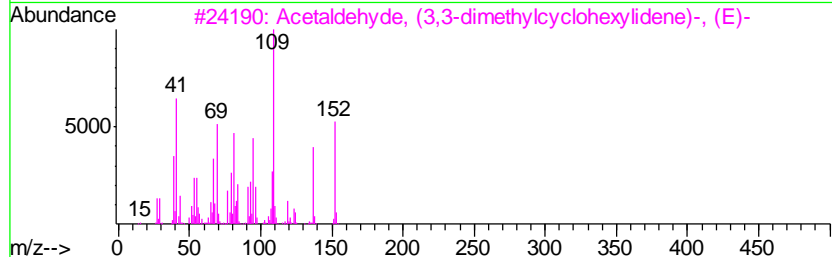
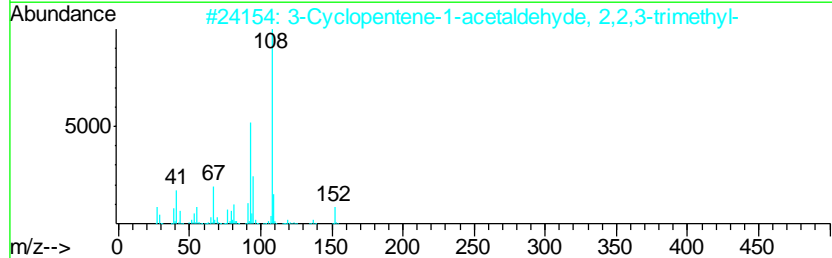
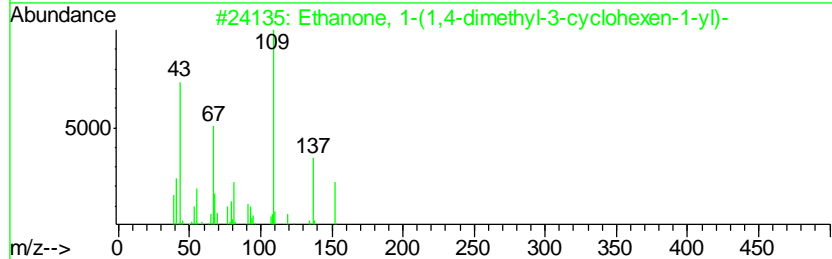
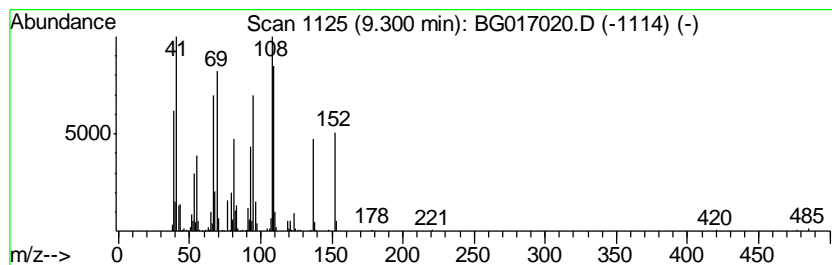
Quant Method : Z:\HPCHEM1\BNA_G\METHODS\8270-BG050515.M
 Quant Title : ASP BNA STANDARDS FOR 5 POINT CALIBRATION

TIC Library : C:\DATABASE\NIST02.L
 TIC Integration Parameters: LSCINT.P

 Peak Number 12 unknown9.30 Concentration Rank 16

R.T.	EstConc	Area	Relative to ISTD	R.T.
9.30	22.49 ng	645784	Naphthalene-d8	10.58

Hit#	of	Tentative ID	MW	MolForm	CAS#	Qual
1	5	Ethanone, 1-(1,4-dimethyl-3-cycl...	152	C10H16O	043219-68-7	46
2		3-Cyclopentene-1-acetaldehyde, 2...	152	C10H16O	004501-58-0	43
3		Acetaldehyde, (3,3-dimethylcyclo...	152	C10H16O	026532-25-2	38
4		2-Acetyl-4,4-dimethyl-cyclopent-...	152	C9H12O2	081979-96-6	38
5		Cyclohexanone, 2-(2-methylpropyl...	152	C10H16O	043108-69-6	25



Data Path : Z:\HPCHEM1\BNA_G\DATA\BG050815\
 Data File : BG017020.D
 Acq On : 10 May 2015 11:25
 Operator : TP/IZ
 Sample : G2171-04
 Misc :
 ALS Vial : 62 Sample Multiplier: 1

Instrument :
 BNA_G
 ClientSampleID :
 DCW-WW-134-5615

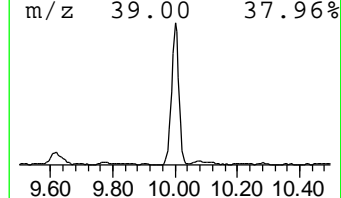
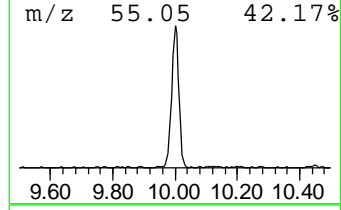
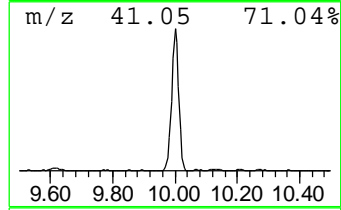
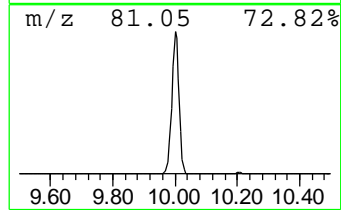
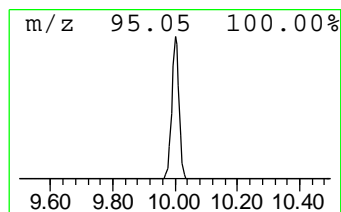
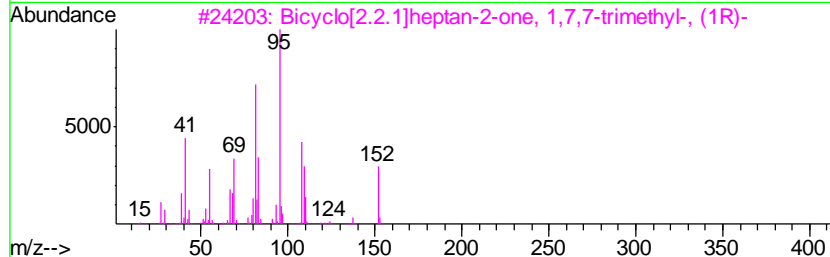
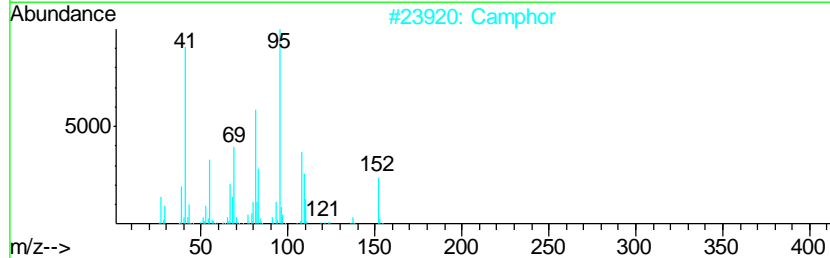
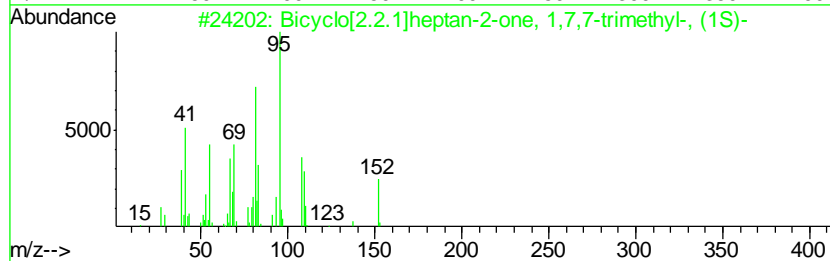
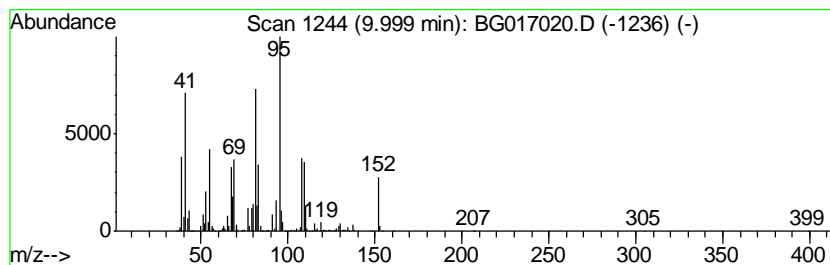
Quant Method : Z:\HPCHEM1\BNA_G\METHODS\8270-BG050515.M
 Quant Title : ASP BNA STANDARDS FOR 5 POINT CALIBRATION

TIC Library : C:\DATABASE\NIST02.L
 TIC Integration Parameters: LSCINT.P

 Peak Number 14 Bicyclo[2.2.1]heptan-2-one,... Concentration Rank 1

R.T.	EstConc	Area	Relative to ISTD	R.T.
10.00	203.43 ng	5841550	Naphthalene-d8	10.58

Hit#	of	Tentative ID	MW	MolForm	CAS#	Qual
1	5	Bicyclo[2.2.1]heptan-2-one, 1,7,...	152	C10H16O	000464-48-2	98
2		Camphor	152	C10H16O	000076-22-2	97
3		Bicyclo[2.2.1]heptan-2-one, 1,7,...	152	C10H16O	000464-49-3	97
4		Bicyclo[2.2.1]heptan-2-one, 1,7,...	152	C10H16O	021368-68-3	97
5		1,4-Pentadiene, 2,3,3-trimethyl-	110	C8H14	000756-02-5	49



Data Path : Z:\HPCHEM1\BNA_G\DATA\BG050815\
 Data File : BG017020.D
 Acq On : 10 May 2015 11:25
 Operator : TP/IZ
 Sample : G2171-04
 Misc :
 ALS Vial : 62 Sample Multiplier: 1

Instrument :
 BNA_G
 ClientSampleId :
 DCW-WW-134-5615

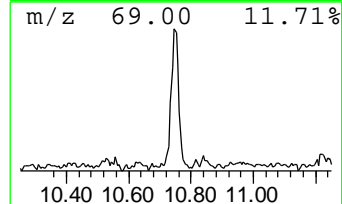
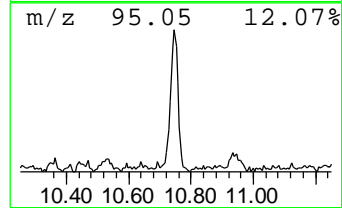
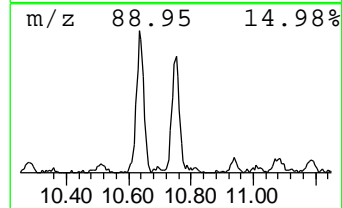
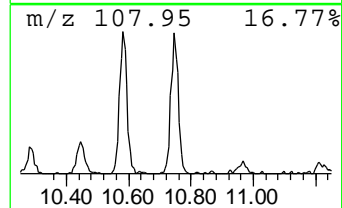
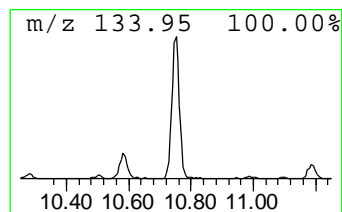
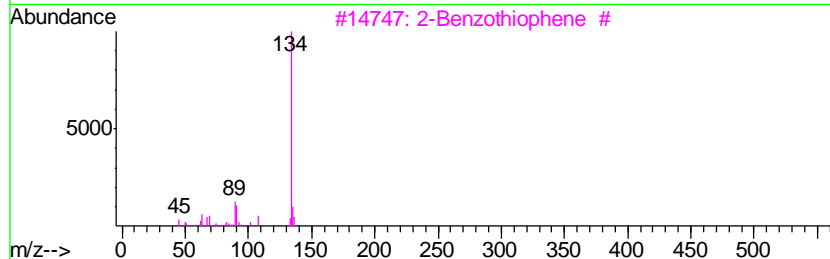
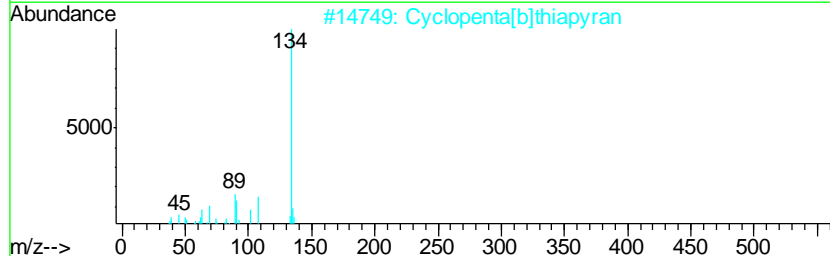
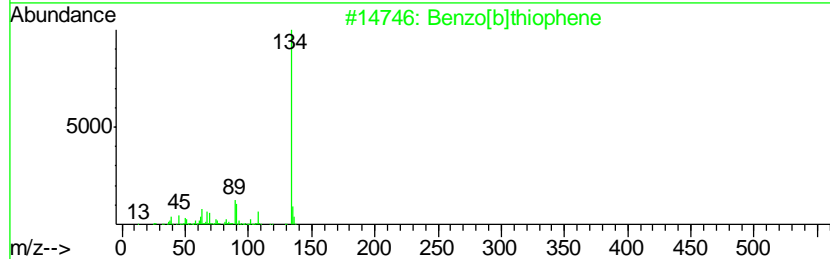
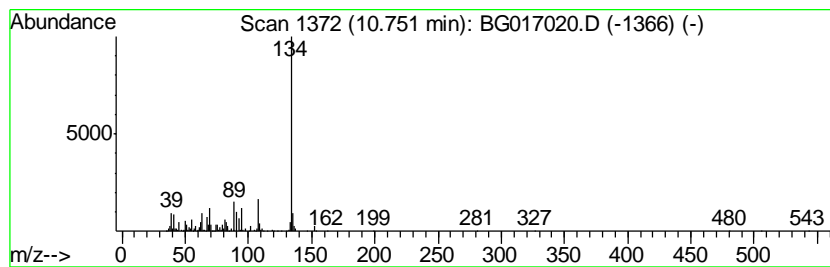
Quant Method : Z:\HPCHEM1\BNA_G\METHODS\8270-BG050515.M
 Quant Title : ASP BNA STANDARDS FOR 5 POINT CALIBRATION

TIC Library : C:\DATABASE\NIST02.L
 TIC Integration Parameters: LSCINT.P

 Peak Number 15 Benzo[b]thiophene Concentration Rank 18

R.T.	EstConc	Area	Relative to ISTD	R.T.
10.75	19.33 ng	555202	Naphthalene-d8	10.58

Hit#	of	Tentative ID	MW	MolForm	CAS#	Qual
1	5	Benzo[b]thiophene	134	C8H6S	000095-15-8	93
2		Cyclopenta[b]thiapyran	134	C8H6S	000271-17-0	90
3		2-Benzothiophene #	134	C8H6S	000270-82-6	76
4		Cyclopenta[c]thiapyran	134	C8H6S	000270-63-3	76
5		5-Benzylidene-3-(2,5-dimethylani...	338	C19H18N2O2S	302955-01-7	59



Data Path : Z:\HPCHEM1\BNA_G\DATA\BG050815\
 Data File : BG017020.D
 Acq On : 10 May 2015 11:25
 Operator : TP/IZ
 Sample : G2171-04
 Misc :
 ALS Vial : 62 Sample Multiplier: 1

Instrument :
 BNA_G
 ClientSampleID :
 DCW-WW-134-5615

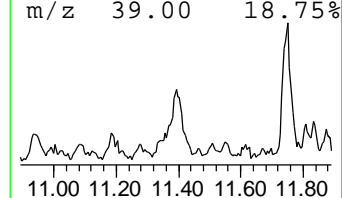
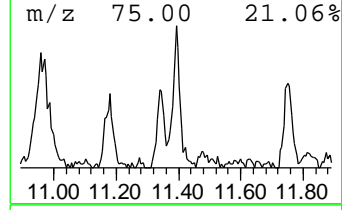
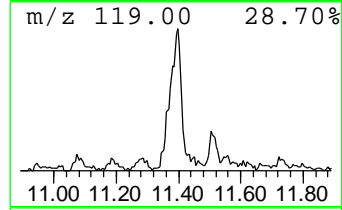
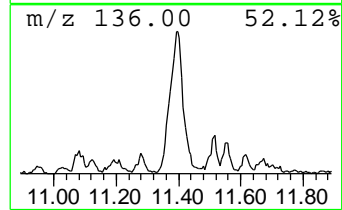
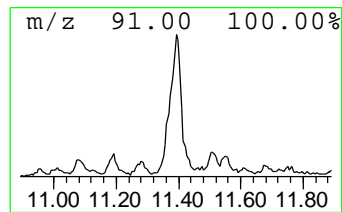
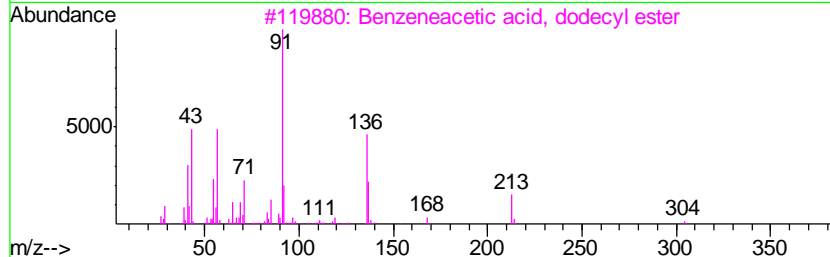
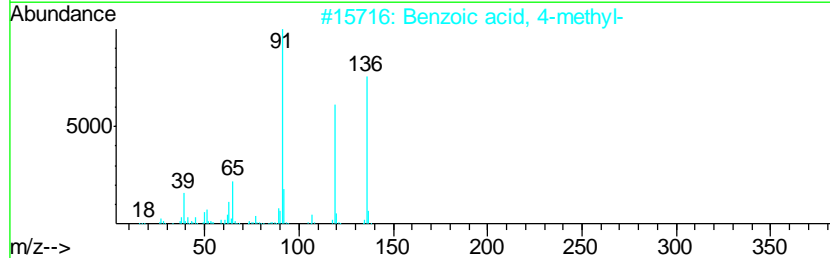
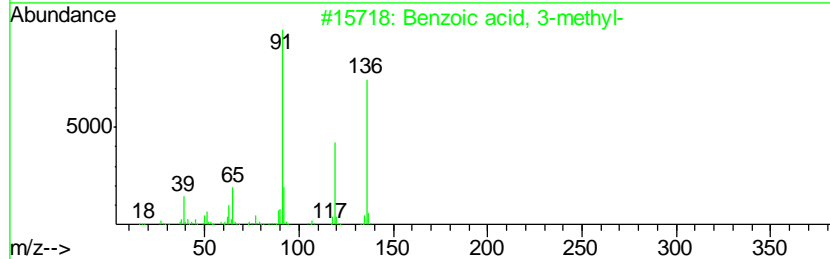
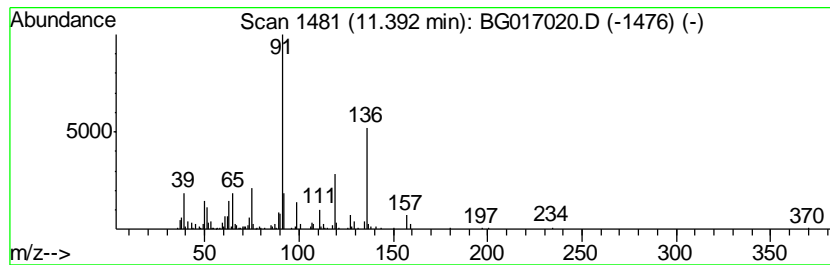
Quant Method : Z:\HPCHEM1\BNA_G\METHODS\8270-BG050515.M
 Quant Title : ASP BNA STANDARDS FOR 5 POINT CALIBRATION

TIC Library : C:\DATABASE\NIST02.L
 TIC Integration Parameters: LSCINT.P

 Peak Number 17 Benzoic acid, 3-methyl- Concentration Rank 20

R.T.	EstConc	Area	Relative to ISTD	R.T.
11.39	14.83 ng	425858	Naphthalene-d8	10.58

Hit#	of	Tentative ID	MW	MolForm	CAS#	Qual
1	5	Benzoic acid, 3-methyl-	136	C8H8O2	000099-04-7	64
2		Benzoic acid, 4-methyl-	136	C8H8O2	000099-94-5	43
3		Benzeneacetic acid, dodecyl ester	304	C20H32O2	094760-90-4	38
4		Benzeneacetic acid	136	C8H8O2	000103-82-2	35
5		4-Chlorobenzene, 2-benzyloxy-3,5...	477	C20H14Br2ClNO	142821-58-7	27



Data Path : Z:\HPCHEM1\BNA_G\DATA\BG050815\
 Data File : BG017020.D
 Acq On : 10 May 2015 11:25
 Operator : TP/IZ
 Sample : G2171-04
 Misc :
 ALS Vial : 62 Sample Multiplier: 1

Instrument :
 BNA_G
 ClientSampleID :
 DCW-WW-134-5615

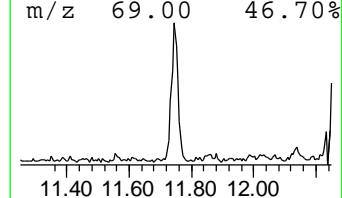
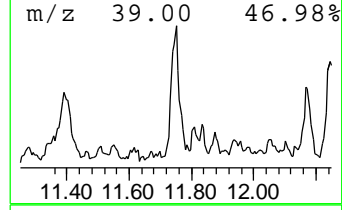
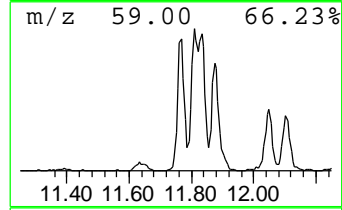
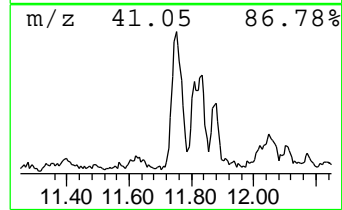
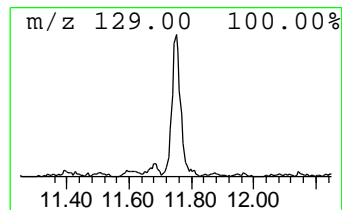
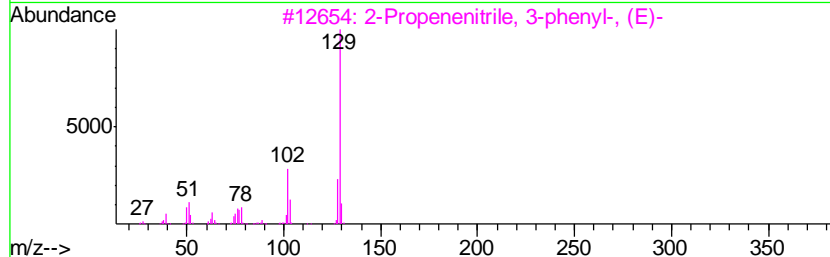
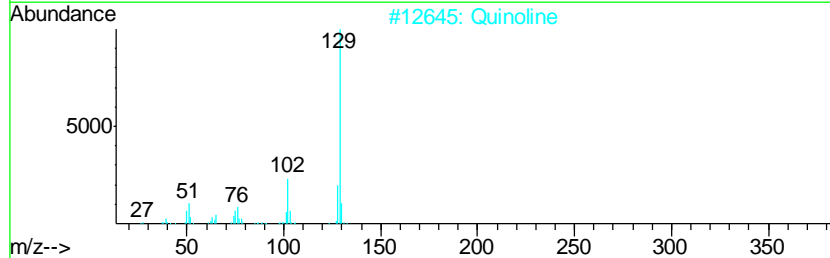
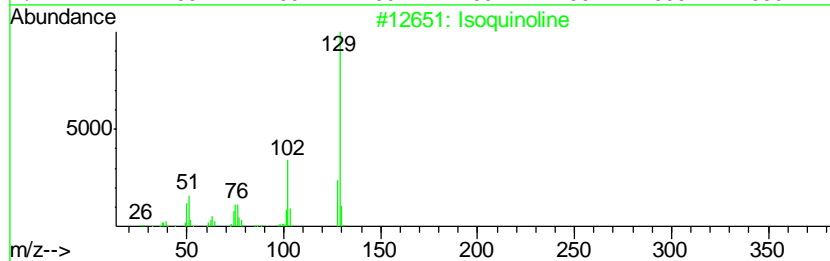
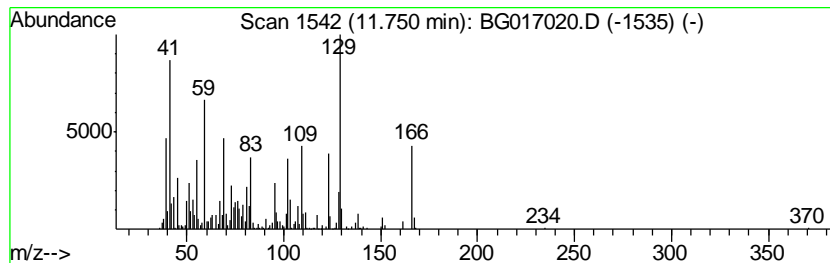
Quant Method : Z:\HPCHEM1\BNA_G\METHODS\8270-BG050515.M
 Quant Title : ASP BNA STANDARDS FOR 5 POINT CALIBRATION

TIC Library : C:\DATABASE\NIST02.L
 TIC Integration Parameters: LSCINT.P

 Peak Number 18 Isoquinoline Concentration Rank 14

R.T.	EstConc	Area	Relative to ISTD	R.T.
11.75	25.70 ng	737977	Naphthalene-d8	10.58

Hit#	of	Tentative ID	MW	MolForm	CAS#	Qual
1	5	Isoquinoline	129	C9H7N	000119-65-3	86
2		Quinoline	129	C9H7N	000091-22-5	83
3		2-Propenenitrile, 3-phenyl-, (E)-	129	C9H7N	001885-38-7	42
4		Benzeneacetonitrile, .alpha.-met...	129	C9H7N	000495-10-3	42
5		2H-Azepine-2-thione, hexahydro-	129	C6H11NS	007203-96-5	25



Data Path : Z:\HPCHEM1\BNA_G\DATA\BG050815\
 Data File : BG017020.D
 Acq On : 10 May 2015 11:25
 Operator : TP/IZ
 Sample : G2171-04
 Misc :
 ALS Vial : 62 Sample Multiplier: 1

Instrument :
 BNA_G
 ClientSampleID :
 DCW-WW-134-5615

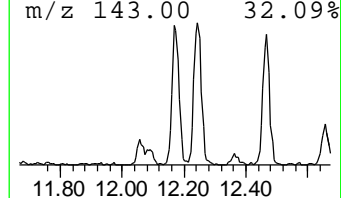
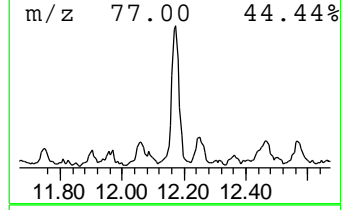
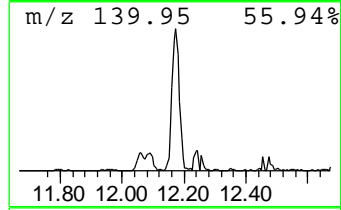
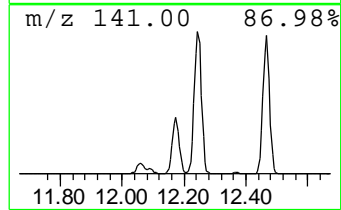
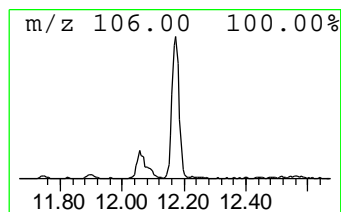
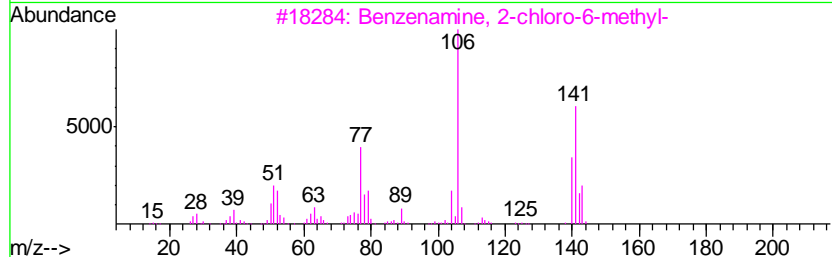
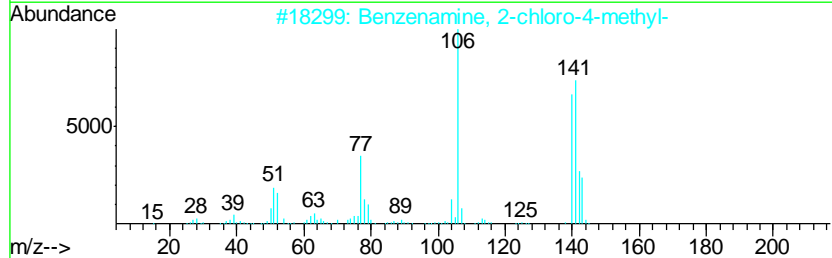
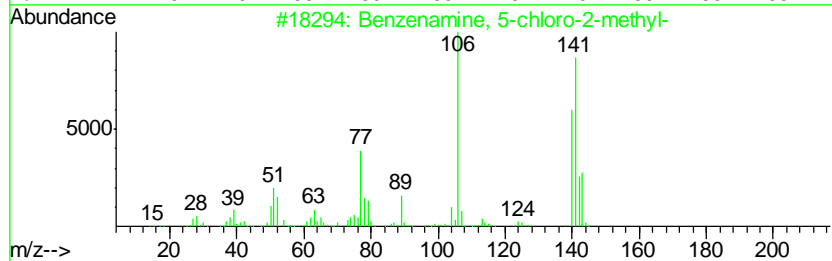
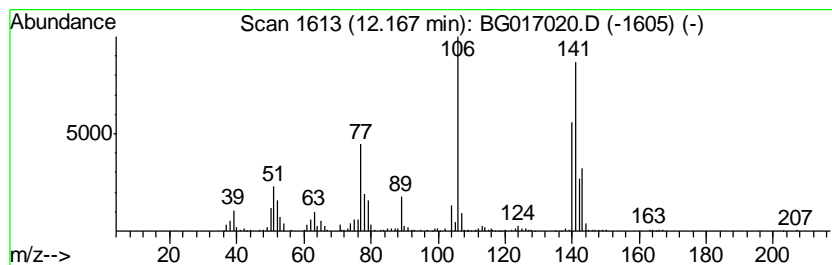
Quant Method : Z:\HPCHEM1\BNA_G\METHODS\8270-BG050515.M
 Quant Title : ASP BNA STANDARDS FOR 5 POINT CALIBRATION

TIC Library : C:\DATABASE\NIST02.L
 TIC Integration Parameters: LSCINT.P

 Peak Number 19 Benzenamine, 5-chloro-2-met... Concentration Rank 15

R.T.	EstConc	Area	Relative to ISTD	R.T.
12.17	23.98 ng	688547	Naphthalene-d8	10.58

Hit#	of	Tentative ID	MW	MolForm	CAS#	Qual
1	5	Benzenamine, 5-chloro-2-methyl-	141	C7H8ClN	000095-79-4	96
2		Benzenamine, 2-chloro-4-methyl-	141	C7H8ClN	000615-65-6	96
3		Benzenamine, 2-chloro-6-methyl-	141	C7H8ClN	000087-63-8	96
4		Benzenamine, 3-chloro-2-methyl-	141	C7H8ClN	000087-60-5	95
5		Benzenamine, 4-chloro-2-methyl-	141	C7H8ClN	000095-69-2	87



Data Path : Z:\HPCHEM1\BNA_G\DATA\BG050815\
 Data File : BG017020.D
 Acq On : 10 May 2015 11:25
 Operator : TP/IZ
 Sample : G2171-04
 Misc :
 ALS Vial : 62 Sample Multiplier: 1

Instrument :
 BNA_G
 ClientSampleId :
 DCW-WW-134-5615

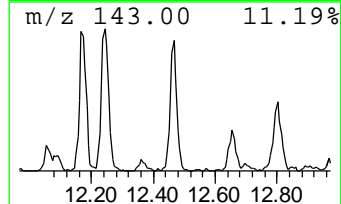
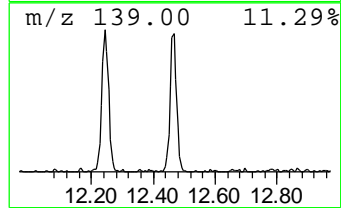
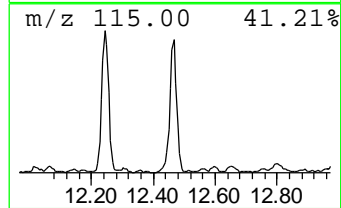
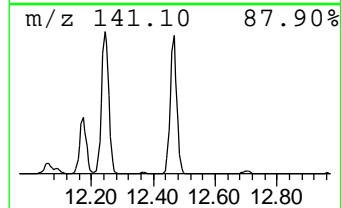
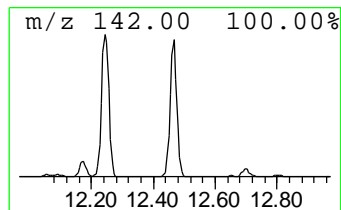
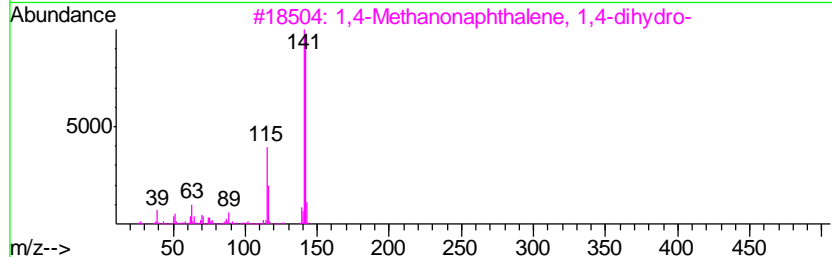
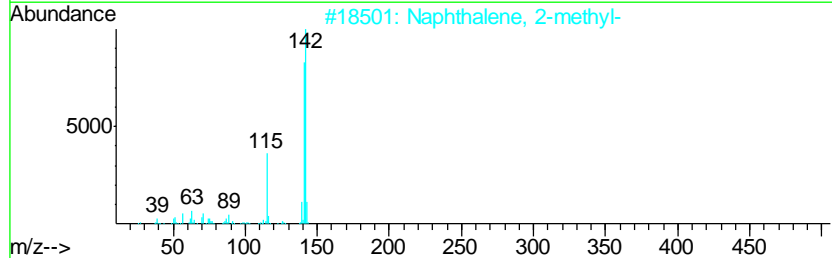
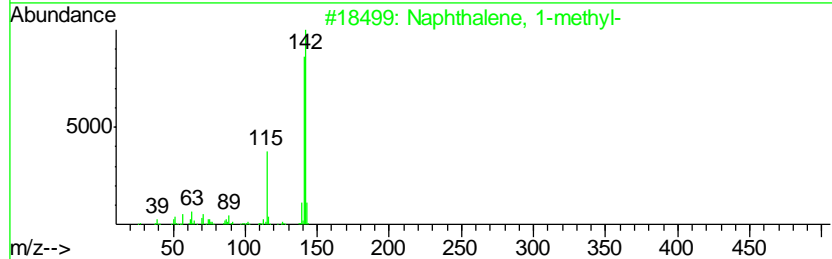
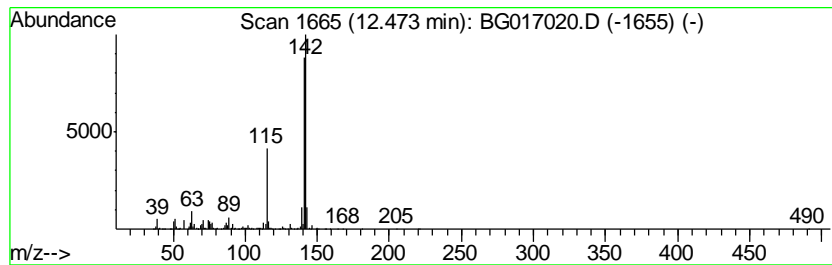
Quant Method : Z:\HPCHEM1\BNA_G\METHODS\8270-BG050515.M
 Quant Title : ASP BNA STANDARDS FOR 5 POINT CALIBRATION

TIC Library : C:\DATABASE\NIST02.L
 TIC Integration Parameters: LSCINT.P

 Peak Number 20 Naphthalene, 1-methyl- Concentration Rank 9

R.T.	EstConc	Area	Relative to ISTD	R.T.
12.47	39.93 ng	1146730	Naphthalene-d8	10.58

Hit#	of	Tentative ID	MW	MolForm	CAS#	Qual
1	5	Naphthalene, 1-methyl-	142	C11H10	000090-12-0	97
2		Naphthalene, 2-methyl-	142	C11H10	000091-57-6	95
3		1,4-Methanonaphthalene, 1,4-dihy...	142	C11H10	004453-90-1	94
4		Benzocycloheptatriene	142	C11H10	000264-09-5	91
5		Bicyclo[4.4.1]undeca-1,3,5,7,9-p...	142	C11H10	002443-46-1	90



Data Path : Z:\HPCHEM1\BNA_G\DATA\BG050815\
 Data File : BG017020.D
 Acq On : 10 May 2015 11:25
 Operator : TP/IZ
 Sample : G2171-04
 Misc :
 ALS Vial : 62 Sample Multiplier: 1

Instrument :
 BNA_G
 ClientSampleId :
 DCW-WW-134-5615

Quant Method : Z:\HPCHEM1\BNA_G\METHODS\8270-BG050515.M
 Quant Title : ASP BNA STANDARDS FOR 5 POINT CALIBRATION

TIC Library : C:\DATABASE\NIST02.L
 TIC Integration Parameters: LSCINT.P

TIC Top Hit name	RT	EstConc	Units	Response	--Internal Standard--			
					#	RT	Resp	Conc
Butane, 2-methoxy...	2.99	33.9	ng	709981	1	7.79	418501	20.0
Benzene, 1,3-dime...	5.81	135.6	ng	2836390	1	7.79	418501	20.0
Benzene, 1-ethyl-...	6.88	17.8	ng	372079	1	7.79	418501	20.0
unknown7.33	7.33	93.9	ng	1963990	1	7.79	418501	20.0
Benzene, 1,2,3-tr...	7.44	57.2	ng	1196120	1	7.79	418501	20.0
Benzofuran	7.51	25.7	ng	537959	1	7.79	418501	20.0
Indene	8.32	181.1	ng	3789060	1	7.79	418501	20.0
unknown9.30	9.30	22.5	ng	645784	2	10.58	574313	20.0
Bicyclo[2.2.1]hep...	10.00	203.4	ng	5841550	2	10.58	574313	20.0
Benzo[b]thiophene	10.75	19.3	ng	555202	2	10.58	574313	20.0
Benzoic acid, 3-m...	11.39	14.8	ng	425858	2	10.58	574313	20.0
Isoquinoline	11.75	25.7	ng	737977	2	10.58	574313	20.0
Benzenamine, 5-ch...	12.17	24.0	ng	688547	2	10.58	574313	20.0
Naphthalene, 1-me...	12.47	39.9	ng	1146730	2	10.58	574313	20.0