

Data Path : Z:\HPCHEM1\BNA\_G\DATA\BG050917\  
 Data File : BG026908.D  
 Acq On : 9 May 2017 12:27  
 Operator : SJ/MA  
 Sample : PB98799BL  
 Misc :  
 ALS Vial : 4 Sample Multiplier: 1

Instrument :  
 BNA\_G  
 ClientSampleId :  
 SBLK99

## Integration Parameters: LSCINT.P

Integrator: RTE  
 Smoothing : ON  
 Sampling : 1  
 Start Thrs: 0.1  
 Stop Thrs : 0

Filtering: 5  
 Min Area: 0.1 % of largest Peak  
 Max Peaks: 100  
 Peak Location: TOP

If leading or trailing edge < 100 prefer < Baseline drop else tangent >  
 Peak separation: 1

Method : Z:\HPCHEM1\BNA\_G\METHODS\SOM-EPA-BG042717.M  
 Title : SVOA CALIBRATION

Signal : TIC

peak #	R.T. min	first scan	max scan	last scan	PK TY	peak height	corr. area	corr. % max.	% of total
1	3.419	52	56	71	rVB2	57024	110119	2.34%	0.194%
2	4.177	182	185	189	rBV4	12038	12037	0.26%	0.021%
3	5.364	386	387	393	rVB2	5097	8265	0.18%	0.015%
4	6.210	526	531	539	rVB7	6398	15790	0.34%	0.028%
5	7.173	685	695	714	rBV	837899	1545451	32.89%	2.725%
6	7.326	714	721	734	rVV	735828	1236233	26.31%	2.180%
7	7.420	734	737	747	rVB6	5679	11455	0.24%	0.020%
8	7.538	750	757	771	rBV	907891	1599900	34.05%	2.821%
9	7.785	794	799	804	rVB5	2393	4719	0.10%	0.008%
10	8.002	828	836	848	rVB	641184	1105055	23.52%	1.949%
11	8.272	877	882	887	rVB	4038	6723	0.14%	0.012%
12	8.713	950	957	986	rBV	1151133	2116444	45.04%	3.732%
13	9.159	1025	1033	1053	rBV	830507	1496799	31.85%	2.640%
14	9.794	1136	1141	1145	rVB5	3210	5055	0.11%	0.009%
15	9.882	1145	1156	1175	rBV	708501	1270295	27.03%	2.240%
16	10.428	1240	1249	1275	rBV	1052471	2036232	43.33%	3.591%
17	10.799	1303	1312	1322	rVB	1051920	1894074	40.31%	3.340%
18	10.934	1327	1335	1363	rVB	1157503	2172984	46.25%	3.832%
19	12.385	1574	1582	1592	rBV3	18593	39055	0.83%	0.069%
20	13.231	1719	1726	1729	rBV5	4535	7514	0.16%	0.013%
21	13.360	1742	1748	1756	rVB4	2786	6338	0.13%	0.011%
22	14.018	1849	1860	1873	rBV	1822025	2746990	58.46%	4.844%
23	14.312	1899	1910	1921	rBV	2363341	3724840	79.27%	6.569%
24	14.618	1950	1962	1976	rVB2	1482794	2463707	52.43%	4.345%
25	14.835	1991	1999	2042	rBV	345269	1056560	22.49%	1.863%
26	15.246	2067	2069	2073	rVB4	4060	4775	0.10%	0.008%
27	15.399	2091	2095	2100	rBV7	2157	5295	0.11%	0.009%
28	15.605	2122	2130	2143	rBV	2855911	4332924	92.21%	7.641%
29	15.728	2143	2151	2165	rVV	503611	821657	17.49%	1.449%
30	15.846	2165	2171	2176	rVB	36472	59016	1.26%	0.104%
31	16.557	2287	2292	2295	rVV4	4597	6067	0.13%	0.011%
32	17.144	2386	2392	2398	rBV2	8050	12608	0.27%	0.022%
33	17.350	2419	2427	2437	rBV2	1603425	2474329	52.66%	4.363%
34	17.450	2437	2444	2462	rVB2	2682028	4134798	88.00%	7.292%

Data Path : Z:\HPCHEM1\BNA\_G\DATA\BG050917\  
 Data File : BG026908.D  
 Acq On : 9 May 2017 12:27  
 Operator : SJ/MA  
 Sample : PB98799BL  
 Misc :  
 ALS Vial : 4 Sample Multiplier: 1

Instrument :  
 BNA\_G  
 ClientSampleId :  
 SBLK99

## Integration Parameters: LSCINT.P

Integrator: RTE  
 Smoothing : ON  
 Sampling : 1  
 Start Thrs: 0.1  
 Stop Thrs : 0

Filtering: 5  
 Min Area: 0.1 % of largest Peak  
 Max Peaks: 100  
 Peak Location: TOP

If leading or trailing edge < 100 prefer < Baseline drop else tangent >  
 Peak separation: 1

Method : Z:\HPCHEM1\BNA\_G\METHODS\SOM-EPA-BG042717.M  
 Title : SVOA CALIBRATION

35	17.738	2490	2493	2499	rBV5	4953	9700	0.21%	0.017%
36	18.008	2534	2539	2543	rBV6	5881	9507	0.20%	0.017%
37	18.302	2585	2589	2592	rVV5	5559	8978	0.19%	0.016%
38	18.349	2592	2597	2602	rVV8	6931	11480	0.24%	0.020%
39	18.401	2602	2606	2610	rVB6	3757	6442	0.14%	0.011%
40	18.466	2610	2617	2619	rBV7	3572	7027	0.15%	0.012%
41	19.236	2746	2748	2751	rVB4	4514	4782	0.10%	0.008%
42	19.295	2751	2758	2762	rBV8	8174	14847	0.32%	0.026%
43	19.371	2762	2771	2779	rVV	32537	55660	1.18%	0.098%
44	19.512	2794	2795	2799	rBV3	4216	4759	0.10%	0.008%
45	19.624	2805	2814	2822	rVB4	25350	50466	1.07%	0.089%
46	19.729	2823	2832	2853	rBV	2970561	4287528	91.25%	7.561%
47	19.864	2853	2855	2859	rBV5	4212	4894	0.10%	0.009%
48	20.241	2918	2919	2925	rBV5	3800	6660	0.14%	0.012%
49	20.458	2953	2956	2958	rBV4	3658	4797	0.10%	0.008%
50	20.675	2989	2993	2999	rBV9	11731	16458	0.35%	0.029%
51	20.922	3034	3035	3040	rBV5	5254	6479	0.14%	0.011%
52	21.034	3051	3054	3060	rBV7	6943	10721	0.23%	0.019%
53	21.151	3072	3074	3081	rBV4	9121	11762	0.25%	0.021%
54	21.239	3087	3089	3095	rVB7	8782	13358	0.28%	0.024%
55	21.286	3095	3097	3101	rBV5	5296	8879	0.19%	0.016%
56	21.322	3101	3103	3106	rVV4	6456	7395	0.16%	0.013%
57	21.404	3113	3117	3118	rBV3	5204	6950	0.15%	0.012%
58	21.474	3125	3129	3132	rVB6	4964	7039	0.15%	0.012%
59	21.598	3142	3150	3162	rBV	1619144	2609896	55.54%	4.603%
60	21.768	3175	3179	3188	rVB9	19878	34520	0.73%	0.061%
61	21.839	3188	3191	3194	rBV5	7987	8871	0.19%	0.016%
62	22.362	3274	3280	3285	rBV4	40073	87716	1.87%	0.155%
63	22.696	3334	3337	3343	rBV8	6644	8687	0.18%	0.015%
64	23.037	3390	3395	3403	rBV2	71669	134543	2.86%	0.237%
65	23.607	3489	3492	3494	rBV3	5977	8611	0.18%	0.015%
66	23.825	3522	3529	3536	rVB	109819	227286	4.84%	0.401%
67	24.383	3621	3624	3625	rBV3	7054	7278	0.15%	0.013%
68	24.541	3639	3651	3675	rBV2	1470435	4698826	100.00%	8.286%
69	24.759	3676	3688	3713	rVB2	1017648	3347722	71.25%	5.904%
70	25.834	3861	3871	3882	rBV2	171944	524919	11.17%	0.926%
71	26.134	3915	3922	3936	rVB2	18729	75856	1.61%	0.134%

Data Path : Z:\HPCHEM1\BNA\_G\DATA\BG050917\  
Data File : BG026908.D  
Acq On : 9 May 2017 12:27  
Operator : SJ/MA  
Sample : PB98799BL  
Misc :  
ALS Vial : 4 Sample Multiplier: 1

Instrument :  
BNA\_G  
ClientSampleId :  
SBLK99

Integration Parameters: LSCINT.P  
Integrator: RTE  
Smoothing : ON Filtering: 5  
Sampling : 1 Min Area: 0.1 % of largest Peak  
Start Thrs: 0.1 Max Peaks: 100  
Stop Thrs : 0 Peak Location: TOP

If leading or trailing edge < 100 prefer < Baseline drop else tangent >  
Peak separation: 1

Method : Z:\HPCHEM1\BNA\_G\METHODS\SOM-EPA-BG042717.M  
Title : SVOA CALIBRATION

72	26.621	4003	4005	4013	rBV9	8758	21149	0.45%	0.037%
73	27.150	4083	4095	4110	rVB3	181872	642651	13.68%	1.133%
74	27.367	4131	4132	4136	rBV4	5156	6243	0.13%	0.011%
75	28.736	4352	4365	4385	rVB4	135395	577293	12.29%	1.018%
76	29.195	4440	4443	4445	rBV4	6497	7416	0.16%	0.013%
77	29.541	4499	4502	4504	rBV4	4735	4770	0.10%	0.008%
78	30.664	4677	4693	4707	rVB4	111056	542096	11.54%	0.956%
79	31.704	4868	4870	4876	rBV7	7603	8550	0.18%	0.015%

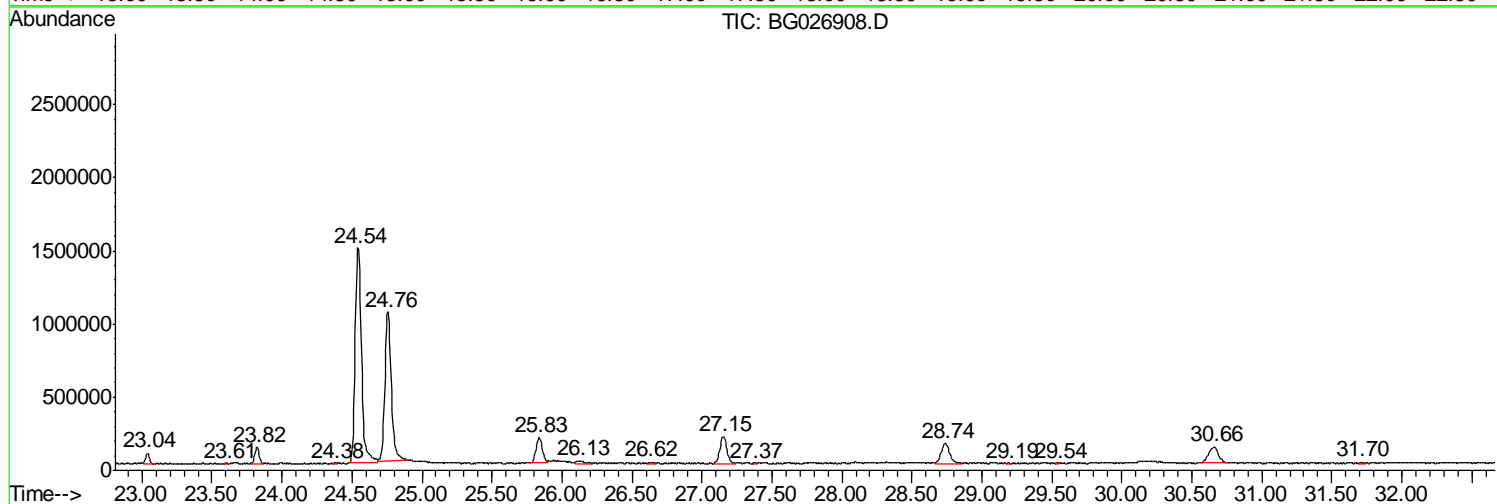
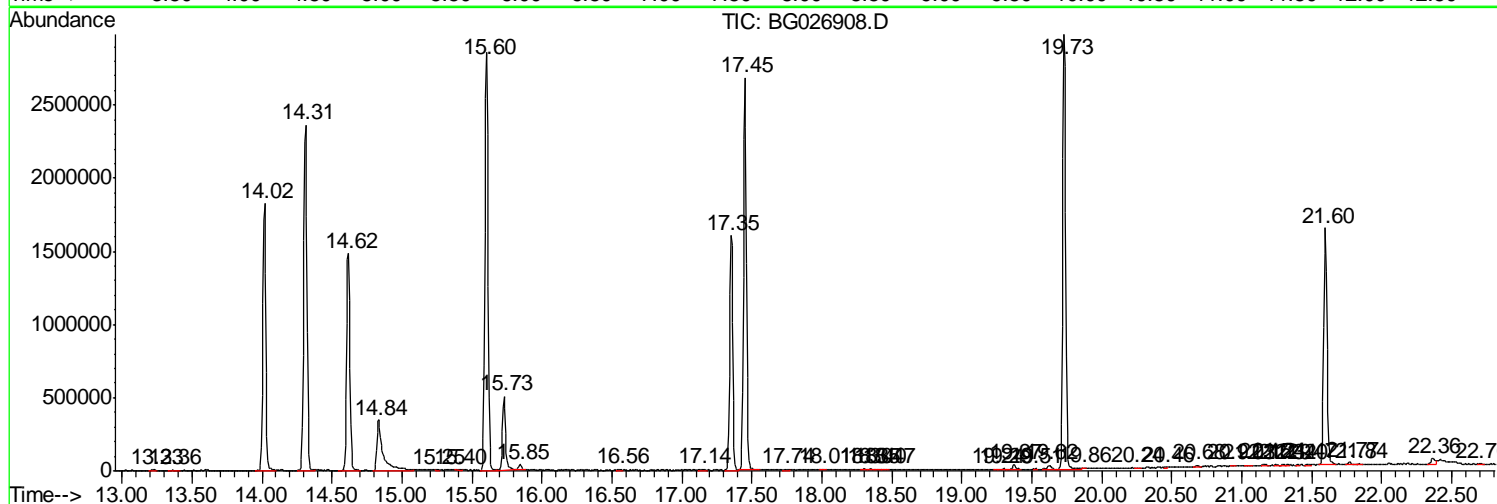
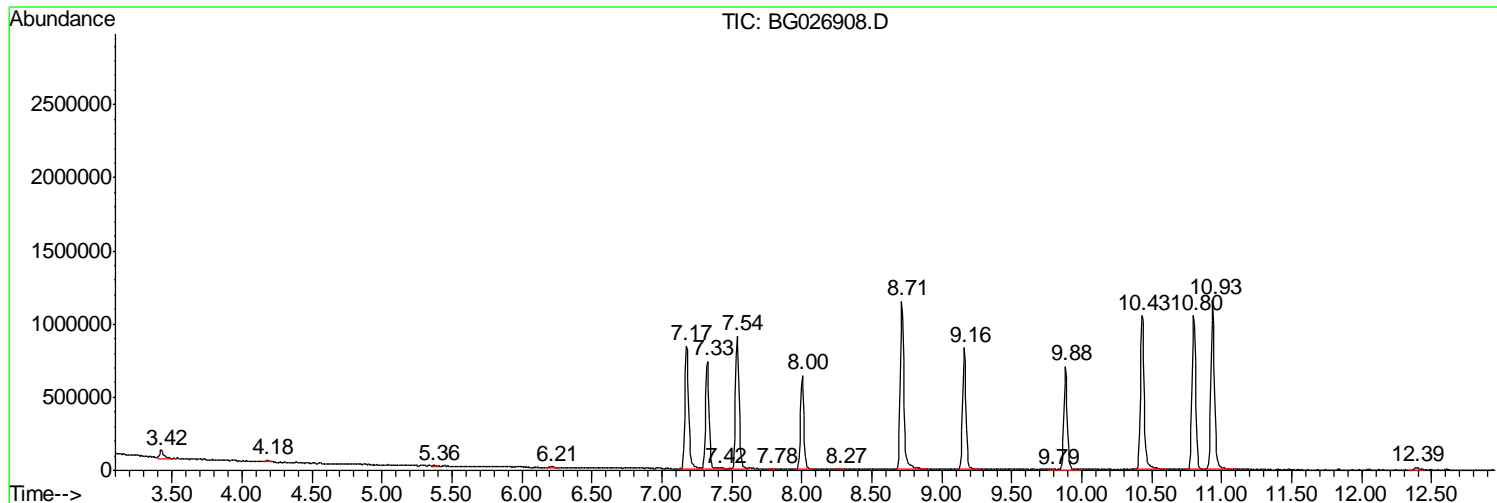
Sum of corrected areas: 56705570

Data Path : Z:\HPCHEM1\BNA\_G\DATA\BG050917\  
 Data File : BG026908.D  
 Acq On : 9 May 2017 12:27  
 Operator : SJ/MA  
 Sample : PB98799BL  
 Misc :  
 ALS Vial : 4 Sample Multiplier: 1

Instrument :  
 BNA\_G  
 ClientSampleId :  
 SBLK99

Quant Method : Z:\HPCHEM1\BNA\_G\METHODS\SOM-EPA-BG042717.M  
 Quant Title : SVOA CALIBRATION

TIC Library : C:\DATABASE\NIST11.L  
 TIC Integration Parameters: LSCINT.P



Data Path : Z:\HPCHEM1\BNA\_G\DATA\BG050917\  
 Data File : BG026908.D  
 Acq On : 9 May 2017 12:27  
 Operator : SJ/MA  
 Sample : PB98799BL  
 Misc :  
 ALS Vial : 4 Sample Multiplier: 1

Instrument :  
 BNA\_G  
 ClientSampled :  
 SBLK99

Quant Method : Z:\HPCHEM1\BNA\_G\METHODS\SOM-EPA-BG042717.M  
 Quant Title : SVOA CALIBRATION

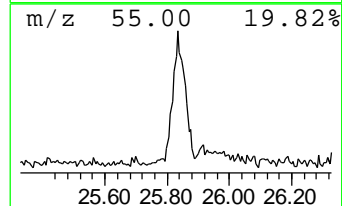
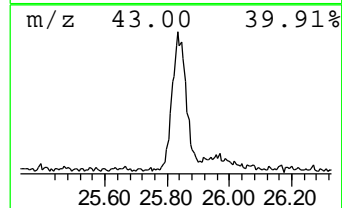
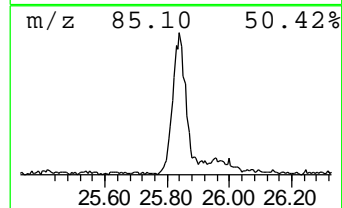
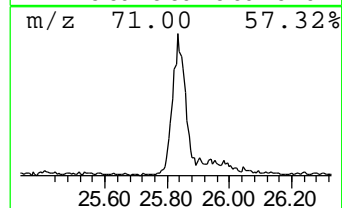
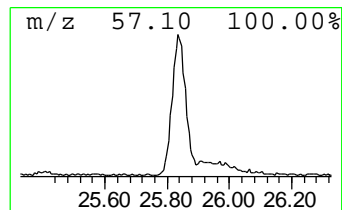
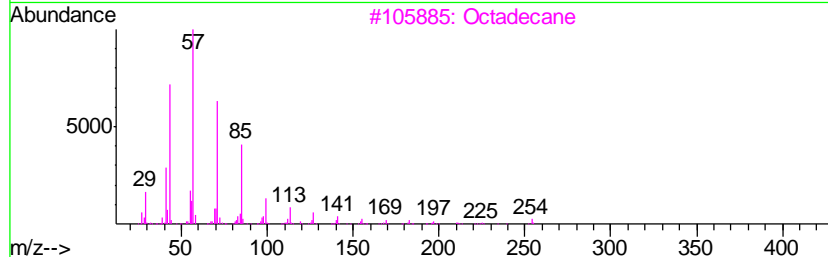
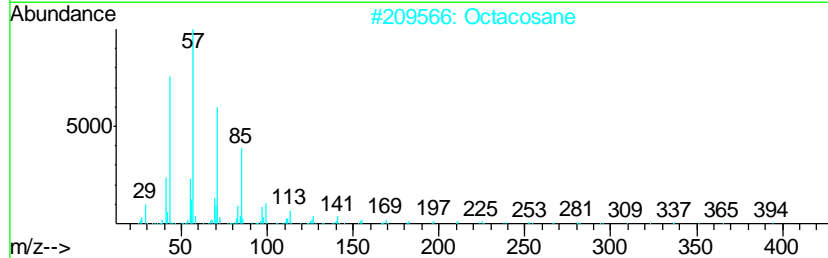
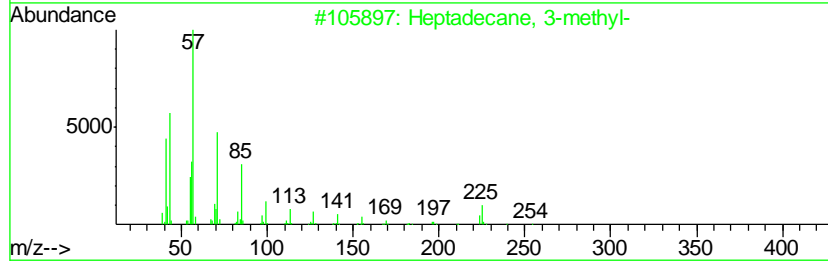
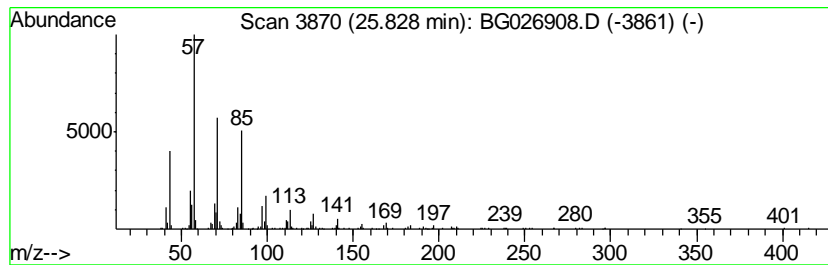
TIC Library : C:\DATABASE\NIST11.L  
 TIC Integration Parameters: LSCINT.P

\*\*\*\*\*  
 Peak Number 1 (DEL) Alkane: Straight-Chai... Concentration Rank 4

R.T.	EstConc	Area	Relative to ISTD	R.T.
25.83	3.14 ng/ul	524919	Perylene-d12	24.76

Hit#	of	Tentative ID	MW	MolForm	CAS#	Qual
1	5	Heptadecane, 3-methyl-	254	C18H38	006418-44-6	91
2		Octacosane	394	C28H58	000630-02-4	91
3		Octadecane	254	C18H38	000593-45-3	91
4		Pentadecane, 8-hexyl-	296	C21H44	013475-75-7	91
5		Hexatriacontane	507	C36H74	000630-06-8	91



Data Path : Z:\HPCHEM1\BNA\_G\DATA\BG050917\  
 Data File : BG026908.D  
 Acq On : 9 May 2017 12:27  
 Operator : SJ/MA  
 Sample : PB98799BL  
 Misc :  
 ALS Vial : 4 Sample Multiplier: 1

Instrument :  
 BNA\_G  
 ClientSampleID :  
 SBLK99

Quant Method : Z:\HPCHEM1\BNA\_G\METHODS\SOM-EPA-BG042717.M  
 Quant Title : SVOA CALIBRATION

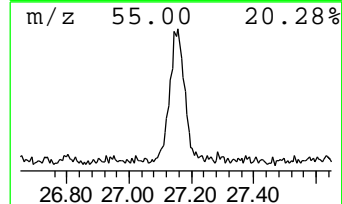
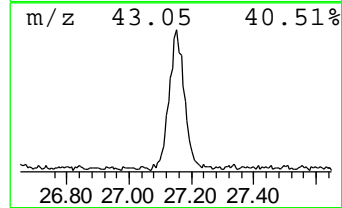
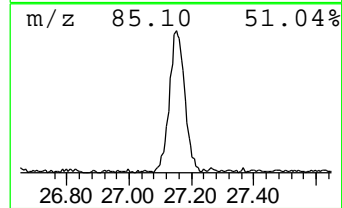
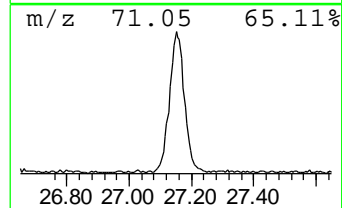
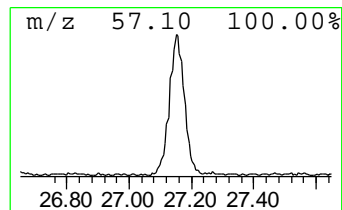
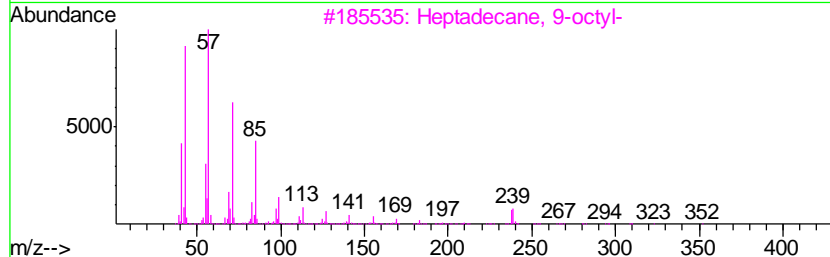
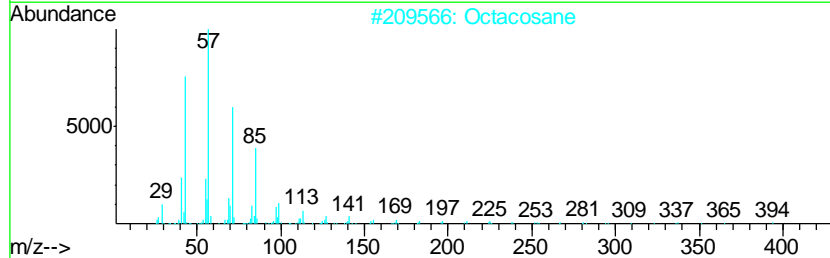
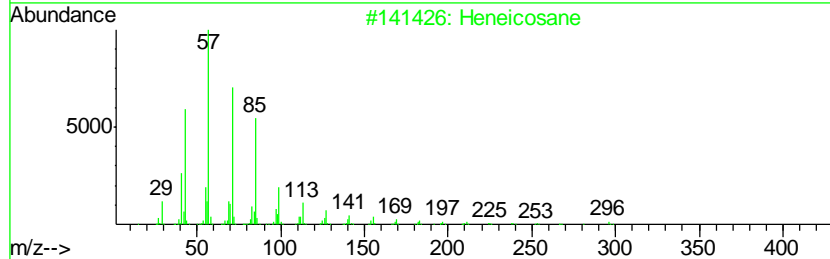
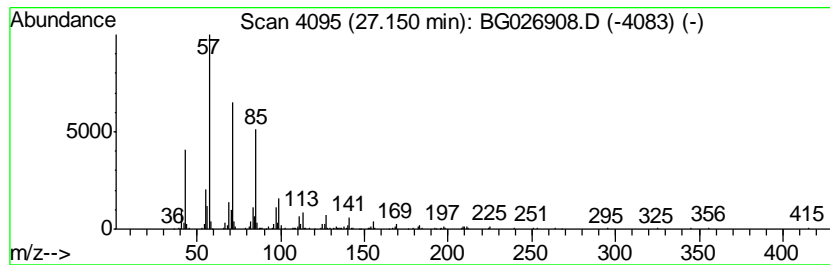
TIC Library : C:\DATABASE\NIST11.L  
 TIC Integration Parameters: LSCINT.P

\*\*\*\*\*  
 Peak Number 2 (DEL) Alkane: Straight-Chai... Concentration Rank 1

R.T.	EstConc	Area	Relative to ISTD	R.T.
27.15	3.84 ng/ul	642651	Perylene-d12	24.76

Hit#	of	Tentative ID	MW	MolForm	CAS#	Qual
1	5	Heneicosane	296	C21H44	000629-94-7	91
2		Octacosane	394	C28H58	000630-02-4	91
3		Heptadecane, 9-octyl-	352	C25H52	007225-64-1	91
4		2-methyloctacosane	408	C29H60	1000376-72-8	91
5		Triacotane	422	C30H62	000638-68-6	91



Data Path : Z:\HPCHEM1\BNA\_G\DATA\BG050917\  
 Data File : BG026908.D  
 Acq On : 9 May 2017 12:27  
 Operator : SJ/MA  
 Sample : PB98799BL  
 Misc :  
 ALS Vial : 4 Sample Multiplier: 1

Instrument :  
 BNA\_G  
 ClientSampled :  
 SBLK99

Quant Method : Z:\HPCHEM1\BNA\_G\METHODS\SOM-EPA-BG042717.M  
 Quant Title : SVOA CALIBRATION

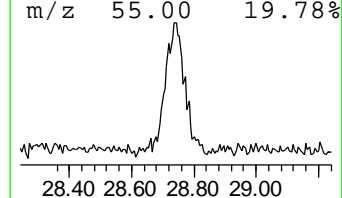
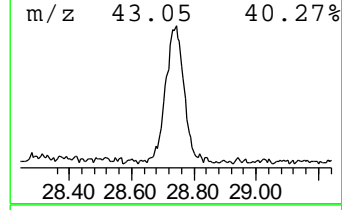
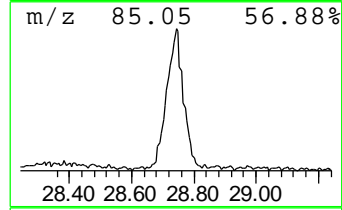
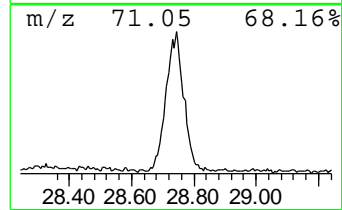
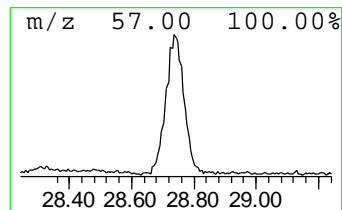
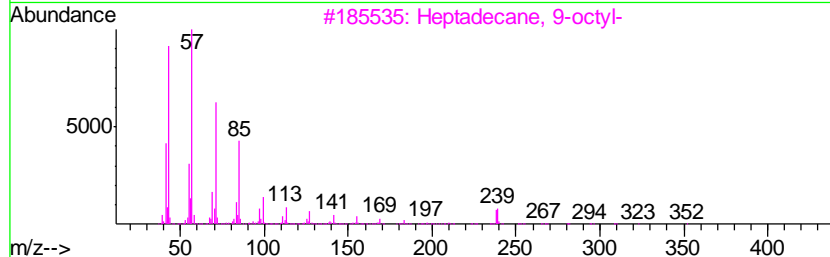
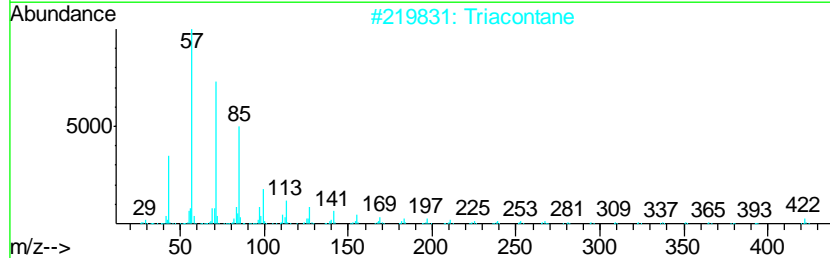
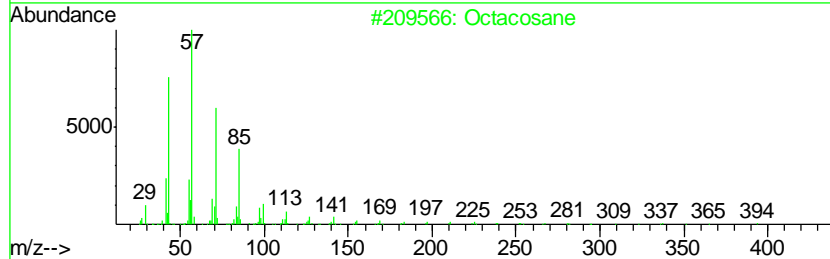
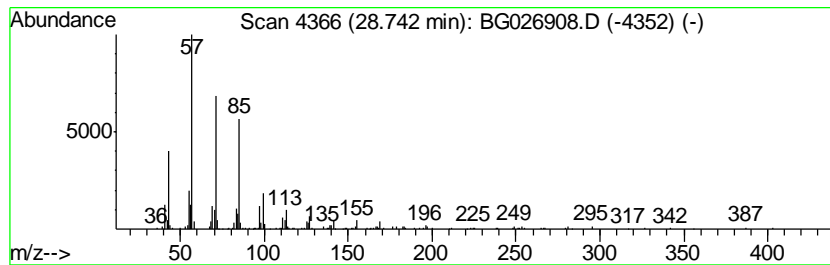
TIC Library : C:\DATABASE\NIST11.L  
 TIC Integration Parameters: LSCINT.P

\*\*\*\*\*  
 Peak Number 3 (DEL) Alkane: Straight-Chai... Concentration Rank 2

R.T.	EstConc	Area	Relative to ISTD	R.T.
28.74	3.45 ng/ul	577293	Perylene-d12	24.76

Hit#	of	Tentative ID	MW	MolForm	CAS#	Qual
1	5	Octacosane	394	C28H58	000630-02-4	87
2		triacontane	422	C30H62	000638-68-6	87
3		Heptadecane, 9-octyl-	352	C25H52	007225-64-1	86
4		Nonadecane, 2-methyl-	282	C20H42	001560-86-7	86
5		Docosane, 11-butyl-	366	C26H54	013475-76-8	86



Data Path : Z:\HPCHEM1\BNA\_G\DATA\BG050917\  
 Data File : BG026908.D  
 Acq On : 9 May 2017 12:27  
 Operator : SJ/MA  
 Sample : PB98799BL  
 Misc :  
 ALS Vial : 4 Sample Multiplier: 1

Instrument :  
 BNA\_G  
 ClientSampleID :  
 SBLK99

Quant Method : Z:\HPCHEM1\BNA\_G\METHODS\SOM-EPA-BG042717.M  
 Quant Title : SVOA CALIBRATION

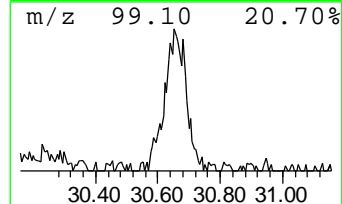
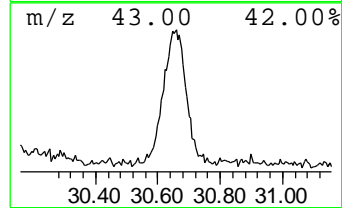
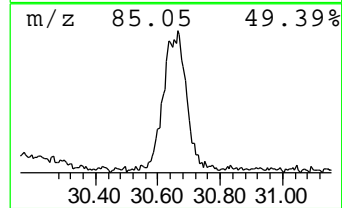
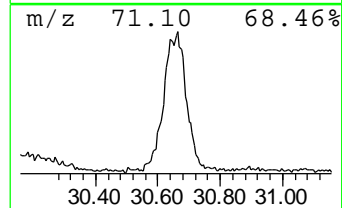
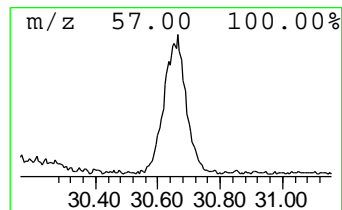
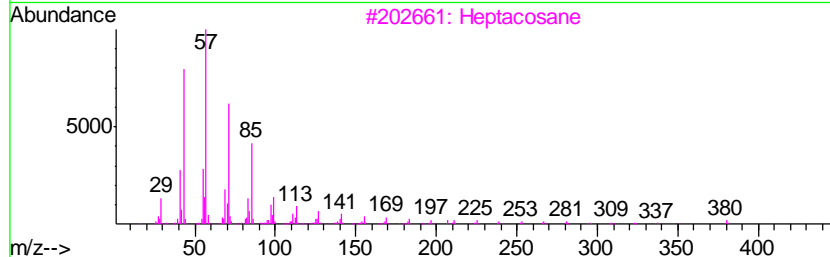
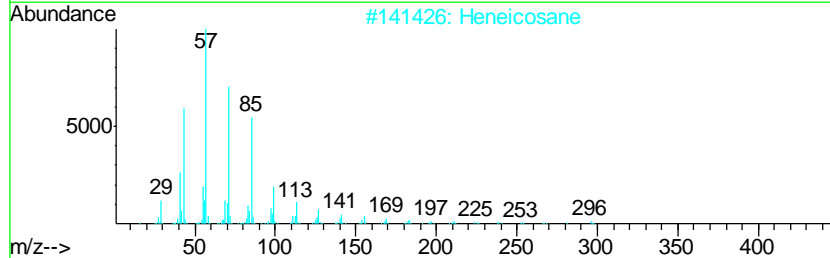
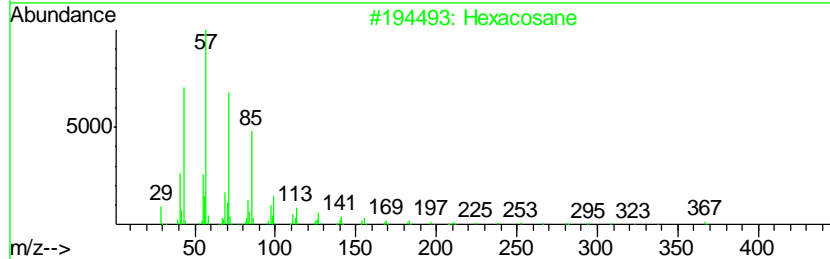
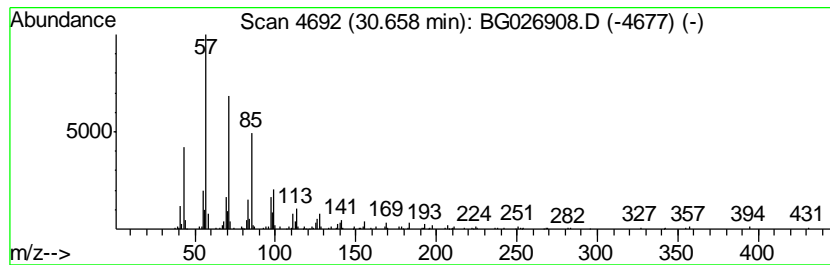
TIC Library : C:\DATABASE\NIST11.L  
 TIC Integration Parameters: LSCINT.P

\*\*\*\*\*  
 Peak Number 4 (DEL) Alkane: Straight-Chai... Concentration Rank 3

R.T.	EstConc	Area	Relative to ISTD	R.T.
30.66	3.24 ng/ul	542096	Perylene-d12	24.76

Hit#	of	Tentative ID	MW	MolForm	CAS#	Qual
1	5	Hexacosane	366	C26H54	000630-01-3	90
2		Heneicosane	296	C21H44	000629-94-7	90
3		Heptacosane	380	C27H56	000593-49-7	87
4		Docosane	310	C22H46	000629-97-0	87
5		Decane, 3,8-dimethyl-	170	C12H26	017312-55-9	87





Data Path : Z:\HPCHEM1\BNA\_G\DATA\BG050917\  
Data File : BG026908.D  
Acq On : 9 May 2017 12:27  
Operator : SJ/MA  
Sample : PB98799BL  
Misc :  
ALS Vial : 4 Sample Multiplier: 1

Instrument :  
BNA\_G  
ClientSampleId :  
SBLK99

Quant Method : Z:\HPCHEM1\BNA\_G\METHODS\SOM-EPA-BG042717.M  
Quant Title : SVOA CALIBRATION

TIC Library : C:\DATABASE\NIST11.L  
TIC Integration Parameters: LSCINT.P

TIC Top Hit name	RT	EstConc	Units	Response	--Internal Standard--			
					#	RT	Resp	Conc
(DEL) Alkane: Str...	25.83	3.1	ng/ul	524919	6	24.76	3347720	20.0
(DEL) Alkane: Str...	27.15	3.8	ng/ul	642651	6	24.76	3347720	20.0
(DEL) Alkane: Str...	28.74	3.5	ng/ul	577293	6	24.76	3347720	20.0
(DEL) Alkane: Str...	30.66	3.2	ng/ul	542096	6	24.76	3347720	20.0