

Data Path : Z:\HPCHEM1\BNA\_E\DATA\BE051017\  
 Data File : BE092987.D  
 Acq On : 10 May 2017 18:16  
 Operator : SJ/MA  
 Sample : SSTDCCC0.4EC  
 Misc :  
 ALS Vial : 2 Sample Multiplier: 1

Instrument :  
 BNA\_G  
 ClientSampleId :  
 SSTDCCC0.4EC

Quant Time: May 11 05:11:02 2017  
 Quant Method : Z:\HPCHEM1\BNA\_E\METHODS\8270-SIM-BE051017.M  
 Quant Title : ASP BNA STANDARDS FOR 5 POINT CALIBRATION  
 QLast Update : Wed May 10 03:43:15 2017  
 Response via : Initial Calibration

Internal Standards	R.T.	QIon	Response	Conc	Units	Dev(Min)
1) 1,4-Dichlorobenzene-d4	7.77	152	760	0.40	ng	0.00
7) Naphthalene-d8	10.53	136	3134	0.40	ng	0.00
13) Acenaphthene-d10	14.39	164	1509	0.40	ng	0.00
19) Phenanthrene-d10	17.13	188	3989	0.40	ng	0.00
26) Chrysene-d12	21.28	240	4497	0.40	ng	0.00
33) Perylene-d12	23.69	264	3762	0.40	ng	-0.01

## System Monitoring Compounds

4) 2-Fluorophenol	5.35	112	810	0.38	ng	0.00
5) Phenol-d6	6.95	99	1030	0.39	ng	0.00
8) Nitrobenzene-d5	8.90	82	958	0.39	ng	0.00
11) 2-Methylnaphthalene-d10	12.11	152	1688	0.38	ng	-0.02
14) 2,4,6-Tribromophenol	15.88	330	151	0.38	ng	0.00
15) 2-Fluorobiphenyl	13.01	172	2306	0.41	ng	0.00
24) Fluoranthene-d10	19.15	212	4112	0.40	ng	0.00
28) Terphenyl-d14	19.73	244	2671	0.39	ng	0.00

## Target Compounds

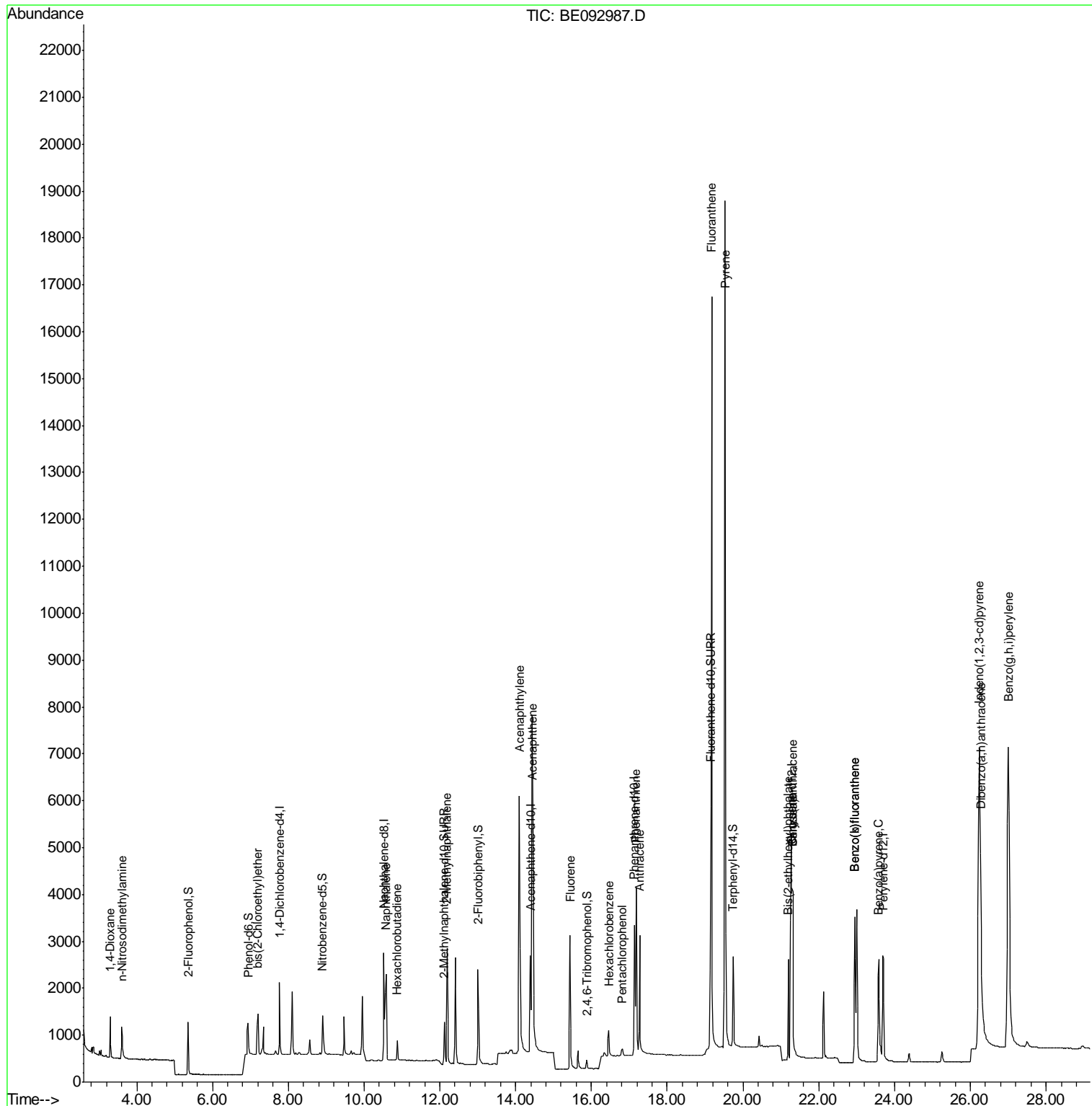
Target Compounds	R.T.	QIon	Response	Conc	Units	Qvalue
2) 1,4-Dioxane	3.31	88	574	0.36	ng	98
3) n-Nitrosodimethylamine	3.61	42	503	0.38	ng	99
6) bis(2-Chloroethyl)ether	7.20	93	985	0.38	ng	# 99
9) Naphthalene	10.58	128	3219	0.38	ng	100
10) Hexachlorobutadiene	10.87	225	430	0.36	ng	97
12) 2-Methylnaphthalene	12.19	142	1870	0.39	ng	99
16) Acenaphthylene	14.10	152	9374	0.37	ng	100
17) Acenaphthene	14.46	154	1798	0.38	ng	99
18) Fluorene	15.44	166	2254	0.39	ng	99
20) Hexachlorobenzene	16.47	284	693	0.37	ng	# 100
21) Pentachlorophenol	16.81	266	187	0.43	ng	98
22) Phenanthrene	17.18	178	4422	0.39	ng	100
23) Anthracene	17.27	178	3525	0.39	ng	100
25) Fluoranthene	19.17	202	21359	0.40	ng	# 99
27) Pyrene	19.53	202	23108	0.38	ng	# 99
29) Benzo(a)anthracene	21.32	228	4648	0.43	ng	99
30) Chrysene	21.32	228	5179	0.36	ng	98
31) Bis(2-ethylhexyl)phthalate	21.20	149	2007	0.49	ng	99
32) Indeno(1,2,3-cd)pyrene	26.24	276	17196	0.35	ng	100
34) Benzo(b)fluoranthene	22.95	252	4383	0.38	ng	99
35) Benzo(k)fluoranthene	22.95	252	4383	0.35	ng	97
36) Benzo(a)pyrene	23.59	252	3910	0.36	ng	99
37) Dibenzo(a,h)anthracene	26.27	278	3550	0.33	ng	98
38) Benzo(g,h,i)perylene	27.00	276	16373	0.35	ng	100

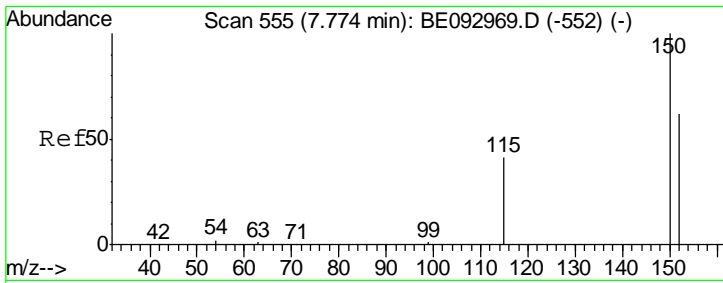
(#) = qualifier out of range (m) = manual integration (+) = signals summed

Data Path : Z:\HPCHEM1\BNA\_E\DATA\BE051017\  
 Data File : BE092987.D  
 Acq On : 10 May 2017 18:16  
 Operator : SJ/MA  
 Sample : SSTDCCC0.4EC  
 Misc :  
 ALS Vial : 2 Sample Multiplier: 1

Instrument :  
 BNA\_G  
 Client Sampled :  
 SSTDCCC0.4EC

Quant Time: May 11 05:11:02 2017  
 Quant Method : Z:\HPCHEM1\BNA\_E\METHODS\8270-SIM-BE051017.M  
 Quant Title : ASP BNA STANDARDS FOR 5 POINT CALIBRATION  
 QLast Update : Wed May 10 03:43:15 2017  
 Response via : Initial Calibration

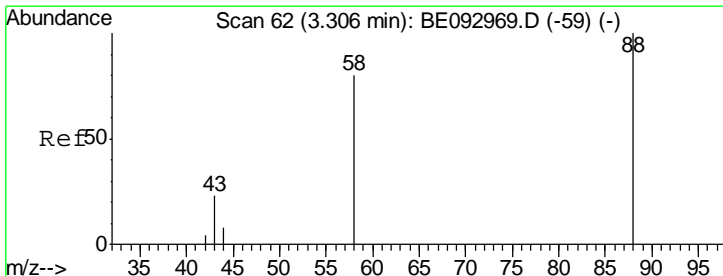
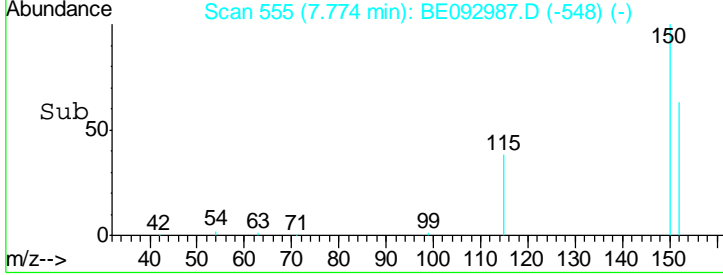
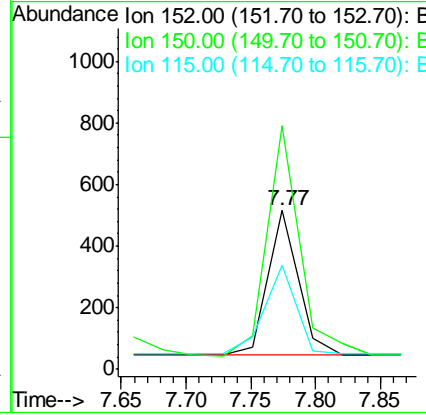
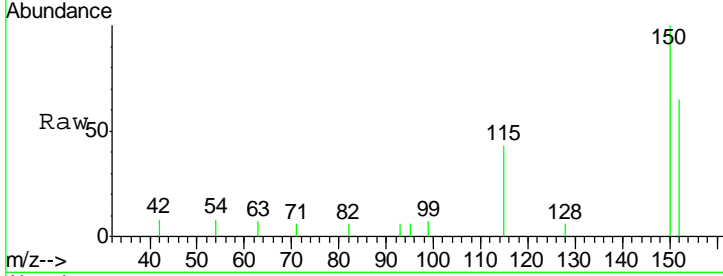




#1  
 1,4-Dichlorobenzene-d4  
 Concen: 0.40 ng  
 RT: 7.77 min Scan# 555  
 Delta R.T. 0.00 min  
 Lab File: BE092987.D  
 Acq: 10 May 2017 18:16

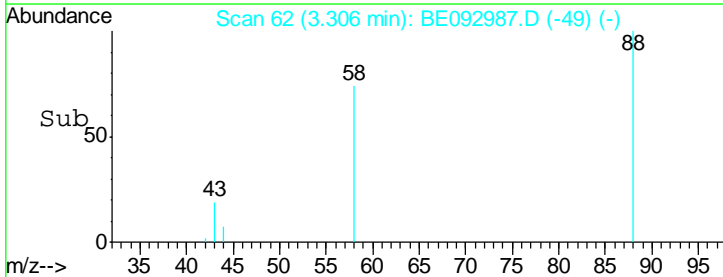
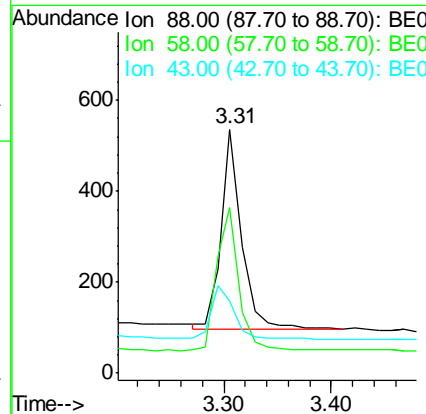
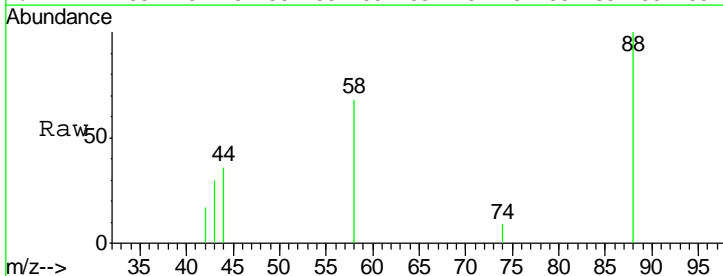
**Instrument :**  
 BNA\_G  
**ClientSampled :**  
 SSTDCCC0.4EC

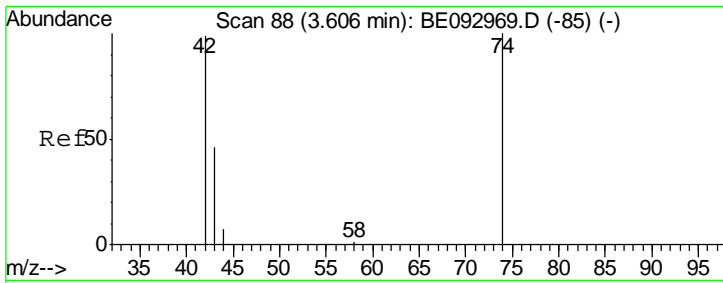
Tgt Ion	Resp	Lower	Upper
152	100		
150	153.3	125.1	187.7
115	65.3	55.7	83.5



#2  
 1,4-Dioxane  
 Concen: 0.36 ng  
 RT: 3.31 min Scan# 62  
 Delta R.T. 0.00 min  
 Lab File: BE092987.D  
 Acq: 10 May 2017 18:16

Tgt Ion	Resp	Lower	Upper
88	100		
58	78.6	62.2	93.4
43	31.7	23.2	34.8

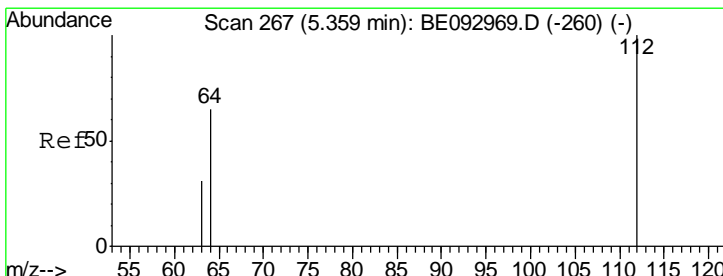
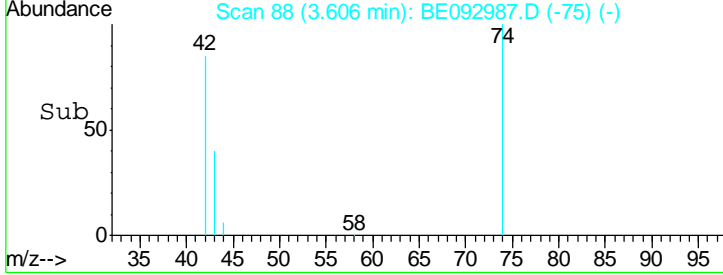
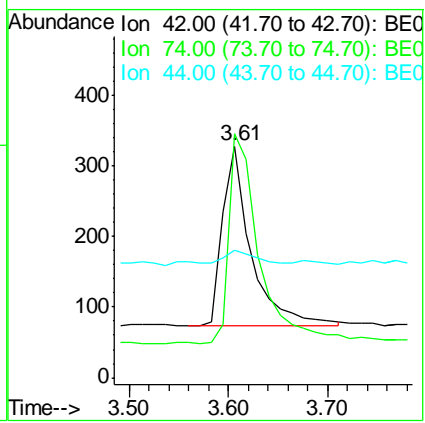
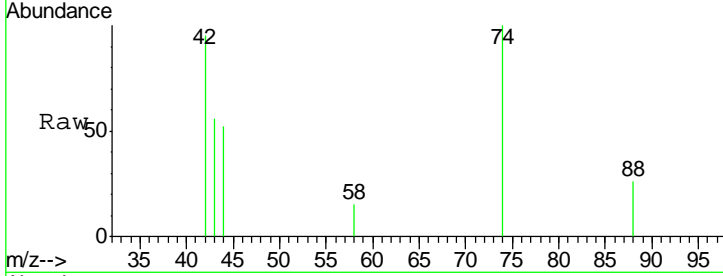




#3  
 n-Nitrosodimethylamine  
 Concen: 0.38 ng  
 RT: 3.61 min Scan# 88  
 Delta R.T. 0.00 min  
 Lab File: BE092987.D  
 Acq: 10 May 2017 18:16

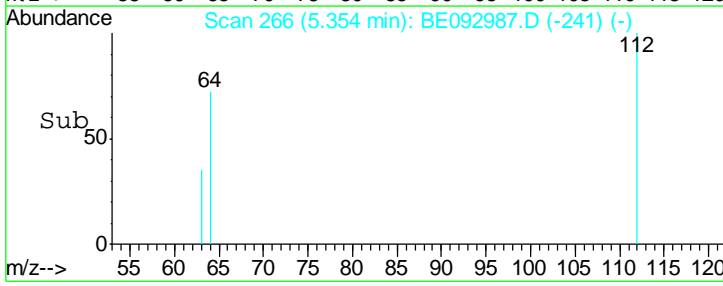
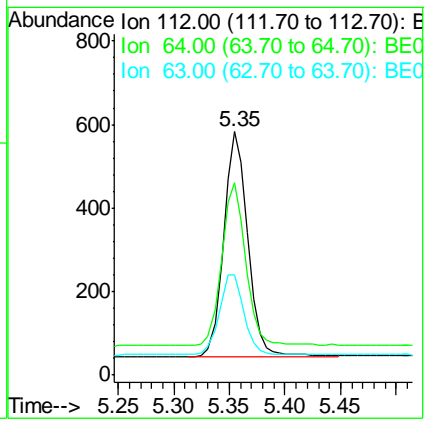
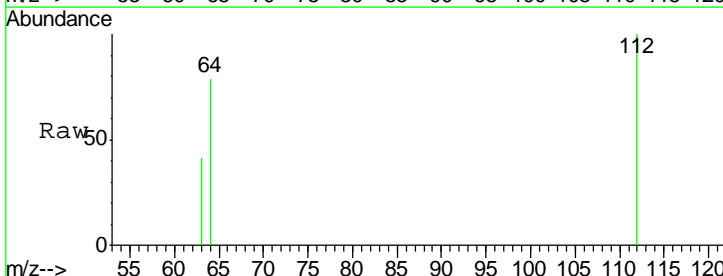
**Instrument :**  
 BNA\_G  
**ClientSampleId :**  
 SSTDCCC0.4EC

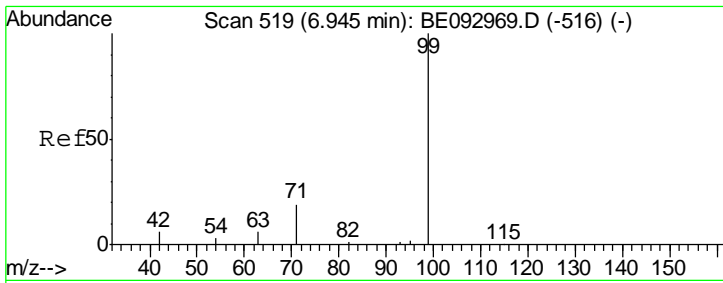
Tgt Ion	Resp	Lower	Upper
42	100		
74	123.5	99.1	148.7
44	8.3	7.4	11.2



#4  
 2-Fluorophenol  
 Concen: 0.38 ng  
 RT: 5.35 min Scan# 266  
 Delta R.T. -0.00 min  
 Lab File: BE092987.D  
 Acq: 10 May 2017 18:16

Tgt Ion	Resp	Lower	Upper
112	100		
64	71.6	56.4	84.6
63	36.8	29.3	43.9

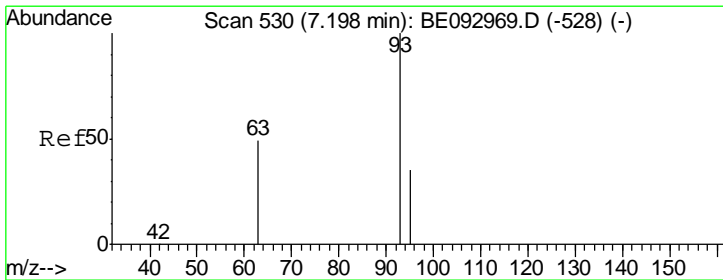
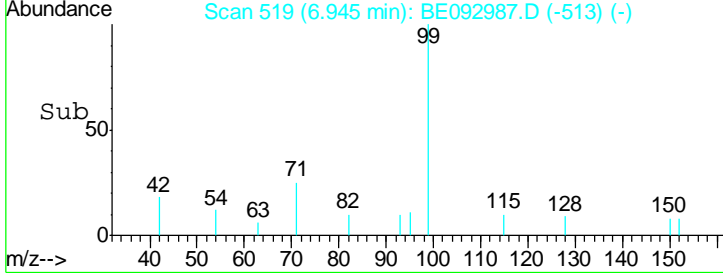
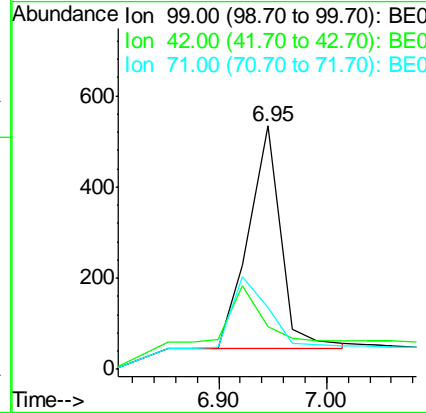
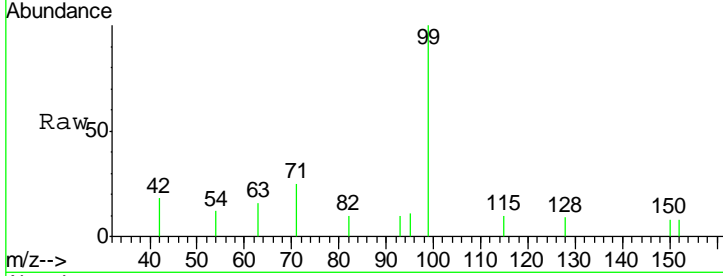




#5  
 Phenol-d6  
 Concen: 0.39 ng  
 RT: 6.95 min Scan# 519  
 Delta R.T. 0.00 min  
 Lab File: BE092987.D  
 Acq: 10 May 2017 18:16

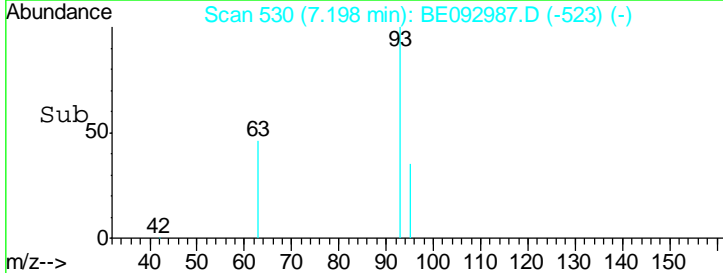
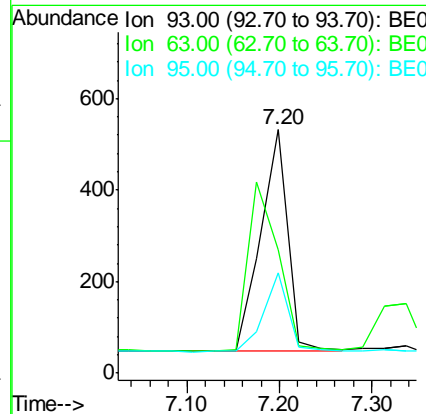
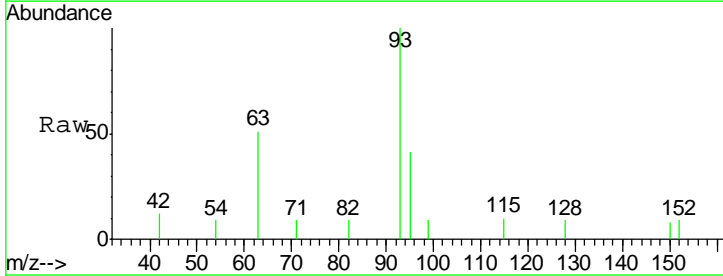
**Instrument :**  
 BNA\_G  
**ClientSampled :**  
 SSTDCCC0.4EC

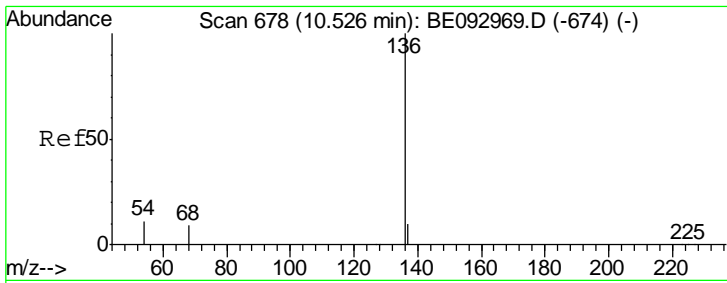
Tgt Ion	Resp	Lower	Upper
99	1030		
42	0.0	0.0	0.0
71	0.0	0.0	0.0



#6  
 bis(2-Chloroethyl)ether  
 Concen: 0.38 ng  
 RT: 7.20 min Scan# 530  
 Delta R.T. 0.00 min  
 Lab File: BE092987.D  
 Acq: 10 May 2017 18:16

Tgt Ion	Resp	Lower	Upper
93	985		
63	0.0	0.0	0.0
95	32.4	25.4	38.0

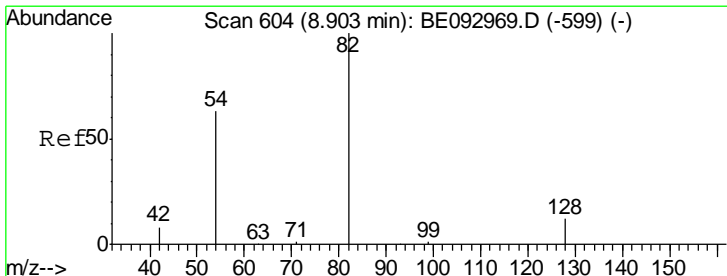
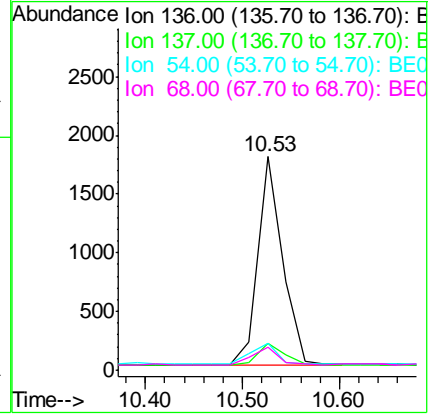
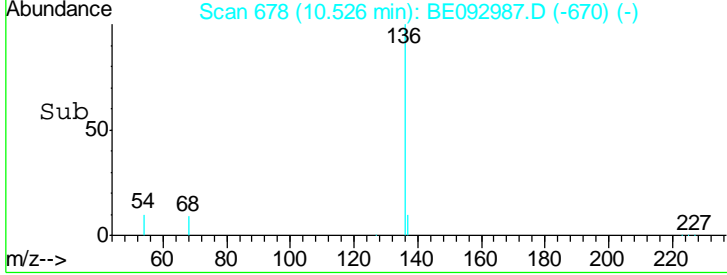
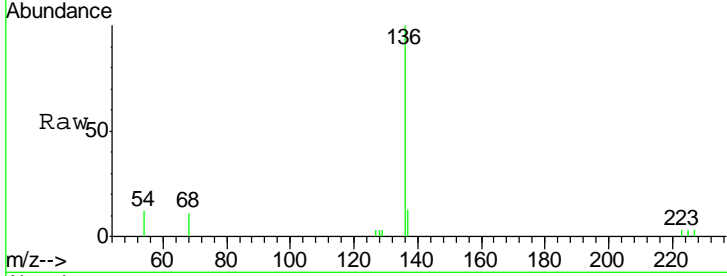




#7  
 Naphthalene-d8  
 Concen: 0.40 ng  
 RT: 10.53 min Scan# 678  
 Delta R.T. -0.00 min  
 Lab File: BE092987.D  
 Acq: 10 May 2017 18:16

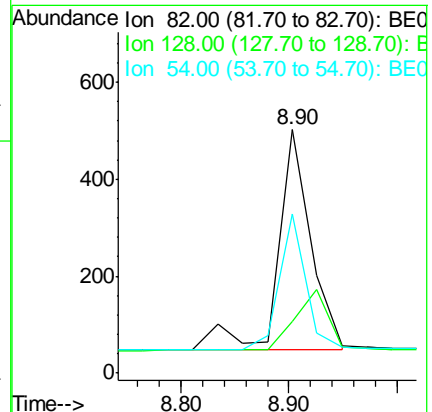
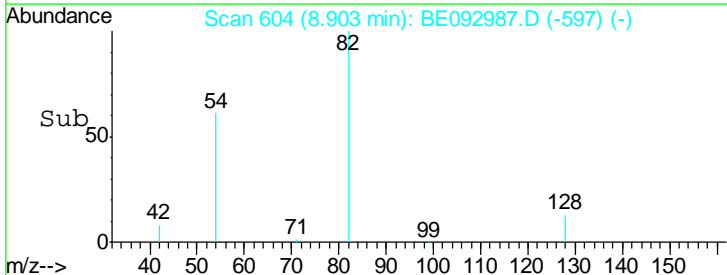
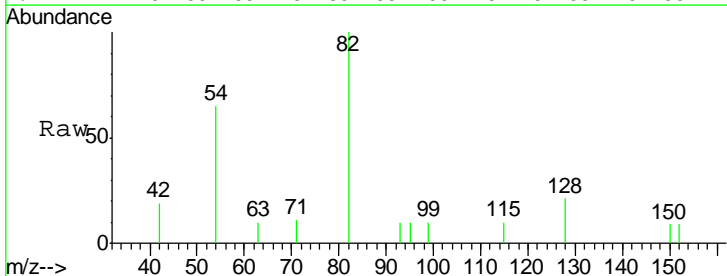
**Instrument :**  
 BNA\_G  
**ClientSampleId :**  
 SSTDCCC0.4EC

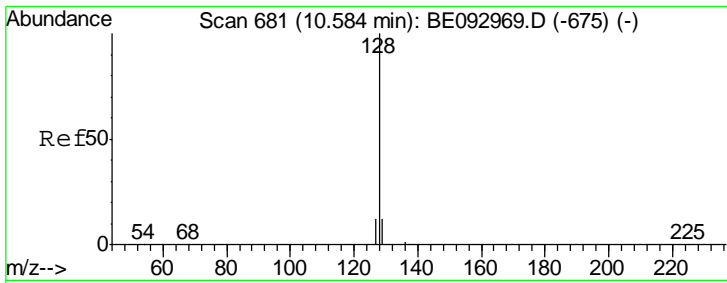
Tgt Ion	Resp	Lower	Upper
136	3134		
137	12.8	9.8	14.8
54	12.5	10.3	15.5
68	11.0	9.0	13.4



#8  
 Nitrobenzene-d5  
 Concen: 0.39 ng  
 RT: 8.90 min Scan# 604  
 Delta R.T. 0.00 min  
 Lab File: BE092987.D  
 Acq: 10 May 2017 18:16

Tgt Ion	Resp	Lower	Upper
82	958		
128	21.1	17.0	25.4
54	65.1	53.8	80.6

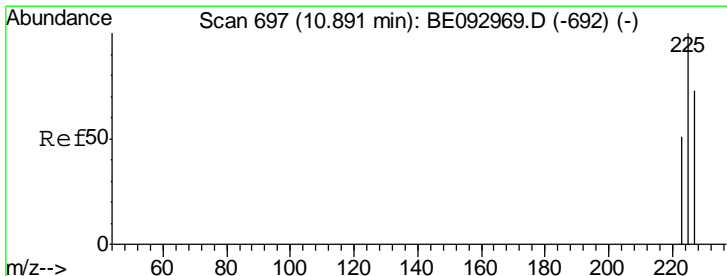
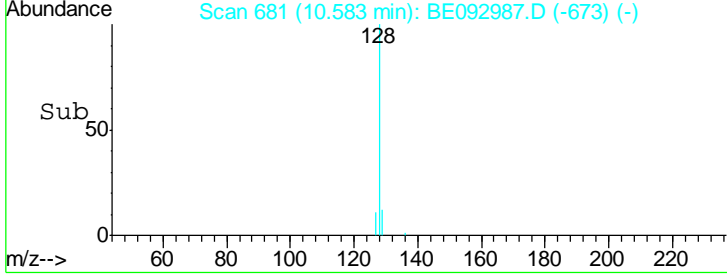
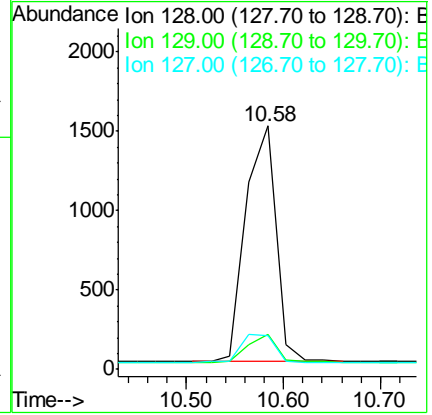
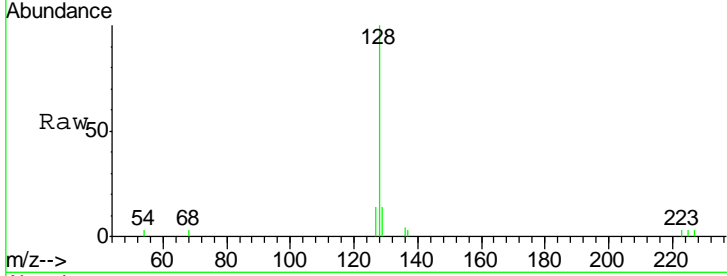




#9  
 Naphthalene  
 Concen: 0.38 ng  
 RT: 10.58 min Scan# 681  
 Delta R.T. -0.00 min  
 Lab File: BE092987.D  
 Acq: 10 May 2017 18:16

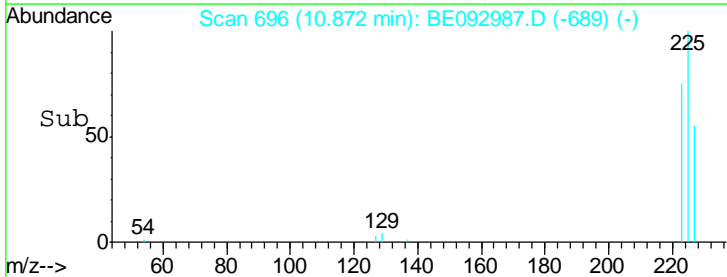
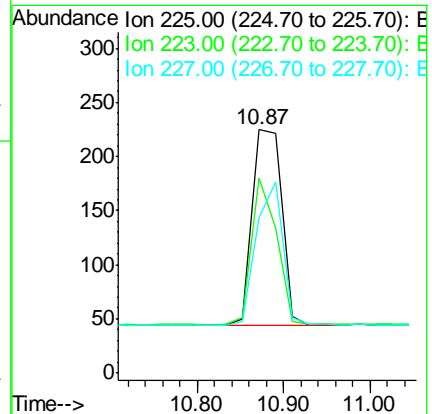
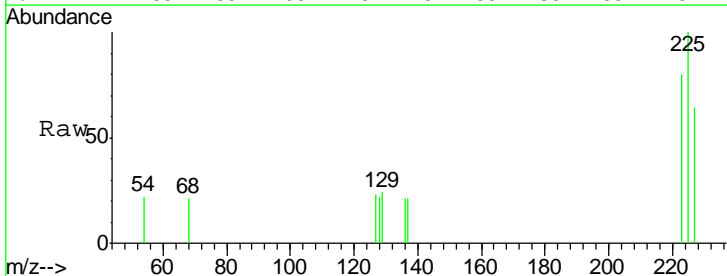
Instrument :  
 BNA\_G  
 ClientSampleId :  
 SSTDCCC0.4EC

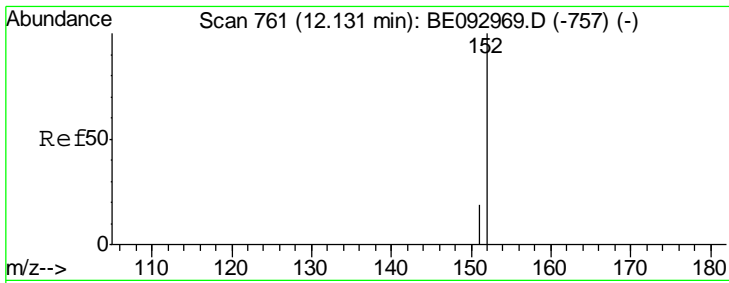
Tgt Ion	Resp	Lower	Upper
128	3219		
129	14.3	11.4	17.0
127	14.0	11.2	16.8



#10  
 Hexachlorobutadiene  
 Concen: 0.36 ng  
 RT: 10.87 min Scan# 696  
 Delta R.T. -0.02 min  
 Lab File: BE092987.D  
 Acq: 10 May 2017 18:16

Tgt Ion	Resp	Lower	Upper
225	430		
223	64.4	49.7	74.5
227	65.3	50.3	75.5



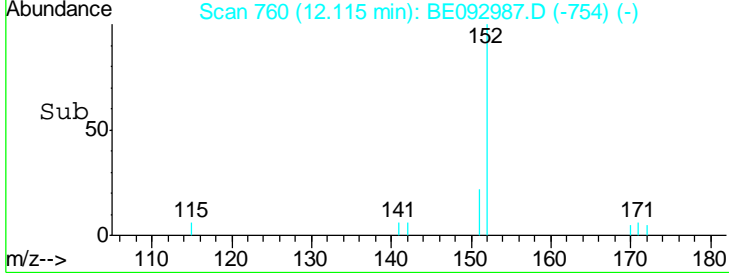
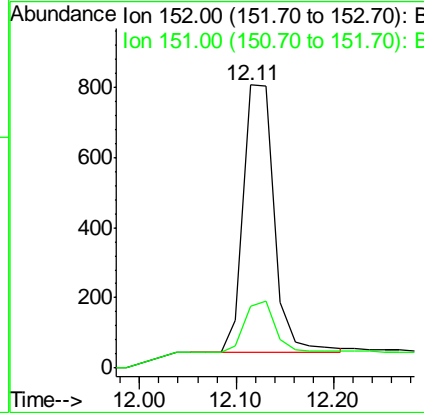
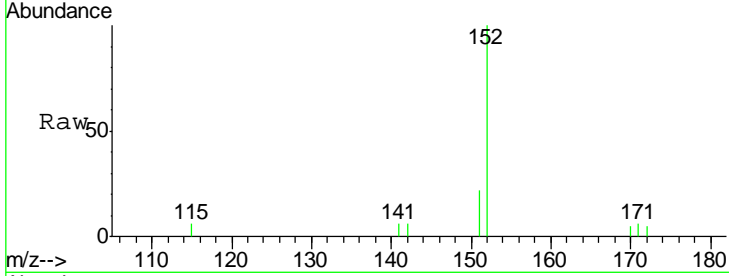


#11  
 2-Methylnaphthalene-d10  
 Concen: 0.38 ng  
 RT: 12.11 min Scan# 760  
 Delta R.T. -0.02 min  
 Lab File: BE092987.D  
 Acq: 10 May 2017 18:16

**Instrument :**  
 BNA\_G  
**ClientSampleId :**  
 SSTDCCC0.4EC

Tgt Ion:152 Resp: 1688

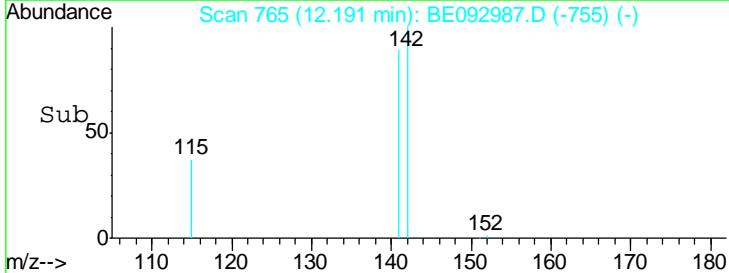
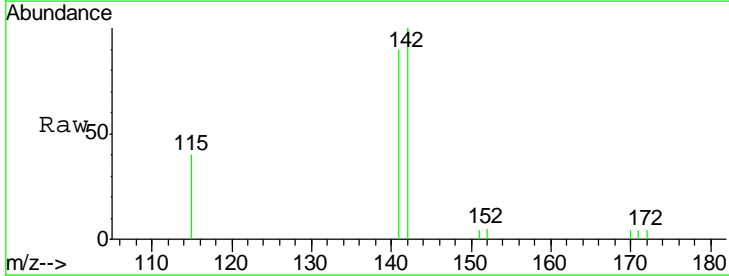
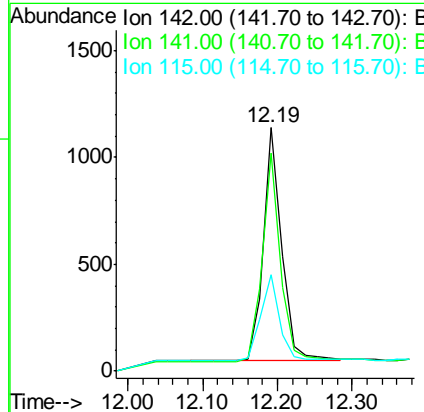
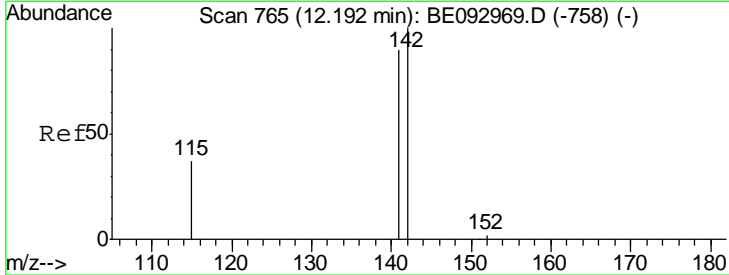
Ion	Ratio	Lower	Upper
152	100		
151	19.0	15.1	22.7



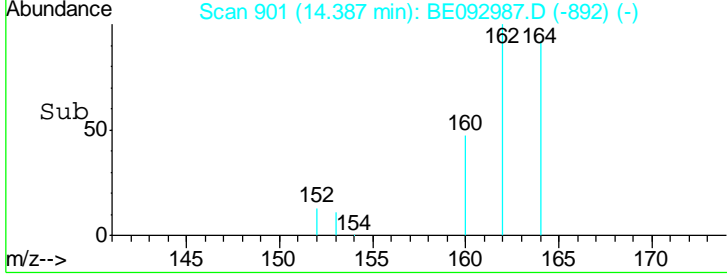
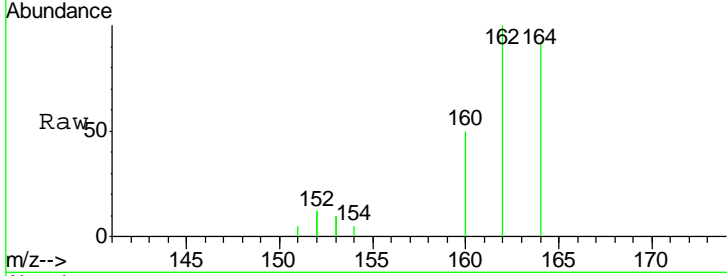
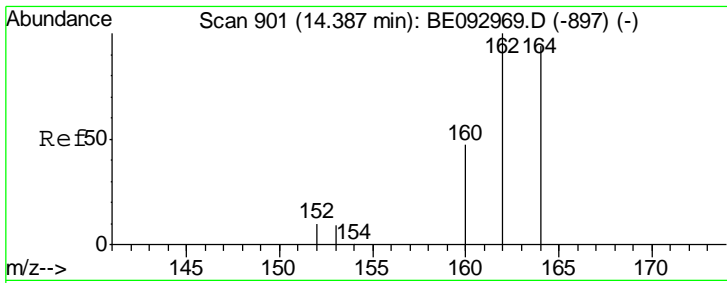
#12  
 2-Methylnaphthalene  
 Concen: 0.39 ng  
 RT: 12.19 min Scan# 765  
 Delta R.T. -0.00 min  
 Lab File: BE092987.D  
 Acq: 10 May 2017 18:16

Tgt Ion:142 Resp: 1870

Ion	Ratio	Lower	Upper
142	100		
141	89.6	72.6	108.8
115	39.6	32.2	48.2



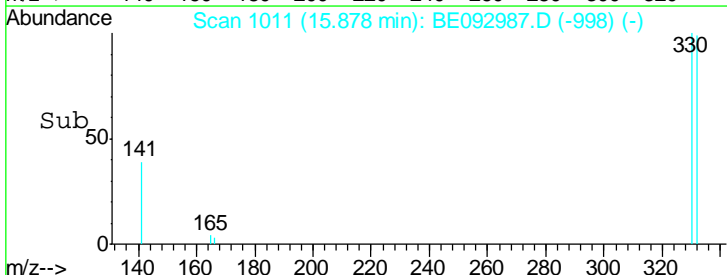
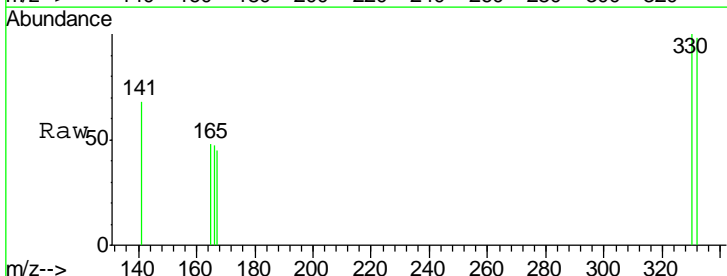
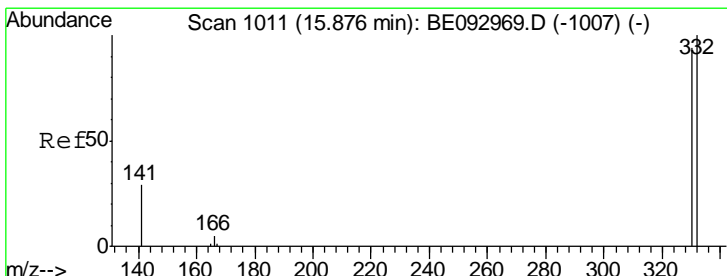
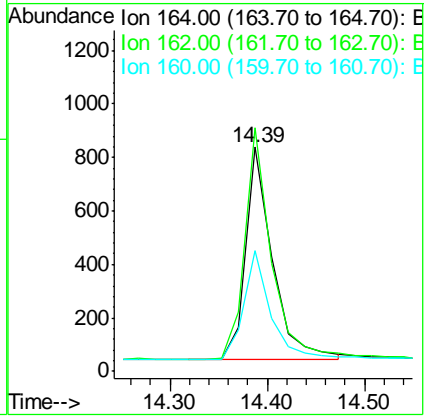




#13  
 Acenaphthene-d10  
 Concen: 0.40 ng  
 RT: 14.39 min Scan# 901  
 Delta R.T. 0.00 min  
 Lab File: BE092987.D  
 Acq: 10 May 2017 18:16

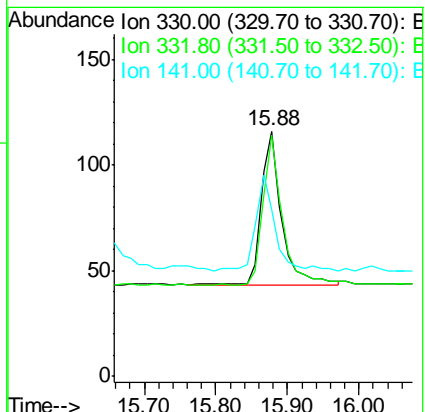
Instrument :  
 BNA\_G  
 ClientSampleId :  
 SSTDCCC0.4EC

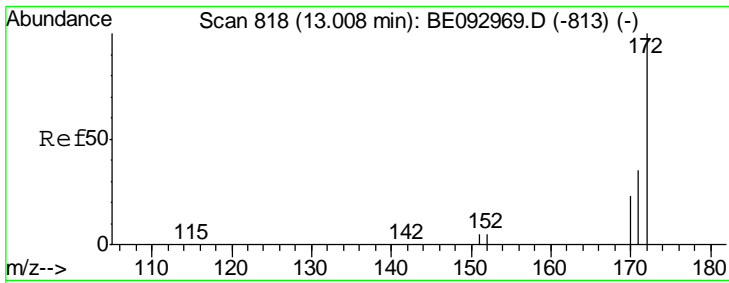
Tgt Ion	Resp	Lower	Upper
164	100		
162	108.6	84.6	127.0
160	53.9	41.8	62.6



#14  
 2,4,6-Tribromophenol  
 Concen: 0.38 ng  
 RT: 15.88 min Scan# 1011  
 Delta R.T. 0.00 min  
 Lab File: BE092987.D  
 Acq: 10 May 2017 18:16

Tgt Ion	Resp	Lower	Upper
330	100		
332	92.1	77.7	116.5
141	56.3	56.2	84.4

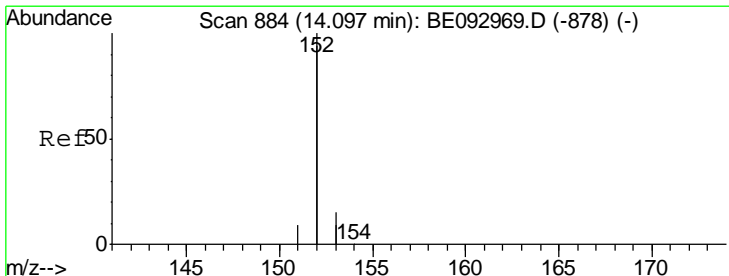
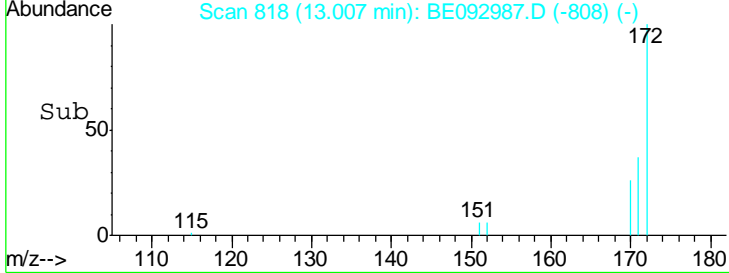
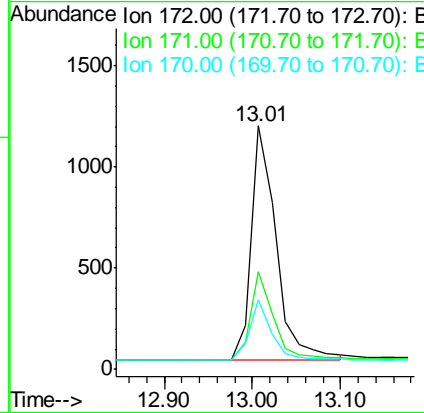
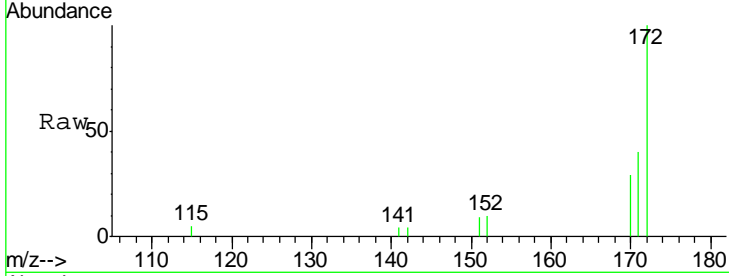




#15  
 2-Fluorobiphenyl  
 Concen: 0.41 ng  
 RT: 13.01 min Scan# 818  
 Delta R.T. -0.00 min  
 Lab File: BE092987.D  
 Acq: 10 May 2017 18:16

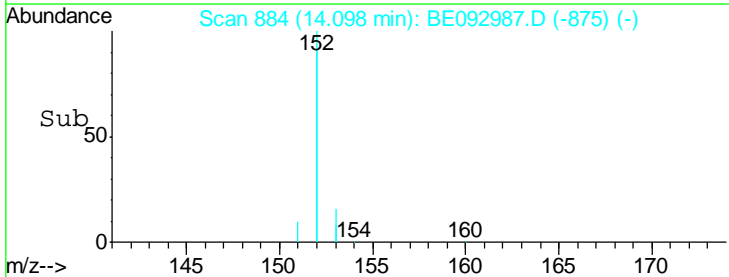
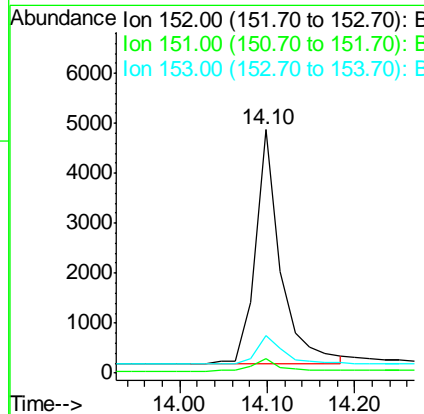
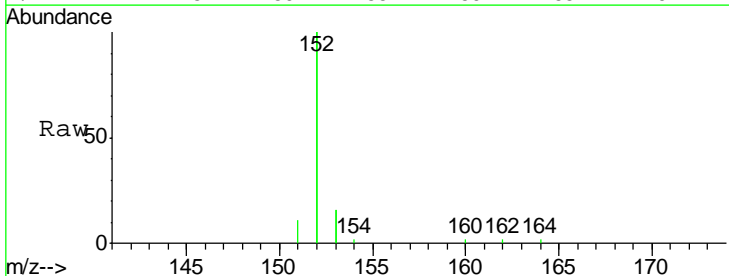
Instrument :  
 BNA\_G  
 ClientSampled :  
 SSTDCCC0.4EC

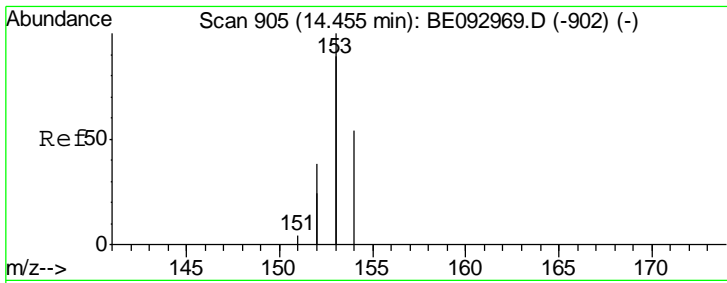
Tgt Ion	Resp	Lower	Upper
172	100		
171	39.9	29.8	44.6
170	28.5	20.7	31.1



#16  
 Acenaphthylene  
 Concen: 0.37 ng  
 RT: 14.10 min Scan# 884  
 Delta R.T. 0.00 min  
 Lab File: BE092987.D  
 Acq: 10 May 2017 18:16

Tgt Ion	Resp	Lower	Upper
152	100		
151	5.0	4.0	6.0
153	12.8	10.3	15.5

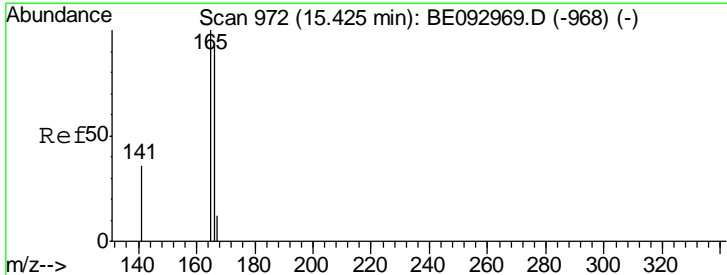
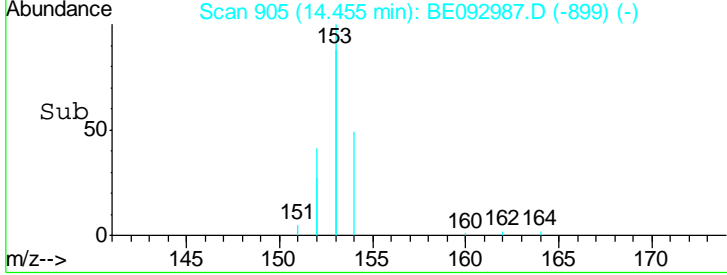
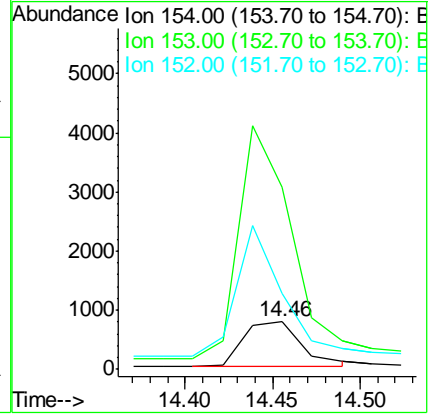
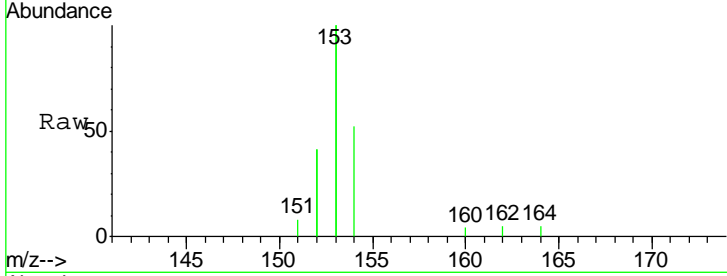




#17  
 Acenaphthene  
 Concen: 0.38 ng  
 RT: 14.46 min Scan# 905  
 Delta R.T. 0.00 min  
 Lab File: BE092987.D  
 Acq: 10 May 2017 18:16

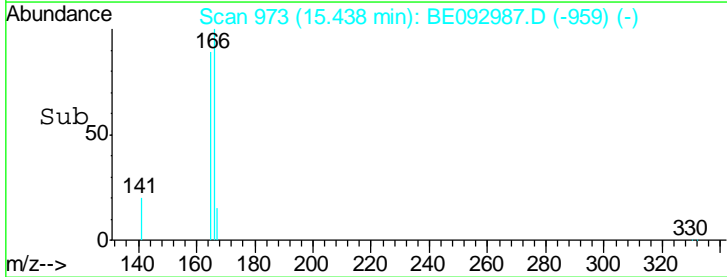
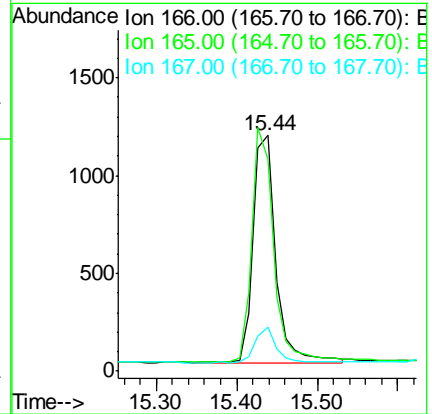
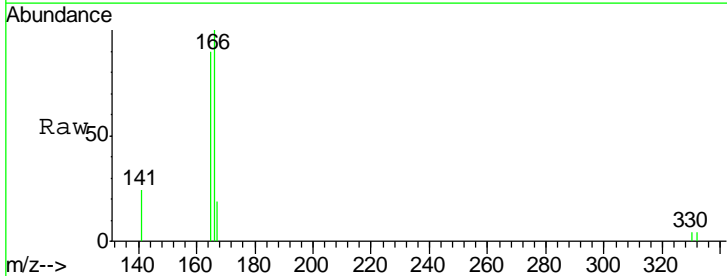
Instrument :  
 BNA\_G  
 ClientSampleId :  
 SSTDCCC0.4EC

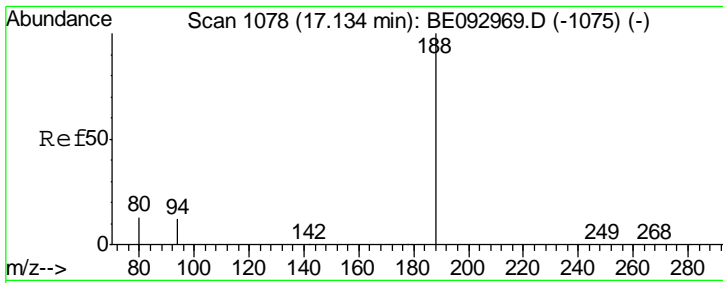
Tgt Ion	Resp	Lower	Upper
154	100		
153	460.0	367.8	551.6
152	228.3	188.2	282.2



#18  
 Fluorene  
 Concen: 0.39 ng  
 RT: 15.44 min Scan# 973  
 Delta R.T. 0.01 min  
 Lab File: BE092987.D  
 Acq: 10 May 2017 18:16

Tgt Ion	Resp	Lower	Upper
166	100		
165	99.5	78.6	117.8
167	14.2	11.1	16.7

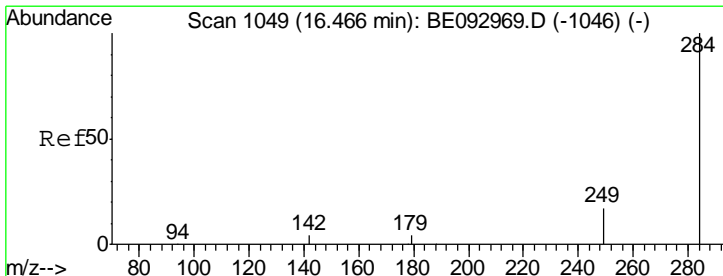
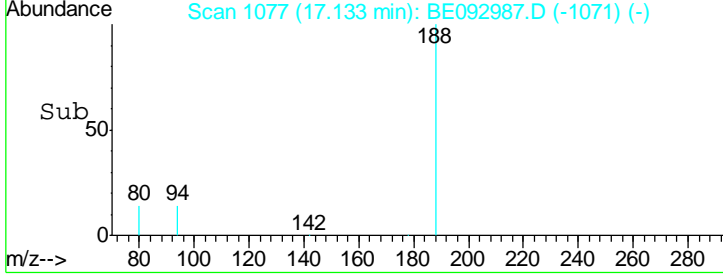
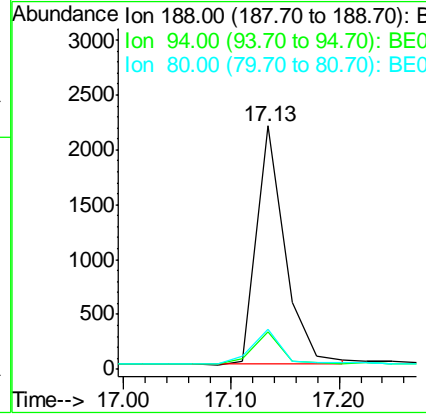
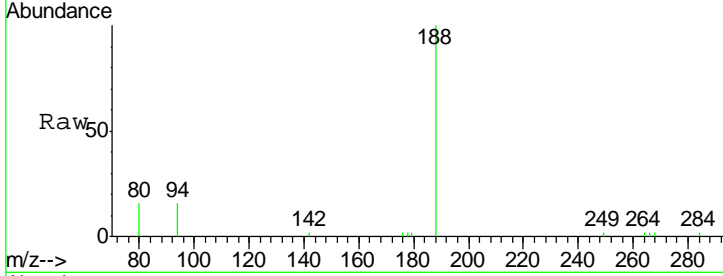




#19  
 Phenanthrene-d10  
 Concen: 0.40 ng  
 RT: 17.13 min Scan# 1077  
 Delta R.T. -0.00 min  
 Lab File: BE092987.D  
 Acq: 10 May 2017 18:16

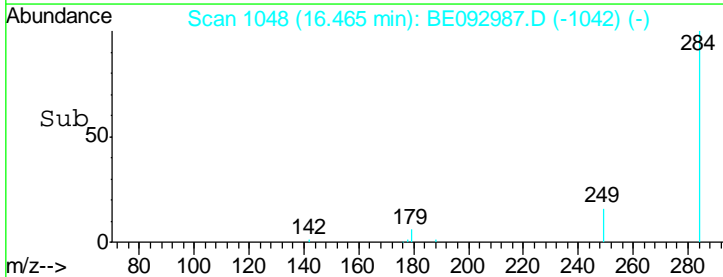
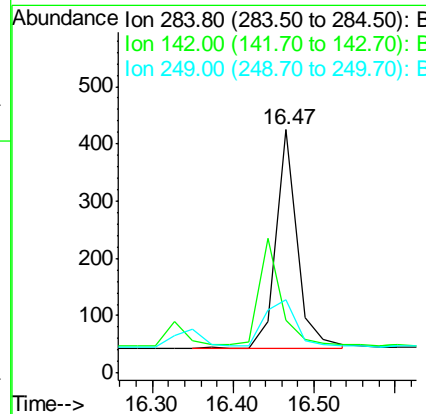
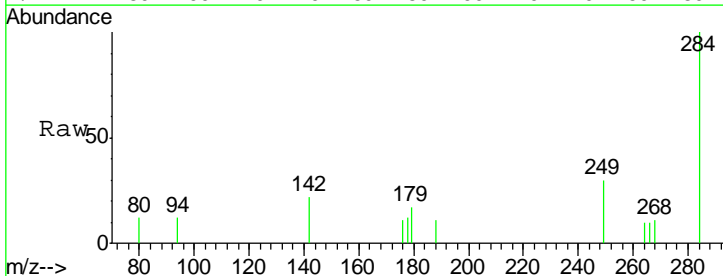
Instrument :  
 BNA\_G  
 ClientSampleId :  
 SSTDCCC0.4EC

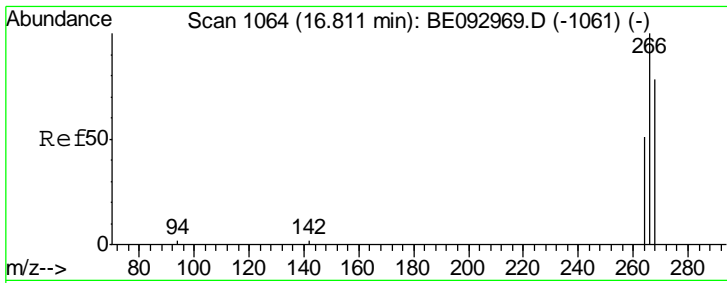
Tgt Ion	Resp	Ion Ratio	Lower	Upper
188	3989	100		
94		15.5	11.3	16.9
80		16.3	11.7	17.5



#20  
 Hexachlorobenzene  
 Concen: 0.37 ng  
 RT: 16.47 min Scan# 1048  
 Delta R.T. -0.00 min  
 Lab File: BE092987.D  
 Acq: 10 May 2017 18:16

Tgt Ion	Resp	Ion Ratio	Lower	Upper
284	693	100		
142		0.0	0.0	0.0
249		30.2	0.0	0.0#

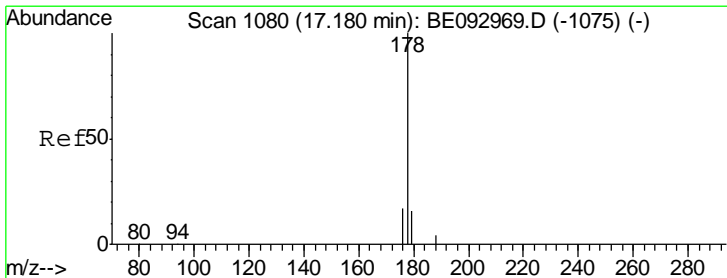
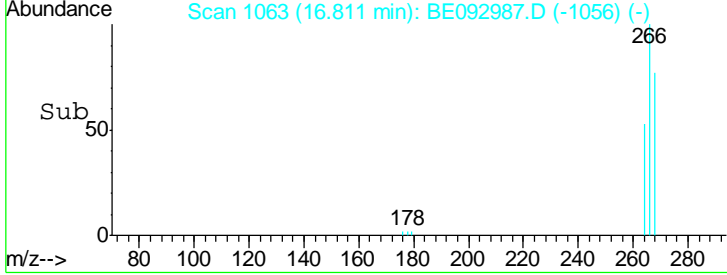
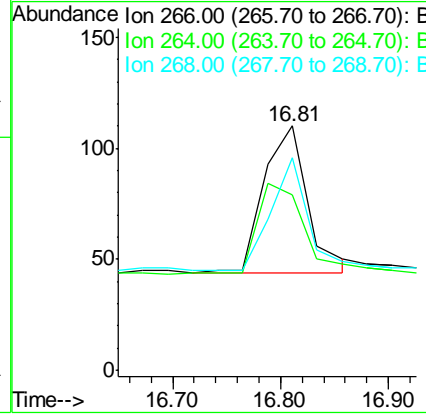
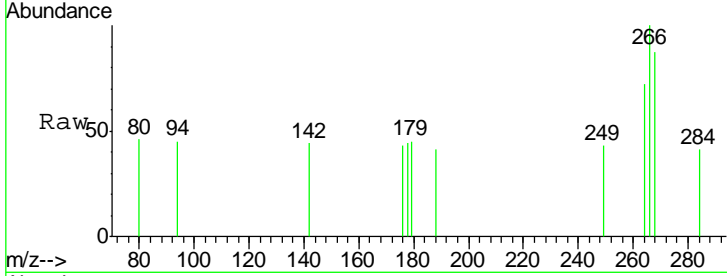




#21  
 Pentachlorophenol  
 Concen: 0.43 ng  
 RT: 16.81 min Scan# 1063  
 Delta R.T. -0.00 min  
 Lab File: BE092987.D  
 Acq: 10 May 2017 18:16

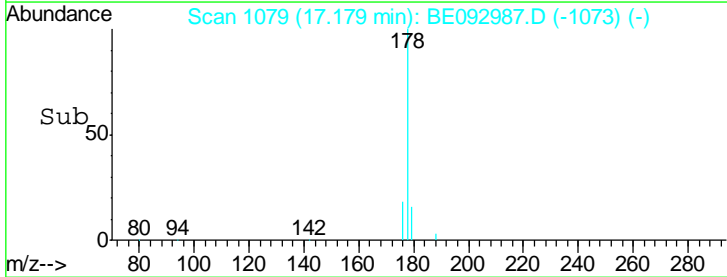
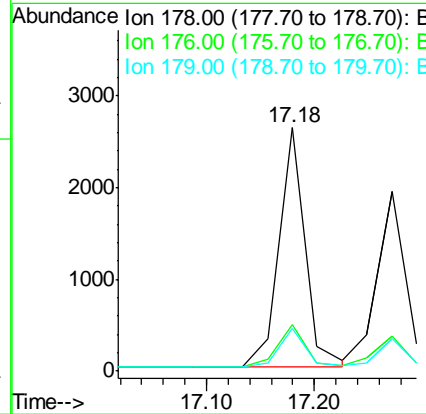
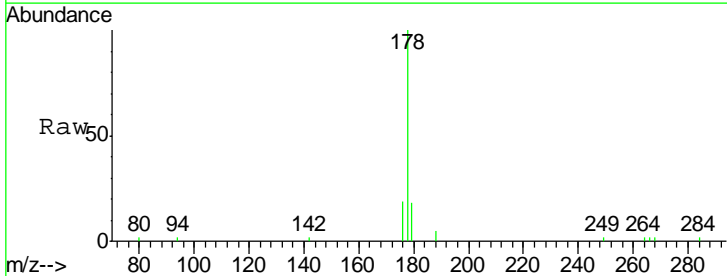
Instrument :  
 BNA\_G  
 ClientSampleId :  
 SSTDCCC0.4EC

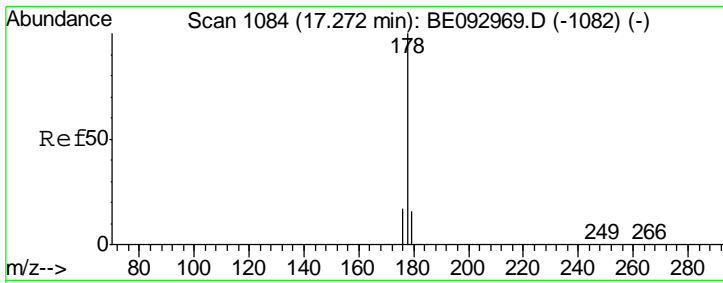
Tgt Ion	Resp	Lower	Upper
266	100		
264	71.8	58.2	87.2
268	87.3	71.9	107.9



#22  
 Phenanthrene  
 Concen: 0.39 ng  
 RT: 17.18 min Scan# 1079  
 Delta R.T. -0.00 min  
 Lab File: BE092987.D  
 Acq: 10 May 2017 18:16

Tgt Ion	Resp	Lower	Upper
178	100		
176	18.7	15.0	22.4
179	15.9	12.7	19.1



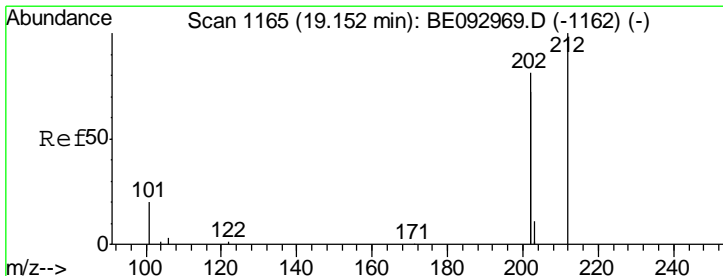
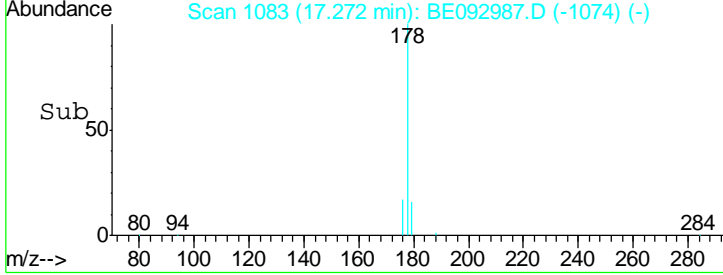
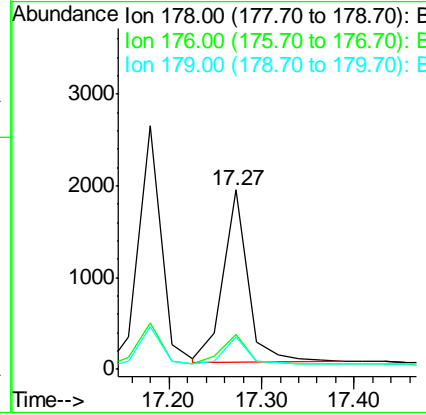
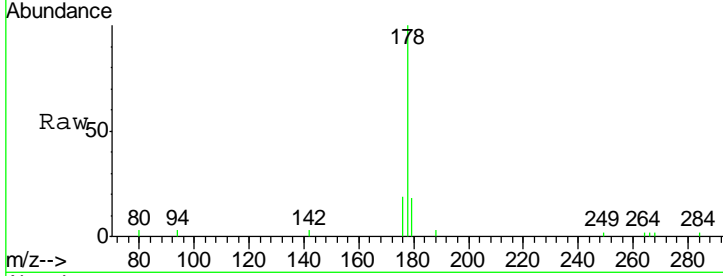


#23  
 Anthracene  
 Concen: 0.39 ng  
 RT: 17.27 min Scan# 1083  
 Delta R.T. -0.00 min  
 Lab File: BE092987.D  
 Acq: 10 May 2017 18:16

Instrument : BNA\_G  
 ClientSampleId : SSTDCCC0.4EC

Tgt Ion: 178 Resp: 3525

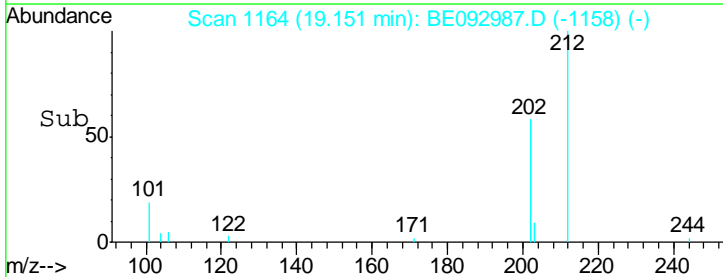
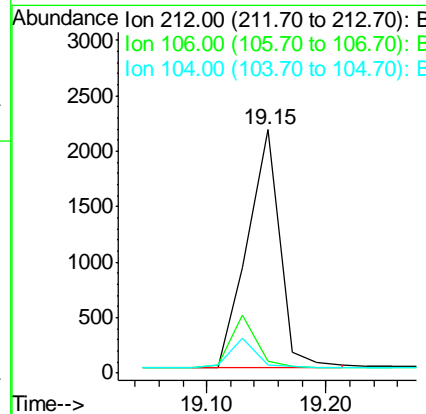
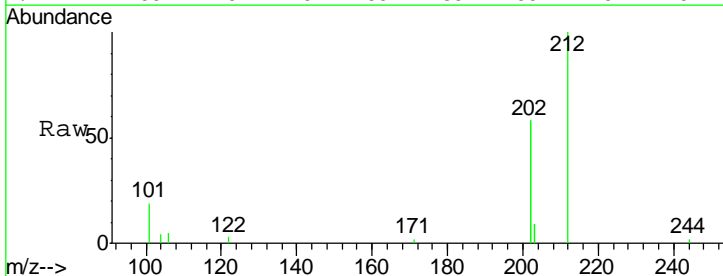
Ion	Ratio	Lower	Upper
178	100		
176	18.5	14.6	22.0
179	15.1	12.0	18.0

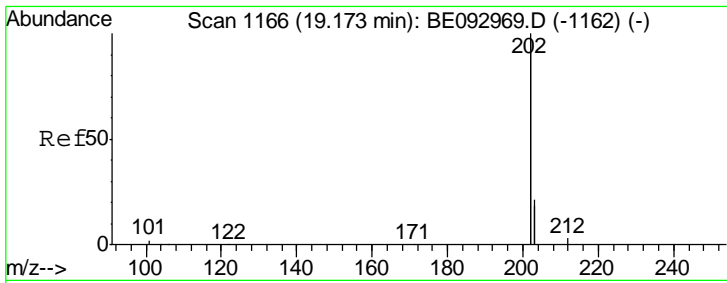


#24  
 Fluoranthene-d10  
 Concen: 0.40 ng  
 RT: 19.15 min Scan# 1164  
 Delta R.T. -0.00 min  
 Lab File: BE092987.D  
 Acq: 10 May 2017 18:16

Tgt Ion: 212 Resp: 4112

Ion	Ratio	Lower	Upper
212	100		
106	0.0	0.0	0.0
104	0.0	0.0	0.0

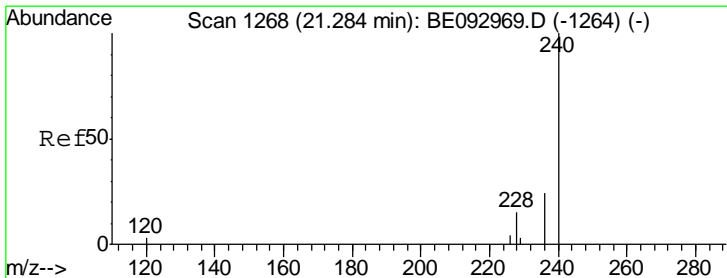
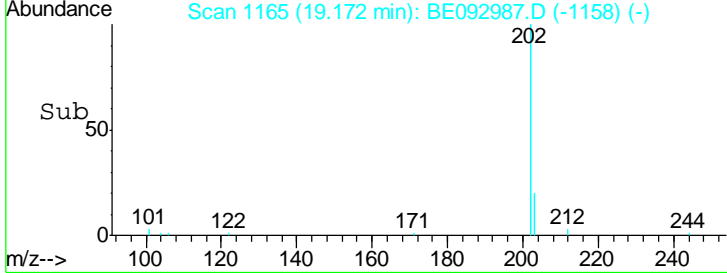
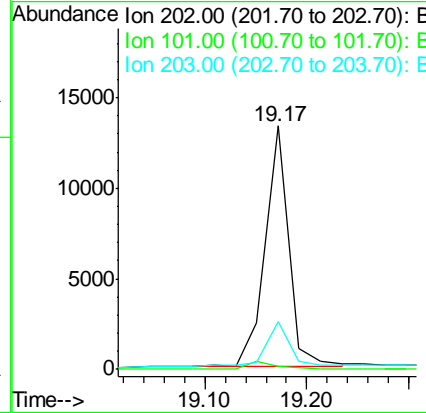
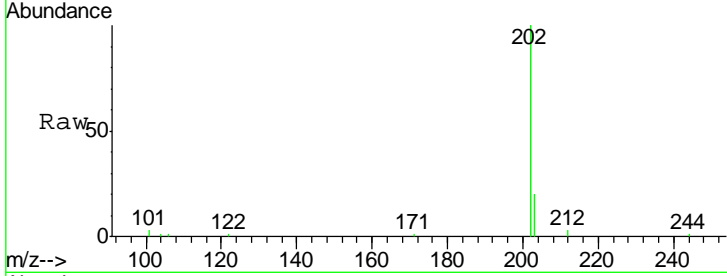




#25  
 Fluoranthene  
 Concen: 0.40 ng  
 RT: 19.17 min Scan# 1165  
 Delta R.T. -0.00 min  
 Lab File: BE092987.D  
 Acq: 10 May 2017 18:16

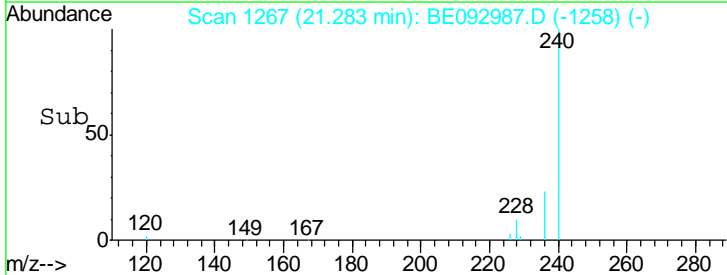
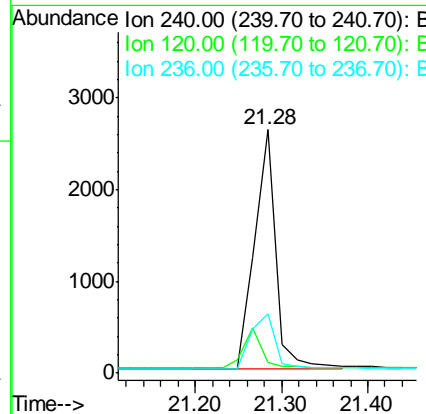
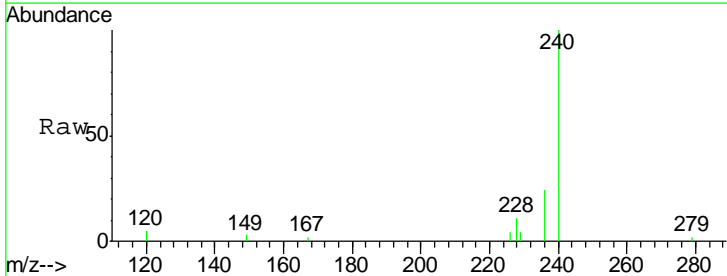
Instrument :  
 BNA\_G  
 ClientSampleId :  
 SSTDCCC0.4EC

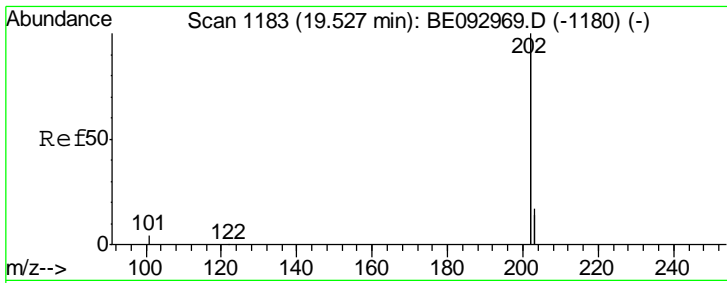
Tgt Ion	Resp	Lower	Upper
202	100		
101	0.0	0.0	0.0
203	17.6	14.4	21.6



#26  
 Chrysene-d12  
 Concen: 0.40 ng  
 RT: 21.28 min Scan# 1267  
 Delta R.T. -0.00 min  
 Lab File: BE092987.D  
 Acq: 10 May 2017 18:16

Tgt Ion	Resp	Lower	Upper
240	100		
120	4.6	4.6	7.0#
236	24.2	20.8	31.2

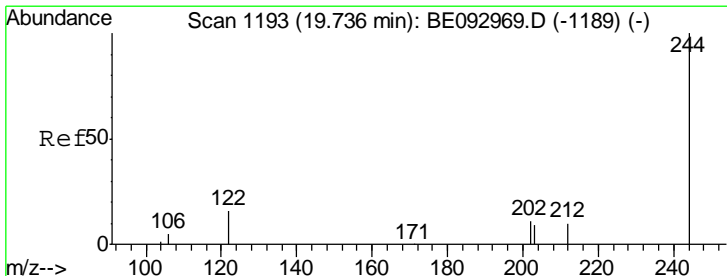
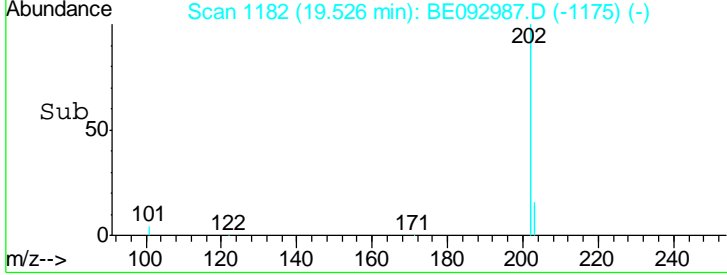
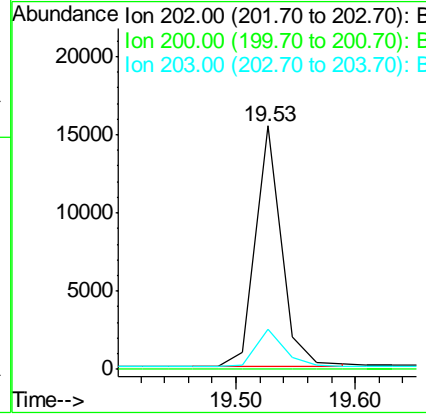
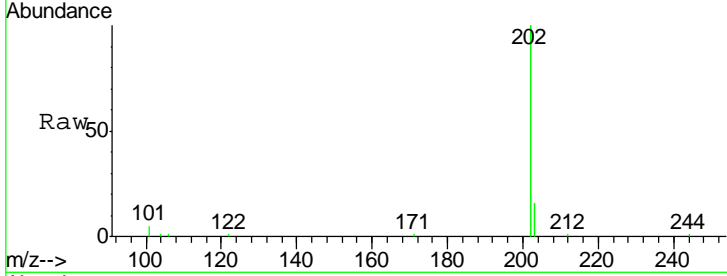




#27  
 Pyrene  
 Concen: 0.38 ng  
 RT: 19.53 min Scan# 1182  
 Delta R.T. -0.00 min  
 Lab File: BE092987.D  
 Acq: 10 May 2017 18:16

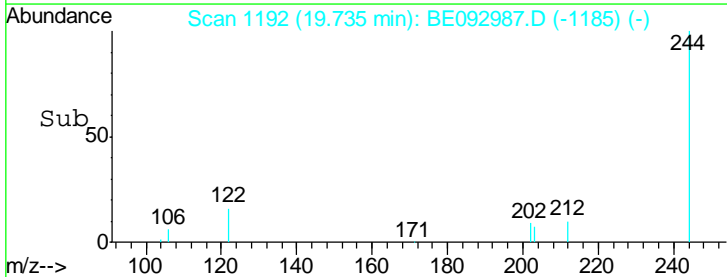
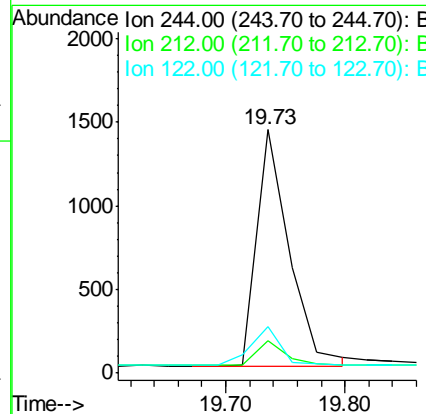
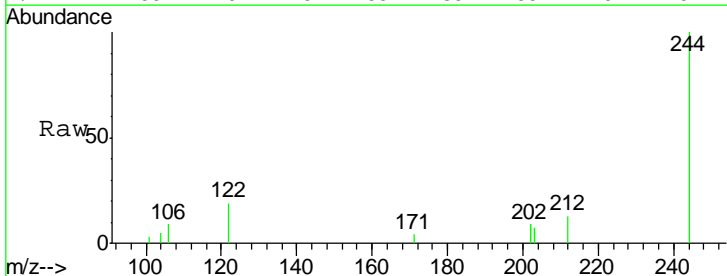
Instrument : BNA\_G  
 ClientSampleId : SSTDCCC0.4EC

Tgt Ion	Resp	Lower	Upper
202	100		
200	0.0	0.0	0.0
203	16.6	13.7	20.5

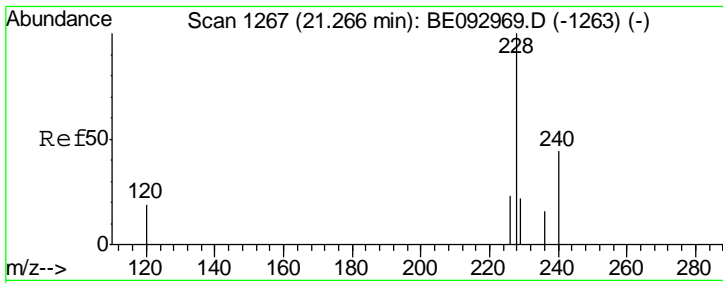


#28  
 Terphenyl-d14  
 Concen: 0.39 ng  
 RT: 19.73 min Scan# 1192  
 Delta R.T. -0.00 min  
 Lab File: BE092987.D  
 Acq: 10 May 2017 18:16

Tgt Ion	Resp	Lower	Upper
244	100		
212	13.1	10.6	16.0
122	19.2	15.4	23.0





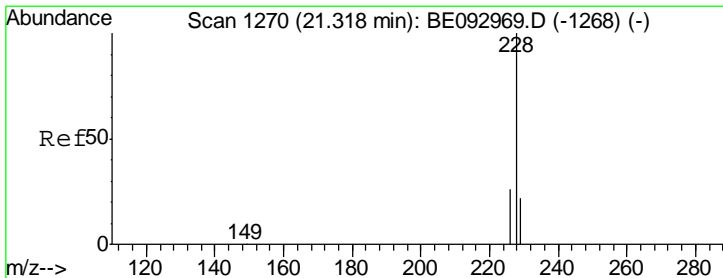
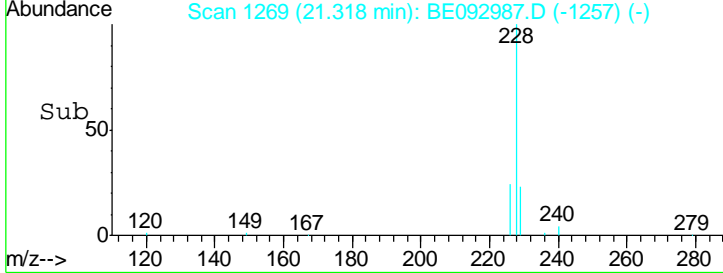
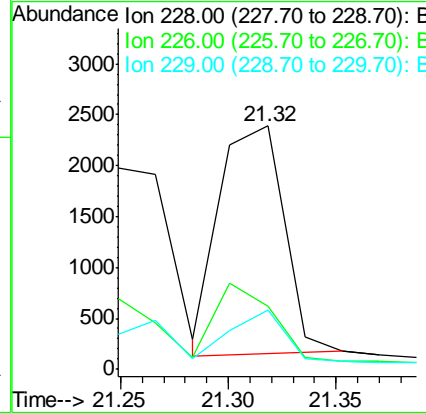
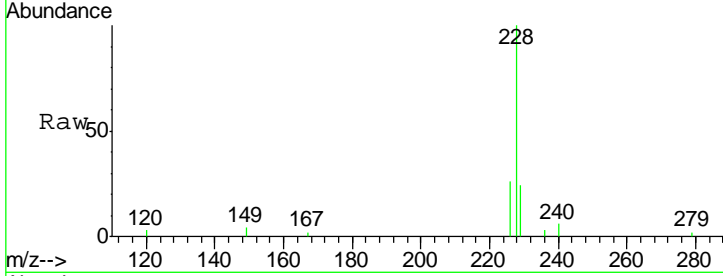


#29  
 Benzo(a)anthracene  
 Concen: 0.43 ng  
 RT: 21.32 min Scan# 1269  
 Delta R.T. 0.05 min  
 Lab File: BE092987.D  
 Acq: 10 May 2017 18:16

Instrument :  
 BNA\_G  
 ClientSampled :  
 SSTDCCC0.4EC

Tgt Ion: 228 Resp: 4648

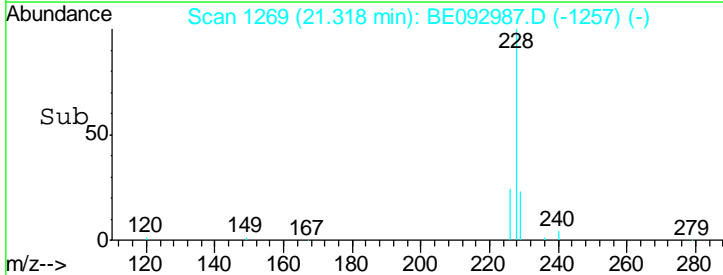
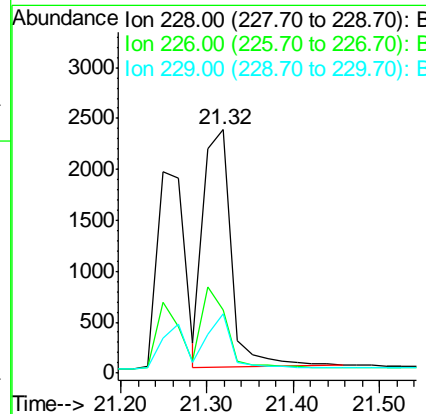
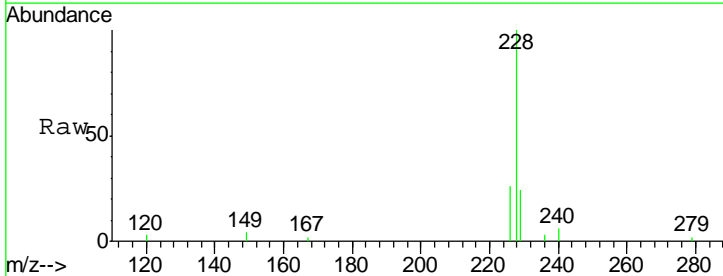
Ion	Ratio	Lower	Upper
228	100		
226	25.8	19.7	29.5
229	24.2	19.2	28.8

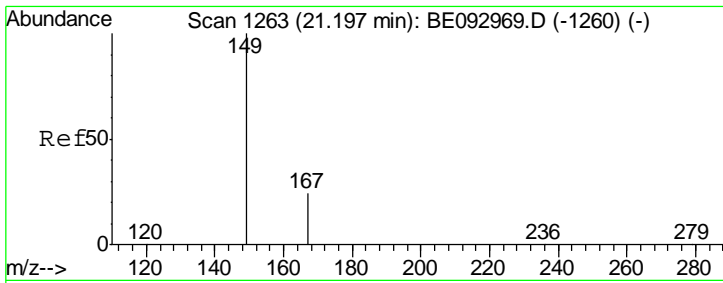


#30  
 Chrysene  
 Concen: 0.36 ng  
 RT: 21.32 min Scan# 1269  
 Delta R.T. -0.00 min  
 Lab File: BE092987.D  
 Acq: 10 May 2017 18:16

Tgt Ion: 228 Resp: 5179

Ion	Ratio	Lower	Upper
228	100		
226	25.8	21.5	32.3
229	24.2	18.6	28.0

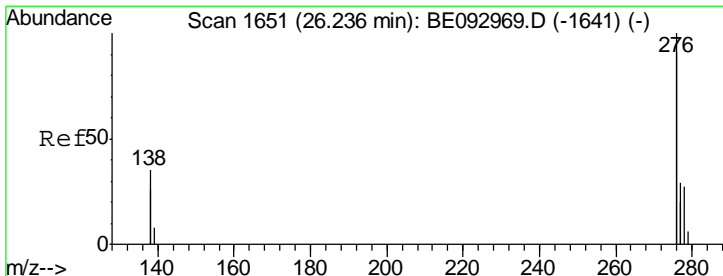
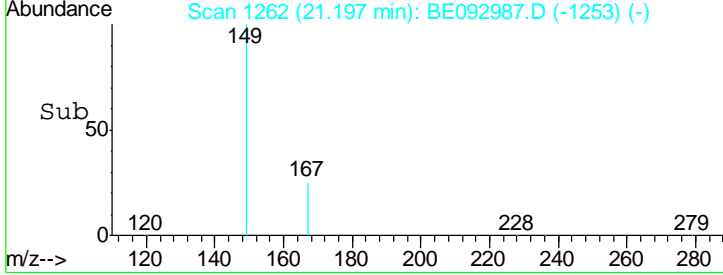
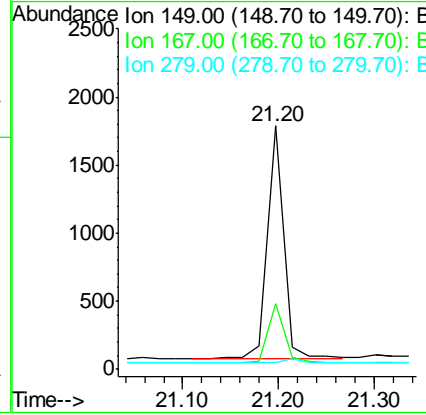
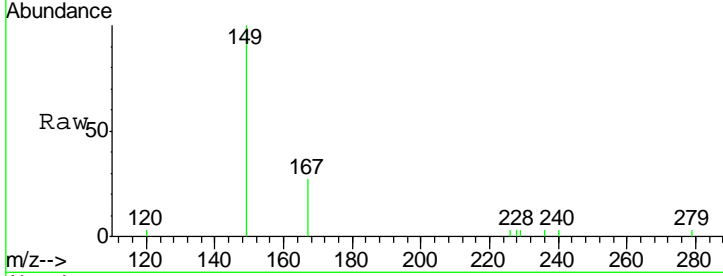




#31  
 Bis(2-ethylhexyl)phthalate  
 Concen: 0.49 ng  
 RT: 21.20 min Scan# 1262  
 Delta R.T. -0.00 min  
 Lab File: BE092987.D  
 Acq: 10 May 2017 18:16

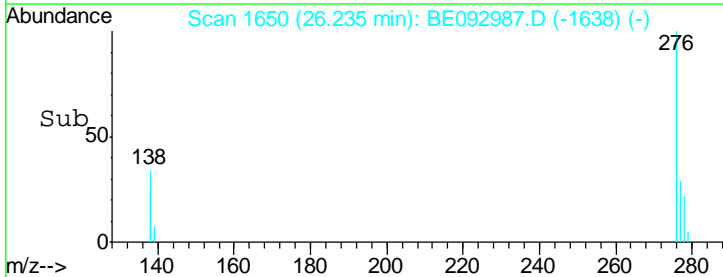
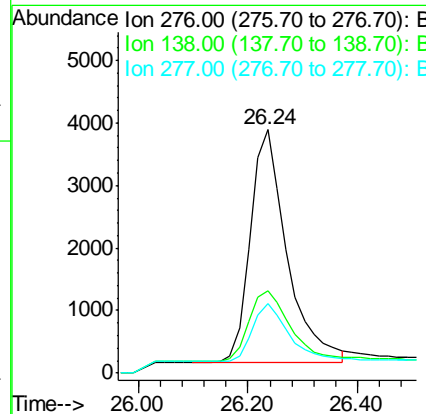
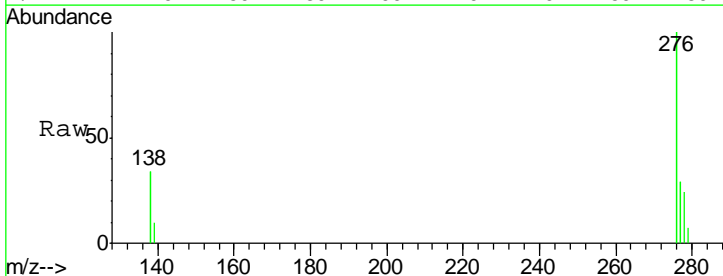
Instrument :  
 BNA\_G  
 ClientSampleId :  
 SSTDCCC0.4EC

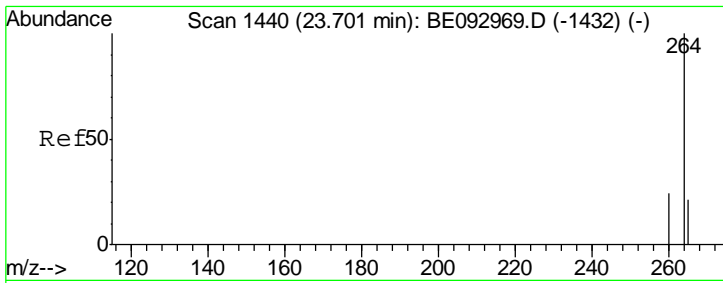
Tgt Ion	Resp	Lower	Upper
149	100		
167	25.7	20.1	30.1
279	2.6	2.2	3.4



#32  
 Indeno(1,2,3-cd)pyrene  
 Concen: 0.35 ng  
 RT: 26.24 min Scan# 1650  
 Delta R.T. -0.00 min  
 Lab File: BE092987.D  
 Acq: 10 May 2017 18:16

Tgt Ion	Resp	Lower	Upper
276	100		
138	34.1	27.4	41.2
277	25.1	20.1	30.1



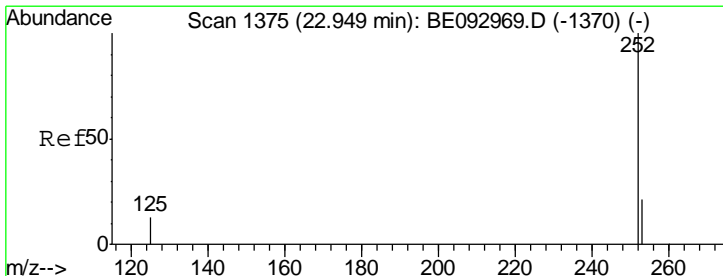
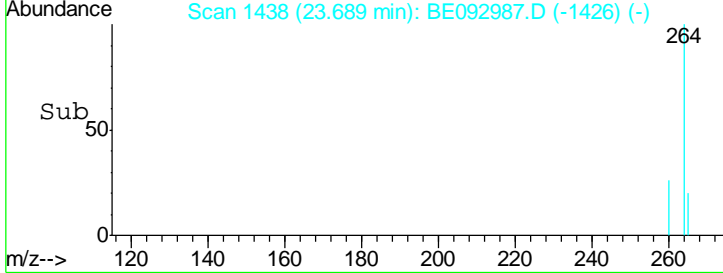
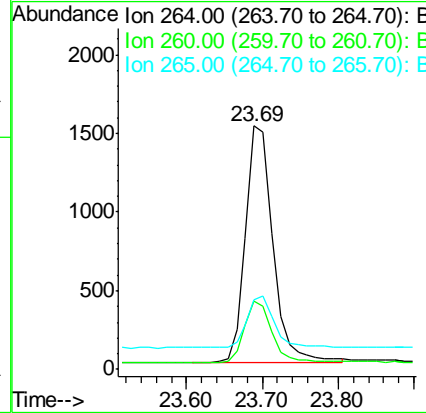
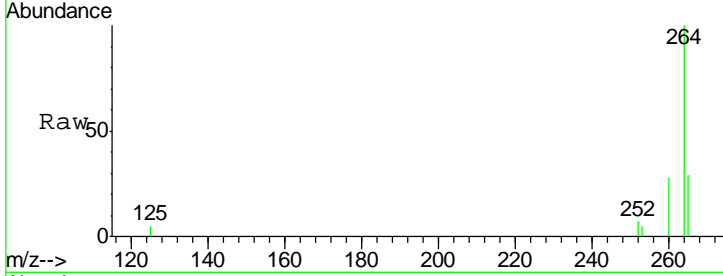


#33  
 Perylene-d12  
 Concen: 0.40 ng  
 RT: 23.69 min Scan# 1438  
 Delta R.T. -0.01 min  
 Lab File: BE092987.D  
 Acq: 10 May 2017 18:16

Instrument :  
 BNA\_G  
 ClientSampleId :  
 SSTDCCC0.4EC

Tgt Ion: 264 Resp: 3762

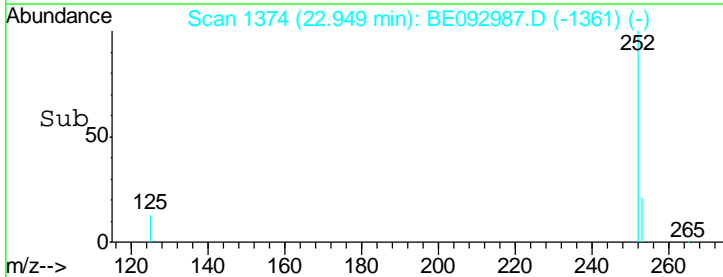
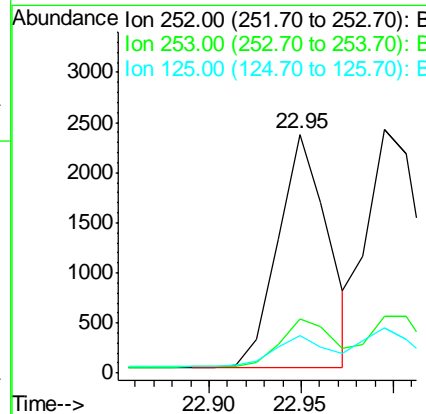
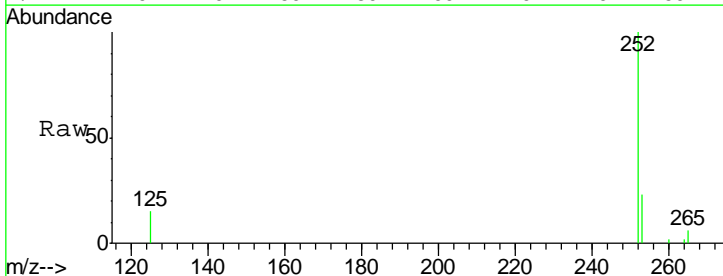
Ion	Ratio	Lower	Upper
264	100		
260	28.2	21.0	31.4
265	28.7	24.6	36.8

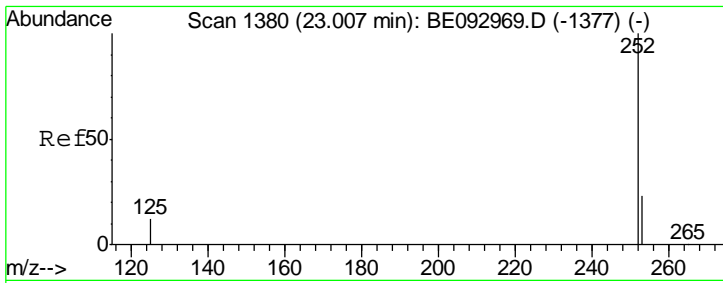


#34  
 Benzo(b)fluoranthene  
 Concen: 0.38 ng  
 RT: 22.95 min Scan# 1374  
 Delta R.T. -0.00 min  
 Lab File: BE092987.D  
 Acq: 10 May 2017 18:16

Tgt Ion: 252 Resp: 4383

Ion	Ratio	Lower	Upper
252	100		
253	22.9	18.5	27.7
125	15.5	13.4	20.0

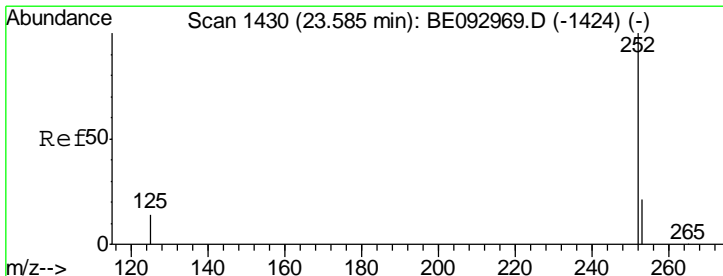
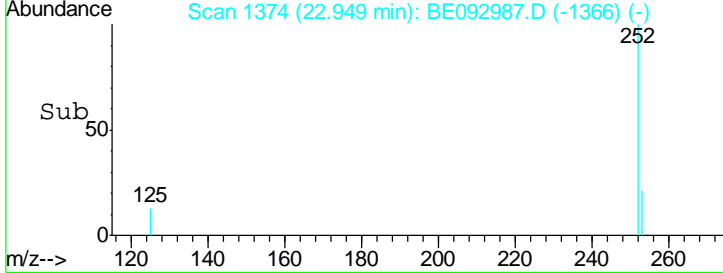
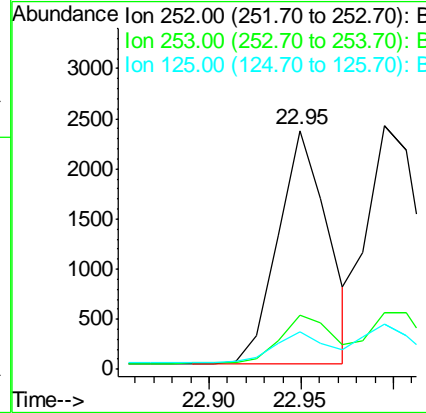
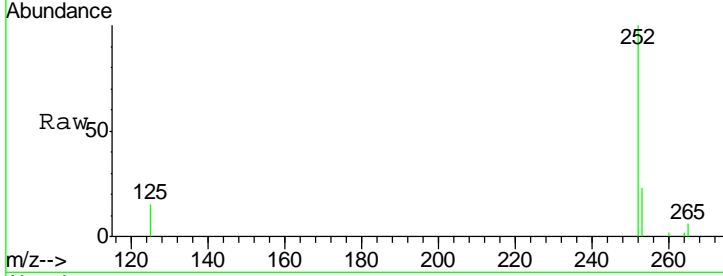




#35  
 Benzo(k)fluoranthene  
 Concen: 0.35 ng  
 RT: 22.95 min Scan# 1374  
 Delta R.T. -0.06 min  
 Lab File: BE092987.D  
 Acq: 10 May 2017 18:16

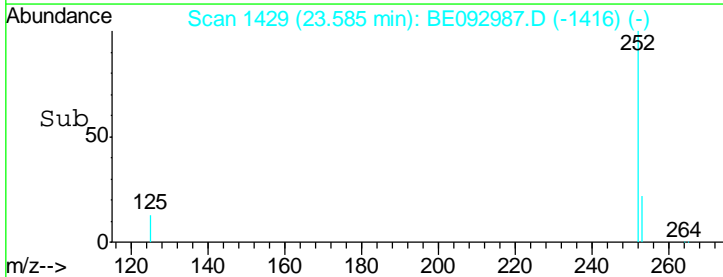
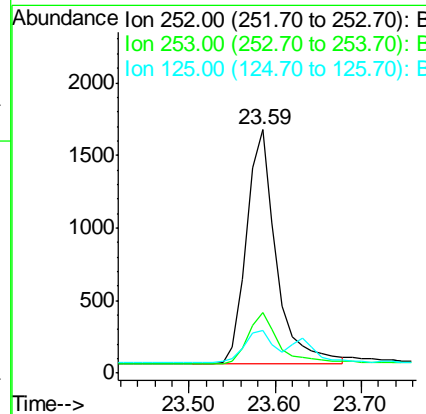
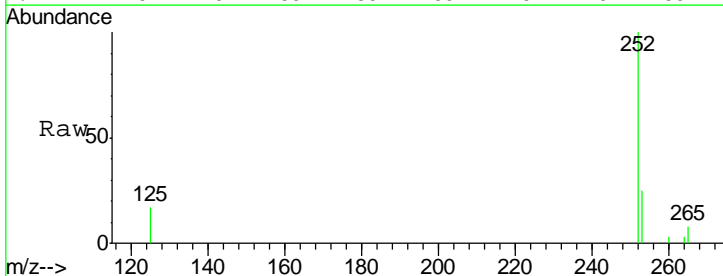
Instrument :  
 BNA\_G  
 ClientSampleId :  
 SSTDCCC0.4EC

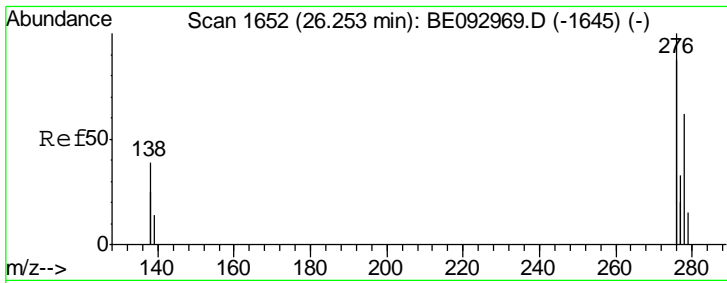
Tgt Ion	Resp	Lower	Upper
252	4383		
253	22.9	20.3	30.5
125	15.5	12.2	18.4



#36  
 Benzo(a)pyrene  
 Concen: 0.36 ng  
 RT: 23.59 min Scan# 1429  
 Delta R.T. -0.00 min  
 Lab File: BE092987.D  
 Acq: 10 May 2017 18:16

Tgt Ion	Resp	Lower	Upper
252	3910		
253	24.7	19.9	29.9
125	17.4	14.6	21.8

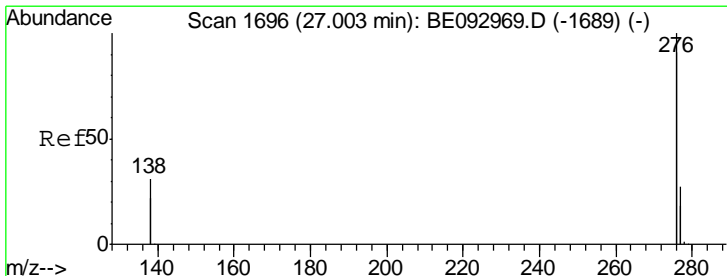
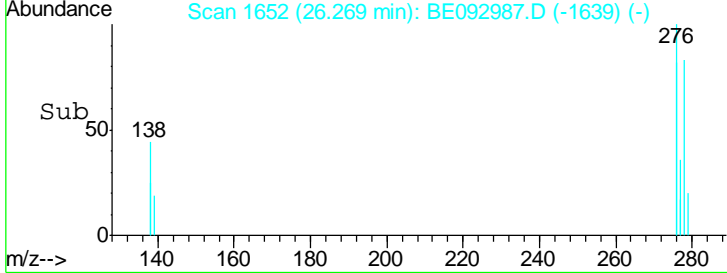
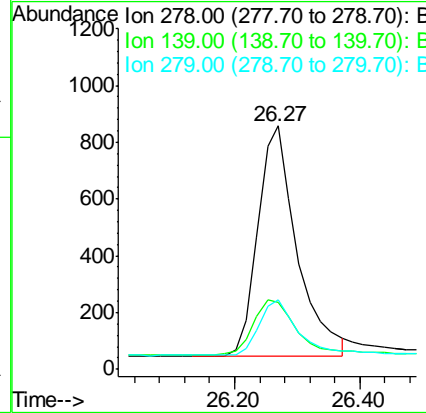
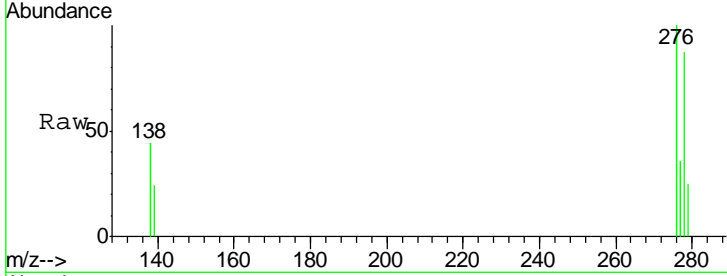




#37  
 Dibenzo(a,h)anthracene  
 Concen: 0.33 ng  
 RT: 26.27 min Scan# 1652  
 Delta R.T. 0.02 min  
 Lab File: BE092987.D  
 Acq: 10 May 2017 18:16

Instrument :  
 BNA\_G  
 ClientSampleId :  
 SSTDCCC0.4EC

Tgt Ion	Resp	Lower	Upper
278	3550		
278	100		
139	27.7	21.4	32.0
279	28.3	22.2	33.2



#38  
 Benzo(g,h,i)perylene  
 Concen: 0.35 ng  
 RT: 27.00 min Scan# 1695  
 Delta R.T. -0.00 min  
 Lab File: BE092987.D  
 Acq: 10 May 2017 18:16

Tgt Ion	Resp	Lower	Upper
276	16373		
276	100		
277	26.4	21.2	31.8
138	30.5	24.5	36.7

