

Data Path : Z:\HPCHEM1\BNA_G\DATA\BG051315\
 Data File : BG017127.D
 Acq On : 14 May 2015 3:18
 Operator : TP/IZ
 Sample : G2195-08
 Misc :
 ALS Vial : 25 Sample Multiplier: 1

Instrument :
 BNA_G
 ClientSampleId :
 TU012-TW-05

Integration Parameters: rteint.p
 Integrator: RTE
 Smoothing : ON Filtering: 5
 Sampling : 1 Min Area: 3 % of largest Peak
 Start Thrs: 0.2 Max Peaks: 100
 Stop Thrs : 0 Peak Location: TOP

If leading or trailing edge < 100 prefer < Baseline drop else tangent >
 Peak separation: 5

Method : Z:\HPCHEM1\BNA_G\METHODS\8270-BG051315.M
 Title : ASP BNA STANDARDS FOR 5 POINT CALIBRATION

Signal : TIC

peak #	R.T. min	first scan	max scan	last scan	PK TY	peak height	corr. area	corr. % max.	% of total
1	2.800	14	19	27	rBV	93092	172736	3.59%	0.870%
2	2.876	28	32	40	rVB	378307	485452	10.10%	2.444%
3	4.815	357	362	368	rVB	46833	67794	1.41%	0.341%
4	5.303	438	445	452	rBV	505446	716642	14.91%	3.608%
5	6.907	711	718	725	rBV	357525	543020	11.30%	2.734%
6	7.248	769	776	784	rBV	892329	1373126	28.57%	6.914%
7	7.706	848	854	861	rVB	209527	334420	6.96%	1.684%
8	8.029	898	909	916	rBV	710973	1126794	23.44%	5.673%
9	8.869	1043	1052	1062	rBV	689555	1129595	23.50%	5.687%
10	10.503	1322	1330	1337	rBV	295756	478946	9.97%	2.411%
11	12.982	1743	1752	1761	rBV	1843291	2644625	55.02%	13.315%
12	14.363	1979	1987	1993	rBV3	448706	659193	13.72%	3.319%
13	15.855	2234	2241	2252	rBV	1901981	2554907	53.16%	12.864%
14	17.107	2448	2454	2462	rBV	615150	863440	17.96%	4.347%
15	18.006	2601	2607	2616	rBV2	42101	69386	1.44%	0.349%
16	19.745	2897	2903	2908	rBV	3868345	4806249	100.00%	24.199%
17	21.296	3161	3167	3173	rBV	745233	950145	19.77%	4.784%
18	23.558	3545	3552	3562	rVB2	479006	884977	18.41%	4.456%

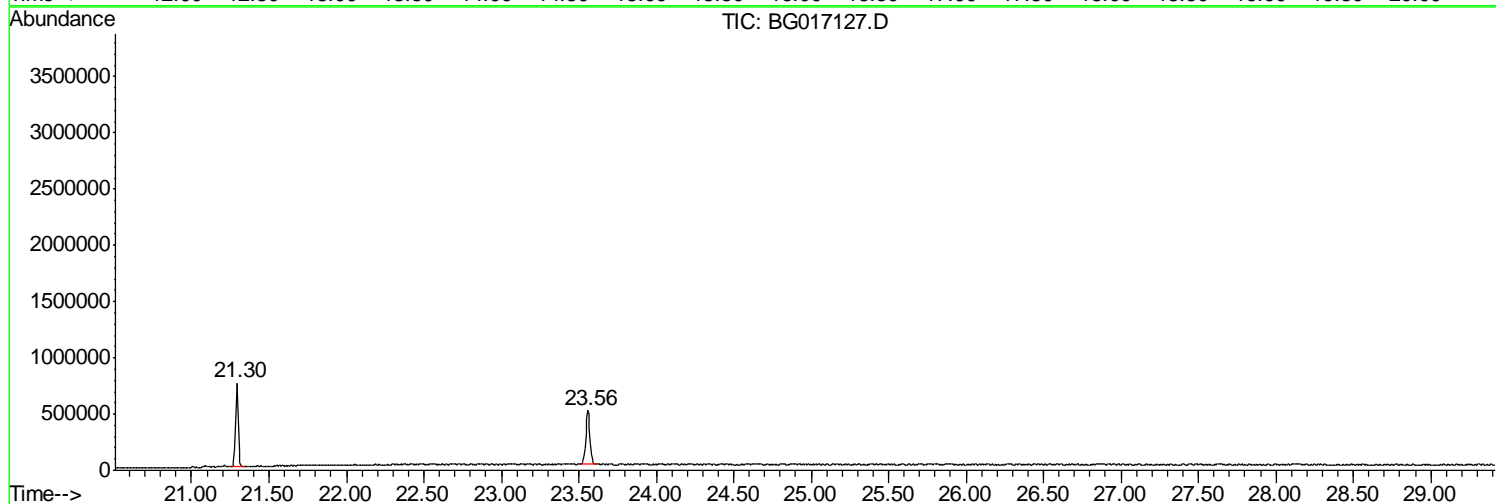
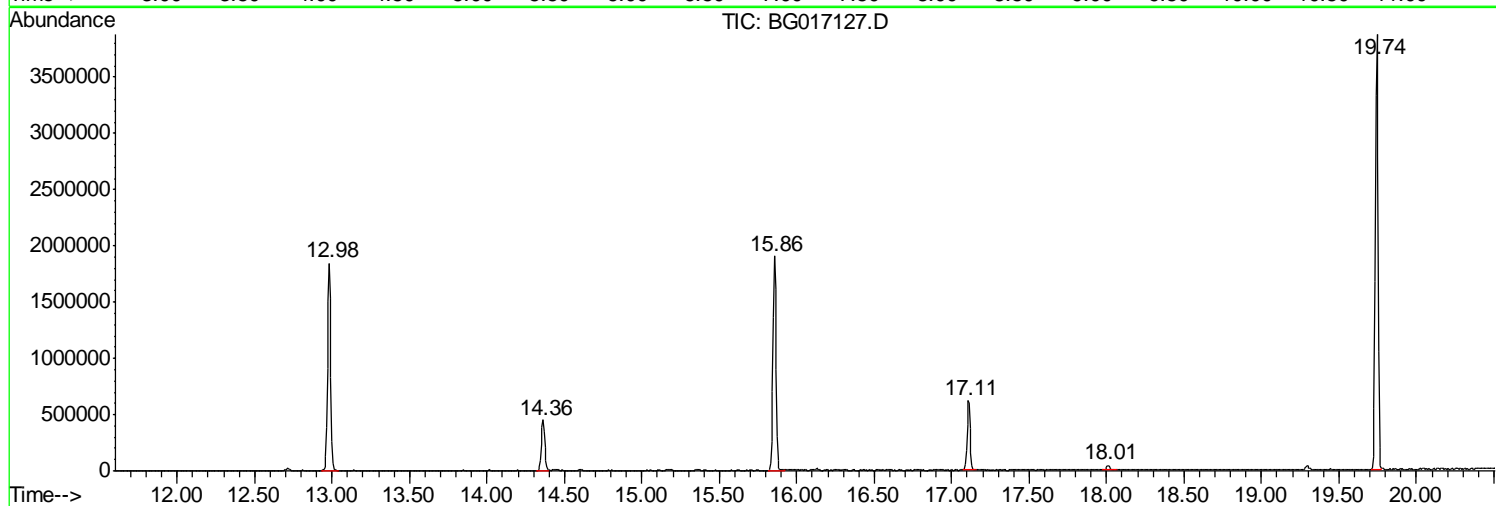
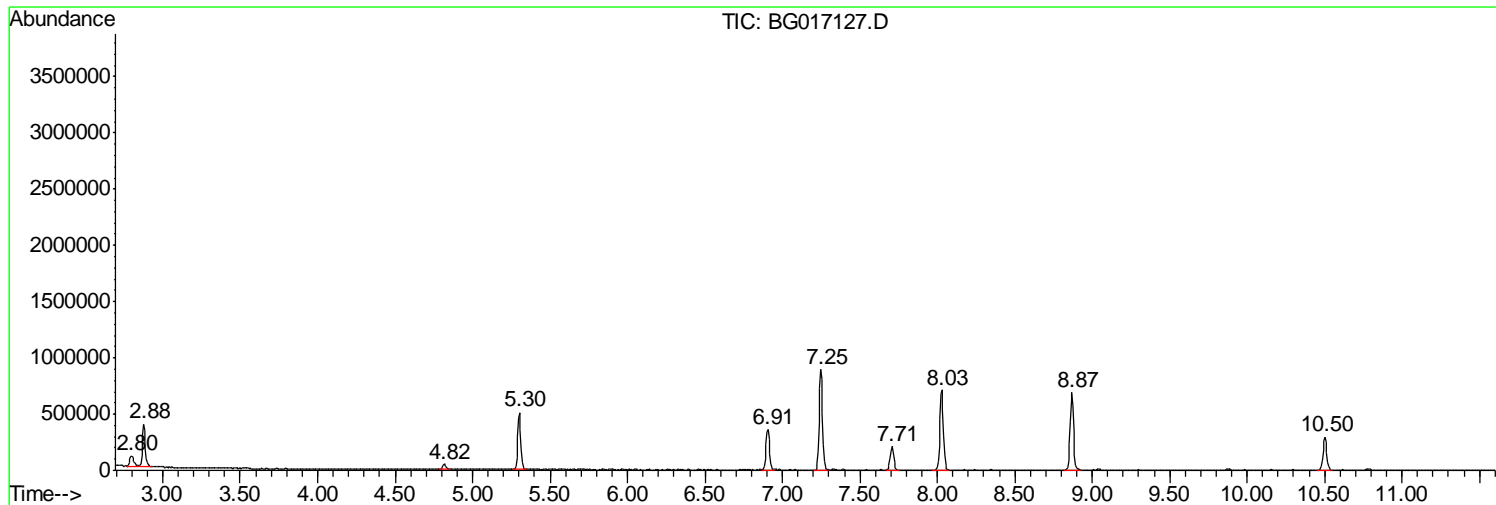
Sum of corrected areas: 19861447

Data Path : Z:\HPCHEM1\BNA_G\DATA\BG051315\
Data File : BG017127.D
Acq On : 14 May 2015 3:18
Operator : TP/IZ
Sample : G2195-08
Misc :
ALS Vial : 25 Sample Multiplier: 1

Instrument :
BNA_G
ClientSampled :
TU012-TW-05

Quant Method : Z:\HPCHEM1\BNA_G\METHODS\8270-BG051315.M
Quant Title : ASP BNA STANDARDS FOR 5 POINT CALIBRATION

TIC Library : C:\DATABASE\NIST02.L
TIC Integration Parameters: LSCINT.P



Data Path : Z:\HPCHEM1\BNA_G\DATA\BG051315\
 Data File : BG017127.D
 Acq On : 14 May 2015 3:18
 Operator : TP/IZ
 Sample : G2195-08
 Misc :
 ALS Vial : 25 Sample Multiplier: 1

Instrument :
 BNA_G
 ClientSampleID :
 TU012-TW-05

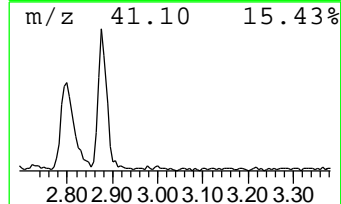
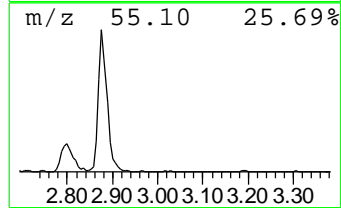
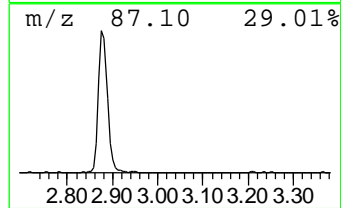
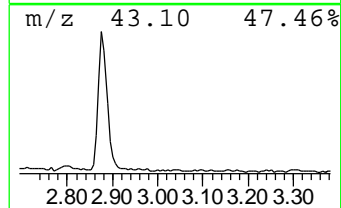
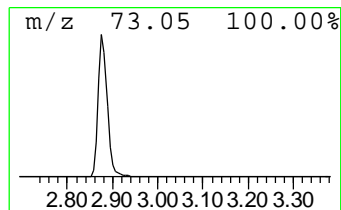
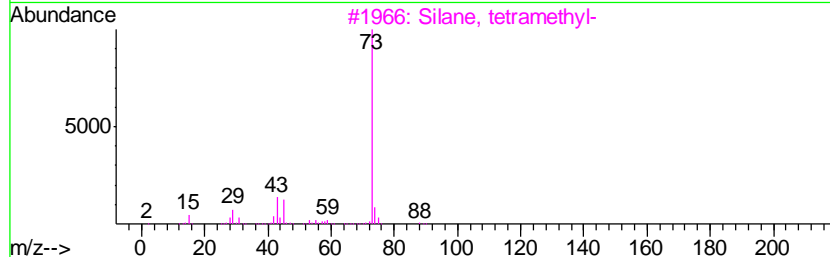
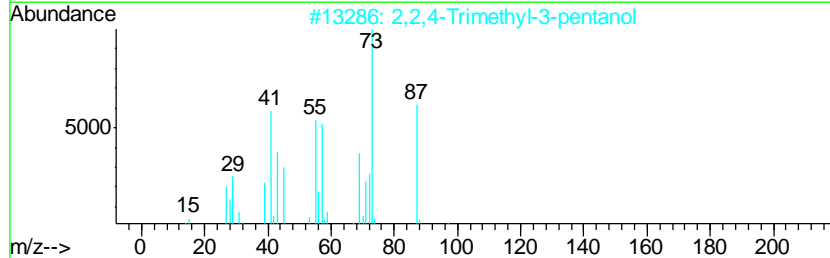
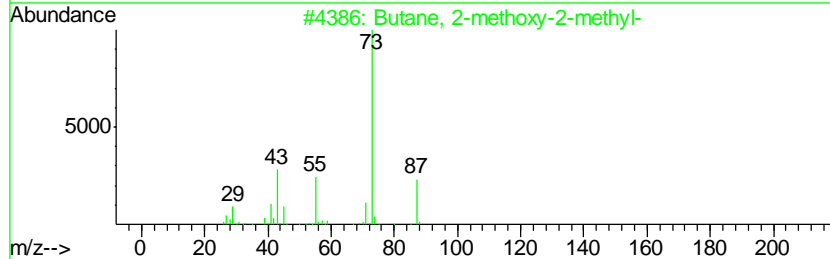
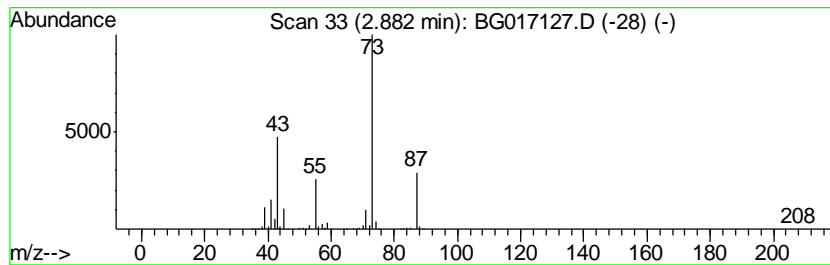
Quant Method : Z:\HPCHEM1\BNA_G\METHODS\8270-BG051315.M
 Quant Title : ASP BNA STANDARDS FOR 5 POINT CALIBRATION

TIC Library : C:\DATABASE\NIST02.L
 TIC Integration Parameters: LSCINT.P

 Peak Number 2 Butane, 2-methoxy-2-methyl- Concentration Rank 3

R.T.	EstConc	Area	Relative to ISTD	R.T.
2.88	29.03 ng	485452	1,4-Dichlorobenzene-d4	7.71

Hit#	of	Tentative ID	MW	MolForm	CAS#	Qual
1	5	Butane, 2-methoxy-2-methyl-	102	C6H14O	000994-05-8	78
2		2,2,4-Trimethyl-3-pentanol	130	C8H18O	005162-48-1	39
3		Silane, tetramethyl-	88	C4H12Si	000075-76-3	12
4		1,3-Dioxolane, 2-methyl-	88	C4H8O2	000497-26-7	9
5		2-Methyl-5-hexen-3-ol	114	C7H14O	032815-70-6	9



Data Path : Z:\HPCHEM1\BNA_G\DATA\BG051315\
 Data File : BG017127.D
 Acq On : 14 May 2015 3:18
 Operator : TP/IZ
 Sample : G2195-08
 Misc :
 ALS Vial : 25 Sample Multiplier: 1

Instrument :
 BNA_G
 ClientSampleID :
 TU012-TW-05

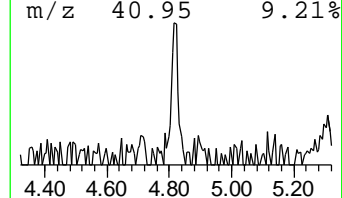
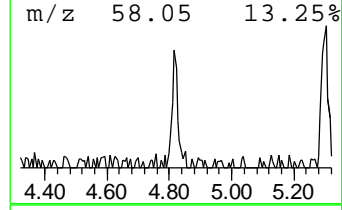
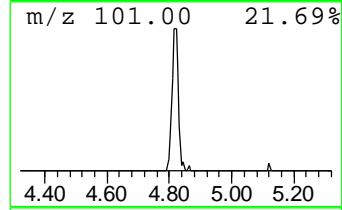
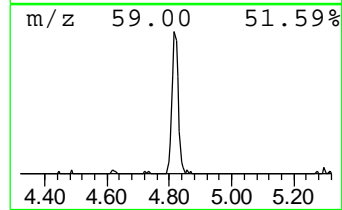
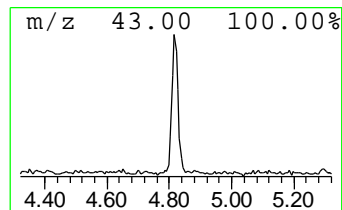
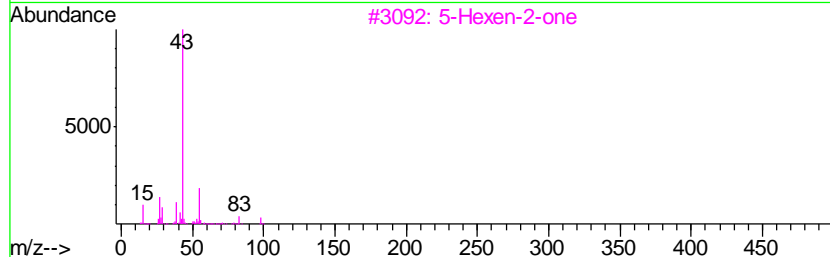
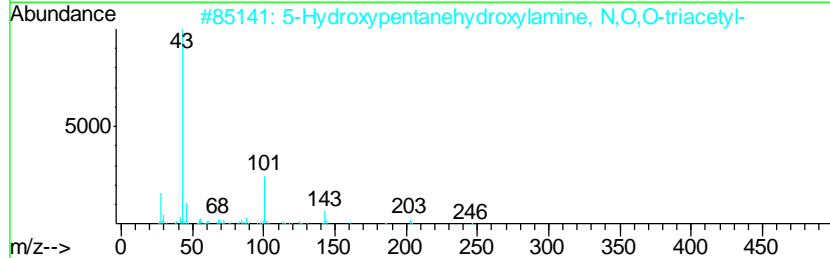
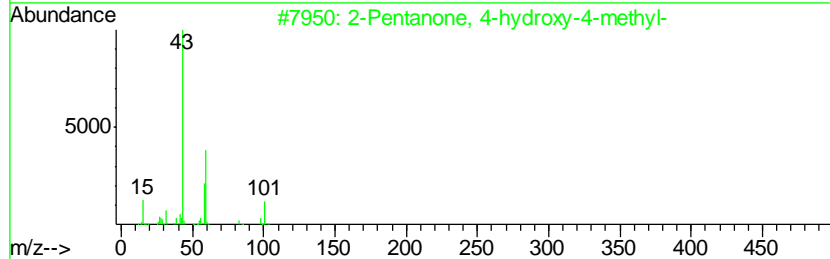
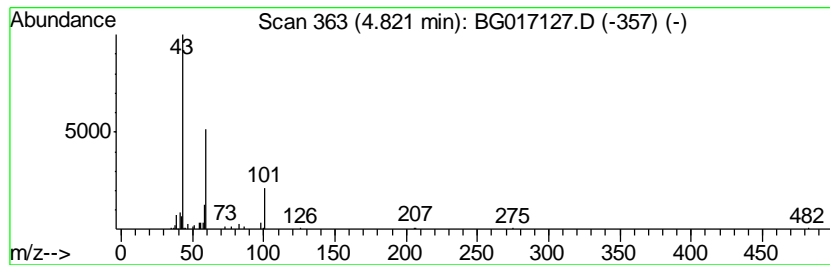
Quant Method : Z:\HPCHEM1\BNA_G\METHODS\8270-BG051315.M
 Quant Title : ASP BNA STANDARDS FOR 5 POINT CALIBRATION

TIC Library : C:\DATABASE\NIST02.L
 TIC Integration Parameters: LSCINT.P

 Peak Number 3 2-Pentanone, 4-hydroxy-4-me... Concentration Rank 5

R.T.	EstConc	Area	Relative to ISTD	R.T.
4.82	4.05 ng	67794	1,4-Dichlorobenzene-d4	7.71

Hit#	of	Tentative ID	MW	MolForm	CAS#	Qual
1	5	2-Pentanone, 4-hydroxy-4-methyl-	116	C6H12O2	000123-42-2	45
2		5-Hydroxypentanehydroxylamine, N...	245	C11H19NO5	104556-13-0	12
3		5-Hexen-2-one	98	C6H10O	000109-49-9	9
4		2,3-Butanedione, monooxime	101	C4H7NO2	000057-71-6	9
5		Propanamide, N-ethyl-	101	C5H11NO	005129-72-6	9



Data Path : Z:\HPCHEM1\BNA_G\DATA\BG051315\
 Data File : BG017127.D
 Acq On : 14 May 2015 3:18
 Operator : TP/IZ
 Sample : G2195-08
 Misc :
 ALS Vial : 25 Sample Multiplier: 1

Instrument :
 BNA_G
 ClientSampleId :
 TU012-TW-05

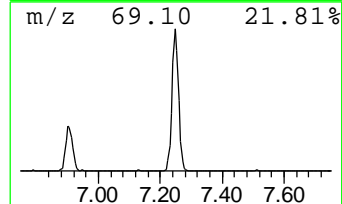
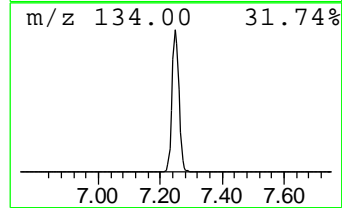
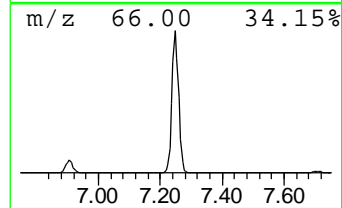
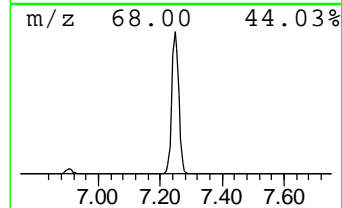
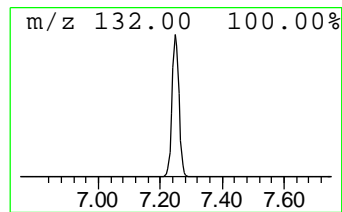
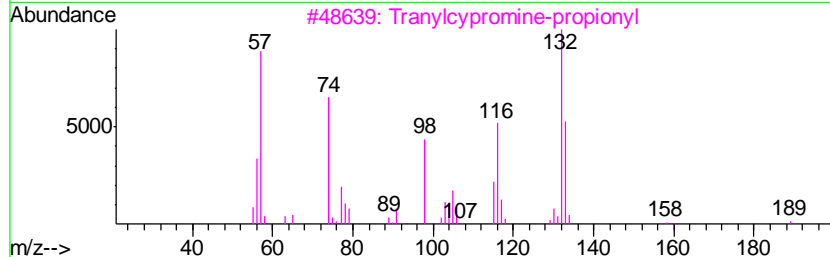
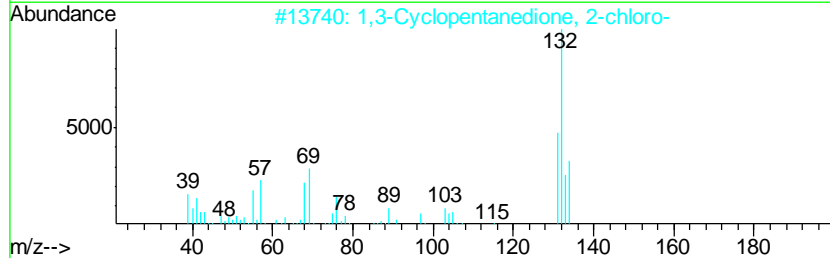
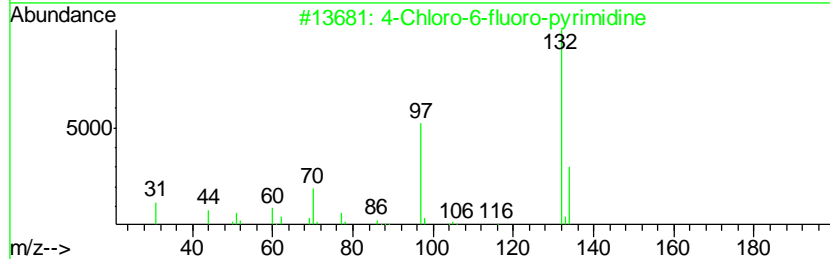
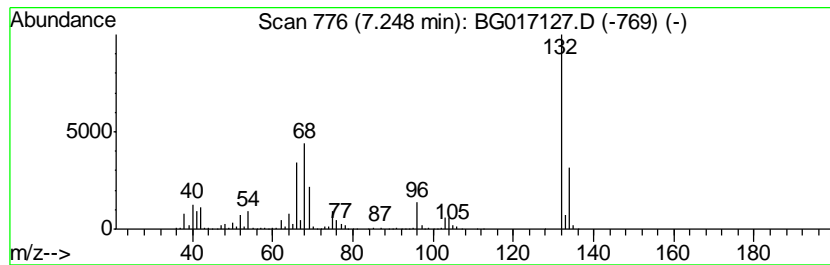
Quant Method : Z:\HPCHEM1\BNA_G\METHODS\8270-BG051315.M
 Quant Title : ASP BNA STANDARDS FOR 5 POINT CALIBRATION

TIC Library : C:\DATABASE\NIST02.L
 TIC Integration Parameters: LSCINT.P

 Peak Number 4 unknown7.25 Concentration Rank 1

R.T.	EstConc	Area	Relative to ISTD	R.T.
7.25	82.12 ng	1373130	1,4-Dichlorobenzene-d4	7.71

Hit#	of	Tentative ID	MW	MolForm	CAS#	Qual
1	5	4-Chloro-6-fluoro-pyrimidine	132	C4H2ClFN2	051422-01-6	27
2		1,3-Cyclopentanedione, 2-chloro-	132	C5H5ClO2	014203-19-1	23
3		Tranylcypromine-propionyl	189	C12H15NO	1000123-86-3	22
4		1H-Benzimidazole, 2-methyl-	132	C8H8N2	000615-15-6	22
5		3-Chloro-6-fluoro-pyrazine	132	C4H2ClFN2	1000146-10-7	16



Data Path : Z:\HPCHEM1\BNA_G\DATA\BG051315\
Data File : BG017127.D
Acq On : 14 May 2015 3:18
Operator : TP/IZ
Sample : G2195-08
Misc :
ALS Vial : 25 Sample Multiplier: 1

Instrument :
BNA_G
ClientSampleId :
TU012-TW-05

Quant Method : Z:\HPCHEM1\BNA_G\METHODS\8270-BG051315.M
Quant Title : ASP BNA STANDARDS FOR 5 POINT CALIBRATION

TIC Library : C:\DATABASE\NIST02.L
TIC Integration Parameters: LSCINT.P

TIC Top Hit name	RT	EstConc	Units	Response	--Internal Standard--			
					#	RT	Resp	Conc
Butane, 2-methoxy...	2.88	29.0	ng	485452	1	7.71	334420	20.0
2-Pentanone, 4-hy...	4.82	4.0	ng	67794	1	7.71	334420	20.0
unknown7.25	7.25	82.1	ng	1373130	1	7.71	334420	20.0