

Data Path : Z:\HPCHEM1\BNA G\DATA\BG051616\
 Data File : BG021918.D
 Acq On : 16 May 2016 22:45
 Operator : UM/SJ
 Sample : H3095-09
 Misc :
 ALS Vial : 18 Sample Multiplier: 1

Instrument :
 BNA_G
 ClientSampleId :
 D9XE6

Quant Time: May 17 01:38:22 2016
 Quant Method : Z:\HPCHEM1\BNA G\METHODS\SOM02.2-EPA-BG050916.M
 Quant Title : SVOA CALIBRATION
 QLast Update : Tue May 17 01:35:08 2016
 Response via : Initial Calibration

Internal Standards	R.T.	QIon	Response	Conc	Units	Dev(Min)
1) 1,4-Dichlorobenzene-d4	8.17	152	74874	20.00	ng/ul	0.00
18) Naphthalene-d8	10.99	136	346455	20.00	ng/ul	0.00
36) Acenaphthene-d10	14.80	164	198468	20.00	ng/ul	0.00
62) Phenanthrene-d10	17.54	188	404682	20.00	ng/ul	0.00
76) Chrysene-d12	21.82	240	388644	20.00	ng/ul	0.00
84) Perylene-d12	25.18	264	398734	20.00	ng/ul	0.03

System Monitoring Compounds

3) 1,4-Dioxane-d8	3.55	96	5383	3.47	ng/uL	0.00
5) Phenol-d5	7.32	99	120986	21.78	ng/ul	0.00
7) Bis-(2-Chloroethyl)ether-d	7.49	67	55044	19.98	ng/ul	0.00
9) 2-Chlorophenol-d4	7.70	132	109045	25.29	ng/ul	0.00
13) 4-Methylphenol-d8	8.87	113	103082	22.09	ng/ul	0.00
19) Nitrobenzene-d5	9.34	128	54513	23.93	ng/ul	0.01
22) 2-Nitrophenol-d4	10.07	143	60467	42.03	ng/ul	0.00
26) 2,4-Dichlorophenol-d3	10.72	165	200	0.05	ng/ul	0.12
29) 4-Chloroaniline-d4	11.12	131	82989	18.94	ng/ul	0.00
44) Dimethylphthalate-d6	14.19	166	332271	23.84	ng/ul	0.00
47) Acenaphthylene-d8	14.49	160	458863	23.18	ng/ul	0.00
52) 4-Nitrophenol-d4	15.00	143	39677	16.60	ng/ul	0.02
58) Fluorene-d10	15.78	176	316725	21.58	ng/ul	0.00
63) 4,6-Dinitro-2-methylphenol	15.90	200	32638	29.12	ng/ul	0.00
71) Anthracene-d10	17.64	188	432427	21.95	ng/ul	0.00
77) Pyrene-d10	19.91	212	442207	24.31	ng/ul	0.00
88) Benzo(a)pyrene-d12	24.94	264	417426	22.03	ng/ul	0.02

Target Compounds

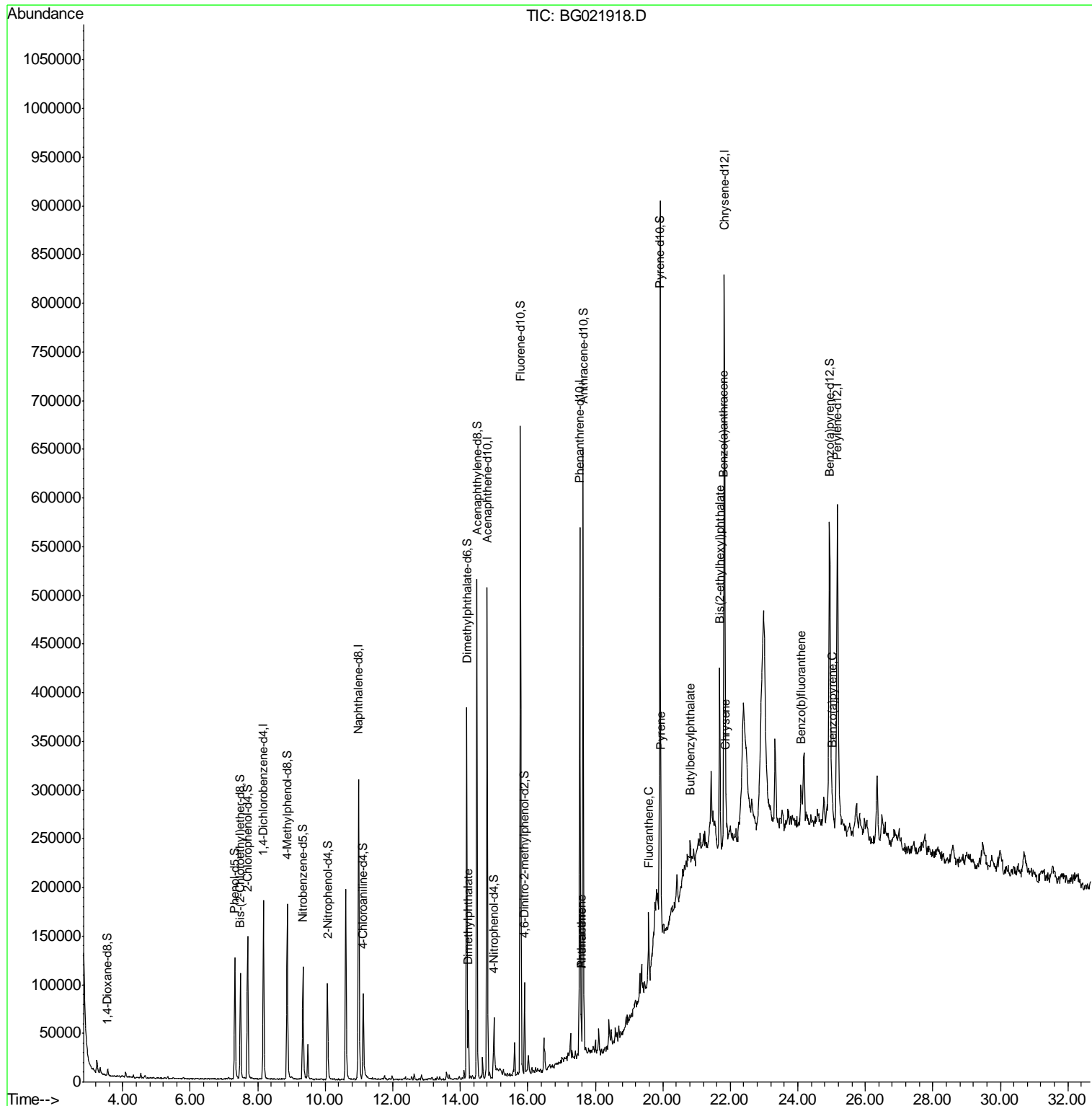
Target Compounds	R.T.	QIon	Response	Conc	Units	Ovalue
45) Dimethylphthalate	14.24	163	57429	4.04	ng/ul	99
70) Phenanthrene	17.58	178	29176	1.32	ng/ul	98
72) Anthracene	17.58	178	29292	1.30	ng/ul	100
75) Fluoranthene	19.58	202	48904	1.95	ng/ul	96
78) Pyrene	19.94	202	43733	1.94	ng/ul	95
79) Butylbenzylphthalate	20.81	149	6803	1.37	ng/ul	92
81) Benzo(a)anthracene	21.81	228	26331	1.22	ng/ul#	86
82) Bis(2-ethylhexyl)phthalate	21.69	149	102135	12.59	ng/ul	95
83) Chrysene	21.87	228	28666	1.34	ng/ul#	88
86) Benzo(b)fluoranthene	24.11	252	50486	2.21	ng/ul#	75
89) Benzo(a)pyrene	25.02	252	28815	1.27	ng/ul#	72

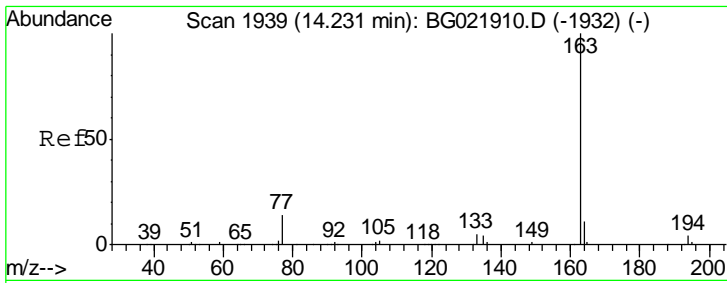
(#) = qualifier out of range (m) = manual integration (+) = signals summed

Data Path : Z:\HPCHEM1\BNA G\DATA\BG051616\
 Data File : BG021918.D
 Acq On : 16 May 2016 22:45
 Operator : UM/SJ
 Sample : H3095-09
 Misc :
 ALS Vial : 18 Sample Multiplier: 1

Instrument :
 BNA_G
 ClientSampleId :
 D9XE6

Quant Time: May 17 01:38:22 2016
 Quant Method : Z:\HPCHEM1\BNA G\METHODS\SOM02.2-EPA-BG050916.M
 Quant Title : SVOA CALIBRATION
 QLast Update : Tue May 17 01:35:08 2016
 Response via : Initial Calibration

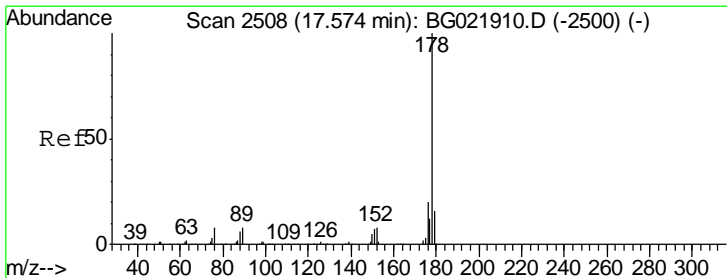
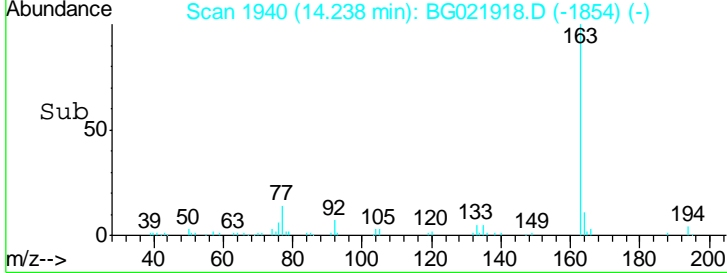
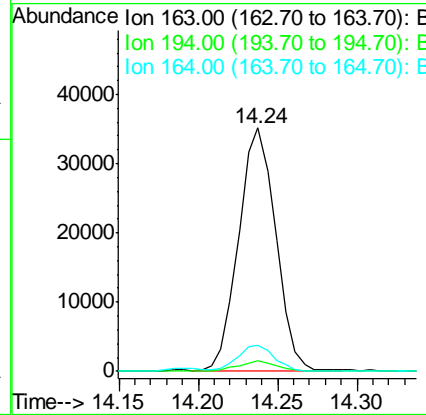
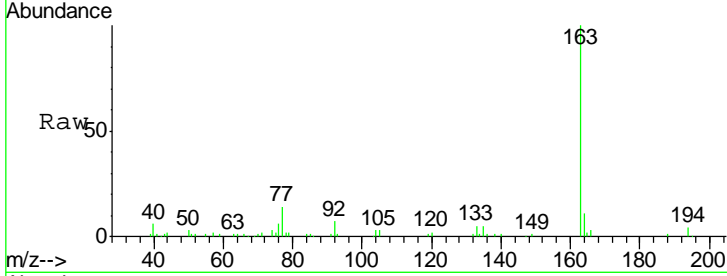




#45
 Dimethylphthalate
 Concen: 4.04 ng/ul
 RT: 14.24 min Scan# 1940
 Delta R.T. 0.01 min
 Lab File: BG021918.D
 Acq: 16 May 2016 22:45

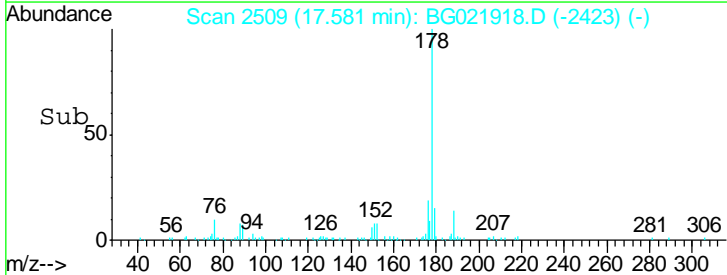
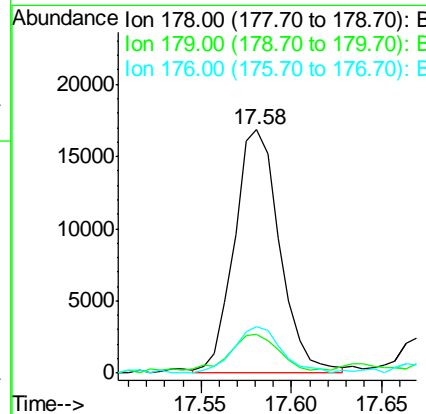
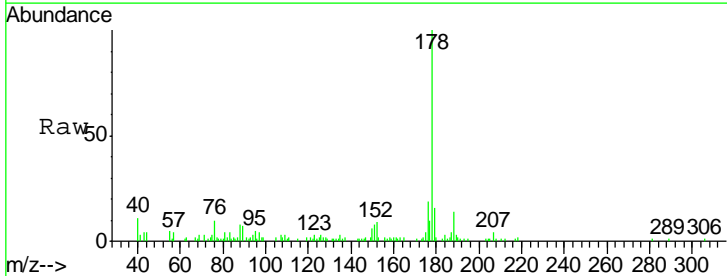
Instrument :
 BNA_G
 ClientSampleID :
 D9XE6

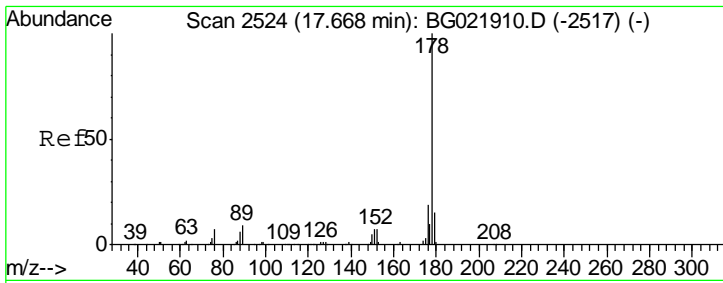
Tgt Ion	Resp	Lower	Upper
163	100		
194	4.5	3.9	5.9
164	10.7	8.7	13.1



#70
 Phenanthrene
 Concen: 1.32 ng/ul
 RT: 17.58 min Scan# 2509
 Delta R.T. 0.01 min
 Lab File: BG021918.D
 Acq: 16 May 2016 22:45

Tgt Ion	Resp	Lower	Upper
178	100		
179	16.0	11.8	17.8
176	19.3	14.8	22.2

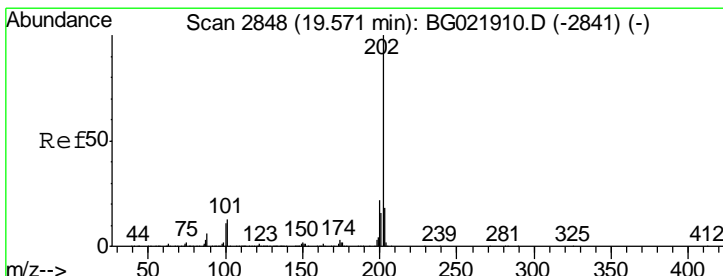
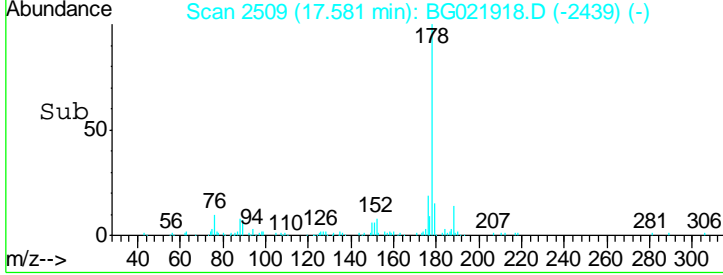
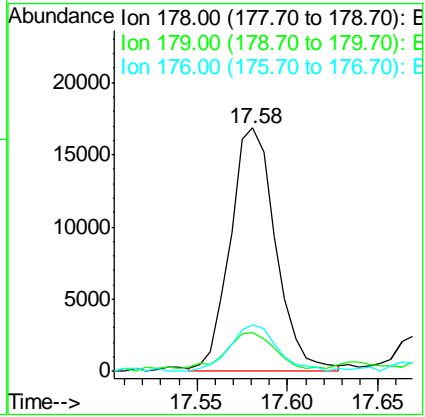
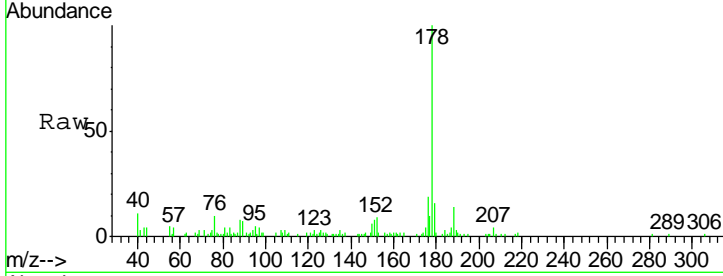




#72
 Anthracene
 Concen: 1.30 ng/ul
 RT: 17.58 min Scan# 2509
 Delta R.T. -0.09 min
 Lab File: BG021918.D
 Acq: 16 May 2016 22:45

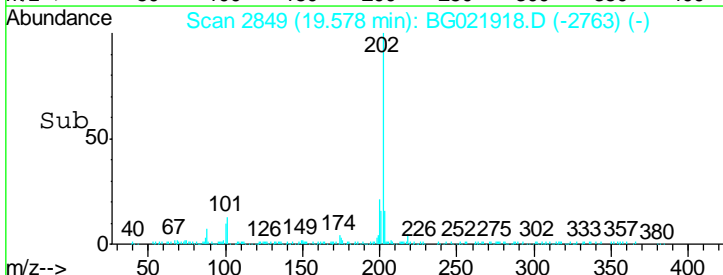
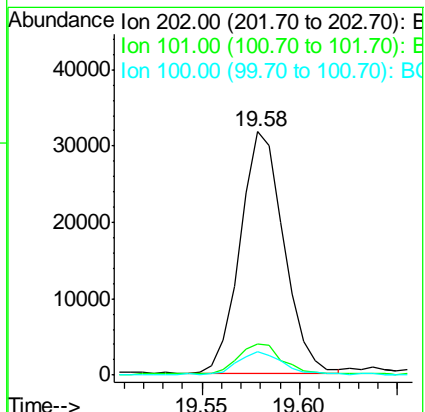
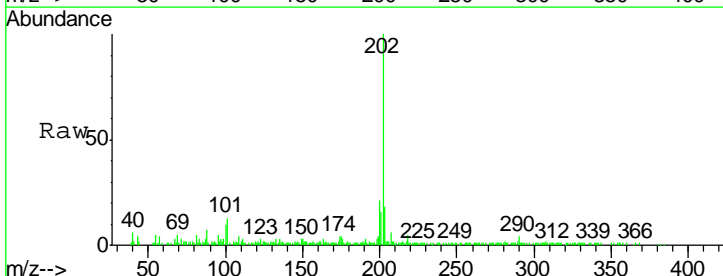
Instrument :
 BNA_G
 ClientSampled :
 D9XE6

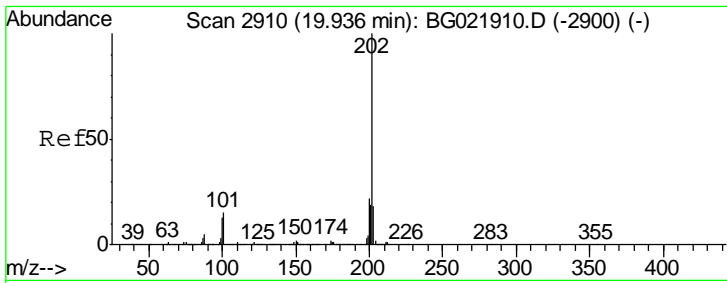
Tgt Ion	Resp	Lower	Upper
178	29292		
179	16.0	12.9	19.3
176	19.3	15.6	23.4



#75
 Fluoranthene
 Concen: 1.95 ng/ul
 RT: 19.58 min Scan# 2849
 Delta R.T. 0.01 min
 Lab File: BG021918.D
 Acq: 16 May 2016 22:45

Tgt Ion	Resp	Lower	Upper
202	48904		
101	12.8	8.9	13.3
100	9.8	7.0	10.4

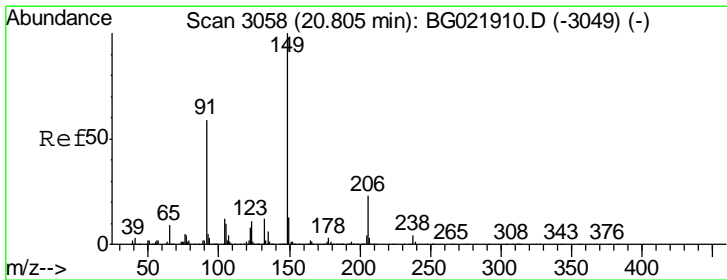
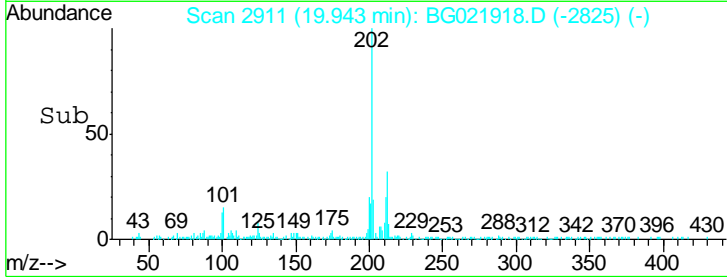
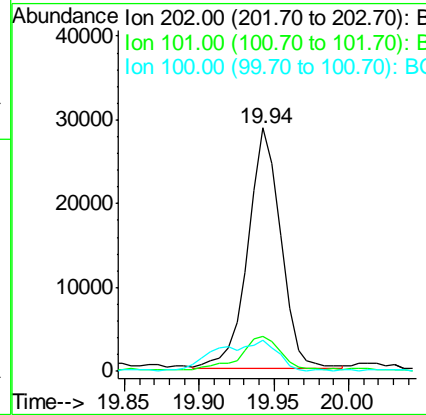
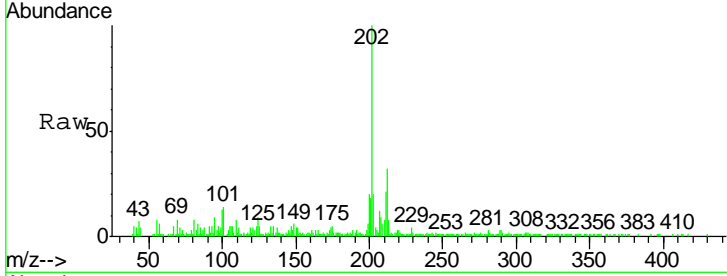




#78
 Pyrene
 Concen: 1.94 ng/ul
 RT: 19.94 min Scan# 2911
 Delta R.T. 0.01 min
 Lab File: BG021918.D
 Acq: 16 May 2016 22:45

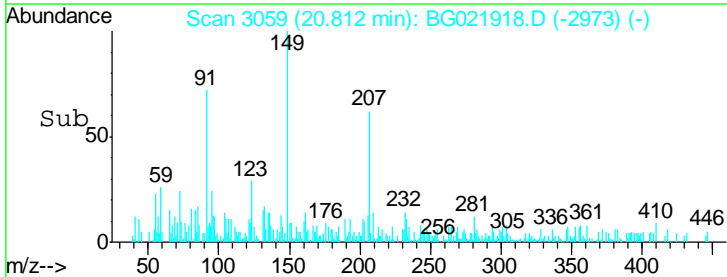
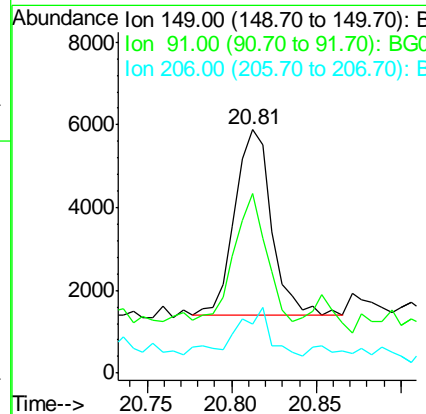
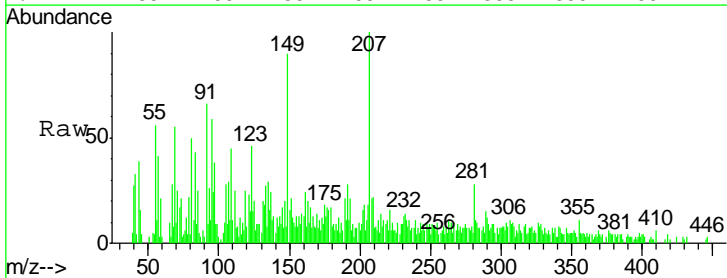
Instrument :
 BNA_G
 ClientSampled :
 D9XE6

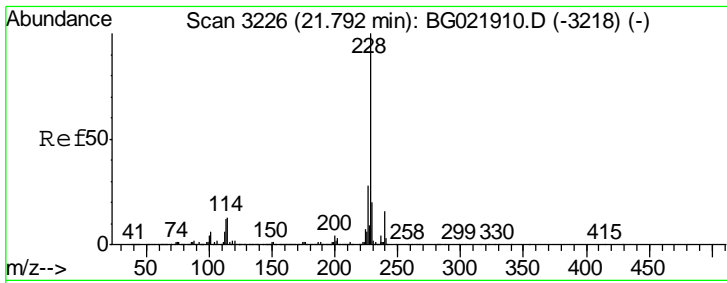
Tgt Ion	Resp	Lower	Upper
202	43733		
101	14.5	9.8	14.8
100	12.9	9.3	13.9



#79
 Butylbenzylphthalate
 Concen: 1.37 ng/ul
 RT: 20.81 min Scan# 3059
 Delta R.T. 0.01 min
 Lab File: BG021918.D
 Acq: 16 May 2016 22:45

Tgt Ion	Resp	Lower	Upper
149	6803		
91	74.0	65.8	98.8
206	20.1	15.5	23.3

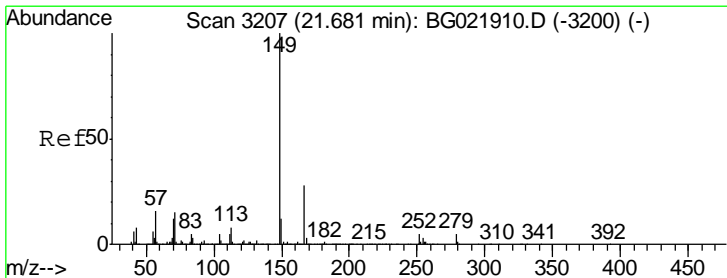
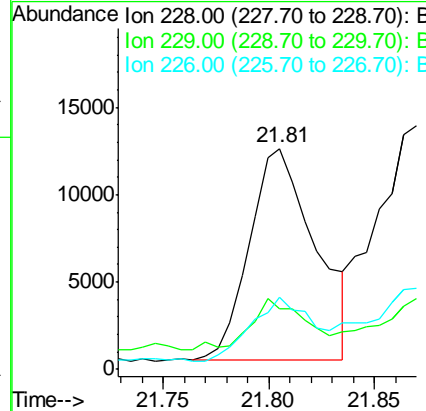
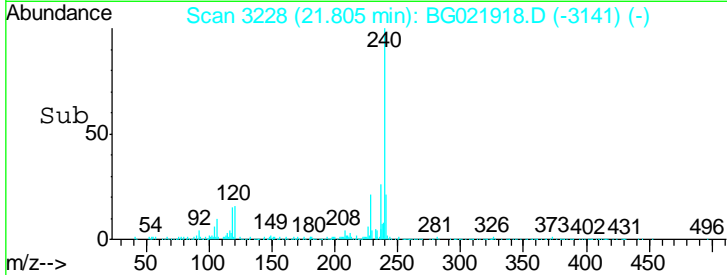
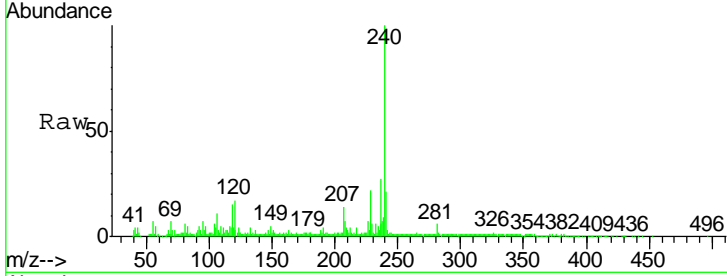




#81
 Benzo(a)anthracene
 Concen: 1.22 ng/ul
 RT: 21.81 min Scan# 3228
 Delta R.T. 0.01 min
 Lab File: BG021918.D
 Acq: 16 May 2016 22:45

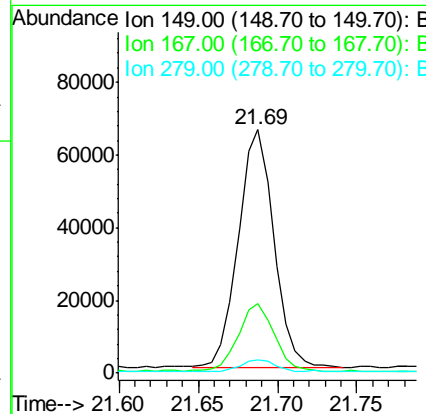
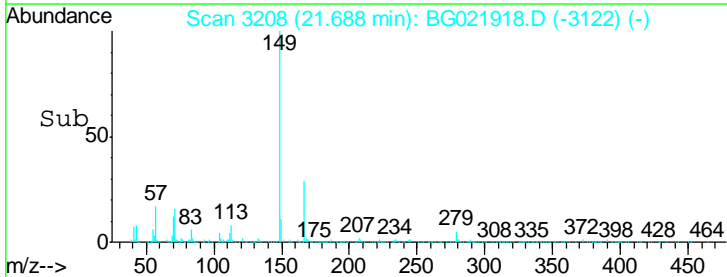
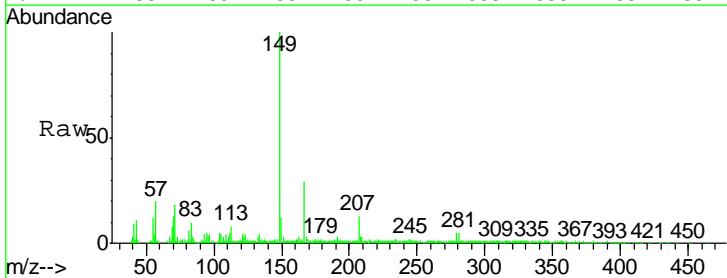
Instrument :
 BNA_G
 ClientSampleID :
 D9XE6

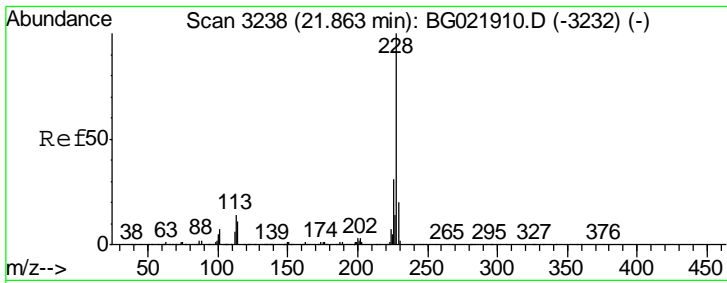
Tgt Ion	Resp	Lower	Upper
228	100		
229	27.7	16.6	25.0#
226	33.0	21.0	31.4#



#82
 Bis(2-ethylhexyl)phthalate
 Concen: 12.59 ng/ul
 RT: 21.69 min Scan# 3208
 Delta R.T. 0.01 min
 Lab File: BG021918.D
 Acq: 16 May 2016 22:45

Tgt Ion	Resp	Lower	Upper
149	100		
167	28.6	20.5	30.7
279	5.4	3.7	5.5

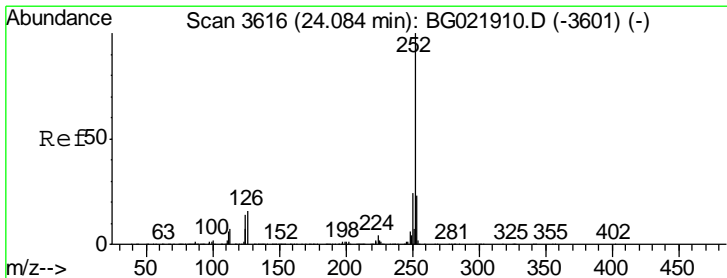
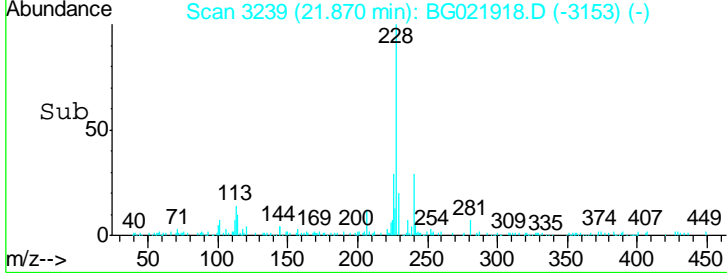
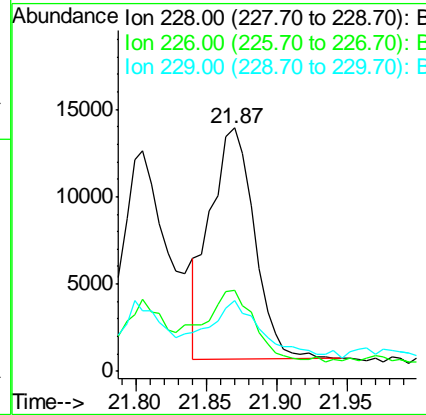
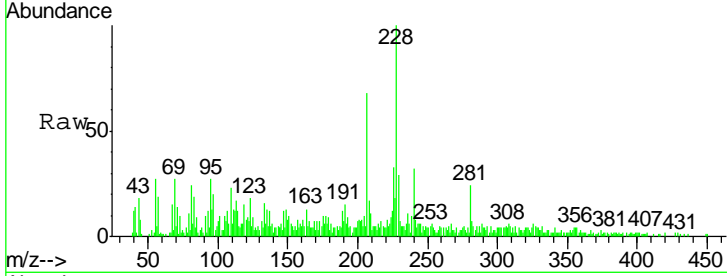




#83
 Chrysene
 Concen: 1.34 ng/ul
 RT: 21.87 min Scan# 3239
 Delta R.T. 0.01 min
 Lab File: BG021918.D
 Acq: 16 May 2016 22:45

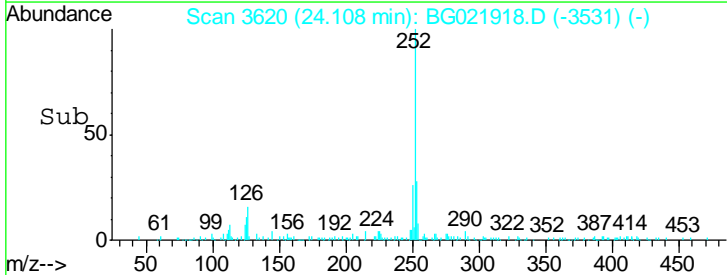
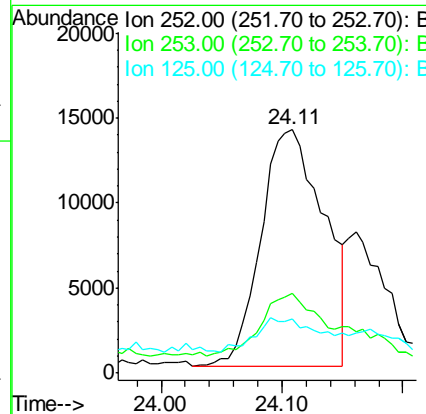
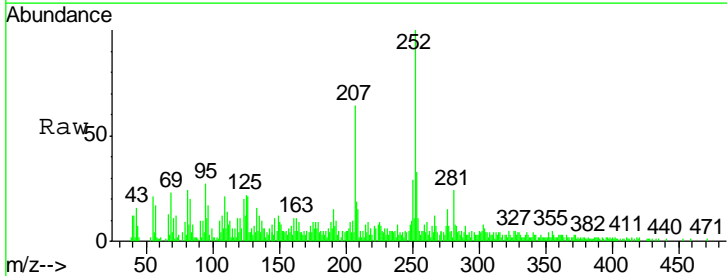
Instrument :
 BNA_G
 ClientSampled :
 D9XE6

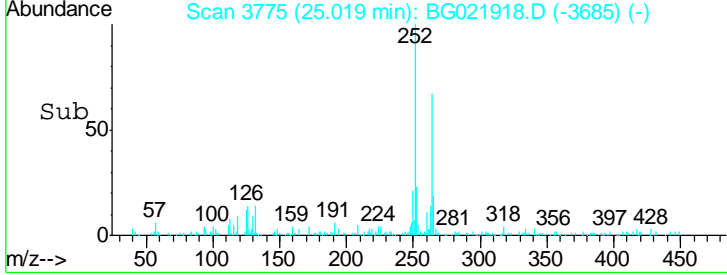
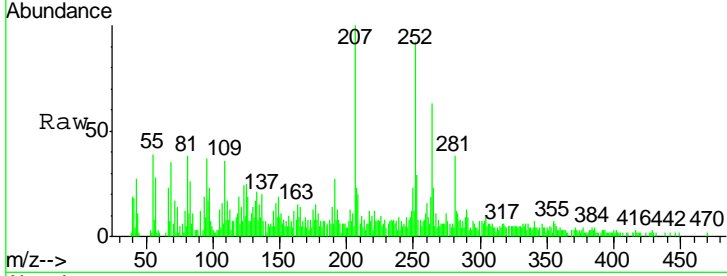
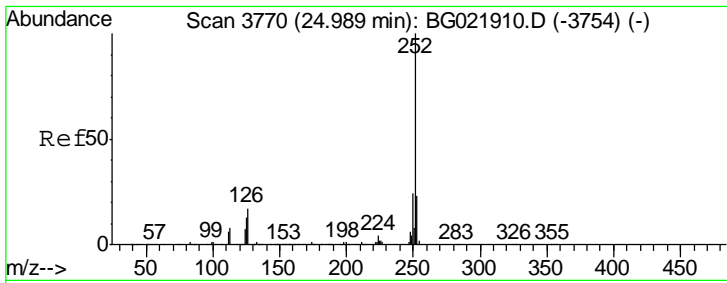
Tgt Ion	Resp	Lower	Upper
228	100		
226	33.0	23.4	35.2
229	29.1	16.2	24.2#



#86
 Benzo(b)fluoranthene
 Concen: 2.21 ng/ul
 RT: 24.11 min Scan# 3620
 Delta R.T. 0.02 min
 Lab File: BG021918.D
 Acq: 16 May 2016 22:45

Tgt Ion	Resp	Lower	Upper
252	100		
253	32.9	18.1	27.1#
125	22.1	7.6	11.4#





#89
 Benzo(a)pyrene
 Concen: 1.27 ng/ul
 RT: 25.02 min Scan# 3775
 Delta R.T. 0.03 min
 Lab File: BG021918.D
 Acq: 16 May 2016 22:45

Instrument :
 BNA_G
 ClientSampleId :
 D9XE6

Tot Ion	252	Resp	28815
Ion Ratio	Lower	Upper	
252	100		
253	31.3	17.4	26.0#
125	26.9	8.2	12.2#

