

Data Path : Z:\HPCHEM1\BNA G\DATA\BG051617\
 Data File : BG026992.D
 Acq On : 17 May 2017 00:09
 Operator : SJ/MA
 Sample : I3106-17
 Misc :
 ALS Vial : 13 Sample Multiplier: 1

Instrument :
 BNA_G
 ClientSampled :
 ESXS4

Integration Parameters: LSCINT.P

Integrator: RTE
 Smoothing : ON Filtering: 5
 Sampling : 1 Min Area: 0.1 % of largest Peak
 Start Thrs: 0.1 Max Peaks: 100
 Stop Thrs : 0 Peak Location: TOP

If leading or trailing edge < 100 prefer < Baseline drop else tangent >
 Peak separation: 1

Method : Z:\HPCHEM1\BNA_G\METHODS\SOM-EPA-BG042717.M
 Title : SVOA CALIBRATION

Signal : TIC

peak #	R.T. min	first scan	max scan	last scan	PK TY	peak height	corr. area	corr. % max.	% of total
1	3.399	48	53	79	rVB	277891	530712	19.18%	1.537%
2	3.781	114	118	122	rBV6	3546	5740	0.21%	0.017%
3	4.175	180	185	194	rBV5	5968	11759	0.42%	0.034%
4	5.109	341	344	348	rVV4	4451	5809	0.21%	0.017%
5	5.644	429	435	444	rBV5	5720	16941	0.61%	0.049%
6	6.020	493	499	504	rBV5	4364	9415	0.34%	0.027%
7	6.220	527	533	539	rVB7	3620	9668	0.35%	0.028%
8	7.183	685	697	714	rBV2	88150	247185	8.93%	0.716%
9	7.324	714	721	733	rVV	358700	602054	21.76%	1.744%
10	7.542	747	758	773	rBV	365286	667945	24.14%	1.935%
11	8.006	824	837	852	rBV	605391	1066278	38.54%	3.089%
12	8.311	880	889	893	rBV6	4906	13913	0.50%	0.040%
13	8.546	925	929	936	rVB3	5126	9056	0.33%	0.026%
14	8.717	951	958	985	rBV	257417	565071	20.42%	1.637%
15	9.163	1025	1034	1043	rBV	409896	746757	26.99%	2.163%
16	9.240	1043	1047	1053	rVB2	19240	32418	1.17%	0.094%
17	9.328	1056	1062	1065	rBV5	5400	8694	0.31%	0.025%
18	9.580	1099	1105	1112	rVB2	9555	15703	0.57%	0.045%
19	9.886	1149	1157	1171	rBV	334997	635672	22.97%	1.841%
20	10.209	1206	1212	1223	rBV3	30531	58956	2.13%	0.171%
21	10.344	1230	1235	1241	rBV7	6172	12789	0.46%	0.037%
22	10.438	1242	1251	1271	rBV	447444	962901	34.80%	2.789%
23	10.803	1302	1313	1319	rVV	993673	1791826	64.76%	5.190%
24	10.855	1319	1322	1331	rVB	60217	103648	3.75%	0.300%
25	10.973	1334	1342	1351	rVB7	10236	28946	1.05%	0.084%
26	11.102	1360	1364	1368	rVB7	3926	7564	0.27%	0.022%
27	11.461	1422	1425	1432	rBV8	4714	10228	0.37%	0.030%
28	12.066	1522	1528	1533	rVB3	11379	18336	0.66%	0.053%
29	12.383	1573	1582	1589	rBV7	10899	24554	0.89%	0.071%
30	12.454	1590	1594	1601	rVB8	6599	12788	0.46%	0.037%
31	12.595	1612	1618	1624	rVB9	4144	7273	0.26%	0.021%
32	12.683	1624	1633	1639	rVB9	6569	17663	0.64%	0.051%
33	12.759	1639	1646	1655	rBV9	4469	17321	0.63%	0.050%
34	13.059	1693	1697	1700	rBV6	4631	6960	0.25%	0.020%

Data Path : Z:\HPCHEM1\BNA G\DATA\BG051617\
 Data File : BG026992.D
 Acq On : 17 May 2017 00:09
 Operator : SJ/MA
 Sample : I3106-17
 Misc :
 ALS Vial : 13 Sample Multiplier: 1

Instrument :
 BNA_G
 ClientSampleId :
 ESXS4

Integration Parameters: LSCINT.P

Integrator: RTE
 Smoothing : ON Filtering: 5
 Sampling : 1 Min Area: 0.1 % of largest Peak
 Start Thrs: 0.1 Max Peaks: 100
 Stop Thrs : 0 Peak Location: TOP

If leading or trailing edge < 100 prefer < Baseline drop else tangent >
 Peak separation: 1

Method : Z:\HPCHEM1\BNA_G\METHODS\SOM-EPA-BG042717.M
 Title : SVOA CALIBRATION

35	13.217	1719	1724	1731	rBV10	9033	26050	0.94%	0.075%
36	13.435	1758	1761	1764	rVB5	5886	7038	0.25%	0.020%
37	13.488	1764	1770	1772	rBV7	6926	11844	0.43%	0.034%
38	13.588	1783	1787	1792	rVB7	4576	6503	0.24%	0.019%
39	13.793	1815	1822	1825	rBV8	6737	12419	0.45%	0.036%
40	13.940	1843	1847	1852	rBV6	5497	11338	0.41%	0.033%
41	14.016	1852	1860	1864	rVV	997384	1452845	52.51%	4.208%
42	14.063	1864	1868	1878	rVV	196493	296342	10.71%	0.858%
43	14.175	1883	1887	1889	rVB5	6039	6834	0.25%	0.020%
44	14.193	1889	1890	1897	rBV7	5001	8910	0.32%	0.026%
45	14.310	1901	1910	1923	rBV	1150406	1838274	66.44%	5.325%
46	14.498	1935	1942	1949	rVB2	22806	36887	1.33%	0.107%
47	14.616	1951	1962	1970	rBV2	1446331	2314820	83.66%	6.705%
48	14.669	1970	1971	1982	rVB10	10509	18880	0.68%	0.055%
49	14.763	1983	1987	1991	rVB6	4309	8684	0.31%	0.025%
50	14.862	1999	2004	2013	rBV7	30148	90281	3.26%	0.262%
51	14.945	2014	2018	2020	rVB5	5916	8335	0.30%	0.024%
52	15.033	2029	2033	2040	rVB8	16834	29892	1.08%	0.087%
53	15.109	2042	2046	2054	rVB9	12923	24509	0.89%	0.071%
54	15.192	2055	2060	2067	rVB10	9400	19061	0.69%	0.055%
55	15.362	2085	2089	2090	rVB3	4828	5735	0.21%	0.017%
56	15.397	2092	2095	2098	rBV	13521	22040	0.80%	0.064%
57	15.450	2100	2104	2108	rVB	69425	91190	3.30%	0.264%
58	15.503	2109	2113	2116	rVV6	7044	9676	0.35%	0.028%
59	15.603	2122	2130	2145	rBV	1439021	2253514	81.45%	6.527%
60	15.732	2145	2152	2163	rBV	286083	464304	16.78%	1.345%
61	15.844	2165	2171	2176	rVB4	39297	78545	2.84%	0.228%
62	15.885	2176	2178	2184	rVB7	10321	16625	0.60%	0.048%
63	15.949	2184	2189	2194	rBV8	13342	22330	0.81%	0.065%
64	15.996	2194	2197	2204	rBV7	13640	23716	0.86%	0.069%
65	16.067	2204	2209	2213	rBV6	15678	23993	0.87%	0.069%
66	16.179	2223	2228	2233	rBV9	8176	13588	0.49%	0.039%
67	16.249	2238	2240	2244	rBV5	9996	15105	0.55%	0.044%
68	16.302	2244	2249	2261	rVV	95137	186526	6.74%	0.540%
69	16.484	2276	2280	2285	rBV8	12528	16328	0.59%	0.047%
70	16.549	2288	2291	2293	rBV4	5748	6565	0.24%	0.019%
71	16.654	2303	2309	2316	rBV4	20178	61957	2.24%	0.179%

Data Path : Z:\HPCHEM1\BNA G\DATA\BG051617\
 Data File : BG026992.D
 Acq On : 17 May 2017 00:09
 Operator : SJ/MA
 Sample : I3106-17
 Misc :
 ALS Vial : 13 Sample Multiplier: 1

Instrument :
 BNA_G
 ClientSampleId :
 ESXS4

Integration Parameters: LSCINT.P

Integrator: RTE
 Smoothing : ON Filtering: 5
 Sampling : 1 Min Area: 0.1 % of largest Peak
 Start Thrs: 0.1 Max Peaks: 100
 Stop Thrs : 0 Peak Location: TOP

If leading or trailing edge < 100 prefer < Baseline drop else tangent >
 Peak separation: 1

Method : Z:\HPCHEM1\BNA G\METHODS\SOM-EPA-BG042717.M
 Title : SVOA CALIBRATION

72	16.701	2316	2317	2321	rVB4	10452	10970	0.40%	0.032%
73	16.754	2322	2326	2332	rVV8	16234	33623	1.22%	0.097%
74	16.807	2332	2335	2339	rVB4	10354	11950	0.43%	0.035%
75	17.095	2379	2384	2388	rBV	53593	69423	2.51%	0.201%
76	17.148	2388	2393	2398	rVB4	19333	31840	1.15%	0.092%
77	17.224	2403	2406	2408	rBV4	7480	7330	0.26%	0.021%
78	17.348	2421	2427	2436	rBV2	1459013	2334011	84.36%	6.761%
79	17.448	2438	2444	2453	rBV2	1379336	2096759	75.78%	6.073%
80	17.736	2490	2493	2500	rBV9	7387	12549	0.45%	0.036%
81	17.830	2505	2509	2513	rBV4	21678	24105	0.87%	0.070%
82	18.235	2571	2578	2587	rBV	286925	523052	18.90%	1.515%
83	18.893	2688	2690	2696	rVB7	7908	11443	0.41%	0.033%
84	19.369	2765	2771	2782	rBV5	32091	90126	3.26%	0.261%
85	19.498	2788	2793	2805	rBV2	318791	532220	19.24%	1.542%
86	19.727	2825	2832	2842	rVB2	1523987	2209458	79.85%	6.400%
87	20.726	3000	3002	3009	rVB5	13640	20089	0.73%	0.058%
88	21.472	3119	3129	3139	rBV5	27224	99626	3.60%	0.289%
89	21.596	3142	3150	3159	rVB	1508192	2387567	86.29%	6.916%
90	22.360	3276	3280	3284	rBV7	25034	51124	1.85%	0.148%
91	22.730	3340	3343	3350	rVB8	15645	21307	0.77%	0.062%
92	23.029	3389	3394	3401	rVB2	45411	83673	3.02%	0.242%
93	23.811	3521	3527	3536	rVB2	68641	148434	5.36%	0.430%
94	24.539	3640	3651	3675	rBV2	739971	2252832	81.42%	6.525%
95	24.757	3675	3688	3720	rVB2	793751	2766840	100.00%	8.014%
96	25.826	3862	3870	3880	rBV3	87859	240811	8.70%	0.698%
97	27.130	4083	4092	4108	rVB2	85848	290499	10.50%	0.841%
98	28.253	4280	4283	4285	rVB4	8825	9692	0.35%	0.028%
99	28.729	4351	4364	4379	rVB5	59495	241294	8.72%	0.699%
100	30.620	4676	4686	4687	rBV9	41912	86926	3.14%	0.252%

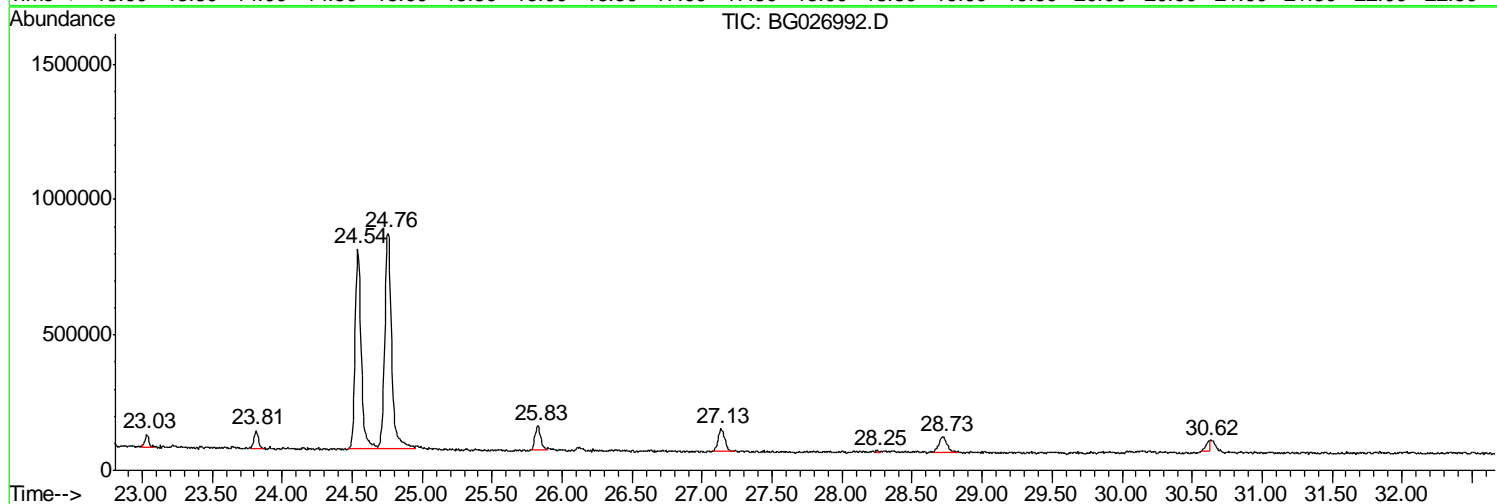
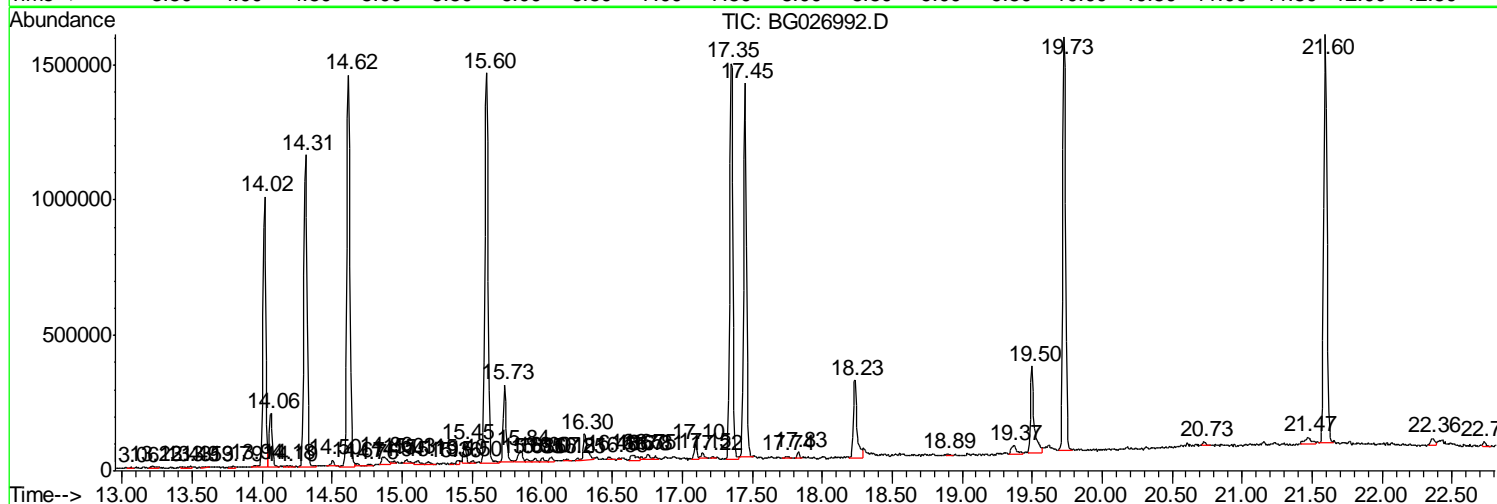
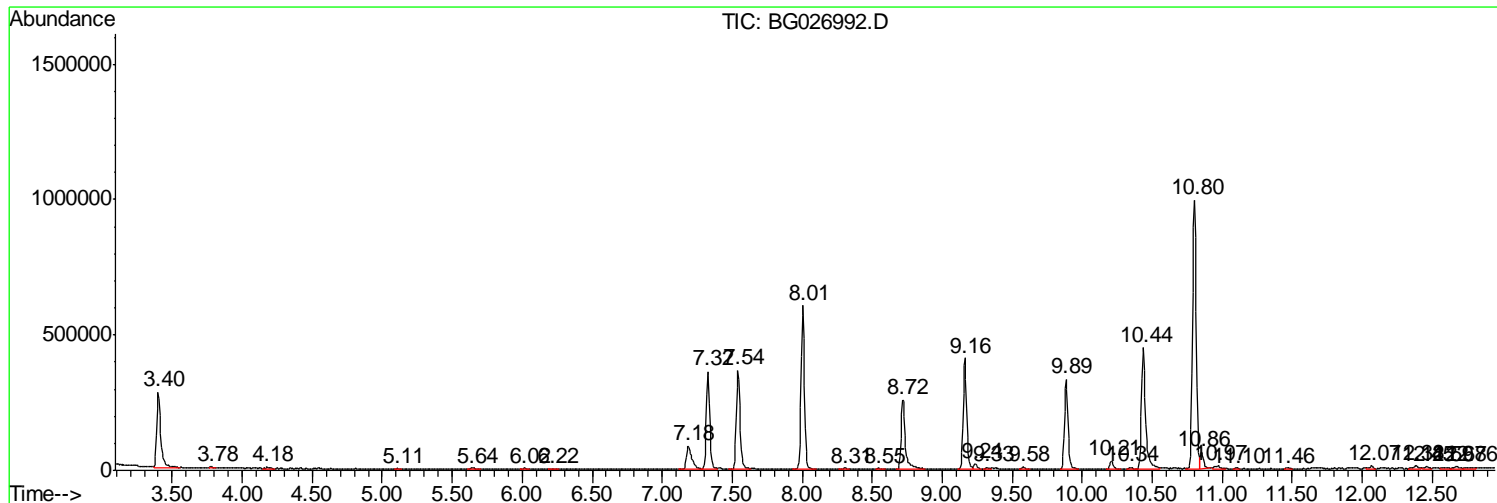
Sum of corrected areas: 34523599

Data Path : Z:\HPCHEM1\BNA G\DATA\BG051617\
 Data File : BG026992.D
 Acq On : 17 May 2017 00:09
 Operator : SJ/MA
 Sample : I3106-17
 Misc :
 ALS Vial : 13 Sample Multiplier: 1

Instrument :
 BNA_G
 ClientSampleId :
 ESXS4

Quant Method : Z:\HPCHEM1\BNA G\METHODS\SOM-EPA-BG042717.M
 Quant Title : SVOA CALIBRATION

TIC Library : C:\DATABASE\NIST11.L
 TIC Integration Parameters: LSCINT.P



Data Path : Z:\HPCHEM1\BNA G\DATA\BG051617\
 Data File : BG026992.D
 Acq On : 17 May 2017 00:09
 Operator : SJ/MA
 Sample : I3106-17
 Misc :
 ALS Vial : 13 Sample Multiplier: 1

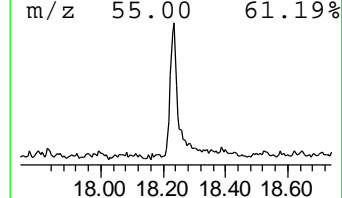
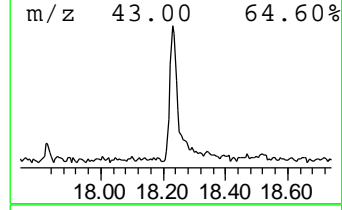
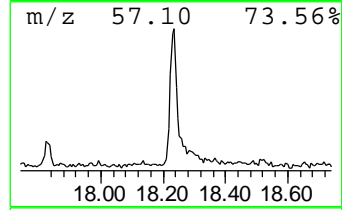
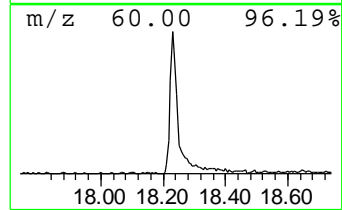
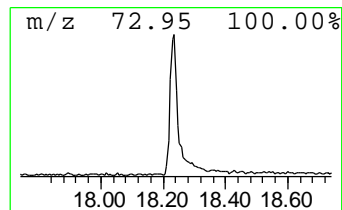
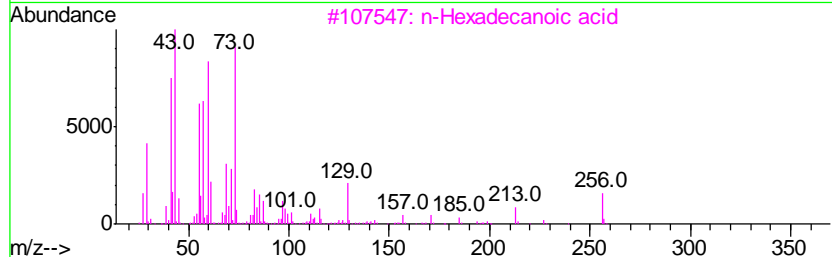
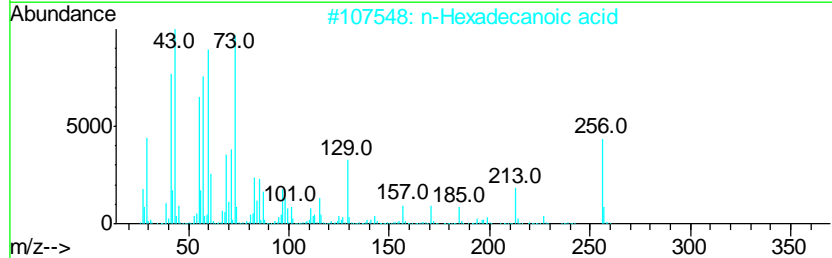
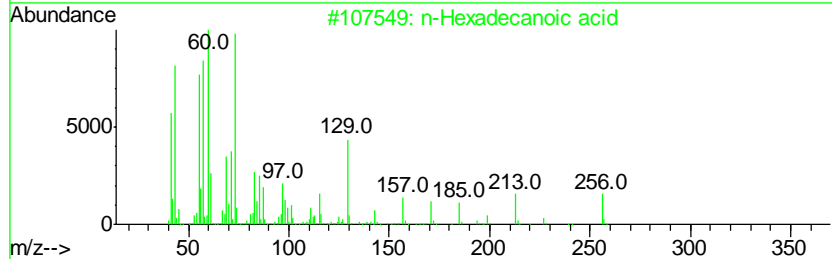
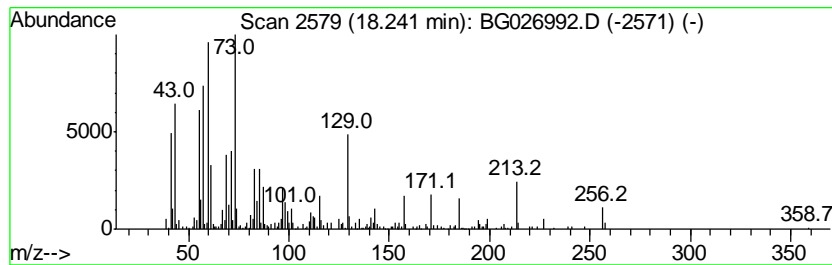
Instrument :
 BNA_G
 ClientSampleId :
 ESXS4

Quant Method : Z:\HPCHEM1\BNA G\METHODS\SOM-EPA-BG042717.M
 Quant Title : SVOA CALIBRATION

TIC Library : C:\DATABASE\NIST11.L
 TIC Integration Parameters: LSCINT.P

 Peak Number 1 n-Hexadecanoic acid Concentration Rank 1

R.T.	EstConc	Area	Relative to ISTD	R.T.		
18.24	4.48 ng/ul	523052	Phenanthrene-d10	17.35		
Hit# of	5	Tentative ID	MW	MolForm	CAS#	Qual
1		n-Hexadecanoic acid	256	C16H32O2	000057-10-3	99
2		n-Hexadecanoic acid	256	C16H32O2	000057-10-3	95
3		n-Hexadecanoic acid	256	C16H32O2	000057-10-3	90
4		Pentadecanoic acid	242	C15H30O2	001002-84-2	87
5		Tridecanoic acid	214	C13H26O2	000638-53-9	83



Data Path : Z:\HPCHEM1\BNA G\DATA\BG051617\
 Data File : BG026992.D
 Acq On : 17 May 2017 00:09
 Operator : SJ/MA
 Sample : I3106-17
 Misc :
 ALS Vial : 13 Sample Multiplier: 1

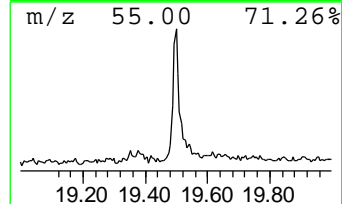
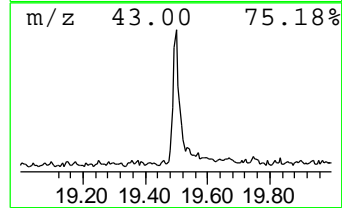
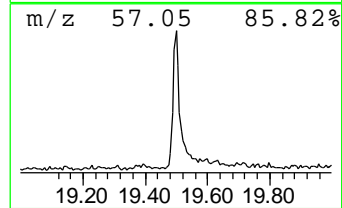
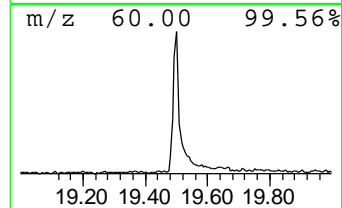
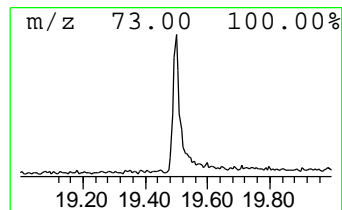
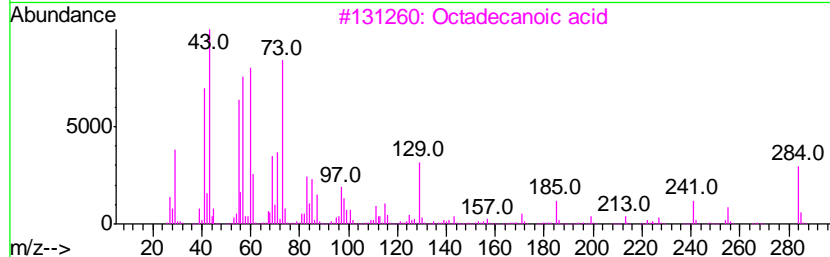
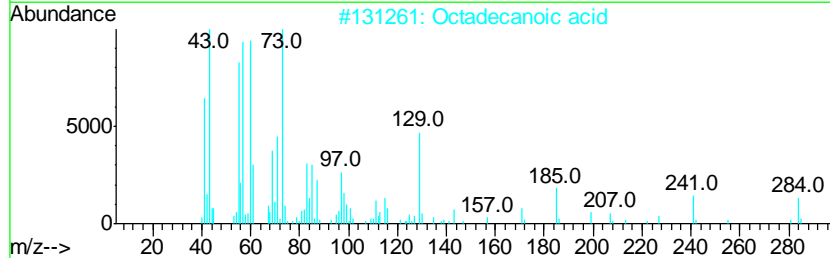
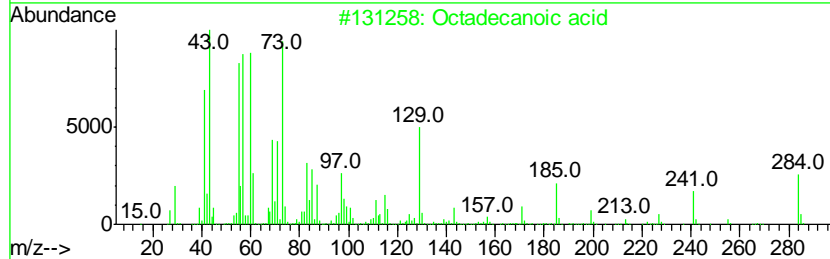
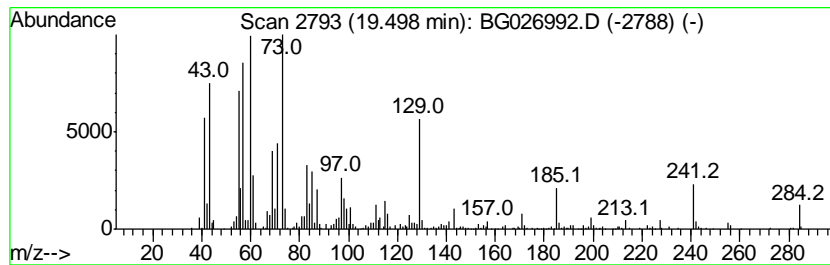
Instrument :
 BNA_G
 ClientSampleID :
 ESXS4

Quant Method : Z:\HPCHEM1\BNA G\METHODS\SOM-EPA-BG042717.M
 Quant Title : SVOA CALIBRATION

TIC Library : C:\DATABASE\NIST11.L
 TIC Integration Parameters: LSCINT.P

 Peak Number 2 Octadecanoic acid Concentration Rank 2

R.T.	EstConc	Area	Relative to ISTD	R.T.
19.50	4.46 ng/ul	532220	Chrysene-d12	21.60
Hit# of	5	Tentative ID	MW MolForm	CAS# Qual
1		Octadecanoic acid	284 C18H36O2	000057-11-4 99
2		Octadecanoic acid	284 C18H36O2	000057-11-4 97
3		Octadecanoic acid	284 C18H36O2	000057-11-4 96
4		Pentadecanoic acid	242 C15H30O2	001002-84-2 92
5		Pentadecanoic acid	242 C15H30O2	001002-84-2 91



Data Path : Z:\HPCHEM1\BNA G\DATA\BG051617\
 Data File : BG026992.D
 Acq On : 17 May 2017 00:09
 Operator : SJ/MA
 Sample : I3106-17
 Misc :
 ALS Vial : 13 Sample Multiplier: 1

Instrument :
 BNA_G
 ClientSampleID :
 ESXS4

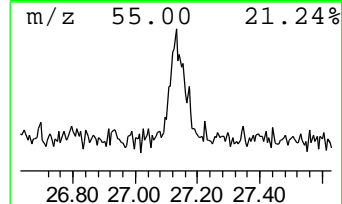
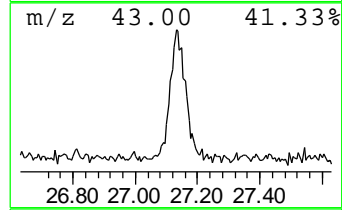
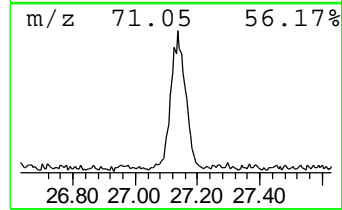
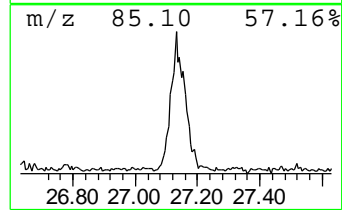
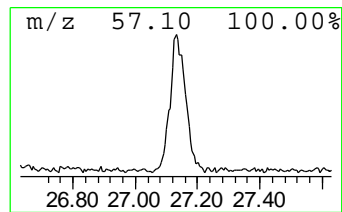
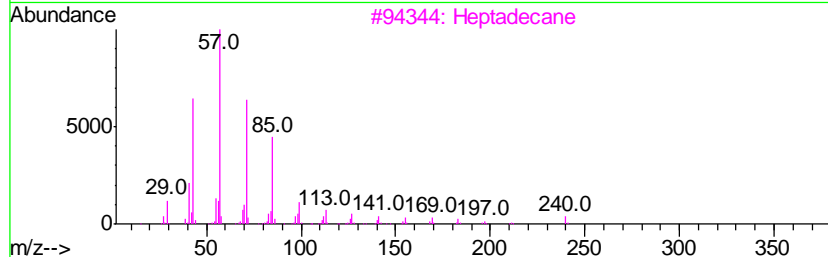
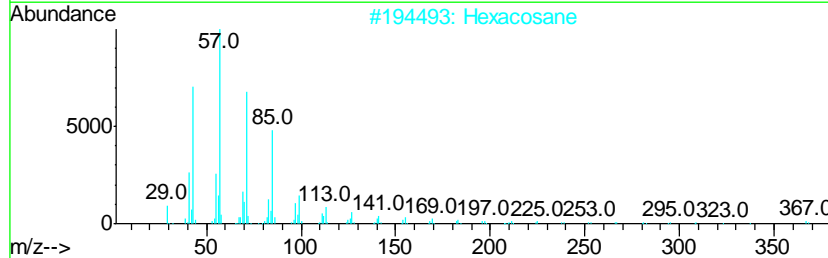
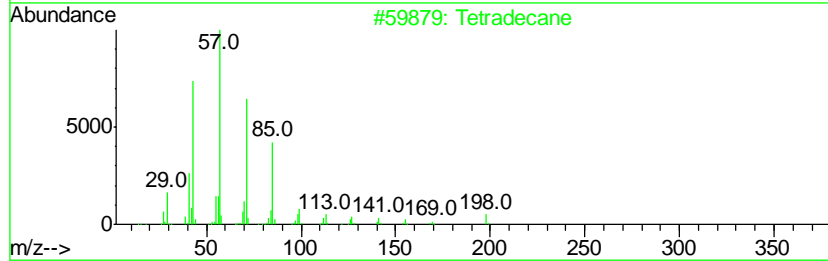
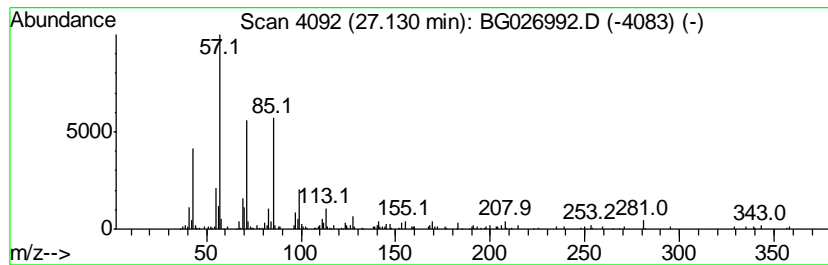
Quant Method : Z:\HPCHEM1\BNA G\METHODS\SOM-EPA-BG042717.M
 Quant Title : SVOA CALIBRATION

TIC Library : C:\DATABASE\NIST11.L
 TIC Integration Parameters: LSCINT.P

 Peak Number 3 (DEL) Alkane: Straight-Chai... Concentration Rank 3

R.T.	EstConc	Area	Relative to ISTD	R.T.
27.13	2.10 ng/ul	290499	Perylene-d12	24.76

Hit#	of	Tentative ID	MW	MolForm	CAS#	Qual
1	5	Tetradecane	198	C14H30	000629-59-4	76
2		Hexacosane	366	C26H54	000630-01-3	74
3		Heptadecane	240	C17H36	000629-78-7	72
4		Tetradecane	198	C14H30	000629-59-4	68
5		Tridecane, 2-methyl-	198	C14H30	001560-96-9	64



Data Path : Z:\HPCHEM1\BNA_G\DATA\BG051617\
Data File : BG026992.D
Acq On : 17 May 2017 00:09
Operator : SJ/MA
Sample : I3106-17
Misc :
ALS Vial : 13 Sample Multiplier: 1

Instrument :
BNA_G
ClientSampleId :
ESXS4

Quant Method : Z:\HPCHEM1\BNA_G\METHODS\SOM-EPA-BG042717.M
Quant Title : SVOA CALIBRATION

TIC Library : C:\DATABASE\NIST11.L
TIC Integration Parameters: LSCINT.P

TIC Top Hit name	RT	EstConc	Units	Response	--Internal Standard--			
					#	RT	Resp	Conc
n-Hexadecanoic acid	18.24	4.5	ng/ul	523052	4	17.35	2334010	20.0
Octadecanoic acid	19.50	4.5	ng/ul	532220	5	21.60	2387570	20.0
(DEL) Alkane: Str...	27.13	2.1	ng/ul	290499	6	24.76	2766840	20.0