

Data Path : Z:\svoasrv\HPCHEM1\BNA_G\Data\BG052022\
 Data File : BG053643.D
 Acq On : 20 May 2022 14:27
 Operator : CG/JU
 Sample : PB144936BL
 Misc :
 ALS Vial : 3 Sample Multiplier: 1

Instrument :
 BNA_G
 ClientSampleId :
 PB144936BL

Integration Parameters: rteint.p
 Integrator: RTE
 Smoothing : ON Filtering: 5
 Sampling : 1 Min Area: 3 % of largest Peak
 Start Thrs: 0.2 Max Peaks: 100
 Stop Thrs : 0 Peak Location: TOP

If leading or trailing edge < 100 prefer < Baseline drop else tangent >
 Peak separation: 5

Method : Z:\svoasrv\HPCHEM1\BNA_G\Methods\8270-BG050522.M
 Title : ASP BNA STANDARDS FOR 5 POINT CALIBRATION

Signal : TIC: BG053643.D\data.ms

peak #	R.T. min	first scan	max scan	last scan	PK TY	peak height	corr. area	corr. % max.	% of total
1	5.637	377	383	395	rBV	504859	850690	29.80%	8.167%
2	7.235	648	655	671	rBV	548087	973827	34.11%	9.350%
3	8.069	790	797	805	rBV	85245	149582	5.24%	1.436%
4	9.232	986	995	1006	rBV	330893	611128	21.41%	5.867%
5	10.877	1267	1275	1288	rBV	120333	225627	7.90%	2.166%
6	13.321	1683	1691	1702	rBV	976216	1538671	53.90%	14.773%
7	14.696	1919	1925	1933	rBV	236185	368878	12.92%	3.542%
8	16.188	2172	2179	2191	rBV	771980	1259215	44.11%	12.090%
9	17.445	2386	2393	2400	rBV	334739	509549	17.85%	4.892%
10	20.047	2829	2836	2843	rVB	2222601	2854546	100.00%	27.406%
11	21.721	3114	3121	3130	rVB2	327429	548506	19.22%	5.266%
12	24.988	3668	3677	3690	rBV3	177269	525378	18.40%	5.044%

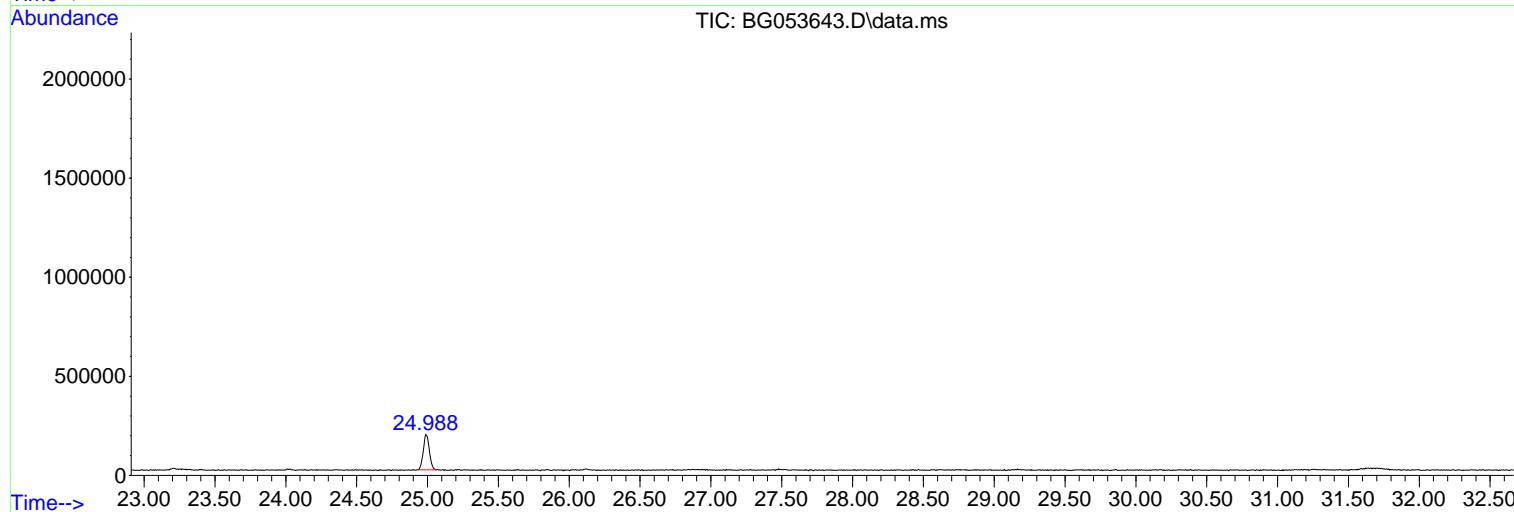
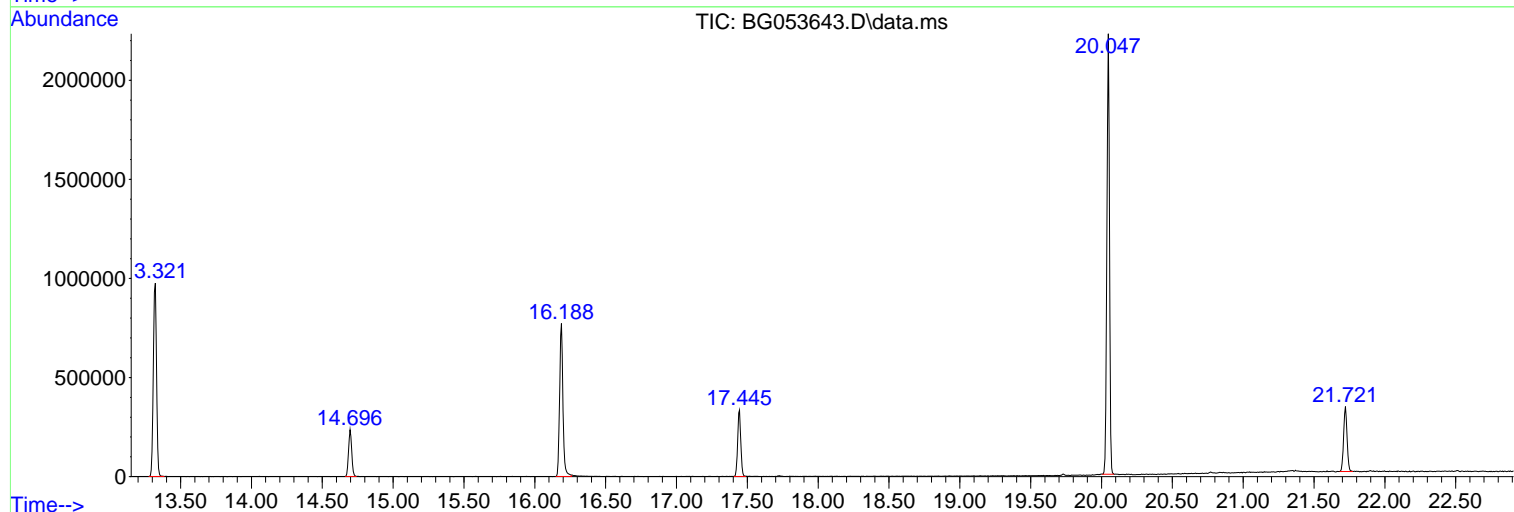
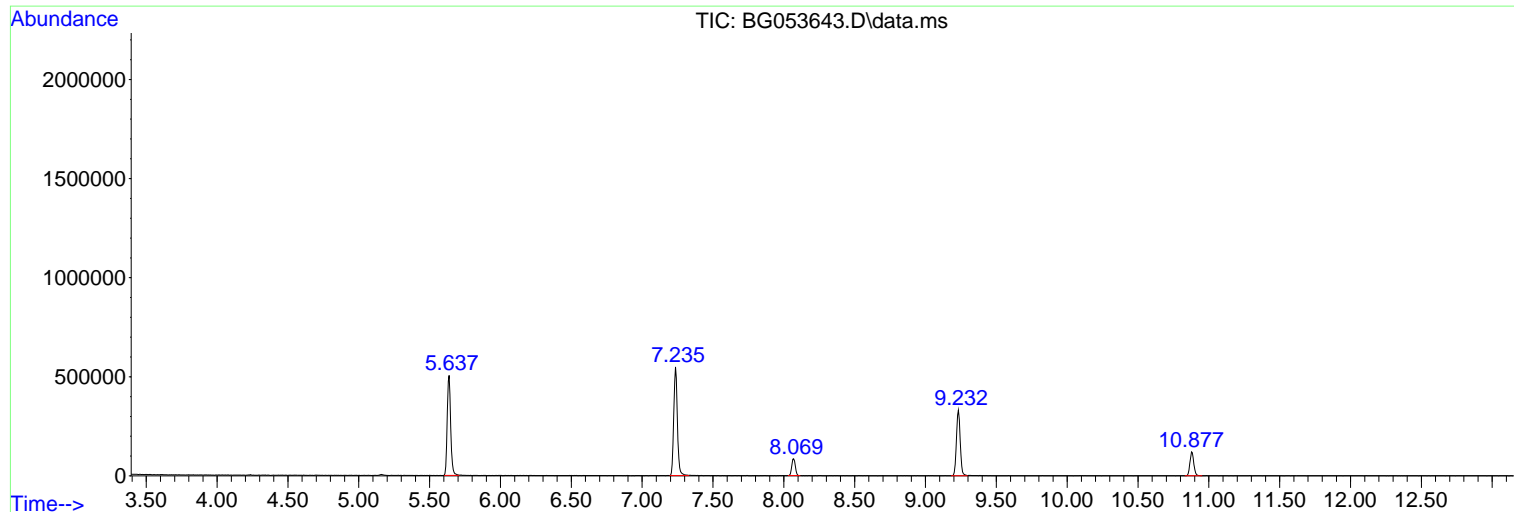
Sum of corrected areas: 10415597

Data Path : Z:\svoasrv\HPCHEM1\BNA_G\Data\BG052022\
Data File : BG053643.D
Acq On : 20 May 2022 14:27
Operator : CG/JU
Sample : PB144936BL
Misc :
ALS Vial : 3 Sample Multiplier: 1

Instrument :
BNA_G
ClientSampleId :
PB144936BL

Quant Method : Z:\svoasrv\HPCHEM1\BNA_G\Methods\8270-BG050522.M
Quant Title : ASP BNA STANDARDS FOR 5 POINT CALIBRATION

TIC Library : C:\Database\NIST20.L
TIC Integration Parameters: LSCINT.P



Library Search Compound Report

Data Path : Z:\svoasrv\HPCHEM1\BNA_G\Data\BG052022\
Data File : BG053643.D
Acq On : 20 May 2022 14:27
Operator : CG/JU
Sample : PB144936BL
Misc :
ALS Vial : 3 Sample Multiplier: 1

Instrument :
BNA_G
ClientSampleId :
PB144936BL

Quant Method : Z:\svoasrv\HPCHEM1\BNA_G\Methods\8270-BG050522.M
Quant Title : ASP BNA STANDARDS FOR 5 POINT CALIBRATION

TIC Library : C:\Database\NIST20.L
TIC Integration Parameters: LSCINT.P

No Library Search Compounds Detected

Data Path : Z:\svoasrv\HPCHEM1\BNA_G\Data\BG052022\
Data File : BG053643.D
Acq On : 20 May 2022 14:27
Operator : CG/JU
Sample : PB144936BL
Misc :
ALS Vial : 3 Sample Multiplier: 1

Instrument :
BNA_G
ClientSampleId :
PB144936BL

Quant Method : Z:\svoasrv\HPCHEM1\BNA_G\Methods\8270-BG050522.M
Quant Title : ASP BNA STANDARDS FOR 5 POINT CALIBRATION

TIC Library : C:\Database\NIST20.L
TIC Integration Parameters: LSCINT.P

TIC Top Hit name	RT	EstConc	Units	Response	#	RT	Resp	Conc
------------------	----	---------	-------	----------	---	----	------	------

-----|