

Data Path : Z:\HPCHEM1\BNA_G\DATA\BG052217\
 Data File : BG027055.D
 Acq On : 22 May 2017 12:59
 Operator : SJ/MA
 Sample : I3211-06
 Misc :
 ALS Vial : 7 Sample Multiplier: 1

Instrument :
 BNA_G
 ClientSampleId :
 EME-BF003-01

Integration Parameters: LSCINT.P

Integrator: RTE
 Smoothing : ON
 Sampling : 1
 Start Thrs: 0.1
 Stop Thrs : 0

Filtering: 5
 Min Area: 0.1 % of largest Peak
 Max Peaks: 100
 Peak Location: TOP

If leading or trailing edge < 100 prefer < Baseline drop else tangent >
 Peak separation: 1

Method : Z:\HPCHEM1\BNA_G\METHODS\SOM-EPA-BG042717.M
 Title : SVOA CALIBRATION

Signal : TIC

| peak # | R.T. min | first scan | max scan | last scan | PK TY | peak height | corr. area | corr. % max. | % of total |
|--------|----------|------------|----------|-----------|-------|-------------|------------|--------------|------------|
| 1 | 3.247 | 24 | 27 | 30 | rVB3 | 5564 | 4987 | 0.13% | 0.010% |
| 2 | 3.429 | 53 | 58 | 67 | rVB | 67581 | 104424 | 2.75% | 0.217% |
| 3 | 3.564 | 79 | 81 | 89 | rVB7 | 2935 | 7090 | 0.19% | 0.015% |
| 4 | 3.823 | 124 | 125 | 130 | rVB4 | 3695 | 4918 | 0.13% | 0.010% |
| 5 | 3.987 | 149 | 153 | 155 | rBV4 | 3220 | 5672 | 0.15% | 0.012% |
| 6 | 4.134 | 175 | 178 | 183 | rBV6 | 3172 | 5471 | 0.14% | 0.011% |
| 7 | 4.275 | 198 | 202 | 207 | rBV6 | 2766 | 5917 | 0.16% | 0.012% |
| 8 | 5.515 | 406 | 413 | 414 | rBV5 | 4458 | 5748 | 0.15% | 0.012% |
| 9 | 6.096 | 503 | 512 | 525 | rBV10 | 4580 | 19444 | 0.51% | 0.040% |
| 10 | 6.214 | 527 | 532 | 543 | rVB5 | 5163 | 13499 | 0.36% | 0.028% |
| 11 | 7.054 | 668 | 675 | 681 | rBV5 | 12548 | 32133 | 0.85% | 0.067% |
| 12 | 7.101 | 681 | 683 | 689 | rVB5 | 3571 | 5374 | 0.14% | 0.011% |
| 13 | 7.189 | 691 | 698 | 715 | rBV | 709609 | 1366758 | 36.03% | 2.843% |
| 14 | 7.330 | 715 | 722 | 735 | rVV | 645542 | 1075826 | 28.36% | 2.238% |
| 15 | 7.424 | 735 | 738 | 744 | rVB6 | 4515 | 8157 | 0.22% | 0.017% |
| 16 | 7.548 | 747 | 759 | 775 | rBV | 759237 | 1376236 | 36.28% | 2.863% |
| 17 | 8.006 | 826 | 837 | 849 | rBV | 595274 | 1036716 | 27.33% | 2.156% |
| 18 | 8.300 | 881 | 887 | 895 | rBV6 | 11193 | 23478 | 0.62% | 0.049% |
| 19 | 8.729 | 951 | 960 | 982 | rBV | 892441 | 1763675 | 46.49% | 3.669% |
| 20 | 9.169 | 1025 | 1035 | 1047 | rBV | 720534 | 1295394 | 34.14% | 2.694% |
| 21 | 9.316 | 1052 | 1060 | 1076 | rBV3 | 26322 | 71863 | 1.89% | 0.149% |
| 22 | 9.575 | 1100 | 1104 | 1112 | rVB3 | 6009 | 9550 | 0.25% | 0.020% |
| 23 | 9.892 | 1150 | 1158 | 1179 | rBV | 591324 | 1096258 | 28.90% | 2.280% |
| 24 | 10.180 | 1202 | 1207 | 1213 | rBV7 | 3819 | 10363 | 0.27% | 0.022% |
| 25 | 10.438 | 1239 | 1251 | 1274 | rBV | 857843 | 1724178 | 45.45% | 3.586% |
| 26 | 10.808 | 1304 | 1314 | 1329 | rVB | 947039 | 1713381 | 45.16% | 3.564% |
| 27 | 10.944 | 1329 | 1337 | 1354 | rBV | 718002 | 1429101 | 37.67% | 2.973% |
| 28 | 11.337 | 1397 | 1404 | 1407 | rVB4 | 3301 | 4995 | 0.13% | 0.010% |
| 29 | 11.637 | 1448 | 1455 | 1465 | rVB8 | 3700 | 11707 | 0.31% | 0.024% |
| 30 | 12.389 | 1576 | 1583 | 1591 | rVB3 | 18861 | 38532 | 1.02% | 0.080% |
| 31 | 12.595 | 1611 | 1618 | 1627 | rBV8 | 3458 | 7884 | 0.21% | 0.016% |
| 32 | 12.924 | 1668 | 1674 | 1680 | rBV6 | 4067 | 7467 | 0.20% | 0.016% |
| 33 | 13.006 | 1685 | 1688 | 1694 | rBV7 | 2686 | 5630 | 0.15% | 0.012% |
| 34 | 13.229 | 1716 | 1726 | 1736 | rBV9 | 9165 | 24652 | 0.65% | 0.051% |

Data Path : Z:\HPCHEM1\BNA_G\DATA\BG052217\
 Data File : BG027055.D
 Acq On : 22 May 2017 12:59
 Operator : SJ/MA
 Sample : I3211-06
 Misc :
 ALS Vial : 7 Sample Multiplier: 1

Instrument :
 BNA_G
 ClientSampleId :
 EME-BF003-01

Integration Parameters: LSCINT.P

Integrator: RTE
 Smoothing : ON
 Sampling : 1
 Start Thrs: 0.1
 Stop Thrs : 0

Filtering: 5
 Min Area: 0.1 % of largest Peak
 Max Peaks: 100
 Peak Location: TOP

If leading or trailing edge < 100 prefer < Baseline drop else tangent >
 Peak separation: 1

Method : Z:\HPCHEM1\BNA_G\METHODS\SOM-EPA-BG042717.M
 Title : SVOA CALIBRATION

| | | | | | | | | | |
|----|--------|------|------|------|-------|---------|---------|--------|--------|
| 35 | 13.329 | 1736 | 1743 | 1757 | rVV9 | 7738 | 28777 | 0.76% | 0.060% |
| 36 | 13.441 | 1757 | 1762 | 1767 | rVB4 | 5085 | 9881 | 0.26% | 0.021% |
| 37 | 13.505 | 1767 | 1773 | 1781 | rBV8 | 2818 | 8074 | 0.21% | 0.017% |
| 38 | 13.599 | 1787 | 1789 | 1795 | rVB5 | 4358 | 7073 | 0.19% | 0.015% |
| 39 | 13.817 | 1819 | 1826 | 1831 | rBV6 | 3530 | 5605 | 0.15% | 0.012% |
| 40 | 14.022 | 1852 | 1861 | 1865 | rBV | 1542392 | 2364757 | 62.33% | 4.919% |
| 41 | 14.063 | 1865 | 1868 | 1885 | rVB | 695121 | 999953 | 26.36% | 2.080% |
| 42 | 14.316 | 1901 | 1911 | 1933 | rBV | 1972094 | 3153228 | 83.11% | 6.559% |
| 43 | 14.504 | 1938 | 1943 | 1948 | rVB2 | 21574 | 32164 | 0.85% | 0.067% |
| 44 | 14.622 | 1951 | 1963 | 1976 | rBV2 | 1279812 | 2108783 | 55.58% | 4.386% |
| 45 | 14.851 | 1995 | 2002 | 2025 | rBV | 336874 | 900068 | 23.72% | 1.872% |
| 46 | 15.115 | 2043 | 2047 | 2053 | rVB7 | 7906 | 11804 | 0.31% | 0.025% |
| 47 | 15.192 | 2054 | 2060 | 2066 | rBV8 | 12796 | 27363 | 0.72% | 0.057% |
| 48 | 15.403 | 2093 | 2096 | 2099 | rBV3 | 7041 | 10188 | 0.27% | 0.021% |
| 49 | 15.450 | 2099 | 2104 | 2110 | rVB2 | 49354 | 69702 | 1.84% | 0.145% |
| 50 | 15.503 | 2110 | 2113 | 2119 | rBV7 | 4593 | 10626 | 0.28% | 0.022% |
| 51 | 15.609 | 2120 | 2131 | 2144 | rBV | 2375836 | 3599720 | 94.88% | 7.488% |
| 52 | 15.738 | 2148 | 2153 | 2166 | rBV | 483404 | 777340 | 20.49% | 1.617% |
| 53 | 15.844 | 2166 | 2171 | 2178 | rVV5 | 44650 | 84921 | 2.24% | 0.177% |
| 54 | 15.891 | 2178 | 2179 | 2185 | rVB5 | 7624 | 9937 | 0.26% | 0.021% |
| 55 | 15.950 | 2185 | 2189 | 2194 | rBV7 | 9691 | 15735 | 0.41% | 0.033% |
| 56 | 16.002 | 2194 | 2198 | 2204 | rVV8 | 9991 | 15299 | 0.40% | 0.032% |
| 57 | 16.067 | 2204 | 2209 | 2212 | rVB4 | 10030 | 14631 | 0.39% | 0.030% |
| 58 | 16.190 | 2224 | 2230 | 2233 | rVB8 | 3786 | 6280 | 0.17% | 0.013% |
| 59 | 16.308 | 2244 | 2250 | 2258 | rBV | 68209 | 109784 | 2.89% | 0.228% |
| 60 | 16.431 | 2268 | 2271 | 2275 | rBV6 | 3754 | 4765 | 0.13% | 0.010% |
| 61 | 16.478 | 2276 | 2279 | 2283 | rVB5 | 5336 | 8549 | 0.23% | 0.018% |
| 62 | 16.561 | 2289 | 2293 | 2301 | rVB10 | 5266 | 13021 | 0.34% | 0.027% |
| 63 | 16.655 | 2301 | 2309 | 2311 | rBV6 | 14316 | 23688 | 0.62% | 0.049% |
| 64 | 16.707 | 2316 | 2318 | 2322 | rVB5 | 6321 | 7707 | 0.20% | 0.016% |
| 65 | 16.760 | 2323 | 2327 | 2333 | rVV7 | 10569 | 15395 | 0.41% | 0.032% |
| 66 | 16.813 | 2333 | 2336 | 2342 | rVB6 | 9888 | 13238 | 0.35% | 0.028% |
| 67 | 16.884 | 2344 | 2348 | 2352 | rBV7 | 4698 | 8975 | 0.24% | 0.019% |
| 68 | 17.095 | 2379 | 2384 | 2389 | rBV | 54892 | 69758 | 1.84% | 0.145% |
| 69 | 17.148 | 2389 | 2393 | 2400 | rVB7 | 17413 | 28879 | 0.76% | 0.060% |
| 70 | 17.260 | 2406 | 2412 | 2417 | rVB9 | 6299 | 10635 | 0.28% | 0.022% |
| 71 | 17.354 | 2420 | 2428 | 2436 | rBV2 | 1368521 | 2165109 | 57.07% | 4.504% |

Data Path : Z:\HPCHEM1\BNA_G\DATA\BG052217\
 Data File : BG027055.D
 Acq On : 22 May 2017 12:59
 Operator : SJ/MA
 Sample : I3211-06
 Misc :
 ALS Vial : 7 Sample Multiplier: 1

Instrument :
 BNA_G
 ClientSampleId :
 EME-BF003-01

Integration Parameters: LSCINT.P

Integrator: RTE
 Smoothing : ON
 Sampling : 1
 Start Thrs: 0.1
 Stop Thrs : 0

Filtering: 5
 Min Area: 0.1 % of largest Peak
 Max Peaks: 100
 Peak Location: TOP

If leading or trailing edge < 100 prefer < Baseline drop else tangent >
 Peak separation: 1

Method : Z:\HPCHEM1\BNA_G\METHODS\SOM-EPA-BG042717.M
 Title : SVOA CALIBRATION

| | | | | | | | | | |
|-----|--------|------|------|------|------|---------|---------|---------|--------|
| 72 | 17.454 | 2438 | 2445 | 2460 | rVB2 | 2332461 | 3636644 | 95.86% | 7.564% |
| 73 | 17.630 | 2469 | 2475 | 2479 | rVB7 | 7306 | 11920 | 0.31% | 0.025% |
| 74 | 17.700 | 2485 | 2487 | 2490 | rBV3 | 4428 | 4731 | 0.12% | 0.010% |
| 75 | 17.747 | 2491 | 2495 | 2497 | rBV5 | 5338 | 5965 | 0.16% | 0.012% |
| 76 | 17.836 | 2501 | 2510 | 2515 | rBV | 24353 | 36477 | 0.96% | 0.076% |
| 77 | 18.006 | 2531 | 2539 | 2543 | rVB3 | 34715 | 49785 | 1.31% | 0.104% |
| 78 | 18.100 | 2552 | 2555 | 2557 | rBV4 | 5443 | 5854 | 0.15% | 0.012% |
| 79 | 18.229 | 2571 | 2577 | 2586 | rBV | 147556 | 259064 | 6.83% | 0.539% |
| 80 | 18.517 | 2622 | 2626 | 2633 | rBV9 | 11579 | 21924 | 0.58% | 0.046% |
| 81 | 18.652 | 2644 | 2649 | 2653 | rBV8 | 15085 | 18019 | 0.47% | 0.037% |
| 82 | 18.899 | 2685 | 2691 | 2693 | rVB8 | 6656 | 11950 | 0.31% | 0.025% |
| 83 | 18.952 | 2697 | 2700 | 2703 | rBV5 | 6853 | 7258 | 0.19% | 0.015% |
| 84 | 19.040 | 2713 | 2715 | 2717 | rVB2 | 5792 | 5059 | 0.13% | 0.011% |
| 85 | 19.146 | 2726 | 2733 | 2738 | rBV2 | 10478 | 24486 | 0.65% | 0.051% |
| 86 | 19.199 | 2739 | 2742 | 2745 | rVB5 | 5783 | 7508 | 0.20% | 0.016% |
| 87 | 19.304 | 2757 | 2760 | 2766 | rVB8 | 7321 | 13699 | 0.36% | 0.028% |
| 88 | 19.375 | 2767 | 2772 | 2779 | rBV3 | 32966 | 62612 | 1.65% | 0.130% |
| 89 | 19.498 | 2789 | 2793 | 2801 | rBV8 | 38556 | 77190 | 2.03% | 0.161% |
| 90 | 19.628 | 2811 | 2815 | 2823 | rVB2 | 34428 | 59355 | 1.56% | 0.123% |
| 91 | 19.739 | 2826 | 2834 | 2845 | rBV | 2499644 | 3793860 | 100.00% | 7.891% |
| 92 | 20.256 | 2918 | 2922 | 2925 | rBV6 | 9821 | 17194 | 0.45% | 0.036% |
| 93 | 21.608 | 3144 | 3152 | 3164 | rVB | 1279069 | 2215128 | 58.39% | 4.608% |
| 94 | 23.024 | 3386 | 3393 | 3408 | rVB2 | 283869 | 632763 | 16.68% | 1.316% |
| 95 | 23.217 | 3424 | 3426 | 3437 | rVB6 | 29756 | 56630 | 1.49% | 0.118% |
| 96 | 23.823 | 3523 | 3529 | 3534 | rBV2 | 58661 | 112634 | 2.97% | 0.234% |
| 97 | 24.563 | 3645 | 3655 | 3678 | rBV2 | 1021547 | 3430395 | 90.42% | 7.135% |
| 98 | 24.774 | 3680 | 3691 | 3715 | rVB2 | 563931 | 2032623 | 53.58% | 4.228% |
| 99 | 25.844 | 3865 | 3873 | 3881 | rVB3 | 66306 | 185305 | 4.88% | 0.385% |
| 100 | 27.148 | 4091 | 4095 | 4108 | rVB7 | 65403 | 211612 | 5.58% | 0.440% |

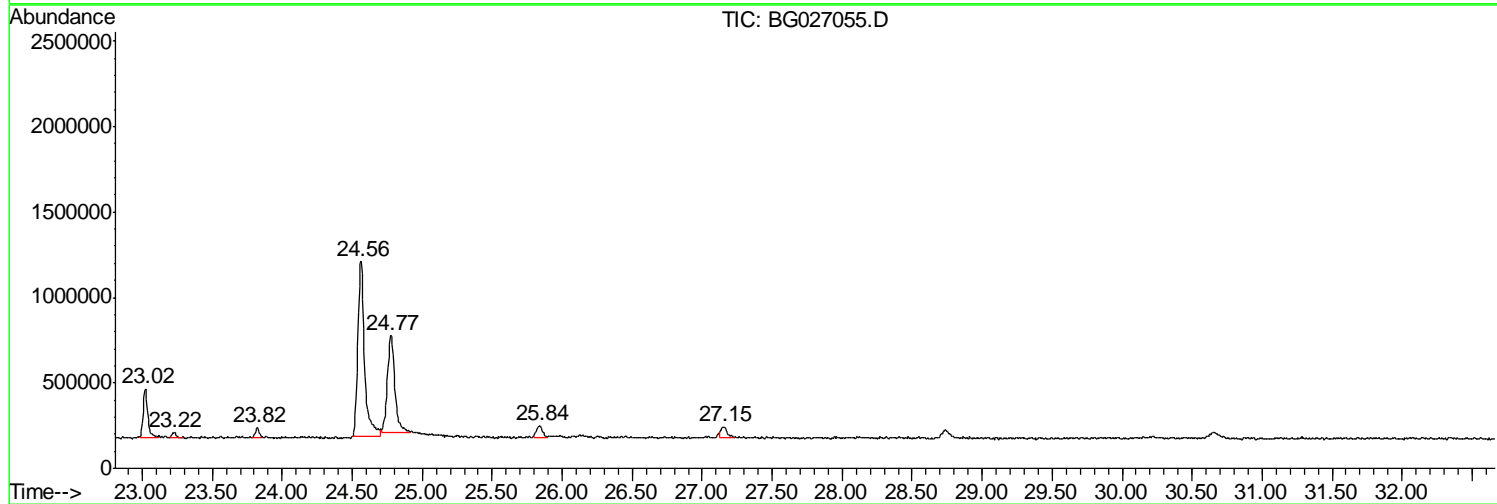
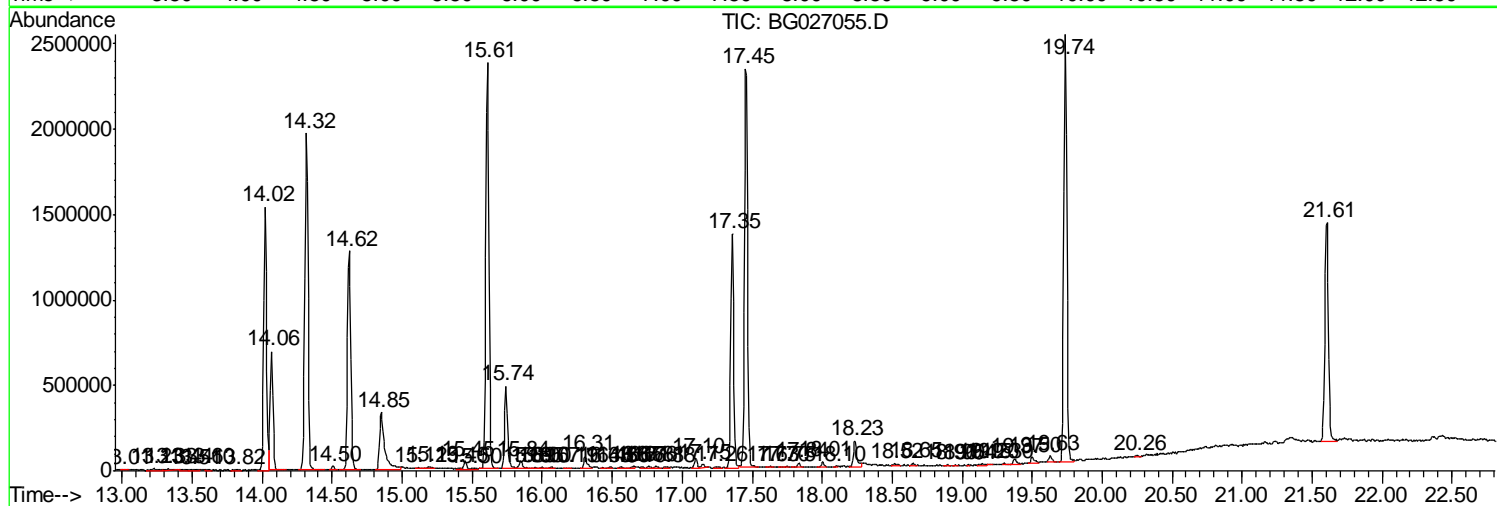
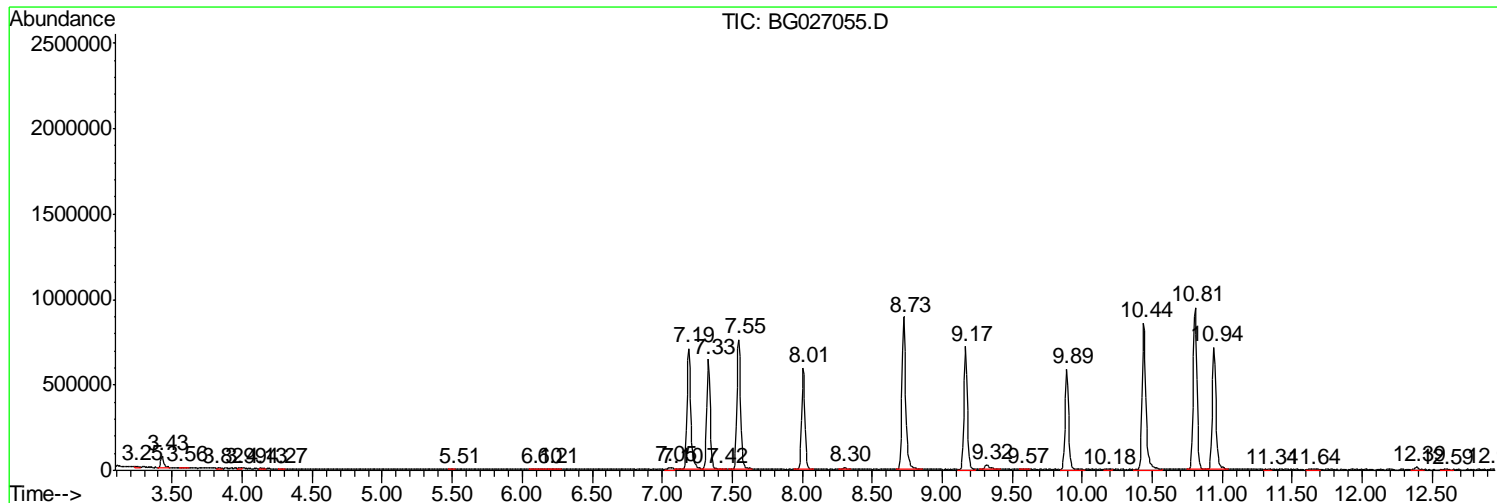
Sum of corrected areas: 48075534

Data Path : Z:\HPCHEM1\BNA_G\DATA\BG052217\
 Data File : BG027055.D
 Acq On : 22 May 2017 12:59
 Operator : SJ/MA
 Sample : I3211-06
 Misc :
 ALS Vial : 7 Sample Multiplier: 1

Instrument :
 BNA_G
 ClientSampleId :
 EME-BF003-01

Quant Method : Z:\HPCHEM1\BNA_G\METHODS\SOM-EPA-BG042717.M
 Quant Title : SVOA CALIBRATION

TIC Library : C:\DATABASE\NIST11.L
 TIC Integration Parameters: LSCINT.P



Data Path : Z:\HPCHEM1\BNA_G\DATA\BG052217\
 Data File : BG027055.D
 Acq On : 22 May 2017 12:59
 Operator : SJ/MA
 Sample : I3211-06
 Misc :
 ALS Vial : 7 Sample Multiplier: 1

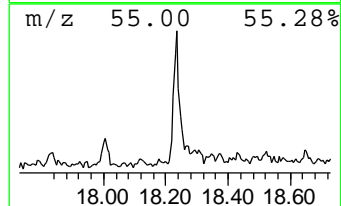
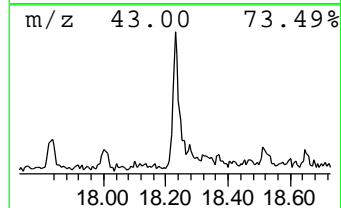
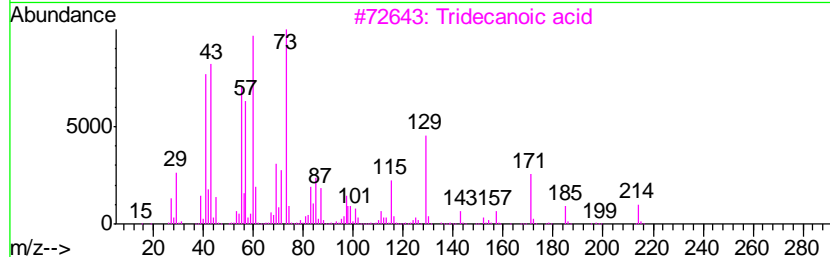
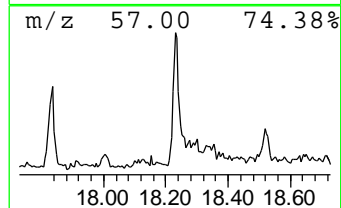
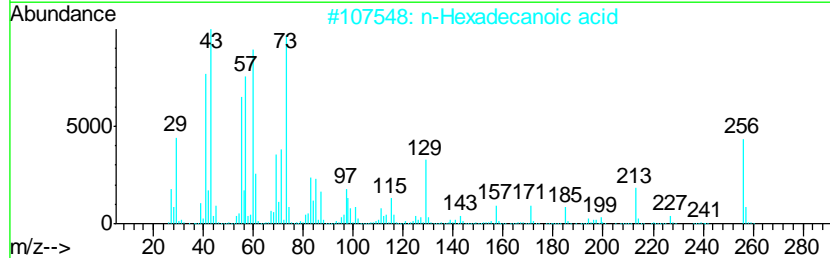
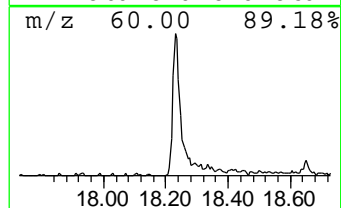
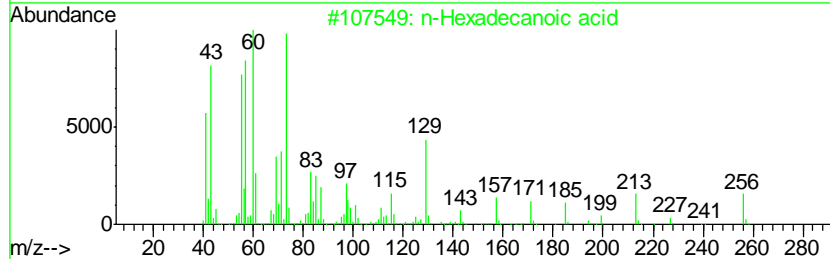
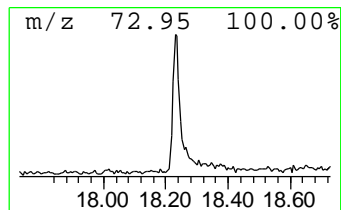
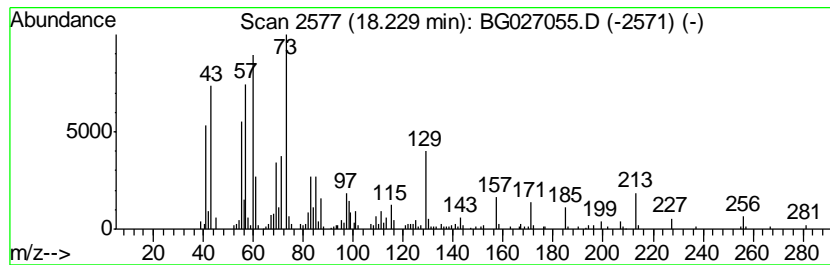
Instrument :
 BNA_G
 ClientSampleID :
 EME-BF003-01

Quant Method : Z:\HPCHEM1\BNA_G\METHODS\SOM-EPA-BG042717.M
 Quant Title : SVOA CALIBRATION

TIC Library : C:\DATABASE\NIST11.L
 TIC Integration Parameters: LSCINT.P

 Peak Number 1 n-Hexadecanoic acid Concentration Rank 2

| R.T. | EstConc | Area | Relative to ISTD | R.T. | | |
|---------|------------|---------------------|------------------|----------|-------------|------|
| 18.23 | 2.39 ng/ul | 259064 | Phenanthrene-d10 | 17.35 | | |
| Hit# of | 5 | Tentative ID | MW | MolForm | CAS# | Qual |
| 1 | | n-Hexadecanoic acid | 256 | C16H32O2 | 000057-10-3 | 99 |
| 2 | | n-Hexadecanoic acid | 256 | C16H32O2 | 000057-10-3 | 98 |
| 3 | | Tridecanoic acid | 214 | C13H26O2 | 000638-53-9 | 81 |
| 4 | | n-Hexadecanoic acid | 256 | C16H32O2 | 000057-10-3 | 72 |
| 5 | | Tridecanoic acid | 214 | C13H26O2 | 000638-53-9 | 72 |



Data Path : Z:\HPCHEM1\BNA_G\DATA\BG052217\
 Data File : BG027055.D
 Acq On : 22 May 2017 12:59
 Operator : SJ/MA
 Sample : I3211-06
 Misc :
 ALS Vial : 7 Sample Multiplier: 1

Instrument :
 BNA_G
 ClientSampleId :
 EME-BF003-01

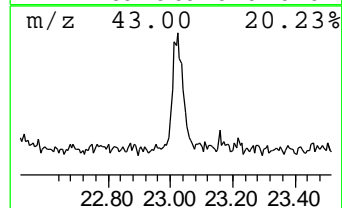
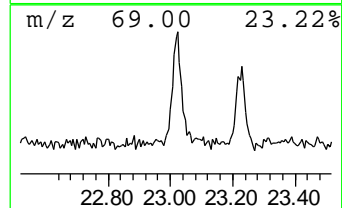
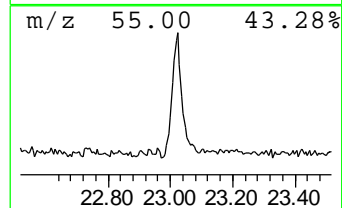
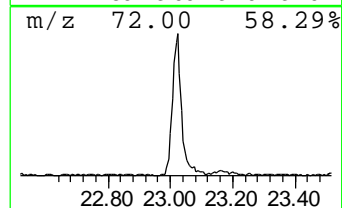
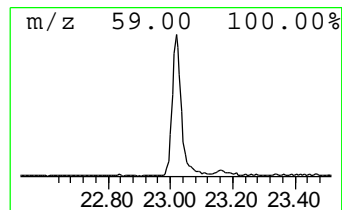
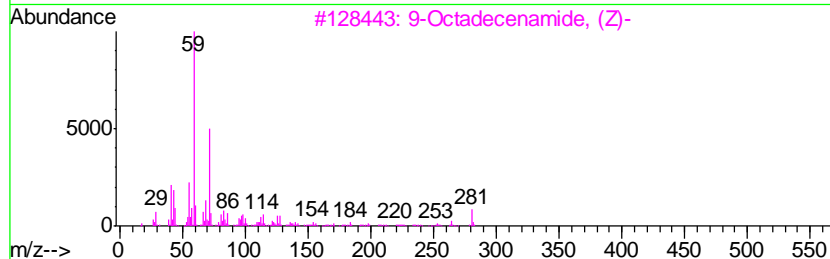
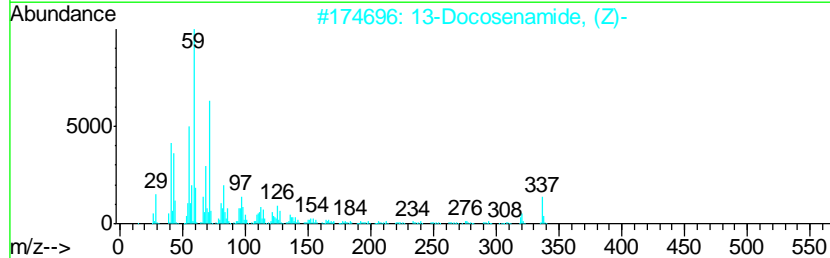
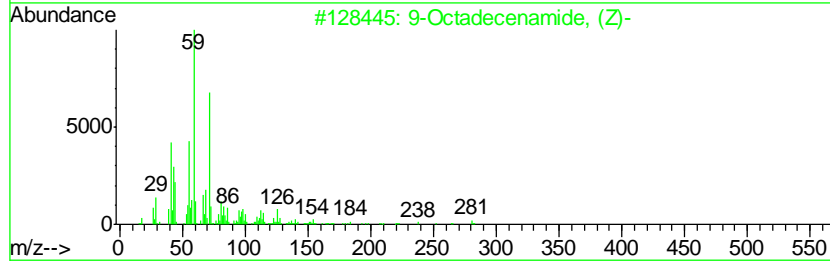
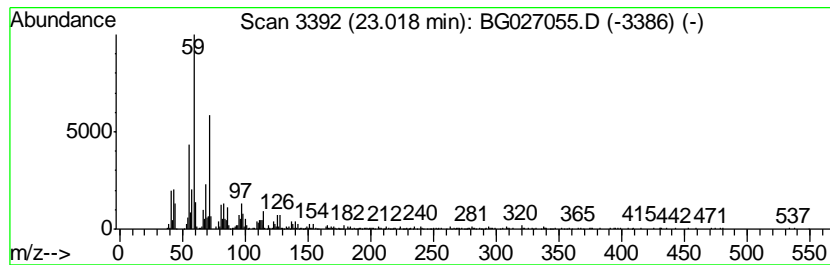
Quant Method : Z:\HPCHEM1\BNA_G\METHODS\SOM-EPA-BG042717.M
 Quant Title : SVOA CALIBRATION

TIC Library : C:\DATABASE\NIST11.L
 TIC Integration Parameters: LSCINT.P

 Peak Number 2 9-Octadecenamide, (Z)- Concentration Rank 1

| R.T. | EstConc | Area | Relative to ISTD | R.T. |
|-------|------------|--------|------------------|-------|
| 23.02 | 5.71 ng/ul | 632763 | Chrysene-d12 | 21.61 |

| Hit# | of | Tentative ID | MW | MolForm | CAS# | Qual |
|------|----|------------------------|-----|----------|-------------|------|
| 1 | 5 | 9-Octadecenamide, (Z)- | 281 | C18H35NO | 000301-02-0 | 94 |
| 2 | | 13-Docosenamide, (Z)- | 337 | C22H43NO | 000112-84-5 | 81 |
| 3 | | 9-Octadecenamide, (Z)- | 281 | C18H35NO | 000301-02-0 | 78 |
| 4 | | 9-Octadecenamide, (Z)- | 281 | C18H35NO | 000301-02-0 | 76 |
| 5 | | 9-Octadecenamide, (Z)- | 281 | C18H35NO | 000301-02-0 | 62 |



Data Path : Z:\HPCHEM1\BNA_G\DATA\BG052217\
 Data File : BG027055.D
 Acq On : 22 May 2017 12:59
 Operator : SJ/MA
 Sample : I3211-06
 Misc :
 ALS Vial : 7 Sample Multiplier: 1

Instrument :
 BNA_G
 ClientSampleId :
 EME-BF003-01

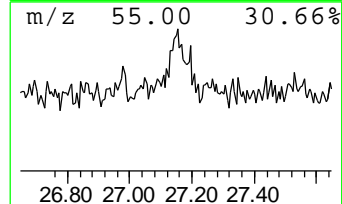
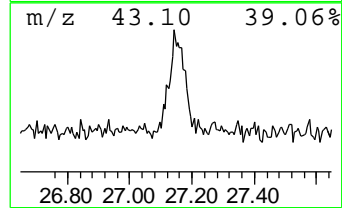
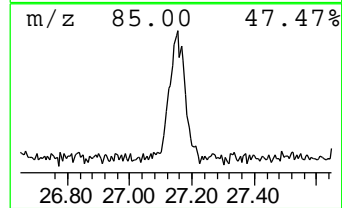
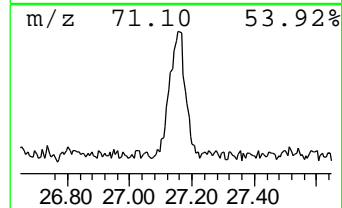
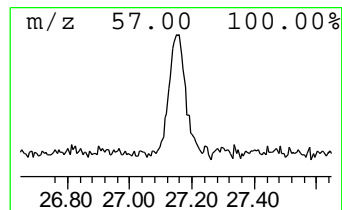
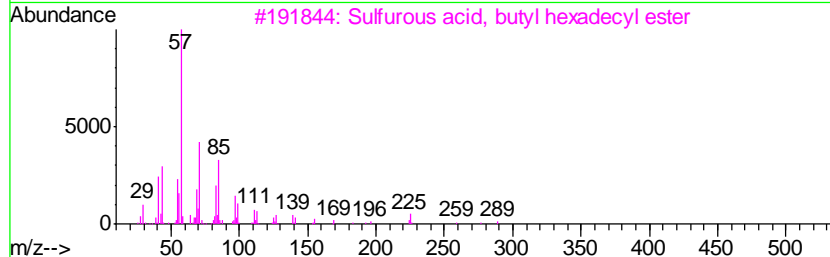
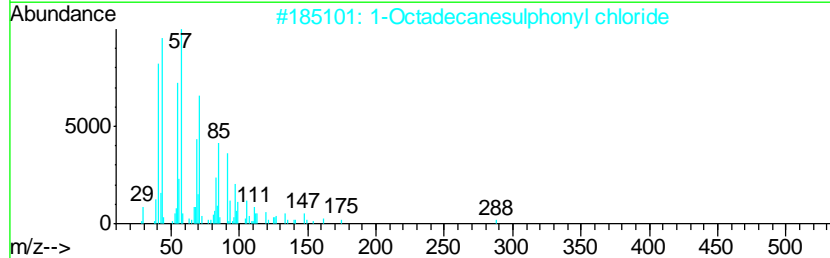
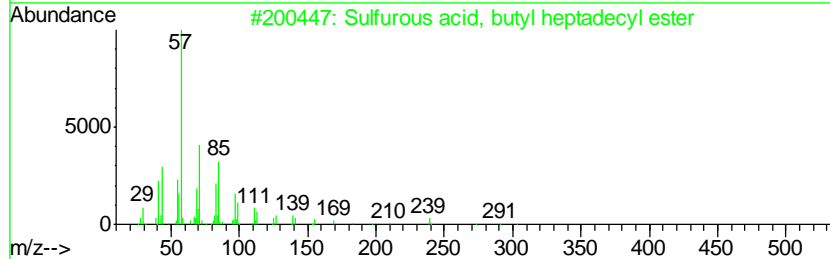
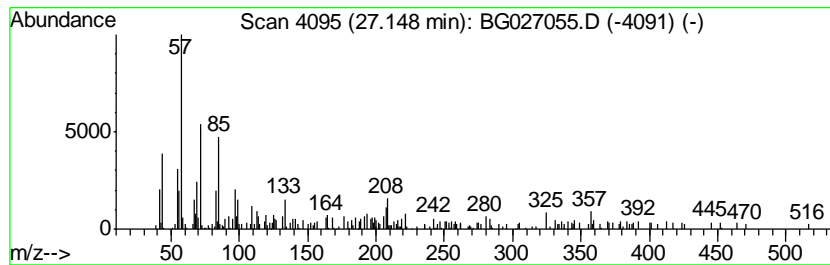
Quant Method : Z:\HPCHEM1\BNA_G\METHODS\SOM-EPA-BG042717.M
 Quant Title : SVOA CALIBRATION

TIC Library : C:\DATABASE\NIST11.L
 TIC Integration Parameters: LSCINT.P

 Peak Number 3 unknown-01 Concentration Rank 3

| R.T. | EstConc | Area | Relative to ISTD | R.T. |
|-------|------------|--------|------------------|-------|
| 27.15 | 2.08 ng/ul | 211612 | Perylene-d12 | 24.78 |

| Hit# | of | Tentative ID | MW | MolForm | CAS# | Qual |
|------|----|-------------------------------------|-----|-------------|--------------|------|
| 1 | 5 | Sulfurous acid, butyl heptadecyl... | 376 | C21H44O3S | 1000309-18-4 | 46 |
| 2 | | 1-Octadecanesulphonyl chloride | 352 | C18H37ClO2S | 1000342-70-4 | 46 |
| 3 | | Sulfurous acid, butyl hexadecyl ... | 362 | C20H42O3S | 1000309-18-3 | 46 |
| 4 | | 1-Heptadecanamine | 255 | C17H37N | 004200-95-7 | 46 |
| 5 | | Ethanol, 2-(dodecyloxy)- | 230 | C14H30O2 | 004536-30-5 | 43 |



Data Path : Z:\HPCHEM1\BNA_G\DATA\BG052217\
Data File : BG027055.D
Acq On : 22 May 2017 12:59
Operator : SJ/MA
Sample : I3211-06
Misc :
ALS Vial : 7 Sample Multiplier: 1

Instrument :
BNA_G
ClientSampleId :
EME-BF003-01

Quant Method : Z:\HPCHEM1\BNA_G\METHODS\SOM-EPA-BG042717.M
Quant Title : SVOA CALIBRATION

TIC Library : C:\DATABASE\NIST11.L
TIC Integration Parameters: LSCINT.P

| TIC Top Hit name | RT | EstConc | Units | Response | --Internal Standard-- | | | |
|----------------------|-------|---------|-------|----------|-----------------------|-------|---------|------|
| | | | | | # | RT | Resp | Conc |
| n-Hexadecanoic acid | 18.23 | 2.4 | ng/ul | 259064 | 4 | 17.35 | 2165110 | 20.0 |
| 9-Octadecenamide,... | 23.02 | 5.7 | ng/ul | 632763 | 5 | 21.61 | 2215130 | 20.0 |
| unknown-01 | 27.15 | 2.1 | ng/ul | 211612 | 6 | 24.78 | 2032620 | 20.0 |