

Data Path : Z:\svoasrv\HPCHEM1\BNA_G\Data\BG052423\
 Data File : BG057538.D
 Acq On : 24 May 2023 17:29
 Operator : CG/JU
 Sample : 02869-11
 Misc :
 ALS Vial : 4 Sample Multiplier: 1

Instrument :
 BNA_G
 ClientSampleId :
 TP19

Quant Time: May 25 02:25:01 2023
 Quant Method : Z:\svoasrv\HPCHEM1\BNA_G\Methods\8270-BG042723.M
 Quant Title : ASP BNA STANDARDS FOR 5 POINT CALIBRATION
 QLast Update : Thu May 25 02:19:01 2023
 Response via : Initial Calibration

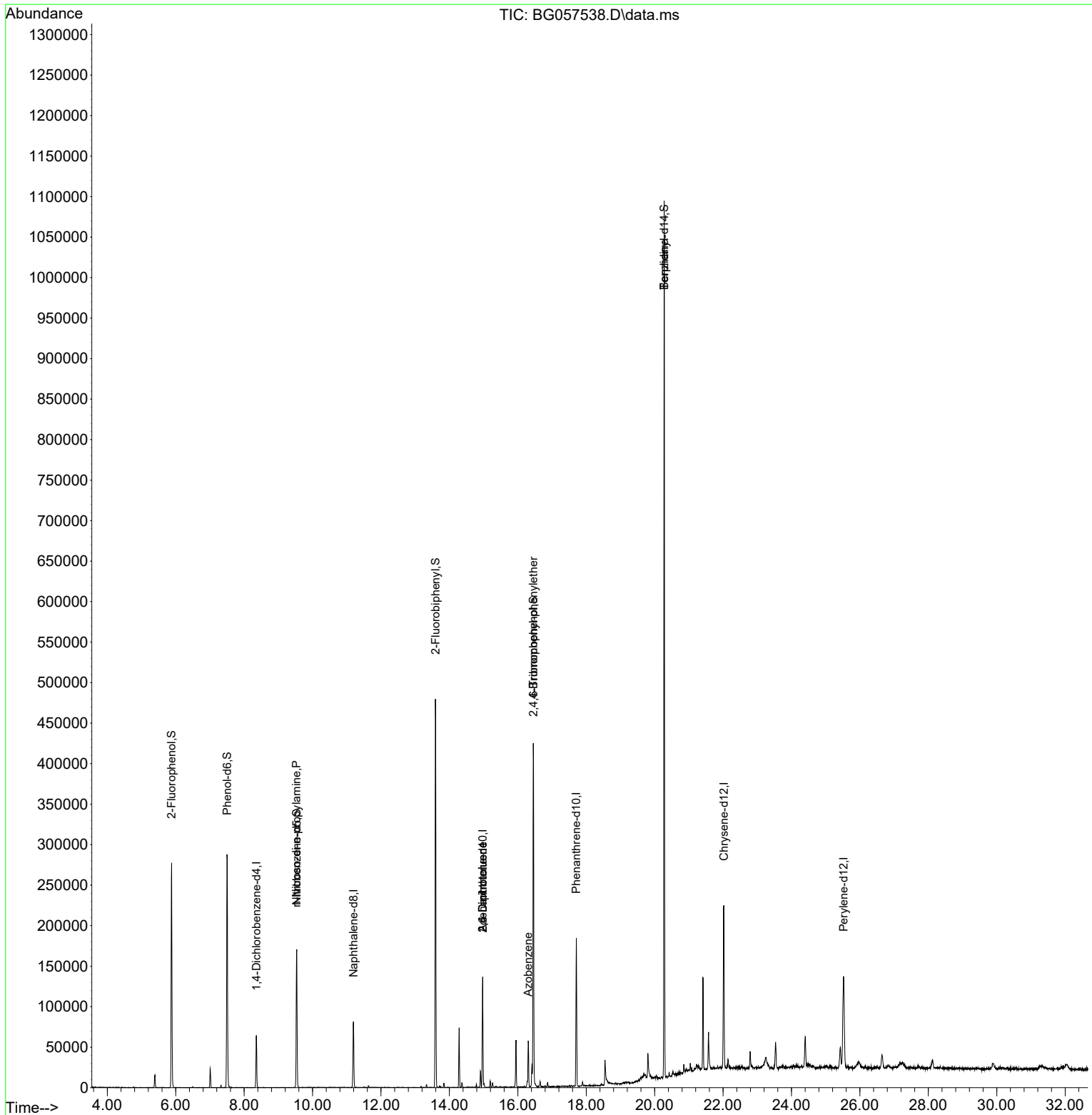
Compound	R.T.	QIon	Response	Conc	Units	Dev(Min)
Internal Standards						
1) 1,4-Dichlorobenzene-d4	8.358	152	19465	20.000	ng	0.00
21) Naphthalene-d8	11.195	136	72943	20.000	ng	0.00
39) Acenaphthene-d10	14.972	164	49262	20.000	ng	0.00
64) Phenanthrene-d10	17.710	188	123657	20.000	ng	-0.01
76) Chrysene-d12	22.021	240	132393	20.000	ng	-0.01
86) Perylene-d12	25.523	264	139706	20.000	ng	-0.02
System Monitoring Compounds						
5) 2-Fluorophenol	5.879	112	126142	110.855	ng	0.00
7) Phenol-d6	7.506	99	182246	105.470	ng	0.00
23) Nitrobenzene-d5	9.538	82	111441	64.122	ng	0.00
42) 2,4,6-Tribromophenol	16.458	330	91050	130.262	ng	0.00
45) 2-Fluorobiphenyl	13.592	172	258489	70.670	ng	-0.01
79) Terphenyl-d14	20.277	244	557374	68.704	ng	-0.01
Target Compounds						
9) Benzaldehyde	7.500	77	379	Below Cal	#	4
19) n-Nitroso-di-n-propyla...	9.532	70	15423	11.706	ng	# 79
51) 2,6-Dinitrotoluene	14.972	165	6694	8.099	ng	# 17
57) 2,4-Dinitrotoluene	14.972	165	6694	5.667	ng	# 20
63) Azobenzene	16.306	77	17748	4.474	ng	# 1
67) 4-Bromophenyl-phenylether	16.453	248	6225	4.124	ng	# 1
77) Benzidine	20.277	184	8052	2.720	ng	# 90

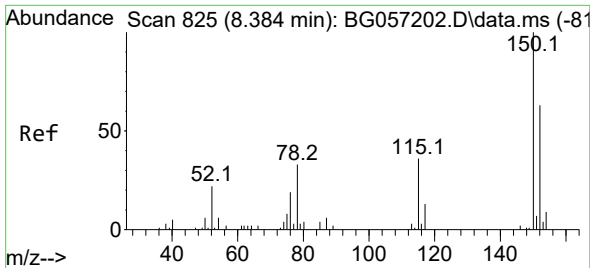
(#) = qualifier out of range (m) = manual integration (+) = signals summed

Data Path : Z:\svoasrv\HPCHEM1\BNA_G\Data\BG052423\
 Data File : BG057538.D
 Acq On : 24 May 2023 17:29
 Operator : CG/JU
 Sample : 02869-11
 Misc :
 ALS Vial : 4 Sample Multiplier: 1

Instrument :
 BNA_G
 ClientSampleId :
 TP19

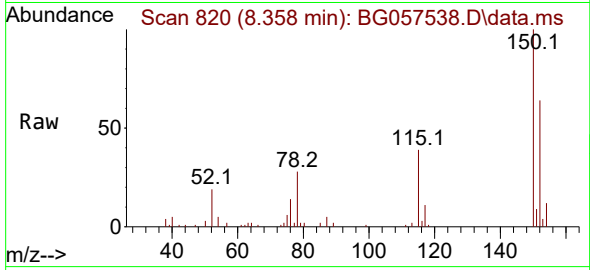
Quant Time: May 25 02:25:01 2023
 Quant Method : Z:\svoasrv\HPCHEM1\BNA_G\Methods\8270-BG042723.M
 Quant Title : ASP BNA STANDARDS FOR 5 POINT CALIBRATION
 QLast Update : Thu May 25 02:19:01 2023
 Response via : Initial Calibration



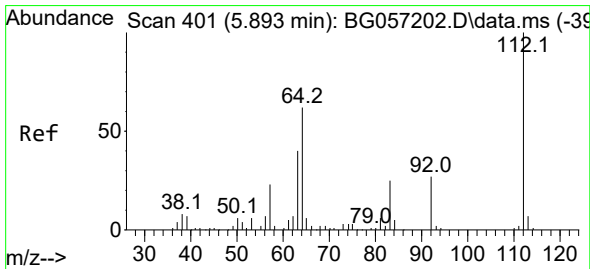
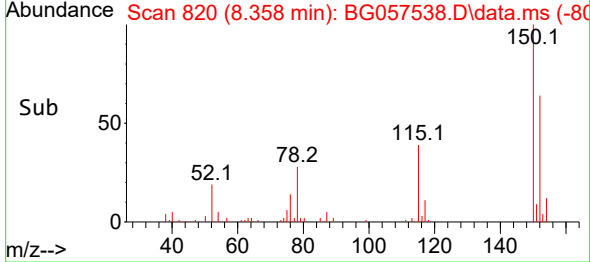
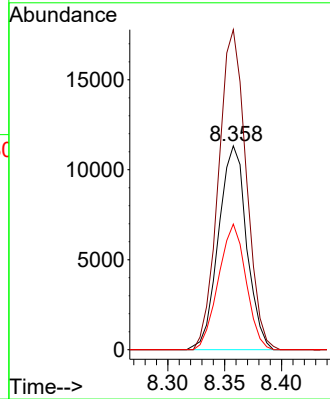


#1
 1,4-Dichlorobenzene-d4
 Concen: 20.000 ng
 RT: 8.358 min Scan# 81
 Delta R.T. -0.008 min
 Lab File: BG057538.D
 Acq: 24 May 2023 17:29

Instrument :
 BNA_G
 ClientSampleId :
 TP19

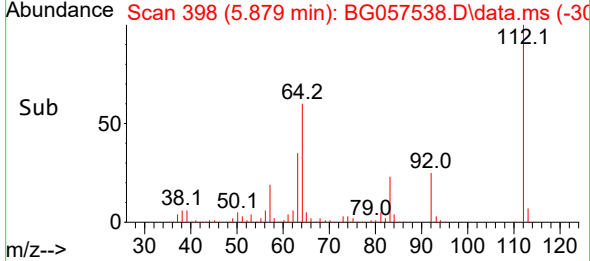
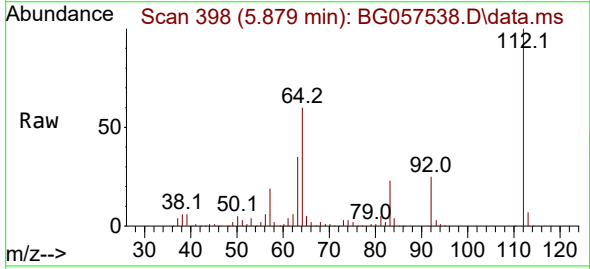
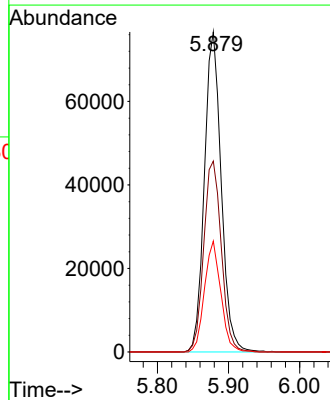


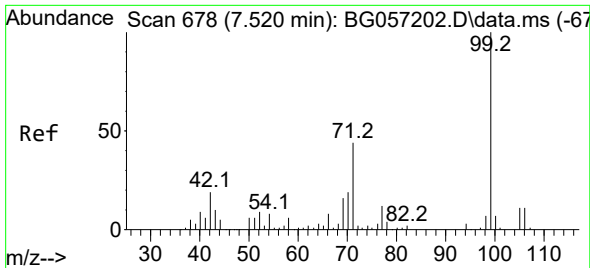
Tgt Ion:152 Resp: 19465
 Ion Ratio Lower Upper
 152 100
 150 157.0 126.2 189.4
 115 61.6 45.0 67.4



#5
 2-Fluorophenol
 Concen: 110.855 ng
 RT: 5.879 min Scan# 398
 Delta R.T. 0.004 min
 Lab File: BG057538.D
 Acq: 24 May 2023 17:29

Tgt Ion:112 Resp: 126142
 Ion Ratio Lower Upper
 112 100
 64 59.7 49.4 74.2
 63 34.6 31.6 47.4



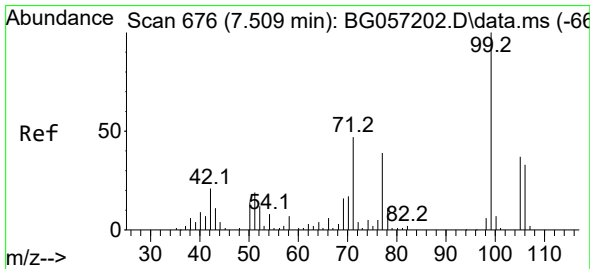
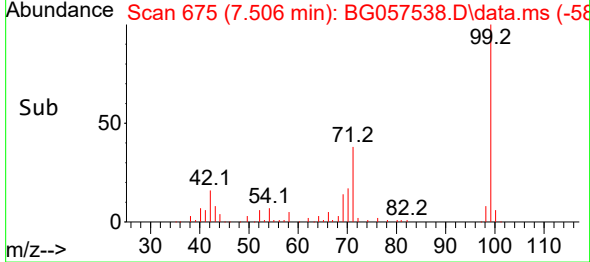
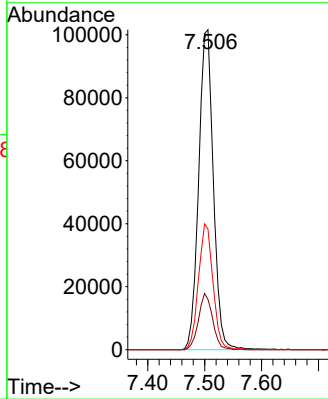
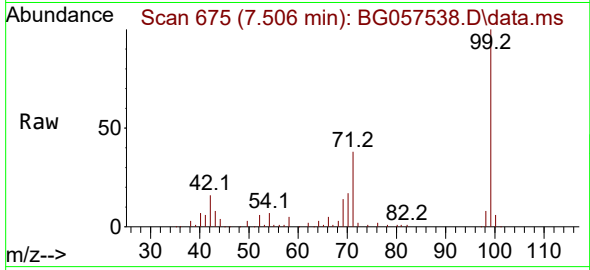


#7
 Phenol-d6
 Concen: 105.470 ng
 RT: 7.506 min Scan# 61
 Delta R.T. -0.002 min
 Lab File: BG057538.D
 Acq: 24 May 2023 17:29

Instrument :
 BNA_G
 ClientSampleId :
 TP19

Tgt Ion: 99 Resp: 182246

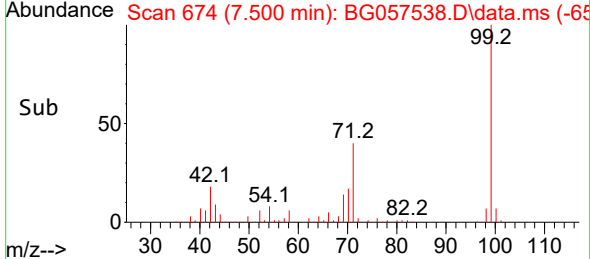
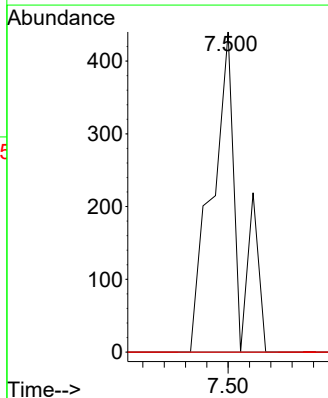
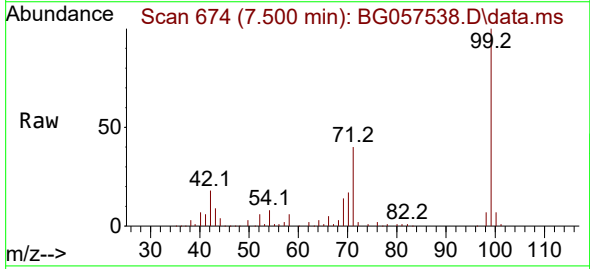
Ion	Ratio	Lower	Upper
99	100		
42	15.7	15.1	22.7
71	37.7	35.2	52.8

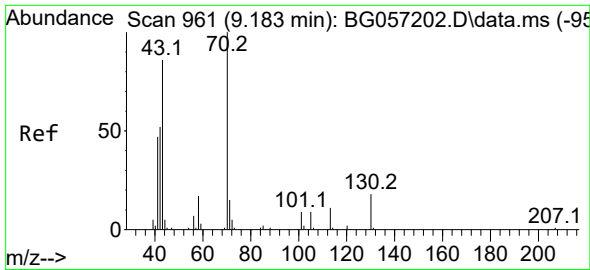


#9
 Benzaldehyde
 Concen: Below Cal
 RT: 7.500 min Scan# 674
 Delta R.T. 0.009 min
 Lab File: BG057538.D
 Acq: 24 May 2023 17:29

Tgt Ion: 77 Resp: 379

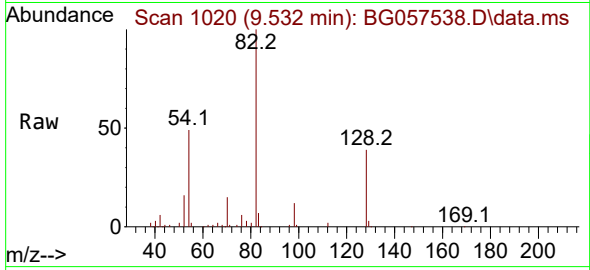
Ion	Ratio	Lower	Upper
77	100		
105	0.0	74.6	114.6#
106	0.0	66.3	106.3#



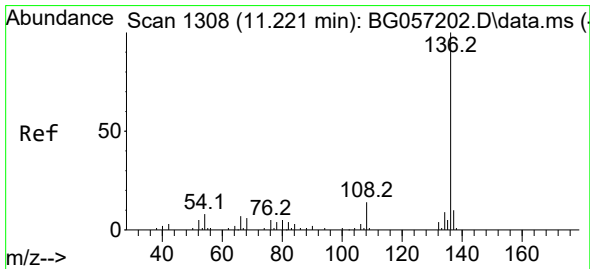
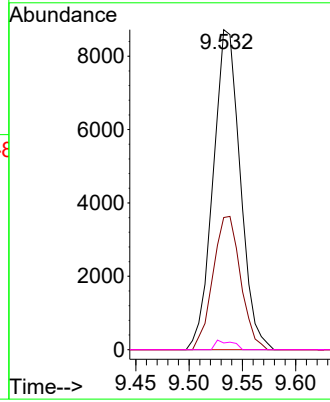
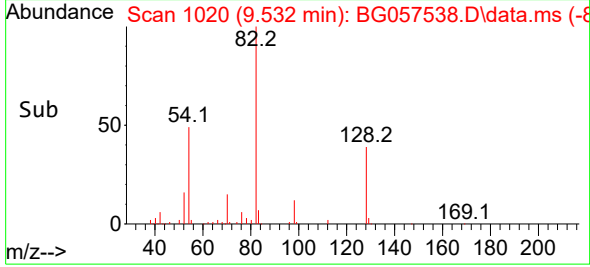


#19
 n-Nitroso-di-n-propylamine
 Concen: 11.706 ng
 RT: 9.532 min Scan# 1020
 Delta R.T. 0.368 min
 Lab File: BG057538.D
 Acq: 24 May 2023 17:29

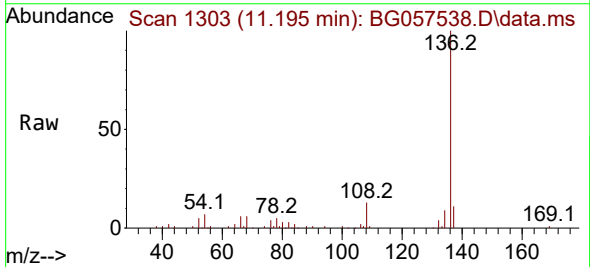
Instrument :
 BNA_G
 ClientSampleId :
 TP19



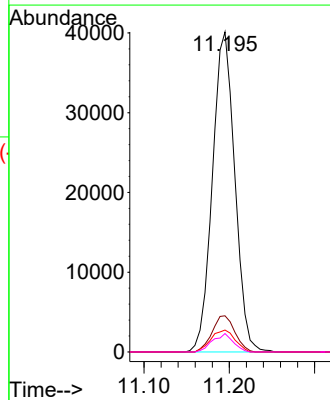
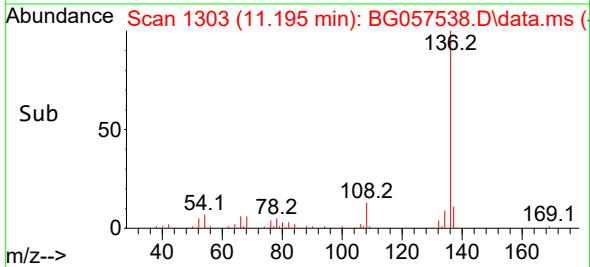
Tgt Ion: 70 Resp: 15423
 Ion Ratio Lower Upper
 70 100
 42 41.3 41.8 62.8#
 101 0.0 6.8 10.2#
 130 2.1 14.2 21.2#

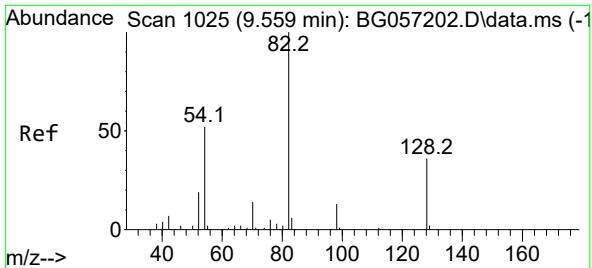


#21
 Naphthalene-d8
 Concen: 20.000 ng
 RT: 11.195 min Scan# 1303
 Delta R.T. -0.008 min
 Lab File: BG057538.D
 Acq: 24 May 2023 17:29



Tgt Ion:136 Resp: 72943
 Ion Ratio Lower Upper
 136 100
 137 11.3 8.3 12.5
 54 6.9 6.7 10.1
 68 5.8 4.6 6.8



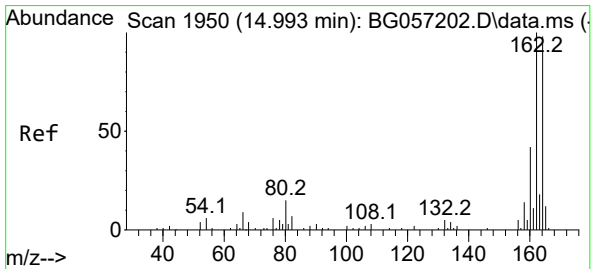
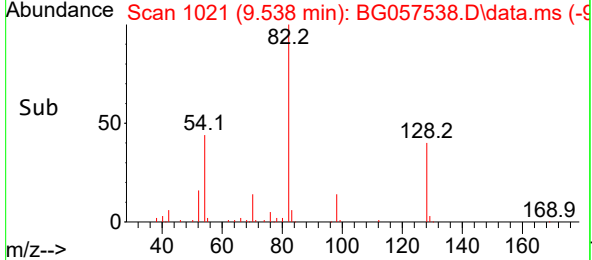
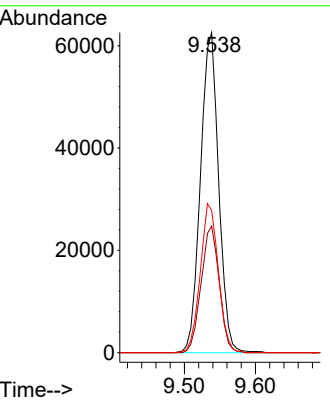
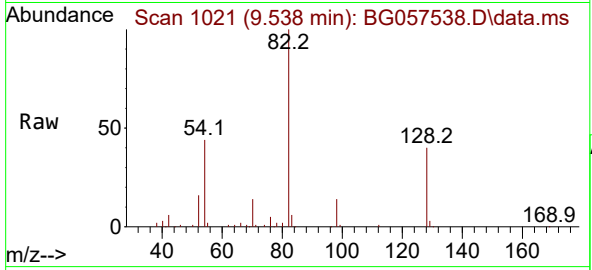


#23
 Nitrobenzene-d5
 Concen: 64.122 ng
 RT: 9.538 min Scan# 1021
 Delta R.T. -0.008 min
 Lab File: BG057538.D
 Acq: 24 May 2023 17:29

Instrument : BNA_G
 ClientSampleId : TP19

Tgt Ion: 82 Resp: 111441

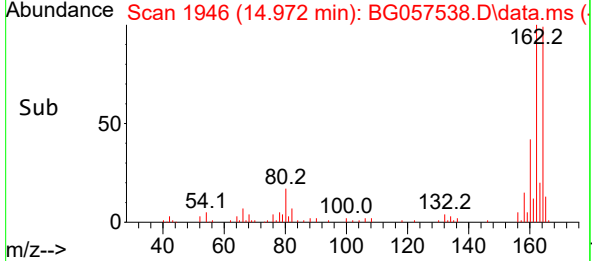
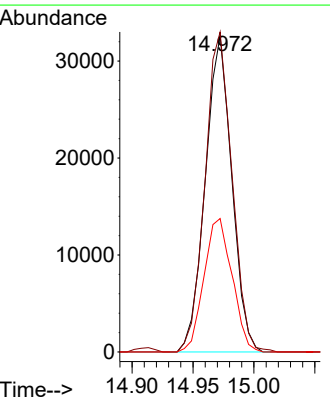
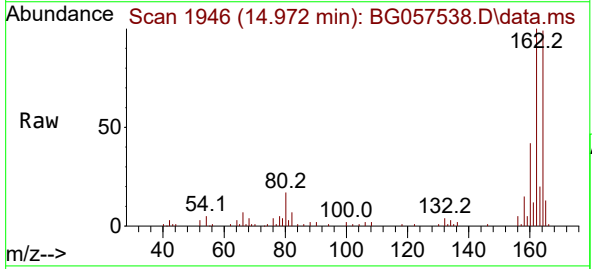
Ion	Ratio	Lower	Upper
82	100		
128	39.6	29.0	43.4
54	44.4	41.4	62.0

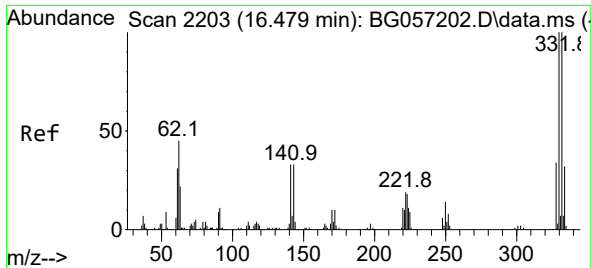


#39
 Acenaphthene-d10
 Concen: 20.000 ng
 RT: 14.972 min Scan# 1946
 Delta R.T. -0.008 min
 Lab File: BG057538.D
 Acq: 24 May 2023 17:29

Tgt Ion: 164 Resp: 49262

Ion	Ratio	Lower	Upper
164	100		
162	101.2	81.8	122.6
160	42.2	34.6	52.0

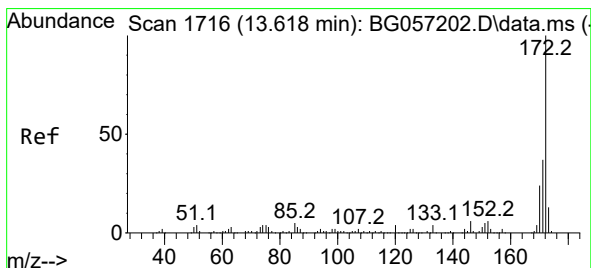
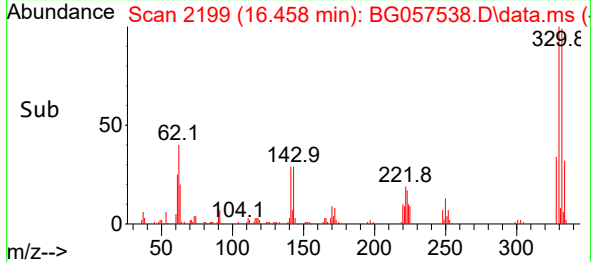
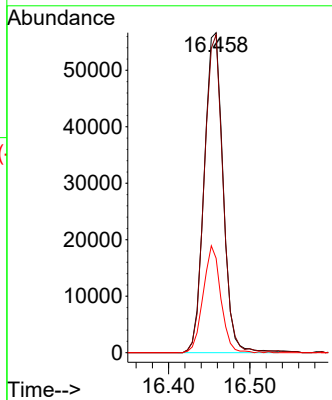
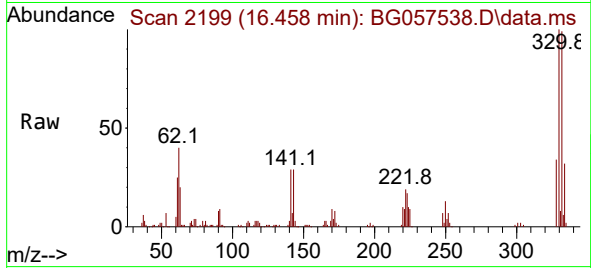




#42
 2,4,6-Tribromophenol
 Concen: 130.262 ng
 RT: 16.458 min Scan# 2199
 Delta R.T. -0.008 min
 Lab File: BG057538.D
 Acq: 24 May 2023 17:29

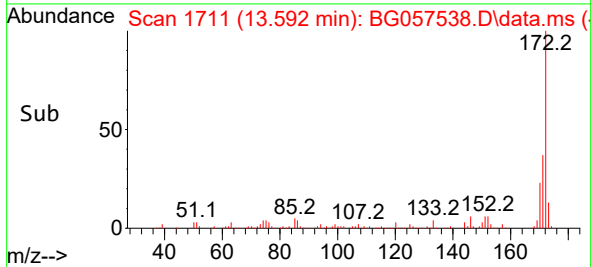
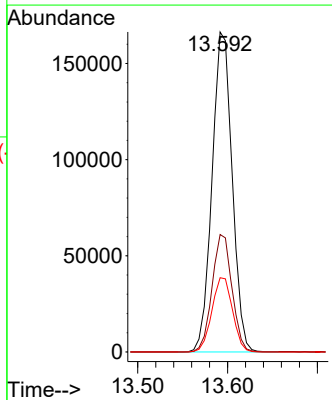
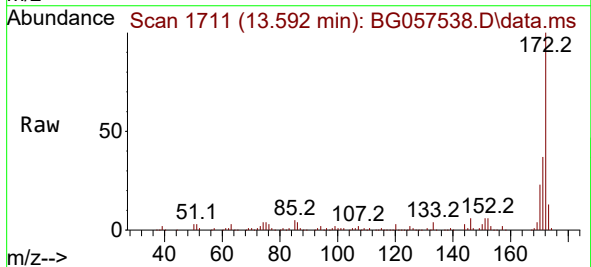
Instrument :
 BNA_G
 ClientSampleId :
 TP19

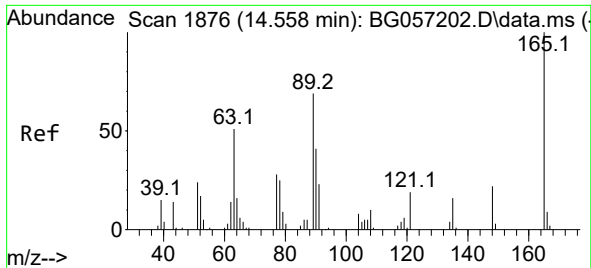
Tgt Ion	Resp	Lower	Upper
330	100		
332	98.8	78.2	117.2
141	31.3	27.8	41.8



#45
 2-Fluorobiphenyl
 Concen: 70.670 ng
 RT: 13.592 min Scan# 1711
 Delta R.T. -0.014 min
 Lab File: BG057538.D
 Acq: 24 May 2023 17:29

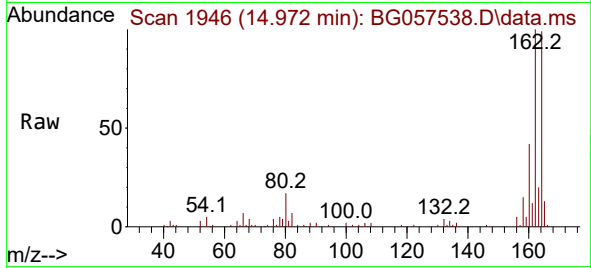
Tgt Ion	Resp	Lower	Upper
172	100		
171	36.7	29.4	44.0
170	23.2	19.0	28.6



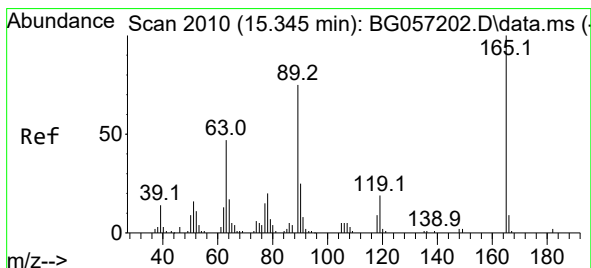
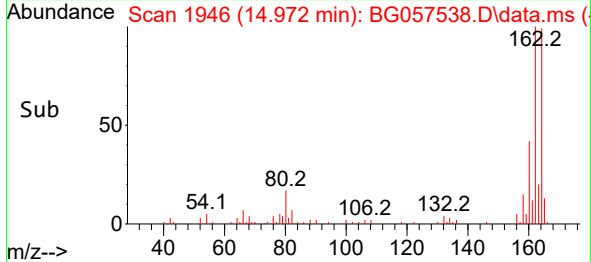
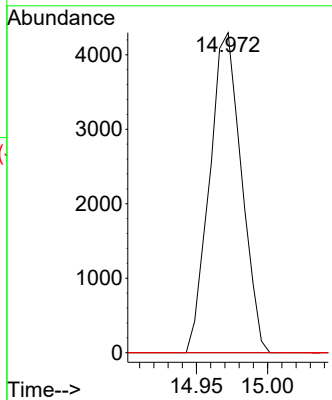


#51
 2,6-Dinitrotoluene
 Concen: 8.099 ng
 RT: 14.972 min Scan# 1946
 Delta R.T. 0.421 min
 Lab File: BG057538.D
 Acq: 24 May 2023 17:29

Instrument :
 BNA_G
 ClientSampleId :
 TP19

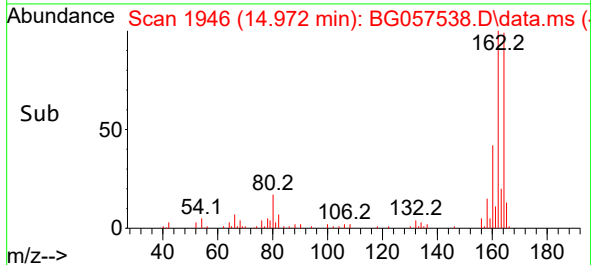
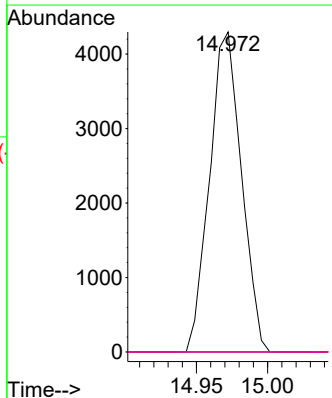
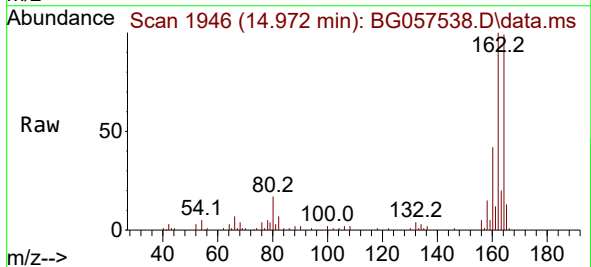


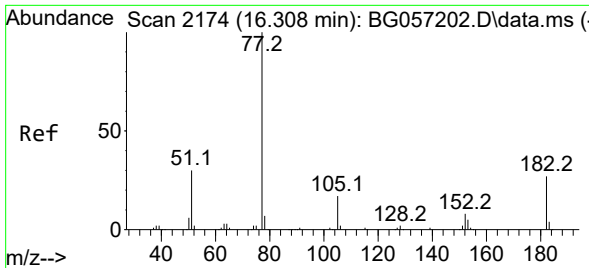
Tgt Ion	Resp	Lower	Upper
165	100		
63	0.0	50.9	76.3#
89	0.0	55.2	82.8#



#57
 2,4-Dinitrotoluene
 Concen: 5.667 ng
 RT: 14.972 min Scan# 1946
 Delta R.T. -0.366 min
 Lab File: BG057538.D
 Acq: 24 May 2023 17:29

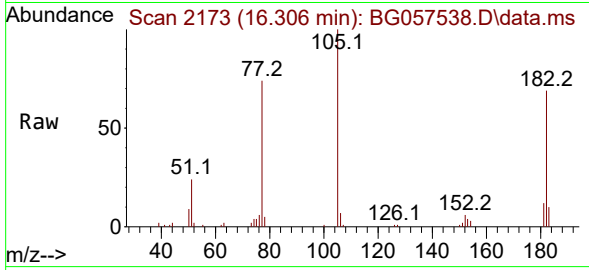
Tgt Ion	Resp	Lower	Upper
165	100		
63	0.0	37.5	56.3#
89	0.0	60.2	90.4#
182	0.0	1.8	2.8#





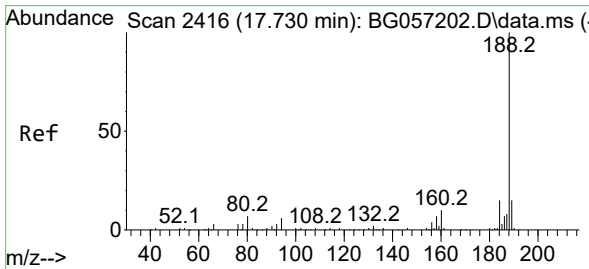
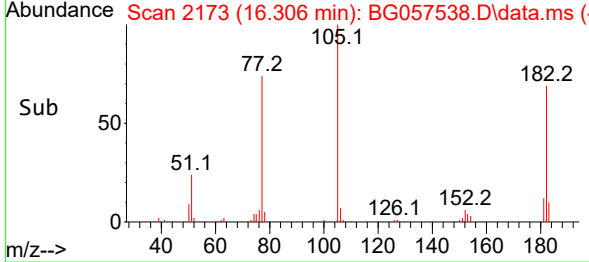
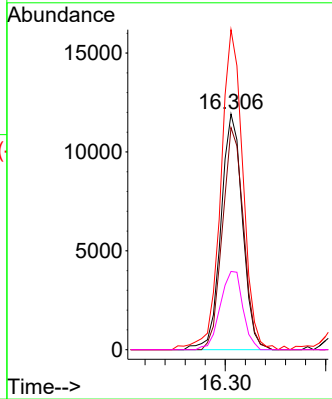
#63
 Azobenzene
 Concen: 4.474 ng
 RT: 16.306 min Scan# 2173
 Delta R.T. 0.015 min
 Lab File: BG057538.D
 Acq: 24 May 2023 17:29

Instrument : BNA_G
 ClientSampleId : TP19



Tgt Ion: 77 Resp: 17748

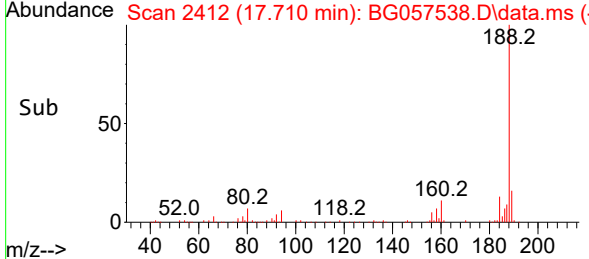
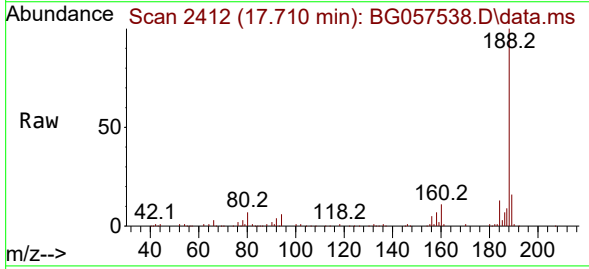
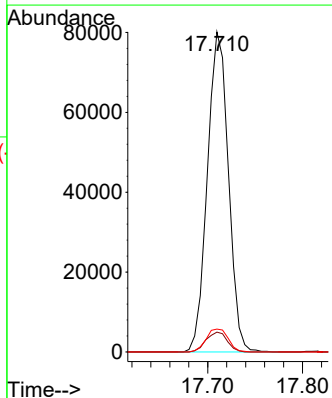
Ion	Ratio	Lower	Upper
77	100		
182	94.2	7.4	47.4#
105	135.8	0.0	37.2#
51	33.2	10.1	50.1

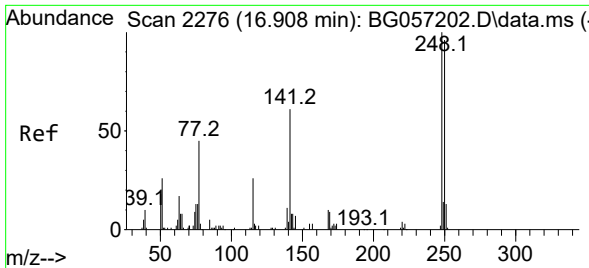


#64
 Phenanthrene-d10
 Concen: 20.000 ng
 RT: 17.710 min Scan# 2412
 Delta R.T. -0.014 min
 Lab File: BG057538.D
 Acq: 24 May 2023 17:29

Tgt Ion: 188 Resp: 123657

Ion	Ratio	Lower	Upper
188	100		
94	6.2	5.1	7.7
80	7.1	5.7	8.5

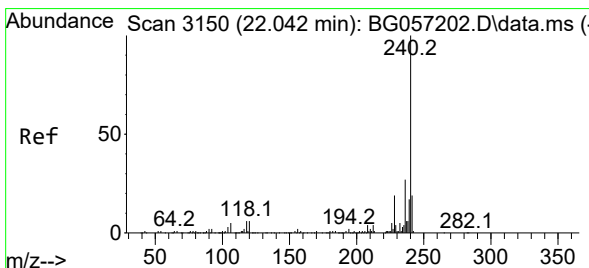
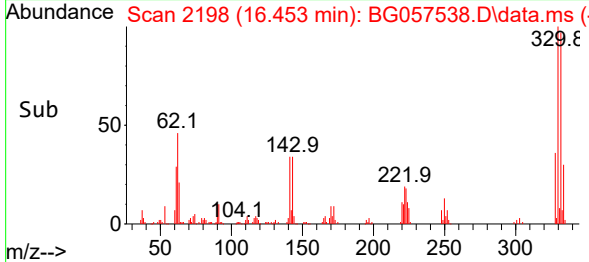
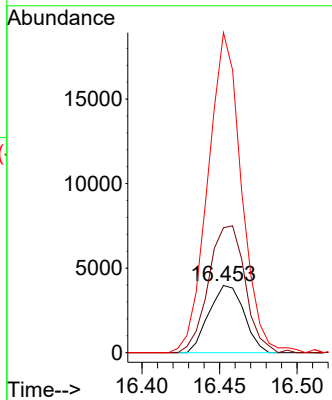
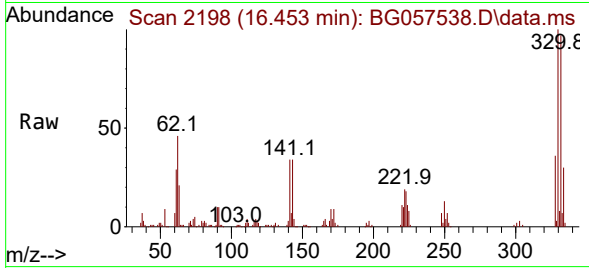




#67
 4-Bromophenyl-phenylether
 Concen: 4.124 ng
 RT: 16.453 min Scan# 2198
 Delta R.T. -0.443 min
 Lab File: BG057538.D
 Acq: 24 May 2023 17:29

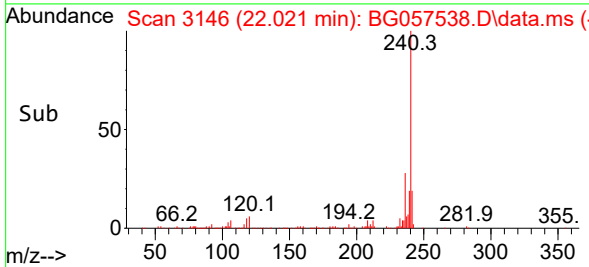
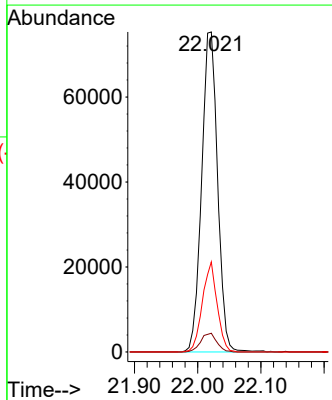
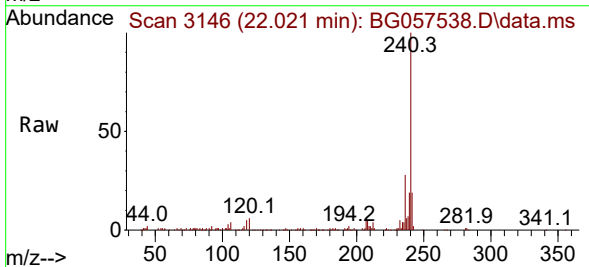
Instrument :
 BNA_G
 ClientSampleId :
 TP19

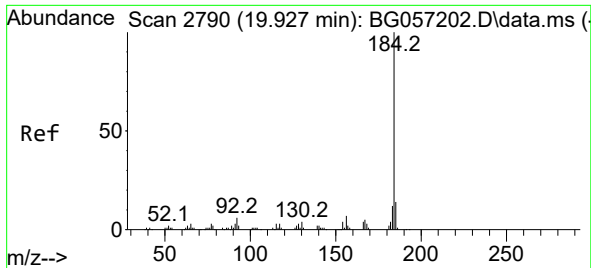
Tgt Ion	Resp	Lower	Upper
248	100		
250	185.9	77.0	115.6#
141	476.2	48.6	72.8#



#76
 Chrysene-d12
 Concen: 20.000 ng
 RT: 22.021 min Scan# 3146
 Delta R.T. -0.014 min
 Lab File: BG057538.D
 Acq: 24 May 2023 17:29

Tgt Ion	Resp	Lower	Upper
240	100		
120	5.8	4.9	7.3
236	28.1	21.4	32.2

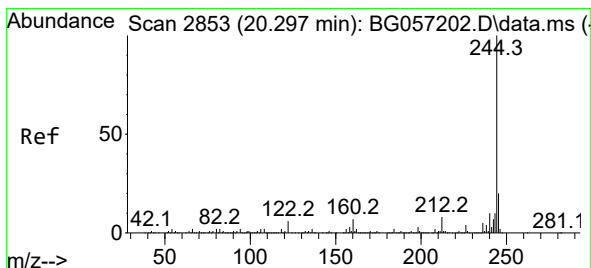
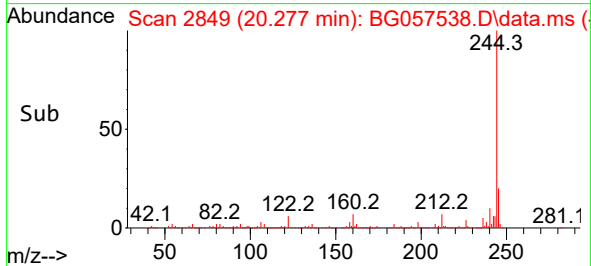
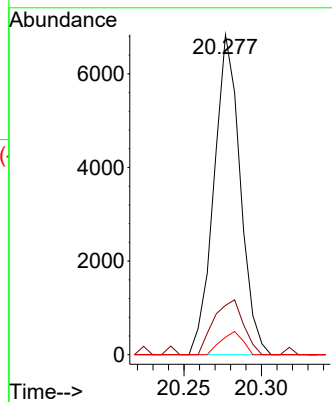
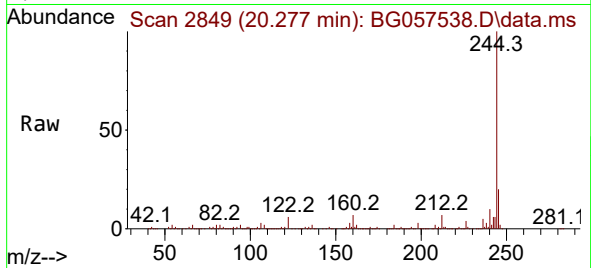




#77
 Benzidine
 Concen: 2.720 ng
 RT: 20.277 min Scan# 2849
 Delta R.T. 0.356 min
 Lab File: BG057538.D
 Acq: 24 May 2023 17:29

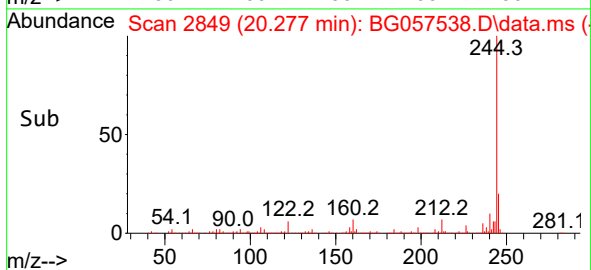
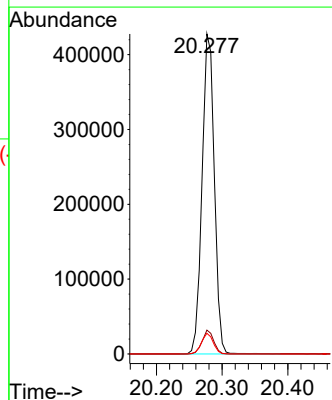
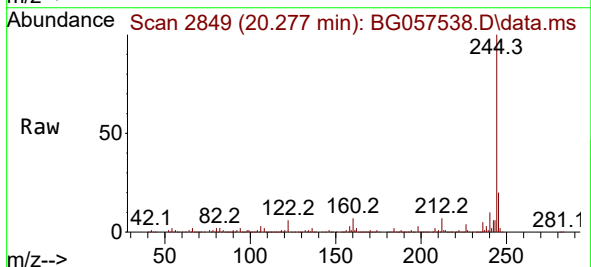
Instrument :
 BNA_G
 ClientSampleId :
 TP19

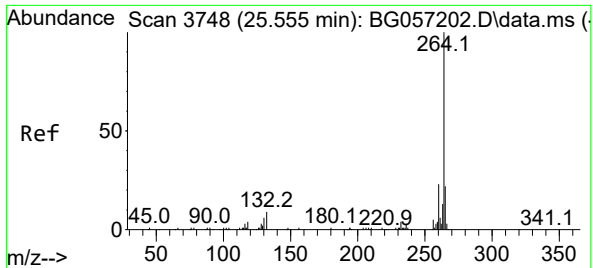
Tgt Ion:184 Resp: 8052
 Ion Ratio Lower Upper
 184 100
 185 15.4 11.1 16.7
 183 5.4 9.9 14.9#



#79
 Terphenyl-d14
 Concen: 68.704 ng
 RT: 20.277 min Scan# 2849
 Delta R.T. -0.014 min
 Lab File: BG057538.D
 Acq: 24 May 2023 17:29

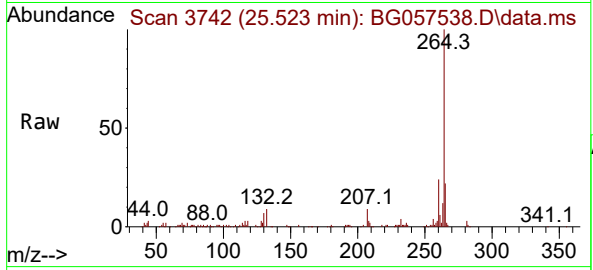
Tgt Ion:244 Resp: 557374
 Ion Ratio Lower Upper
 244 100
 212 7.4 6.1 9.1
 122 6.4 5.1 7.7





#86
 Perylene-d12
 Concen: 20.000 ng
 RT: 25.523 min Scan# 31
 Delta R.T. -0.020 min
 Lab File: BG057538.D
 Acq: 24 May 2023 17:29

Instrument :
 BNA_G
 ClientSampleId :
 TP19



Tgt Ion:264 Resp: 139706

Ion	Ratio	Lower	Upper
264	100		
260	24.4	18.8	28.2
265	22.3	17.9	26.9

