

Data Path : Z:\HPCHEM1\BNA G\DATA\BG052616\  
 Data File : BG022079.D  
 Acq On : 26 May 2016 13:41  
 Operator : UM/SJ  
 Sample : H3201-02  
 Misc :  
 ALS Vial : 9 Sample Multiplier: 1

Instrument :  
 BNA\_G  
 ClientSampleId :  
 BCZH1

## Integration Parameters: LSCINT.P

Integrator: RTE  
 Smoothing : OFF Filtering: 5  
 Sampling : 1 Min Area: 0.1 % of largest Peak  
 Start Thrs: 0.2 Max Peaks: 100  
 Stop Thrs : 0 Peak Location: TOP

If leading or trailing edge < 100 prefer < Baseline drop else tangent >  
 Peak separation: 5

Method : Z:\HPCHEM1\BNA G\METHODS\SOM02.2-EPA-BG052116.M  
 Title : SVOA CALIBRATION

Signal : TIC

peak #	R.T. min	first scan	max scan	last scan	PK TY	peak height	corr. area	corr. % max.	% of total
1	3.207	61	63	67	rVB4	3223	2616	0.41%	0.045%
2	3.313	79	81	83	rBV2	1968	1295	0.20%	0.022%
3	3.513	113	115	117	rBV3	1208	1310	0.20%	0.023%
4	3.877	173	177	181	rBV2	3815	5380	0.84%	0.093%
5	4.294	241	248	254	rBV	13044	24813	3.88%	0.428%
6	5.217	403	405	412	rVB4	2460	3686	0.58%	0.064%
7	5.540	456	460	462	rVB2	964	1265	0.20%	0.022%
8	5.640	472	477	484	rVB6	1594	3309	0.52%	0.057%
9	5.769	493	499	504	rBV4	3355	6901	1.08%	0.119%
10	6.145	555	563	568	rBV6	2627	4972	0.78%	0.086%
11	6.445	610	614	616	rBV4	978	1237	0.19%	0.021%
12	7.314	755	762	773	rVV	42644	91814	14.36%	1.585%
13	7.473	782	789	800	rBV	39006	80714	12.63%	1.393%
14	7.684	819	825	840	rVB	51506	102220	15.99%	1.765%
15	7.796	840	844	846	rBV2	963	1241	0.19%	0.021%
16	8.154	895	905	914	rBV	117007	239527	37.47%	4.135%
17	8.278	924	926	930	rVB3	1603	1772	0.28%	0.031%
18	8.366	934	941	943	rBV6	2859	4596	0.72%	0.079%
19	8.507	962	965	968	rBV	921	1220	0.19%	0.021%
20	8.671	990	993	996	rBV3	2009	3093	0.48%	0.053%
21	8.807	1012	1016	1018	rBV3	1734	2794	0.44%	0.048%
22	8.859	1019	1025	1037	rVV	55426	120440	18.84%	2.079%
23	9.324	1096	1104	1115	rBV	45574	101678	15.91%	1.755%
24	10.052	1220	1228	1242	rBV2	32283	72641	11.36%	1.254%
25	10.593	1313	1320	1331	rBV	54548	114875	17.97%	1.983%
26	10.681	1333	1335	1337	rVB2	1691	1388	0.22%	0.024%
27	10.792	1353	1354	1358	rBV2	1065	1180	0.18%	0.020%
28	10.863	1362	1366	1368	rVB2	1213	1710	0.27%	0.030%
29	10.910	1370	1374	1375	rBV3	2649	2776	0.43%	0.048%
30	10.975	1377	1385	1400	rVB	220710	446196	69.80%	7.703%
31	11.110	1400	1408	1417	rBV	52842	128245	20.06%	2.214%
32	11.451	1464	1466	1471	rVB4	1595	1716	0.27%	0.030%
33	11.592	1487	1490	1493	rBV2	1541	2563	0.40%	0.044%
34	11.668	1499	1503	1507	rVB5	2265	3440	0.54%	0.059%

Data Path : Z:\HPCHEM1\BNA G\DATA\BG052616\  
 Data File : BG022079.D  
 Acq On : 26 May 2016 13:41  
 Operator : UM/SJ  
 Sample : H3201-02  
 Misc :  
 ALS Vial : 9 Sample Multiplier: 1

Instrument :  
 BNA\_G  
 ClientSampleId :  
 BCZH1

## Integration Parameters: LSCINT.P

Integrator: RTE  
 Smoothing : OFF  
 Sampling : 1  
 Start Thrs: 0.2  
 Stop Thrs : 0

Filtering: 5  
 Min Area: 0.1 % of largest Peak  
 Max Peaks: 100  
 Peak Location: TOP

If leading or trailing edge < 100 prefer < Baseline drop else tangent >  
 Peak separation: 5

Method : Z:\HPCHEM1\BNA G\METHODS\SOM02.2-EPA-BG052116.M  
 Title : SVOA CALIBRATION

35	11.774	1518	1521	1523	rBV4	1273	1886	0.30%	0.033%
36	11.891	1540	1541	1544	rVB2	1782	1275	0.20%	0.022%
37	11.926	1544	1547	1548	rBV	1200	1390	0.22%	0.024%
38	11.962	1548	1553	1557	rVV3	4780	9308	1.46%	0.161%
39	12.009	1557	1561	1564	rVV6	2806	4997	0.78%	0.086%
40	12.062	1564	1570	1576	rVB8	3015	6722	1.05%	0.116%
41	12.232	1595	1599	1601	rBV3	1283	1515	0.24%	0.026%
42	12.344	1616	1618	1619	rBV2	2111	1822	0.29%	0.031%
43	12.461	1635	1638	1639	rBV2	1416	1391	0.22%	0.024%
44	12.479	1639	1641	1645	rVB4	3036	4069	0.64%	0.070%
45	12.561	1648	1655	1660	rVB7	3249	7161	1.12%	0.124%
46	12.690	1672	1677	1681	rVB7	1872	3031	0.47%	0.052%
47	12.761	1685	1689	1691	rBV4	1572	2281	0.36%	0.039%
48	12.784	1691	1693	1695	rVB	1520	1477	0.23%	0.025%
49	12.825	1695	1700	1701	rBV4	2142	3664	0.57%	0.063%
50	12.884	1707	1710	1714	rBV4	1137	1865	0.29%	0.032%
51	12.966	1721	1724	1725	rBV3	1543	1722	0.27%	0.030%
52	12.984	1725	1727	1732	rVB5	1666	2357	0.37%	0.041%
53	13.049	1736	1738	1740	rBV3	1361	1458	0.23%	0.025%
54	13.131	1749	1752	1761	rBV9	1628	3579	0.56%	0.062%
55	13.225	1764	1768	1770	rBV5	1988	2659	0.42%	0.046%
56	13.295	1775	1780	1786	rVB8	6128	11389	1.78%	0.197%
57	13.354	1786	1790	1791	rBV4	1246	1408	0.22%	0.024%
58	13.554	1820	1824	1826	rBV4	5386	8468	1.32%	0.146%
59	13.642	1836	1839	1841	rVV3	4099	5184	0.81%	0.089%
60	13.660	1841	1842	1849	rVV6	5397	5197	0.81%	0.090%
61	13.930	1887	1888	1891	rBV3	1657	1296	0.20%	0.022%
62	13.977	1892	1896	1898	rBV4	1966	2472	0.39%	0.043%
63	14.012	1901	1902	1904	rBV2	1875	1593	0.25%	0.028%
64	14.094	1911	1916	1920	rBV6	2903	4290	0.67%	0.074%
65	14.171	1922	1929	1934	rBV	156292	264284	41.34%	4.563%
66	14.218	1934	1937	1944	rVB	66617	107437	16.81%	1.855%
67	14.306	1949	1952	1955	rBV5	2285	2947	0.46%	0.051%
68	14.359	1959	1961	1965	rBV3	2262	1740	0.27%	0.030%
69	14.418	1967	1971	1973	rBV5	2139	2514	0.39%	0.043%
70	14.470	1973	1980	1992	rBV	195161	361588	56.56%	6.242%
71	14.594	1997	2001	2006	rVV4	6409	11549	1.81%	0.199%

Data Path : Z:\HPCHEM1\BNA G\DATA\BG052616\  
 Data File : BG022079.D  
 Acq On : 26 May 2016 13:41  
 Operator : UM/SJ  
 Sample : H3201-02  
 Misc :  
 ALS Vial : 9 Sample Multiplier: 1

Instrument :  
 BNA\_G  
 ClientSampleId :  
 BCZH1

## Integration Parameters: LSCINT.P

Integrator: RTE  
 Smoothing : OFF  
 Sampling : 1  
 Start Thrs: 0.2  
 Stop Thrs : 0

Filtering: 5  
 Min Area: 0.1 % of largest Peak  
 Max Peaks: 100  
 Peak Location: TOP

If leading or trailing edge < 100 prefer < Baseline drop else tangent >  
 Peak separation: 5

Method : Z:\HPCHEM1\BNA G\METHODS\SOM02.2-EPA-BG052116.M  
 Title : SVOA CALIBRATION

72	14.647	2006	2010	2019	rVB3	10584	18282	2.86%	0.316%
73	14.723	2020	2023	2024	rVV3	3651	3633	0.57%	0.063%
74	14.776	2025	2032	2041	rVB2	340405	622994	97.46%	10.755%
75	14.858	2041	2046	2049	rBV6	3603	6490	1.02%	0.112%
76	14.917	2054	2056	2058	rBV3	2533	2232	0.35%	0.039%
77	14.988	2066	2068	2071	rVB4	2342	1232	0.19%	0.021%
78	15.082	2081	2084	2086	rBV3	3383	4244	0.66%	0.073%
79	15.134	2091	2093	2095	rBV3	2632	2298	0.36%	0.040%
80	15.264	2111	2115	2122	rVB9	4776	7645	1.20%	0.132%
81	15.322	2122	2125	2128	rVB4	2176	3231	0.51%	0.056%
82	15.352	2128	2130	2132	rBV3	1513	1304	0.20%	0.023%
83	15.428	2141	2143	2144	rBV2	1559	1230	0.19%	0.021%
84	15.475	2148	2151	2152	rBV2	3858	3608	0.56%	0.062%
85	15.557	2160	2165	2167	rBV4	5093	7273	1.14%	0.126%
86	15.593	2167	2171	2175	rVB2	16549	22699	3.55%	0.392%
87	15.651	2177	2181	2184	rBV5	5120	6505	1.02%	0.112%
88	15.698	2187	2189	2192	rVB3	2116	1476	0.23%	0.025%
89	15.769	2194	2201	2210	rBV	245003	431776	67.54%	7.454%
90	15.992	2233	2239	2248	rBV4	15412	35013	5.48%	0.604%
91	16.057	2248	2250	2252	rVV3	2195	1304	0.20%	0.023%
92	16.210	2274	2276	2279	rBV3	4055	4154	0.65%	0.072%
93	16.451	2312	2317	2318	rBV3	21485	24897	3.89%	0.430%
94	16.574	2336	2338	2339	rBV2	2985	1925	0.30%	0.033%
95	16.709	2357	2361	2364	rBV6	4675	8794	1.38%	0.152%
96	17.297	2457	2461	2467	rBV3	20957	32565	5.09%	0.562%
97	17.520	2493	2499	2510	rBV2	356801	639245	100.00%	11.036%
98	17.620	2510	2516	2524	rVV2	216672	382388	59.82%	6.601%
99	19.899	2899	2904	2917	rBV	259044	503694	78.80%	8.696%
100	21.803	3224	3228	3234	rVB	321729	566758	88.66%	9.784%

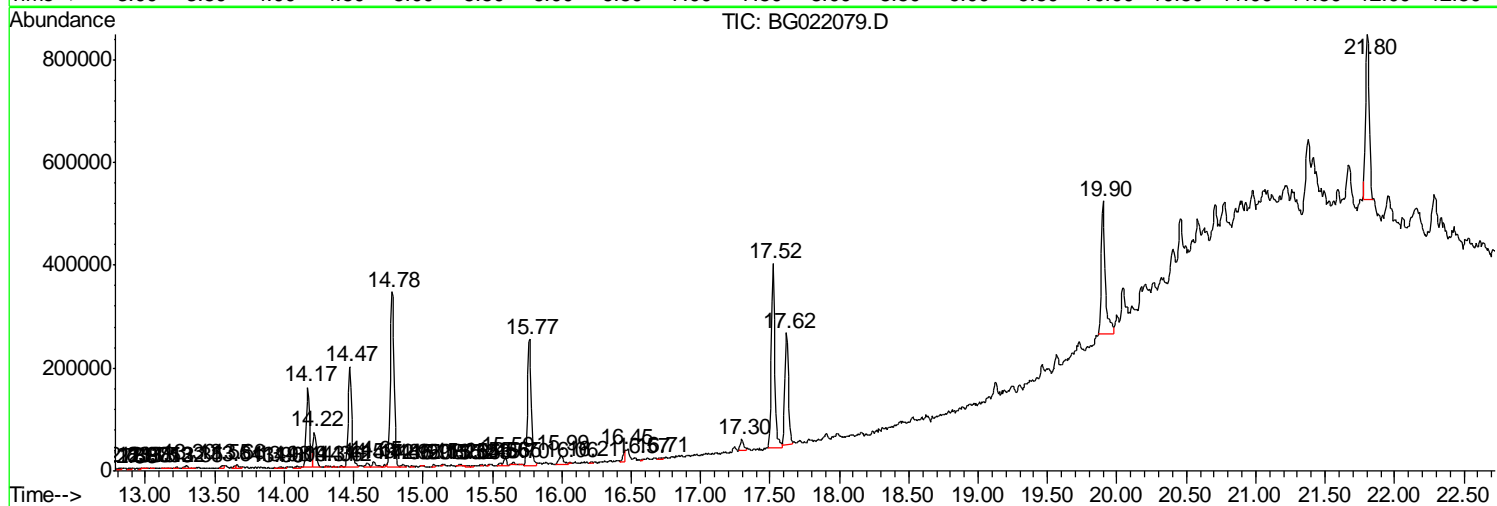
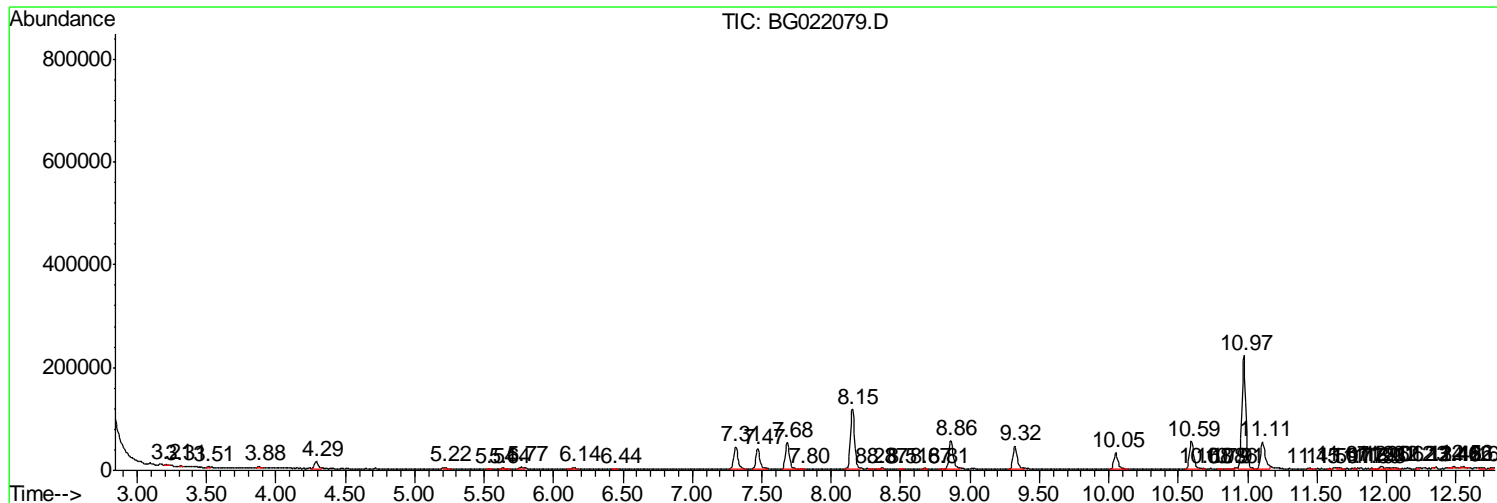
Sum of corrected areas: 5792497

Data Path : Z:\HPCHEM1\BNA G\DATA\BG052616\  
 Data File : BG022079.D  
 Acq On : 26 May 2016 13:41  
 Operator : UM/SJ  
 Sample : H3201-02  
 Misc :  
 ALS Vial : 9 Sample Multiplier: 1

Instrument :  
 BNA\_G  
 ClientSampleID :  
 BCZH1

Quant Method : Z:\HPCHEM1\BNA G\METHODS\SOM02.2-EPA-BG052116.M  
 Quant Title : SVOA CALIBRATION

TIC Library : C:\Database\NIST11.L  
 TIC Integration Parameters: LSCINT.P



Data Path : Z:\HPCHEM1\BNA\_G\DATA\BG052616\  
Data File : BG022079.D  
Acq On : 26 May 2016 13:41  
Operator : UM/SJ  
Sample : H3201-02  
Misc :  
ALS Vial : 9 Sample Multiplier: 1

Instrument :  
BNA\_G  
ClientSampleId :  
BCZH1

Quant Method : Z:\HPCHEM1\BNA\_G\METHODS\SOM02.2-EPA-BG052116.M  
Quant Title : SVOA CALIBRATION

TIC Library : C:\Database\NIST11.L  
TIC Integration Parameters: LSCINT.P

No Library Search Compounds Detected

\*\*\*\*\*

Data Path : Z:\HPCHEM1\BNA\_G\DATA\BG052616\  
Data File : BG022079.D  
Acq On : 26 May 2016 13:41  
Operator : UM/SJ  
Sample : H3201-02  
Misc :  
ALS Vial : 9 Sample Multiplier: 1

Instrument :  
BNA\_G  
ClientSampleId :  
BCZH1

Quant Method : Z:\HPCHEM1\BNA\_G\METHODS\SOM02.2-EPA-BG052116.M  
Quant Title : SVOA CALIBRATION

TIC Library : C:\Database\NIST11.L  
TIC Integration Parameters: LSCINT.P

TIC Top Hit name	RT	EstConc	Units	Response	--Internal Standard--			
					#	RT	Resp	Conc

---