

Data Path : Z:\svoasrv\HPCHEM1\BNA_G\Data\BG052622\
 Data File : BG053719.D
 Acq On : 26 May 2022 16:24
 Operator : CG/JU
 Sample : N2985-19
 Misc :
 ALS Vial : 9 Sample Multiplier: 1

Instrument :
 BNA_G
 ClientSampleId :
 P021-SS007-0006-01

Integration Parameters: rteint.p
 Integrator: RTE
 Smoothing : ON Filtering: 5
 Sampling : 1 Min Area: 3 % of largest Peak
 Start Thrs: 0.2 Max Peaks: 100
 Stop Thrs : 0 Peak Location: TOP

If leading or trailing edge < 100 prefer < Baseline drop else tangent >
 Peak separation: 5

Method : Z:\svoasrv\HPCHEM1\BNA_G\Methods\8270-BG050522.M
 Title : ASP BNA STANDARDS FOR 5 POINT CALIBRATION

Signal : TIC: BG053719.D\data.ms

peak #	R.T. min	first scan	max scan	last scan	PK TY	peak height	corr. area	corr. % max.	% of total
1	3.094	12	18	31	rVB	134508	262089	17.90%	2.097%
2	5.555	431	437	450	rBV	292987	501149	34.23%	4.010%
3	7.165	704	711	723	rBV	325632	567619	38.77%	4.542%
4	7.981	843	850	858	rBV	99500	170100	11.62%	1.361%
5	9.150	1041	1049	1057	rBV	209792	377510	25.79%	3.021%
6	10.795	1321	1329	1336	rBV	130041	233746	15.97%	1.870%
7	13.245	1739	1746	1752	rBV	559018	870072	59.43%	6.962%
8	13.315	1752	1758	1762	rBV3	65033	98037	6.70%	0.785%
9	13.385	1767	1770	1776	rVB	41453	58127	3.97%	0.465%
10	13.797	1834	1840	1846	rVB	287800	447362	30.56%	3.580%
11	14.431	1941	1948	1958	rBV	122952	192380	13.14%	1.539%
12	14.625	1974	1981	1987	rVB	200620	326277	22.29%	2.611%
13	14.690	1987	1992	2000	rBV5	24177	43761	2.99%	0.350%
14	14.901	2018	2028	2032	rBV7	21014	38952	2.66%	0.312%
15	15.207	2073	2080	2081	rBV4	32729	57566	3.93%	0.461%
16	15.453	2116	2122	2127	rBV3	45284	73216	5.00%	0.586%
17	15.518	2127	2133	2138	rVV3	50143	82225	5.62%	0.658%
18	15.618	2141	2150	2161	rVB6	39206	83988	5.74%	0.672%
19	15.906	2194	2199	2202	rBV5	12557	20783	1.42%	0.166%
20	15.953	2202	2207	2210	rVV3	31296	50215	3.43%	0.402%
21	15.988	2210	2213	2219	rVB4	36383	55623	3.80%	0.445%
22	16.111	2228	2234	2243	rVB	433894	691672	47.24%	5.535%
23	16.258	2255	2259	2263	rBV7	11037	20037	1.37%	0.160%
24	16.305	2263	2267	2271	rVV7	17822	35355	2.41%	0.283%
25	16.381	2275	2280	2284	rVB2	64086	85564	5.84%	0.685%
26	16.470	2289	2295	2306	rBV6	68470	140931	9.63%	1.128%
27	16.569	2306	2312	2320	rBV6	21718	53645	3.66%	0.429%
28	16.652	2321	2326	2333	rVV	164981	253607	17.32%	2.029%
29	16.716	2333	2337	2341	rVB7	16680	25588	1.75%	0.205%
30	16.804	2350	2352	2360	rVB8	19165	31766	2.17%	0.254%
31	16.963	2376	2379	2383	rBV6	11863	15235	1.04%	0.122%
32	17.104	2399	2403	2407	rVB6	28654	38293	2.62%	0.306%
33	17.186	2411	2417	2422	rBV2	154027	226769	15.49%	1.815%
34	17.280	2429	2433	2437	rBV	24019	29571	2.02%	0.237%
35	17.333	2437	2442	2443	rVV5	17989	30434	2.08%	0.244%
36	17.368	2443	2448	2458	rVB	247859	387300	26.45%	3.099%

Data Path : Z:\svoasrv\HPCHEM1\BNA_G\Data\BG052622\
 Data File : BG053719.D
 Acq On : 26 May 2022 16:24
 Operator : CG/JU
 Sample : N2985-19
 Misc :
 ALS Vial : 9 Sample Multiplier: 1

Instrument :
 BNA_G
 ClientSampleId :
 P021-SS007-0006-01

Integration Parameters: rteint.p
 Integrator: RTE
 Smoothing : ON Filtering: 5
 Sampling : 1 Min Area: 3 % of largest Peak
 Start Thrs: 0.2 Max Peaks: 100
 Stop Thrs : 0 Peak Location: TOP

If leading or trailing edge < 100 prefer < Baseline drop else tangent >
 Peak separation: 5

Method : Z:\svoasrv\HPCHEM1\BNA_G\Methods\8270-BG050522.M
 Title : ASP BNA STANDARDS FOR 5 POINT CALIBRATION

37	17.468	2458	2465	2470	rBV6	36673	70580	4.82%	0.565%
38	17.527	2472	2475	2479	rVB5	13954	15984	1.09%	0.128%
39	17.639	2490	2494	2499	rBV4	38812	55187	3.77%	0.442%
40	17.774	2513	2517	2518	rBV4	17517	21054	1.44%	0.168%
41	18.132	2573	2578	2584	rBV5	26570	48206	3.29%	0.386%
42	18.261	2591	2600	2618	rBV	484112	908030	62.02%	7.266%
43	18.596	2654	2657	2664	rVB6	24794	41596	2.84%	0.333%
44	19.172	2751	2755	2760	rBV2	67518	86125	5.88%	0.689%
45	19.389	2786	2792	2809	rBV2	532450	1464049	100.00%	11.716%
46	19.530	2813	2816	2830	rVB	140961	284075	19.40%	2.273%
47	19.865	2869	2873	2878	rVB	242428	276243	18.87%	2.211%
48	19.977	2887	2892	2897	rVB	864295	1121269	76.59%	8.973%
49	20.523	2982	2985	2990	rBV6	30057	48812	3.33%	0.391%
50	20.605	2996	2999	3004	rBV5	34313	50989	3.48%	0.408%
51	20.658	3005	3008	3014	rVB	56818	69420	4.74%	0.556%
52	21.263	3108	3111	3118	rVB3	59135	90457	6.18%	0.724%
53	21.510	3148	3153	3160	rVB	182144	256474	17.52%	2.052%
54	21.633	3169	3174	3181	rVB	258715	396425	27.08%	3.172%
55	23.031	3409	3412	3420	rVB4	58249	105032	7.17%	0.840%
56	24.835	3712	3719	3731	rVB2	146894	410002	28.00%	3.281%

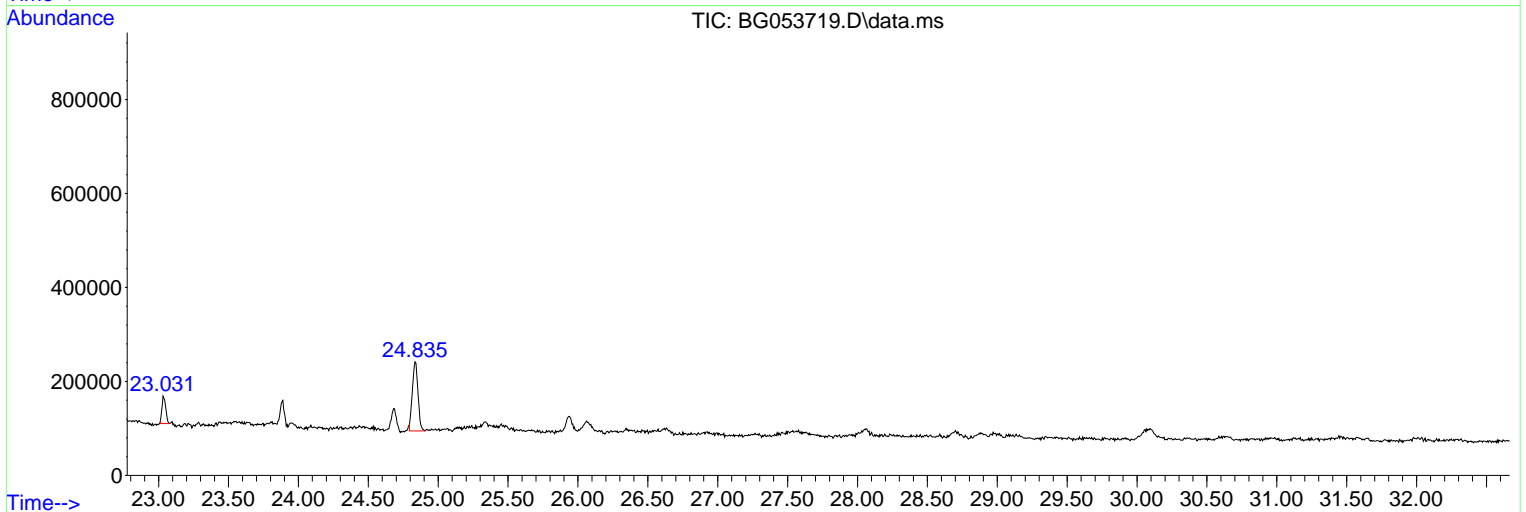
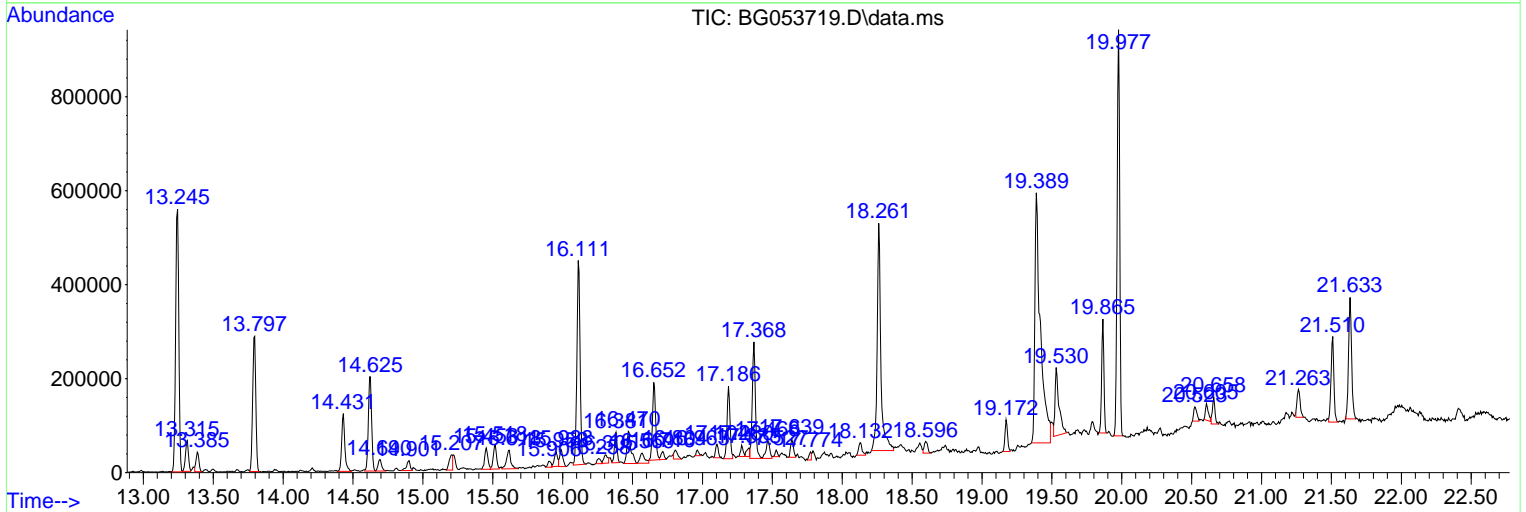
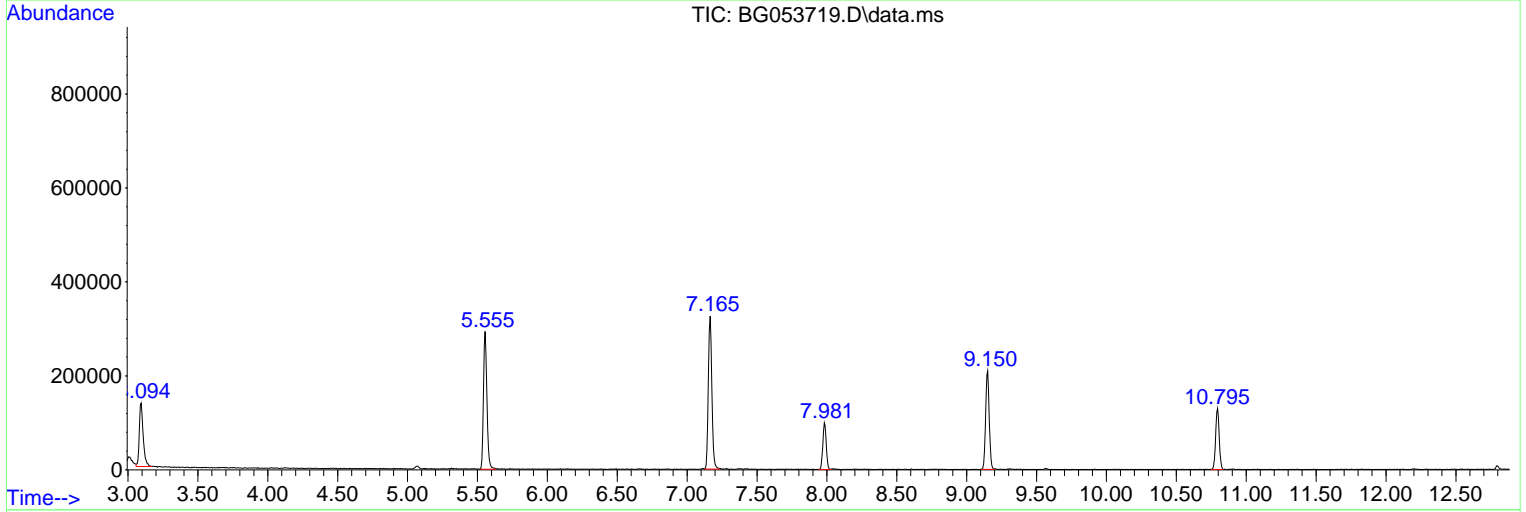
Sum of corrected areas: 12496573

Data Path : Z:\svoasrv\HPCHEM1\BNA_G\Data\BG052622\
 Data File : BG053719.D
 Acq On : 26 May 2022 16:24
 Operator : CG/JU
 Sample : N2985-19
 Misc :
 ALS Vial : 9 Sample Multiplier: 1

Instrument :
 BNA_G
ClientSampleId :
 P021-SS007-0006-01

Quant Method : Z:\svoasrv\HPCHEM1\BNA_G\Methods\8270-BG050522.M
 Quant Title : ASP BNA STANDARDS FOR 5 POINT CALIBRATION

TIC Library :
 TIC Integration Parameters: rteint.p



Library Search Compound Report

Data Path : Z:\svoasrv\HPCHEM1\BNA_G\Data\BG052622\
Data File : BG053719.D
Acq On : 26 May 2022 16:24
Operator : CG/JU
Sample : N2985-19
Misc :
ALS Vial : 9 Sample Multiplier: 1

Instrument :
BNA_G
ClientSampleId :
P021-SS007-0006-01

Quant Method : Z:\svoasrv\HPCHEM1\BNA_G\Methods\8270-BG050522.M
Quant Title : ASP BNA STANDARDS FOR 5 POINT CALIBRATION

TIC Library :
TIC Integration Parameters: rteint.p

No Library Search Compounds Detected

Data Path : Z:\svoasrv\HPCHEM1\BNA_G\Data\BG052622\
Data File : BG053719.D
Acq On : 26 May 2022 16:24
Operator : CG/JU
Sample : N2985-19
Misc :
ALS Vial : 9 Sample Multiplier: 1

Instrument :
BNA_G
ClientSampleId :
P021-SS007-0006-01

Quant Method : Z:\svoasrv\HPCHEM1\BNA_G\Methods\8270-BG050522.M
Quant Title : ASP BNA STANDARDS FOR 5 POINT CALIBRATION

TIC Library :
TIC Integration Parameters: rteint.p

TIC Top Hit name	RT	EstConc	Units	Response	#	RT	Resp	Conc
------------------	----	---------	-------	----------	---	----	------	------
