

Data Path : Z:\svoasrv\HPCHEM1\BNA_G\Data\BG052822\
 Data File : BG053760.D
 Acq On : 28 May 2022 21:11
 Operator : CG/JU
 Sample : N3000-01DL 2X
 Misc :
 ALS Vial : 15 Sample Multiplier: 1

Instrument :
 BNA_G
 ClientSampleId :
 TP-01-COMPDL

Manual Integrations
 APPROVED

Reviewed By : Christian Giraldo 05/29/2022
 Supervised By : Jagrut Upadhyay 05/31/2022

Quant Time: May 29 02:20:37 2022
 Quant Method : Z:\svoasrv\HPCHEM1\BNA_G\Methods\8270-BG050522.M
 Quant Title : ASP BNA STANDARDS FOR 5 POINT CALIBRATION
 QLast Update : Sun May 29 02:17:06 2022
 Response via : Initial Calibration

Compound	R.T.	QIon	Response	Conc	Units	Dev(Min)	
Internal Standards							
1) 1,4-Dichlorobenzene-d4	7.945	152	58175	20.000	ng	0.00	
21) Naphthalene-d8	10.759	136	235497	20.000	ng	0.00	
39) Acenaphthene-d10	14.589	164	158614	20.000	ng	0.00	
64) Phenanthrene-d10	17.339	188	325508	20.000	ng	0.00	#
76) Chrysene-d12	21.603	240	292461	20.000	ng	0.00	#
86) Perylene-d12	24.781	264	302507	20.000	ng	0.00	
System Monitoring Compounds							
5) 2-Fluorophenol	5.525	112	152267	44.421	ng	0.00	
7) Phenol-d6	7.147	99	226624	43.563	ng	0.00	
23) Nitrobenzene-d5	9.114	82	153172	27.687	ng	0.00	
42) 2,4,6-Tribromophenol	16.087	330	87194	37.272	ng	0.00	
45) 2-Fluorobiphenyl	13.209	172	304528	28.056	ng	0.00	
79) Terphenyl-d14	19.947	244	397324	25.303	ng	0.00	
Target Compounds							
71) Phenanthrene	17.380	178	341219	20.616	ng	98	
72) Anthracene	17.474	178	80447	4.945	ng	98	
75) Fluoranthene	19.395	202	755833	35.268	ng	96	
78) Pyrene	19.759	202	709871	37.495	ng	99	
81) Benzo(a)anthracene	21.586	228	368418	19.750	ng	98	
83) Chrysene	21.650	228	318063	18.256	ng	96	
87) Indeno(1,2,3-cd)pyrene	28.412	276	194060	9.211	ng	95	#
88) Benzo(b)fluoranthene	23.771	252	412831	23.056	ng	98	#
89) Benzo(k)fluoranthene	23.830	252	132244m	7.516	ng		
90) Benzo(a)pyrene	24.629	252	313869	20.594	ng	97	#
91) Dibenzo(a,h)anthracene	28.447	278	50063	2.884	ng	93	
92) Benzo(g,h,i)perylene	29.557	276	185897	10.802	ng	94	#

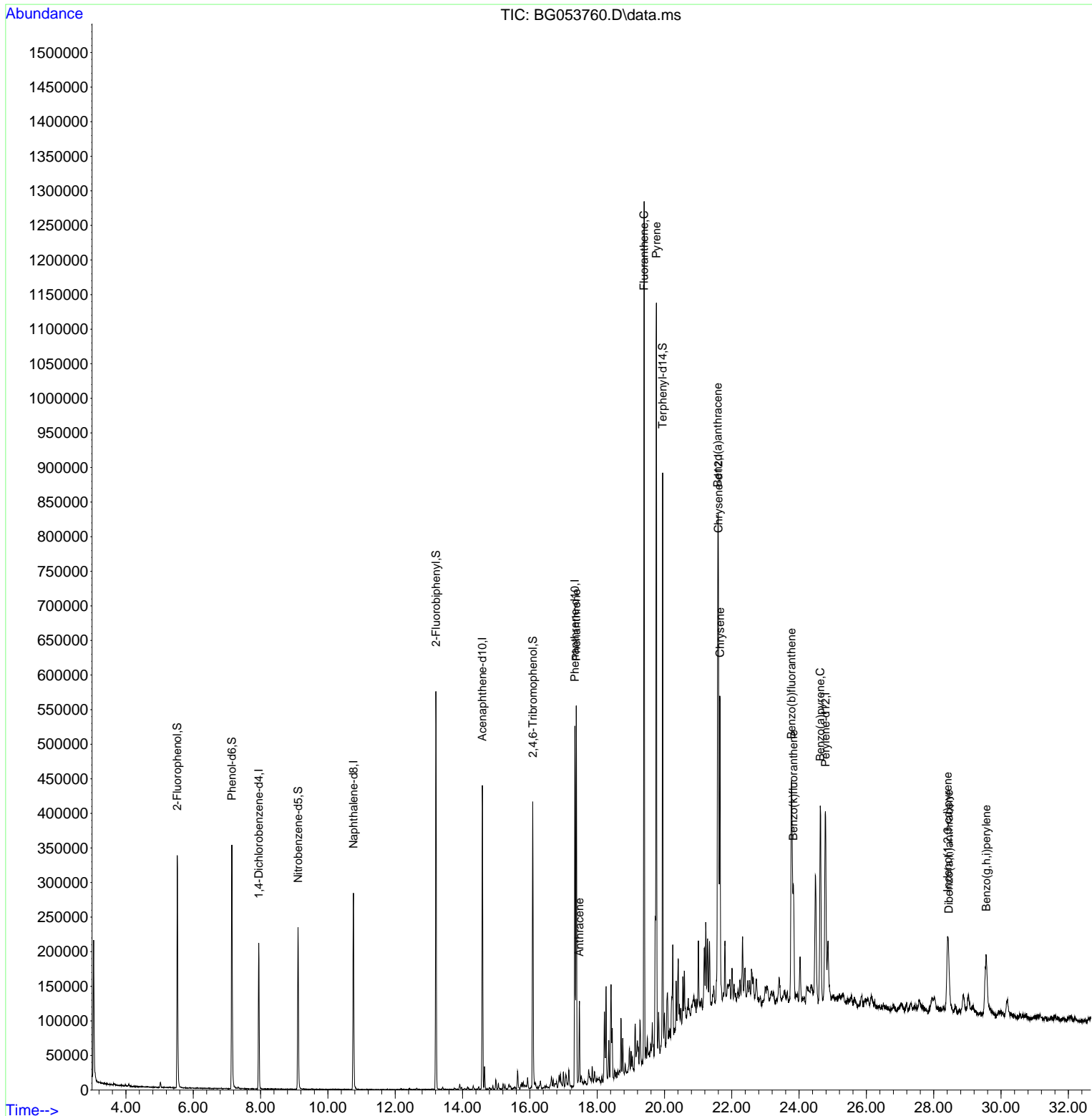
(#) = qualifier out of range (m) = manual integration (+) = signals summed

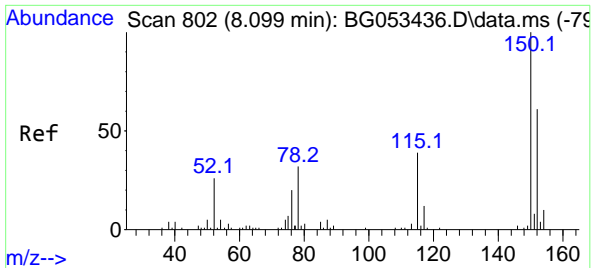
Data Path : Z:\svoasrv\HPCHEM1\BNA_G\Data\BG052822\
 Data File : BG053760.D
 Acq On : 28 May 2022 21:11
 Operator : CG/JU
 Sample : N3000-01DL 2X
 Misc :
 ALS Vial : 15 Sample Multiplier: 1

Instrument :
 BNA_G
ClientSampleId :
 TP-01-COMPDL

Quant Time: May 29 02:20:37 2022
 Quant Method : Z:\svoasrv\HPCHEM1\BNA_G\Methods\8270-BG050522.M
 Quant Title : ASP BNA STANDARDS FOR 5 POINT CALIBRATION
 QLast Update : Sun May 29 02:17:06 2022
 Response via : Initial Calibration

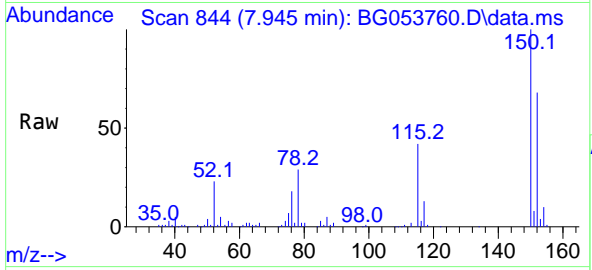
Manual Integrations
APPROVED
 Reviewed By :Christian Giraldo 05/29/2022
 Supervised By :Jagrut Upadhyay 05/31/2022





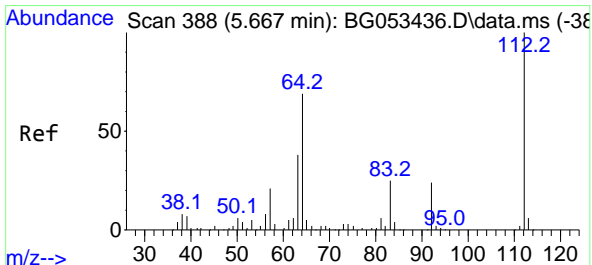
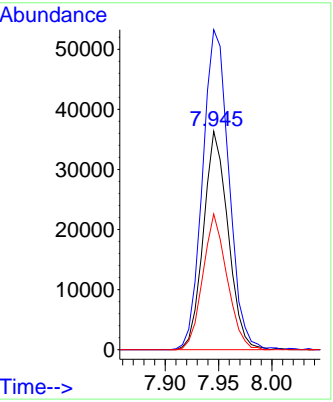
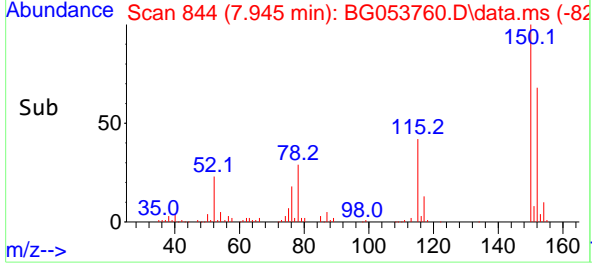
#1
 1,4-Dichlorobenzene-d4
 Concen: 20.000 ng
 RT: 7.945 min Scan# 844
 Delta R.T. -0.006 min
 Lab File: BG053760.D
 Acq: 28 May 2022 21:11

Instrument : BNA_G
 ClientSampleId : TP-01-COMPDL

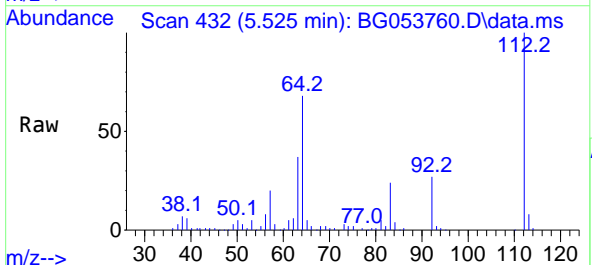


Tgt Ion:152 Resp: 5817
 Ion Ratio Lower Upper
 152 100
 150 146.5 131.6 197.4
 115 62.1 50.9 76.3

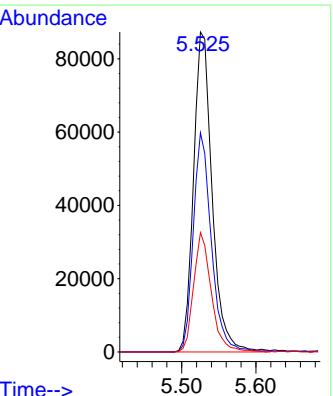
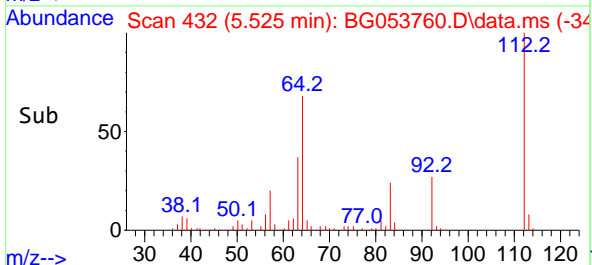
Manual Integrations
APPROVED
 Reviewed By :Christian Giraldo 05/29/2022
 Supervised By :Jagrut Upadhyay 05/31/2022

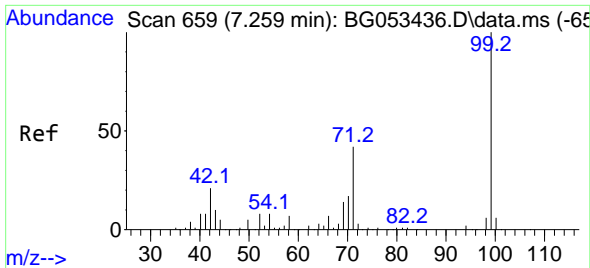


#5
 2-Fluorophenol
 Concen: 44.421 ng
 RT: 5.525 min Scan# 432
 Delta R.T. 0.000 min
 Lab File: BG053760.D
 Acq: 28 May 2022 21:11



Tgt Ion:112 Resp: 152267
 Ion Ratio Lower Upper
 112 100
 64 68.5 55.1 82.7
 63 37.3 30.4 45.6





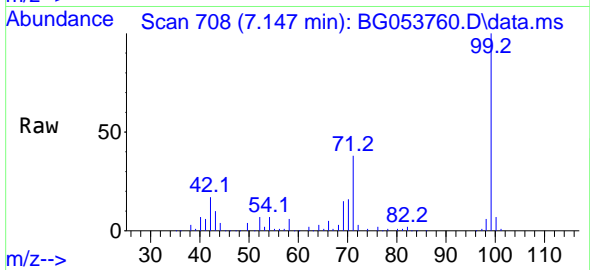
#7
Phenol-d6
Concen: 43.563 ng
RT: 7.147 min Scan# 70
Delta R.T. -0.006 min
Lab File: BG053760.D
Acq: 28 May 2022 21:11

Instrument :

BNA_G

ClientSampleId :

TP-01-COMPDL

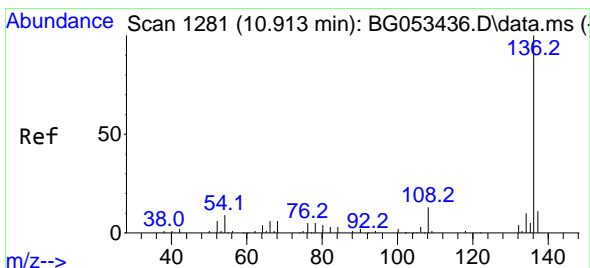
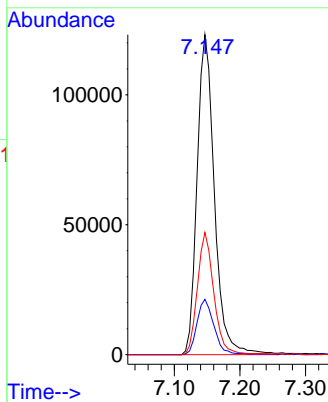
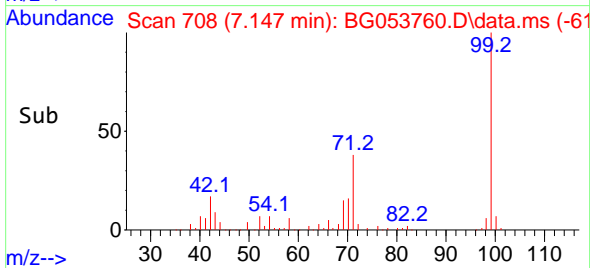


Tgt Ion: 99 Resp: 226624
Ion Ratio Lower Upper
99 100
42 17.3 17.0 25.6
71 38.2 33.8 50.8

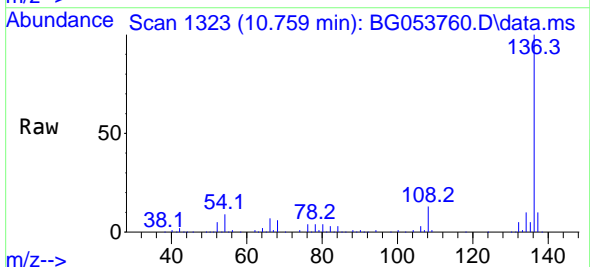
Manual Integrations

APPROVED

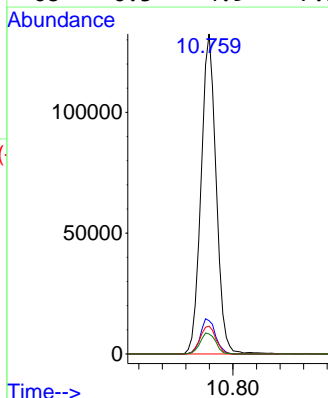
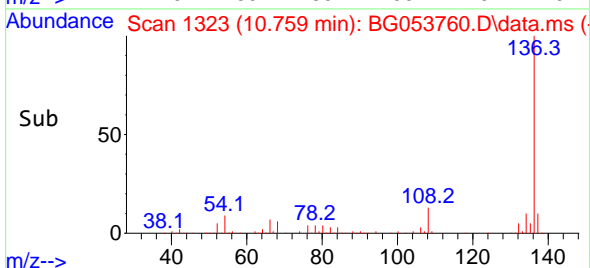
Reviewed By :Christian Giraldo 05/29/2022
Supervised By :Jagrut Upadhyay 05/31/2022

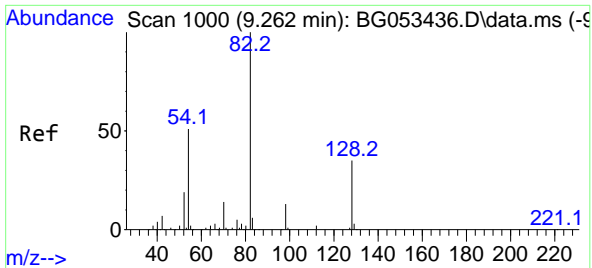


#21
Naphthalene-d8
Concen: 20.000 ng
RT: 10.759 min Scan# 1323
Delta R.T. -0.000 min
Lab File: BG053760.D
Acq: 28 May 2022 21:11



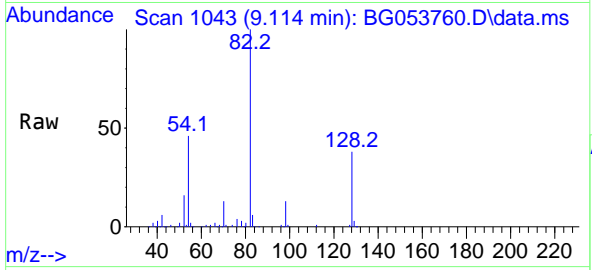
Tgt Ion:136 Resp: 235497
Ion Ratio Lower Upper
136 100
137 10.4 8.5 12.7
54 8.7 7.4 11.2
68 6.3 4.9 7.3





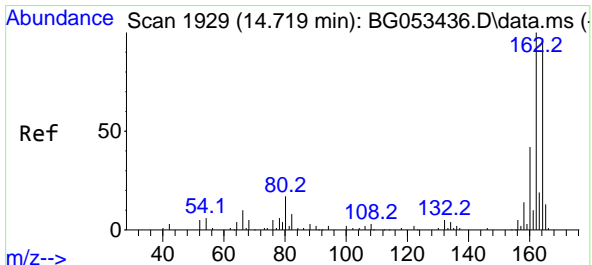
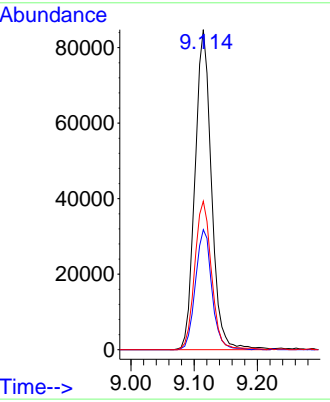
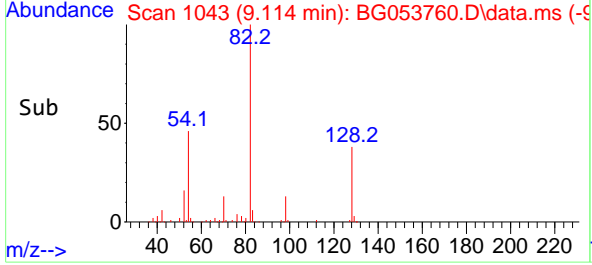
#23
 Nitrobenzene-d5
 Concen: 27.687 ng
 RT: 9.114 min Scan# 10
 Delta R.T. -0.006 min
 Lab File: BG053760.D
 Acq: 28 May 2022 21:11

Instrument : BNA_G
 Client Sample Id : TP-01-COMPDL

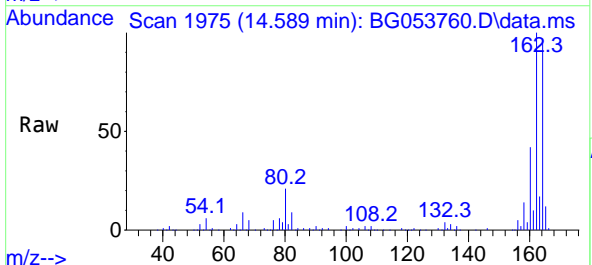


Tgt Ion: 82 Resp: 15317
 Ion Ratio Lower Upper
 82 100
 128 37.5 27.9 41.9
 54 46.4 41.2 61.8

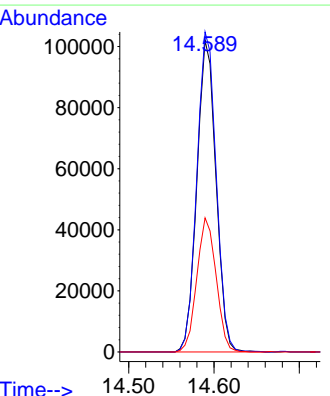
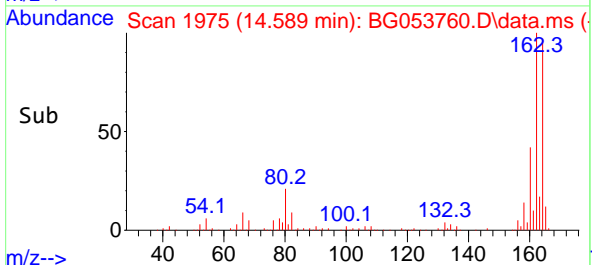
Manual Integrations
APPROVED
 Reviewed By :Christian Giraldo 05/29/2022
 Supervised By :Jagrut Upadhyay 05/31/2022

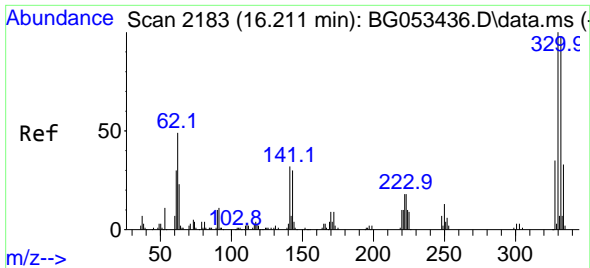


#39
 Acenaphthene-d10
 Concen: 20.000 ng
 RT: 14.589 min Scan# 1975
 Delta R.T. -0.006 min
 Lab File: BG053760.D
 Acq: 28 May 2022 21:11



Tgt Ion:164 Resp: 158614
 Ion Ratio Lower Upper
 164 100
 162 102.7 82.3 123.5
 160 43.0 34.2 51.2





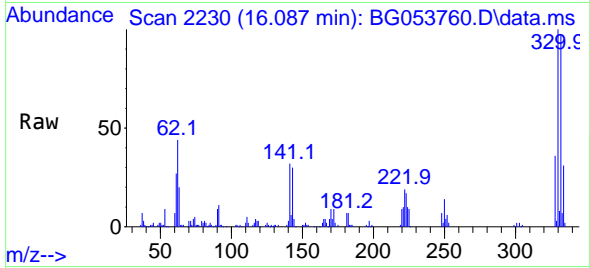
#42
 2,4,6-Tribromophenol
 Concen: 37.272 ng
 RT: 16.087 min Scan# 21
 Delta R.T. -0.006 min
 Lab File: BG053760.D
 Acq: 28 May 2022 21:11

Instrument :

BNA_G

Client Sample Id :

TP-01-COMPDL

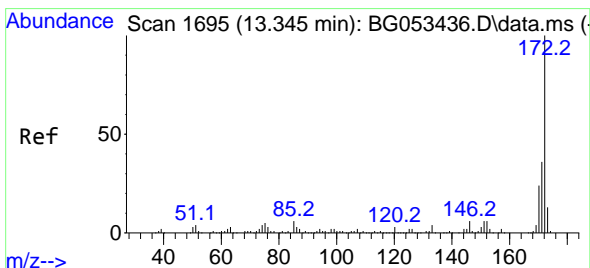
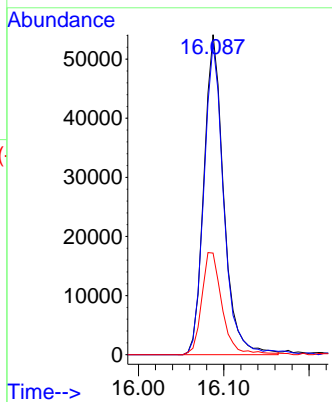
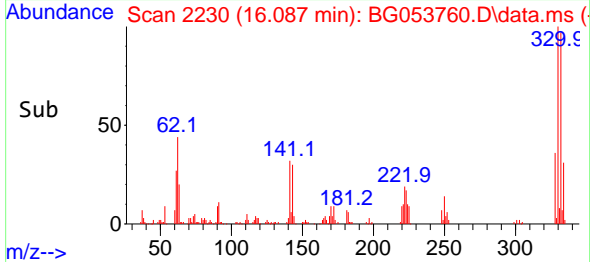


Tgt Ion: 330 Resp: 87194
 Ion Ratio Lower Upper
 330 100
 332 97.9 76.0 114.0
 141 32.9 27.1 40.7

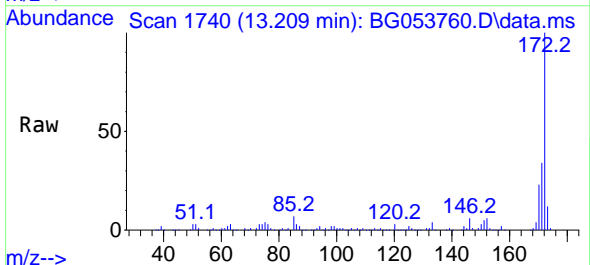
Manual Integrations

APPROVED

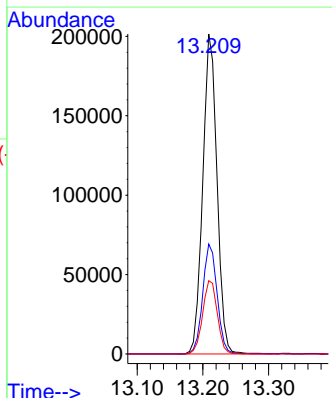
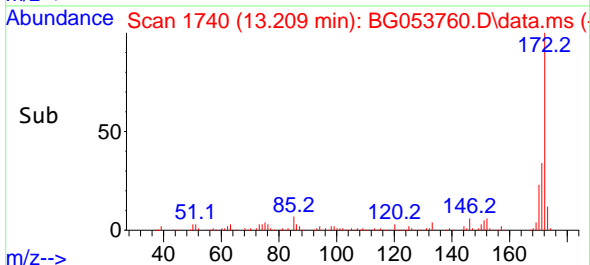
Reviewed By : Christian Giraldo 05/29/2022
 Supervised By : Jagrut Upadhyay 05/31/2022

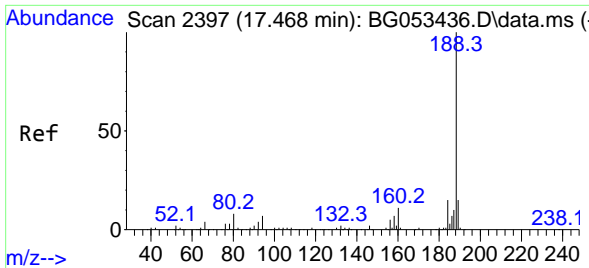


#45
 2-Fluorobiphenyl
 Concen: 28.056 ng
 RT: 13.209 min Scan# 1740
 Delta R.T. -0.006 min
 Lab File: BG053760.D
 Acq: 28 May 2022 21:11



Tgt Ion: 172 Resp: 304528
 Ion Ratio Lower Upper
 172 100
 171 34.4 28.5 42.7
 170 22.9 18.9 28.3





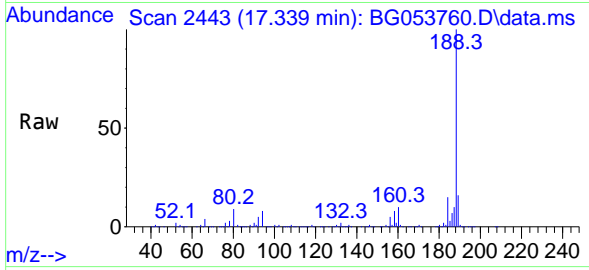
#64
 Phenanthrene-d10
 Concen: 20.000 ng
 RT: 17.339 min Scan# 24
 Delta R.T. -0.006 min
 Lab File: BG053760.D
 Acq: 28 May 2022 21:11

Instrument :

BNA_G

ClientSampleId :

TP-01-COMPDL

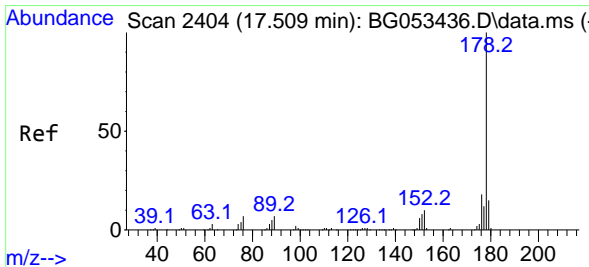
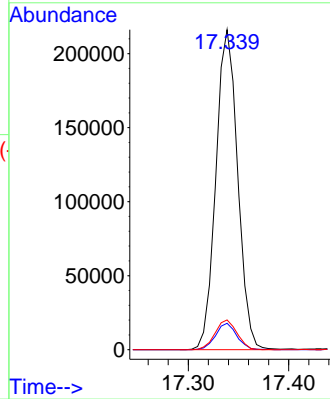
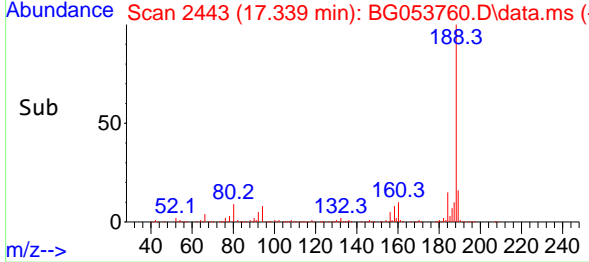


Tgt Ion:188 Resp: 325500
 Ion Ratio Lower Upper
 188 100
 94 8.3 5.4 8.0
 80 9.3 6.8 10.2

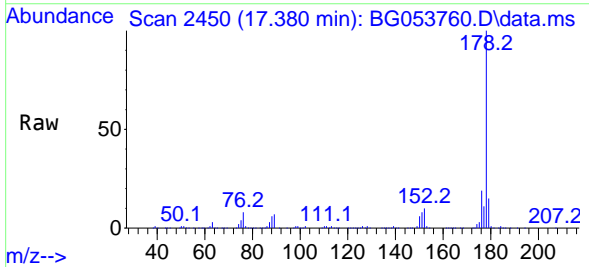
Manual Integrations

APPROVED

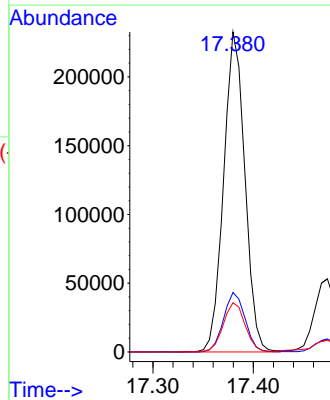
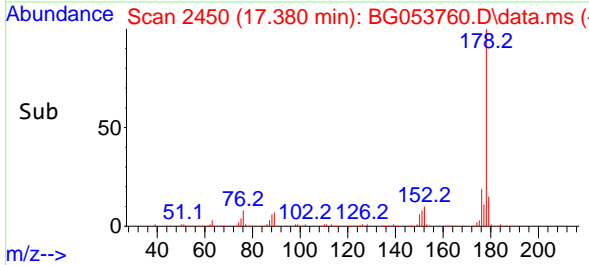
Reviewed By :Christian Giraldo 05/29/2022
 Supervised By :Jagrut Upadhyay 05/31/2022

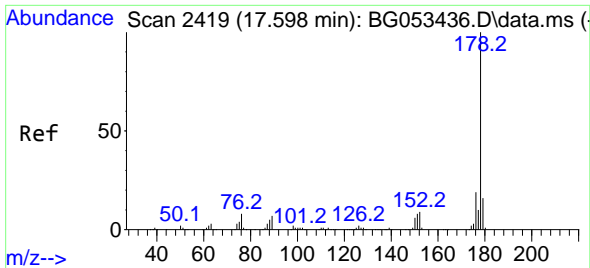


#71
 Phenanthrene
 Concen: 20.616 ng
 RT: 17.380 min Scan# 2450
 Delta R.T. -0.006 min
 Lab File: BG053760.D
 Acq: 28 May 2022 21:11



Tgt Ion:178 Resp: 341219
 Ion Ratio Lower Upper
 178 100
 176 18.6 14.1 21.1
 179 15.4 12.1 18.1





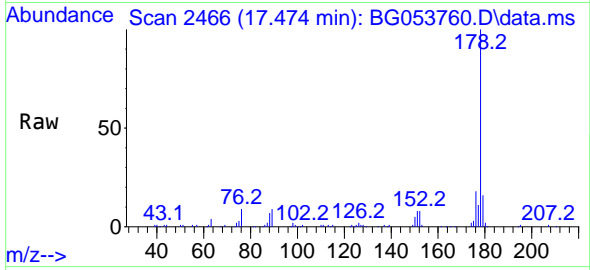
#72
 Anthracene
 Concen: 4.945 ng
 RT: 17.474 min Scan# 2419
 Delta R.T. 0.000 min
 Lab File: BG053760.D
 Acq: 28 May 2022 21:11

Instrument :

BNA_G

ClientSampleId :

TP-01-COMPDL

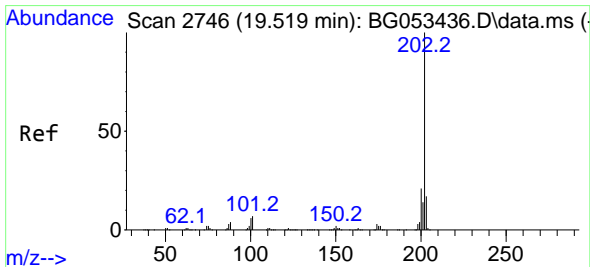
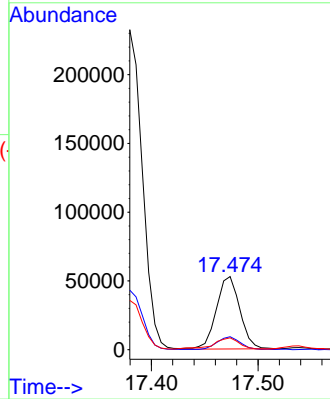
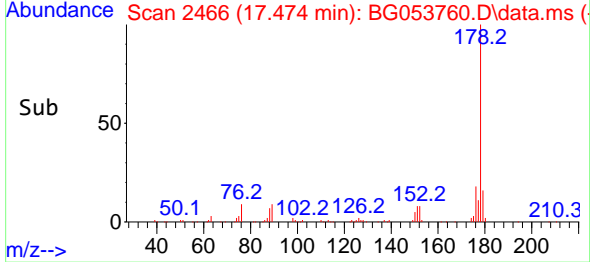


Tgt Ion:178 Resp: 8044
 Ion Ratio Lower Upper
 178 100
 176 17.8 15.2 22.8
 179 16.3 13.0 19.4

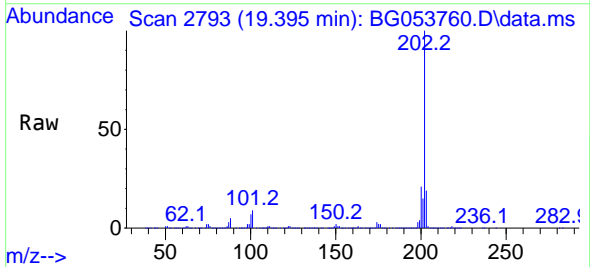
Manual Integrations

APPROVED

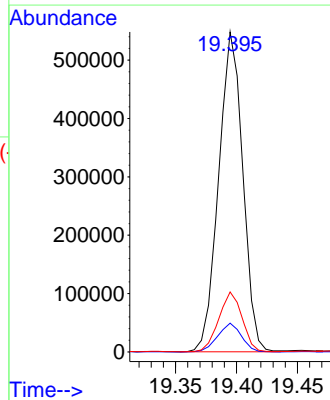
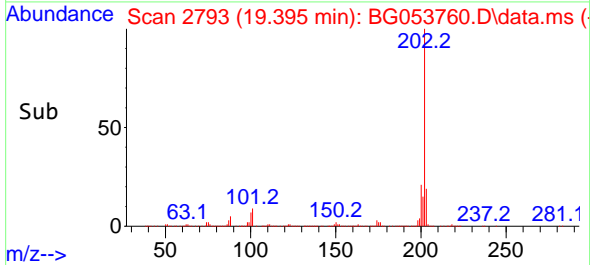
Reviewed By :Christian Giraldo 05/29/2022
 Supervised By :Jagrut Upadhyay 05/31/2022

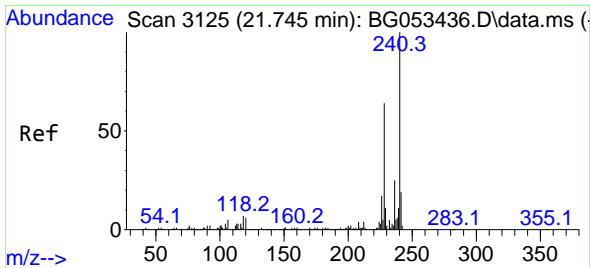


#75
 Fluoranthene
 Concen: 35.268 ng
 RT: 19.395 min Scan# 2793
 Delta R.T. 0.000 min
 Lab File: BG053760.D
 Acq: 28 May 2022 21:11



Tgt Ion:202 Resp: 755833
 Ion Ratio Lower Upper
 202 100
 101 9.0 0.0 26.9
 203 18.8 0.0 37.2





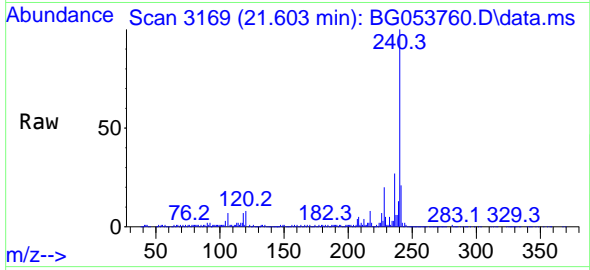
#76
 Chrysene-d12
 Concen: 20.000 ng
 RT: 21.603 min Scan# 31
 Delta R.T. -0.006 min
 Lab File: BG053760.D
 Acq: 28 May 2022 21:11

Instrument :

BNA_G

ClientSampleID :

TP-01-COMPDL

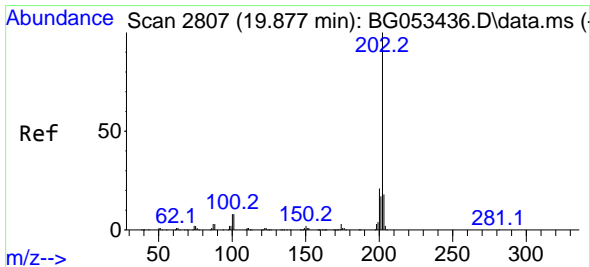
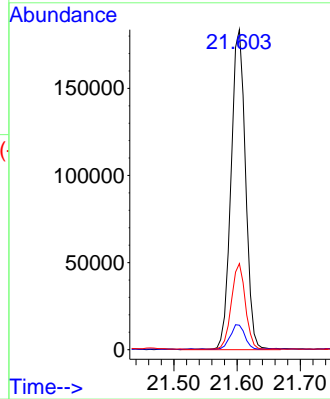
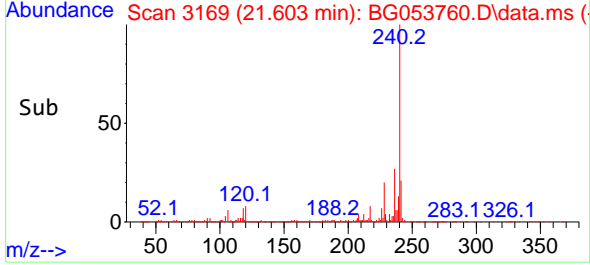


Tgt Ion:240 Resp: 29246
 Ion Ratio Lower Upper
 240 100
 120 7.7 4.6 7.0
 236 26.9 20.2 30.4

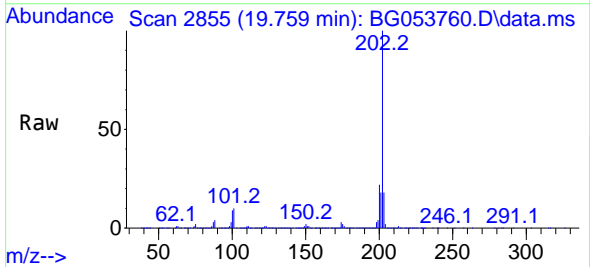
Manual Integrations

APPROVED

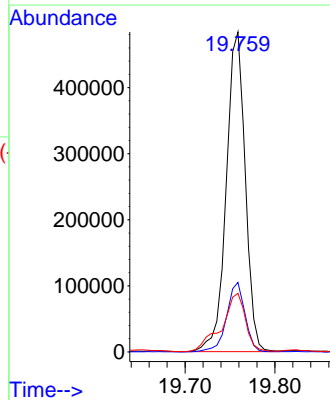
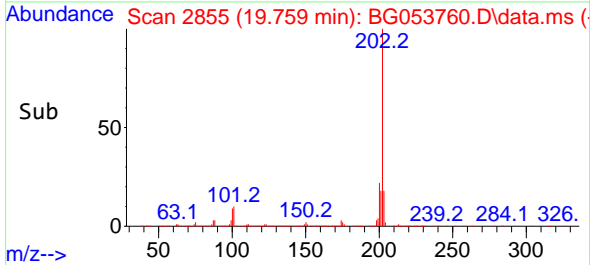
Reviewed By :Christian Giraldo 05/29/2022
 Supervised By :Jagrut Upadhyay 05/31/2022

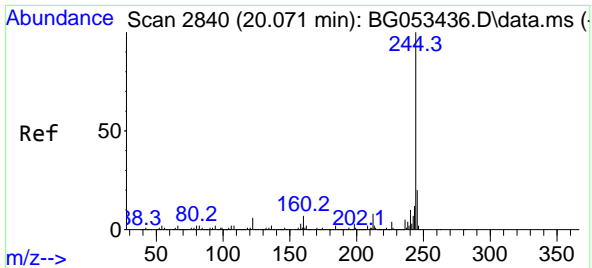


#78
 Pyrene
 Concen: 37.495 ng
 RT: 19.759 min Scan# 2855
 Delta R.T. 0.000 min
 Lab File: BG053760.D
 Acq: 28 May 2022 21:11



Tgt Ion:202 Resp: 709871
 Ion Ratio Lower Upper
 202 100
 200 21.8 16.6 24.8
 203 18.3 14.6 21.8





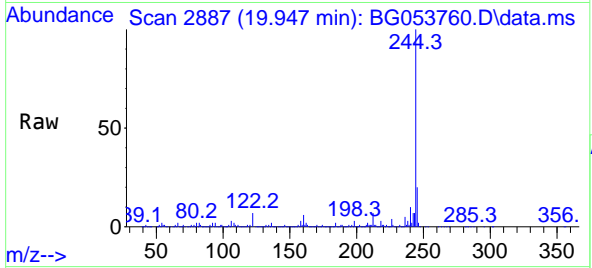
#79
 Terphenyl-d14
 Concen: 25.303 ng
 RT: 19.947 min Scan# 21
 Delta R.T. -0.006 min
 Lab File: BG053760.D
 Acq: 28 May 2022 21:11

Instrument :

BNA_G

Client Sample Id :

TP-01-COMPDL

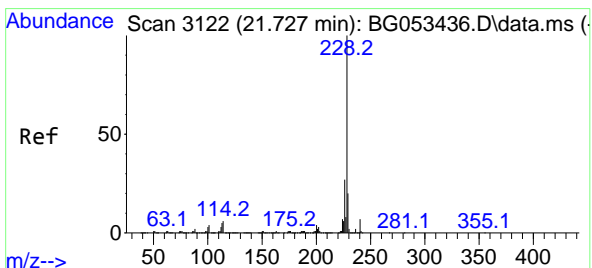
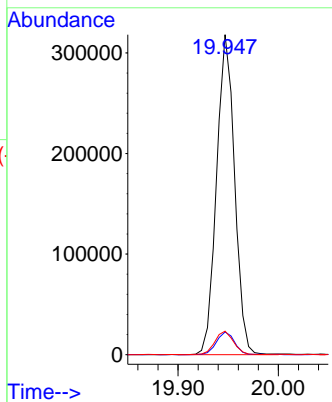
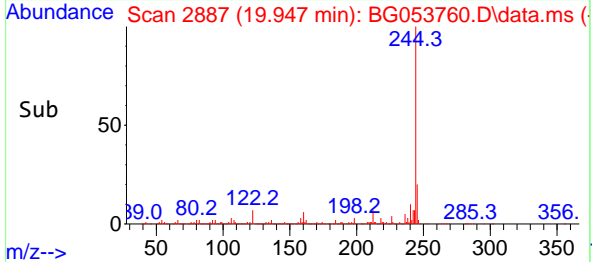


Tgt Ion:244 Resp: 397324
 Ion Ratio Lower Upper
 244 100
 212 7.1 6.5 9.7
 122 7.3 5.0 7.4

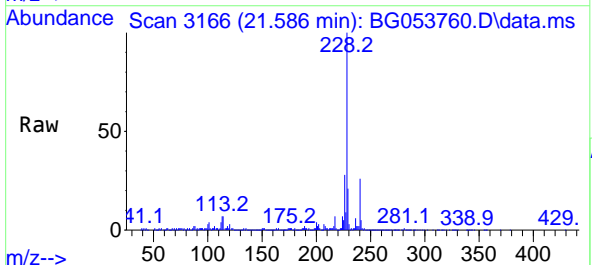
Manual Integrations

APPROVED

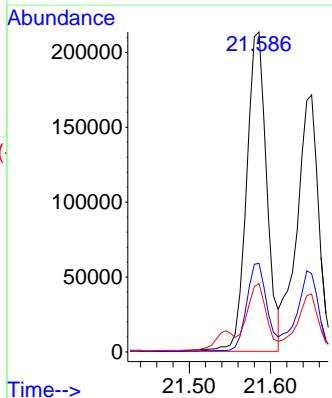
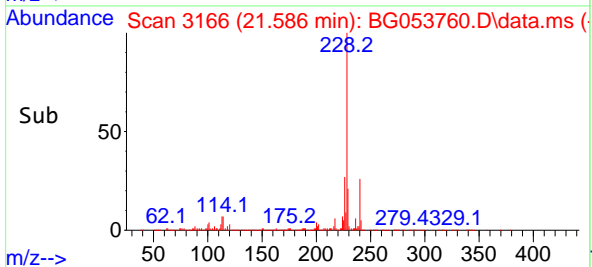
Reviewed By :Christian Giraldo 05/29/2022
 Supervised By :Jagrut Upadhyay 05/31/2022

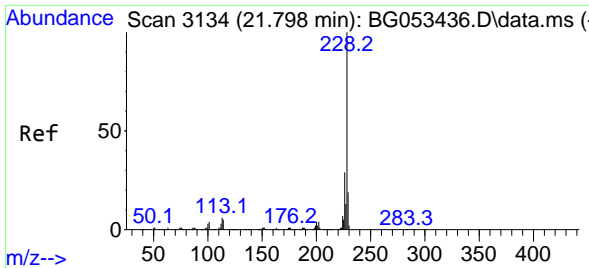


#81
 Benzo(a)anthracene
 Concen: 19.750 ng
 RT: 21.586 min Scan# 3166
 Delta R.T. 0.000 min
 Lab File: BG053760.D
 Acq: 28 May 2022 21:11



Tgt Ion:228 Resp: 368418
 Ion Ratio Lower Upper
 228 100
 226 27.7 21.6 32.4
 229 21.4 16.2 24.2





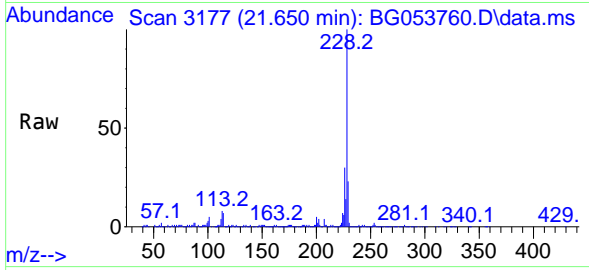
#83
 Chrysene
 Concen: 18.256 ng
 RT: 21.650 min Scan# 31
 Delta R.T. 0.000 min
 Lab File: BG053760.D
 Acq: 28 May 2022 21:11

Instrument :

BNA_G

ClientSampleId :

TP-01-COMPDL

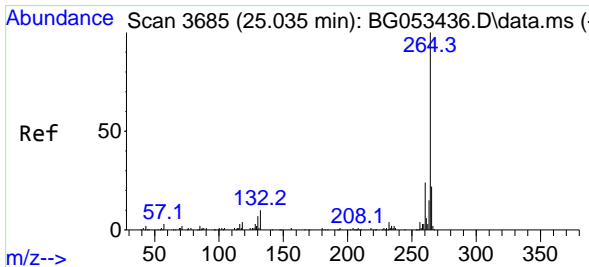
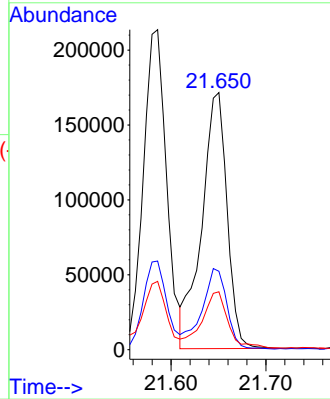
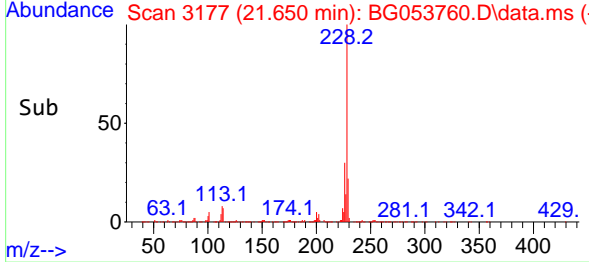


Tgt Ion:228 Resp: 31806
 Ion Ratio Lower Upper
 228 100
 226 30.5 23.4 35.2
 229 22.5 15.5 23.3

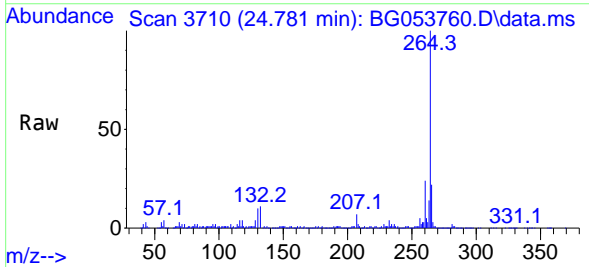
Manual Integrations

APPROVED

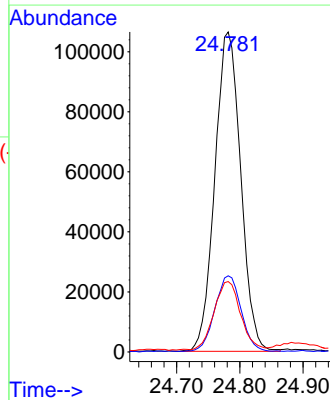
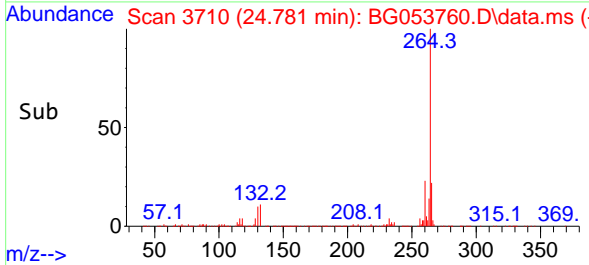
Reviewed By :Christian Giraldo 05/29/2022
 Supervised By :Jagrut Upadhyay 05/31/2022

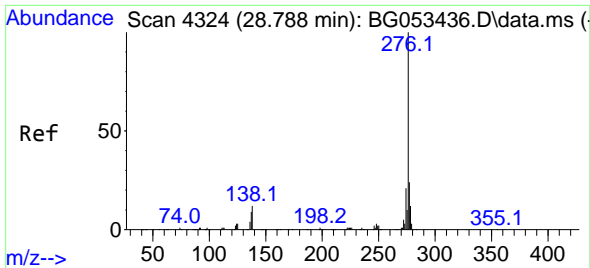


#86
 Perylene-d12
 Concen: 20.000 ng
 RT: 24.781 min Scan# 3710
 Delta R.T. -0.006 min
 Lab File: BG053760.D
 Acq: 28 May 2022 21:11



Tgt Ion:264 Resp: 302507
 Ion Ratio Lower Upper
 264 100
 260 23.8 19.0 28.6
 265 22.0 17.4 26.2





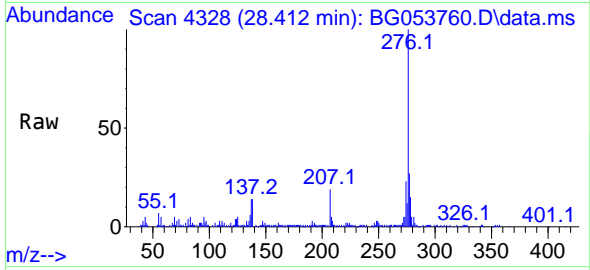
#87
 Indeno(1,2,3-cd)pyrene
 Concen: 9.211 ng
 RT: 28.412 min Scan# 41
 Delta R.T. -0.023 min
 Lab File: BG053760.D
 Acq: 28 May 2022 21:11

Instrument :

BNA_G

ClientSampleId :

TP-01-COMPDL

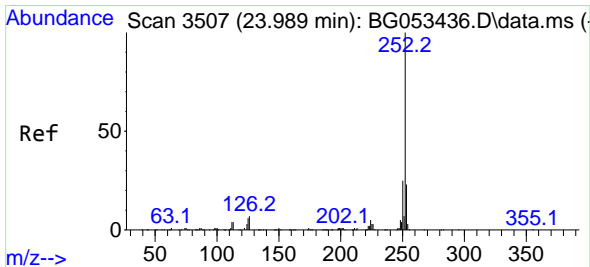
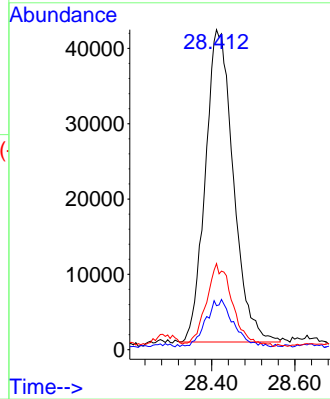
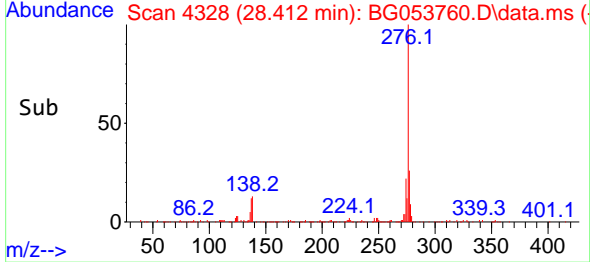


Tgt Ion:276 Resp: 194060
 Ion Ratio Lower Upper
 276 100
 138 14.5 5.0 7.4
 277 25.2 20.3 30.5

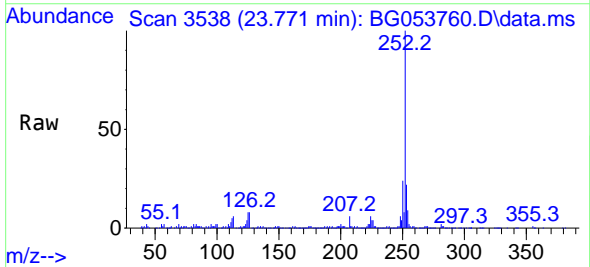
Manual Integrations

APPROVED

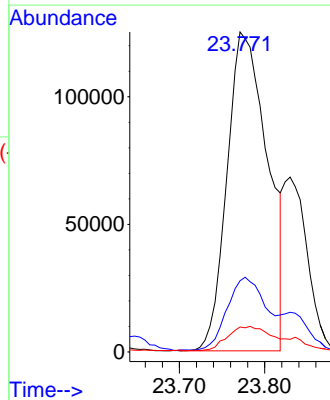
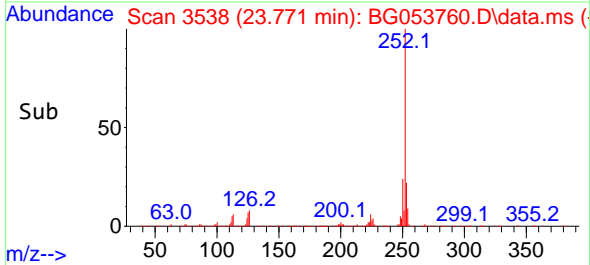
Reviewed By :Christian Giraldo 05/29/2022
 Supervised By :Jagrut Upadhyay 05/31/2022

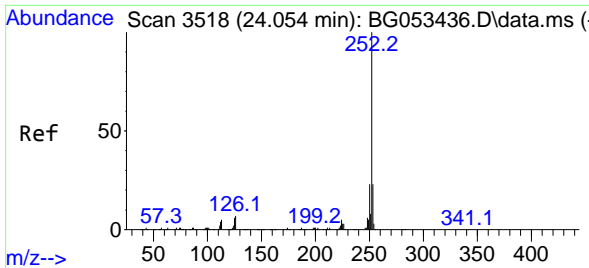


#88
 Benzo(b)fluoranthene
 Concen: 23.056 ng
 RT: 23.771 min Scan# 3538
 Delta R.T. -0.006 min
 Lab File: BG053760.D
 Acq: 28 May 2022 21:11



Tgt Ion:252 Resp: 412831
 Ion Ratio Lower Upper
 252 100
 253 22.3 18.0 27.0
 125 7.8 4.6 6.8#





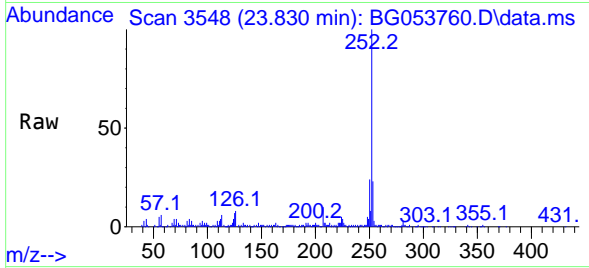
#89
 Benzo(k)fluoranthene
 Concen: 7.516 ng m
 RT: 23.830 min Scan# 31
 Delta R.T. -0.012 min
 Lab File: BG053760.D
 Acq: 28 May 2022 21:11

Instrument :

BNA_G

ClientSampleId :

TP-01-COMPDL

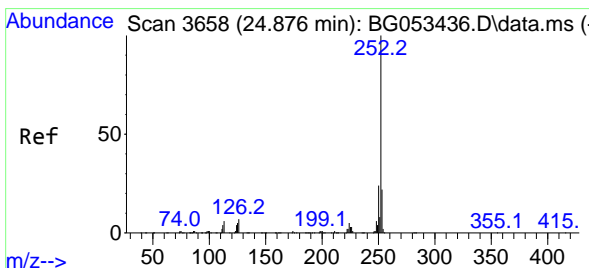
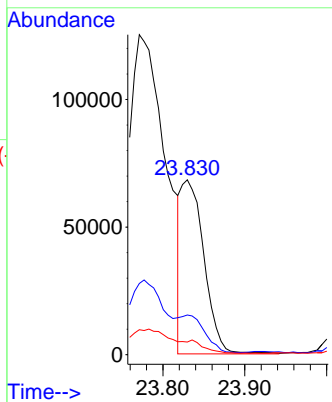
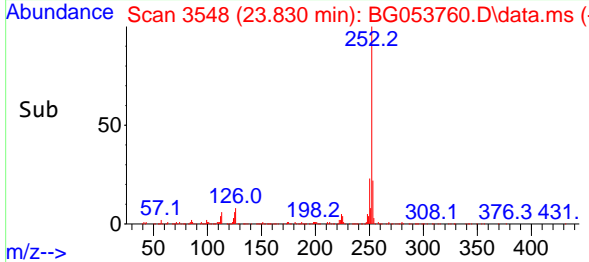


Tgt Ion:252 Resp: 132244
 Ion Ratio Lower Upper
 252 100
 253 22.7 18.4 27.6
 125 7.2 4.8 7.2

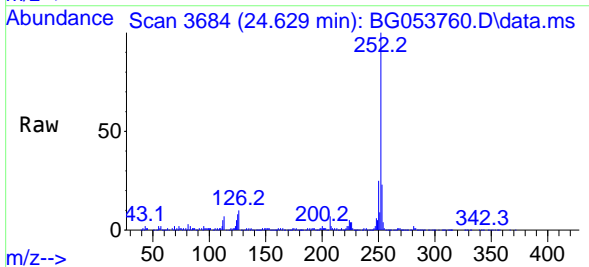
Manual Integrations

APPROVED

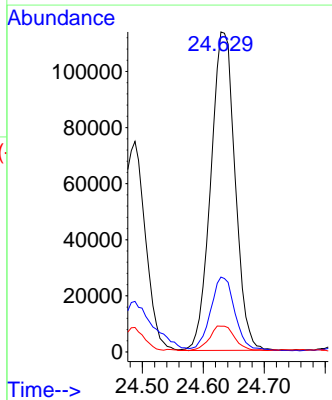
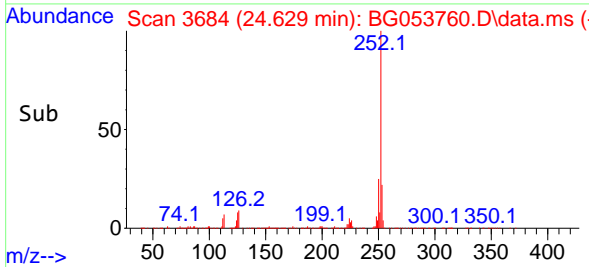
Reviewed By :Christian Giraldo 05/29/2022
 Supervised By :Jagrut Upadhyay 05/31/2022

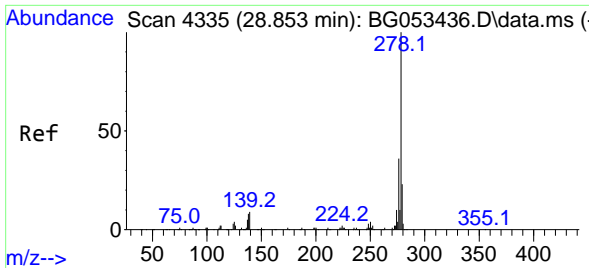


#90
 Benzo(a)pyrene
 Concen: 20.594 ng
 RT: 24.629 min Scan# 3684
 Delta R.T. -0.012 min
 Lab File: BG053760.D
 Acq: 28 May 2022 21:11



Tgt Ion:252 Resp: 313869
 Ion Ratio Lower Upper
 252 100
 253 23.4 17.8 26.8
 125 8.0 4.3 6.5





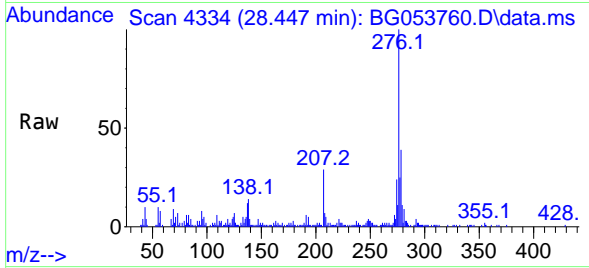
#91
 Dibenzo(a,h)anthracene
 Concen: 2.884 ng
 RT: 28.447 min Scan# 41
 Delta R.T. -0.035 min
 Lab File: BG053760.D
 Acq: 28 May 2022 21:11

Instrument :

BNA_G

ClientSampleId :

TP-01-COMPDL

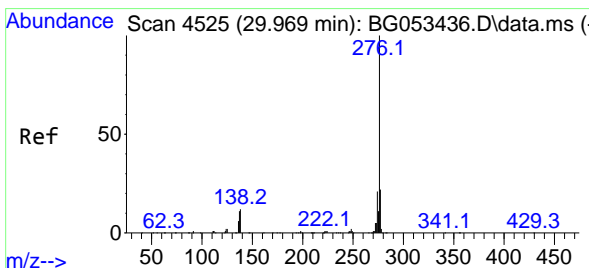
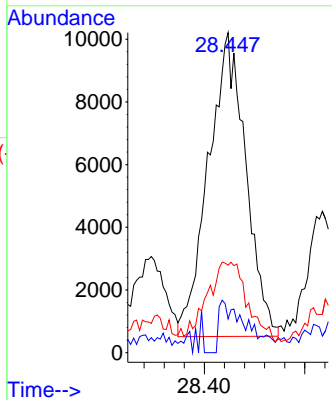
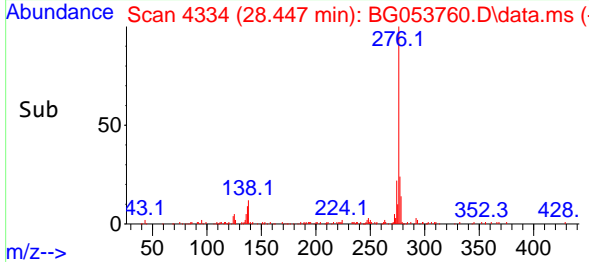


Tgt Ion: 278 Resp: 5006

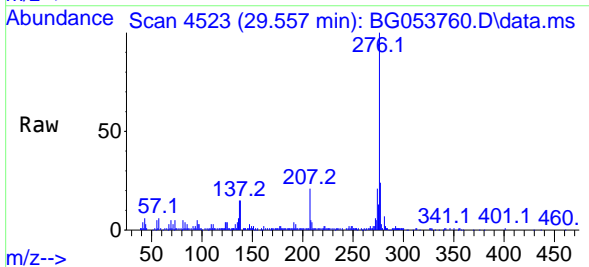
Ion	Ratio	Lower	Upper
278	100		
139	10.5	7.2	10.8
279	27.4	18.6	27.8

Manual Integrations
 APPROVED

Reviewed By : Christian Giraldo 05/29/2022
 Supervised By : Jagrut Upadhyay 05/31/2022



#92
 Benzo(g,h,i)perylene
 Concen: 10.802 ng
 RT: 29.557 min Scan# 4523
 Delta R.T. -0.012 min
 Lab File: BG053760.D
 Acq: 28 May 2022 21:11



Tgt Ion: 276 Resp: 185897

Ion	Ratio	Lower	Upper
276	100		
277	24.0	17.3	25.9
138	14.7	9.6	14.4

