

Data Path : Z:\svoasrv\HPCHEM1\BNA_G\Data\BG053124\
 Data File : BG061407.D
 Acq On : 1 Jun 2024 1:02
 Operator : MA/JU
 Sample : P2588-10
 Misc :
 ALS Vial : 18 Sample Multiplier: 1

Instrument :
 BNA_G
 ClientSampleId :
 BH5T9

Integration Parameters: LSCINT.P

Integrator: RTE
 Smoothing : OFF Filtering: 5
 Sampling : 1 Min Area: 0.1 % of largest Peak
 Start Thrs: 0.2 Max Peaks: 100
 Stop Thrs : 0 Peak Location: TOP

If leading or trailing edge < 100 prefer < Baseline drop else tangent >
 Peak separation: 5

Method : Z:\svoasrv\HPCHEM1\BNA_G\Methods\SFAM-EPA-BG052124.MA.M
 Title : SVOA CALIBRATION

Signal : TIC: BG061407.D\data.ms

peak #	R.T. min	first scan	max scan	last scan	PK TY	peak height	corr. area	corr. % max.	% of total
1	3.036	4	8	10	rBV	67249	84703	2.22%	0.169%
2	3.077	10	15	43	rVB	1273545	2313706	60.76%	4.610%
3	3.741	123	128	139	rVV3	50491	99913	2.62%	0.199%
4	3.853	142	147	155	rVV	80495	120826	3.17%	0.241%
5	7.055	687	692	707	rVB	99078	171015	4.49%	0.341%
6	7.202	711	717	724	rVB	62509	99792	2.62%	0.199%
7	7.408	746	752	758	rBV	93109	155284	4.08%	0.309%
8	7.872	824	831	837	rBV	102271	168028	4.41%	0.335%
9	8.589	947	953	960	rBV2	91583	154847	4.07%	0.309%
10	9.029	1020	1028	1034	rVB	97253	158573	4.16%	0.316%
11	9.752	1143	1151	1158	rVB	84345	147493	3.87%	0.294%
12	10.298	1238	1244	1254	rBV2	119778	209472	5.50%	0.417%
13	10.669	1296	1307	1312	rBV	130340	236057	6.20%	0.470%
14	11.403	1426	1432	1443	rBV	47175	87828	2.31%	0.175%
15	13.912	1850	1859	1865	rVB	225514	360423	9.46%	0.718%
16	14.200	1896	1908	1920	rBV2	249913	453591	11.91%	0.904%
17	14.505	1947	1960	1966	rVV	230977	376007	9.87%	0.749%
18	14.570	1966	1971	1979	rVV2	110095	174740	4.59%	0.348%
19	14.728	1989	1998	2009	rBV2	577397	1395115	36.64%	2.780%
20	14.905	2024	2028	2035	rVV	98845	149288	3.92%	0.297%
21	15.504	2121	2130	2134	rVV	331753	513555	13.49%	1.023%
22	15.557	2134	2139	2149	rVB	163310	261854	6.88%	0.522%
23	15.645	2149	2154	2158	rBV2	105443	164278	4.31%	0.327%
24	15.851	2184	2189	2197	rVB	74074	124361	3.27%	0.248%
25	15.998	2205	2214	2222	rVB	74005	150059	3.94%	0.299%
26	16.562	2307	2310	2315	rVB2	48626	78056	2.05%	0.156%
27	16.791	2341	2349	2352	rBV3	54988	104976	2.76%	0.209%
28	16.914	2365	2370	2376	rVB2	98075	157738	4.14%	0.314%
29	17.073	2393	2397	2407	rVB	85568	144390	3.79%	0.288%
30	17.261	2423	2429	2431	rBV	285213	426608	11.20%	0.850%
31	17.302	2431	2436	2441	rVV	1548467	2375829	62.39%	4.734%
32	17.361	2441	2446	2448	rVV	381396	555852	14.60%	1.108%
33	17.390	2448	2451	2456	rVB	371212	531535	13.96%	1.059%
34	17.449	2456	2461	2466	rVB3	49229	82130	2.16%	0.164%
35	17.660	2487	2497	2501	rBV2	129262	269812	7.09%	0.538%
36	17.837	2523	2527	2532	rBV4	45780	79303	2.08%	0.158%

Data Path : Z:\svoasrv\HPCHEM1\BNA_G\Data\BG053124\
 Data File : BG061407.D
 Acq On : 1 Jun 2024 1:02
 Operator : MA/JU
 Sample : P2588-10
 Misc :
 ALS Vial : 18 Sample Multiplier: 1

Instrument :
 BNA_G
 ClientSampleId :
 BH5T9

Integration Parameters: LSCINT.P

Integrator: RTE
 Smoothing : OFF Filtering: 5
 Sampling : 1 Min Area: 0.1 % of largest Peak
 Start Thrs: 0.2 Max Peaks: 100
 Stop Thrs : 0 Peak Location: TOP

If leading or trailing edge < 100 prefer < Baseline drop else tangent >
 Peak separation: 5

Method : Z:\svoasrv\HPCHEM1\BNA_G\Methods\SFAM-EPA-BG052124.MA.M
 Title : SVOA CALIBRATION

37	18.136	2568	2578	2582	rBV	284039	489857	12.86%	0.976%
38	18.183	2582	2586	2592	rVV	411242	594504	15.61%	1.185%
39	18.266	2594	2600	2605	rBV	152274	224172	5.89%	0.447%
40	18.330	2605	2611	2615	rVV2	387965	746493	19.60%	1.487%
41	18.365	2615	2617	2623	rVB	215667	264692	6.95%	0.527%
42	18.636	2658	2663	2667	rVV	223577	324402	8.52%	0.646%
43	18.683	2667	2671	2677	rVV	175147	254732	6.69%	0.508%
44	18.877	2697	2704	2709	rBV3	87032	152871	4.01%	0.305%
45	18.929	2709	2713	2716	rVV	78515	104998	2.76%	0.209%
46	18.971	2716	2720	2724	rVB	81690	108681	2.85%	0.217%
47	19.053	2725	2734	2740	rBV2	187175	428305	11.25%	0.853%
48	19.117	2742	2745	2748	rVV3	109468	184723	4.85%	0.368%
49	19.147	2748	2750	2753	rVV	78305	84876	2.23%	0.169%
50	19.200	2753	2759	2767	rVB3	158569	315847	8.29%	0.629%
51	19.323	2772	2780	2786	rBV	2598499	3808105	100.00%	7.587%
52	19.417	2792	2796	2801	rVB2	91111	126732	3.33%	0.253%
53	19.464	2801	2804	2808	rBV	65273	80960	2.13%	0.161%
54	19.523	2808	2814	2816	rBV3	55984	97263	2.55%	0.194%
55	19.558	2817	2820	2824	rVB	64897	86099	2.26%	0.172%
56	19.652	2830	2836	2838	rBV3	979814	1434809	37.68%	2.859%
57	19.687	2838	2842	2849	rVV	2276300	3295091	86.53%	6.565%
58	19.752	2849	2853	2861	rVB2	169853	280925	7.38%	0.560%
59	19.858	2865	2871	2877	rBV	179403	287772	7.56%	0.573%
60	19.922	2877	2882	2887	rVB	143257	227184	5.97%	0.453%
61	20.011	2889	2897	2903	rBV2	223413	587127	15.42%	1.170%
62	20.140	2913	2919	2921	rBV3	161132	308829	8.11%	0.615%
63	20.175	2921	2925	2930	rVB	428323	624577	16.40%	1.244%
64	20.275	2937	2942	2945	rBV	235875	318790	8.37%	0.635%
65	20.334	2945	2952	2956	rVV2	308355	596216	15.66%	1.188%
66	20.369	2956	2958	2962	rVB2	78887	88260	2.32%	0.176%
67	20.410	2962	2965	2970	rBV3	68550	95722	2.51%	0.191%
68	20.475	2971	2976	2979	rBV	155226	215988	5.67%	0.430%
69	20.516	2979	2983	2987	rVB2	160587	224811	5.90%	0.448%
70	20.633	3000	3003	3008	rVB2	74406	100457	2.64%	0.200%
71	20.727	3015	3019	3023	rBV3	126388	201519	5.29%	0.402%
72	20.886	3042	3046	3049	rBV4	51180	80728	2.12%	0.161%
73	20.927	3049	3053	3059	rVB	278326	427664	11.23%	0.852%
74	21.103	3076	3083	3087	rBV2	211031	448272	11.77%	0.893%
75	21.145	3087	3090	3093	rVV	266825	386255	10.14%	0.770%
76	21.197	3094	3099	3104	rVV3	260897	598028	15.70%	1.192%

Data Path : Z:\svoasrv\HPCHEM1\BNA_G\Data\BG053124\
 Data File : BG061407.D
 Acq On : 1 Jun 2024 1:02
 Operator : MA/JU
 Sample : P2588-10
 Misc :
 ALS Vial : 18 Sample Multiplier: 1

Instrument :
 BNA_G
 ClientSampleId :
 BH5T9

Integration Parameters: LSCINT.P

Integrator: RTE
 Smoothing : OFF Filtering: 5
 Sampling : 1 Min Area: 0.1 % of largest Peak
 Start Thrs: 0.2 Max Peaks: 100
 Stop Thrs : 0 Peak Location: TOP

If leading or trailing edge < 100 prefer < Baseline drop else tangent >
 Peak separation: 5

Method : Z:\svoasrv\HPCHEM1\BNA_G\Methods\SFAM-EPA-BG052124.MA.M
 Title : SVOA CALIBRATION

77	21.256	3104	3109	3116	rVB	306231	530948	13.94%	1.058%
78	21.403	3122	3134	3138	rBV2	169990	368333	9.67%	0.734%
79	21.497	3140	3150	3157	rVV3	1551978	3285755	86.28%	6.547%
80	21.562	3157	3161	3172	rVB	1234130	1994591	52.38%	3.974%
81	21.703	3181	3185	3192	rBV	169592	272048	7.14%	0.542%
82	21.773	3193	3197	3201	rBV3	65591	128480	3.37%	0.256%
83	21.908	3214	3220	3226	rBV2	154588	320245	8.41%	0.638%
84	21.967	3227	3230	3235	rVB5	58049	95165	2.50%	0.190%
85	22.220	3265	3273	3277	rBV	239873	457322	12.01%	0.911%
86	22.284	3280	3284	3292	rVB	138745	246873	6.48%	0.492%
87	22.478	3313	3317	3320	rBV	98870	151252	3.97%	0.301%
88	22.613	3335	3340	3346	rVB3	85206	186305	4.89%	0.371%
89	22.866	3379	3383	3387	rBV2	52654	108975	2.86%	0.217%
90	22.925	3389	3393	3405	rVB7	136897	316753	8.32%	0.631%
91	23.266	3445	3451	3460	rVB5	75337	195028	5.12%	0.389%
92	23.636	3504	3514	3520	rBV	779017	2384367	62.61%	4.751%
93	23.871	3548	3554	3562	rBV	150767	325469	8.55%	0.648%
94	24.317	3623	3630	3637	rBV	368633	977249	25.66%	1.947%
95	24.394	3638	3643	3648	rVV2	211012	534780	14.04%	1.066%
96	24.464	3648	3655	3667	rVB	678743	1758439	46.18%	3.504%
97	24.599	3670	3678	3684	rBV	219566	591840	15.54%	1.179%
98	24.670	3685	3690	3706	rVB4	169602	561636	14.75%	1.119%
99	28.107	4264	4275	4294	rVB3	254055	1223334	32.12%	2.437%
100	29.200	4452	4461	4484	rVB3	155915	729870	19.17%	1.454%

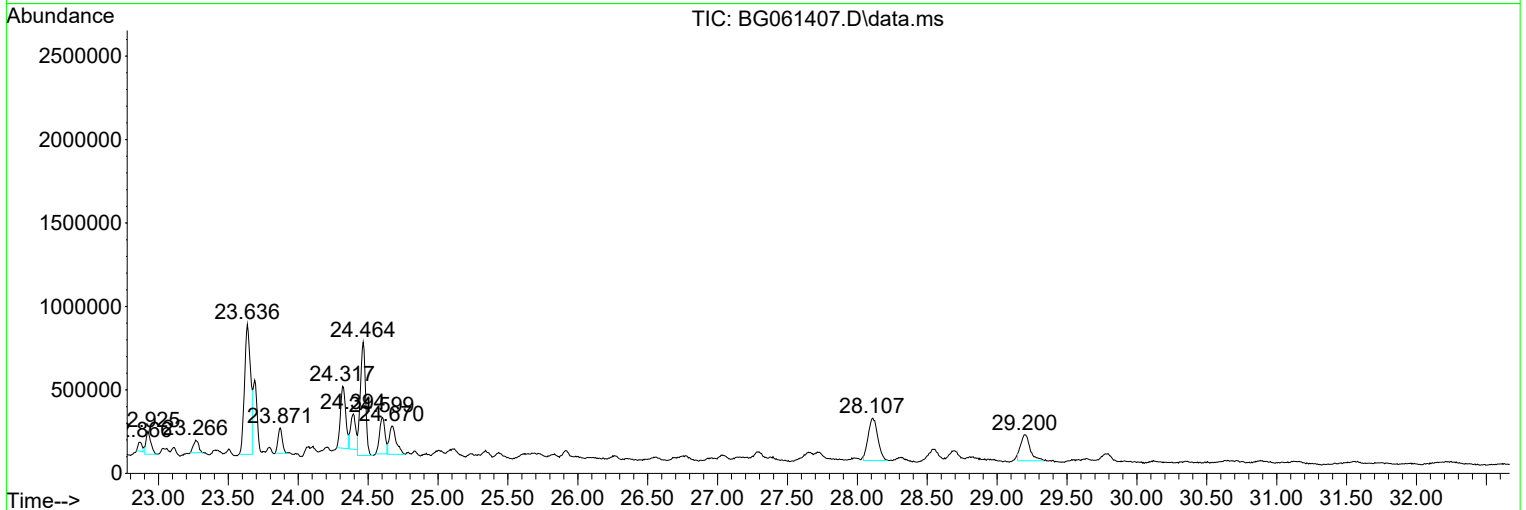
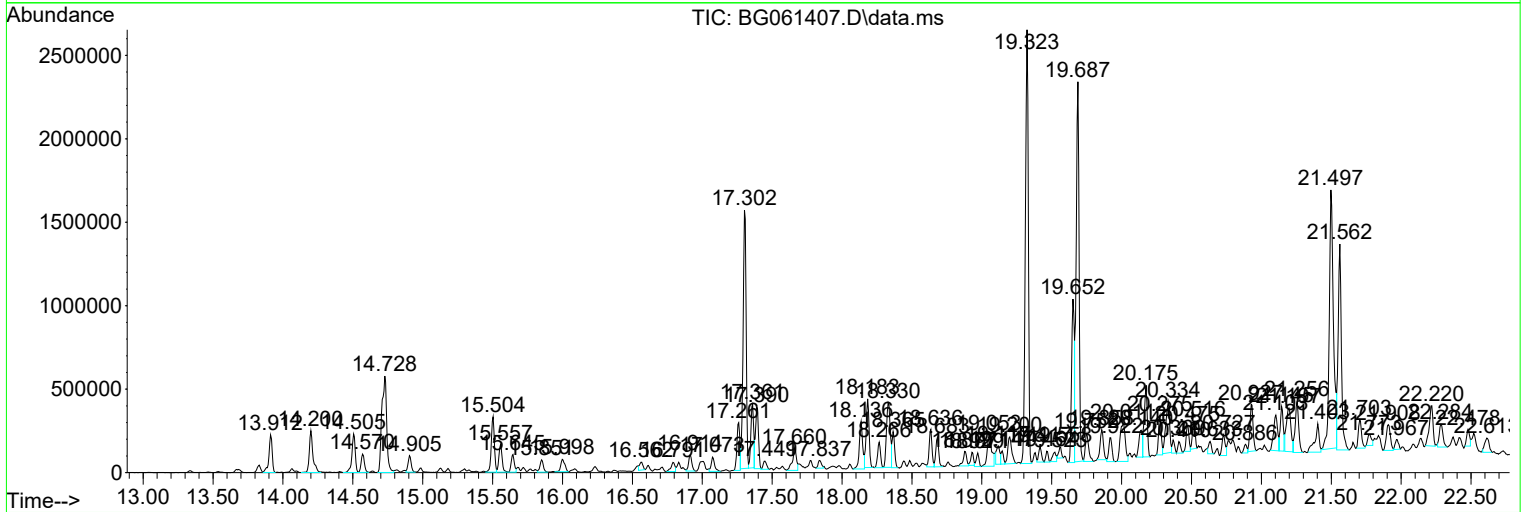
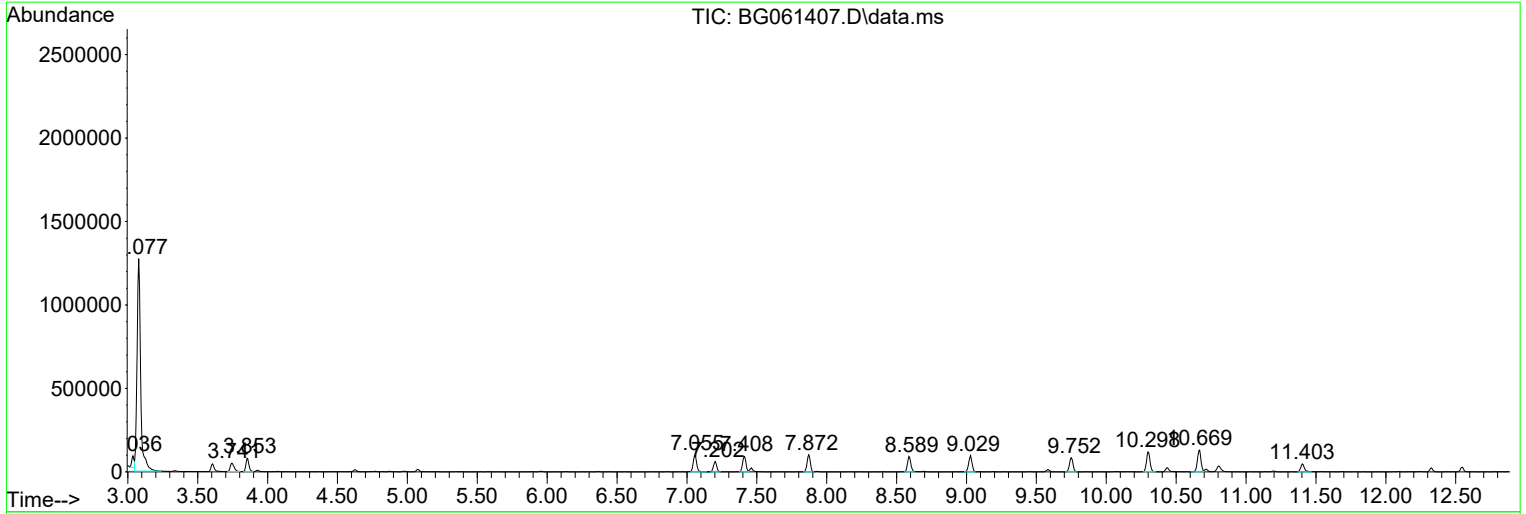
Sum of corrected areas: 50189430

Data Path : Z:\svoasrv\HPCHEM1\BNA_G\Data\BG053124\
 Data File : BG061407.D
 Acq On : 1 Jun 2024 1:02
 Operator : MA/JU
 Sample : P2588-10
 Misc :
 ALS Vial : 18 Sample Multiplier: 1

Instrument :
 BNA_G
 ClientSampleId :
 BH5T9

Quant Method : Z:\svoasrv\HPCHEM1\BNA_G\Methods\SFAM-EPA-BG052124.MA.M
 Quant Title : SVOA CALIBRATION

TIC Library : C:\DATABASE\NIST20.L
 TIC Integration Parameters: LSCINT.P



Data Path : Z:\svoasrv\HPCHEM1\BNA_G\Data\BG053124\
 Data File : BG061407.D
 Acq On : 1 Jun 2024 1:02
 Operator : MA/JU
 Sample : P2588-10
 Misc :
 ALS Vial : 18 Sample Multiplier: 1

Instrument :
 BNA_G
 ClientSampleId :
 BH5T9

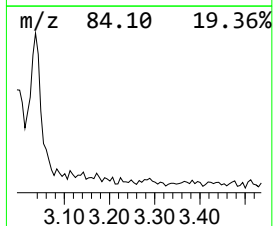
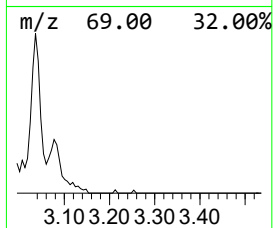
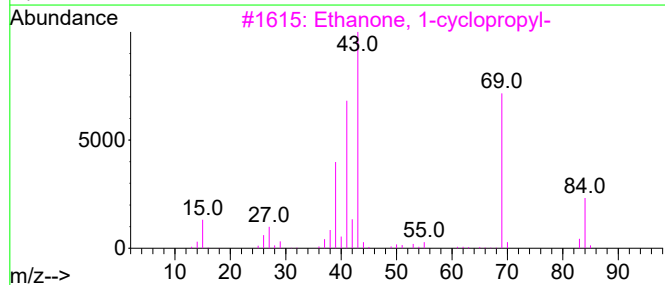
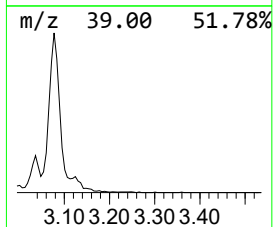
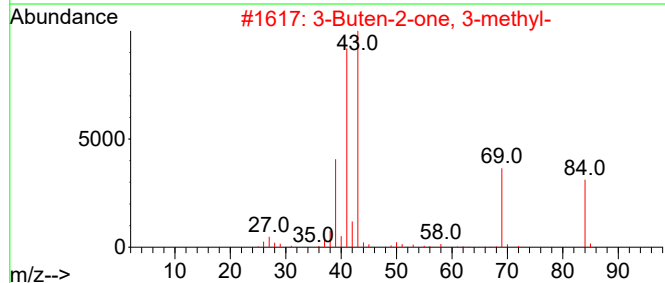
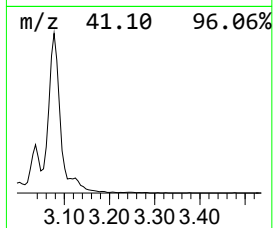
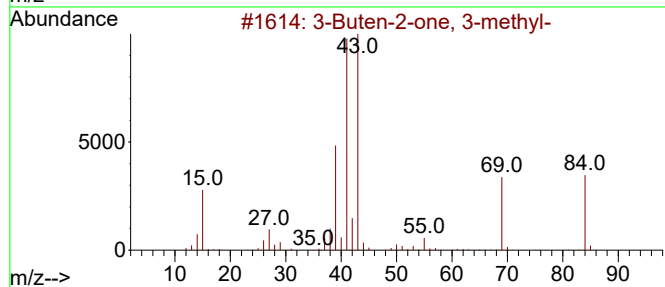
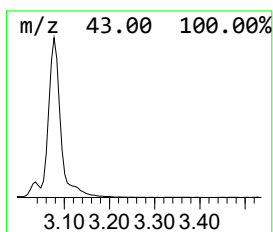
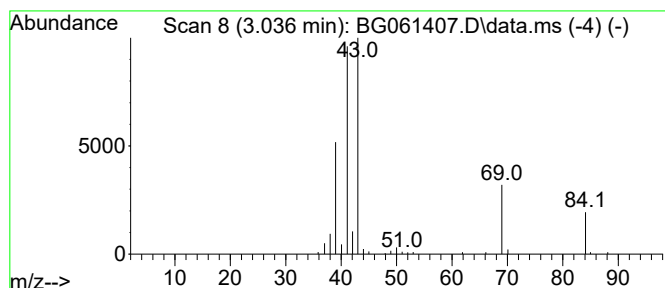
Quant Method : Z:\svoasrv\HPCHEM1\BNA_G\Methods\SFAM-EPA-BG052124.MA.M
 Quant Title : SVOA CALIBRATION

TIC Library : C:\DATABASE\NIST20.L
 TIC Integration Parameters: LSCINT.P

 Peak Number 1 3-Buten-2-one, 3-methyl- Concentration Rank 15

R.T.	EstConc	Area	Relative to ISTD	R.T.
3.036	10.08 ng/ul	84703	1,4-Dichlorobenzene-d4	7.872

Hit#	of	5	Tentative ID	MW	MolForm	CAS#	Qual
1			3-Buten-2-one, 3-methyl-	84	C5H8O	000814-78-8	72
2			3-Buten-2-one, 3-methyl-	84	C5H8O	000814-78-8	58
3			Ethanone, 1-cyclopropyl-	84	C5H8O	000765-43-5	47
4			2-Butenal, (Z)-	70	C4H6O	015798-64-8	28
5			Cyclopropane, 1,2,3-trimethyl-	84	C6H12	042984-19-0	27



Data Path : Z:\svoasrv\HPCHEM1\BNA_G\Data\BG053124\
 Data File : BG061407.D
 Acq On : 1 Jun 2024 1:02
 Operator : MA/JU
 Sample : P2588-10
 Misc :
 ALS Vial : 18 Sample Multiplier: 1

Instrument :
 BNA_G
 ClientSampleId :
 BH5T9

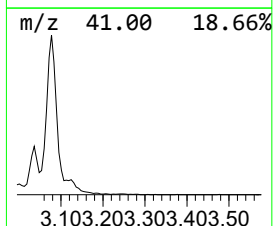
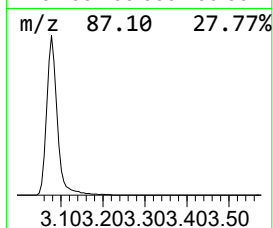
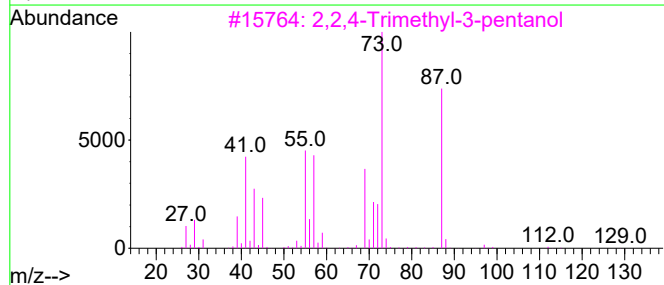
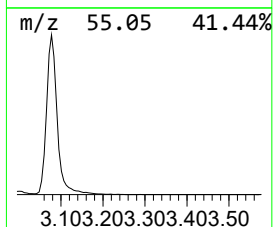
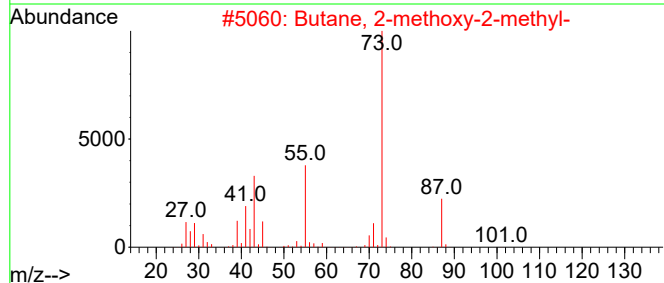
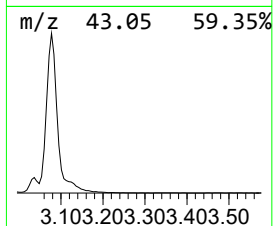
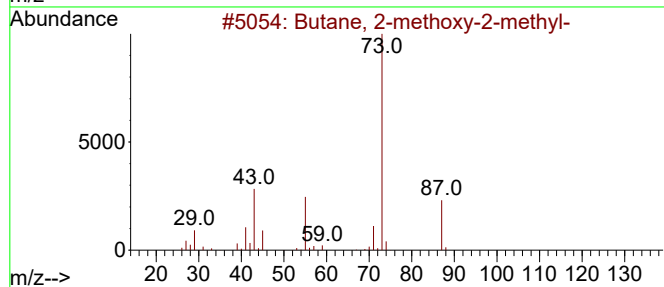
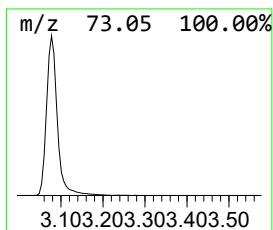
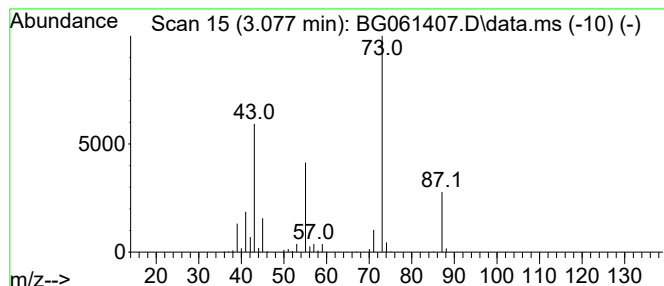
Quant Method : Z:\svoasrv\HPCHEM1\BNA_G\Methods\SFAM-EPA-BG052124.MA.M
 Quant Title : SVOA CALIBRATION

TIC Library : C:\DATABASE\NIST20.L
 TIC Integration Parameters: LSCINT.P

 Peak Number 2 Butane, 2-methoxy-2-methyl- Concentration Rank 1

R.T.	EstConc	Area	Relative to ISTD	R.T.
3.077	275.39 ng/ul	2313710	1,4-Dichlorobenzene-d4	7.872

Hit#	of	5	Tentative ID	MW	MolForm	CAS#	Qual
1			Butane, 2-methoxy-2-methyl-	102	C6H14O	000994-05-8	83
2			Butane, 2-methoxy-2-methyl-	102	C6H14O	000994-05-8	78
3			2,2,4-Trimethyl-3-pentanol	130	C8H18O	005162-48-1	38
4			3-Pentanol, 3-methyl-	102	C6H14O	000077-74-7	33
5			3-Pentanol, 3-methyl-	102	C6H14O	000077-74-7	28



Data Path : Z:\svoasrv\HPCHEM1\BNA_G\Data\BG053124\
 Data File : BG061407.D
 Acq On : 1 Jun 2024 1:02
 Operator : MA/JU
 Sample : P2588-10
 Misc :
 ALS Vial : 18 Sample Multiplier: 1

Instrument :
 BNA_G
 ClientSampleId :
 BH5T9

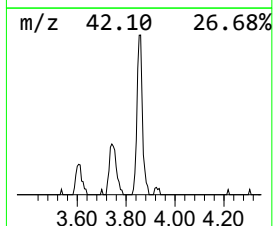
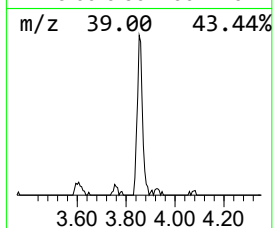
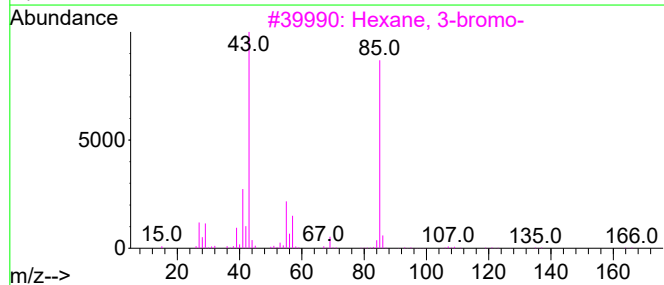
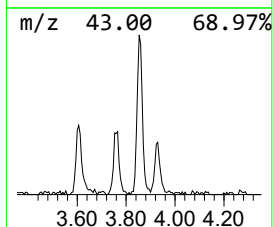
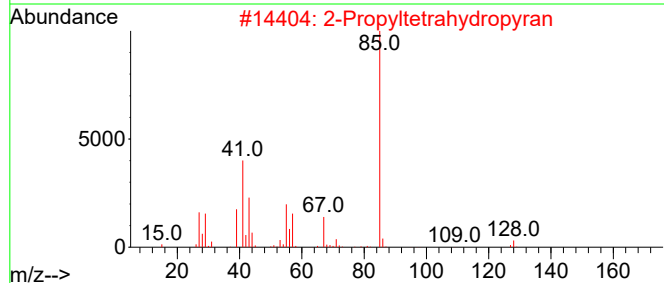
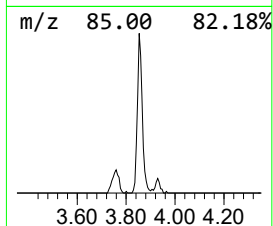
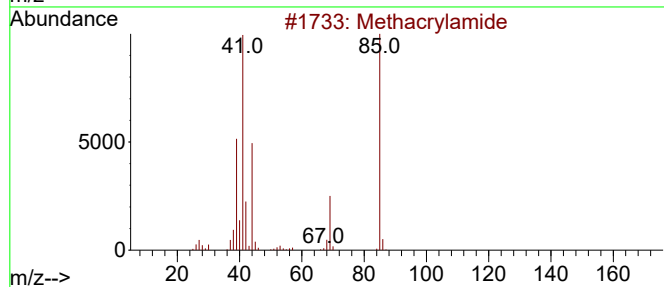
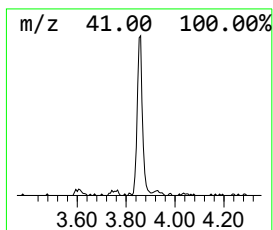
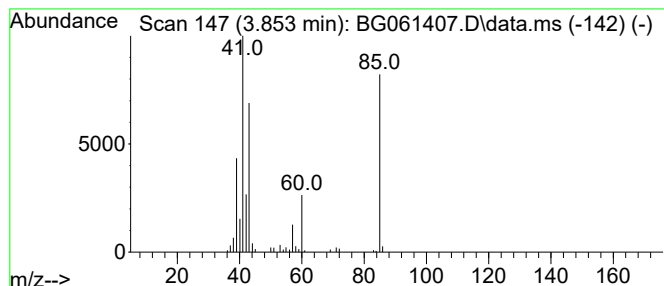
Quant Method : Z:\svoasrv\HPCHEM1\BNA_G\Methods\SFAM-EPA-BG052124.MA.M
 Quant Title : SVOA CALIBRATION

TIC Library : C:\DATABASE\NIST20.L
 TIC Integration Parameters: LSCINT.P

 Peak Number 3 unknown-01 Concentration Rank 10

R.T.	EstConc	Area	Relative to ISTD	R.T.
3.853	14.38 ng/ul	120826	1,4-Dichlorobenzene-d4	7.872

Hit#	of	5	Tentative ID	MW	MolForm	CAS#	Qual
1			Methacrylamide	85	C4H7NO	000079-39-0	36
2			2-Propyltetrahydropyran	128	C8H16O	003857-17-8	23
3			Hexane, 3-bromo-	164	C6H13Br	003377-87-5	23
4			2-Pyrrolidinone	85	C4H7NO	000616-45-5	9
5			Methacrylamide	85	C4H7NO	000079-39-0	9



Data Path : Z:\svoasrv\HPCHEM1\BNA_G\Data\BG05124\
 Data File : BG061407.D
 Acq On : 1 Jun 2024 1:02
 Operator : MA/JU
 Sample : P2588-10
 Misc :
 ALS Vial : 18 Sample Multiplier: 1

Instrument :
 BNA_G
 ClientSampleId :
 BH5T9

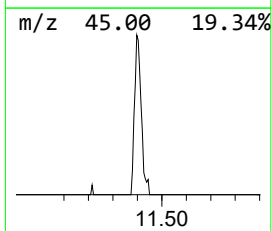
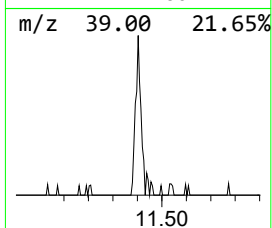
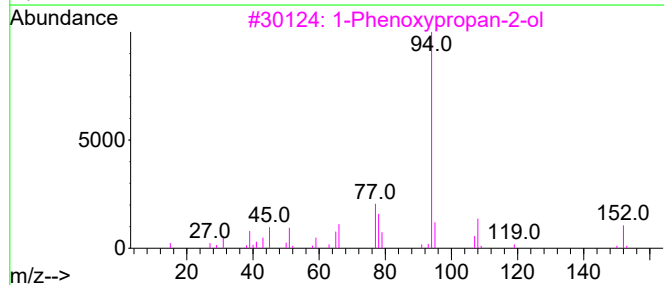
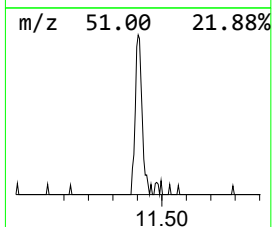
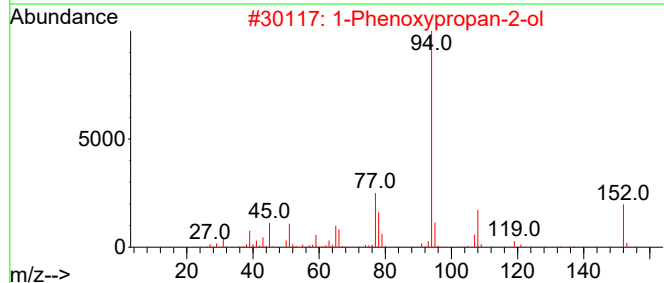
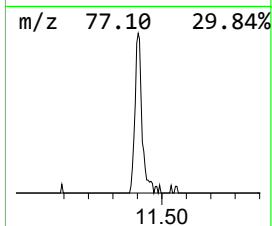
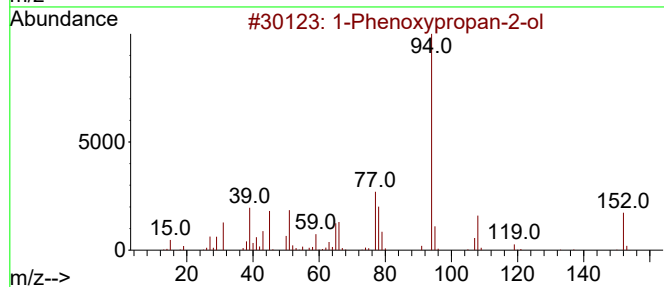
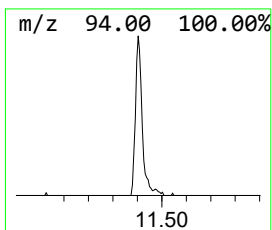
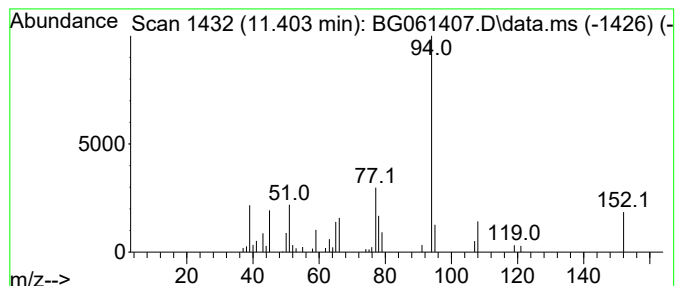
Quant Method : Z:\svoasrv\HPCHEM1\BNA_G\Methods\SFAM-EPA-BG052124.MA.M
 Quant Title : SVOA CALIBRATION

TIC Library : C:\DATABASE\NIST20.L
 TIC Integration Parameters: LSCINT.P

 Peak Number 4 1-Phenoxypropan-2-ol Concentration Rank 17

R.T.	EstConc	Area	Relative to ISTD	R.T.
11.403	7.44 ng/ul	87828	Naphthalene-d8	10.663

Hit#	of	5	Tentative ID	MW	MolForm	CAS#	Qual
1			1-Phenoxypropan-2-ol	152	C9H12O2	000770-35-4	96
2			1-Phenoxypropan-2-ol	152	C9H12O2	000770-35-4	94
3			1-Phenoxypropan-2-ol	152	C9H12O2	000770-35-4	94
4			1-Phenoxypropan-2-ol	152	C9H12O2	000770-35-4	87
5			1-Propanol, 3-phenoxy-	152	C9H12O2	006180-61-6	87



Data Path : Z:\svoasrv\HPCHEM1\BNA_G\Data\BG053124\
 Data File : BG061407.D
 Acq On : 1 Jun 2024 1:02
 Operator : MA/JU
 Sample : P2588-10
 Misc :
 ALS Vial : 18 Sample Multiplier: 1

Instrument :
 BNA_G
 ClientSampleId :
 BH5T9

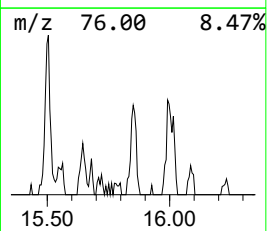
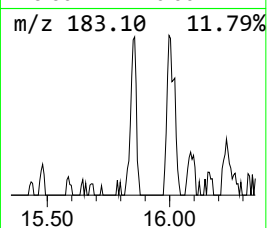
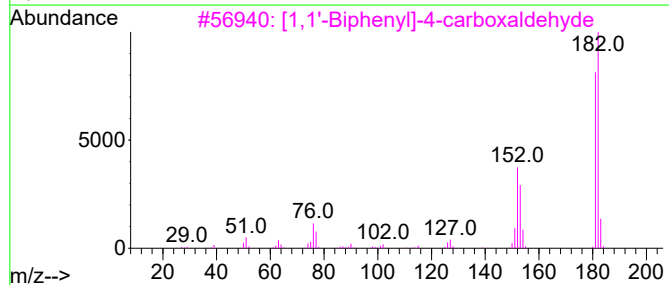
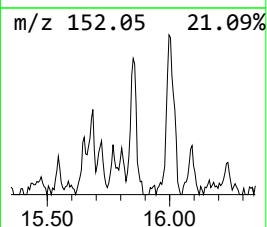
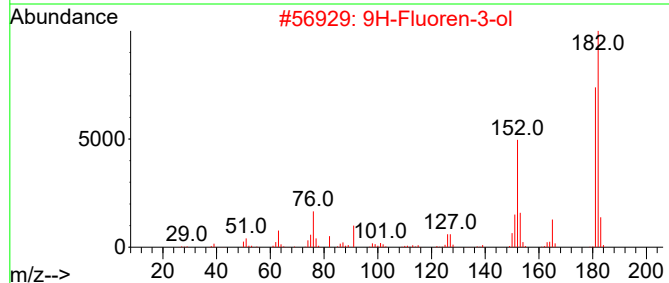
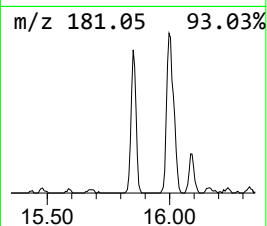
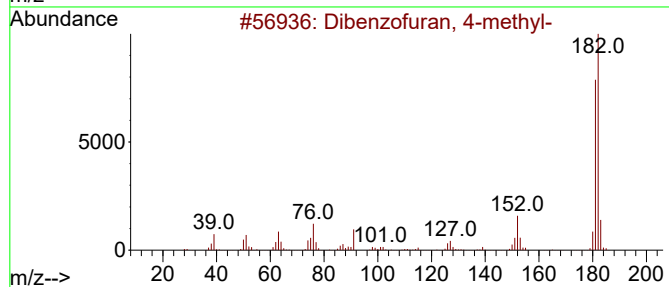
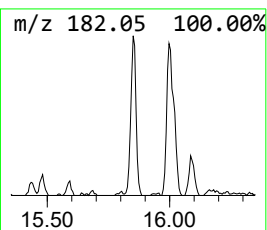
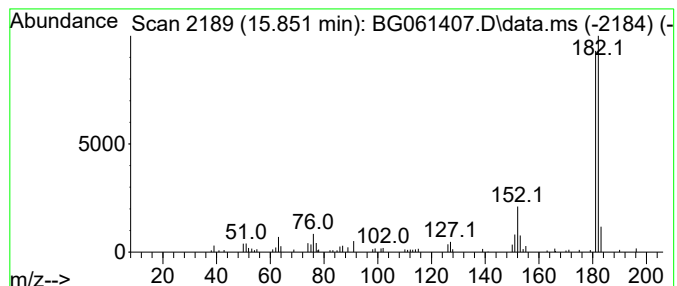
Quant Method : Z:\svoasrv\HPCHEM1\BNA_G\Methods\SFAM-EPA-BG052124.MA.M
 Quant Title : SVOA CALIBRATION

TIC Library : C:\DATABASE\NIST20.L
 TIC Integration Parameters: LSCINT.P

 Peak Number 5 Dibenzofuran, 4-methyl- Concentration Rank 22

R.T.	EstConc	Area	Relative to ISTD	R.T.
15.851	6.61 ng/ul	124361	Acenaphthene-d10	14.505

Hit#	of	5	Tentative ID	MW	MolForm	CAS#	Qual
1			Dibenzofuran, 4-methyl-	182	C13H10O	007320-53-8	87
2			9H-Fluoren-3-ol	182	C13H10O	006344-67-8	86
3			[1,1'-Biphenyl]-4-carboxaldehyde	182	C13H10O	003218-36-8	80
4			Pyrido[2,3-b]indole, 6-methyl-	182	C12H10N2	108349-67-3	72
5			Norharmane, N-methyl-	182	C12H10N2	1010374-78-6	64



Data Path : Z:\svoasrv\HPCHEM1\BNA_G\Data\BG053124\
 Data File : BG061407.D
 Acq On : 1 Jun 2024 1:02
 Operator : MA/JU
 Sample : P2588-10
 Misc :
 ALS Vial : 18 Sample Multiplier: 1

Instrument :
 BNA_G
 ClientSampleId :
 BH5T9

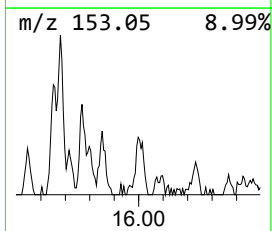
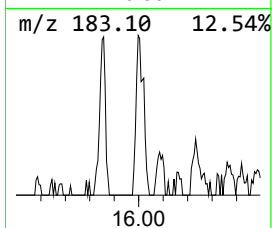
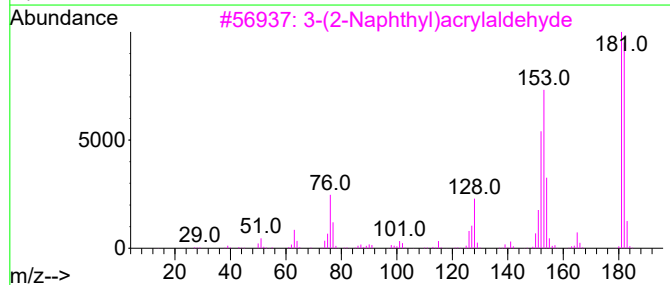
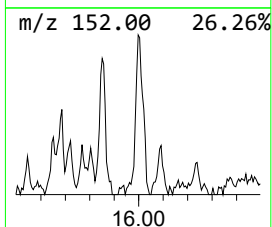
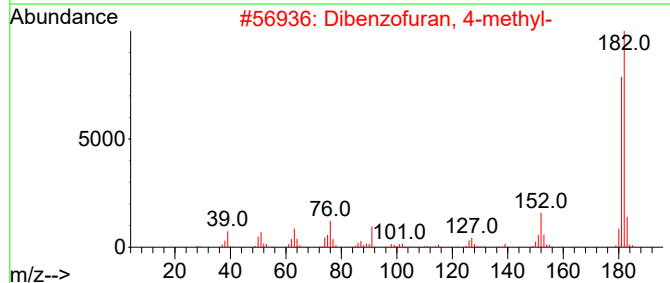
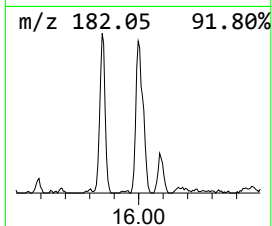
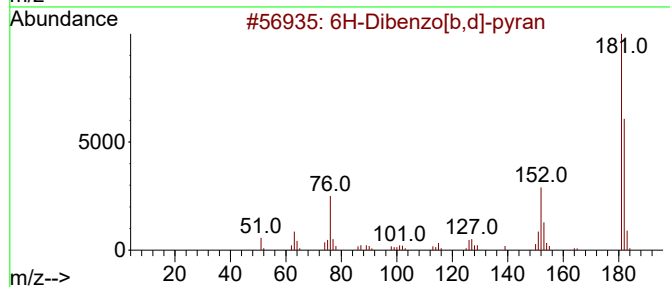
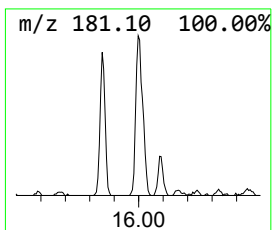
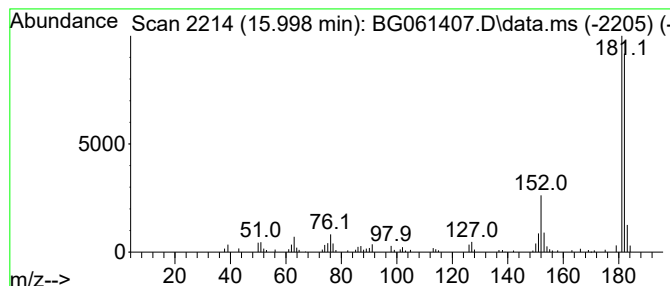
Quant Method : Z:\svoasrv\HPCHEM1\BNA_G\Methods\SFAM-EPA-BG052124.MA.M
 Quant Title : SVOA CALIBRATION

TIC Library : C:\DATABASE\NIST20.L
 TIC Integration Parameters: LSCINT.P

 Peak Number 6 6H-Dibenzo[b,d]-pyran Concentration Rank 20

R.T.	EstConc	Area	Relative to ISTD	R.T.
15.998	7.03 ng/ul	150059	Phenanthrene-d10	17.261

Hit#	of	5	Tentative ID	MW	MolForm	CAS#	Qual
1			6H-Dibenzo[b,d]-pyran	182	C13H100	000229-95-8	94
2			Dibenzofuran, 4-methyl-	182	C13H100	007320-53-8	91
3			3-(2-Naphthyl)acrylaldehyde	182	C13H100	020884-05-3	91
4			2,4,6-Cycloheptatrien-1-one, 2-p...	182	C13H100	014562-09-5	90
5			9H-Fluoren-9-ol	182	C13H100	001689-64-1	90



Data Path : Z:\svoasrv\HPCHEM1\BNA_G\Data\BG053124\
 Data File : BG061407.D
 Acq On : 1 Jun 2024 1:02
 Operator : MA/JU
 Sample : P2588-10
 Misc :
 ALS Vial : 18 Sample Multiplier: 1

Instrument :
 BNA_G
 ClientSampleId :
 BH5T9

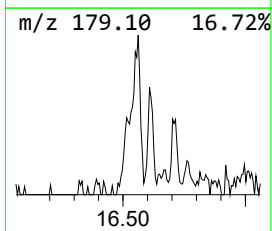
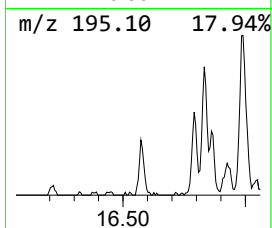
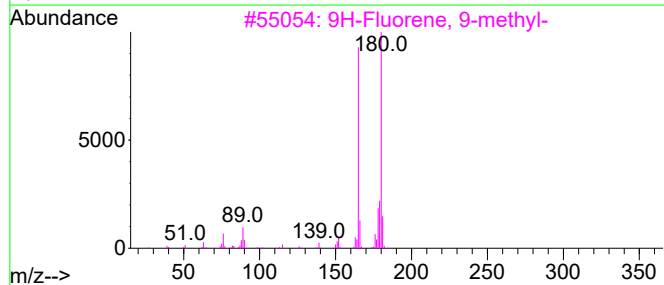
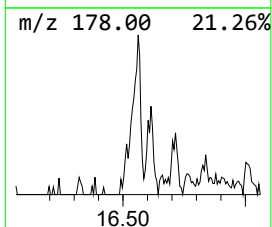
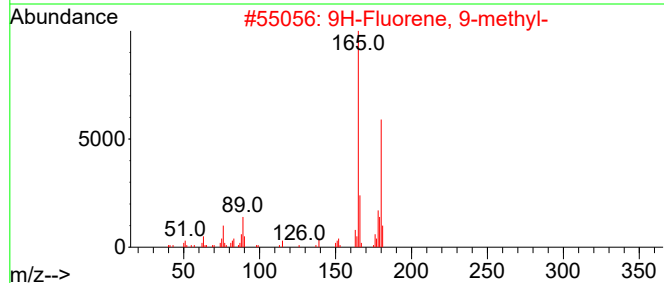
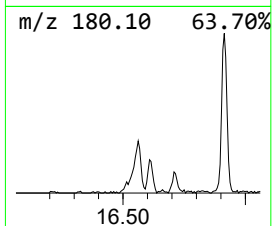
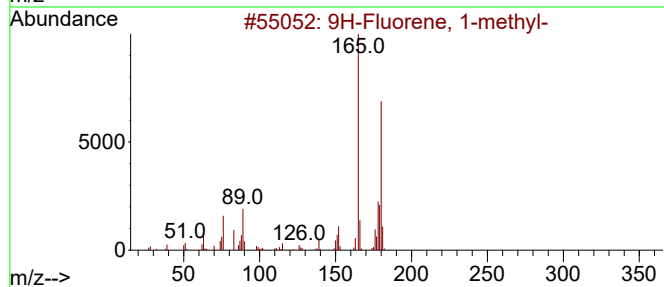
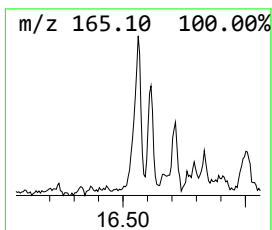
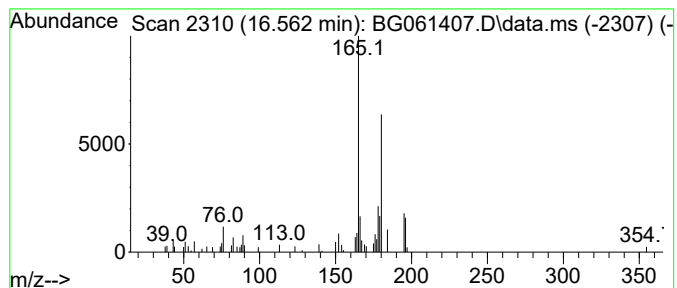
Quant Method : Z:\svoasrv\HPCHEM1\BNA_G\Methods\SFAM-EPA-BG052124.MA.M
 Quant Title : SVOA CALIBRATION

TIC Library : C:\DATABASE\NIST20.L
 TIC Integration Parameters: LSCINT.P

 Peak Number 7 9H-Fluorene, 1-methyl- Concentration Rank 31

R.T.	EstConc	Area	Relative to ISTD	R.T.
16.562	3.66 ng/ul	78056	Phenanthrene-d10	17.261

Hit#	of	5	Tentative ID	MW	MolForm	CAS#	Qual
1			9H-Fluorene, 1-methyl-	180	C14H12	001730-37-6	68
2			9H-Fluorene, 9-methyl-	180	C14H12	002523-37-7	68
3			9H-Fluorene, 9-methyl-	180	C14H12	002523-37-7	68
4			9H-Fluorene, 9-methyl-	180	C14H12	002523-37-7	68
5			9H-Fluorene, 3-methyl-	180	C14H12	002523-39-9	64



Data Path : Z:\svoasrv\HPCHEM1\BNA_G\Data\BG053124\
 Data File : BG061407.D
 Acq On : 1 Jun 2024 1:02
 Operator : MA/JU
 Sample : P2588-10
 Misc :
 ALS Vial : 18 Sample Multiplier: 1

Instrument :
 BNA_G
 ClientSampleId :
 BH5T9

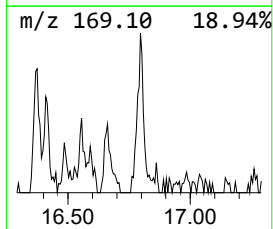
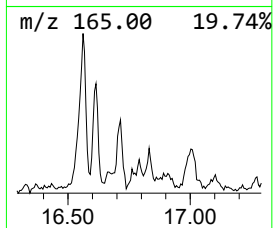
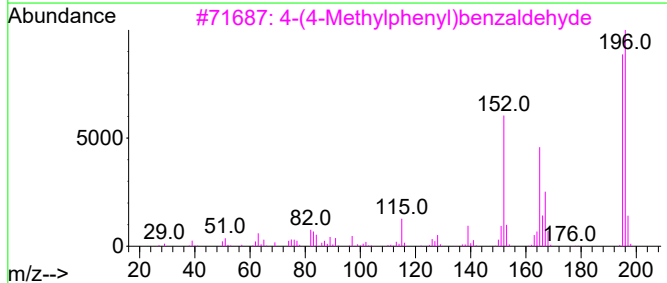
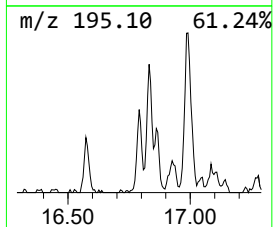
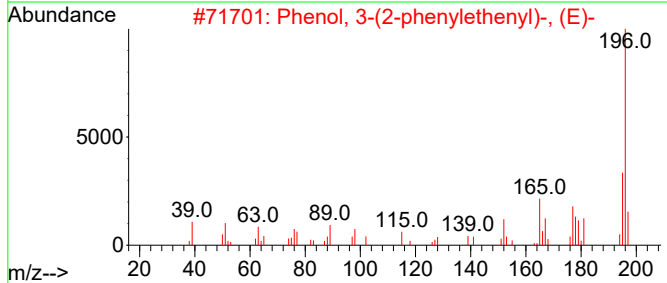
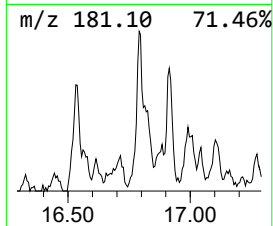
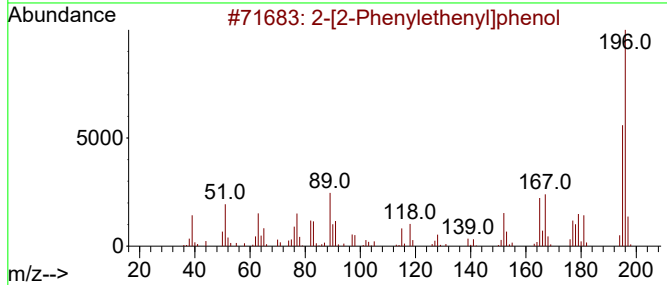
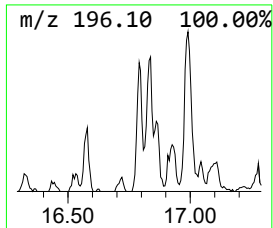
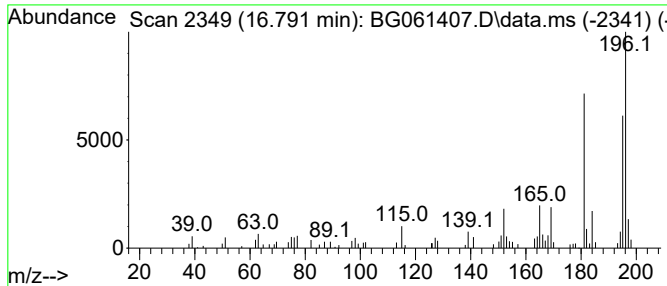
Quant Method : Z:\svoasrv\HPCHEM1\BNA_G\Methods\SFAM-EPA-BG052124.MA.M
 Quant Title : SVOA CALIBRATION

TIC Library : C:\DATABASE\NIST20.L
 TIC Integration Parameters: LSCINT.P

 Peak Number 8 2-[2-Phenylethenyl]phenol Concentration Rank 26

R.T.	EstConc	Area	Relative to ISTD	R.T.
16.791	4.92 ng/ul	104976	Phenanthrene-d10	17.261

Hit#	of	5	Tentative ID	MW	MolForm	CAS#	Qual
1			2-[2-Phenylethenyl]phenol	196	C14H12O	042224-48-6	76
2			Phenol, 3-(2-phenylethenyl)-, (E)-	196	C14H12O	017861-18-6	64
3			4-(4-Methylphenyl)benzaldehyde	196	C14H12O	036393-42-7	58
4			8-Dimethylaminonaphthalene-1-car...	196	C13H12N2	128644-69-9	58
5			Phenol, 4-(2-phenylethenyl)-	196	C14H12O	003839-46-1	52



Data Path : Z:\svoasrv\HPCHEM1\BNA_G\Data\BG053124\
 Data File : BG061407.D
 Acq On : 1 Jun 2024 1:02
 Operator : MA/JU
 Sample : P2588-10
 Misc :
 ALS Vial : 18 Sample Multiplier: 1

Instrument :
 BNA_G
 ClientSampleId :
 BH5T9

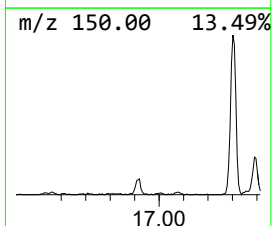
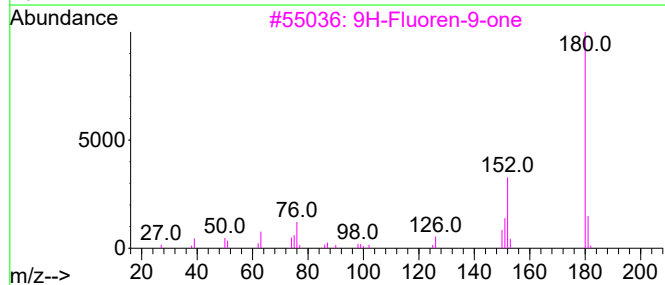
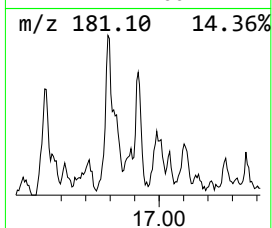
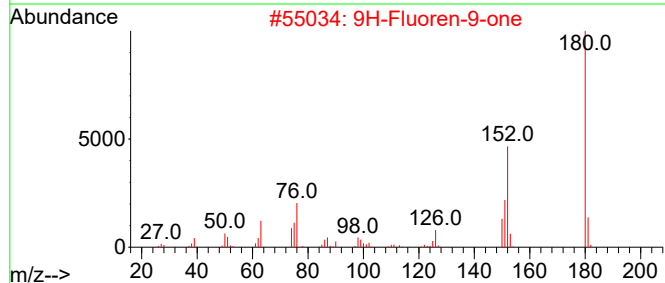
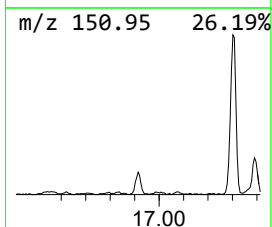
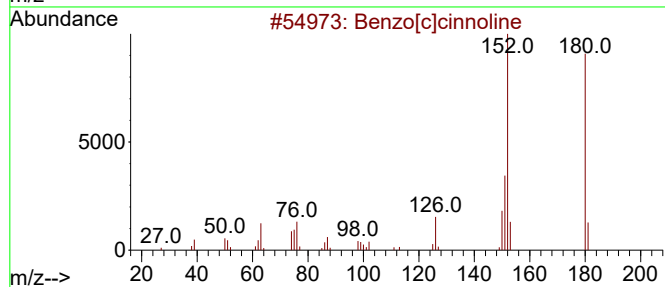
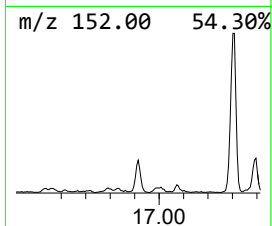
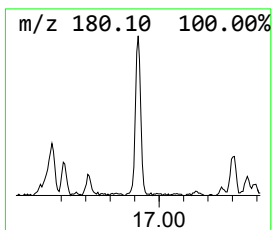
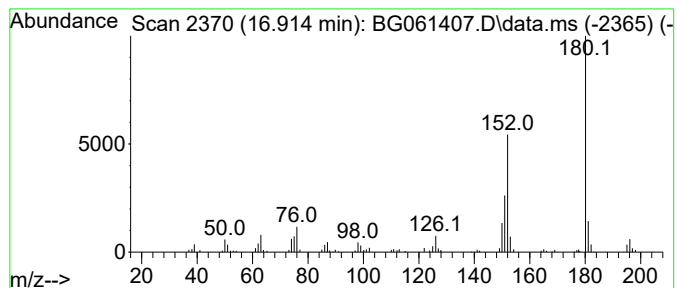
Quant Method : Z:\svoasrv\HPCHEM1\BNA_G\Methods\SFAM-EPA-BG052124.MA.M
 Quant Title : SVOA CALIBRATION

TIC Library : C:\DATABASE\NIST20.L
 TIC Integration Parameters: LSCINT.P

 Peak Number 9 Benzo[c]cinnoline Concentration Rank 18

R.T.	EstConc	Area	Relative to ISTD	R.T.
16.914	7.39 ng/ul	157738	Phenanthrene-d10	17.261

Hit#	of	5	Tentative ID	MW	MolForm	CAS#	Qual
1			Benzo[c]cinnoline	180	C12H8N2	000230-17-1	93
2			9H-Fluoren-9-one	180	C13H8O	000486-25-9	91
3			9H-Fluoren-9-one	180	C13H8O	000486-25-9	90
4			9H-Fluoren-9-one	180	C13H8O	000486-25-9	90
5			Benzo[c]cinnoline	180	C12H8N2	000230-17-1	90



Data Path : Z:\svoasrv\HPCHEM1\BNA_G\Data\BG053124\
 Data File : BG061407.D
 Acq On : 1 Jun 2024 1:02
 Operator : MA/JU
 Sample : P2588-10
 Misc :
 ALS Vial : 18 Sample Multiplier: 1

Instrument :
 BNA_G
 ClientSampleId :
 BH5T9

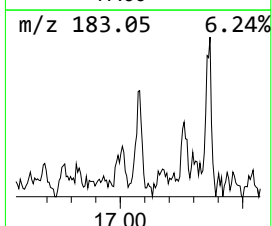
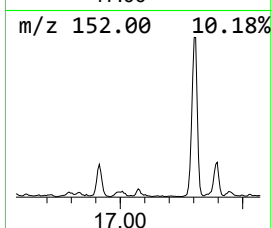
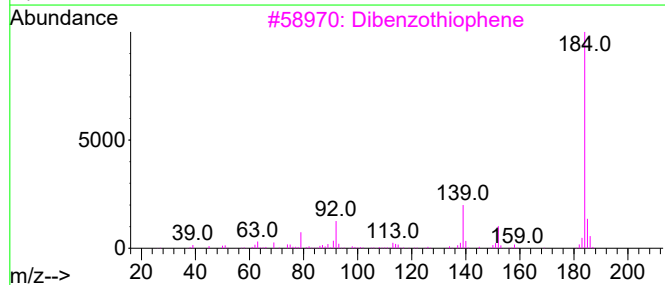
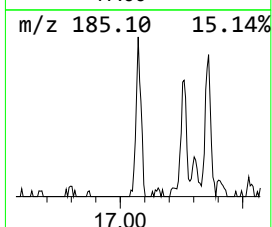
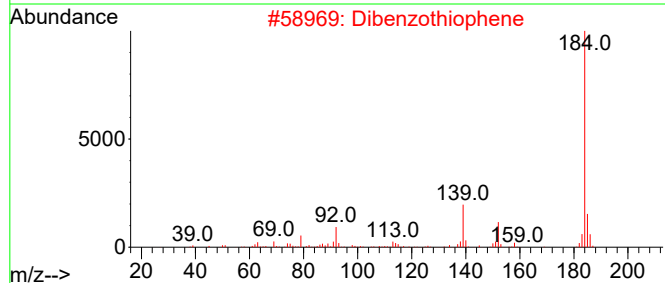
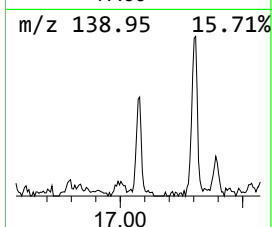
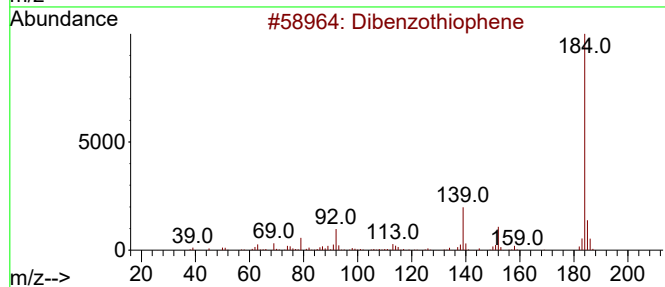
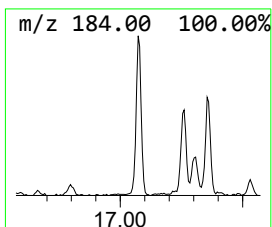
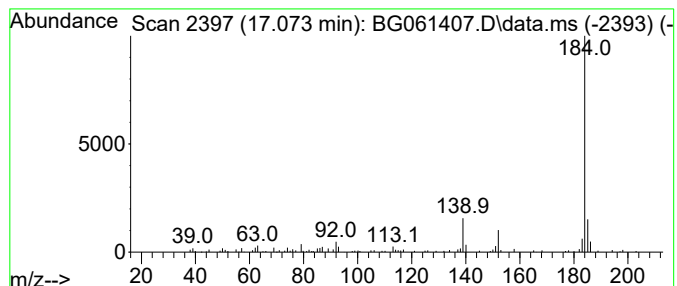
Quant Method : Z:\svoasrv\HPCHEM1\BNA_G\Methods\SFAM-EPA-BG052124.MA.M
 Quant Title : SVOA CALIBRATION

TIC Library : C:\DATABASE\NIST20.L
 TIC Integration Parameters: LSCINT.P

 Peak Number 10 Dibenzothiophene Concentration Rank 21

R.T.	EstConc	Area	Relative to ISTD	R.T.
17.073	6.77 ng/ul	144390	Phenanthrene-d10	17.261

Hit#	of	5	Tentative ID	MW	MolForm	CAS#	Qual
1			Dibenzothiophene	184	C12H8S	000132-65-0	95
2			Dibenzothiophene	184	C12H8S	000132-65-0	95
3			Dibenzothiophene	184	C12H8S	000132-65-0	95
4			Naphtho[2,3-b]thiophene	184	C12H8S	000268-77-9	94
5			Naphtho[2,1-b]thiophene	184	C12H8S	000233-02-3	94



Data Path : Z:\svoasrv\HPCHEM1\BNA_G\Data\BG053124\
 Data File : BG061407.D
 Acq On : 1 Jun 2024 1:02
 Operator : MA/JU
 Sample : P2588-10
 Misc :
 ALS Vial : 18 Sample Multiplier: 1

Instrument :
 BNA_G
 ClientSampleId :
 BH5T9

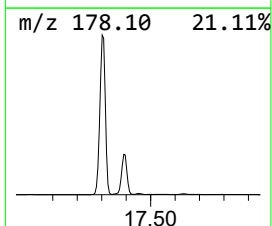
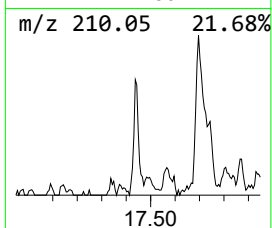
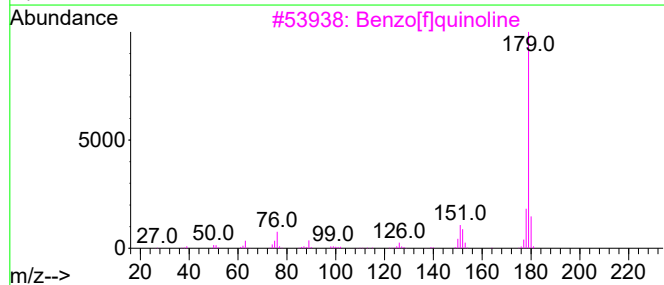
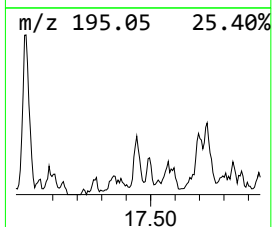
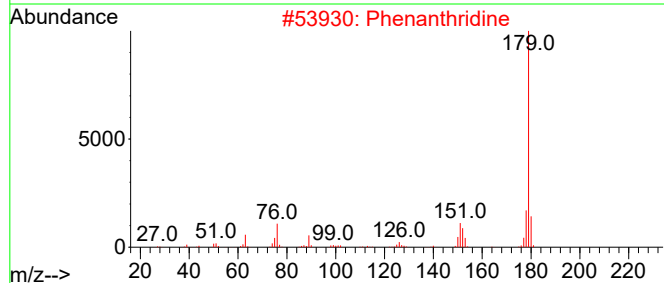
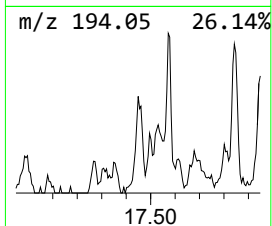
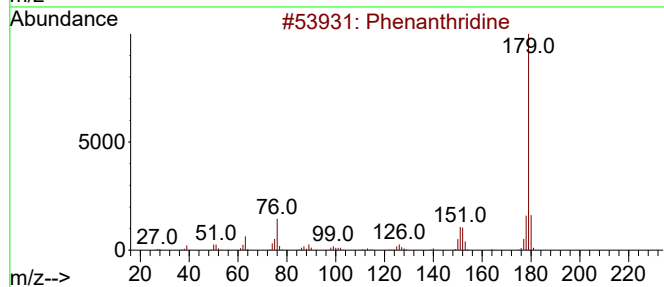
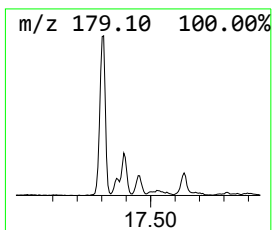
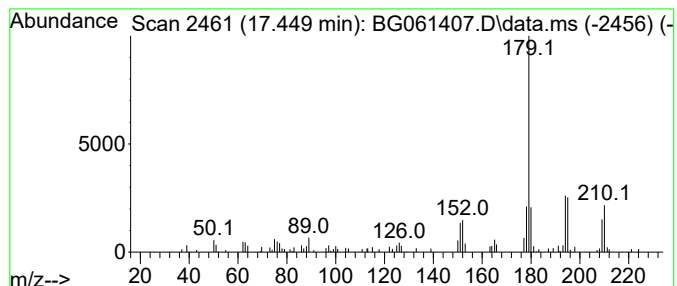
Quant Method : Z:\svoasrv\HPCHEM1\BNA_G\Methods\SFAM-EPA-BG052124.MA.M
 Quant Title : SVOA CALIBRATION

TIC Library : C:\DATABASE\NIST20.L
 TIC Integration Parameters: LSCINT.P

 Peak Number 11 Phenanthridine Concentration Rank 28

R.T.	EstConc	Area	Relative to ISTD	R.T.
17.449	3.85 ng/ul	82130	Phenanthrene-d10	17.261

Hit#	of	5	Tentative ID	MW	MolForm	CAS#	Qual
1			Phenanthridine	179	C13H9N	000229-87-8	83
2			Phenanthridine	179	C13H9N	000229-87-8	64
3			Benzo[f]quinoline	179	C13H9N	000085-02-9	64
4			Acridine	179	C13H9N	000260-94-6	60
5			Acridine	179	C13H9N	000260-94-6	60



Data Path : Z:\svoasrv\HPCHEM1\BNA_G\Data\BG053124\
 Data File : BG061407.D
 Acq On : 1 Jun 2024 1:02
 Operator : MA/JU
 Sample : P2588-10
 Misc :
 ALS Vial : 18 Sample Multiplier: 1

Instrument :
 BNA_G
 ClientSampleId :
 BH5T9

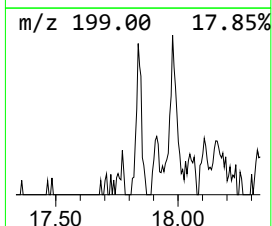
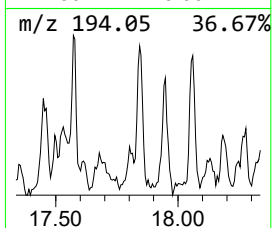
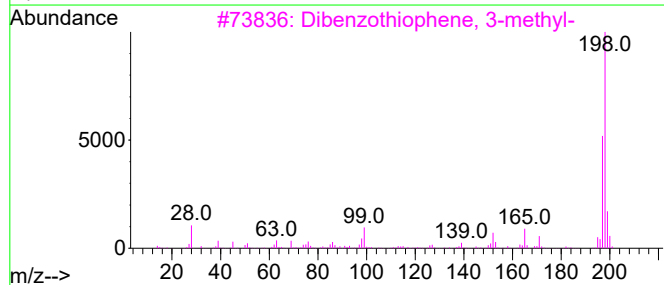
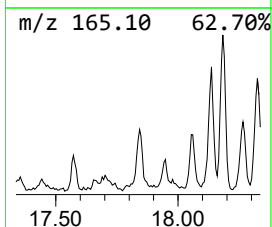
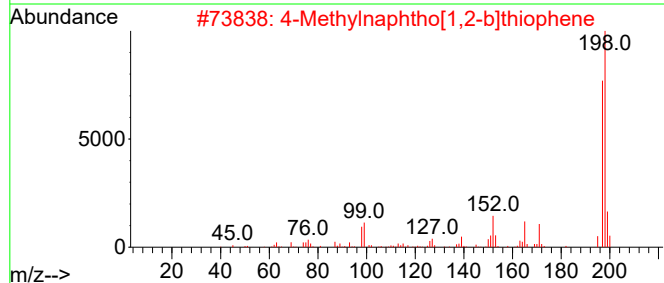
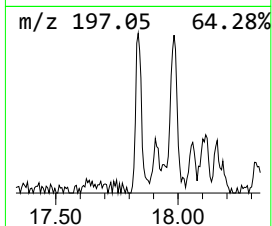
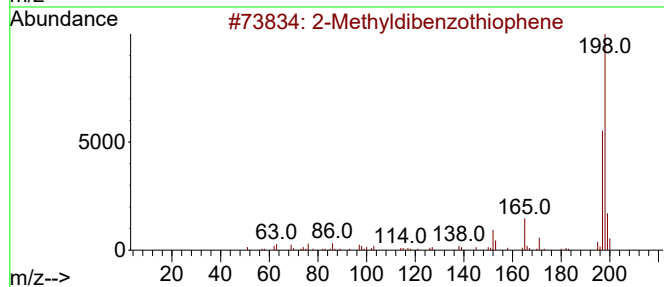
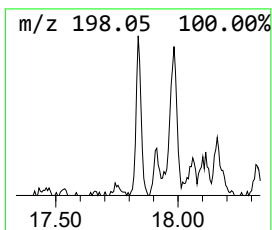
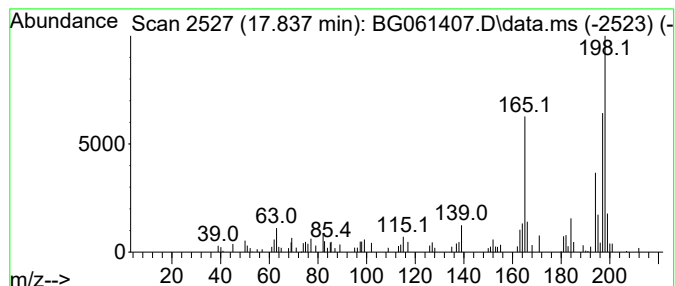
Quant Method : Z:\svoasrv\HPCHEM1\BNA_G\Methods\SFAM-EPA-BG052124.MA.M
 Quant Title : SVOA CALIBRATION

TIC Library : C:\DATABASE\NIST20.L
 TIC Integration Parameters: LSCINT.P

 Peak Number 12 2-Methyldibenzothiophene Concentration Rank 30

R.T.	EstConc	Area	Relative to ISTD	R.T.
17.837	3.72 ng/ul	79303	Phenanthrene-d10	17.261

Hit#	of	5	Tentative ID	MW	MolForm	CAS#	Qual
1			2-Methyldibenzothiophene	198	C13H10S	1000383-55-1	72
2			4-Methylnaphtho[1,2-b]thiophene	198	C13H10S	067388-11-8	60
3			Dibenzothiophene, 3-methyl-	198	C13H10S	016587-52-3	58
4			Dibenzothiophene, 4-methyl-	198	C13H10S	007372-88-5	53
5			Benzenamine, 4,4'-methylenebis-	198	C13H14N2	000101-77-9	49



Data Path : Z:\svoasrv\HPCHEM1\BNA_G\Data\BG053124\
 Data File : BG061407.D
 Acq On : 1 Jun 2024 1:02
 Operator : MA/JU
 Sample : P2588-10
 Misc :
 ALS Vial : 18 Sample Multiplier: 1

Instrument :
 BNA_G
 ClientSampleId :
 BH5T9

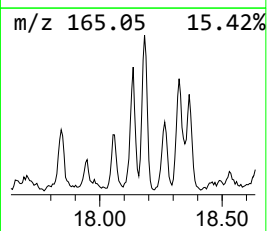
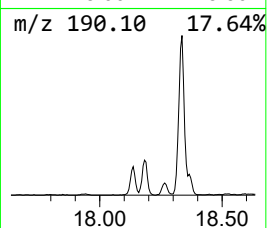
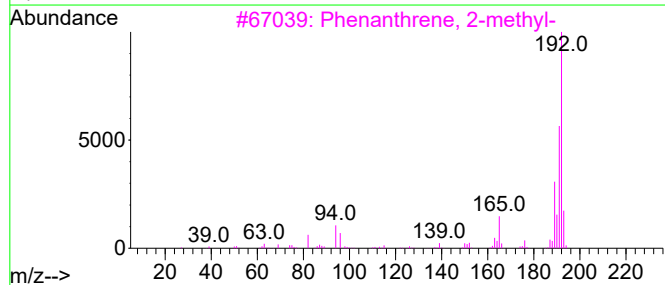
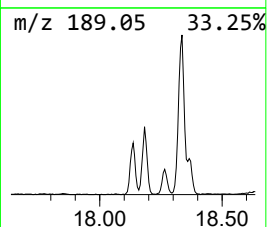
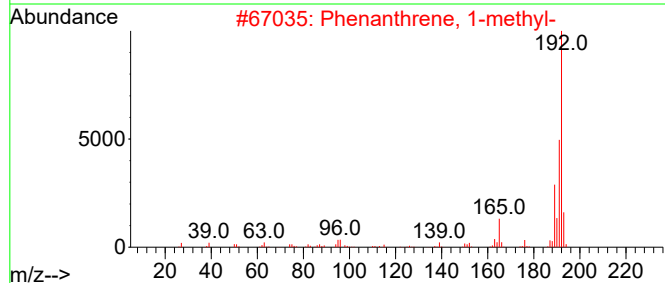
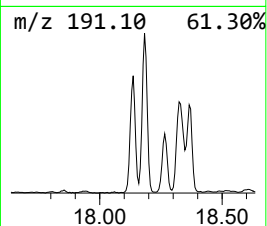
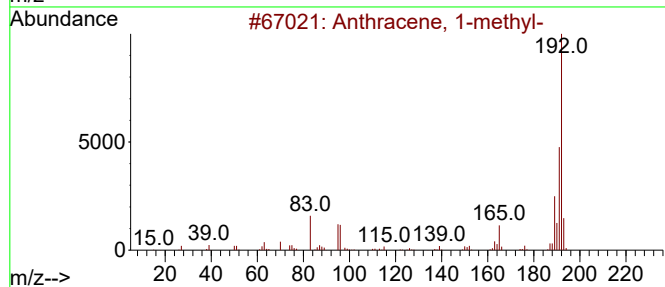
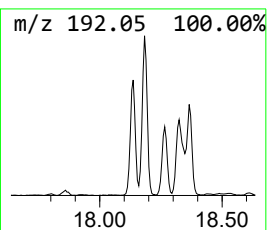
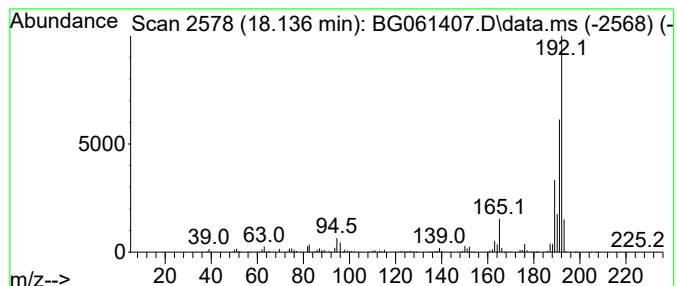
Quant Method : Z:\svoasrv\HPCHEM1\BNA_G\Methods\SFAM-EPA-BG052124.MA.M
 Quant Title : SVOA CALIBRATION

TIC Library : C:\DATABASE\NIST20.L
 TIC Integration Parameters: LSCINT.P

 Peak Number 13 Anthracene, 1-methyl- Concentration Rank 5

R.T.	EstConc	Area	Relative to ISTD	R.T.
18.136	22.97 ng/ul	489857	Phenanthrene-d10	17.261

Hit#	of	5	Tentative ID	MW	MolForm	CAS#	Qual
1			Anthracene, 1-methyl-	192	C15H12	000610-48-0	93
2			Phenanthrene, 1-methyl-	192	C15H12	000832-69-9	93
3			Phenanthrene, 2-methyl-	192	C15H12	002531-84-2	93
4			Anthracene, 2-methyl-	192	C15H12	000613-12-7	93
5			1H-Cyclopropa[1]phenanthrene,1a,...	192	C15H12	000949-41-7	93



Data Path : Z:\svoasrv\HPCHEM1\BNA_G\Data\BG053124\
 Data File : BG061407.D
 Acq On : 1 Jun 2024 1:02
 Operator : MA/JU
 Sample : P2588-10
 Misc :
 ALS Vial : 18 Sample Multiplier: 1

Instrument :
 BNA_G
 ClientSampleId :
 BH5T9

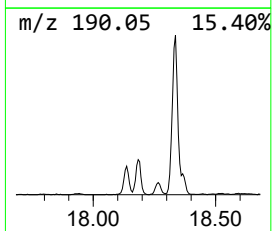
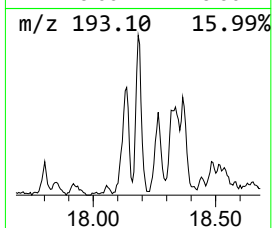
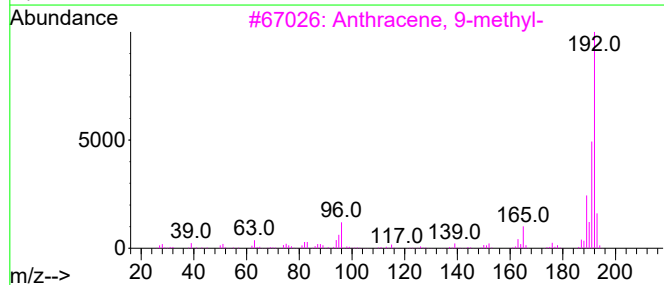
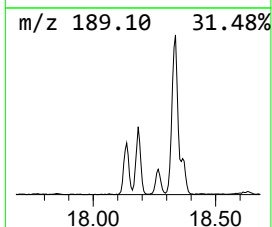
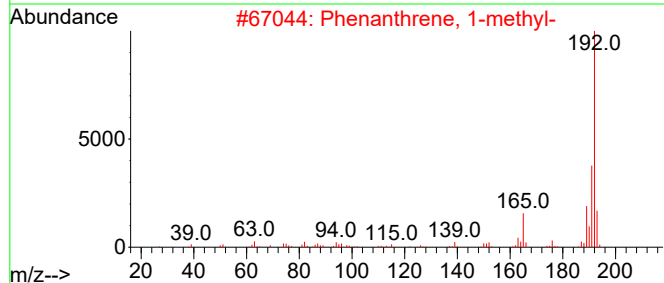
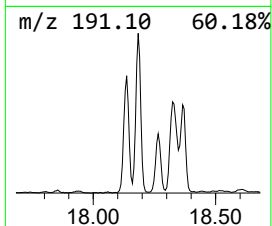
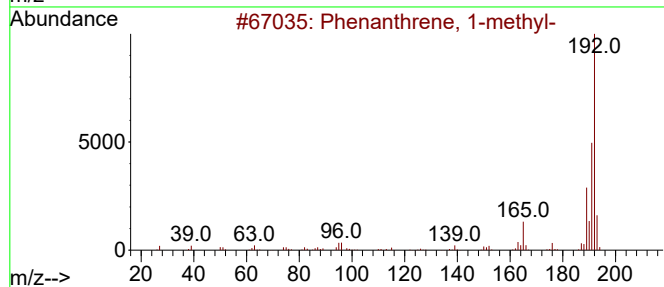
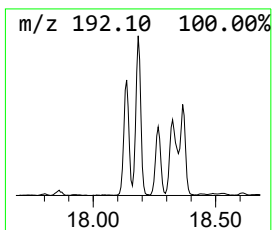
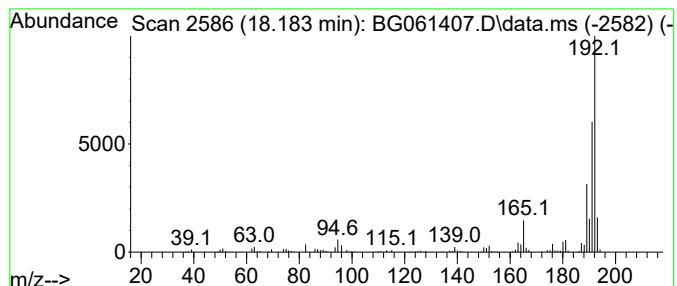
Quant Method : Z:\svoasrv\HPCHEM1\BNA_G\Methods\SFAM-EPA-BG052124.MA.M
 Quant Title : SVOA CALIBRATION

TIC Library : C:\DATABASE\NIST20.L
 TIC Integration Parameters: LSCINT.P

 Peak Number 14 Phenanthrene, 1-methyl- Concentration Rank 4

R.T.	EstConc	Area	Relative to ISTD	R.T.
18.183	27.87 ng/ul	594504	Phenanthrene-d10	17.261

Hit#	of 5	Tentative ID	MW	MolForm	CAS#	Qual
1		Phenanthrene, 1-methyl-	192	C15H12	000832-69-9	97
2		Phenanthrene, 1-methyl-	192	C15H12	000832-69-9	96
3		Anthracene, 9-methyl-	192	C15H12	000779-02-2	96
4		Phenanthrene, 2-methyl-	192	C15H12	002531-84-2	95
5		Phenanthrene, 2-methyl-	192	C15H12	002531-84-2	95



Data Path : Z:\svoasrv\HPCHEM1\BNA_G\Data\BG053124\
 Data File : BG061407.D
 Acq On : 1 Jun 2024 1:02
 Operator : MA/JU
 Sample : P2588-10
 Misc :
 ALS Vial : 18 Sample Multiplier: 1

Instrument :
 BNA_G
 ClientSampleId :
 BH5T9

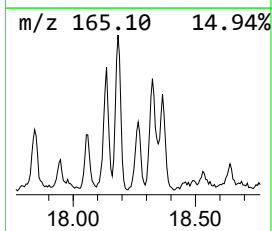
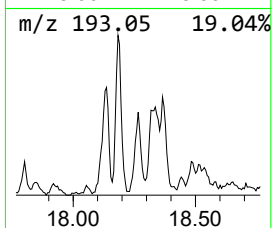
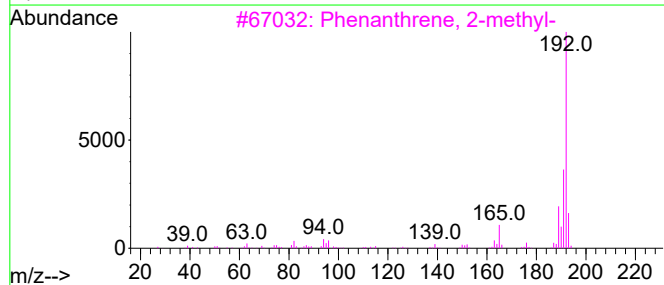
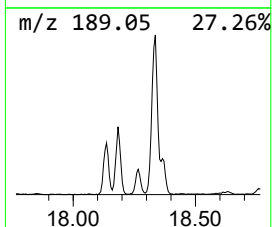
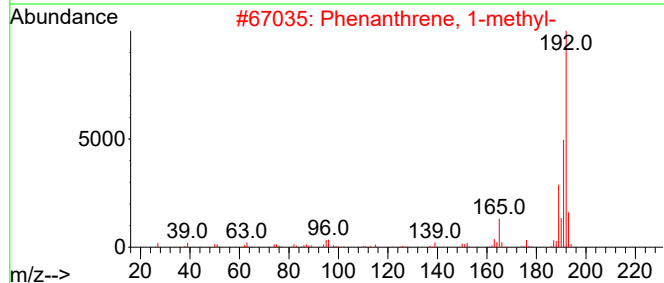
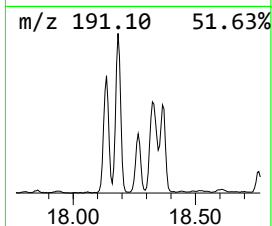
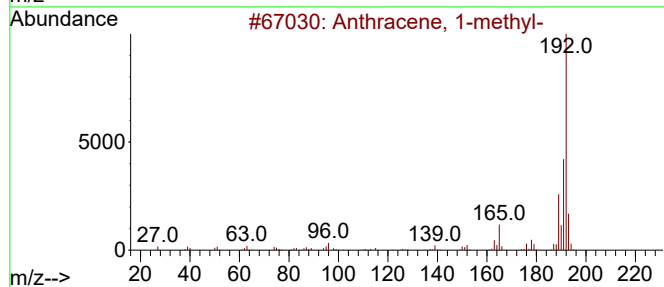
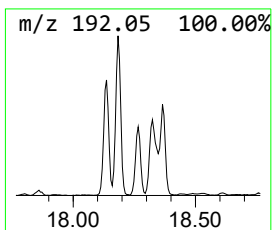
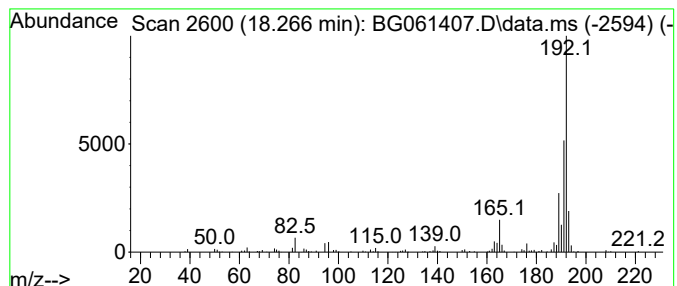
Quant Method : Z:\svoasrv\HPCHEM1\BNA_G\Methods\SFAM-EPA-BG052124.MA.M
 Quant Title : SVOA CALIBRATION

TIC Library : C:\DATABASE\NIST20.L
 TIC Integration Parameters: LSCINT.P

 Peak Number 15 Phenanthrene, 2-methyl- Concentration Rank 14

R.T.	EstConc	Area	Relative to ISTD	R.T.
18.265	10.51 ng/ul	224172	Phenanthrene-d10	17.261

Hit#	of 5	Tentative ID	MW	MolForm	CAS#	Qual
1		Anthracene, 1-methyl-	192	C15H12	000610-48-0	95
2		Phenanthrene, 1-methyl-	192	C15H12	000832-69-9	95
3		Phenanthrene, 2-methyl-	192	C15H12	002531-84-2	94
4		Phenanthrene, 2-methyl-	192	C15H12	002531-84-2	94
5		Anthracene, 9-methyl-	192	C15H12	000779-02-2	93



Data Path : Z:\svoasrv\HPCHEM1\BNA_G\Data\BG053124\
 Data File : BG061407.D
 Acq On : 1 Jun 2024 1:02
 Operator : MA/JU
 Sample : P2588-10
 Misc :
 ALS Vial : 18 Sample Multiplier: 1

Instrument :
 BNA_G
 ClientSampleId :
 BH5T9

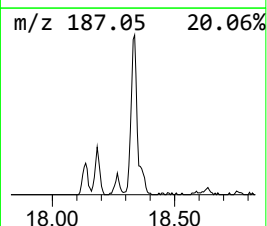
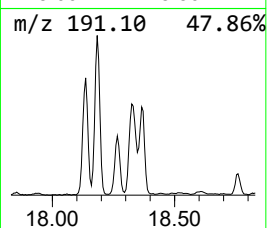
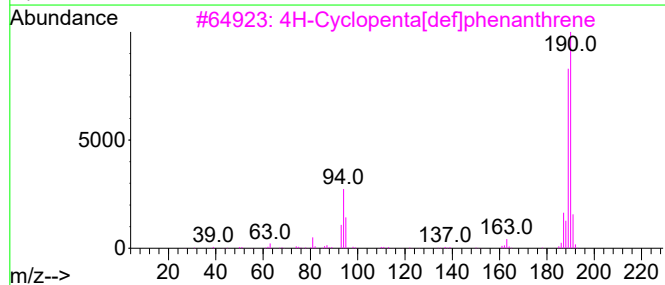
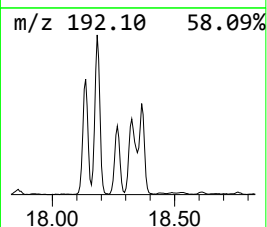
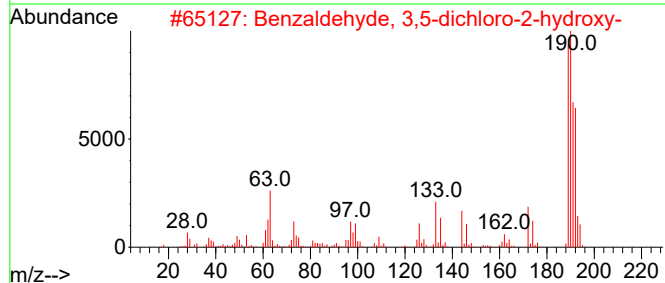
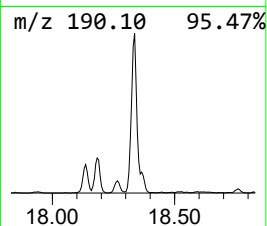
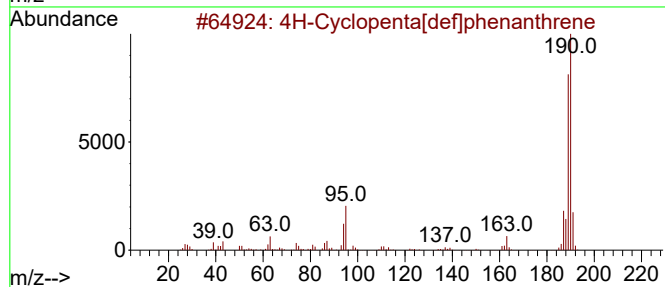
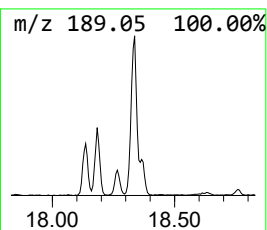
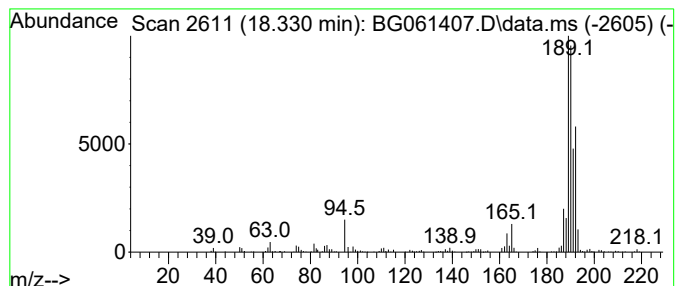
Quant Method : Z:\svoasrv\HPCHEM1\BNA_G\Methods\SFAM-EPA-BG052124.MA.M
 Quant Title : SVOA CALIBRATION

TIC Library : C:\DATABASE\NIST20.L
 TIC Integration Parameters: LSCINT.P

 Peak Number 16 4H-Cyclopenta[def]phenanthrene Concentration Rank 2

R.T.	EstConc	Area	Relative to ISTD	R.T.
18.330	35.00 ng/ul	746493	Phenanthrene-d10	17.261

Hit#	of	5	Tentative ID	MW	MolForm	CAS#	Qual
1			4H-Cyclopenta[def]phenanthrene	190	C15H10	000203-64-5	78
2			Benzaldehyde, 3,5-dichloro-2-hyd...	190	C7H4Cl2O2	000090-60-8	72
3			4H-Cyclopenta[def]phenanthrene	190	C15H10	000203-64-5	58
4			Benzaldehyde, 3,5-dichloro-2-hyd...	190	C7H4Cl2O2	000090-60-8	53
5			4H-Cyclopenta[def]phenanthrene	190	C15H10	000203-64-5	43



Data Path : Z:\svoasrv\HPCHEM1\BNA_G\Data\BG053124\
 Data File : BG061407.D
 Acq On : 1 Jun 2024 1:02
 Operator : MA/JU
 Sample : P2588-10
 Misc :
 ALS Vial : 18 Sample Multiplier: 1

Instrument :
 BNA_G
 ClientSampleId :
 BH5T9

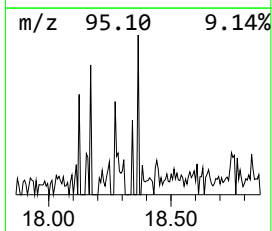
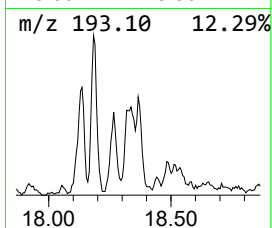
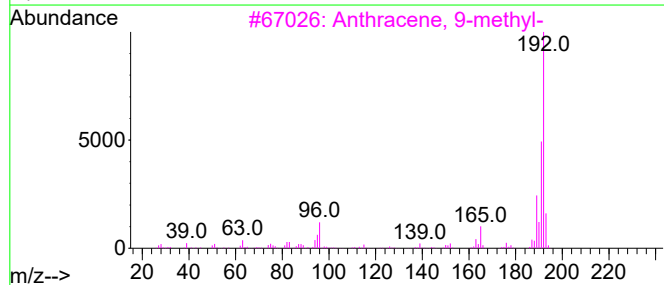
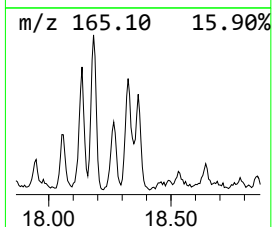
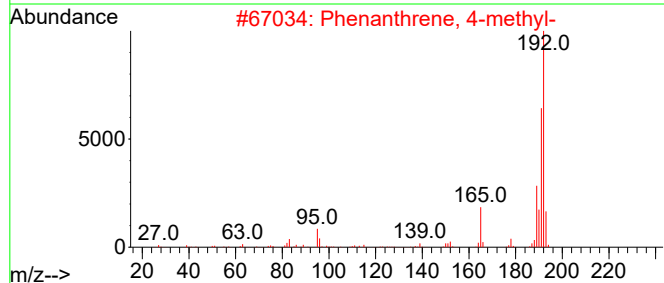
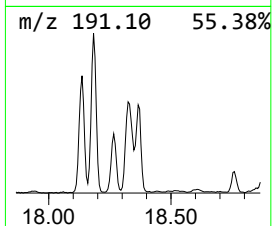
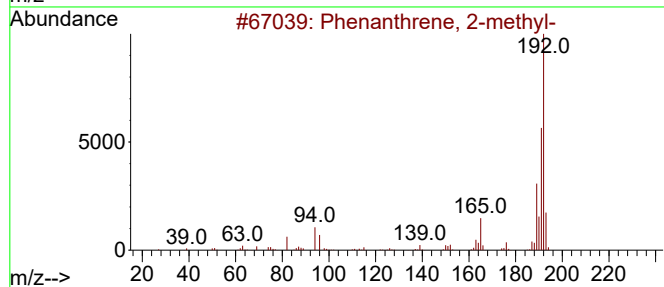
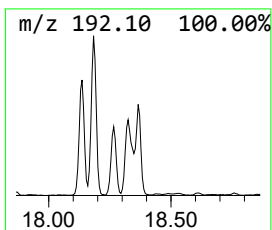
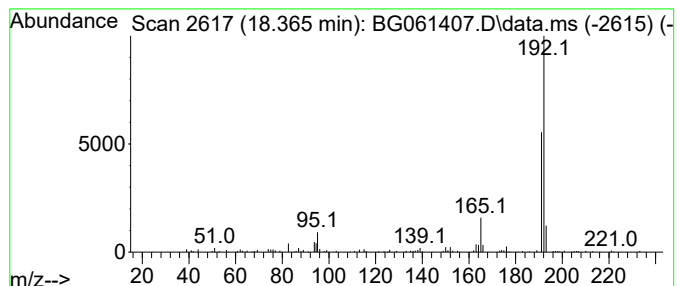
Quant Method : Z:\svoasrv\HPCHEM1\BNA_G\Methods\SFAM-EPA-BG052124.MA.M
 Quant Title : SVOA CALIBRATION

TIC Library : C:\DATABASE\NIST20.L
 TIC Integration Parameters: LSCINT.P

 Peak Number 17 Phenanthrene, 4-methyl- Concentration Rank 11

R.T.	EstConc	Area	Relative to ISTD	R.T.
18.365	12.41 ng/ul	264692	Phenanthrene-d10	17.261

Hit#	of 5	Tentative ID	MW	MolForm	CAS#	Qual
1		Phenanthrene, 2-methyl-	192	C15H12	002531-84-2	90
2		Phenanthrene, 4-methyl-	192	C15H12	000832-64-4	90
3		Anthracene, 9-methyl-	192	C15H12	000779-02-2	90
4		Anthracene, 9-methyl-	192	C15H12	000779-02-2	87
5		1H-Indene, 2-phenyl-	192	C15H12	004505-48-0	87



Data Path : Z:\svoasrv\HPCHEM1\BNA_G\Data\BG053124\
 Data File : BG061407.D
 Acq On : 1 Jun 2024 1:02
 Operator : MA/JU
 Sample : P2588-10
 Misc :
 ALS Vial : 18 Sample Multiplier: 1

Instrument :
 BNA_G
 ClientSampleId :
 BH5T9

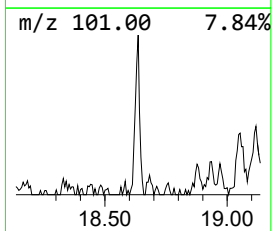
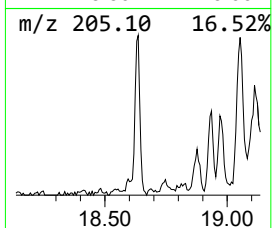
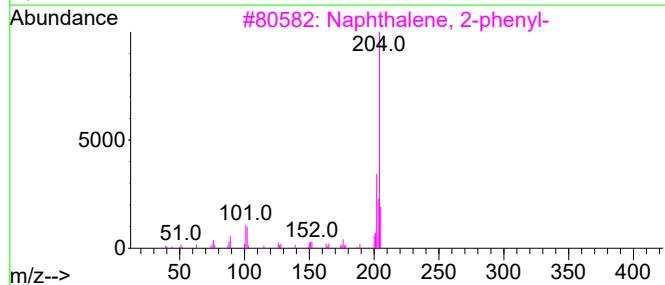
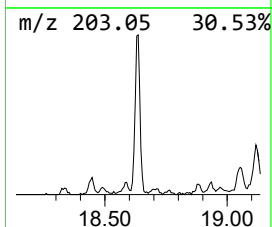
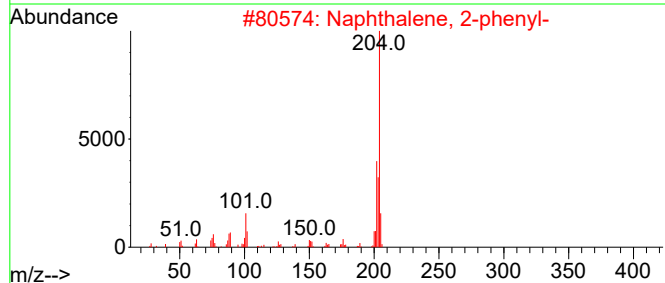
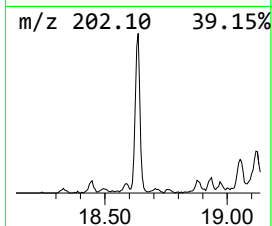
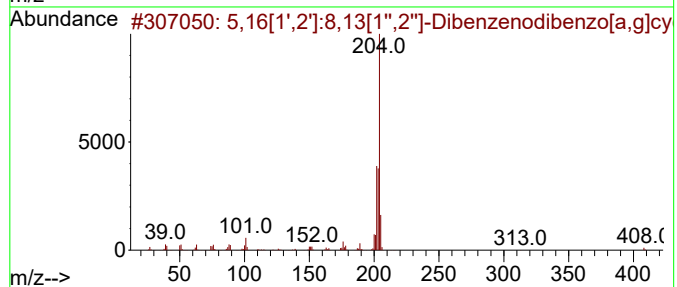
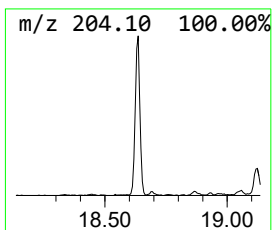
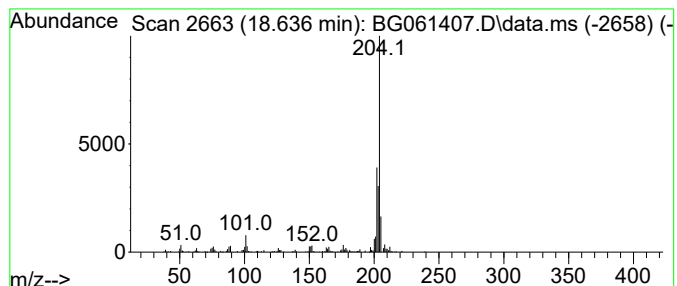
Quant Method : Z:\svoasrv\HPCHEM1\BNA_G\Methods\SFAM-EPA-BG052124.MA.M
 Quant Title : SVOA CALIBRATION

TIC Library : C:\DATABASE\NIST20.L
 TIC Integration Parameters: LSCINT.P

 Peak Number 18 5,16[1',2']:8,13[1'',2'']-D... Concentration Rank 8

R.T.	EstConc	Area	Relative to ISTD	R.T.
18.636	15.21 ng/ul	324402	Phenanthrene-d10	17.261

Hit#	of 5	Tentative ID	MW	MolForm	CAS#	Qual
1		5,16[1',2']:8,13[1'',2'']-Dibenz...	408	C32H24	005672-97-9	91
2		Naphthalene, 2-phenyl-	204	C16H12	000612-94-2	83
3		Naphthalene, 2-phenyl-	204	C16H12	000612-94-2	83
4		Naphthalene, 2-phenyl-	204	C16H12	000612-94-2	64
5		Naphthalene, 2-phenyl-	204	C16H12	000612-94-2	64



Data Path : Z:\svoasrv\HPCHEM1\BNA_G\Data\BG053124\
 Data File : BG061407.D
 Acq On : 1 Jun 2024 1:02
 Operator : MA/JU
 Sample : P2588-10
 Misc :
 ALS Vial : 18 Sample Multiplier: 1

Instrument :
 BNA_G
 ClientSampleId :
 BH5T9

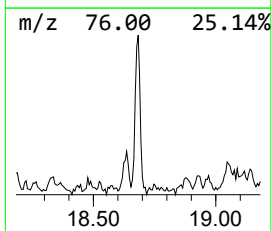
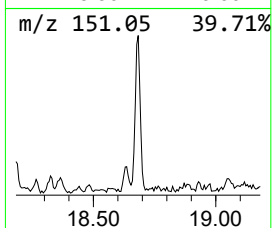
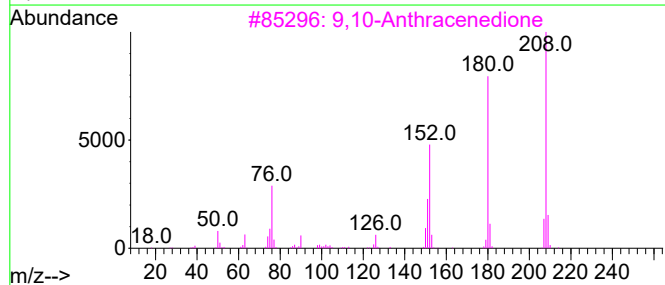
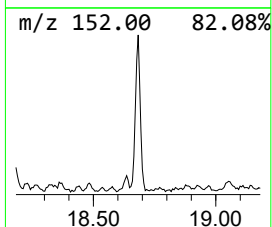
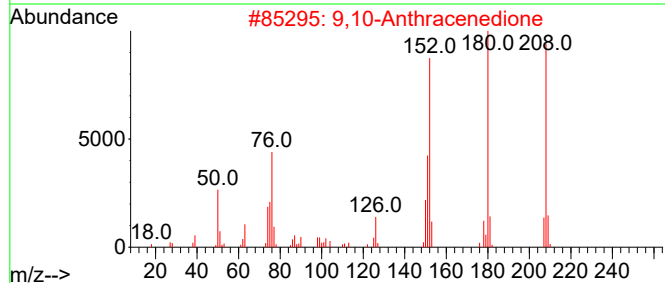
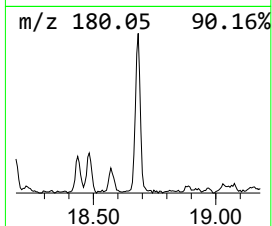
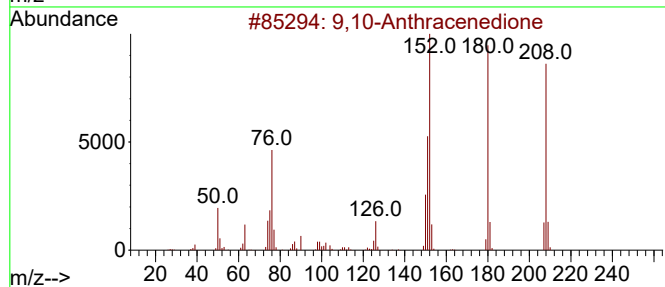
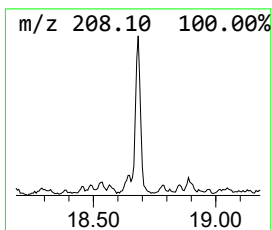
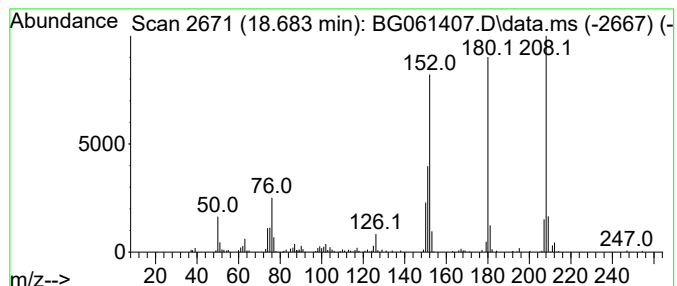
Quant Method : Z:\svoasrv\HPCHEM1\BNA_G\Methods\SFAM-EPA-BG052124.MA.M
 Quant Title : SVOA CALIBRATION

TIC Library : C:\DATABASE\NIST20.L
 TIC Integration Parameters: LSCINT.P

 Peak Number 19 9,10-Anthracenedione Concentration Rank 12

R.T.	EstConc	Area	Relative to ISTD	R.T.
18.683	11.94 ng/ul	254732	Phenanthrene-d10	17.261

Hit#	of 5	Tentative ID	MW	MolForm	CAS#	Qual
1		9,10-Anthracenedione	208	C14H8O2	000084-65-1	95
2		9,10-Anthracenedione	208	C14H8O2	000084-65-1	94
3		9,10-Anthracenedione	208	C14H8O2	000084-65-1	94
4		9,10-Anthracenedione	208	C14H8O2	000084-65-1	93
5		9H-Fluoren-9-one	180	C13H8O	000486-25-9	86



Data Path : Z:\svoasrv\HPCHEM1\BNA_G\Data\BG053124\
 Data File : BG061407.D
 Acq On : 1 Jun 2024 1:02
 Operator : MA/JU
 Sample : P2588-10
 Misc :
 ALS Vial : 18 Sample Multiplier: 1

Instrument :
 BNA_G
 ClientSampleId :
 BH5T9

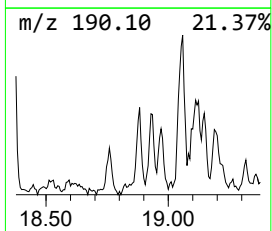
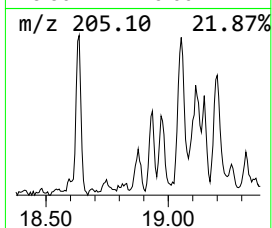
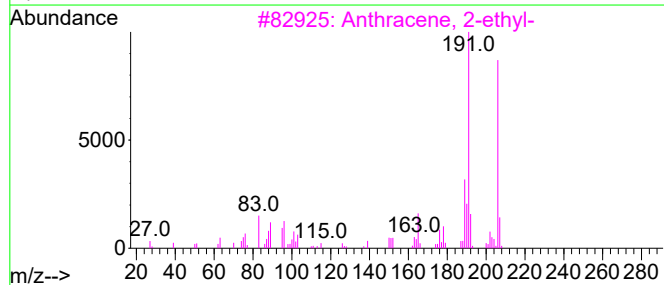
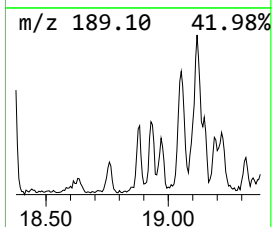
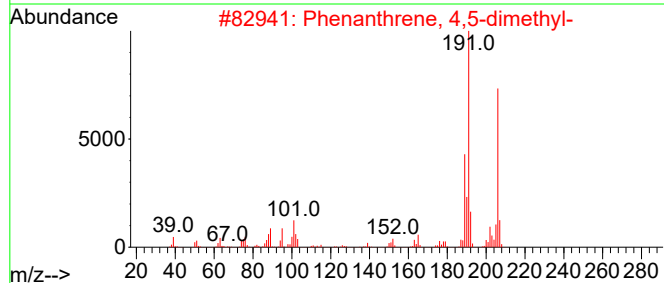
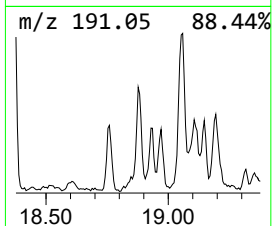
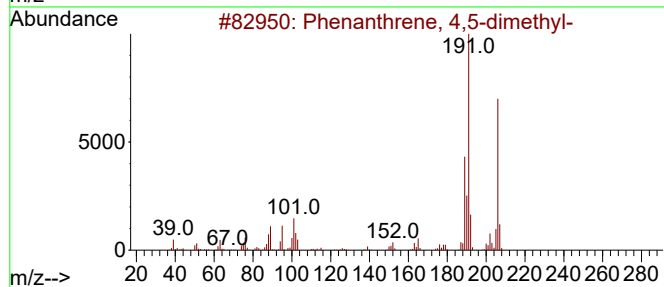
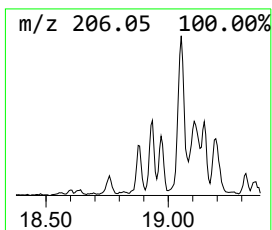
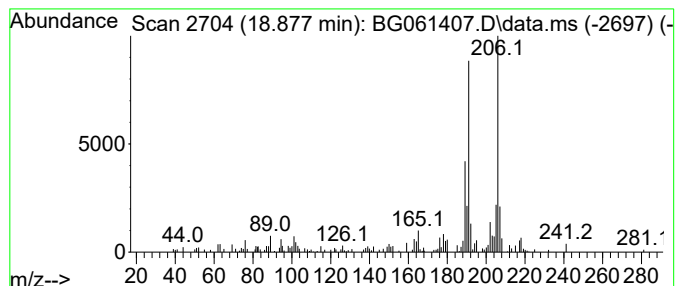
Quant Method : Z:\svoasrv\HPCHEM1\BNA_G\Methods\SFAM-EPA-BG052124.MA.M
 Quant Title : SVOA CALIBRATION

TIC Library : C:\DATABASE\NIST20.L
 TIC Integration Parameters: LSCINT.P

 Peak Number 20 Phenanthrene, 4,5-dimethyl- Concentration Rank 19

R.T.	EstConc	Area	Relative to ISTD	R.T.
18.877	7.17 ng/ul	152871	Phenanthrene-d10	17.261

Hit#	of 5	Tentative ID	MW	MolForm	CAS#	Qual
1		Phenanthrene, 4,5-dimethyl-	206	C16H14	003674-69-9	93
2		Phenanthrene, 4,5-dimethyl-	206	C16H14	003674-69-9	93
3		Anthracene, 2-ethyl-	206	C16H14	052251-71-5	90
4		Anthracene, 1,4-dimethyl-	206	C16H14	000781-92-0	90
5		Phenanthrene, 4,5-dimethyl-	206	C16H14	003674-69-9	90



Data Path : Z:\svoasrv\HPCHEM1\BNA_G\Data\BG053124\
 Data File : BG061407.D
 Acq On : 1 Jun 2024 1:02
 Operator : MA/JU
 Sample : P2588-10
 Misc :
 ALS Vial : 18 Sample Multiplier: 1

Instrument :
 BNA_G
 ClientSampleId :
 BH5T9

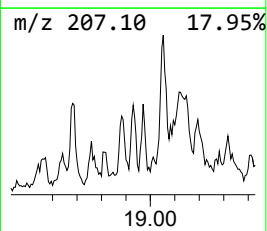
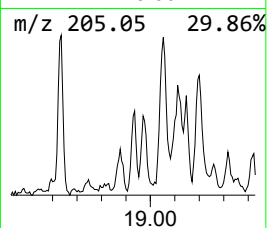
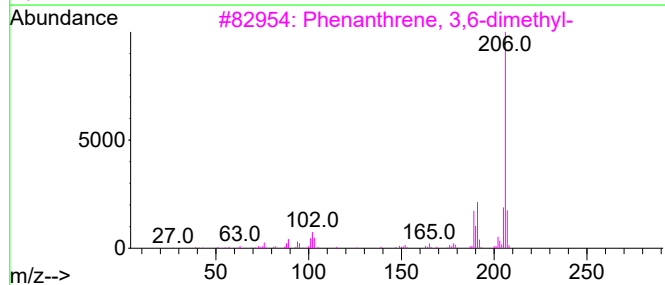
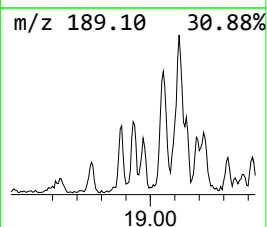
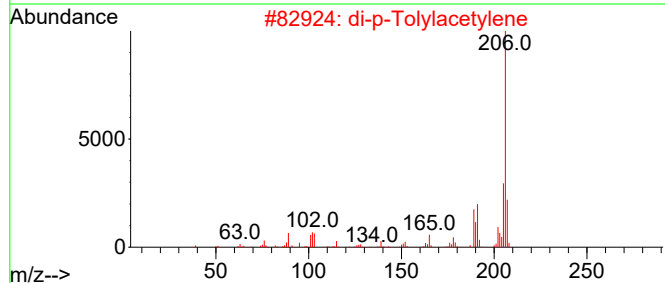
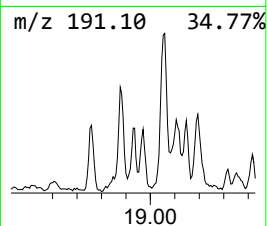
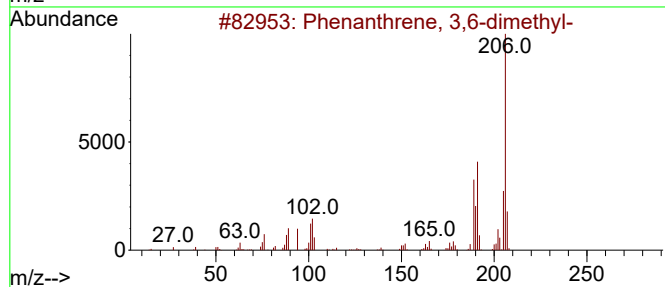
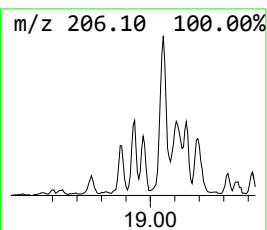
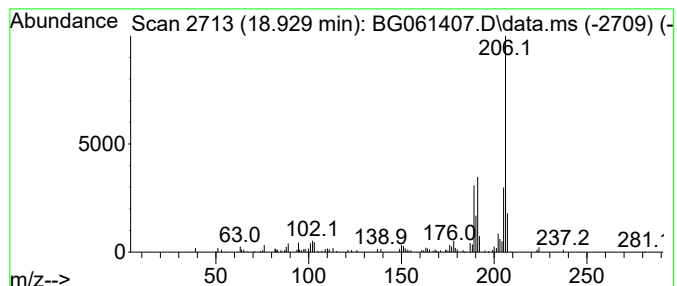
Quant Method : Z:\svoasrv\HPCHEM1\BNA_G\Methods\SFAM-EPA-BG052124.MA.M
 Quant Title : SVOA CALIBRATION

TIC Library : C:\DATABASE\NIST20.L
 TIC Integration Parameters: LSCINT.P

 Peak Number 21 Phenanthrene, 3,6-dimethyl- Concentration Rank 25

R.T.	EstConc	Area	Relative to ISTD	R.T.
18.929	4.92 ng/ul	104998	Phenanthrene-d10	17.261

Hit#	of 5	Tentative ID	MW	MolForm	CAS#	Qual
1		Phenanthrene, 3,6-dimethyl-	206	C16H14	001576-67-6	97
2		di-p-Tolylacetylene	206	C16H14	002789-88-0	94
3		Phenanthrene, 3,6-dimethyl-	206	C16H14	001576-67-6	91
4		di-p-Tolylacetylene	206	C16H14	002789-88-0	91
5		Phenanthrene, 1,7-dimethyl-	206	C16H14	000483-87-4	91



Data Path : Z:\svoasrv\HPCHEM1\BNA_G\Data\BG053124\
 Data File : BG061407.D
 Acq On : 1 Jun 2024 1:02
 Operator : MA/JU
 Sample : P2588-10
 Misc :
 ALS Vial : 18 Sample Multiplier: 1

Instrument :
 BNA_G
 ClientSampleId :
 BH5T9

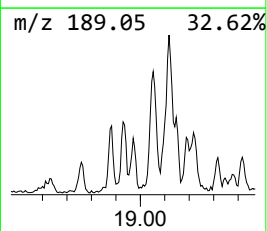
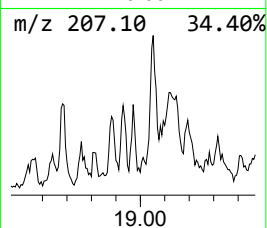
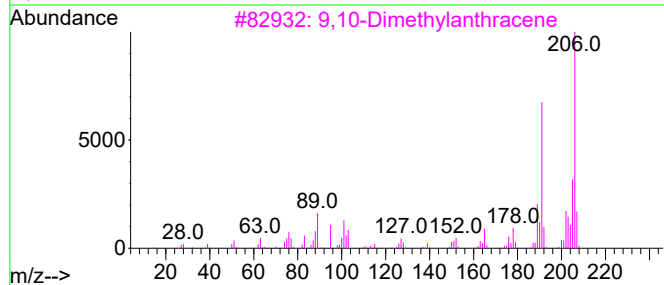
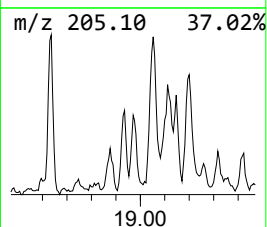
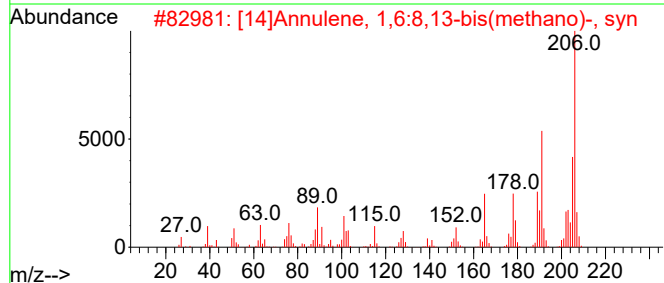
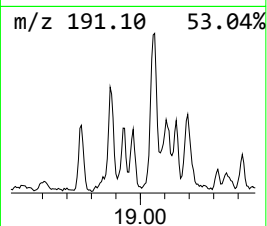
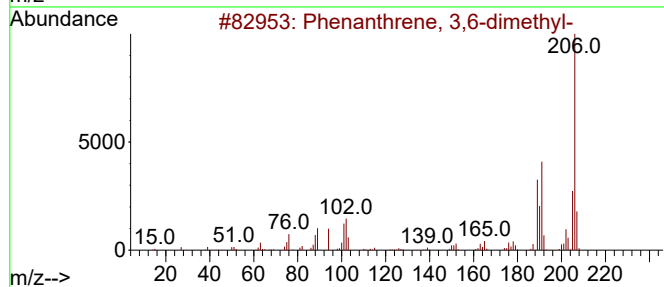
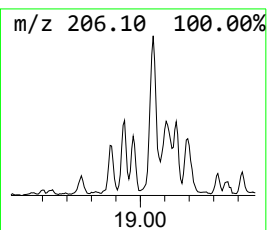
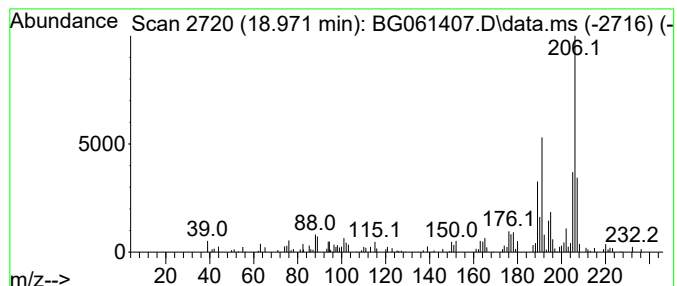
Quant Method : Z:\svoasrv\HPCHEM1\BNA_G\Methods\SFAM-EPA-BG052124.MA.M
 Quant Title : SVOA CALIBRATION

TIC Library : C:\DATABASE\NIST20.L
 TIC Integration Parameters: LSCINT.P

 Peak Number 22 [14]Annulene, 1,6:8,13-bis(... Concentration Rank 24

R.T.	EstConc	Area	Relative to ISTD	R.T.
18.971	5.10 ng/ul	108681	Phenanthrene-d10	17.261

Hit#	of 5	Tentative ID	MW	MolForm	CAS#	Qual
1		Phenanthrene, 3,6-dimethyl-	206	C16H14	001576-67-6	81
2		[14]Annulene, 1,6:8,13-bis(metha...	206	C16H14	085385-68-8	76
3		9,10-Dimethylantracene	206	C16H14	000781-43-1	76
4		di-p-Tolylacetylene	206	C16H14	002789-88-0	74
5		Phenanthrene, 1,7-dimethyl-	206	C16H14	000483-87-4	72



Data Path : Z:\svoasrv\HPCHEM1\BNA_G\Data\BG053124\
 Data File : BG061407.D
 Acq On : 1 Jun 2024 1:02
 Operator : MA/JU
 Sample : P2588-10
 Misc :
 ALS Vial : 18 Sample Multiplier: 1

Instrument :
 BNA_G
 ClientSampleId :
 BH5T9

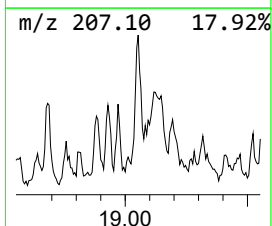
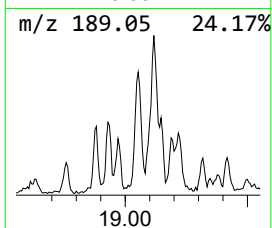
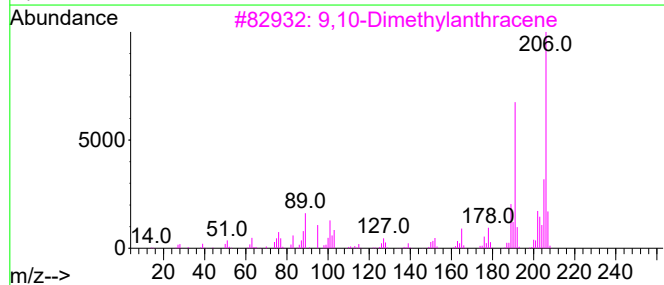
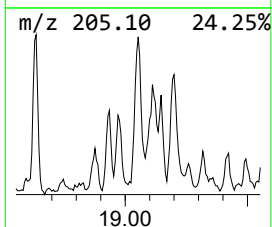
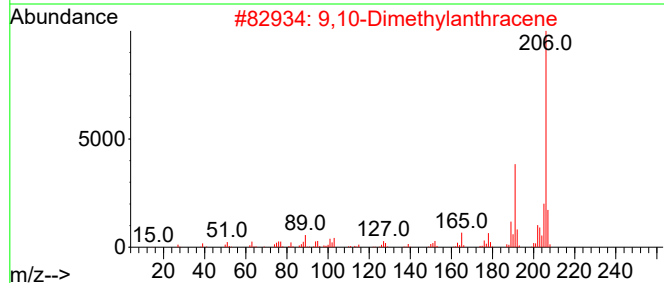
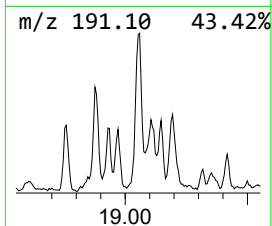
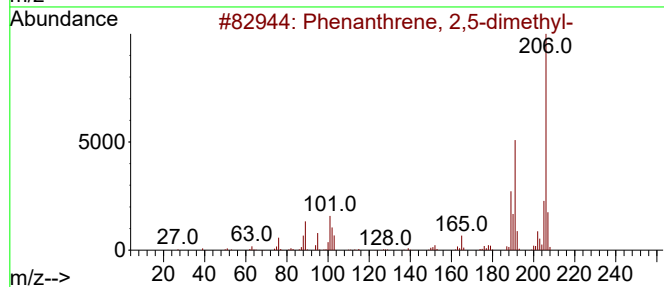
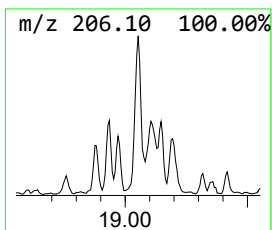
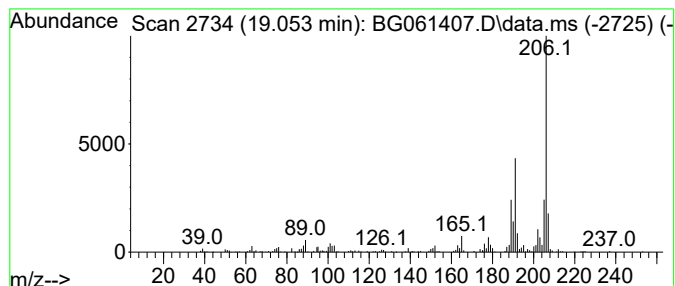
Quant Method : Z:\svoasrv\HPCHEM1\BNA_G\Methods\SFAM-EPA-BG052124.MA.M
 Quant Title : SVOA CALIBRATION

TIC Library : C:\DATABASE\NIST20.L
 TIC Integration Parameters: LSCINT.P

 Peak Number 23 Phenanthrene, 2,5-dimethyl- Concentration Rank 6

R.T.	EstConc	Area	Relative to ISTD	R.T.
19.053	20.08 ng/ul	428305	Phenanthrene-d10	17.261

Hit#	of 5	Tentative ID	MW	MolForm	CAS#	Qual
1		Phenanthrene, 2,5-dimethyl-	206	C16H14	003674-66-6	93
2		9,10-Dimethylantracene	206	C16H14	000781-43-1	91
3		9,10-Dimethylantracene	206	C16H14	000781-43-1	91
4		Phenanthrene, 3,6-dimethyl-	206	C16H14	001576-67-6	87
5		Phenanthrene, 2,3-dimethyl-	206	C16H14	003674-65-5	87



Data Path : Z:\svoasrv\HPCHEM1\BNA_G\Data\BG053124\
 Data File : BG061407.D
 Acq On : 1 Jun 2024 1:02
 Operator : MA/JU
 Sample : P2588-10
 Misc :
 ALS Vial : 18 Sample Multiplier: 1

Instrument :
 BNA_G
 ClientSampleId :
 BH5T9

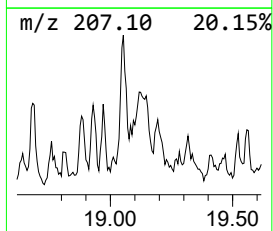
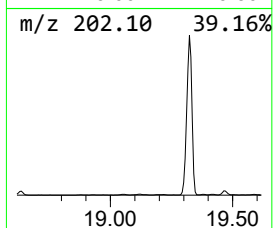
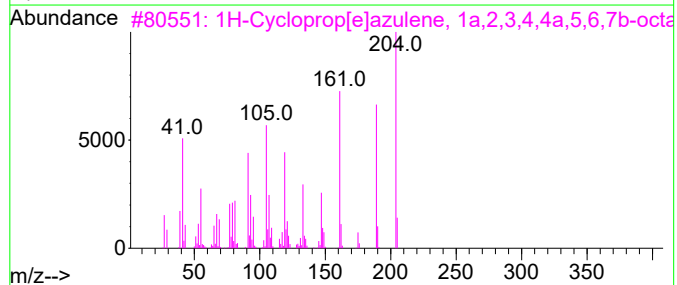
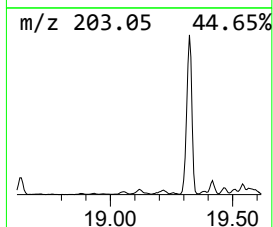
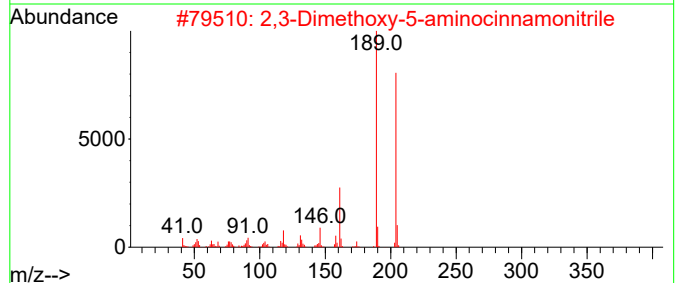
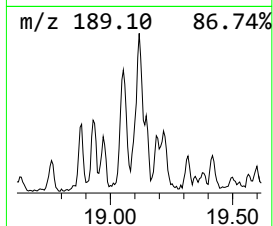
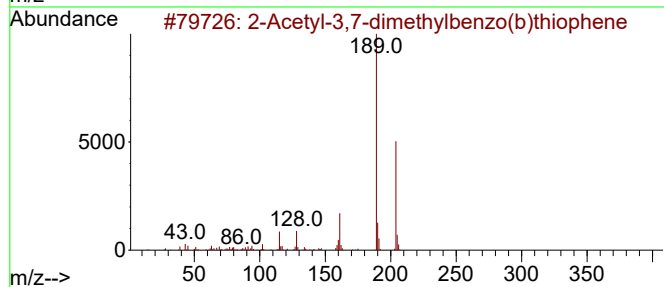
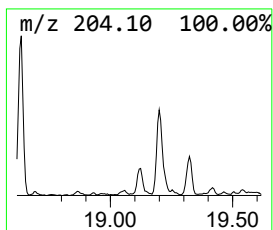
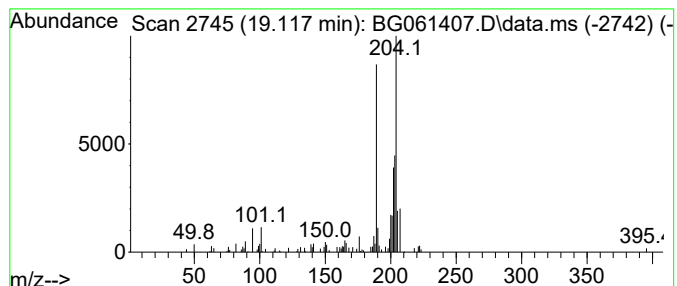
Quant Method : Z:\svoasrv\HPCHEM1\BNA_G\Methods\SFAM-EPA-BG052124.MA.M
 Quant Title : SVOA CALIBRATION

TIC Library : C:\DATABASE\NIST20.L
 TIC Integration Parameters: LSCINT.P

 Peak Number 24 unknown-02 Concentration Rank 16

R.T.	EstConc	Area	Relative to ISTD	R.T.
19.118	8.66 ng/ul	184723	Phenanthrene-d10	17.261

Hit#	of	5	Tentative ID	MW	MolForm	CAS#	Qual
1			2-Acetyl-3,7-dimethylbenzo(b)thi...	204	C12H12OS	006179-06-2	49
2			2,3-Dimethoxy-5-aminocinnamitrile	204	C11H12N2O2	1000214-46-5	47
3			1H-Cycloprop[e]azulene, 1a,2,3,4...	204	C15H24	000489-40-7	47
4			9,10-Bis(bromomethyl)anthracene	362	C16H12Br2	034373-96-1	47
5			5,16[1',2'] :8,13[1',2']-Dibenz...	408	C32H24	005672-97-9	47



Data Path : Z:\svoasrv\HPCHEM1\BNA_G\Data\BG053124\
 Data File : BG061407.D
 Acq On : 1 Jun 2024 1:02
 Operator : MA/JU
 Sample : P2588-10
 Misc :
 ALS Vial : 18 Sample Multiplier: 1

Instrument :
 BNA_G
 ClientSampleId :
 BH5T9

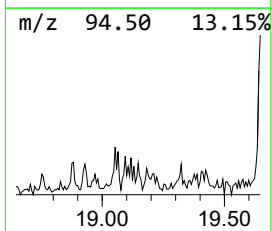
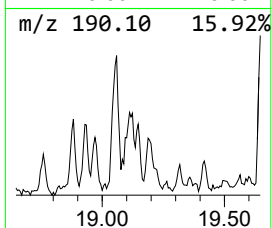
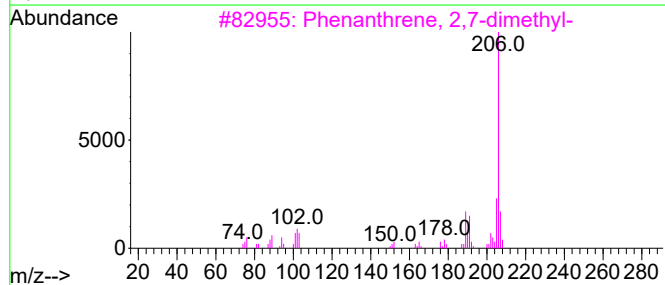
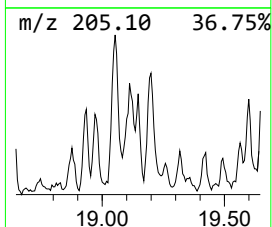
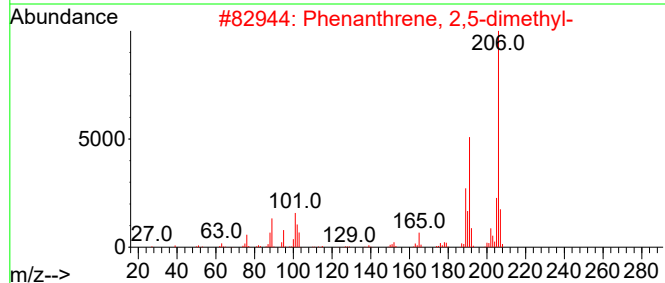
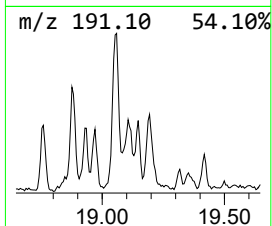
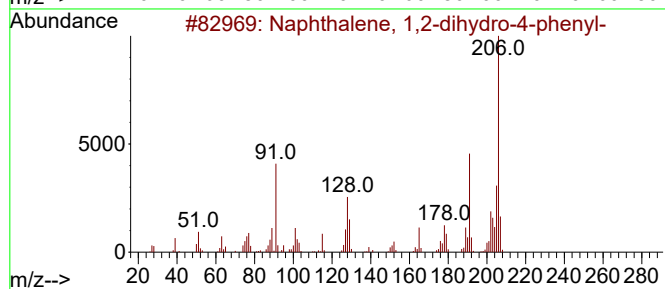
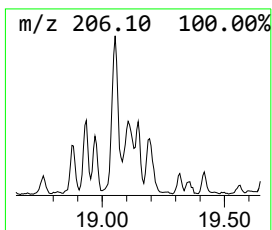
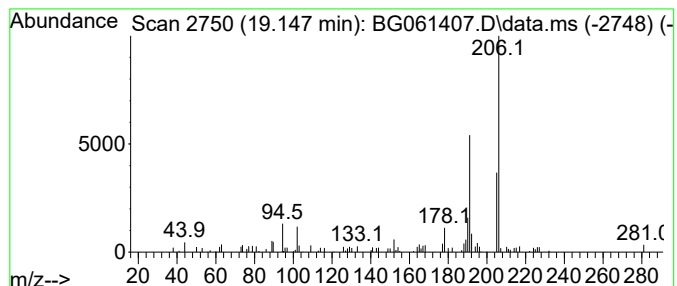
Quant Method : Z:\svoasrv\HPCHEM1\BNA_G\Methods\SFAM-EPA-BG052124.MA.M
 Quant Title : SVOA CALIBRATION

TIC Library : C:\DATABASE\NIST20.L
 TIC Integration Parameters: LSCINT.P

 Peak Number 25 Naphthalene, 1,2-dihydro-4-... Concentration Rank 27

R.T.	EstConc	Area	Relative to ISTD	R.T.
19.147	3.98 ng/ul	84876	Phenanthrene-d10	17.261

Hit#	of 5	Tentative ID	MW	MolForm	CAS#	Qual
1		Naphthalene, 1,2-dihydro-4-phenyl-	206	C16H14	007469-40-1	80
2		Phenanthrene, 2,5-dimethyl-	206	C16H14	003674-66-6	72
3		Phenanthrene, 2,7-dimethyl-	206	C16H14	001576-69-8	72
4		Phenanthrene, 3,6-dimethyl-	206	C16H14	001576-67-6	72
5		1,4-Diphenyl-1,3-butadiene	206	C16H14	000886-65-7	64



Data Path : Z:\svoasrv\HPCHEM1\BNA_G\Data\BG053124\
 Data File : BG061407.D
 Acq On : 1 Jun 2024 1:02
 Operator : MA/JU
 Sample : P2588-10
 Misc :
 ALS Vial : 18 Sample Multiplier: 1

Instrument :
 BNA_G
 ClientSampleId :
 BH5T9

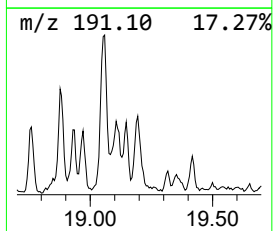
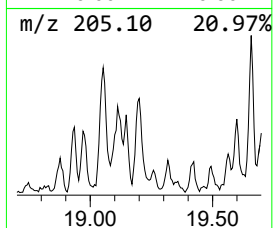
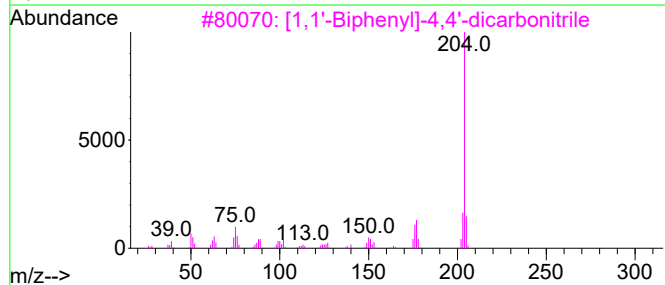
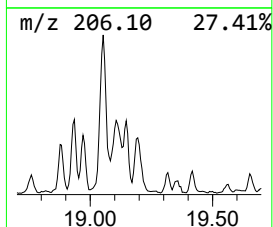
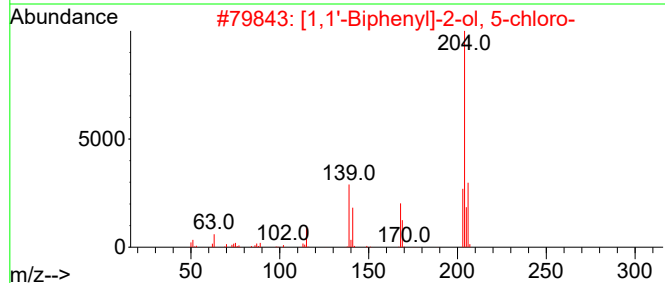
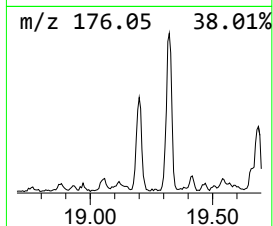
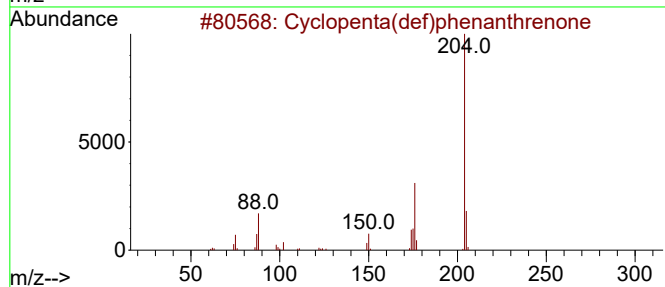
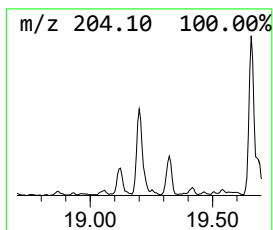
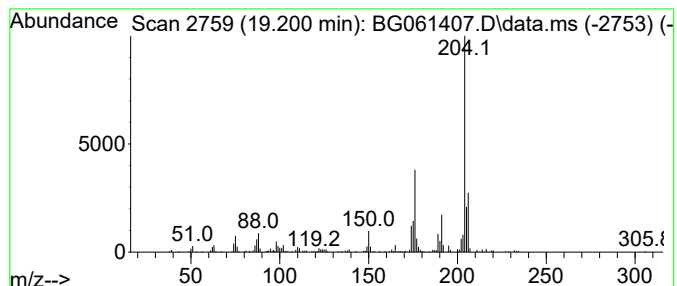
Quant Method : Z:\svoasrv\HPCHEM1\BNA_G\Methods\SFAM-EPA-BG052124.MA.M
 Quant Title : SVOA CALIBRATION

TIC Library : C:\DATABASE\NIST20.L
 TIC Integration Parameters: LSCINT.P

 Peak Number 26 Cyclopenta(def)phenanthrene Concentration Rank 9

R.T.	EstConc	Area	Relative to ISTD	R.T.
19.200	14.81 ng/ul	315847	Phenanthrene-d10	17.261

Hit#	of 5	Tentative ID	MW	MolForm	CAS#	Qual
1		Cyclopenta(def)phenanthrene	204	C15H8O	005737-13-3	90
2		[1,1'-Biphenyl]-2-ol, 5-chloro-	204	C12H9ClO	000607-12-5	50
3		[1,1'-Biphenyl]-4,4'-dicarbonitrile	204	C14H8N2	001591-30-6	50
4		[1,1'-Biphenyl]-2,2'-dicarbonitrile	204	C14H8N2	004341-02-0	49
5		1,2,4,8-Tetramethylbicyclo[6.3.0...]	204	C15H24	137235-51-9	49



Data Path : Z:\svoasrv\HPCHEM1\BNA_G\Data\BG053124\
 Data File : BG061407.D
 Acq On : 1 Jun 2024 1:02
 Operator : MA/JU
 Sample : P2588-10
 Misc :
 ALS Vial : 18 Sample Multiplier: 1

Instrument :
 BNA_G
 ClientSampleId :
 BH5T9

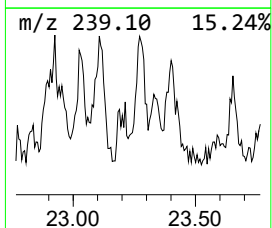
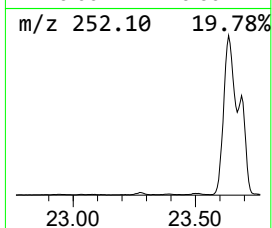
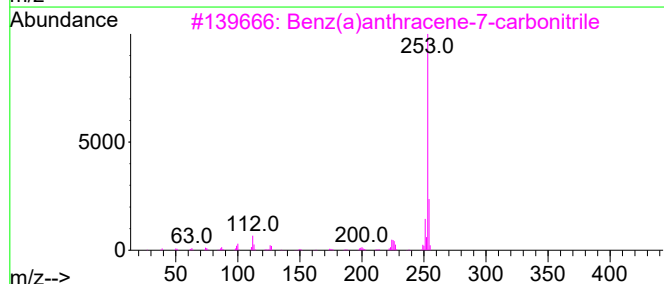
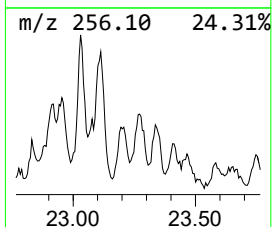
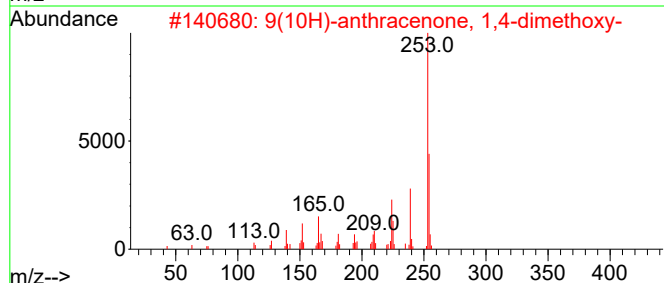
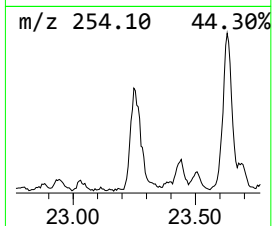
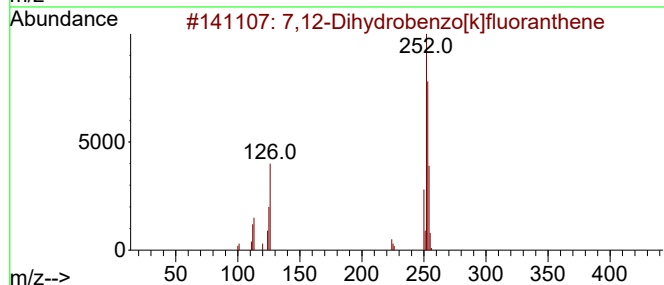
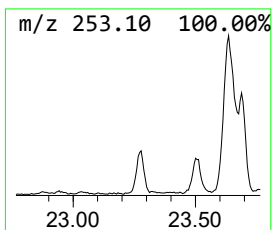
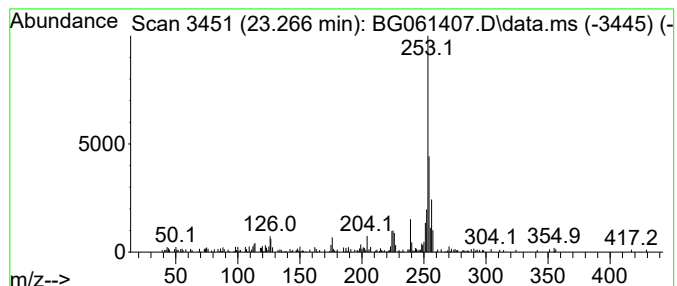
Quant Method : Z:\svoasrv\HPCHEM1\BNA_G\Methods\SFAM-EPA-BG052124.MA.M
 Quant Title : SVOA CALIBRATION

TIC Library : C:\DATABASE\NIST20.L
 TIC Integration Parameters: LSCINT.P

 Peak Number 36 7,12-Dihydrobenzo[k]fluoran... Concentration Rank 23

R.T.	EstConc	Area	Relative to ISTD	R.T.
23.266	6.59 ng/ul	195028	Perylene-d12	24.599

Hit#	of	5	Tentative ID	MW	MolForm	CAS#	Qual
1			7,12-Dihydrobenzo[k]fluoranthene	254	C20H14	1000080-17-7	58
2			9(10H)-anthracenone, 1,4-dimethoxy-	254	C16H14O3	1010396-70-2	53
3			Benz(a)anthracene-7-carbonitrile	253	C19H11N	007476-08-6	49
4			3-(3-Fluorobenzyl)-6-methyl-2-pr...	282	C18H19FN2	1000457-96-1	40
5			10-Oxo-5,5-dimethyl-5-sila-5,10-...	254	C14H14N2OSi	089052-45-9	40



Data Path : Z:\svoasrv\HPCHEM1\BNA_G\Data\BG053124\
 Data File : BG061407.D
 Acq On : 1 Jun 2024 1:02
 Operator : MA/JU
 Sample : P2588-10
 Misc :
 ALS Vial : 18 Sample Multiplier: 1

Instrument :
 BNA_G
 ClientSampleId :
 BH5T9

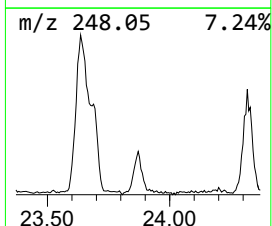
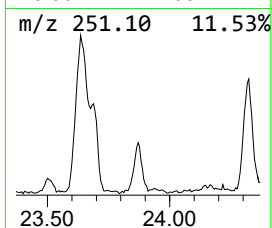
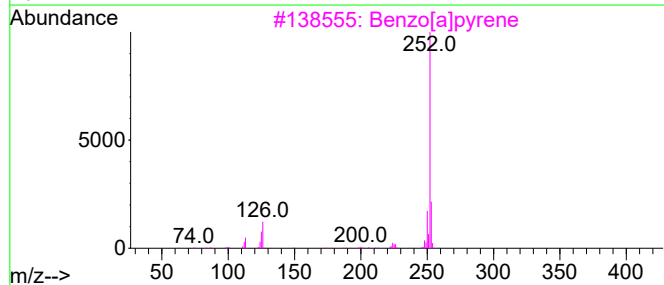
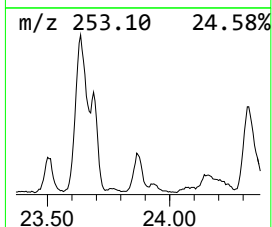
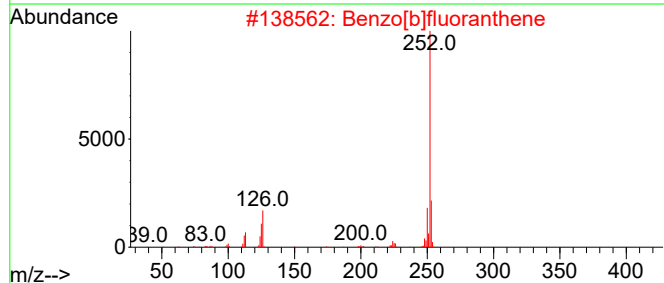
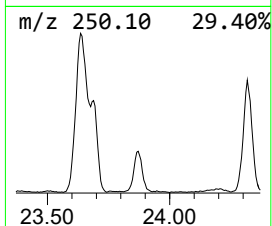
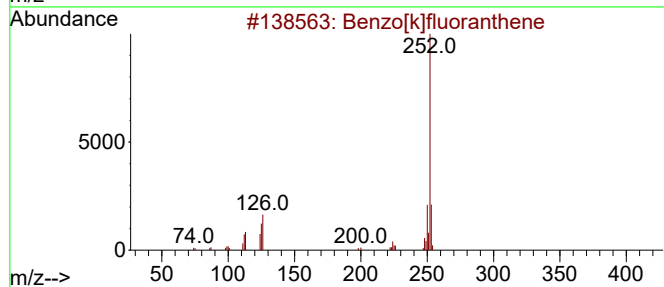
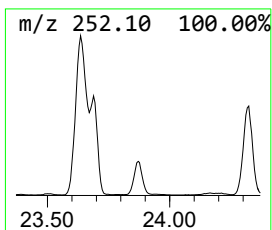
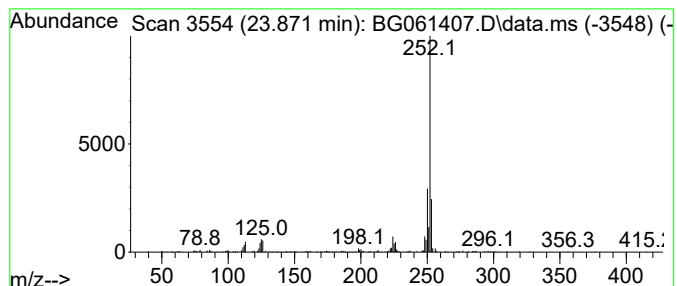
Quant Method : Z:\svoasrv\HPCHEM1\BNA_G\Methods\SFAM-EPA-BG052124.MA.M
 Quant Title : SVOA CALIBRATION

TIC Library : C:\DATABASE\NIST20.L
 TIC Integration Parameters: LSCINT.P

 Peak Number 37 Benzo[e]pyrene Concentration Rank 13

R.T.	EstConc	Area	Relative to ISTD	R.T.
23.871	11.00 ng/ul	325469	Perylene-d12	24.599

Hit#	of 5	Tentative ID	MW	MolForm	CAS#	Qual
1		Benzo[k]fluoranthene	252	C20H12	000207-08-9	81
2		Benzo[b]fluoranthene	252	C20H12	000205-99-2	81
3		Benzo[a]pyrene	252	C20H12	000050-32-8	81
4		Benzo[e]pyrene	252	C20H12	000192-97-2	74
5		Benzo[a]pyrene	252	C20H12	000050-32-8	74



Data Path : Z:\svoasrv\HPCHEM1\BNA_G\Data\BG053124\
 Data File : BG061407.D
 Acq On : 1 Jun 2024 1:02
 Operator : MA/JU
 Sample : P2588-10
 Misc :
 ALS Vial : 18 Sample Multiplier: 1

Instrument :
 BNA_G
 ClientSampleId :
 BH5T9

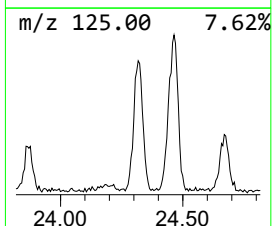
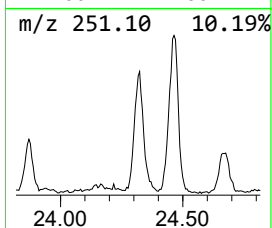
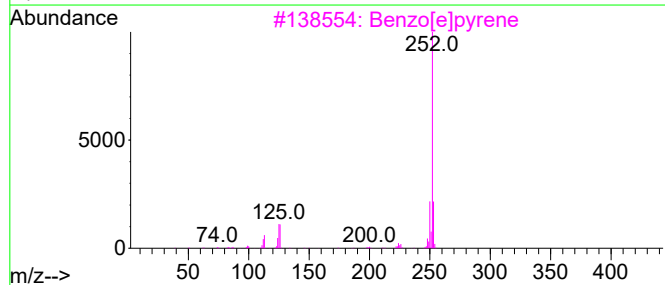
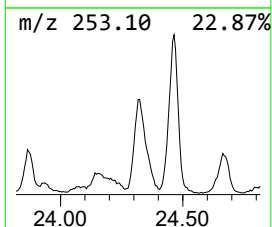
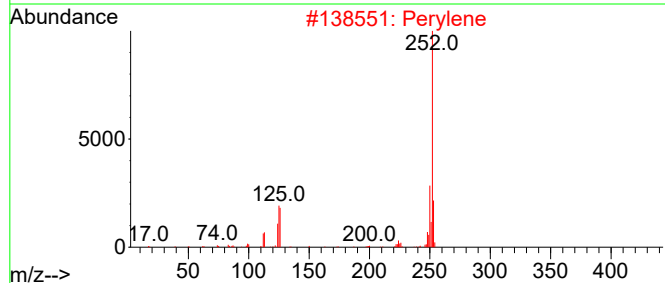
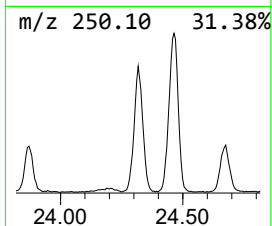
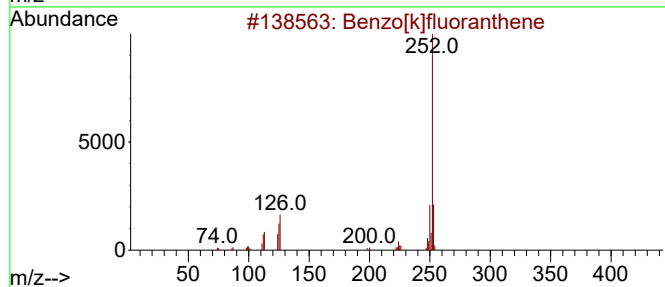
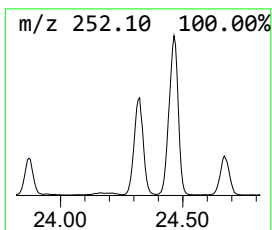
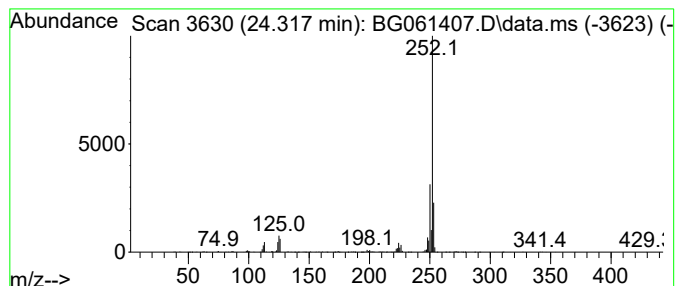
Quant Method : Z:\svoasrv\HPCHEM1\BNA_G\Methods\SFAM-EPA-BG052124.MA.M
 Quant Title : SVOA CALIBRATION

TIC Library : C:\DATABASE\NIST20.L
 TIC Integration Parameters: LSCINT.P

 Peak Number 38 Perylene Concentration Rank 3

R.T.	EstConc	Area	Relative to ISTD	R.T.
24.317	33.02 ng/ul	977249	Perylene-d12	24.599

Hit#	of 5	Tentative ID	MW	MolForm	CAS#	Qual
1		Benzo[k]fluoranthene	252	C20H12	000207-08-9	95
2		Perylene	252	C20H12	000198-55-0	95
3		Benzo[e]pyrene	252	C20H12	000192-97-2	95
4		Benzo[a]pyrene	252	C20H12	000050-32-8	93
5		Benzo[b]fluoranthene	252	C20H12	000205-99-2	91



Data Path : Z:\svoasrv\HPCHEM1\BNA_G\Data\BG053124\
 Data File : BG061407.D
 Acq On : 1 Jun 2024 1:02
 Operator : MA/JU
 Sample : P2588-10
 Misc :
 ALS Vial : 18 Sample Multiplier: 1

Instrument :
 BNA_G
 ClientSampleId :
 BH5T9

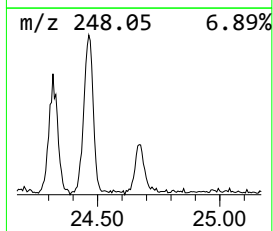
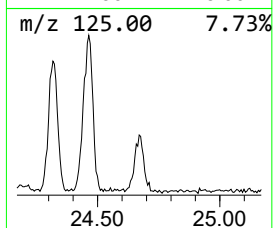
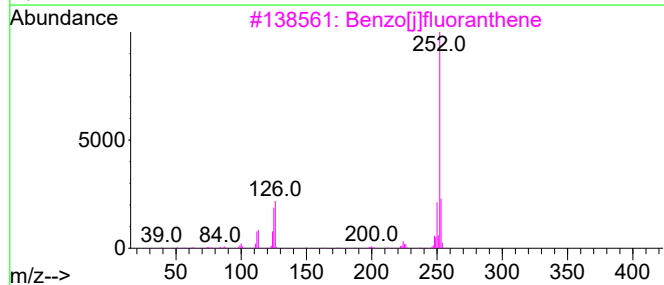
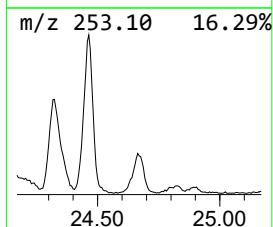
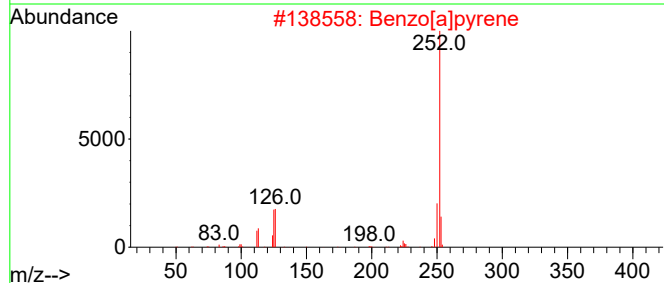
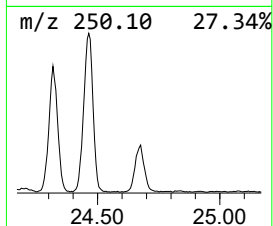
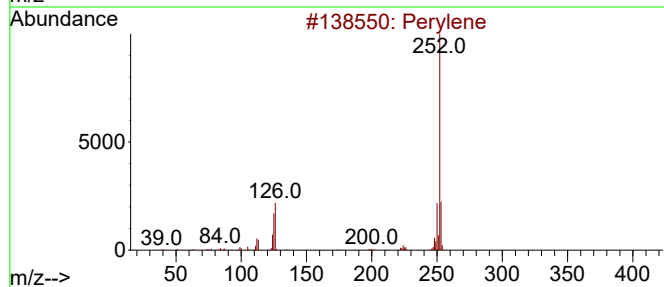
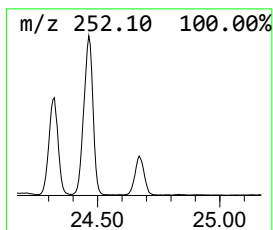
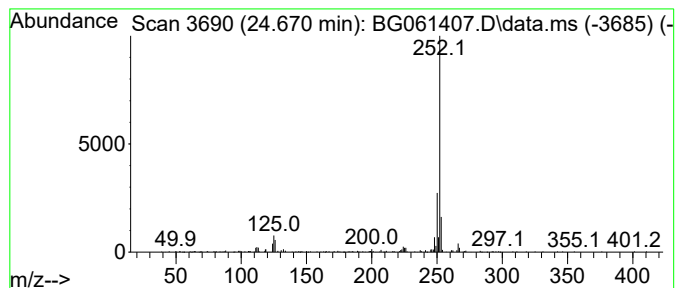
Quant Method : Z:\svoasrv\HPCHEM1\BNA_G\Methods\SFAM-EPA-BG052124.MA.M
 Quant Title : SVOA CALIBRATION

TIC Library : C:\DATABASE\NIST20.L
 TIC Integration Parameters: LSCINT.P

 Peak Number 39 Benzo[j]fluoranthene Concentration Rank 7

R.T.	EstConc	Area	Relative to ISTD	R.T.
24.670	18.98 ng/ul	561636	Perylene-d12	24.599

Hit#	of	5	Tentative ID	MW	MolForm	CAS#	Qual
1			Perylene	252	C20H12	000198-55-0	86
2			Benzo[a]pyrene	252	C20H12	000050-32-8	70
3			Benzo[j]fluoranthene	252	C20H12	000205-82-3	70
4			Benzo[b]fluoranthene	252	C20H12	000205-99-2	70
5			Benzo[e]pyrene	252	C20H12	000192-97-2	70



Data Path : Z:\svoasrv\HPCHEM1\BNA_G\Data\BG053124\
 Data File : BG061407.D
 Acq On : 1 Jun 2024 1:02
 Operator : MA/JU
 Sample : P2588-10
 Misc :
 ALS Vial : 18 Sample Multiplier: 1

Instrument :
 BNA_G
 ClientSampleId :
 BH5T9

Quant Method : Z:\svoasrv\HPCHEM1\BNA_G\Methods\SFAM-EPA-BG052124.MA.M
 Quant Title : SVOA CALIBRATION

TIC Library : C:\DATABASE\NIST20.L
 TIC Integration Parameters: LSCINT.P

TIC Top Hit name	RT	EstConc	Units	Response	--Internal Standard--			
					#	RT	Resp	Conc
3-Buten-2-one, ...	3.036	10.1	ng/ul	84703	1	7.872	168028	20.0
Butane, 2-metho...	3.077	275.4	ng/ul	2313710	1	7.872	168028	20.0
unknown-01	3.853	14.4	ng/ul	120826	1	7.872	168028	20.0
1-Phenoxypropan...	11.403	7.4	ng/ul	87828	2	10.663	236057	20.0
Dibenzofuran, 4...	15.851	6.6	ng/ul	124361	3	14.505	376007	20.0
6H-Dibenzo[b,d]...	15.998	7.0	ng/ul	150059	4	17.261	426608	20.0
9H-Fluorene, 1-...	16.562	3.7	ng/ul	78056	4	17.261	426608	20.0
2-[2-Phenylethe...	16.791	4.9	ng/ul	104976	4	17.261	426608	20.0
Benzo[c]cinnoline	16.914	7.4	ng/ul	157738	4	17.261	426608	20.0
Dibenzothiophene	17.073	6.8	ng/ul	144390	4	17.261	426608	20.0
Phenanthridine	17.449	3.9	ng/ul	82130	4	17.261	426608	20.0
2-Methyldibenzo...	17.837	3.7	ng/ul	79303	4	17.261	426608	20.0
Anthracene, 1-m...	18.136	23.0	ng/ul	489857	4	17.261	426608	20.0
Phenanthrene, 1...	18.183	27.9	ng/ul	594504	4	17.261	426608	20.0
Phenanthrene, 2...	18.265	10.5	ng/ul	224172	4	17.261	426608	20.0
4H-Cyclopenta[d...]	18.330	35.0	ng/ul	746493	4	17.261	426608	20.0
Phenanthrene, 4...	18.365	12.4	ng/ul	264692	4	17.261	426608	20.0
5,16[1',2']:8,1...	18.636	15.2	ng/ul	324402	4	17.261	426608	20.0
9,10-Anthracene...	18.683	11.9	ng/ul	254732	4	17.261	426608	20.0
Phenanthrene, 4...	18.877	7.2	ng/ul	152871	4	17.261	426608	20.0
Phenanthrene, 3...	18.929	4.9	ng/ul	104998	4	17.261	426608	20.0
[14]Annulene, 1...	18.971	5.1	ng/ul	108681	4	17.261	426608	20.0
Phenanthrene, 2...	19.053	20.1	ng/ul	428305	4	17.261	426608	20.0
unknown-02	19.118	8.7	ng/ul	184723	4	17.261	426608	20.0
Naphthalene, 1,...	19.147	4.0	ng/ul	84876	4	17.261	426608	20.0
Cyclopenta(def)...	19.200	14.8	ng/ul	315847	4	17.261	426608	20.0
7,12-Dihydroben...	23.266	6.6	ng/ul	195028	6	24.599	591840	20.0
Benzo[e]pyrene	23.871	11.0	ng/ul	325469	6	24.599	591840	20.0
Perylene	24.317	33.0	ng/ul	977249	6	24.599	591840	20.0
Benzo[j]fluoran...	24.670	19.0	ng/ul	561636	6	24.599	591840	20.0