

Data Path : Z:\HPCHEM1\BNA G\DATA\BG060216\  
 Data File : BG022150.D  
 Acq On : 2 Jun 2016 12:48  
 Operator : UM/SJ  
 Sample : H3302-07  
 Misc :  
 ALS Vial : 5 Sample Multiplier: 1

Instrument :  
 BNA\_G  
 ClientSampled :  
 CB203

Integration Parameters: LSCINT.P

Integrator: RTE  
 Smoothing : OFF  
 Sampling : 1  
 Start Thrs: 0.2  
 Stop Thrs : 0

Filtering: 5  
 Min Area: 0.1 % of largest Peak  
 Max Peaks: 100  
 Peak Location: TOP

If leading or trailing edge < 100 prefer < Baseline drop else tangent >  
 Peak separation: 5

Method : Z:\HPCHEM1\BNA G\METHODS\SOM02.2-EPA-BG052116.M  
 Title : SVOA CALIBRATION

Signal : TIC

peak #	R.T. min	first scan	max scan	last scan	PK TY	peak height	corr. area	corr. % max.	% of total
1	5.747	488	495	507	rBV	106105	263973	8.24%	0.365%
2	7.098	714	725	730	rVV3	126489	261829	8.17%	0.362%
3	7.269	748	754	762	rVV2	133949	371427	11.59%	0.514%
4	7.733	827	833	837	rVV	457277	832270	25.97%	1.151%
5	7.774	837	840	848	rVB	280175	467106	14.57%	0.646%
6	8.091	888	894	899	rVV	273823	526470	16.43%	0.728%
7	8.132	899	901	914	rVB4	107863	279580	8.72%	0.387%
8	8.244	914	920	926	rBV2	156377	308425	9.62%	0.427%
9	8.356	934	939	945	rVV3	105572	252721	7.88%	0.350%
10	8.673	977	993	1003	rVB5	244945	1082446	33.77%	1.497%
11	8.773	1003	1010	1018	rBV4	448126	1056535	32.96%	1.462%
12	9.084	1058	1063	1067	rBV	164217	288608	9.00%	0.399%
13	9.137	1067	1072	1079	rVV	217919	415817	12.97%	0.575%
14	9.237	1079	1089	1096	rVV	488876	974313	30.40%	1.348%
15	9.349	1096	1108	1119	rVB	785133	1750140	54.60%	2.421%
16	9.484	1119	1131	1139	rBV5	147902	451404	14.08%	0.624%
17	9.578	1139	1147	1162	rBV5	151235	525519	16.40%	0.727%
18	9.766	1173	1179	1184	rVV	423889	817784	25.51%	1.131%
19	9.825	1184	1189	1205	rVB	627617	1281669	39.99%	1.773%
20	10.024	1213	1223	1226	rBV3	156222	344325	10.74%	0.476%
21	10.066	1226	1230	1235	rVV2	141864	262435	8.19%	0.363%
22	10.136	1235	1242	1247	rVV2	197457	441942	13.79%	0.611%
23	10.195	1247	1252	1260	rVV5	188155	454995	14.20%	0.629%
24	10.289	1260	1268	1271	rVV2	142612	317933	9.92%	0.440%
25	10.342	1271	1277	1283	rVV3	503447	1143868	35.69%	1.582%
26	10.400	1283	1287	1293	rVV2	246733	483644	15.09%	0.669%
27	10.518	1299	1307	1313	rVV2	138401	396870	12.38%	0.549%
28	10.641	1322	1328	1335	rVB	170866	338497	10.56%	0.468%
29	10.900	1366	1372	1377	rVV2	261916	525858	16.41%	0.727%
30	10.959	1377	1382	1384	rVV	226902	443656	13.84%	0.614%
31	11.006	1386	1390	1397	rVV	415020	804233	25.09%	1.113%
32	12.333	1610	1616	1622	rVV2	196595	323594	10.10%	0.448%
33	12.598	1655	1661	1668	rVB	758305	1391887	43.42%	1.925%
34	12.821	1691	1699	1707	rVB	869818	1613826	50.35%	2.232%

Data Path : Z:\HPCHEM1\BNA G\DATA\BG060216\  
 Data File : BG022150.D  
 Acq On : 2 Jun 2016 12:48  
 Operator : UM/SJ  
 Sample : H3302-07  
 Misc :  
 ALS Vial : 5 Sample Multiplier: 1

Instrument :  
 BNA\_G  
 ClientSampleId :  
 CB203

## Integration Parameters: LSCINT.P

Integrator: RTE  
 Smoothing : OFF Filtering: 5  
 Sampling : 1 Min Area: 0.1 % of largest Peak  
 Start Thrs: 0.2 Max Peaks: 100  
 Stop Thrs : 0 Peak Location: TOP

If leading or trailing edge < 100 prefer < Baseline drop else tangent >  
 Peak separation: 5

Method : Z:\HPCHEM1\BNA G\METHODS\SOM02.2-EPA-BG052116.M  
 Title : SVOA CALIBRATION

35	13.561	1818	1825	1828	rBV	305832	548818	17.12%	0.759%
36	13.597	1828	1831	1840	rVB	303466	496162	15.48%	0.686%
37	13.802	1859	1866	1876	rVB3	241878	619102	19.32%	0.856%
38	13.937	1880	1889	1897	rVV2	336202	943153	29.43%	1.305%
39	14.084	1907	1914	1919	rBV	465566	899468	28.06%	1.244%
40	14.137	1919	1923	1930	rVV2	355883	819990	25.58%	1.134%
41	14.214	1931	1936	1941	rVV3	199563	379285	11.83%	0.525%
42	14.319	1949	1954	1963	rVV2	170186	399851	12.47%	0.553%
43	14.460	1972	1978	1990	rVB2	232267	661000	20.62%	0.914%
44	14.631	2002	2007	2016	rVB	516357	784344	24.47%	1.085%
45	14.725	2016	2023	2025	rBV3	150236	278617	8.69%	0.385%
46	14.760	2025	2029	2034	rVV2	316383	608829	18.99%	0.842%
47	14.825	2034	2040	2047	rVB	712672	1255316	39.16%	1.737%
48	15.160	2089	2097	2104	rBV2	369196	757593	23.64%	1.048%
49	15.242	2105	2111	2120	rVB7	226079	558065	17.41%	0.772%
50	15.477	2146	2151	2156	rVB	214777	320169	9.99%	0.443%
51	15.583	2164	2169	2173	rVB	950679	1410721	44.01%	1.952%
52	15.635	2173	2178	2183	rBV	216582	336328	10.49%	0.465%
53	15.753	2192	2198	2203	rVV	868866	1465785	45.73%	2.028%
54	15.806	2203	2207	2214	rVB2	173827	316804	9.88%	0.438%
55	15.982	2229	2237	2241	rBV	581346	1159690	36.18%	1.604%
56	16.164	2265	2268	2271	rVV	198251	312576	9.75%	0.432%
57	16.200	2271	2274	2279	rVB	205591	311655	9.72%	0.431%
58	16.446	2310	2316	2318	rBV	1407702	2468299	77.01%	3.414%
59	16.576	2333	2338	2341	rBV	270364	457928	14.29%	0.633%
60	16.693	2354	2358	2363	rBV2	241335	372763	11.63%	0.516%
61	16.781	2369	2373	2377	rBV3	150091	279137	8.71%	0.386%
62	16.899	2388	2393	2398	rVB3	189903	303332	9.46%	0.420%
63	16.952	2398	2402	2407	rVB2	189919	310621	9.69%	0.430%
64	17.234	2445	2450	2454	rBV	856872	1210411	37.76%	1.674%
65	17.286	2454	2459	2463	rVB	429013	678885	21.18%	0.939%
66	17.510	2492	2497	2501	rBV2	347182	594242	18.54%	0.822%
67	17.551	2501	2504	2509	rVV	263765	405293	12.64%	0.561%
68	17.604	2509	2513	2520	rVB	266421	395507	12.34%	0.547%
69	17.762	2535	2540	2548	rVB	583728	987601	30.81%	1.366%
70	17.845	2550	2554	2558	rBV3	162764	288410	9.00%	0.399%
71	17.968	2571	2575	2581	rVB	639415	906685	28.29%	1.254%

Data Path : Z:\HPCHEM1\BNA G\DATA\BG060216\  
 Data File : BG022150.D  
 Acq On : 2 Jun 2016 12:48  
 Operator : UM/SJ  
 Sample : H3302-07  
 Misc :  
 ALS Vial : 5 Sample Multiplier: 1

Instrument :  
 BNA\_G  
 ClientSampleId :  
 CB203

## Integration Parameters: LSCINT.P

Integrator: RTE  
 Smoothing : OFF  
 Sampling : 1  
 Start Thrs: 0.2  
 Stop Thrs : 0

Filtering: 5  
 Min Area: 0.1 % of largest Peak  
 Max Peaks: 100  
 Peak Location: TOP

If leading or trailing edge < 100 prefer < Baseline drop else tangent >  
 Peak separation: 5

Method : Z:\HPCHEM1\BNA G\METHODS\SOM02.2-EPA-BG052116.M  
 Title : SVOA CALIBRATION

72	18.262	2619	2625	2633	rVB6	119532	319680	9.97%	0.442%
73	18.655	2688	2692	2699	rBV	413737	582828	18.18%	0.806%
74	19.031	2752	2756	2760	rBV	263859	390148	12.17%	0.540%
75	19.137	2771	2774	2783	rVB	653331	965899	30.13%	1.336%
76	19.219	2783	2788	2792	rBV5	203527	434279	13.55%	0.601%
77	19.266	2792	2796	2803	rVV2	505118	1122280	35.01%	1.552%
78	19.372	2810	2814	2818	rVB3	386527	524722	16.37%	0.726%
79	19.431	2818	2824	2830	rBV2	1032588	1696185	52.92%	2.346%
80	19.554	2838	2845	2848	rBV2	498411	909253	28.37%	1.258%
81	19.590	2848	2851	2858	rVB	635805	792323	24.72%	1.096%
82	19.672	2860	2865	2871	rVB2	741426	1073242	33.48%	1.485%
83	19.737	2872	2876	2882	rVB2	711283	973468	30.37%	1.347%
84	19.825	2886	2891	2894	rBV	836515	1346265	42.00%	1.862%
85	19.883	2898	2901	2905	rVB2	935723	1200444	37.45%	1.661%
86	20.130	2939	2943	2949	rVB	804957	1205920	37.62%	1.668%
87	20.189	2950	2953	2956	rBV	260778	313803	9.79%	0.434%
88	20.383	2982	2986	2994	rBV4	423160	797747	24.89%	1.104%
89	20.706	3037	3041	3046	rBV3	298145	431980	13.48%	0.598%
90	20.876	3066	3070	3080	rVB2	734528	1186798	37.03%	1.642%
91	21.393	3155	3158	3164	rVB	401457	585004	18.25%	0.809%
92	21.646	3196	3201	3208	rVB	934163	1634099	50.98%	2.261%
93	21.787	3220	3225	3231	rVB2	382271	736812	22.99%	1.019%
94	21.952	3248	3253	3257	rBV	293739	476054	14.85%	0.659%
95	22.269	3303	3307	3314	rVB	302329	529207	16.51%	0.732%
96	22.569	3354	3358	3365	rVB	244403	443487	13.84%	0.613%
97	23.279	3475	3479	3487	rVB2	195865	370032	11.54%	0.512%
98	23.691	3545	3549	3558	rVB	194675	404662	12.62%	0.560%
99	25.101	3781	3789	3801	rVB3	238547	839113	26.18%	1.161%
100	31.805	4909	4930	4951	rVB3	538414	3205272	100.00%	4.434%

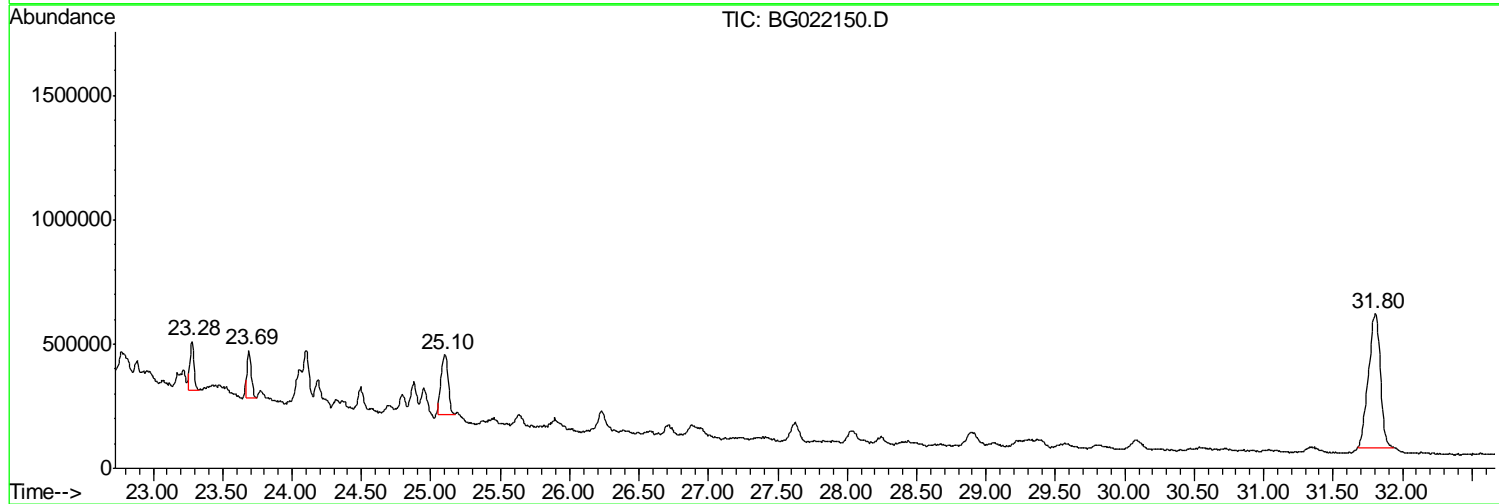
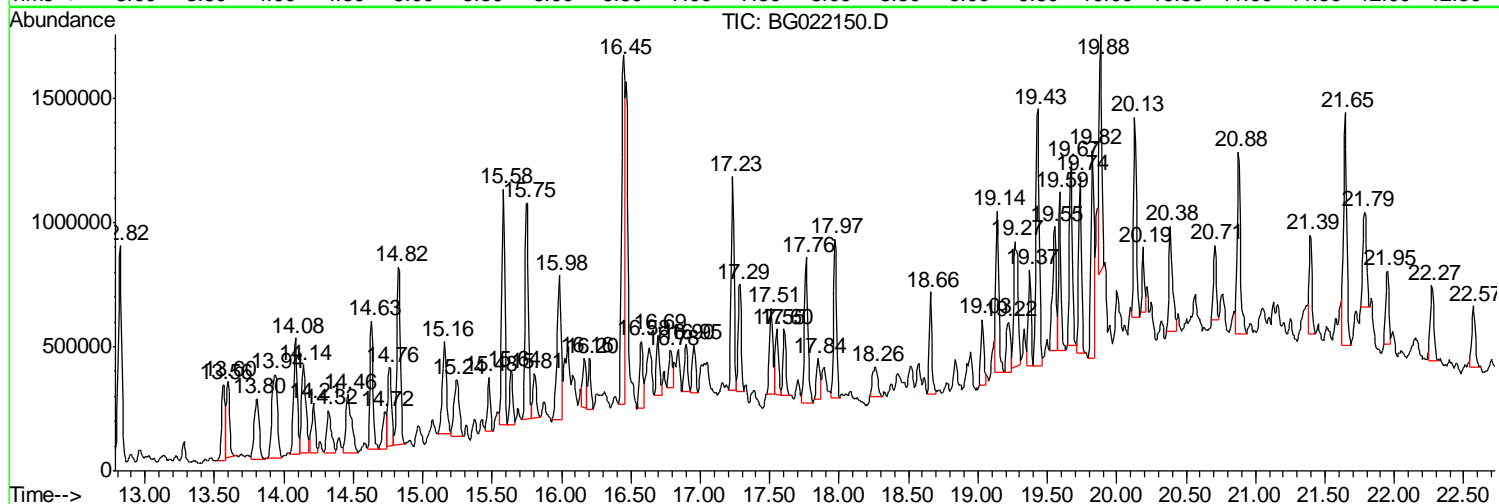
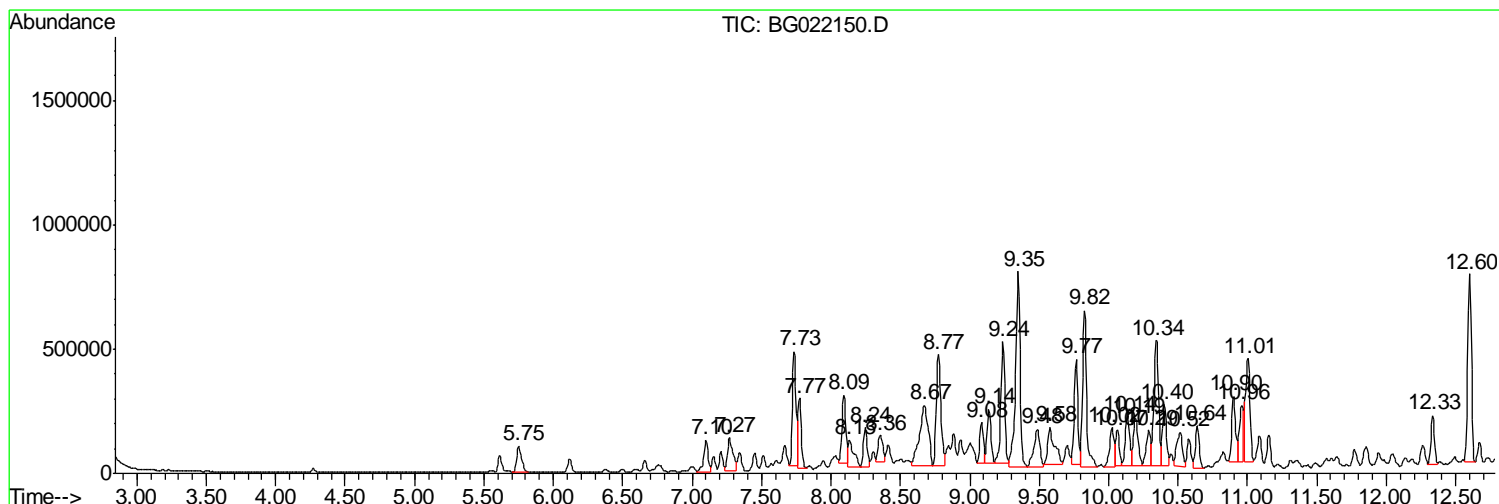
Sum of corrected areas: 72289040

Data Path : Z:\HPCHEM1\BNA G\DATA\BG060216\  
 Data File : BG022150.D  
 Acq On : 2 Jun 2016 12:48  
 Operator : UM/SJ  
 Sample : H3302-07  
 Misc :  
 ALS Vial : 5 Sample Multiplier: 1

Instrument :  
 BNA\_G  
 Client Sampled :  
 CB203

Quant Method : Z:\HPCHEM1\BNA G\METHODS\SOM02.2-EPA-BG052116.M  
 Quant Title : SVOA CALIBRATION

TIC Library : C:\Database\NIST11.L  
 TIC Integration Parameters: LSCINT.P



Data Path : Z:\HPCHEM1\BNA G\DATA\BG060216\  
 Data File : BG022150.D  
 Acq On : 2 Jun 2016 12:48  
 Operator : UM/SJ  
 Sample : H3302-07  
 Misc :  
 ALS Vial : 5 Sample Multiplier: 1

Instrument :  
 BNA\_G  
 ClientSampleID :  
 CB203

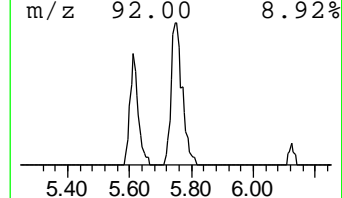
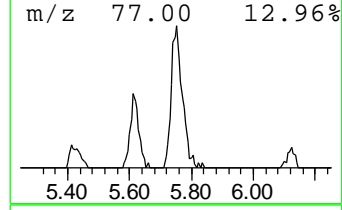
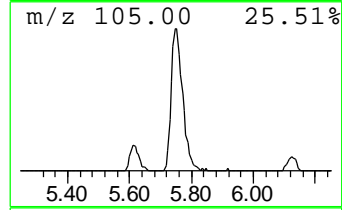
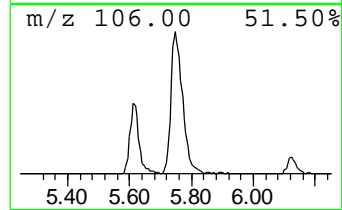
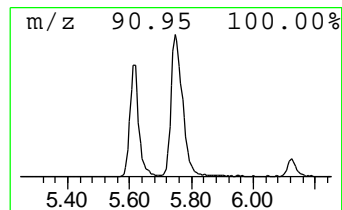
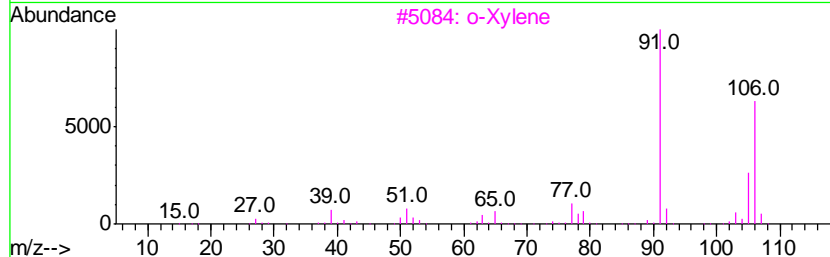
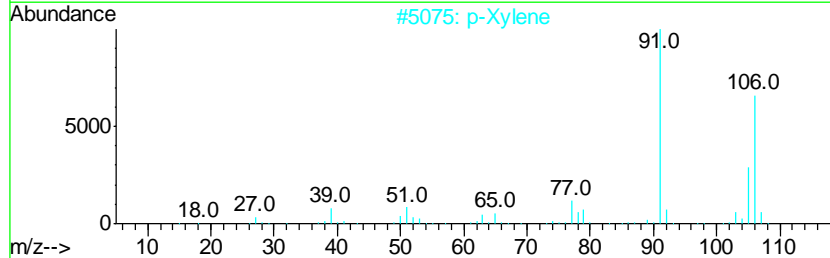
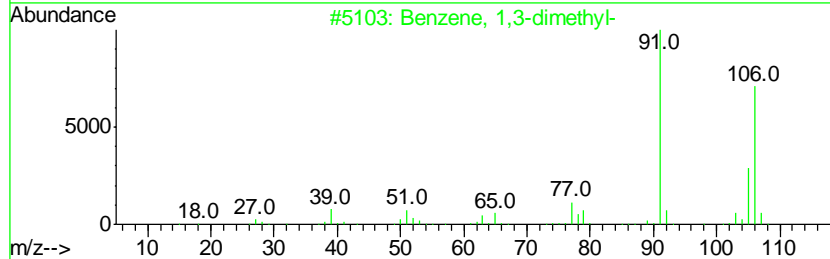
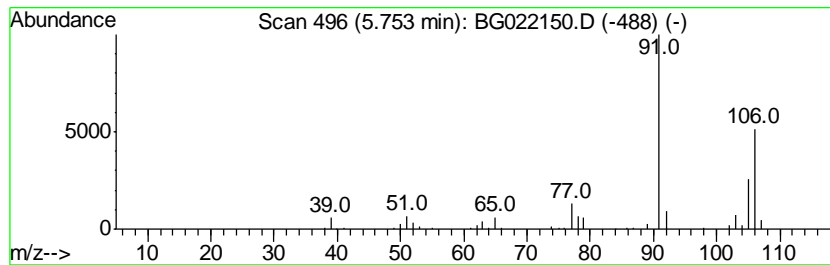
Quant Method : Z:\HPCHEM1\BNA G\METHODS\SOM02.2-EPA-BG052116.M  
 Quant Title : SVOA CALIBRATION

TIC Library : C:\Database\NIST11.L  
 TIC Integration Parameters: LSCINT.P

\*\*\*\*\*  
 Peak Number 1 Benzene, 1,3-dimethyl- Concentration Rank 41

R.T.	EstConc	Area	Relative to ISTD	R.T.
5.75	18.88 ng/ul	263973	1,4-Dichlorobenzene-d4	8.13

Hit#	of	Tentative ID	MW	MolForm	CAS#	Qual
1	5	Benzene, 1,3-dimethyl-	106	C8H10	000108-38-3	95
2		p-Xylene	106	C8H10	000106-42-3	95
3		o-Xylene	106	C8H10	000095-47-6	94
4		p-Xylene	106	C8H10	000106-42-3	94
5		Benzene, 1,3-dimethyl-	106	C8H10	000108-38-3	94



Data Path : Z:\HPCHEM1\BNA G\DATA\BG060216\  
 Data File : BG022150.D  
 Acq On : 2 Jun 2016 12:48  
 Operator : UM/SJ  
 Sample : H3302-07  
 Misc :  
 ALS Vial : 5 Sample Multiplier: 1

Instrument :  
 BNA\_G  
 ClientSampleID :  
 CB203

Quant Method : Z:\HPCHEM1\BNA G\METHODS\SOM02.2-EPA-BG052116.M  
 Quant Title : SVOA CALIBRATION

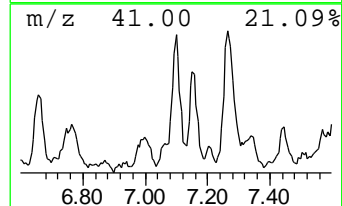
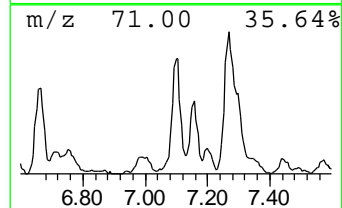
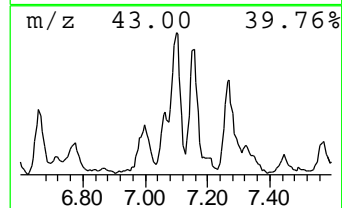
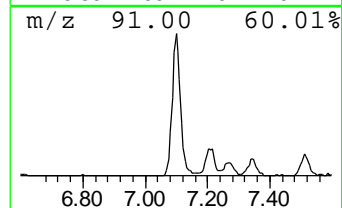
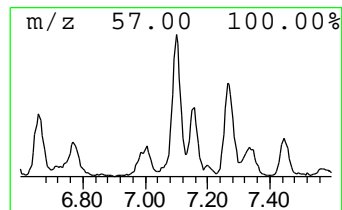
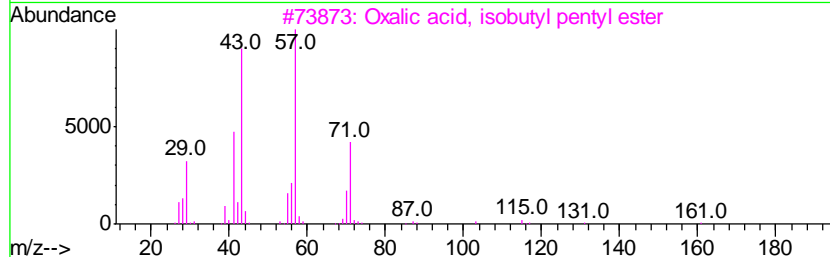
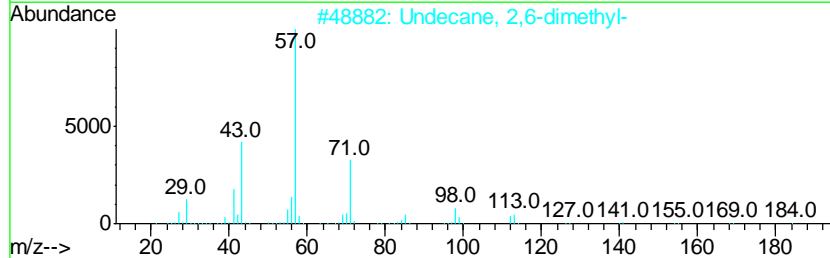
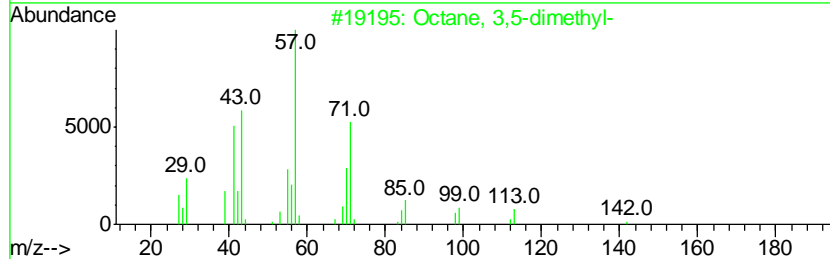
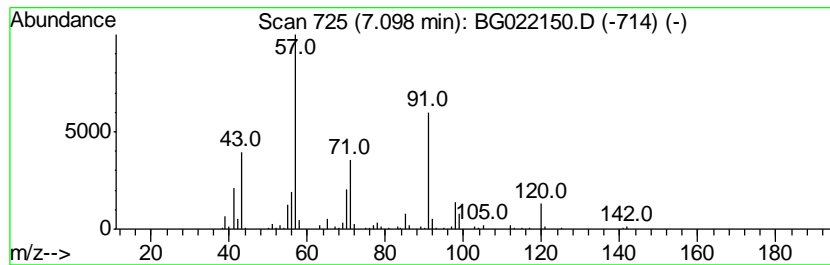
TIC Library : C:\Database\NIST11.L  
 TIC Integration Parameters: LSCINT.P

\*\*\*\*\*  
 Peak Number 2 (DEL) Alkane: Straight-Chai... Concentration Rank 42

R.T.	EstConc	Area	Relative to ISTD	R.T.
7.10	18.73 ng/ul	261829	1,4-Dichlorobenzene-d4	8.13

Hit#	of	Tentative ID	MW	MolForm	CAS#	Qual
1	5	Octane, 3,5-dimethyl-	142	C10H22	015869-93-9	52
2		Undecane, 2,6-dimethyl-	184	C13H28	017301-23-4	50
3		Oxalic acid, isobutyl pentyl ester	216	C11H20O4	1000309-37-0	47
4		Hexane, 3-ethyl-2,5-dimethyl-	142	C10H22	052897-04-8	47
5		Decane, 2,6,6-trimethyl-	184	C13H28	062108-24-1	47



Data Path : Z:\HPCHEM1\BNA G\DATA\BG060216\  
 Data File : BG022150.D  
 Acq On : 2 Jun 2016 12:48  
 Operator : UM/SJ  
 Sample : H3302-07  
 Misc :  
 ALS Vial : 5 Sample Multiplier: 1

Instrument :  
 BNA\_G  
 ClientSampleId :  
 CB203

Quant Method : Z:\HPCHEM1\BNA G\METHODS\SOM02.2-EPA-BG052116.M  
 Quant Title : SVOA CALIBRATION

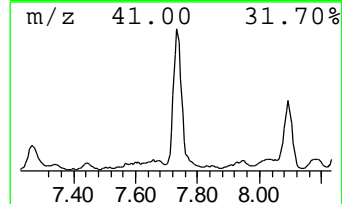
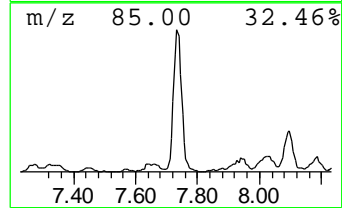
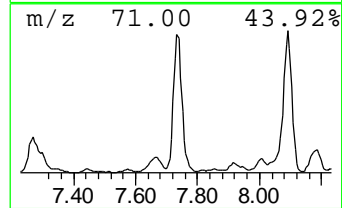
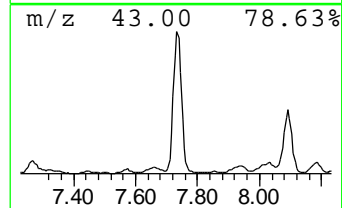
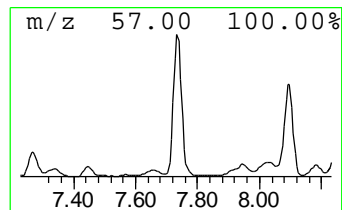
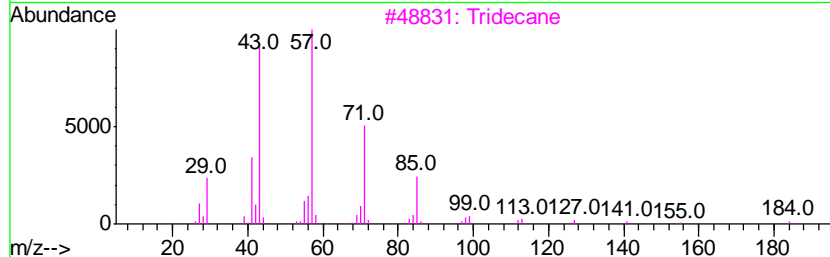
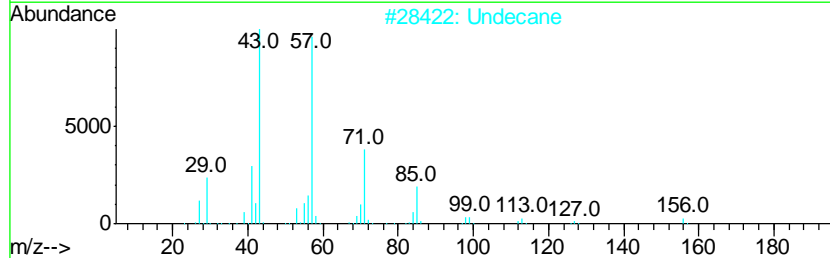
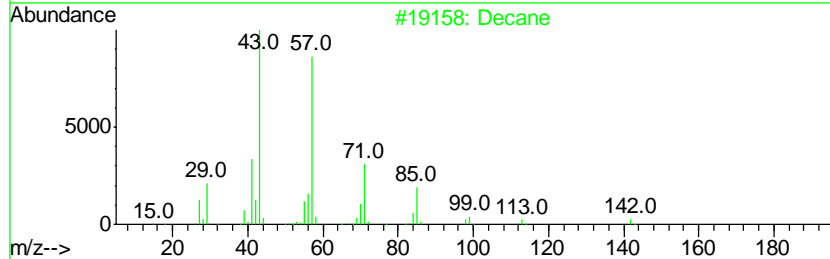
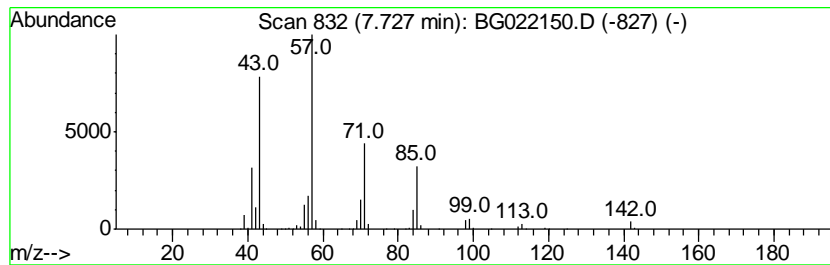
TIC Library : C:\Database\NIST11.L  
 TIC Integration Parameters: LSCINT.P

\*\*\*\*\*  
 Peak Number 3 (DEL) Alkane: Straight-Chai... Concentration Rank 7

R.T.	EstConc	Area	Relative to ISTD	R.T.
7.73	59.54 ng/ul	832270	1,4-Dichlorobenzene-d4	8.13

Hit#	of	Tentative ID	MW	MolForm	CAS#	Qual
1	5	Decane	142	C10H22	000124-18-5	83
2		Undecane	156	C11H24	001120-21-4	78
3		Tridecane	184	C13H28	000629-50-5	78
4		Hexadecane	226	C16H34	000544-76-3	72
5		1-Iodo-2-methylundecane	296	C12H25I	073105-67-6	72



Data Path : Z:\HPCHEM1\BNA G\DATA\BG060216\  
 Data File : BG022150.D  
 Acq On : 2 Jun 2016 12:48  
 Operator : UM/SJ  
 Sample : H3302-07  
 Misc :  
 ALS Vial : 5 Sample Multiplier: 1

Instrument :  
 BNA\_G  
 ClientSampleID :  
 CB203

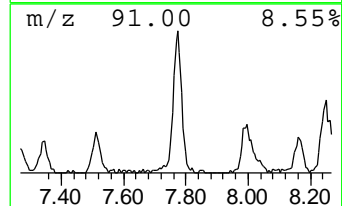
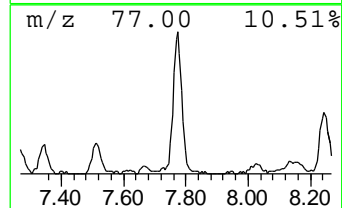
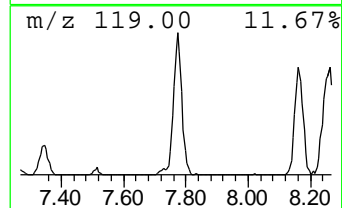
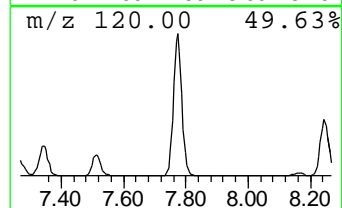
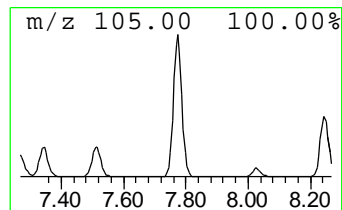
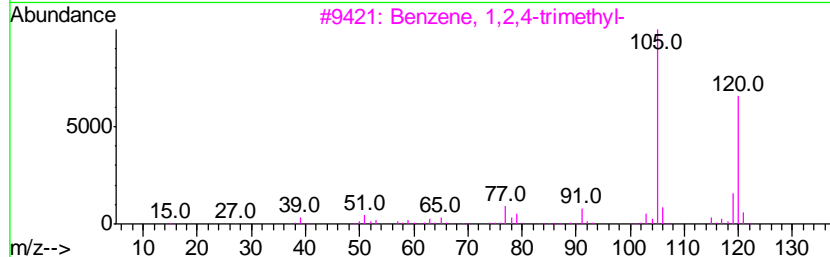
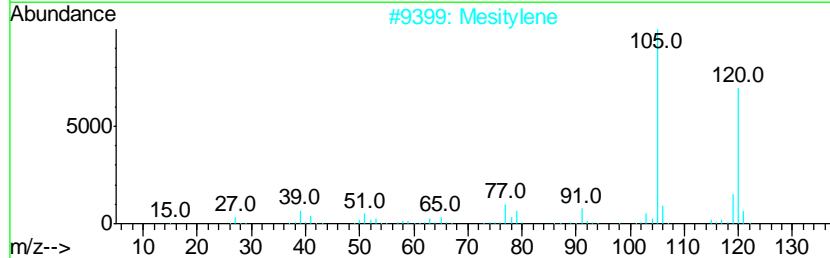
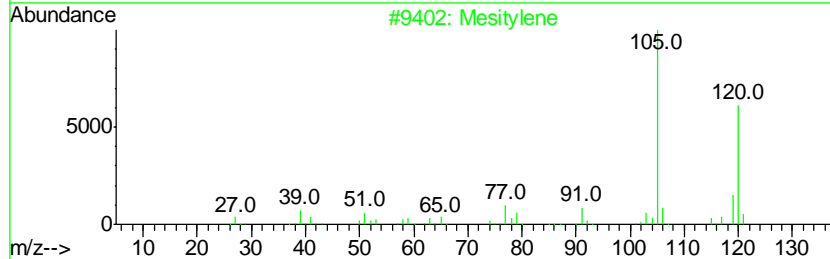
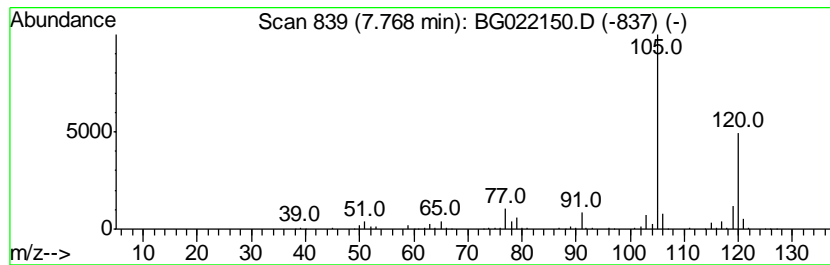
Quant Method : Z:\HPCHEM1\BNA G\METHODS\SOM02.2-EPA-BG052116.M  
 Quant Title : SVOA CALIBRATION

TIC Library : C:\Database\NIST11.L  
 TIC Integration Parameters: LSCINT.P

\*\*\*\*\*  
 Peak Number 4 Mesitylene Concentration Rank 17

R.T.	EstConc	Area	Relative to ISTD	R.T.
7.77	33.41 ng/ul	467106	1,4-Dichlorobenzene-d4	8.13

Hit#	of	Tentative ID	MW	MolForm	CAS#	Qual
1	5	Mesitylene	120	C9H12	000108-67-8	95
2		Mesitylene	120	C9H12	000108-67-8	95
3		Benzene, 1,2,4-trimethyl-	120	C9H12	000095-63-6	95
4		Mesitylene	120	C9H12	000108-67-8	94
5		Benzene, 1,2,3-trimethyl-	120	C9H12	000526-73-8	94





Data Path : Z:\HPCHEM1\BNA G\DATA\BG060216\  
 Data File : BG022150.D  
 Acq On : 2 Jun 2016 12:48  
 Operator : UM/SJ  
 Sample : H3302-07  
 Misc :  
 ALS Vial : 5 Sample Multiplier: 1

Instrument :  
 BNA\_G  
 ClientSampleId :  
 CB203

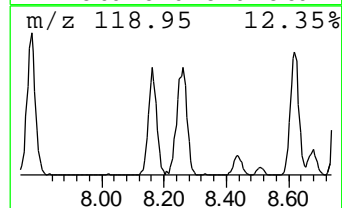
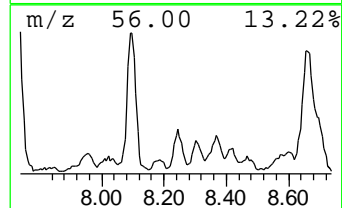
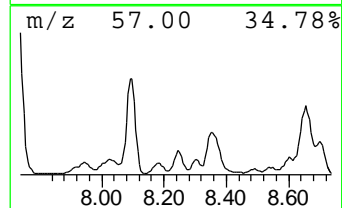
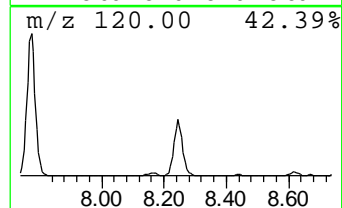
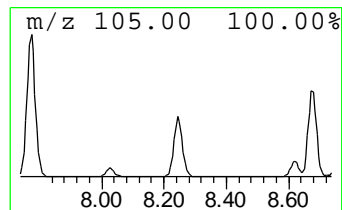
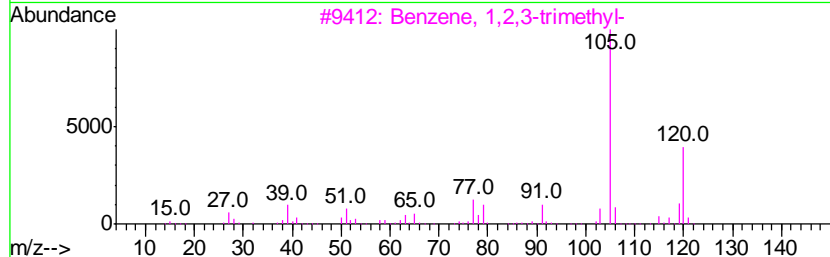
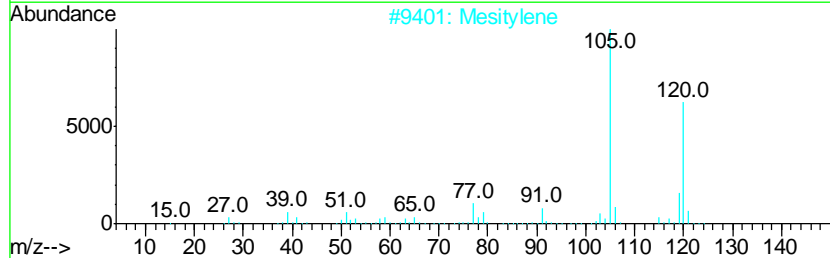
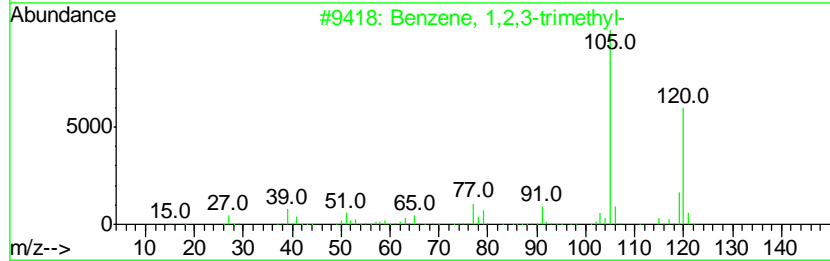
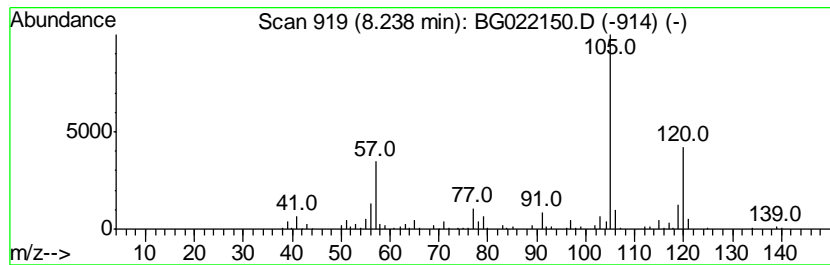
Quant Method : Z:\HPCHEM1\BNA G\METHODS\SOM02.2-EPA-BG052116.M  
 Quant Title : SVOA CALIBRATION

TIC Library : C:\Database\NIST11.L  
 TIC Integration Parameters: LSCINT.P

\*\*\*\*\*  
 Peak Number 5 Benzene, 1,2,3-trimethyl- Concentration Rank 33

R.T.	EstConc	Area	Relative to ISTD	R.T.
8.24	22.06 ng/ul	308425	1,4-Dichlorobenzene-d4	8.13

Hit#	of	Tentative ID	MW	MolForm	CAS#	Qual
1	5	Benzene, 1,2,3-trimethyl-	120	C9H12	000526-73-8	97
2		Mesitylene	120	C9H12	000108-67-8	94
3		Benzene, 1,2,3-trimethyl-	120	C9H12	000526-73-8	93
4		Benzene, 1,2,4-trimethyl-	120	C9H12	000095-63-6	91
5		Mesitylene	120	C9H12	000108-67-8	91



Data Path : Z:\HPCHEM1\BNA G\DATA\BG060216\  
 Data File : BG022150.D  
 Acq On : 2 Jun 2016 12:48  
 Operator : UM/SJ  
 Sample : H3302-07  
 Misc :  
 ALS Vial : 5 Sample Multiplier: 1

Instrument :  
 BNA\_G  
 ClientSampleID :  
 CB203

Quant Method : Z:\HPCHEM1\BNA G\METHODS\SOM02.2-EPA-BG052116.M  
 Quant Title : SVOA CALIBRATION

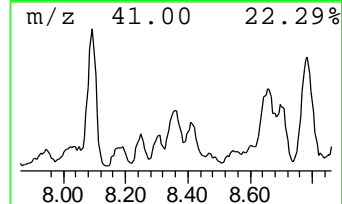
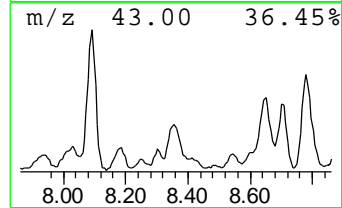
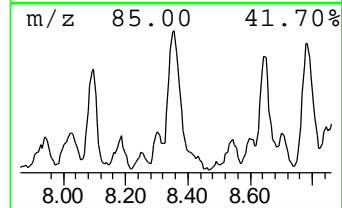
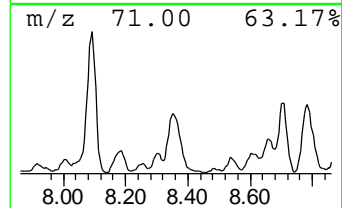
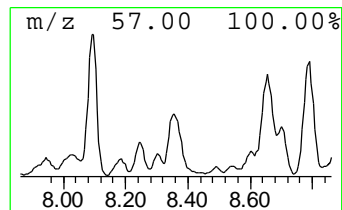
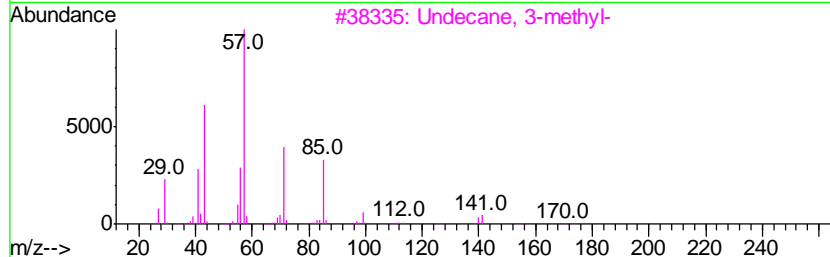
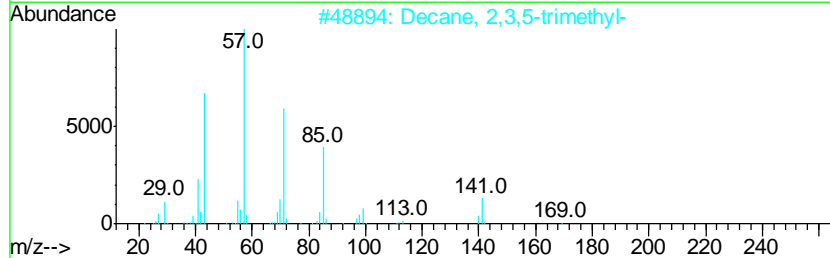
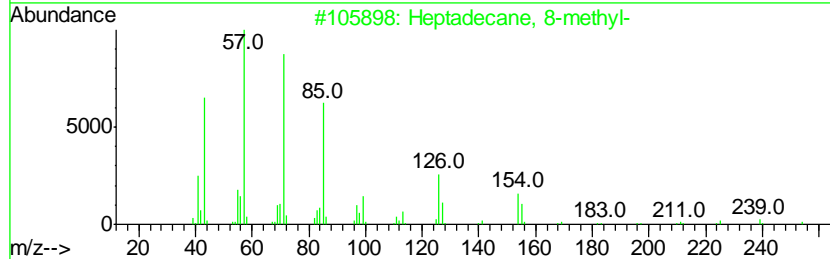
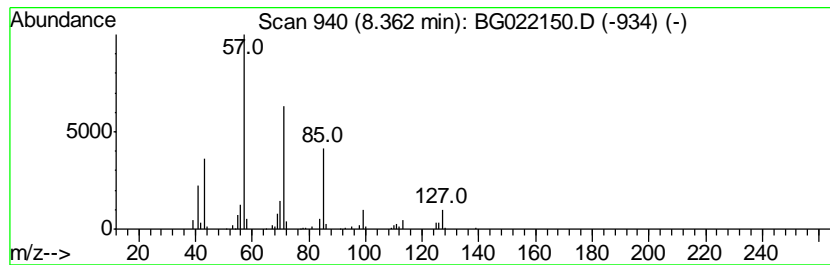
TIC Library : C:\Database\NIST11.L  
 TIC Integration Parameters: LSCINT.P

\*\*\*\*\*  
 Peak Number 6 (DEL) Alkane: Straight-Chai... Concentration Rank 44

R.T.	EstConc	Area	Relative to ISTD	R.T.
8.36	18.08 ng/ul	252721	1,4-Dichlorobenzene-d4	8.13

Hit#	of	Tentative ID	MW	MolForm	CAS#	Qual
1	5	Heptadecane, 8-methyl-	254	C18H38	013287-23-5	78
2		Decane, 2,3,5-trimethyl-	184	C13H28	062238-11-3	78
3		Undecane, 3-methyl-	170	C12H26	001002-43-3	72
4		Tridecane, 2,5-dimethyl-	212	C15H32	056292-66-1	64
5		1-Octadecanesulphonyl chloride	352	C18H37ClO2S	1000342-70-4	64



Data Path : Z:\HPCHEM1\BNA G\DATA\BG060216\  
 Data File : BG022150.D  
 Acq On : 2 Jun 2016 12:48  
 Operator : UM/SJ  
 Sample : H3302-07  
 Misc :  
 ALS Vial : 5 Sample Multiplier: 1

Instrument :  
 BNA\_G  
 ClientSampled :  
 CB203

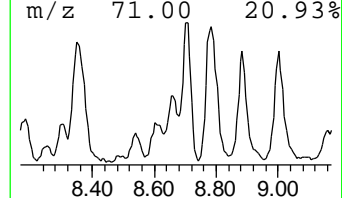
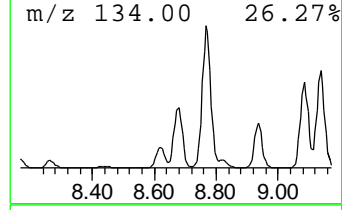
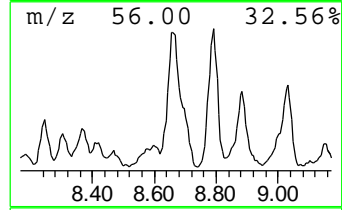
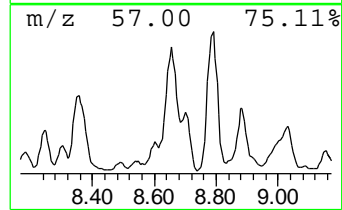
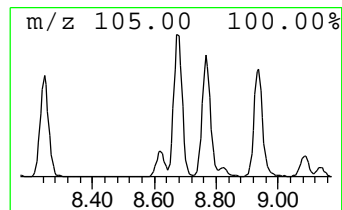
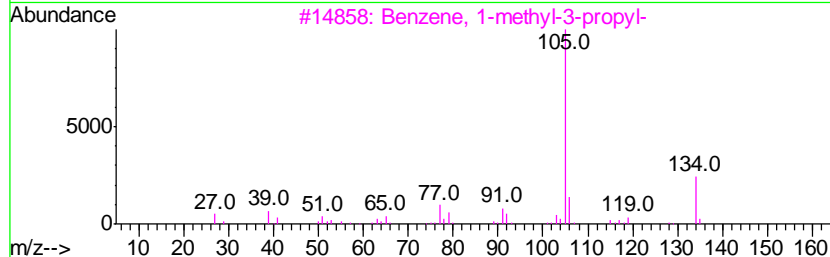
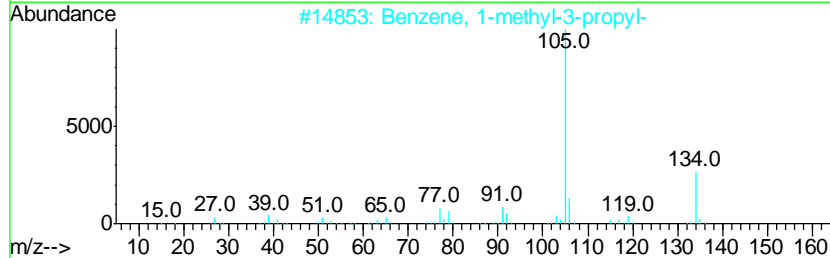
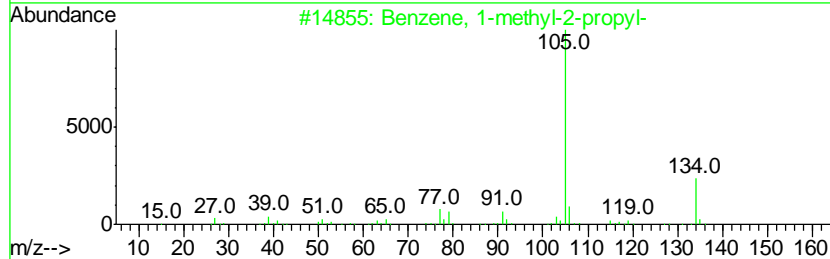
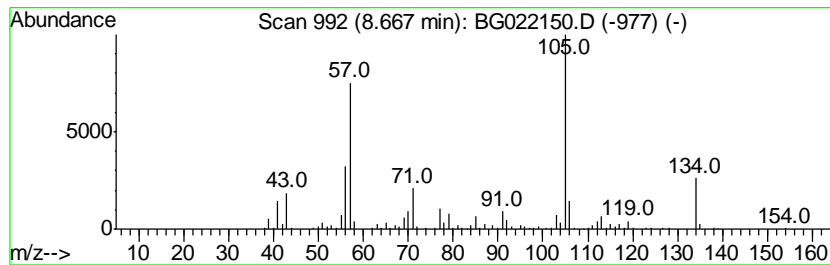
Quant Method : Z:\HPCHEM1\BNA G\METHODS\SOM02.2-EPA-BG052116.M  
 Quant Title : SVOA CALIBRATION

TIC Library : C:\Database\NIST11.L  
 TIC Integration Parameters: LSCINT.P

\*\*\*\*\*  
 Peak Number 7 Benzene, 1-methyl-2-propyl- Concentration Rank 2

R.T.	EstConc	Area	Relative to ISTD	R.T.
8.67	77.43 ng/ul	1082450	1,4-Dichlorobenzene-d4	8.13

Hit#	of	Tentative ID	MW	MolForm	CAS#	Qual
1	5	Benzene, 1-methyl-2-propyl-	134	C10H14	001074-17-5	92
2		Benzene, 1-methyl-3-propyl-	134	C10H14	001074-43-7	92
3		Benzene, 1-methyl-3-propyl-	134	C10H14	001074-43-7	70
4		Benzene, (1-methylpropyl)-	134	C10H14	000135-98-8	64
5		Benzene, 1-methyl-4-propyl-	134	C10H14	001074-55-1	64



Data Path : Z:\HPCHEM1\BNA G\DATA\BG060216\  
 Data File : BG022150.D  
 Acq On : 2 Jun 2016 12:48  
 Operator : UM/SJ  
 Sample : H3302-07  
 Misc :  
 ALS Vial : 5 Sample Multiplier: 1

Instrument :  
 BNA\_G  
 ClientSampled :  
 CB203

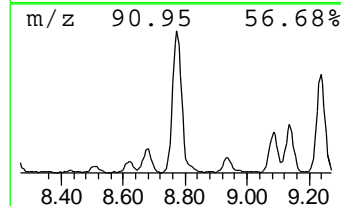
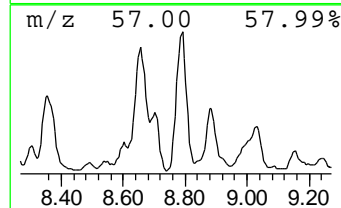
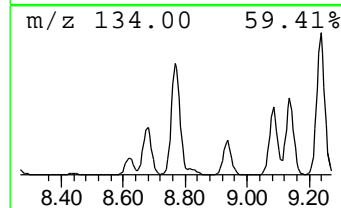
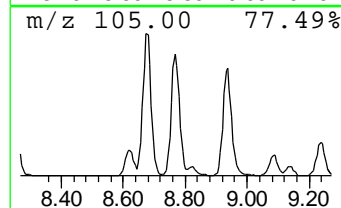
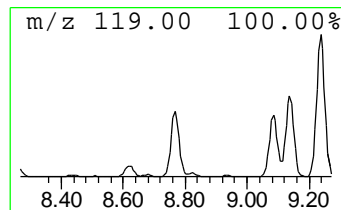
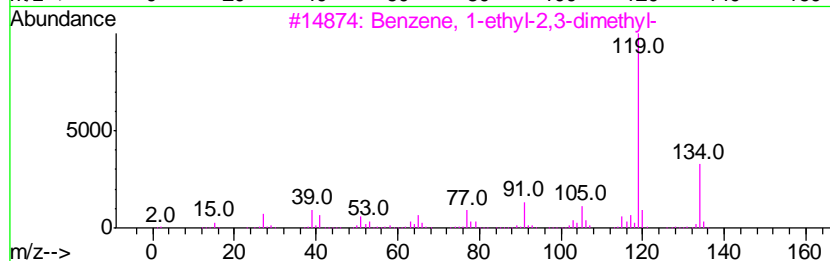
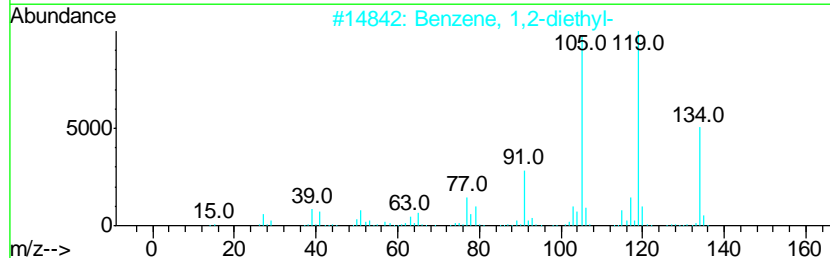
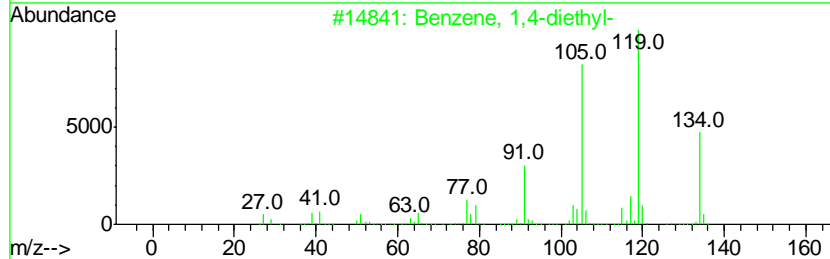
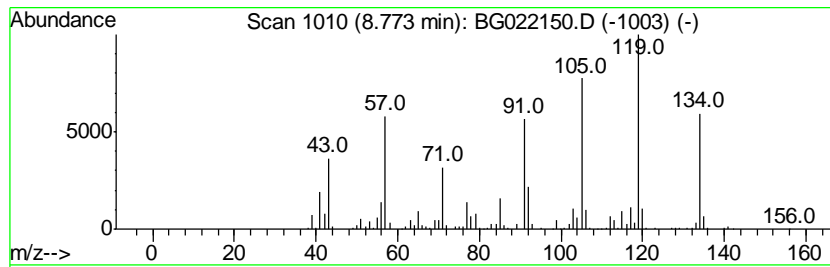
Quant Method : Z:\HPCHEM1\BNA G\METHODS\SOM02.2-EPA-BG052116.M  
 Quant Title : SVOA CALIBRATION

TIC Library : C:\Database\NIST11.L  
 TIC Integration Parameters: LSCINT.P

\*\*\*\*\*  
 Peak Number 8 Benzene, 1,4-diethyl- Concentration Rank 4

R.T.	EstConc	Area	Relative to ISTD	R.T.
8.77	75.58 ng/ul	1056540	1,4-Dichlorobenzene-d4	8.13

Hit#	of	Tentative ID	MW	MolForm	CAS#	Qual
1	5	Benzene, 1,4-diethyl-	134	C10H14	000105-05-5	95
2		Benzene, 1,2-diethyl-	134	C10H14	000135-01-3	94
3		Benzene, 1-ethyl-2,3-dimethyl-	134	C10H14	000933-98-2	89
4		Benzene, 1,4-diethyl-	134	C10H14	000105-05-5	89
5		Benzene, 1,3-diethyl-	134	C10H14	000141-93-5	89



Data Path : Z:\HPCHEM1\BNA G\DATA\BG060216\  
 Data File : BG022150.D  
 Acq On : 2 Jun 2016 12:48  
 Operator : UM/SJ  
 Sample : H3302-07  
 Misc :  
 ALS Vial : 5 Sample Multiplier: 1

Instrument :  
 BNA\_G  
 ClientSampled :  
 CB203

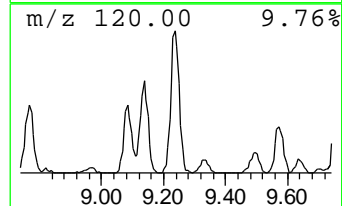
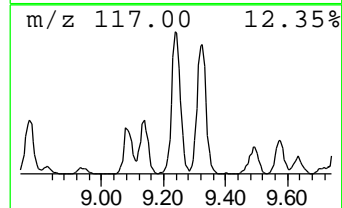
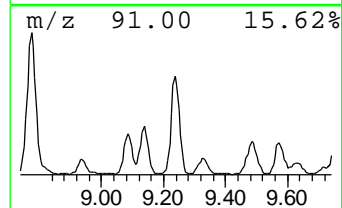
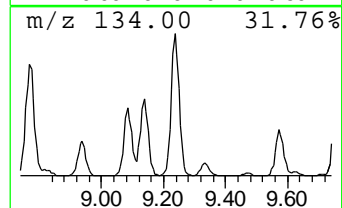
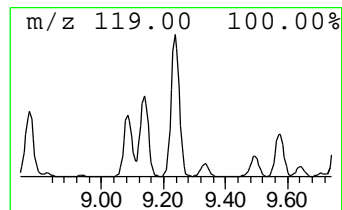
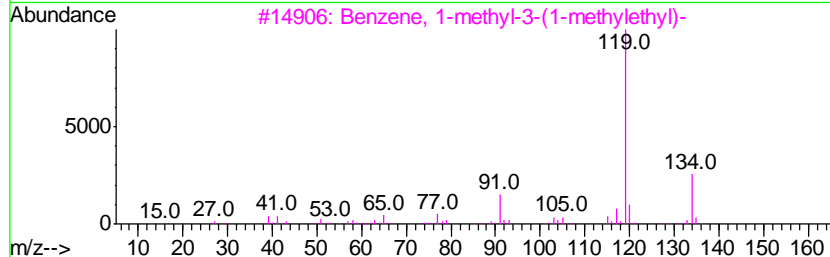
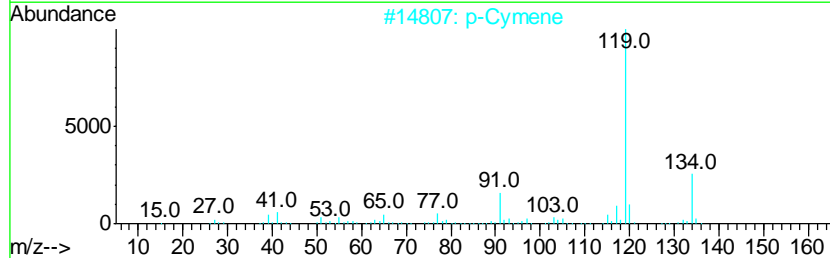
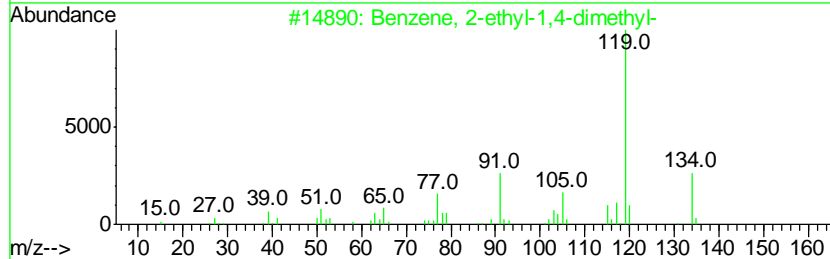
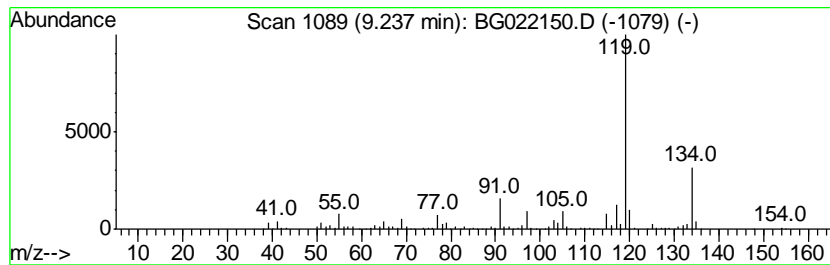
Quant Method : Z:\HPCHEM1\BNA G\METHODS\SOM02.2-EPA-BG052116.M  
 Quant Title : SVOA CALIBRATION

TIC Library : C:\Database\NIST11.L  
 TIC Integration Parameters: LSCINT.P

\*\*\*\*\*  
 Peak Number 11 Benzene, 2-ethyl-1,4-dimethyl- Concentration Rank 6

R.T.	EstConc	Area	Relative to ISTD	R.T.
9.24	69.70 ng/ul	974313	1,4-Dichlorobenzene-d4	8.13

Hit#	of	Tentative ID	MW	MolForm	CAS#	Qual
1	5	Benzene, 2-ethyl-1,4-dimethyl-	134	C10H14	001758-88-9	95
2		p-Cymene	134	C10H14	000099-87-6	94
3		Benzene, 1-methyl-3-(1-methyleth...	134	C10H14	000535-77-3	94
4		Benzene, 1-methyl-3-(1-methyleth...	134	C10H14	000535-77-3	94
5		Benzene, 1-ethyl-2,3-dimethyl-	134	C10H14	000933-98-2	94



Data Path : Z:\HPCHEM1\BNA G\DATA\BG060216\  
 Data File : BG022150.D  
 Acq On : 2 Jun 2016 12:48  
 Operator : UM/SJ  
 Sample : H3302-07  
 Misc :  
 ALS Vial : 5 Sample Multiplier: 1

Instrument :  
 BNA\_G  
 ClientSampled :  
 CB203

Quant Method : Z:\HPCHEM1\BNA G\METHODS\SOM02.2-EPA-BG052116.M  
 Quant Title : SVOA CALIBRATION

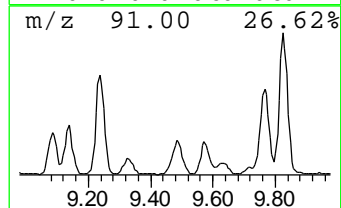
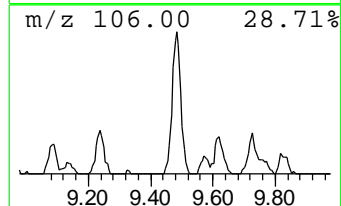
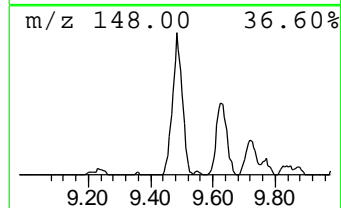
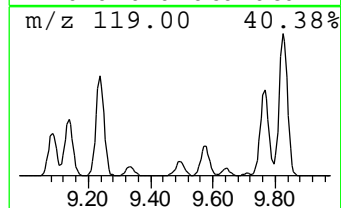
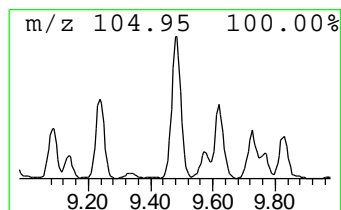
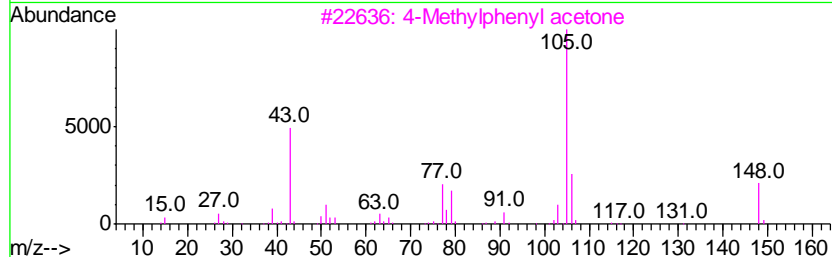
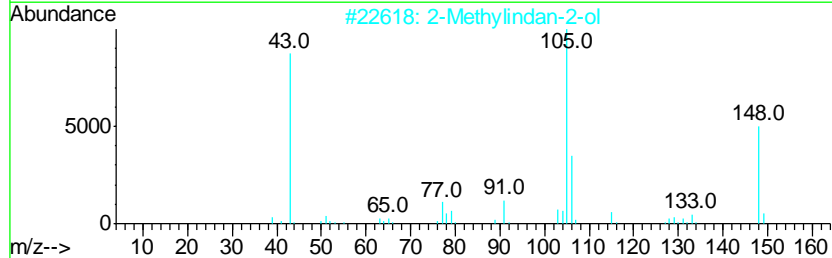
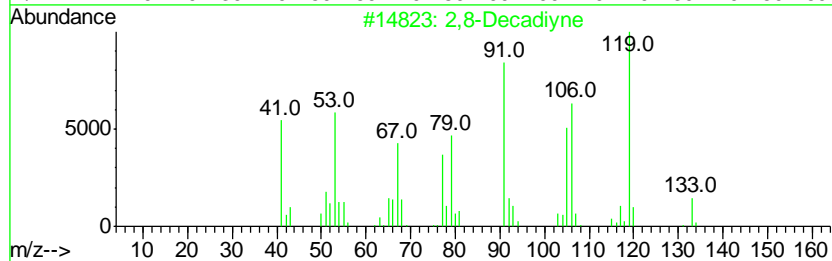
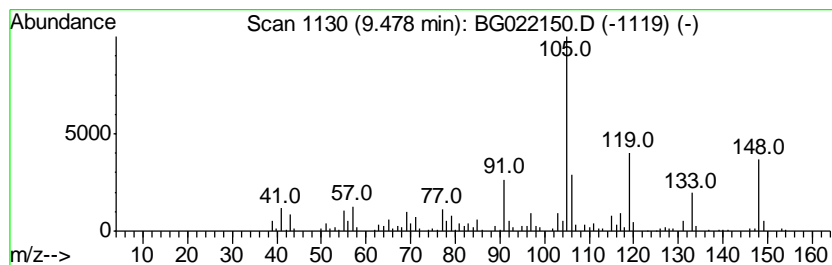
TIC Library : C:\Database\NIST11.L  
 TIC Integration Parameters: LSCINT.P

\*\*\*\*\*  
 Peak Number 12 2,8-Decadiyne Concentration Rank 21

R.T.	EstConc	Area	Relative to ISTD	R.T.
9.48	32.29 ng/ul	451404	1,4-Dichlorobenzene-d4	8.13

Hit#	of	Tentative ID	MW	MolForm	CAS#	Qual
1	5	2,8-Decadiyne	134	C10H14	004116-93-2	60
2		2-Methylindan-2-ol	148	C10H12O	033223-84-6	49
3		4-Methylphenyl acetone	148	C10H12O	002096-86-8	45
4		Benzene, 1-methyl-4-(2-methylpro...	148	C11H16	005161-04-6	43
5		2-Ethyl[1,3]dithiane	148	C6H12S2	006007-23-4	43



Data Path : Z:\HPCHEM1\BNA G\DATA\BG060216\  
 Data File : BG022150.D  
 Acq On : 2 Jun 2016 12:48  
 Operator : UM/SJ  
 Sample : H3302-07  
 Misc :  
 ALS Vial : 5 Sample Multiplier: 1

Instrument :  
 BNA\_G  
 ClientSampleID :  
 CB203

Quant Method : Z:\HPCHEM1\BNA G\METHODS\SOM02.2-EPA-BG052116.M  
 Quant Title : SVOA CALIBRATION

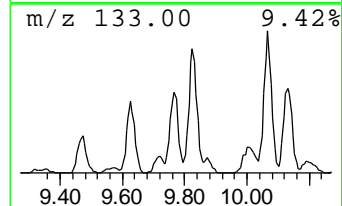
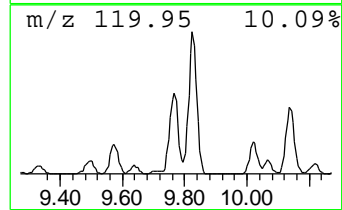
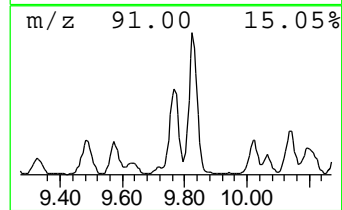
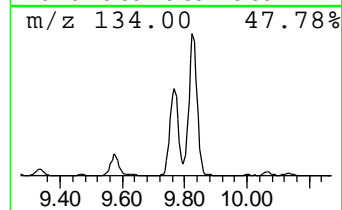
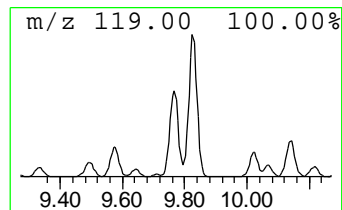
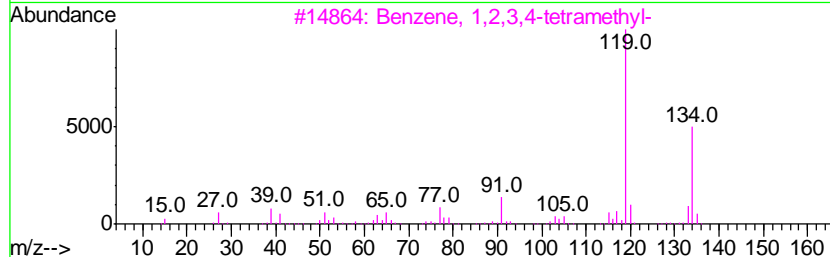
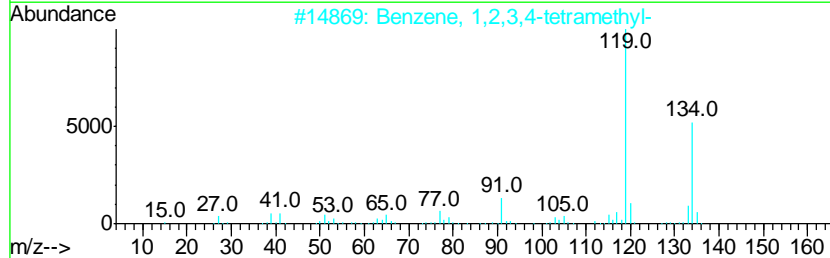
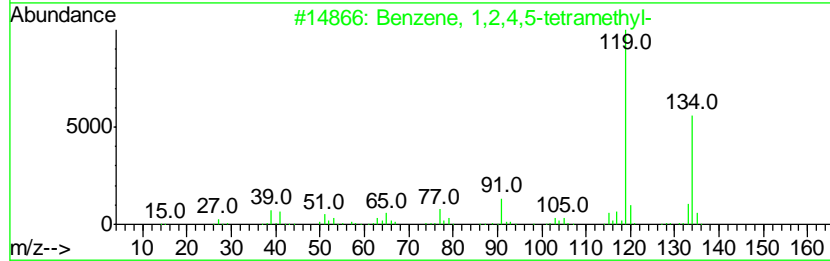
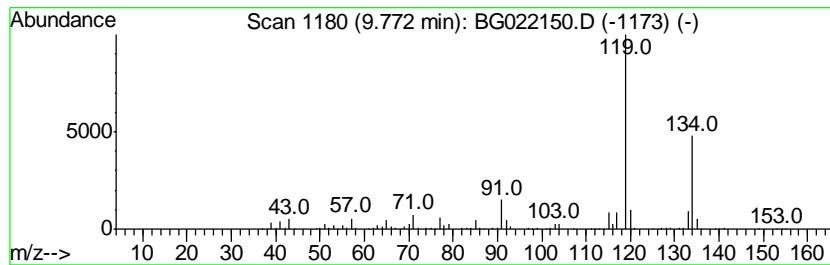
TIC Library : C:\Database\NIST11.L  
 TIC Integration Parameters: LSCINT.P

\*\*\*\*\*  
 Peak Number 14 Benzene, 1,2,4,5-tetramethyl- Concentration Rank 15

R.T.	EstConc	Area	Relative to ISTD	R.T.
9.77	36.87 ng/ul	817784	Naphthalene-d8	10.95

Hit#	of	Tentative ID	MW	MolForm	CAS#	Qual
1	5	Benzene, 1,2,4,5-tetramethyl-	134	C10H14	000095-93-2	95
2		Benzene, 1,2,3,4-tetramethyl-	134	C10H14	000488-23-3	94
3		Benzene, 1,2,3,4-tetramethyl-	134	C10H14	000488-23-3	94
4		Benzene, 1,2,4,5-tetramethyl-	134	C10H14	000095-93-2	94
5		Benzene, 1,2,3,4-tetramethyl-	134	C10H14	000488-23-3	91



Data Path : Z:\HPCHEM1\BNA G\DATA\BG060216\  
 Data File : BG022150.D  
 Acq On : 2 Jun 2016 12:48  
 Operator : UM/SJ  
 Sample : H3302-07  
 Misc :  
 ALS Vial : 5 Sample Multiplier: 1

Instrument :  
 BNA\_G  
 ClientSampled :  
 CB203

Quant Method : Z:\HPCHEM1\BNA G\METHODS\SOM02.2-EPA-BG052116.M  
 Quant Title : SVOA CALIBRATION

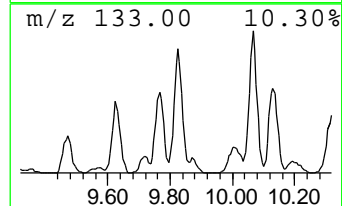
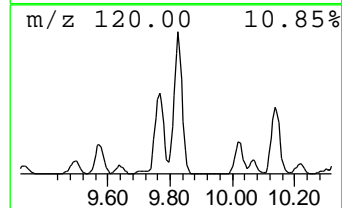
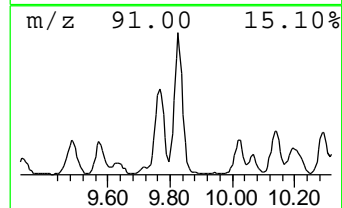
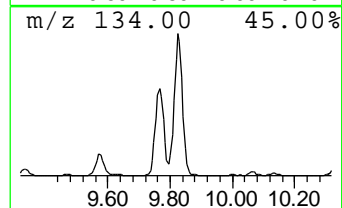
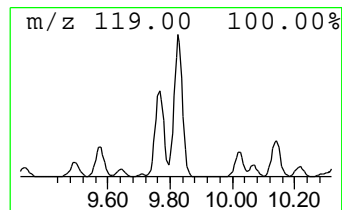
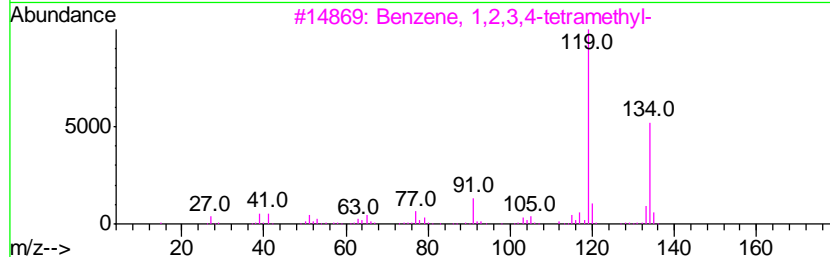
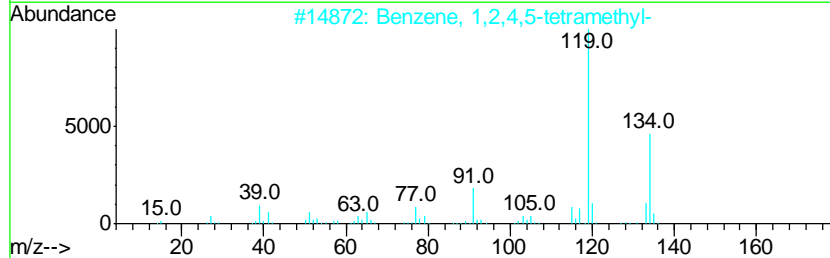
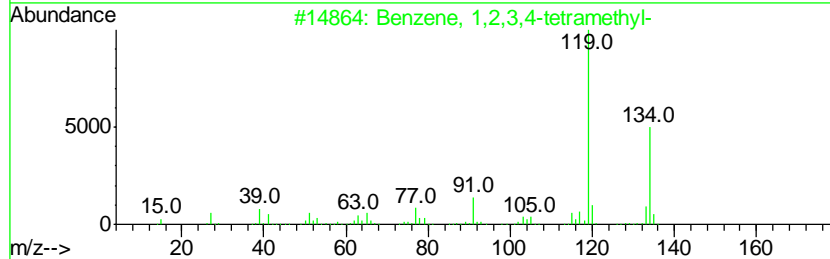
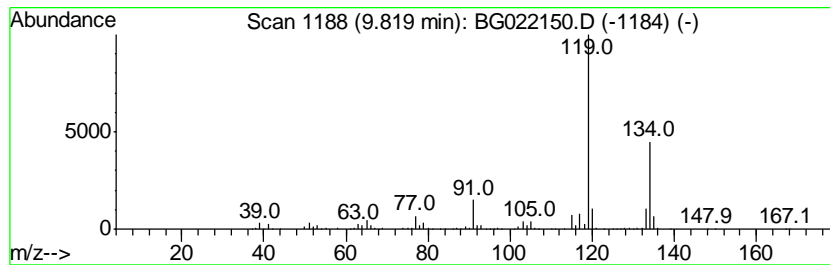
TIC Library : C:\Database\NIST11.L  
 TIC Integration Parameters: LSCINT.P

\*\*\*\*\*  
 Peak Number 15 Benzene, 1,2,3,4-tetramethyl- Concentration Rank 8

R.T.	EstConc	Area	Relative to ISTD	R.T.
9.82	57.78 ng/ul	1281670	Napthalene-d8	10.95

Hit#	of	Tentative ID	MW	MolForm	CAS#	Qual
1	5	Benzene, 1,2,3,4-tetramethyl-	134	C10H14	000488-23-3	97
2		Benzene, 1,2,4,5-tetramethyl-	134	C10H14	000095-93-2	97
3		Benzene, 1,2,3,4-tetramethyl-	134	C10H14	000488-23-3	97
4		Benzene, 1,2,3,5-tetramethyl-	134	C10H14	000527-53-7	95
5		Benzene, 1,2,3,4-tetramethyl-	134	C10H14	000488-23-3	95





Data Path : Z:\HPCHEM1\BNA G\DATA\BG060216\  
 Data File : BG022150.D  
 Acq On : 2 Jun 2016 12:48  
 Operator : UM/SJ  
 Sample : H3302-07  
 Misc :  
 ALS Vial : 5 Sample Multiplier: 1

Instrument :  
 BNA\_G  
 ClientSampled :  
 CB203

Quant Method : Z:\HPCHEM1\BNA G\METHODS\SOM02.2-EPA-BG052116.M  
 Quant Title : SVOA CALIBRATION

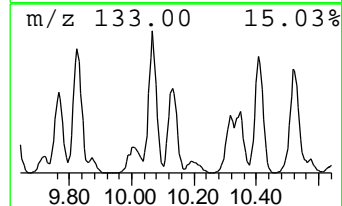
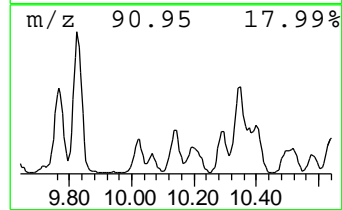
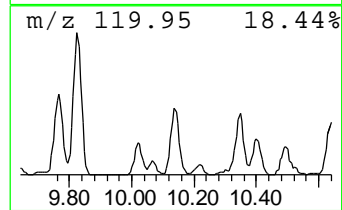
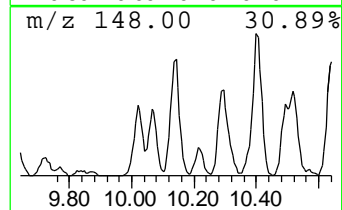
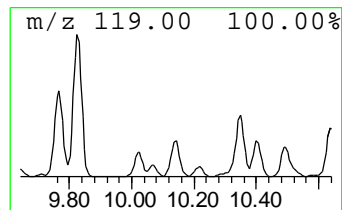
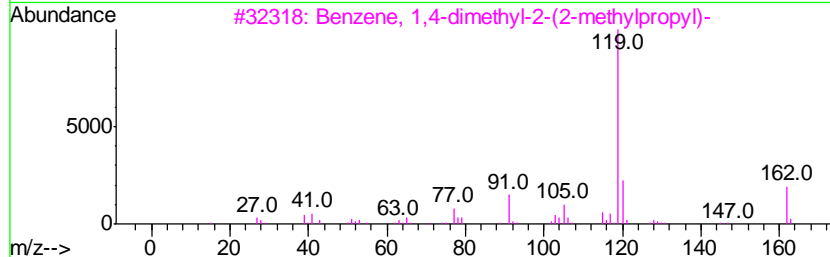
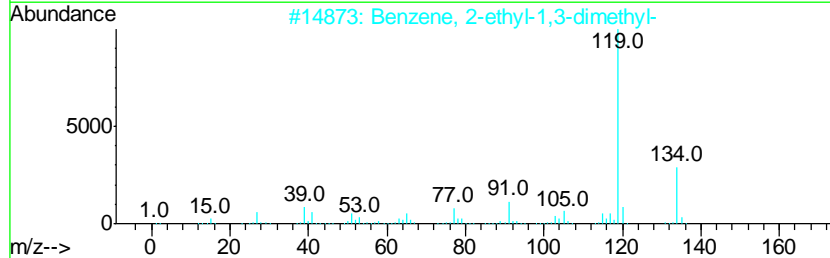
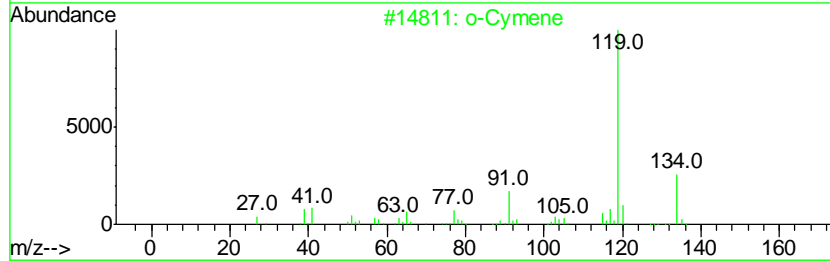
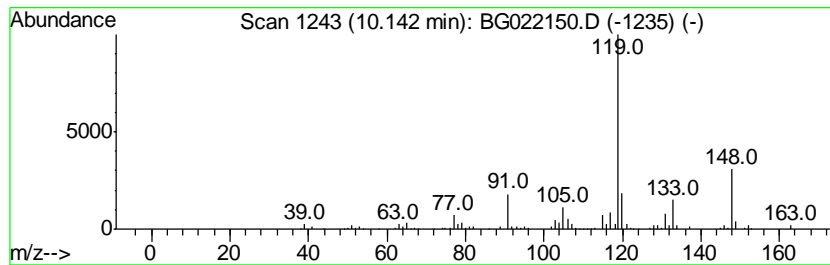
TIC Library : C:\Database\NIST11.L  
 TIC Integration Parameters: LSCINT.P

\*\*\*\*\*  
 Peak Number 16 o-Cymene Concentration Rank 39

R.T.	EstConc	Area	Relative to ISTD	R.T.
10.14	19.92 ng/ul	441942	Napthalene-d8	10.95

Hit#	of	Tentative ID	MW	MolForm	CAS#	Qual
1	5	o-Cymene	134	C10H14	000527-84-4	60
2		Benzene, 2-ethyl-1,3-dimethyl-	134	C10H14	002870-04-4	60
3		Benzene, 1,4-dimethyl-2-(2-methy...	162	C12H18	055669-88-0	53
4		Benzene, 1,2,3,4-tetramethyl-	134	C10H14	000488-23-3	52
5		Benzene, 1-ethyl-3,5-dimethyl-	134	C10H14	000934-74-7	50



Data Path : Z:\HPCHEM1\BNA G\DATA\BG060216\  
 Data File : BG022150.D  
 Acq On : 2 Jun 2016 12:48  
 Operator : UM/SJ  
 Sample : H3302-07  
 Misc :  
 ALS Vial : 5 Sample Multiplier: 1

Instrument :  
 BNA\_G  
 ClientSampled :  
 CB203

Quant Method : Z:\HPCHEM1\BNA G\METHODS\SOM02.2-EPA-BG052116.M  
 Quant Title : SVOA CALIBRATION

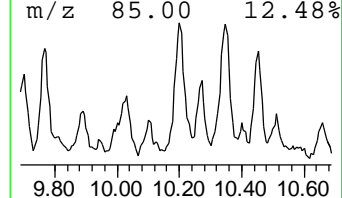
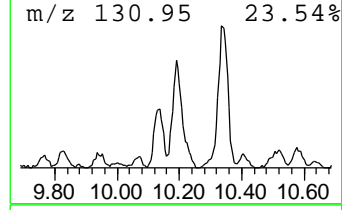
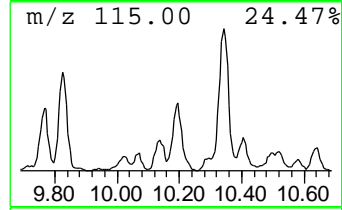
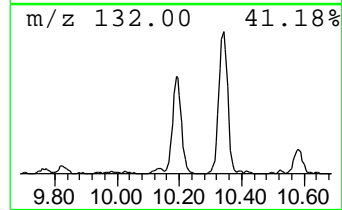
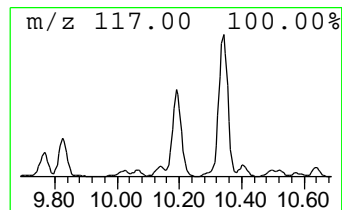
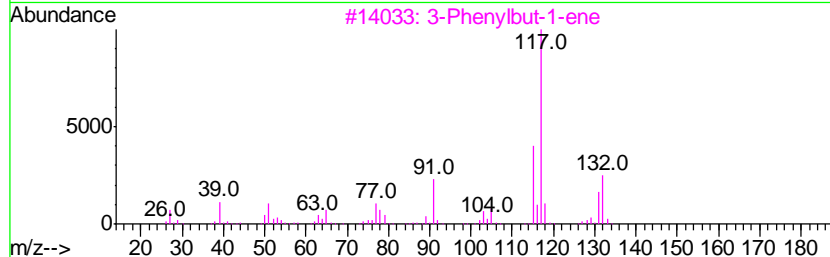
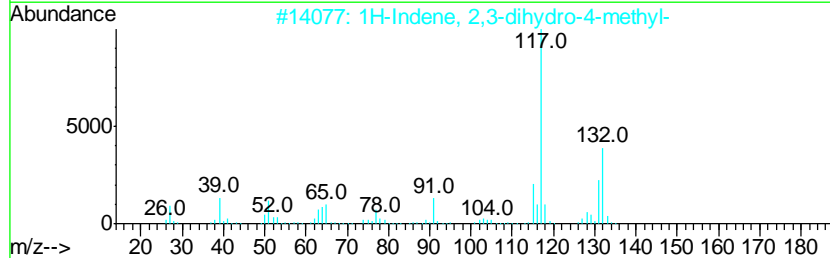
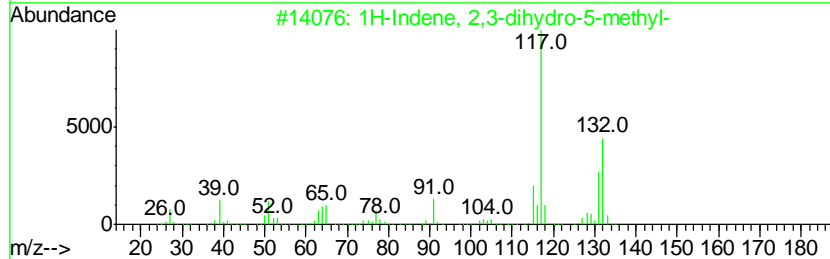
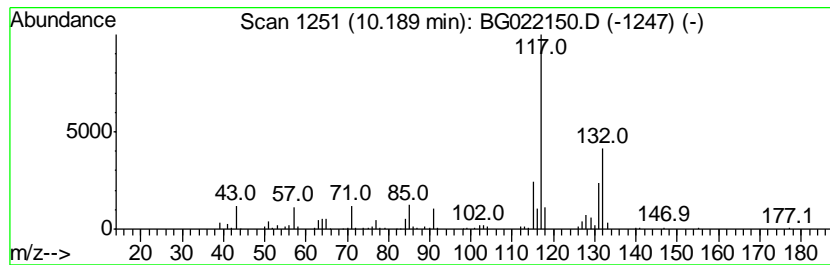
TIC Library : C:\Database\NIST11.L  
 TIC Integration Parameters: LSCINT.P

\*\*\*\*\*  
 Peak Number 17 1H-Indene, 2,3-dihydro-5-me... Concentration Rank 37

R.T.	EstConc	Area	Relative to ISTD	R.T.
10.19	20.51 ng/ul	454995	Napthalene-d8	10.95

Hit#	of	Tentative ID	MW	MolForm	CAS#	Qual
1	5	1H-Indene, 2,3-dihydro-5-methyl-	132	C10H12	000874-35-1	87
2		1H-Indene, 2,3-dihydro-4-methyl-	132	C10H12	000824-22-6	87
3		3-Phenylbut-1-ene	132	C10H12	000934-10-1	87
4		Benzene, (1-methyl-1-propenyl)-,...	132	C10H12	000768-00-3	86
5		Indan, 1-methyl-	132	C10H12	000767-58-8	83



Data Path : Z:\HPCHEM1\BNA G\DATA\BG060216\  
 Data File : BG022150.D  
 Acq On : 2 Jun 2016 12:48  
 Operator : UM/SJ  
 Sample : H3302-07  
 Misc :  
 ALS Vial : 5 Sample Multiplier: 1

Instrument :  
 BNA\_G  
 ClientSampleId :  
 CB203

Quant Method : Z:\HPCHEM1\BNA G\METHODS\SOM02.2-EPA-BG052116.M  
 Quant Title : SVOA CALIBRATION

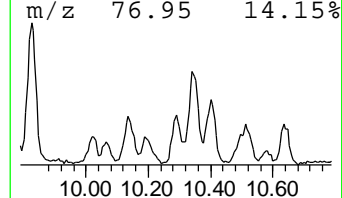
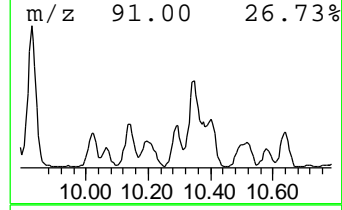
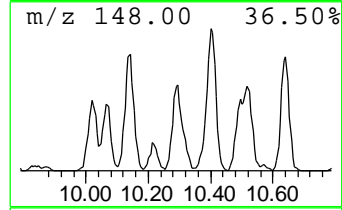
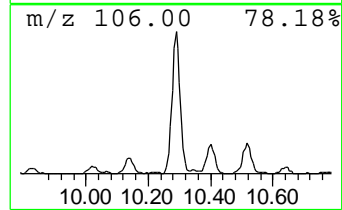
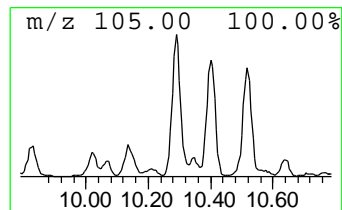
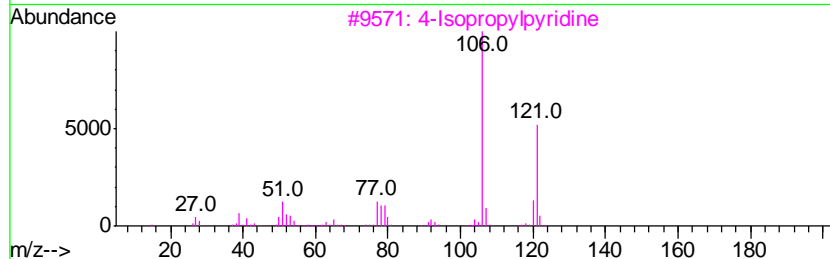
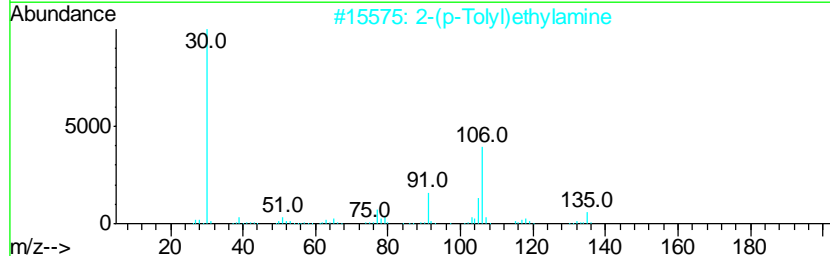
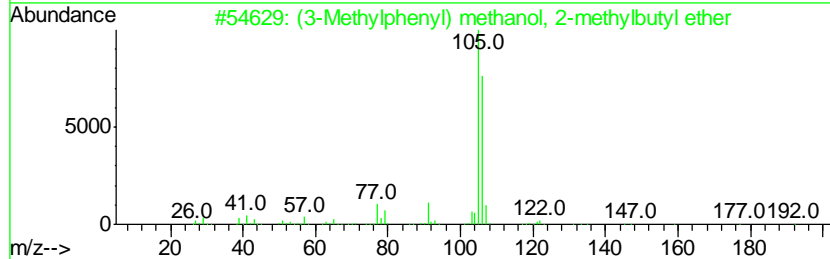
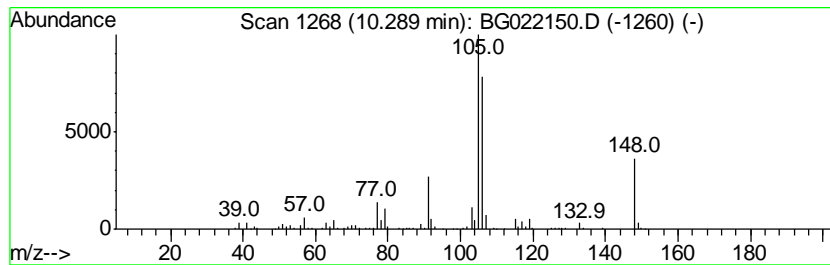
TIC Library : C:\Database\NIST11.L  
 TIC Integration Parameters: LSCINT.P

\*\*\*\*\*  
 Peak Number 18 (3-Methylphenyl) methanol, ... Concentration Rank 52

R.T.	EstConc	Area	Relative to ISTD	R.T.
10.29	14.33 ng/ul	317933	Napthalene-d8	10.95

Hit#	of	Tentative ID	MW	MolForm	CAS#	Qual
1	5	(3-Methylphenyl) methanol, 2-met...	192	C13H20O	1000374-43-9	64
2		2-(p-Tolyl)ethylamine	135	C9H13N	003261-62-9	64
3		4-Isopropylpyridine	121	C8H11N	000696-30-0	47
4		Benzeneacetamide, .alpha.-amino-	150	C8H10N2O	000700-63-0	47
5		Benzenamine, 4-butyl-	149	C10H15N	000104-13-2	47



Data Path : Z:\HPCHEM1\BNA G\DATA\BG060216\  
 Data File : BG022150.D  
 Acq On : 2 Jun 2016 12:48  
 Operator : UM/SJ  
 Sample : H3302-07  
 Misc :  
 ALS Vial : 5 Sample Multiplier: 1

Instrument :  
 BNA\_G  
 ClientSampleId :  
 CB203

Quant Method : Z:\HPCHEM1\BNA G\METHODS\SOM02.2-EPA-BG052116.M  
 Quant Title : SVOA CALIBRATION

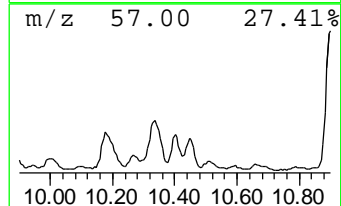
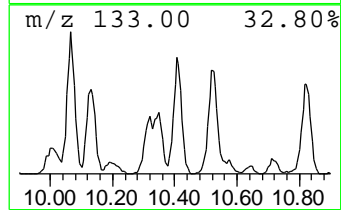
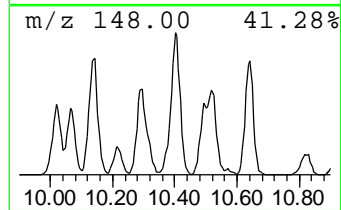
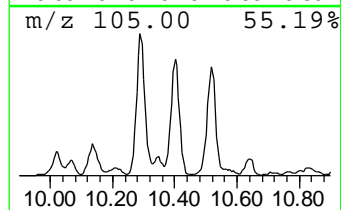
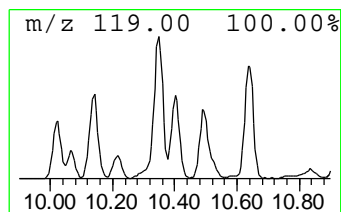
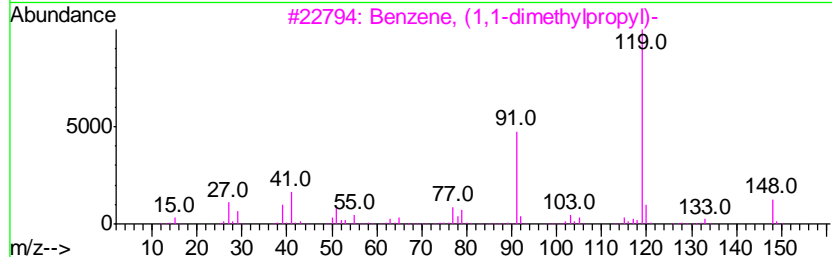
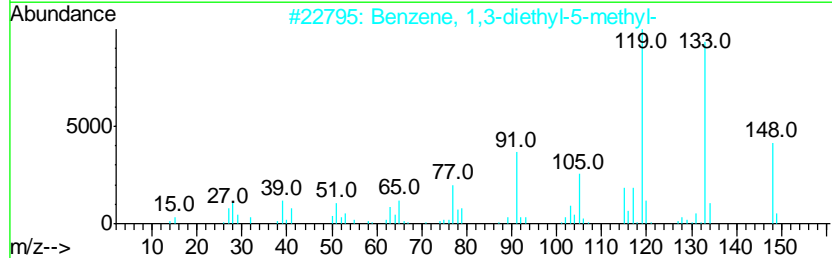
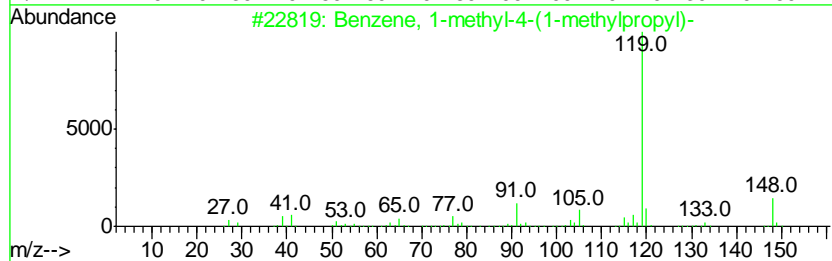
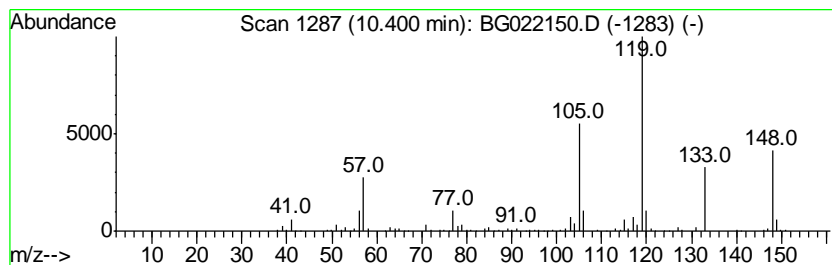
TIC Library : C:\Database\NIST11.L  
 TIC Integration Parameters: LSCINT.P

\*\*\*\*\*  
 Peak Number 20 Benzene, 1-methyl-4-(1-meth... Concentration Rank 34

R.T.	EstConc	Area	Relative to ISTD	R.T.
10.40	21.80 ng/ul	483644	Napthalene-d8	10.95

Hit#	of	Tentative ID	MW	MolForm	CAS#	Qual
1	5	Benzene, 1-methyl-4-(1-methylpro...	148	C11H16	001595-16-0	87
2		Benzene, 1,3-diethyl-5-methyl-	148	C11H16	002050-24-0	72
3		Benzene, (1,1-dimethylpropyl)-	148	C11H16	002049-95-8	59
4		Benzene, (1,1-dimethylpropyl)-	148	C11H16	002049-95-8	59
5		Benzene, (1,1-dimethylpropyl)-	148	C11H16	002049-95-8	59



Data Path : Z:\HPCHEM1\BNA G\DATA\BG060216\  
 Data File : BG022150.D  
 Acq On : 2 Jun 2016 12:48  
 Operator : UM/SJ  
 Sample : H3302-07  
 Misc :  
 ALS Vial : 5 Sample Multiplier: 1

Instrument :  
 BNA\_G  
 ClientSampled :  
 CB203

Quant Method : Z:\HPCHEM1\BNA G\METHODS\SOM02.2-EPA-BG052116.M  
 Quant Title : SVOA CALIBRATION

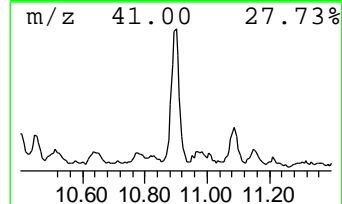
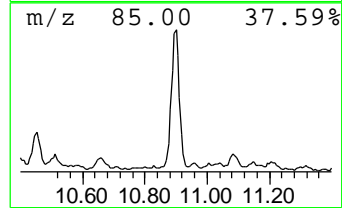
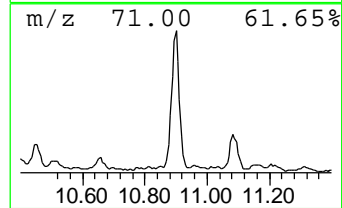
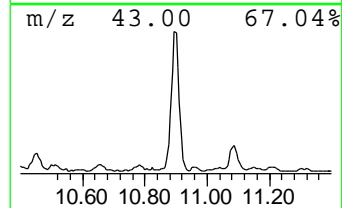
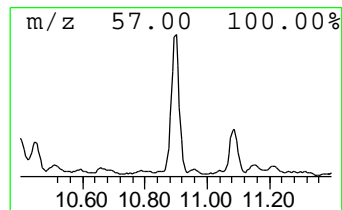
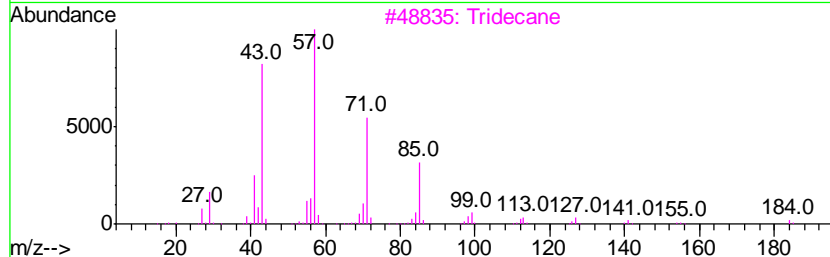
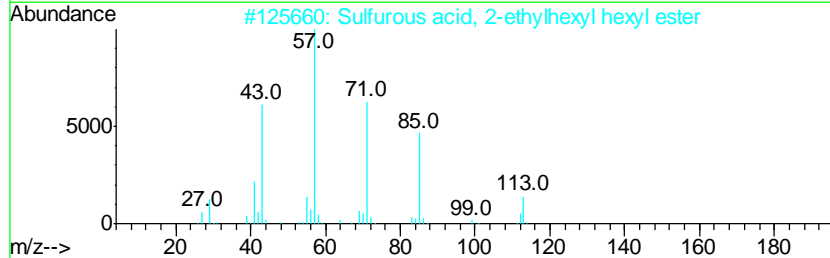
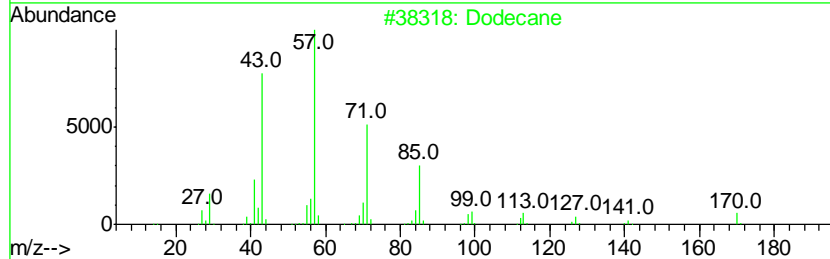
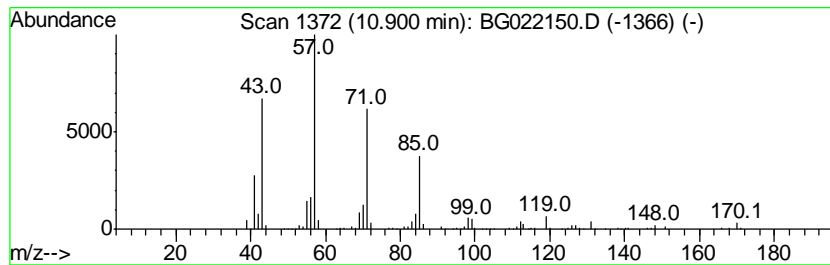
TIC Library : C:\Database\NIST11.L  
 TIC Integration Parameters: LSCINT.P

\*\*\*\*\*  
 Peak Number 22 (DEL) Alkane: Straight-Chai... Concentration Rank 30

R.T.	EstConc	Area	Relative to ISTD	R.T.
10.90	23.71 ng/ul	525858	Naphthalene-d8	10.95

Hit#	of	Tentative ID	MW	MolForm	CAS#	Qual
1	5	Dodecane	170	C12H26	000112-40-3	83
2		Sulfurous acid, 2-ethylhexyl hex...	278	C14H30O3S	1000309-20-2	64
3		Tridecane	184	C13H28	000629-50-5	59
4		Eicosane	282	C20H42	000112-95-8	59
5		Dodecane, 1-iodo-	296	C12H25I	004292-19-7	50



Data Path : Z:\HPCHEM1\BNA G\DATA\BG060216\  
 Data File : BG022150.D  
 Acq On : 2 Jun 2016 12:48  
 Operator : UM/SJ  
 Sample : H3302-07  
 Misc :  
 ALS Vial : 5 Sample Multiplier: 1

Instrument :  
 BNA\_G  
 ClientSampled :  
 CB203

Quant Method : Z:\HPCHEM1\BNA G\METHODS\SOM02.2-EPA-BG052116.M  
 Quant Title : SVOA CALIBRATION

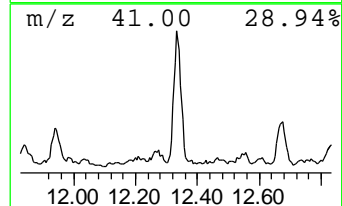
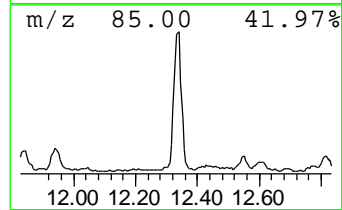
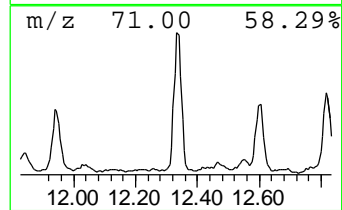
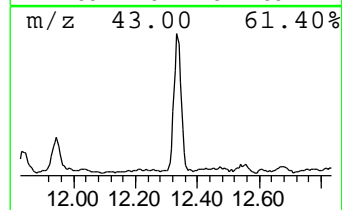
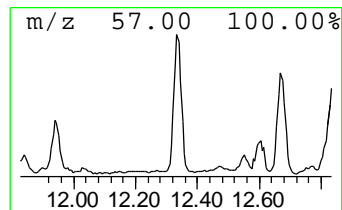
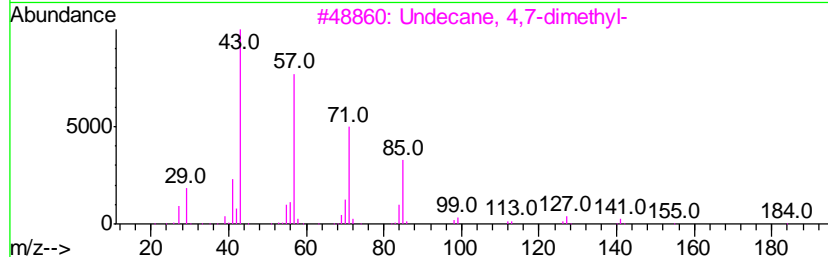
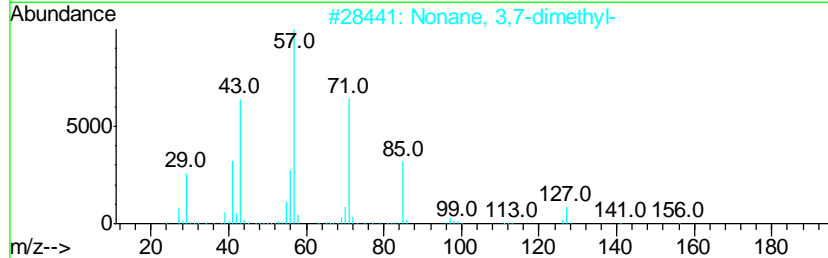
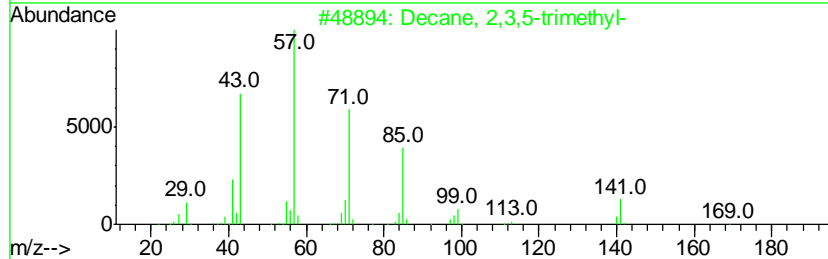
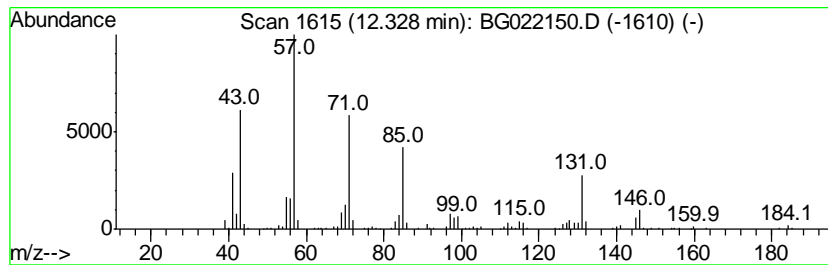
TIC Library : C:\Database\NIST11.L  
 TIC Integration Parameters: LSCINT.P

\*\*\*\*\*  
 Peak Number 23 (DEL) Alkane: Straight-Chai... Concentration Rank 50

R.T.	EstConc	Area	Relative to ISTD	R.T.
12.33	14.59 ng/ul	323594	Naphthalene-d8	10.95

Hit#	of	Tentative ID	MW	MolForm	CAS#	Qual
1	5	Decane, 2,3,5-trimethyl-	184	C13H28	062238-11-3	64
2		Nonane, 3,7-dimethyl-	156	C11H24	017302-32-8	64
3		Undecane, 4,7-dimethyl-	184	C13H28	017301-32-5	64
4		Tridecane	184	C13H28	000629-50-5	62
5		1,3-Dimethylcyclopentanol	114	C7H14O	019550-46-0	58



Data Path : Z:\HPCHEM1\BNA G\DATA\BG060216\  
 Data File : BG022150.D  
 Acq On : 2 Jun 2016 12:48  
 Operator : UM/SJ  
 Sample : H3302-07  
 Misc :  
 ALS Vial : 5 Sample Multiplier: 1

Instrument :  
 BNA\_G  
 ClientSampleID :  
 CB203

Quant Method : Z:\HPCHEM1\BNA G\METHODS\SOM02.2-EPA-BG052116.M  
 Quant Title : SVOA CALIBRATION

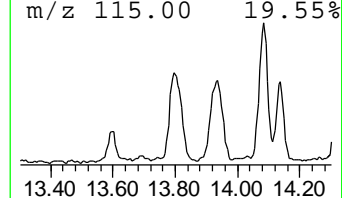
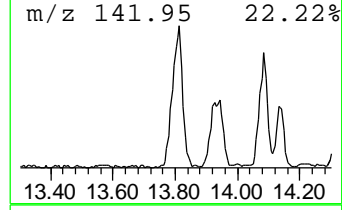
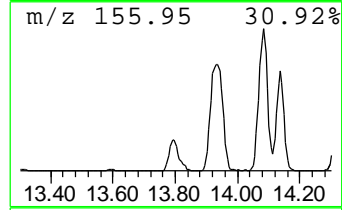
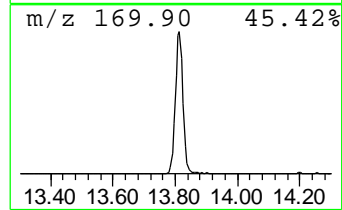
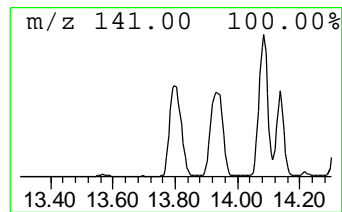
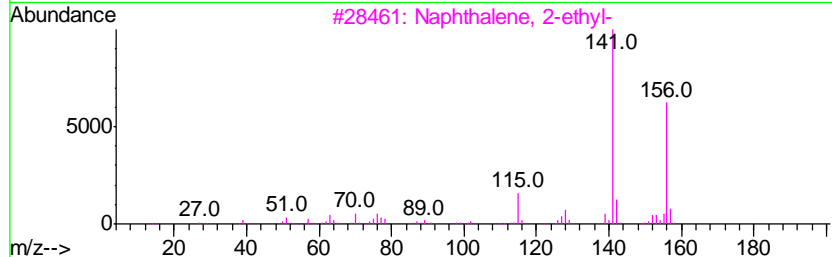
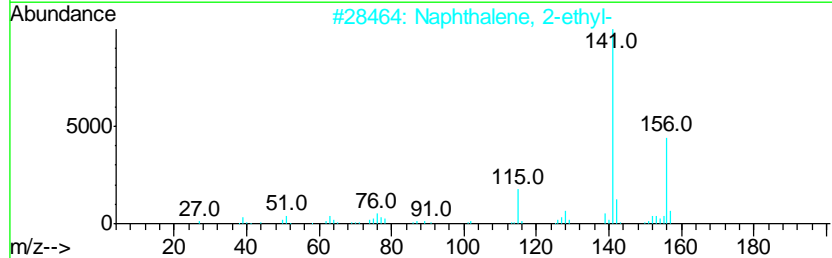
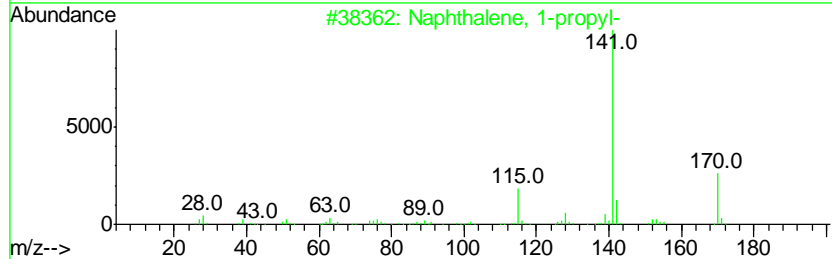
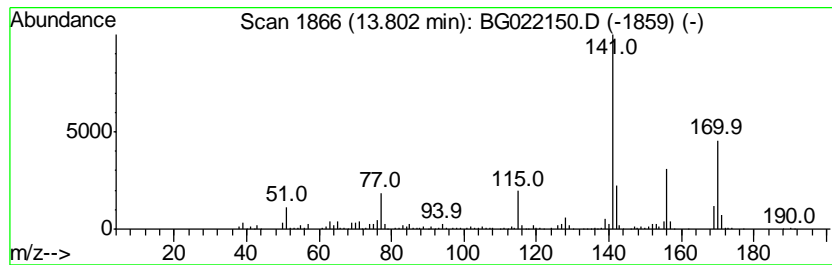
TIC Library : C:\Database\NIST11.L  
 TIC Integration Parameters: LSCINT.P

\*\*\*\*\*  
 Peak Number 25 Naphthalene, 1-propyl- Concentration Rank 38

R.T.	EstConc	Area	Relative to ISTD	R.T.
13.80	20.34 ng/ul	619102	Acenaphthene-d10	14.77

Hit#	of	Tentative ID	MW	MolForm	CAS#	Qual
1	5	Naphthalene, 1-propyl-	170	C13H14	002765-18-6	70
2		Naphthalene, 2-ethyl-	156	C12H12	000939-27-5	64
3		Naphthalene, 2-ethyl-	156	C12H12	000939-27-5	58
4		Benzenemethanol, 4-chloro-.alpha...	156	C8H9ClO	003391-10-4	43
5		1-Ethanone, 1-[4-(1-naphthalenyl)...	276	C19H16O2	1000338-30-5	43



Data Path : Z:\HPCHEM1\BNA G\DATA\BG060216\  
 Data File : BG022150.D  
 Acq On : 2 Jun 2016 12:48  
 Operator : UM/SJ  
 Sample : H3302-07  
 Misc :  
 ALS Vial : 5 Sample Multiplier: 1

Instrument :  
 BNA\_G  
 ClientSampled :  
 CB203

Quant Method : Z:\HPCHEM1\BNA G\METHODS\SOM02.2-EPA-BG052116.M  
 Quant Title : SVOA CALIBRATION

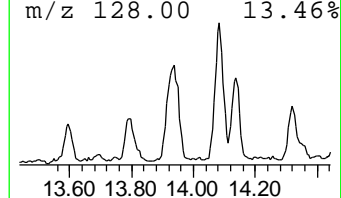
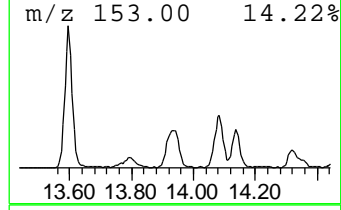
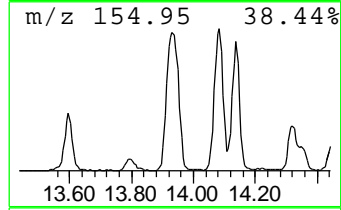
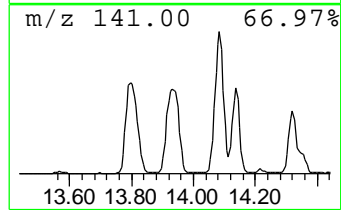
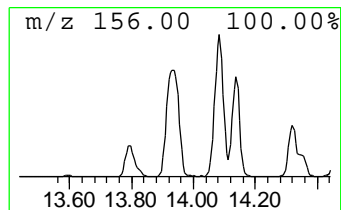
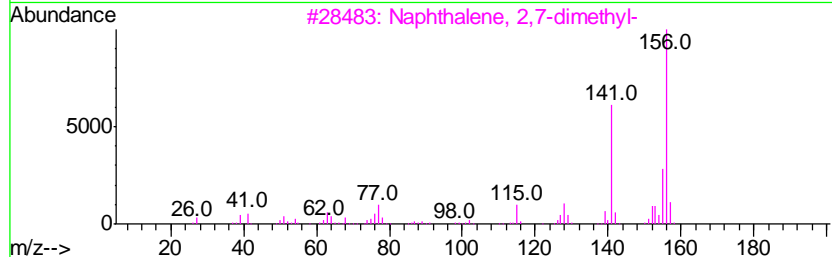
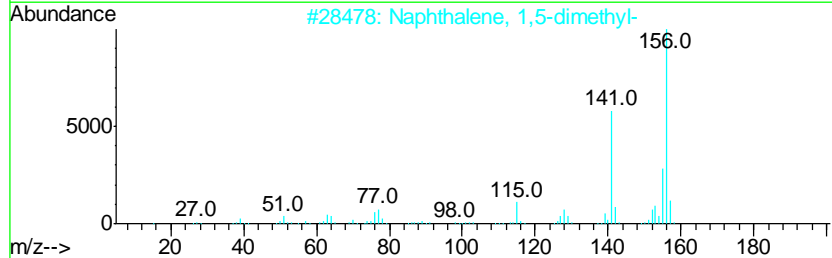
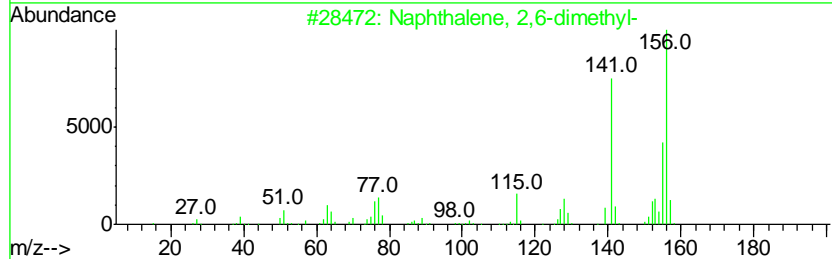
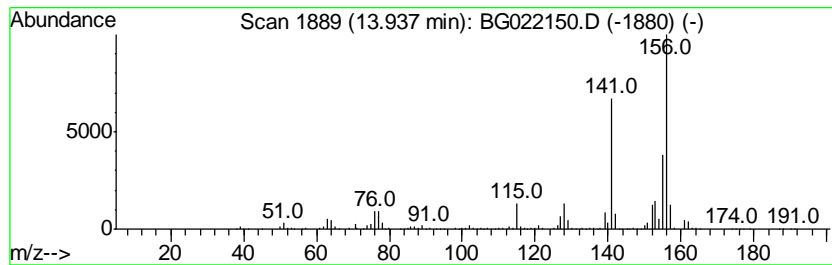
TIC Library : C:\Database\NIST11.L  
 TIC Integration Parameters: LSCINT.P

\*\*\*\*\*  
 Peak Number 26 Naphthalene, 2,6-dimethyl- Concentration Rank 23

R.T.	EstConc	Area	Relative to ISTD	R.T.
13.94	30.98 ng/ul	943153	Acenaphthene-d10	14.77

Hit#	of	Tentative ID	MW	MolForm	CAS#	Qual
1	5	Naphthalene, 2,6-dimethyl-	156	C12H12	000581-42-0	98
2		Naphthalene, 1,5-dimethyl-	156	C12H12	000571-61-9	97
3		Naphthalene, 2,7-dimethyl-	156	C12H12	000582-16-1	97
4		Naphthalene, 1,2-dimethyl-	156	C12H12	000573-98-8	96
5		Naphthalene, 1,6-dimethyl-	156	C12H12	000575-43-9	96





Data Path : Z:\HPCHEM1\BNA G\DATA\BG060216\  
 Data File : BG022150.D  
 Acq On : 2 Jun 2016 12:48  
 Operator : UM/SJ  
 Sample : H3302-07  
 Misc :  
 ALS Vial : 5 Sample Multiplier: 1

Instrument :  
 BNA\_G  
 ClientSampleId :  
 CB203

Quant Method : Z:\HPCHEM1\BNA G\METHODS\SOM02.2-EPA-BG052116.M  
 Quant Title : SVOA CALIBRATION

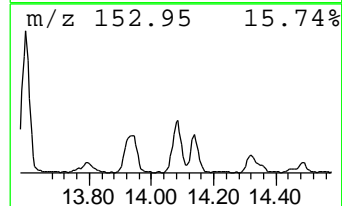
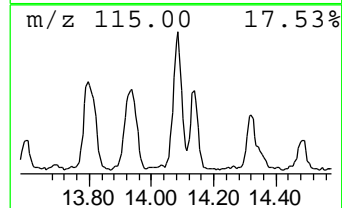
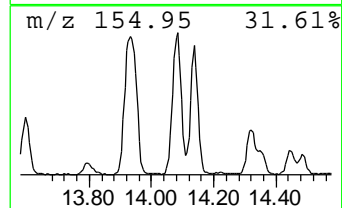
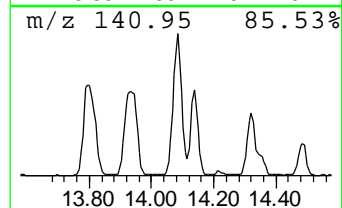
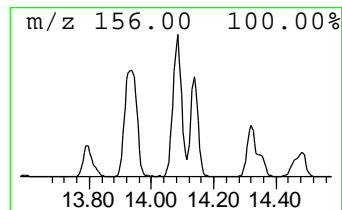
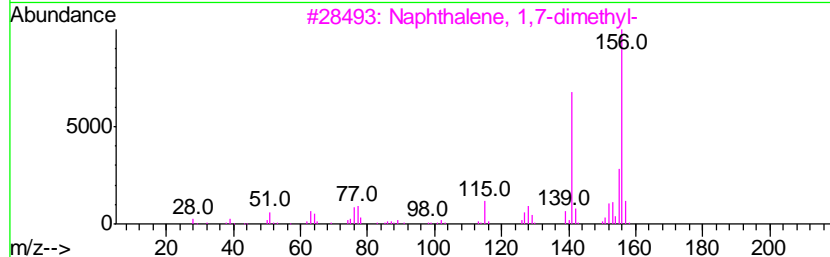
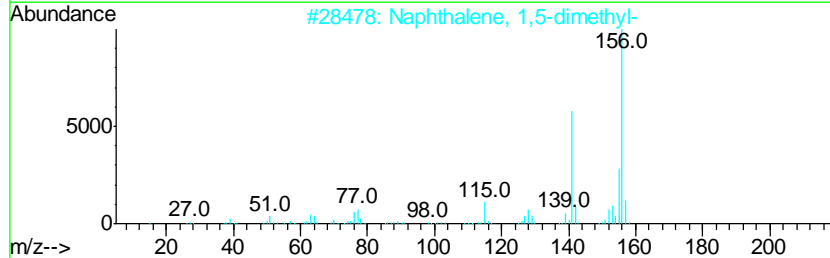
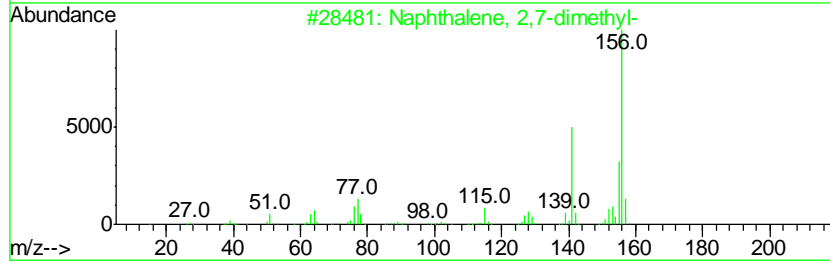
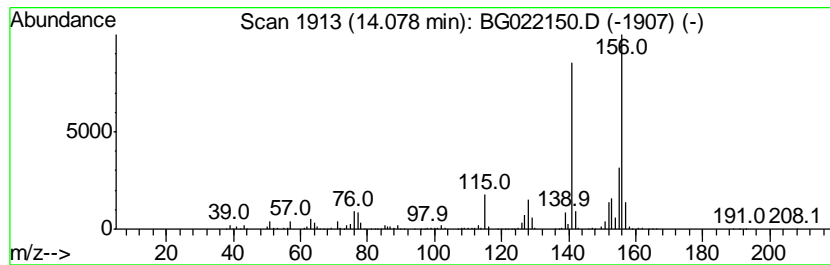
TIC Library : C:\Database\NIST11.L  
 TIC Integration Parameters: LSCINT.P

\*\*\*\*\*  
 Peak Number 27 Naphthalene, 2,7-dimethyl- Concentration Rank 26

R.T.	EstConc	Area	Relative to ISTD	R.T.
14.08	29.55 ng/ul	899468	Acenaphthene-d10	14.77

Hit#	of	Tentative ID	MW	MolForm	CAS#	Qual
1	5	Naphthalene, 2,7-dimethyl-	156	C12H12	000582-16-1	97
2		Naphthalene, 1,5-dimethyl-	156	C12H12	000571-61-9	97
3		Naphthalene, 1,7-dimethyl-	156	C12H12	000575-37-1	97
4		Naphthalene, 1,3-dimethyl-	156	C12H12	000575-41-7	97
5		Naphthalene, 1,7-dimethyl-	156	C12H12	000575-37-1	97



Data Path : Z:\HPCHEM1\BNA G\DATA\BG060216\  
 Data File : BG022150.D  
 Acq On : 2 Jun 2016 12:48  
 Operator : UM/SJ  
 Sample : H3302-07  
 Misc :  
 ALS Vial : 5 Sample Multiplier: 1

Instrument :  
 BNA\_G  
 ClientSampled :  
 CB203

Quant Method : Z:\HPCHEM1\BNA G\METHODS\SOM02.2-EPA-BG052116.M  
 Quant Title : SVOA CALIBRATION

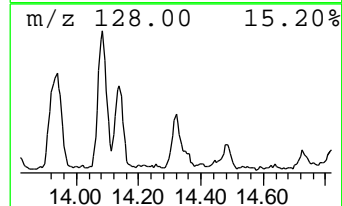
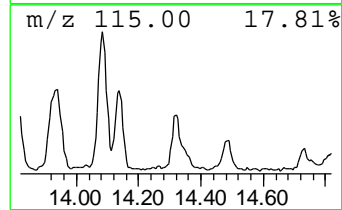
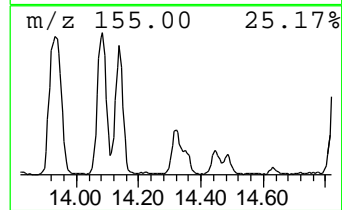
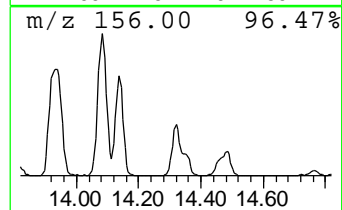
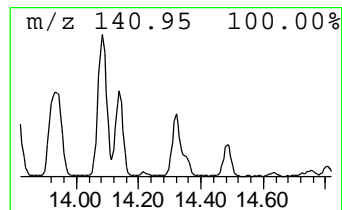
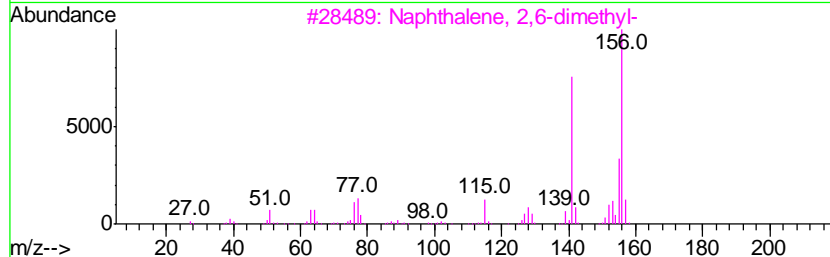
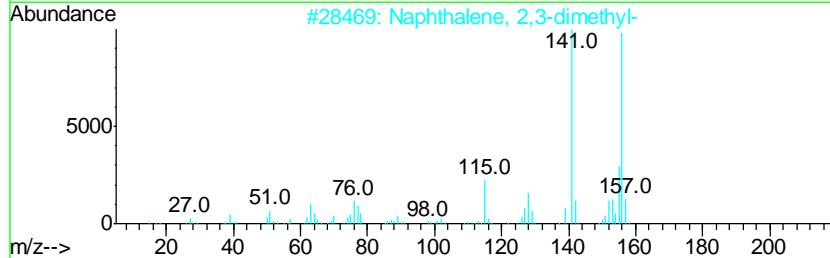
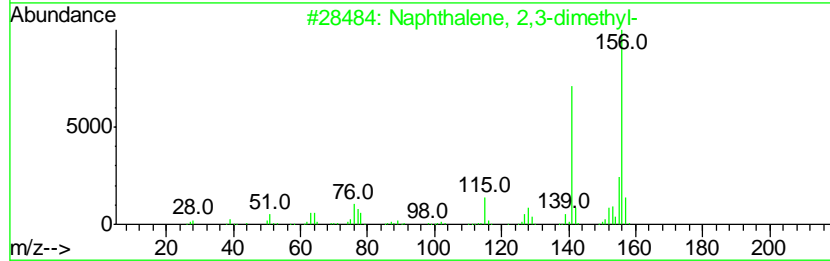
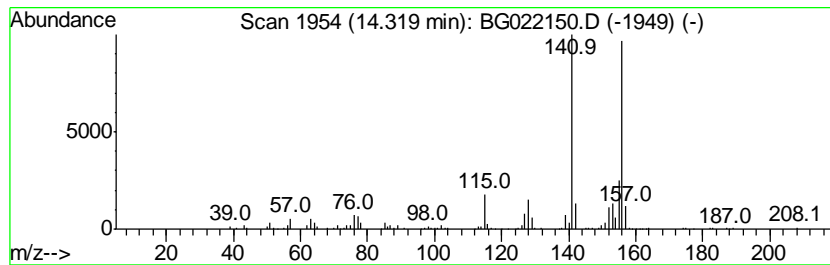
TIC Library : C:\Database\NIST11.L  
 TIC Integration Parameters: LSCINT.P

\*\*\*\*\*  
 Peak Number 28 Naphthalene, 2,3-dimethyl- Concentration Rank 53

R.T.	EstConc	Area	Relative to ISTD	R.T.
14.32	13.14 ng/ul	399851	Acenaphthene-d10	14.77

Hit#	of	Tentative ID	MW	MolForm	CAS#	Qual
1	5	Naphthalene, 2,3-dimethyl-	156	C12H12	000581-40-8	97
2		Naphthalene, 2,3-dimethyl-	156	C12H12	000581-40-8	97
3		Naphthalene, 2,6-dimethyl-	156	C12H12	000581-42-0	97
4		Naphthalene, 2,3-dimethyl-	156	C12H12	000581-40-8	97
5		Naphthalene, 1,7-dimethyl-	156	C12H12	000575-37-1	97



Data Path : Z:\HPCHEM1\BNA G\DATA\BG060216\  
 Data File : BG022150.D  
 Acq On : 2 Jun 2016 12:48  
 Operator : UM/SJ  
 Sample : H3302-07  
 Misc :  
 ALS Vial : 5 Sample Multiplier: 1

Instrument :  
 BNA\_G  
 ClientSampleID :  
 CB203

Quant Method : Z:\HPCHEM1\BNA G\METHODS\SOM02.2-EPA-BG052116.M  
 Quant Title : SVOA CALIBRATION

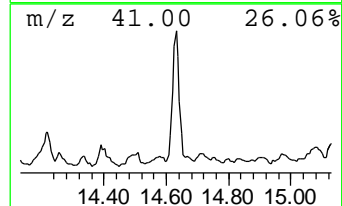
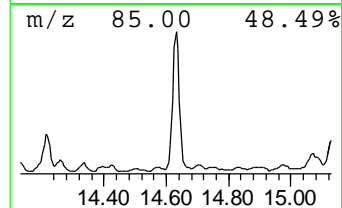
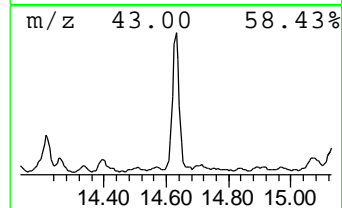
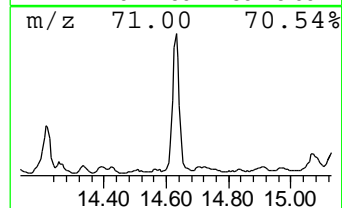
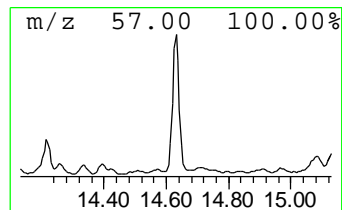
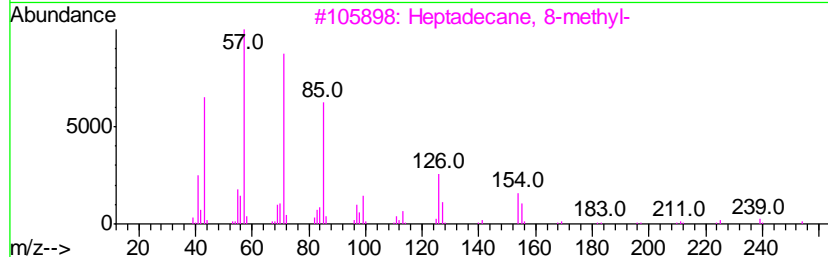
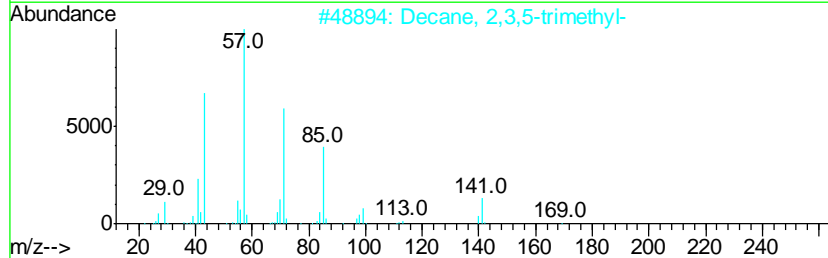
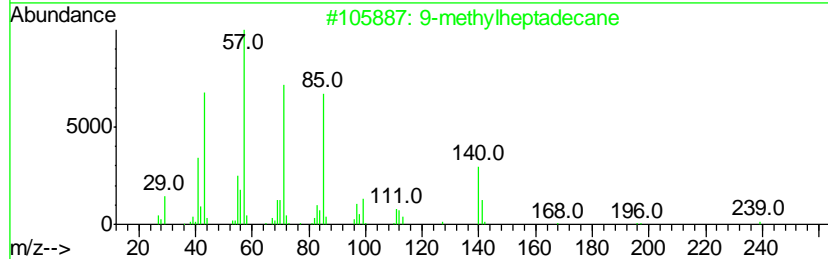
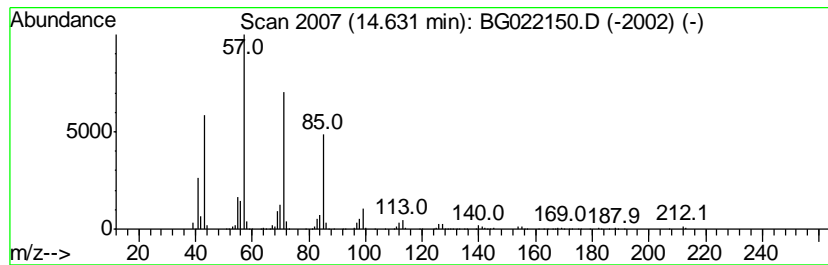
TIC Library : C:\Database\NIST11.L  
 TIC Integration Parameters: LSCINT.P

\*\*\*\*\*  
 Peak Number 29 (DEL) Alkane: Straight-Chai... Concentration Rank 29

R.T.	EstConc	Area	Relative to ISTD	R.T.
14.63	25.77 ng/ul	784344	Acenaphthene-d10	14.77

Hit#	of	Tentative ID	MW	MolForm	CAS#	Qual
1	5	9-methylheptadecane	254	C18H38	026741-18-4	90
2		Decane, 2,3,5-trimethyl-	184	C13H28	062238-11-3	83
3		Heptadecane, 8-methyl-	254	C18H38	013287-23-5	83
4		Tetradecane	198	C14H30	000629-59-4	80
5		Undecane, 5,7-dimethyl-	184	C13H28	017312-83-3	80



Data Path : Z:\HPCHEM1\BNA G\DATA\BG060216\  
 Data File : BG022150.D  
 Acq On : 2 Jun 2016 12:48  
 Operator : UM/SJ  
 Sample : H3302-07  
 Misc :  
 ALS Vial : 5 Sample Multiplier: 1

Instrument :  
 BNA\_G  
 ClientSampled :  
 CB203

Quant Method : Z:\HPCHEM1\BNA G\METHODS\SOM02.2-EPA-BG052116.M  
 Quant Title : SVOA CALIBRATION

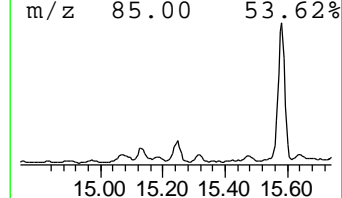
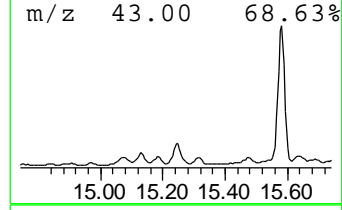
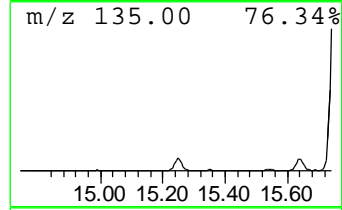
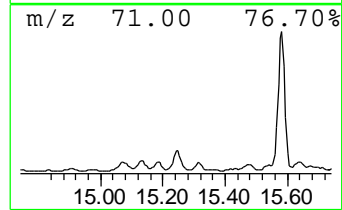
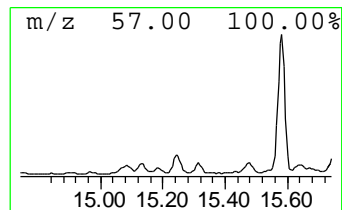
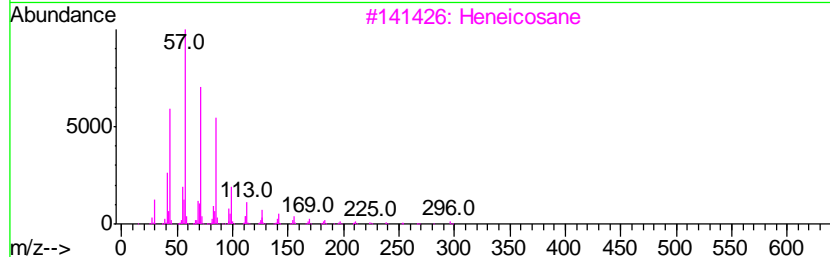
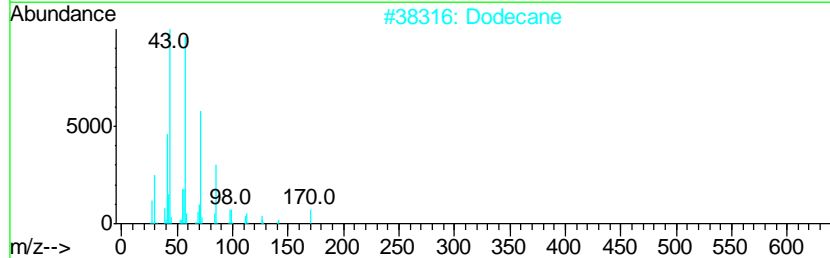
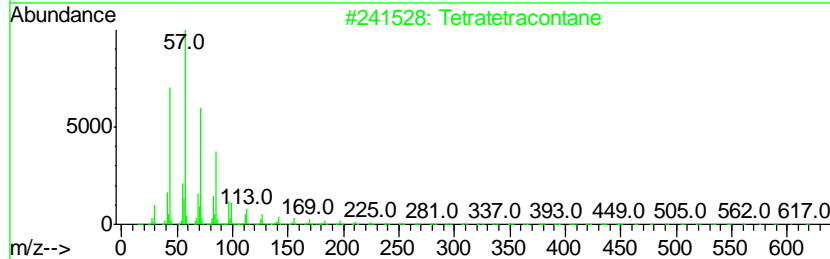
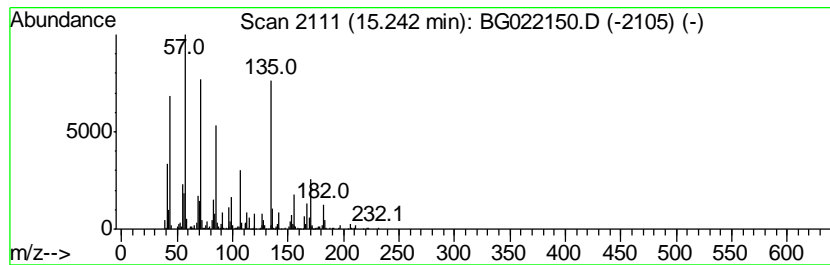
TIC Library : C:\Database\NIST11.L  
 TIC Integration Parameters: LSCINT.P

\*\*\*\*\*  
 Peak Number 30 (DEL) Alkane: Straight-Chai... Concentration Rank 43

R.T.	EstConc	Area	Relative to ISTD	R.T.
15.24	18.33 ng/ul	558065	Acenaphthene-d10	14.77

Hit#	of	Tentative ID	MW	MolForm	CAS#	Qual
1	5	Tetratetracontane	619	C44H90	007098-22-8	46
2		Dodecane	170	C12H26	000112-40-3	45
3		Heneicosane	296	C21H44	000629-94-7	41
4		10-Methylnonadecane	282	C20H42	056862-62-5	41
5		Hexacosane	366	C26H54	000630-01-3	41



Data Path : Z:\HPCHEM1\BNA G\DATA\BG060216\  
 Data File : BG022150.D  
 Acq On : 2 Jun 2016 12:48  
 Operator : UM/SJ  
 Sample : H3302-07  
 Misc :  
 ALS Vial : 5 Sample Multiplier: 1

Instrument :  
 BNA\_G  
 ClientSampleID :  
 CB203

Quant Method : Z:\HPCHEM1\BNA G\METHODS\SOM02.2-EPA-BG052116.M  
 Quant Title : SVOA CALIBRATION

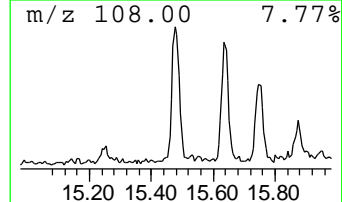
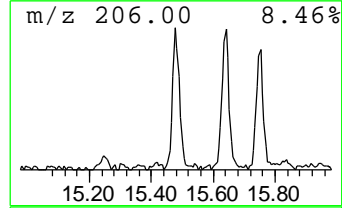
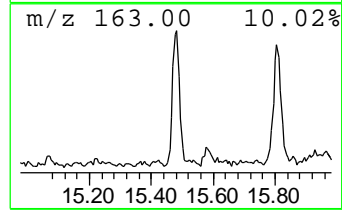
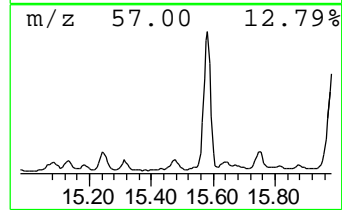
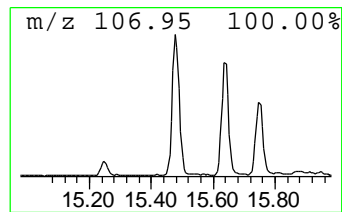
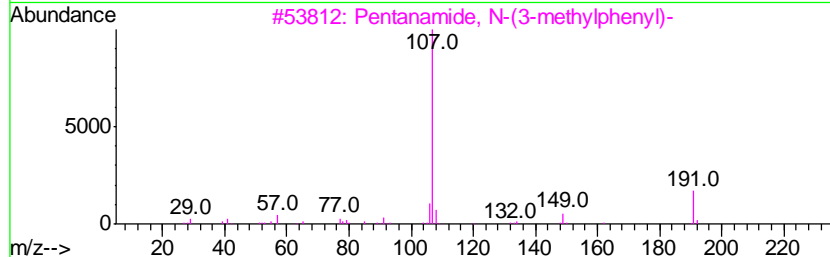
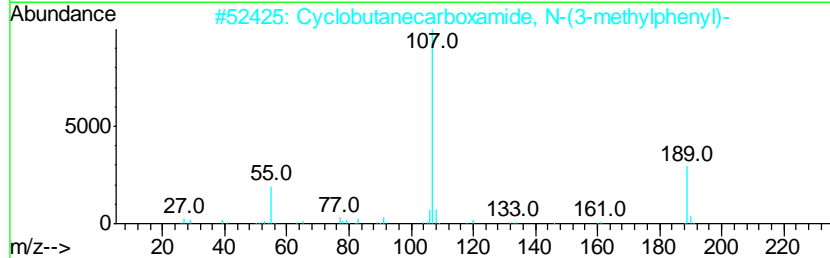
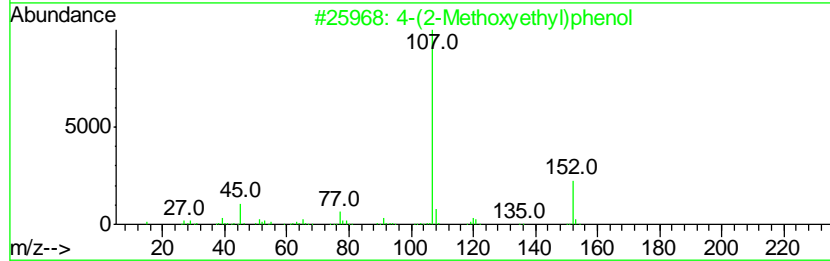
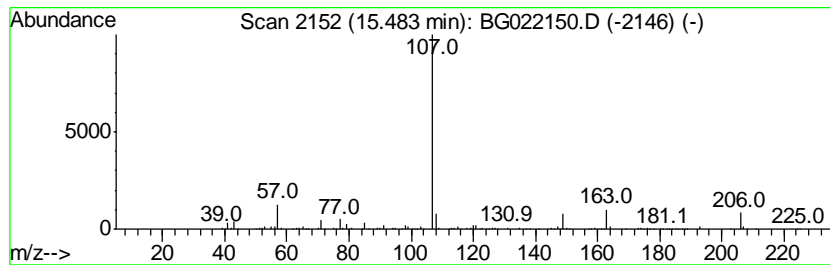
TIC Library : C:\Database\NIST11.L  
 TIC Integration Parameters: LSCINT.P

\*\*\*\*\*  
 Peak Number 31 4-(2-Methoxyethyl)phenol Concentration Rank 62

R.T.	EstConc	Area	Relative to ISTD	R.T.
15.48	10.52 ng/ul	320169	Acenaphthene-d10	14.77

Hit#	of	Tentative ID	MW	MolForm	CAS#	Qual
1	5	4-(2-Methoxyethyl)phenol	152	C9H12O2	056718-71-9	50
2		Cyclobutanecarboxamide, N-(3-met...	189	C12H15NO	1000307-04-7	40
3		Pentanamide, N-(3-methylphenyl)-	191	C12H17NO	1000306-89-1	38
4		Pent-4-enoic acid, 2-(4-hydroxyb...	206	C12H14O3	1000262-51-1	35
5		Phenol, 4-octyl-	206	C14H22O	001806-26-4	35



Data Path : Z:\HPCHEM1\BNA G\DATA\BG060216\  
 Data File : BG022150.D  
 Acq On : 2 Jun 2016 12:48  
 Operator : UM/SJ  
 Sample : H3302-07  
 Misc :  
 ALS Vial : 5 Sample Multiplier: 1

Instrument :  
 BNA\_G  
 ClientSampled :  
 CB203

Quant Method : Z:\HPCHEM1\BNA G\METHODS\SOM02.2-EPA-BG052116.M  
 Quant Title : SVOA CALIBRATION

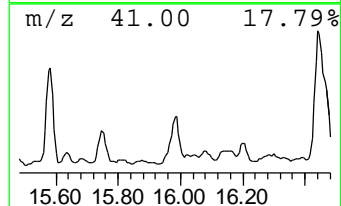
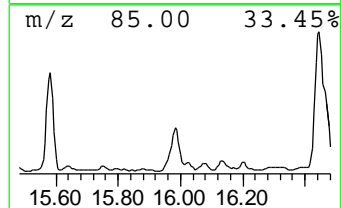
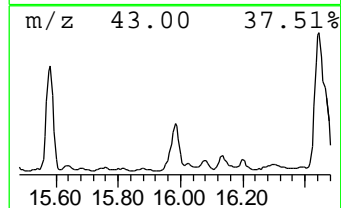
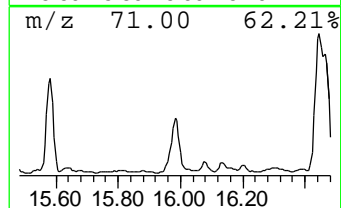
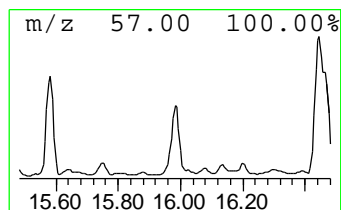
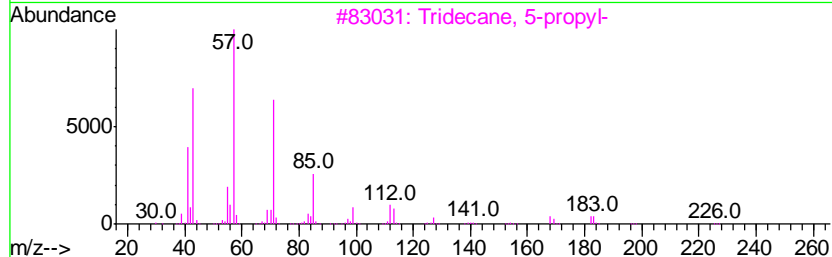
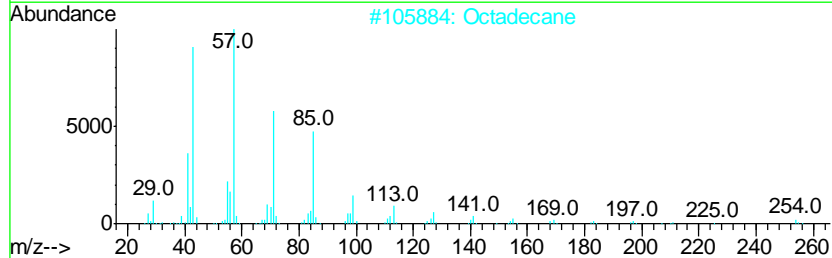
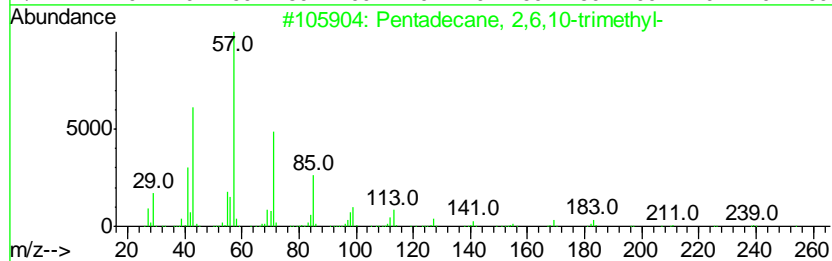
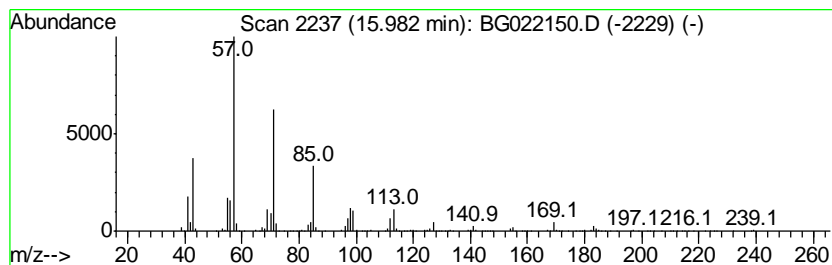
TIC Library : C:\Database\NIST11.L  
 TIC Integration Parameters: LSCINT.P

\*\*\*\*\*  
 Peak Number 34 (DEL) Alkane: Straight-Chai... Concentration Rank 13

R.T.	EstConc	Area	Relative to ISTD	R.T.
15.98	38.10 ng/ul	1159690	Acenaphthene-d10	14.77

Hit#	of	Tentative ID	MW	MolForm	CAS#	Qual
1	5	Pentadecane, 2,6,10-trimethyl-	254	C18H38	003892-00-0	90
2		Octadecane	254	C18H38	000593-45-3	86
3		Tridecane, 5-propyl-	226	C16H34	055045-11-9	86
4		Heptacosane	380	C27H56	000593-49-7	80
5		Octadecane, 1-iodo-	380	C18H37I	000629-93-6	80



Data Path : Z:\HPCHEM1\BNA G\DATA\BG060216\  
 Data File : BG022150.D  
 Acq On : 2 Jun 2016 12:48  
 Operator : UM/SJ  
 Sample : H3302-07  
 Misc :  
 ALS Vial : 5 Sample Multiplier: 1

Instrument :  
 BNA\_G  
 ClientSampled :  
 CB203

Quant Method : Z:\HPCHEM1\BNA G\METHODS\SOM02.2-EPA-BG052116.M  
 Quant Title : SVOA CALIBRATION

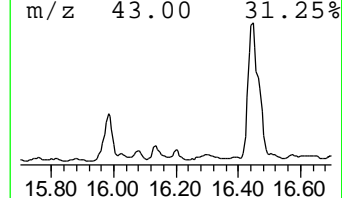
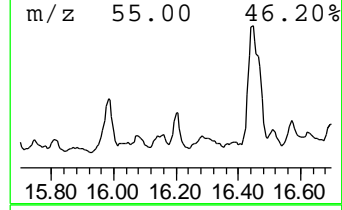
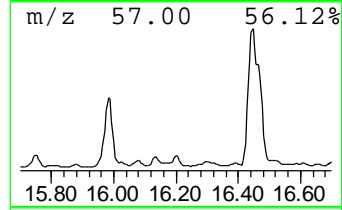
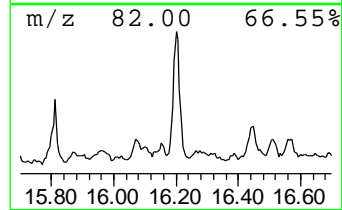
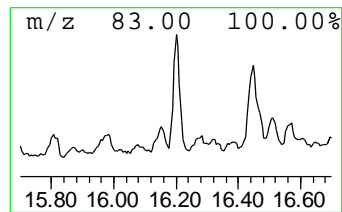
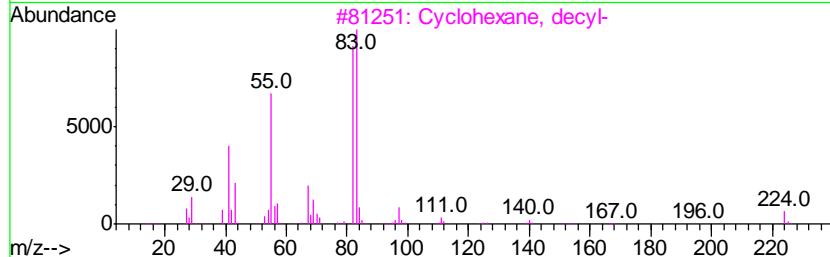
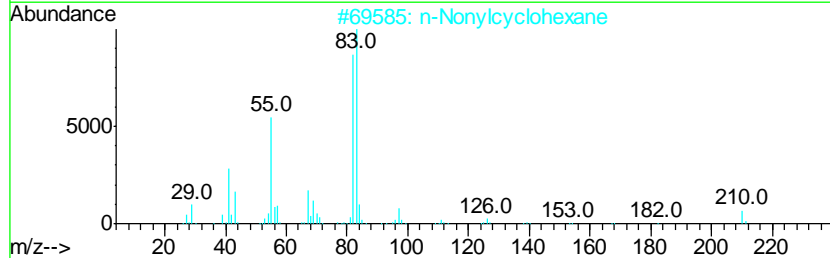
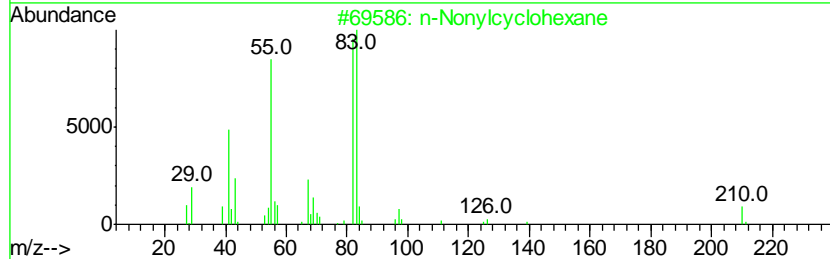
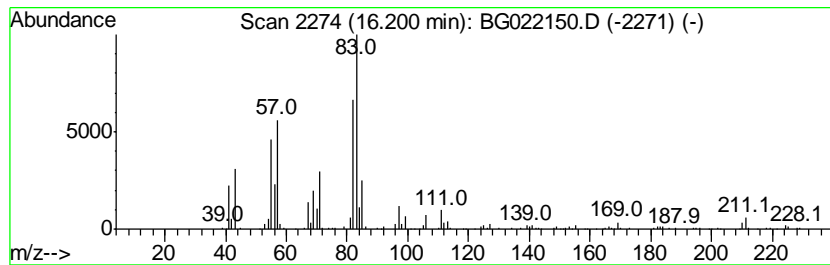
TIC Library : C:\Database\NIST11.L  
 TIC Integration Parameters: LSCINT.P

\*\*\*\*\*  
 Peak Number 36 (DEL) Alkane: Cyclic16.20 Concentration Rank 63

R.T.	EstConc	Area	Relative to ISTD	R.T.
16.20	10.49 ng/ul	311655	Phenanthrene-d10	17.51

Hit#	of	Tentative ID	MW	MolForm	CAS#	Qual
1	5	n-Nonylcyclohexane	210	C15H30	002883-02-5	62
2		n-Nonylcyclohexane	210	C15H30	002883-02-5	53
3		Cyclohexane, decyl-	224	C16H32	001795-16-0	53
4		Heptylcyclohexane	182	C13H26	005617-41-4	52
5		Cyclohexane, decyl-	224	C16H32	001795-16-0	50



Data Path : Z:\HPCHEM1\BNA G\DATA\BG060216\  
 Data File : BG022150.D  
 Acq On : 2 Jun 2016 12:48  
 Operator : UM/SJ  
 Sample : H3302-07  
 Misc :  
 ALS Vial : 5 Sample Multiplier: 1

Instrument :  
 BNA\_G  
 ClientSampleID :  
 CB203

Quant Method : Z:\HPCHEM1\BNA G\METHODS\SOM02.2-EPA-BG052116.M  
 Quant Title : SVOA CALIBRATION

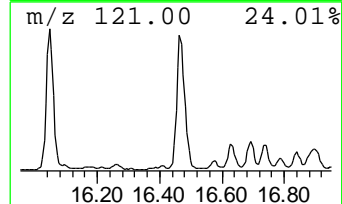
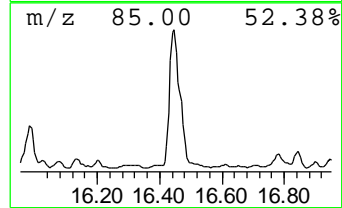
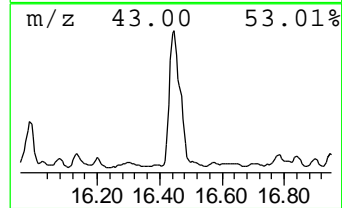
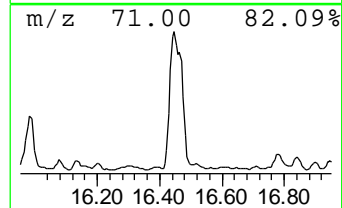
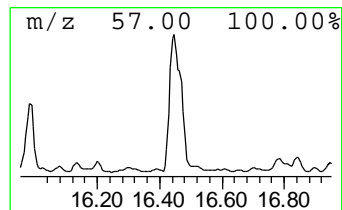
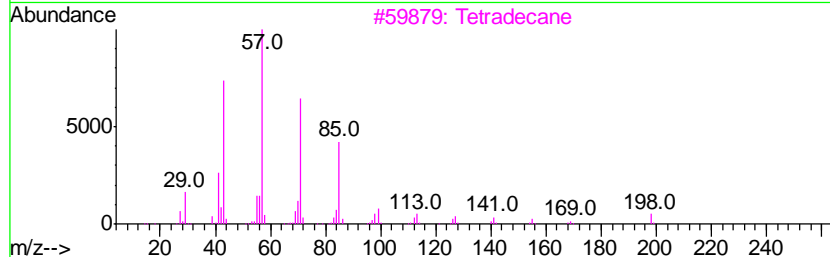
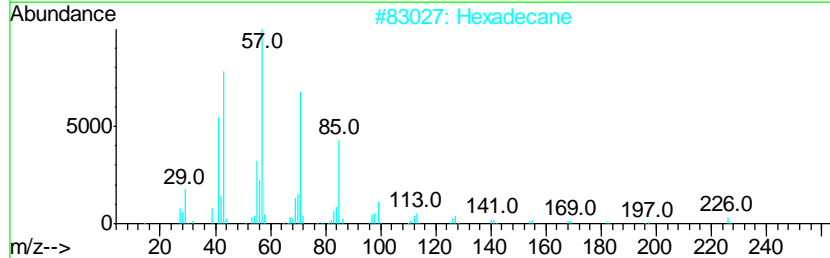
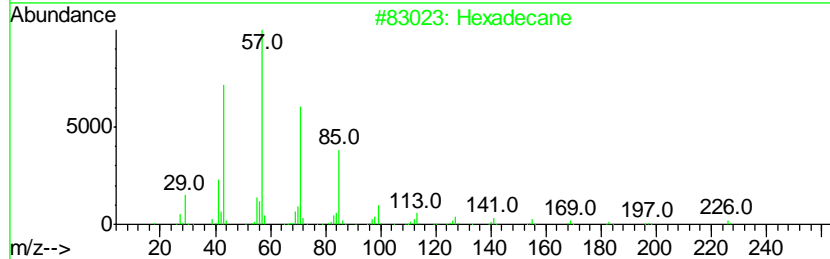
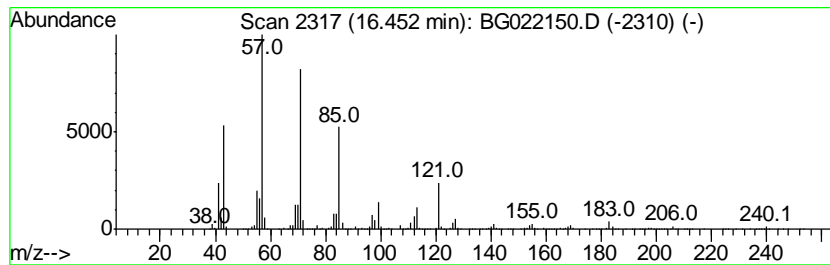
TIC Library : C:\Database\NIST11.L  
 TIC Integration Parameters: LSCINT.P

\*\*\*\*\*  
 Peak Number 37 (DEL) Alkane: Straight-Chai... Concentration Rank 1

R.T.	EstConc	Area	Relative to ISTD	R.T.
16.45	83.07 ng/ul	2468300	Phenanthrene-d10	17.51

Hit#	of	Tentative ID	MW	MolForm	CAS#	Qual
1	5	Hexadecane	226	C16H34	000544-76-3	90
2		Hexadecane	226	C16H34	000544-76-3	90
3		Tetradecane	198	C14H30	000629-59-4	90
4		Dodecane, 4-methyl-	184	C13H28	006117-97-1	87
5		Heptadecane	240	C17H36	000629-78-7	86





Data Path : Z:\HPCHEM1\BNA G\DATA\BG060216\  
 Data File : BG022150.D  
 Acq On : 2 Jun 2016 12:48  
 Operator : UM/SJ  
 Sample : H3302-07  
 Misc :  
 ALS Vial : 5 Sample Multiplier: 1

Instrument :  
 BNA\_G  
 ClientSampleID :  
 CB203

Quant Method : Z:\HPCHEM1\BNA G\METHODS\SOM02.2-EPA-BG052116.M  
 Quant Title : SVOA CALIBRATION

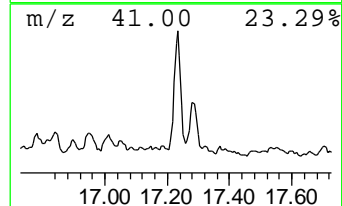
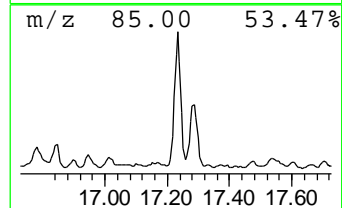
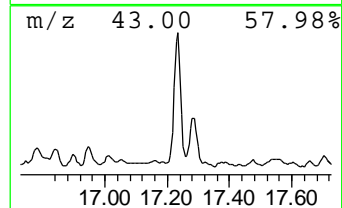
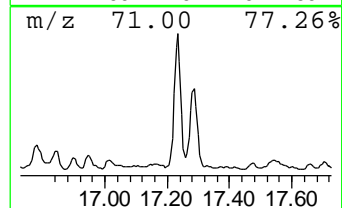
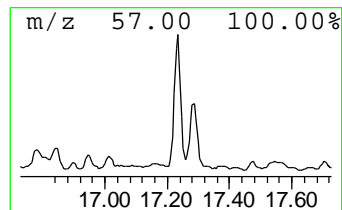
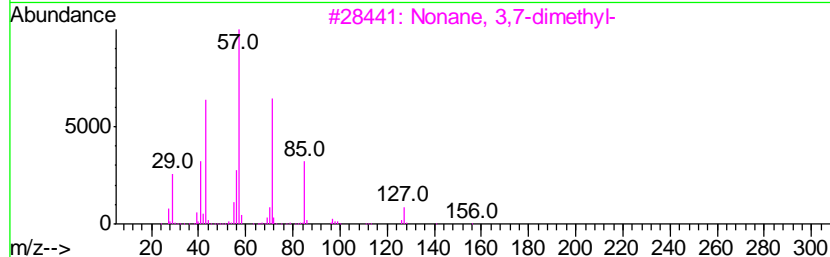
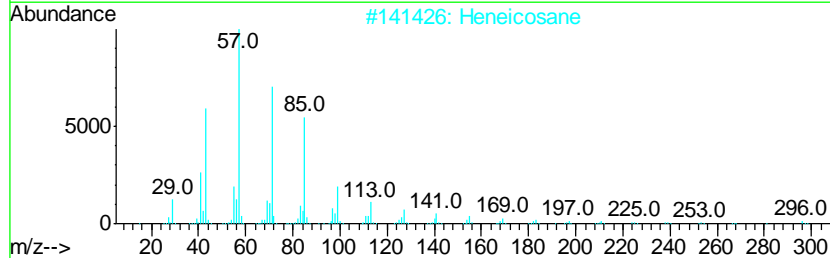
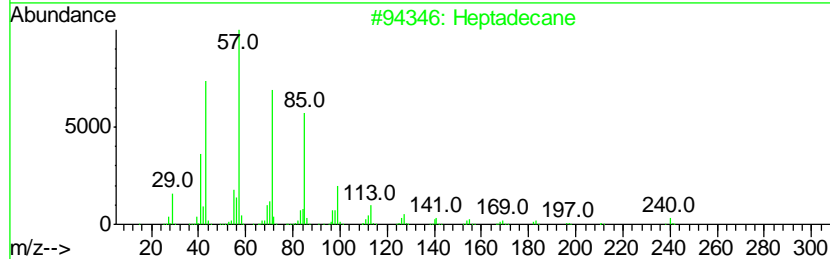
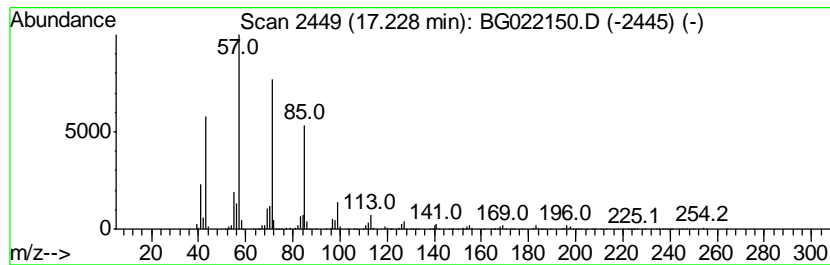
TIC Library : C:\Database\NIST11.L  
 TIC Integration Parameters: LSCINT.P

\*\*\*\*\*  
 Peak Number 43 (DEL) Alkane: Straight-Chai... Concentration Rank 12

R.T.	EstConc	Area	Relative to ISTD	R.T.
17.23	40.74 ng/ul	1210410	Phenanthrene-d10	17.51

Hit#	of	Tentative ID	MW	MolForm	CAS#	Qual
1	5	Heptadecane	240	C17H36	000629-78-7	96
2		Heneicosane	296	C21H44	000629-94-7	90
3		Nonane, 3,7-dimethyl-	156	C11H24	017302-32-8	83
4		Hexadecane	226	C16H34	000544-76-3	80
5		Hexadecane, 7,9-dimethyl-	254	C18H38	021164-95-4	76



Data Path : Z:\HPCHEM1\BNA G\DATA\BG060216\  
 Data File : BG022150.D  
 Acq On : 2 Jun 2016 12:48  
 Operator : UM/SJ  
 Sample : H3302-07  
 Misc :  
 ALS Vial : 5 Sample Multiplier: 1

Instrument :  
 BNA\_G  
 ClientSampleID :  
 CB203

Quant Method : Z:\HPCHEM1\BNA G\METHODS\SOM02.2-EPA-BG052116.M  
 Quant Title : SVOA CALIBRATION

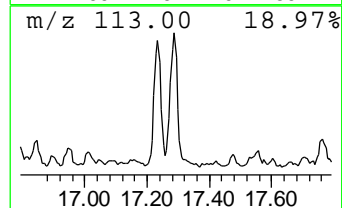
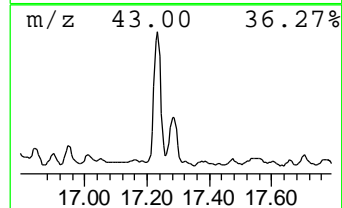
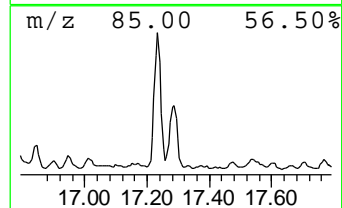
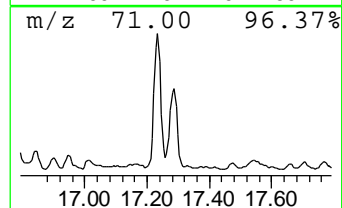
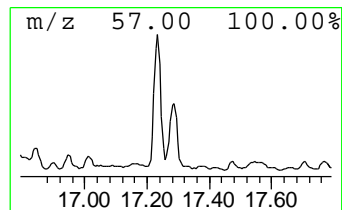
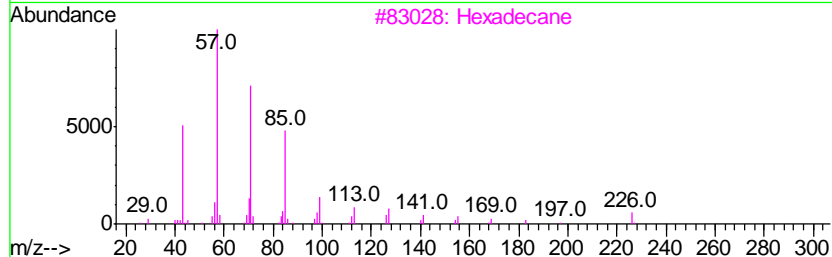
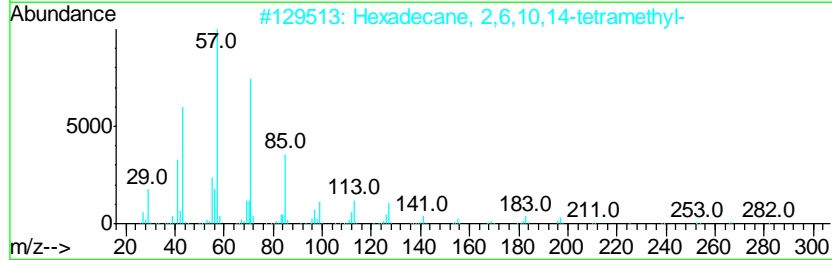
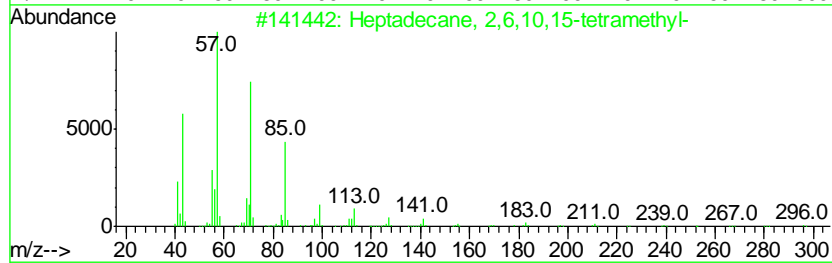
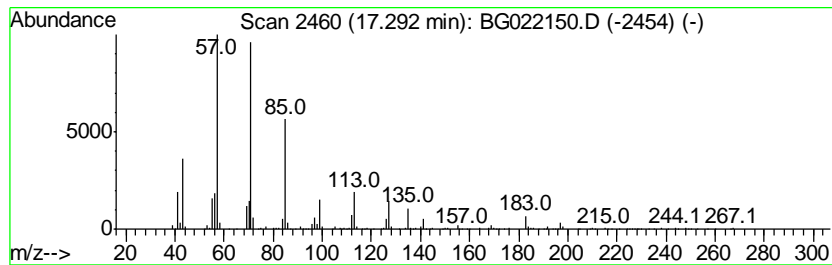
TIC Library : C:\Database\NIST11.L  
 TIC Integration Parameters: LSCINT.P

\*\*\*\*\*  
 Peak Number 44 (DEL) Alkane: Straight-Chai... Concentration Rank 32

R.T.	EstConc	Area	Relative to ISTD	R.T.
17.29	22.85 ng/ul	678885	Phenanthrene-d10	17.51

Hit#	of	Tentative ID	MW	MolForm	CAS#	Qual
1	5	Heptadecane, 2,6,10,15-tetramethyl-	296	C21H44	054833-48-6	86
2		Hexadecane, 2,6,10,14-tetramethyl-	282	C20H42	000638-36-8	83
3		Hexadecane	226	C16H34	000544-76-3	80
4		Undecane, 3,8-dimethyl-	184	C13H28	017301-30-3	78
5		Tridecane, 3-methyl-	198	C14H30	006418-41-3	72



Data Path : Z:\HPCHEM1\BNA G\DATA\BG060216\  
 Data File : BG022150.D  
 Acq On : 2 Jun 2016 12:48  
 Operator : UM/SJ  
 Sample : H3302-07  
 Misc :  
 ALS Vial : 5 Sample Multiplier: 1

Instrument :  
 BNA\_G  
 ClientSampleID :  
 CB203

Quant Method : Z:\HPCHEM1\BNA G\METHODS\SOM02.2-EPA-BG052116.M  
 Quant Title : SVOA CALIBRATION

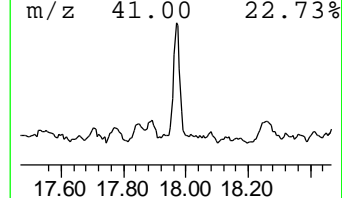
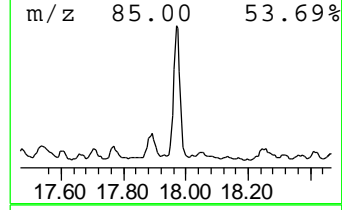
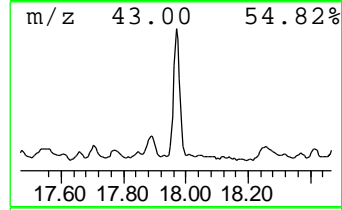
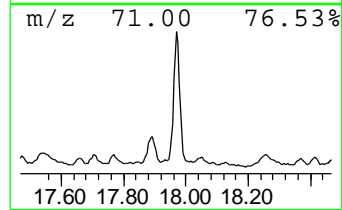
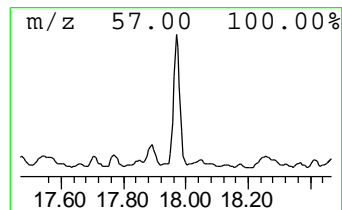
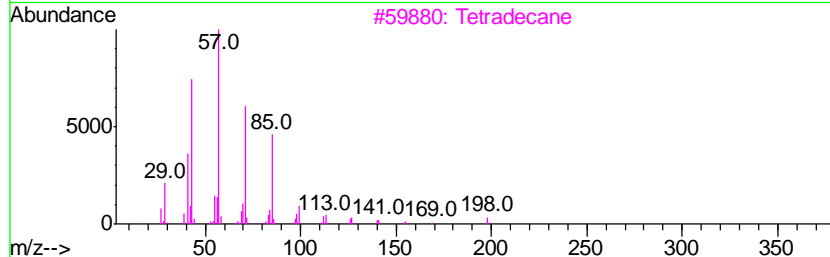
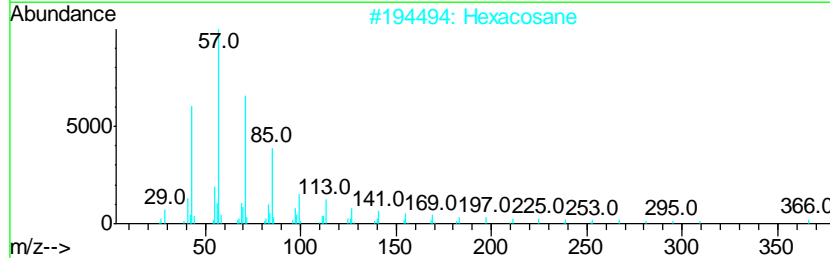
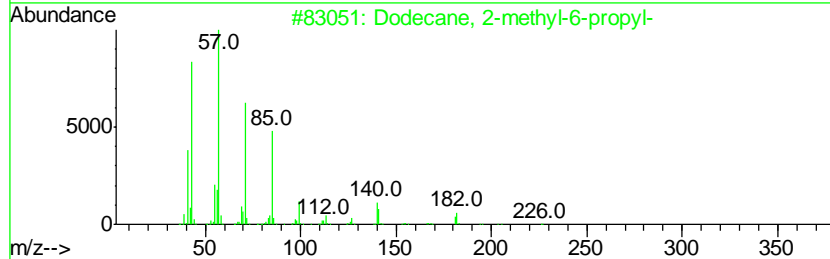
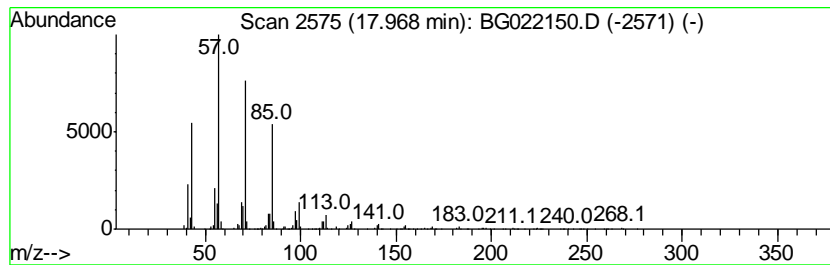
TIC Library : C:\Database\NIST11.L  
 TIC Integration Parameters: LSCINT.P

\*\*\*\*\*  
 Peak Number 47 (DEL) Alkane: Straight-Chai... Concentration Rank 24

R.T.	EstConc	Area	Relative to ISTD	R.T.
17.97	30.52 ng/ul	906685	Phenanthrene-d10	17.51

Hit#	of	Tentative ID	MW	MolForm	CAS#	Qual
1	5	Dodecane, 2-methyl-6-propyl-	226	C16H34	055045-08-4	91
2		Hexacosane	366	C26H54	000630-01-3	90
3		Tetradecane	198	C14H30	000629-59-4	90
4		Hexadecane	226	C16H34	000544-76-3	86
5		Sulfurous acid, 2-ethylhexyl iso...	278	C14H30O3S	1000309-19-0	80



Data Path : Z:\HPCHEM1\BNA G\DATA\BG060216\  
 Data File : BG022150.D  
 Acq On : 2 Jun 2016 12:48  
 Operator : UM/SJ  
 Sample : H3302-07  
 Misc :  
 ALS Vial : 5 Sample Multiplier: 1

Instrument :  
 BNA\_G  
 ClientSampleID :  
 CB203

Quant Method : Z:\HPCHEM1\BNA G\METHODS\SOM02.2-EPA-BG052116.M  
 Quant Title : SVOA CALIBRATION

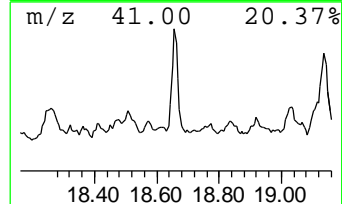
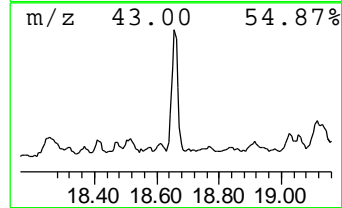
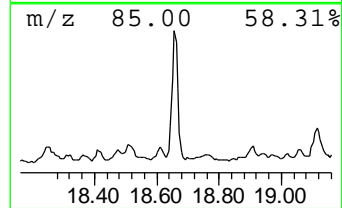
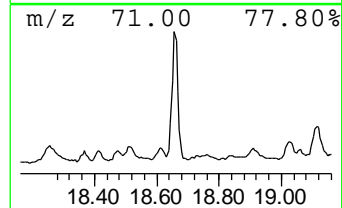
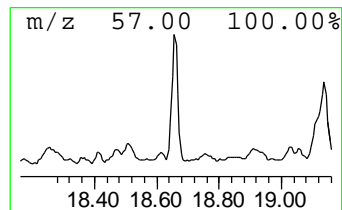
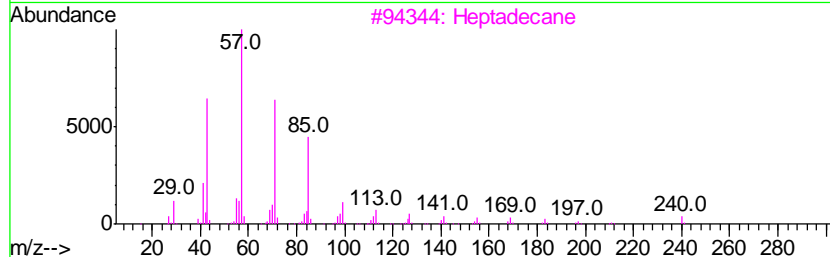
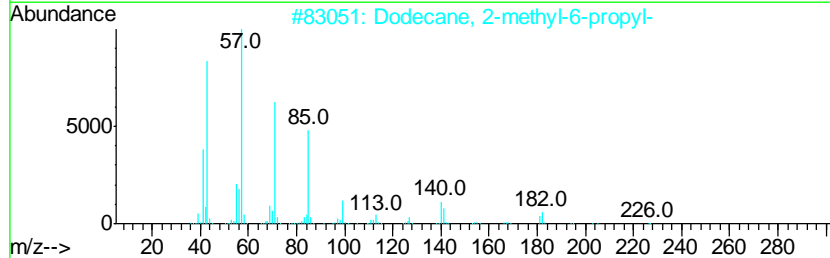
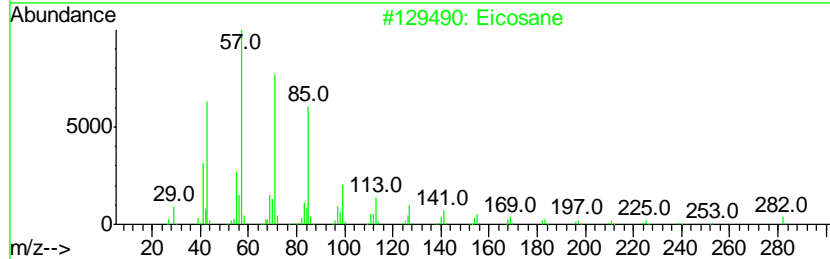
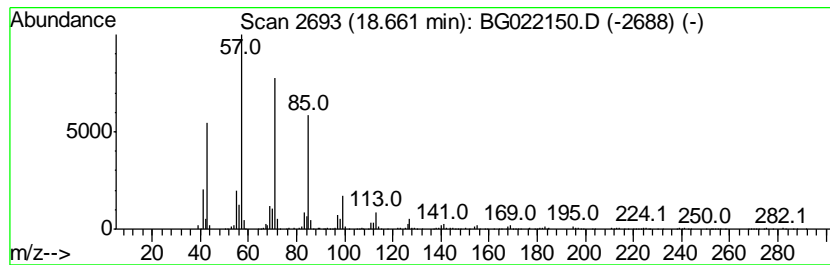
TIC Library : C:\Database\NIST11.L  
 TIC Integration Parameters: LSCINT.P

\*\*\*\*\*  
 Peak Number 49 (DEL) Alkane: Straight-Chai... Concentration Rank 40

R.T.	EstConc	Area	Relative to ISTD	R.T.
18.66	19.62 ng/ul	582828	Phenanthrene-d10	17.51

Hit#	of	Tentative ID	MW	MolForm	CAS#	Qual
1	5	Eicosane	282	C20H42	000112-95-8	97
2		Dodecane, 2-methyl-6-propyl-	226	C16H34	055045-08-4	90
3		Heptadecane	240	C17H36	000629-78-7	90
4		Hexadecane	226	C16H34	000544-76-3	90
5		Sulfurous acid, 2-ethylhexyl iso...	278	C14H30O3S	1000309-19-0	80



Data Path : Z:\HPCHEM1\BNA G\DATA\BG060216\  
 Data File : BG022150.D  
 Acq On : 2 Jun 2016 12:48  
 Operator : UM/SJ  
 Sample : H3302-07  
 Misc :  
 ALS Vial : 5 Sample Multiplier: 1

Instrument :  
 BNA\_G  
 ClientSampleId :  
 CB203

Quant Method : Z:\HPCHEM1\BNA G\METHODS\SOM02.2-EPA-BG052116.M  
 Quant Title : SVOA CALIBRATION

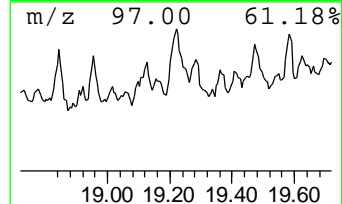
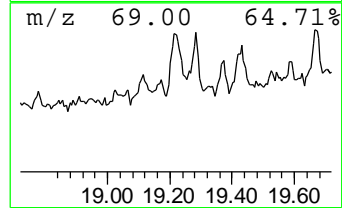
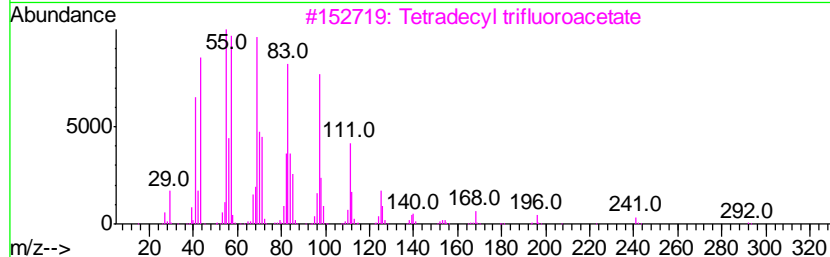
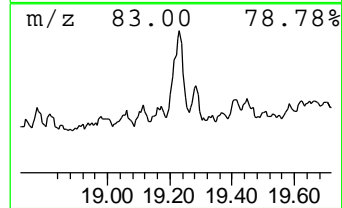
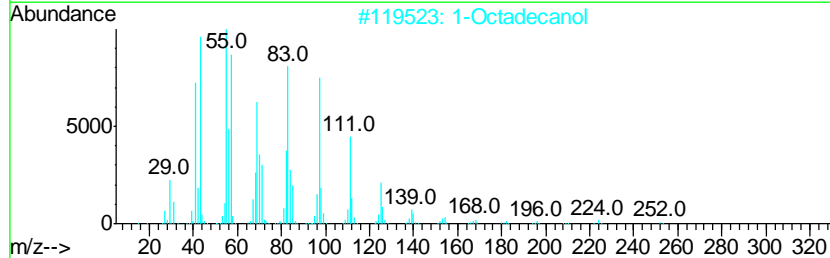
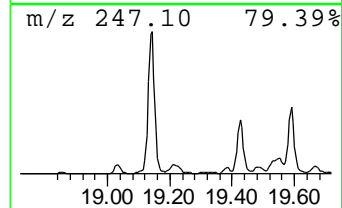
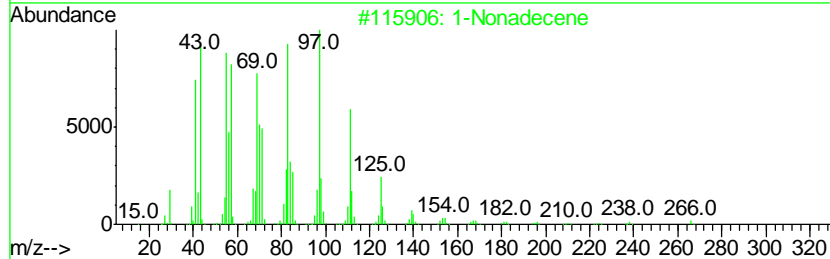
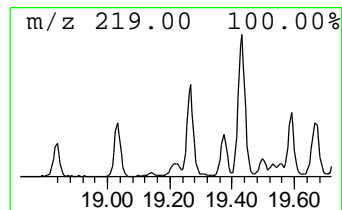
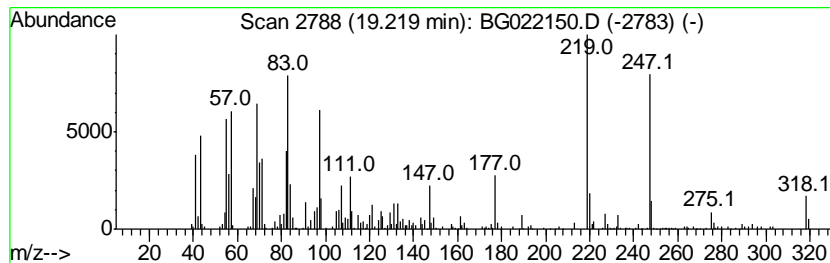
TIC Library : C:\Database\NIST11.L  
 TIC Integration Parameters: LSCINT.P

\*\*\*\*\*  
 Peak Number 52 (DEL) Alkane: Cyclic19.22 Concentration Rank 49

R.T.	EstConc	Area	Relative to ISTD	R.T.
19.22	14.62 ng/ul	434279	Phenanthrene-d10	17.51

Hit#	of	Tentative ID	MW	MolForm	CAS#	Qual
1	5	1-Nonadecene	266	C19H38	018435-45-5	30
2		1-Octadecanol	270	C18H38O	000112-92-5	25
3		Tetradecyl trifluoroacetate	310	C16H29F3O2	006222-02-2	25
4		4,5-Dihydro-N-(p-methoxyphenyl)-...	219	C12H13NO3	158725-14-5	25
5		Chloroacetic acid, pentadecyl ester	304	C17H33ClO2	070301-47-2	25



Data Path : Z:\HPCHEM1\BNA G\DATA\BG060216\  
 Data File : BG022150.D  
 Acq On : 2 Jun 2016 12:48  
 Operator : UM/SJ  
 Sample : H3302-07  
 Misc :  
 ALS Vial : 5 Sample Multiplier: 1

Instrument :  
 BNA\_G  
 ClientSampleID :  
 CB203

Quant Method : Z:\HPCHEM1\BNA G\METHODS\SOM02.2-EPA-BG052116.M  
 Quant Title : SVOA CALIBRATION

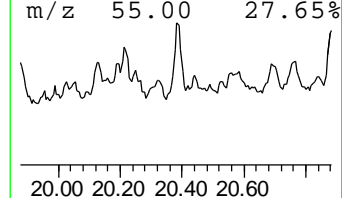
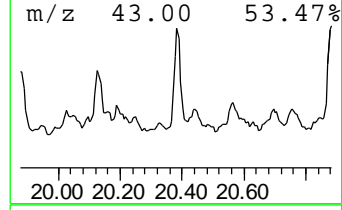
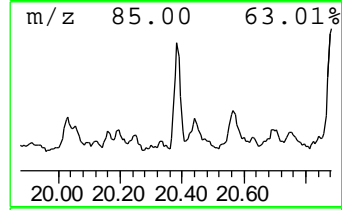
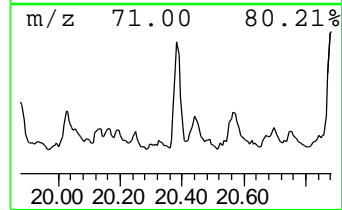
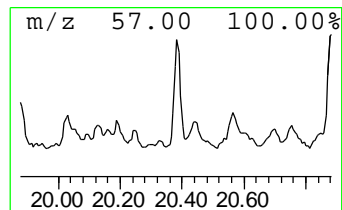
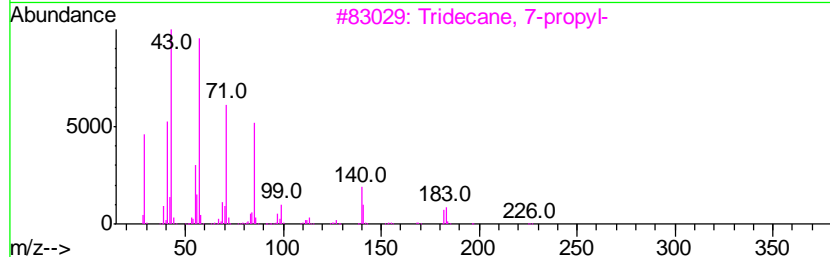
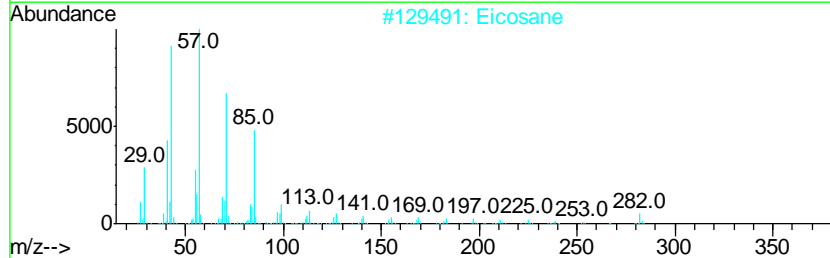
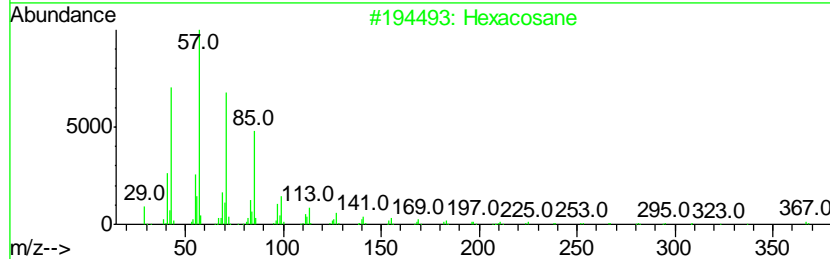
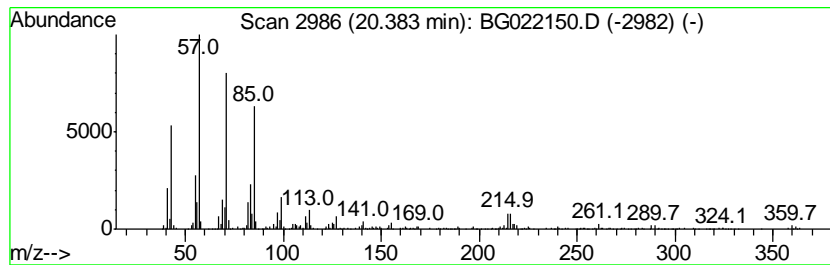
TIC Library : C:\Database\NIST11.L  
 TIC Integration Parameters: LSCINT.P

\*\*\*\*\*  
 Peak Number 61 (DEL) Alkane: Cyclic20.38 Concentration Rank 35

R.T.	EstConc	Area	Relative to ISTD	R.T.
20.38	21.65 ng/ul	797747	Chrysene-d12	21.79

Hit#	of	Tentative ID	MW	MolForm	CAS#	Qual
1	5	Hexacosane	366	C26H54	000630-01-3	83
2		Eicosane	282	C20H42	000112-95-8	80
3		Tridecane, 7-propyl-	226	C16H34	055045-09-5	76
4		Heptadecane, 3-methyl-	254	C18H38	006418-44-6	74
5		Eicosane, 10-methyl-	296	C21H44	054833-23-7	74



Data Path : Z:\HPCHEM1\BNA G\DATA\BG060216\  
 Data File : BG022150.D  
 Acq On : 2 Jun 2016 12:48  
 Operator : UM/SJ  
 Sample : H3302-07  
 Misc :  
 ALS Vial : 5 Sample Multiplier: 1

Instrument :  
 BNA\_G  
 ClientSampled :  
 CB203

Quant Method : Z:\HPCHEM1\BNA G\METHODS\SOM02.2-EPA-BG052116.M  
 Quant Title : SVOA CALIBRATION

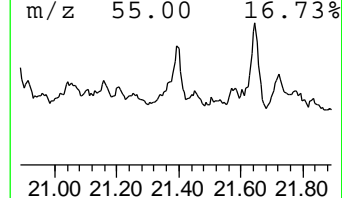
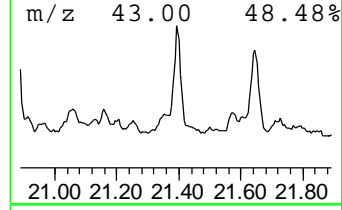
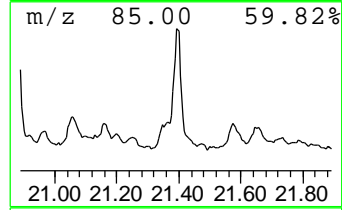
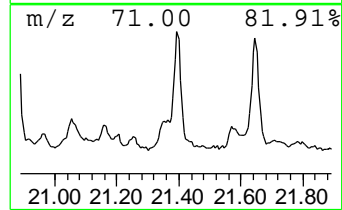
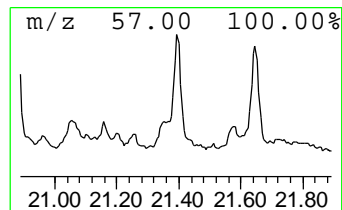
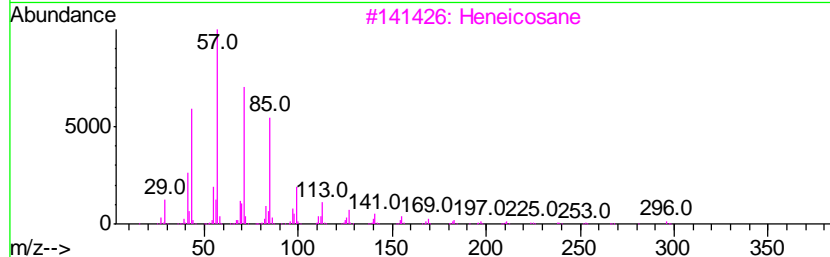
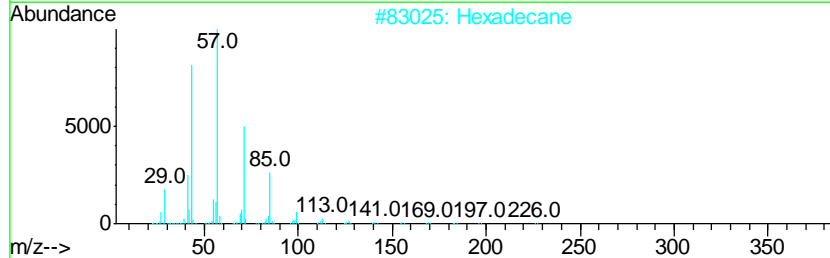
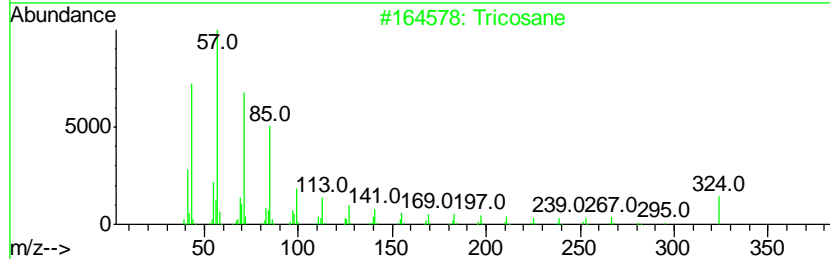
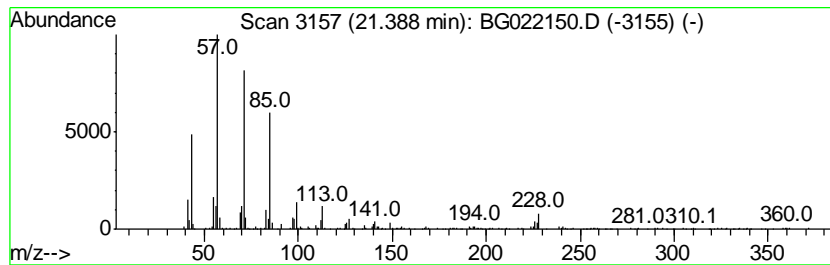
TIC Library : C:\Database\NIST11.L  
 TIC Integration Parameters: LSCINT.P

\*\*\*\*\*  
 Peak Number 64 (DEL) Alkane: Straight-Chai... Concentration Rank 47

R.T.	EstConc	Area	Relative to ISTD	R.T.
21.39	15.88 ng/ul	585004	Chrysene-d12	21.79

Hit#	of	Tentative ID	MW	MolForm	CAS#	Qual
1	5	Tricosane	324	C23H48	000638-67-5	93
2		Hexadecane	226	C16H34	000544-76-3	93
3		Heneicosane	296	C21H44	000629-94-7	90
4		Hexadecane	226	C16H34	000544-76-3	90
5		Octadecane	254	C18H38	000593-45-3	86



Data Path : Z:\HPCHEM1\BNA G\DATA\BG060216\  
 Data File : BG022150.D  
 Acq On : 2 Jun 2016 12:48  
 Operator : UM/SJ  
 Sample : H3302-07  
 Misc :  
 ALS Vial : 5 Sample Multiplier: 1

Instrument :  
 BNA\_G  
 ClientSampleID :  
 CB203

Quant Method : Z:\HPCHEM1\BNA G\METHODS\SOM02.2-EPA-BG052116.M  
 Quant Title : SVOA CALIBRATION

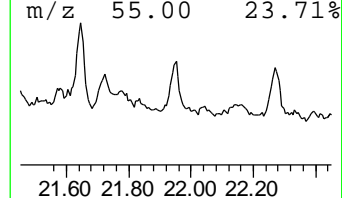
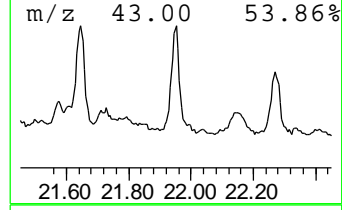
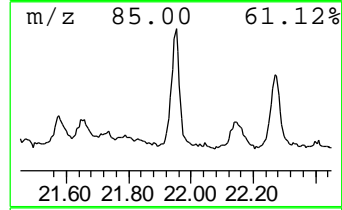
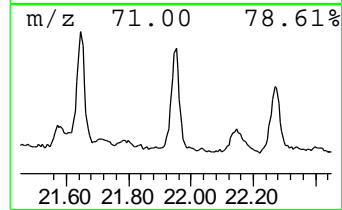
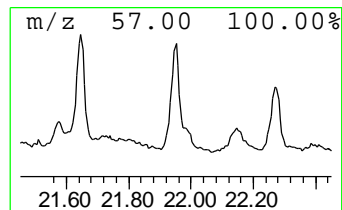
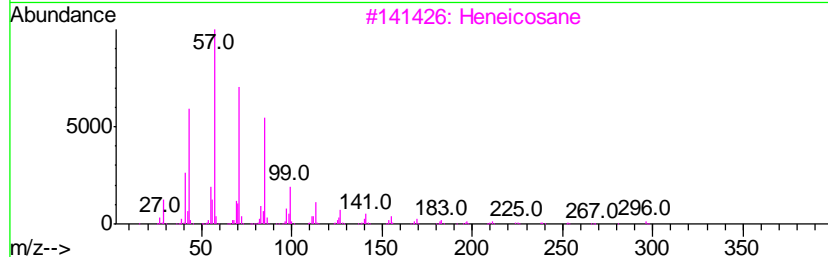
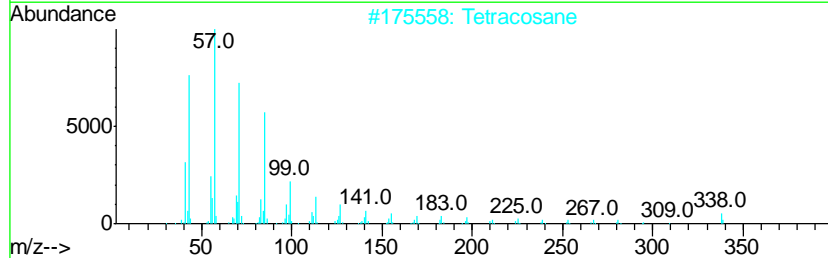
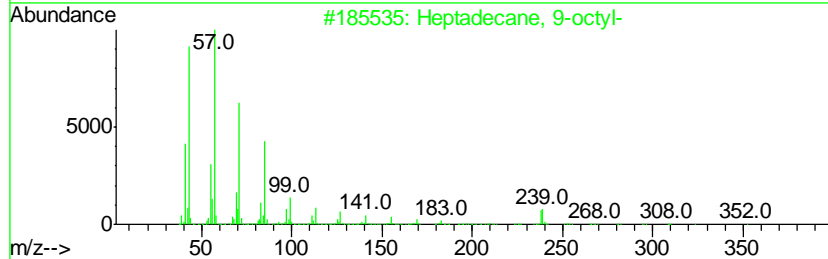
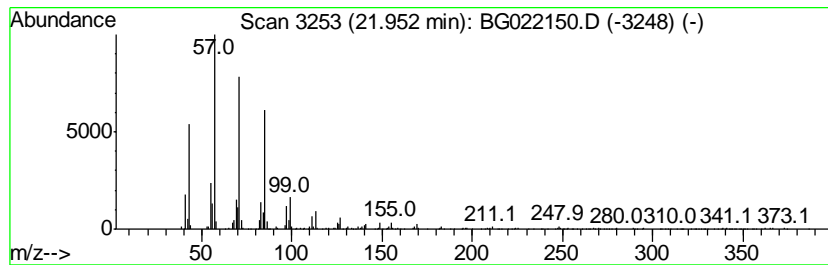
TIC Library : C:\Database\NIST11.L  
 TIC Integration Parameters: LSCINT.P

\*\*\*\*\*  
 Peak Number 65 (DEL) Alkane: Straight-Chai... Concentration Rank 55

R.T.	EstConc	Area	Relative to ISTD	R.T.
21.95	12.92 ng/ul	476054	Chrysene-d12	21.79

Hit#	of	Tentative ID	MW	MolForm	CAS#	Qual
1	5	Heptadecane, 9-octyl-	352	C25H52	007225-64-1	94
2		Tetracosane	338	C24H50	000646-31-1	91
3		Heneicosane	296	C21H44	000629-94-7	91
4		Hexacosane	366	C26H54	000630-01-3	90
5		Heneicosane	296	C21H44	000629-94-7	90





Data Path : Z:\HPCHEM1\BNA G\DATA\BG060216\  
 Data File : BG022150.D  
 Acq On : 2 Jun 2016 12:48  
 Operator : UM/SJ  
 Sample : H3302-07  
 Misc :  
 ALS Vial : 5 Sample Multiplier: 1

Instrument :  
 BNA\_G  
 ClientSampled :  
 CB203

Quant Method : Z:\HPCHEM1\BNA G\METHODS\SOM02.2-EPA-BG052116.M  
 Quant Title : SVOA CALIBRATION

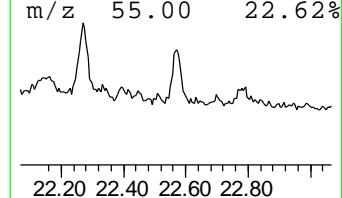
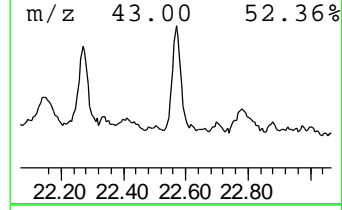
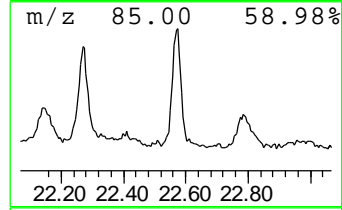
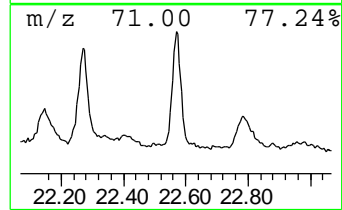
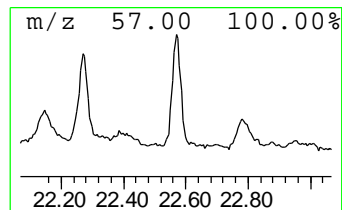
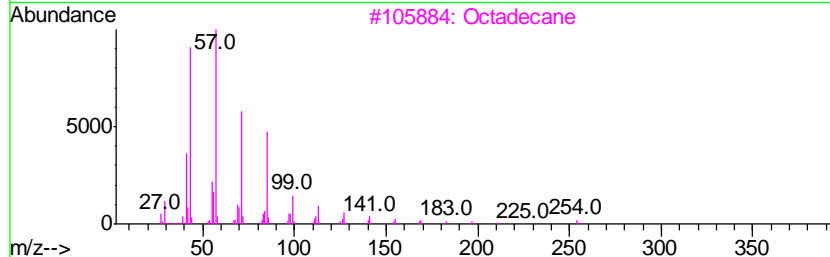
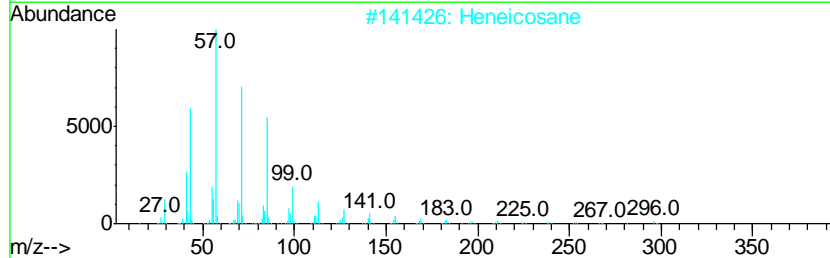
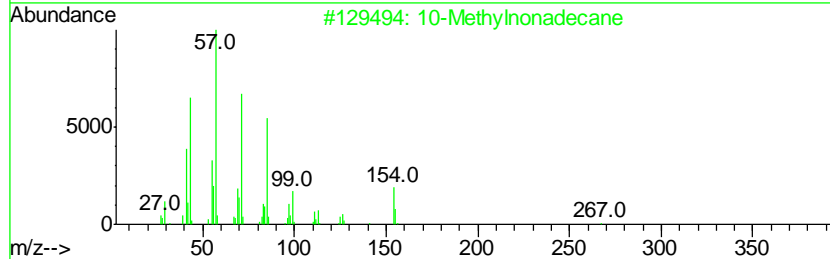
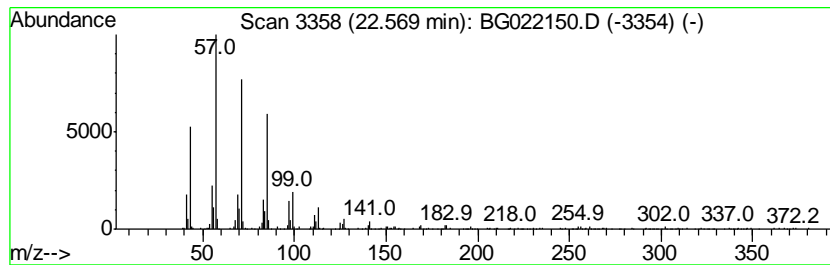
TIC Library : C:\Database\NIST11.L  
 TIC Integration Parameters: LSCINT.P

\*\*\*\*\*  
 Peak Number 67 (DEL) Alkane: Straight-Chai... Concentration Rank 57

R.T.	EstConc	Area	Relative to ISTD	R.T.
22.57	12.04 ng/ul	443487	Chrysene-d12	21.79

Hit#	of	Tentative ID	MW	MolForm	CAS#	Qual
1	5	10-Methylnonadecane	282	C20H42	056862-62-5	90
2		Heneicosane	296	C21H44	000629-94-7	87
3		Octadecane	254	C18H38	000593-45-3	86
4		Heptacosane	380	C27H56	000593-49-7	83
5		Tridecane, 1-iodo-	310	C13H27I	035599-77-0	81



Data Path : Z:\HPCHEM1\BNA G\DATA\BG060216\  
 Data File : BG022150.D  
 Acq On : 2 Jun 2016 12:48  
 Operator : UM/SJ  
 Sample : H3302-07  
 Misc :  
 ALS Vial : 5 Sample Multiplier: 1

Instrument :  
 BNA\_G  
 ClientSampleId :  
 CB203

Quant Method : Z:\HPCHEM1\BNA G\METHODS\SOM02.2-EPA-BG052116.M  
 Quant Title : SVOA CALIBRATION

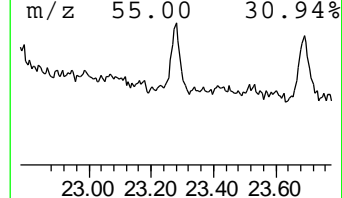
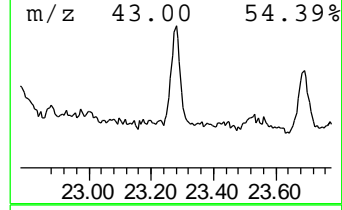
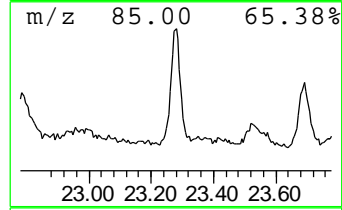
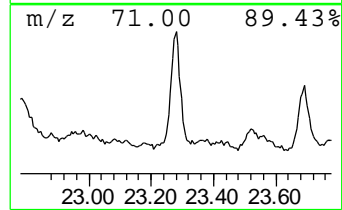
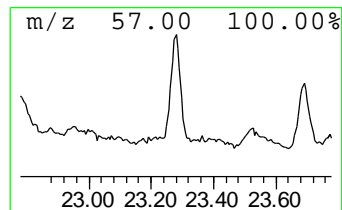
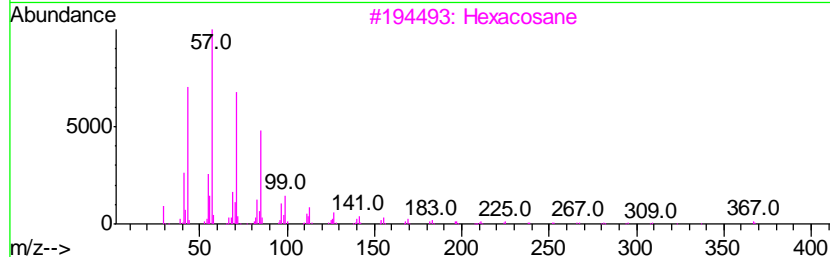
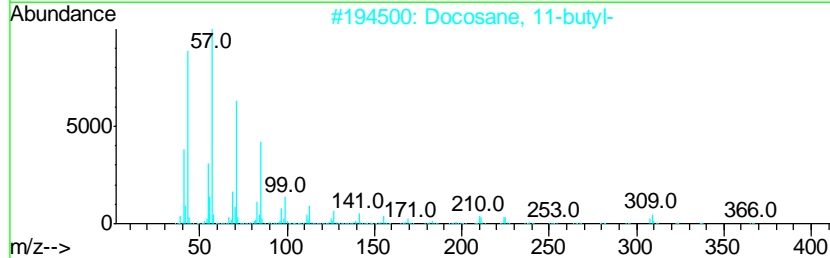
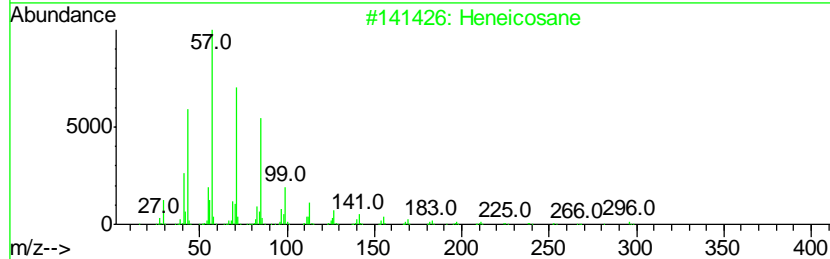
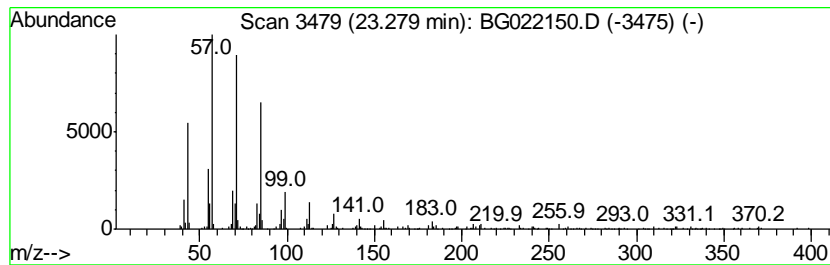
TIC Library : C:\Database\NIST11.L  
 TIC Integration Parameters: LSCINT.P

\*\*\*\*\*  
 Peak Number 68 (DEL) Alkane: Straight-Chai... Concentration Rank 66

R.T.	EstConc	Area	Relative to ISTD	R.T.
23.28	10.04 ng/ul	370032	Chrysene-d12	21.79

Hit#	of	Tentative ID	MW	MolForm	CAS#	Qual
1	5	Heneicosane	296	C21H44	000629-94-7	91
2		Docosane, 11-butyl-	366	C26H54	013475-76-8	91
3		Hexacosane	366	C26H54	000630-01-3	91
4		Heptacosane	380	C27H56	000593-49-7	91
5		Tetradecane	198	C14H30	000629-59-4	90



Data Path : Z:\HPCHEM1\BNA\_G\DATA\BG060216\  
 Data File : BG022150.D  
 Acq On : 2 Jun 2016 12:48  
 Operator : UM/SJ  
 Sample : H3302-07  
 Misc :  
 ALS Vial : 5 Sample Multiplier: 1

Instrument :  
 BNA\_G  
 ClientSampled :  
 CB203

Quant Method : Z:\HPCHEM1\BNA\_G\METHODS\SOM02.2-EPA-BG052116.M  
 Quant Title : SVOA CALIBRATION

TIC Library : C:\Database\NIST11.L  
 TIC Integration Parameters: LSCINT.P

TIC Top Hit name	RT	EstConc	Units	Response	--Internal Standard--			
					#	RT	Resp	Conc
Benzene, 1,3-dime...	5.75	18.9	ng/ul	263973	1	8.13	279580	20.0
(DEL) Alkane: Str...	7.10	18.7	ng/ul	261829	1	8.13	279580	20.0
(DEL) Alkane: Str...	7.73	59.5	ng/ul	832270	1	8.13	279580	20.0
Mesitylene	7.77	33.4	ng/ul	467106	1	8.13	279580	20.0
Benzene, 1,2,3-tr...	8.24	22.1	ng/ul	308425	1	8.13	279580	20.0
(DEL) Alkane: Str...	8.36	18.1	ng/ul	252721	1	8.13	279580	20.0
Benzene, 1-methyl...	8.67	77.4	ng/ul	1082450	1	8.13	279580	20.0
Benzene, 1,4-diet...	8.77	75.6	ng/ul	1056540	1	8.13	279580	20.0
Benzene, 2-ethyl-...	9.24	69.7	ng/ul	974313	1	8.13	279580	20.0
2,8-Decadiyne	9.48	32.3	ng/ul	451404	1	8.13	279580	20.0
Benzene, 1,2,4,5-...	9.77	36.9	ng/ul	817784	2	10.95	443656	20.0
Benzene, 1,2,3,4-...	9.82	57.8	ng/ul	1281670	2	10.95	443656	20.0
o-Cymene	10.14	19.9	ng/ul	441942	2	10.95	443656	20.0
1H-Indene, 2,3-di...	10.19	20.5	ng/ul	454995	2	10.95	443656	20.0
(3-Methylphenyl) ...	10.29	14.3	ng/ul	317933	2	10.95	443656	20.0
Benzene, 1-methyl...	10.40	21.8	ng/ul	483644	2	10.95	443656	20.0
(DEL) Alkane: Str...	10.90	23.7	ng/ul	525858	2	10.95	443656	20.0
(DEL) Alkane: Str...	12.33	14.6	ng/ul	323594	2	10.95	443656	20.0
Naphthalene, 1-pr...	13.80	20.3	ng/ul	619102	3	14.77	608829	20.0
Naphthalene, 2,6-...	13.94	31.0	ng/ul	943153	3	14.77	608829	20.0
Naphthalene, 2,7-...	14.08	29.6	ng/ul	899468	3	14.77	608829	20.0
Naphthalene, 2,3-...	14.32	13.1	ng/ul	399851	3	14.77	608829	20.0
(DEL) Alkane: Str...	14.63	25.8	ng/ul	784344	3	14.77	608829	20.0
(DEL) Alkane: Str...	15.24	18.3	ng/ul	558065	3	14.77	608829	20.0
4-(2-Methoxyethyl...	15.48	10.5	ng/ul	320169	3	14.77	608829	20.0
(DEL) Alkane: Str...	15.98	38.1	ng/ul	1159690	3	14.77	608829	20.0
(DEL) Alkane: Cyc...	16.20	10.5	ng/ul	311655	4	17.51	594242	20.0
(DEL) Alkane: Str...	16.45	83.1	ng/ul	2468300	4	17.51	594242	20.0
(DEL) Alkane: Str...	17.23	40.7	ng/ul	1210410	4	17.51	594242	20.0
(DEL) Alkane: Str...	17.29	22.9	ng/ul	678885	4	17.51	594242	20.0
(DEL) Alkane: Str...	17.97	30.5	ng/ul	906685	4	17.51	594242	20.0
(DEL) Alkane: Str...	18.66	19.6	ng/ul	582828	4	17.51	594242	20.0
(DEL) Alkane: Cyc...	19.22	14.6	ng/ul	434279	4	17.51	594242	20.0
(DEL) Alkane: Cyc...	20.38	21.6	ng/ul	797747	5	21.79	736812	20.0
(DEL) Alkane: Str...	21.39	15.9	ng/ul	585004	5	21.79	736812	20.0
(DEL) Alkane: Str...	21.95	12.9	ng/ul	476054	5	21.79	736812	20.0
(DEL) Alkane: Str...	22.57	12.0	ng/ul	443487	5	21.79	736812	20.0
(DEL) Alkane: Str...	23.28	10.0	ng/ul	370032	5	21.79	736812	20.0