

Data Path : Z:\HPCHEM1\BNA G\DATA\BG060216\  
 Data File : BG022154.D  
 Acq On : 2 Jun 2016 15:31  
 Operator : UM/SJ  
 Sample : H3302-08  
 Misc :  
 ALS Vial : 9 Sample Multiplier: 1

Instrument :  
 BNA\_G  
 ClientSampled :  
 CB204

## Integration Parameters: LSCINT.P

Integrator: RTE  
 Smoothing : OFF  
 Sampling : 1  
 Start Thrs: 0.2  
 Stop Thrs : 0

Filtering: 5  
 Min Area: 0.1 % of largest Peak  
 Max Peaks: 100  
 Peak Location: TOP

If leading or trailing edge < 100 prefer < Baseline drop else tangent >  
 Peak separation: 5

Method : Z:\HPCHEM1\BNA G\METHODS\SOM02.2-EPA-BG052116.M  
 Title : SVOA CALIBRATION

Signal : TIC

peak #	R.T. min	first scan	max scan	last scan	PK TY	peak height	corr. area	corr. % max.	% of total
1	3.496	109	112	115	rBV4	2646	3134	0.29%	0.026%
2	7.291	751	758	770	rBV	84765	177276	16.29%	1.457%
3	7.450	778	785	798	rVV	76716	150698	13.85%	1.239%
4	7.667	814	822	835	rBV	99912	201473	18.51%	1.656%
5	8.131	893	901	913	rBV	112333	229377	21.08%	1.885%
6	8.343	934	937	942	rBV3	1370	2471	0.23%	0.020%
7	8.842	1015	1022	1042	rBV2	136974	283738	26.07%	2.332%
8	9.306	1093	1101	1112	rBV	89554	192763	17.71%	1.584%
9	9.424	1119	1121	1124	rVB4	2178	2663	0.24%	0.022%
10	10.029	1217	1224	1242	rBV2	72905	157055	14.43%	1.291%
11	10.576	1308	1317	1331	rBV	133793	285437	26.23%	2.346%
12	10.952	1371	1381	1398	rBV	220195	447890	41.16%	3.682%
13	11.087	1398	1404	1415	rBV	84212	205401	18.87%	1.688%
14	12.532	1643	1650	1655	rBV3	2654	4458	0.41%	0.037%
15	13.114	1745	1749	1754	rBV3	2373	3565	0.33%	0.029%
16	13.361	1787	1791	1799	rVB4	3508	5614	0.52%	0.046%
17	13.637	1832	1838	1842	rBV3	2540	4280	0.39%	0.035%
18	14.160	1920	1927	1931	rBV	306920	507547	46.64%	4.172%
19	14.201	1931	1934	1942	rVB	53848	86819	7.98%	0.714%
20	14.459	1970	1978	1989	rBV	402934	705695	64.85%	5.801%
21	14.759	2022	2029	2038	rBV2	390559	693606	63.74%	5.701%
22	14.824	2038	2040	2044	rVB4	3163	3915	0.36%	0.032%
23	14.976	2060	2066	2087	rBV3	44126	133106	12.23%	1.094%
24	15.529	2155	2160	2164	rBV	6908	10478	0.96%	0.086%
25	15.576	2164	2168	2174	rVB4	5366	8556	0.79%	0.070%
26	15.752	2191	2198	2212	rBV	533035	897926	82.51%	7.381%
27	15.875	2212	2219	2230	rVV	92280	161228	14.82%	1.325%
28	15.987	2230	2238	2242	rVV6	6713	12257	1.13%	0.101%
29	16.433	2310	2314	2323	rVV4	10326	21339	1.96%	0.175%
30	16.621	2342	2346	2352	rBV4	6020	9197	0.85%	0.076%
31	16.845	2380	2384	2388	rVB3	2049	3247	0.30%	0.027%
32	16.886	2388	2391	2394	rBV3	1743	2407	0.22%	0.020%
33	16.950	2396	2402	2404	rBV5	2273	3678	0.34%	0.030%
34	17.227	2445	2449	2455	rVV2	11721	16612	1.53%	0.137%

Data Path : Z:\HPCHEM1\BNA G\DATA\BG060216\  
 Data File : BG022154.D  
 Acq On : 2 Jun 2016 15:31  
 Operator : UM/SJ  
 Sample : H3302-08  
 Misc :  
 ALS Vial : 9 Sample Multiplier: 1

Instrument :  
 BNA\_G  
 ClientSampleId :  
 CB204

## Integration Parameters: LSCINT.P

Integrator: RTE  
 Smoothing : OFF  
 Sampling : 1  
 Start Thrs: 0.2  
 Stop Thrs : 0

Filtering: 5  
 Min Area: 0.1 % of largest Peak  
 Max Peaks: 100  
 Peak Location: TOP

If leading or trailing edge < 100 prefer < Baseline drop else tangent >  
 Peak separation: 5

Method : Z:\HPCHEM1\BNA G\METHODS\SOM02.2-EPA-BG052116.M  
 Title : SVOA CALIBRATION

35	17.285	2455	2459	2468	rVB6	4647	9868	0.91%	0.081%
36	17.503	2488	2496	2503	rBV2	464034	806492	74.11%	6.629%
37	17.603	2507	2513	2528	rVV2	516133	894411	82.19%	7.352%
38	17.761	2538	2540	2545	rVB4	2462	4154	0.38%	0.034%
39	17.855	2549	2556	2571	rBV4	36171	82286	7.56%	0.676%
40	17.967	2571	2575	2580	rVV3	7915	12160	1.12%	0.100%
41	18.143	2600	2605	2608	rVV4	2775	4154	0.38%	0.034%
42	18.231	2616	2620	2622	rBV2	1526	2027	0.19%	0.017%
43	18.443	2650	2656	2663	rVB3	6075	11037	1.01%	0.091%
44	18.507	2663	2667	2670	rVB4	2290	2802	0.26%	0.023%
45	18.578	2672	2679	2681	rBV7	4644	8569	0.79%	0.070%
46	18.654	2687	2692	2697	rVB5	5738	8922	0.82%	0.073%
47	18.742	2703	2707	2710	rBV5	1495	2477	0.23%	0.020%
48	18.784	2711	2714	2718	rVB5	2549	3763	0.35%	0.031%
49	18.942	2737	2741	2743	rVB4	3049	2828	0.26%	0.023%
50	19.107	2767	2769	2773	rBV5	2318	3040	0.28%	0.025%
51	19.224	2783	2789	2794	rBV5	8122	15852	1.46%	0.130%
52	19.277	2794	2798	2804	rVV4	10285	15277	1.40%	0.126%
53	19.412	2818	2821	2822	rBV3	1827	2132	0.20%	0.018%
54	19.547	2834	2844	2850	rVV3	23027	53650	4.93%	0.441%
55	19.641	2859	2860	2864	rBV4	2142	2030	0.19%	0.017%
56	19.771	2878	2882	2888	rVB3	6335	9914	0.91%	0.081%
57	19.882	2890	2901	2916	rBV	664408	1088218	100.00%	8.945%
58	20.047	2927	2929	2931	rVB3	3989	2324	0.21%	0.019%
59	20.205	2953	2956	2960	rBV2	12493	19898	1.83%	0.164%
60	20.317	2972	2975	2977	rBV4	3513	5069	0.47%	0.042%
61	20.376	2979	2985	2996	rVB7	23225	61928	5.69%	0.509%
62	20.875	3066	3070	3078	rBV5	9289	14665	1.35%	0.121%
63	21.198	3123	3125	3127	rBV3	4306	3572	0.33%	0.029%
64	21.392	3152	3158	3167	rBV2	82900	170635	15.68%	1.403%
65	21.633	3197	3199	3205	rVB5	8510	14019	1.29%	0.115%
66	21.780	3217	3224	3241	rVB	439675	889118	81.70%	7.308%
67	21.945	3249	3252	3257	rBV6	8247	13244	1.22%	0.109%
68	22.567	3351	3358	3359	rBV3	24400	40033	3.68%	0.329%
69	22.597	3359	3363	3375	rVB9	35242	113189	10.40%	0.930%
70	22.791	3394	3396	3397	rBV	3990	2654	0.24%	0.022%
71	23.061	3439	3442	3446	rBV6	3832	7536	0.69%	0.062%

Data Path : Z:\HPCHEM1\BNA G\DATA\BG060216\  
 Data File : BG022154.D  
 Acq On : 2 Jun 2016 15:31  
 Operator : UM/SJ  
 Sample : H3302-08  
 Misc :  
 ALS Vial : 9 Sample Multiplier: 1

Instrument :  
 BNA\_G  
 ClientSampleId :  
 CB204

## Integration Parameters: LSCINT.P

Integrator: RTE  
 Smoothing : OFF  
 Sampling : 1  
 Start Thrs: 0.2  
 Stop Thrs : 0

Filtering: 5  
 Min Area: 0.1 % of largest Peak  
 Max Peaks: 100  
 Peak Location: TOP

If leading or trailing edge < 100 prefer < Baseline drop else tangent >  
 Peak separation: 5

Method : Z:\HPCHEM1\BNA G\METHODS\SOM02.2-EPA-BG052116.M  
 Title : SVOA CALIBRATION

72	23.237	3469	3472	3473	rBV3	4015	4243	0.39%	0.035%
73	23.272	3473	3478	3483	rVB5	14037	28637	2.63%	0.235%
74	23.625	3536	3538	3547	rVB8	8452	17216	1.58%	0.142%
75	24.095	3610	3618	3624	rVB4	38299	91516	8.41%	0.752%
76	24.177	3627	3632	3633	rBV4	7843	12624	1.16%	0.104%
77	24.312	3649	3655	3659	rBV9	7536	15112	1.39%	0.124%
78	24.865	3738	3749	3768	rVB2	277831	886660	81.48%	7.288%
79	25.094	3775	3788	3796	rBV2	261194	875701	80.47%	7.198%
80	25.311	3823	3825	3826	rBV2	3870	2911	0.27%	0.024%
81	25.758	3899	3901	3904	rVB4	3292	2406	0.22%	0.020%
82	26.075	3953	3955	3958	rBV4	2979	3368	0.31%	0.028%
83	26.134	3963	3965	3968	rVV4	4101	4747	0.44%	0.039%
84	26.216	3970	3979	3994	rVB5	31577	115692	10.63%	0.951%
85	26.774	4070	4074	4075	rBV4	3515	4980	0.46%	0.041%
86	26.862	4087	4089	4093	rBV5	3922	3887	0.36%	0.032%
87	27.209	4146	4148	4151	rBV4	3566	3480	0.32%	0.029%
88	27.309	4163	4165	4169	rVB4	3452	3415	0.31%	0.028%
89	27.926	4268	4270	4274	rVB5	2921	2753	0.25%	0.023%
90	28.366	4343	4345	4348	rVB4	4105	3888	0.36%	0.032%
91	28.396	4348	4350	4351	rBV2	2840	2197	0.20%	0.018%
92	28.819	4420	4422	4424	rBV3	3459	3674	0.34%	0.030%
93	29.066	4462	4464	4468	rBV4	2460	2349	0.22%	0.019%
94	29.771	4582	4584	4585	rBV2	5181	4939	0.45%	0.041%
95	29.806	4585	4590	4593	rVV7	8638	17863	1.64%	0.147%
96	30.423	4693	4695	4697	rBV3	2917	2161	0.20%	0.018%
97	30.887	4772	4774	4778	rBV4	2644	3481	0.32%	0.029%
98	31.016	4795	4796	4799	rVB3	4361	2229	0.20%	0.018%
99	31.110	4810	4812	4813	rBV2	3080	2266	0.21%	0.019%
100	31.651	4902	4904	4906	rBV3	3174	2413	0.22%	0.020%

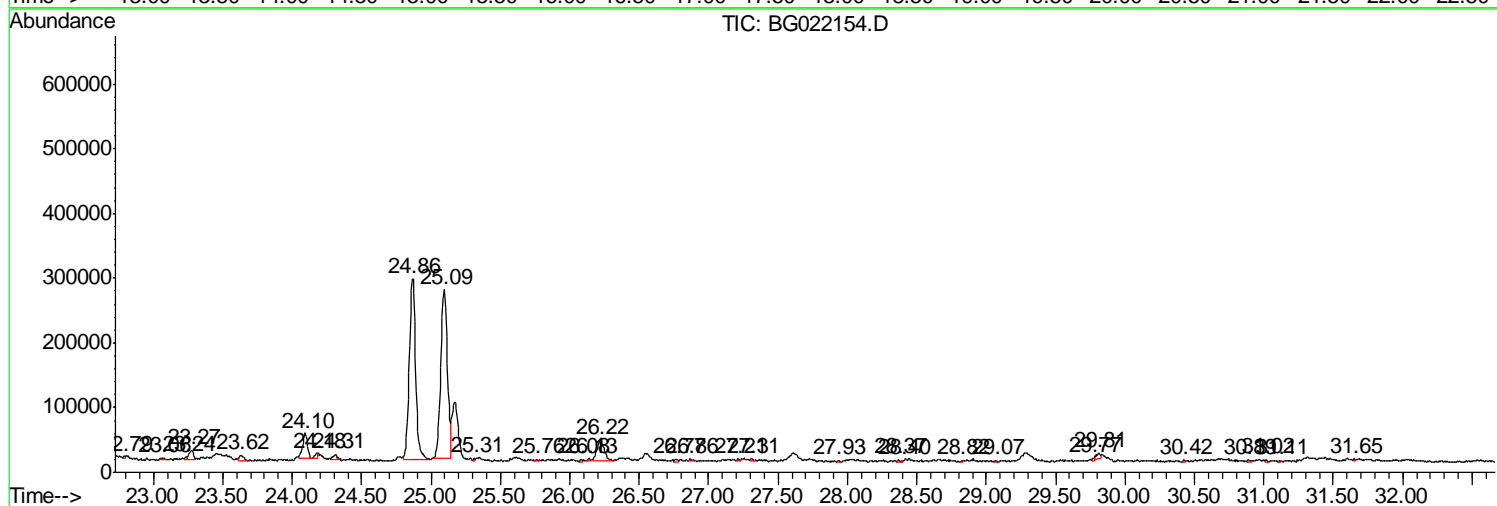
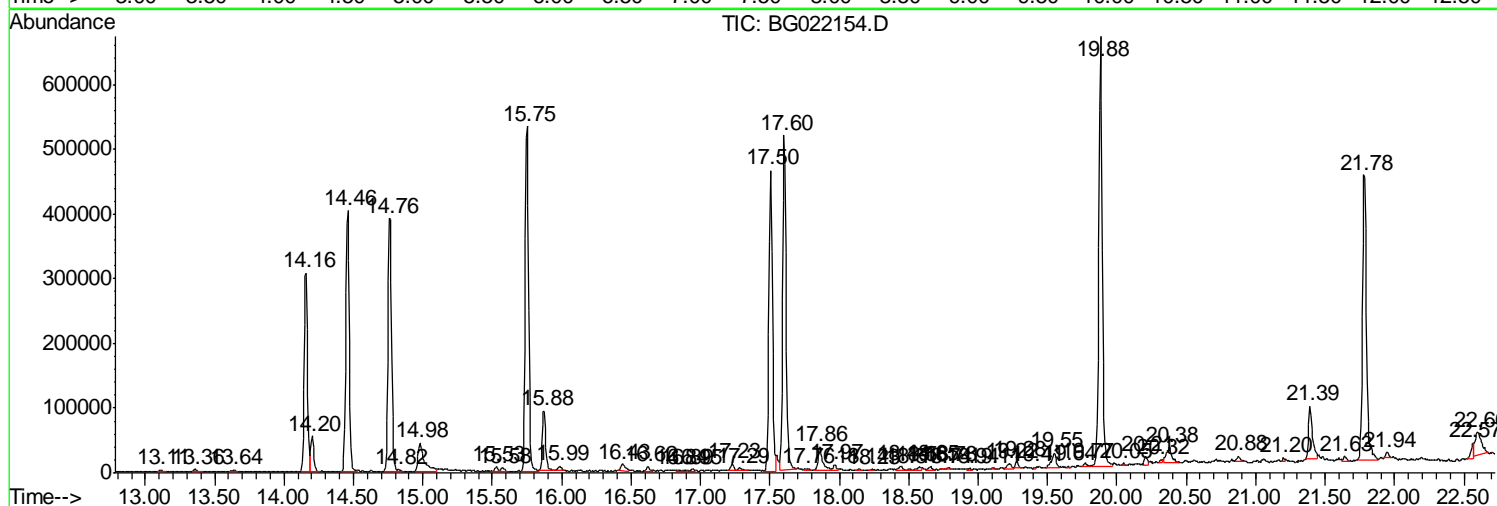
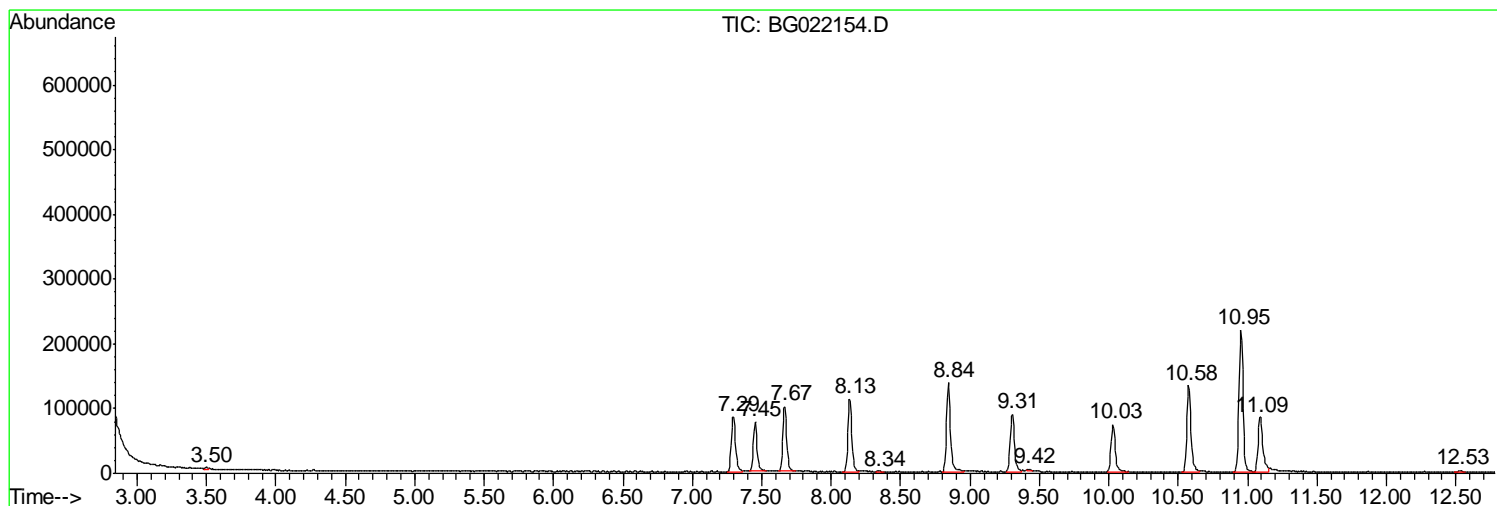
Sum of corrected areas: 12165661

Data Path : Z:\HPCHEM1\BNA G\DATA\BG060216\  
 Data File : BG022154.D  
 Acq On : 2 Jun 2016 15:31  
 Operator : UM/SJ  
 Sample : H3302-08  
 Misc :  
 ALS Vial : 9 Sample Multiplier: 1

Instrument :  
 BNA\_G  
 ClientSampleId :  
 CB204

Quant Method : Z:\HPCHEM1\BNA G\METHODS\SOM02.2-EPA-BG052116.M  
 Quant Title : SVOA CALIBRATION

TIC Library : C:\Database\NIST11.L  
 TIC Integration Parameters: LSCINT.P



Data Path : Z:\HPCHEM1\BNA G\DATA\BG060216\  
 Data File : BG022154.D  
 Acq On : 2 Jun 2016 15:31  
 Operator : UM/SJ  
 Sample : H3302-08  
 Misc :  
 ALS Vial : 9 Sample Multiplier: 1

Instrument :  
 BNA\_G  
 ClientSampled :  
 CB204

Quant Method : Z:\HPCHEM1\BNA G\METHODS\SOM02.2-EPA-BG052116.M  
 Quant Title : SVOA CALIBRATION

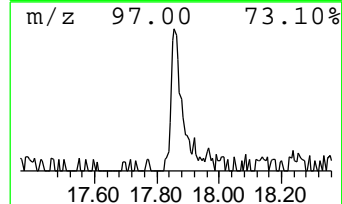
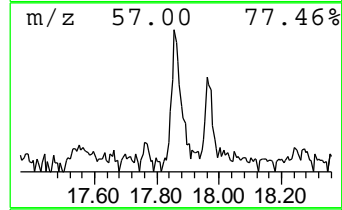
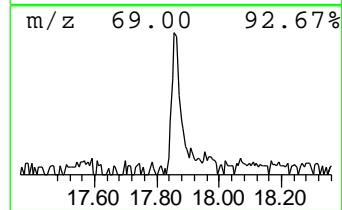
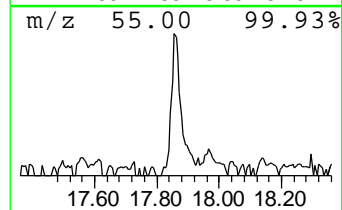
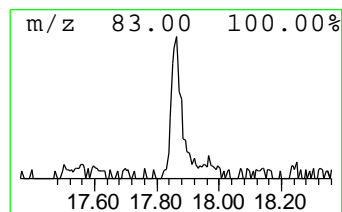
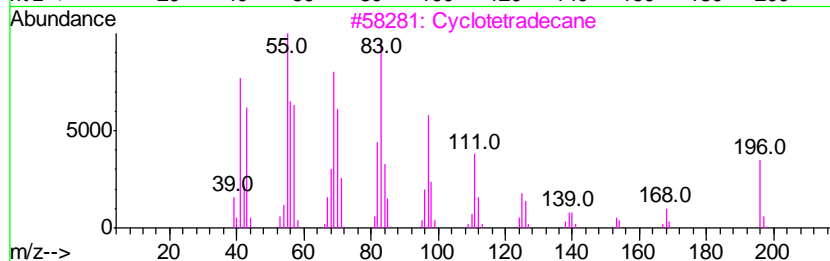
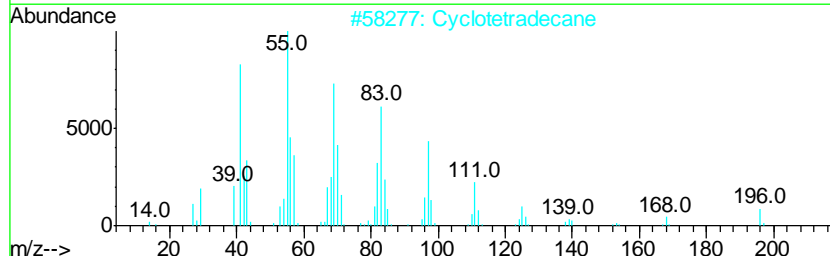
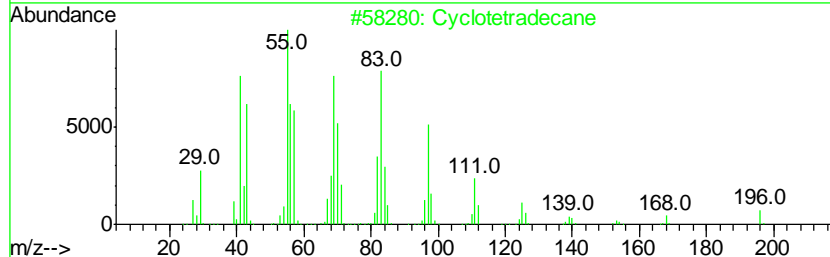
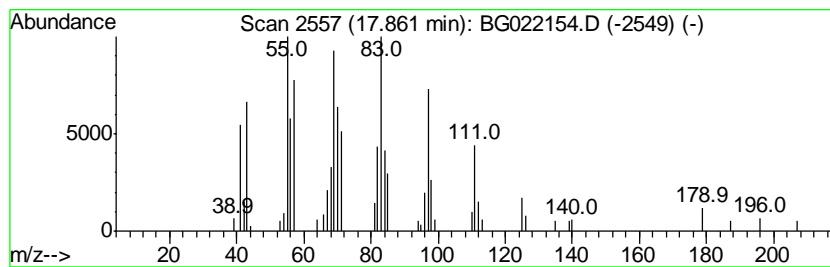
TIC Library : C:\Database\NIST11.L  
 TIC Integration Parameters: LSCINT.P

\*\*\*\*\*  
 Peak Number 1 (DEL) Alkane: Cyclic17.86 Concentration Rank 5

R.T.	EstConc	Area	Relative to ISTD	R.T.
17.86	2.04 ng/ul	82286	Phenanthrene-d10	17.50

Hit#	of	Tentative ID	MW	MolForm	CAS#	Qual
1	5	Cyclotetradecane	196	C14H28	000295-17-0	93
2		Cyclotetradecane	196	C14H28	000295-17-0	93
3		Cyclotetradecane	196	C14H28	000295-17-0	93
4		1-Hexadecanol	242	C16H34O	036653-82-4	91
5		n-Pentadecanol	228	C15H32O	000629-76-5	91



Data Path : Z:\HPCHEM1\BNA G\DATA\BG060216\  
 Data File : BG022154.D  
 Acq On : 2 Jun 2016 15:31  
 Operator : UM/SJ  
 Sample : H3302-08  
 Misc :  
 ALS Vial : 9 Sample Multiplier: 1

Instrument :  
 BNA\_G  
 ClientSampled :  
 CB204

Quant Method : Z:\HPCHEM1\BNA G\METHODS\SOM02.2-EPA-BG052116.M  
 Quant Title : SVOA CALIBRATION

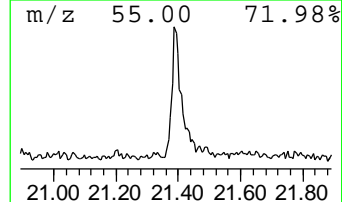
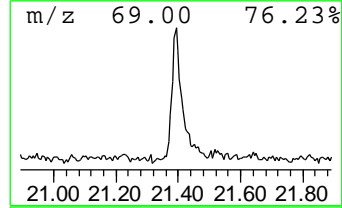
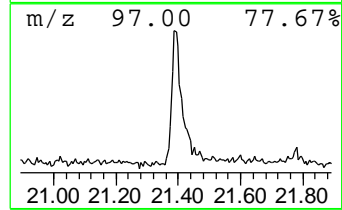
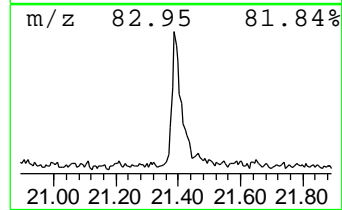
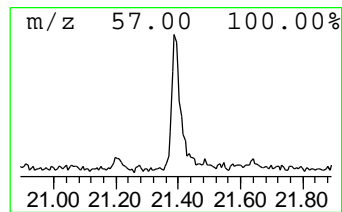
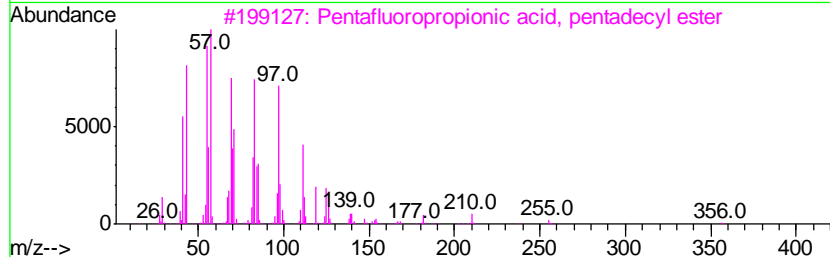
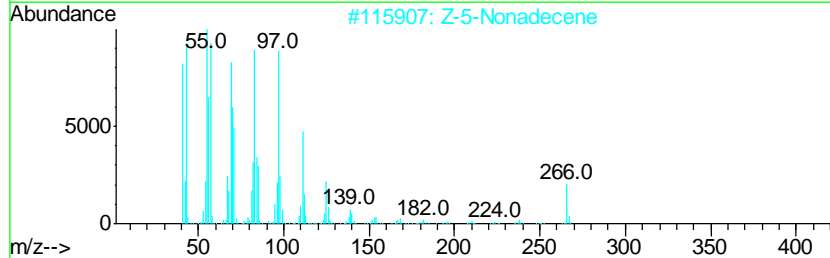
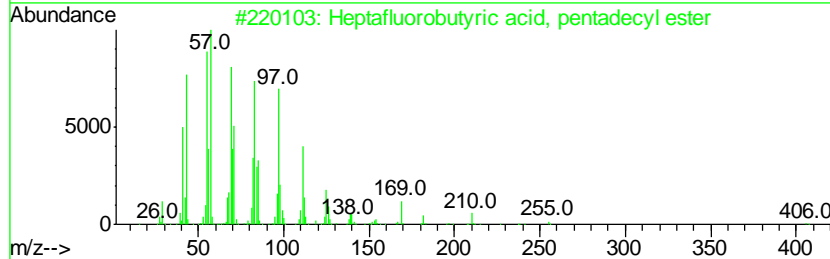
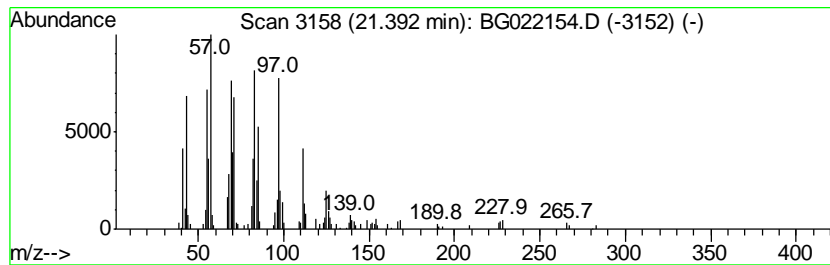
TIC Library : C:\Database\NIST11.L  
 TIC Integration Parameters: LSCINT.P

\*\*\*\*\*  
 Peak Number 2 Heptafluorobutyric acid, pe... Concentration Rank 1

R.T.	EstConc	Area	Relative to ISTD	R.T.
21.39	3.84 ng/ul	170635	Chrysene-d12	21.78

Hit#	of	Tentative ID	MW	MolForm	CAS#	Qual
1	5	Heptafluorobutyric acid, pentade...	424	C19H31F7O2	959261-23-5	95
2		Z-5-Nonadecene	266	C19H38	1000131-11-8	94
3		Pentafluoropropionic acid, penta...	374	C18H31F5O2	959092-08-1	94
4		Behenic alcohol	326	C22H46O	000661-19-8	93
5		Trifluoroacetic acid, pentadecyl...	324	C17H31F3O2	959010-23-2	93



Data Path : Z:\HPCHEM1\BNA G\DATA\BG060216\  
 Data File : BG022154.D  
 Acq On : 2 Jun 2016 15:31  
 Operator : UM/SJ  
 Sample : H3302-08  
 Misc :  
 ALS Vial : 9 Sample Multiplier: 1

Instrument :  
 BNA\_G  
 ClientSampled :  
 CB204

Quant Method : Z:\HPCHEM1\BNA G\METHODS\SOM02.2-EPA-BG052116.M  
 Quant Title : SVOA CALIBRATION

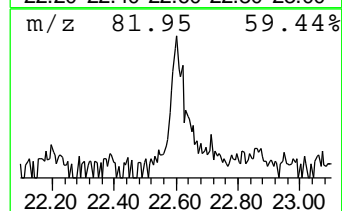
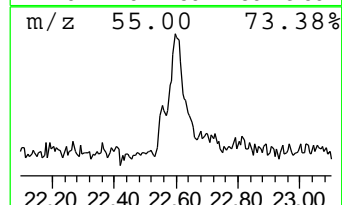
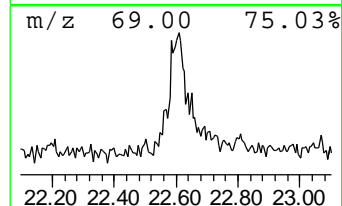
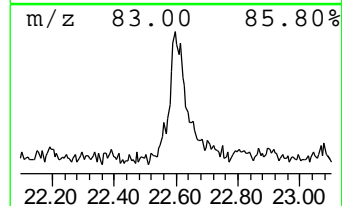
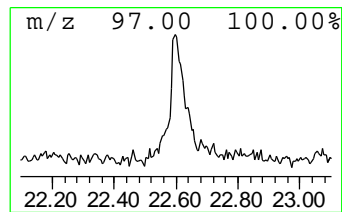
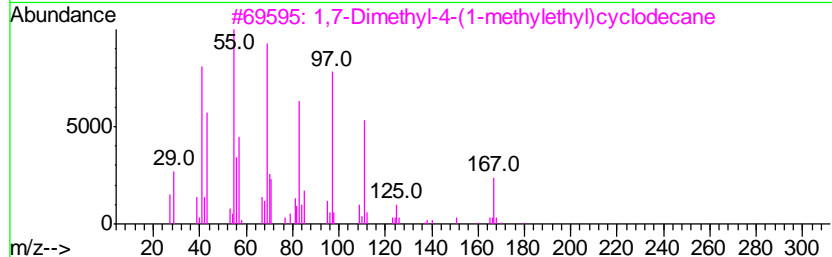
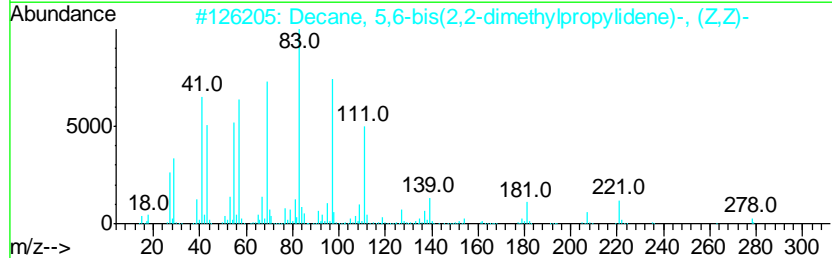
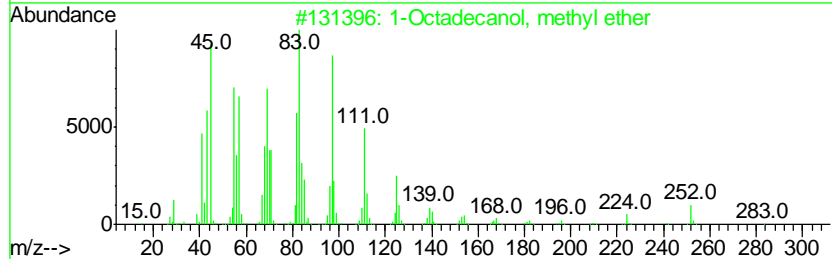
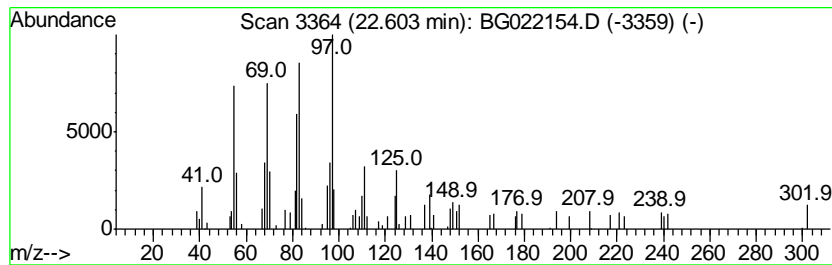
TIC Library : C:\Database\NIST11.L  
 TIC Integration Parameters: LSCINT.P

\*\*\*\*\*  
 Peak Number 3 1-Octadecanol, methyl ether Concentration Rank 3

R.T.	EstConc	Area	Relative to ISTD	R.T.
22.60	2.55 ng/ul	113189	Chrysene-d12	21.78

Hit#	of	Tentative ID	MW	MolForm	CAS#	Qual
1	5	1-Octadecanol, methyl ether	284	C19H40O	1000333-92-7	52
2		Decane, 5,6-bis(2,2-dimethylprop...	278	C20H38	073002-85-4	49
3		1,7-Dimethyl-4-(1-methylethyl)cy...	210	C15H30	000645-10-3	38
4		n-Nonadecanol-1	284	C19H40O	001454-84-8	38
5		Cyclohexane, 1,2,4,5-tetraethyl-...	196	C14H28	061142-24-3	38



Data Path : Z:\HPCHEM1\BNA G\DATA\BG060216\  
 Data File : BG022154.D  
 Acq On : 2 Jun 2016 15:31  
 Operator : UM/SJ  
 Sample : H3302-08  
 Misc :  
 ALS Vial : 9 Sample Multiplier: 1

Instrument :  
 BNA\_G  
 ClientSampleID :  
 CB204

Quant Method : Z:\HPCHEM1\BNA G\METHODS\SOM02.2-EPA-BG052116.M  
 Quant Title : SVOA CALIBRATION

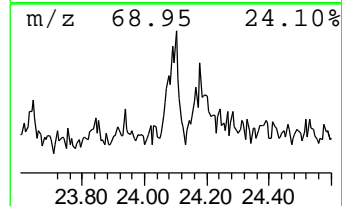
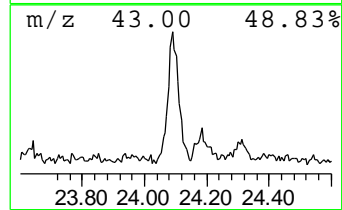
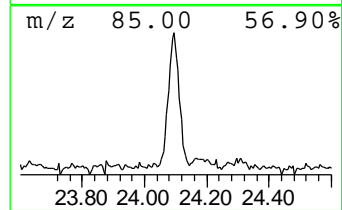
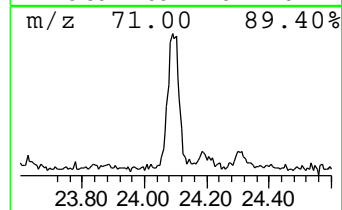
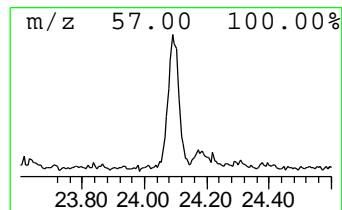
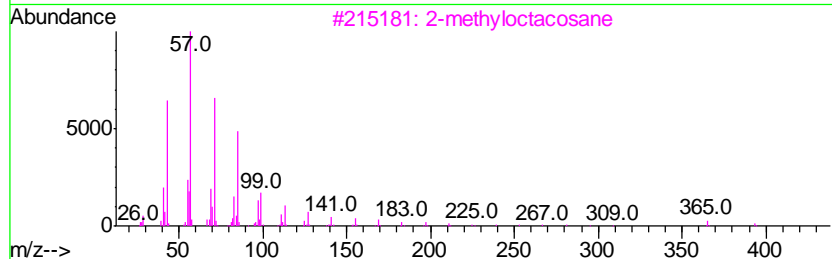
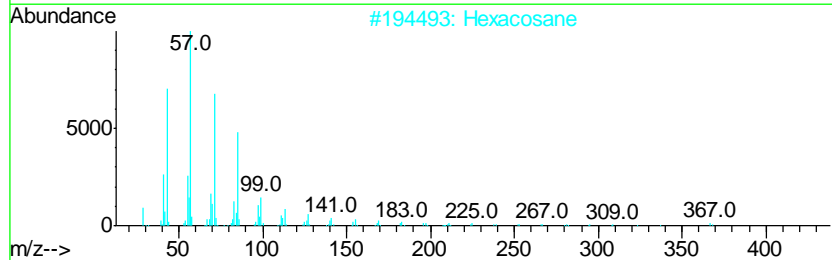
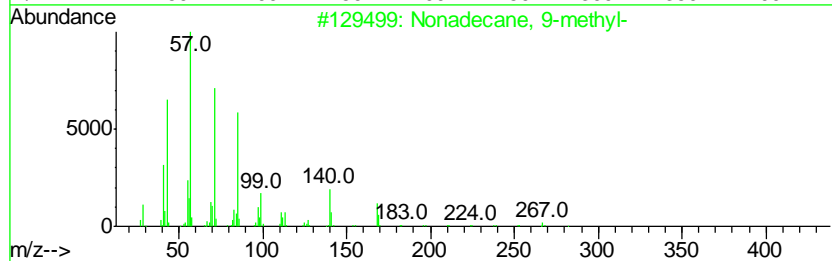
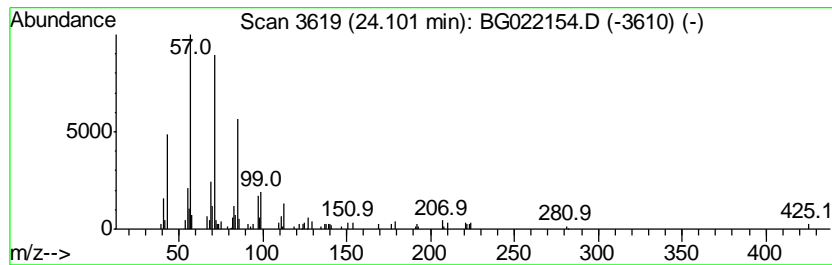
TIC Library : C:\Database\NIST11.L  
 TIC Integration Parameters: LSCINT.P

\*\*\*\*\*  
 Peak Number 4 (DEL) Alkane: Straight-Chai... Concentration Rank 4

R.T.	EstConc	Area	Relative to ISTD	R.T.
24.10	2.09 ng/ul	91516	Perylene-d12	25.09

Hit#	of	Tentative ID	MW	MolForm	CAS#	Qual
1	5	Nonadecane, 9-methyl-	282	C20H42	013287-24-6	90
2		Hexacosane	366	C26H54	000630-01-3	86
3		2-methyloctacosane	408	C29H60	1000376-72-8	86
4		Heptadecane	240	C17H36	000629-78-7	83
5		Heneicosane	296	C21H44	000629-94-7	83





Data Path : Z:\HPCHEM1\BNA G\DATA\BG060216\  
 Data File : BG022154.D  
 Acq On : 2 Jun 2016 15:31  
 Operator : UM/SJ  
 Sample : H3302-08  
 Misc :  
 ALS Vial : 9 Sample Multiplier: 1

Instrument :  
 BNA\_G  
 ClientSampled :  
 CB204

Quant Method : Z:\HPCHEM1\BNA G\METHODS\SOM02.2-EPA-BG052116.M  
 Quant Title : SVOA CALIBRATION

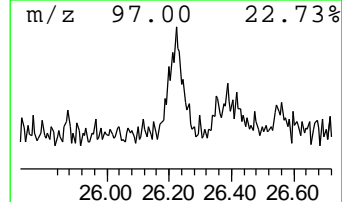
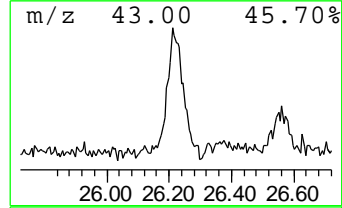
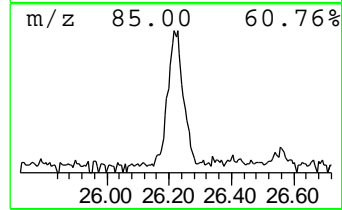
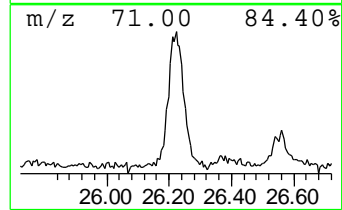
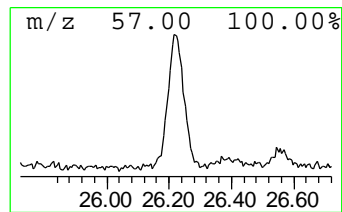
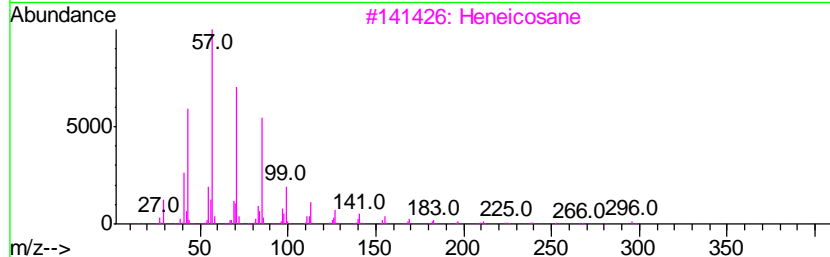
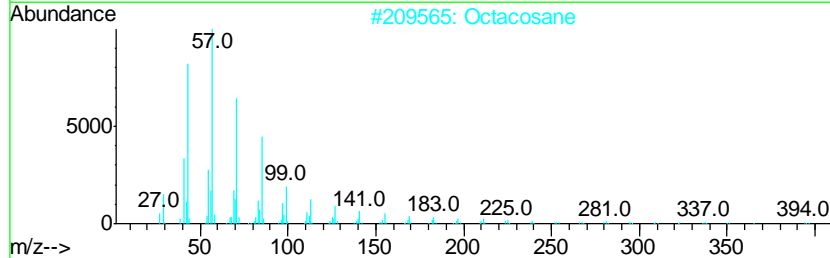
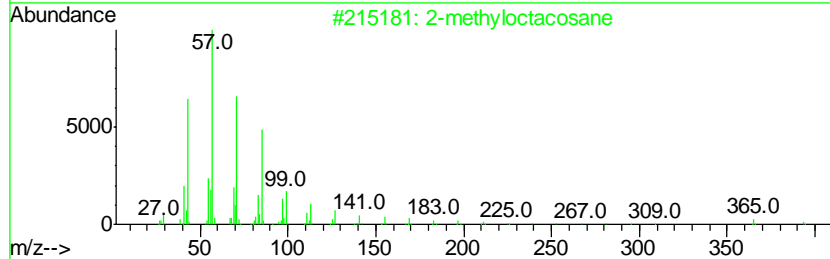
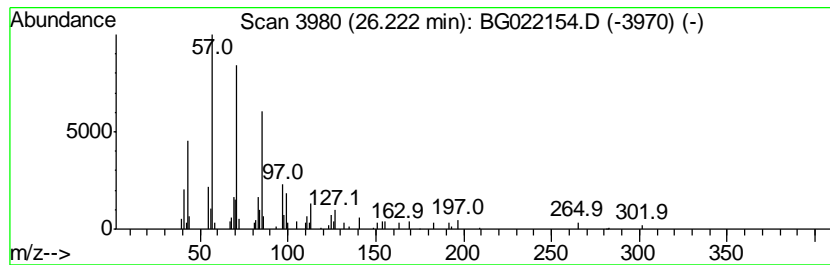
TIC Library : C:\Database\NIST11.L  
 TIC Integration Parameters: LSCINT.P

\*\*\*\*\*  
 Peak Number 5 (DEL) Alkane: Straight-Chai... Concentration Rank 2

R.T.	EstConc	Area	Relative to ISTD	R.T.
26.22	2.64 ng/ul	115692	Perylene-d12	25.09

Hit#	of	Tentative ID	MW	MolForm	CAS#	Qual
1	5	2-methyloctacosane	408	C29H60	1000376-72-8	80
2		Octacosane	394	C28H58	000630-02-4	80
3		Heneicosane	296	C21H44	000629-94-7	80
4		Octacosane	394	C28H58	000630-02-4	72
5		Heptadecane	240	C17H36	000629-78-7	72



Data Path : Z:\HPCHEM1\BNA\_G\DATA\BG060216\  
Data File : BG022154.D  
Acq On : 2 Jun 2016 15:31  
Operator : UM/SJ  
Sample : H3302-08  
Misc :  
ALS Vial : 9 Sample Multiplier: 1

Instrument :  
BNA\_G  
ClientSampleId :  
CB204

Quant Method : Z:\HPCHEM1\BNA\_G\METHODS\SOM02.2-EPA-BG052116.M  
Quant Title : SVOA CALIBRATION

TIC Library : C:\Database\NIST11.L  
TIC Integration Parameters: LSCINT.P

TIC Top Hit name	RT	EstConc	Units	Response	--Internal Standard--			
					#	RT	Resp	Conc
(DEL) Alkane: Cyc...	17.86	2.0	ng/ul	82286	4	17.50	806492	20.0
Heptafluorobutyri...	21.39	3.8	ng/ul	170635	5	21.78	889118	20.0
1-Octadecanol, me...	22.60	2.5	ng/ul	113189	5	21.78	889118	20.0
(DEL) Alkane: Str...	24.10	2.1	ng/ul	91516	6	25.09	875701	20.0
(DEL) Alkane: Str...	26.22	2.6	ng/ul	115692	6	25.09	875701	20.0