

Data Path : Z:\HPCHEM1\BNA_G\DATA\BG060315\
 Data File : BG017437.D
 Acq On : 4 Jun 2015 10:19
 Operator : TP/IZ
 Sample : G2443-04
 Misc :
 ALS Vial : 32 Sample Multiplier: 1

Instrument :
 BNA_G
 ClientSampleID :
 EB-04

Integration Parameters: rteint.p
 Integrator: RTE
 Smoothing : ON Filtering: 5
 Sampling : 1 Min Area: 3 % of largest Peak
 Start Thrs: 0.2 Max Peaks: 100
 Stop Thrs : 0 Peak Location: TOP

If leading or trailing edge < 100 prefer < Baseline drop else tangent >
 Peak separation: 5

Method : Z:\HPCHEM1\BNA_G\METHODS\8270-BG060315.M
 Title : ASP BNA STANDARDS FOR 5 POINT CALIBRATION

Signal : TIC

peak #	R.T. min	first scan	max scan	last scan	PK TY	peak height	corr. area	corr. % max.	% of total
1	2.777	10	15	28	rVB	187155	246723	13.65%	3.154%
2	5.215	424	430	437	rBV	149248	214897	11.89%	2.747%
3	6.825	698	704	715	rVB	92044	142810	7.90%	1.825%
4	7.166	755	762	769	rBV	286359	434784	24.05%	5.557%
5	7.624	834	840	848	rVB	78269	122133	6.76%	1.561%
6	7.942	885	894	901	rBV	249715	398335	22.03%	5.092%
7	8.788	1029	1038	1047	rBV	224916	356813	19.73%	4.561%
8	10.421	1308	1316	1329	rBV	102194	171617	9.49%	2.194%
9	12.906	1732	1739	1744	rBV	555138	800620	44.28%	10.234%
10	14.287	1968	1974	1984	rBV3	161888	251318	13.90%	3.212%
11	15.785	2223	2229	2238	rBV	586614	805250	44.54%	10.293%
12	17.043	2437	2443	2453	rVB	262033	361302	19.98%	4.618%
13	17.948	2593	2597	2602	rBV3	14663	23460	1.30%	0.300%
14	19.387	2837	2842	2851	rVB2	28470	36952	2.04%	0.472%
15	19.681	2886	2892	2897	rBV	1550537	1808031	100.00%	23.110%
16	20.374	3001	3010	3016	rBV	221883	432171	23.90%	5.524%
17	20.421	3016	3018	3025	rVV	114400	155746	8.61%	1.991%
18	20.480	3025	3028	3039	rVB	29059	45857	2.54%	0.586%
19	21.232	3151	3156	3163	rBV	409763	496272	27.45%	6.343%
20	21.338	3169	3174	3176	rBV3	31997	41047	2.27%	0.525%
21	23.471	3529	3537	3545	rBV2	252596	477334	26.40%	6.101%

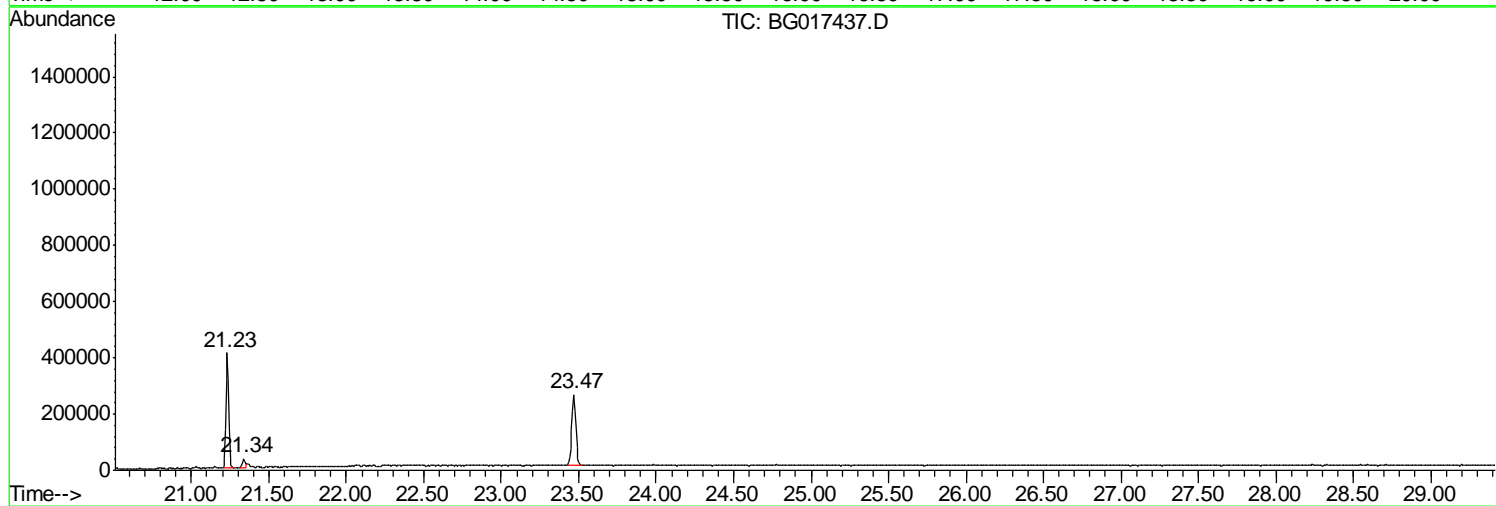
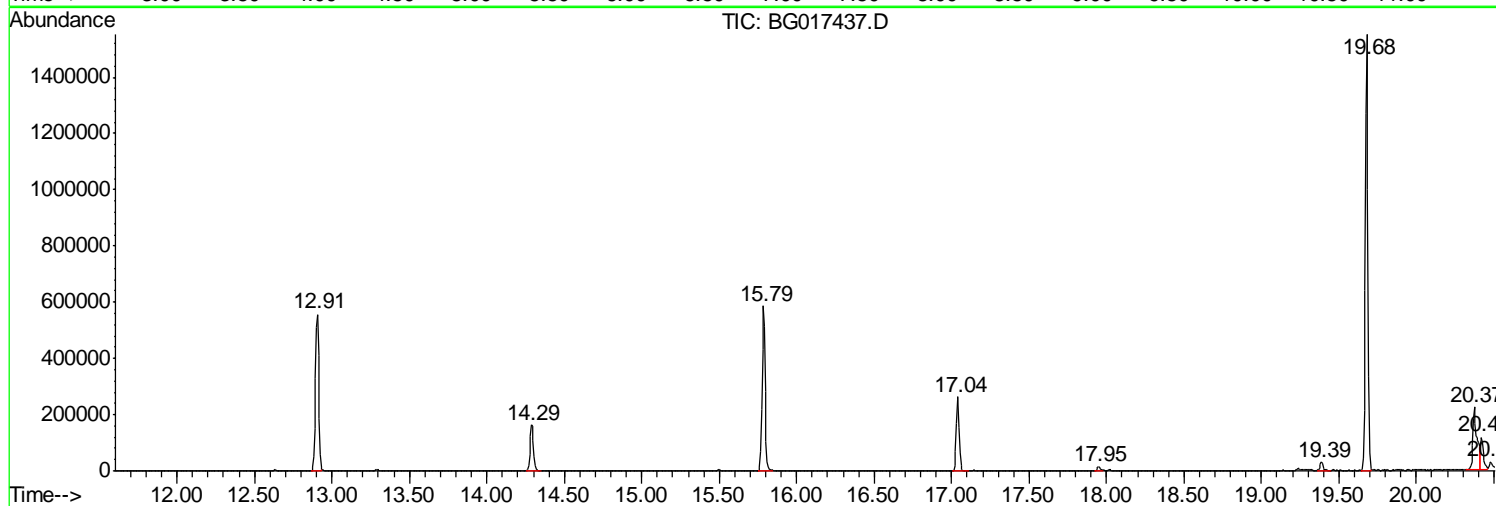
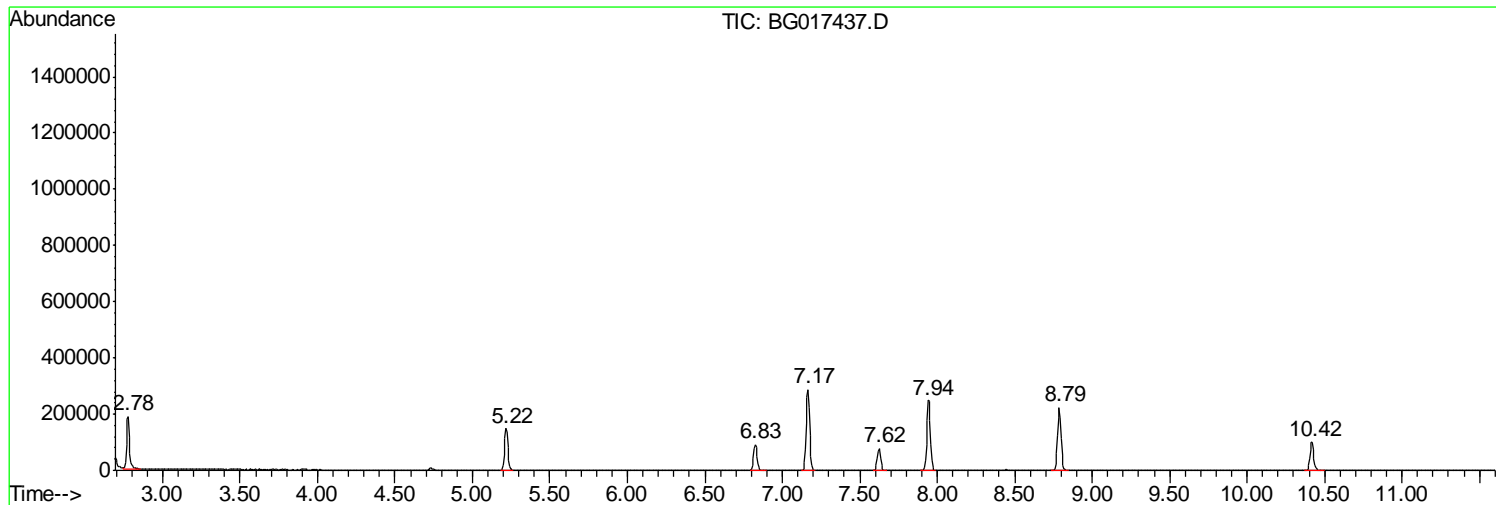
Sum of corrected areas: 7823472

Data Path : Z:\HPCHEM1\BNA_G\DATA\BG060315\
Data File : BG017437.D
Acq On : 4 Jun 2015 10:19
Operator : TP/IZ
Sample : G2443-04
Misc :
ALS Vial : 32 Sample Multiplier: 1

Instrument :
BNA_G
ClientSampled :
EB-04

Quant Method : Z:\HPCHEM1\BNA_G\METHODS\8270-BG060315.M
Quant Title : ASP BNA STANDARDS FOR 5 POINT CALIBRATION

TIC Library : C:\DATABASE\NIST02.L
TIC Integration Parameters: LSCINT.P



Data Path : Z:\HPCHEM1\BNA_G\DATA\BG060315\
 Data File : BG017437.D
 Acq On : 4 Jun 2015 10:19
 Operator : TP/IZ
 Sample : G2443-04
 Misc :
 ALS Vial : 32 Sample Multiplier: 1

Instrument :
 BNA_G
 ClientSampled :
 EB-04

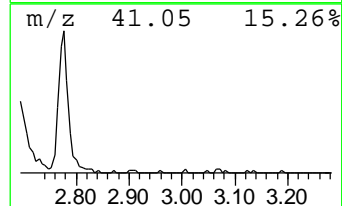
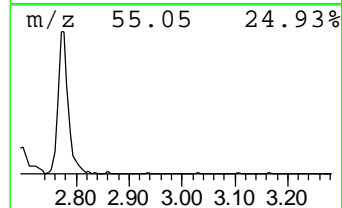
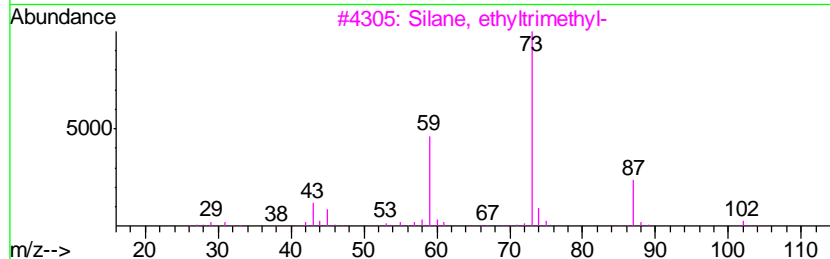
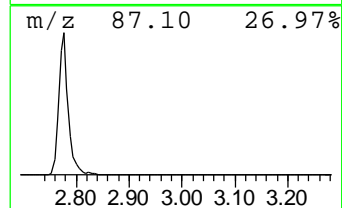
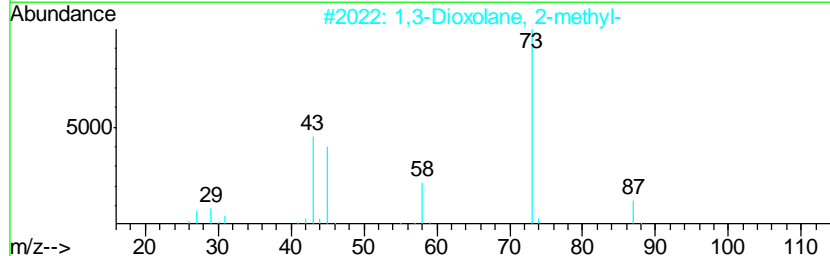
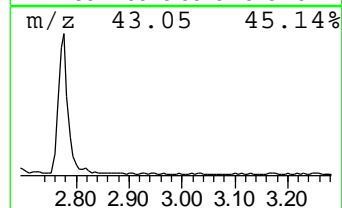
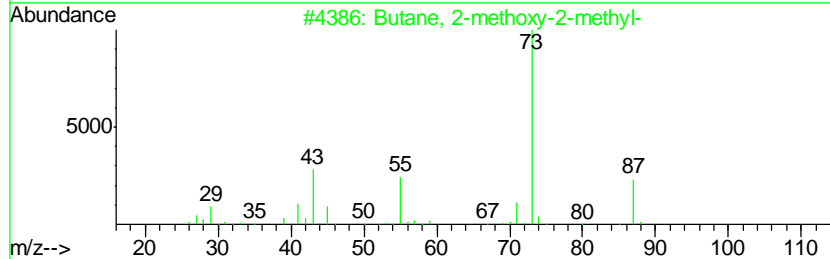
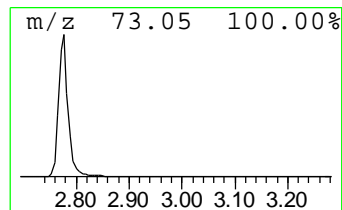
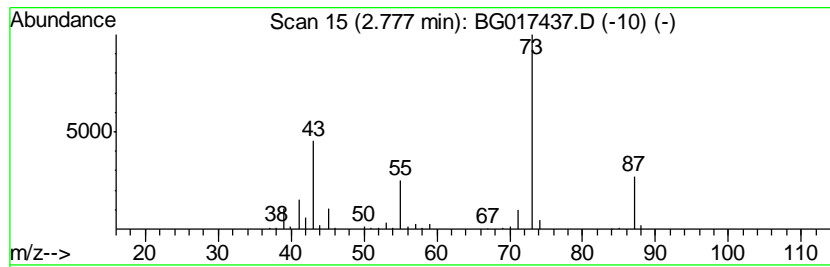
Quant Method : Z:\HPCHEM1\BNA_G\METHODS\8270-BG060315.M
 Quant Title : ASP BNA STANDARDS FOR 5 POINT CALIBRATION

TIC Library : C:\DATABASE\NIST02.L
 TIC Integration Parameters: LSCINT.P

 Peak Number 1 Butane, 2-methoxy-2-methyl- Concentration Rank 3

R.T.	EstConc	Area	Relative to ISTD	R.T.
2.78	40.40 ng	246723	1,4-Dichlorobenzene-d4	7.62

Hit#	of	Tentative ID	MW	MolForm	CAS#	Qual
1	5	Butane, 2-methoxy-2-methyl-	102	C6H14O	000994-05-8	78
2		1,3-Dioxolane, 2-methyl-	88	C4H8O2	000497-26-7	47
3		Silane, ethyltrimethyl-	102	C5H14Si	003439-38-1	33
4		1,4-Butanediamine	88	C4H12N2	000110-60-1	10
5		Acetamide, N-ethyl-	87	C4H9NO	000625-50-3	9



Data Path : Z:\HPCHEM1\BNA_G\DATA\BG060315\
 Data File : BG017437.D
 Acq On : 4 Jun 2015 10:19
 Operator : TP/IZ
 Sample : G2443-04
 Misc :
 ALS Vial : 32 Sample Multiplier: 1

Instrument :
 BNA_G
 ClientSampled :
 EB-04

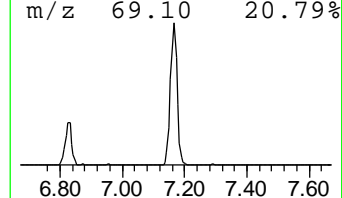
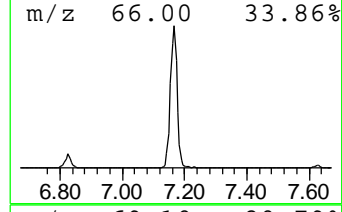
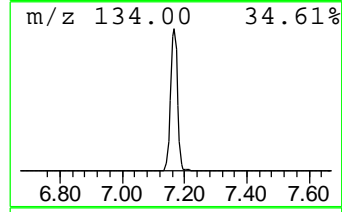
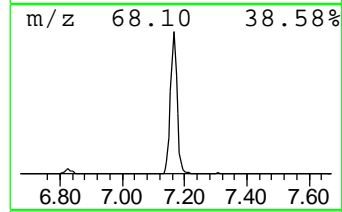
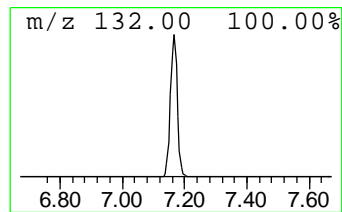
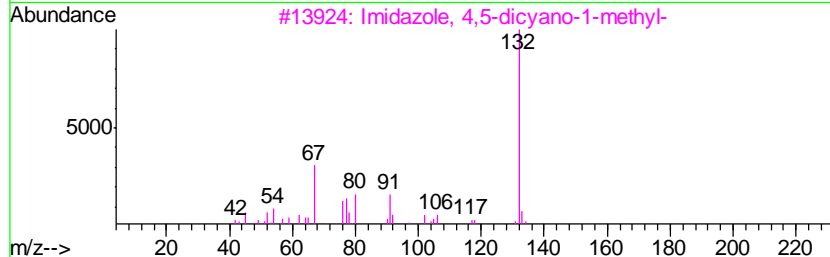
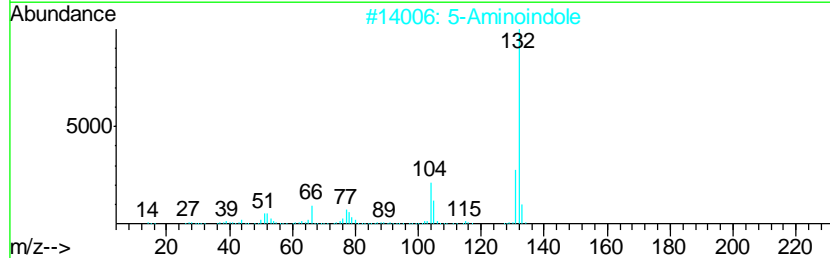
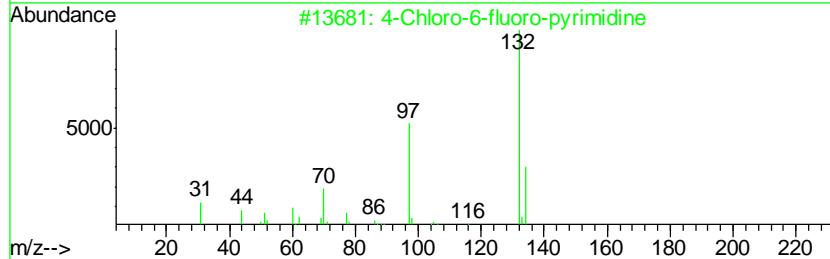
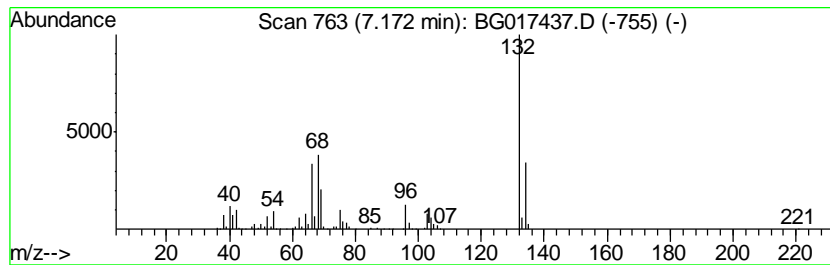
Quant Method : Z:\HPCHEM1\BNA_G\METHODS\8270-BG060315.M
 Quant Title : ASP BNA STANDARDS FOR 5 POINT CALIBRATION

TIC Library : C:\DATABASE\NIST02.L
 TIC Integration Parameters: LSCINT.P

 Peak Number 2 unknown7.17 Concentration Rank 1

R.T.	EstConc	Area	Relative to ISTD	R.T.
7.17	71.20 ng	434784	1,4-Dichlorobenzene-d4	7.62

Hit#	of	Tentative ID	MW	MolForm	CAS#	Qual
1	5	4-Chloro-6-fluoro-pyrimidine	132	C4H2ClFN2	051422-01-6	27
2		5-Aminoindole	132	C8H8N2	005192-03-0	22
3		Imidazole, 4,5-dicyano-1-methyl-	132	C6H4N4	019485-35-9	22
4		Tranylcypromine-propionyl	189	C12H15NO	1000123-86-3	22
5		1H-Benzimidazole, 2-methyl-	132	C8H8N2	000615-15-6	22



Data Path : Z:\HPCHEM1\BNA_G\DATA\BG060315\
 Data File : BG017437.D
 Acq On : 4 Jun 2015 10:19
 Operator : TP/IZ
 Sample : G2443-04
 Misc :
 ALS Vial : 32 Sample Multiplier: 1

Instrument :
 BNA_G
 ClientSampleID :
 EB-04

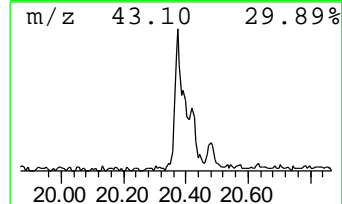
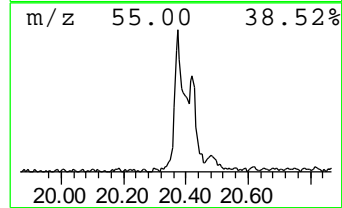
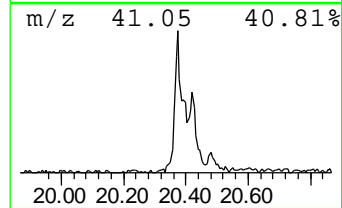
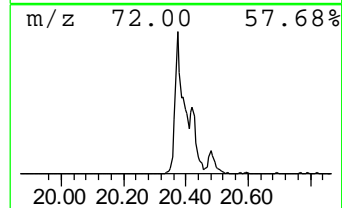
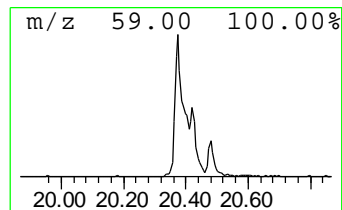
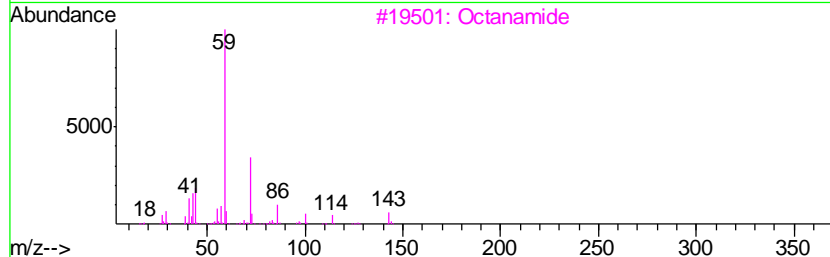
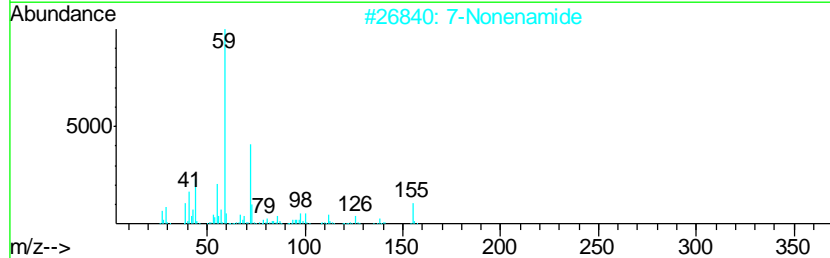
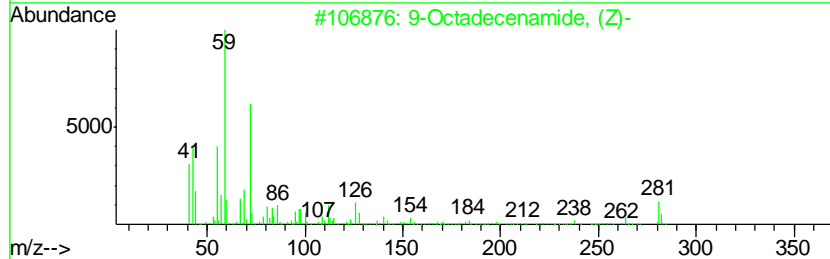
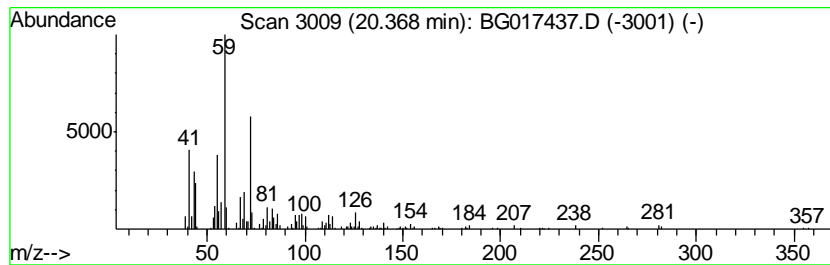
Quant Method : Z:\HPCHEM1\BNA_G\METHODS\8270-BG060315.M
 Quant Title : ASP BNA STANDARDS FOR 5 POINT CALIBRATION

TIC Library : C:\DATABASE\NIST02.L
 TIC Integration Parameters: LSCINT.P

 Peak Number 4 9-Octadecenamide, (Z)- Concentration Rank 4

R.T.	EstConc	Area	Relative to ISTD	R.T.
20.37	17.42 ng	432171	Chrysene-d12	21.23

Hit#	of	Tentative ID	MW	MolForm	CAS#	Qual
1	5	9-Octadecenamide, (Z)-	281	C18H35NO	000301-02-0	95
2		7-Nonenamide	155	C9H17NO	090949-53-4	78
3		Octanamide	143	C8H17NO	000629-01-6	59
4		Heptanamide, 4-ethyl-5-methyl-	171	C10H21NO	054789-40-1	59
5		Butanamide, 3-methyl-	101	C5H11NO	000541-46-8	46



Data Path : Z:\HPCHEM1\BNA_G\DATA\BG060315\
Data File : BG017437.D
Acq On : 4 Jun 2015 10:19
Operator : TP/IZ
Sample : G2443-04
Misc :
ALS Vial : 32 Sample Multiplier: 1

Instrument :
BNA_G
ClientSampleId :
EB-04

Quant Method : Z:\HPCHEM1\BNA_G\METHODS\8270-BG060315.M
Quant Title : ASP BNA STANDARDS FOR 5 POINT CALIBRATION

TIC Library : C:\DATABASE\NIST02.L
TIC Integration Parameters: LSCINT.P

TIC Top Hit name	RT	EstConc	Units	Response	--Internal Standard--			
					#	RT	Resp	Conc
Butane, 2-methoxy...	2.78	40.4	ng	246723	1	7.62	122133	20.0
unknown7.17	7.17	71.2	ng	434784	1	7.62	122133	20.0
9-Octadecenamide,...	20.37	17.4	ng	432171	5	21.23	496272	20.0