

Data Path : Z:\svoasrv\HPCHEM1\BNA_G\Data\BG060324\
 Data File : BG061431.D
 Acq On : 3 Jun 2024 20:15
 Operator : MA/JU
 Sample : P2589-08
 Misc :
 ALS Vial : 14 Sample Multiplier: 1

Instrument :
 BNA_G
 ClientSampleId :
 BH5W7

Integration Parameters: LSCINT.P

Integrator: RTE
 Smoothing : OFF Filtering: 5
 Sampling : 1 Min Area: 0.1 % of largest Peak
 Start Thrs: 0.2 Max Peaks: 100
 Stop Thrs : 0 Peak Location: TOP

If leading or trailing edge < 100 prefer < Baseline drop else tangent >
 Peak separation: 5

Method : Z:\svoasrv\HPCHEM1\BNA_G\Methods\SFAM-EPA-BG052124.MA.M
 Title : SVOA CALIBRATION

Signal : TIC: BG061431.D\data.ms

peak #	R.T. min	first scan	max scan	last scan	PK TY	peak height	corr. area	corr. % max.	% of total
1	3.077	10	15	21	rVB	46276	74349	7.01%	0.663%
2	3.159	27	29	32	rVB3	1852	1679	0.16%	0.015%
3	3.335	56	59	63	rVV3	3180	3435	0.32%	0.031%
4	3.746	124	129	137	rVV	38266	65444	6.17%	0.584%
5	3.852	145	147	152	rVV3	1829	2531	0.24%	0.023%
6	4.081	180	186	190	rVV3	2364	3021	0.28%	0.027%
7	7.060	687	693	702	rBV2	57932	101704	9.58%	0.907%
8	7.201	712	717	724	rBV	37247	59379	5.60%	0.530%
9	7.413	747	753	760	rBV	49328	82130	7.74%	0.732%
10	7.871	823	831	838	rBV	130424	216113	20.36%	1.927%
11	8.594	948	954	965	rVB2	78309	136896	12.90%	1.221%
12	9.028	1021	1028	1039	rVB	60907	106116	10.00%	0.946%
13	9.751	1145	1151	1159	rVV2	54990	97577	9.19%	0.870%
14	10.303	1239	1245	1255	rBV2	75189	133615	12.59%	1.192%
15	10.668	1299	1307	1315	rBV	164008	273927	25.81%	2.443%
16	10.803	1324	1330	1338	rBV	62090	116695	11.00%	1.041%
17	13.400	1768	1772	1778	rBV3	1241	2098	0.20%	0.019%
18	13.917	1854	1860	1865	rVV	179179	249924	23.55%	2.229%
19	14.205	1901	1909	1915	rBV	172139	274382	25.85%	2.447%
20	14.510	1954	1961	1968	rBV	306900	460432	43.38%	4.106%
21	14.575	1968	1972	1975	rVB2	1775	2510	0.24%	0.022%
22	14.757	1997	2003	2014	rBV2	64150	130310	12.28%	1.162%
23	14.998	2043	2044	2051	rVB2	1330	1765	0.17%	0.016%
24	15.503	2124	2130	2137	rVV	267961	401449	37.83%	3.580%
25	15.556	2137	2139	2146	rVB3	3261	4544	0.43%	0.041%
26	15.644	2149	2154	2165	rVV	84750	138374	13.04%	1.234%
27	15.856	2185	2190	2195	rBV	2217	3551	0.33%	0.032%
28	15.991	2211	2213	2215	rBV	1568	1737	0.16%	0.015%
29	16.243	2250	2256	2257	rBV3	2249	3285	0.31%	0.029%
30	16.620	2317	2320	2324	rVB2	1612	1860	0.18%	0.017%
31	16.708	2332	2335	2337	rBV2	2028	2119	0.20%	0.019%
32	16.790	2346	2349	2354	rBV5	2095	2957	0.28%	0.026%
33	16.837	2354	2357	2360	rVB2	1829	1909	0.18%	0.017%
34	16.919	2368	2371	2377	rVB5	5815	7826	0.74%	0.070%
35	17.007	2383	2386	2391	rVB3	2368	3900	0.37%	0.035%
36	17.078	2395	2398	2403	rVB4	5360	7932	0.75%	0.071%

Data Path : Z:\svoasrv\HPCHEM1\BNA_G\Data\BG060324\
 Data File : BG061431.D
 Acq On : 3 Jun 2024 20:15
 Operator : MA/JU
 Sample : P2589-08
 Misc :
 ALS Vial : 14 Sample Multiplier: 1

Instrument :
 BNA_G
 ClientSampleId :
 BH5W7

Integration Parameters: LSCINT.P

Integrator: RTE
 Smoothing : OFF
 Sampling : 1
 Start Thrs: 0.2
 Stop Thrs : 0

Filtering: 5
 Min Area: 0.1 % of largest Peak
 Max Peaks: 100
 Peak Location: TOP

If leading or trailing edge < 100 prefer < Baseline drop else tangent >
 Peak separation: 5

Method : Z:\svoasrv\HPCHEM1\BNA_G\Methods\SFAM-EPA-BG052124.MA.M
 Title : SVOA CALIBRATION

37	17.178	2411	2415	2417	rBV3	1792	2018	0.19%	0.018%
38	17.260	2420	2429	2433	rBV	408635	612293	57.69%	5.461%
39	17.301	2433	2436	2441	rVB	117011	151465	14.27%	1.351%
40	17.360	2441	2446	2451	rBV	383617	548980	51.73%	4.896%
41	17.448	2459	2461	2463	rBV2	4278	5416	0.51%	0.048%
42	17.583	2480	2484	2487	rVB5	2145	2919	0.28%	0.026%
43	17.665	2491	2498	2503	rVV2	14143	22454	2.12%	0.200%
44	17.777	2514	2517	2521	rVB2	2620	3370	0.32%	0.030%
45	17.842	2524	2528	2531	rBV5	5310	7546	0.71%	0.067%
46	17.924	2538	2542	2543	rBV2	2388	2160	0.20%	0.019%
47	17.983	2548	2552	2556	rBV5	3295	5722	0.54%	0.051%
48	18.047	2560	2563	2564	rBV3	1874	1617	0.15%	0.014%
49	18.065	2564	2566	2568	rVB3	2641	2108	0.20%	0.019%
50	18.135	2573	2578	2581	rBV	22354	37867	3.57%	0.338%
51	18.188	2581	2587	2591	rVV3	37964	72834	6.86%	0.650%
52	18.218	2591	2592	2596	rVV2	3256	3706	0.35%	0.033%
53	18.271	2596	2601	2606	rVV4	7711	11718	1.10%	0.105%
54	18.329	2606	2611	2615	rVV4	33253	59128	5.57%	0.527%
55	18.370	2615	2618	2624	rVB2	19870	26734	2.52%	0.238%
56	18.447	2626	2631	2635	rBV5	4121	6540	0.62%	0.058%
57	18.488	2635	2638	2641	rBV5	4031	5483	0.52%	0.049%
58	18.535	2643	2646	2648	rVV4	3339	3525	0.33%	0.031%
59	18.641	2659	2664	2667	rBV	18234	25754	2.43%	0.230%
60	18.688	2667	2672	2676	rVB3	18548	26869	2.53%	0.240%
61	18.717	2676	2677	2681	rVB4	2964	2358	0.22%	0.021%
62	18.764	2682	2685	2687	rBV4	3065	2835	0.27%	0.025%
63	18.799	2690	2691	2693	rBV2	1925	1804	0.17%	0.016%
64	18.852	2697	2700	2703	rBV4	3508	4593	0.43%	0.041%
65	18.882	2703	2705	2708	rBV3	5880	7678	0.72%	0.068%
66	18.940	2710	2715	2718	rBV4	5331	7859	0.74%	0.070%
67	18.976	2718	2721	2725	rVB5	6344	8299	0.78%	0.074%
68	19.058	2728	2735	2740	rBV2	21837	41344	3.90%	0.369%
69	19.117	2742	2745	2748	rVB5	6461	7156	0.67%	0.064%
70	19.146	2748	2750	2754	rVB4	7332	6764	0.64%	0.060%
71	19.205	2754	2760	2766	rBV5	17975	38974	3.67%	0.348%
72	19.263	2768	2770	2771	rVB2	2864	1888	0.18%	0.017%
73	19.316	2773	2779	2786	rVB	319402	458324	43.19%	4.087%
74	19.381	2786	2790	2793	rBV5	10403	15370	1.45%	0.137%
75	19.416	2793	2796	2800	rBV5	7480	10146	0.96%	0.090%
76	19.463	2802	2804	2808	rVB5	5915	5649	0.53%	0.050%

Data Path : Z:\svoasrv\HPCHEM1\BNA_G\Data\BG060324\
 Data File : BG061431.D
 Acq On : 3 Jun 2024 20:15
 Operator : MA/JU
 Sample : P2589-08
 Misc :
 ALS Vial : 14 Sample Multiplier: 1

Instrument :
 BNA_G
 ClientSampleId :
 BH5W7

Integration Parameters: LSCINT.P

Integrator: RTE
 Smoothing : OFF Filtering: 5
 Sampling : 1 Min Area: 0.1 % of largest Peak
 Start Thrs: 0.2 Max Peaks: 100
 Stop Thrs : 0 Peak Location: TOP

If leading or trailing edge < 100 prefer < Baseline drop else tangent >
 Peak separation: 5

Method : Z:\svoasrv\HPCHEM1\BNA_G\Methods\SFAM-EPA-BG052124.MA.M
 Title : SVOA CALIBRATION

77	19.522	2810	2814	2816	rBV5	9151	11305	1.07%	0.101%
78	19.557	2818	2820	2824	rBV	8693	11723	1.10%	0.105%
79	19.651	2830	2836	2840	rBV	586005	965500	90.97%	8.611%
80	19.681	2840	2841	2849	rVV	294615	298518	28.13%	2.662%
81	19.751	2850	2853	2859	rVB3	21597	31410	2.96%	0.280%
82	19.863	2868	2872	2877	rVB	20289	32055	3.02%	0.286%
83	19.922	2877	2882	2887	rBV3	18395	34184	3.22%	0.305%
84	20.010	2891	2897	2898	rBV5	26188	45493	4.29%	0.406%
85	20.145	2914	2920	2921	rBV5	21552	37581	3.54%	0.335%
86	20.180	2922	2926	2932	rVB	50480	77440	7.30%	0.691%
87	20.274	2939	2942	2947	rBV	31978	45030	4.24%	0.402%
88	20.333	2947	2952	2957	rVV3	33366	60333	5.68%	0.538%
89	20.474	2972	2976	2980	rBV	32710	47376	4.46%	0.423%
90	20.521	2980	2984	2987	rBV3	29573	39139	3.69%	0.349%
91	20.932	3051	3054	3060	rVB	39056	52943	4.99%	0.472%
92	21.144	3088	3090	3093	rBV2	21404	27360	2.58%	0.244%
93	21.191	3094	3098	3105	rVB3	35533	82477	7.77%	0.736%
94	21.514	3145	3153	3158	rBV3	516205	1061285	100.00%	9.465%
95	21.561	3158	3161	3171	rVB	174317	266205	25.08%	2.374%
96	23.629	3506	3513	3520	rBV	129719	391461	36.89%	3.491%
97	24.316	3624	3630	3635	rBV	67602	166587	15.70%	1.486%
98	24.393	3636	3643	3650	rVV2	343062	902578	85.05%	8.049%
99	24.463	3651	3655	3664	rVB2	111317	248070	23.37%	2.212%
100	24.604	3670	3679	3688	rBV	302067	830173	78.22%	7.404%

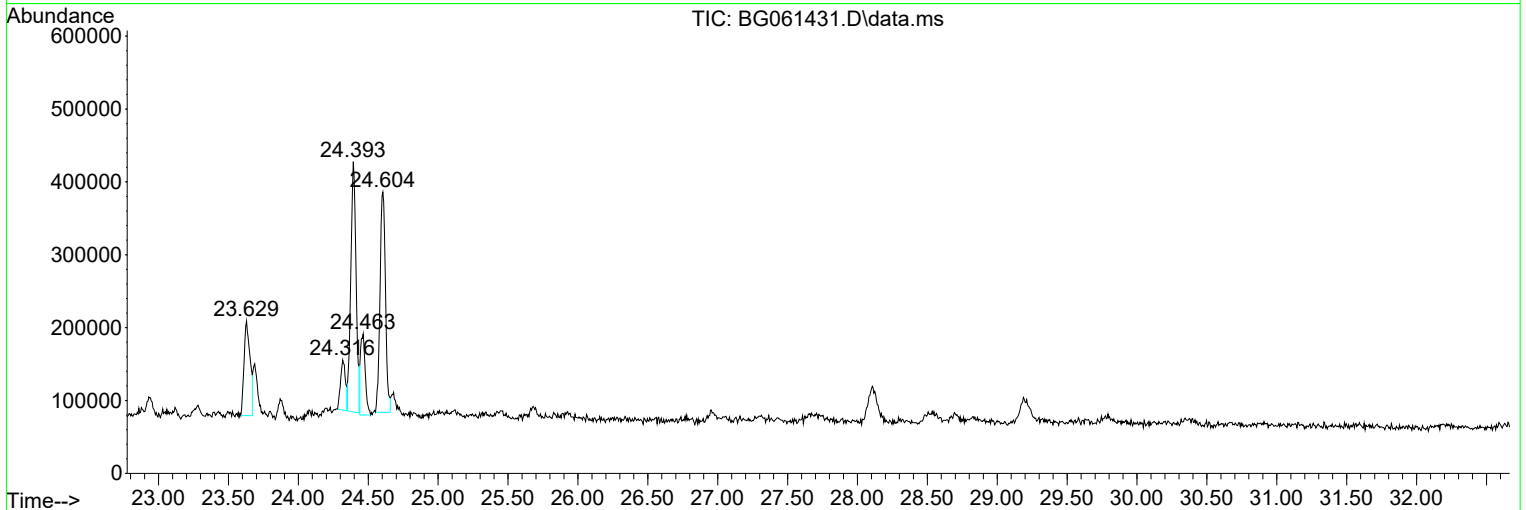
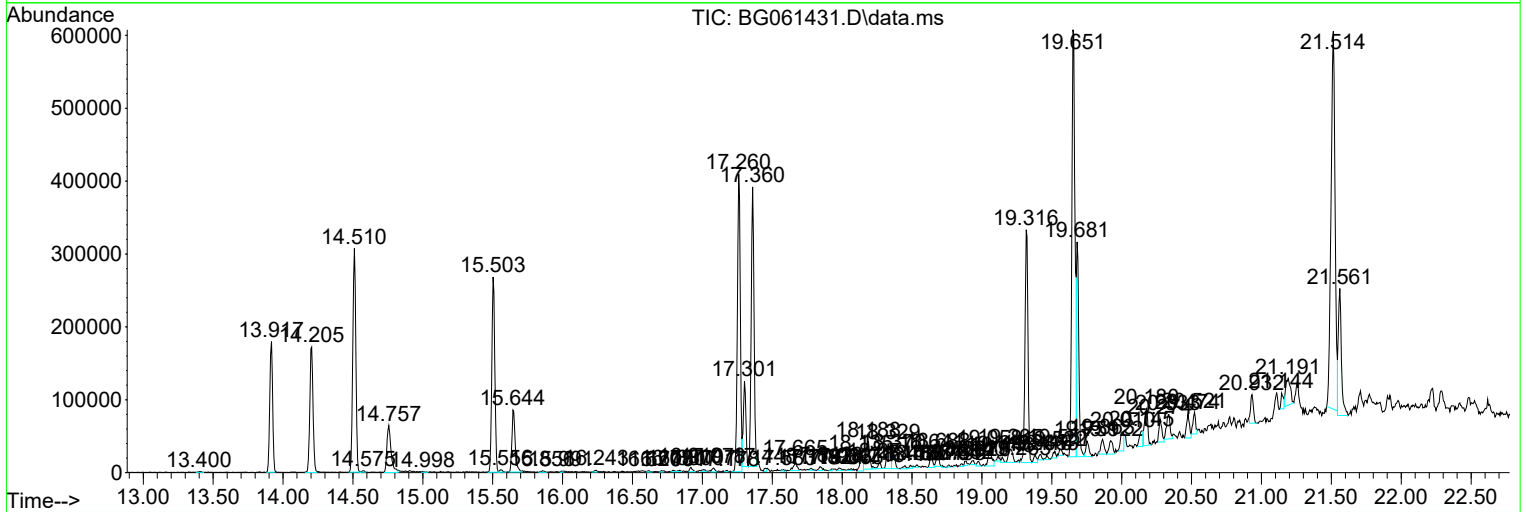
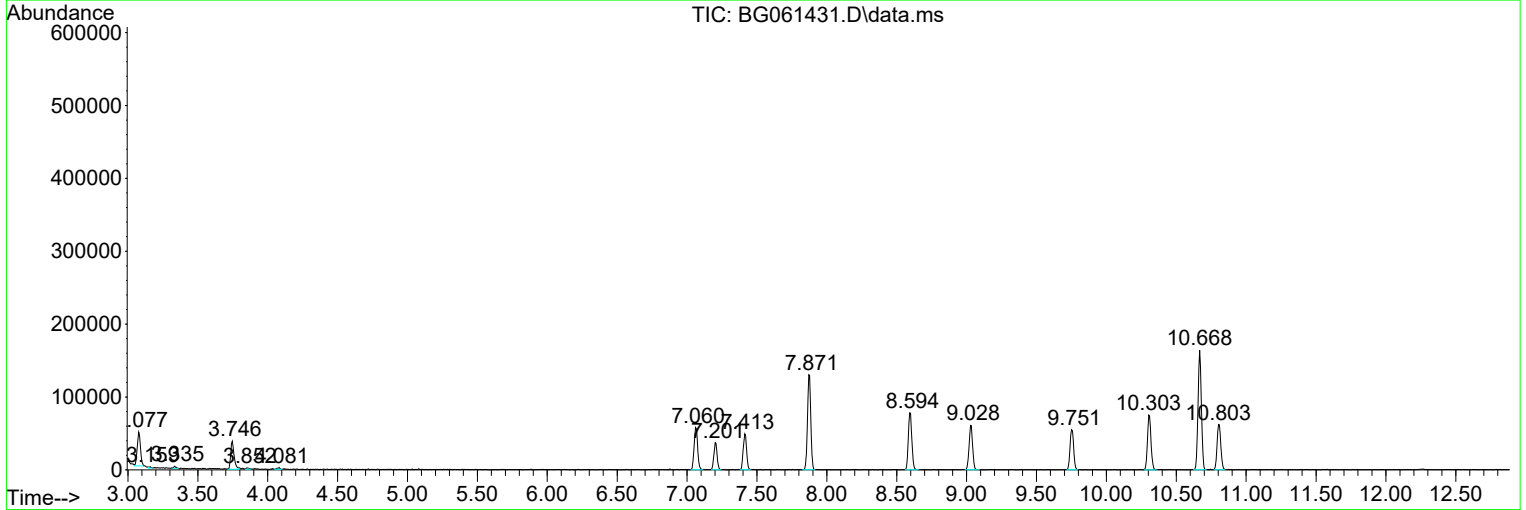
Sum of corrected areas: 11212968

Data Path : Z:\svoasrv\HPCHEM1\BNA_G\Data\BG060324\
 Data File : BG061431.D
 Acq On : 3 Jun 2024 20:15
 Operator : MA/JU
 Sample : P2589-08
 Misc :
 ALS Vial : 14 Sample Multiplier: 1

Instrument :
 BNA_G
 ClientSampleId :
 BH5W7

Quant Method : Z:\svoasrv\HPCHEM1\BNA_G\Methods\SFAM-EPA-BG052124.MA.M
 Quant Title : SVOA CALIBRATION

TIC Library : C:\DATABASE\NIST20.L
 TIC Integration Parameters: LSCINT.P



Data Path : Z:\svoasrv\HPCHEM1\BNA_G\Data\BG060324\
 Data File : BG061431.D
 Acq On : 3 Jun 2024 20:15
 Operator : MA/JU
 Sample : P2589-08
 Misc :
 ALS Vial : 14 Sample Multiplier: 1

Instrument :
 BNA_G
 ClientSampleId :
 BH5W7

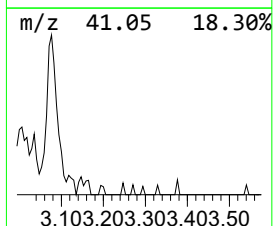
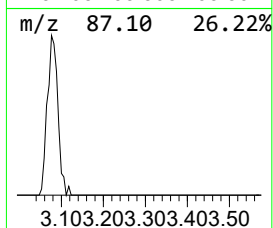
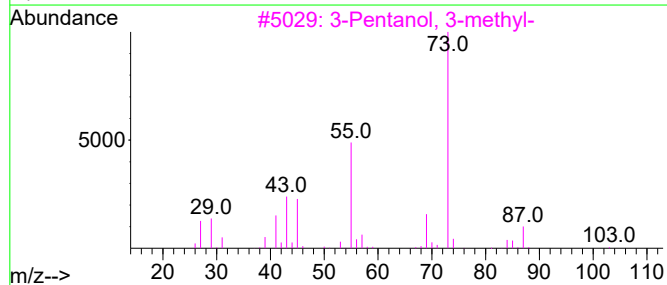
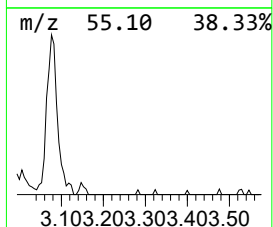
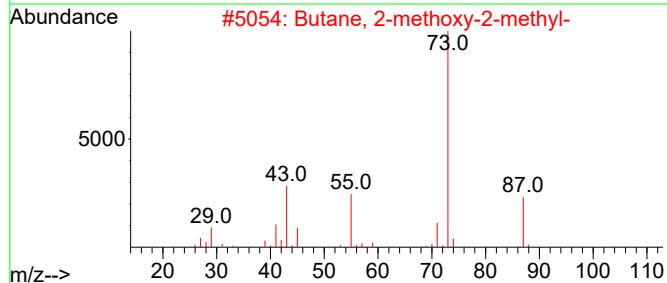
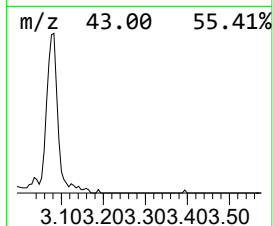
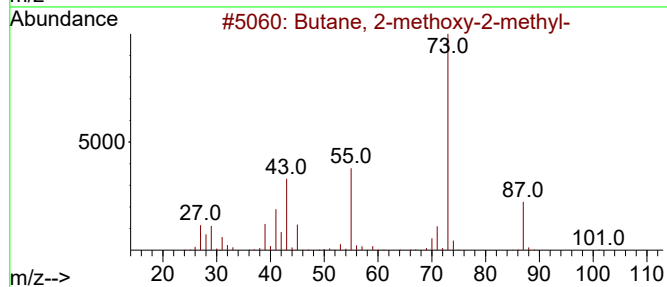
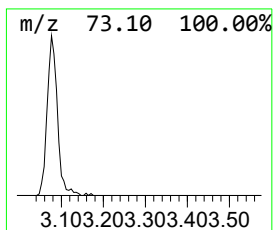
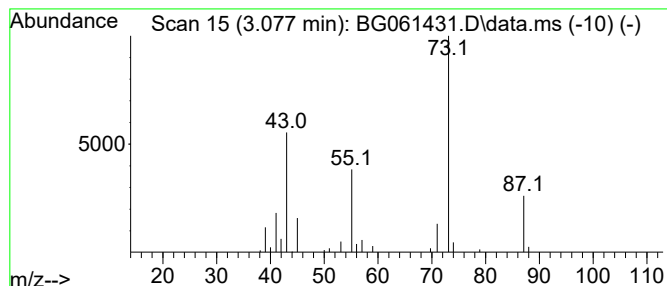
Quant Method : Z:\svoasrv\HPCHEM1\BNA_G\Methods\SFAM-EPA-BG052124.MA.M
 Quant Title : SVOA CALIBRATION

TIC Library : C:\DATABASE\NIST20.L
 TIC Integration Parameters: LSCINT.P

 Peak Number 1 Butane, 2-methoxy-2-methyl- Concentration Rank 1

R.T.	EstConc	Area	Relative to ISTD	R.T.
3.077	6.88 ng/ul	74349	1,4-Dichlorobenzene-d4	7.877

Hit#	of	5	Tentative ID	MW	MolForm	CAS#	Qual
1			Butane, 2-methoxy-2-methyl-	102	C6H14O	000994-05-8	83
2			Butane, 2-methoxy-2-methyl-	102	C6H14O	000994-05-8	83
3			3-Pentanol, 3-methyl-	102	C6H14O	000077-74-7	42
4			2,2,4-Trimethyl-3-pentanol	130	C8H18O	005162-48-1	39
5			3-Pentanol, 2,4-dimethyl-	116	C7H16O	000600-36-2	38



Data Path : Z:\svoasrv\HPCHEM1\BNA_G\Data\BG060324\
 Data File : BG061431.D
 Acq On : 3 Jun 2024 20:15
 Operator : MA/JU
 Sample : P2589-08
 Misc :
 ALS Vial : 14 Sample Multiplier: 1

Instrument :
 BNA_G
 ClientSampleId :
 BH5W7

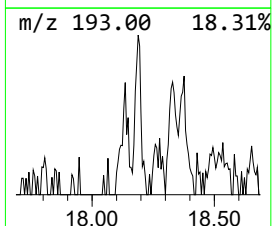
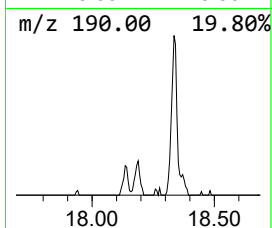
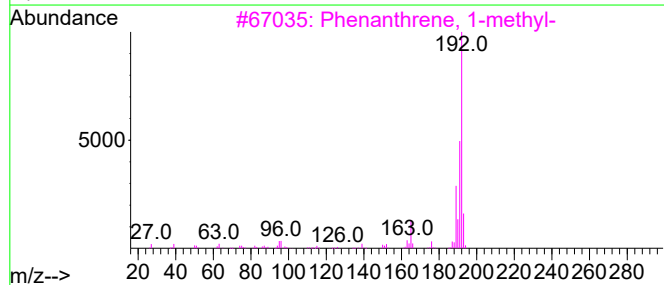
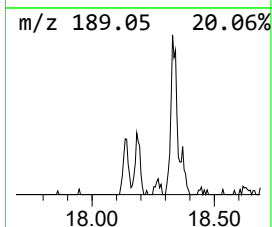
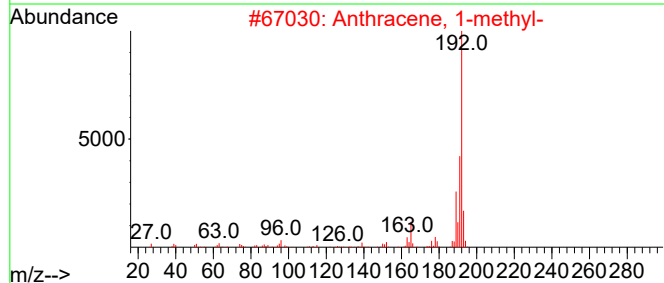
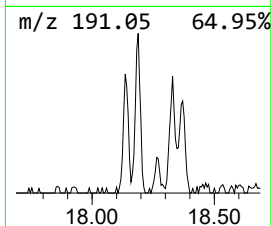
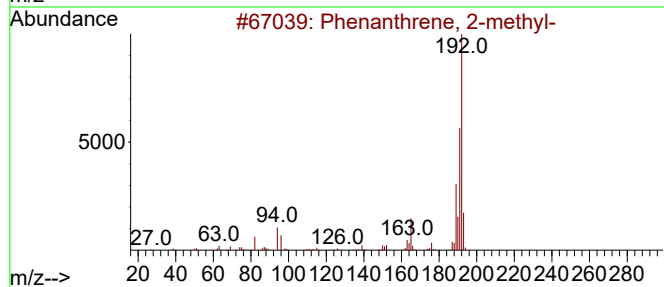
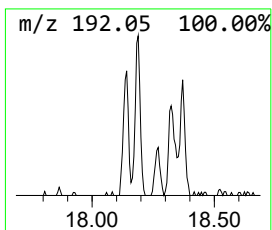
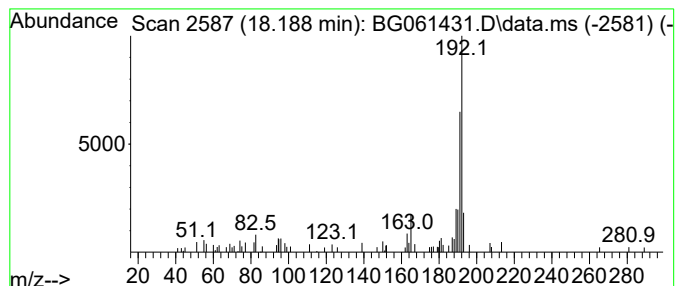
Quant Method : Z:\svoasrv\HPCHEM1\BNA_G\Methods\SFAM-EPA-BG052124.MA.M
 Quant Title : SVOA CALIBRATION

TIC Library : C:\DATABASE\NIST20.L
 TIC Integration Parameters: LSCINT.P

 Peak Number 2 Phenanthrene, 2-methyl- Concentration Rank 3

R.T.	EstConc	Area	Relative to ISTD	R.T.
18.188	2.38 ng/ul	72834	Phenanthrene-d10	17.260

Hit#	of 5	Tentative ID	MW	MolForm	CAS#	Qual
1		Phenanthrene, 2-methyl-	192	C15H12	002531-84-2	91
2		Anthracene, 1-methyl-	192	C15H12	000610-48-0	81
3		Phenanthrene, 1-methyl-	192	C15H12	000832-69-9	81
4		Anthracene, 9-methyl-	192	C15H12	000779-02-2	81
5		Anthracene, 9-methyl-	192	C15H12	000779-02-2	81



Data Path : Z:\svoasrv\HPCHEM1\BNA_G\Data\BG060324\
 Data File : BG061431.D
 Acq On : 3 Jun 2024 20:15
 Operator : MA/JU
 Sample : P2589-08
 Misc :
 ALS Vial : 14 Sample Multiplier: 1

Instrument :
 BNA_G
 ClientSampleId :
 BH5W7

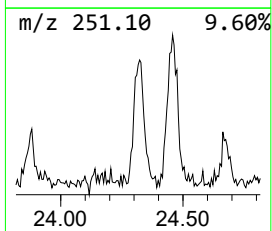
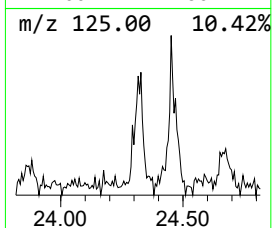
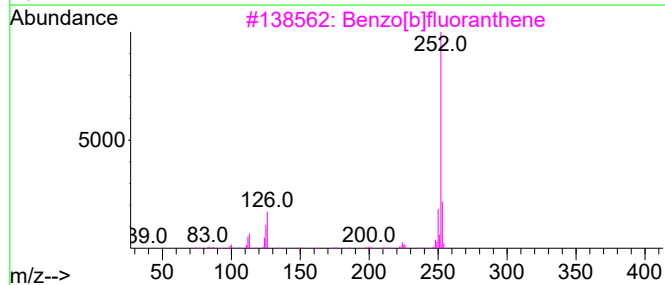
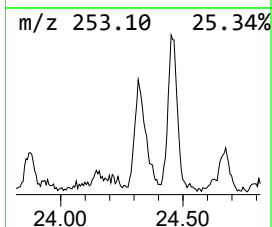
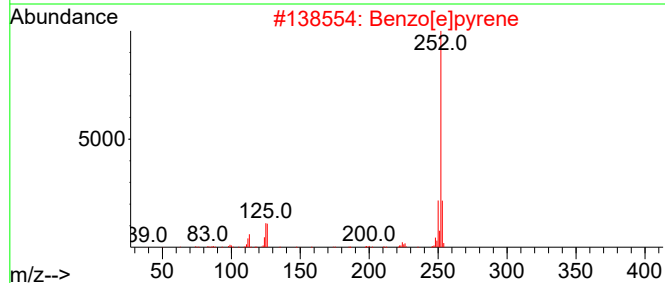
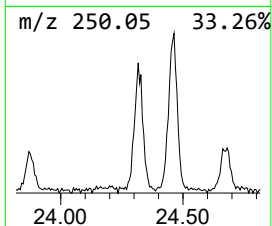
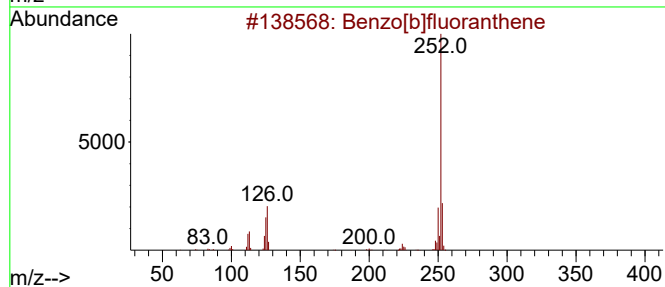
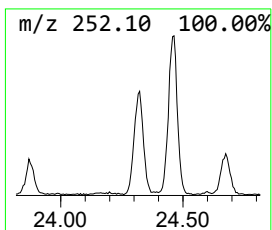
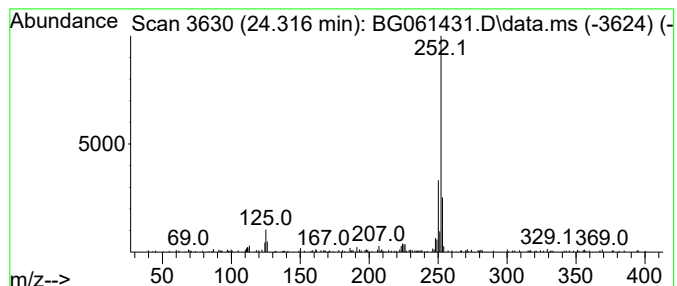
Quant Method : Z:\svoasrv\HPCHEM1\BNA_G\Methods\SFAM-EPA-BG052124.MA.M
 Quant Title : SVOA CALIBRATION

TIC Library : C:\DATABASE\NIST20.L
 TIC Integration Parameters: LSCINT.P

 Peak Number 3 Benzo[e]pyrene Concentration Rank 2

R.T.	EstConc	Area	Relative to ISTD	R.T.
24.316	4.01 ng/ul	166587	Perylene-d12	24.604

Hit#	of	5	Tentative ID	MW	MolForm	CAS#	Qual
1			Benzo[b]fluoranthene	252	C20H12	000205-99-2	91
2			Benzo[e]pyrene	252	C20H12	000192-97-2	91
3			Benzo[b]fluoranthene	252	C20H12	000205-99-2	90
4			Benzo[a]pyrene	252	C20H12	000050-32-8	90
5			Benzo[k]fluoranthene	252	C20H12	000207-08-9	90



Data Path : Z:\svoasrv\HPCHEM1\BNA_G\Data\BG060324\
Data File : BG061431.D
Acq On : 3 Jun 2024 20:15
Operator : MA/JU
Sample : P2589-08
Misc :
ALS Vial : 14 Sample Multiplier: 1

Instrument :
BNA_G
ClientSampleId :
BH5W7

Quant Method : Z:\svoasrv\HPCHEM1\BNA_G\Methods\SFAM-EPA-BG052124.MA.M
Quant Title : SVOA CALIBRATION

TIC Library : C:\DATABASE\NIST20.L
TIC Integration Parameters: LSCINT.P

TIC Top Hit name	RT	EstConc	Units	Response	--Internal Standard--			
					#	RT	Resp	Conc
Butane, 2-metho...	3.077	6.9	ng/u1	74349	1	7.877	216113	20.0
Phenanthrene, 2...	18.188	2.4	ng/u1	72834	4	17.260	612293	20.0
Benzo[e]pyrene	24.316	4.0	ng/u1	166587	6	24.604	830173	20.0