

Data Path : Z:\SVOASRV\HPCHEM1\BNA_G\DATA\BG060520\
 Data File : BG045632.D
 Acq On : 6 Jun 2020 2:59
 Operator : CG/JU
 Sample : PB129334BL
 Misc :
 ALS Vial : 20 Sample Multiplier: 1

Instrument :
 BNA_G
 ClientSampleId :
 PB129334BL

Integration Parameters: rteint.p
 Integrator: RTE
 Smoothing : ON Filtering: 5
 Sampling : 1 Min Area: 3 % of largest Peak
 Start Thrs: 0.2 Max Peaks: 100
 Stop Thrs : 0 Peak Location: TOP

If leading or trailing edge < 100 prefer < Baseline drop else tangent >
 Peak separation: 5

Method : Z:\SVOASRV\HPCHEM1\BNA_G\METHODS\8270-BG051520.M
 Title : ASP BNA STANDARDS FOR 5 POINT CALIBRATION

Signal : TIC

peak #	R.T. min	first scan	max scan	last scan	PK TY	peak height	corr. area	corr. % max.	% of total
1	5.537	410	417	430	rBV	891273	1577353	33.81%	7.874%
2	7.140	682	690	703	rBV	920145	1699745	36.43%	8.485%
3	7.951	821	828	838	rBV	202778	361701	7.75%	1.806%
4	8.274	875	883	895	rBV	833436	1477431	31.66%	7.376%
5	9.114	1018	1026	1040	rBV	606698	1163829	24.94%	5.810%
6	10.759	1295	1306	1316	rBV	247620	483962	10.37%	2.416%
7	13.214	1715	1724	1733	rBV	1727891	2803096	60.08%	13.994%
8	14.595	1952	1959	1969	rBV2	436028	704100	15.09%	3.515%
9	16.087	2206	2213	2227	rBV	1384760	2279438	48.85%	11.379%
10	17.344	2419	2427	2441	rBV	528546	875132	18.76%	4.369%
11	19.958	2865	2872	2883	rBV	3326559	4665899	100.00%	23.293%
12	21.603	3145	3152	3164	rBV2	545146	976007	20.92%	4.872%
13	24.746	3677	3687	3702	rBV2	299354	963582	20.65%	4.810%

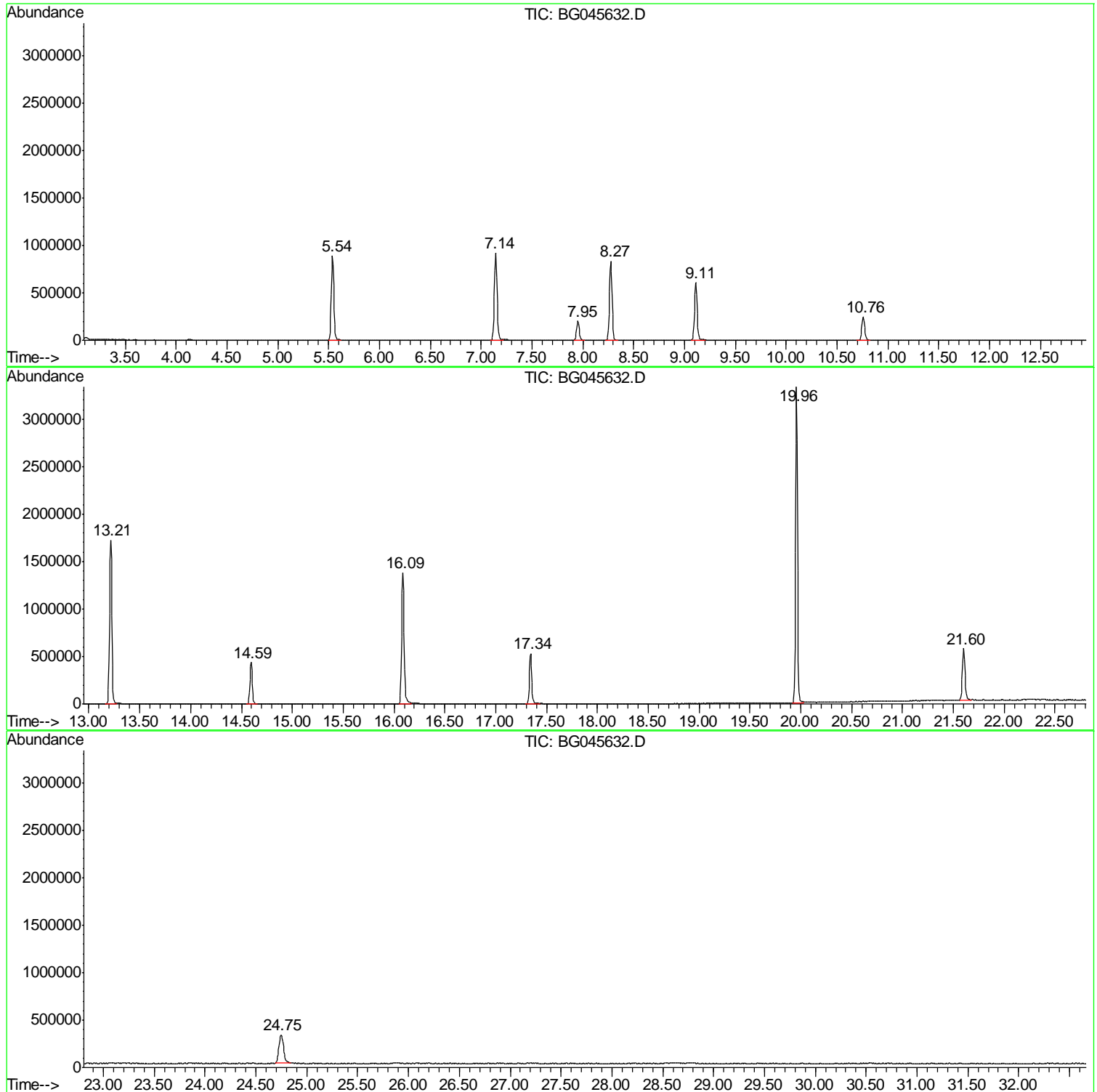
Sum of corrected areas: 20031275

Data Path : Z:\SVOASRV\HPCHEM1\BNA_G\DATA\BG060520\
Data File : BG045632.D
Acq On : 6 Jun 2020 2:59
Operator : CG/JU
Sample : PB129334BL
Misc :
ALS Vial : 20 Sample Multiplier: 1

Instrument :
BNA_G
ClientSampleId :
PB129334BL

Quant Method : Z:\SVOASRV\HPCHEM1\BNA_G\METHODS\8270-BG051520.M
Quant Title : ASP BNA STANDARDS FOR 5 POINT CALIBRATION

TIC Library : C:\Database\NIST11.L
TIC Integration Parameters: LSCINT.P



Data Path : Z:\SVOASRV\HPCHEM1\BNA_G\DATA\BG060520\
Data File : BG045632.D
Acq On : 6 Jun 2020 2:59
Operator : CG/JU
Sample : PB129334BL
Misc :
ALS Vial : 20 Sample Multiplier: 1

Instrument :
BNA_G
ClientSampleId :
PB129334BL

Quant Method : Z:\SVOASRV\HPCHEM1\BNA_G\METHODS\8270-BG051520.M
Quant Title : ASP BNA STANDARDS FOR 5 POINT CALIBRATION

TIC Library : C:\Database\NIST11.L
TIC Integration Parameters: LSCINT.P

No Library Search Compounds Detected

Data Path : Z:\SVOASRV\HPCHEM1\BNA_G\DATA\BG060520\
Data File : BG045632.D
Acq On : 6 Jun 2020 2:59
Operator : CG/JU
Sample : PB129334BL
Misc :
ALS Vial : 20 Sample Multiplier: 1

Instrument :
BNA_G
ClientSampleId :
PB129334BL

Quant Method : Z:\SVOASRV\HPCHEM1\BNA_G\METHODS\8270-BG051520.M
Quant Title : ASP BNA STANDARDS FOR 5 POINT CALIBRATION

TIC Library : C:\Database\NIST11.L
TIC Integration Parameters: LSCINT.P

TIC Top Hit name	RT	EstConc	Units	Response	--Internal Standard--			
					#	RT	Resp	Conc
