

Data Path : Z:\HPCHEM1\BNA_G\DATA\BG060615\
 Data File : BG017515.D
 Acq On : 7 Jun 2015 1:51
 Operator : TP/IZ
 Sample : G2457-27
 Misc :
 ALS Vial : 13 Sample Multiplier: 1

Instrument :
 BNA_G
 ClientSampleId :
 SP-6

Quant Time: Jun 08 05:18:36 2015
 Quant Method : Z:\HPCHEM1\BNA_G\METHODS\8270-BG060315.M
 Quant Title : ASP BNA STANDARDS FOR 5 POINT CALIBRATION
 QLast Update : Thu Jun 04 01:31:15 2015
 Response via : Initial Calibration

Internal Standards	R.T.	QIon	Response	Conc	Units	Dev(Min)
1) 1,4-Dichlorobenzene-d4	7.62	152	14677	20.00	ng	0.00
21) Naphthalene-d8	10.42	136	61131	20.00	ng	0.00
38) Acenaphthene-d10	14.29	164	44063	20.00	ng	0.00
63) Phenanthrene-d10	17.05	188	107274	20.00	ng	0.00
75) Chrysene-d12	21.24	240	118407	20.00	ng	0.00
86) Perylene-d12	23.48	264	120276	20.00	ng	0.01
System Monitoring Compounds						
5) 2-Fluorophenol	5.22	112	111072	133.33	ng	0.00
7) Phenol-d6	6.83	99	136840	120.57	ng	0.00
23) Nitrobenzene-d5	8.79	82	111930	91.40	ng	0.00
41) 2,4,6-Tribromophenol	15.79	330	80529	131.58	ng	0.00
44) 2-Fluorobiphenyl	12.90	172	262573	89.89	ng	0.00
78) Terphenyl-d14	19.68	244	520004	90.77	ng	0.00

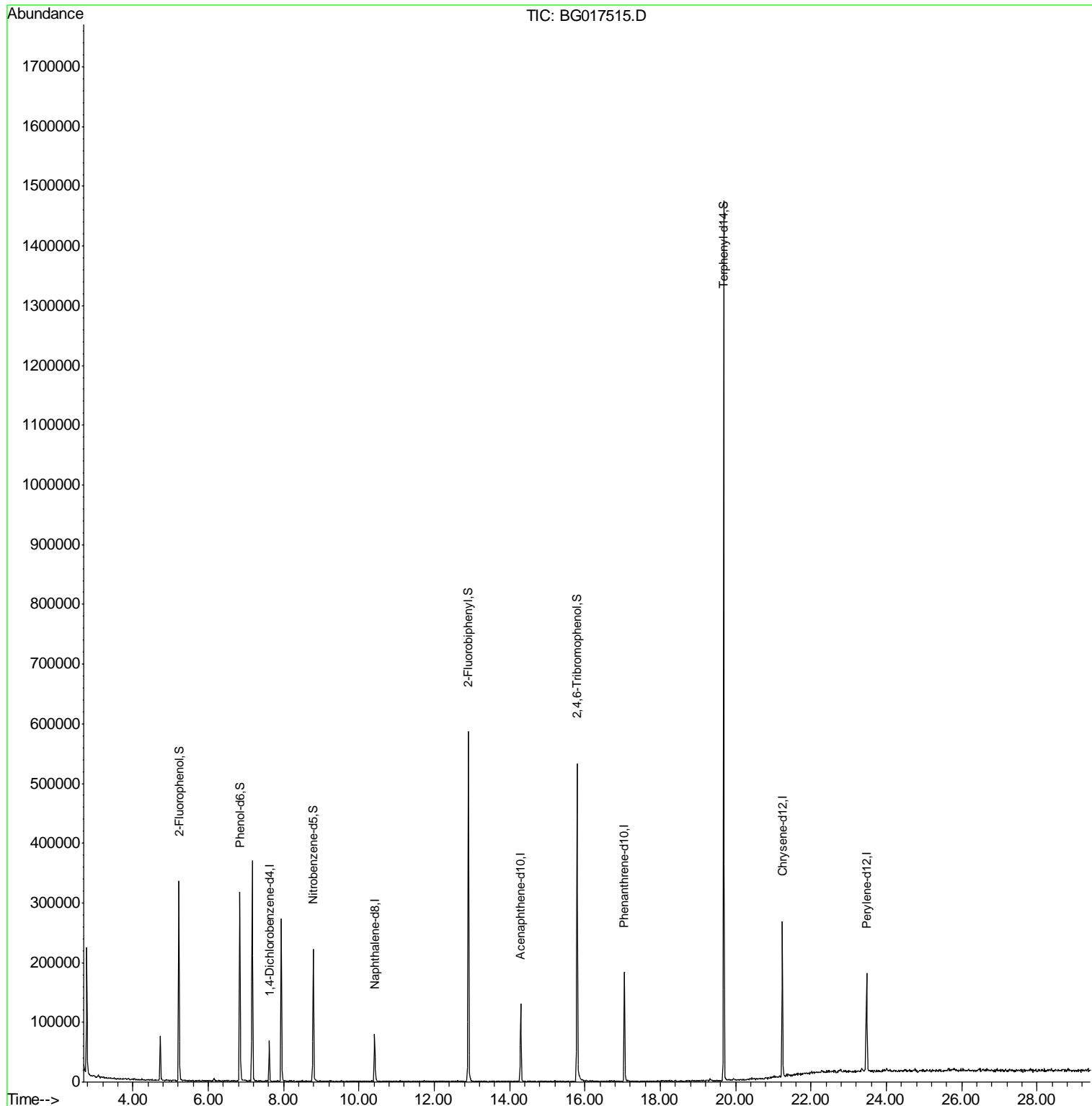
Target Compounds Qvalue

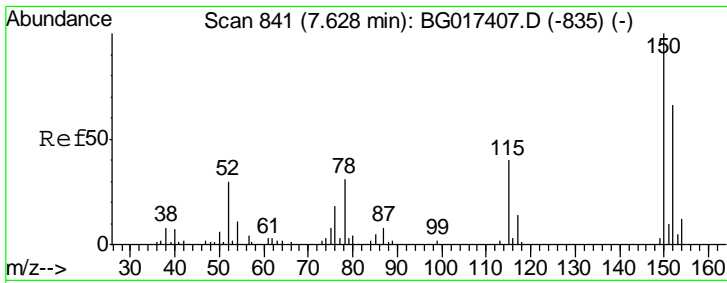
(#) = qualifier out of range (m) = manual integration (+) = signals summed

Data Path : Z:\HPCHEM1\BNA_G\DATA\BG060615\
 Data File : BG017515.D
 Acq On : 7 Jun 2015 1:51
 Operator : TP/IZ
 Sample : G2457-27
 Misc :
 ALS Vial : 13 Sample Multiplier: 1

Instrument :
 BNA_G
 ClientSampleId :
 SP-6

Quant Time: Jun 08 05:18:36 2015
 Quant Method : Z:\HPCHEM1\BNA_G\METHODS\8270-BG060315.M
 Quant Title : ASP BNA STANDARDS FOR 5 POINT CALIBRATION
 QLast Update : Thu Jun 04 01:31:15 2015
 Response via : Initial Calibration

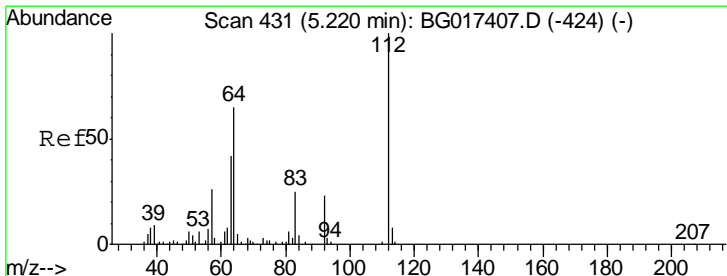
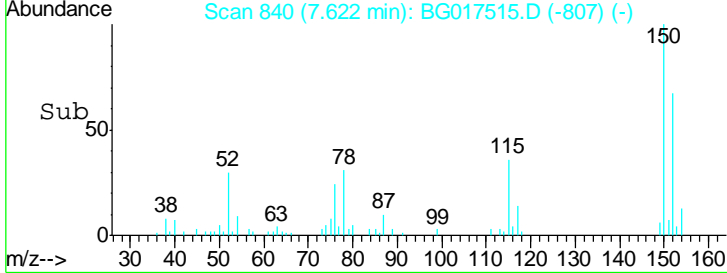
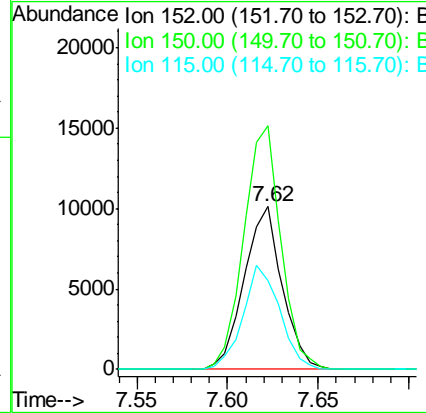
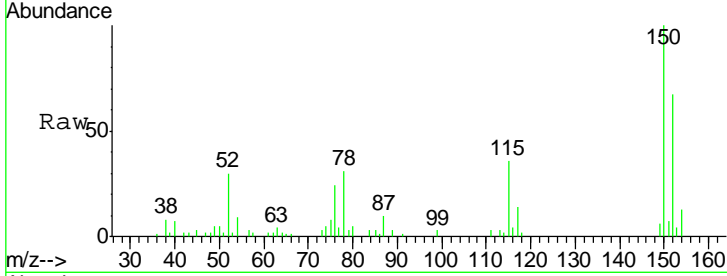




#1
 1,4-Dichlorobenzene-d4
 Concen: 20.00 ng
 RT: 7.62 min Scan# 840
 Delta R.T. -0.01 min
 Lab File: BG017515.D
 Acq: 7 Jun 2015 1:51

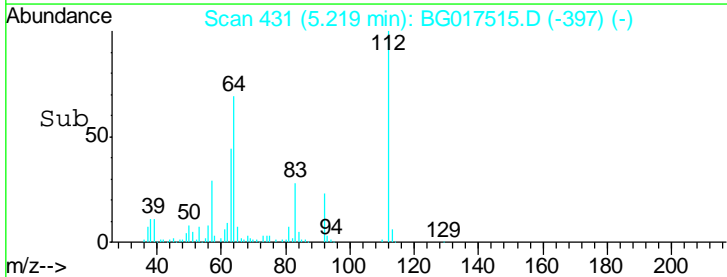
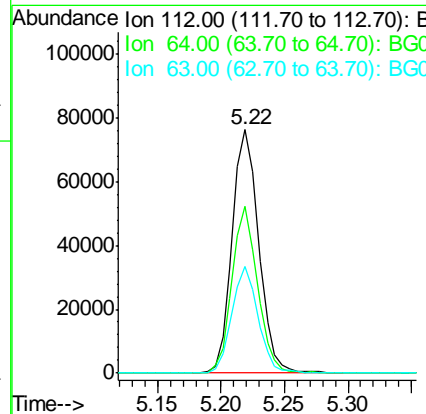
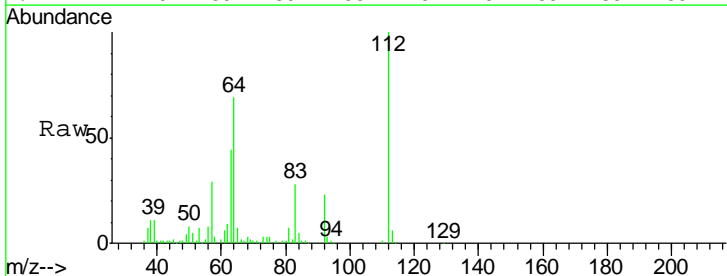
Instrument :
 BNA_G
 ClientSampled :
 SP-6

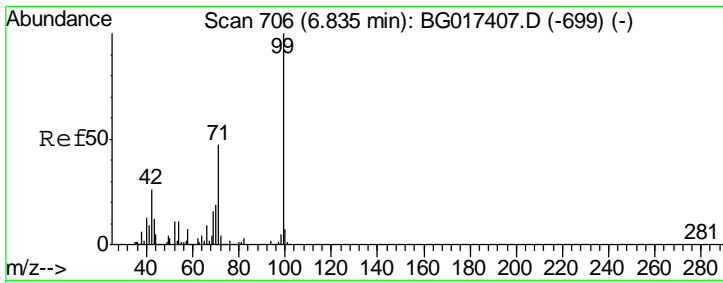
Tgt Ion	Resp	Lower	Upper
152	14677		
150	149.7	121.7	182.5
115	54.2	48.6	73.0



#5
 2-Fluorophenol
 Concen: 133.33 ng
 RT: 5.22 min Scan# 431
 Delta R.T. -0.00 min
 Lab File: BG017515.D
 Acq: 7 Jun 2015 1:51

Tgt Ion	Resp	Lower	Upper
112	111072		
64	68.6	51.6	77.4
63	44.0	33.3	49.9

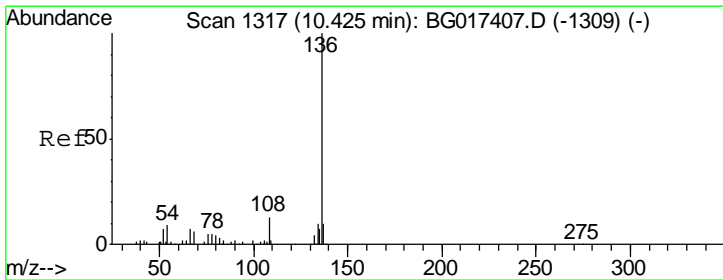
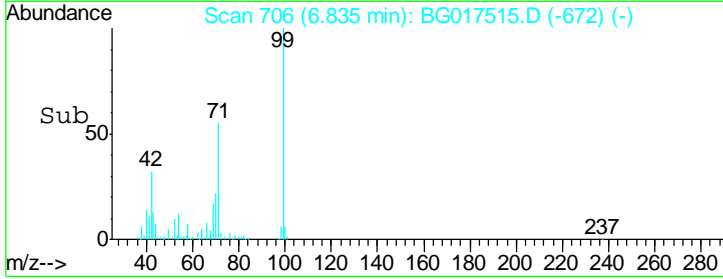
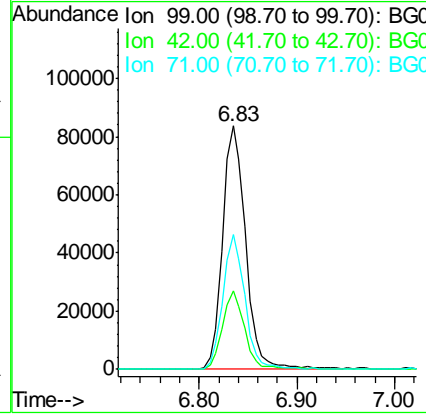
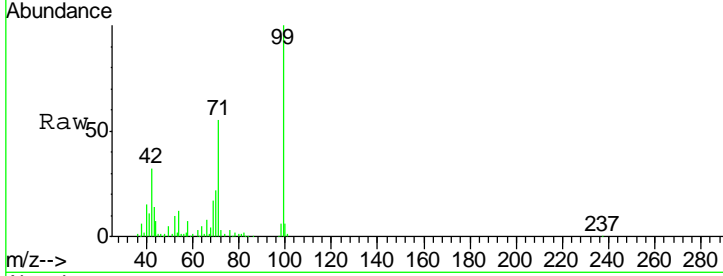




#7
 Phenol-d6
 Concen: 120.57 ng
 RT: 6.83 min Scan# 706
 Delta R.T. -0.00 min
 Lab File: BG017515.D
 Acq: 7 Jun 2015 1:51

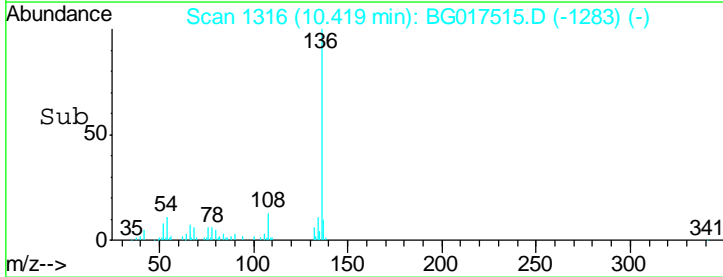
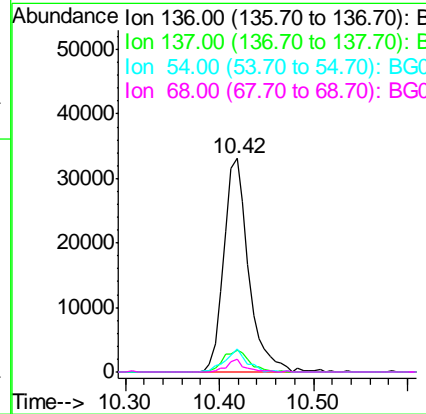
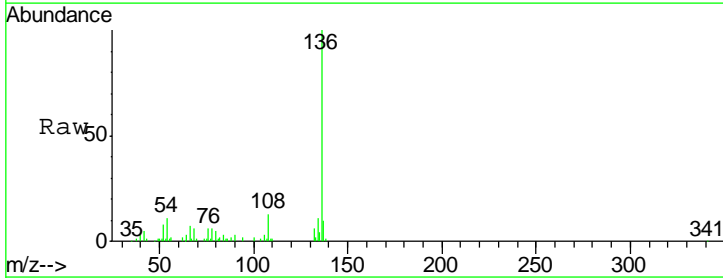
Instrument :
 BNA_G
 ClientSampled :
 SP-6

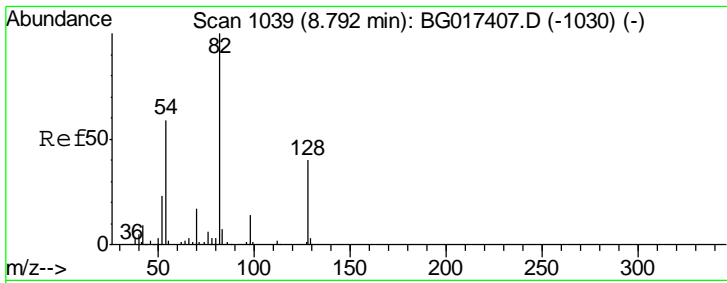
Tgt Ion	Resp	Lower	Upper
99	136840		
42	32.1	21.0	31.6#
71	55.1	37.2	55.8



#21
 Naphthalene-d8
 Concen: 20.00 ng
 RT: 10.42 min Scan# 1316
 Delta R.T. -0.01 min
 Lab File: BG017515.D
 Acq: 7 Jun 2015 1:51

Tgt Ion	Resp	Lower	Upper
136	61131		
137	10.4	7.9	11.9
54	10.7	7.2	10.8
68	5.8	4.5	6.7

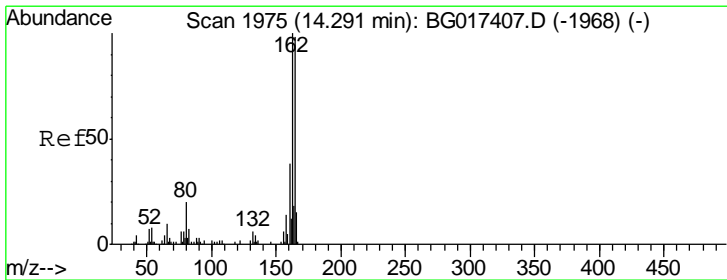
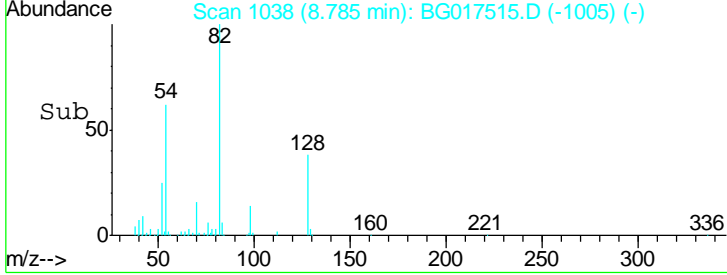
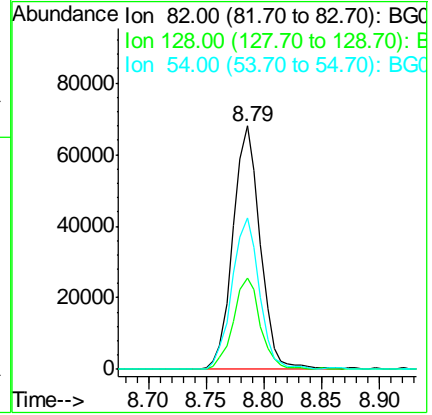
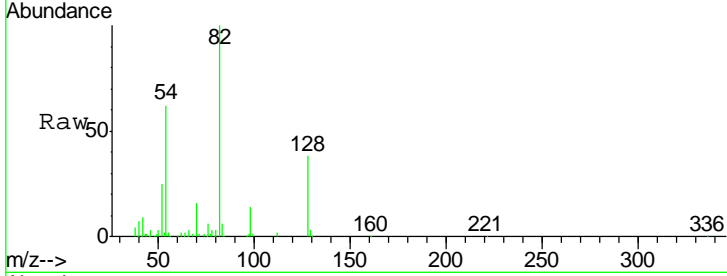




#23
 Nitrobenzene-d5
 Concen: 91.40 ng
 RT: 8.79 min Scan# 1038
 Delta R.T. -0.01 min
 Lab File: BG017515.D
 Acq: 7 Jun 2015 1:51

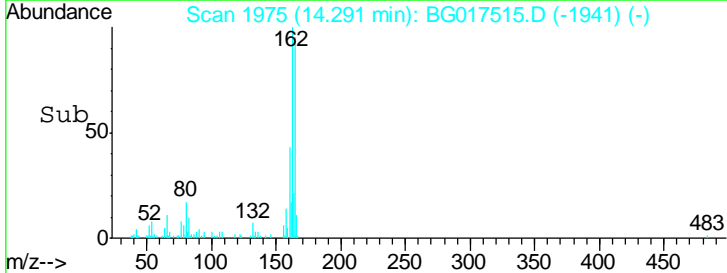
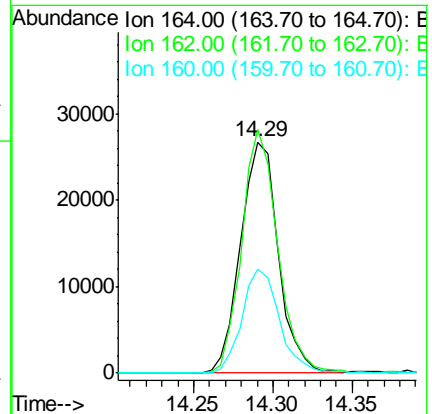
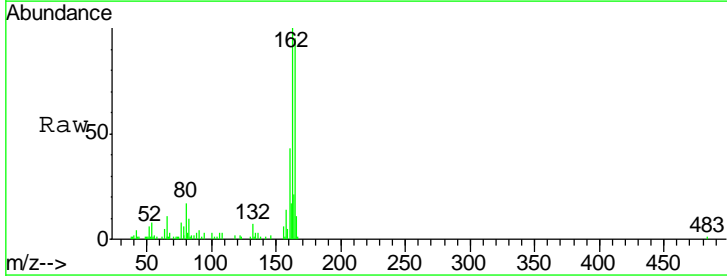
Instrument :
 BNA_G
 ClientSampled :
 SP-6

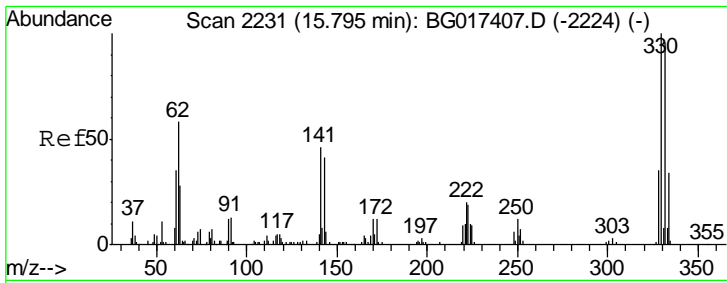
Tgt Ion	Resp	Lower	Upper
82	111930		
128	37.7	32.2	48.4
54	62.3	47.4	71.2



#38
 Acenaphthene-d10
 Concen: 20.00 ng
 RT: 14.29 min Scan# 1975
 Delta R.T. -0.00 min
 Lab File: BG017515.D
 Acq: 7 Jun 2015 1:51

Tgt Ion	Resp	Lower	Upper
164	44063		
162	105.3	81.8	122.6
160	45.2	31.0	46.4

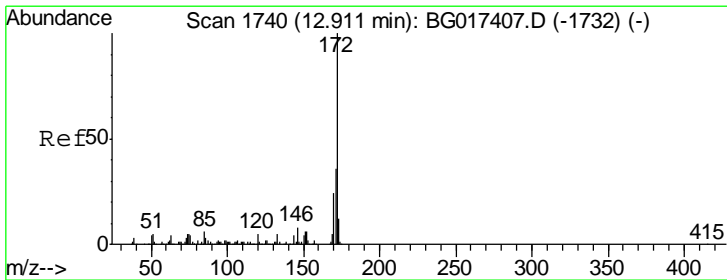
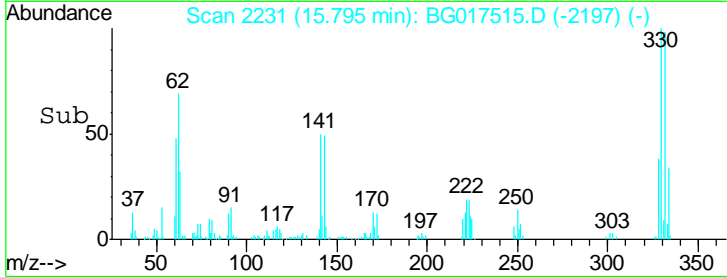
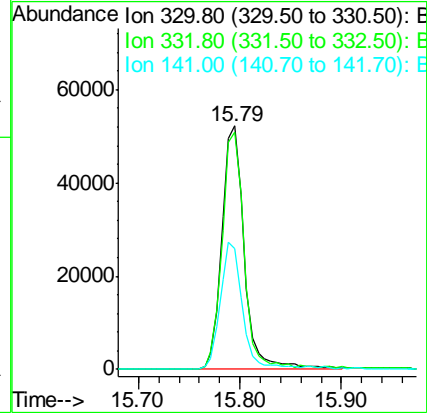
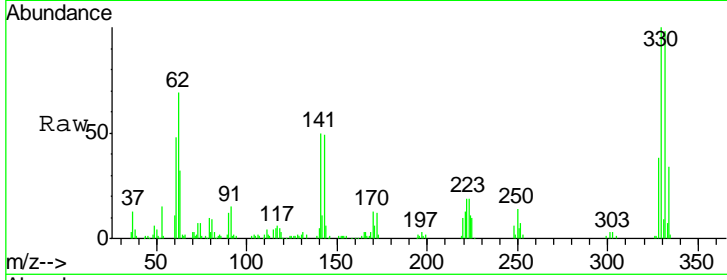




#41
 2,4,6-Tribromophenol
 Concen: 131.58 ng
 RT: 15.79 min Scan# 2231
 Delta R.T. -0.00 min
 Lab File: BG017515.D
 Acq: 7 Jun 2015 1:51

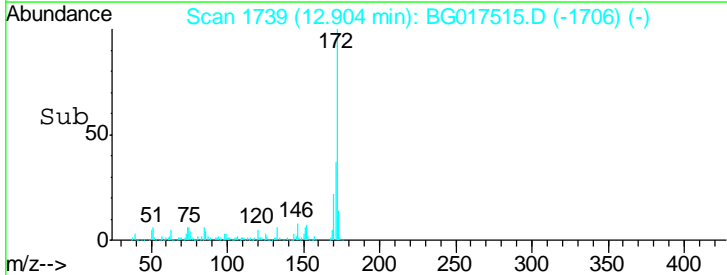
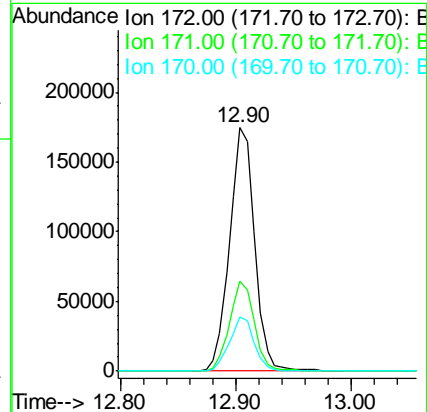
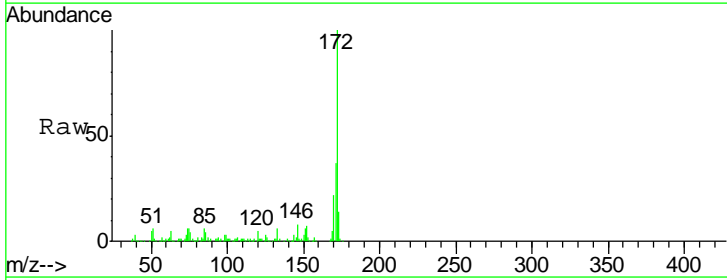
Instrument :
 BNA_G
 ClientSampled :
 SP-6

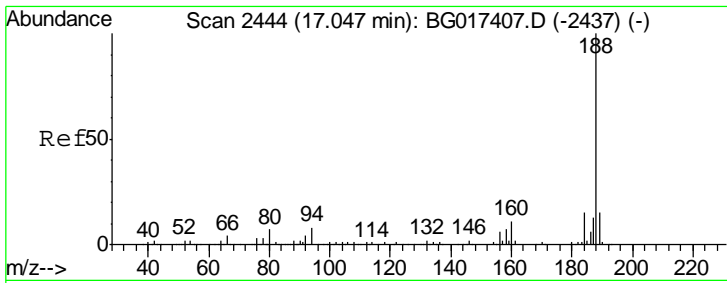
Tgt Ion	Resp	Lower	Upper
330	100		
332	97.6	75.9	113.9
141	51.2	40.2	60.4



#44
 2-Fluorobiphenyl
 Concen: 89.89 ng
 RT: 12.90 min Scan# 1739
 Delta R.T. -0.01 min
 Lab File: BG017515.D
 Acq: 7 Jun 2015 1:51

Tgt Ion	Resp	Lower	Upper
172	100		
171	37.1	29.0	43.6
170	22.3	18.9	28.3

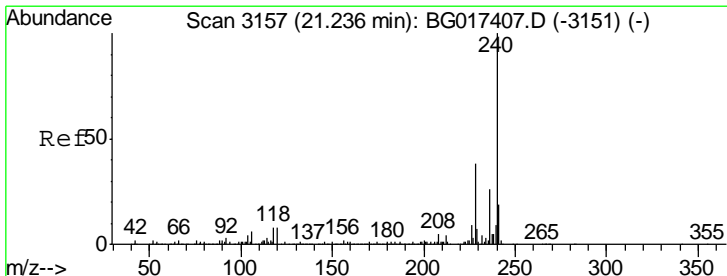
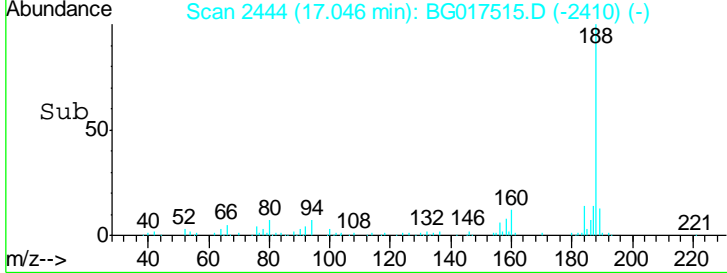
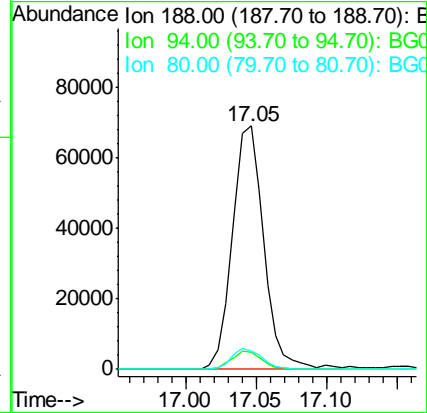
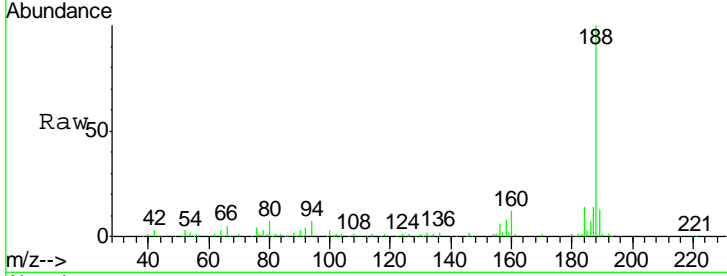




#63
 Phenanthrene-d10
 Concen: 20.00 ng
 RT: 17.05 min Scan# 2444
 Delta R.T. -0.00 min
 Lab File: BG017515.D
 Acq: 7 Jun 2015 1:51

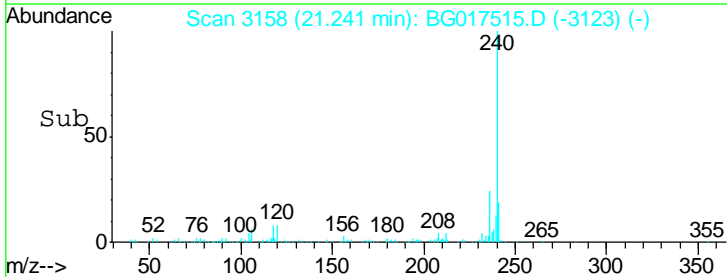
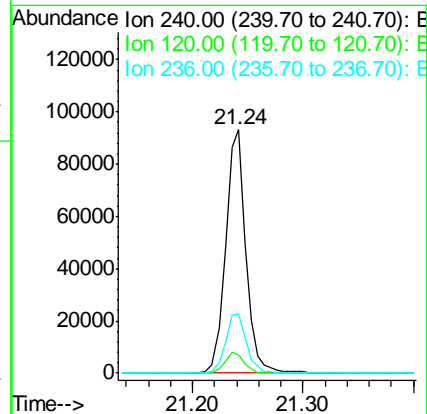
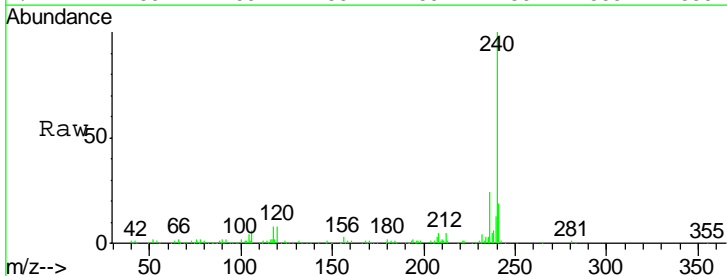
Instrument :
 BNA_G
 ClientSampled :
 SP-6

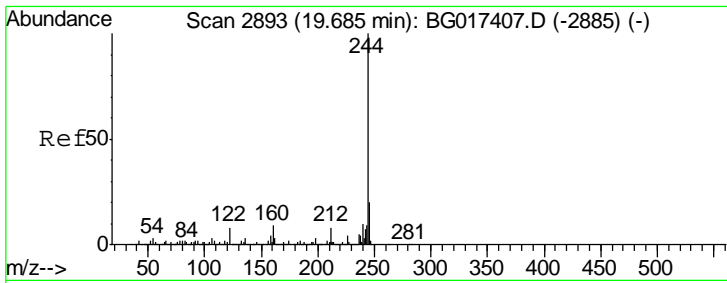
Tgt Ion	Resp	Lower	Upper
188	107274		
94	7.0	6.3	9.5
80	7.5	5.2	7.8



#75
 Chrysene-d12
 Concen: 20.00 ng
 RT: 21.24 min Scan# 3158
 Delta R.T. 0.01 min
 Lab File: BG017515.D
 Acq: 7 Jun 2015 1:51

Tgt Ion	Resp	Lower	Upper
240	118407		
120	7.6	6.5	9.7
236	24.4	20.8	31.2

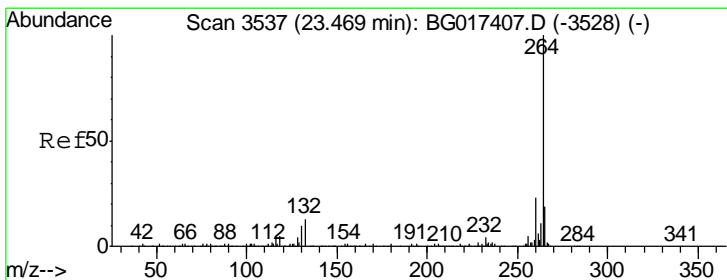
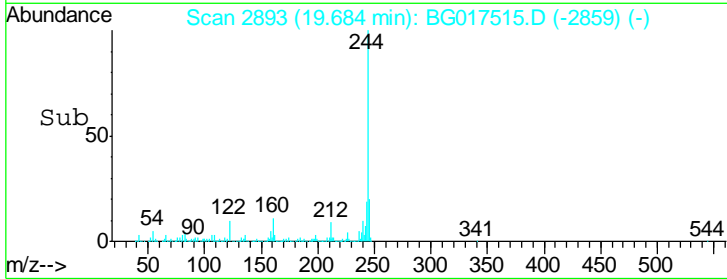
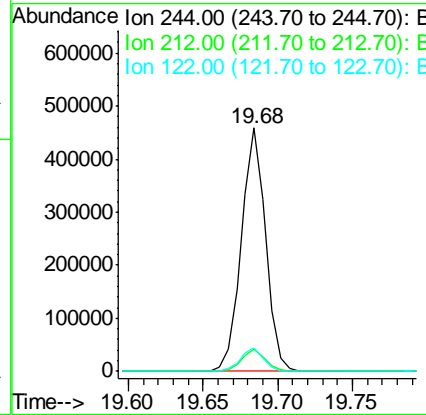
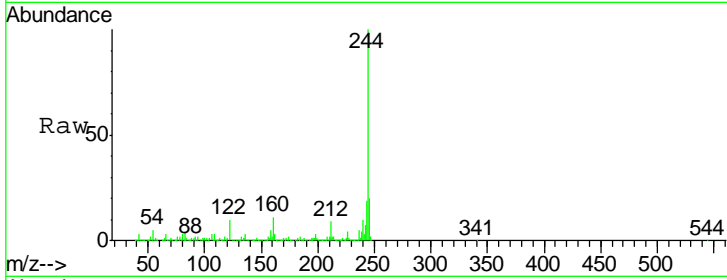




#78
 Terphenyl-d14
 Concen: 90.77 ng
 RT: 19.68 min Scan# 2893
 Delta R.T. -0.00 min
 Lab File: BG017515.D
 Acq: 7 Jun 2015 1:51

Instrument :
 BNA_G
 ClientSampled :
 SP-6

Tgt Ion	Resp	Lower	Upper
244	520004		
212	9.1	6.4	9.6
122	9.6	6.6	10.0



#86
 Perylene-d12
 Concen: 20.00 ng
 RT: 23.48 min Scan# 3539
 Delta R.T. 0.01 min
 Lab File: BG017515.D
 Acq: 7 Jun 2015 1:51

Tgt Ion	Resp	Lower	Upper
264	120276		
260	23.2	18.2	27.4
265	20.8	15.8	23.6

