

Data Path : Z:\HPCHEM1\BNA G\DATA\BG060617\
 Data File : BG027249.D
 Acq On : 6 Jun 2017 14:55
 Operator : SJ/MA
 Sample : I3437-01
 Misc :
 ALS Vial : 12 Sample Multiplier: 1

Instrument :
 BNA_G
 ClientSampleId :
 COMP-1

Quant Time: Jun 06 18:08:37 2017
 Quant Method : Z:\HPCHEM1\BNA G\METHODS\8270-BG060517.M
 Quant Title : ASP BNA STANDARDS FOR 5 POINT CALIBRATION
 QLast Update : Mon Jun 05 16:00:35 2017
 Response via : Initial Calibration

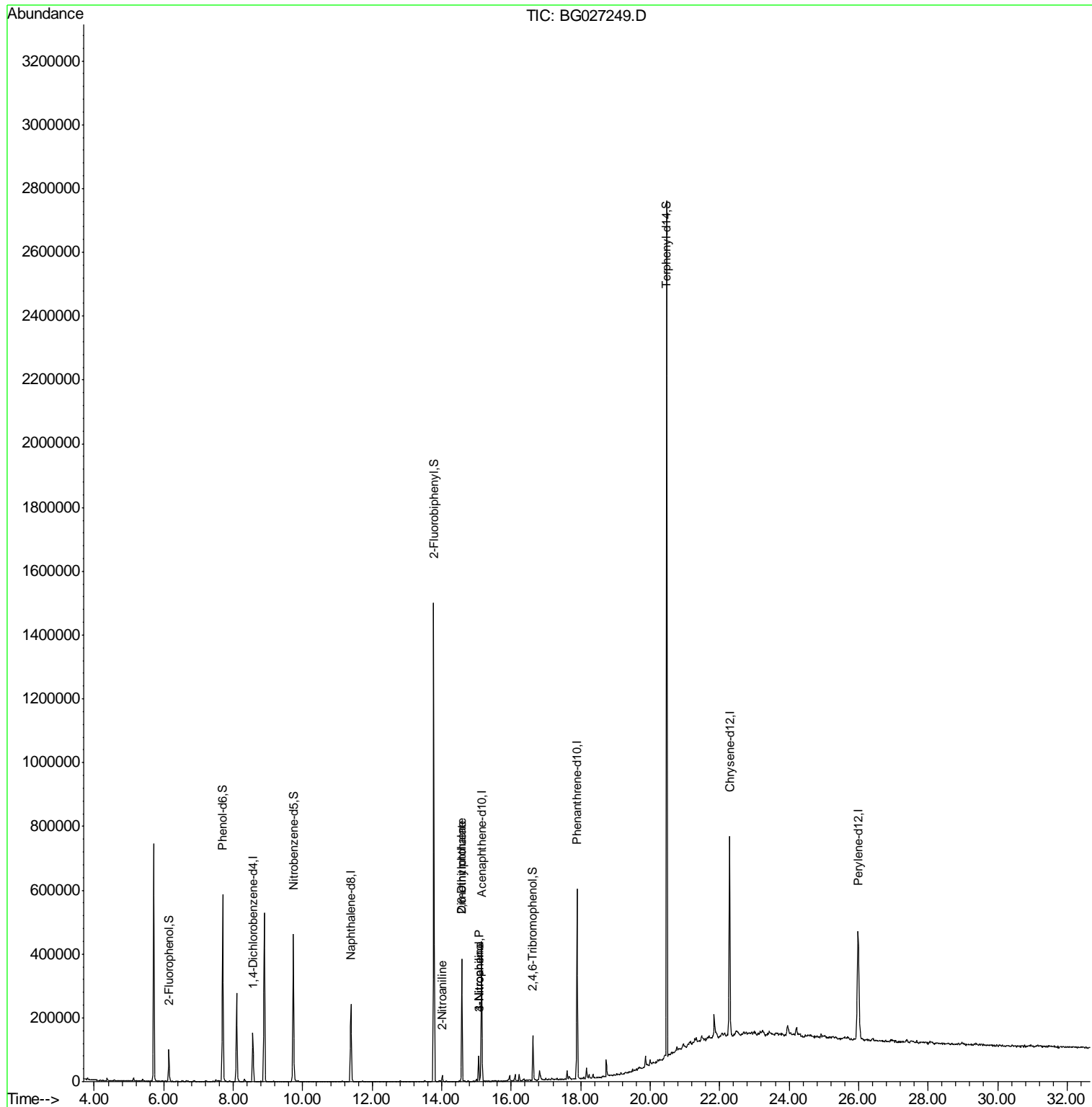
Internal Standards	R.T.	QIon	Response	Conc	Units	Dev(Min)
1) 1,4-Dichlorobenzene-d4	8.57	152	45746	20.00	ng	-0.01
21) Naphthalene-d8	11.39	136	223280	20.00	ng	-0.01
38) Acenaphthene-d10	15.15	164	157410	20.00	ng	-0.01
63) Phenanthrene-d10	17.90	188	392922	20.00	ng	-0.02
75) Chrysene-d12	22.29	240	437398	20.00	ng	-0.02
86) Perylene-d12	25.98	264	421592	20.00	ng	-0.04
System Monitoring Compounds						
5) 2-Fluorophenol	6.15	112	48173	16.07	ng	-0.01
7) Phenol-d6	7.70	99	394328	89.61	ng	0.00
23) Nitrobenzene-d5	9.73	82	306995	86.47	ng	-0.01
41) 2,4,6-Tribromophenol	16.63	330	24375	11.76	ng	-0.02
44) 2-Fluorobiphenyl	13.77	172	804030	71.46	ng	-0.02
78) Terphenyl-d14	20.48	244	1219838	71.14	ng	-0.02
Target Compounds						
47) 2-Nitroaniline	14.02	65	347	6.94	ng	# 16
49) Dimethylphthalate	14.58	163	270237	21.64	ng	96
50) 2,6-Dinitrotoluene	14.58	165	2678	6.55	ng	# 20
52) 3-Nitroaniline	15.06	138	189	5.78	ng	# 1
55) 4-Nitrophenol	15.07	139	4291	7.80	ng	# 1

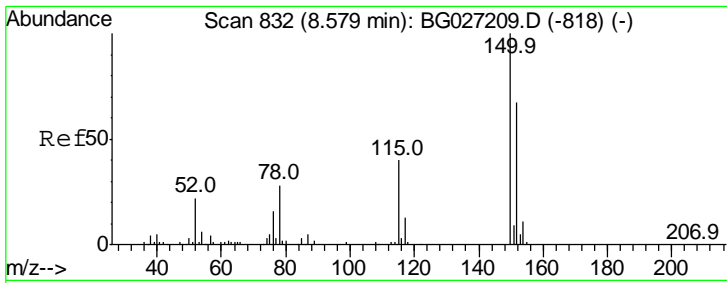
(#) = qualifier out of range (m) = manual integration (+) = signals summed

Data Path : Z:\HPCHEM1\BNA G\DATA\BG060617\
 Data File : BG027249.D
 Acq On : 6 Jun 2017 14:55
 Operator : SJ/MA
 Sample : I3437-01
 Misc :
 ALS Vial : 12 Sample Multiplier: 1

Instrument :
 BNA_G
 ClientSampleId :
 COMP-1

Quant Time: Jun 06 18:08:37 2017
 Quant Method : Z:\HPCHEM1\BNA G\METHODS\8270-BG060517.M
 Quant Title : ASP BNA STANDARDS FOR 5 POINT CALIBRATION
 QLast Update : Mon Jun 05 16:00:35 2017
 Response via : Initial Calibration

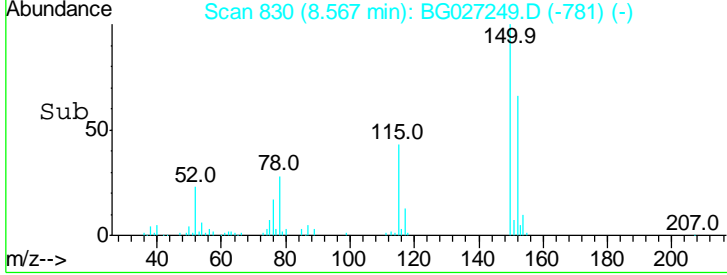
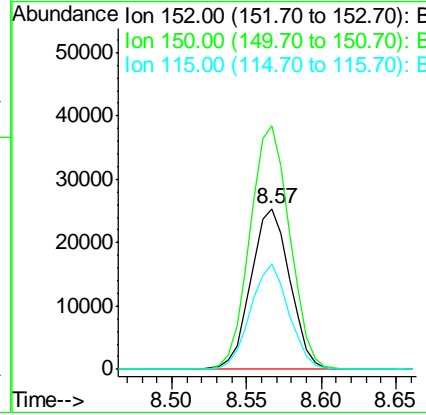
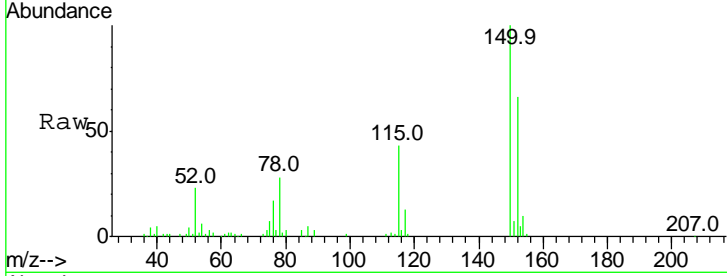




#1
 1,4-Dichlorobenzene-d4
 Concen: 20.00 ng
 RT: 8.57 min Scan# 830
 Delta R.T. -0.01 min
 Lab File: BG027249.D
 Acq: 6 Jun 2017 14:55

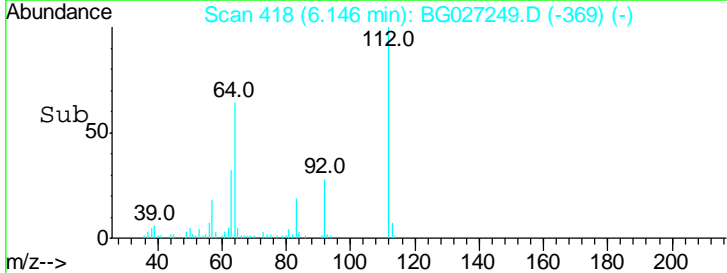
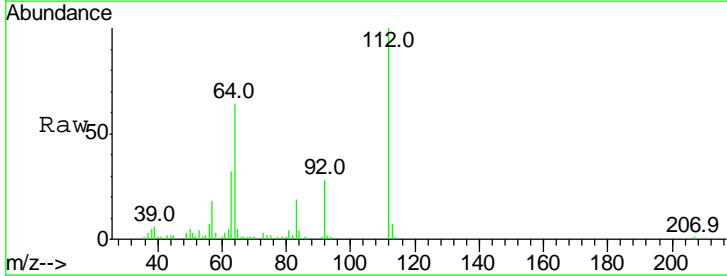
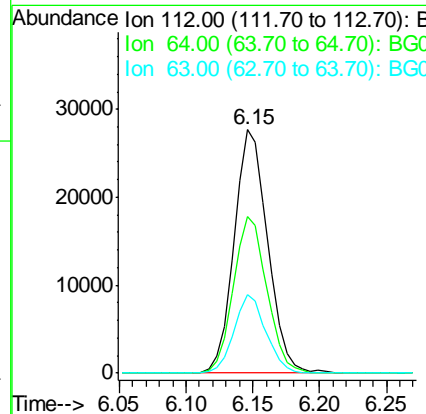
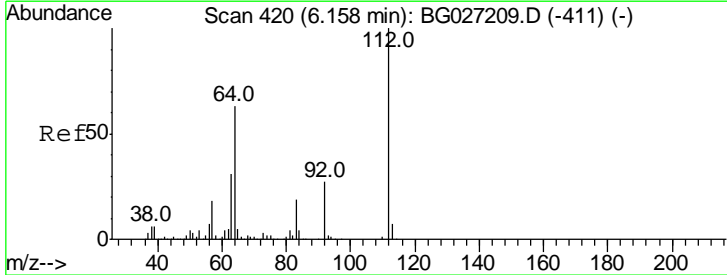
Instrument :
 BNA_G
 ClientSampleId :
 COMP-1

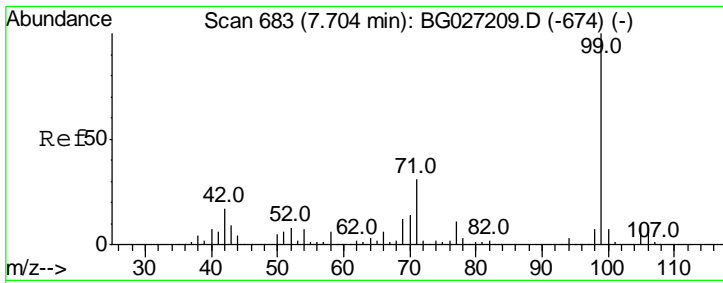
Tgt Ion	Resp	Lower	Upper
152	45746		
152	100		
150	151.7	114.0	171.0
115	65.6	48.1	72.1



#5
 2-Fluorophenol
 Concen: 16.07 ng
 RT: 6.15 min Scan# 418
 Delta R.T. -0.01 min
 Lab File: BG027249.D
 Acq: 6 Jun 2017 14:55

Tgt Ion	Resp	Lower	Upper
112	48173		
112	100		
64	64.3	61.8	92.6
63	32.3	37.2	55.8#

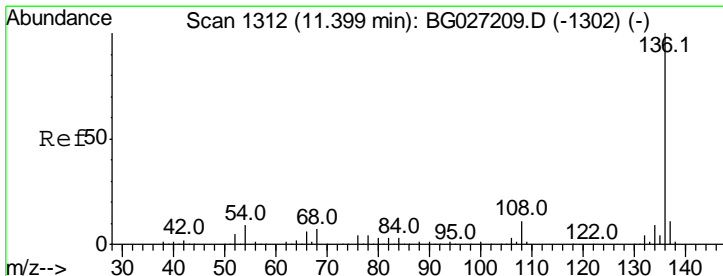
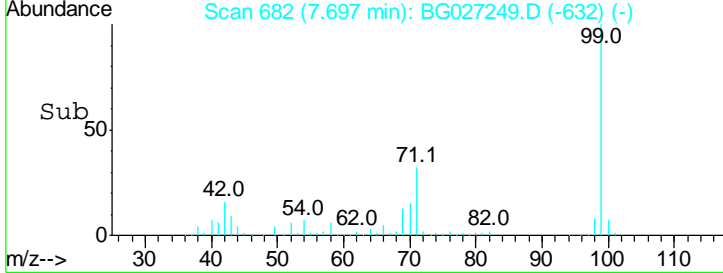
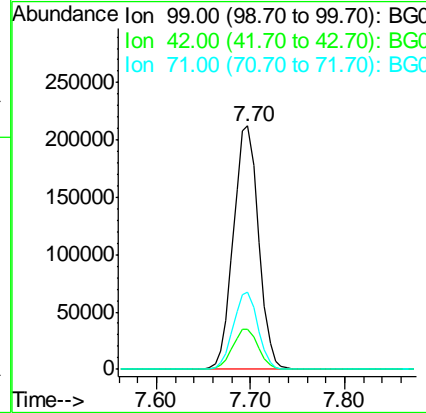
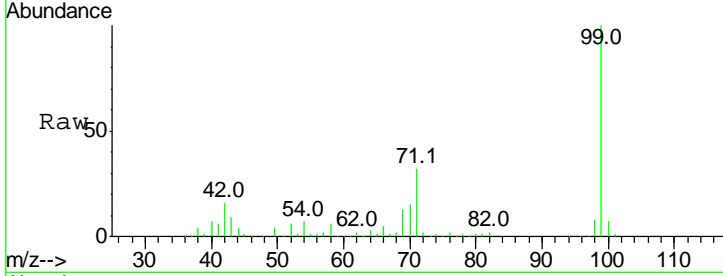




#7
 Phenol-d6
 Concen: 89.61 ng
 RT: 7.70 min Scan# 682
 Delta R.T. -0.01 min
 Lab File: BG027249.D
 Acq: 6 Jun 2017 14:55

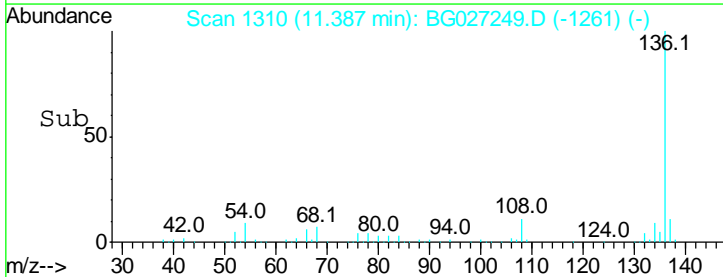
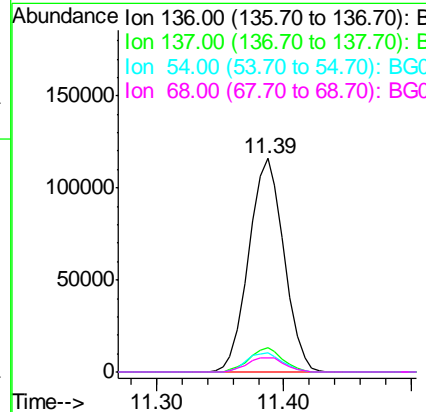
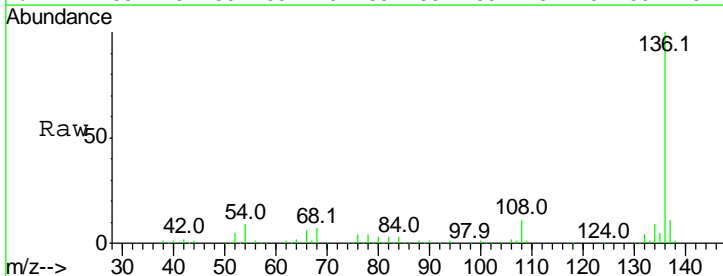
Instrument :
 BNA_G
 ClientSampled :
 COMP-1

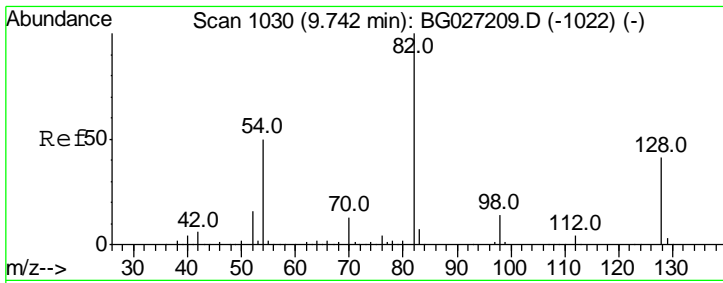
Tgt Ion	Resp	Lower	Upper
99	100		
42	16.4	20.5	30.7#
71	31.7	37.6	56.4#



#21
 Naphthalene-d8
 Concen: 20.00 ng
 RT: 11.39 min Scan# 1310
 Delta R.T. -0.01 min
 Lab File: BG027249.D
 Acq: 6 Jun 2017 14:55

Tgt Ion	Resp	Lower	Upper
136	100		
137	11.2	8.9	13.3
54	8.8	9.3	13.9#
68	6.8	5.1	7.7

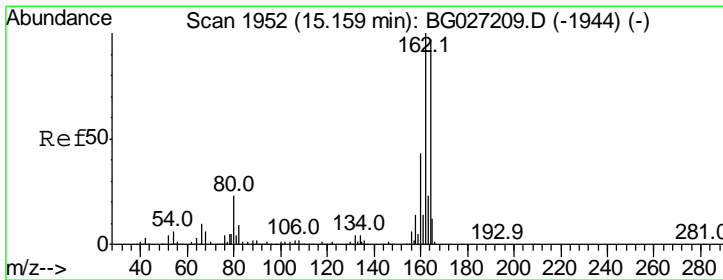
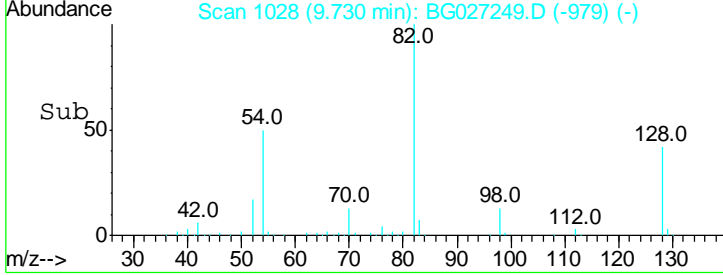
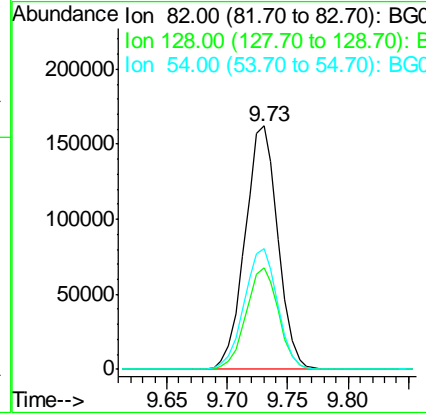
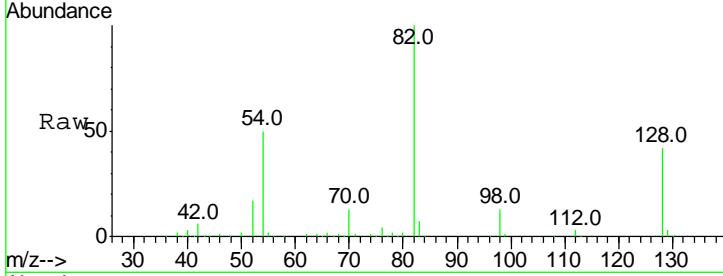




#23
 Nitrobenzene-d5
 Concen: 86.47 ng
 RT: 9.73 min Scan# 1028
 Delta R.T. -0.01 min
 Lab File: BG027249.D
 Acq: 6 Jun 2017 14:55

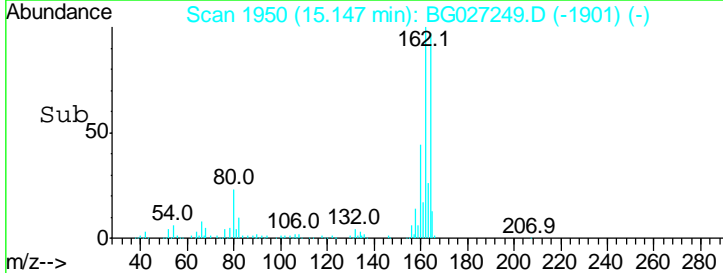
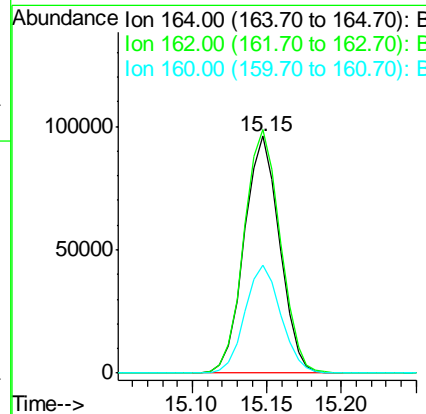
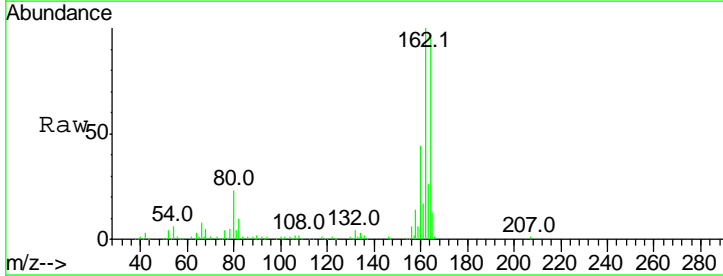
Instrument :
 BNA_G
ClientSampled :
 COMP-1

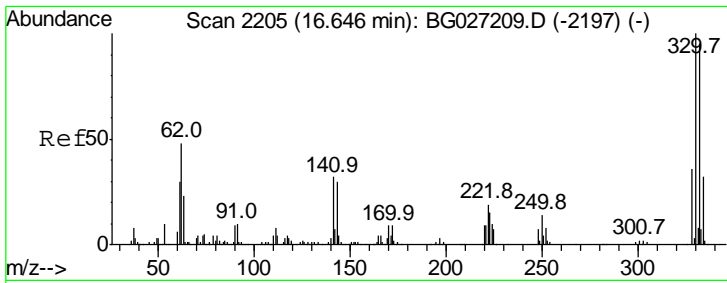
Tgt Ion	Resp	Lower	Upper
82	100		
128	41.9	26.4	39.6#
54	49.5	49.4	74.2



#38
 Acenaphthene-d10
 Concen: 20.00 ng
 RT: 15.15 min Scan# 1950
 Delta R.T. -0.01 min
 Lab File: BG027249.D
 Acq: 6 Jun 2017 14:55

Tgt Ion	Resp	Lower	Upper
164	100		
162	102.9	85.1	127.7
160	45.7	34.7	52.1

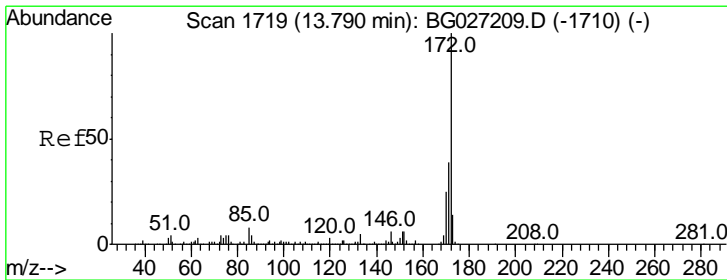
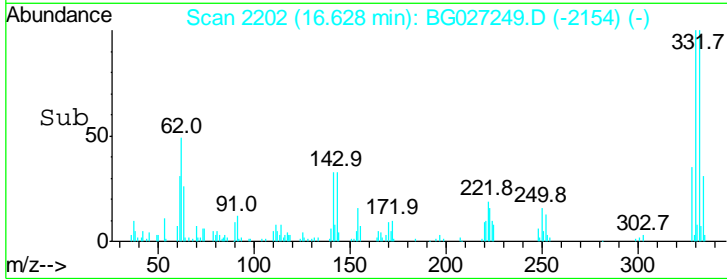
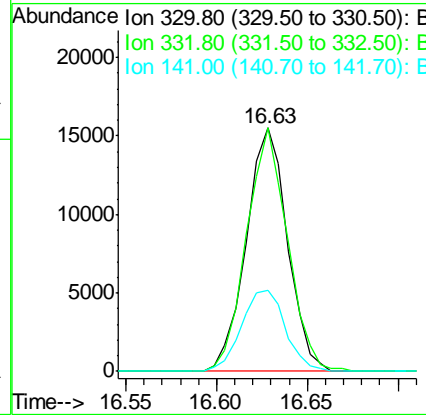
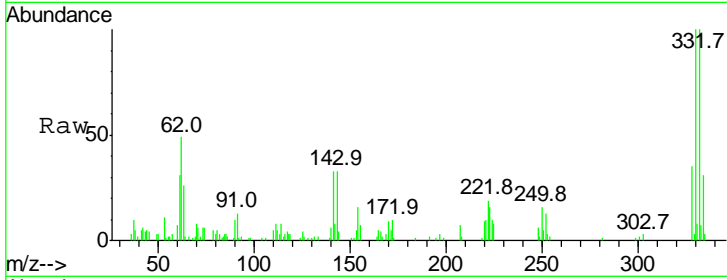




#41
 2,4,6-Tribromophenol
 Concen: 11.76 ng
 RT: 16.63 min Scan# 2202
 Delta R.T. -0.02 min
 Lab File: BG027249.D
 Acq: 6 Jun 2017 14:55

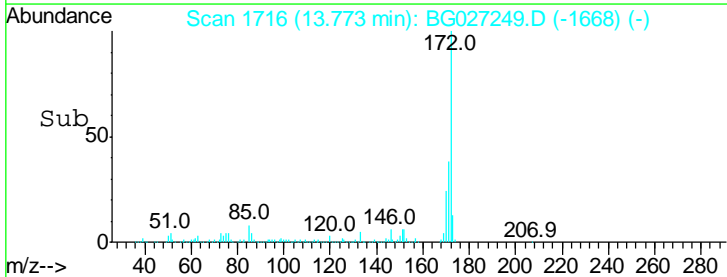
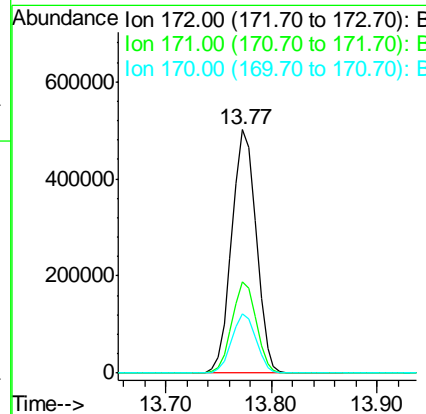
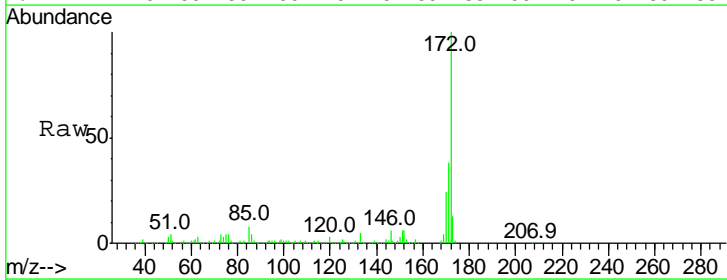
Instrument :
 BNA_G
 ClientSampled :
 COMP-1

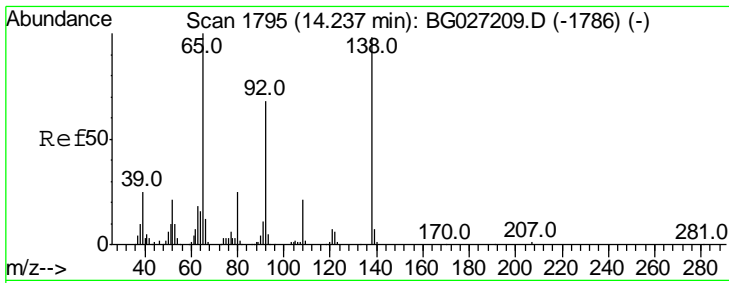
Tgt Ion	Resp	Lower	Upper
330	100		
332	99.4	77.3	115.9
141	35.8	32.1	48.1



#44
 2-Fluorobiphenyl
 Concen: 71.46 ng
 RT: 13.77 min Scan# 1716
 Delta R.T. -0.02 min
 Lab File: BG027249.D
 Acq: 6 Jun 2017 14:55

Tgt Ion	Resp	Lower	Upper
172	100		
171	37.6	32.2	48.2
170	24.2	21.8	32.6

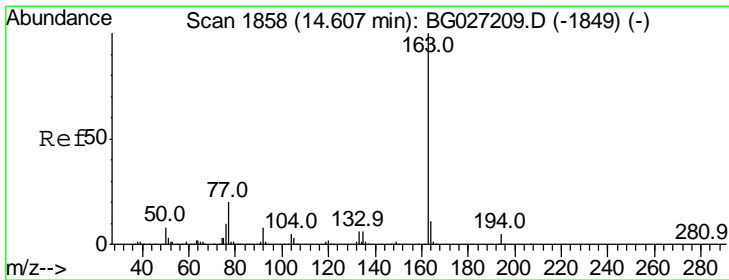
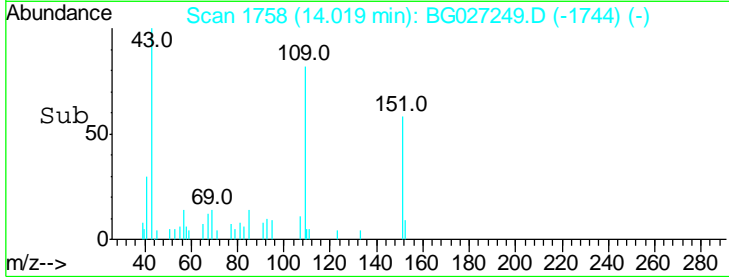
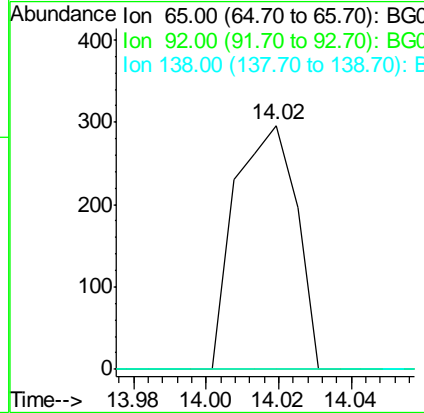
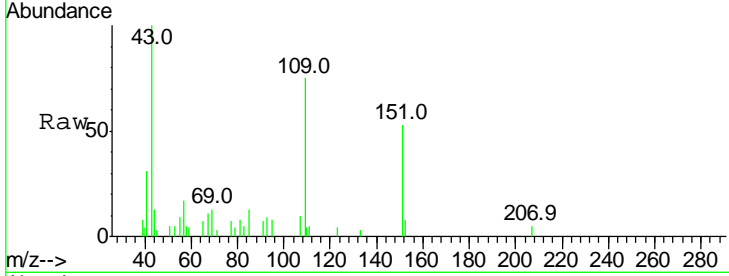




#47
 2-Nitroaniline
 Concen: 6.94 ng
 RT: 14.02 min Scan# 1758
 Delta R.T. -0.22 min
 Lab File: BG027249.D
 Acq: 6 Jun 2017 14:55

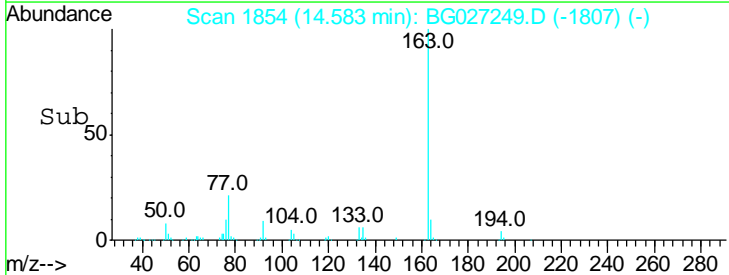
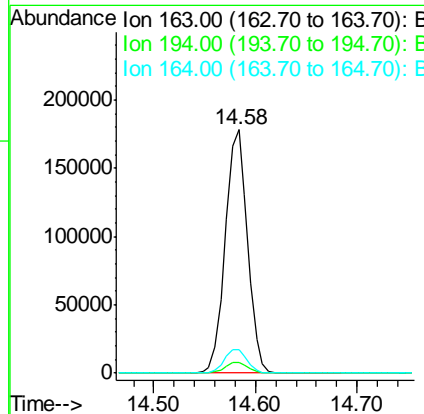
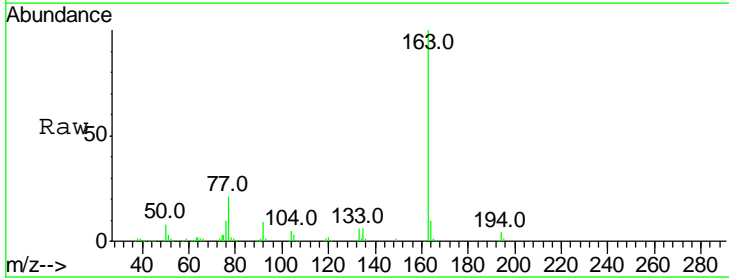
Instrument :
 BNA_G
 ClientSampled :
 COMP-1

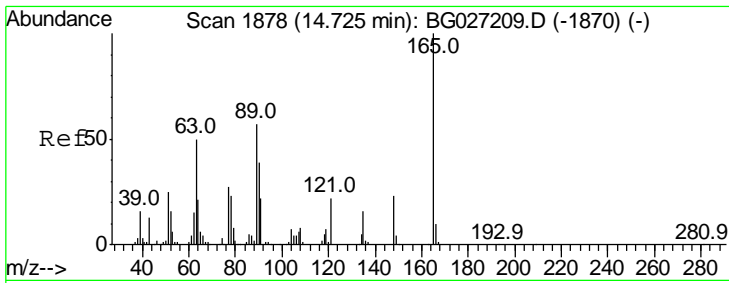
Tgt Ion	Ratio	Lower	Upper
65	100		
92	0.0	49.0	73.4#
138	0.0	58.6	87.8#



#49
 Dimethylphthalate
 Concen: 21.64 ng
 RT: 14.58 min Scan# 1854
 Delta R.T. -0.02 min
 Lab File: BG027249.D
 Acq: 6 Jun 2017 14:55

Tgt Ion	Ratio	Lower	Upper
163	100		
194	4.3	3.8	5.6
164	9.9	9.3	13.9

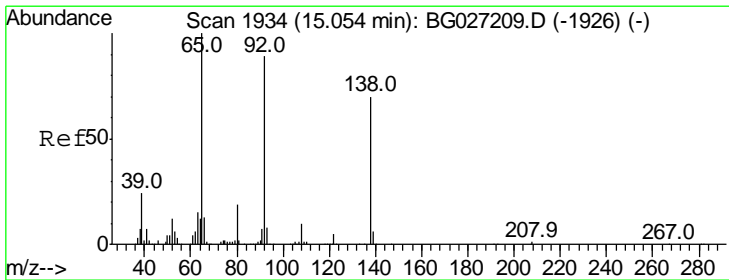
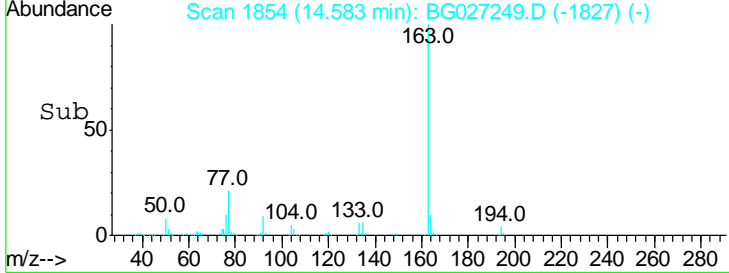
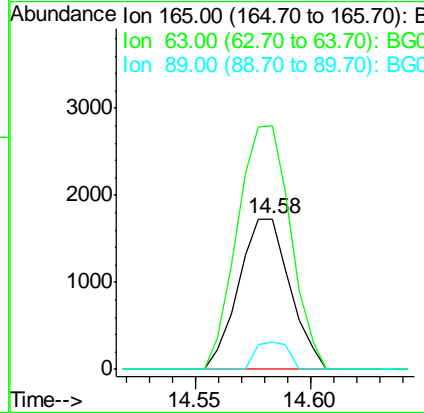
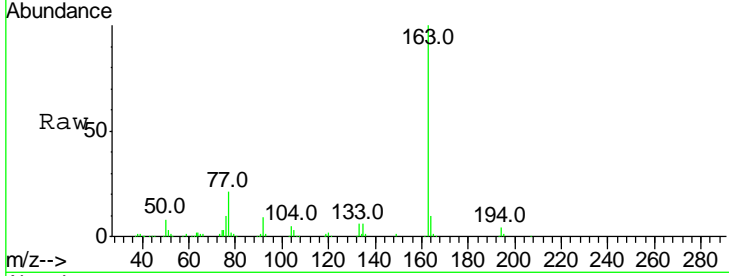




#50
 2,6-Dinitrotoluene
 Concen: 6.55 ng
 RT: 14.58 min Scan# 1854
 Delta R.T. -0.14 min
 Lab File: BG027249.D
 Acq: 6 Jun 2017 14:55

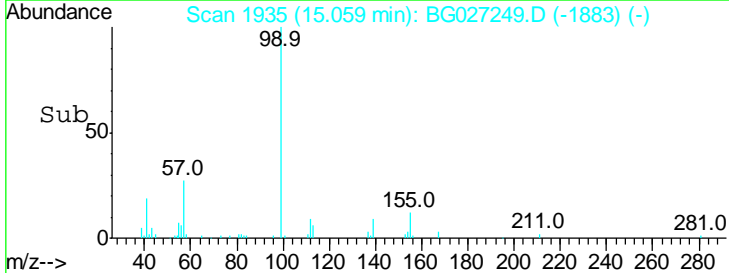
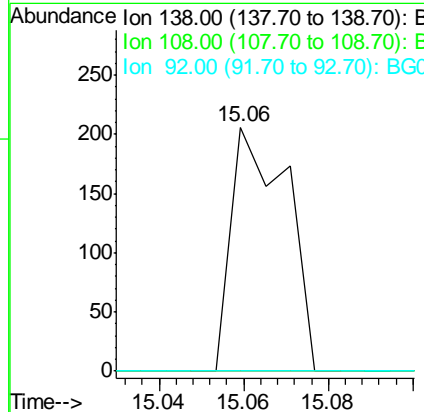
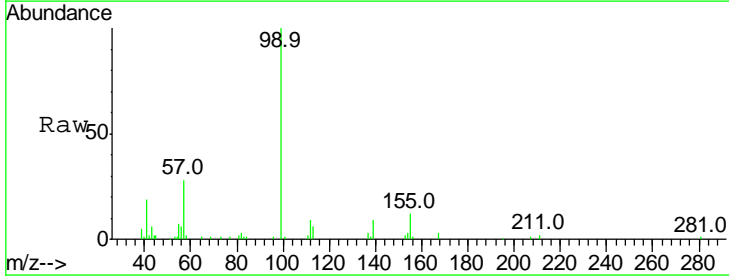
Instrument :
 BNA_G
 ClientSampled :
 COMP-1

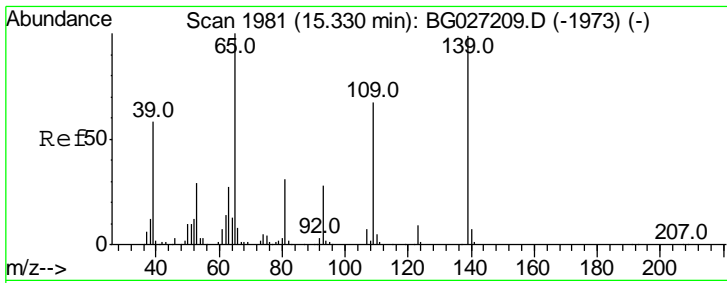
Tgt Ion	Resp	Lower	Upper
165	100		
63	161.6	63.9	95.9#
89	18.3	58.6	88.0#



#52
 3-Nitroaniline
 Concen: 5.78 ng
 RT: 15.06 min Scan# 1935
 Delta R.T. 0.01 min
 Lab File: BG027249.D
 Acq: 6 Jun 2017 14:55

Tgt Ion	Resp	Lower	Upper
138	100		
108	0.0	10.9	16.3#
92	0.0	115.3	172.9#

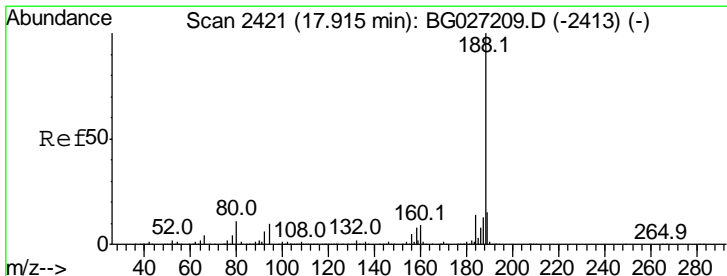
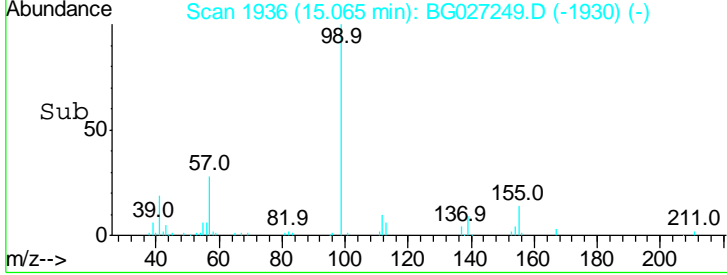
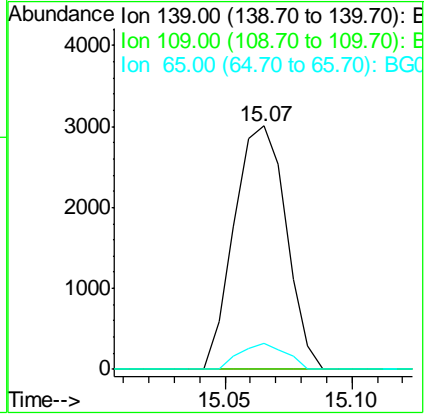
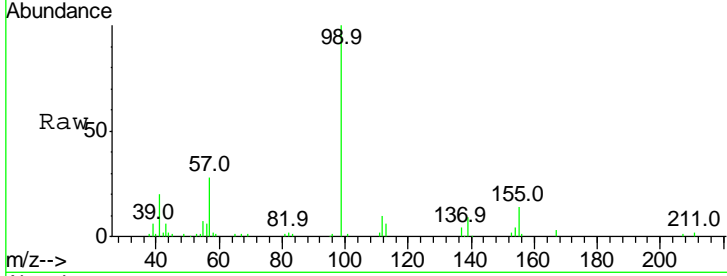




#55
 4-Nitrophenol
 Concen: 7.80 ng
 RT: 15.07 min Scan# 1936
 Delta R.T. -0.26 min
 Lab File: BG027249.D
 Acq: 6 Jun 2017 14:55

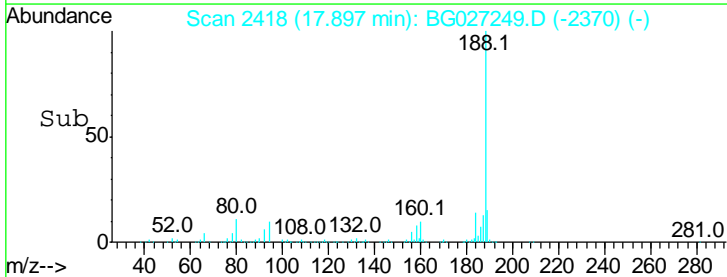
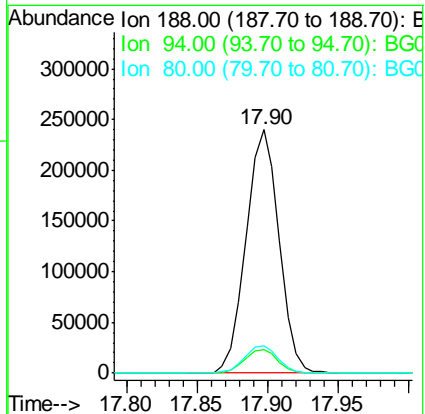
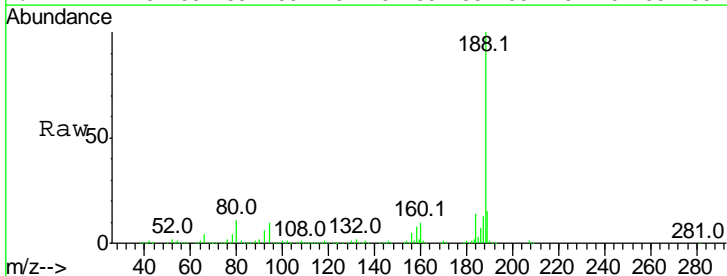
Instrument :
 BNA_G
 ClientSampled :
 COMP-1

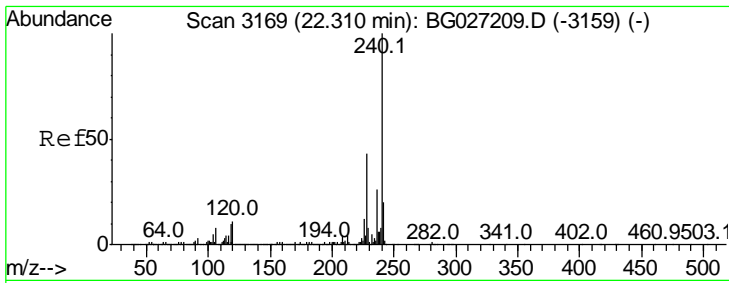
Tgt Ion	Resp	Lower	Upper
139	100		
109	0.0	101.2	141.2#
65	10.8	135.3	175.3#



#63
 Phenanthrene-d10
 Concen: 20.00 ng
 RT: 17.90 min Scan# 2418
 Delta R.T. -0.02 min
 Lab File: BG027249.D
 Acq: 6 Jun 2017 14:55

Tgt Ion	Resp	Lower	Upper
188	100		
94	9.5	5.8	8.8#
80	11.0	7.5	11.3

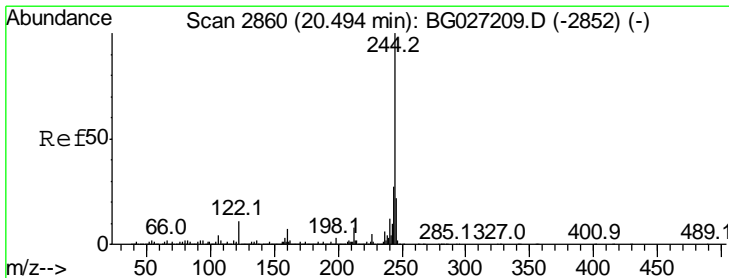
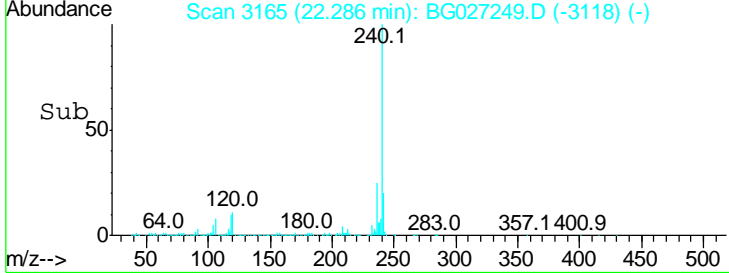
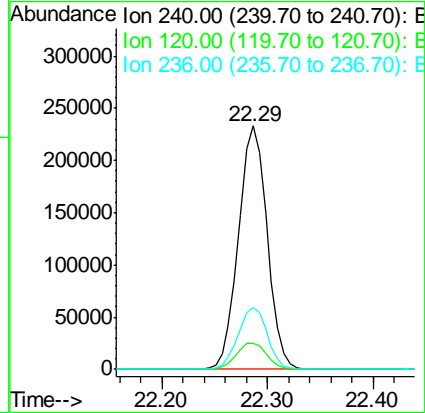
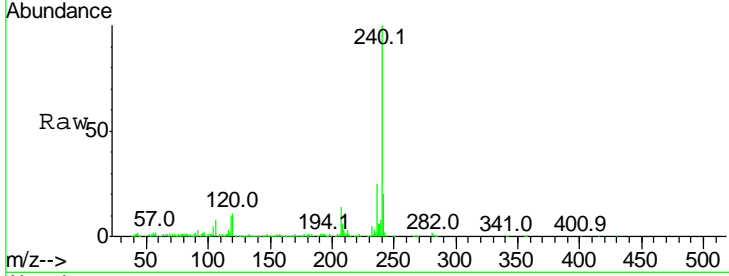




#75
 Chrysene-d12
 Concen: 20.00 ng
 RT: 22.29 min Scan# 3165
 Delta R.T. -0.02 min
 Lab File: BG027249.D
 Acq: 6 Jun 2017 14:55

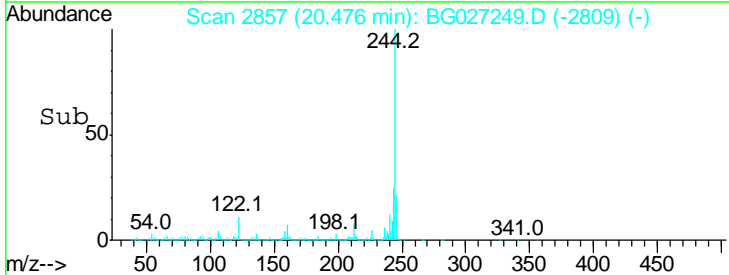
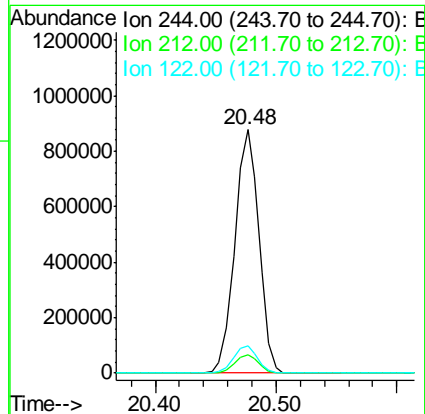
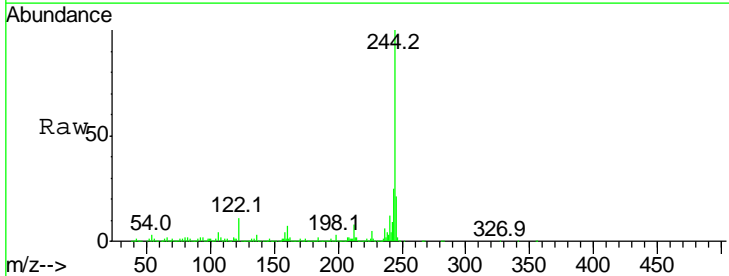
Instrument :
 BNA_G
 ClientSampled :
 COMP-1

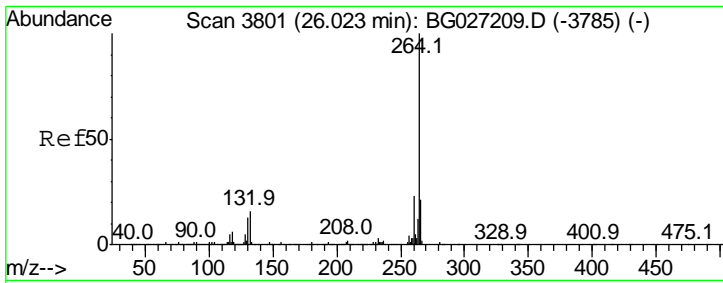
Tgt Ion	Ratio	Lower	Upper
240	100		
120	10.7	5.7	8.5#
236	25.3	22.2	33.4



#78
 Terphenyl-d14
 Concen: 71.14 ng
 RT: 20.48 min Scan# 2857
 Delta R.T. -0.02 min
 Lab File: BG027249.D
 Acq: 6 Jun 2017 14:55

Tgt Ion	Ratio	Lower	Upper
244	100		
212	7.6	10.0	15.0#
122	11.0	8.6	12.8





#86
 Perylene-d12
 Concen: 20.00 ng
 RT: 25.98 min Scan# 3794
 Delta R.T. -0.04 min
 Lab File: BG027249.D
 Acq: 6 Jun 2017 14:55

Instrument :
 BNA_G
 ClientSampled :
 COMP-1

Tot Ion: 264 Resp: 421592

Ion	Ratio	Lower	Upper
264	100		
260	24.1	21.8	32.8
265	22.6	18.2	27.4

