

Data Path : Z:\svoasrv\HPCHEM1\BNA_G\Data\BG060822\
 Data File : BG053847.D
 Acq On : 8 Jun 2022 10:52
 Operator : CG/JU
 Sample : PB145399BL
 Misc :
 ALS Vial : 3 Sample Multiplier: 1

Instrument :
 BNA_G
 ClientSampleId :
 PB145399BL

Integration Parameters: rteint.p
 Integrator: RTE
 Smoothing : ON Filtering: 5
 Sampling : 1 Min Area: 3 % of largest Peak
 Start Thrs: 0.2 Max Peaks: 100
 Stop Thrs : 0 Peak Location: TOP

If leading or trailing edge < 100 prefer < Baseline drop else tangent >
 Peak separation: 5

Method : Z:\svoasrv\HPCHEM1\BNA_G\Methods\8270-BG060222.M
 Title : ASP BNA STANDARDS FOR 5 POINT CALIBRATION

Signal : TIC: BG053847.D\data.ms

peak #	R.T. min	first scan	max scan	last scan	PK TY	peak height	corr. area	corr. % max.	% of total
1	5.655	379	386	397	rBV	407428	686249	29.58%	8.341%
2	7.241	648	656	665	rBV	403740	711402	30.67%	8.647%
3	8.093	794	801	808	rBV	76930	136207	5.87%	1.656%
4	9.251	990	998	1009	rBV	240461	450331	19.41%	5.474%
5	10.902	1271	1279	1286	rBV	101387	192036	8.28%	2.334%
6	13.340	1685	1694	1702	rBV	706689	1146653	49.43%	13.937%
7	14.709	1920	1927	1935	rBV	169588	281026	12.12%	3.416%
8	16.196	2173	2180	2195	rBV	528723	856160	36.91%	10.406%
9	17.453	2388	2394	2406	rVB	245586	386576	16.67%	4.699%
10	20.062	2832	2838	2849	rBV	1725514	2319593	100.00%	28.194%
11	21.730	3114	3122	3130	rBV	308356	528230	22.77%	6.421%
12	24.991	3666	3677	3699	rVB2	169596	532776	22.97%	6.476%

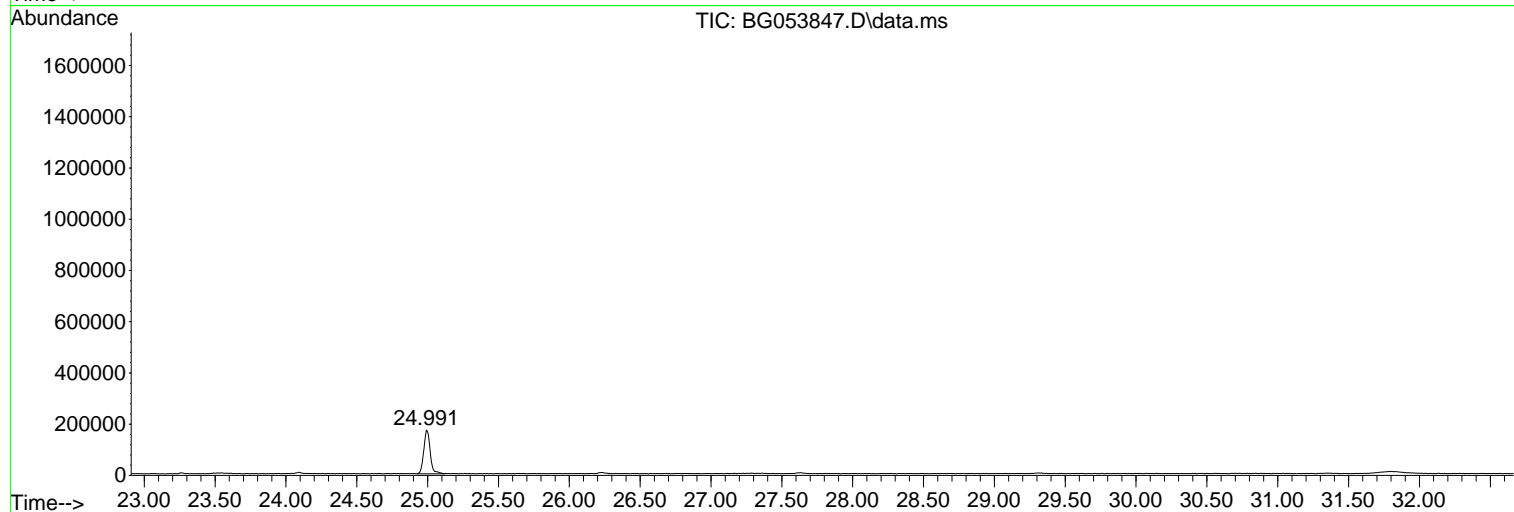
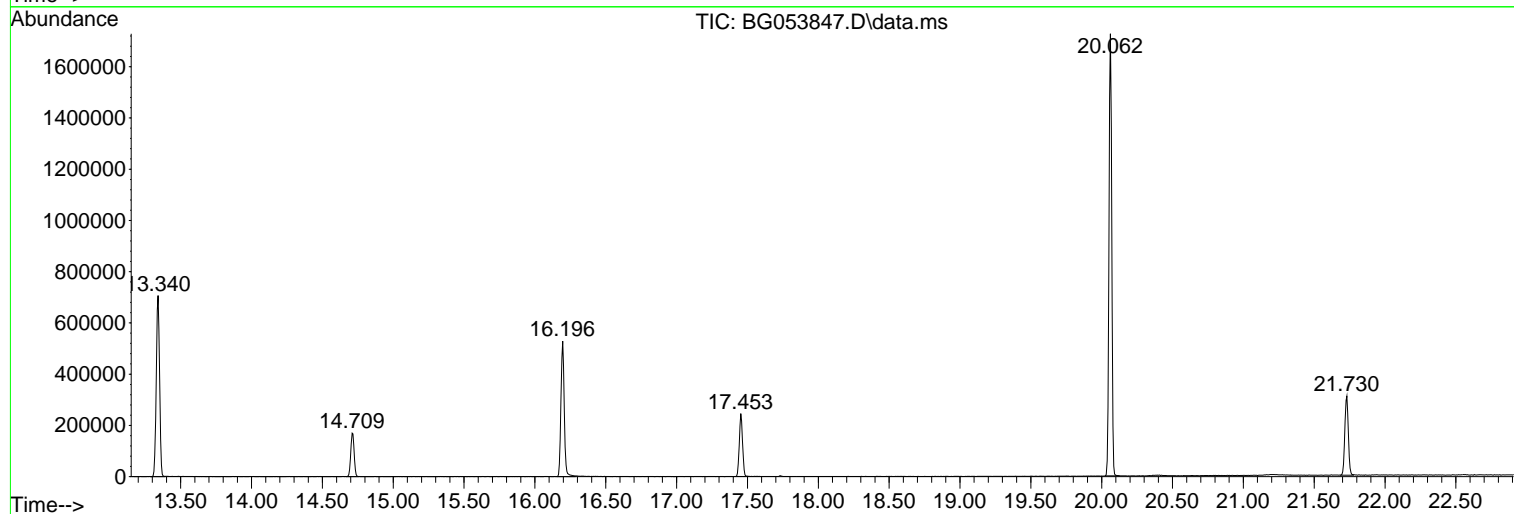
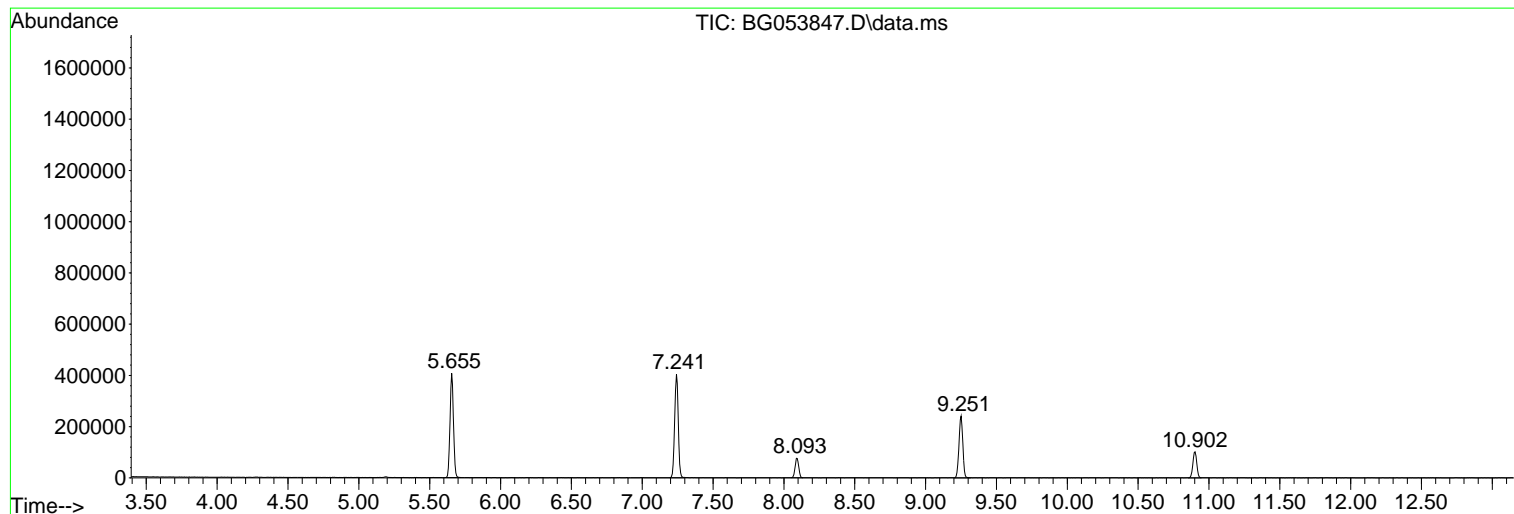
Sum of corrected areas: 8227239

Data Path : Z:\svoasrv\HPCHEM1\BNA_G\Data\BG060822\
Data File : BG053847.D
Acq On : 8 Jun 2022 10:52
Operator : CG/JU
Sample : PB145399BL
Misc :
ALS Vial : 3 Sample Multiplier: 1

Instrument :
BNA_G
ClientSampleId :
PB145399BL

Quant Method : Z:\svoasrv\HPCHEM1\BNA_G\Methods\8270-BG060222.M
Quant Title : ASP BNA STANDARDS FOR 5 POINT CALIBRATION

TIC Library : C:\Database\NIST20.L
TIC Integration Parameters: LSCINT.P



Library Search Compound Report

Data Path : Z:\svoasrv\HPCHEM1\BNA_G\Data\BG060822\
Data File : BG053847.D
Acq On : 8 Jun 2022 10:52
Operator : CG/JU
Sample : PB145399BL
Misc :
ALS Vial : 3 Sample Multiplier: 1

Instrument :
BNA_G
ClientSampleId :
PB145399BL

Quant Method : Z:\svoasrv\HPCHEM1\BNA_G\Methods\8270-BG060222.M
Quant Title : ASP BNA STANDARDS FOR 5 POINT CALIBRATION

TIC Library : C:\Database\NIST20.L
TIC Integration Parameters: LSCINT.P

No Library Search Compounds Detected

Data Path : Z:\svoasrv\HPCHEM1\BNA_G\Data\BG060822\
Data File : BG053847.D
Acq On : 8 Jun 2022 10:52
Operator : CG/JU
Sample : PB145399BL
Misc :
ALS Vial : 3 Sample Multiplier: 1

Instrument :
BNA_G
ClientSampleId :
PB145399BL

Quant Method : Z:\svoasrv\HPCHEM1\BNA_G\Methods\8270-BG060222.M
Quant Title : ASP BNA STANDARDS FOR 5 POINT CALIBRATION

TIC Library : C:\Database\NIST20.L
TIC Integration Parameters: LSCINT.P

TIC Top Hit name	RT	EstConc	Units	Response	#	RT	Resp	Conc
------------------	----	---------	-------	----------	---	----	------	------
