

Data Path : Z:\HPCHEM1\BNA G\DATA\BG060916\
 Data File : BG022260.D
 Acq On : 9 Jun 2016 9:15
 Operator : UM/SJ
 Sample : H3402-06 2X
 Misc :
 ALS Vial : 7 Sample Multiplier: 1

Instrument :
 BNA_G
 ClientSampleId :
 SS-41

Quant Time: Jun 09 17:14:08 2016
 Quant Method : Z:\HPCHEM1\BNA G\METHODS\8270-BG060616.M
 Quant Title : ASP BNA STANDARDS FOR 5 POINT CALIBRATION
 QLast Update : Mon Jun 06 16:12:45 2016
 Response via : Initial Calibration

Internal Standards	R.T.	QIon	Response	Conc	Units	Dev(Min)
1) 1,4-Dichlorobenzene-d4	8.11	152	40102	20.00	ng	0.00
21) Naphthalene-d8	10.93	136	207928	20.00	ng	0.00
38) Acenaphthene-d10	14.75	164	122272	20.00	ng	0.00
63) Phenanthrene-d10	17.49	188	235954	20.00	ng	0.00
75) Chrysene-d12	21.76	240	210510	20.00	ng	0.00
86) Perylene-d12	25.06	264	201552	20.00	ng	0.00

System Monitoring Compounds

5) 2-Fluorophenol	5.66	112	167756	80.88	ng	0.00
7) Phenol-d6	7.27	99	254727	78.11	ng	0.00
23) Nitrobenzene-d5	9.29	82	133722	44.84	ng	0.00
41) 2,4,6-Tribromophenol	16.23	330	80182	58.04	ng	0.00
44) 2-Fluorobiphenyl	13.37	172	385346	48.03	ng	0.00
78) Terphenyl-d14	20.08	244	402178	45.36	ng	0.00

Target Compounds

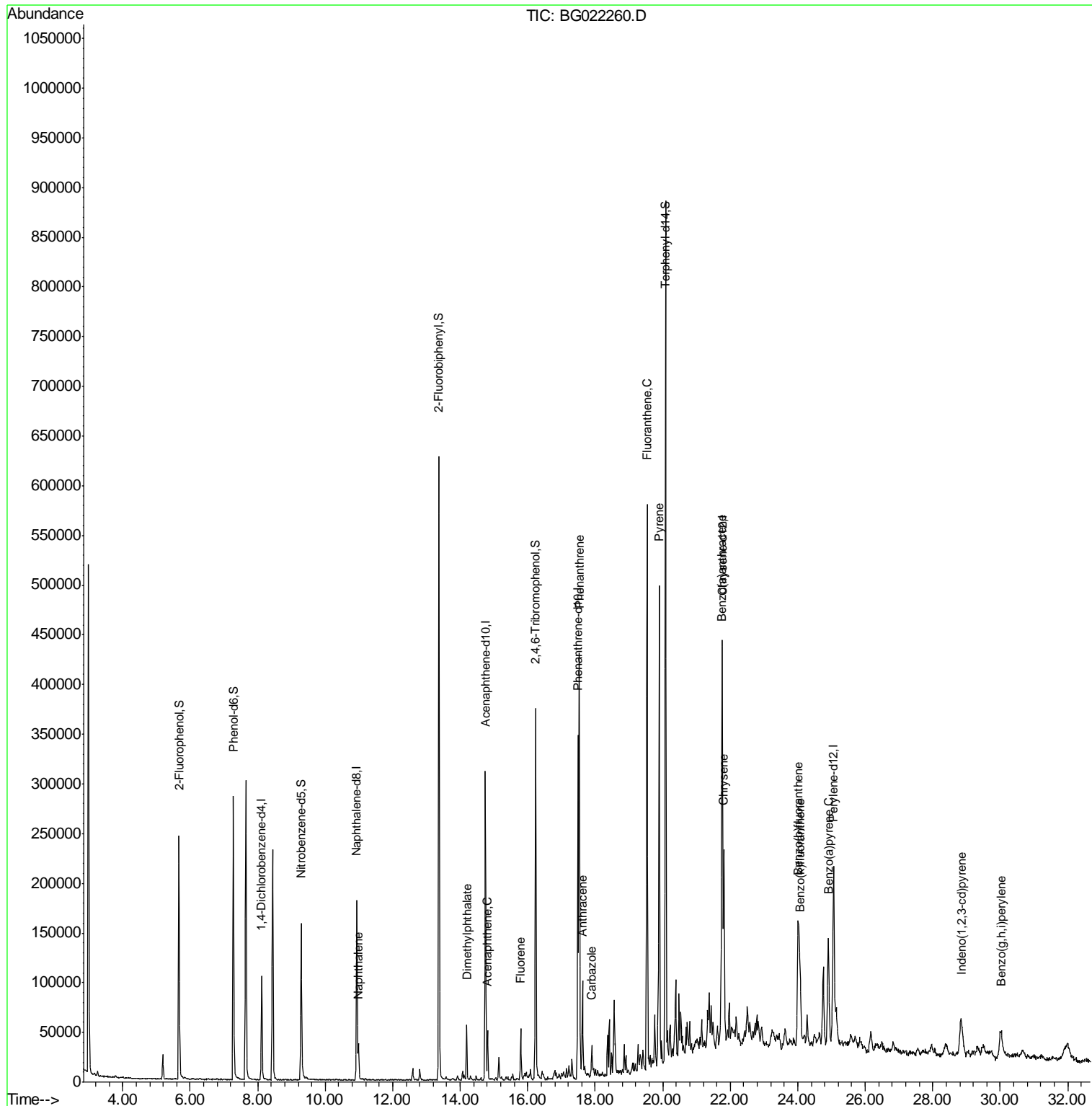
Target Compounds	R.T.	QIon	Response	Conc	Units	Qvalue
31) Naphthalene	10.99	128	35595	3.43	ng	96
49) Dimethylphthalate	14.19	163	46823	4.62	ng	97
51) Acenaphthene	14.81	154	20623	2.78	ng	95
57) Fluorene	15.79	166	28143	2.82	ng	99
70) Phenanthrene	17.53	178	292788	22.85	ng	99
71) Anthracene	17.62	178	71590	5.63	ng	97
72) Carbazole	17.90	167	30935m	2.57	ng	
74) Fluoranthene	19.54	202	371767	25.23	ng	97
77) Pyrene	19.89	202	320840	24.52	ng	100
80) Benzo(a)anthracene	21.75	228	160672	13.61	ng	99
82) Chrysene	21.81	228	134285	11.69	ng	96
85) Indeno(1,2,3-cd)pyrene	28.84	276	71694m	5.56	ng	
87) Benzo(b)fluoranthene	24.02	252	171906m	14.62	ng	
88) Benzo(k)fluoranthene	24.07	252	59918m	5.18	ng	
89) Benzo(a)pyrene	24.91	252	122663	10.91	ng	97
91) Benzo(a,h,i)perylene	30.03	276	75832m	6.89	ng	

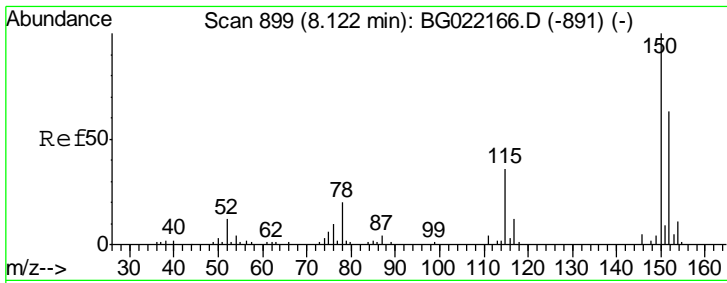
(#) = qualifier out of range (m) = manual integration (+) = signals summed

Data Path : Z:\HPCHEM1\BNA G\DATA\BG060916\
 Data File : BG022260.D
 Acq On : 9 Jun 2016 9:15
 Operator : UM/SJ
 Sample : H3402-06 2X
 Misc :
 ALS Vial : 7 Sample Multiplier: 1

Instrument :
 BNA_G
 Client Sampled :
 SS-41

Quant Time: Jun 09 17:14:08 2016
 Quant Method : Z:\HPCHEM1\BNA G\METHODS\8270-BG060616.M
 Quant Title : ASP BNA STANDARDS FOR 5 POINT CALIBRATION
 QLast Update : Mon Jun 06 16:12:45 2016
 Response via : Initial Calibration

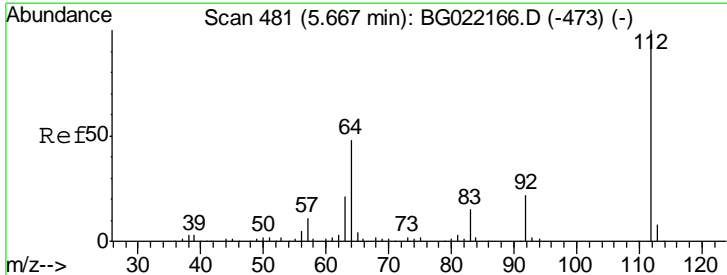
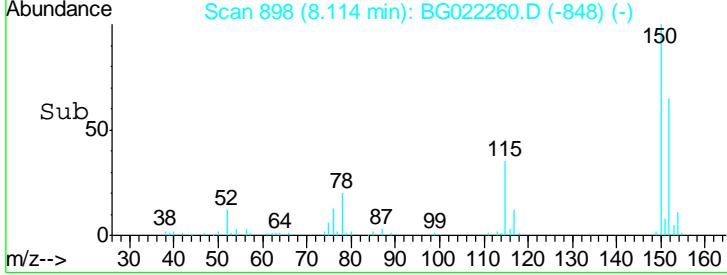
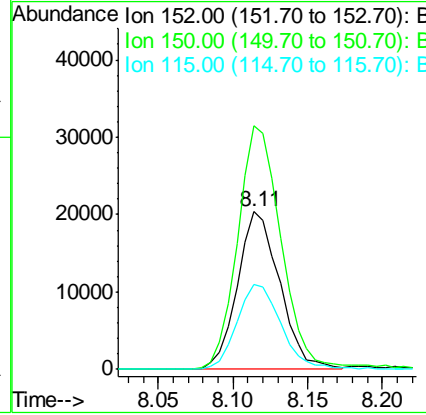
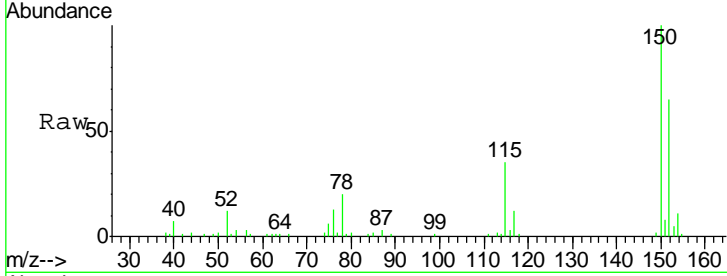




#1
 1,4-Dichlorobenzene-d4
 Concen: 20.00 ng
 RT: 8.11 min Scan# 898
 Delta R.T. -0.01 min
 Lab File: BG022260.D
 Acq: 9 Jun 2016 9:15

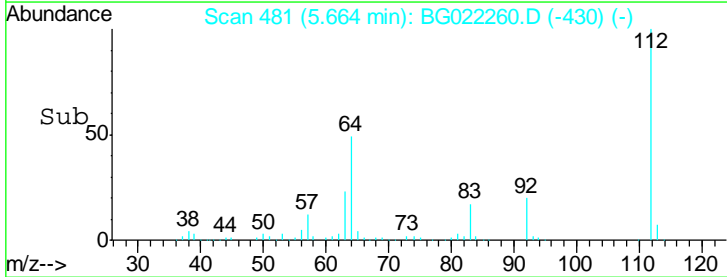
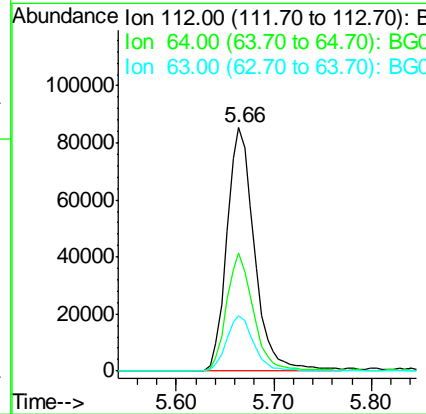
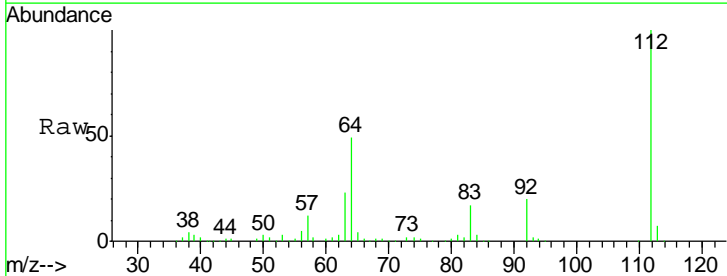
Instrument :
 BNA_G
ClientSampled :
 SS-41

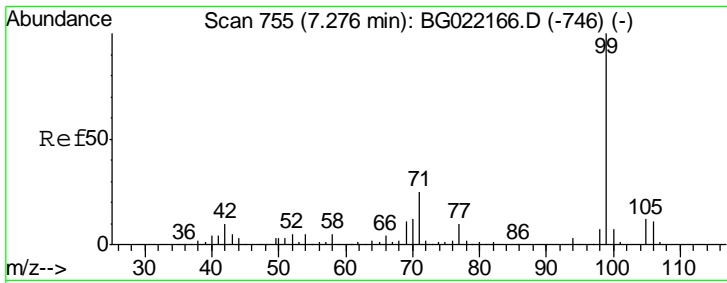
Tgt Ion	Resp	Lower	Upper
152	40102		
150	154.3	130.1	195.1
115	53.5	62.2	93.2#



#5
 2-Fluorophenol
 Concen: 80.88 ng
 RT: 5.66 min Scan# 481
 Delta R.T. -0.00 min
 Lab File: BG022260.D
 Acq: 9 Jun 2016 9:15

Tgt Ion	Resp	Lower	Upper
112	167756		
64	48.6	51.1	76.7#
63	23.0	24.6	37.0#

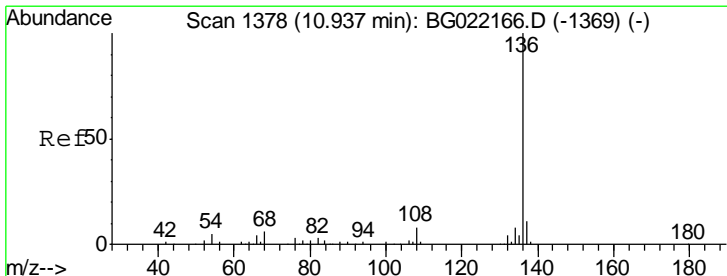
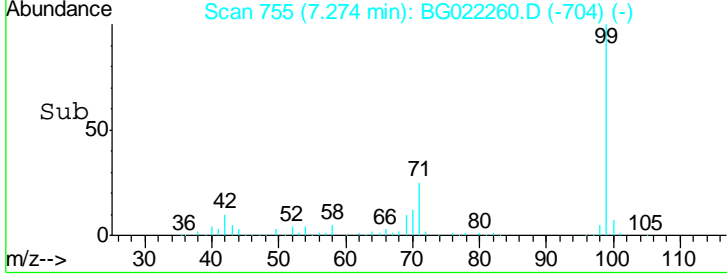
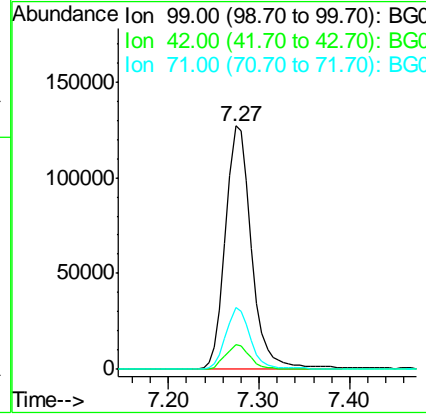
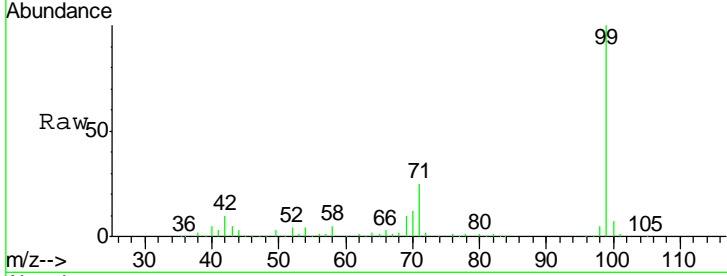




#7
 Phenol-d6
 Concen: 78.11 ng
 RT: 7.27 min Scan# 755
 Delta R.T. -0.00 min
 Lab File: BG022260.D
 Acq: 9 Jun 2016 9:15

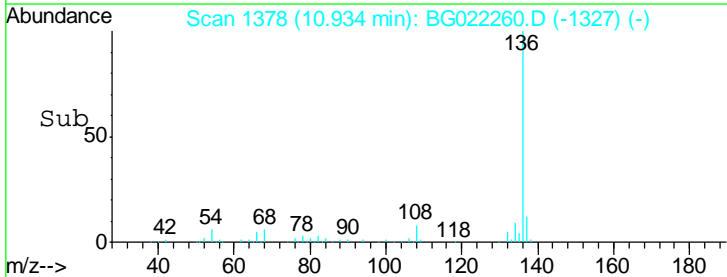
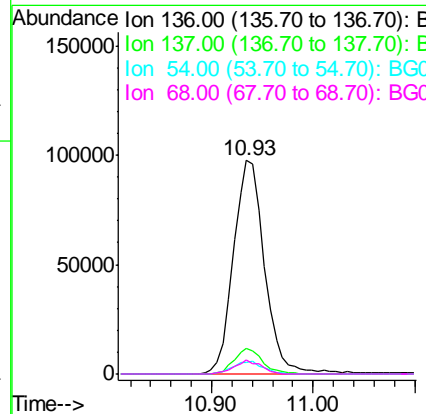
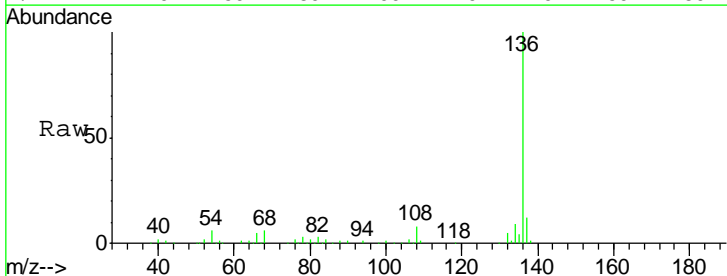
Instrument :
 BNA_G
ClientSampled :
 SS-41

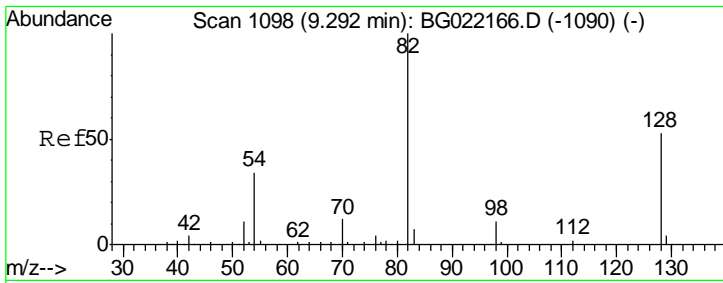
Tgt Ion	Resp	Lower	Upper
99	100		
42	10.0	16.4	24.6#
71	25.5	25.0	37.4



#21
 Naphthalene-d8
 Concen: 20.00 ng
 RT: 10.93 min Scan# 1378
 Delta R.T. -0.00 min
 Lab File: BG022260.D
 Acq: 9 Jun 2016 9:15

Tgt Ion	Resp	Lower	Upper
136	100		
137	11.8	9.0	13.4
54	5.5	9.6	14.4#
68	6.4	6.4	9.6

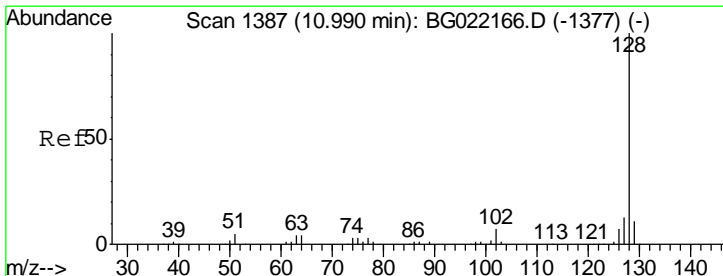
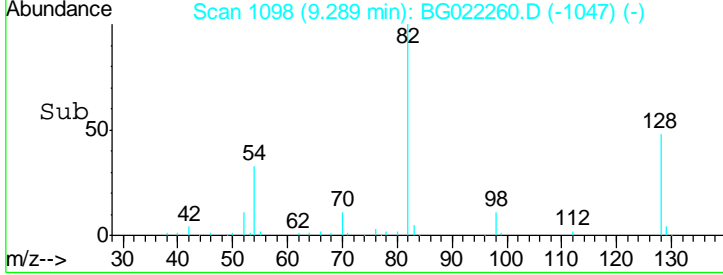
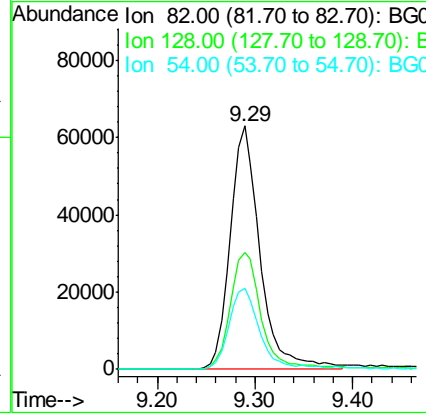
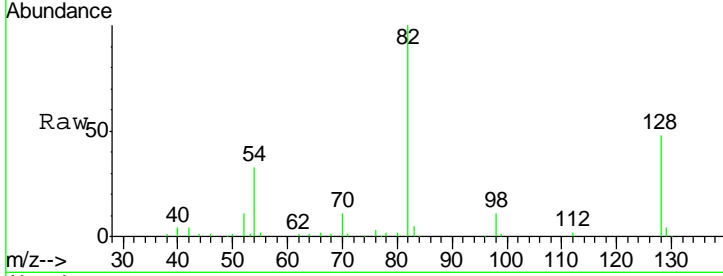




#23
 Nitrobenzene-d5
 Concen: 44.84 ng
 RT: 9.29 min Scan# 1098
 Delta R.T. -0.00 min
 Lab File: BG022260.D
 Acq: 9 Jun 2016 9:15

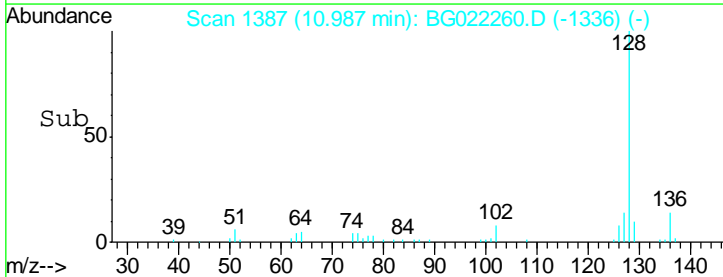
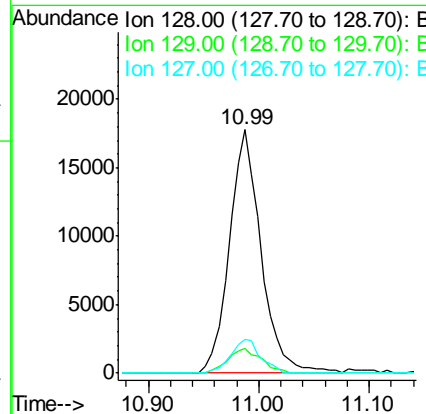
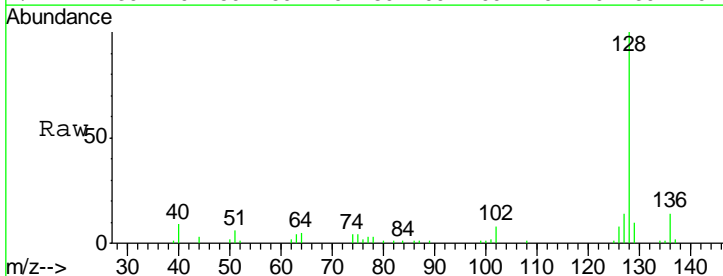
Instrument :
 BNA_G
ClientSampled :
 SS-41

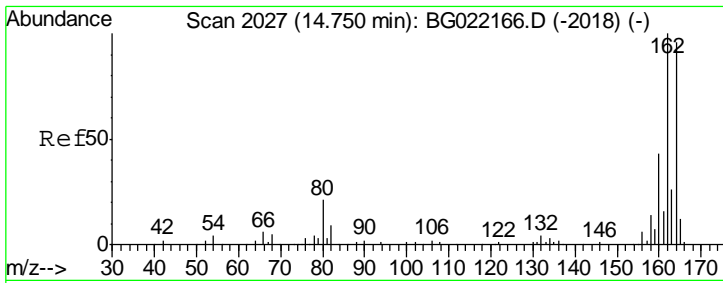
Tgt Ion	Resp	Lower	Upper
82	133722		
128	48.0	33.4	50.0
54	33.5	46.1	69.1#



#31
 Naphthalene
 Concen: 3.43 ng
 RT: 10.99 min Scan# 1387
 Delta R.T. -0.00 min
 Lab File: BG022260.D
 Acq: 9 Jun 2016 9:15

Tgt Ion	Resp	Lower	Upper
128	35595		
129	10.3	7.0	10.6
127	14.0	10.1	15.1

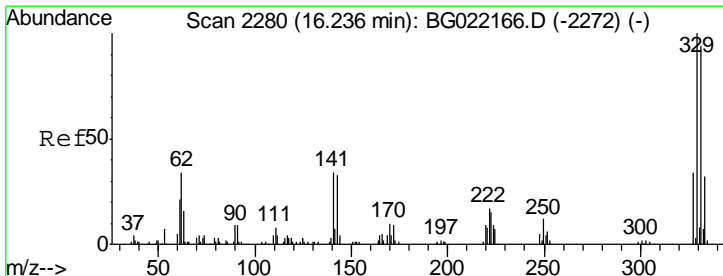
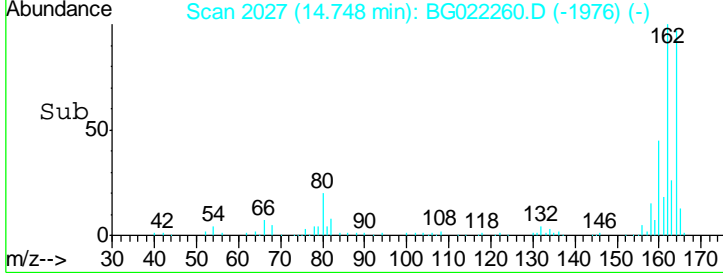
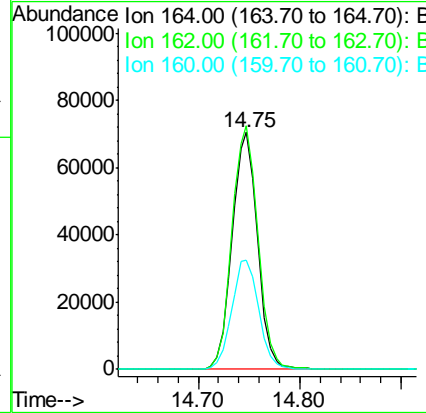
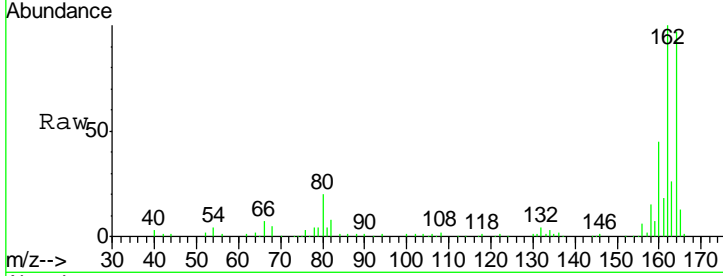




#38
 Acenaphthene-d10
 Concen: 20.00 ng
 RT: 14.75 min Scan# 2027
 Delta R.T. -0.00 min
 Lab File: BG022260.D
 Acq: 9 Jun 2016 9:15

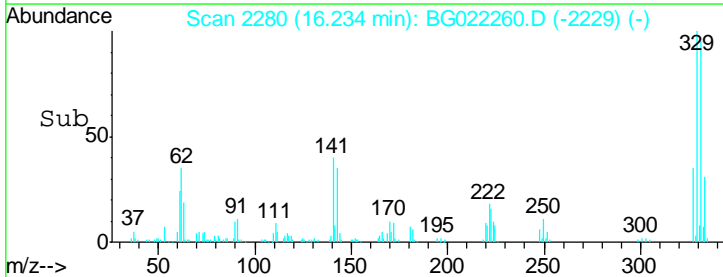
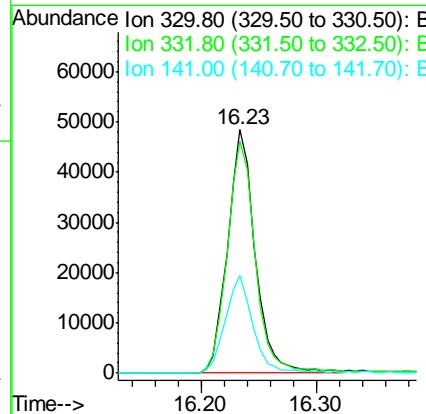
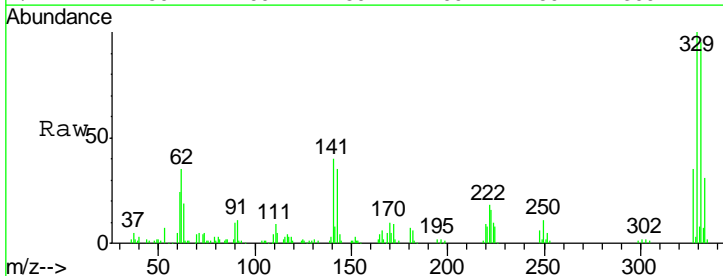
Instrument :
 BNA_G
 ClientSampled :
 SS-41

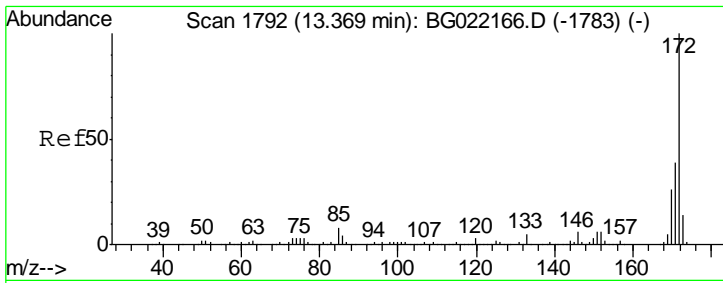
Tgt Ion	Resp	Lower	Upper
164	100		
162	102.7	78.0	117.0
160	45.9	32.9	49.3



#41
 2,4,6-Tribromophenol
 Concen: 58.04 ng
 RT: 16.23 min Scan# 2280
 Delta R.T. -0.00 min
 Lab File: BG022260.D
 Acq: 9 Jun 2016 9:15

Tgt Ion	Resp	Lower	Upper
330	100		
332	97.7	78.0	117.0
141	40.0	33.8	50.8

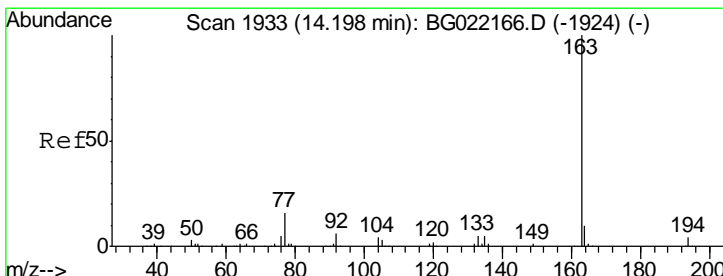
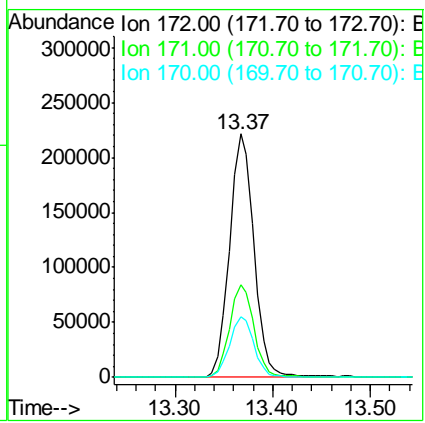
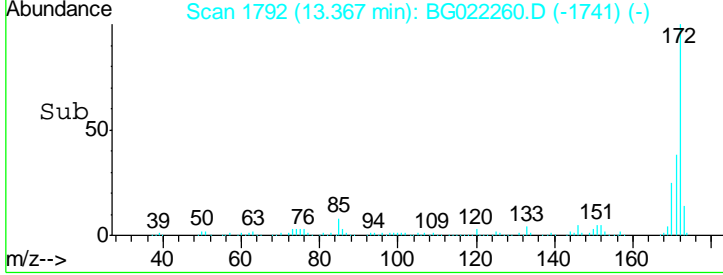
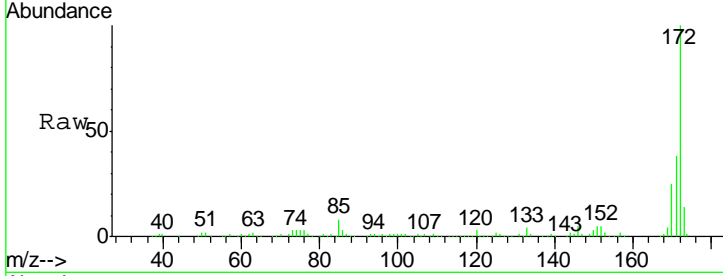




#44
 2-Fluorobiphenyl
 Concen: 48.03 ng
 RT: 13.37 min Scan# 1792
 Delta R.T. -0.00 min
 Lab File: BG022260.D
 Acq: 9 Jun 2016 9:15

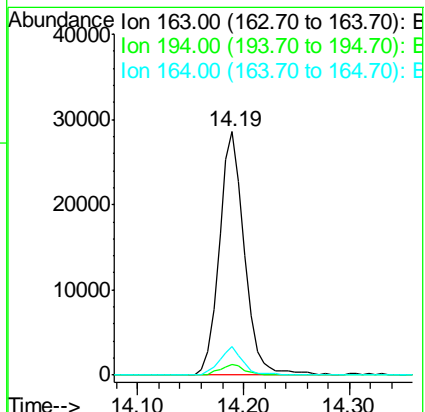
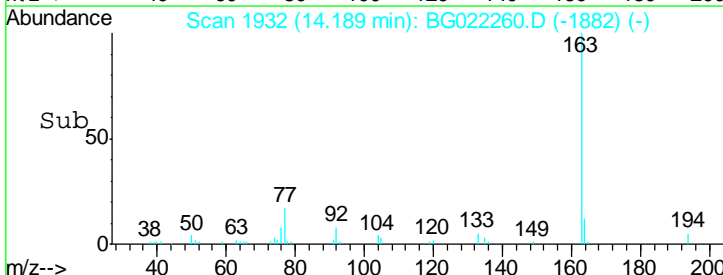
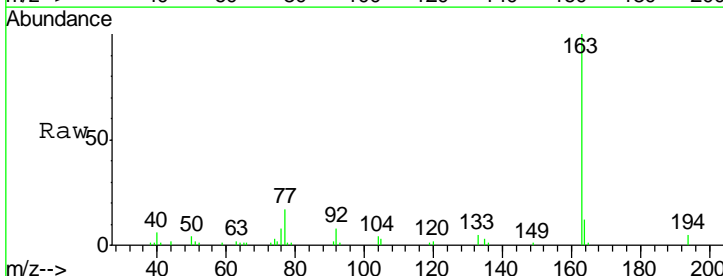
Instrument :
 BNA_G
 ClientSampled :
 SS-41

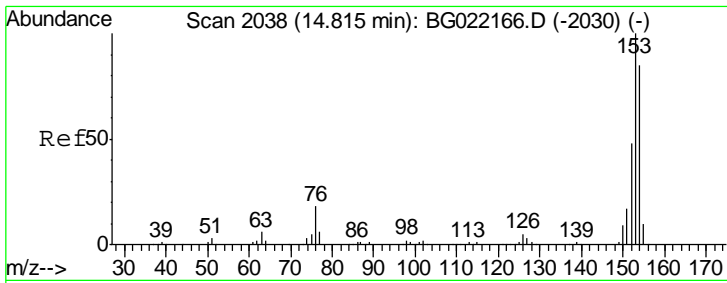
Tgt Ion	Resp	Lower	Upper
172	100		
171	38.1	27.8	41.6
170	24.7	19.6	29.4



#49
 Dimethylphthalate
 Concen: 4.62 ng
 RT: 14.19 min Scan# 1932
 Delta R.T. -0.01 min
 Lab File: BG022260.D
 Acq: 9 Jun 2016 9:15

Tgt Ion	Resp	Lower	Upper
163	100		
194	4.5	3.0	4.6
164	11.6	8.1	12.1

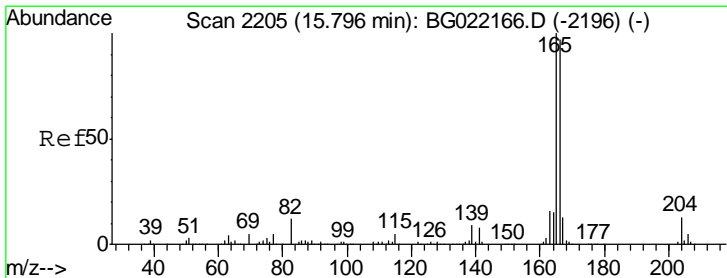
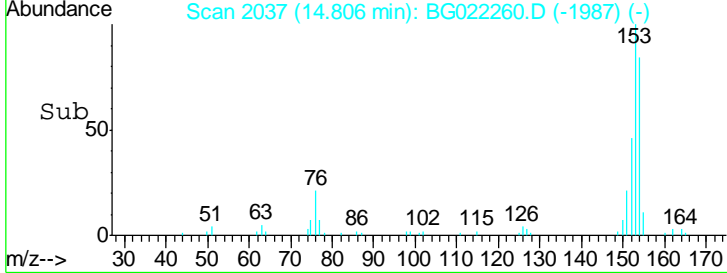
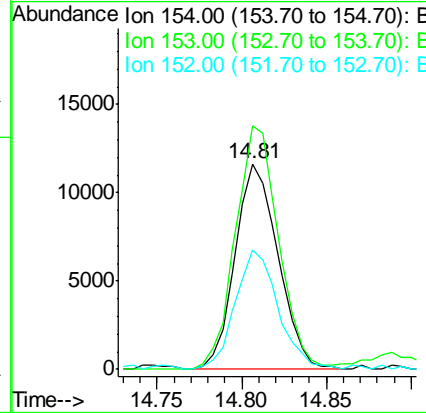
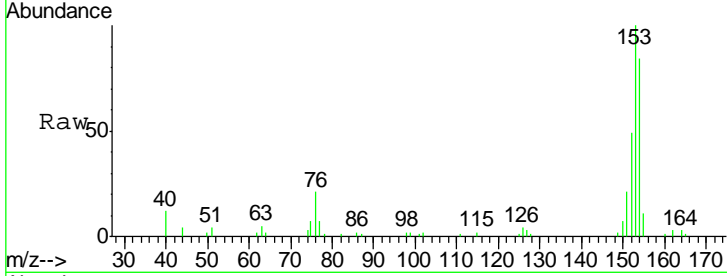




#51
 Acenaphthene
 Concen: 2.78 ng
 RT: 14.81 min Scan# 2037
 Delta R.T. -0.01 min
 Lab File: BG022260.D
 Acq: 9 Jun 2016 9:15

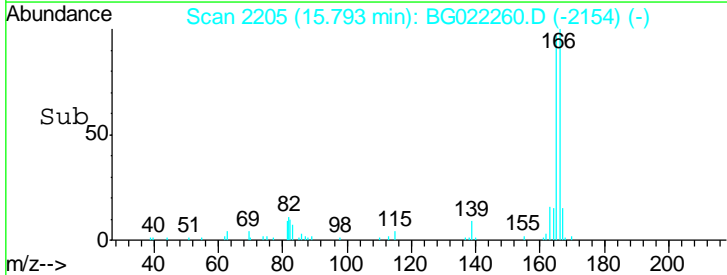
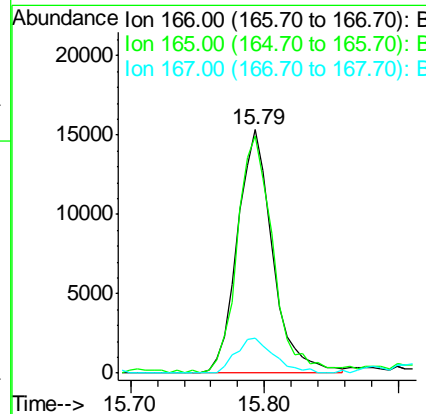
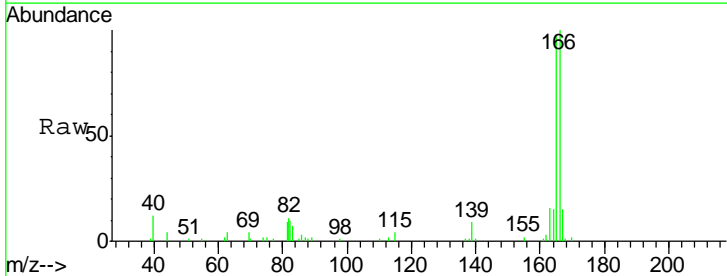
Instrument :
 BNA_G
 ClientSampled :
 SS-41

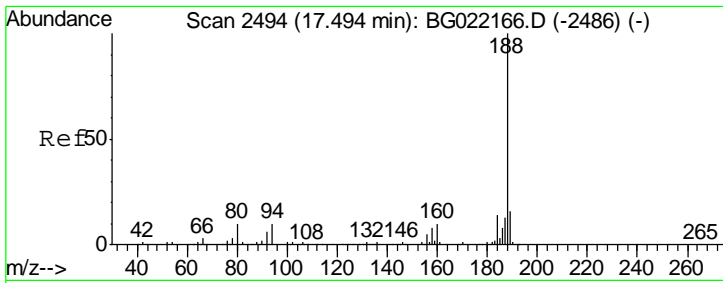
Tgt Ion	Resp	Lower	Upper
154	100		
153	118.6	91.9	137.9
152	57.9	42.0	63.0



#57
 Fluorene
 Concen: 2.82 ng
 RT: 15.79 min Scan# 2205
 Delta R.T. -0.00 min
 Lab File: BG022260.D
 Acq: 9 Jun 2016 9:15

Tgt Ion	Resp	Lower	Upper
166	100		
165	97.5	79.0	118.4
167	14.5	10.7	16.1

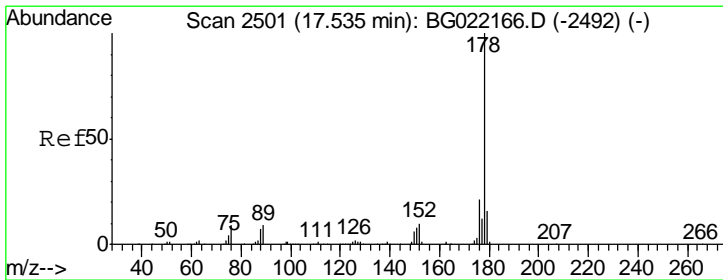
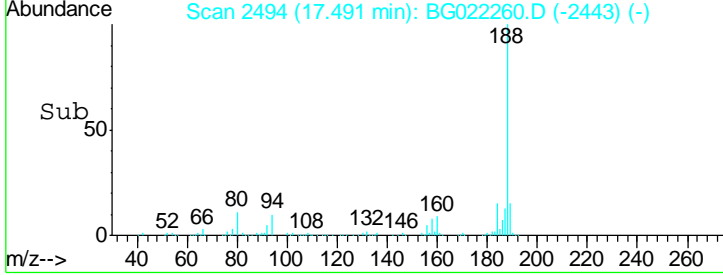
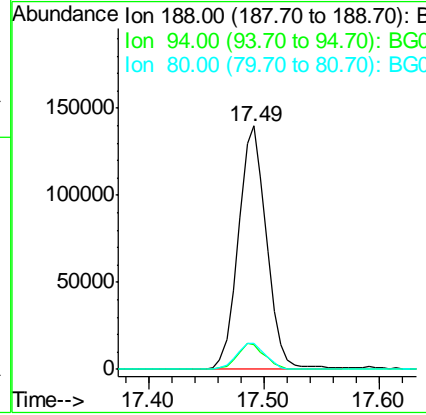
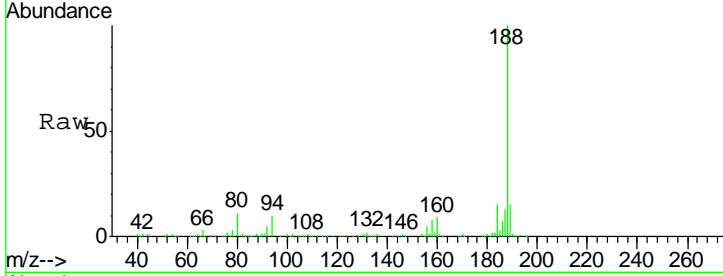




#63
 Phenanthrene-d10
 Concen: 20.00 ng
 RT: 17.49 min Scan# 2494
 Delta R.T. -0.00 min
 Lab File: BG022260.D
 Acq: 9 Jun 2016 9:15

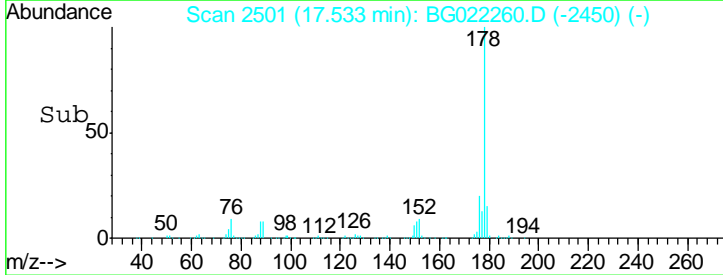
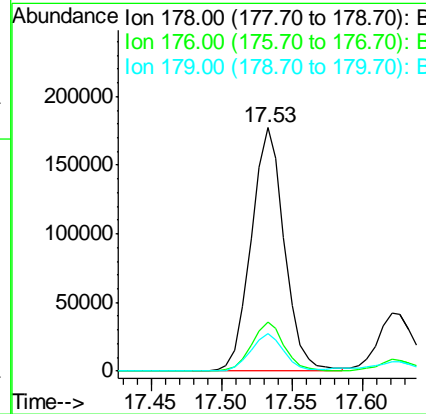
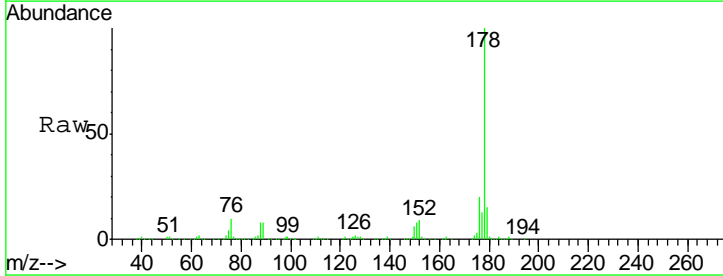
Instrument :
 BNA_G
 ClientSampled :
 SS-41

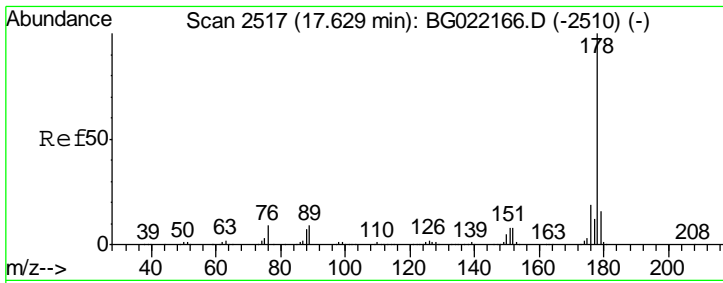
Tgt Ion	Resp	Lower	Upper
188	100		
94	10.1	7.5	11.3
80	10.9	8.6	13.0



#70
 Phenanthrene
 Concen: 22.85 ng
 RT: 17.53 min Scan# 2501
 Delta R.T. -0.00 min
 Lab File: BG022260.D
 Acq: 9 Jun 2016 9:15

Tgt Ion	Resp	Lower	Upper
178	100		
176	20.0	16.2	24.4
179	15.4	12.0	18.0

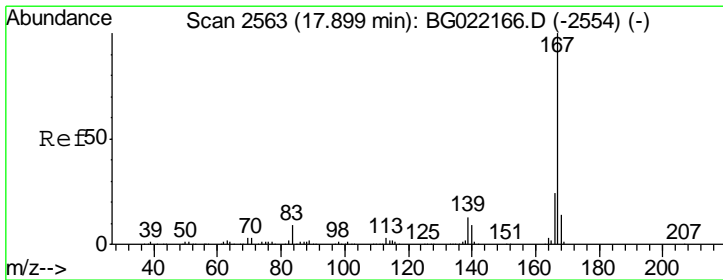
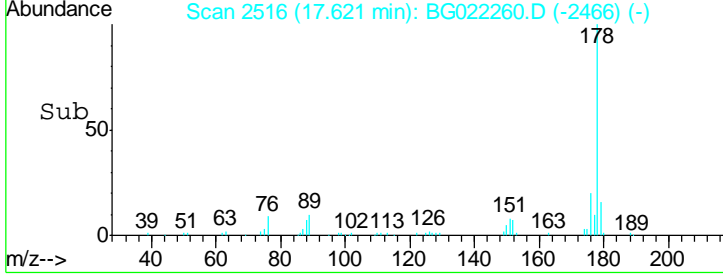
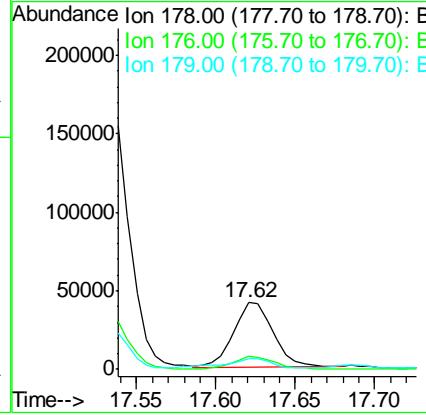
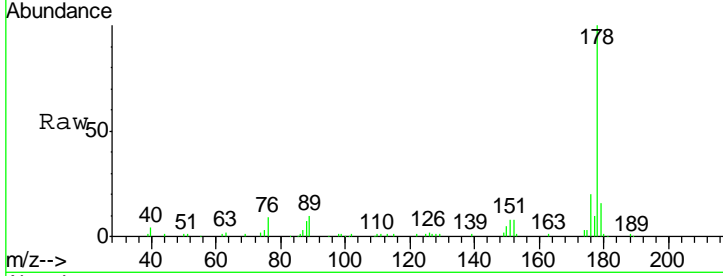




#71
 Anthracene
 Concen: 5.63 ng
 RT: 17.62 min Scan# 2516
 Delta R.T. -0.01 min
 Lab File: BG022260.D
 Acq: 9 Jun 2016 9:15

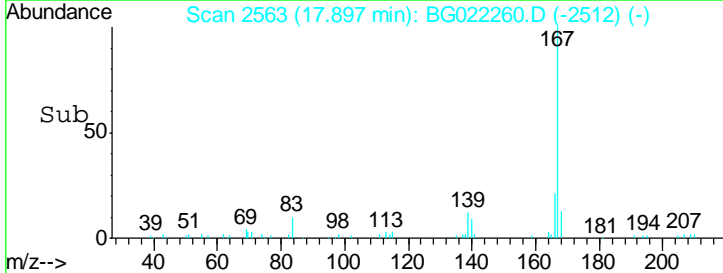
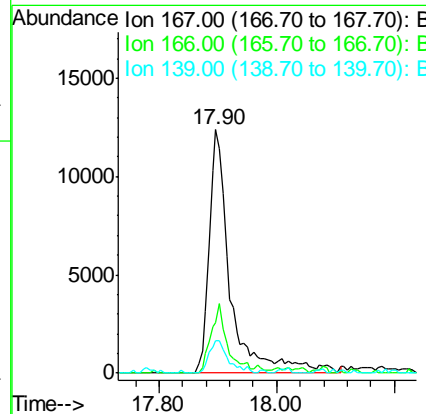
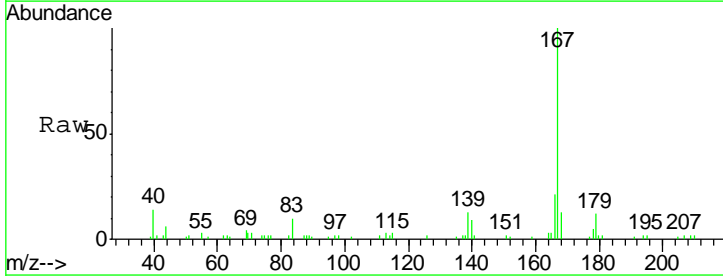
Instrument :
 BNA_G
 ClientSampled :
 SS-41

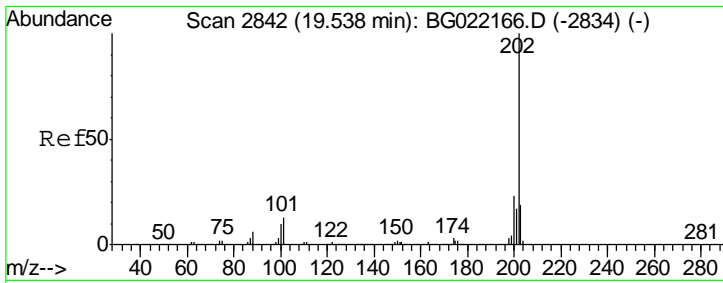
Tgt Ion	Resp	Lower	Upper
178	71590		
176	20.3	15.0	22.4
179	16.3	12.2	18.4



#72
 Carbazole
 Concen: 2.57 ng m
 RT: 17.90 min Scan# 2563
 Delta R.T. -0.00 min
 Lab File: BG022260.D
 Acq: 9 Jun 2016 9:15

Tgt Ion	Resp	Lower	Upper
167	30935		
166	20.9	18.6	27.8
139	13.4	10.6	15.8

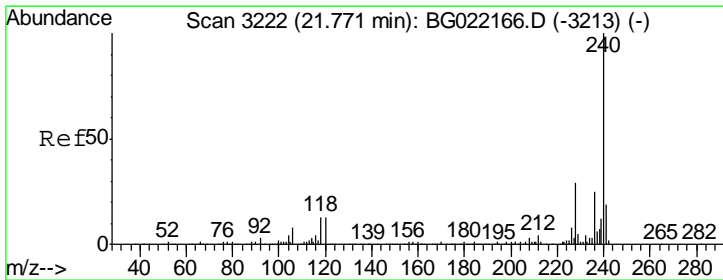
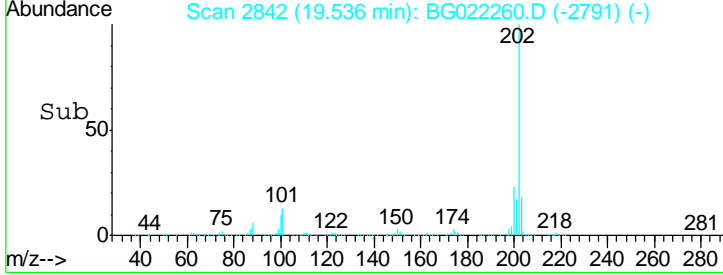
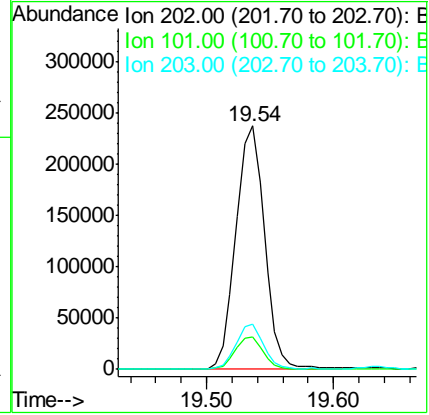
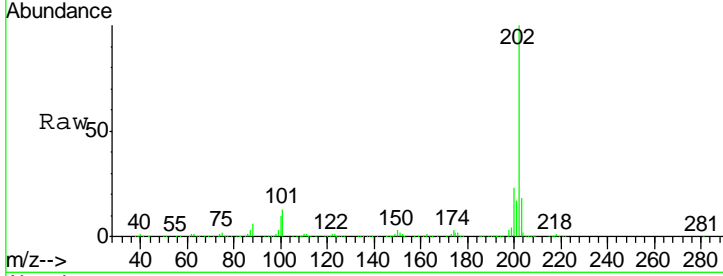




#74
 Fluoranthene
 Concen: 25.23 ng
 RT: 19.54 min Scan# 2842
 Delta R.T. -0.00 min
 Lab File: BG022260.D
 Acq: 9 Jun 2016 9:15

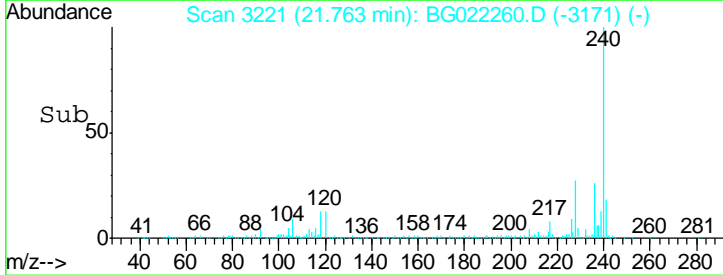
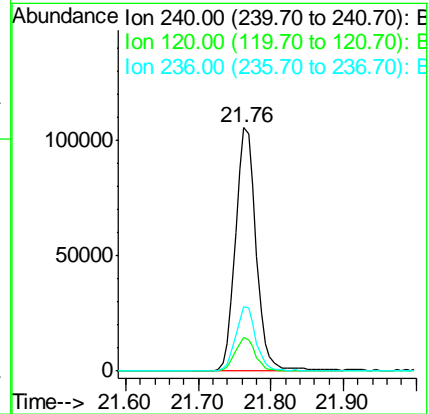
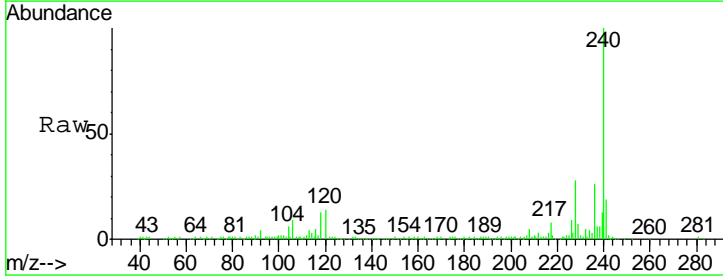
Instrument :
 BNA_G
 ClientSampled :
 SS-41

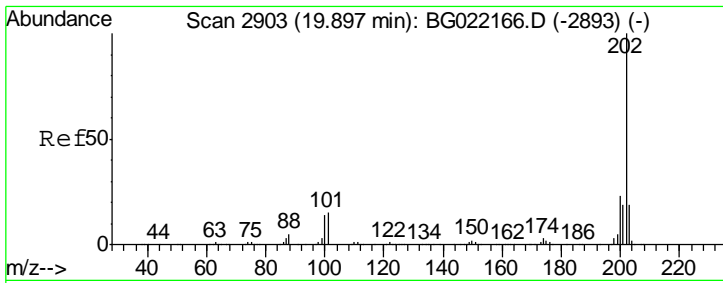
Tgt Ion	Resp	Lower	Upper
202	371767		
101	13.1	0.0	31.0
203	18.4	0.0	37.9



#75
 Chrysene-d12
 Concen: 20.00 ng
 RT: 21.76 min Scan# 3221
 Delta R.T. -0.01 min
 Lab File: BG022260.D
 Acq: 9 Jun 2016 9:15

Tgt Ion	Resp	Lower	Upper
240	210510		
120	13.6	8.4	12.6#
236	26.4	19.6	29.4

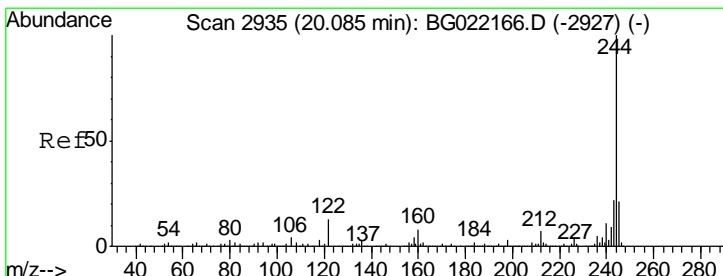
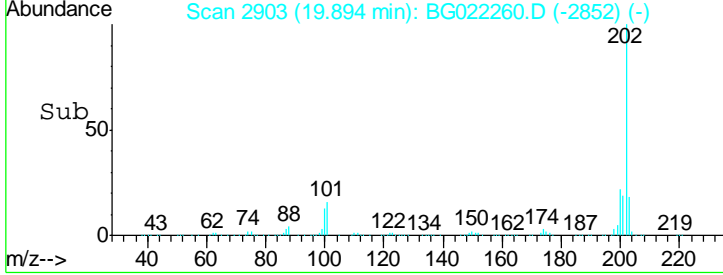
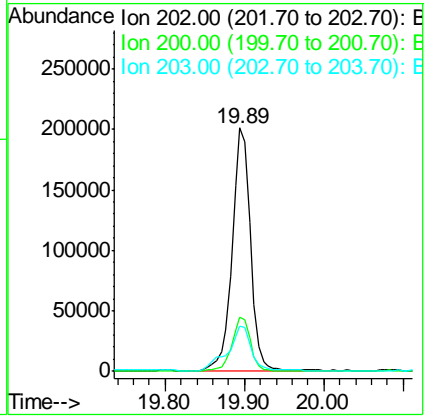
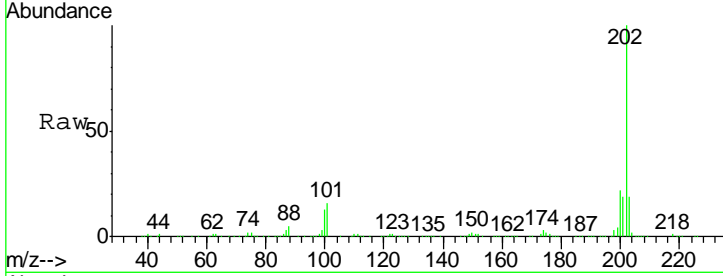




#77
 Pyrene
 Concen: 24.52 ng
 RT: 19.89 min Scan# 2903
 Delta R.T. -0.00 min
 Lab File: BG022260.D
 Acq: 9 Jun 2016 9:15

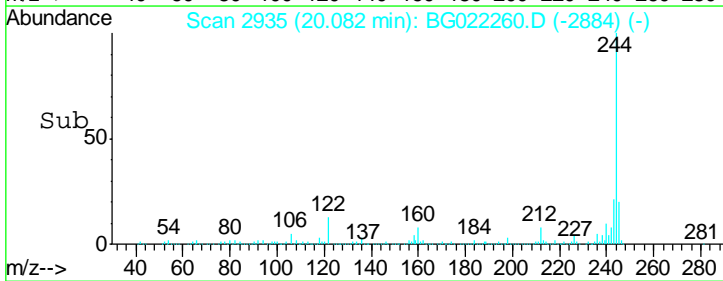
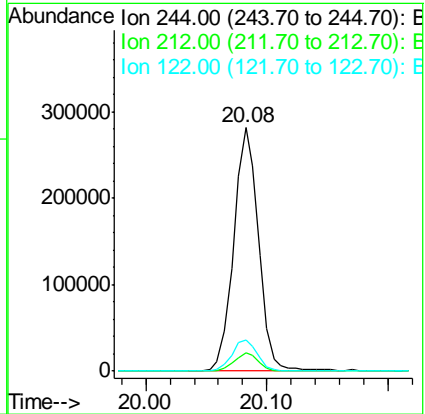
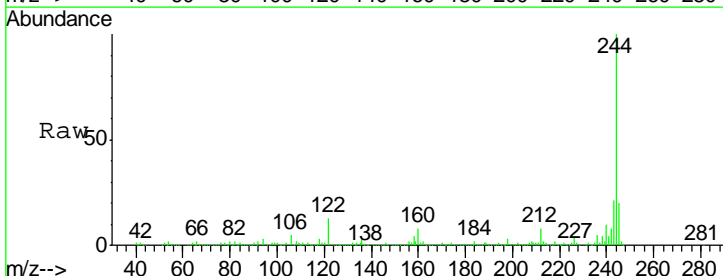
Instrument :
 BNA_G
 ClientSampled :
 SS-41

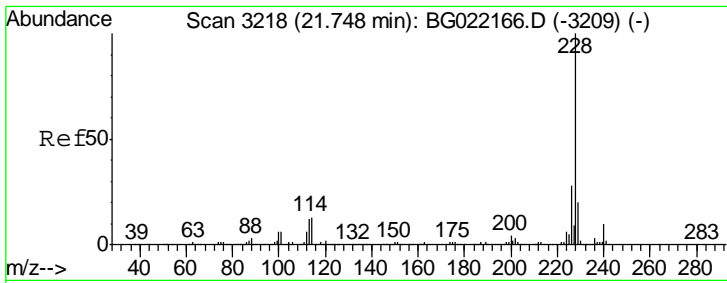
Tgt Ion	Resp	Lower	Upper
202	320840		
200	22.4	18.2	27.2
203	18.6	15.0	22.4



#78
 Terphenyl-d14
 Concen: 45.36 ng
 RT: 20.08 min Scan# 2935
 Delta R.T. -0.00 min
 Lab File: BG022260.D
 Acq: 9 Jun 2016 9:15

Tgt Ion	Resp	Lower	Upper
244	402178		
212	7.6	6.5	9.7
122	12.9	8.6	12.8#

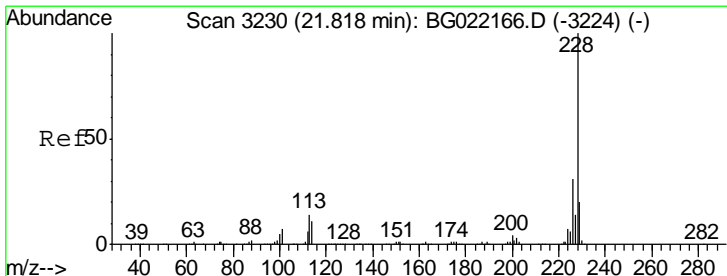
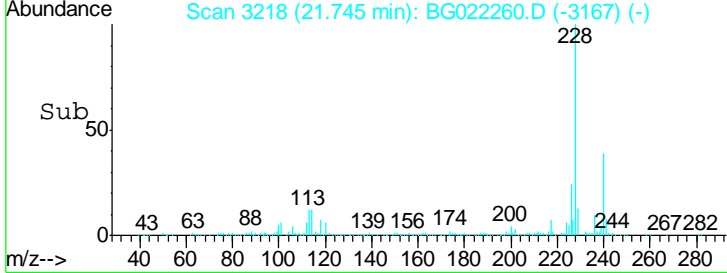
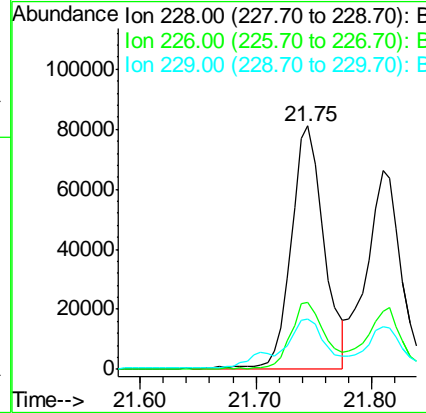
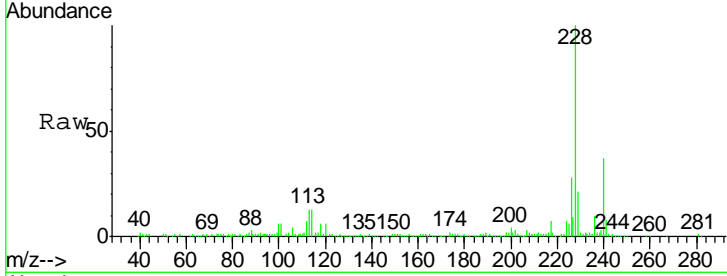




#80
 Benzo(a)anthracene
 Concen: 13.61 ng
 RT: 21.75 min Scan# 3218
 Delta R.T. -0.00 min
 Lab File: BG022260.D
 Acq: 9 Jun 2016 9:15

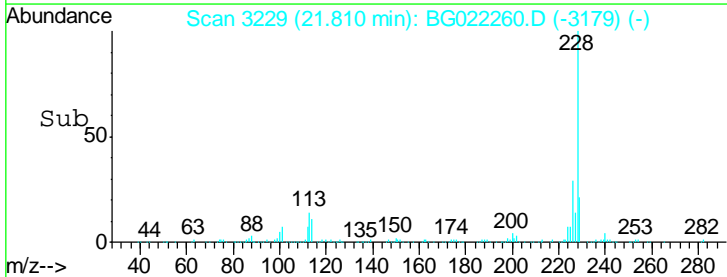
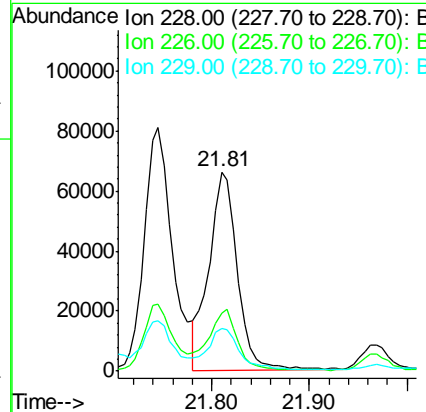
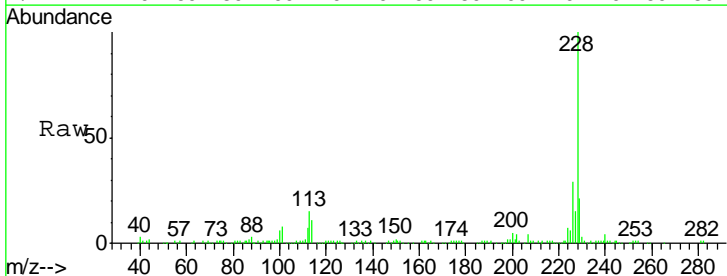
Instrument :
 BNA_G
 ClientSampled :
 SS-41

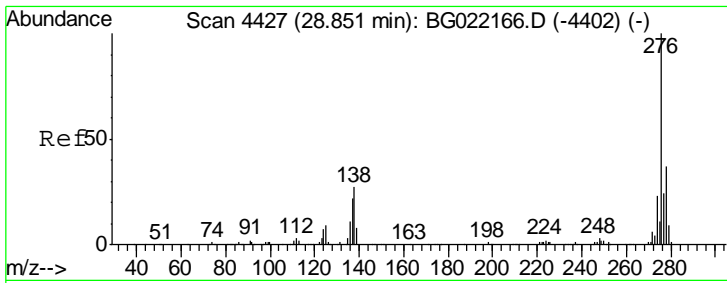
Tgt Ion	Resp	Lower	Upper
228	100		
226	27.6	22.6	34.0
229	20.8	16.1	24.1



#82
 Chrysene
 Concen: 11.69 ng
 RT: 21.81 min Scan# 3229
 Delta R.T. -0.01 min
 Lab File: BG022260.D
 Acq: 9 Jun 2016 9:15

Tgt Ion	Resp	Lower	Upper
228	100		
226	29.3	25.4	38.0
229	21.5	15.9	23.9

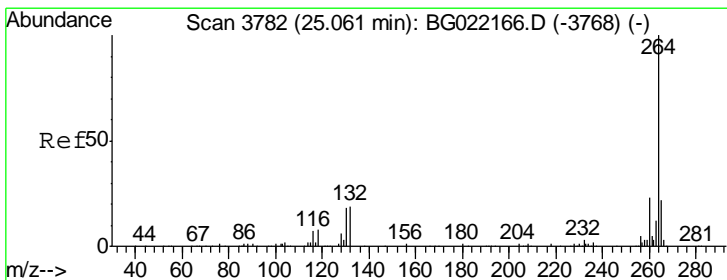
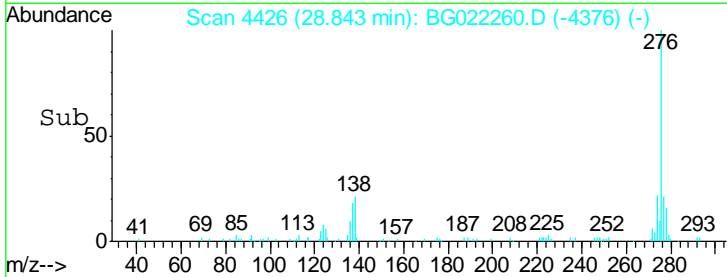
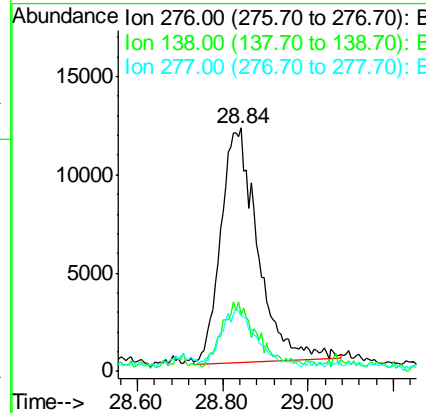
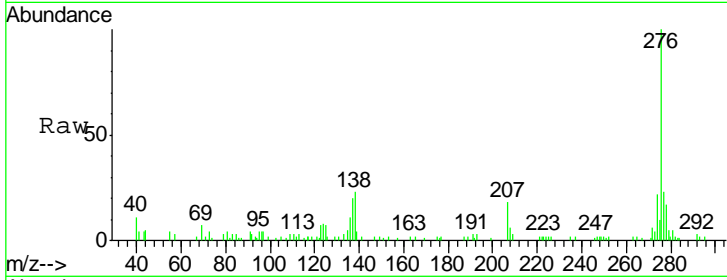




#85
 Indeno(1,2,3-cd)pyrene
 Concen: 5.56 ng m
 RT: 28.84 min Scan# 4426
 Delta R.T. -0.01 min
 Lab File: BG022260.D
 Acq: 9 Jun 2016 9:15

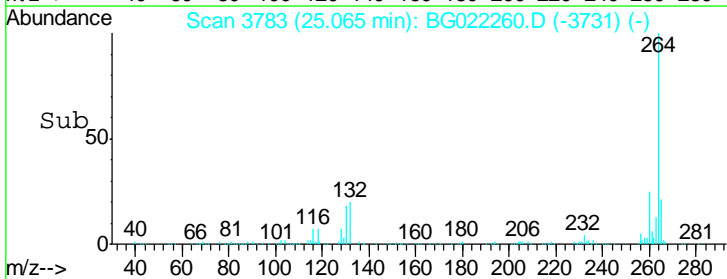
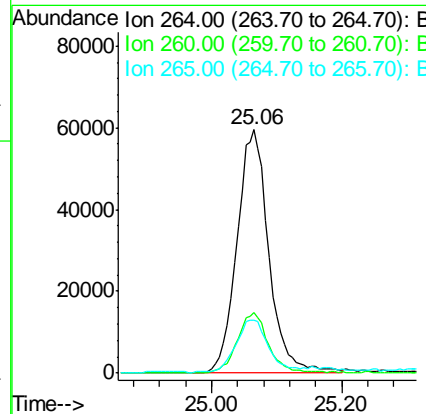
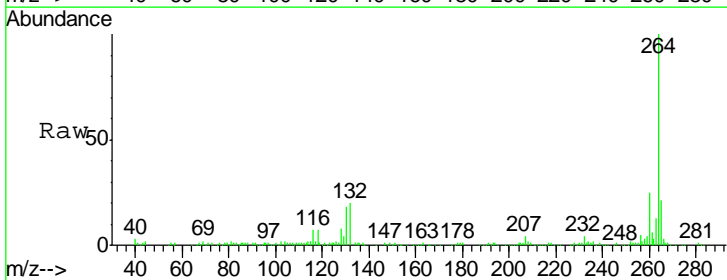
Instrument :
 BNA_G
 ClientSampled :
 SS-41

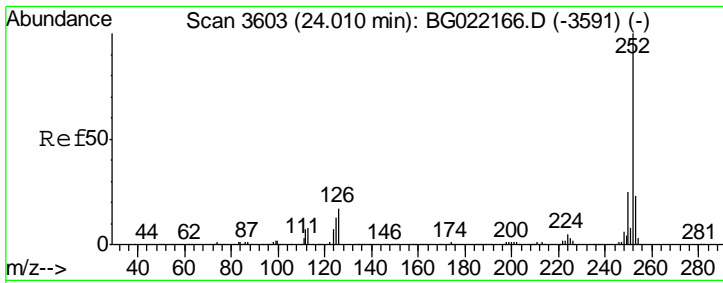
Tgt Ion	Resp	Lower	Upper
276	71694		
138	25.1	14.0	21.0#
277	19.2	20.6	30.8#



#86
 Perylene-d12
 Concen: 20.00 ng
 RT: 25.06 min Scan# 3783
 Delta R.T. 0.00 min
 Lab File: BG022260.D
 Acq: 9 Jun 2016 9:15

Tgt Ion	Resp	Lower	Upper
264	201552		
260	24.7	20.2	30.4
265	21.5	17.8	26.8

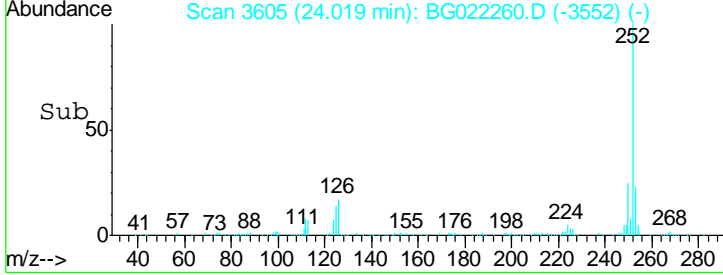
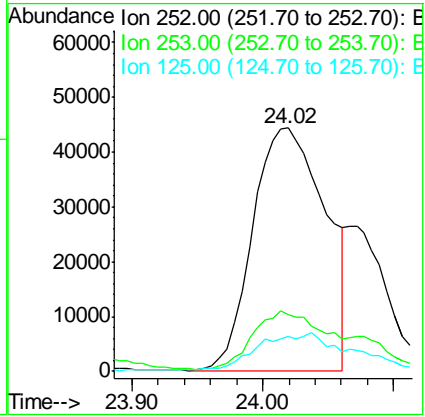
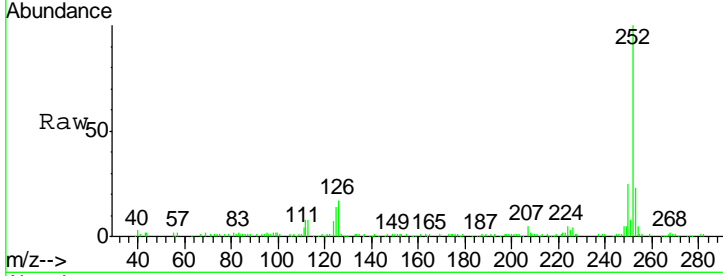




#87
 Benzo(b)fluoranthene
 Concen: 14.62 ng m
 RT: 24.02 min Scan# 3605
 Delta R.T. 0.01 min
 Lab File: BG022260.D
 Acq: 9 Jun 2016 9:15

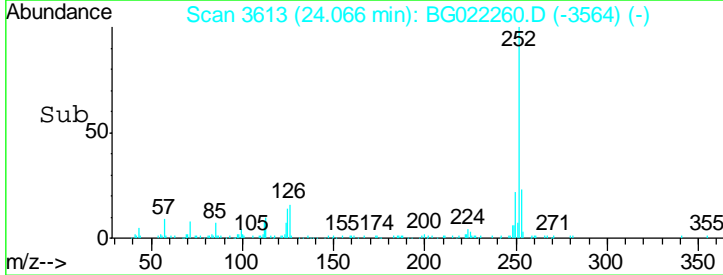
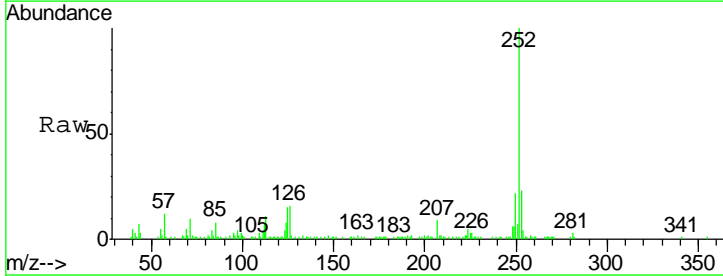
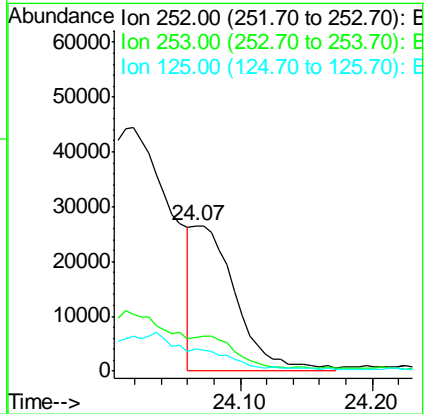
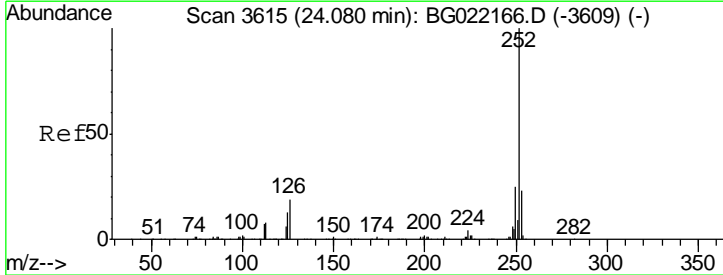
Instrument :
 BNA_G
 ClientSampled :
 SS-41

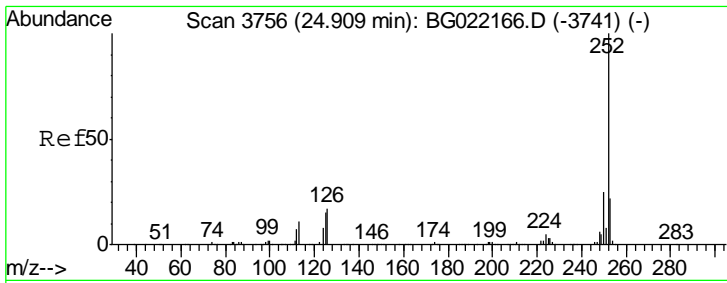
Tgt Ion	Resp	Lower	Upper
252	171906		
253	23.3	17.5	26.3
125	14.5	8.6	13.0#



#88
 Benzo(k)fluoranthene
 Concen: 5.18 ng m
 RT: 24.07 min Scan# 3613
 Delta R.T. -0.01 min
 Lab File: BG022260.D
 Acq: 9 Jun 2016 9:15

Tgt Ion	Resp	Lower	Upper
252	59918		
253	23.4	17.8	26.8
125	15.5	8.3	12.5#

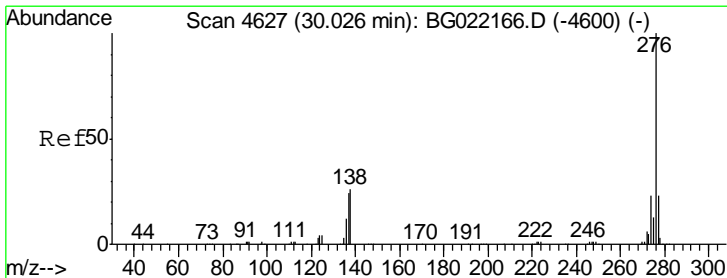
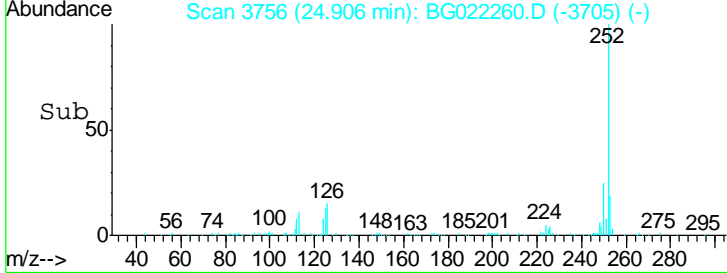
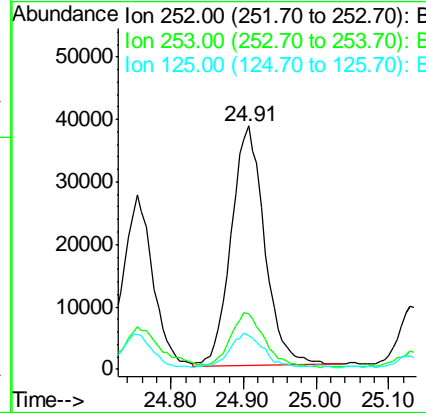
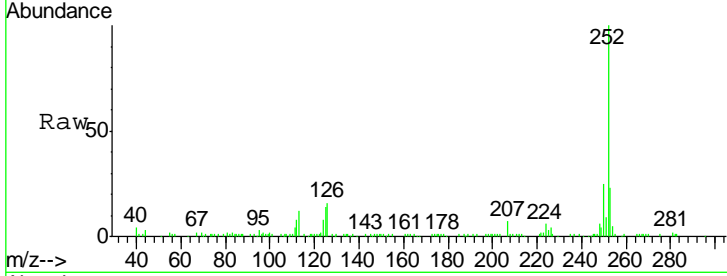




#89
 Benzo(a)pyrene
 Concen: 10.91 ng
 RT: 24.91 min Scan# 3756
 Delta R.T. -0.00 min
 Lab File: BG022260.D
 Acq: 9 Jun 2016 9:15

Instrument :
 BNA_G
 ClientSampled :
 SS-41

Tgt Ion	Resp	Lower	Upper
252	122663		
253	22.5	17.1	25.7
125	13.9	9.6	14.4



#91
 Benzo(g,h,i)perylene
 Concen: 6.89 ng m
 RT: 30.03 min Scan# 4628
 Delta R.T. 0.00 min
 Lab File: BG022260.D
 Acq: 9 Jun 2016 9:15

Tgt Ion	Resp	Lower	Upper
276	75832		
277	18.5	19.4	29.2#
138	30.3	17.4	26.0#

